



STAVELY
MINERALS

and Queensland's

Unlocking Victoria's Copper-Gold Potential

RIU Explorer's Conference
25 February 2016

This presentation contains only an overview of Stavely Minerals Limited (“Stavely” or the “Company”) and its activities and operations. The contents of this presentation, including matters relating to the geology and exploration potential of the Company’s projects, may rely on various assumptions and subjective interpretations which it is not possible to detail in this presentation and which have not been subject to any independent verification.

This presentation contains a number of forward-looking statements. Known and unknown risks and uncertainties, and factors outside of the Company’s control, may cause the actual results, performance and achievements of the Company to differ materially from those expressed or implied in this presentation.

To the maximum extent permitted by law, Stavely does not warrant the accuracy, currency or completeness of the information in this presentation, nor the future performance of the Company, and will not be responsible for any loss or damage arising from the use of the information.

The information contained in this presentation is not a substitute for detailed investigation or analysis of any particular issue. Current and potential investors should seek independent advice before making any investment decision in regard to the Company or its activities.

ASX Code – SVY

Share Price - \$0.135

Cash (31/12/15) - \$2.16M*

**Excludes Titeline Drilling agreement,*

Shares on Issue – 93.8M

Market Cap - \$12.7M

Directors

Bill Plyley

Non-executive Chairman

Chris Cairns

Managing Director

Jennifer Murphy

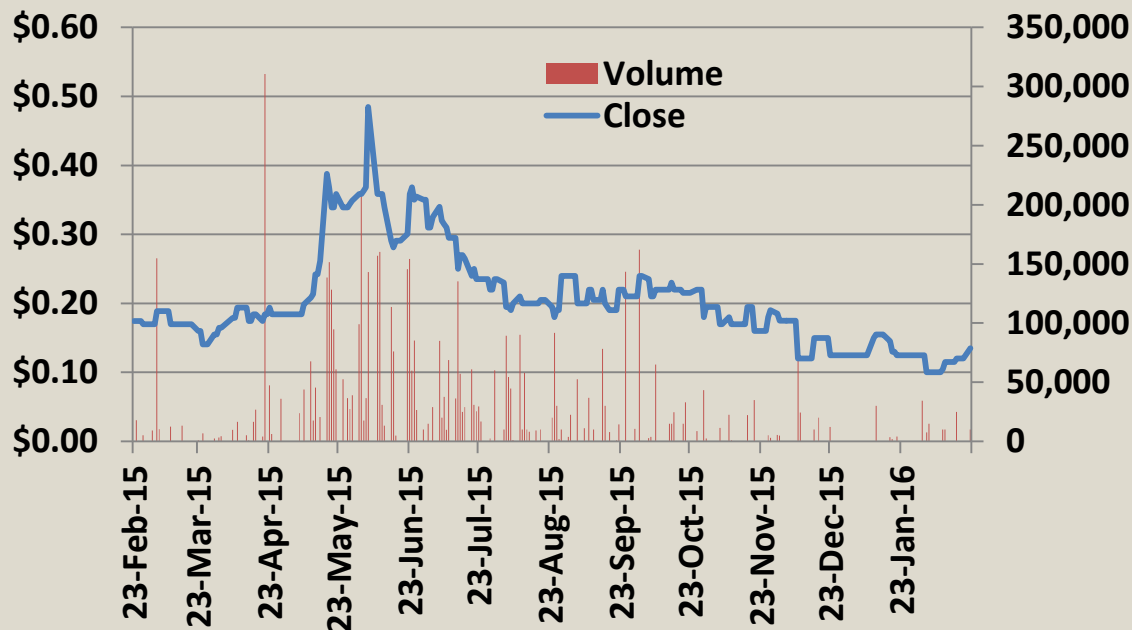
Technical Director

Peter Ironside

Non-executive Director

Amanda Sparks

Company Secretary



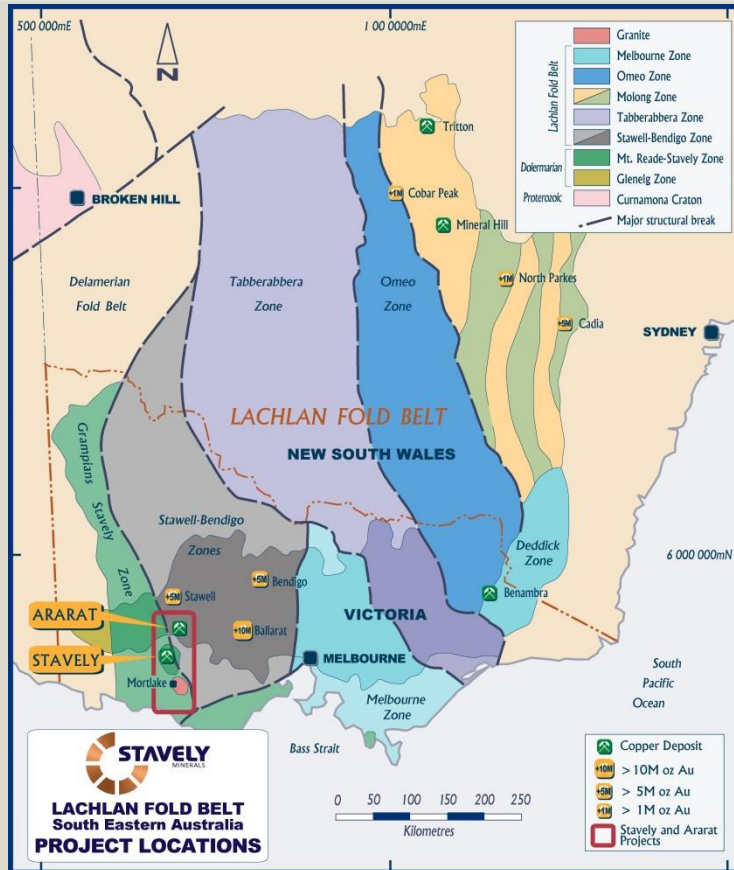
**\$2m share subscription agreement with Titeline Drilling Pty Ltd announced to the ASX on 7 October 2014*

The background features a dark blue field with a large, faint, circular graphic composed of concentric arcs and radial lines, resembling a stylized sun or a target. In the upper right, the company logo is displayed. The word "STAVELY" is in a large, bold, white sans-serif font, with "MINERALS" in a smaller, white sans-serif font directly below it. A vertical bar on the left side of the image is split: the top half is a solid copper color with a brushed metal texture, and the bottom half is a light beige color with thin, horizontal white lines.

STAVELY
MINERALS

PROJECTS

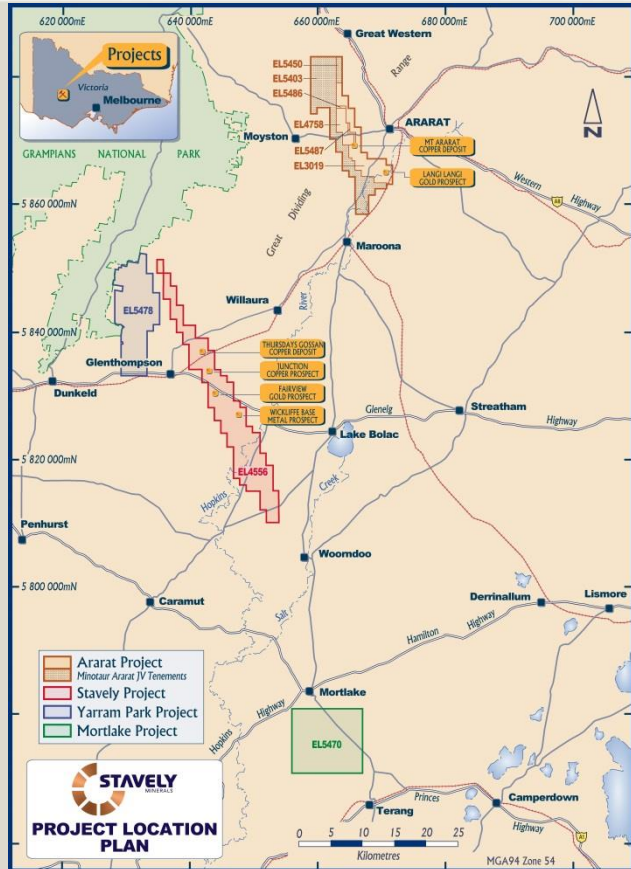
VICTORIAN PROJECT LOCATIONS



The Ararat Project is in the Moornambool Metamorphic Complex and is prospective for VMS base metals-gold and 'Stawell-style' gold mineralisation.

The Mount Stavely Volcanic Complex is prospective for ancient porphyry copper-gold, VMS base metals-gold and intrusive related gold mineralisation.

VICTORIAN PROJECT LOCATIONS



415 square kilometres of
Stavely Minerals tenure

72 square kilometres of JV
tenure

MINERAL RESOURCES¹

At the Ararat Project, hosted in a Besshi-style VMS:

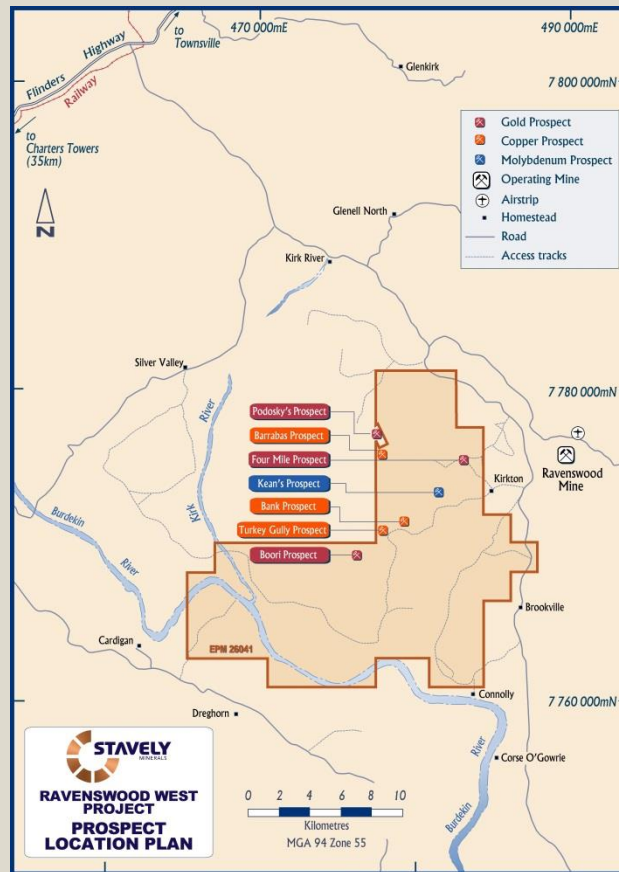
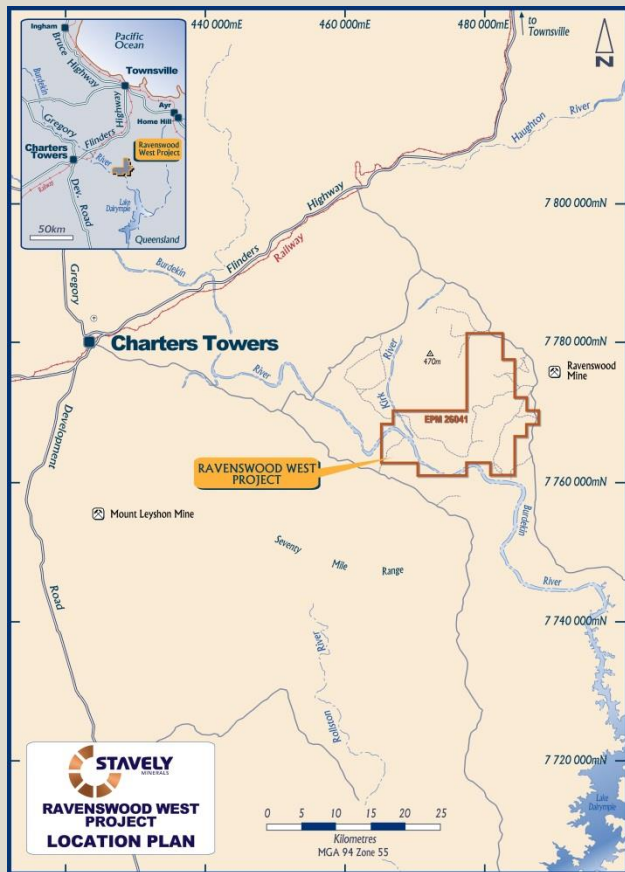
- Inferred Mineral Resources of 1.3Mt at 2.0% copper, 0.5 g/t gold, 0.4% zinc and 6 g/t silver for 30kt of contained copper

At the Stavely Project hosted in a secondary chalcocite-enriched blanket:

- Inferred Mineral Resources of 28Mt at 0.4% copper for 110kt of contained copper

¹ reported in compliance with JORC 2012, see ASX announcement 8 September 2015 and available from www.stavely.com.au

QUEENSLAND PROJECT LOCATION



241 square
kilometre
Exploration
Licence
Application

4 porphyry
prospects

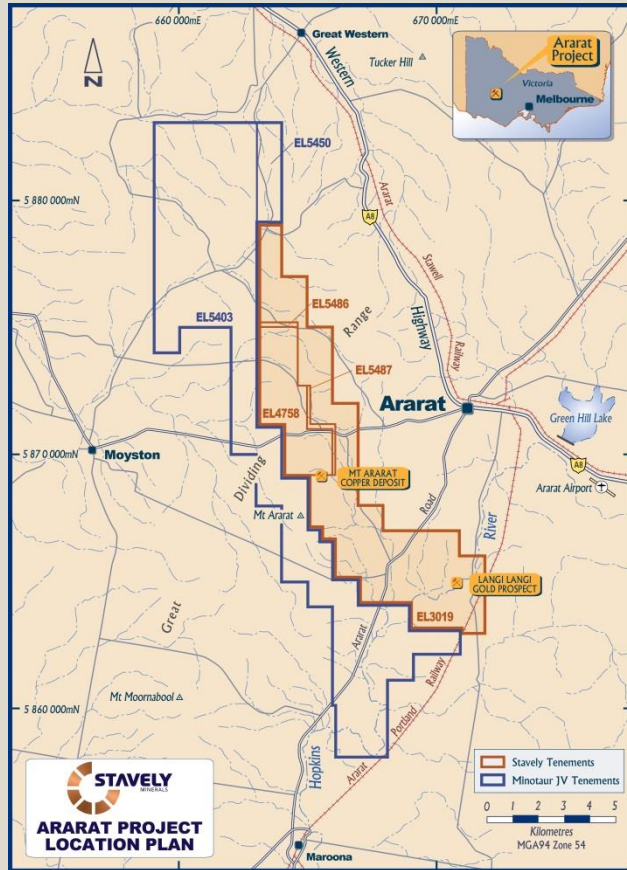
3 gold
prospects

The background features a dark blue field with a large, faint, circular graphic resembling a stylized sun or a mineral structure. This graphic has a central dark blue circle, surrounded by concentric rings of copper-colored segments. The segments are separated by dark blue lines, creating a radial pattern. In the top left corner, there is a vertical bar with a copper-colored upper half and a white lower half.

STAVELY
MINERALS

ARARAT PROJECT

ARARAT PROJECT

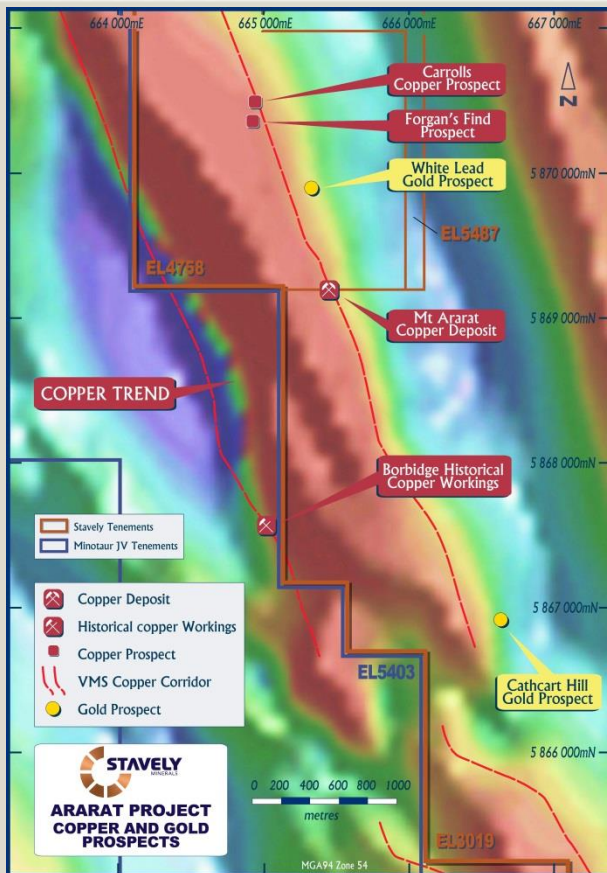


Hosts the:

Mt Ararat Besshi-style
copper-gold VMS

and 'Stawell-style' gold
targets

ARARAT PROJECT



- ✓ Prospective VMS copper gold horizon extends over 15 kilometres within Stavely Minerals tenements, 23 kilometres including JV tenements.
- ✓ Recent reconnaissance exploration has confirmed the horizon is up to 1km wide
- ✓ 'Stawell-style' gold / arsenic anomalies along 4-5km of strike and open to north and south

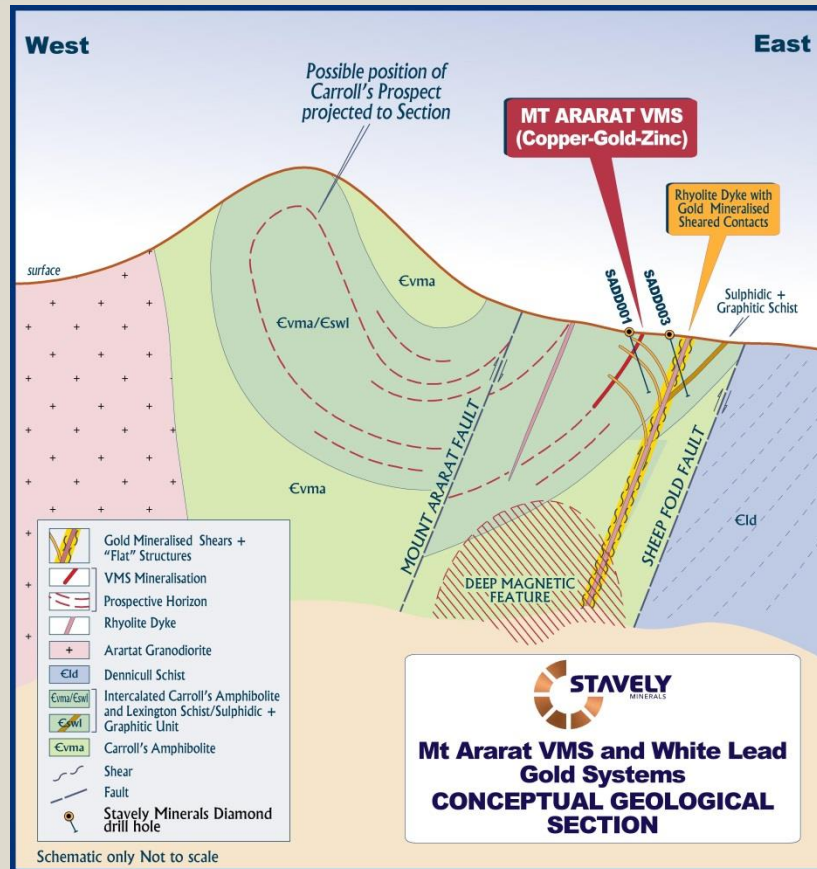
ARARAT PROJECT

STAVELY
MINERALS

Conceptual Model

- Multiple VMS target horizons – circa 530Ma age
- Steep west dipping gold feeder structures and shallow east-dipping horse-tail splays – circa 425Ma age

¹ see ASX announcement dated 6 July 2015
and available from www.stavely.com.au



The background features a dark blue field with a faint, large-scale radial pattern of concentric arcs and radial lines. In the upper right, the company logo is displayed. The word "STAVELY" is in a large, bold, white sans-serif font, with "MINERALS" in a smaller, white sans-serif font directly below it. To the left of the text is a circular graphic element consisting of a dark blue center, an orange ring, and a larger dark blue outer ring, all set against the radial background pattern.

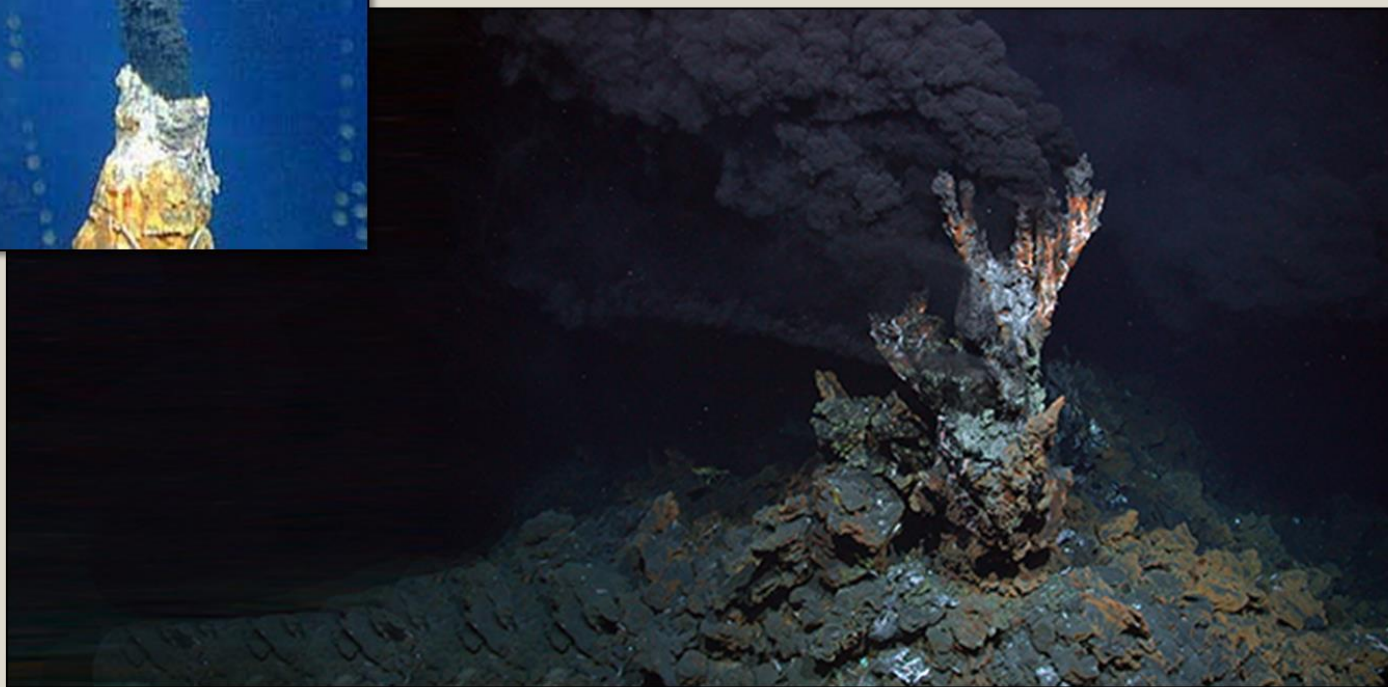
STAVELY
MINERALS

MOUNT ARARAT VMS

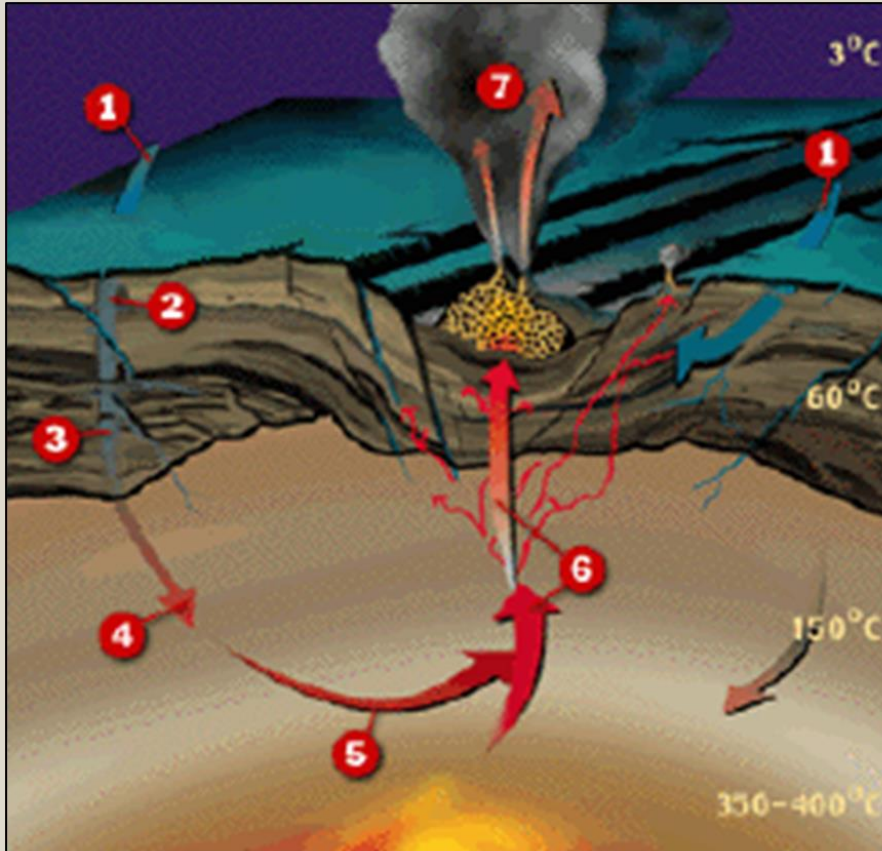
ARARAT PROJECT



Mt Ararat Besshi-style copper-gold VMS is an ancient sea-floor 'black smoker'



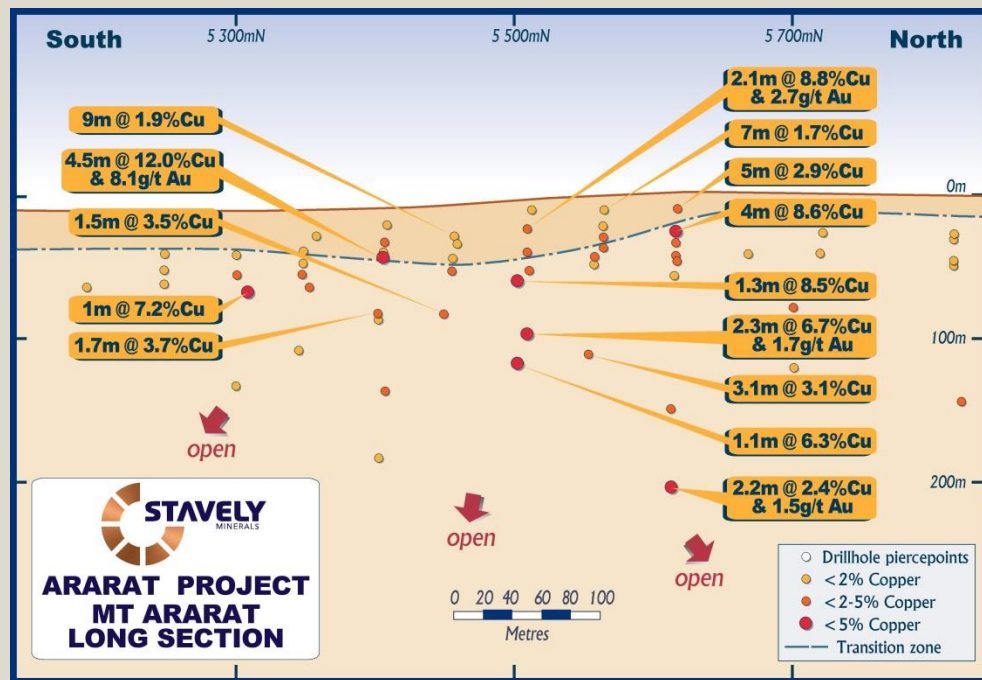
ARARAT PROJECT



Mt Ararat Besshi-style copper-gold VMS is an ancient sea-floor 'black smoker' – they tend to occur in clusters of typically 6-8 deposits

ARARAT PROJECT

- Mt Ararat Besshi-style VMS – Inferred Mineral Resource of 1.3Mt at 2.0% copper, 0.5 g/t gold, 0.4% zinc and 6 g/t silver
- The Degruusa deposit is considered a Besshi-style VMS
- Open at depth and along strike



ARARAT PROJECT



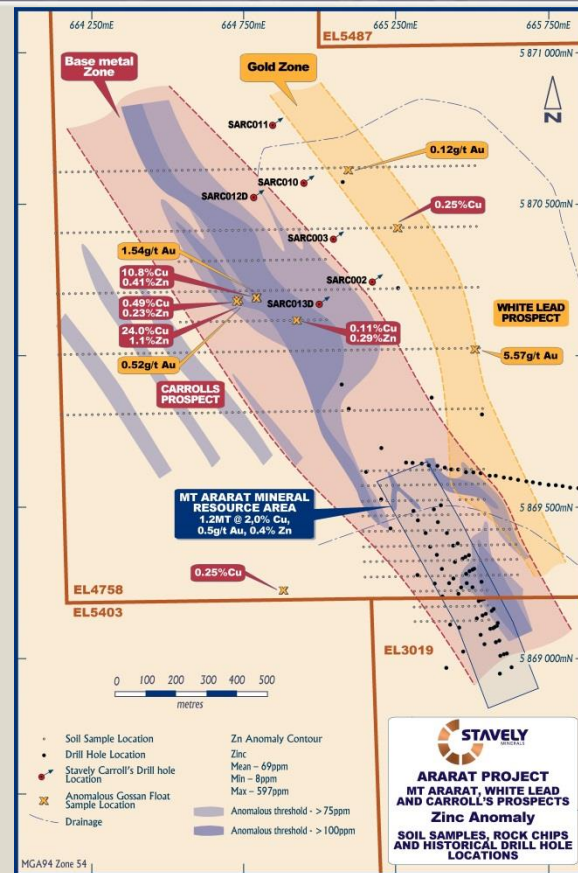
Carroll's and Forgan's Find Prospect Geochemistry

Multiple mineralised horizons confirmed with Carroll's Copper prospect re-discovered with rock-chip results including:

- 10.8% copper, 0.41% Zn and 1.5 g/t gold
- 24% copper, 1.1% zinc and 0.52 g/t gold



¹ see ASX announcement dated 8 May 2015 and available from www.stavely.com.au



ARARAT PROJECT

STAVELY
MINERALS

Carroll's and Forgan's Find diamond drilling

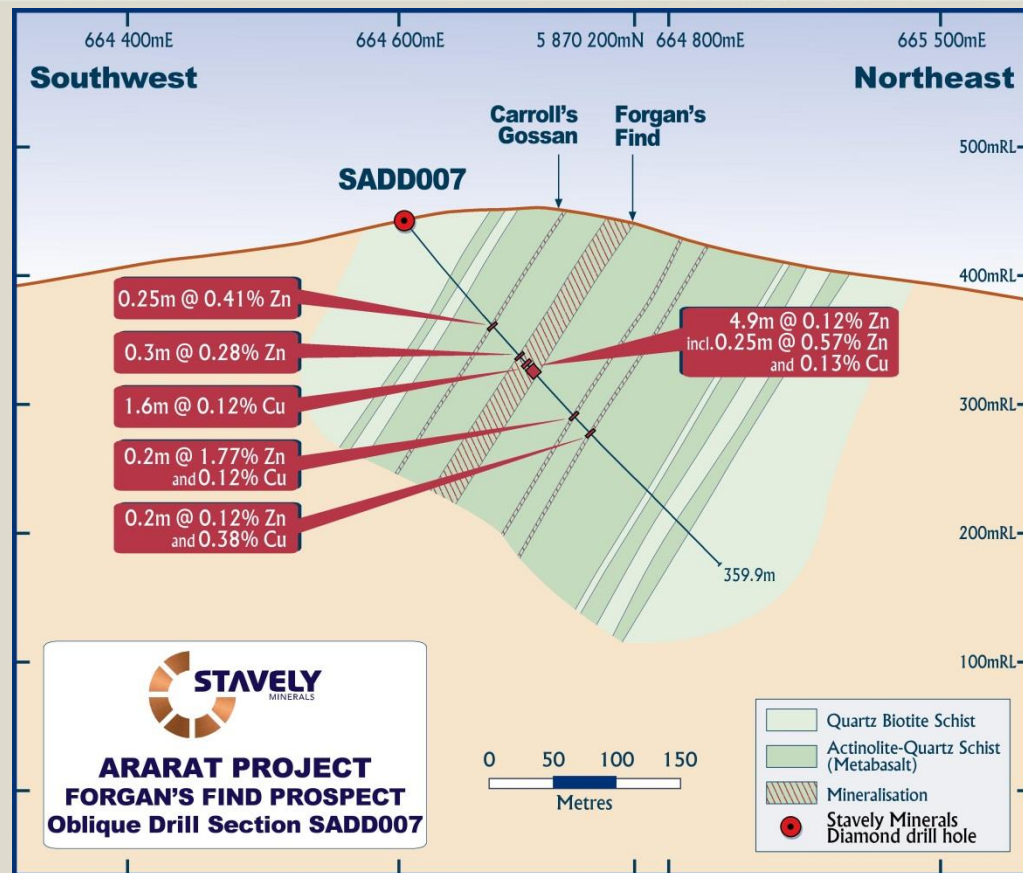
Initial drill results including:

- 0.2m at 1.77% Zn
- 0.25m at 0.57% Zn and 0.13% Cu

Narrow, zinc rich mineralisation considered distal.

Will deploy down-hole EM to identify thicker copper-gold core.

see ASX announcement dated 24 February 2016 and available from www.stavely.com.au



ARARAT PROJECT

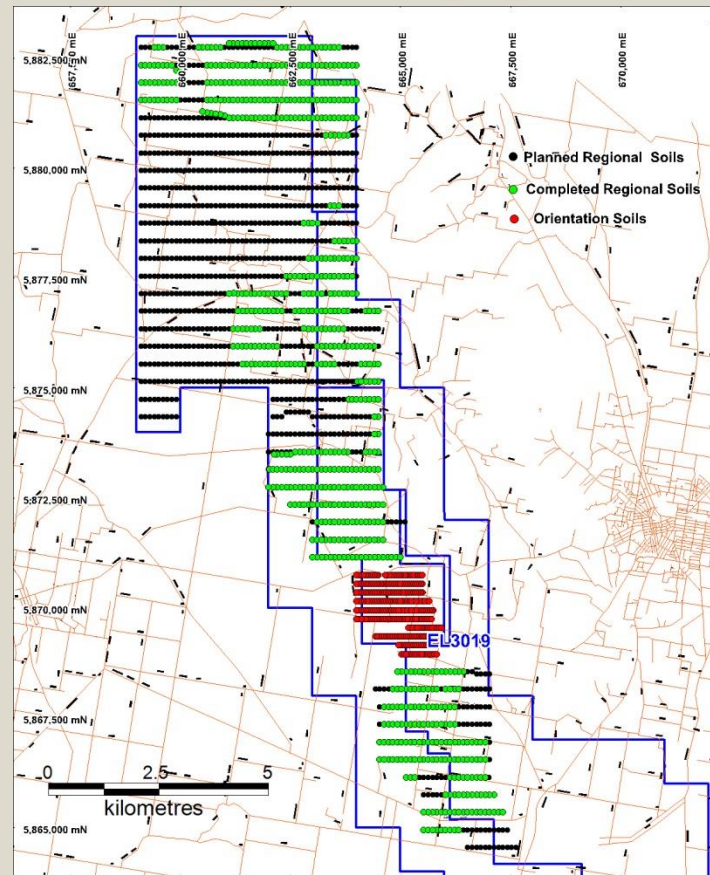


Regional soil sampling VMS copper-gold and gold

Results from Forgan's Find confirm the potential for multiple occurrences of VMS base metal \pm gold mineralisation within a 23km corridor.

Also, Stawell and Wonga-style gold mineralisation potential.

Regional soil sampling on 13km strike extent approximately 60% complete.

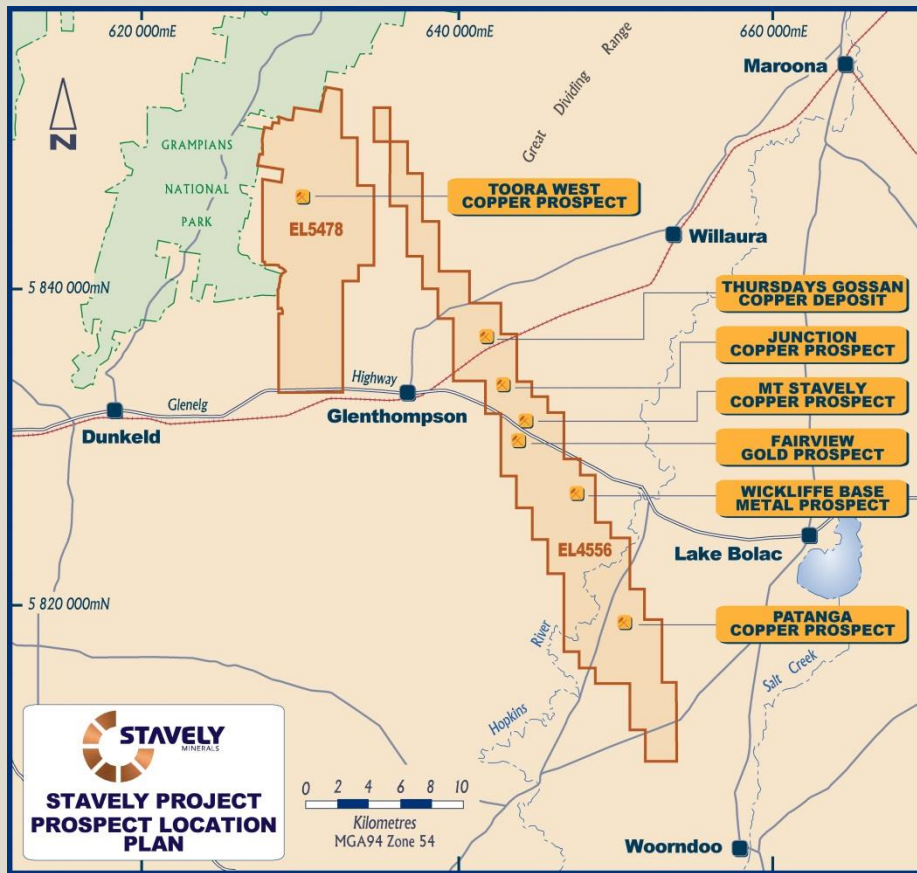


The background features a dark blue field with a faint, large-scale radial grid pattern. A vertical bar on the left side is split into a copper-colored top half and a light beige bottom half. The Stavelly Minerals logo is positioned in the upper right, featuring a central copper-colored circle with four radial segments. The word "STAVELY" is in large, bold, white capital letters, with "MINERALS" in smaller white capital letters below it.

STAVELY
MINERALS

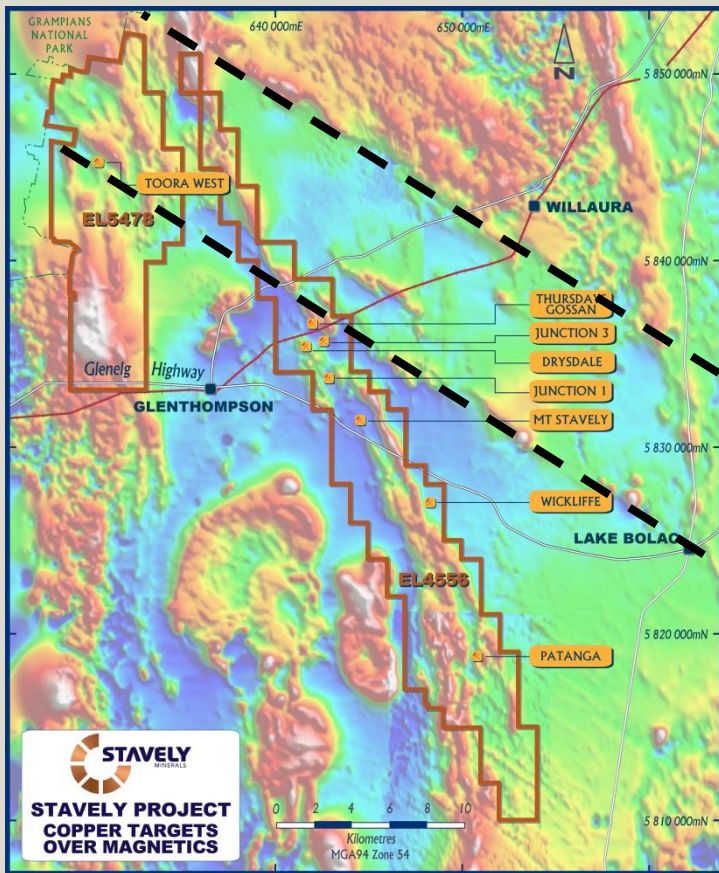
STAVELY PROJECT

STAVELY PROJECT



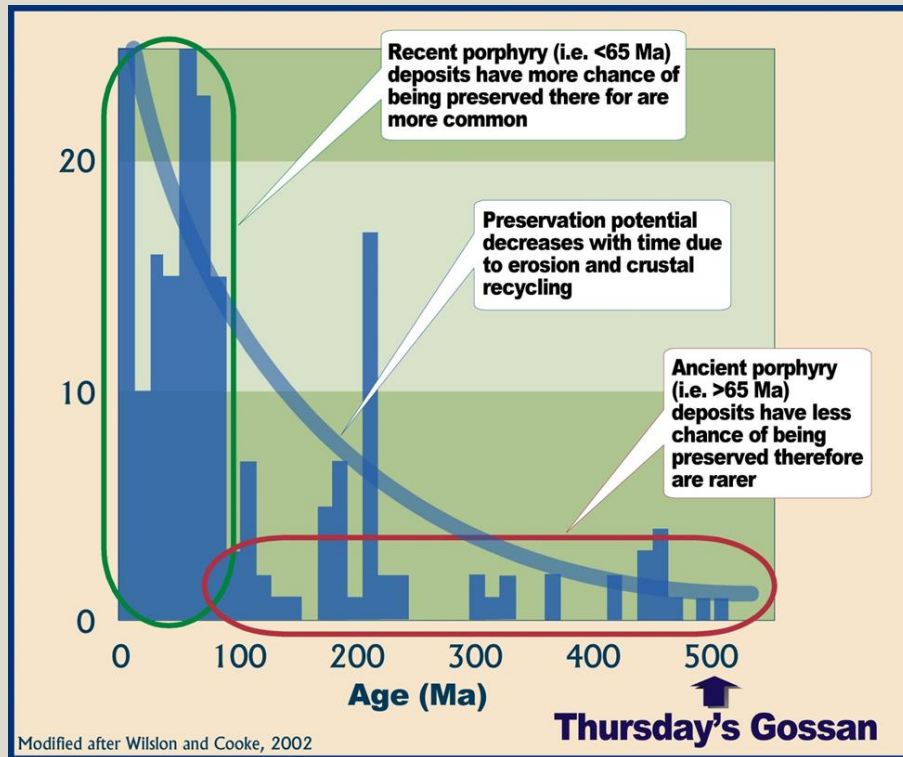
- Thursday's Gossan chalcocite enriched blanket – Inferred Mineral Resource of 28Mt at 0.4% copper containing 107kt copper
- Thursday's Gossan porphyry
- Junction porphyry
- Fairview Gold prospect
- Wickliffe VMS prospect
- Patanga porphyry prospect

STAVELY PROJECT



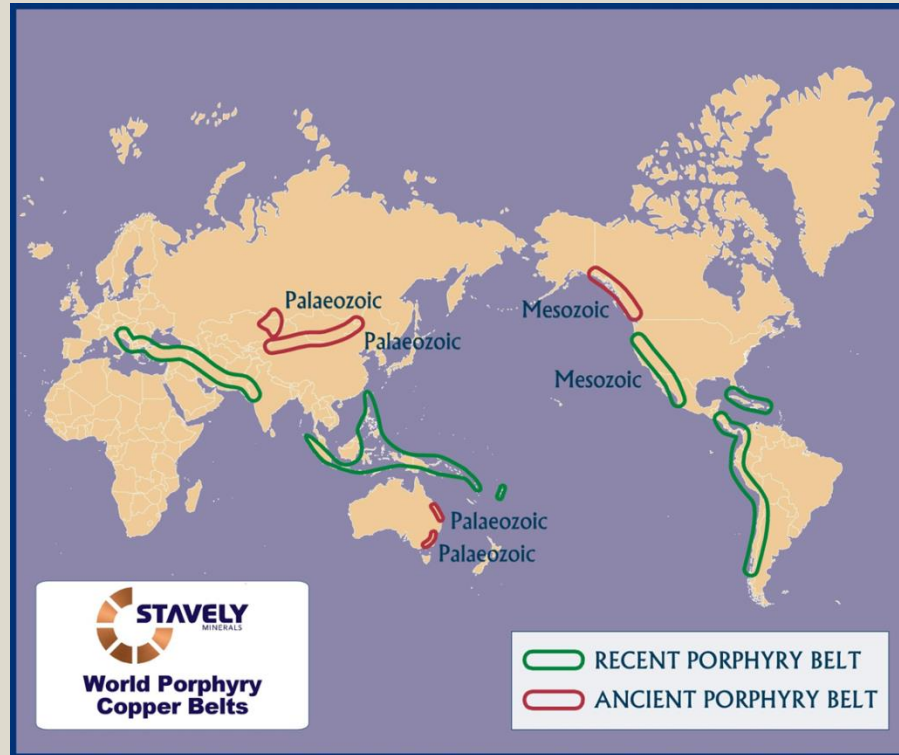
- Similar structural setting to Cadia Valley
 - ~N-S trending volcanic belt
 - Major NW trending structures

Why look for porphyries in western Victoria?

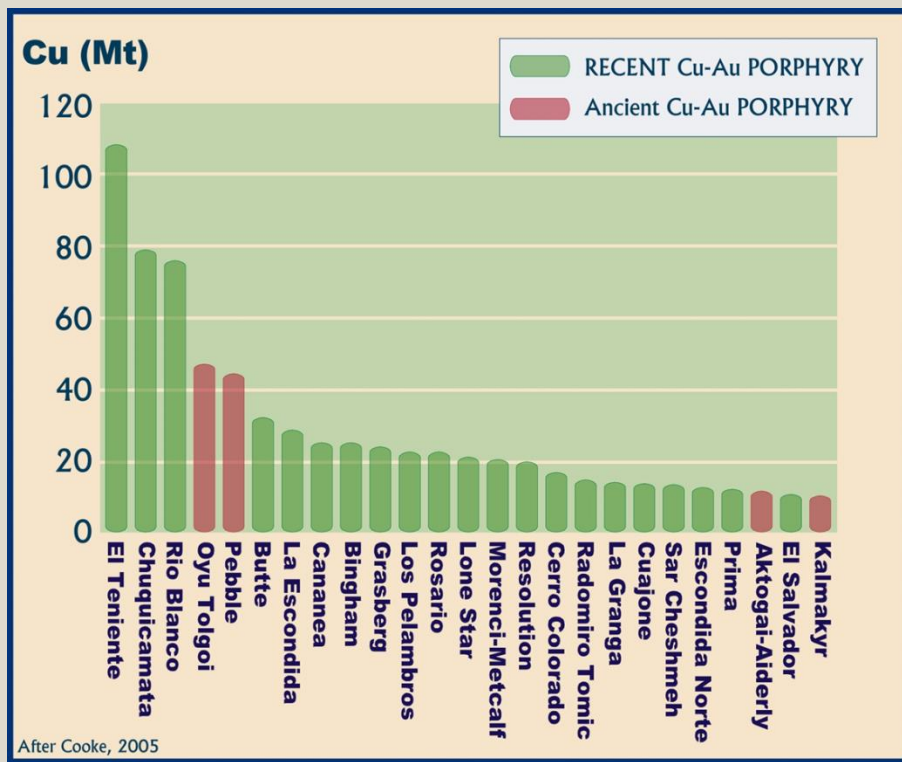


- Porphyry deposit examples from as early as Archaean age
- Likelihood of porphyry deposit preservation decreases with age due to erosion and crustal recycling

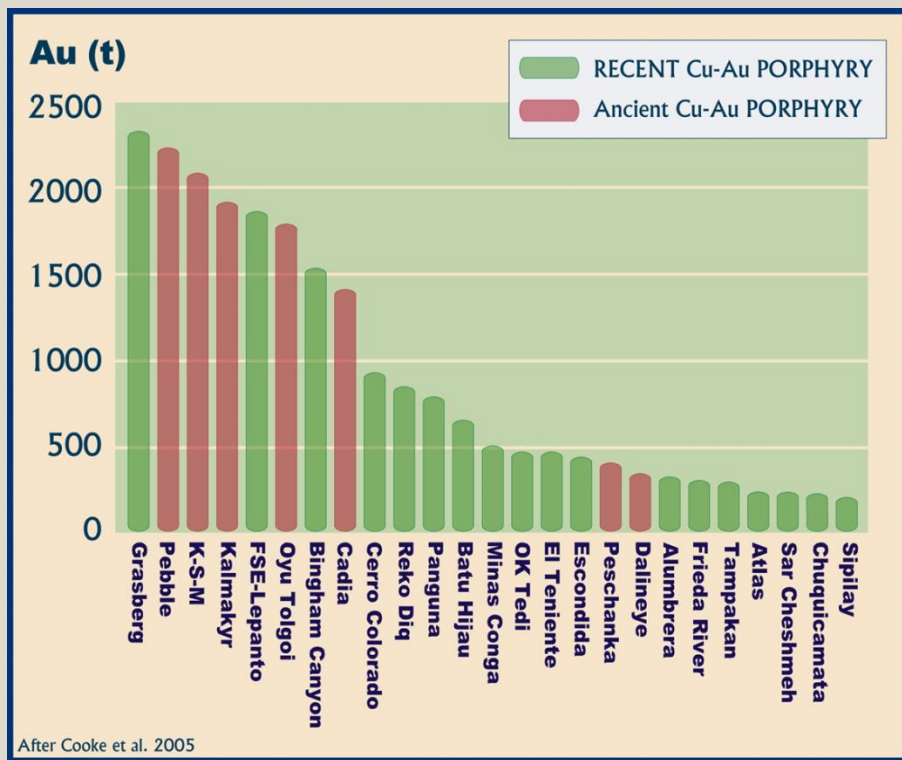
Why look for porphyries in western Victoria?



Why look for porphyries in western Victoria?



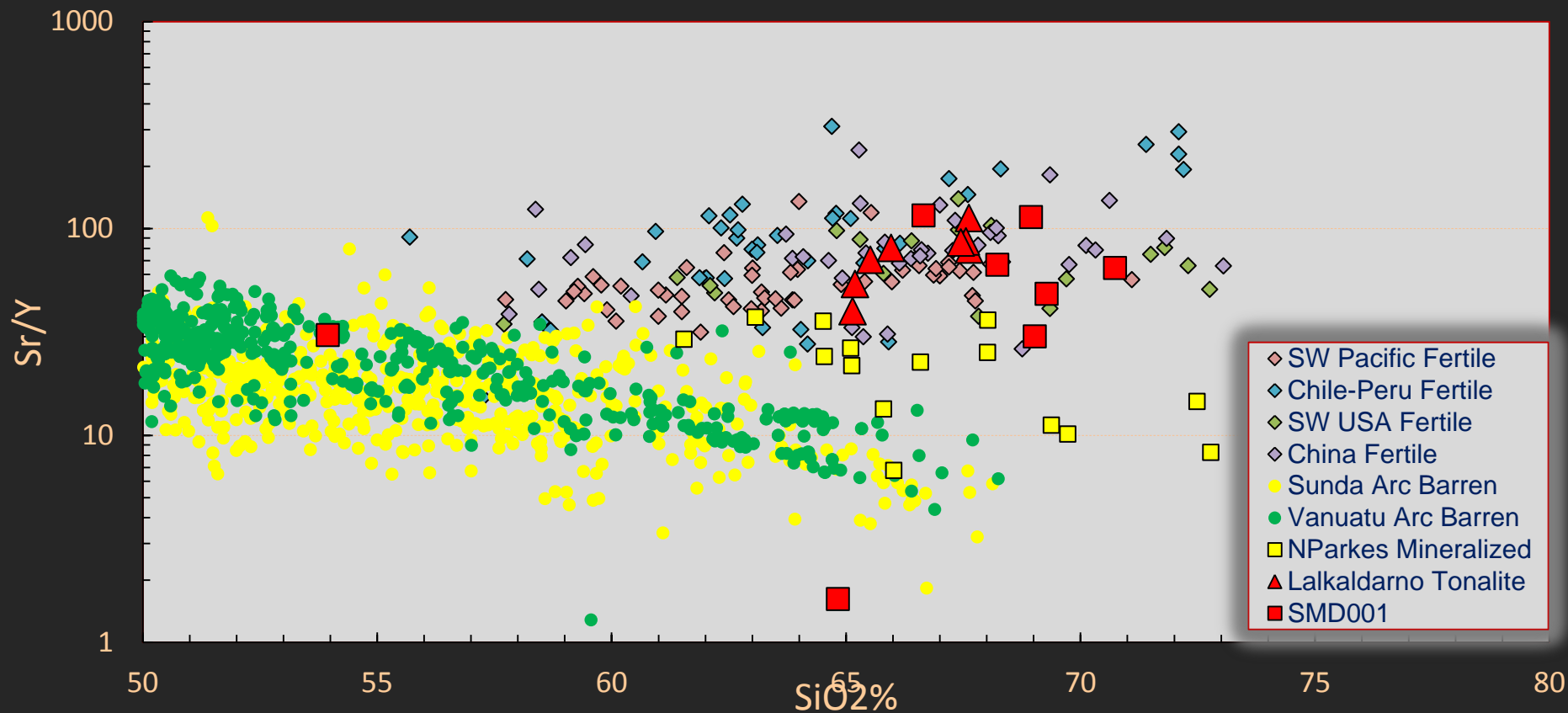
Why look for porphyries in western Victoria?



But what evidence that the Thursday's Gossan porphyry is an alkalic copper-gold porphyry?

- Zones of pervasive hematite alteration
- Strongly negative δ^{34} sulphur isotope values
- Metal ratios – gold and silver rich
 - **5m @ 1.4% copper, 0.25g/t gold and 11 g/t silver** from the Junction deposit
 - D-veins from Thursday's Gossan
 - **7.7 metres at 4.14% copper, 1.08 g/t gold and 77g/t silver**
 - **9.5 metres at 2.93% copper, 0.44g/t gold and 42 g/t silver**
 - **VSTD001 – 32m at 0.8% copper and 0.4g/t gold**
- Geochemical similarity with alkalic 'switch' in the Mt Read Volcanics – Tony Crawford, UTAS

¹ see ASX announcement dated 12 May 2014 and available from www.stavely.com.au



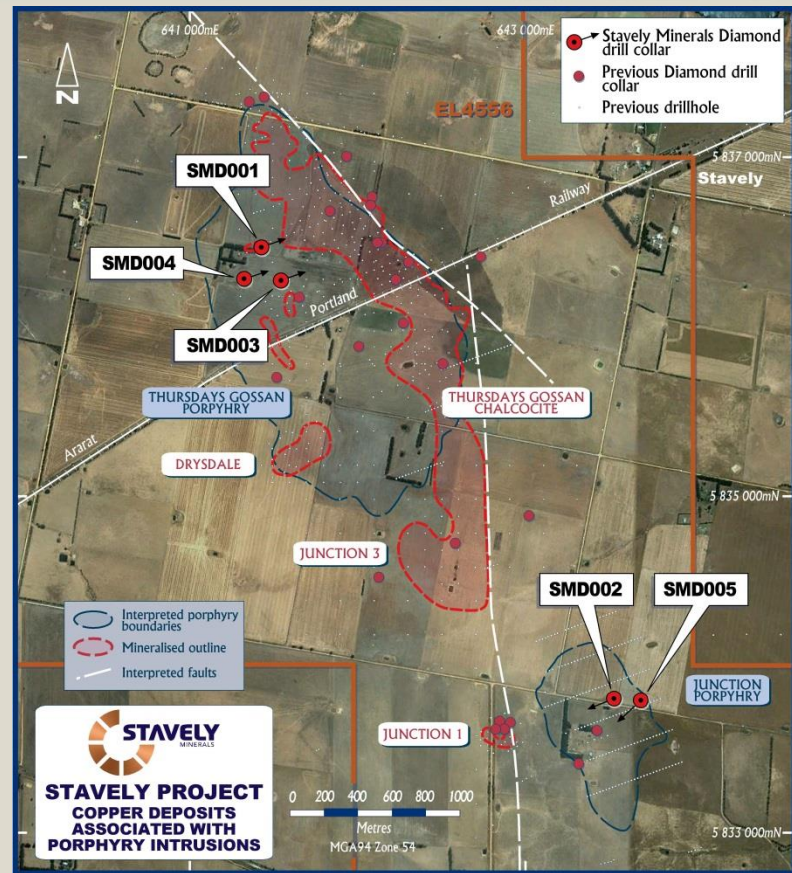
Plot provided by Professor Tony Crawford (UTAS), after Loukes, R.R., 2014, *Distinctive Composition of copper-ore-forming magmas*, in Australian Journal of Earth Sciences

STAVELY PROJECT

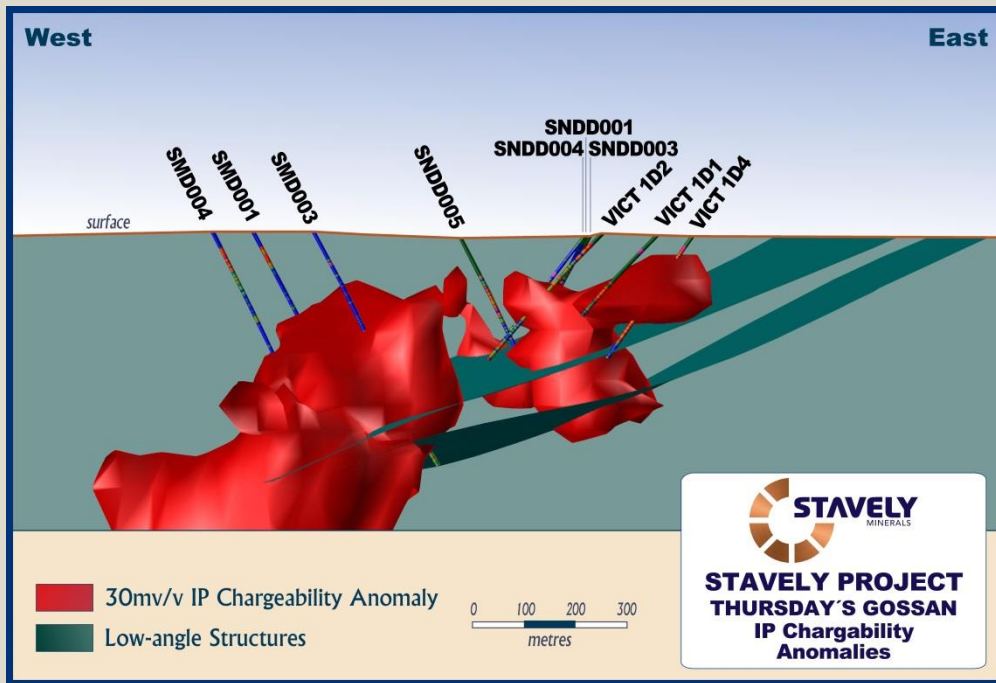


Thursday's Gossan Porphyry

Stavely Minerals drilled 3 deep diamond drill holes (between 532m to 640m deep) into an induced polarisation (IP) chargeability anomaly



Thursday's Gossan Porphyry



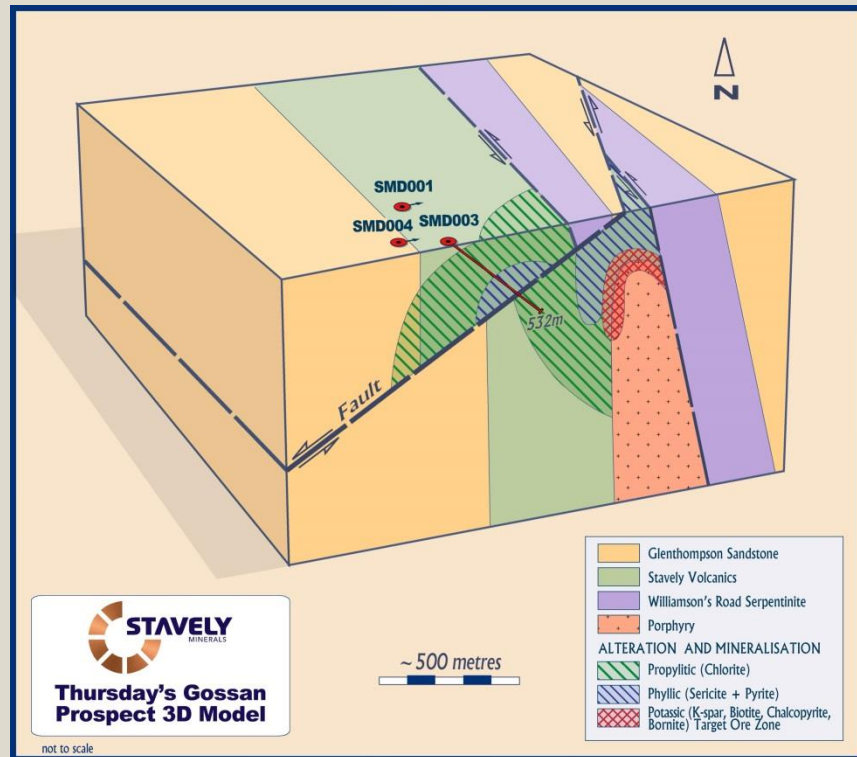
Drilling intercepted well-developed phyllic alteration (sericite-pyrite) which corresponded well with the IP chargeability anomaly

Thursday's Gossan Porphyry

The three deep diamond drill holes identified a low-angle structural offset to the porphyry system

Evidence that 'unroofing' of the system has triggered resurgent intrusion and mineralisation – best gold values to the NE eg:

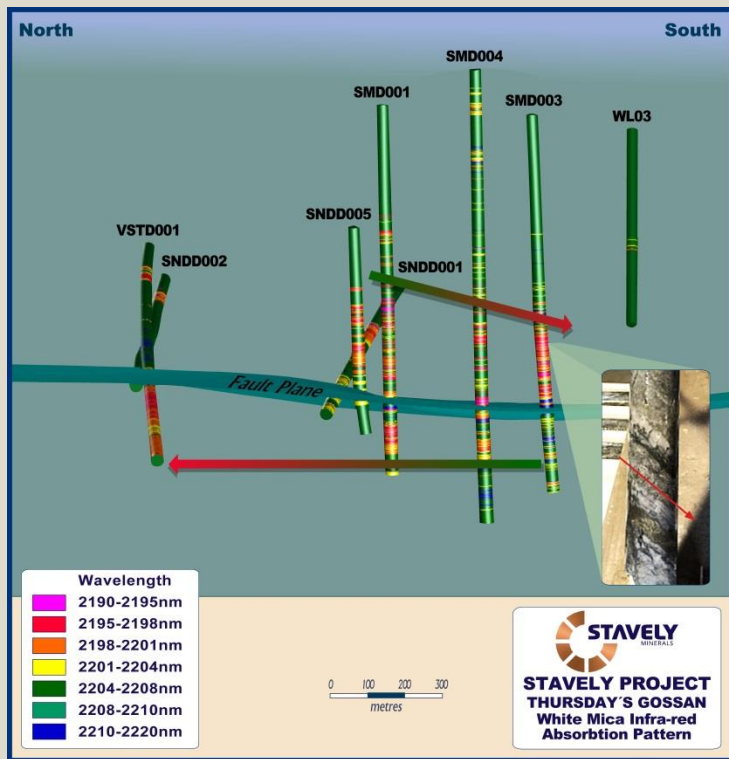
- 32m at 0.8% Cu and 0.4g/t gold – VSTD001



STAVELY PROJECT



Thursday's Gossan Porphyry



Structural analysis, kinematic indicators, white mica shortwave infra-red absorption features and sulphur isotope results all concur the porphyry 'core' has been transposed north and east beneath the structural zone.

What do investors need to take from this?

The target porphyry 'core' is yet to be discovered and we believe we have strong evidence indicating where it has gone.

¹ see ASX announcement dated 12 May 2014 and available from www.stavely.com.au

Thursday's Gossan Porphyry

- ✓ Very positive results from drilling the IP chargeability anomaly – increasingly intense alteration, very 'busy' drill core, low-grade copper mineralisation in peripheral alteration
- ✓ Intercepted a low-angle structure at ~400-480m depth – structural interpretation, kinematic indicators, white mica shortwave infra-red absorption features and sulphur isotopes all concur that the porphyry 'core' – where best developed copper-gold mineralisation could be expected – has been transposed to the north beneath the offset structural zone
- ✓ IP chargeability anomalies in areas predicted to host 'core'
- ✓ Additional drilling planned and seeking Victorian Government co-funding

The background features a dark blue field with a faint, large-scale radial grid pattern. A solid copper-colored vertical bar is on the left. The Stavelly Minerals logo is positioned in the upper right, featuring a circular emblem with four copper-colored segments and a dark blue center. The text 'STAVELY' is in large, bold, white capital letters, with 'MINERALS' in smaller white capital letters below it.

STAVELY
MINERALS

YARRAM PARK PROJECT

YARRAM PARK PROJECT



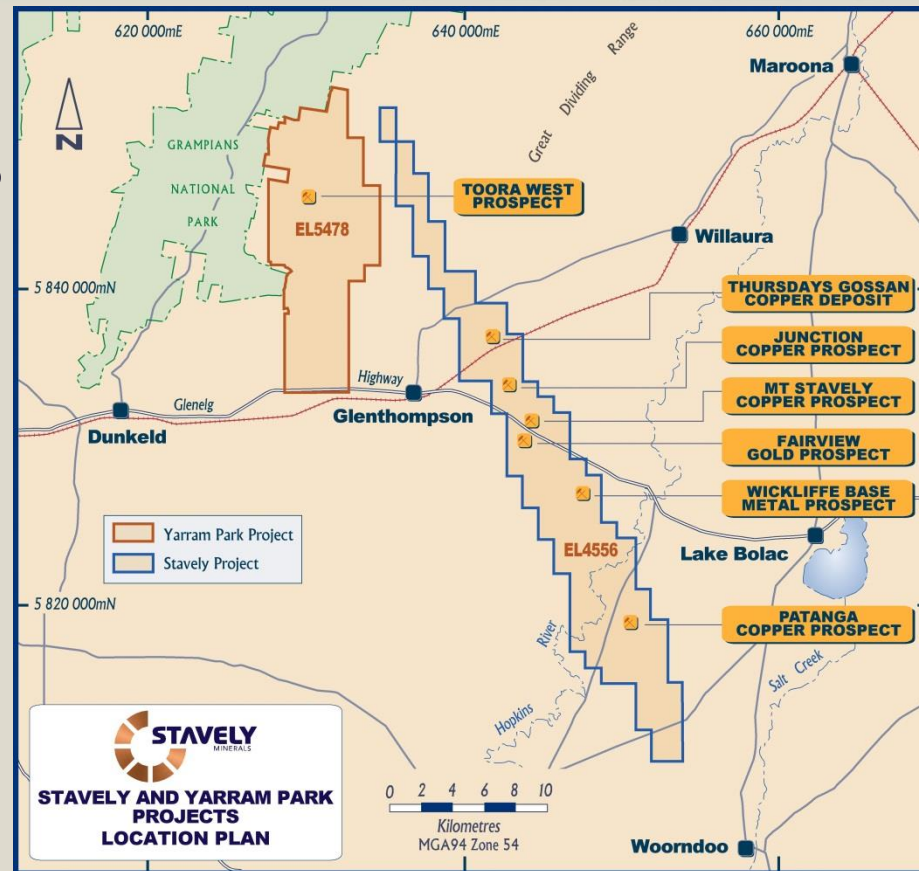
Yarram Park Project

Toora West Prospect is a coincident magnetic, gravity and IP chargeability anomaly consistent with a buried porphyry or sub-volcanic diatreme (ie. Mt Leyshon)

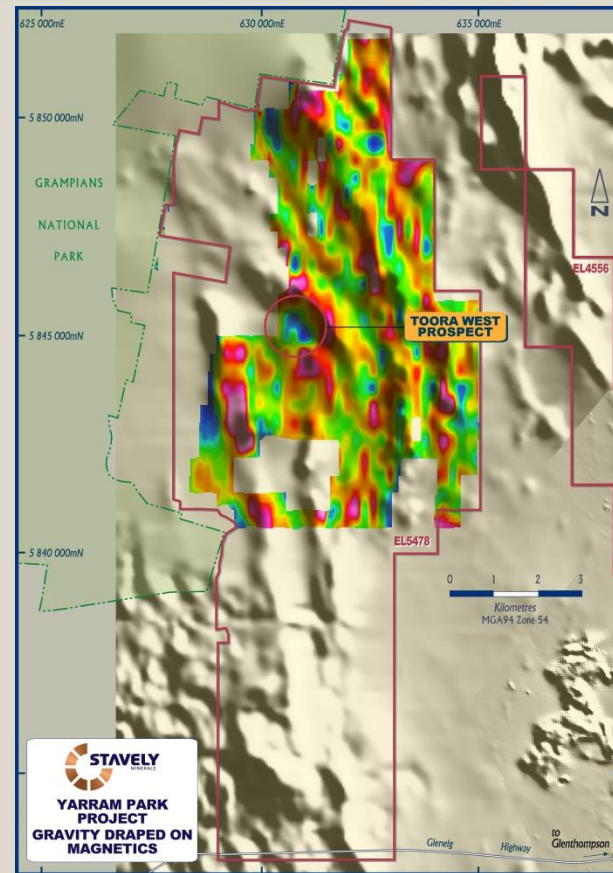
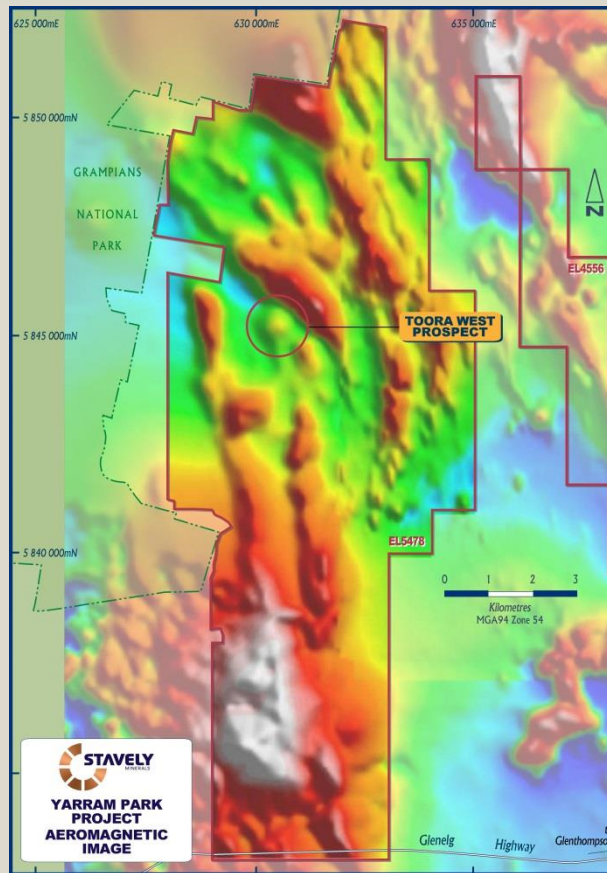
Nearest drill hole is 1.5 kilometres away indicating depth of transported cover is ~75m

Government co-funding application for additional IP and drilling

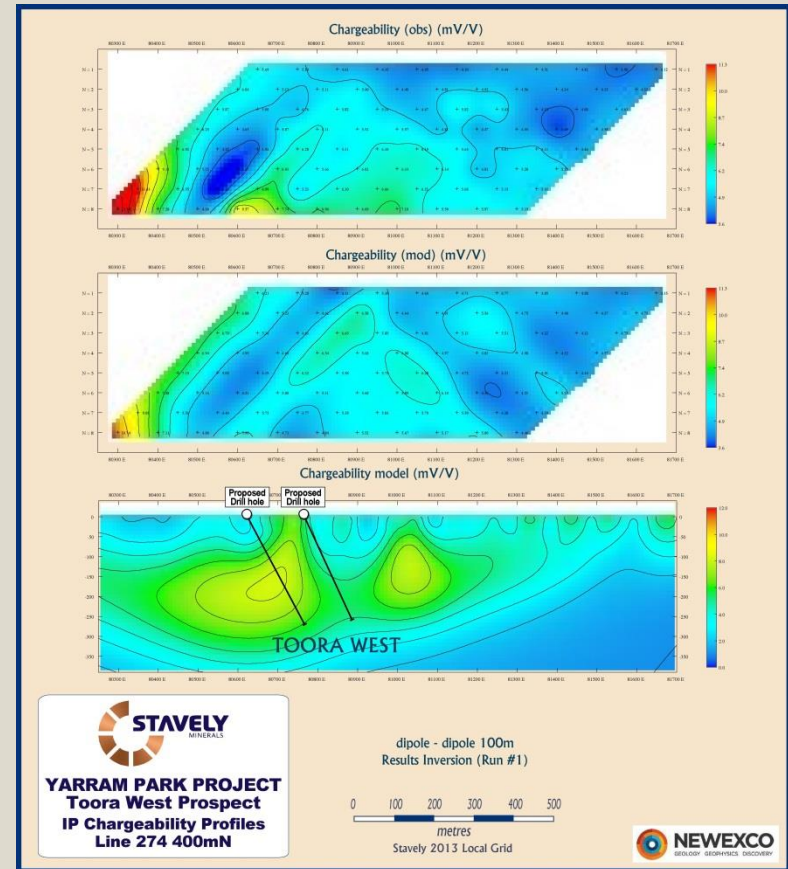
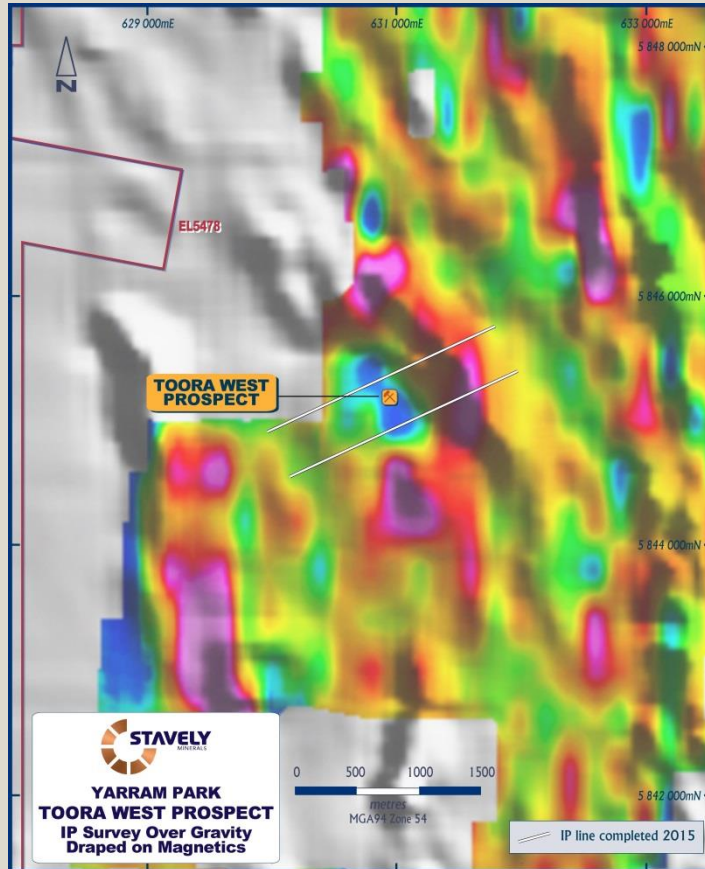
see ASX announcement dated 12 January 2016 and available from www.stavely.com.au



YARRAM PARK PROJECT



YARRAM PARK PROJECT



The background features a dark blue field with a faint, large-scale circular grid pattern. A central circular element is composed of four copper-colored segments arranged in a cross shape. On the left side of the image, there is a vertical bar with a copper-colored upper half and a white lower half. The Stavely Minerals logo is positioned in the upper right area, featuring the company name in white text.

STAVELY
MINERALS

RAVENSWOOD WEST PROJECT

RAVENSWOOD WEST PROJECT



Ravenswood West Project

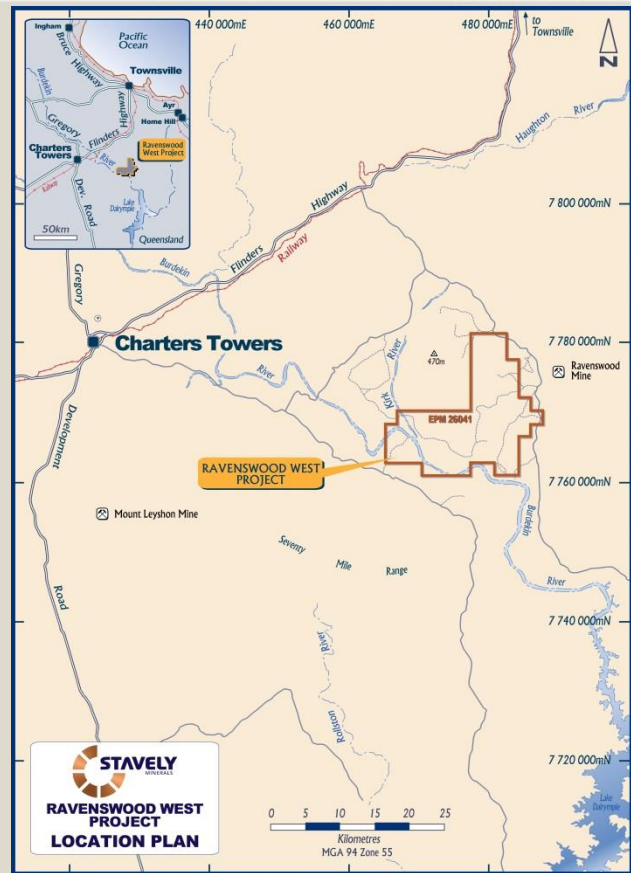
Metal-rich gold province with major historic and modern gold production:

Ravenswood – 4 million ounces

Charters Towers – 6.6 million ounces

Mt Leyshon – 2.5 million ounces

Pajingo - ?2 million ounces



RAVENSWOOD WEST PROJECT



Ravenswood West Project

4 porphyry prospects:

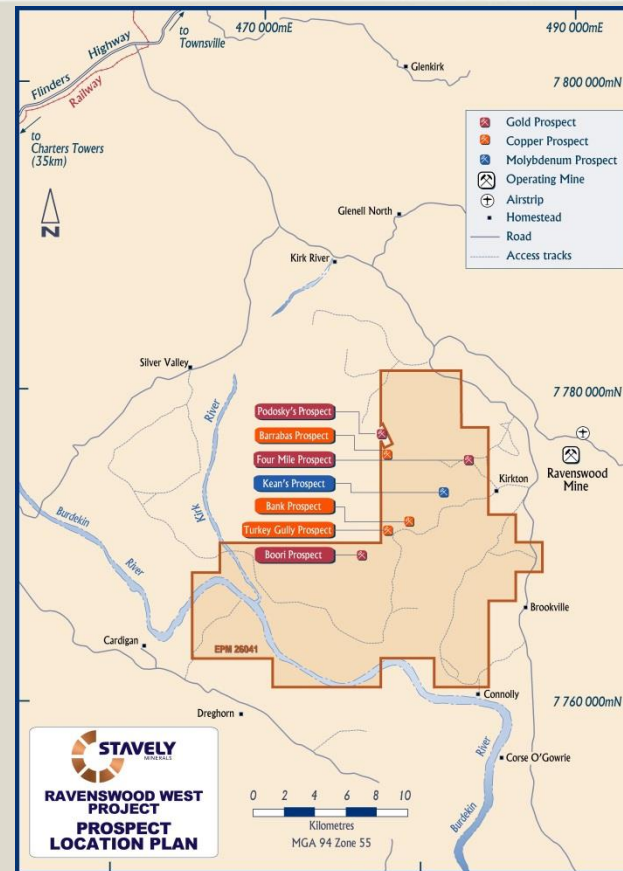
- The Bank
- Keans
- Barrabas
- Turkey Gully

3 gold prospects:

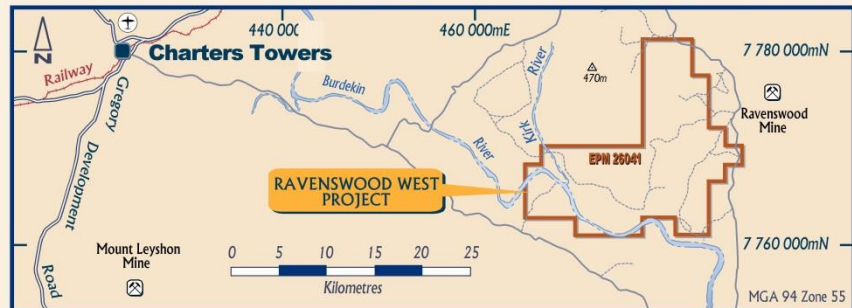
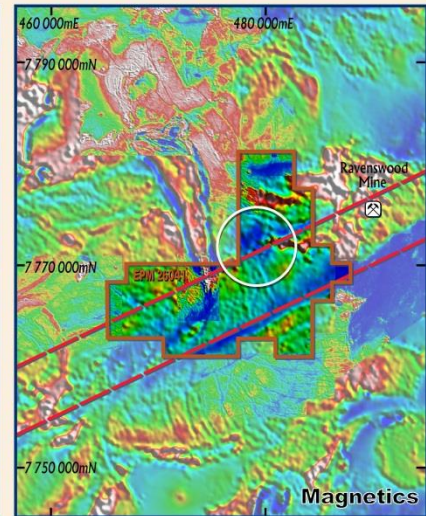
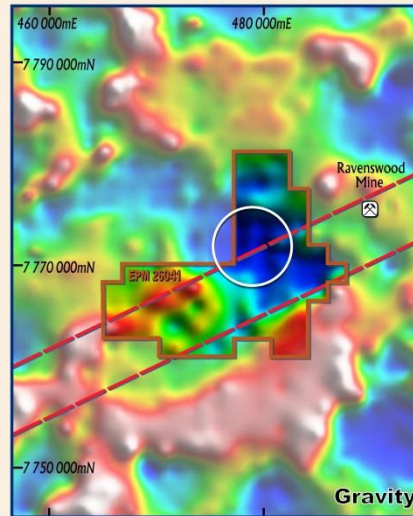
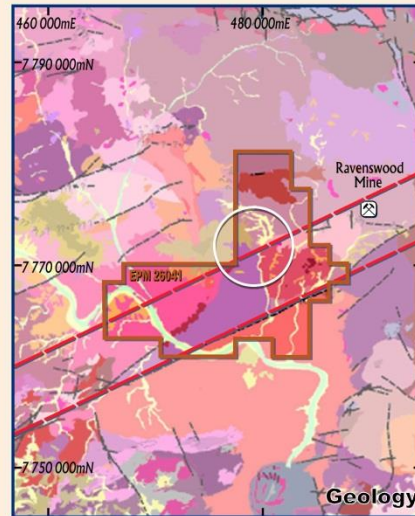
- Podosky's area
- Four Mile
- Boori

1970 – most recent drill hole

see ASX announcement dated 16 February
2016 and available from www.stavely.com.au



RAVENSWOOD WEST PROJECT

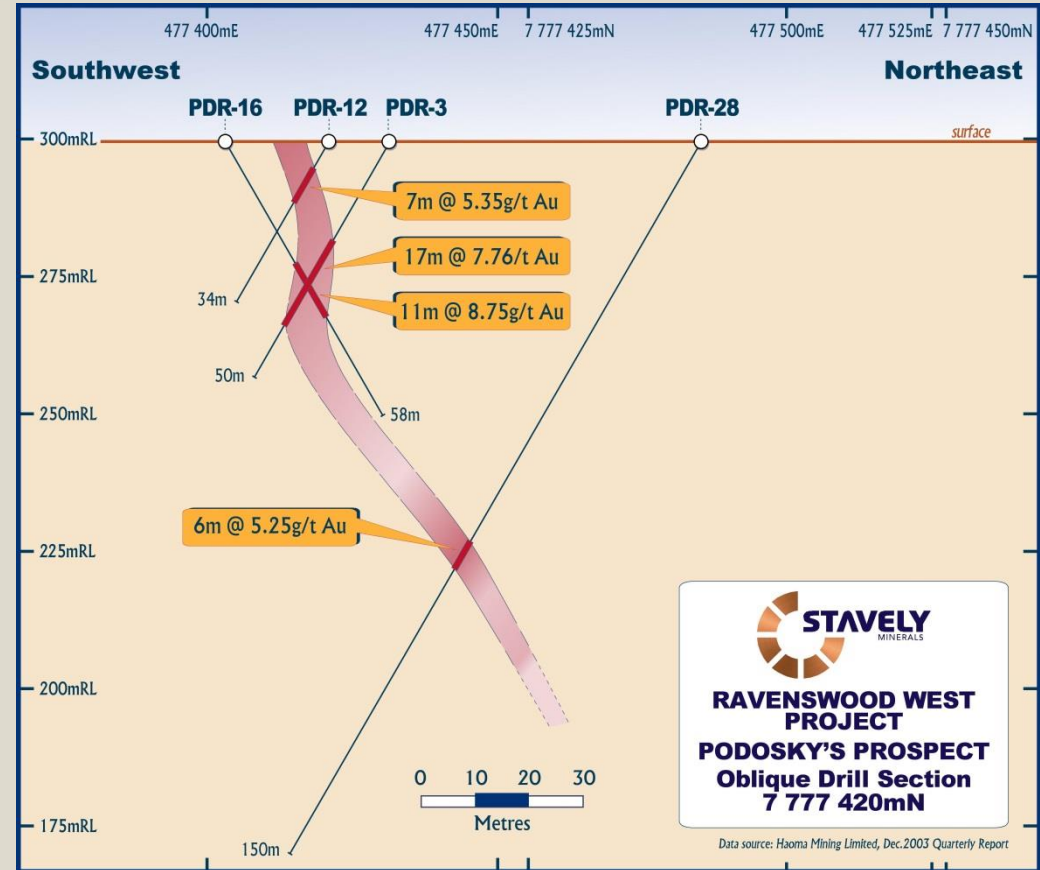


RAVENSWOOD WEST PROJECT



Podosky's Prospect (excised from EPM, owned by Kitchener Mining NL)

An example of high-grade
gold mineralisation in the
area



WORK PROGRAMMES



Work programmes

Stavely Project - Applications for drilling co-funding at Thursday's Gossan

Yarram Park Project - Applications for drilling co-funding, with additional IP, Yarram Park

Ararat Project - Soil survey in progress in the Ararat to highlight VMS exhalative centres and potential 'Stawell-' and 'Wonga-style' gold targets

Ravenswood West Project – Reconnaissance multi-element soils sampling and follow-up deep IP geophysics to define drill targets
Also, follow-up very strong rare earths stream sediment anomalism of 0.25% Ce and 0.13% La

Even though the market is crappy for explorers, we are still very active, we are getting results and are generating quality opportunities for discovery and value creation

Thank You

Contact Us:

Stavely Minerals Limited

Level 1, 168 Stirling Highway

Nedlands WA 6009

www.stavely.com.au

info@stavely.com.au

Ph: 08 9287 7630

The information in this presentation is extracted from information available to view on www.stavely.com.au. The company confirms that it is not aware of any new information or data that materially affects the information included in the original market announcement and, in the case of estimates of Mineral Resources or Ore Reserves, that all material assumptions and technical parameters underpinning the estimates in the relevant market announcement continue to apply and have not materially changed. The company confirms that the form and context in which the Competent Person's findings are presented have not been materially modified from the original market announcement.