



|         |   |           |                   |
|---------|---|-----------|-------------------|
| To      | Company Announcements Office                        | Facsimile | 1300 135 638      |
| Company | ASX Limited   | Date      | 19 September 2014 |
| From    | Helen Hardy   | Pages     | 8                 |
| Subject | Contact Energy Monthly Operational Data August 2014 |           |                   |

Attached herewith is a copy of an announcement released to the NZX by Contact Energy today.

Origin Energy holds 53.09% of quoted ordinary shares in Contact Energy Limited.

Regards

Helen Hardy  
Company Secretary

02 8345 5000 - [helen.hardy@originenergy.com.au](mailto:helen.hardy@originenergy.com.au)



## Monthly Operational Data

For the month ended 31 August 2014



# Highlights for August 2014

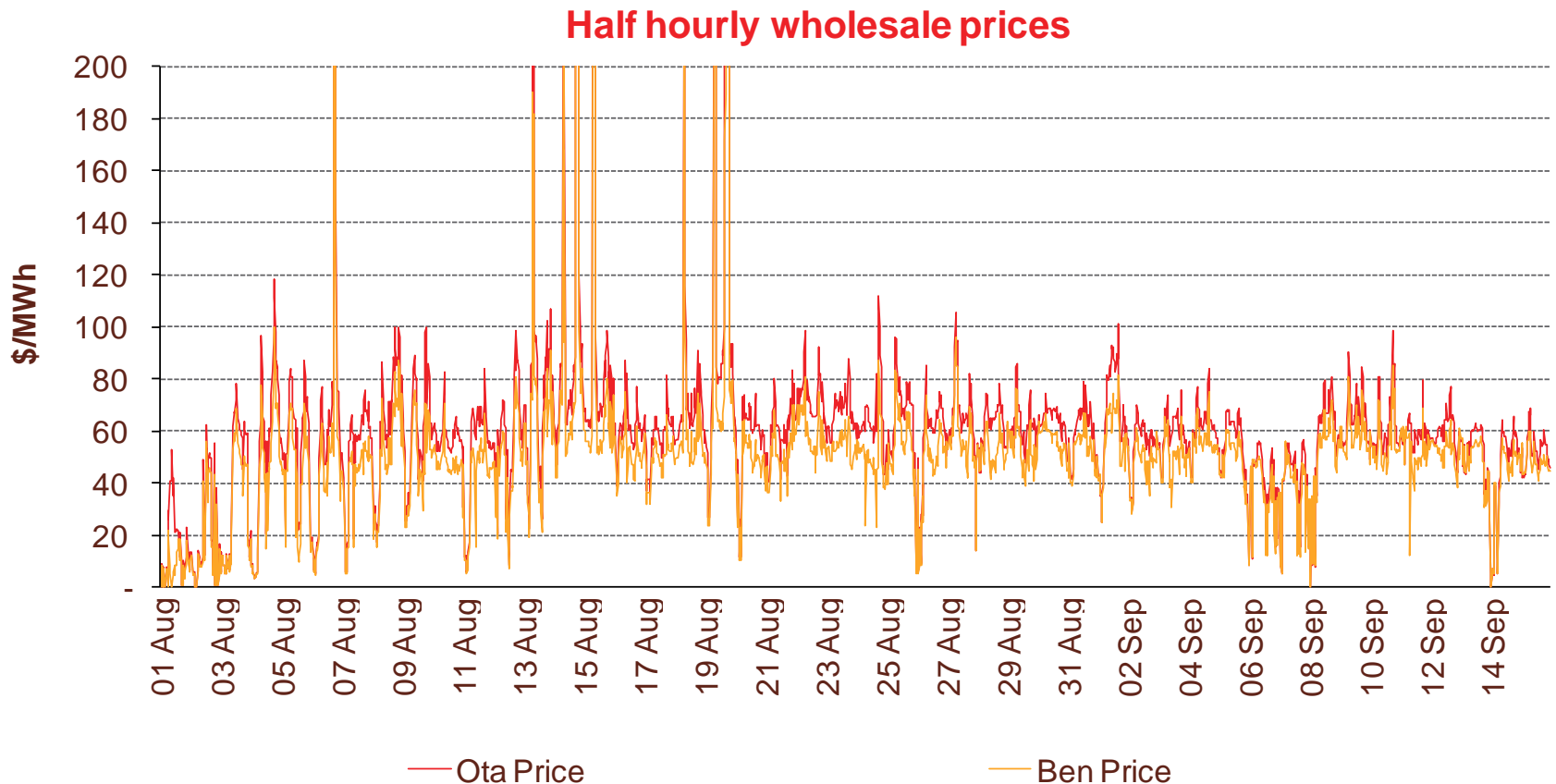
- **Hydro storage as at 31 August: South Island 123% of mean, North Island 70% of mean (p4)**
- **Average Otahuhu wholesale price for August 2014: \$75/MWh (p3)**
- **Otahuhu futures settlement wholesale price for 3rd quarter 2014 (ASX) (p4):**
  - As at 15 September: \$64/MWh
  - As at 31 August: \$62/MWh
  - As at 31 July: \$51/MWh

# Wholesale electricity prices

3

August 2014

- The average price at Otahuhu (North Island) for August 2014 was \$75/MWh while the average price at Benmore (South Island) was \$62/MWh.
- The average Otahuhu price from 1 September to 15 September 2014 was \$55/MWh. The average Benmore price over this period was \$49/MWh.



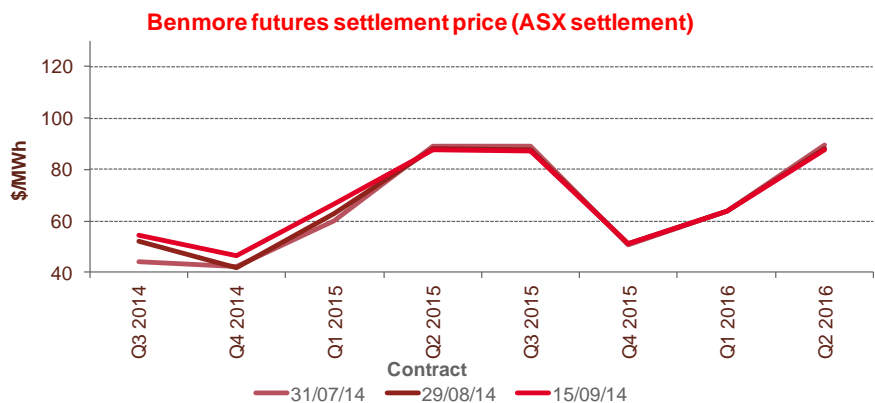
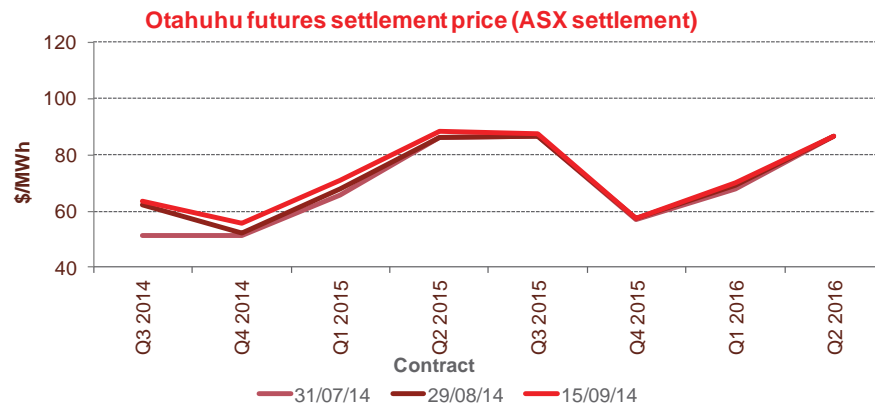
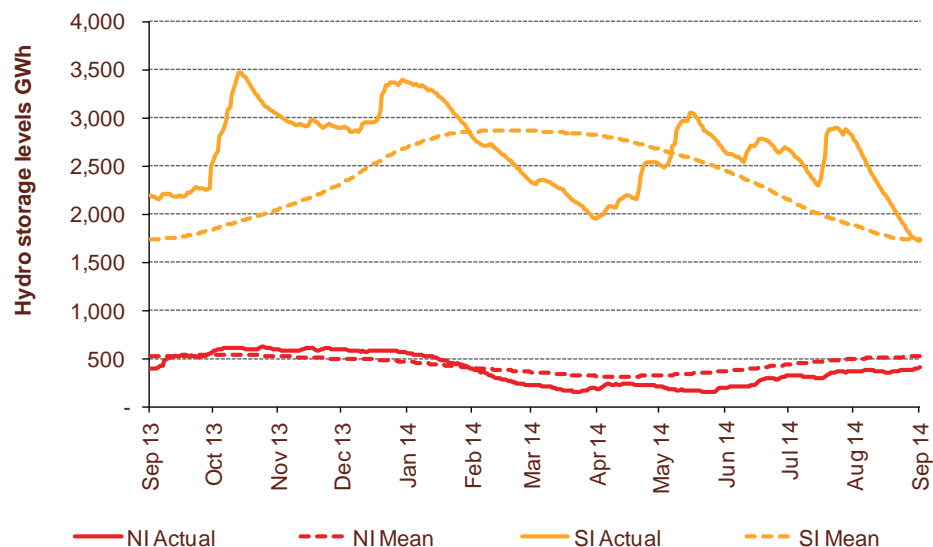
# Storage levels and wholesale electricity prices

4

August 2014

- At 31 August, South Island storage was 123% of mean (31 July: 118%) and North Island storage was 70% of mean (31 July: 65%)
- As at 16 September 2014, storage was:
  - South Island: 99% of mean
  - North Island: 77% of mean

Hydro storage

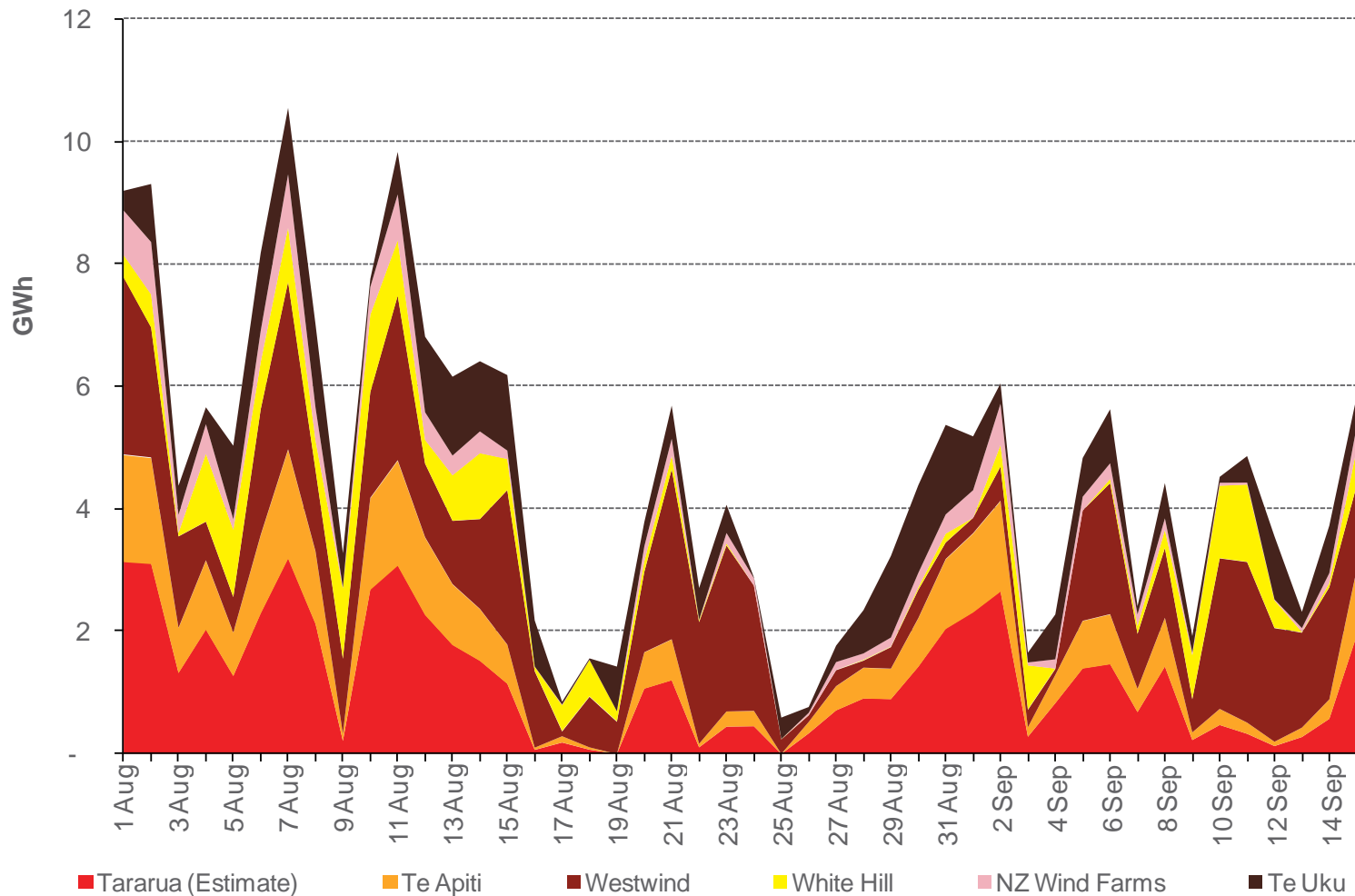


# Wind generation

5

August 2014

Daily wind generation (SCADA)



# Monthly demand comparison

6

August 2014

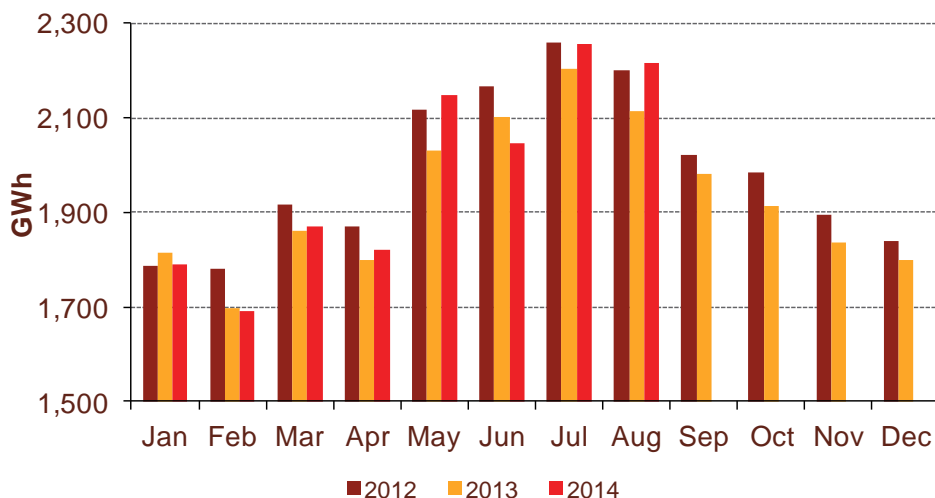
- NIWA's national climate summary for August 2014 reports:

- The New Zealand national average temperature in August was 8.7°C (0.1°C above the 1971-2000 average)

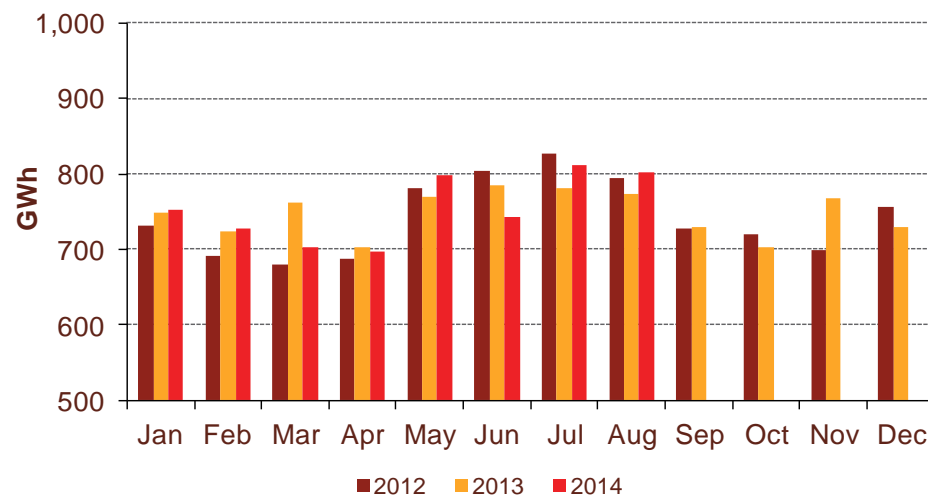
| Demand                       | 12 months to date<br>GWh |               |               | Growth rate<br>% p.a. |               | August demand<br>GWh |              |              | Growth rate<br>% p.a. |             |
|------------------------------|--------------------------|---------------|---------------|-----------------------|---------------|----------------------|--------------|--------------|-----------------------|-------------|
|                              | 2014                     | 2013          | 2012          | 1 year                | 2 year        | 2014                 | 2013         | 2012         | 1 year                | 2 year      |
| North Island                 | 23,367                   | 23,445        | 24,028        | (0.3%)                | (1.4%)        | 2,215                | 2,115        | 2,199        | 4.7%                  | 0.4%        |
| South Island excluding Tiwai | 8,965                    | 8,971         | 8,884         | (0.1%)                | 0.5%          | 801                  | 774          | 795          | 3.5%                  | 0.4%        |
| <b>Total</b>                 | <b>32,332</b>            | <b>32,416</b> | <b>32,912</b> | <b>(0.3%)</b>         | <b>(0.9%)</b> | <b>3,016</b>         | <b>2,889</b> | <b>2,994</b> | <b>4.4%</b>           | <b>0.4%</b> |

Source: SCADA data (Excludes embedded generation)

North Island



South Island excluding Tiwai



# Contact Netback, Cost of Energy and LPG Data

7

August 2014

| Data           |   | Measure | The month ended August 2014 | The month ended August 2013 | The month ended July 2014 | Two months ended August 2014 | Two months ended August 2013 |
|----------------|---|---------|-----------------------------|-----------------------------|---------------------------|------------------------------|------------------------------|
| Netback        | Mass market electricity sales                           | GWh     | 401                         | 374                         | 430                       | 831                          | 805                          |
|                | Commercial & industrial electricity sales               | GWh     | 362                         | 380                         | 364                       | 726                          | 736                          |
|                | Retail gas sales  | GWh     | 75                          | 70                          | 90                        | 165                          | 157                          |
|                | Steam sales   | GWh     | 67                          | 68                          | 34                        | 101                          | 95                           |
|                | Total retail sales                                      | GWh     | 904                         | 893                         | 918                       | 1,822                        | 1,793                        |
|                | Average electricity sales price                         | \$/MWh  | 186.41                      | 189.22                      | 202.14                    | 194.44                       | 195.38                       |
|                | Electricity direct pass through costs                   | \$/MWh  | 77.14                       | 77.20                       | 74.34                     | 75.71                        | 74.02                        |
|                | Electricity and gas cost to serve                       | \$/MWh  | 11.00                       | 11.19                       | 11.15                     | 11.08                        | 10.79                        |
|                | Netback   | \$/MWh  | 87.35                       | 89.08                       | 104.95                    | 96.22                        | 98.64                        |
|                | Actual electricity line losses                          | %       | 8%                          | 7%                          | 6%                        | 6%                           | 5%                           |
|                | Retail gas sales  | PJ      | 0.3                         | 0.3                         | 0.3                       | 0.6                          | 0.6                          |
|                | Electricity customer numbers <sup>1</sup>               |         | 438,500                     | 438,000                     | 438,500                   |                              |                              |
|                | Gas customer numbers <sup>1</sup>                       |         | 63,000                      | 62,000                      | 63,500                    |                              |                              |
| Cost of energy | Thermal generation                                      | GWh     | 73                          | 400                         | 195                       | 268                          | 757                          |
|                | Geothermal generation                                   | GWh     | 280                         | 194                         | 286                       | 566                          | 388                          |
|                | Hydro generation  | GWh     | 450                         | 360                         | 423                       | 873                          | 792                          |
|                | Spot market generation                                  | GWh     | 803                         | 953                         | 903                       | 1,706                        | 1,937                        |
|                | Spot electricity purchases                              | GWh     | 818                         | 798                         | 843                       | 1,648                        | 1,612                        |
|                | CfD sales   | GWh     | (17)                        | 62                          | 24                        | 7                            | 203                          |
|                | GWAP  | \$/MWh  | 68.15                       | 56.17                       | 57.07                     | 62.28                        | 55.06                        |
|                | LWAP  | \$/MWh  | 79.18                       | 61.88                       | 60.79                     | 70.40                        | 59.32                        |
|                | LWAP/GWAP   | %       | 116%                        | 110%                        | 107%                      | 113%                         | 108%                         |
|                | Gas used in internal generation                         | PJ      | 1.0                         | 3.3                         | 1.7                       | 2.7                          | 6.3                          |
|                | Wholesale gas sales                                     | PJ      | 0.1                         | 0.2                         | 0.0                       | 0.2                          | 0.2                          |
|                | Gas storage net movement                                | PJ      | 0.5                         | 0.2                         | 0.4                       | 0.8                          | 0.7                          |
|                | Unit generation cost                                    | \$/MWh  | 29.79                       | 46.93                       | 32.37                     | 31.16                        | 44.12                        |
|                | Net purchase cost                                       | \$/MWh  | 33.85                       | 44.99                       | 33.16                     | 33.50                        | 39.78                        |
| LPG            | LPG sales   | tonnes  | 6,789                       | 6,162                       | 7,425                     | 14,214                       | 13,163                       |
|                | LPG customer numbers (includes franchises) <sup>1</sup> |         | 67,000                      | 65,000                      | 67,000                    |                              |                              |

<sup>1</sup> Data has been rounded to the nearest 500 and reflects numbers as at month end.