



ASX: CIA

TSX: CIA

CIM Mineral Resource and Mineral Reserve Statement & Joint Ore Reserves Committee (JORC) Resource and Reserve Statement

Toronto, 27 October 2014: The board of Champion Iron Limited (ASX: CIA, TSX: CIA) ("Champion" or the "Company") is pleased to announce the initial Australasian Joint Ore Reserves Committee (JORC) Resource and Reserve Statement for its wholly owned subsidiary Champion Iron Mines Limited's flagship Consolidated Fire Lake North Project in the Labrador Trough, Québec, Canada (see Diagram 1 below).

A JORC compliant resource of over 1.2 billion tonnes (Bt), including 755 million tonnes (Mt) of Measured and Indicated metallurgically coarse grained hematite mineralisation for Consolidated Fire Lake North has been estimated. The successful spring 2014 drilling campaign data has been combined with data from the previous resource estimate reported under the Canadian National Instrument 43-101 ("NI 43-101") to produce this JORC estimate.

Table 1: October 2014 Fire Lake North Deposit Mineral Resource Estimate at Cut-off 15% Fe						
Category	Tonnage (Mt)	Fe (%)	SiO₂ (%)	Al₂O₃ (%)	P (%)	LOI (%)
Measured	40.3	34.19	48.31	1.28	0.015	0.21
Indicated	715.0	31.42	51.38	1.56	0.020	0.31
M+I Total	755.3	31.57	51.22	1.55	0.019	0.30
Inferred	461.0	31.83	49.64	2.22	0.032	0.37

The current Mineral Resource Estimate was calculated by P&E Mining Consultants Ltd. ("P&E") of Brampton, Ontario using the Canadian Institute of Mining, Metallurgy and Petroleum (CIM) Standards on Mineral Resources and Reserves and Definitions and Guidelines prepared by the CIM Standing Committee on Reserve Definitions. Mineral resources, which are not mineral reserves, do not have demonstrated economic viability. The mineral resource estimate may be materially affected by environmental, permitting, legal, title, taxation, socio-political, marketing, or other relevant issues. In addition, the quantity and grade of estimated Inferred Resources reported herein are uncertain and there has been insufficient exploration to categorize them as an Indicated or Measured Resource. Furthermore, it is uncertain whether further exploration will result in reclassification of Inferred Mineral Resources to the Indicated or Measured resource categories. The tonnage numbers are rounded according to NI 43-101 standards.

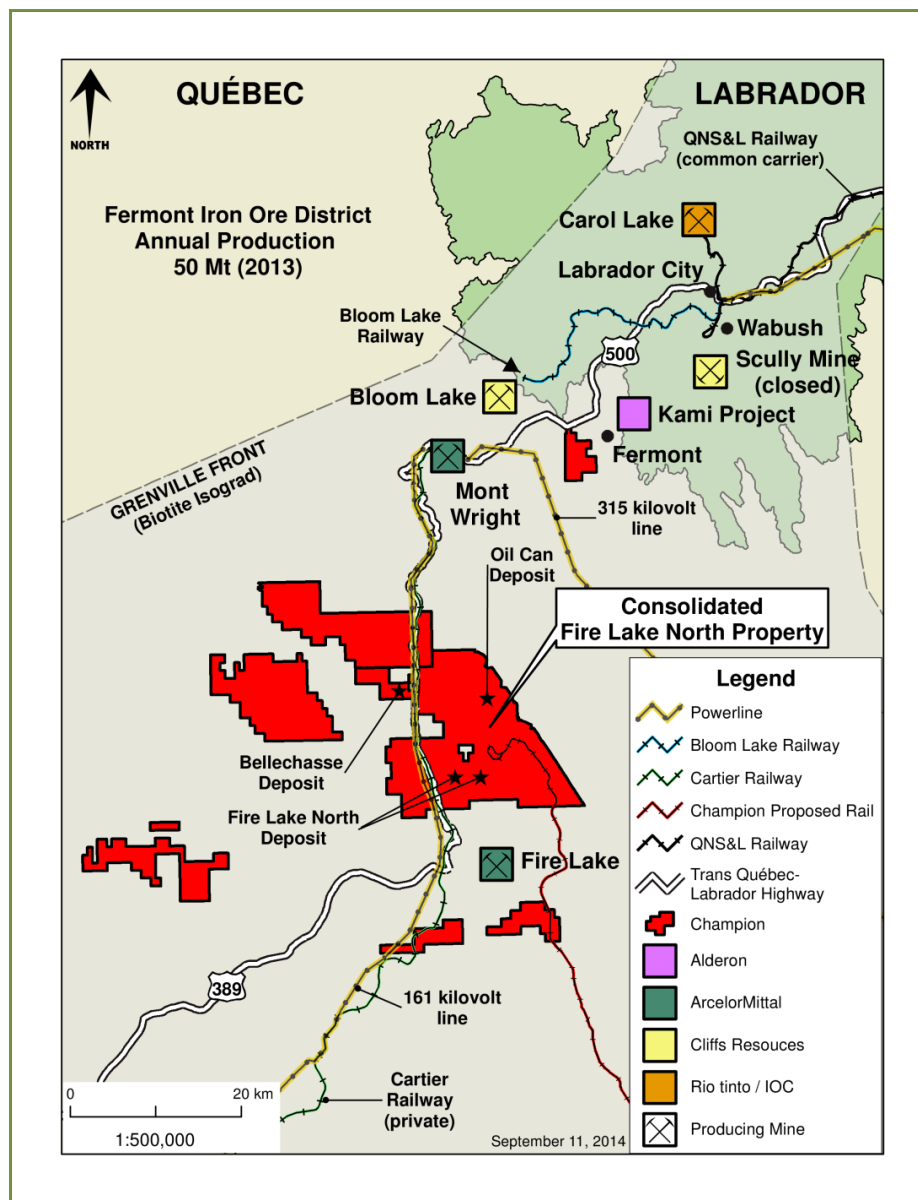
Further to the Resource Statement, Champion is also announcing the first Reserve Statement for the Consolidated Fire Lake North Project to comply with JORC. The JORC Reserve estimate totals approximately 464Mt of reserves with an estimated 23Mt, in the Proved category.

Table 2: 2013 Fire Lake North Deposit Mineral Reserve Estimate at Cut-off 15% Fe

(The current Ore Reserves as reported herein were estimated from the Mineral Resources as reported in the January 25, 2013 PFS. New ore Reserves will be estimated for the Feasibility Study, based on the current, updated Mineral Resource Estimate as reported herein)

Category	Tonnage (Mt)	Fe (%)	Weight Recovery (%)
Proved	23.7	35.96	45.00
Probable	440.9	32.17	39.58
Total	464.6	32.37	39.86

DIAGRAM 1: CONSOLIDATED FIRE LAKE NORTH PROJECT IN QUEBEC, CANADA



The board is pleased to advise that this JORC Reserve estimate is the same as the estimate found in the Prefeasibility Study reported under the Canadian National Instrument 43-101.

Champion's Chairman and CEO, Mr Michael O'Keeffe said the completion of work required for Champion to publish an inaugural JORC compliant resource of over 1.2Bt for Consolidated Fire Lake North, and the consistency of this information with the previously published NI 43-101 for the project, is an important development for the Company.

"At a time when we are attracting the interest of industrial and strategic investor groups, it is reassuring to have confirmation of the quality of our major asset and increased confidence in its potential," Mr O'Keeffe said.

Feasibility Study underway at Consolidated Fire Lake North

A new Reserve estimate will be calculated using the resource data found in today's announcement and will be used to underpin the Feasibility Study currently underway at Consolidated Fire Lake North.

The current reserve is expected to provide approximately 20 years feed to a beneficiation plant where between 9Mt and 10Mt of high grade metallurgically coarse hematite concentrate product aimed at the sinter market will be produced.

The new Resource estimate coincides with the recent province of Québec government announcement stating their ongoing commitment to reviewing options for the potential construction of a multi-user integrated rail system. In June, the Québec government advised it would set aside up to C\$20 million from its Plan Nord Fund for a Feasibility Study to determine the optimum rail option of a new rail link for iron ore miners in the Labrador Trough.

Champion is well advanced on all other aspects of the Consolidated Fire Lake North Feasibility Study and anticipates releasing the comprehensive report shortly after the above rail data are made publicly available by the government, allowing for the incorporation by Champion of the rail operating costs and related data.



IMAGE 1: PREMIUM HEMATITE PRODUCT

The Champion coarse grained concentrate product aimed at the sinter fines market is expected to command a premium in global markets.

The focus of the board and management remains on completing a full Feasibility Study for the development of a long-life, low-cost operation at Consolidated Fire Lake North yielding 9.3Mtpa of concentrate at 66% Fe which is expected to command a premium in global markets.

Michael O'Keeffe

Executive Chairman & CEO

Tel: +1 514-316-4858

www.championiron.com

Media & Investor Enquiries, please contact:

Fortbridge Bill Kemmery +61 400 122 449 or bill.kemmery@fortbridge.com

The technical information in this press release was prepared and reviewed by Ms. Tracy Armstrong, P. Geo. (OGQ) and Mr. Antoine Yassa, P. Geo. (OGQ) each an independent consultant contracted by P&E Mining Consultants Inc. and Mr. Patrice Live Ing. (OIQ) of BBA Inc.

ABOUT CHAMPION IRON LIMITED

Champion is an iron exploration and development company with offices in Montreal, Toronto and Australia, and is focused on developing its significant iron resources in the Labrador Trough in the province of Québec. Champion holds a 100% interest in the Fermont Iron Holdings, including its flagship Consolidated Fire Lake North Project, that is located in Canada's major iron ore producing district, in close proximity to producing iron mines, existing transportation and power infrastructure.

Consolidated Fire Lake North is located immediately north of Arcelor Mittal's operating Fire Lake Mine and 60 km south of Cliffs Natural Resources Inc.'s Bloom Lake Mine in northeastern Québec. Champion's management and advisory board includes mining and exploration professionals with the mine development and operations experience to build, commission and operate the future Consolidated Fire Lake North mine.

For additional information on Champion Iron Limited, please visit our website at www.championiron.com.

This news release includes certain information that may constitute "forward-looking information" under applicable Canadian securities legislation. Forward-looking information includes, but is not limited to, statements about planned operations at the Company's projects, including its joint venture projects. Forward-looking information is necessarily based upon a number of estimates and assumptions that, while considered reasonable, are subject to known and unknown risks, uncertainties, and other factors which may cause the actual results and future events to differ materially from those expressed or implied by such forward-looking information, including the risks identified in Champion's annual information forms, management discussion and analysis and other securities regulatory filings by Champion on SEDAR (including under the heading "Risk Factors" therein). There can be no assurance that such information will prove to be accurate, as actual results and future events could differ materially from those anticipated in such forward-looking information. Accordingly, readers should not place undue reliance on forward-looking information. All of Champion's forward-looking information contained in this press release is given as of the date hereof and is based upon the opinions and estimates of Champion's management and information available to management as at the date hereof. Champion disclaims any intention or obligation to update or revise any of its forward-looking information, whether as a result of new information, future events or otherwise, except as required by law.

This press release has been prepared by Champion Iron Limited and no regulatory authority has approved or disapproved the information contained herein.