



29 October 2014

**Re: Investor Presentation - Mining2014 Conference: Brisbane**

Attached is the presentation to be given by Managing Director, Mr John Anderson at the Mining2014 Conference in Brisbane on Thursday 30 October 2014.

**For further information contact:**

Mr John Anderson  
Managing Director  
Investigator Resources Limited  
Phone: 07 3870 0357

# **Multiple silver-lead & copper-gold discovery opportunities**

## **To build on the Paris silver project**

**INVESTIGATOR  
RESOURCES  
LIMITED**



**ASX : IVR**

**In an emerging belt & first-world jurisdiction**

**Well funded and drilling**

Investor Presentation: 30<sup>th</sup> October 2014

MINING2014 Conference: Brisbane Australia

# Disclaimer & Competent Person Statement



## DISCLAIMER

The information in this presentation is published to inform you about Investigator Resources Limited and its activities. Some statements in this presentation regarding estimates or future events are forward looking statements. They involve risk and uncertainties that could cause actual results to differ from estimated results. All reasonable effort has been made to provide accurate information, but we do not warrant or represent its accuracy and we reserve the right to make changes to it at any time without notice.

To the extent permitted by law, Investigator Resources Limited accepts no responsibility or liability for any losses or damages of any kind arising out of the use of any information contained in this presentation. Recipients should make their own enquiries in relation to any investment decisions.

## COMPETENT PERSON STATEMENT

The information in this presentation relating to exploration results is based on information which has previously been released to the market and was compiled by Mr. John Anderson who is a full time employee of the company. Mr. Anderson is a member of the Australasian Institute of Mining and Metallurgy. Mr. Anderson has sufficient experience of relevance to the styles of mineralisation and the types of deposits under consideration, and to the activities undertaken, to qualify as a Competent Persons as defined in the 2012 Edition of the Joint Ore Reserves Committee (JORC) Australasian Code for Reporting of Exploration Results, Mineral Resources and Ore Reserves. Mr. Anderson consents to the inclusion in this presentation of the matters based on information in the form and context in which it appears.

The information in this presentation that relates to Mineral Resources Estimates at the Paris Project is extracted from the report entitled “Maiden Resource Estimate for Paris Silver Project, South Australia” dated 15 October 2013 and is available to view on the Company website [www.investres.com.au](http://www.investres.com.au). The Company confirms that it is not aware of any new information or data that materially affects the information included in the original market announcements and that all material assumptions and technical parameters underpinning the estimates in the relevant market announcement continue to apply and have not materially changed. The company confirms that the form and context in which the Competent Person’s findings are presented have not been materially modified from the original market announcement.







## Strategy

Greenfields explorer with the right track record

Focus on the southern Gawler Craton of South Australia

## Advantages

Strong ground holding

Based on innovative ideas and approach

Foundation Paris silver resource - 20Moz

First mover advantages in rolling out Paris expertise

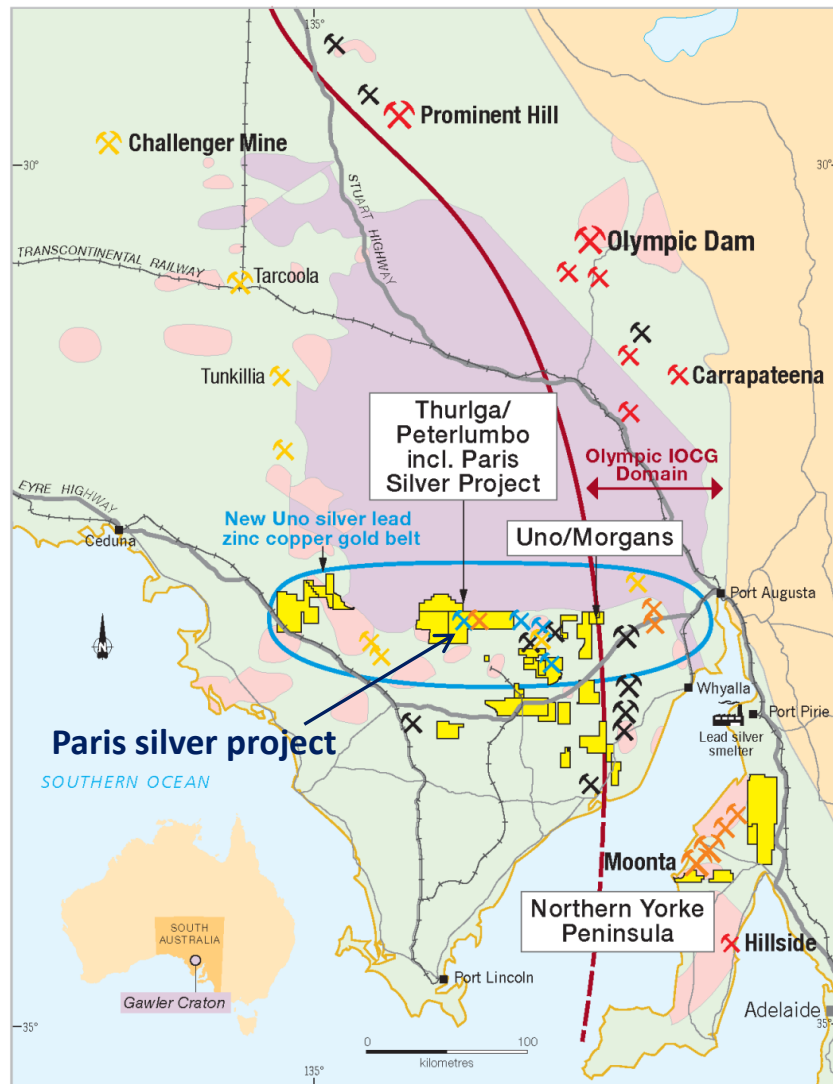
Multiple discovery opportunities – silver-lead & copper-gold

Well funded – raised \$4.8m plus \$2.3m R&D rebate mid-2014

Drilling to unlock the mineral potential of an emerging belt



# Strong tenement holding in emerging belt



IVR and JV tenement

Key IVR target areas

## Prime geology

Gawler Range Volcanics

Hiltaba Granite

Gawler Craton

## Pedigree with emerging extensions

Iron oxide copper/gold+/-uranium mine, deposit

Iron ore mine, deposit

Gold mine, deposit

Silver lead zinc deposit, prospect

Copper prospect

## Close to infrastructure

Major cities

Highways, rail

Port Pirie lead-silver smelter

# Corporate Overview



## Capital Structure

ASX listed since 2007	IVR
Shares (ordinary)	462.3M
Options (Listed)	114.2M
Options (unlisted)	10.3M
Share Price (27 October 2014)	2.8c
Options Price “ “ “	0.6c
Market Cap (A\$m)	\$13M
Cash (30 September 2014)	\$6.11M

## Share Register as at 27 October 2014

CITIC Australia (Since IPO 2007)	14.5%
Acorn Capital (Since 2011)	6.0%
Board & Management	2.7%
Top 20	37.5%
Total shareholders	3,577

## Board & Management

Roger Marshall OBE	Chairman
Bruce Foy	Non Exec Director
David Jones	Non Exec Director
John Anderson	Managing Director
Garry Gill	Co. Secretary/CFO
Alex Thin	Commercial Manager



## Offices

Corporate - Toowong in Brisbane (Qld)  
Operations - Norwood in Adelaide (SA)

# Paris silver project

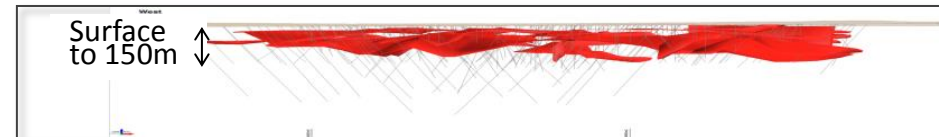
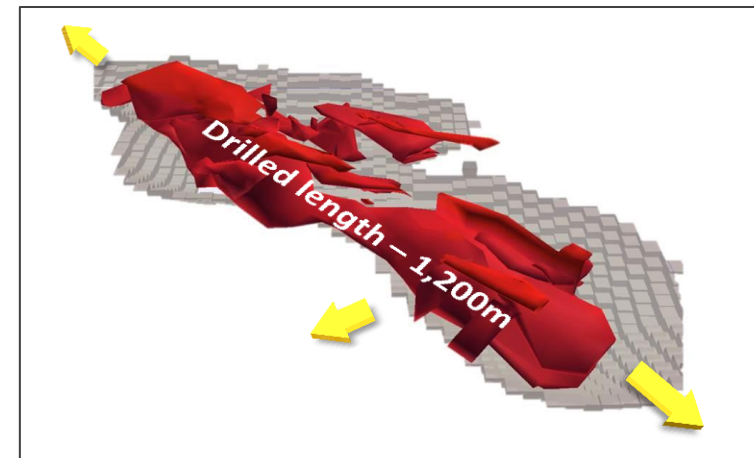


Category	Tonnes	Grade	Contained silver	Grade	Contained Lead
Inferred	5.9Mt	110g/t Ag	20Moz	0.6% Pb	38kt

Based on a cut-off grade of 30g/t Ag

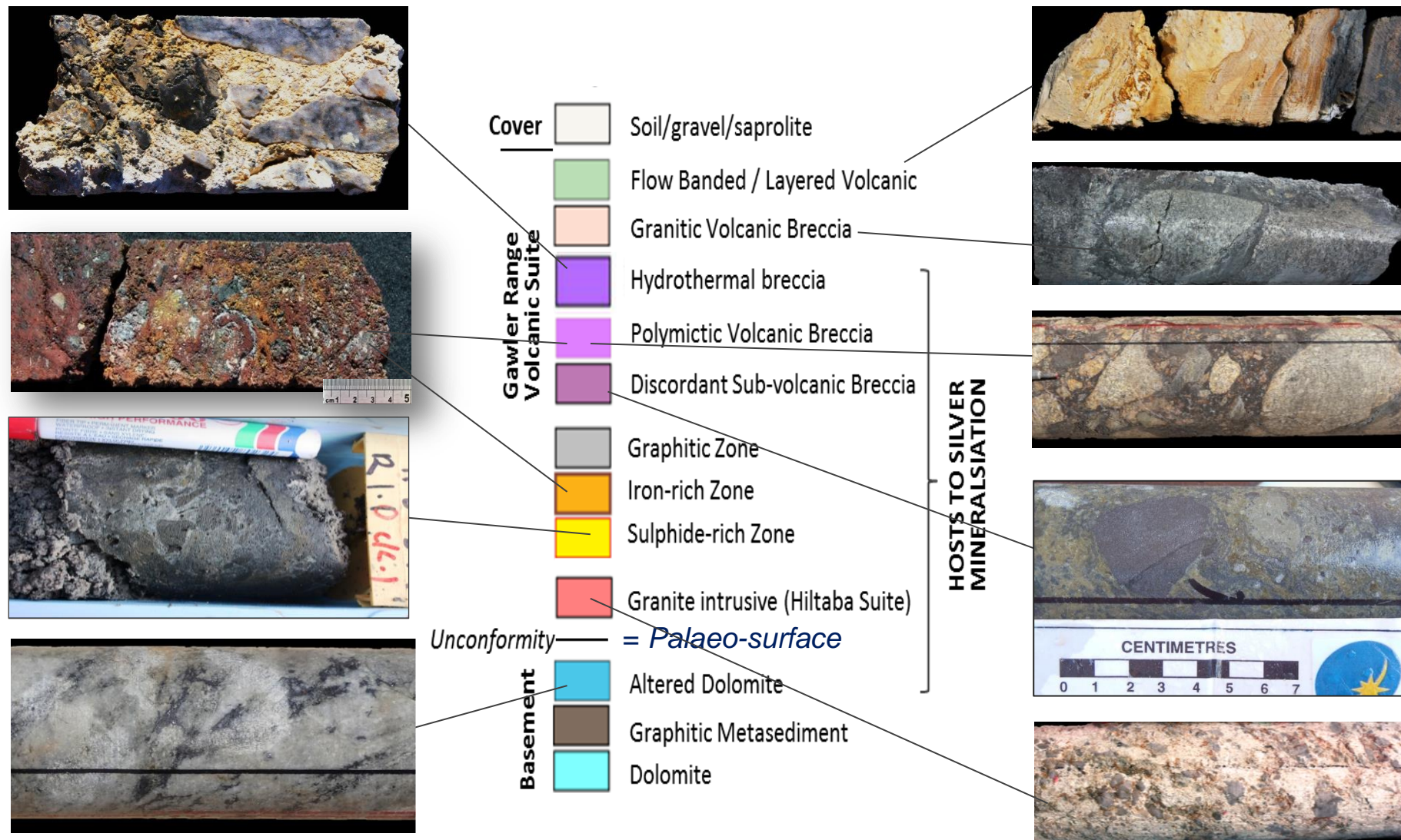
## Five Key Points:

1. **The Grade** - 110g/t Ag grade is among the highest silver grades in Australia
2. **The Ounces** - 20Moz is just the start
3. **It's Shallow & Soft** - 5 to 150m from surface
4. **Preliminary Metallurgy** – positive recoveries indicate conventional pathways & optimisation potential
5. **High grade component** - About 30% of the resource tonnes contains 60% of the contained silver ounces





# Complex alteration & breccia geology resolved & being used to identify new prospects





# The Paris target model being applied regionally



## Paris Deposit Model Section:

- Flat-lying epithermal *breccia* deposit
- **Around vent at the base of altered volcanic pile**

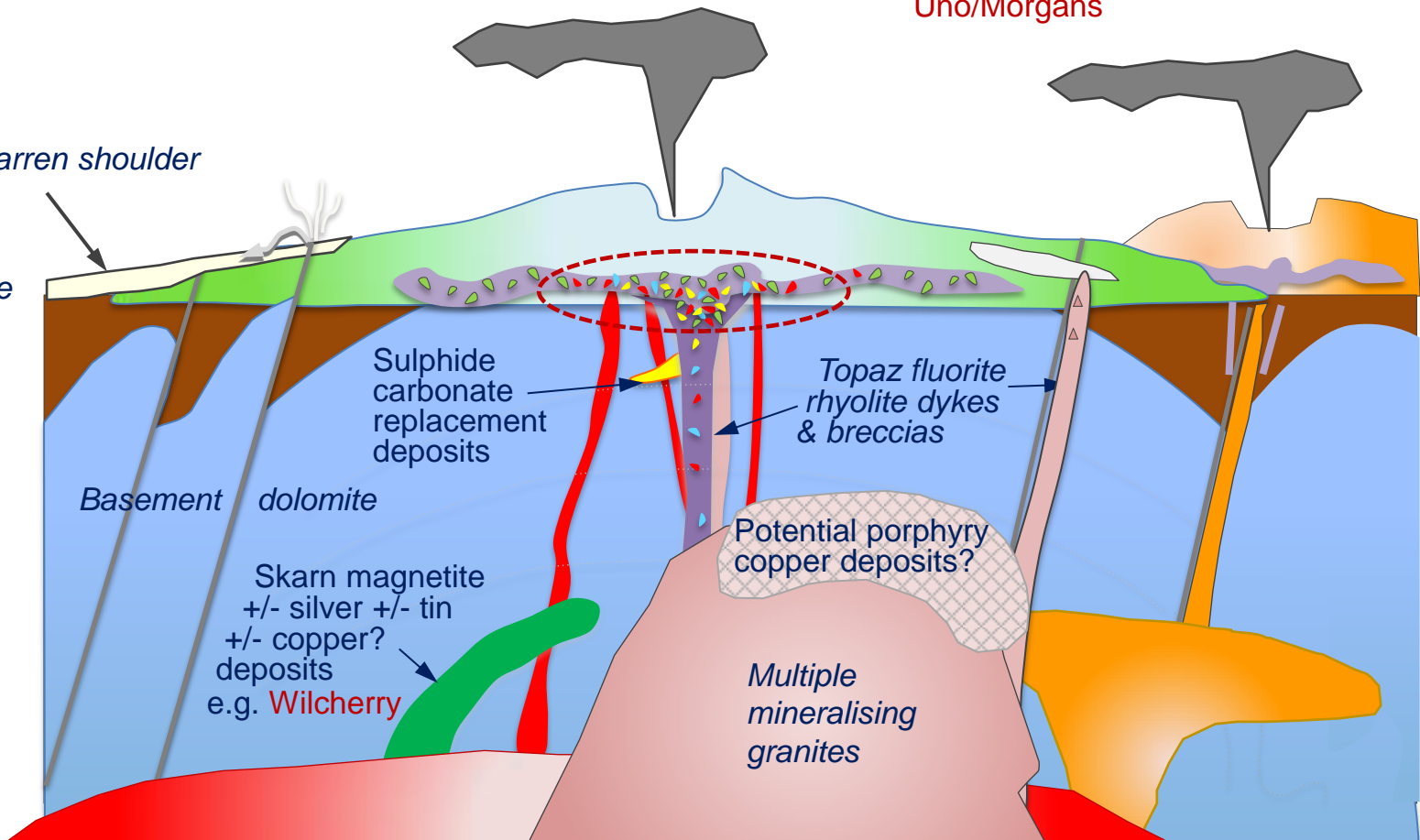
Expected repetitions around Paris & in other fields  
in multiple volcanic centres along mineralising structures

e.g. Helen/Diomedes  
Ajax  
Uno/Morgans

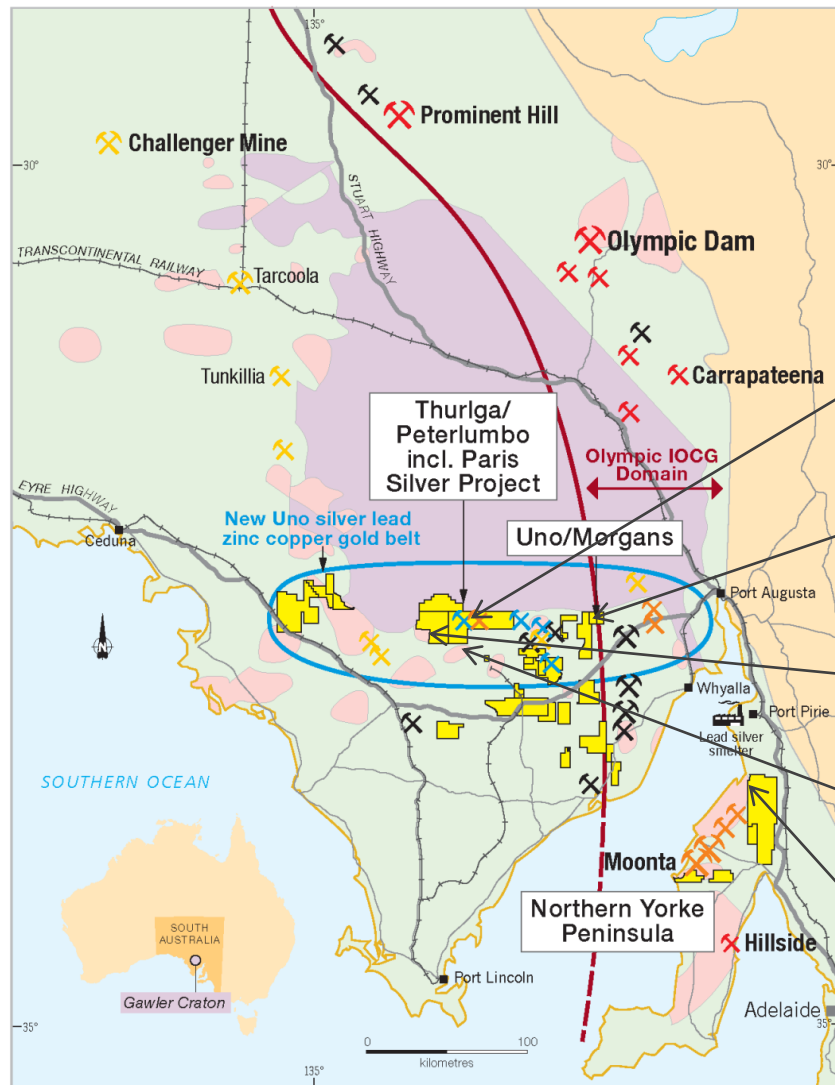
Lateral barren shoulder

Palaeo-surface

2km



# Advances in September 2014 quarter



**Maintaining a strong exploration program to build on the Paris resource at time of cheaper costs**

**Efficient scout drilling of new satellite targets**

13,567m/127 holes at Peterlumbo

-> 3 new silver-lead systems around Paris

-> confirmed multiple copper-gold targets

2,886m/42 holes at Uno/Morgans

-> Hurricane lead-zinc target

**Thurlga Joint Venture farm-in**

Secured more prospective length of Uno Fault

To apply IVR's successful approach

**VTEM & magnetic surveys** at Peterlumbo &

Thurlga aiding silver-lead & copper-gold targeting

**Land access negotiations on Yorke Peninsula**

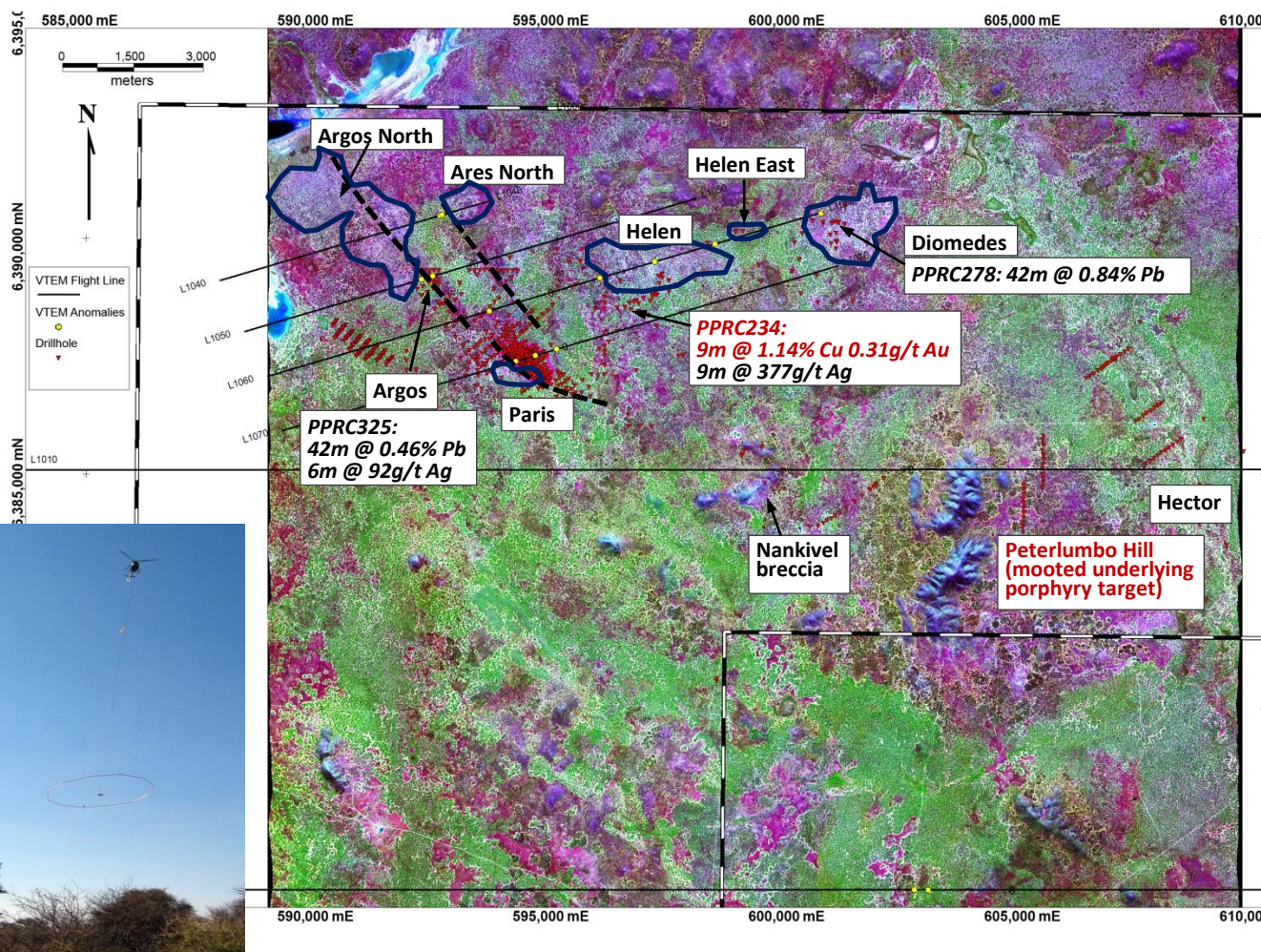
towards drilling Roundabout/Spyall IOCG targets on thinly-covered extensions to historic copper field



# Iterating latest drill results around Paris



## Hyperspectral & VTEM surveys



### New drilling reveals:-

- 1) 3 potential large\* new silver-lead systems 5 – 7km from Paris: Diomedes & Argos/Ares North plus at Ajax (off map)

Supported by revisit of spectral image & recent government VTEM survey

Large areas of undrilled potential

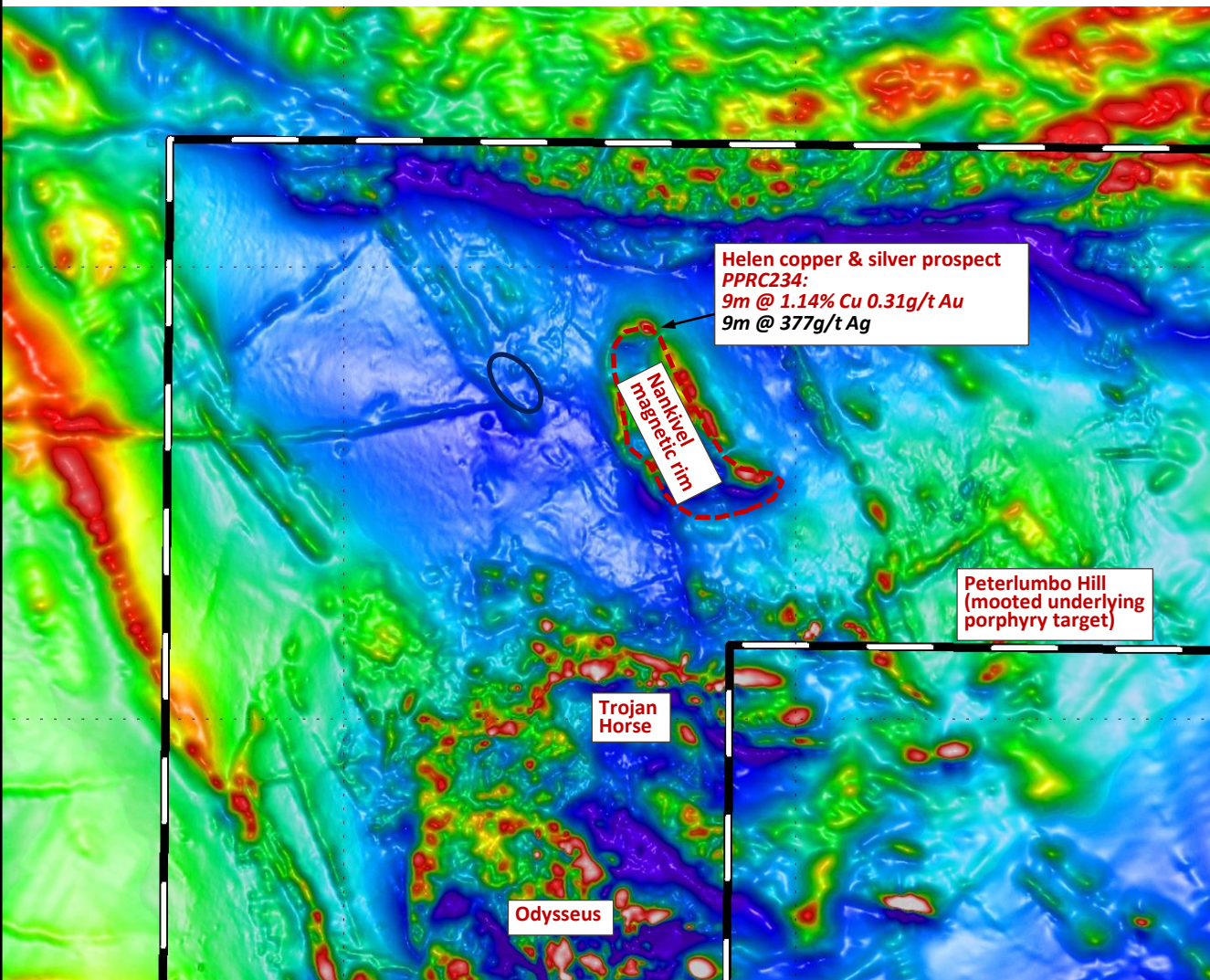
Electrical geophysics being considered to assist follow up drilling

5km

\*Note scale



# New magnetic copper-gold targets



## New drilling reveals:-

- 2) New magnetic copper-gold targets

**Nankivel granodiorite rim\***

**Trojan Horse (drill-ready)**

**Odysseus\***

- *Needs heritage survey*

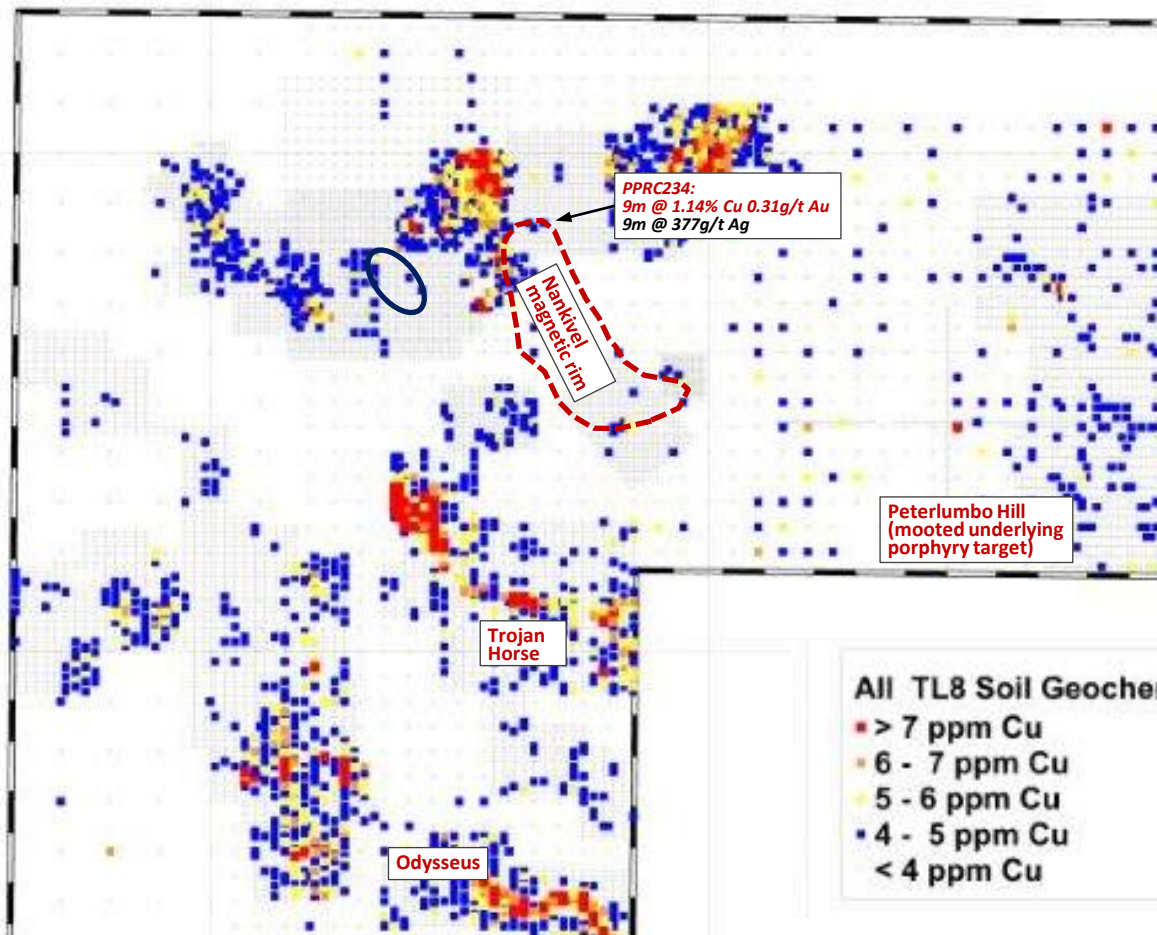
Structural & intrusive patterns recognised for both silver-lead & copper-gold targets

5km

**\*Note scale**



## Copper-in-soil anomaly plan



### New drilling reveals:-

- 2) New magnetic copper-gold targets

Nankivel granodiorite rim\*

Trojan Horse (drill-ready)

Odysseus\*

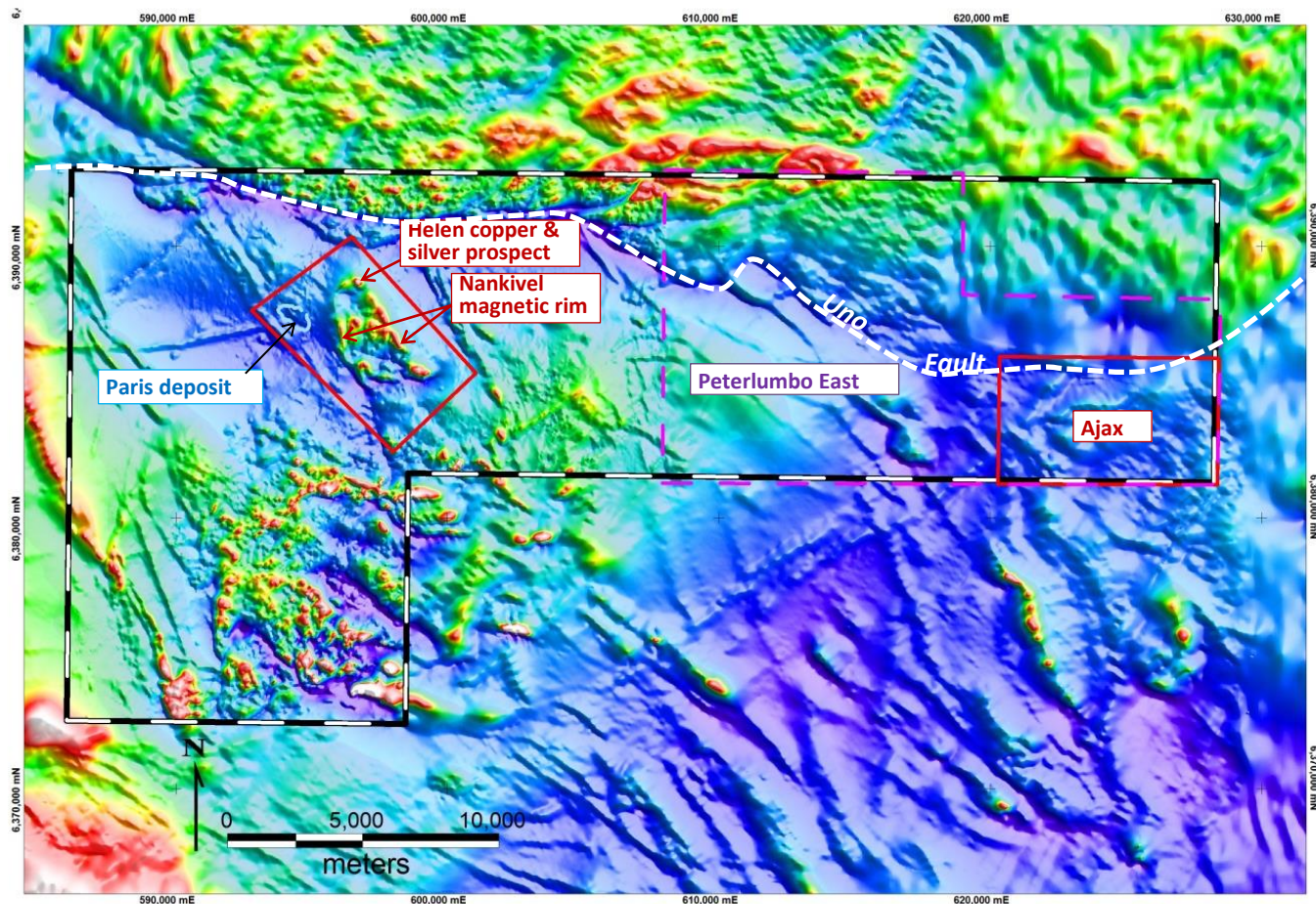
- Needs heritage survey & infill soil sampling



# Targeting the new opportunities



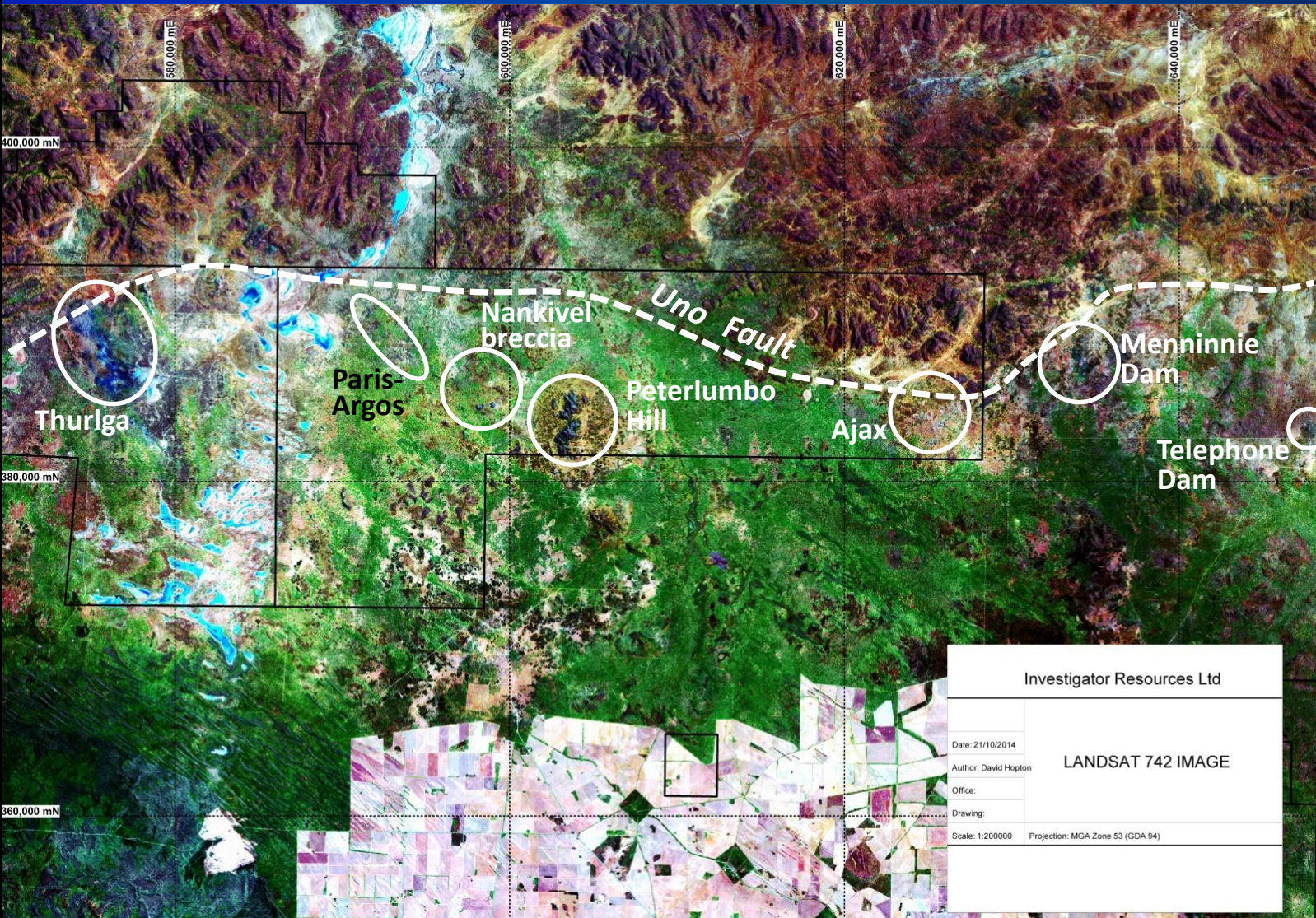
Areas of recently completed airborne magnetic surveys – data awaited



5km



# Landsat satellite spectral anomalies – highlights Thurlga farm-in taking prospective length along Uno Fault to 70km



**5km**



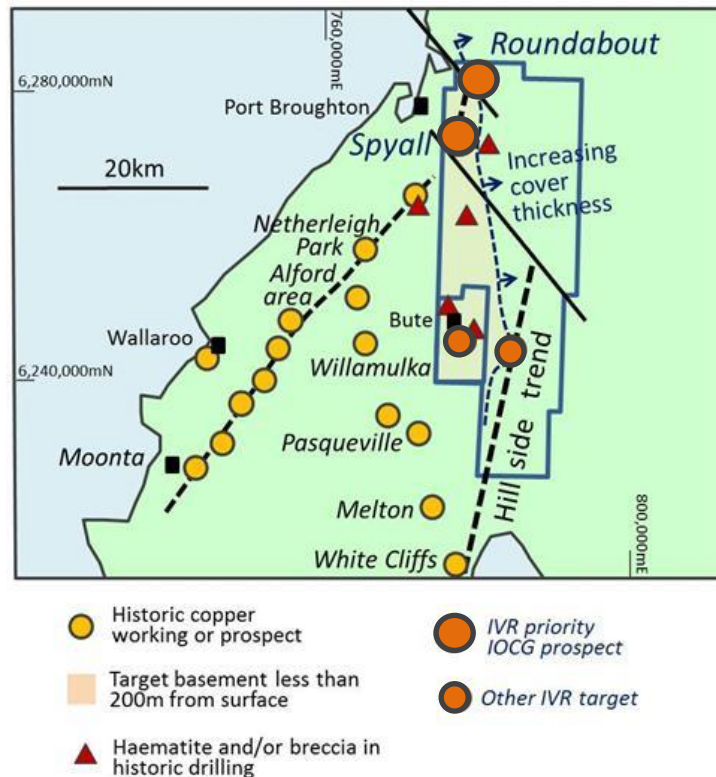
# IOCG targets on Yorke Peninsula



## Shallow IOCG modelled targets under wheat fields at best regional position

Nearest past drilling 4km away;

Diamond drilling of average 200m depth planned to test Roundabout & Spyall in early 2014.  
Access agreement achieved for Spyall and pending for Roundabout.



## Geophysical targets

### Roundabout

Gravity depth 125m below surface

Magnetic depth 200m

### Spyall

Gravity depth 50m

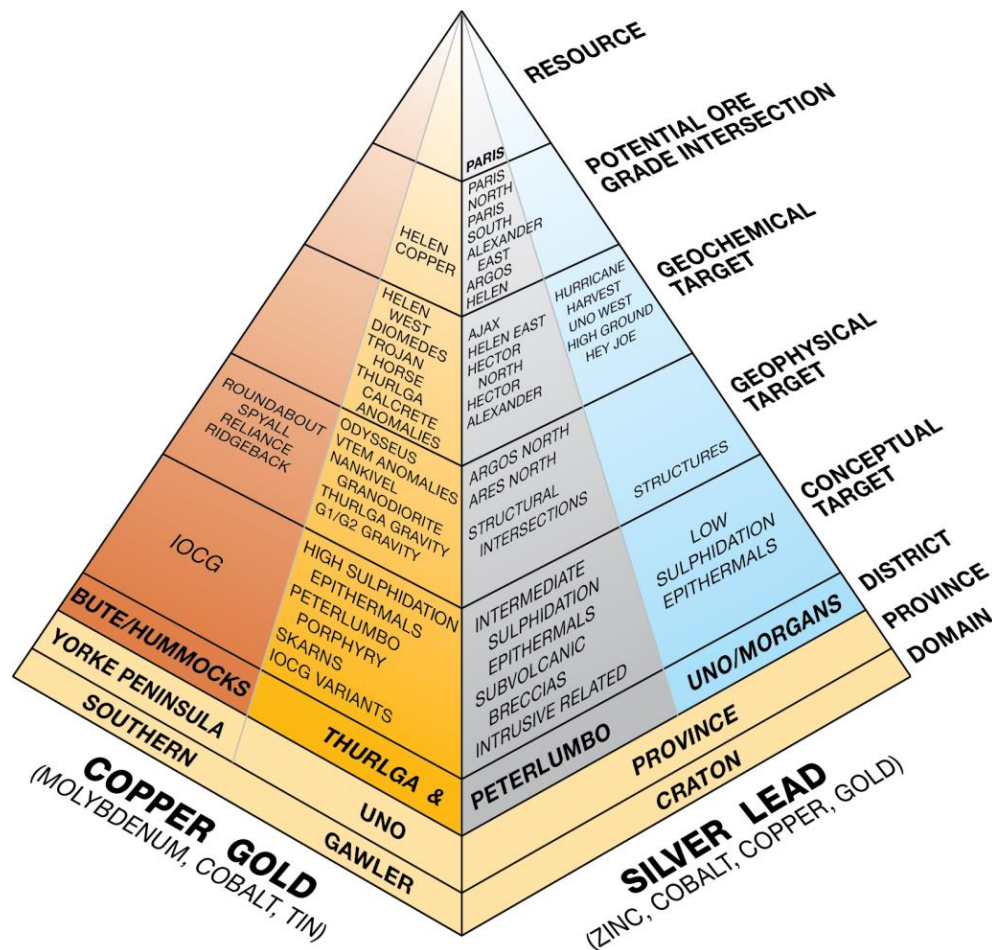
Magnetic depth 50m



# On-going Silver & Copper Exploration Program



## Project Pyramid



## Balance 2014

**Airborne magnetics** – Thurlga, Peterlumbo East (Ajax), Helen-Nankivel

**Soil sampling** – Thurlga, Nankivel, Argos/Ares North

**Electrical geophysics?** – Argos/Ares North, Diomedes

**Drilling** – Paris North, Peterlumbo porphyry, Trojan Horse, Diomedes, Ajax

## Early 2015

**Heritage surveys** – Nankivel, Odysseus, Argos/Ares North

**Drilling** – Helen-Nankivel, Argos/Ares North, Roundabout, Spyall, Hurricane