



Real Energy Corporation Limited
Level 3, 32 Walker Street North Sydney NSW 2060
Telephone 02 9955 4008

REAL ENERGY WEEKLY REPORT

Sydney, 30 October 2014: Cooper Basin focused oil & gas exploration company Real Energy Corporation Limited (ASX:RLE) ("Real Energy") is pleased to provide weekly drilling report of Queenscliff-1 well in the Queensland Cooper-Eromanga Basin ATP 927P as following:

Since the last report the well was drilled from 2,793 metres to 3,028 metres without any incident. Current operation as at 7.00 am AEDT today was drilling ahead in 8-1/2" hole at depth of 3,028 metres within the Permian Toolachee Formation target section. The revised planned total depth is 3,200 metres.

Based on the preliminary information from drill cuttings and mud log gas readings, the Toolachee Formation was encountered at around 2,998 metres. Some gas peaks have been recorded in sandstones of the Paning Member of the Early Triassic Nappamerri Formation and continuous elevated gas readings have been recorded over the Toolachee Formation penetrated so far with several gas peaks. The currently available intervals with notably high gas readings are:

Nappamerri Formation:

2,955-2,956.5 metres: sandstone, very fine to medium, sub-angular to sub-rounded, poor to moderate sorted, trace mica flakes and carbonaceous specks, moderate to abundant clay matrix, moderate to strong silica cement, moderately hard, poor porosity with gas peak of 50 units over the background gas of 5 units

2,971-2,973 metres: with gas peak of 90 units over the background gas of 10 units and 2,981-2,983 metres: with gas peak of 308 units over the background gas of 25 units. Both intervals contain sandstone, very fine to medium, angular to sub-rounded, poor to moderate sorted, carbonaceous material, lithic, feldspathic, minor mica flakes, silty carbonaceous argillaceous matrix, moderate to strong silica cement, moderately hard, predominantly poor with minor fair to good porosity.

Further information on the gas shows in the Toolachee and Patchawarra formations will be released once they became available.

The significance of these gas shows and any further gas shows in the Permian Toolachee and Patchawarra formations will be further evaluated by electric logs to be undertaken after reaching the revised total depth at approximately 3,200 metres.

Managing Director of Real Energy Mr Scott Brown commented "While we are still drilling and later running wireline logs for evaluating the significance of the gas seen in the well, Queenscliff-1 results so far appear to be very encouraging."

Queenscliff-1 is located 12.85km west of Tamarama-1 and 17km east-northeast of the Whanto-1 gas field. Real Energy's acreage is prospective for basin centred gas (BCG), conventional oil and shale oil and gas. Queenscliff-1 will test the presence gas saturated Permian Toolachee and Patchawarra formations in an area located significantly downdip from the successful Tamarama-1 well and would advance Real Energy's theory on the presence of BCG within ATP927P. An Independent Geologist's report prepared for Real Energy (which was including in Real Energy's prospectus) estimated that the Permian section in ATP927P and ATP917P contains a mean gross estimated petroleum initially-in-place of 10.2 TCF of gas.

For further information please contact:

Real Energy: Managing Director - Scott Brown +61 2 9955 4008.

Released through: Sam Wallman, Six Degrees Investor Relations, +61 2 9230 0661

Or visit the website: www.realenergy.com.au

Geological Information

The geological information in this announcement relating to geological information and resources is based on information compiled by Mr Lan Nguyen, who is a Member of Petroleum Exploration Society of Australia, the American Association of Petroleum Geologist, and the Society of the Petroleum Engineers and has sufficient experience to qualify as a Competent Person. Mr Nguyen consents to the inclusion of the matters based on his information in the form and context in which they appear. The information related to the results of drilled petroleum wells has been sourced from the publicly available well completion reports.



Figure 1 – Photo of Ensign rig at Tamarama 1

About Real Energy Corporation

Real Energy is an oil and gas exploration and development company with a focus on the Cooper Basin, Australia's most prolific onshore producing petroleum basin. Real Energy has 100% ownership in 3 large permits in Queensland – ATP 917P, ATP 927P and ATP 1161PA. These permits cover 8,314 km² (2,054,435 acres).

Real Energy is focusing initially on the Toolachee and Patchawarra formations. These formations are well-known throughout the basin for holding and producing gas. Seismic interpretation in conjunction with existing petroleum well data has determined that the Toolachee and Patchawarra formations are significant across much of our acreage. Third-party geological analysis has assessed Real Energy's areas to contain a mean gross estimated petroleum initially-in-place of 10.2 Tcf of gas in the Toolachee and Patchawarra formations.

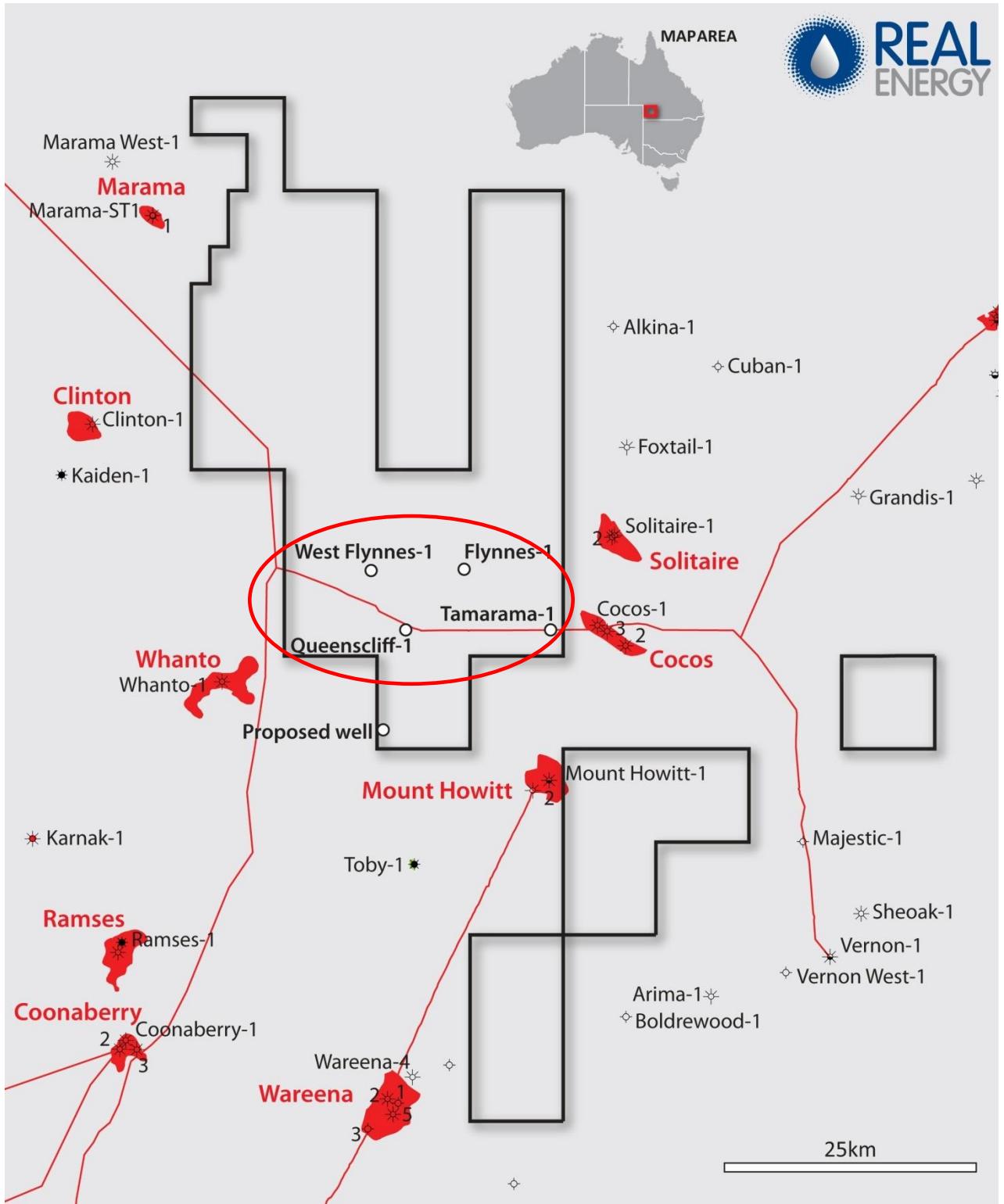


Figure 2 – Location of wells and ATP927P Permit

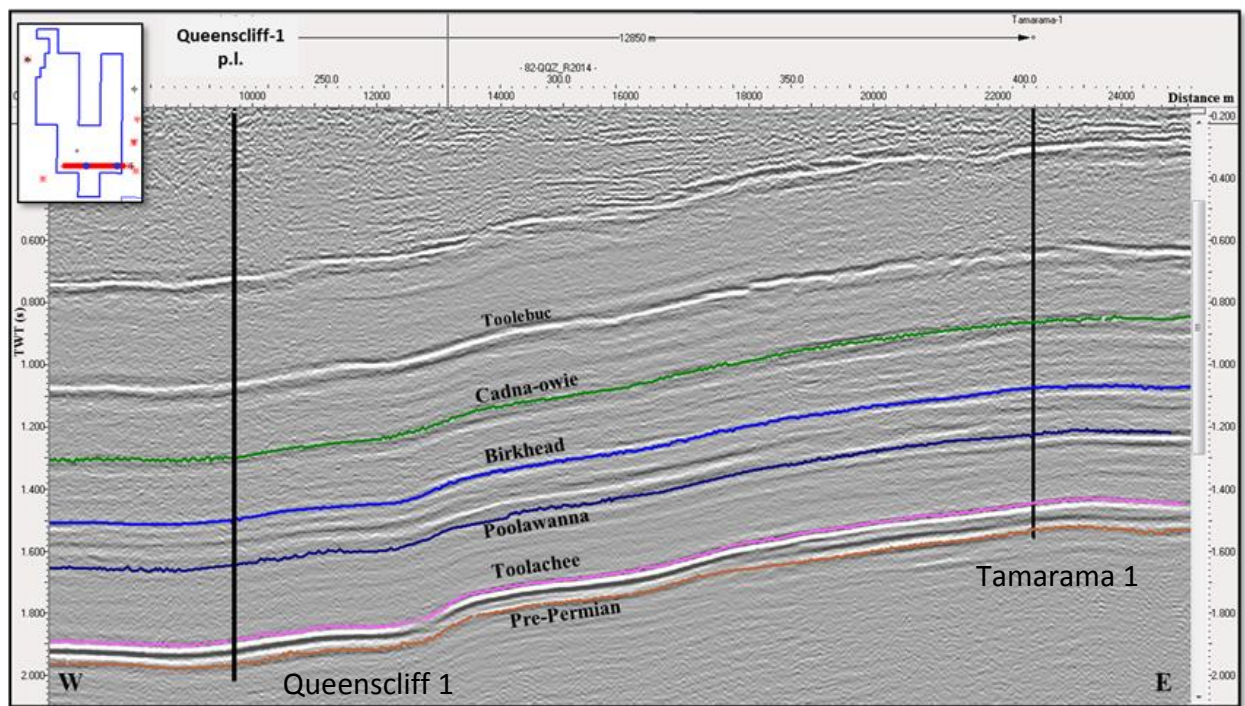


Figure 3 – Seismic Section with Proposed Tamarama-1 and Queenscliff-1 Locations