



DRUMMOND
DRUMMOND GOLD LIMITED

ABN 96 124 562 849

Gold Focused Explorer
with
Gold Resources and Advanced Prospects

Mining 2014

Important Information

Forward Looking Statements

This presentation contains certain "Forward-Looking Statements" regarding future events and the future financial performance of DGO. All statements, other than statements of historical fact, included herein, including without limitation statements regarding forecast cash flows and potential mineralisation resources and reserves, exploration results and future expansion plans and development objectives of Drummond Gold Limited are forward-looking statements that involve various risks and uncertainties many of which are outside the control of DGO. Any forward looking statements included in this presentation involve subjective judgement and analysis. There can be no assurance that such statements will prove to be accurate and actual results and future events could differ materially from those anticipated in such statements.

Except as required by law, no representation or warranty, express or implied, is made as to the fairness, accuracy, completeness, reliability or correctness of the information, opinions and conclusions, or as to the reasonableness of any assumption contained in this presentation. To the extent permitted by law, you release Drummond Gold Limited (DGO) and its officers, employees and agents from any liability without limitation arising as a result of the reliance by you or any other person on anything contained in or omitted from this presentation.

The distribution of this presentation or information contained in it in jurisdictions outside Australia may be restricted by law and you should observe any such restrictions. The information contained in this presentation does not constitute investment, legal, accounting, regulatory, taxation or other advice and it does not take into account your investment objectives or personal situation or needs. You are solely responsible for seeking independent professional advice in relation to this presentation and any action taken on the basis of the information contained in it. No responsibility or liability is accepted by DGO or its officers, employees or agents for the information contained in this presentation or any action you take on the basis of this presentation.



Company Snapshot - Brisbane Based

Founded:	February 2006, Brisbane, Mt Coolon Gold Mines Pty Ltd
Publicly Listed:	21 st December 2007, Brisbane ASX
Parent Company:	Drummond Gold Limited
Head Office:	Unit 3, 636 Progress Rd, Wacol, Qld. 4076
Field Office:	Mill St, Mt Coolon, Qld.
Accountants:	Deloitte, Brisbane
Lawyers:	McCullough Robertson, Brisbane
Tenure Admin:	Hetherington (HEMTS), Brisbane
Resources:	H & S Consultants, Brisbane



Company Snapshot – Exploration & Mining Driven

Company:

Top 20 Shareholders	81.55%
Major Shareholder	44.8% - Merrill Lynch (Aust.) Nominees
Directors relevant interest	13.08%
Shares on issue	459,021,975
No. of shareholders	608
Share Price	\$0.002
Market Capitalisation	\$0.98M
Listing Code ASX	DGO

Board:

Eduard Eshuys, Executive Chairman – Geologist, 45 years experience
Ross Hutton, Non-executive - Mining Engineer, 40 years experience
Brice Mutton, Non-executive – Geologist, 35 years experience
Michael Ilett, CFO/Company Sec. – Accountant, 25 years experience.



Key Assets – Drummond Basin, Queensland

Location:

- Drummond Basin, Central Queensland – centred on Mount Coolon.
A proven gold producing province – but underexplored.

Assets:

- ✓ **Current Resources totaling 283,000 ounces of gold *.**
- ✓ **Includes two former Gold Mines – Mt Coolon (Koala) & Glen Eva.**
- ✓ **Eugenia Prospect – an oxide resource of 173,000oz Au.**
- ✓ **Numerous other anomalous prospects surround the mines & resources - a pipeline of projects & opportunities.**

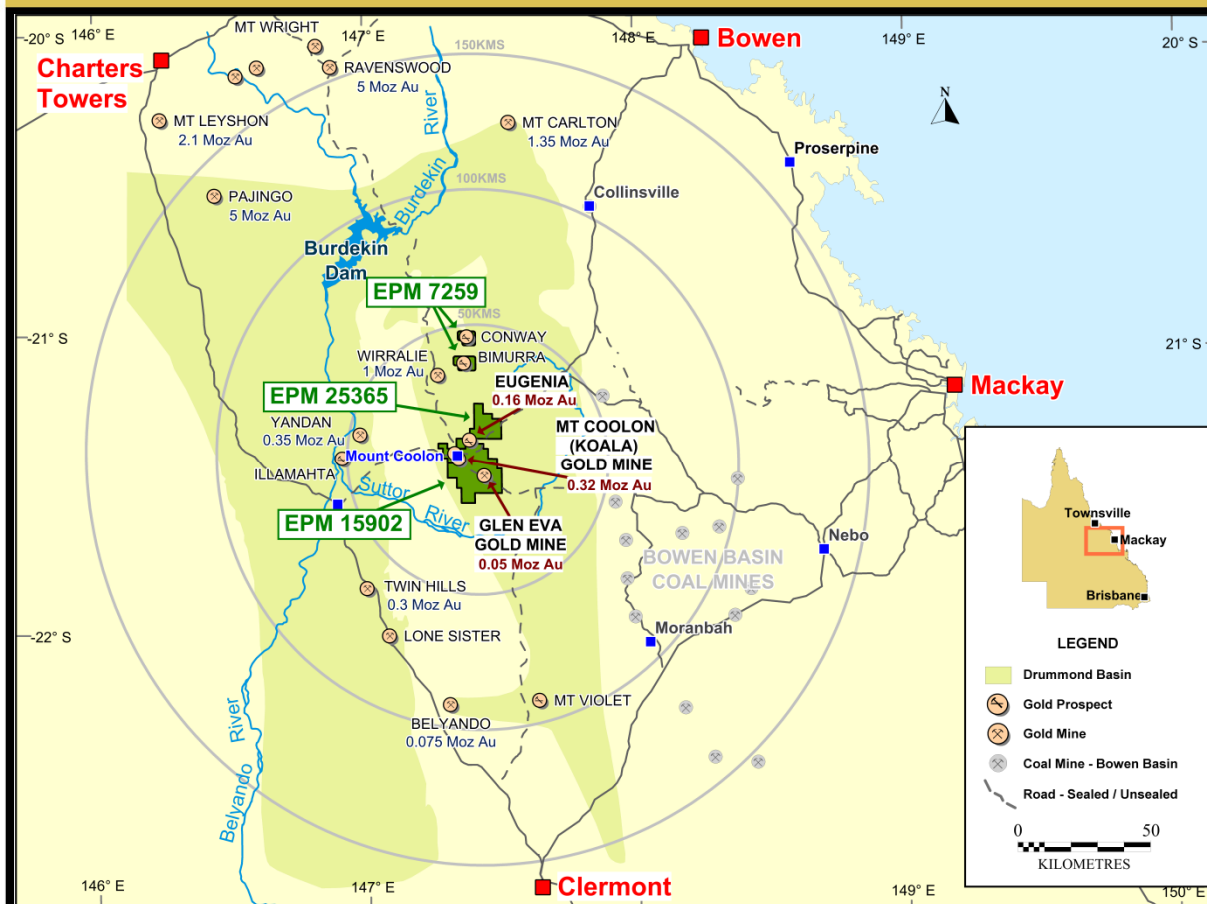
Opportunity:

- ❖ High potential for multi-million ounce resource extension along strike and at depth: Mt Coolon Gold Mine & Glen Eva Gold Mine.
- ❖ Eugenia Prospect: underexplored, potential extensions & satellite targets.
- ❖ Numerous nearby prospects - all with anomalous gold drill intersections.
- ❖ Includes Intrusion-related gold & copper-gold skarn prospects.

* Resources Table at back of Presentation



Drummond Gold – Holds Key Tenure

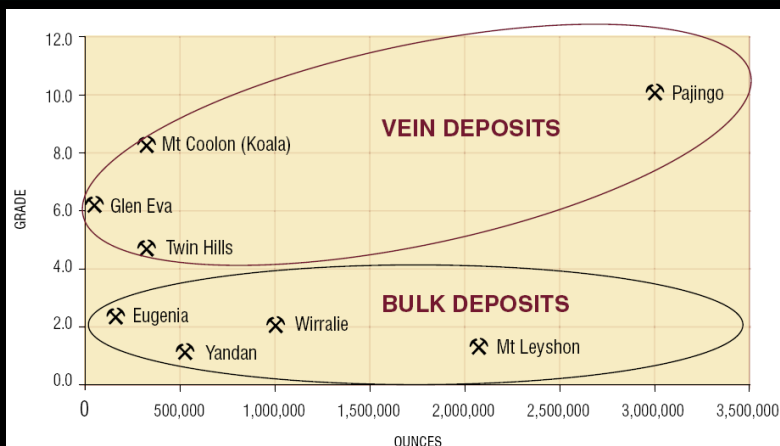


Drummond Basin (green) & Drummond Gold Tenements (dark green)

- Large contiguous holding – EPM 15902 of 3,000km² centred on Mt Coolon Town, 200km west of Mackay.
- Includes the advanced tenure EPM 7259 Bimurra - located 35kms north of Mt Coolon.
- EPM 15902 and EPM 7259 lie on the eastern Drummond Basin side – a prolific gold endowed belt.
- EPM 15902 fully envelopes the company's Mt Coolon (Koala) and Glen Eva Gold Mines & Mining Leases.
- Close to infrastructure – power, services, airstrip, road access, eastern seaboard.



Drummond Basin – Proven but Under Explored Gold Province



Examples of Major Drummond Basin Deposits

Deposit	Styles	M t	g/t Au	M oz
Glen Eva	Epithermal Vein	0.25	6.2	0.05
Eugenia	Epithermal Bulk	2.13	2.3	0.16
Mt Coolon (Koala)	Epithermal Vein	1.18	8.3	0.32
Twin Hills	Epithermal Vein	2.18	4.7	0.33
Yandan	Epithermal Bulk	15.05	1.1	0.53
Wirralie	Epithermal Bulk	15.30	2.0	1.00
Mt Leyshon	IRG gold Bulk	47.00	1.4	2.07
Pajingo	Epithermal Vein	9.27	10.1	3.00
Total		92.36	2.5	7.46

Tonnes and grade are total production plus remaining resources

- Endowment >7M oz gold.
- Epithermal and Intrusion-related Gold (& Base Metal) Province.
- Limited modern exploration – 10 years of concerted effort 1985-1996 (arising from Pajingo (Scott Lode) discovery 1983).
- Mainly oxide production and historical alluvial placers.
- Pajingo now 5M oz Au, mined since 1983 to present.
- All deposits → resources grow as mining progresses.



Exploration Success & Mining Pedigree

Mining Profits in the region made two Mining Companies

- ✓ 1931-1939 Mt Coolon (Koala) Mine

Gold Mines of Australia NL formed and consolidated the prospectors field. Mined **Mt Coolon Mine** – bonanza grade (18.4g/t Au) underground mine.

Queensland largest gold producer in 1932.

Profits from mine laid the foundations for the formation of **Western Mining Corporation (WMC)** by the same principals.

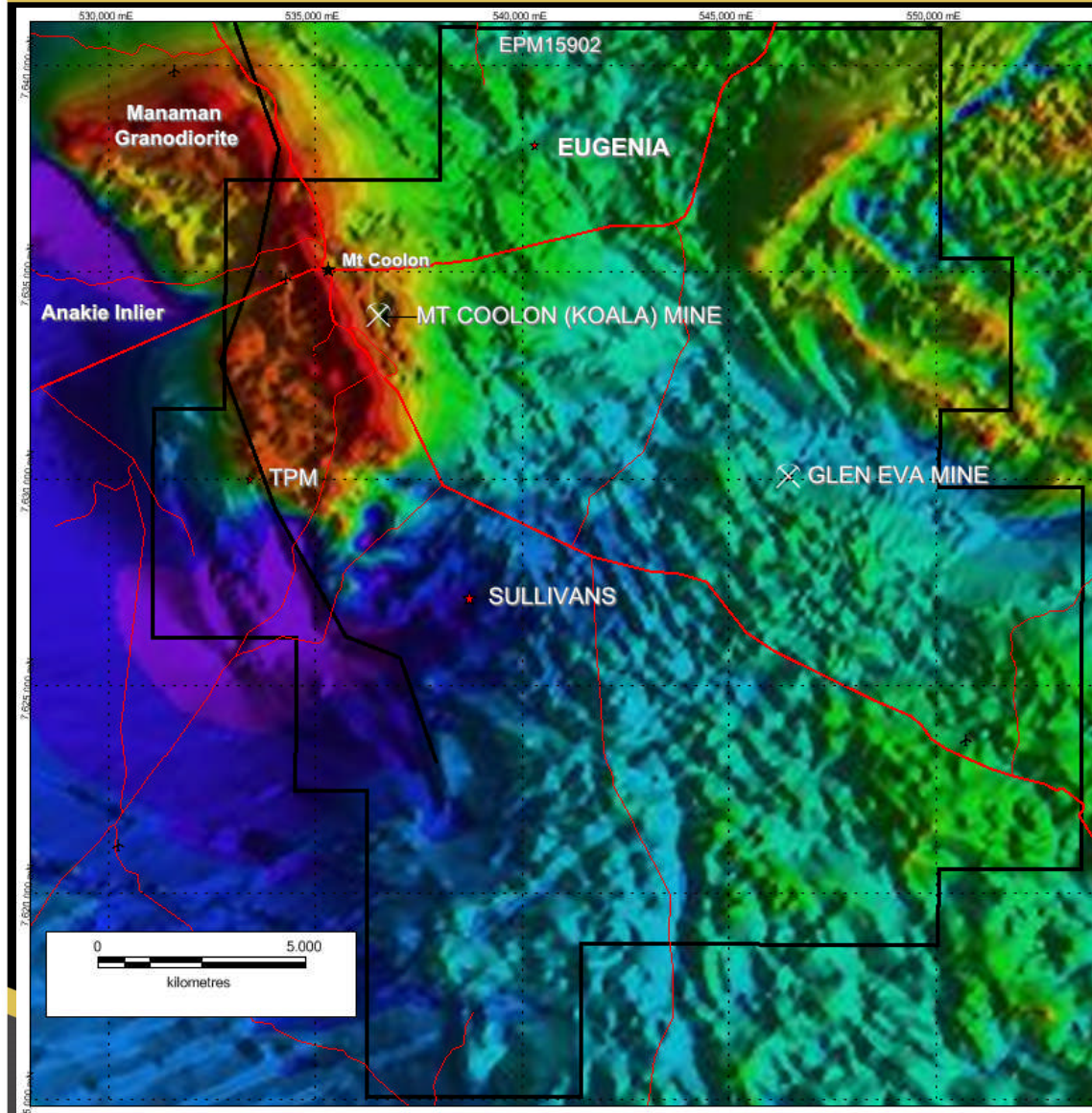
- ✓ 1992-1997 Mt Coolon Region

Ross Mining NL formed and consolidated the basin. Purchased discoveries from others in the late 1980's/early 1990's.

Ross successfully mined **Belyando, Yandan** open pits. Also mined other oxide resources by open pit at **Wirralie, Mt Coolon (Koala) & Glen Eva.**



Key Assets – a concentrated portfolio



- A large porphyry/epithermal province with proven genetics
- Defined contact Drummond Basin volcanic units (green/right-side) with the Anakie Metamorphics (blue/left side) & .
- Manaman Granodiorite intrusive (red, elongate & centre of image).
- Mines and key prospects located in a 10km radius enveloped by one tenure EPM 15902

Mount Coolon (Koala) Mine – a historical producer



Mount Coolon Mine & Plant 1932

Photo QGMJ 1935

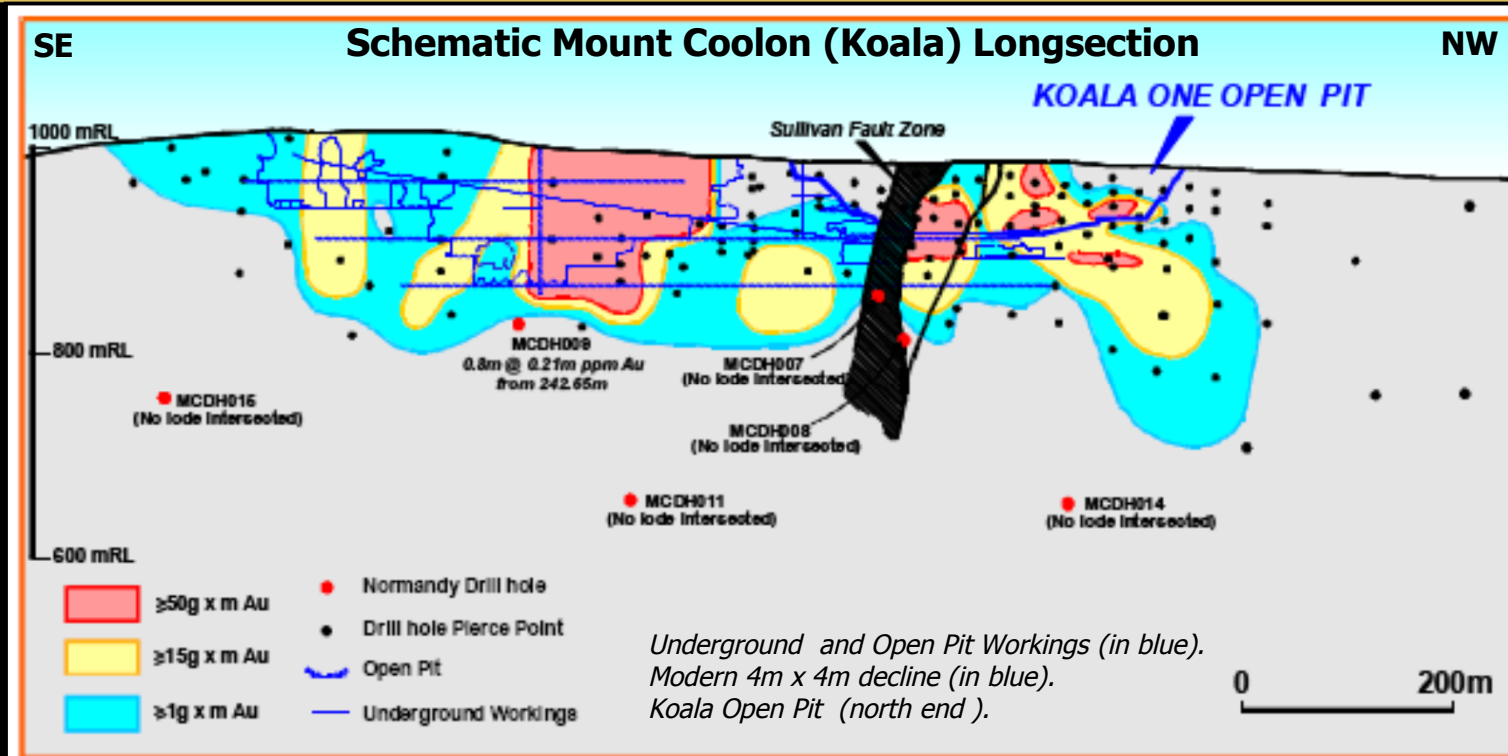
- Gold discovered in 1913 and deposit continuously mined for 25 years until 1939.
- GMA produced 180,000oz at 18.4 g/t gold from 1930-1939.
- Queensland largest gold producer in 1932.
- 1986/87 feasibility study including drilling and a 675m long 4m X 4m decline completed by Renison Goldfields, but no production.
- Ross Mining NL mined Koala Open Pit in 1996 for 53,000oz @ 5.6g/t gold.



Koala Open Pit – view looking northwest



Mount Coolon (Koala) Mine – high grade potential



- Classic epithermal “bonanza grade” deposit. Mined grades ranged from 12-35g/t Au.
- Main lode crops out over 1,300m. Lode dips steeply east and west.
- Not tested sufficiently along strike or at depth or associated structures.
- **Current Resource 67,200 ounces Au**

Mount Coolon (Koala) Mine – deep drilling required



Crustiform chalcedonic –silica, adularia, chlorite

Mt. Coolon
Drill core



Banded crustiform chalcedonic – silica, adularia, chlorite

- ✓ Lodes occur in andesitic volcanics and display typical low sulphidation adularia-sericite style.
- ✓ Structural work clearly shows a strong left lateral transpression.
- ✓ Geochemical niche sampling has highlighted a well developed vertical zonation.
- ✓ Strong vertical and potential lateral variations are observed in silica textures and vein mineralogy.
- ✓ Interpretation of detailed magnetics and IP has identified magnetic depletion zones coincident with chargeability/resistivity zones along strike & on sub-parallel & linking structures.
- ✓ Local regional evidence supports a structural regime of telescoping & overprinting allowing potential for significant depth extensions.
- ✓ Strong similarities to +4Moz Pajingo & Cracow Gold Mines, Qld.

Targets have been identified , mainly requiring deep drilling and under cover.

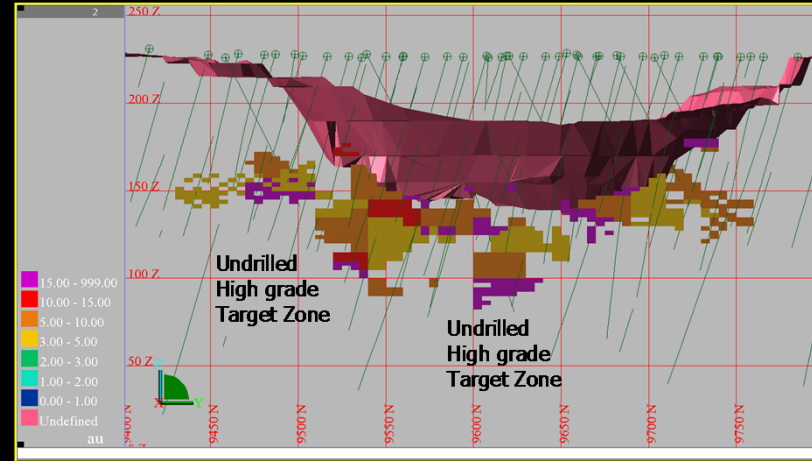


DRUMMOND
DRUMMOND GOLD LIMITED

Glen Eva Mine – open at depth and long strike



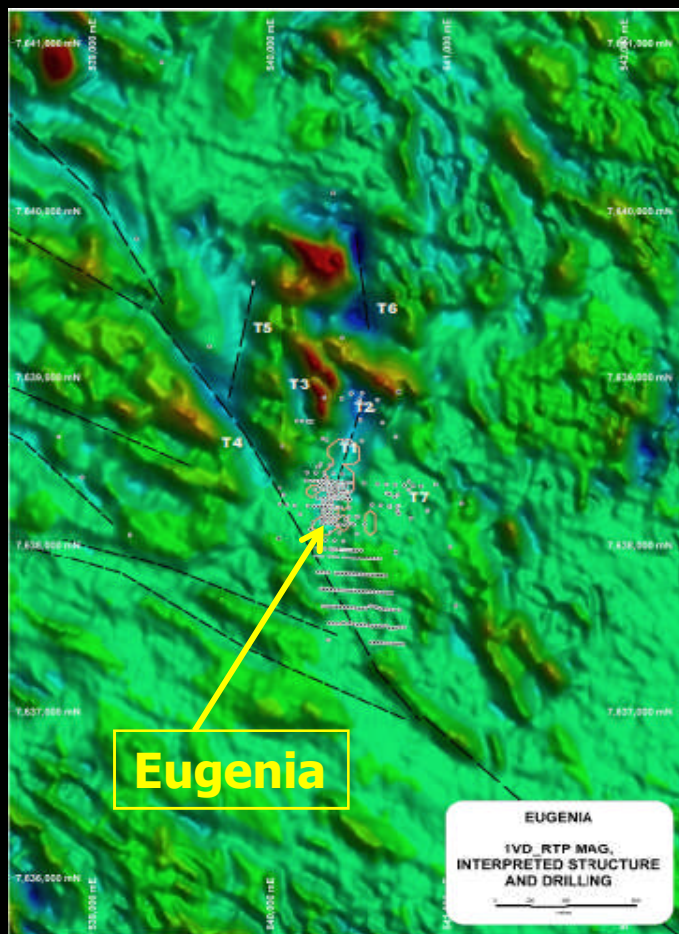
Glen Eva Pit – looking southwest



Glen Eva Deposit – longsection looking southwest

- **Current resource is 37,200 ounces Au.**
- Discovered 1992, located 9km SE Mount Coolon (Koala) mine and connected by private internal all-weather haul road.
- Blind deposit but sinter outcrop nearby led to 1992 discovery.
- High grade “bonanza” epithermal vein.
- **Open pit mined for 25,000 oz >6.0g/t in 1997 – abandoned due to pit failure.**
- Open at depth and along strike. Nearby structures anomalous.
- Virtually no exploration away from the open pit.

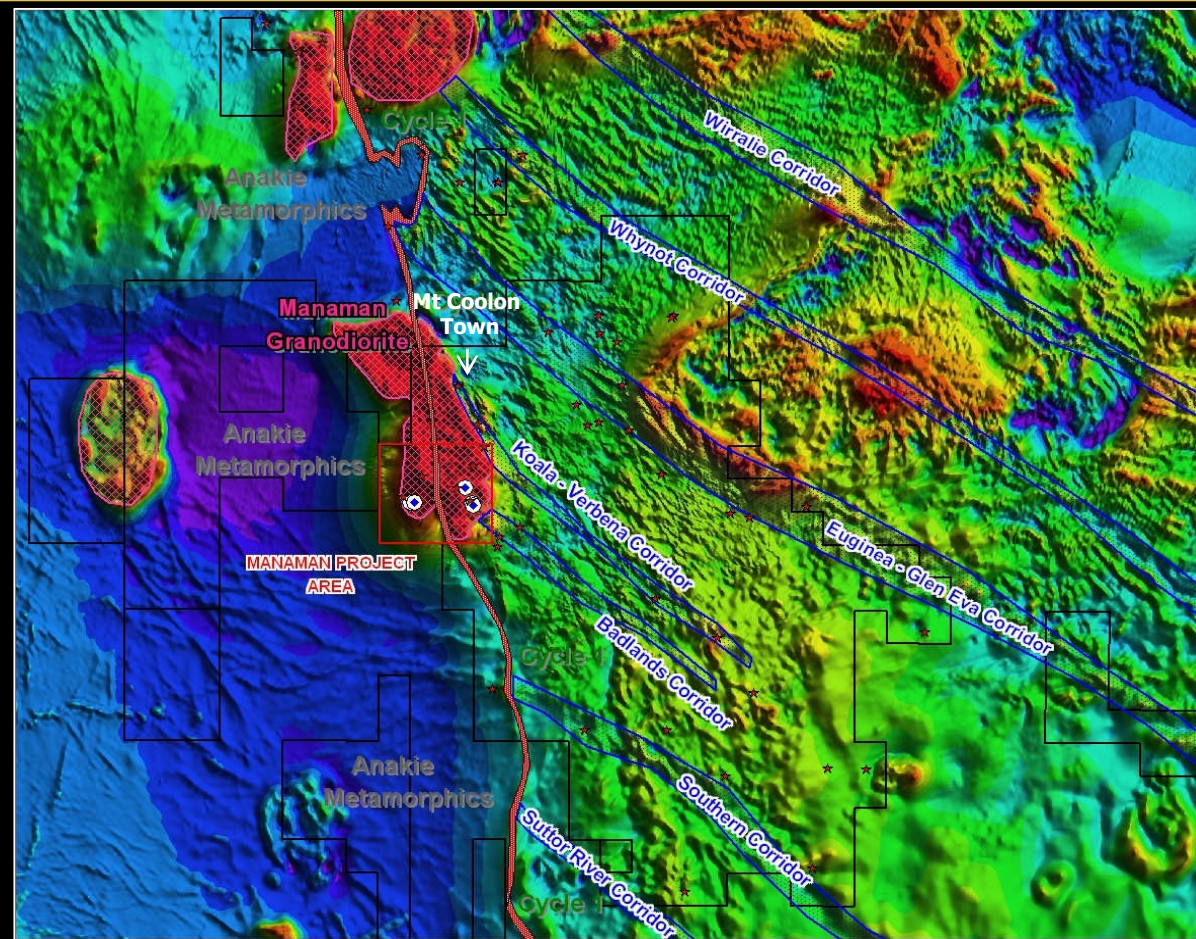
Eugenia Project – more drilling required



1st VD Aeromagnetics – resource area defined by white dots centre of image

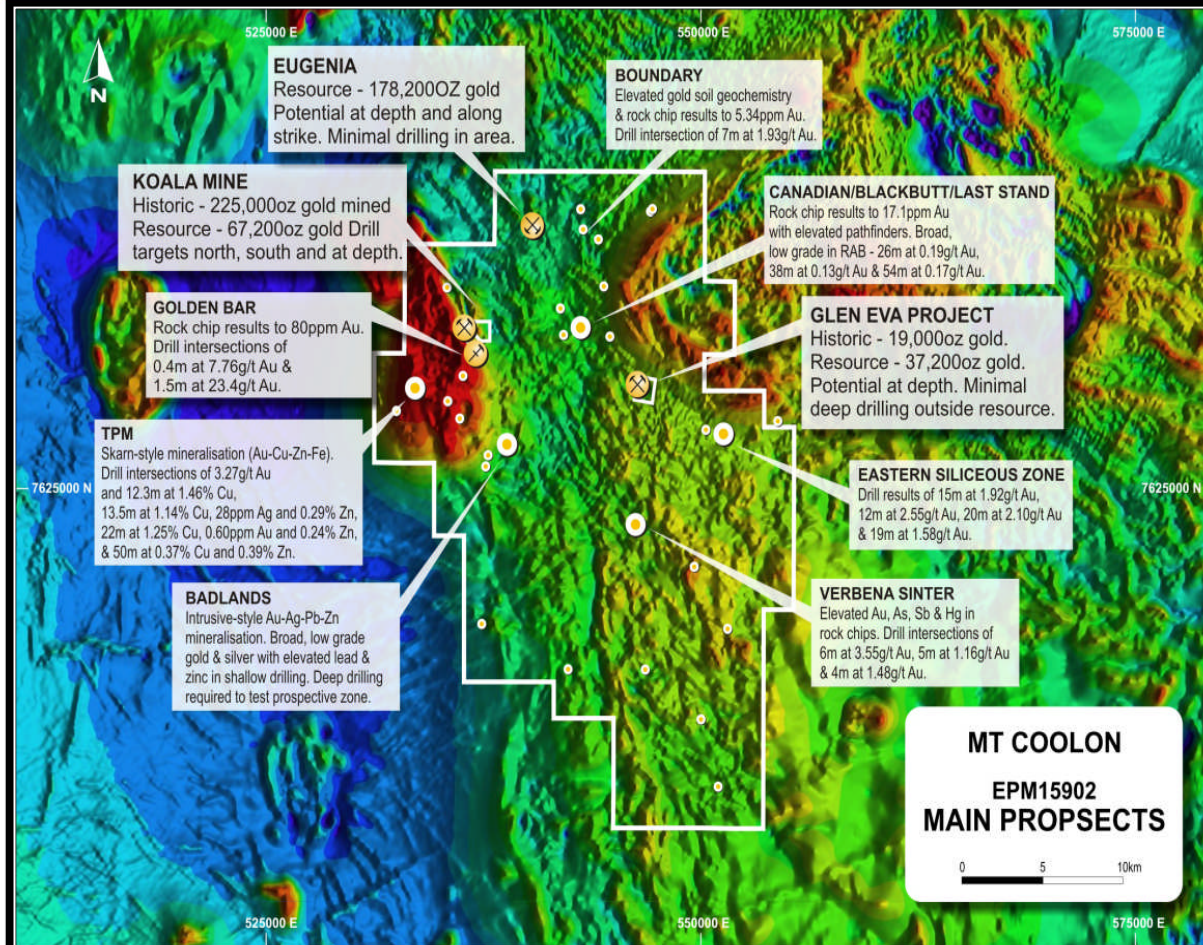
- **Current Inferred Resource of 4.4Mt @ 1.3g/t Au for 178,000 oz.**
- Located 6kms northeast of Mt Coolon - Drummond Gold's largest resource.
- Previously named Police Creek. Deposit incompletely drilled, passes under shallow cover north, south and west, open at depth.
- Initial (Whittle) pit optimisation completed, provides focus to further exploration, delineation & resource extension.
- One deeper intersection approx. 140m below surface yielded 16m @ 2.2 g/t Au including 2m @ 19.4 g/t Au suggestive of possible feeder structures.
- New work has defined potential repeat structural targets. Drill plan prepared over new targets.

Mt Coolon Region – Gold Anomalism Throughout



- Strong NW - SE trending structural corridors in volcanics.
- **All identified major structures have known gold anomalism.**
- Detailed Helimag only acquired in 1997 – post the intense first phase exploration which was geochemically focused.
- Target definition within corridors by geophysics (with widespread masking cover units – Sutor Formation) yet to be undertaken.

EPM 15902 Mt Coolon – plethora of prospects



- Over 20 known prospects despite minimal/ineffective exploration in areas of extensive younger masking cover units

- Significant opportunities for modern exploration approaches applying epithermal geology understanding.

- Ripe for systematic air core fences over mag. interpreted dilation and depletion zones – for potential near surface oxide deposits.

1st VD Aeromagnetics



DRUMMOND
DRUMMOND GOLD LIMITED

Nearby Developing Prospects

Strong gold anomalism from past RC/RAB drilling includes....

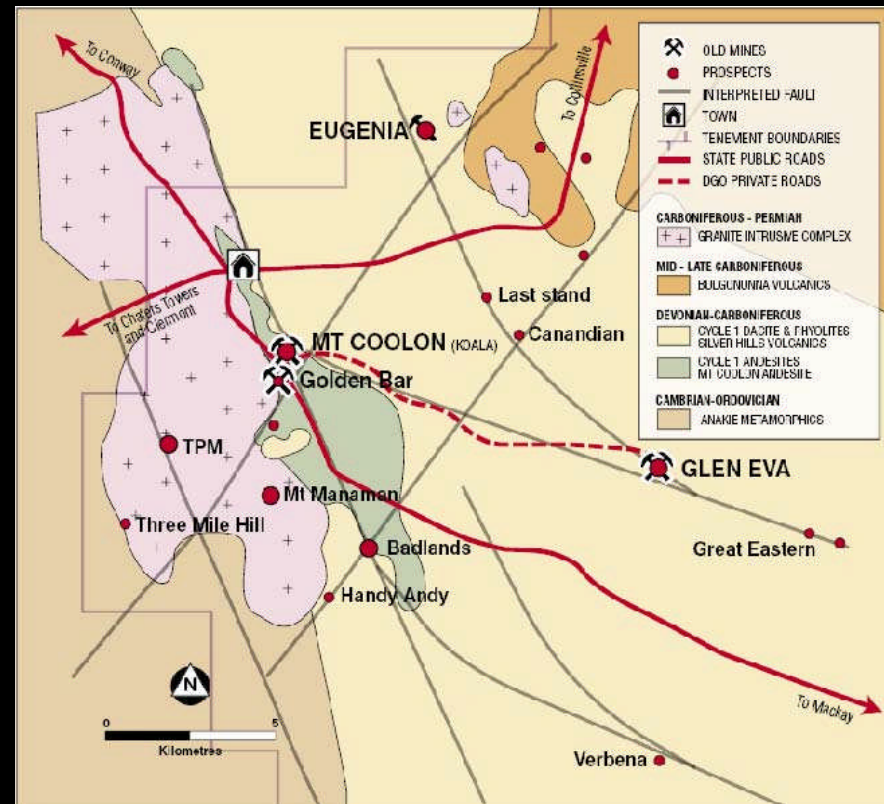
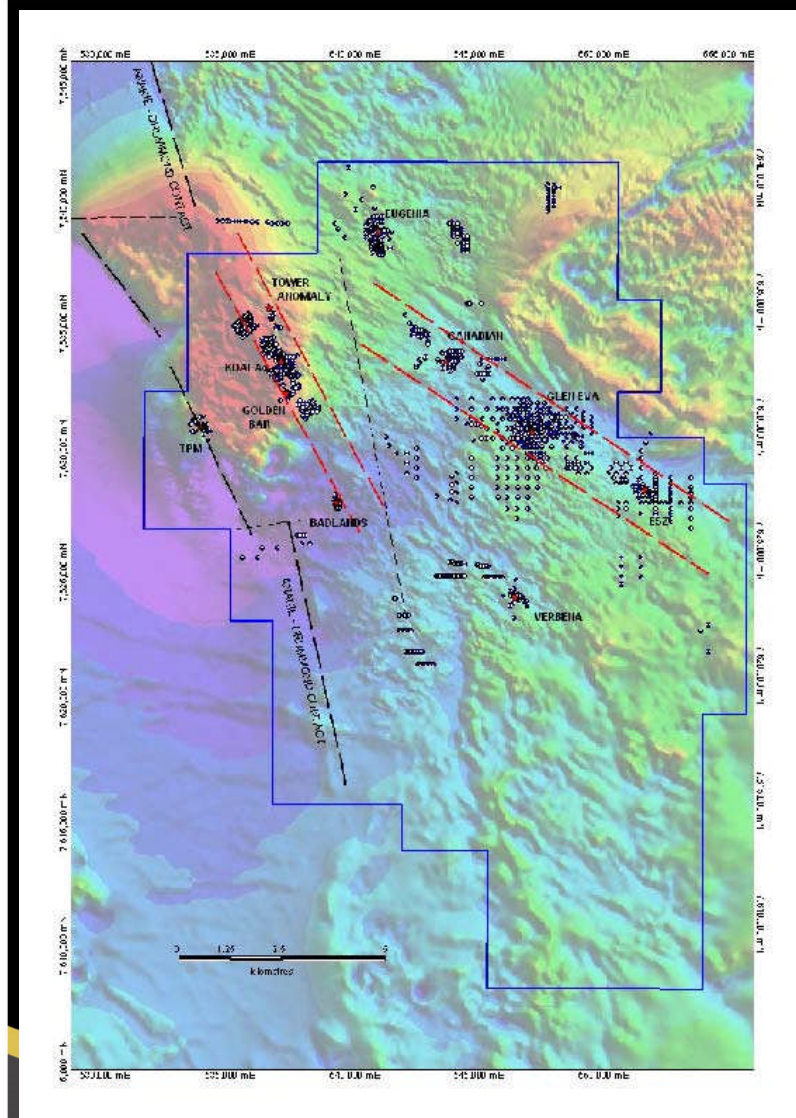
- Great Eastern (ESZ) Prospects,
- Canadian/Blackbutt/Last Stand Prospects,
- Verbena Sinter Prospect (a giant sub-aerial sinter 600m across),
- Plus over 20 other anomalous prospects identified,
..... all only 1st or 2nd pass tested (1986-1996).

Base Metal Opportunities (Manaman Intrusive)

- TPM Copper-Magnetite Skarn Prospect , 6km SW of Mt Coolon,
- numerous near surface drill intersections of ~ 1% Cu ranging
from 15m to 30m in thickness, open down dip & along strike.



Structural Corridors are under-explored



❖ Known deposits & prospects linked along structural corridors.



DRUMMOND
DRUMMOND GOLD LIMITED

Bimurra & Conway (EPM 7259) – Legacy prospects

- Purchased from Newcrest. Covers two (2) separate epithermal systems - **Conway** and **Bimurra** – located ~35km north of Mt Coolon (within acceptable trucking distance). Both lie in a NE structural corridor 15km & 25km northeast of Wirralie Mine (1moz Au).
- Each system has numerous prospects over a large sq. km area. Sinters prominent.
- **Conway System** - Drilling has returned significant results at several large prospects including:
 - Bluegum - 20m at 3.97g/t Au, 6m at 2.11g/t Au,
 - Wobegong - 2m at 18.4g/t Au, 2m at 13.3g/t Au,
 - Red Flag Hill - 2m at 14.4g/t Au, 6m at 4.13g/t Au.

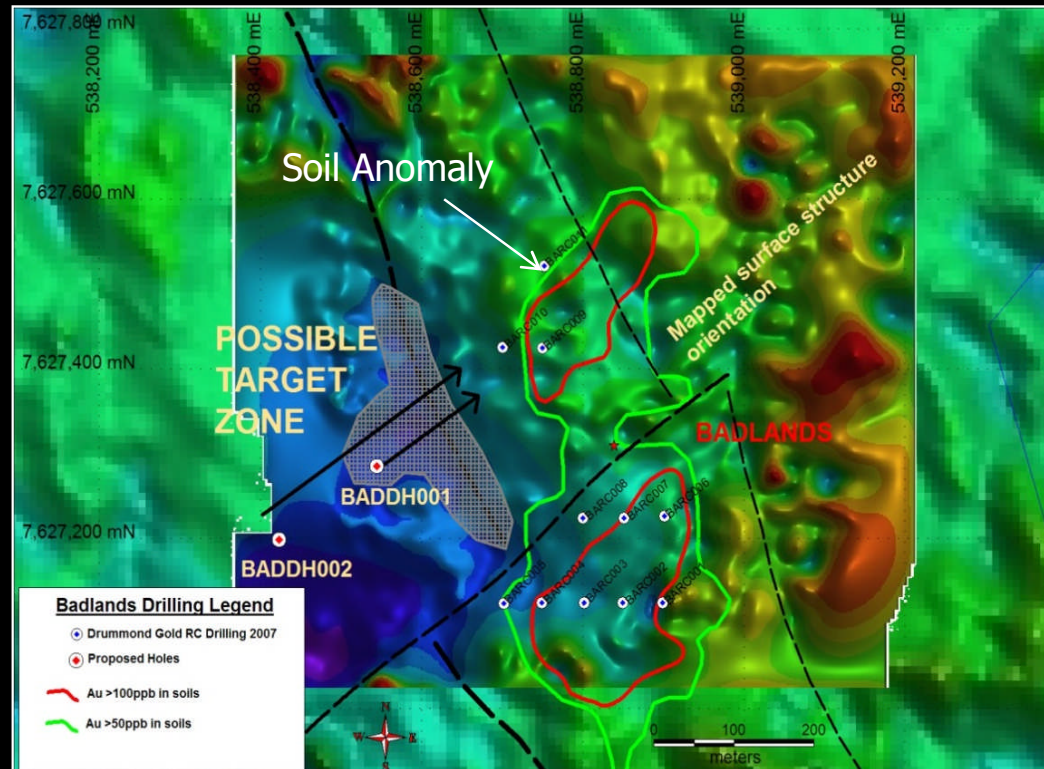
Drummond completed a major IP survey over a majority of the Conway system - nineteen (19) resistivity/chargeability target areas identified - drilling on IP targets yet to be undertaken.

- **Bimurra System** – Centre of system formerly covered by MDL 22 –

System now under one ownership. Requires 3D evaluation followed by drilling over the entire epithermal system.



Sullivans Prospect – emerging IRGS gold prospect



1st VD ground magnetics

- Located 6km south of Mt Coolon and close to existing deposits (formerly named Badlands).
- Defined as an high order > 100ppb, and often >1.0ppm gold soil anomaly 650m by 250m.
- Successful drilling by Drummond interpreted as exposed level "relatively high" in a typical Intrusion-related Gold System (IRGS) Deposit.
- Similarities with Mt Wright and Mt Leyshon IRGS gold deposit settings.
- **Target size 2 to 3 million ounces Au.**
- Requires targeted deep drilling

Exploration & Mining Opportunity Gap – Mt Coolon

All Resources Are Open

- Ross Mining's focus was on quick open pit ounces - amidst rapidly declining World Gold Prices in the mid 1990's.
- Mt Coolon (Koala) Deposit lookalikes at Cracow & Pajingo underground mines → discovered post Ross Minings exit (1997) of the Drummond Basin.
- Mt Coolon (Koala) and Glen Eva Mines have not been tested appropriately along strike and associated structures.
- Eugenia, the second last discovered gold (oxide) deposit in the Drummond Basin (1989), is yet to be fully delineated, is open, and the immediate area underexplored.

Region Underexplored – 1st Pass Exploration Only

- Gold anomalism, structurally controlled, is widespread over tens of square kilometres and on all major structures. EPM 15902 approx. 3,000 sq. km.
- Numerous key prospects already identified but yet to have systematic work.
- High potential to discover new oxide gold deposits, masked under the widespread, mainly surficial and geochemically benign younger Tertiary age cover units.



Exploration Value-Add by Drummond Gold

- ❖ Bona fide explorer – have obtained quality data, sort and applied key expertise and modern methods towards unlocking the regions true potential. Mining Leases in good standing.
- ❖ Quality value-adding work undertaken includes:
 - ✓ Data acquisition & consolidation,
 - ✓ Geophysical surveys, processing & modelling,
 - ✓ Sampling & Mapping,
 - ✓ Drilling (RC and Diamond - multi-element analysis),
 - ✓ Expertise & Reviews,
 - ✓ Research & QGS (Sponsorship),
 - ✓ Mine Scoping Study,
 - ✓ Landowner Relations,
 - ✓ Mt Coolon Operational/Office Base.

Opportunities have been high-graded, ranked and prioritised, ready for major step-change drilling discovery success.



Exploration & Mining Opportunity Checklist

Ownership of Major Assets (And by Major Companies)

- Mount Coolon Mine - first mine of Gold Mines of Australia (GMA) from 1930-1939, in effect Western Mining Corporations (WMC) first mine. (Ross Mining & Newcrest)
- 25 years continuous mine life 1914-1939, in 1932 was Queensland's largest gold producer.

High Average Grade (Grade is King)

- Mount Coolon Mine (U/G) from 1930 -1932 produced 179,000oz at an average grade of 18.4g/t.
- Glen Eva and Koala (Mt Coolon) Open Pits mined grades were 6.2g/t Au and 5.6g/t gold respectively.

Latent Value (Legacy Assets – Former Historic Mining Centre)

- Mount Coolon region has been a gold mining area for 100 years – discovery in 1913.
- Last concerted mining phase was in 1992–1997 by Ross Mining NL.

Closeness to Infrastructure (Good Discoveries Made Close to Infrastructure)

- Mount Coolon lies at the crossroads of serviced all weather development roads, grid power, water? and has a public airstrip.
- Close proximity to coalfields services to the immediate east.



Forward Strategy - next steps

Over next 1 to 3 years

- ❖ Drill focus for step-change resource extensions at Mt Coolon (Koala), Eugenia, Glen Eva, and Bimurra.
- ❖ Upgrade Eugenia Resource, drill for extensions - conduct further mine optimisation studies and apply for a ML.
- ❖ Drill test Sullivans IRGS Prospect for possible major gold resource discovery.
- ❖ Conduct targeted program of drill fences for new oxide gold discovery.
- ❖ Review/revise Resources, Mining Studies and Central Gold Production & Processing Hub Concept.

The Company is seeking Joint Venture participation to significantly advance these drill-ready opportunities.





Mt Coolon (Koala) Open Pit

Best Gold Exploration & Development Opportunity in Eastern Australia

- ✓ A focused and advanced portfolio of gold projects and prospects.
- ✓ Multi-million ounce deposit potential – epithermal and IRGS gold styles.
- ✓ A pipeline of drill ready gold opportunities.
- ✓ Tight ownership history and discontinuous modern exploration efforts provides an excellent opportunity for a major new discovery breakthrough, and, growth.





DRUMMOND

DRUMMOND GOLD LIMITED

THANK YOU

Mt Coolon Resources 30 June 2010

Mine	Location	Resource Category									Total			cut-off
		Measured			Indicated			Inferred						
		000' t	Au g/t	Au oz	000' t	Au g/t	Au oz	000' t	Au g/t	Au oz	000' t	Au g/t	Au oz	Au g/t
Koala	Hectorina Pit				15	2.6	1,300				15	2.6	1,300	None
	Underground Extension				205	5.9	39,600	62	5.3	10,600	267	5.7	49,300	3.0
	Tailings	305	1.6	15,800	11	1.6	500	6	1.5	300	322	1.6	16,700	None
	Total	305	1.6	15,800	231	5.5	40,400				604	3.5	67,200	
Eugenia	in whittle pit - direct mill							428	1.5	20,800	428	1.5	20,800	0.5
	outside pit							3,988	1.2	157,500	3,988	1.2	157,500	0.5
	Total							4,416	1.3	178,200	4,416	1.3	178,200	0.5
Glen Eva	Underground below pit				132	7.8	33,200	21,000	5.9	4,000	154	7.5	37,200	3.0
Total		305	1.6	15,800	363	6.3	73,600	4,506	1.3	193,100	5,174	1.7	283,000	

Competent Person Statement attached

Competent Persons Statement

Resources Statement

The data in this report that relates to Mineral Resources for the Eugenia, Glen Eva and Koala Deposit is based on information evaluated by Mr. Simon Tear who is a Member of The Australasian Institute of Mining and Metallurgy (MAusIMM) and who has sufficient experience relevant to the style of mineralisation and type of deposit under consideration and to the activity which he is undertaking to qualify as a Competent Person as defined in the 2012 Edition of the Australasian Code for Reporting of Exploration Results, Mineral Resources and Ore Reserves (the "JORC Code"). Mr. Tear is a full-time employee of H&S Consultants, Brisbane and he consents to the inclusion in the report of the Mineral Resource in the form and context in which they appear.

The Eugenia Gold Resource was updated and announced in the Company's June 2009 Quarterly Report to the Australian Securities Exchange (ASX) dated 29th July 2009, and Amendments to June Quarterly Activities Report 2009, also dated 29th July 2009. The Mt Coolon (Koala) and Glen Eva Gold Resources were updated and announced in the Company's September 2009 Quarterly Report to the Australian Securities Exchange (ASX), dated 30th October 2009. This information was prepared and first disclosed under JORC Code 2004. It has not been updated since to comply with the JORC Code 2012 on the basis that the information has not materially changed since it was last reported.

The Company confirms that it is not aware of any new information or data that materially affects the information included in the market announcements referred to above and that all material assumptions and technical parameters underpinning the estimates in the original announcement continue to apply and have not materially changed.

Exploration Results

The data in this report that relates to Exploration Results, the accuracy and quality of data and the interpretation of mineralisation in the Drummond Basin at Mt Coolon, Central Queensland, are based on information compiled by Mr Brice Mutton who is a Fellow of The Australasian Institute of Mining & Metallurgy (FAusIMM) and who has sufficient experience relevant to the style of mineralisation and type of deposit under consideration and to the activity which he is undertaking to qualify as a Competent Person as defined in the 2012 Edition of the Australasian Code for Reporting of Exploration Results, Mineral Resources and Ore Reserves (the "JORC Code"). Mr Mutton is a Non-executive Director of Drummond Gold Ltd and an industry consultant via Brice Mutton & Associates Pty Ltd, and he consents to the inclusion in the report of the Exploration Results in the form and context in which they appear.





DRUMMOND

DRUMMOND GOLD LIMITED

THANK YOU