



# AUSTRALIA UNITED MINING LTD

## 2014 Annual General Meeting



28 November 2014

# **AUSTRALIA UNITED MINING LTD**

## **2014 Annual General Meeting**

**Chief Executive Officer's Geological  
Presentation  
to Shareholders  
CEO**





# Disclaimer

The material in this presentation has been prepared by Australia United Mining Limited ACN 126 540 547 (Australia United Mining) and is general background information about Australia United Mining's activities current at the date of this presentation. The information is given in summary form and does not purport to be complete. Information in this presentation, including forecast financial information should not be considered as advice or a recommendation to investors or potential investors and does not take into account investment objectives, financial situation or needs of any particular investor. These should be considered, with or without professional advice when deciding if an investment is appropriate. Persons needing advice should consult their stockbroker, solicitor, accountant or other independent financial advisor.

The release, publication or distribution of this presentation in certain jurisdictions may be restricted by law and therefore persons in such jurisdictions into which this presentation is released, published or distributed should inform themselves about and observe such restrictions.

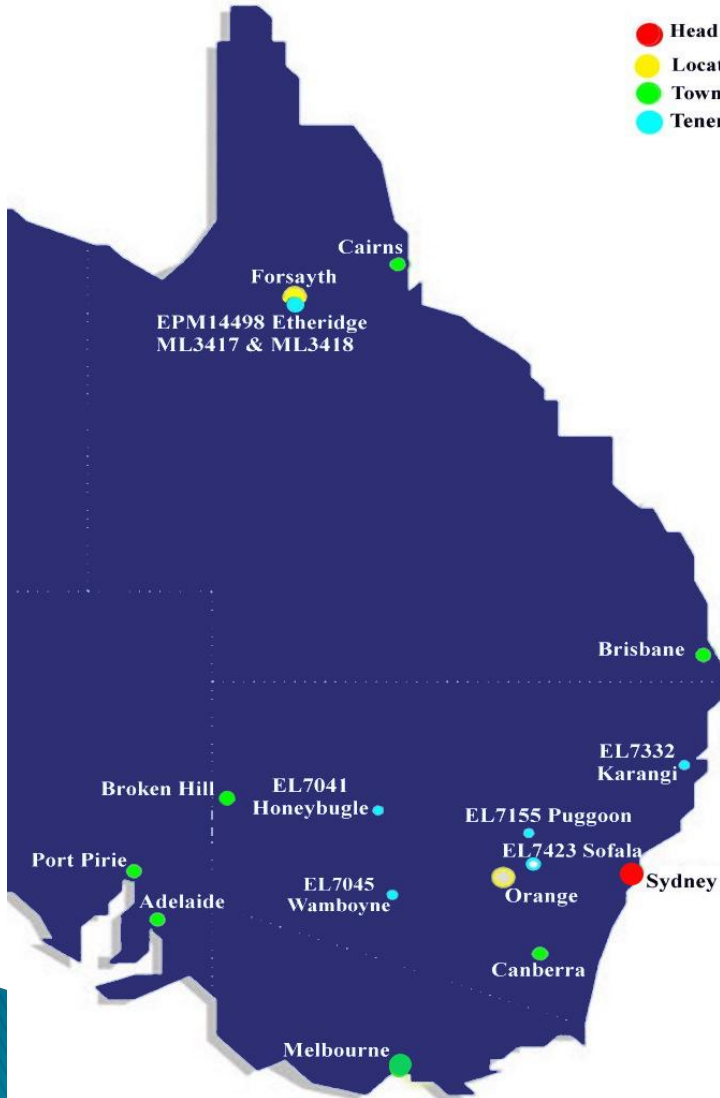
This presentation does not constitute, or form part of, an offer to sell or the solicitation of an offer to subscribe for or buy any securities, nor the solicitation of any vote or approval in any jurisdiction, nor shall there be any sale, issue or transfer of the securities referred to in this presentation in any jurisdiction in contravention of applicable law.

Certain statements made in this presentation are forward-looking statements. These forward-looking statements are not historical facts but rather are based on Australia United Mining's current expectations, estimates and projections about the industry in which Australia United Mining operates, and beliefs and assumptions. Words such as "anticipates", "expects", "intends", "plans", "believes", "seeks", "estimates", and similar expressions are intended to identify forward-looking statements. These statements are not guarantees of future performance and are subject to known and unknown risks, uncertainties and other factors, some of which are beyond the control of Australia United Mining, are difficult to predict and could cause actual results to differ materially from those expressed or forecasted in the forward-looking statements. Australia United Mining cautions investors and potential investors not to place undue reliance on these forward-looking statements, which reflect the view of Australia United Mining only as of the date of this presentation. The forward-looking statements made in this presentation relate only to events as Australia United Mining the date on which the statements are made. Australia United Mining will not undertake any obligation to release publicly any revisions or updates to these forward-looking statements to reflect events, circumstances or unanticipated events occurring after the date of this presentation except as required by law or by any appropriate regulatory authority.



# Tenements and ML's

- Head Office
- Location
- Town
- Tenements



## QUEENSLAND:

EPM14498

ML3417 ML3418

## NSW :

EL7423 Sofala

EL7332 Karangi

EL7045 Honeybugle

EL7155 Puggoon

EL7041 Wamboyne

# Highlights 2014

## **Forsayth**

- Drilling along strike from significant gold deposits at Goldsmiths and Canadian ML's (Fully contained within Australia United Mining's EPM14498)
- Drilling has confirming mineralisation continues onto Australia United Mining's ground
- Drilling almost completed.

## **Sofala**

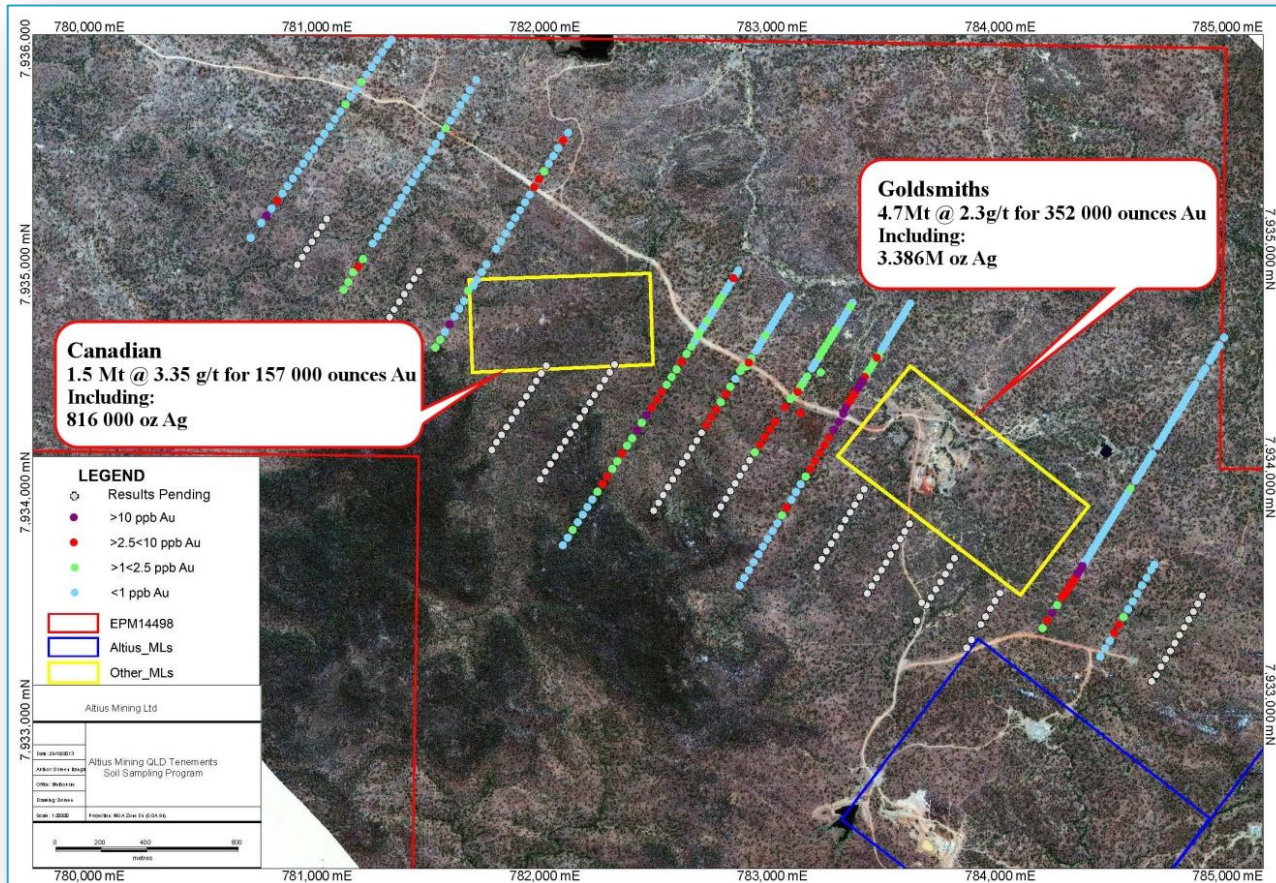
- Drilling is about to commence
- Exploration Model tested by IP survey in 2013
- Ready to drill high quality targets.

## **Other NSW**

- Ongoing exploration at Australia United Mining's other tenements.



# Forsayth Soil Geochemistry



Soil geochemistry shows mineralization continues between and along strike from the Canadian and Goldsmiths Gold deposits



# Forsayth Drilling Results

- ▶ A total of 9109m drilled in 2014
- ▶ Best Results to Date
  - ▶ Lady Franklin
    - ▶ L35ZK1 1.9m @ 3.39 g/t from 71.6m
    - ▶ L27ZK1 3.2m @ 8.67 g/t from 80m
  - ▶ West Canadian
    - ▶ C65ZK1 0.7m @ 57 g/t from 60.9m
    - ▶ C57ZK1 2.2m @ 7.24 g/t from 73.2m
  - ▶ West Goldsmiths
    - ▶ G17ZK2 12.3 m @ 5.7 g/t Au from 175.1m
    - ▶ G17ZK3 1.7m @ 11.37 g/t Au from 202.3m

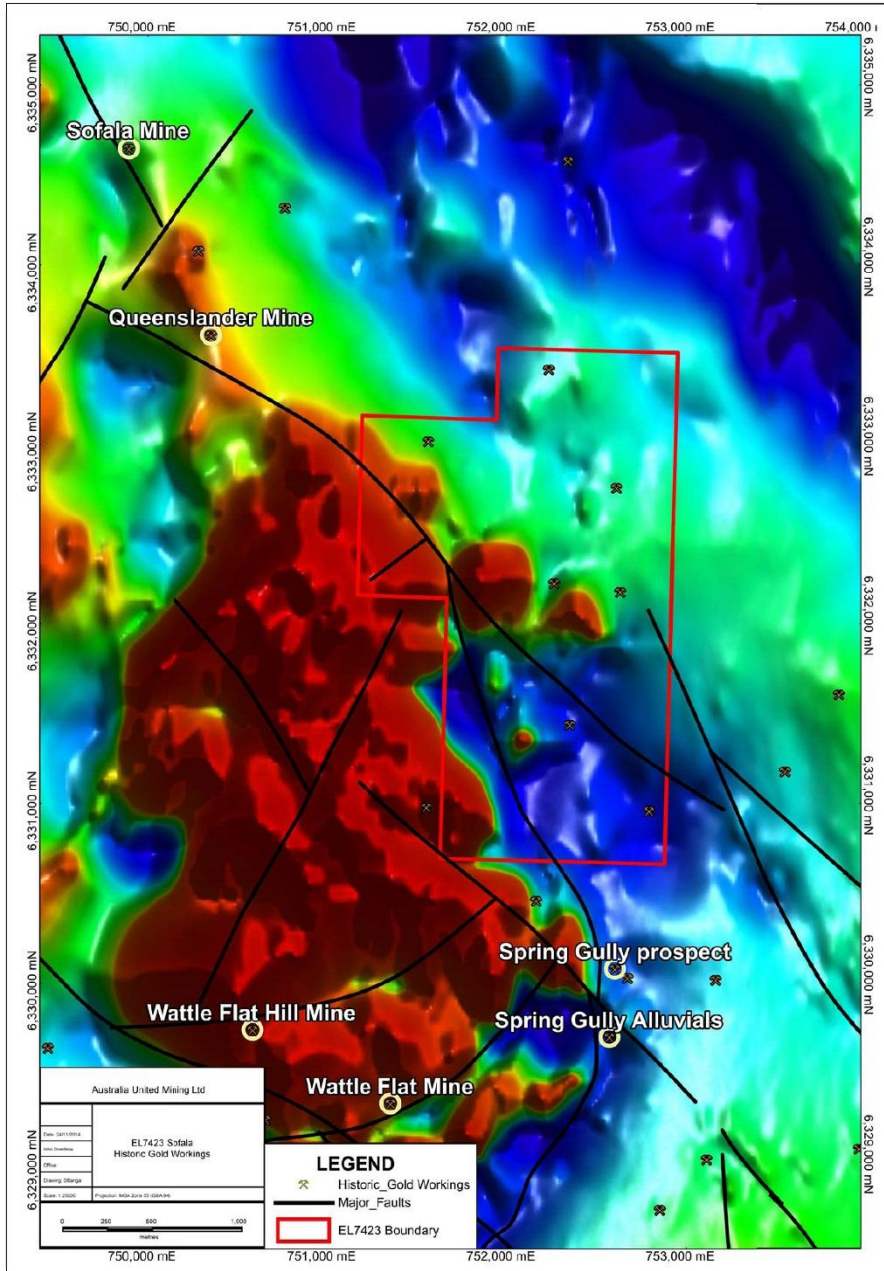


# Sofala

Wattle Flat Magnetic Zone

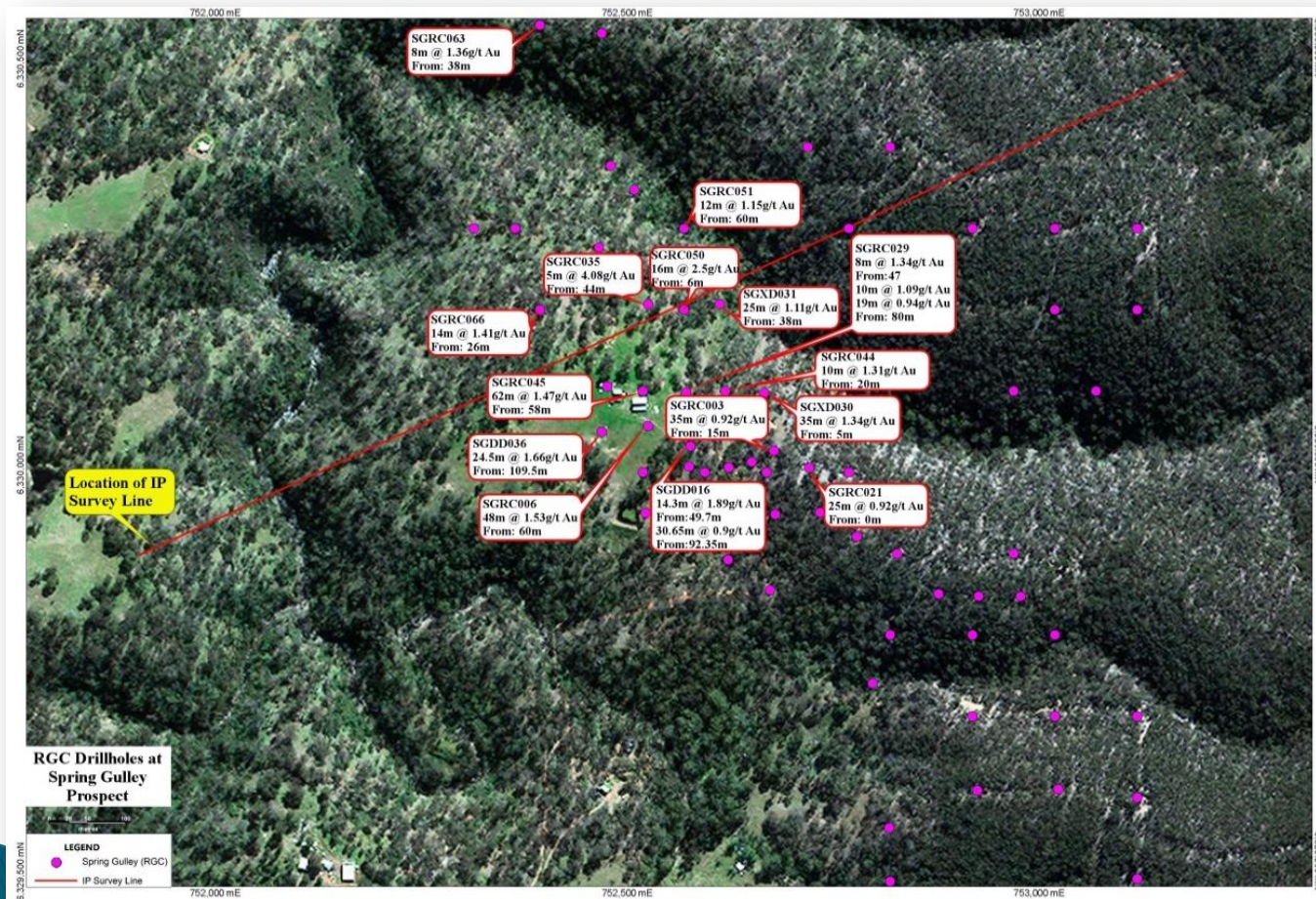
Volcanic epicenter providing heat for  
epithermal mineralization

Numerous gold occurrences (mainly along  
the periphery)



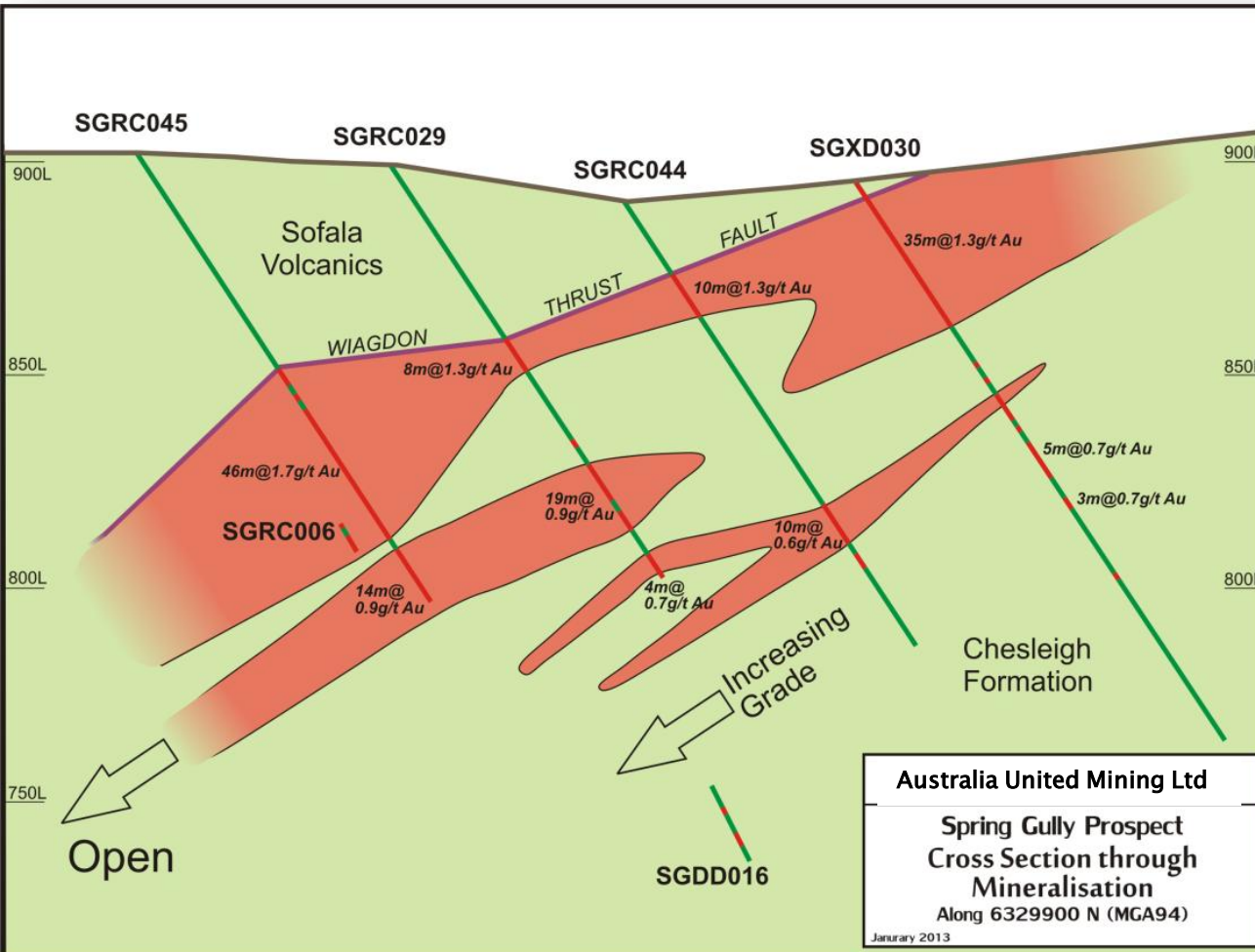


# Sofala, Spring Gully



- RGC 6980m RC and diamond drilling 1993-97
- RGC
- Focus on Spring Gully area.

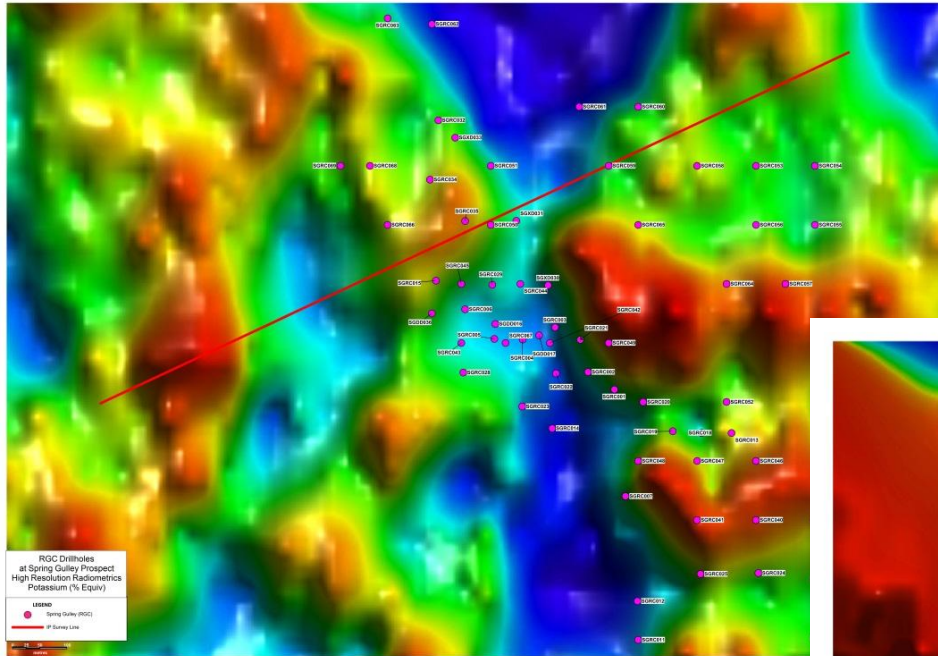
# Spring Gully Cross Section



- Broad zones of mineralisation.
- Slight grade increase to west.
- Open to west and at depth.

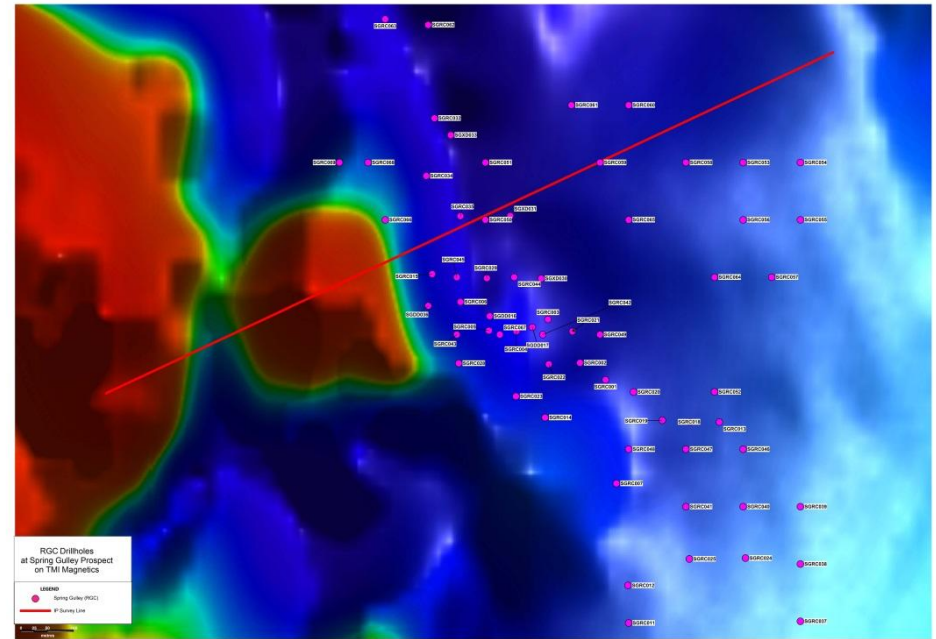


# Sofala Geophysics



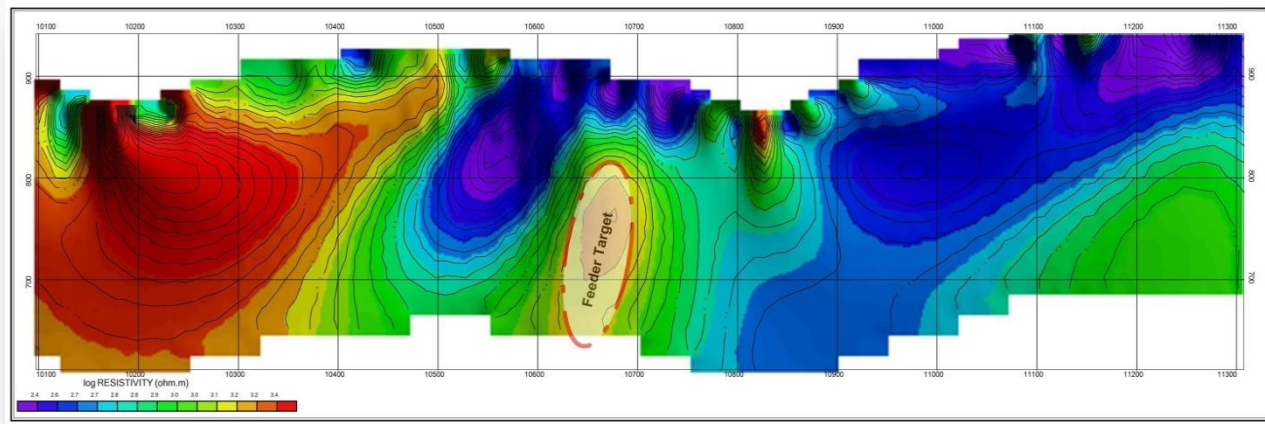
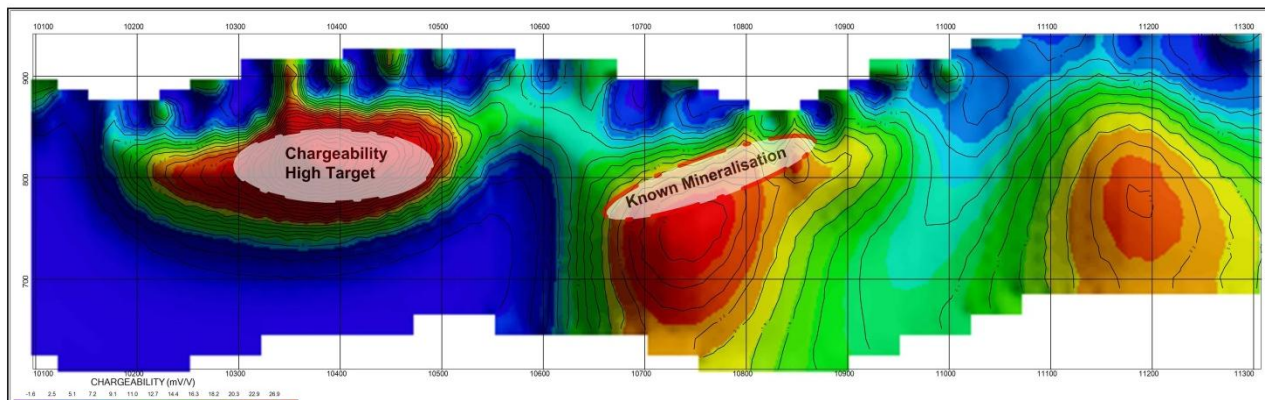
- Potassium halo surrounding magnetic high.

- High Resolution Radiometrics Potassium. Spring Gully



- TMI Magnetics. Spring Gully

# Spring Gully IP



- Known mineralisation clearly shown as high chargeability
- Coincident chargeability and resistivity high (possible quartz rich feeder).
- Additional Chargeability high in west coincident with potassium high.



# What Next?

- Drilling Ready to Commence at Sofala
- Maintain other NSW exploration leases



**For further information, please contact:**

**Matt Bull**

Chief Executive Officer

Australia United Mining Ltd

Email: [m.bull@australiaunitedmining.com.au](mailto:m.bull@australiaunitedmining.com.au)