



5 December 2014

Technical Presentation to 11th SA Exploration and Mining Conference

Attached is a technical presentation to be given by Mr John Anderson, Managing Director of Investigator Resources Limited to the 11th SA Exploration and Mining Conference today, 5 December 2014.

For further information contact:

Mr John Anderson
Managing Director
Investigator Resources Limited
Phone: 07 3870 0357

Silver & Copper Targeting Around the Paris Project

**INVESTIGATOR
RESOURCES
LIMITED**



ASX : IVR

Technical Presentation by

John Anderson – Managing Director

11th SA Exploration and Mining Conference

5th December 2014

Disclaimer & Competent Person Statement



DISCLAIMER

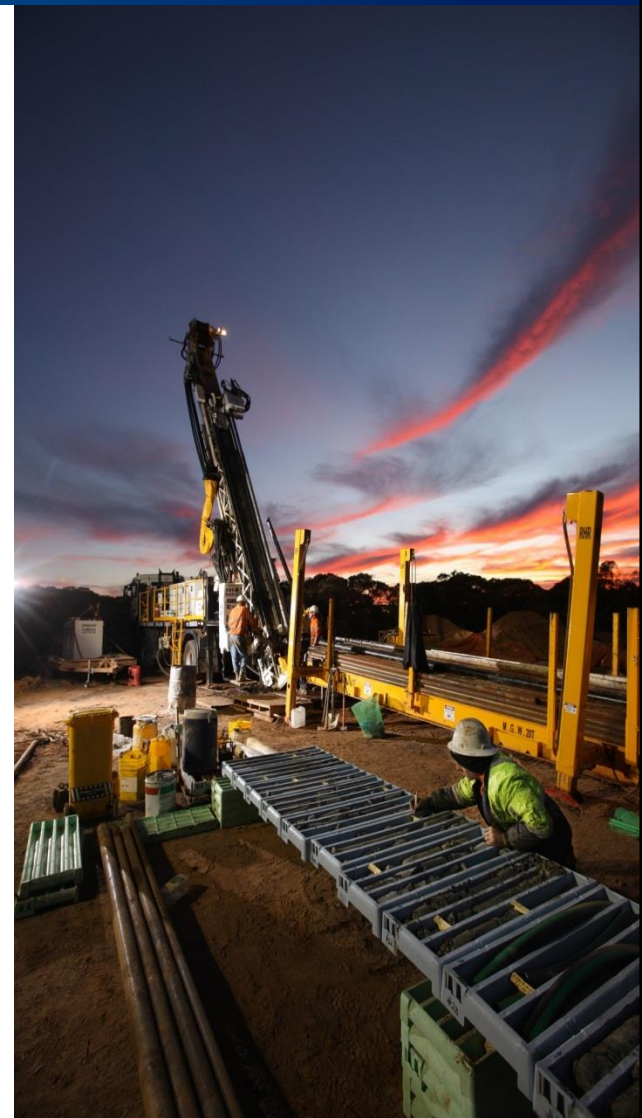
The information in this presentation is published to inform you about Investigator Resources Limited and its activities. Some statements in this presentation regarding estimates or future events are forward looking statements. They involve risk and uncertainties that could cause actual results to differ from estimated results. All reasonable effort has been made to provide accurate information, but we do not warrant or represent its accuracy and we reserve the right to make changes to it at any time without notice.

To the extent permitted by law, Investigator Resources Limited accepts no responsibility or liability for any losses or damages of any kind arising out of the use of any information contained in this presentation. Recipients should make their own enquiries in relation to any investment decisions.

COMPETENT PERSON STATEMENT

The information in this presentation relating to exploration results is based on information which has previously been released to the market and was compiled by Mr. John Anderson who is a full time employee of the company. Mr. Anderson is a member of the Australasian Institute of Mining and Metallurgy. Mr. Anderson has sufficient experience of relevance to the styles of mineralisation and the types of deposits under consideration, and to the activities undertaken, to qualify as a Competent Persons as defined in the 2012 Edition of the Joint Ore Reserves Committee (JORC) Australasian Code for Reporting of Exploration Results, Mineral Resources and Ore Reserves. Mr. Anderson consents to the inclusion in this presentation of the matters based on information in the form and context in which it appears.

The information in this presentation that relates to Mineral Resources Estimates at the Paris Project is extracted from the report entitled “Maiden Resource Estimate for Paris Silver Project, South Australia” dated 15 October 2013 and is available to view on the Company website www.investres.com.au. The Company confirms that it is not aware of any new information or data that materially affects the information included in the original market announcements and that all material assumptions and technical parameters underpinning the estimates in the relevant market announcement continue to apply and have not materially changed. The company confirms that the form and context in which the Competent Person’s findings are presented have not been materially modified from the original market announcement.





Strategy

Greenfields explorer with the right track record

Applying leading edge research outcomes to improve discovery success in opportune belts

Focus on the southern Gawler Craton of South Australia (Eyre & Yorke Peninsulas)

Advantages

Strong ground holding

Based on innovative ideas and approach

Foundation Paris silver resource - 20Moz

First mover advantages in rolling out Paris know-how

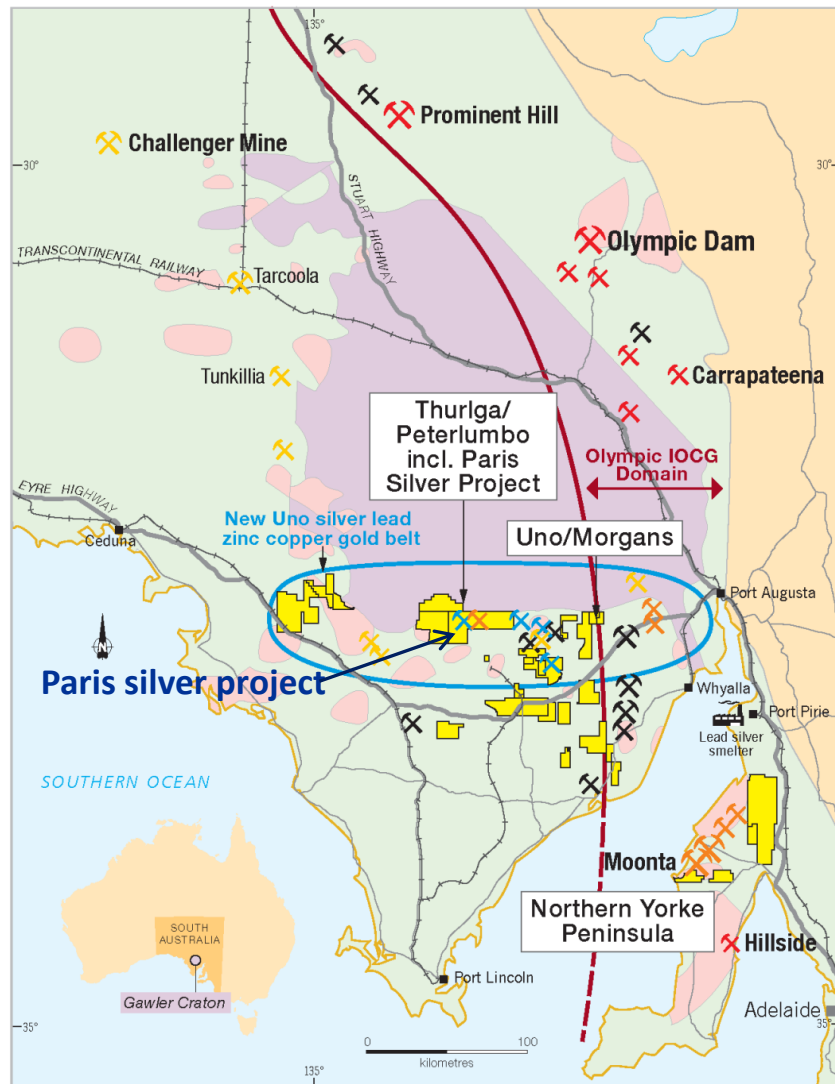
Multiple discovery opportunities – silver-lead & copper-gold

Well funded – raised \$4.6m plus \$2.3m R&D rebate mid-2014

Drilling to unlock the mineral potential of an emerging belt
(Drilling immediate copper gold targets either side of Christmas)



Strong tenement holding in emerging belt



 IVR and JV tenement

Close to infrastructure

including Port Pirie lead-silver smelter


Prime geology

 Gawler Range Volcanics

 Hiltaba Granite

 Gawler Craton

Pedigree with emerging extensions

 Iron oxide copper/gold +/- uranium mine, deposit

 Iron ore mine, deposit

 Gold mine, deposit

 Silver lead zinc deposit, prospect

 Copper prospect

2011 Paris discovery validated IVR's innovative concept/approach & firmed the surrounding potential for OD-aged deposits of various styles along 200km long east-west Uno Province

Paris silver project – maiden resource October 2013

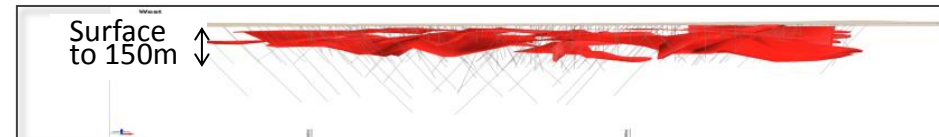
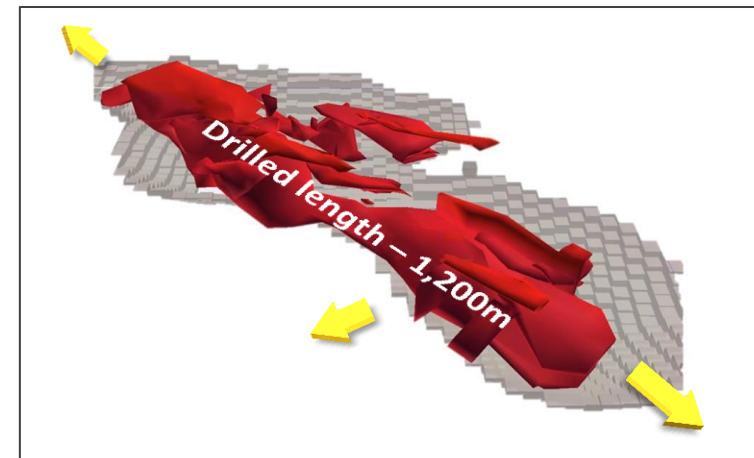


Category	Tonnes	Grade	Contained silver	Grade	Contained Lead
Inferred	5.9Mt	110g/t Ag	20Moz	0.6% Pb	38kt

Based on a cut-off grade of 30g/t Ag

Five Key Points:

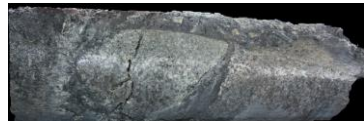
1. **The Grade** - 110g/t Ag grade is among the highest silver grades in Australia
2. **The Ounces** - 20Moz is just the start
3. **It's Shallow & Soft** - 5 to 150m from surface
4. **Preliminary Metallurgy** – positive recoveries indicate conventional pathways & optimisation potential
5. **High grade component** - About 30% of the resource tonnes contains 60% of the contained silver ounces



Using first-mover know-how to seek new silver-lead systems & copper-gold deposits around Paris



WARM ————— *Paris target vectors* —————→ **HOT**



Distal volcanic & granite breccia



Altered overlying volcanics



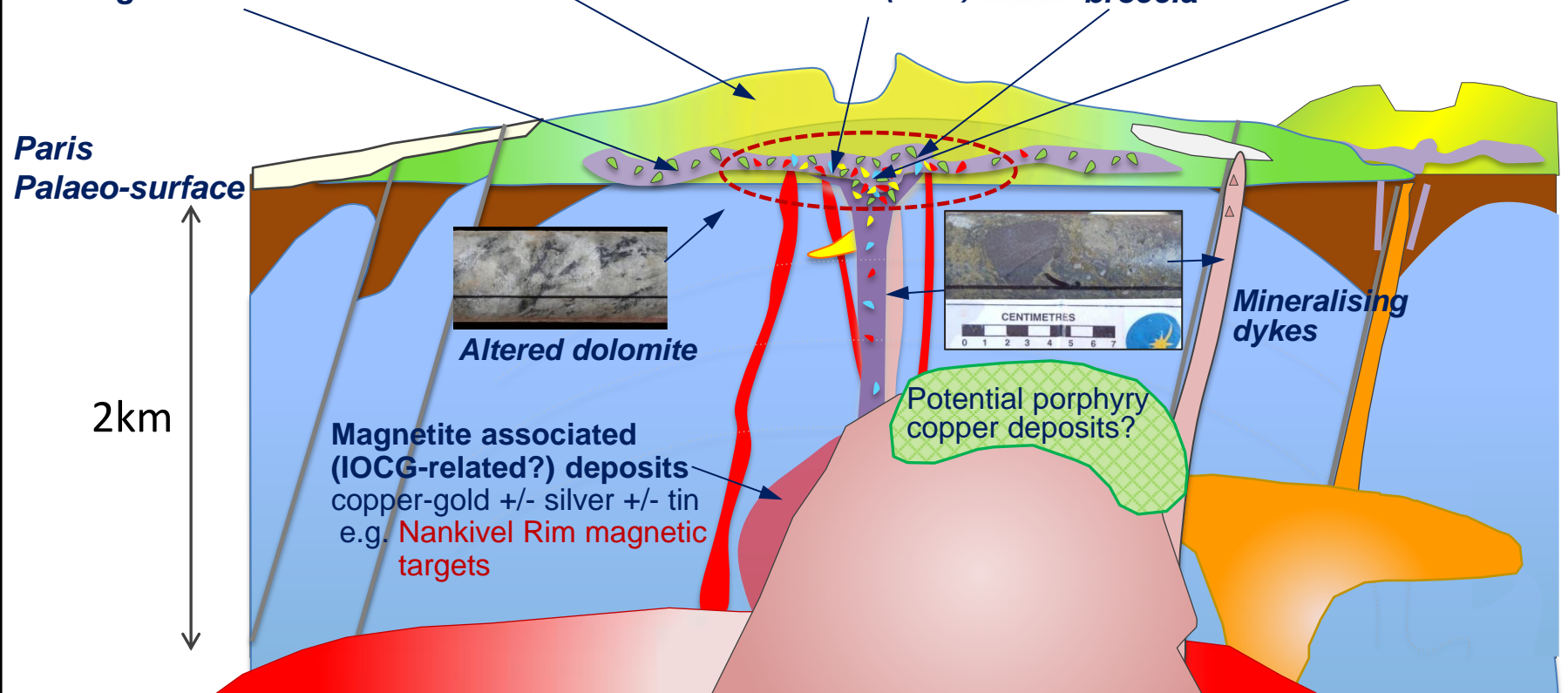
Altered polymict breccia (vent)



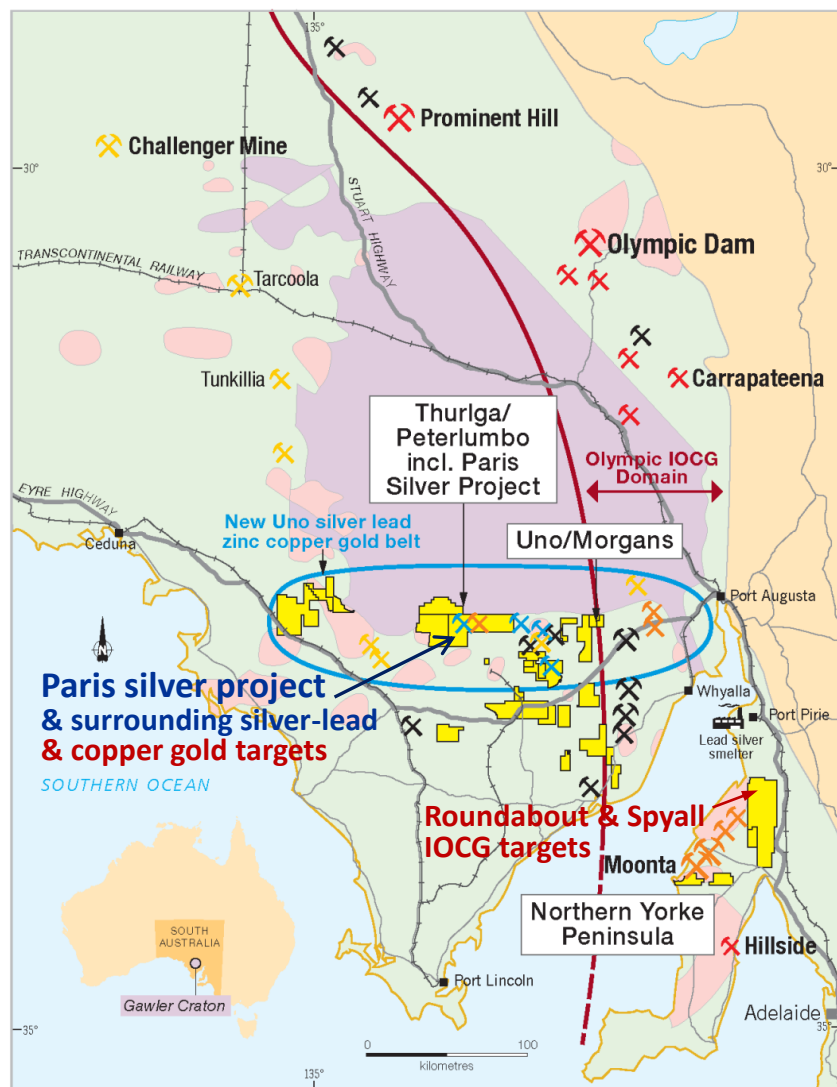
Hydrothermal breccia



Sulphide fragments



Maintaining momentum into 2015



Recent activities

Thurlga JV farm-in immediately west of Paris

Scout drilling around Paris & at Uno/Morgans

--> breakthroughs near Paris:-

- 3 potential large silver-lead systems
- Initial Cu Au intersection in first of multiple untested magnetic targets

Followup airborne magnetic surveys

- To define new copper-gold targets
- First exploration under Thurlga JV

Access negotiated to Roundabout & Spyall IOCG targets - on extensions to historic Moonta copper field on Yorke Peninsula

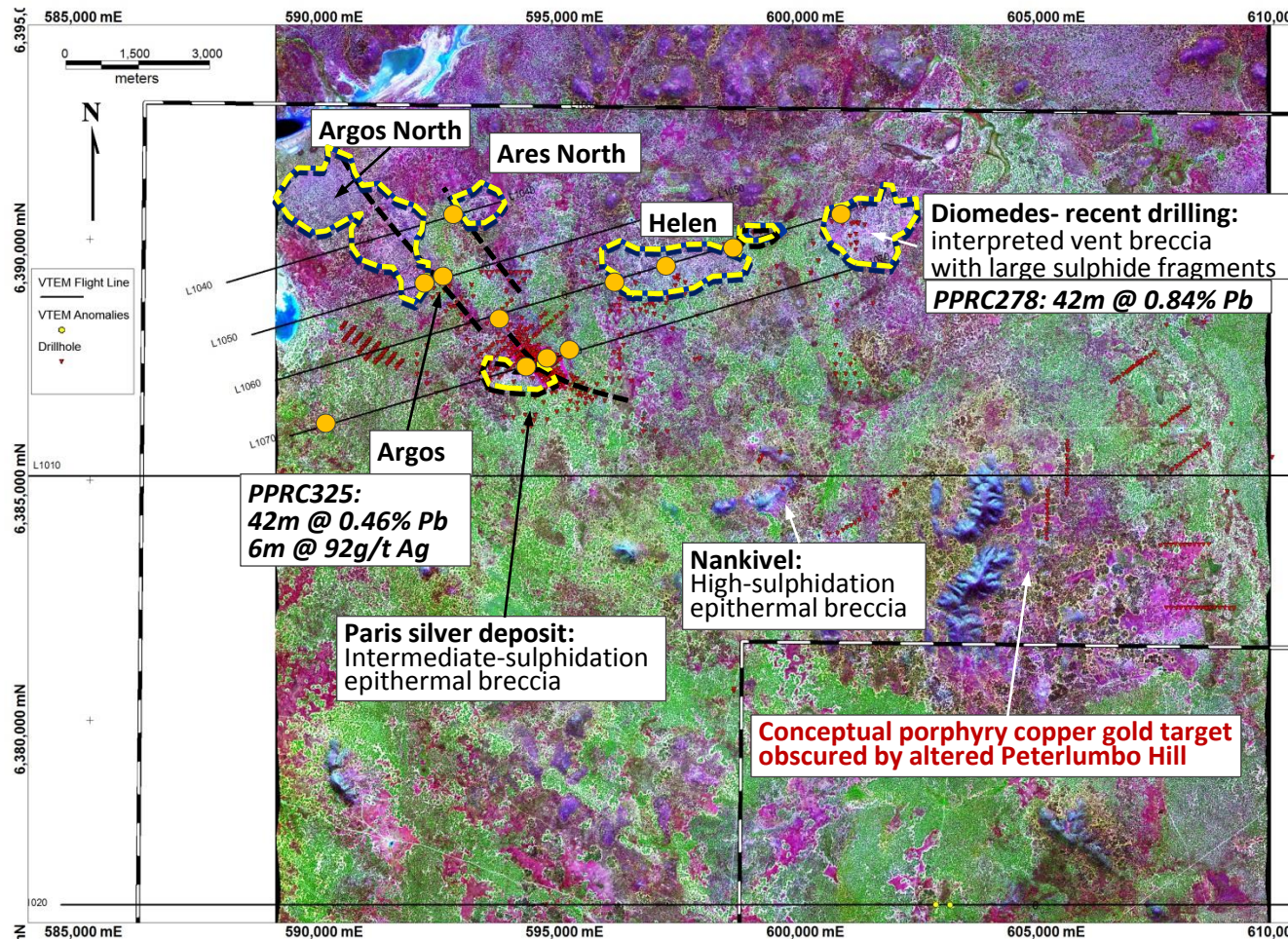
Upcoming drilling

Accessible Cu Au targets near Paris (December)
Roundabout & Spyall IOCG targets (January)

Recent scout drilling identified large Paris-style system at Diomedes & similar potential at undrilled Argos North & Ares North



Collaborative Hyperspectral & VTEM surveys show prospective trends & alteration systems



3 potential large new silver-lead systems
5–7km from Paris:
Diomedes, Argos North & Ares North (plus at Ajax - off map 35km from Paris)

Paris - Argos & Ares spectral trends

Spectral anomalies mapping altered volcanics with potential for deeper silver-lead deposits in target palaeo-surface

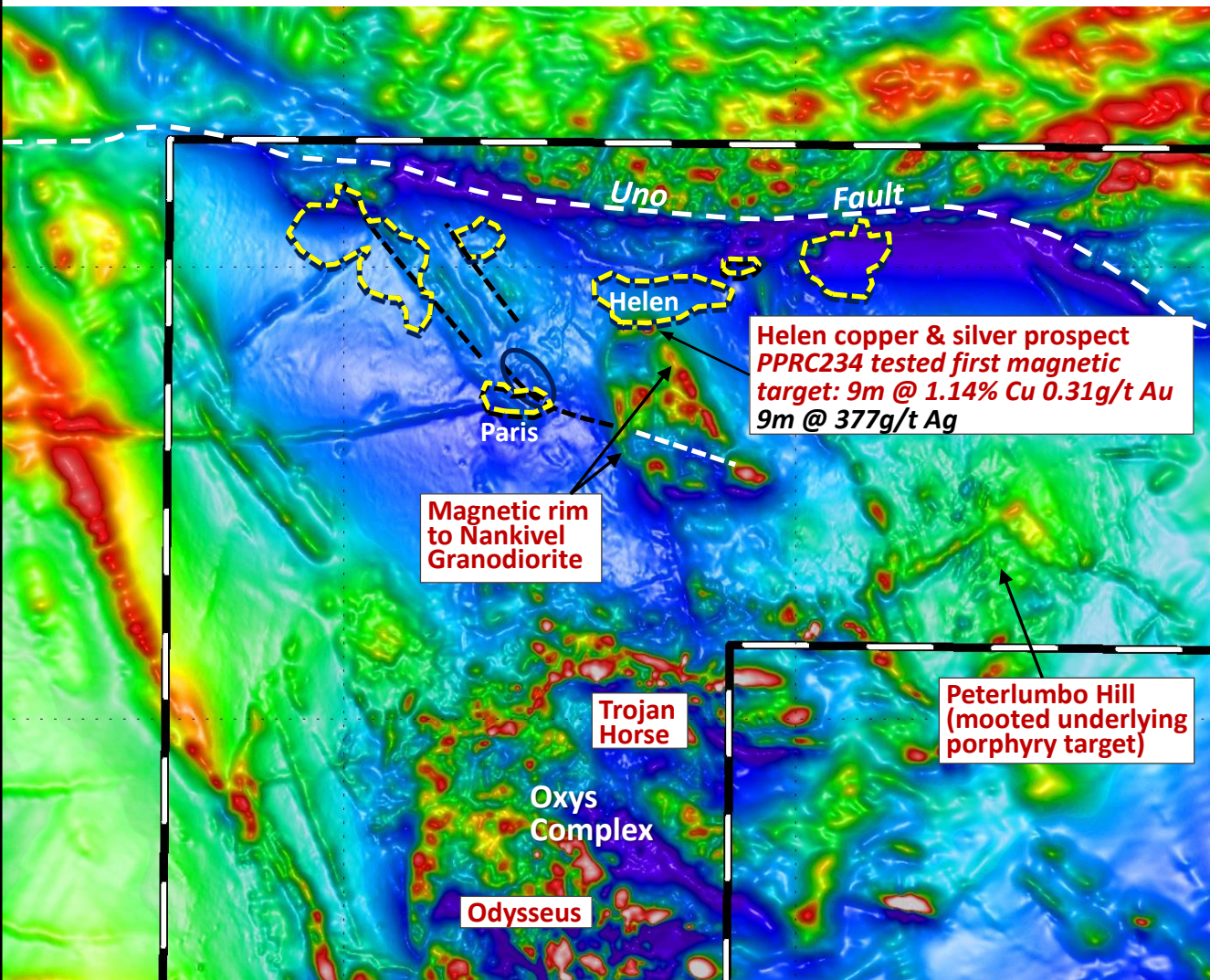
Supported by CSIRO VTEM electromagnetic survey:

VTEM traverse & interpreted anomaly

Electrical geophysics being considered to assist targeting including depth to prospective palaeo-surface ahead of further drilling in such large target areas

5km

Recent scout drilling also made significant Cu Au intersection revealing extensive untested copper gold potential near Paris



Magnetic Image (TMI-RTP)

More than 20km of prospective strike containing new magnetic copper-gold targets around intrusive rims south of Paris-style target systems:

Magnetic Rim to Nankivel Granodiorite¹

Trojan Horse (drill-ready)

Odysseus²

¹ Eastern flank needs heritage survey; western flank mostly drill-ready

² Needs heritage survey

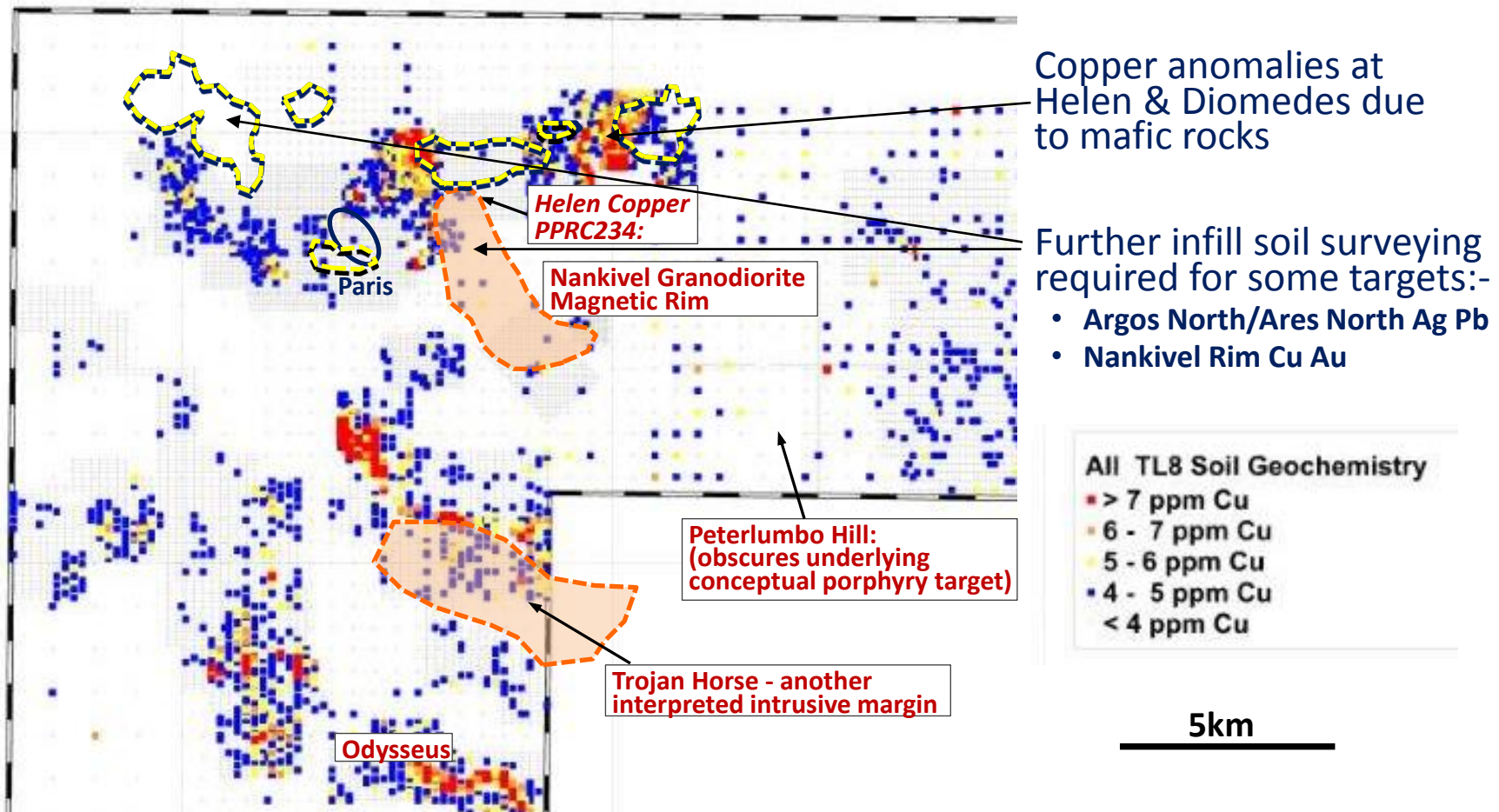
Structural, dyke & intrusive patterns recognised connecting silver & copper deposits or targets

5km

Supported by copper soil geochemistry



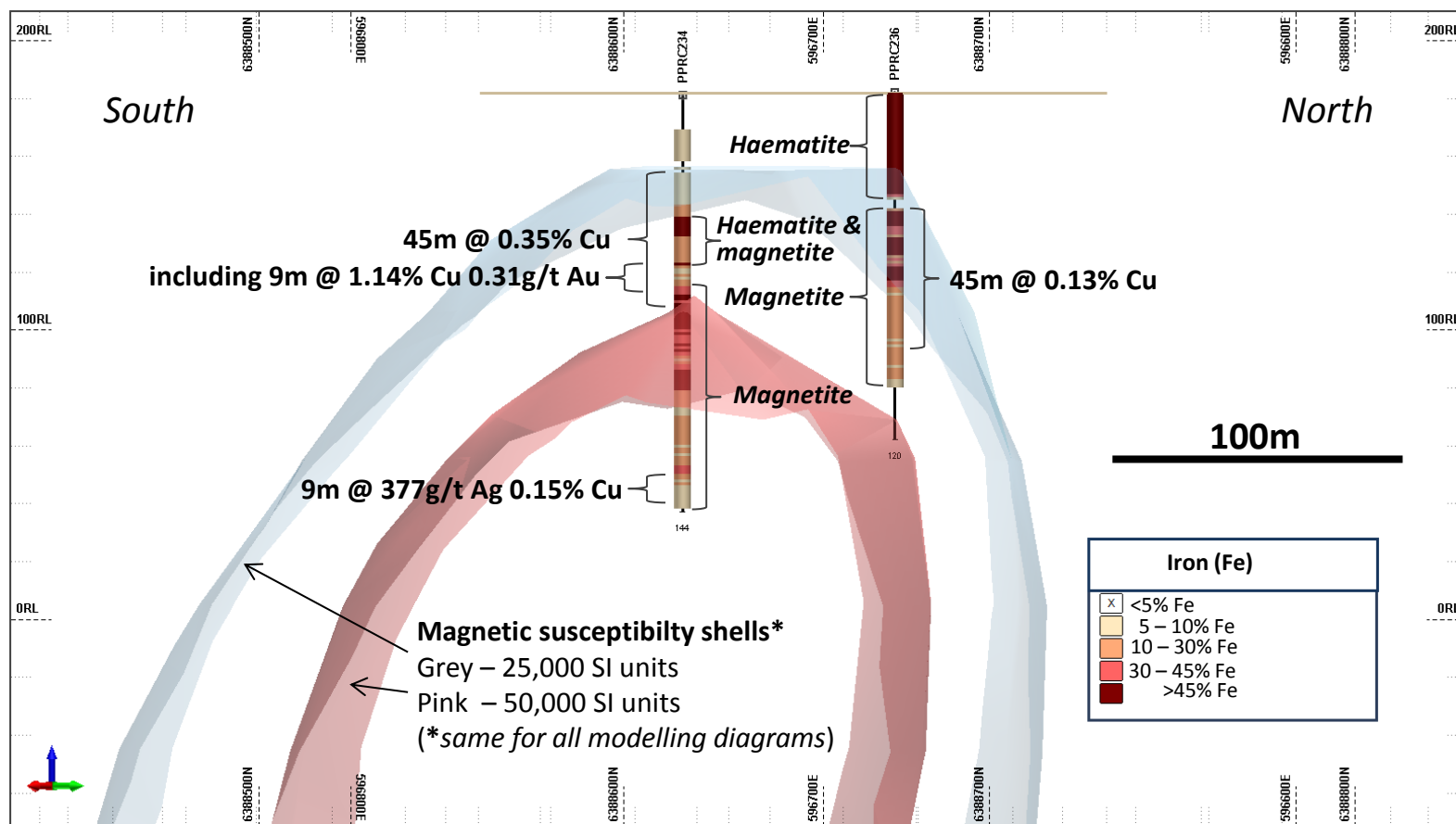
Copper-in-soil anomaly plan – Supporting Cu anomalies at Trojan Horse & Odysseus
But potential for blind deposits - poor copper-in-soil signatures over Paris, Helen Copper & Peterlumbo Hill due to cover



Helen copper prospect - Modelled section



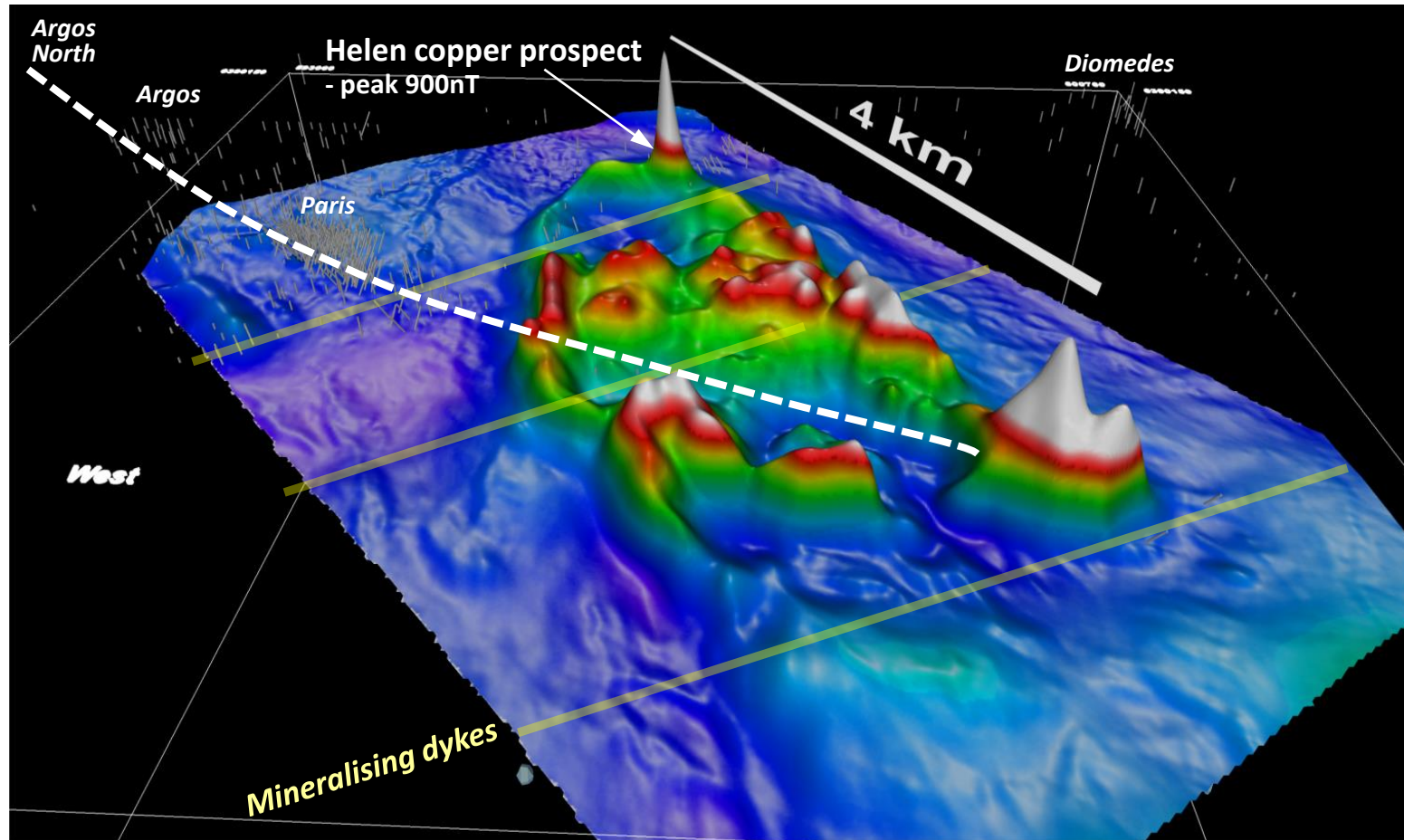
- Confirms:-
- 1) connection of copper gold with magnetite & with silver
 - 2) potential for copper gold in magnetite (iron-oxide) in the Paris field
- Follow up drilling about to commence with two deeper holes*



Nankivel Rim - Detailed airborne magnetic survey



Produced multiple new magnetic targets for copper gold & improves geological framework



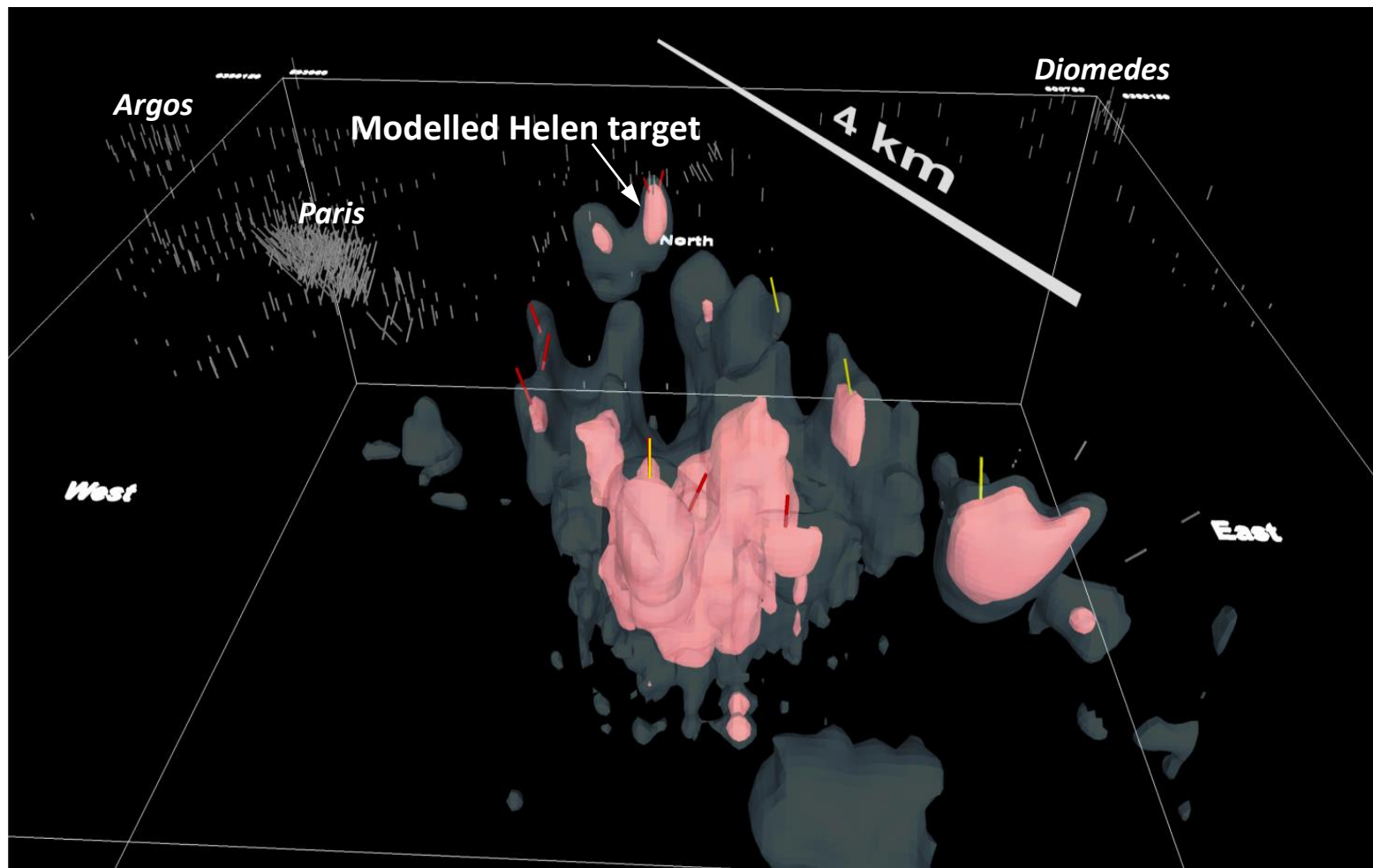
Nankivel Rim – modelling magnetics as direct targets or as lead-ins to copper gold in adjacent magnetic lows



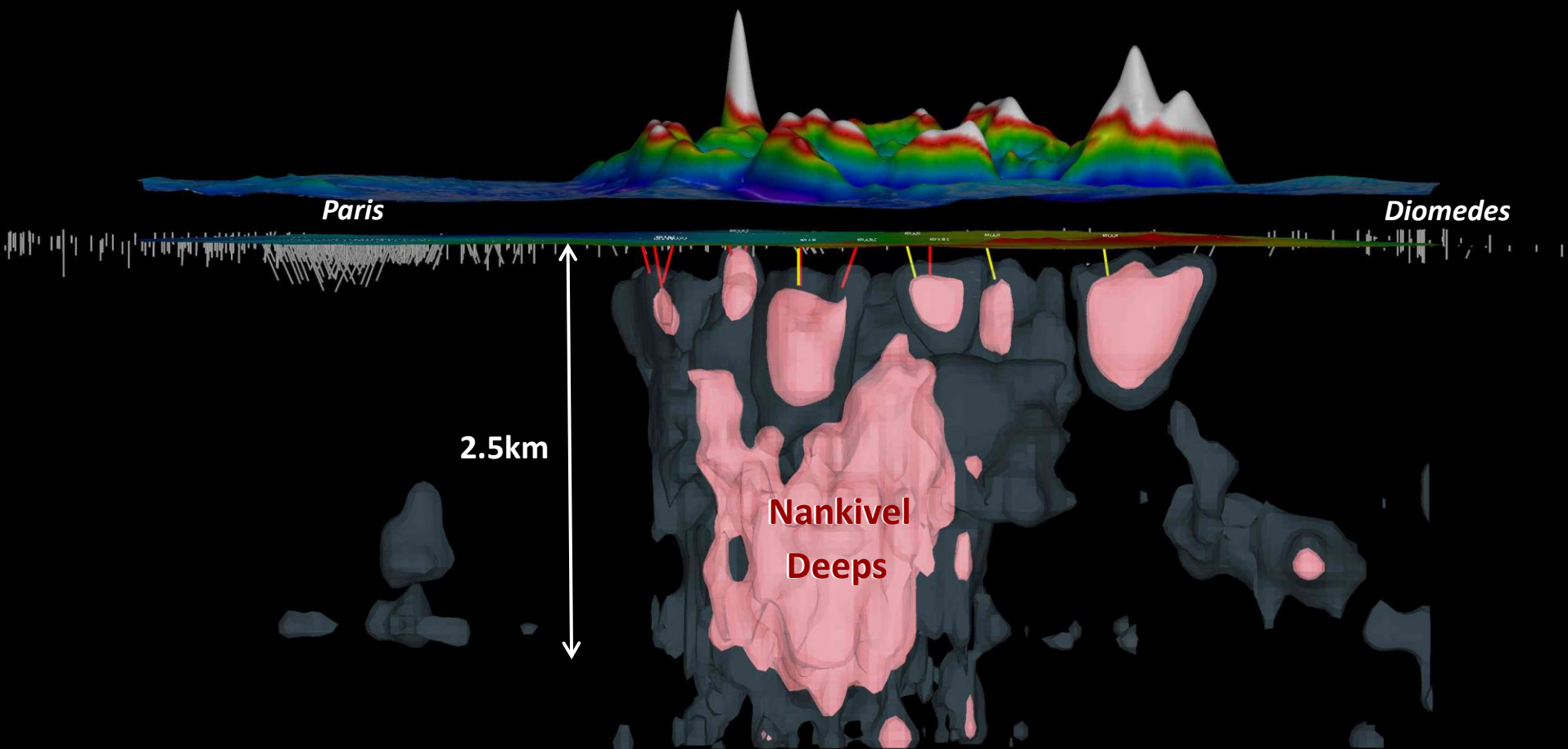
Proposed drillholes

/ Scheduled to be drilled next week

\ Awaiting heritage survey



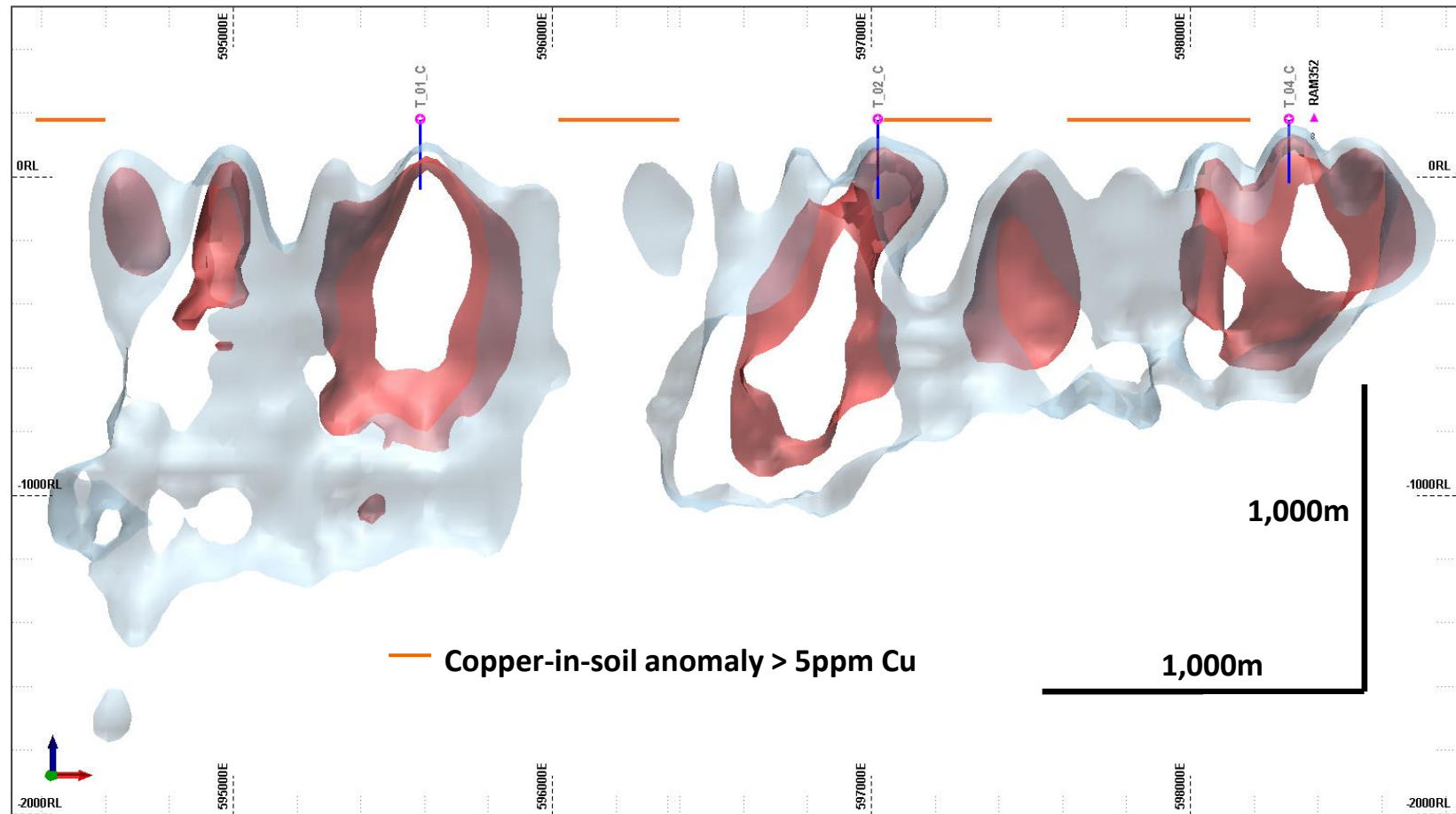
Modelled Nankivel Deepes – large system?

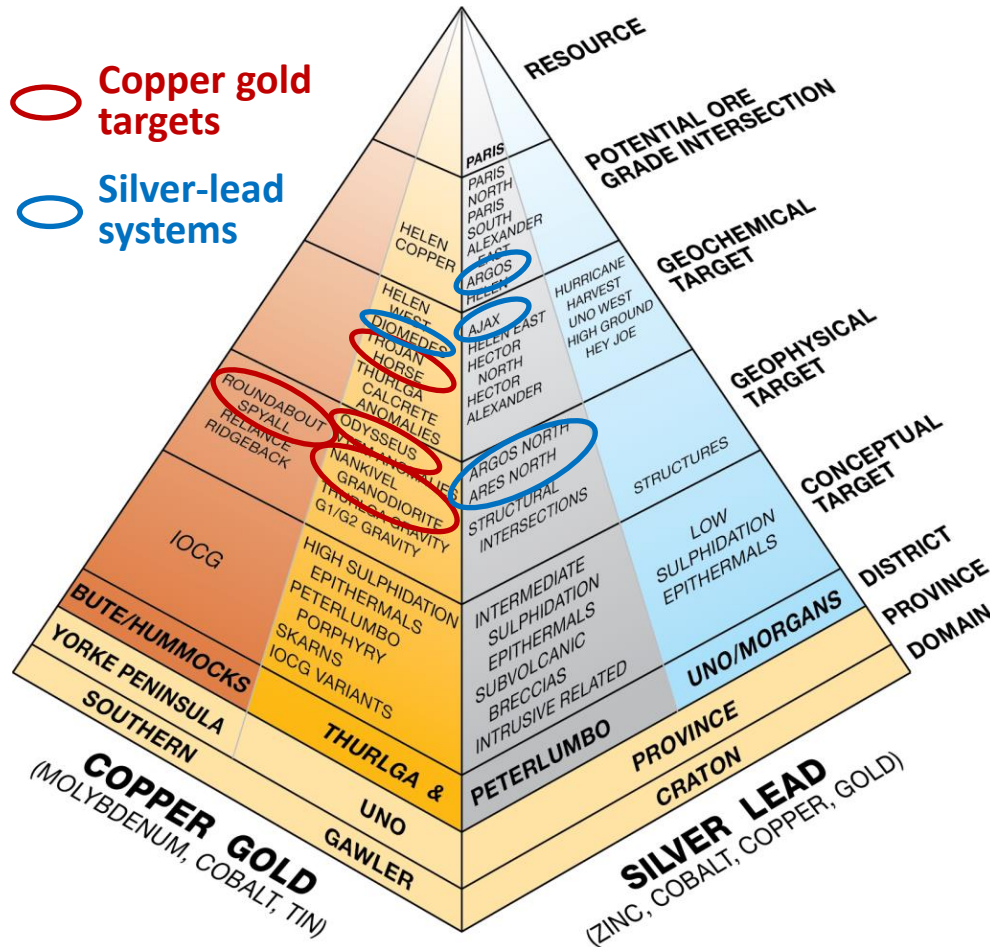


Trojan Horse – magnetic & copper soil targets



East-west section showing large modelled magnetic targets with interspersed copper anomalies & three of six proposed holes to be drilled in December

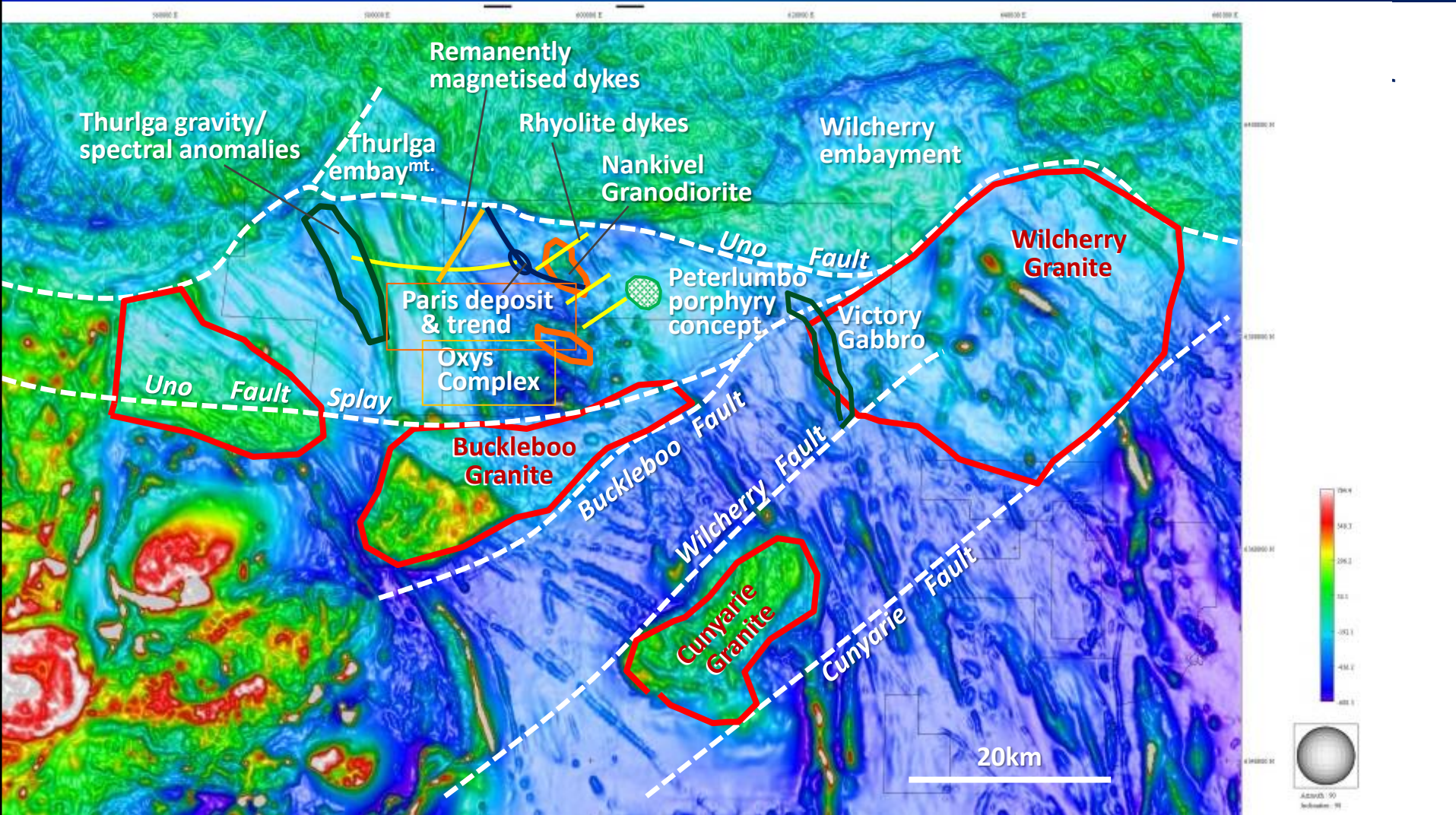




Balance of Nankivel Rim, Odysseus (Cu Au)
Argos/Ares North, Diomedes, Ajax (Ag Pb)

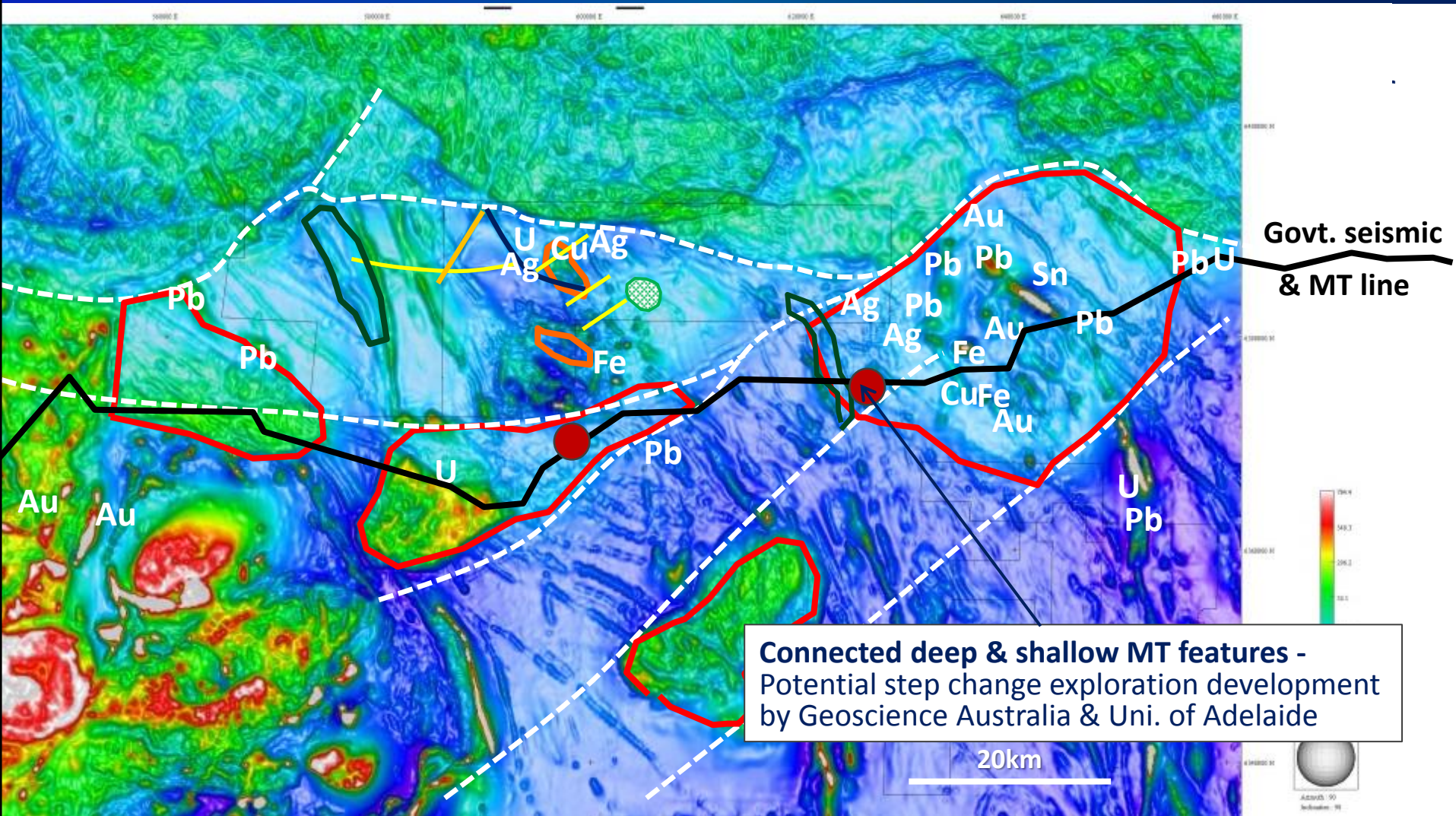
Targeting the new opportunities

- magnetics interpretation of structural & intrusive framework

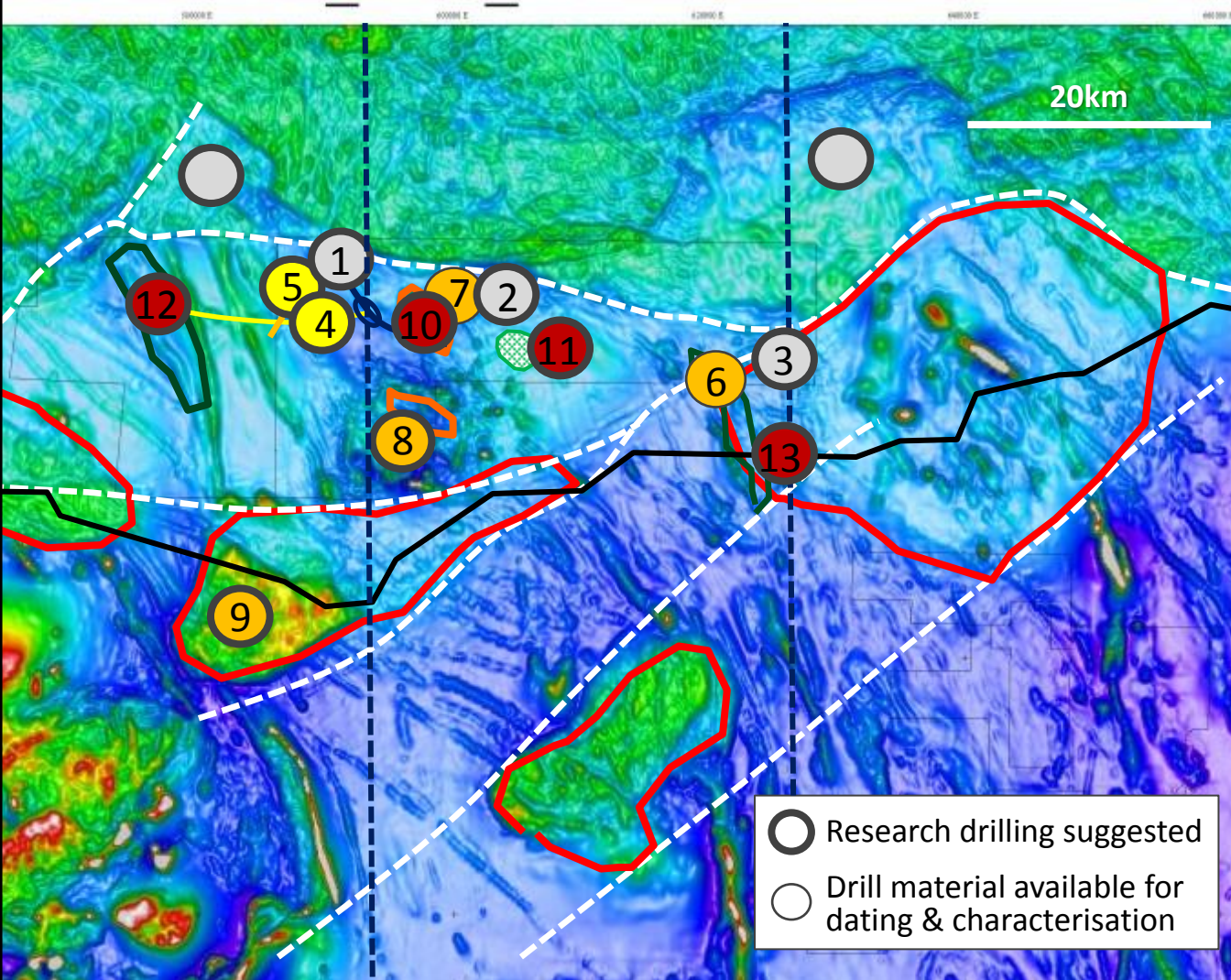


Paris region – a well mineralised belt with big deposit potential

What is the role of the Uno Fault system - scalloped faults on caldera margin?








Collaborative Research opportunities



In progress with IVR:
Paris mineralogy, Spectral/
Hylogger, VTEM, geobotanical

*Recommended for
research consideration:*

-  **Depth to prospective Paris palaeo-surface**
 1. Argos North
 2. Diomedes
 3. Ajax (plus Wilcherry & Thurlga embayments)
-  **Feeder dykes**
 4. Paris-Thurlga dyke
 5. Remanently magnetised
-  **Copper source rocks/drivers**
 6. Victory Gabbro
 7. Nankivel Granodiorite
 8. Oxys complex
 9. Buckleboo mafic phase
-  **Big systems potential**
 10. Nankivel Deepes
 11. Peterlumbo Porphyry
 12. Thurlga gravity/spectral
 13. MT Finger of God
-  **N-S seismic/MT surveys**
to characterise Uno Fault
system (caldera margin?)

Conceptual section for the Uno Province

