

## ASX RELEASE

Tellus Resources Ltd is an Australian-based oil, gas and mineral exploration company with licences in Utah, Madagascar, South Australia, Queensland and New South Wales.

### Directors:

Robert Kennedy (**Chairman**)  
 Carl Dorsch (**Managing Director**)  
 Neil Young (**Non-Executive Director**)

### Issued Shares:

298,848,295 ordinary shares

### Tellus Resources Ltd

ASX Code: TLU

T: +61 8 8100 9200

F: +61 8 8227 0544

Level 5, 70 Pirie Street

(PO Box 190, Rundle Mall)

ADELAIDE 5000

SOUTH AUSTRALIA

Website: [www.tellusresources.com.au](http://www.tellusresources.com.au)

### Enquiries :

Carl Dorsch

+61 (0)400 508 088

[carl.dorsch@tellusresources.com.au](mailto:carl.dorsch@tellusresources.com.au)

## NSW MINERAL TENEMENT UPDATE

### Highlights

- **Cobar Style Mineralisation discovered at Byrnes Creek**
- **Massive pyrrhotite-rich sulphides over 2m (true width not known)**

Tellus Resources Ltd ("TLU" or "the Company") is pleased to provide the following update on its NSW Mineral Project. A quick look RC drilling program has just been completed in the Byrne's Creek area within EL 7993 (Triangle Flat) in line with the previous announcement made on the 12<sup>th</sup> November 2014.

The drill program (Table 1) was targeting the significant surface base metal anomalism identified in the previous XRF soil sampling program conducted in late October 2014.

The second of two holes (BCRC002) intersected a mineralized structure over 20m (103 – 123m) of intense chlorite altered sediments with varying amounts of pyrrhotite and chalcopryrite (copper sulphide) including 2m (104 – 106 m) downhole width of massive pyrrhotite and lesser chalcopryrite (Figures 1&2).

Chip samples have been sent for analysis and more detail will follow once assay results are known.

The pyrrhotite-chalcopryrite mineralisation and intense chlorite alteration is consistent with a Cobar Style Deposit. Cobar is in western NSW and known for its high grade polymetallic deposits. The largest of these is the CSA mine which produces more than 185,000 tonnes of copper concentrate per annum and has produced more than a million tonnes of copper since 1964.

The Managing Director of TLU, Mr Carl Dorsch said, *"The results at Byrne's Creek continue to demonstrate the underlying value of our hard rock portfolio. The results also justify the Company's decision to drill and explain the soil anomalies whilst also demonstrating the presence of a prospective structure deserving of further work."*

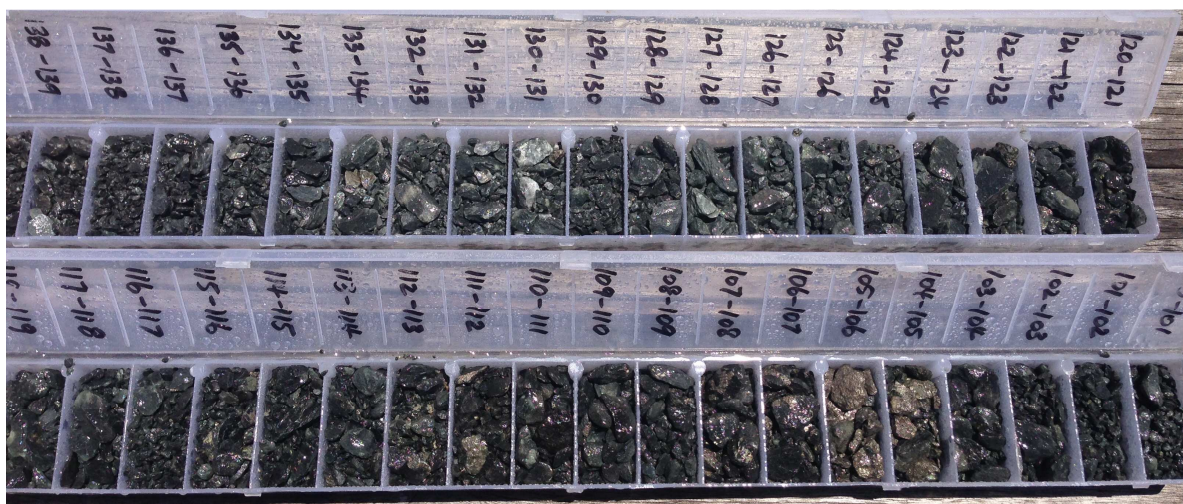
Hole_ID	MGA_East	MGA_North	RL	Total Depth	Azimuth	Dip
BCRC001	725990	6254222	911	99	94.5	-60
BCRC002	726196	6254468	885	159	294.5	-60

**Table 1 - RC Drillhole Locations**

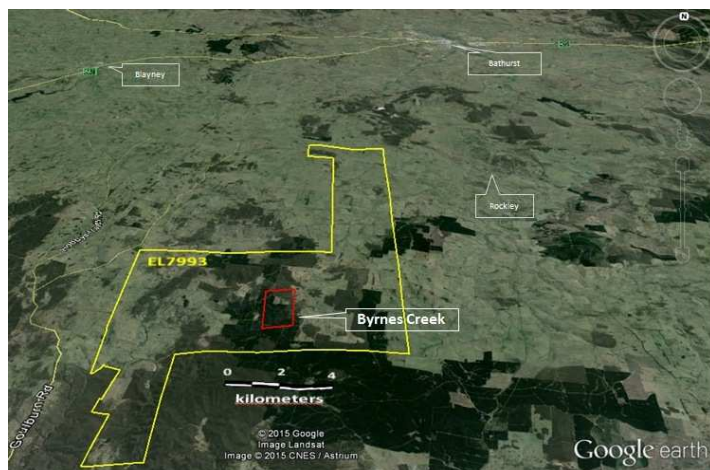


**Figure 1 – RC drill chips from hole BCRC002.**

(each tray represents one meter downhole width)



**Figure 2 – BCRC002 Hole Chips : 100 – 140m**



**Figure 3 – Byrnes Creek Prospect within EL7993**