



To	Company Announcements Office	Facsimile	1300 135 638
Company	ASX Limited	Date	22 January 2015
From	Marta Kielich	Pages	8
Subject	CEN Monthly Operational Data December 2014		

Attached herewith is a copy of an announcement released to the NZX by Contact Energy today.

Origin Energy holds 53.09% of quoted ordinary shares in Contact Energy Limited.

Regards

Marta Kielich
Company Secretary

02 8345 5000 - marta.kielich@originenergy.com.au



Monthly Operational Data

For the month ended 31 December 2014



Highlights for December 2014

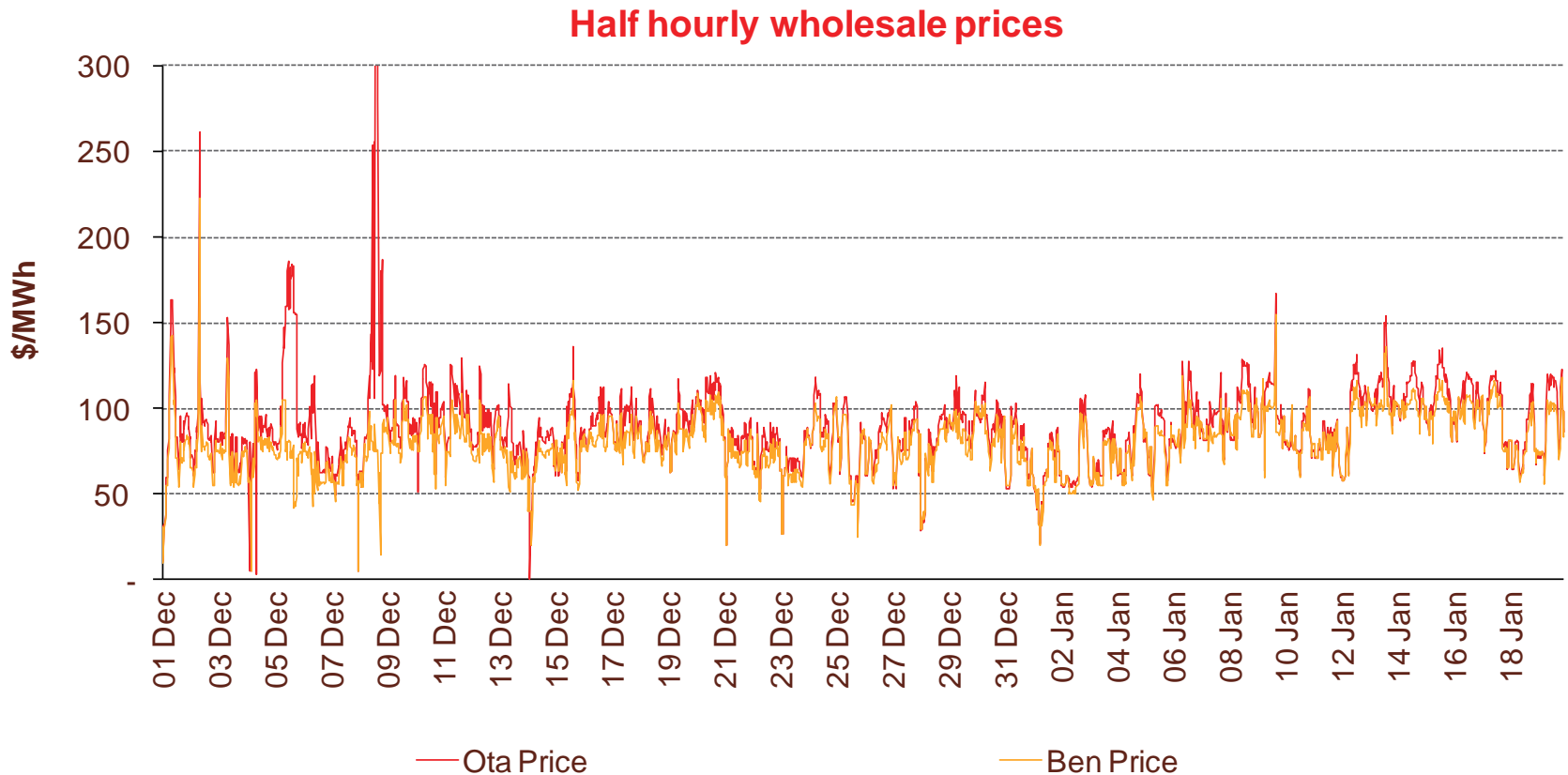
- **Hydro storage as at 31 December: South Island 91% of mean, North Island 108% of mean (p4)**
- **Average Otahuhu wholesale price for December 2014: \$88/MWh (p3)**
- **Otahuhu futures settlement wholesale price for 1st quarter 2015 (ASX) (p4):**
 - As at 21 January: \$91/MWh
 - As at 31 December: \$76/MWh
 - As at 28 November: \$71/MWh

Wholesale electricity prices

3

December 2014

- The average price at Otahuhu (North Island) for December 2014 was \$88/MWh while the average price at Benmore (South Island) was \$77/MWh.



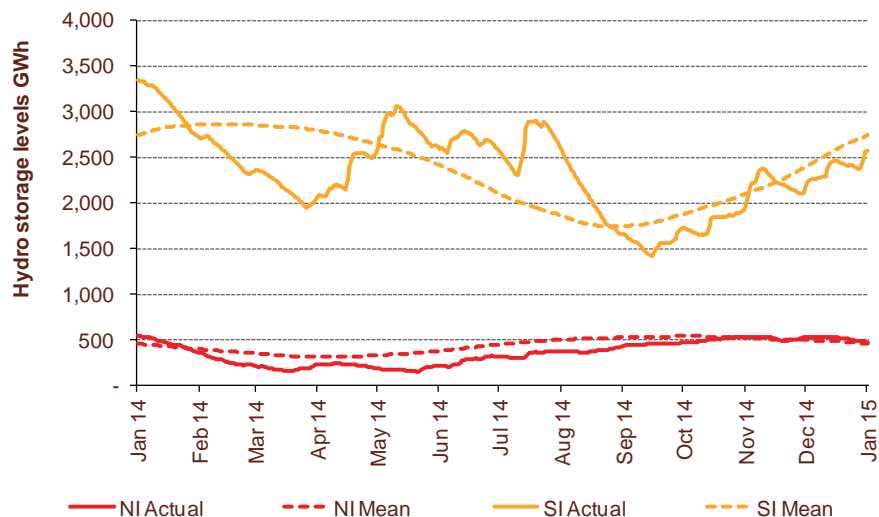
Storage levels and wholesale electricity prices

4

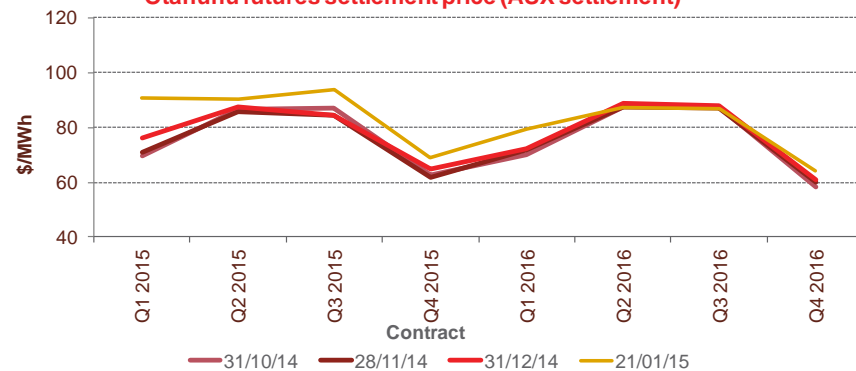
December 2014

- At 31 December, South Island storage was 91% of mean (30 November: 109%) and North Island storage was 108% of mean (30 November: 104%)
- As at 21 January 2015, storage was:
 - South Island: 94% of mean
 - North Island: 102% of mean

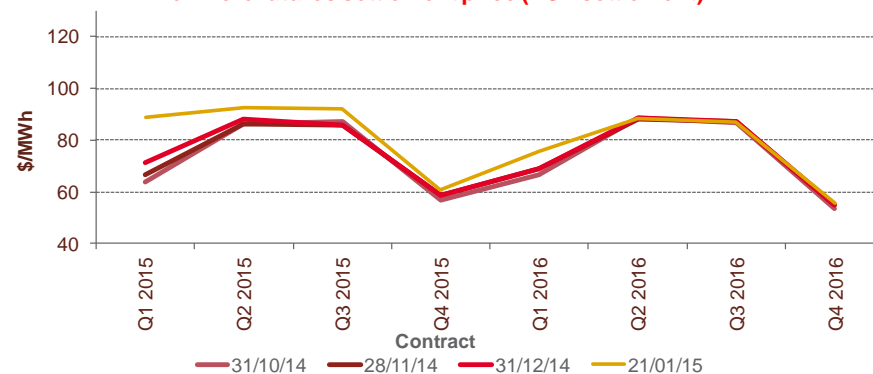
Hydro storage



Otago futures settlement price (ASX settlement)



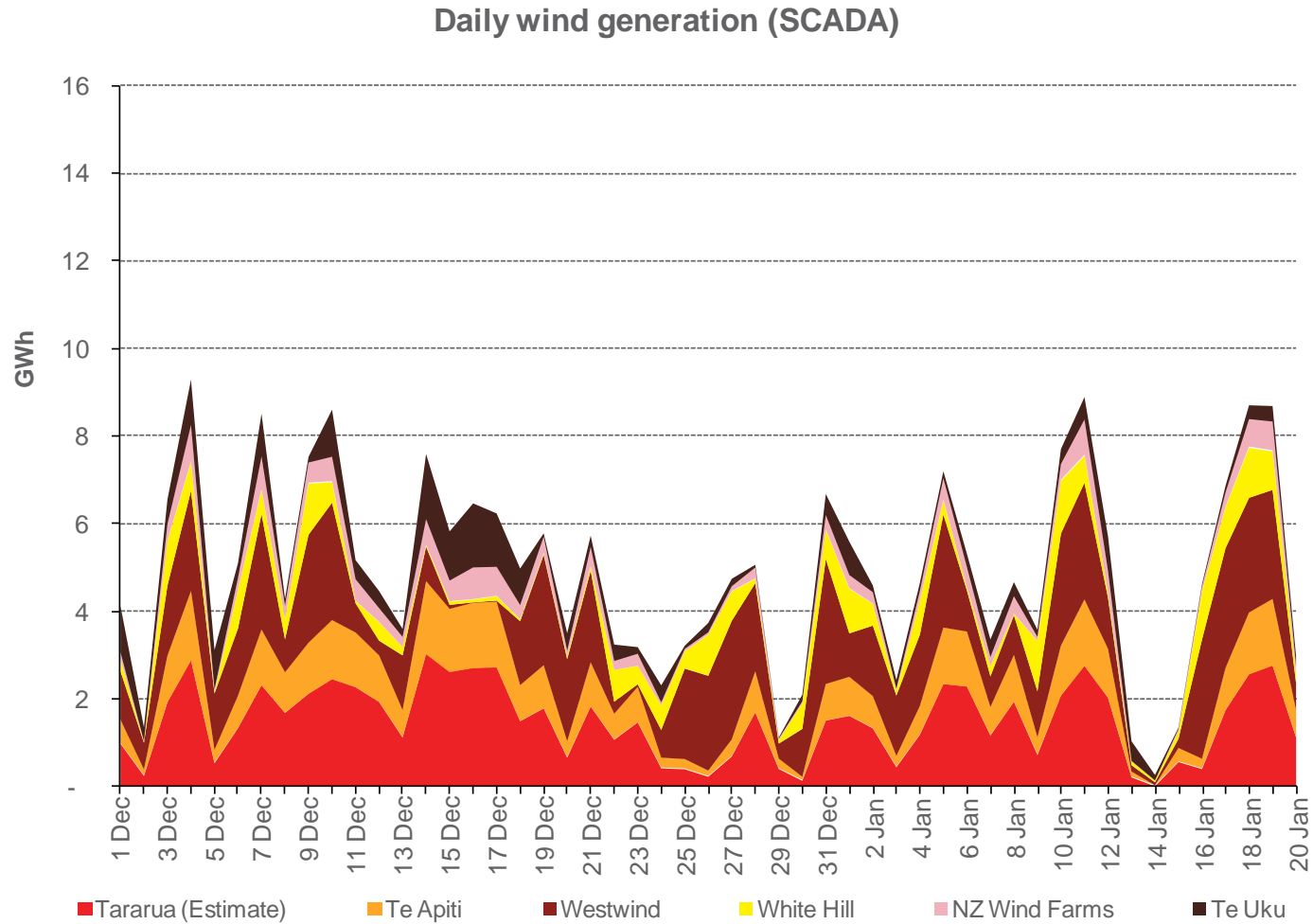
Benmore futures settlement price (ASX settlement)



Wind generation

5

December 2014



Monthly demand comparison

6

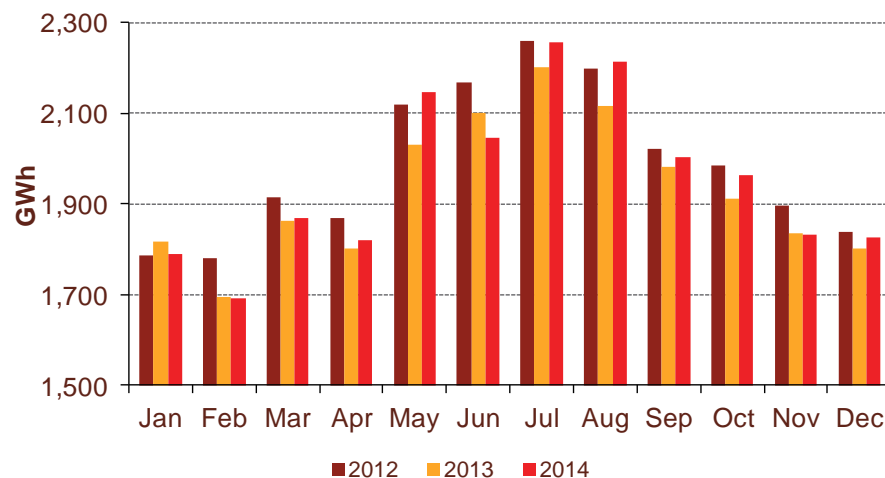
December 2014

- NIWA's national climate summary for December 2014 reports:

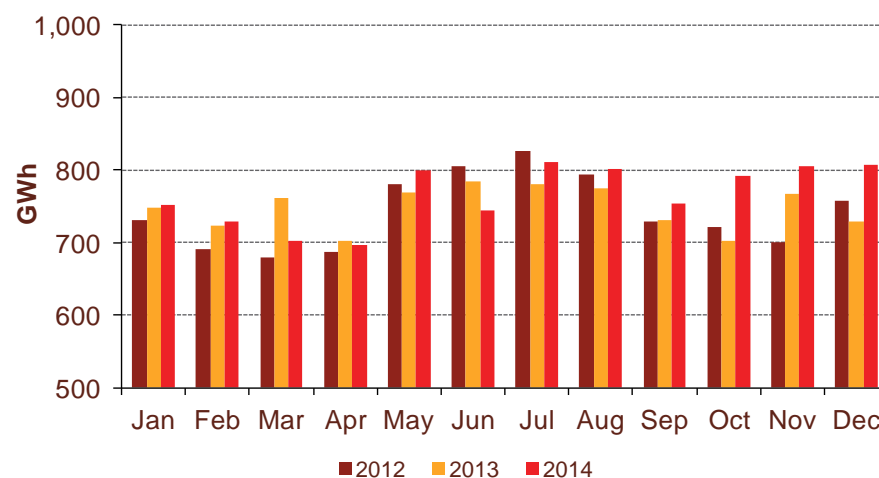
- The New Zealand national average temperature in December was 16.1°C (0.5°C above the 1971-2000 average) and 0.5°C below December 2013

Demand	December demand GWh			Growth rate % p.a.		12 months to date GWh			Growth rate % p.a.	
	2014	2013	2012	1 year	2 year	2014	2013	2012	1 year	2 year
North Island	1,826	1,801	1,838	1.4%	(0.3%)	23,461	23,154	23,835	1.3%	(0.8%)
South Island excluding Tiwai	808	729	757	10.8%	3.3%	9,196	8,975	8,899	2.5%	1.7%
Total	2,634	2,530	2,595	4.1%	0.7%	32,656	32,128	32,734	1.6%	(0.1%)

North Island



South Island excluding Tiwai



Contact Netback, Cost of Energy and LPG Data

7

December 2014

Data		Measure	The month ended December 2014	The month ended December 2013	The month ended November 2014	Six months ended December 2014	Six months ended December 2013
Netback	Mass market electricity sales	GWh	288	273	295	2,067	2,029
	Commercial & industrial electricity sales	GWh	381	389	380	2,250	2,303
	Retail gas sales	GWh	37	33	46	367	357
	Steam sales	GWh	67	66	68	376	356
	Total retail sales	GWh	773	761	789	5,060	5,045
	Average electricity sales price	\$/MWh	165.57	164.95	162.30	180.56	178.92
	Electricity direct pass through costs	\$/MWh	(71.03)	(67.27)	(72.47)	(75.58)	(70.01)
	Electricity and gas cost to serve	\$/MWh	(8.12)	(11.41)	(15.19)	(12.07)	(11.46)
	Netback	\$/MWh	79.90	80.25	69.21	83.90	87.83
	Electricity line losses	%	2%	4%	5%	6%	3%
	Retail gas sales	PJ	0.1	0.1	0.1	1.2	1.3
	Electricity customer numbers ¹	#	432,000	438,500	433,500		
	Gas customer numbers ¹	#	61,500	63,000	61,500		
Cost of energy	Thermal generation	GWh	82	57	230	1,166	1,522
	Geothermal generation	GWh	293	167	213	1,479	1,087
	Hydro generation	GWh	373	348	373	2,168	2,129
	Spot market generation	GWh	748	572	815	4,812	4,738
	Spot electricity purchases	GWh	673	680	698	4,519	4,433
	CfD sales	GWh	(4)	(198)	13	25	(55)
	GWAP	\$/MWh	80.85	43.88	70.51	66.32	47.12
	LWAP	\$/MWh	(88.81)	(55.02)	(76.29)	(71.71)	(52.47)
	LWAP/GWAP	%	110%	125%	108%	108%	111%
	Gas used in internal generation	PJ	1.1	0.8	2.1	10.9	13.4
	Wholesale gas sales	PJ	0.3	0.3	0.3	1.3	1.4
	Gas storage net movement	PJ	(0.2)	0.0	(0.2)	(0.1)	1.7
	Unit generation cost	\$/MWh	(31.42)	(32.44)	(41.37)	(38.67)	(41.49)
	Net purchase cost	\$/MWh	(25.94)	(41.53)	(38.03)	(37.13)	(39.65)
	LPG	LPG sales	tonnes	6,059	4,964	5,142	37,440
LPG customer numbers (includes franchises) ¹		#	68,000	66,000	68,000		

¹ Data has been rounded to the nearest 500 and reflects numbers as at month end.