



SOVEREIGN GOLD COMPANY LIMITED

Sovereign Gold Company Limited
ACN 145 184 667

Level 2, 131 Macquarie Street
Sydney NSW 2000
Tel: +61 2 9251 7177
Fax: +61 2 9251 7500

Contact
Simon Bird MD

email: corporate@sovereigngold.com.au

Latest News
www.sovereigngold.com.au

Directors / Officers

John Dawkins AO
Simon Bird
Michael Leu
Bruce Dennis
Jacob Rebek

ASX Symbol: SOC

Qualifying Statements

The information in this Report that relates to Exploration Information is based on information compiled by Michael Leu who is a member of the Australasian Institute of Mining and Metallurgy and the Australian Institute of Geoscientists.

Mr Leu is a qualified geologist and is a director of Sovereign Gold Company Limited.

Mr Leu has sufficient experience, which is relevant to the style of mineralisation and type of deposit under consideration and to the activity, which he is undertaking to qualify as a Competent Person as defined in the 2012 Edition of the Australasian Code for Reporting of Exploration Results, Mineral Resources and Ore Reserves. Mr Leu consents to the inclusion in this announcement of the Exploration Information in the form and context in which it appears.

References to Mines refer to historical mines and geographical names, no inference should be made that Sovereign Gold is operating any mines at this stage of its development.

ASX Release
5 March 2015

Soil samples assayed prior to drilling campaign

- 8.2 square kilometre geochemical soil survey completed
- 3,832 soil samples collected
- Samples forwarded for analysis
- Principal objective is to discover potential concealed large scale gold mineralisation
- A further key objective is to delineate structures that have acted as conduits (plumbing) for gold-bearing fluids to define with higher precision the drill targets planned for the fully funded Cooperative Drilling Program

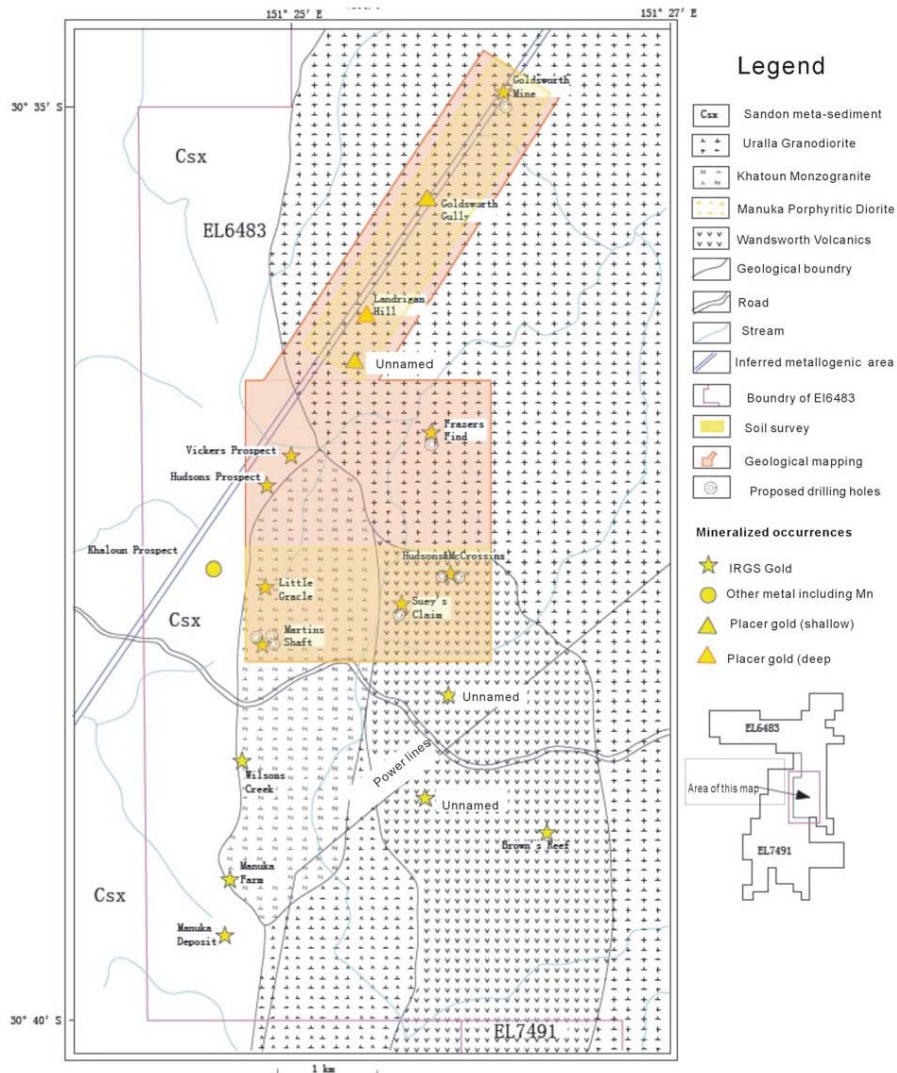
8.2 square kilometres of a 1:10,000 geochemical soil survey has been completed. A total of 3,832 soil samples (including 121 duplicates, collected every 20 metres along 100 metre line spacings) were delivered to Australian Laboratory Services for gold and multi-elements assays including silver, lead, zinc, antimony, bismuth and copper. In addition, a 1:10,000 geological mapping and rock sampling program has been completed (12km²). This activity forms part of SOC's ongoing core R&D activity of the development, enhancement and modifications to IRGS (Intrusion-Related Gold Systems) methodology.

The geochemical soil survey and geological mapping were undertaken in EL 6483 and encompassed most historical gold workings including Sueys Claim, Hudson McCrossins, Diggers Shaft, Frasers Find, Martins Shaft, the Gracie and Little Gracie Mines, Vickers Shaft, the Old Bonanza Dyke (NE trending magnetic linear hosting several historic gold mines) and the Goldsworth Mine. The principal objective is to discover potential large-scale gold mineralisation deeply concealed in this area.

The processed data will identify key targets and form the basis of designing a drilling program in addition to the holes approved for the Cooperative Drilling Program funding of \$65,000 granted by the NSW Government with the balance to be funded by SUGEC. The Cooperative Drilling funding grant is to test a potential gold bearing concealed circular pluton and associated structures indicated by Sovereign's airborne geophysical survey.

For further information please contact:

Investor Relations, Henry Kinstlinger
Sovereign Gold Company Limited
Telephone: +61 2 9251 7177



Map of Soil Survey Area