



To	Company Announcements Office	Facsimile	1300 135 638
Company	ASX Limited	Date	25 May 2015
From	Helen Hardy	Pages	8
Subject	CEN Monthly Operational Data April 2015		

Attached herewith is a copy of an announcement released to the NZX by Contact Energy today.

Origin Energy holds 53.09% of quoted ordinary shares in Contact Energy Limited.

Regards

Helen Hardy
Company Secretary

02 8345 5000 – helen.hardy@originenergy.com.au



Monthly Operational Data

For the month ended 30 April 2015



Highlights for April 2015

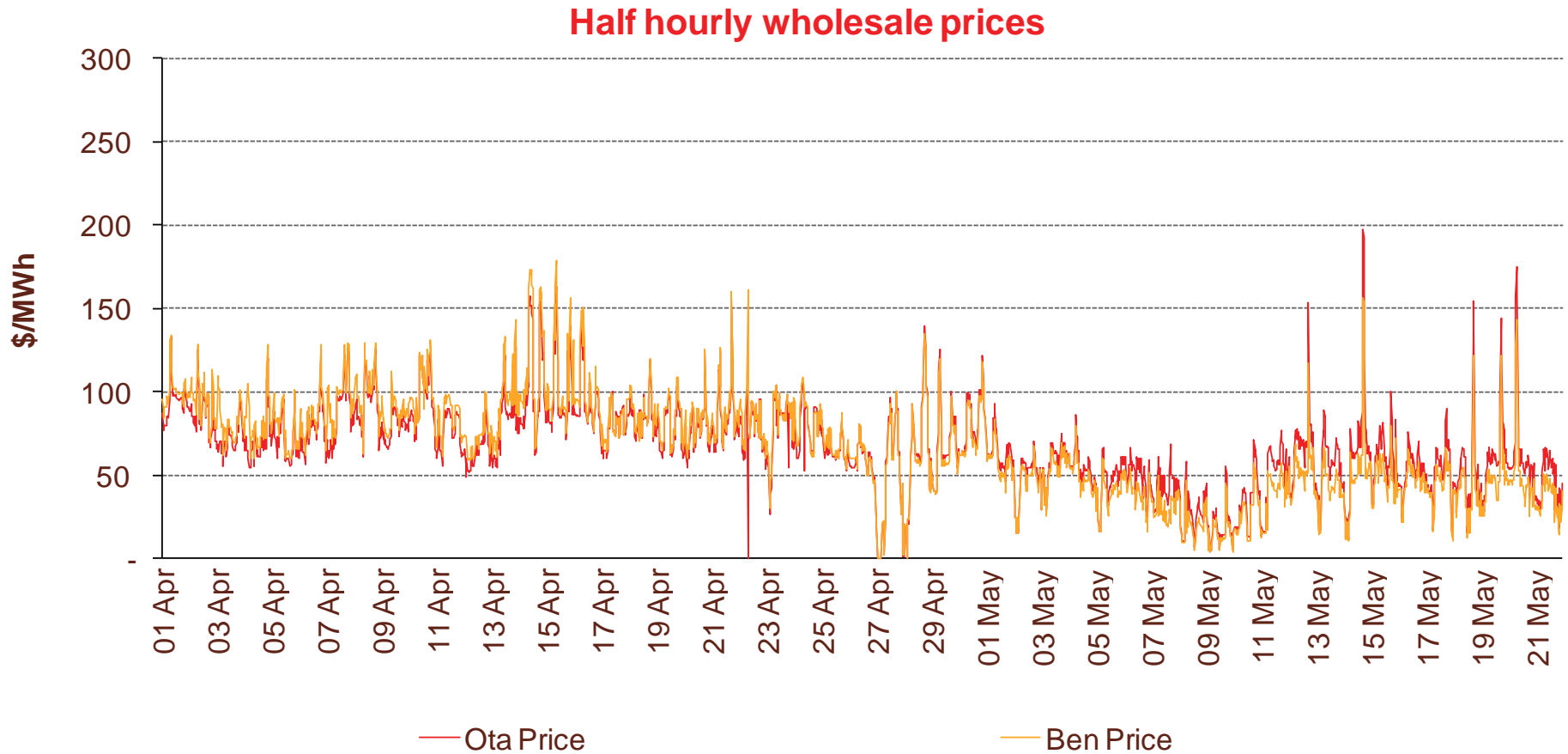
- **Hydro storage as at 30 April: South Island 76% of mean, North Island 88% of mean (p4)**
- **Average Otahuhu wholesale price for April 2015: \$79/MWh (p3)**
- **Otahuhu futures settlement wholesale price for 2nd quarter 2015 (ASX) (p4):**
 - As at 22 May: \$63/MWh
 - As at 30 April: \$72/MWh
 - As at 31 March: \$89/MWh

Wholesale electricity prices

3

April 2015

- The average price at Otahuhu (North Island) for April 2015 was \$79/MWh while the average price at Benmore (South Island) was \$84/MWh.



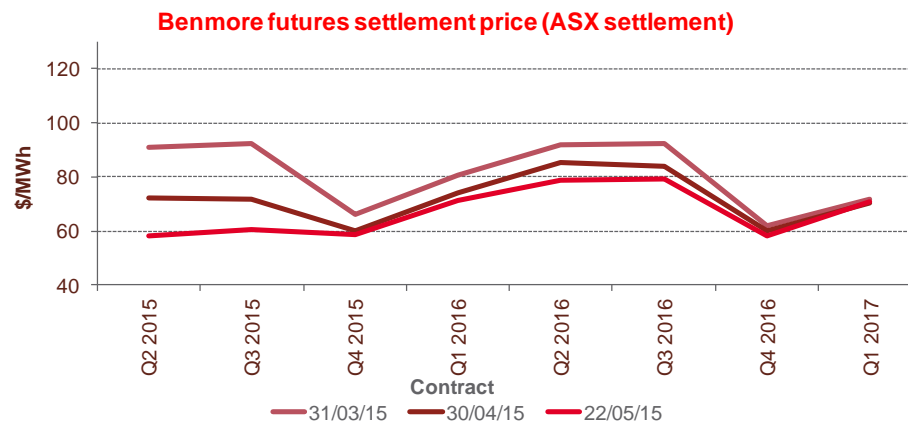
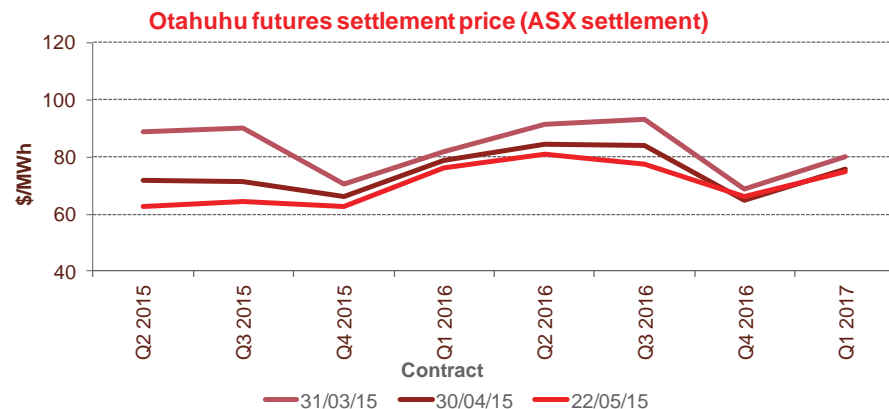
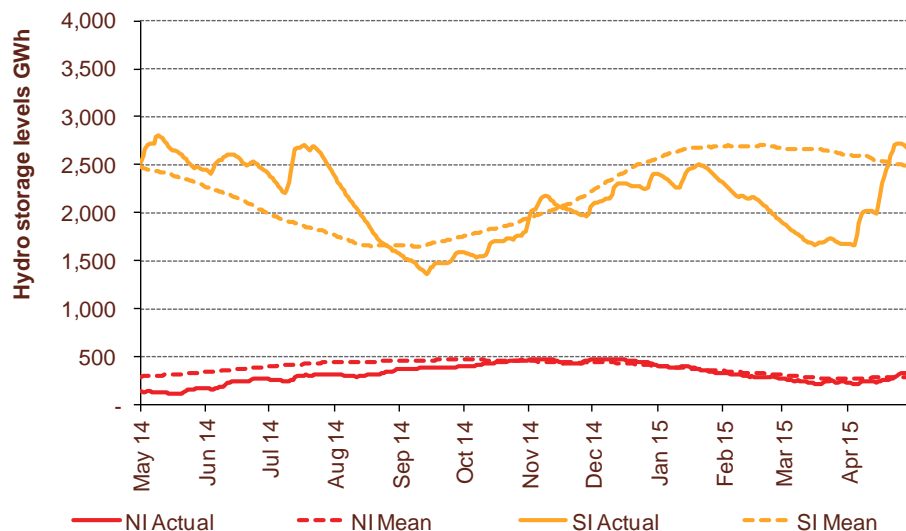
Storage levels and wholesale electricity prices

4

April 2015

- At 30 April, South Island storage was 76% of mean (31 March: 65%) and North Island storage was 88% of mean (31 March: 83%)
- As at 22 May 2015, storage was:
 - South Island: 106% of mean
 - North Island: 113% of mean

Hydro storage

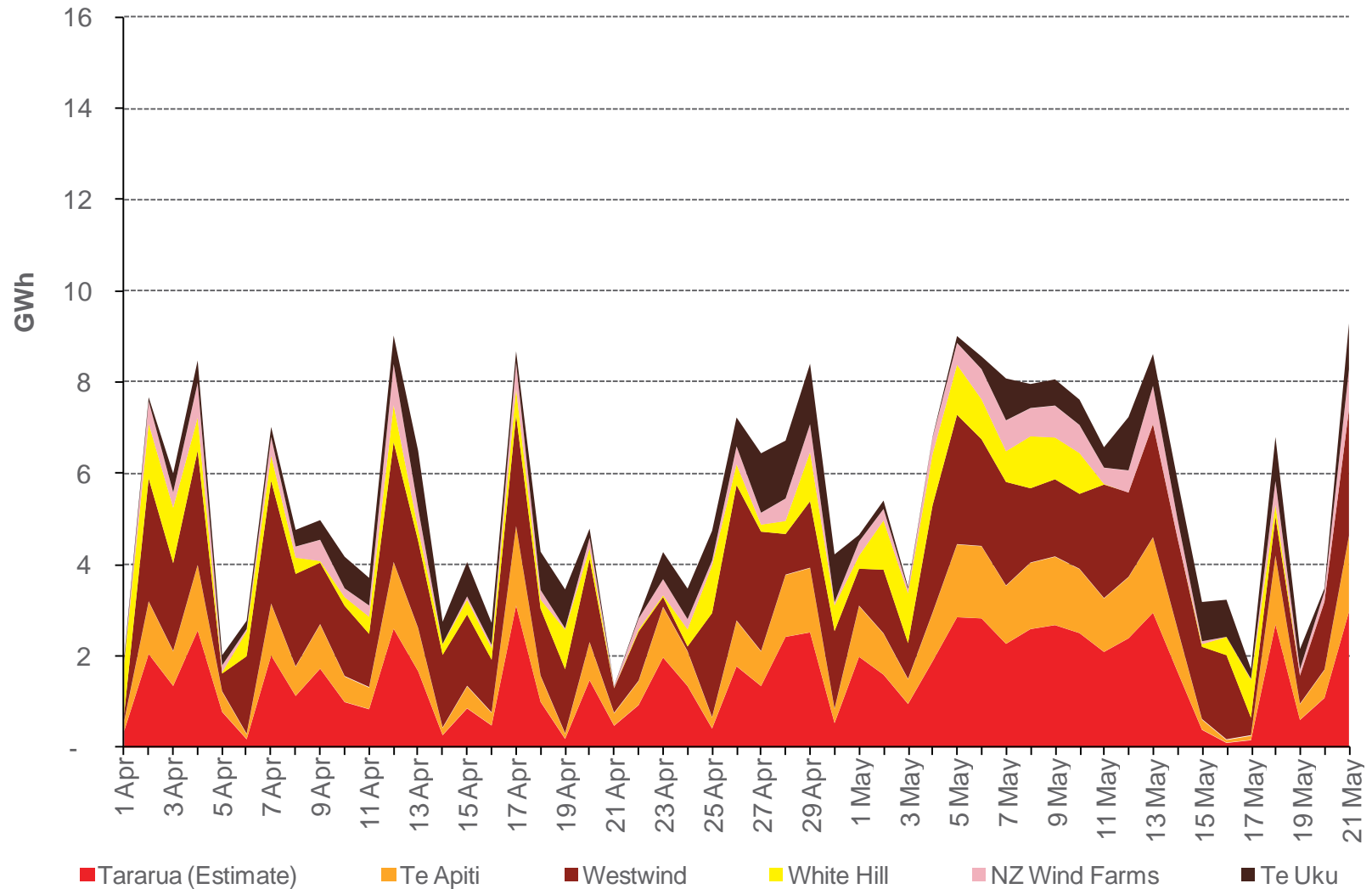


Wind generation

5

April 2015

Daily wind generation (SCADA)



Monthly demand comparison

6

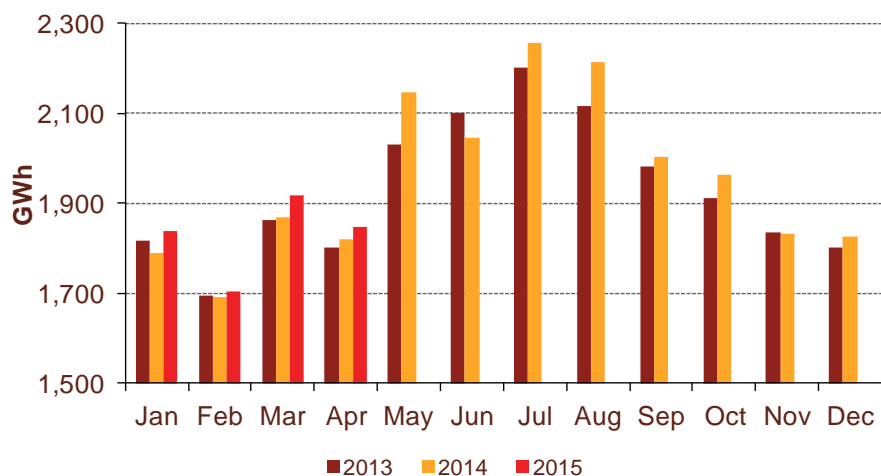
April 2015

- NIWA's national climate summary for April 2015 reports:

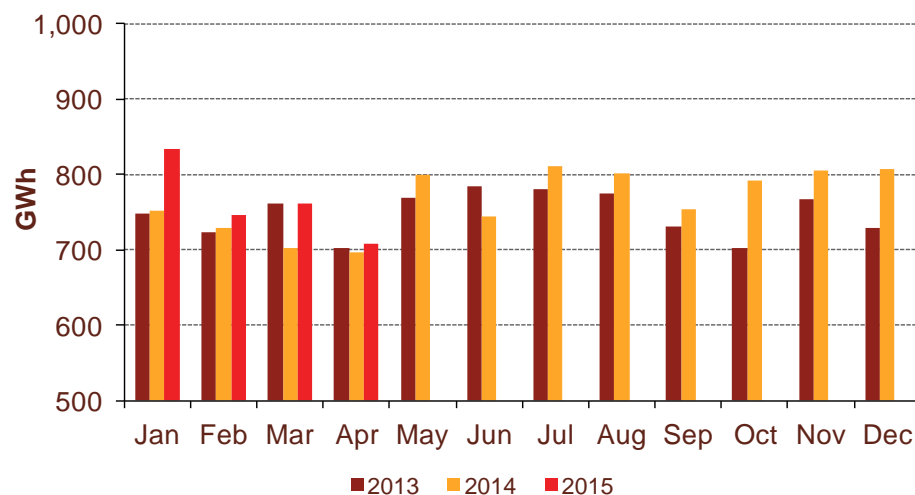
- The New Zealand national average temperature in April was 14.1°C (0.9°C above the 1981-2010 average)

Demand	April demand GWh			Growth rate % p.a.		12 months to date GWh			Growth rate % p.a.	
	2015	2014	2013	1 year	2 year	2015	2014	2013	1 year	2 year
North Island	1,849	1,821	1,800	1.5%	1.3%	23,595	23,152	23,657	1.9%	(0.1%)
South Island excluding Tiwai	708	697	702	1.5%	0.4%	9,364	8,921	9,047	5.0%	1.7%
Total	2,556	2,519	2,502	1.5%	1.1%	32,959	32,072	32,704	2.8%	0.4%

North Island



South Island excluding Tiwai



Contact Netback, Cost of Energy and LPG Data

7

April 2015

Data		Measure	The month ended April 2015	The month ended April 2014	The month ended March 2015	Ten months ended April 2015	Ten months ended April 2014
Netback	Mass market electricity sales	GWh	296	304	282	3,161	3,152
	Commercial & industrial electricity sales	GWh	370	355	412	3,792	3,802
	Retail gas sales	GWh	40	41	32	493	491
	Steam sales	GWh	59	39	57	611	572
	Total retail sales	GWh	765	739	784	8,056	8,017
	Average electricity sales price	\$/MWh	182.75	188.46	170.64	177.44	178.08
	Electricity direct pass through costs	\$/MWh	(73.91)	(75.71)	(68.47)	(73.71)	(69.36)
	Electricity and gas cost to serve	\$/MWh	(14.85)	(11.01)	(14.67)	(13.20)	(11.54)
	Netback	\$/MWh	85.98	95.00	81.94	82.63	88.55
	Electricity line losses	%	11%	4%	7%	6%	4%
	Retail gas sales	PJ	0.1	0.1	0.1	1.7	1.8
	Electricity customer numbers ¹	#	433,000	440,000	433,000		
	Gas customer numbers ¹	#	61,500	63,000	61,500		
Cost of energy	Thermal generation	GWh	321	376	306	1,997	2,539
	Geothermal generation	GWh	273	169	254	2,529	1,816
	Hydro generation	GWh	235	193	248	3,291	3,241
	Spot market generation	GWh	829	738	809	7,817	7,596
	Spot electricity purchases	GWh	738	682	740	7,317	7,124
	CfD sales	GWh	82	15	36	110	(118)
	GWAP	\$/MWh	81.18	97.26	80.49	74.21	67.08
	LWAP	\$/MWh	(87.67)	(100.21)	(84.69)	(79.99)	(72.80)
	LWAP/GWAP	%	108%	103%	105%	108%	109%
	Gas used in internal generation	PJ	2.7	3.1	2.6	18.7	22.4
	Wholesale gas sales	PJ	0.1	0.1	0.1	1.9	2.1
	Gas storage net movement	PJ	(0.1)	(0.4)	(0.1)	(0.6)	0.5
	Unit generation cost	\$/MWh	(40.71)	(54.54)	(41.20)	(38.51)	(43.48)
	Cost of energy	\$/MWh	(43.26)	(52.80)	(30.30)	(36.69)	(41.46)
LPG	LPG sales	tonnes	5,251	5,521	5,897	60,096	55,636
	LPG customer numbers (includes franchises) ¹	#	69,500	67,000	69,000		

¹ Data has been rounded to the nearest 500 and reflects numbers as at month end.