



ASX: SYA

SAYONA
MINING LIMITED
July 2015

**Sourcing the raw material
of the future**

High carbon purity flake graphite

Company snapshot

ASX: **SYA**

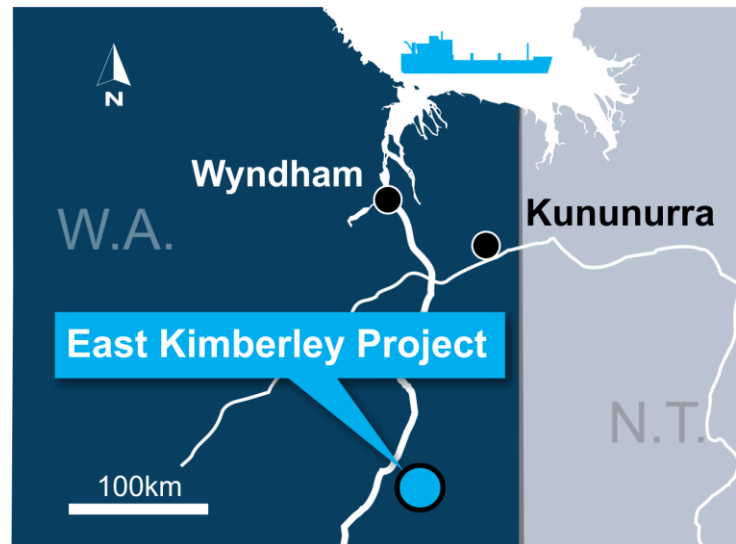
SYA's strategy is to source and **develop high purity flake graphite** for use in the rapidly growing, green technology sectors



**NEW
GROWTH
TECHNOLOGIES**

THE EAST KIMBERLEY GRAPHITE PROJECT

- 278 km² tenement package
- Located in a proven large flake graphite province
- Excellent infrastructure
- Immediate focus on drilling



The project is close to an export port and Asian markets

SYA value proposition

Targeting proven, **large flake, high purity graphite district** – suitable for use in new green technology sectors



Close **proximity to target** technology markets in Asia

Very low enterprise value compared to industry peers



First world country with stable taxes and royalties

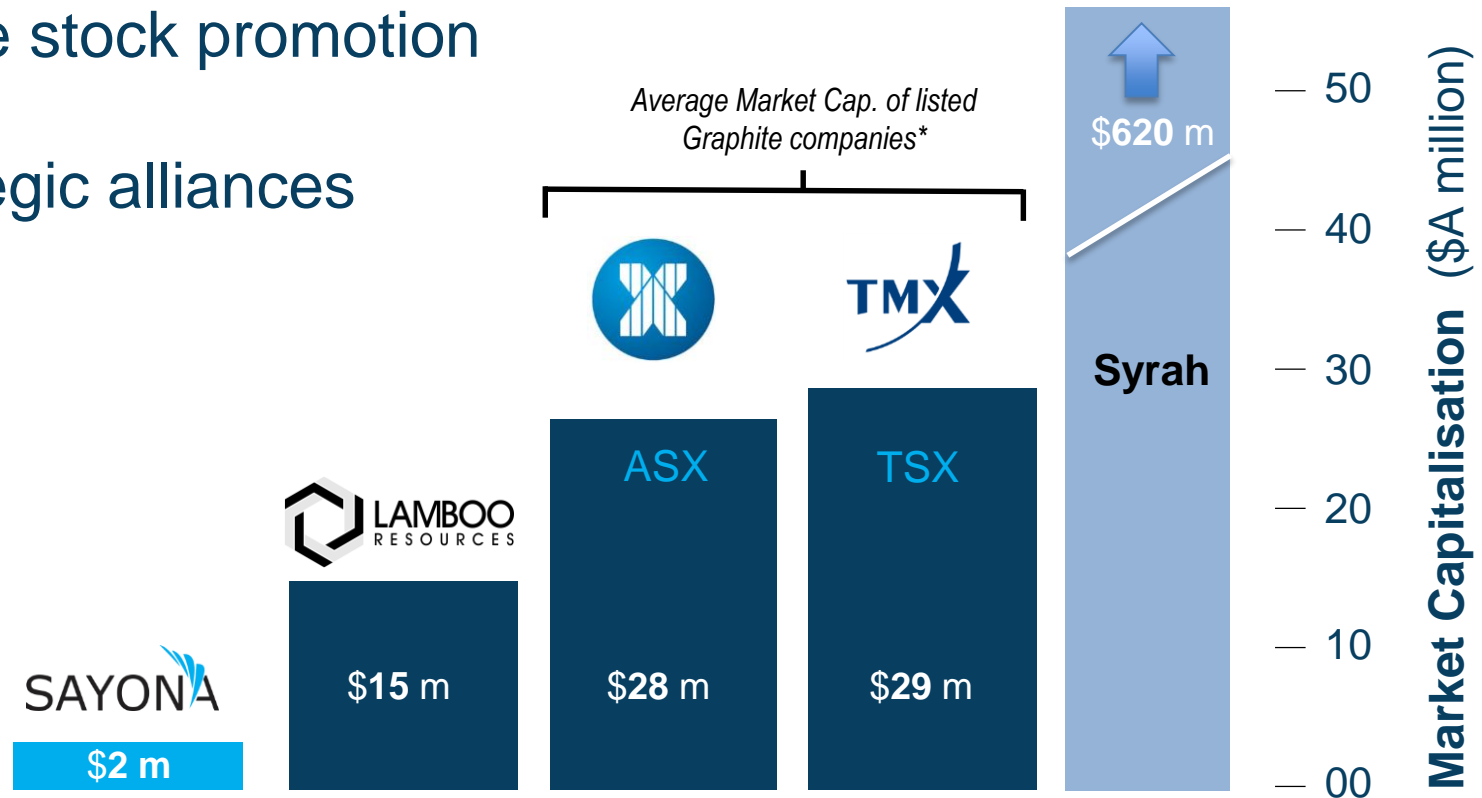
Major shareholders and **Board have strong track** record of successful investments



Well established mining district with **excellent infrastructure** to support low costs

Share price re-rating driven by:

- ✓ Realisation of East Kimberley project potential
- ✓ New acquisition opportunities
- ✓ Active stock promotion
- ✓ Strategic alliances



Graphite ... solution to global problems



Graphite ... solution to global problems



Why Graphite?

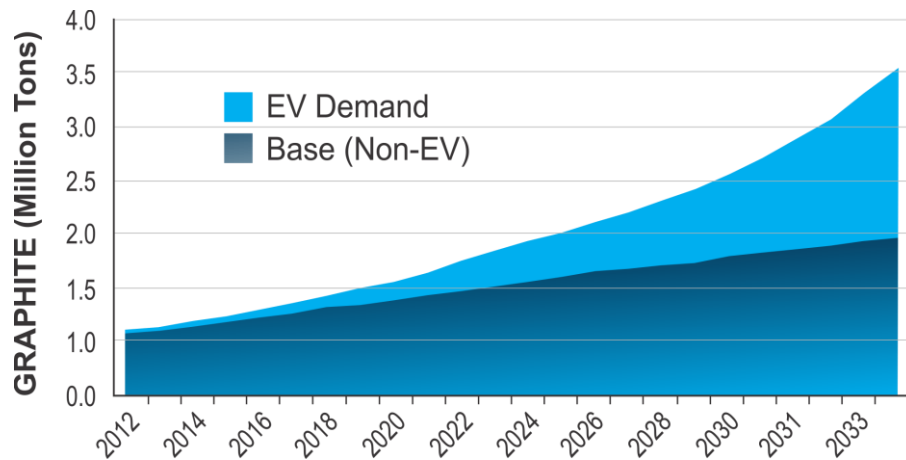
\$12 BILLION GROWING MARKET

FORECAST DEMAND FOR
GRAPHITE IN ELECTRIC
VEHICLES TO INCREASE OVER
10 YEARS

80%



THE BATTERY MEGA
FACTORIES ARE COMING



Graphite – a diverse and critical raw material

GRAPHITE HAS UNIQUE PROPERTIES



Lubricity



Non-corrosive



Light



Heat resistant



Strong

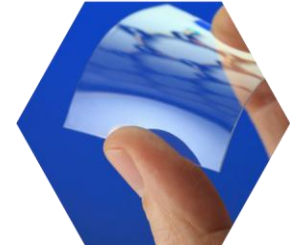


Conductive

GRAPHITE IS EVERYWHERE



Lubricants



New technologies



Refractories



Batteries



Electronics



Applications are growing

Key Graphite growth markets

NEW **GREEN**
TECHNOLOGIES

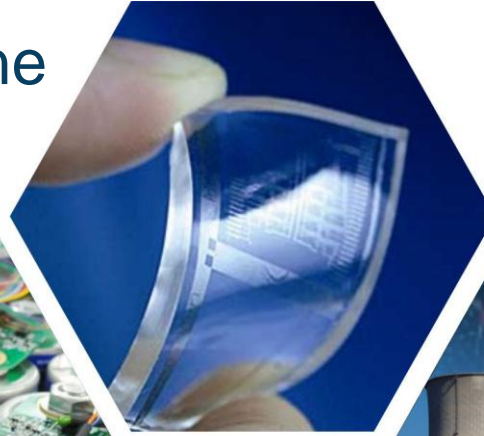


DRIVING
GLOBAL
DEMAND



Lithium Ion
Batteries

Graphene



Pebble Bed
Nuclear Energy



Super-
capacitors

Lithium Ion Battery Market



Electric Vehicles

Battery Mega-Factories

ELECTRIC/HYBRID VEHICLES SALES

157,000



2004

735,000



2010

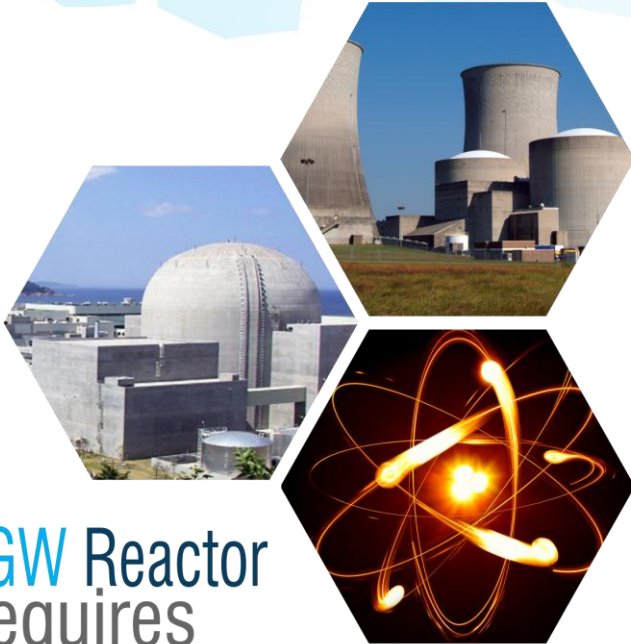
4 MILLION



2020 (proj.)

Li BATTERY MEGA-FACTORY CAPACITY
TO **TRIPLE** BY **2020**

Nuclear Power



1GW Reactor
requires

- 3000t GRAPHITE FOR START UP
- 1000t GRAPHITE TO OPERATE ANNUALLY

Super Capacitors

GRAPHITE IS KEY RAW MATERIAL



- cost effective
- mechanical stability
- huge energy storage

80kg GRAPHITE USED IN
AVERAGE FUEL CELL

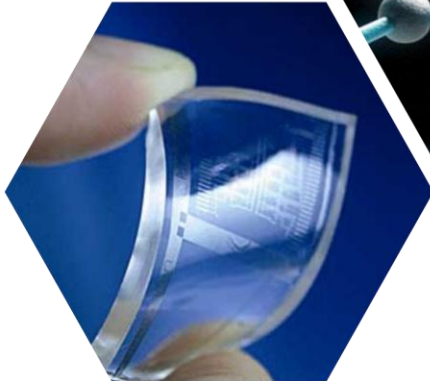
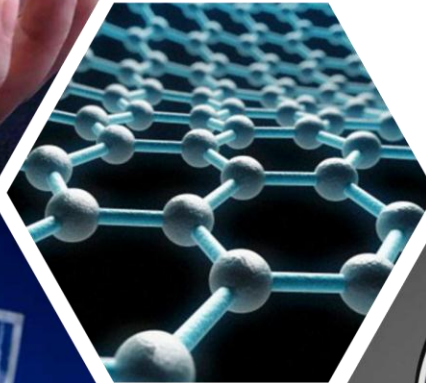
Graphene – the new super material*

1000x ELECTRICAL CURRENT
CAPACITY OF COPPER WIRE

100x STRONGER THAN STEEL

10x BETTER HEAT CONDUCTOR
THAN COPPER

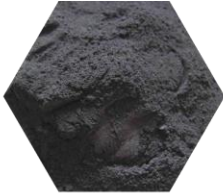
**STRONGEST
MATERIAL
KNOWN TO
MAN**



Flake Graphite – the highest value product

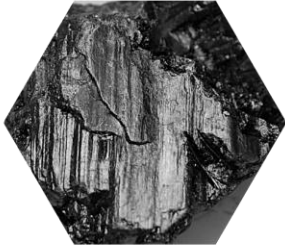
GRAPHITE TYPES

AMORPHOUS

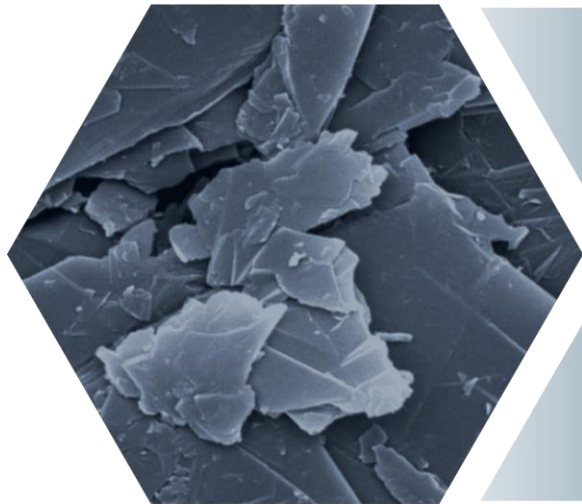


LOW PURITY
LOW PRICE
LOW GROWTH

LUMP



MEDIUM PURITY
LOW MARKET
FLAT GROWTH



FLAKE
GRAPHITE



HIGHEST PURITY



HIGHEST PRICES

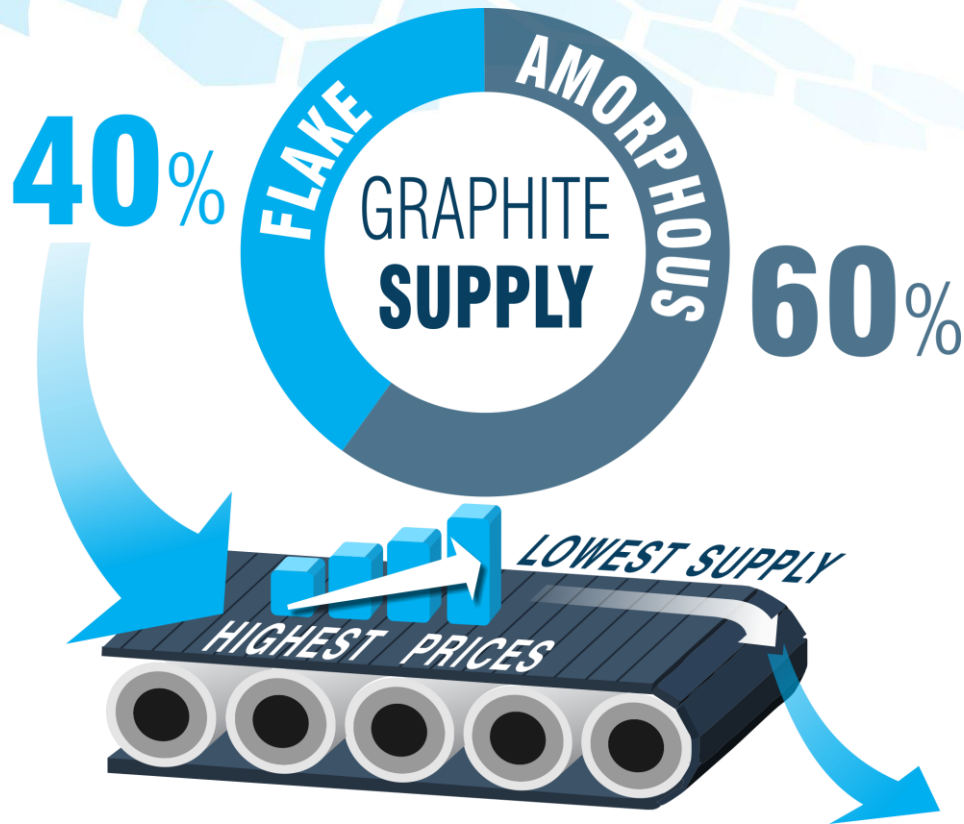


LIMITED SUPPLY

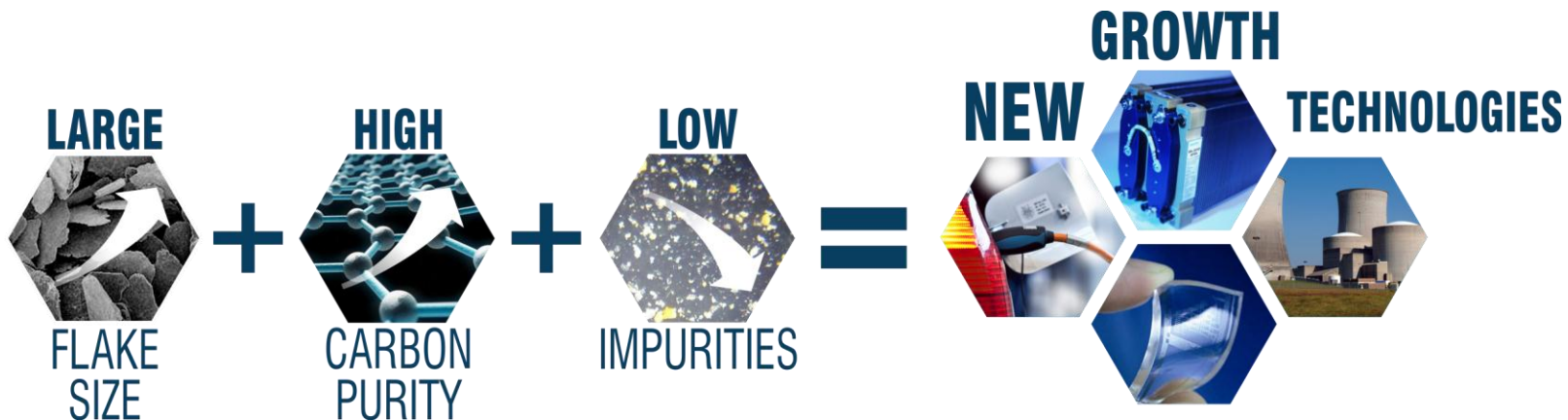
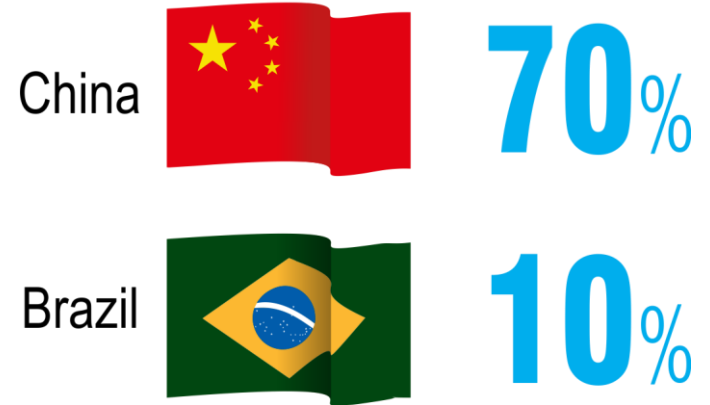


HIGHEST GROWTH
DRIVEN BY NEW TECHNOLOGIES

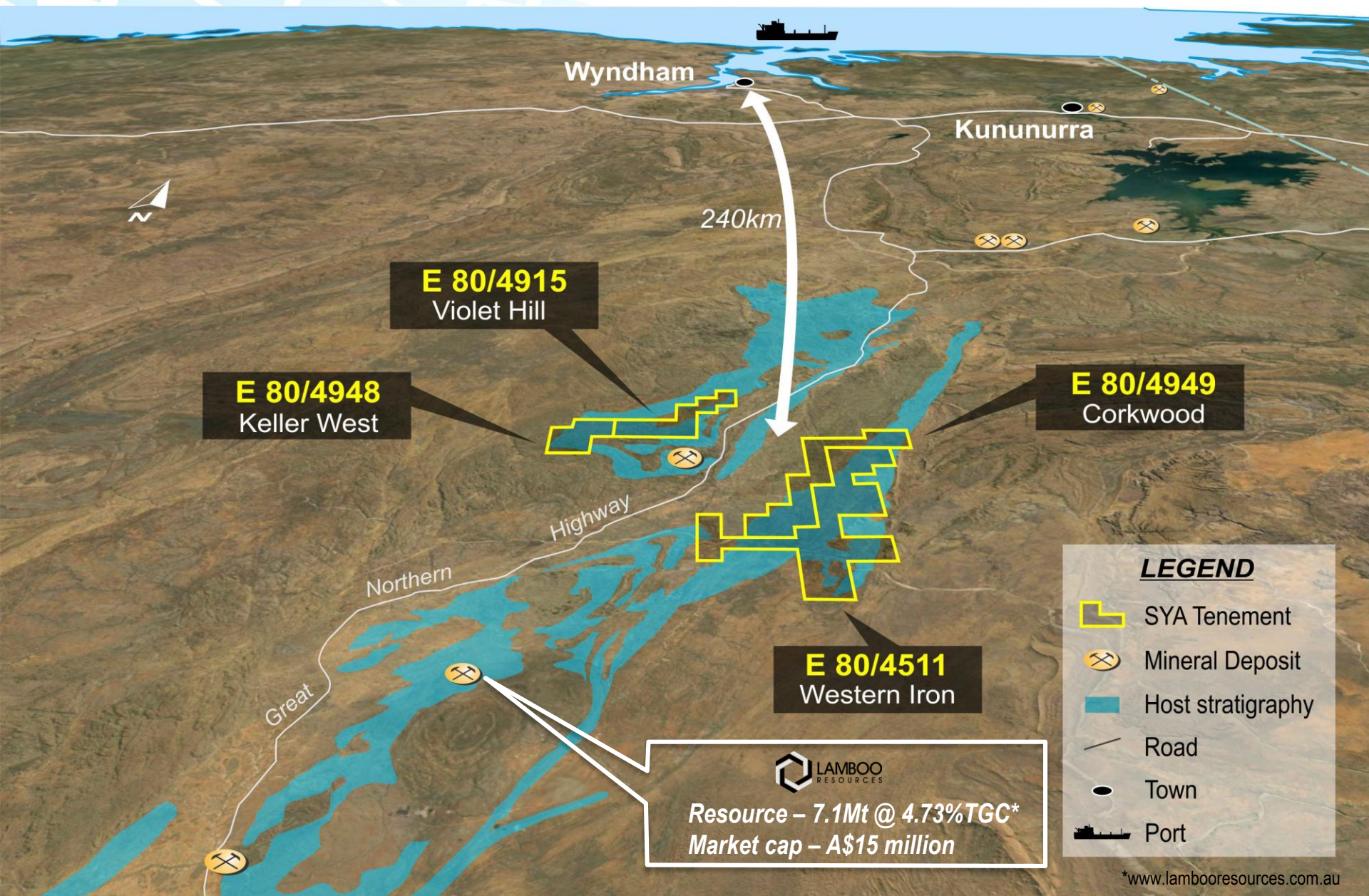
Sayona to target high-growth segments



KEY WORLD SUPPLIERS



East Kimberley project location

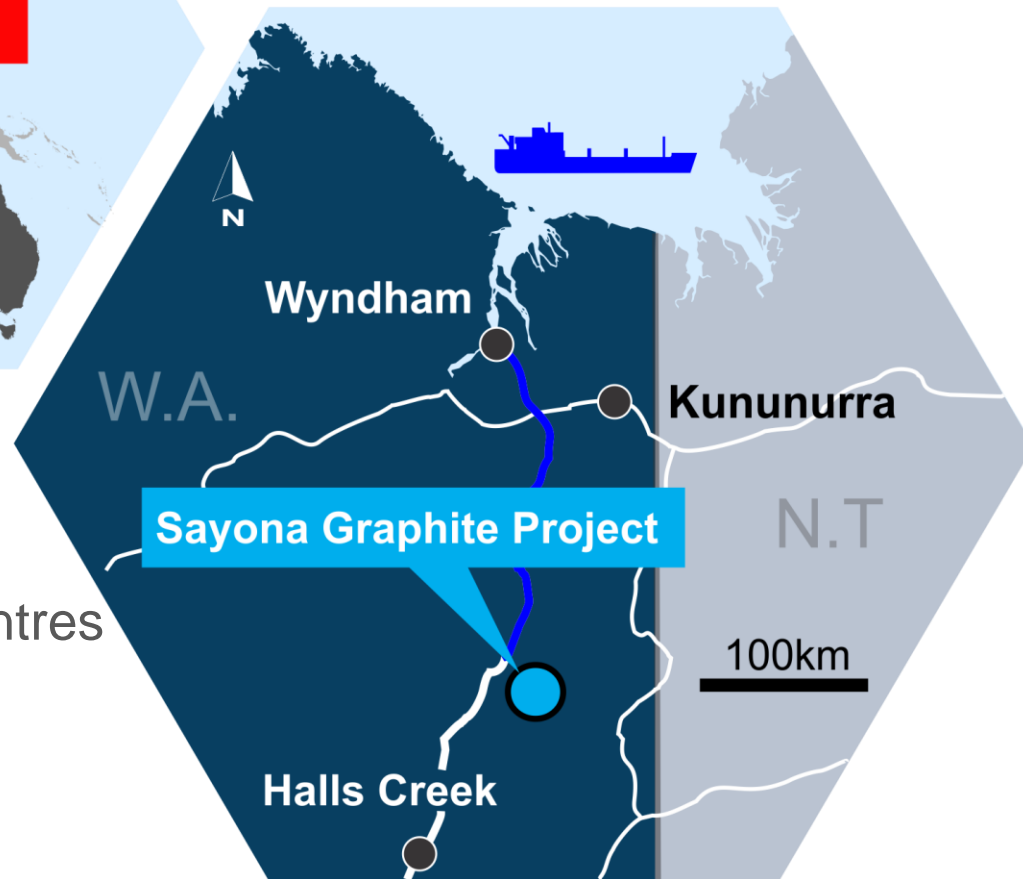


Perfectly placed to supply Asian markets

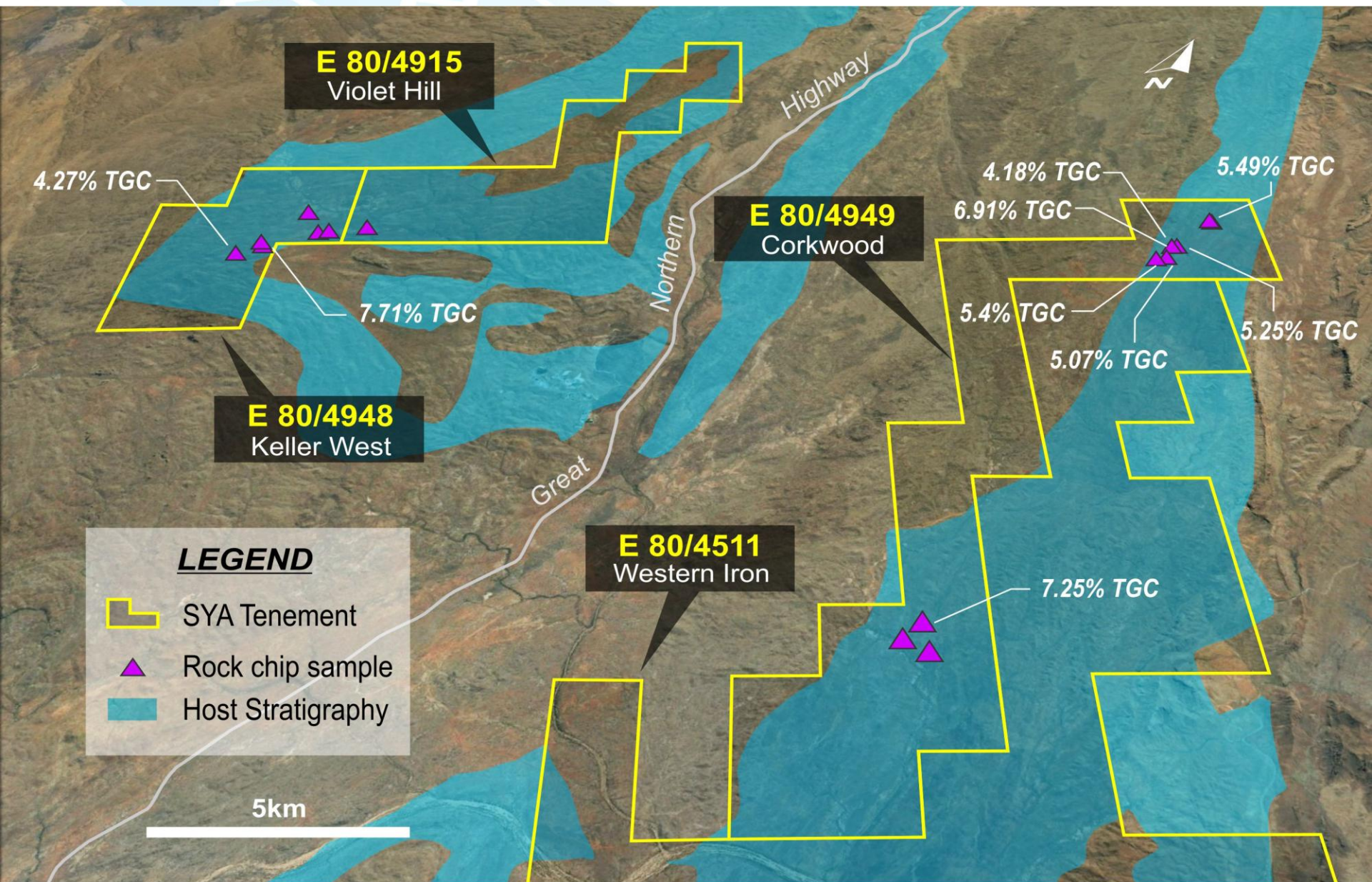


CLOSE TO
ASIAN MARKETS

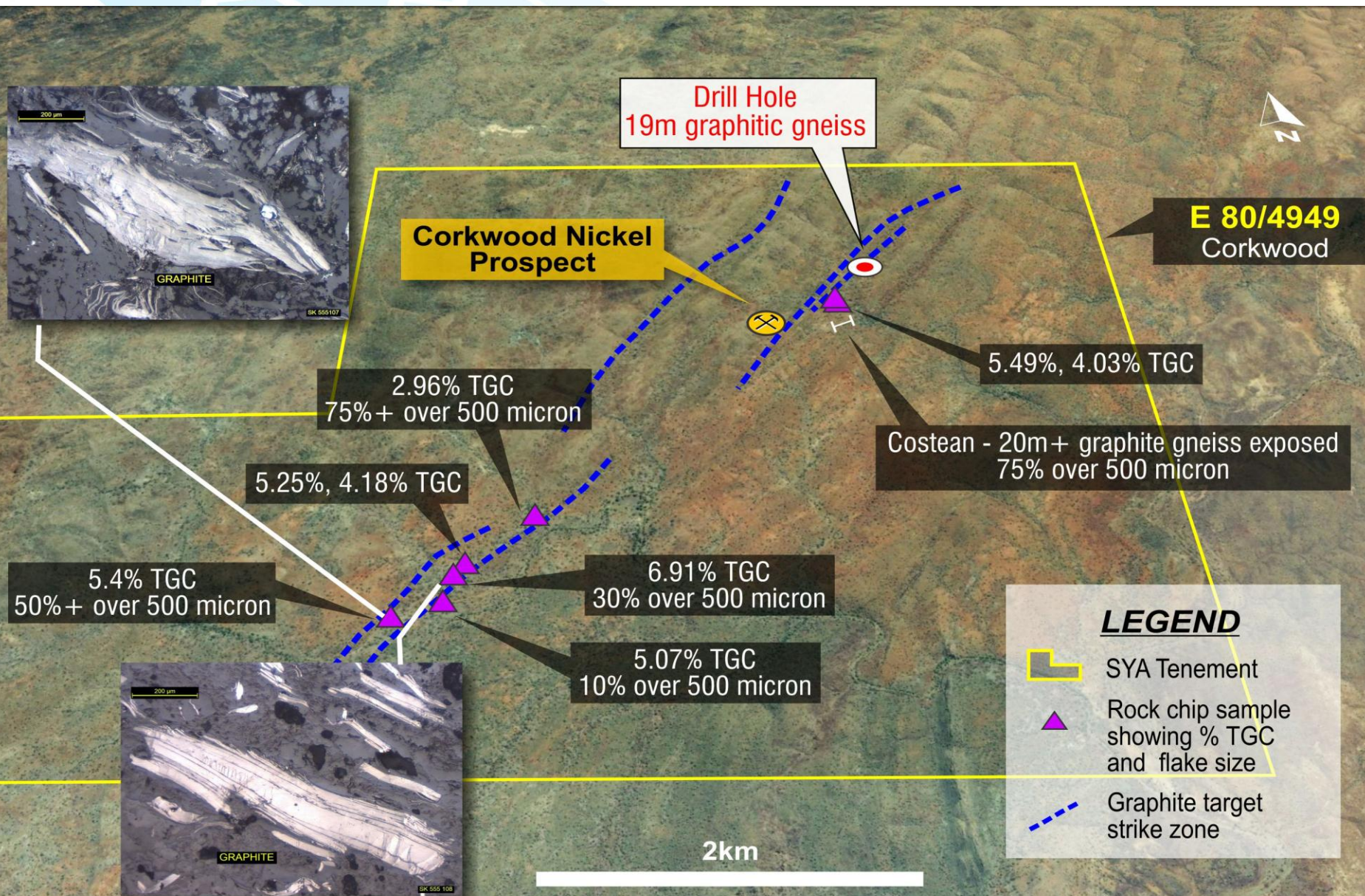
- **240km** from Wyndham Port
- **Regional mining services** centres
- Local **skilled** workforce



A major new graphite discovery



Jumbo and large flake size demonstrated



Geophysics highlights 20km structure

LEGEND

- SYA Tenement
- Airborne EM

E 80/4915

Violet Hill

E 80/4949

Corkwood

E 80/4948

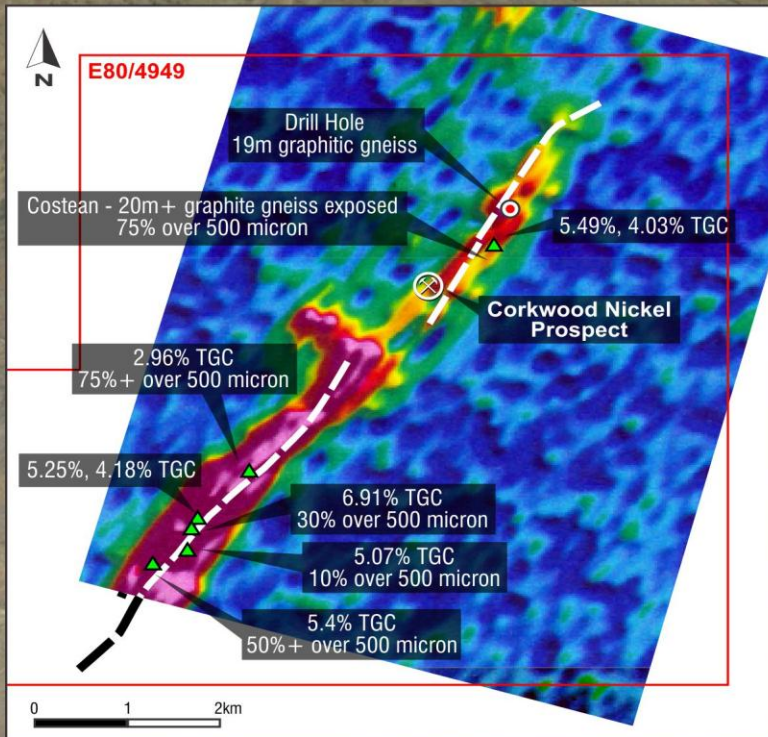
Keller West

E 80/4511

Western Iron

20 kilometres

5km



Immediate focus on delineating drill targets



- ☒ Tenement package secured
 - ☒ Surface mapping & sampling
 - ☒ Flake chemistry analysis
-

- ☐ Native Title / Environmental
- ☐ Geophysics
- ☐ Drilling
- ☐ Metallurgy
- ☐ Off-take partner / agreements
- ☐ JORC

Pursuing value-adding opportunities



Discussions to commence with potential off-take partners



Bolt on value-adding acquisition opportunities



Downstream processing to produce higher value products

Tight, supportive ownership structure

TRADING EXCHANGE

ASX: SYA

CAPITALISATION

Market cap **\$2.0M**

SHARES

411 million
shares

Cash **\$0.6M**

SHAREHOLDERS

DIRECTORS **54%**

TOP 20 **90%**

Strong team with track record of success

Dan O'Neill

Managing Director

- 35 years of resources industry experience
- Geologist with significant project development and public company experience
- Founding director of lithium company, Orocobre Ltd

Corey Nolan

Chief Executive Officer

- 23 years of resources industry experience
- Strong combination of corporate and capital markets experience
- Previously Managing Director of South American focused exploration company, Elementos Limited

Paul Crawford

Executive Director

- 35 years of resources industry experience
- CPA and previously Company Secretary of companies including Orocobre Ltd (founding director), Elementos Ltd and ActivEx Ltd

James Brown

Non-Executive Director

- 35 years of operating experience in the resources sector
- Significant coal development and operating experience including 22 years with New Hope Corporation
- Managing Director of ASX listed lithium development company, Altura Mining Ltd

Allan Buckler

Non-Executive Director

- 40 years of development and operating experience in the resources sector
- Built large-scale mining operations in Australia and Indonesia
- Former director and chief operations officer for New Hope Corporation

Disclaimer

COMPETENT PERSON STATEMENT

The information in this report that relates to Exploration Results is based on information compiled by Mr Simon Attwell, a Competent Person, and who is a Member of The Australasian Institute of Mining and Metallurgy. Mr Attwell is an employee of Attgold Pty Ltd (“Attgold”) which provides geological services to Sayona. Attgold is a financial beneficiary if Sayona exercises its option to purchase agreement over the East Kimberley Graphite project.

Mr Attwell has sufficient experience that is relevant to the style of mineralisation and type of deposit under consideration and to the activity being undertaken to qualify as a Competent Person as defined in the 2012 Edition of the ‘Australasian Code for Reporting of Exploration Results, Mineral Resources and Ore Reserves’. Mr Attwell consents to the inclusion in the report of the matters based on his information in the form and context in which it appears.

FORWARD LOOKING STATEMENTS

This presentation may contain certain forward looking statements. Such statements are only predictions, based on certain assumptions and involve known and unknown risks, uncertainties and other factors, many of which are beyond Sayona Limited’s control. Actual events or results may differ materially from the events or results expected or implied in any forward looking statement. The inclusion of such statements should not be regarded as a representation, warranty or prediction with respect to the accuracy of the underlying assumptions or that any forward looking statements will be or are likely to be fulfilled. Sayona Limited undertakes no obligation to update any forward-looking statement to reflect events or circumstances after the date of this presentation (subject to securities exchange disclosure requirements). The information in this presentation does not take into account the objectives, financial situation or particular needs of any person. Nothing contained in this presentation constitutes investment, legal, tax or other advice.

Reference to Previous ASX Releases

This presentation refers to the following previous ASX releases:

- 8 July 2015 – Strategic Entry into the Graphite market
- 9 July 2015 – Geophysics Highlights Prospective Targets
- 10 July 2015 – Jumbo and Large Flake Graphite Identified at East Kimberley project

The Company confirms that it is not aware of any new information or data that materially affects the information included in the original market announcement and all material assumptions and technical parameters continue to apply and have not materially changed. The Company confirms that the form and context in which the Competent Person’s findings are presented have not been materially modified from the original market announcements.

ACN 091 951 978
Suite 68, 283 Given Terrace
Paddington, Queensland, 4064
Brisbane, Australia
Ph: +61 7 3369 7058
info@sayonamining.com.au

www.sayonamining.com.au



SAYONA
MINING LIMITED

