

# SILVER CITY MINERALS LIMITED

ABN 68 130 933 309



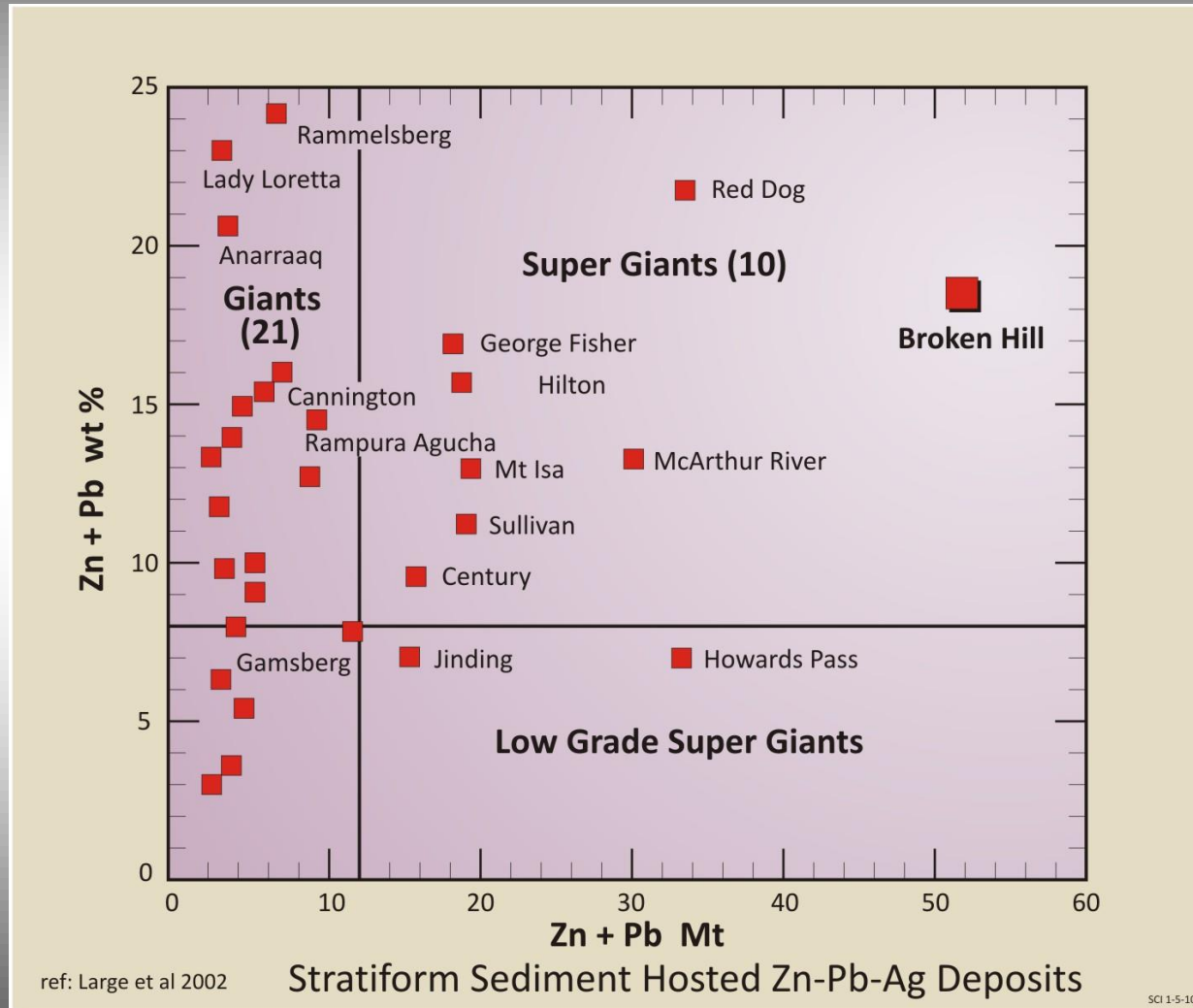
ASX Code: SCI

## **New South Wales Resource and Energy Investment Conference July 2015**





# So where does one look for...



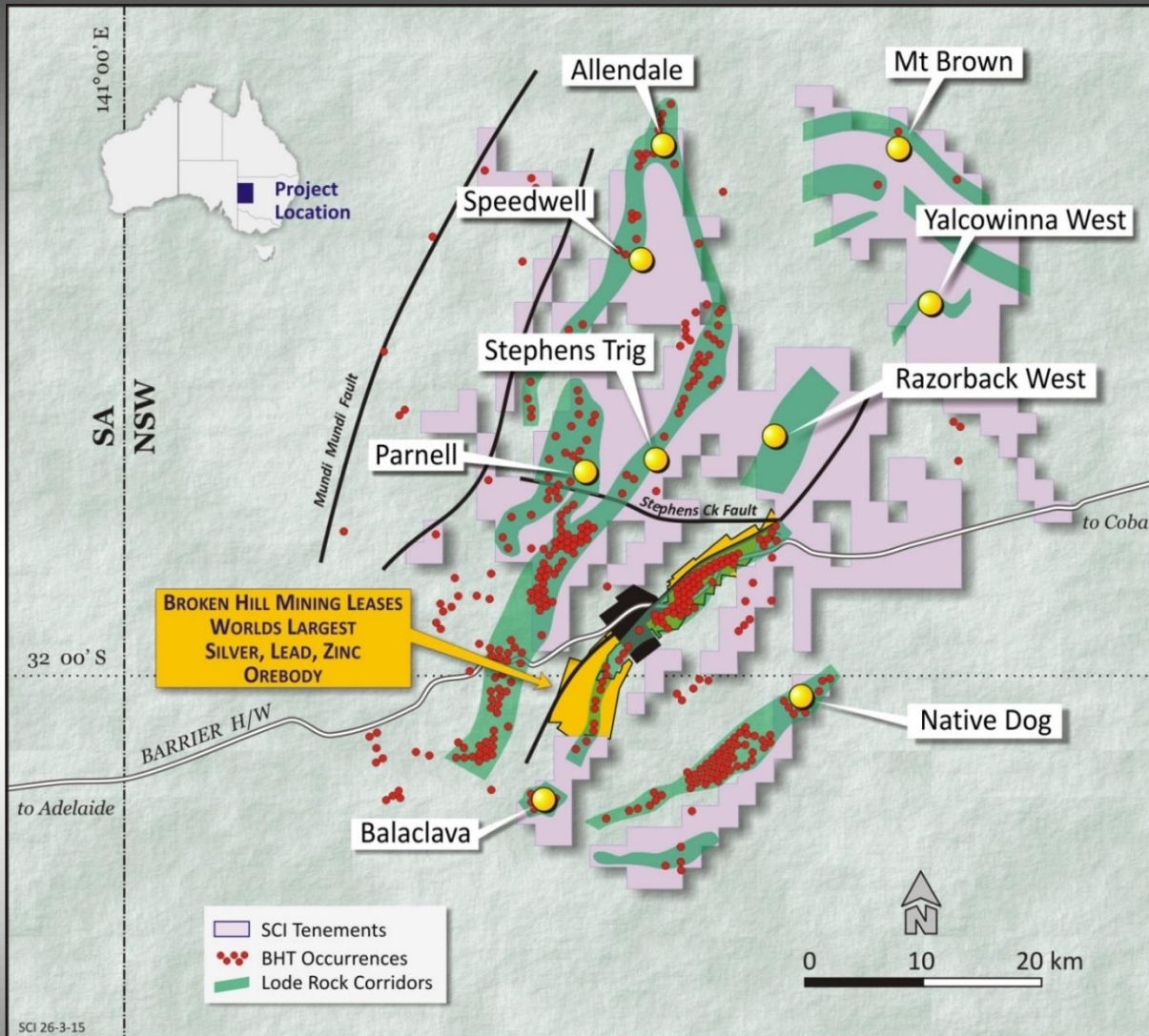
# Important Disclaimer

This material contains certain forecasts and forward-looking information, including information about possible or assumed future performance, exploration results, resources or potential growth of Silver City Minerals Limited (SCI), industry growth or other trend projections. Such forecasts and information are not a guarantee of future performance and involve unknown risks and uncertainties, as well as other factors, many of which are beyond the control of Silver City Minerals Limited. Actual results and developments may differ materially from those expressed or implied by these forward-looking statements, depending on a variety of factors. Nothing in this material should be construed as the solicitation of an offer to buy or sell SCI securities.

## Competent Person

Information in this document that relates to Exploration Results, Mineral Resources or Ore Reserves is based on information compiled by Christopher Torrey, who is the Managing Director and full-time employee and shareholder of Silver City Minerals Limited, and a Member of the Australian Institute of Geoscientists. Mr Torrey has sufficient experience which is relevant to the style of mineralisation and type of deposit under consideration and to the activity which he is undertaking to qualify as a Competent Person as defined in the 2012 Edition of the “Australasian Code for Reporting of Exploration Results, Mineral Resources and Ore Reserves”. Mr Torrey consents to the inclusion in the report of the matters based on his information in the form and context in which it appears.

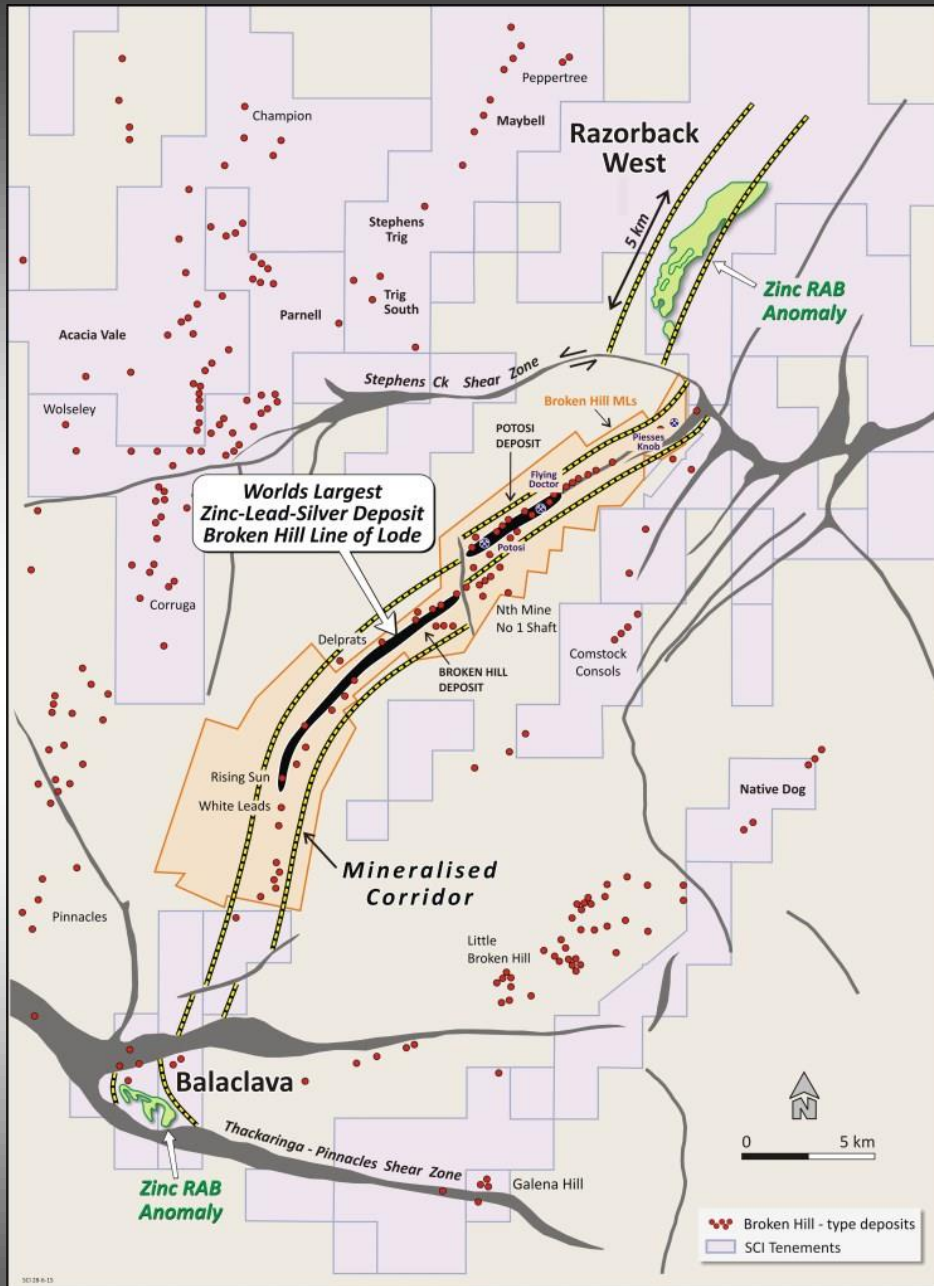




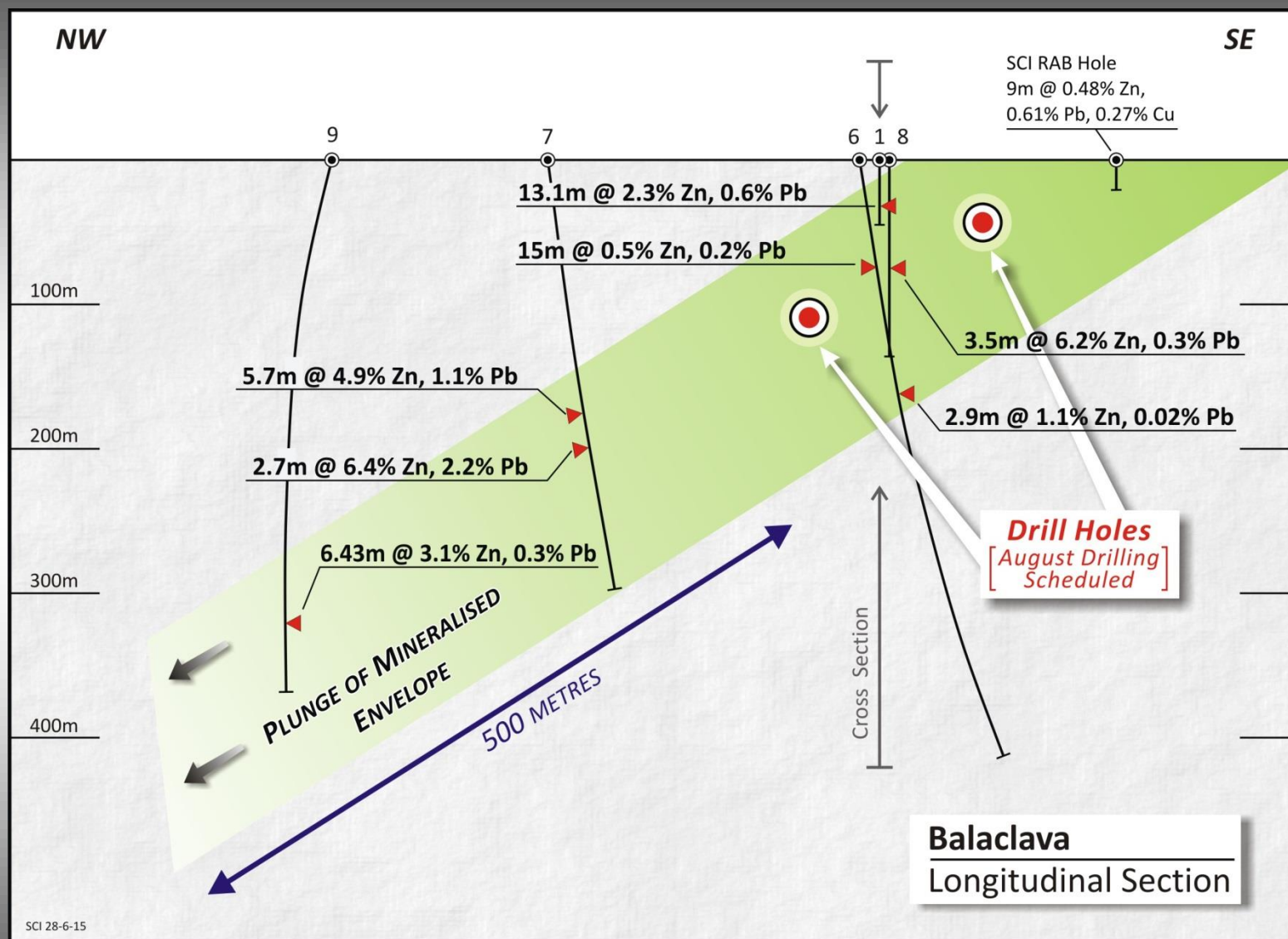
- Belt of prospective rocks throughout the tenure
- “Lode” rocks, mineral occurrences and old workings.
- 50% of tenure lies under shallow cover
- **Focus study shows Balacava, Razorback West and Stephens Trig as areas of high potential.**

# Razorback West and Balaclava

- Extensions of the Broken Hill mine corridor offset by large faults
- Both have same geology as Broken Hill under veneer of alluvial or soil cover.
- Both have untested geochemical and geophysical anomalies.



# Balaclava Drill Program Scheduled







# So why Silver City Minerals?

- **UNDER** explored tenements
- Two key projects immediately north and south of worlds largest Zinc-Lead-Silver deposit.
- Projected shortfall in Zinc supply
- Drilling scheduled for August-September





# Opportunity

- **Project Location**
- **An Option on Zinc Price**
- **Potential for Discovery**

**Where does one look  
for elephants?**

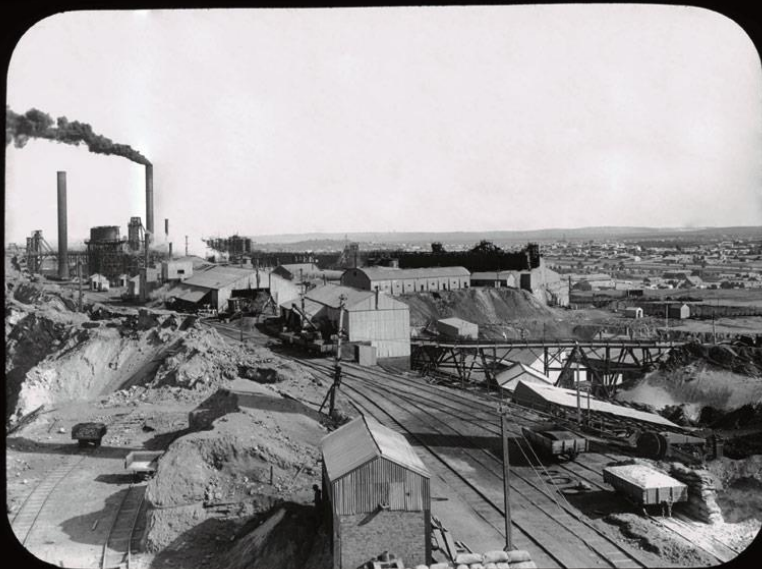
**In elephant country!**

# SILVER CITY MINERALS LIMITED

ABN 68 130 933 309



**ASX Code: SCI**



Level 1, 80 Chandos Street  
St Leonards  
NSW 2065  
Australia  
+61 2 94371737

[www.silvercityminerals.com.au](http://www.silvercityminerals.com.au)