



# Extraordinary General Meeting Presentation

September 17, 2015

# Important Information



## Forward Looking Statements

This presentation contains certain “Forward-Looking Statements” regarding future events and the future financial performance of DGO. All statements, other than statements of historical fact, included herein, including without limitation statements regarding forecast cash flows and potential mineralisation resources and reserves, exploration results and future expansion plans and development objectives of Drummond Gold Limited are forward-looking statements that involve various risks and uncertainties many of which are outside the control of DGO. Any forward looking statements included in this presentation involve subjective judgement and analysis. There can be no assurance that such statements will prove to be accurate and actual results and future events could differ materially from those anticipated in such statements.

Except as required by law, no representation or warranty, express or implied, is made as to the fairness, accuracy, completeness, reliability or correctness of the information, opinions and conclusions, or as to the reasonableness of any assumption contained in this presentation. To the extent permitted by law, you release Drummond Gold Limited (DGO) and its officers, employees and agents from any liability without limitation arising as a result of the reliance by you or any other person on anything contained in or omitted from this presentation.

The distribution of this presentation or information contained in it in jurisdictions outside Australia may be restricted by law and you should observe any such restrictions. The information contained in this presentation does not constitute investment, legal, accounting, regulatory, taxation or other advice and it does not take into account your investment objectives or personal situation or needs. You are solely responsible for seeking independent professional advice in relation to this presentation and any action taken on the basis of the information contained in it. No responsibility or liability is accepted by DGO or its officers, employees or agents for the information contained in this presentation or any action you take on the basis of this presentation.

# Corporate Structure



Share Capital	Pre-Consolidation	Post- Consolidation
Total Shares on issue	519,021,975	5,190,220
Issue of shares to Directors	21,500,000	215,000
	<b>540,521,975</b>	<b>5,405,220</b>

Top 5 Shareholders (post issue of shares to Directors)	Percentage Holding
Merrill Lynch (Australia) Nominees Pty Ltd	38.05
Resource Surveys Pty Ltd (including related parties)	14.86
Sheratan Pty Ltd (including related parties)	8.50
Cairnglen Investments Pty Ltd	6.14
Scintilla Strategic Investments Ltd	5.24
Holdings by Directors and related parties	23.6

# Exploring for Sediment Hosted Gold in Australia



## Target Identification and Acquisition

- Innovative research over the past 10 years at CODES at the University of Tasmania (UTAS) by Professor Ross Large and his team has led to a breakthrough in understanding the peak times, and formation processes, for world class gold deposits.
- CODES, established in 1989, has been recognised as a world leader in research on the genesis of gold and base-metal deposits.
- Drummond entered into an agreement with CODES at UTAS for a research project to access the research and database.

# Peak Gold - Scientific Basis



- Pyrite database developed by CODES over the past 10 years has identified the geologic times when the worlds oceans were enriched in gold and other metals.
- Furthermore gold in sediment- hosted deposits is considered to be sourced from nearby sedimentary basins.
- The key initial step is the identification of gold enriched sedimentary basins.
- Identifying structural settings conducive to the development of ore bodies, such as deep seated structures and anticlines.

# Identify Prospective Basins for Gold Mineralisation



- Access the Australian Federal Governments Geoscience Australia (GA) data base of geologic units and compile list of prospective sedimentary basin and mafic units.
- Acquire geologic maps from the different state surveys and sort them for the most prospective geologic times.
- Examine prospective basins further and prioritize the most prospective basins.

# Peak Gold - Time Periods



Deposit	Age	Gold Endowment
Witwatersrand	3,000+ MA	2.8 Billion ounces
Kalgoorlie	2,700 +/- 50MA	62 Million ounces
Sukhoi Log	540 – 650 MA	96 Million ounces
Carlin Trend	430 +/- 20 MA	64 Million ounces

- The world's largest gold deposits are sediment hosted with the exception of Kalgoorlie.
- **Australian gold exploration has not been focused on sediment hosted gold.**

# Exploration Strategy

- Use sediment hosted gold deposit analogues of world class gold deposits and the peak ages of gold deposition to target Australian sedimentary basins.
- Acquire or joint venture exploration areas targeted by the UTAS research.
- Research and review past exploration data for the target areas.
- Use that research to identify drill ready targets.
- Exploration priorities determined by the identification of drill targets.



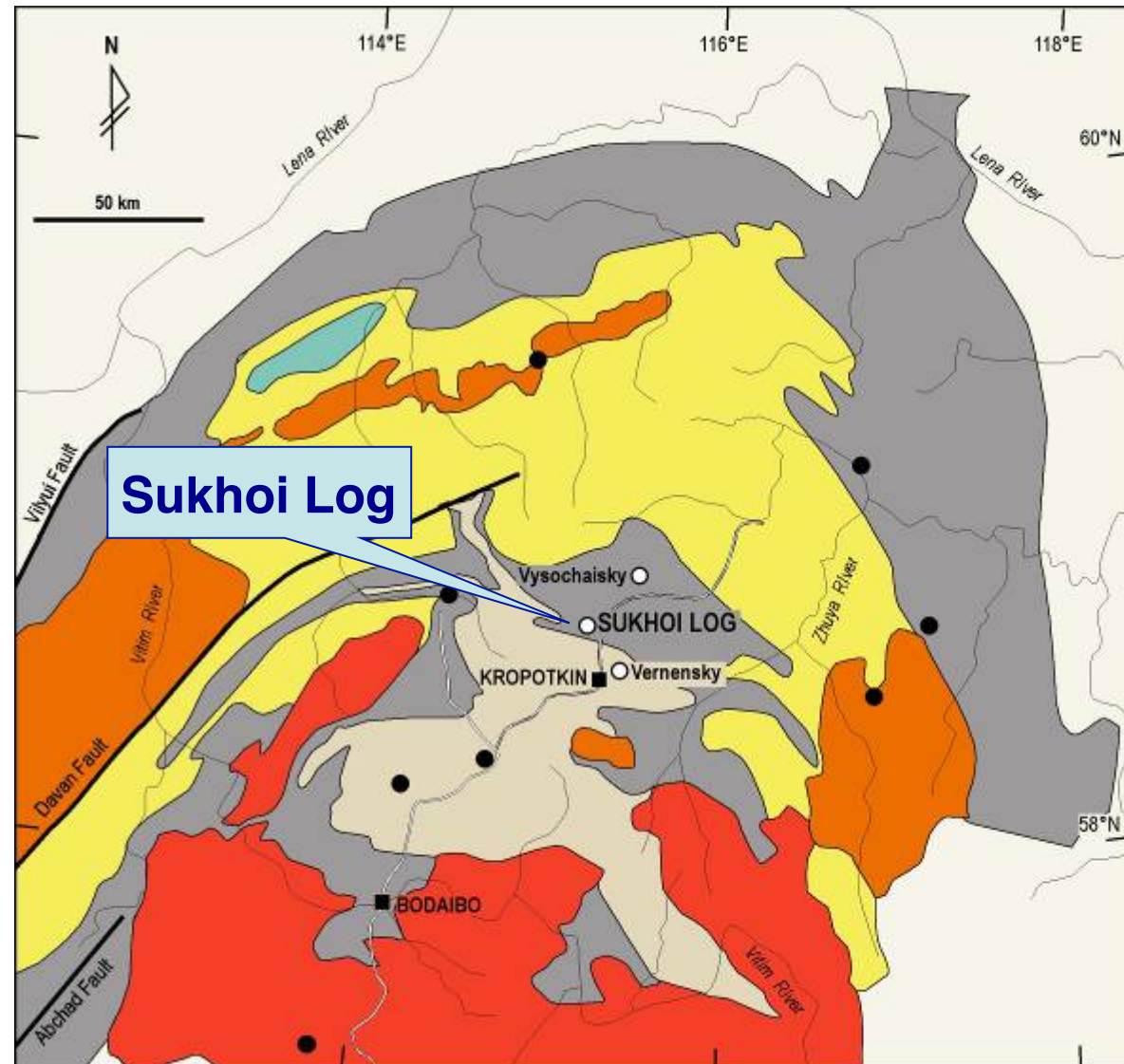
# Sukhoi Log – A Type Example (540-650 MA)



A giant sediment-hosted gold deposit - black shale, siltstone and limestone.

Black shale-hosted, disseminated pyrite and minor pyrite-quartz veinlets.

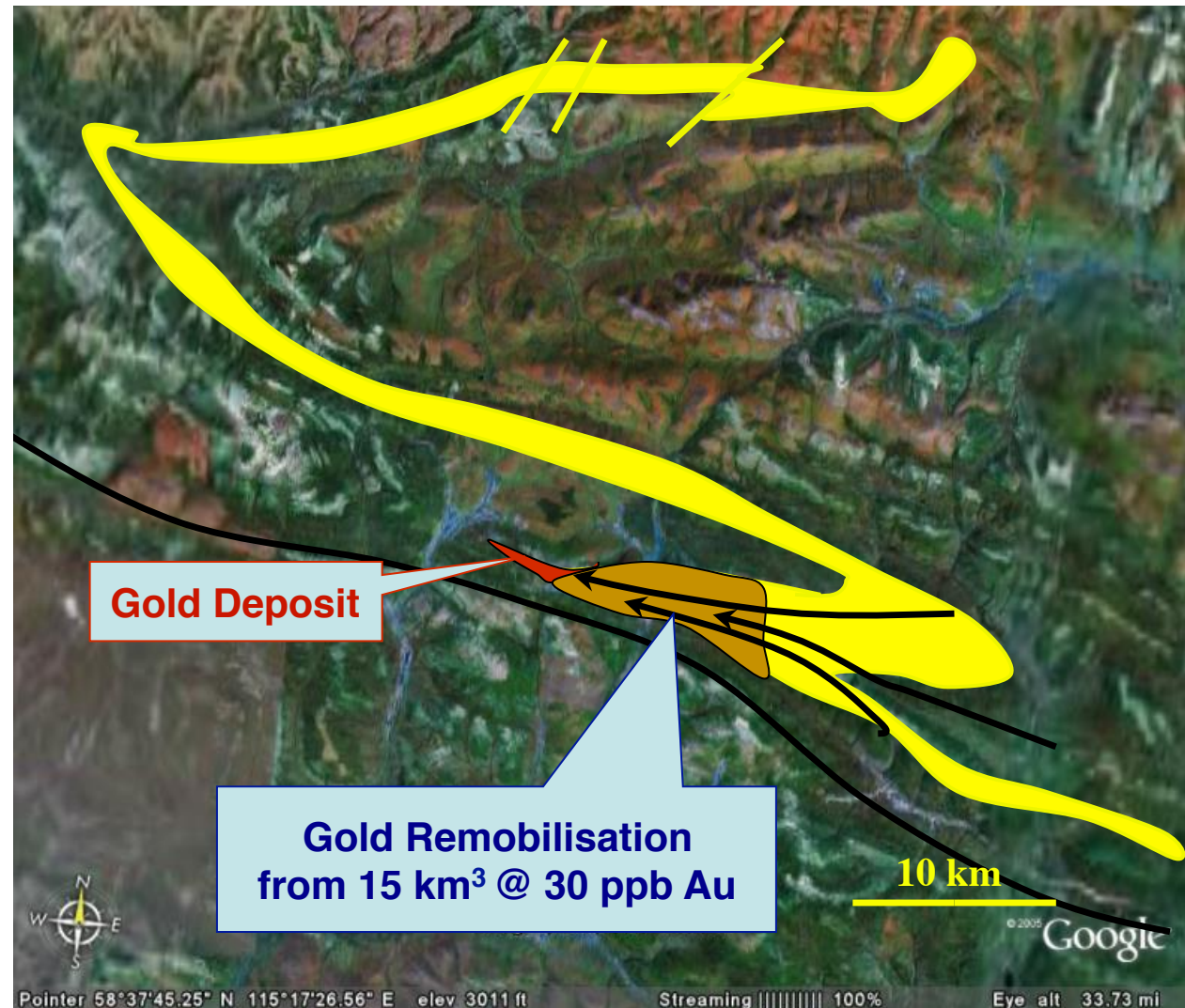
Resource of 686 Mt  
@ 2.8 g/t Au.



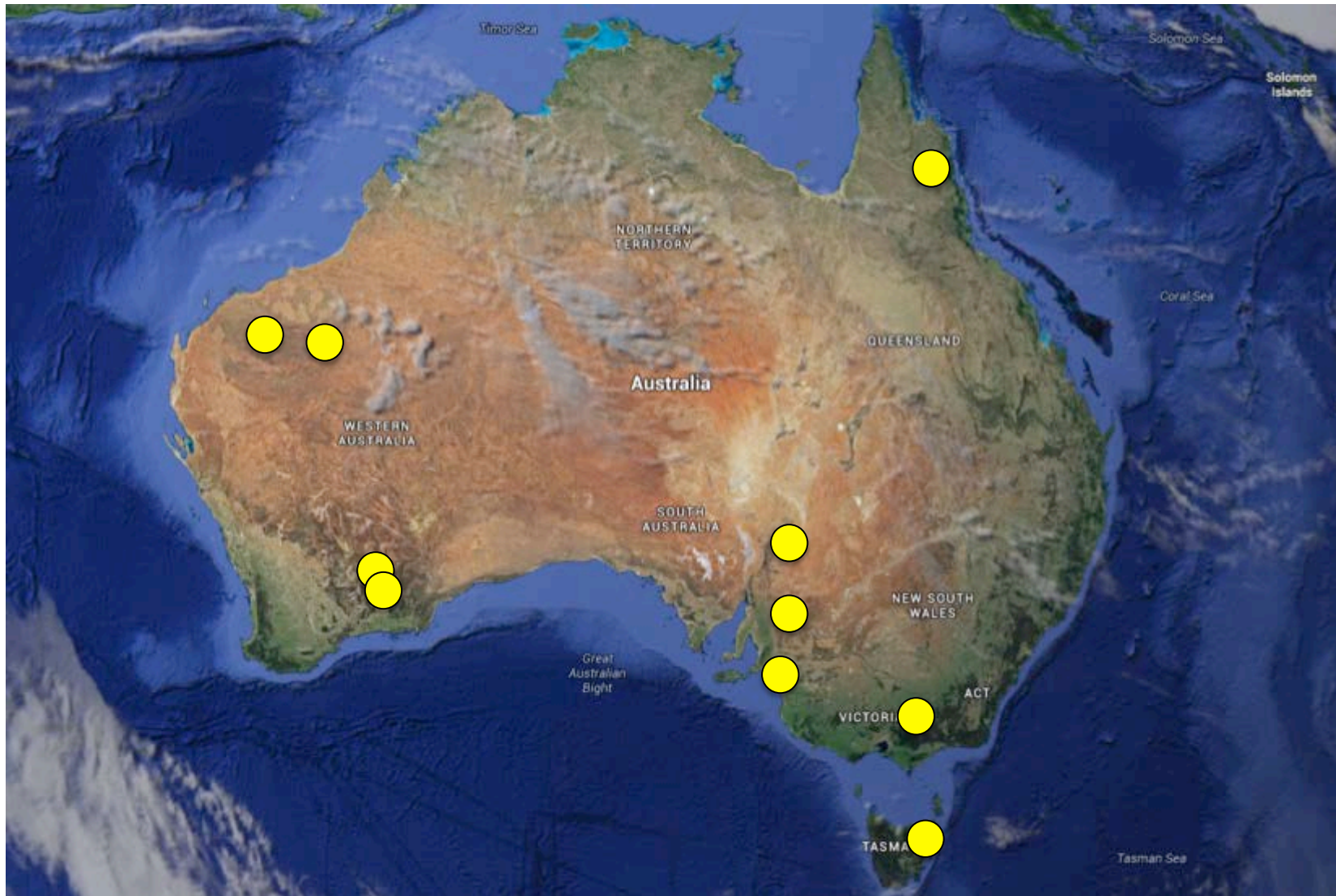
# Sukhoi Log – A Type Example (540-650 MA)

Gold sourced from  
gold enriched  
sedimentary  
sequence

Remobilised gold  
concentrated in  
anticlinal core and  
deposited in black  
shale



# High Priority Targets



# Western Australia

The Pilbara and Yilgarn Cratons are the most prospective for sediment hosted gold deposits.

Peak gold geologic times are:

**3000 +/- 100 Ma**

Mosquito Creek Sedimentary Basin

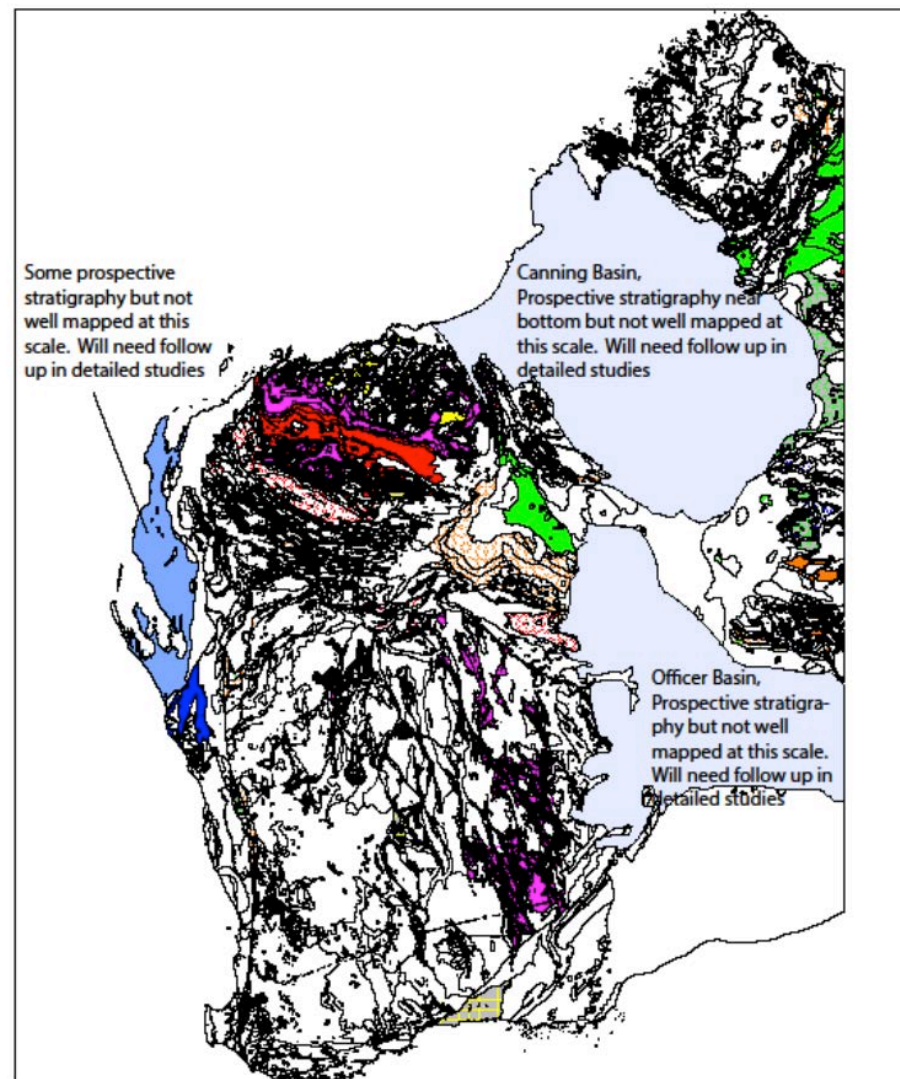
**2700 +/- 50 Ma**

Hamersley Formation

Black Flag Beds, Yilgarn

**2200 +/- 50 Ma**

Yerida Basin, Johnson Cairn Formation

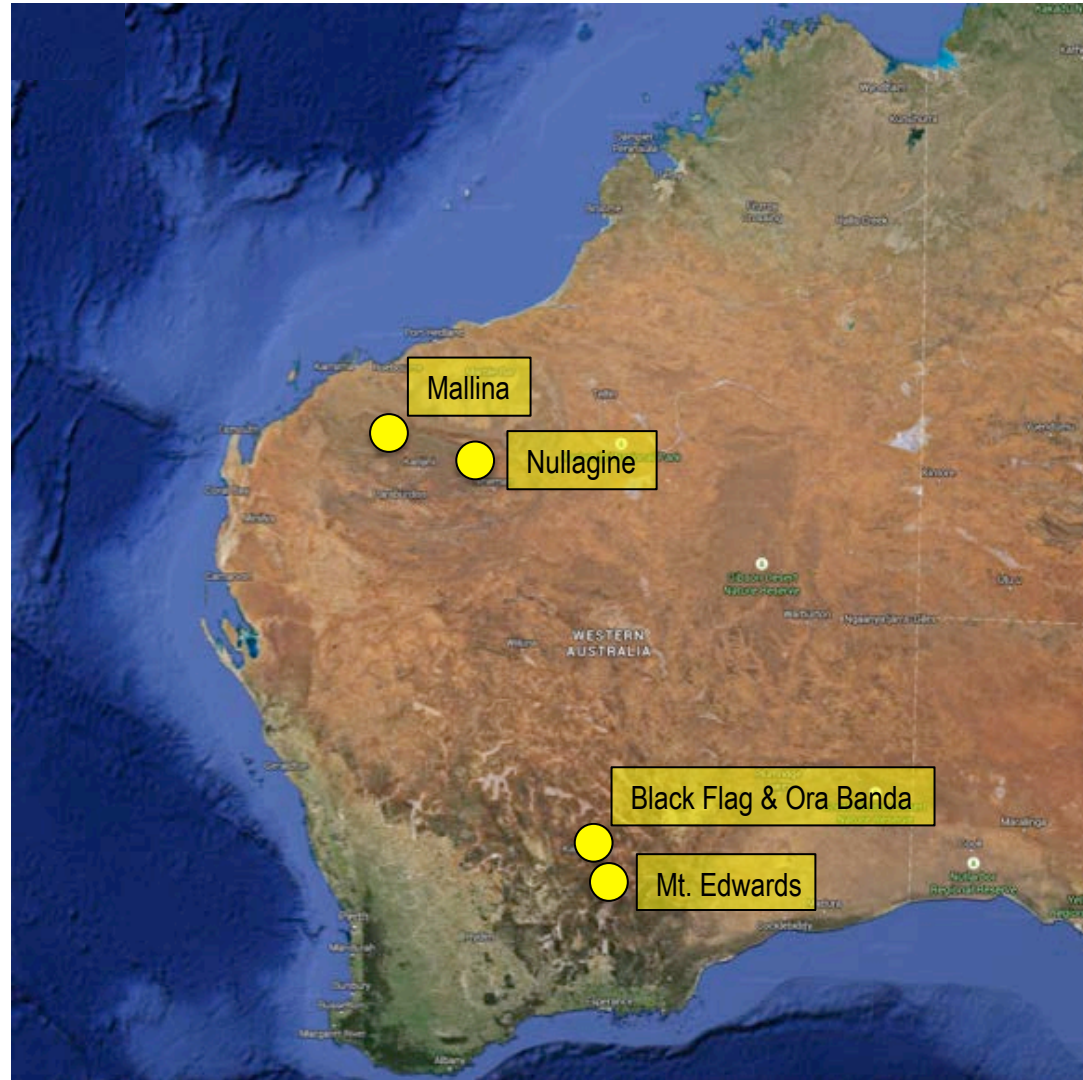


# Western Australia

High prospectivity for discovery of gold deposits in sedimentary basins.

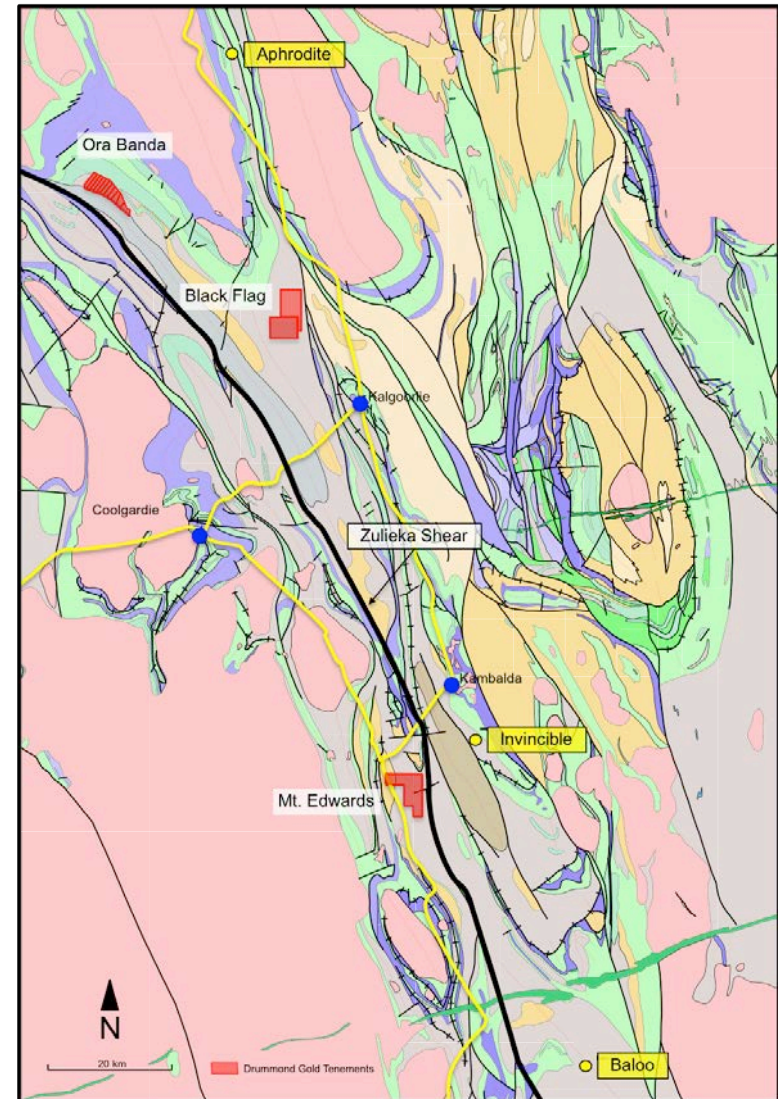
Most gold exploration in the Yilgarn has ignored the sedimentary basins, concentrating on the greenstone sequences.

Much of the Pilbara has not been investigated sufficiently for gold potential due to an overwhelming interest in iron ore exploration.



# Focus on Black Flag Beds

- Favourable geologic age identified by UTAS research.
- Recent discoveries have confirmed the prospectivity.
- DGO has already secured tenements covering Black Flag Beds.
- Open file data review has identified gold in the cover rocks with no significant deeper drilling.

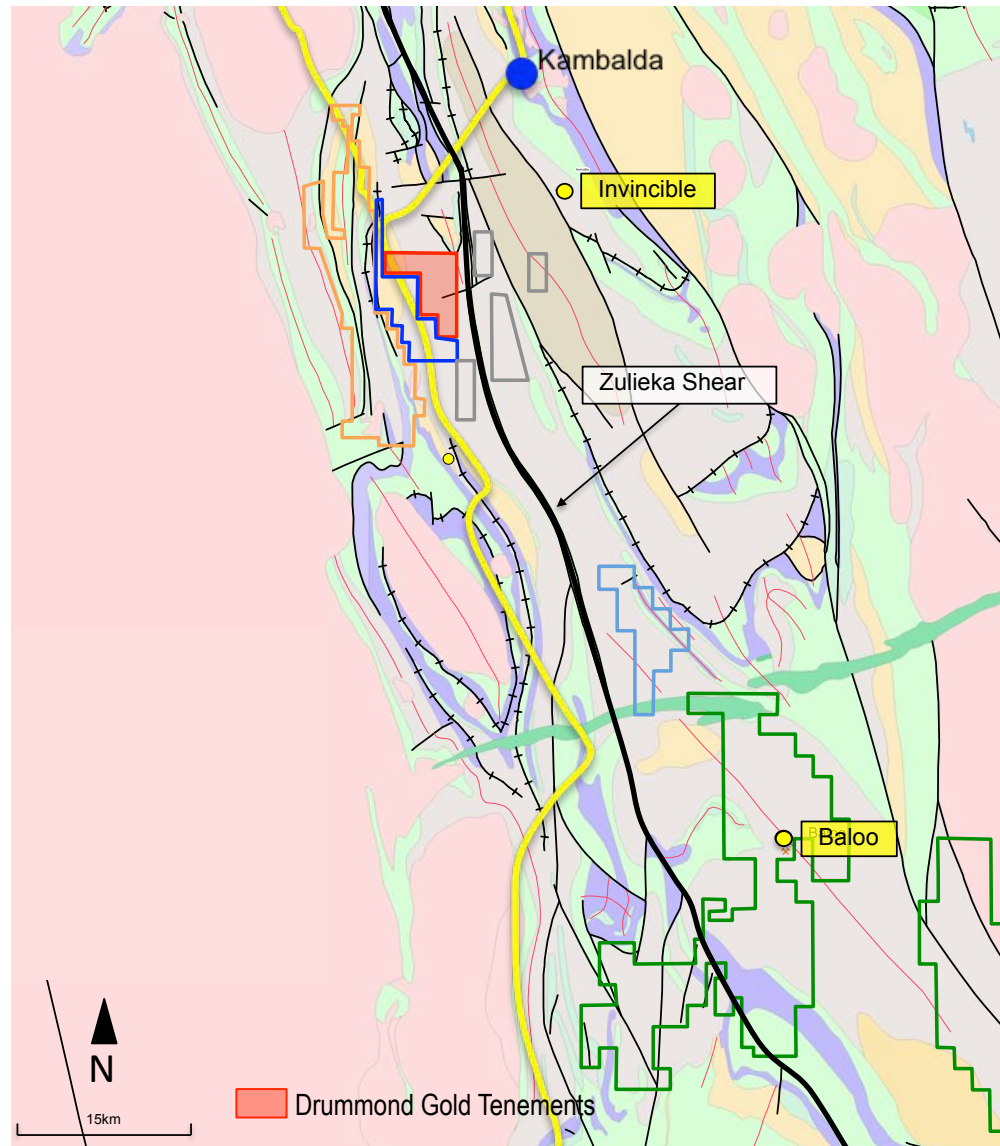


# Mt Edwards

Recent discoveries of sediment hosted gold deposits in the Eastern Goldfields:

**Invincible** (2013 Resource stood at 9.2Mt @ 4.5g/t for 1.33Moz) (hosted in the “Black Flag Mudstone”).

**Baloo** (sediment hosted) best intersection to date of 33 metres at 3.81 g/t gold from 24 metres.



# Black Flag & Ora Banda

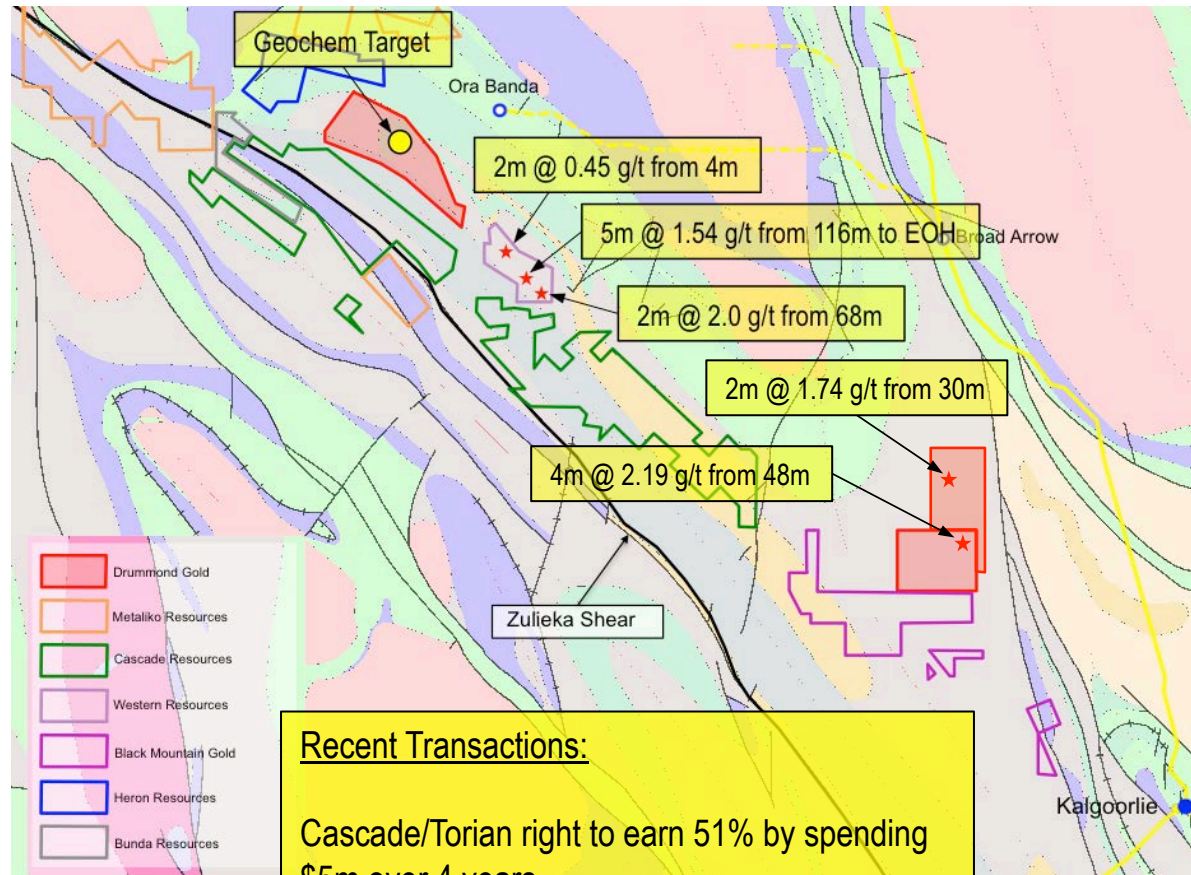


Target Type:

Invincible (2013 Resource  
9.2Mt @ 4.5g/t for 1.33Moz)  
Hosted in the “Black Flag  
Mudstone”

Black Flag tenure overlies  
sediments of the Black Flag  
Beds on the eastern limb of  
the Mt Pleasant anticline  
adjacent Abattoir Shear.

Previous exploration has  
consisted of broad spaced  
shallow aircore drilling, with  
limited follow up drilling.



## Recent Transactions:

Cascade/Torian right to earn 51% by spending  
\$5m over 4 years

Western Resources/Siburan right to earn 51%  
by drilling 1,360m with a further 29% earned by  
paying \$175,000 cash (drilling commenced  
June 10<sup>th</sup>, 2015)

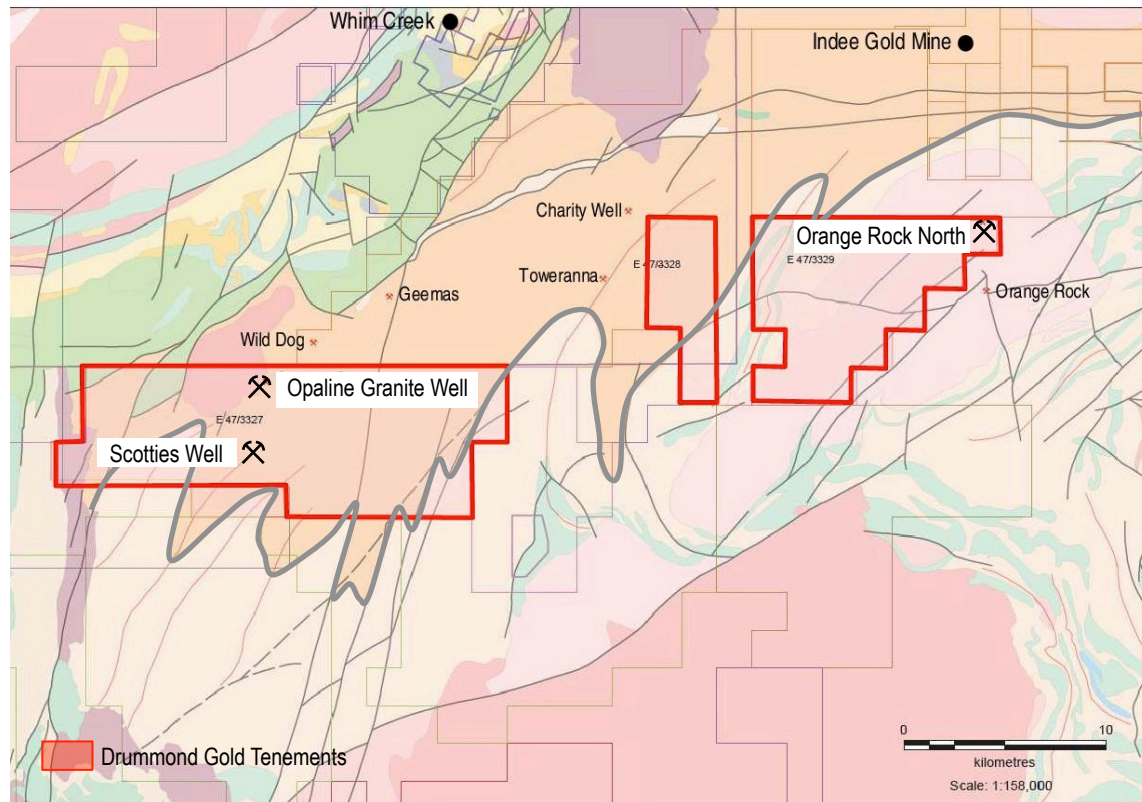
# Mallina

Witwatersrand Analogue  
(3,000+ MA)

Anticlinal structures in  
prospective stratigraphy -  
Mallina Formation and  
Constantine Sandstone

Visible gold identified in  
panned stream sediments at  
Scotties Well; follow up  
exploration didn't identify the  
source.

Epithermal quartz veining  
and breccias identified at  
Opaline Granite Well.



# South Australia

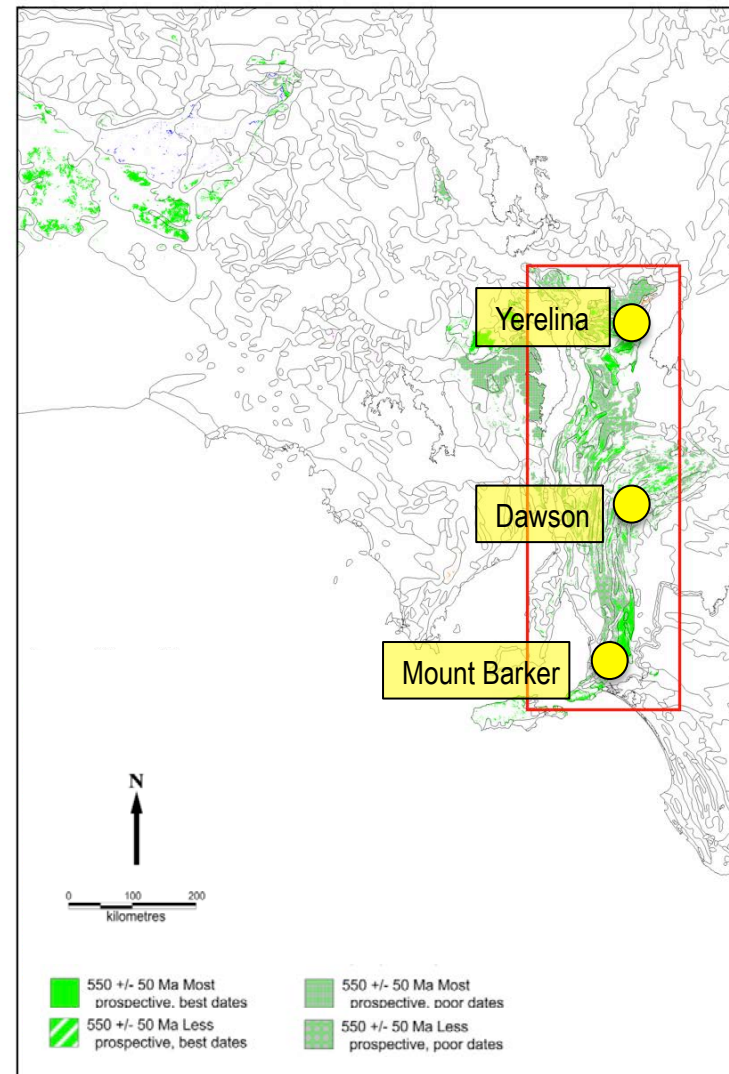
## Sukhoi Log Analogue (540 – 650 MA)

The most prospective area is the Adelaide geosyncline (green area in red square).

Anticlinal folds should be followed up with emphasis on areas with high geochemical anomalies, historic gold mining and faults within the anticlines.

The age of most of the prospective units is the same as the **giant Sukhoi Log deposit**.

Three primary targets areas have been identified.



# Mount Barker



The airborne magnetics and inferred geology show a series of folds in the prospective stratigraphy.

The Bird in Hand prospect – historic gold mine with current resource of 557,000t at 13g/t currently under a feasibility study – owned by Terramin Australia Limited.

Target areas identified due to proximity to old gold workings, highest gold in silt in the state and the presence of anticlinal folds.

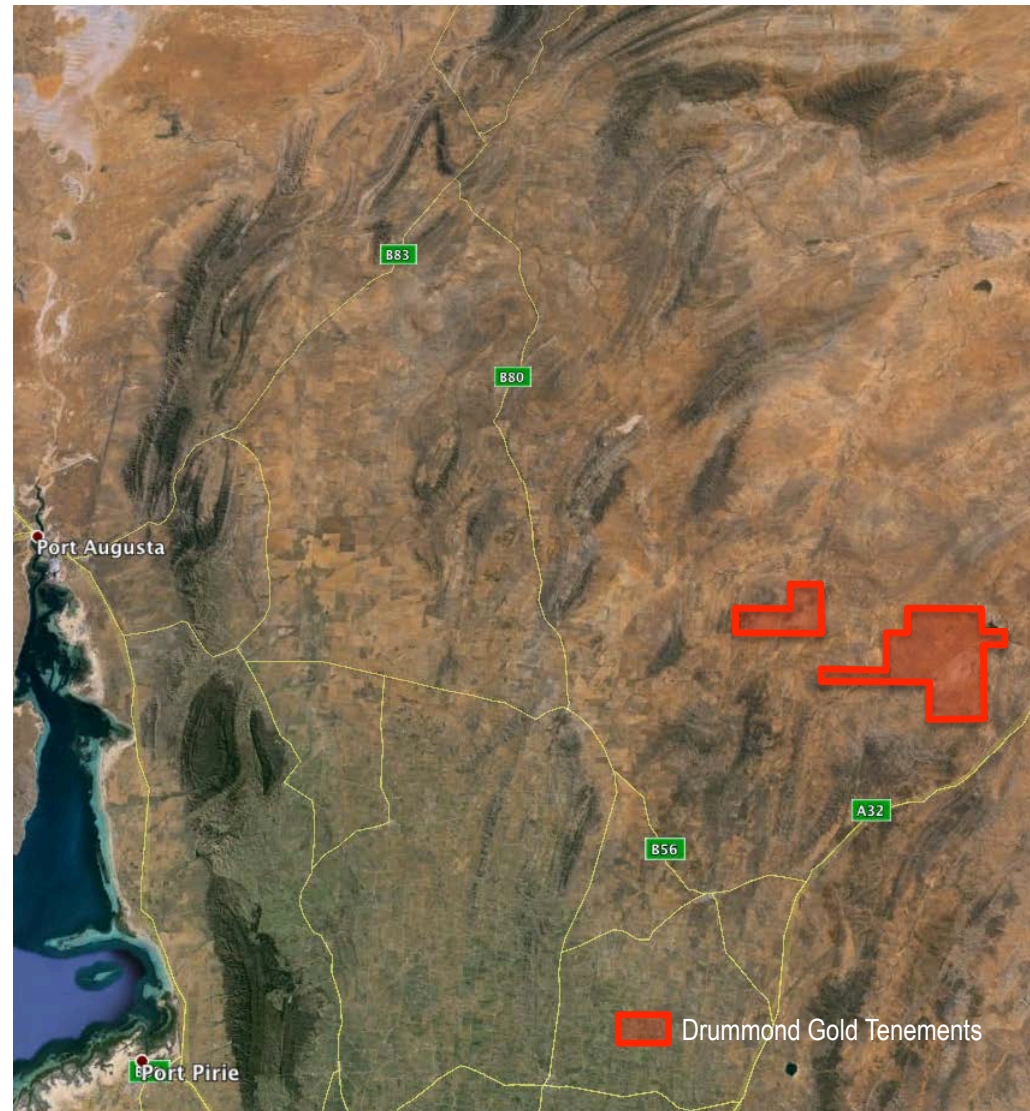


# Dawson

Prospective stratigraphy with a large number of broad anticlinal folds evident in the regional magnetics.

Disruption in the magnetics likely to be a large fault that could have acted as a fluid conduit.

Known gold mineralisation parallels the approximate strike of anticlinal fold structures.



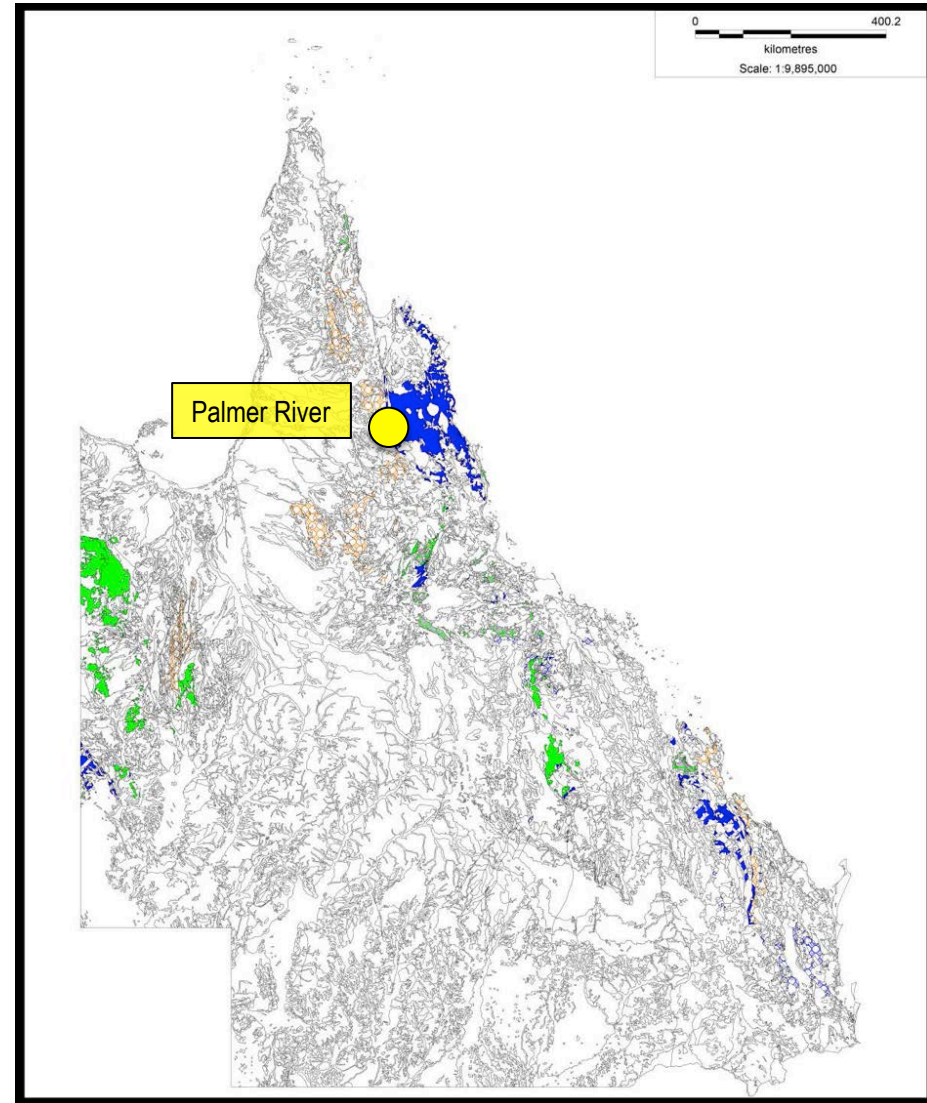
# Queensland

A few areas of interest have been identified within sedimentary rocks from 430Ma and 550Ma.

The Palmer River area has been selected due to proximity to known gold mineralisation and prospective sedimentary sequence.

Analogue:

Carlin Trend (430 +/- 20Ma)



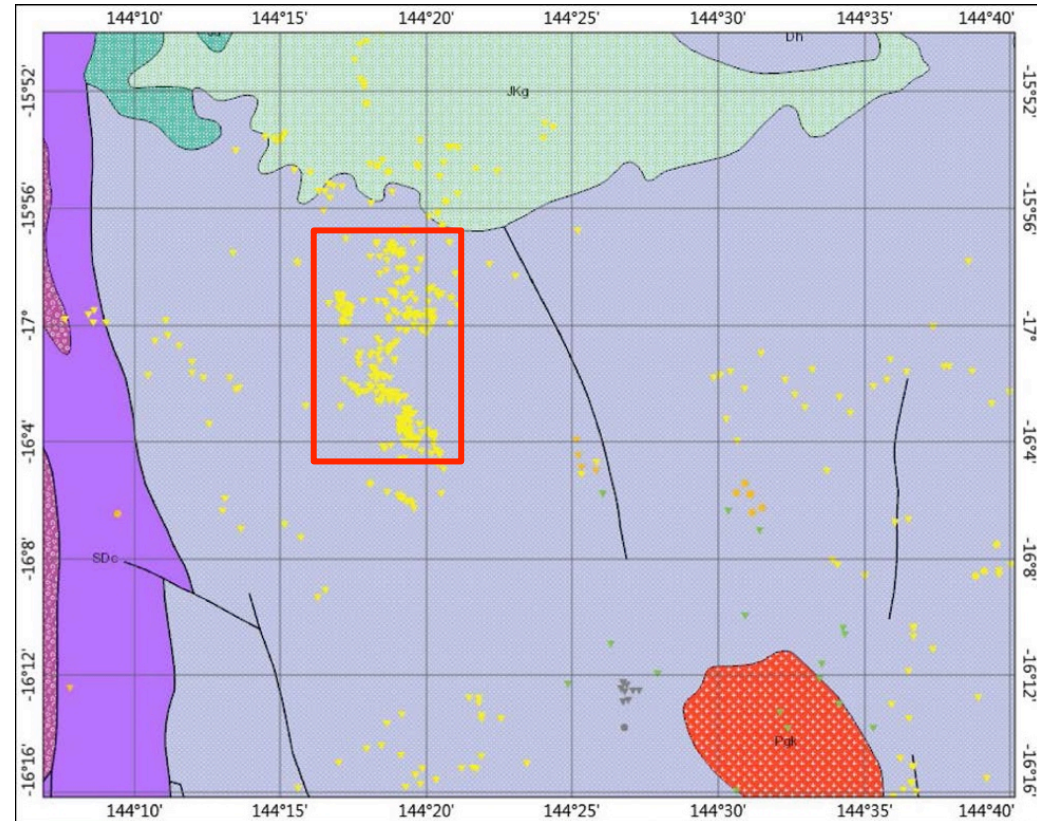
# Palmer River



Target area in prospective Hodgkinson Formation sequence near intrusions and regional faults that could act as fluid conduits – Analogue is Carlin Trend.

Famous Gold Field dating back to the start of the 19<sup>th</sup> Century with known gold mineralisation predominantly occurring as alluvial deposits in recent drainage.

Selection of target areas will require careful consideration and research.



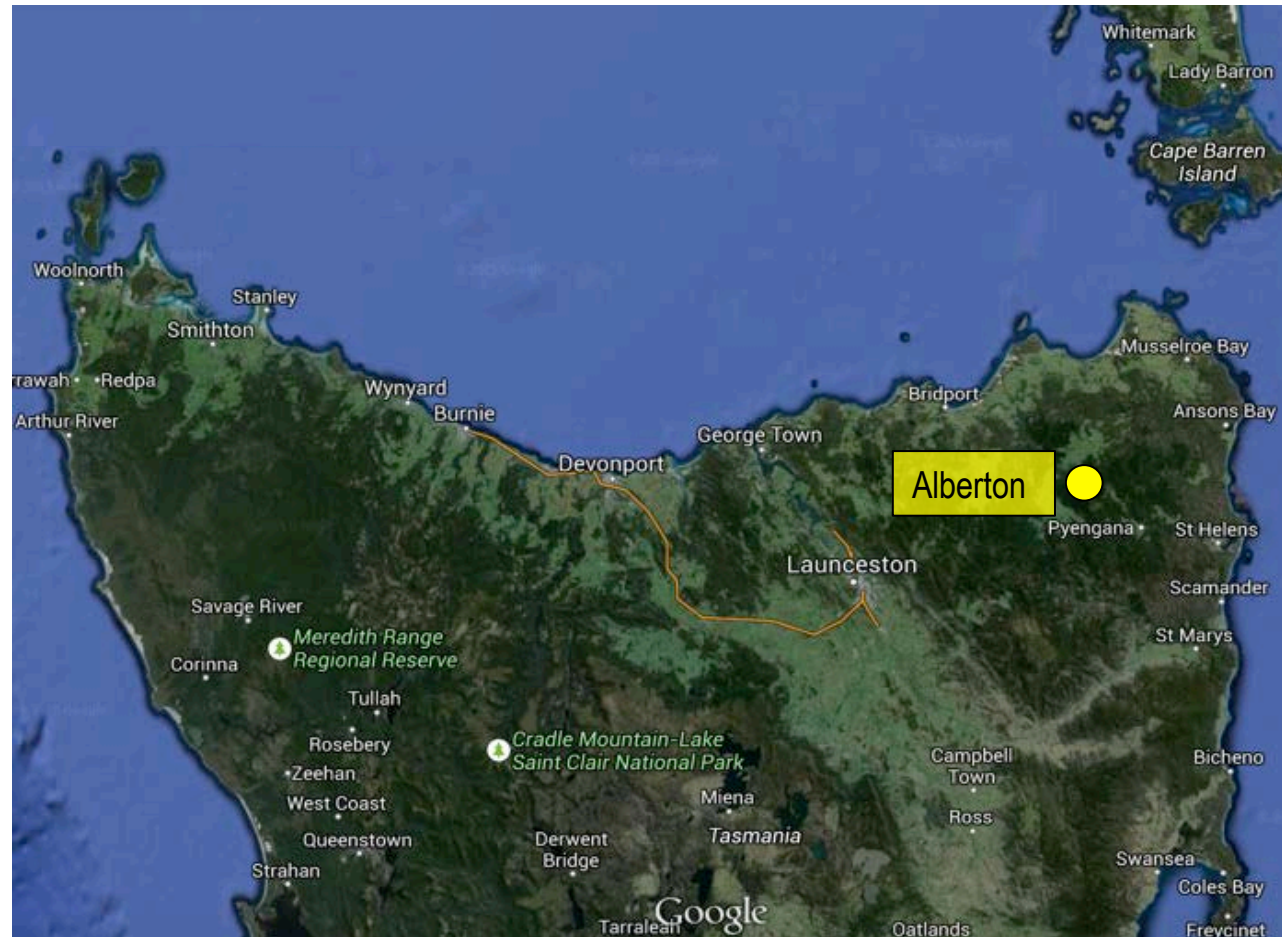
# Tasmania

Carlin Trend Analogue  
(430 +/- 20Ma)

Lone Star Siltstone &  
Sideling Sandstone 354 –  
434Ma

North-east Tasmania has  
prospective stratigraphy  
that has not been subjected  
to high levels of modern  
exploration.

Considered prospective  
due to presence of known  
gold mineralisation, faults  
and Devonian intrusions  
that could act as fluid  
conduits.



# Alberton



- Known gold mineralisation within 15km strike length of prospective stratigraphy on north – south trend with abundant intrusions in the area.
- Previous exploration data and remote sensing data is being collated and will be reviewed to assist in defining specific target areas.
- Tenements generally held by prospectors.
- The strategy is to apply for vacant land and enter in to joint venture opportunities.

# Summary



- Excellent research by UTAS lead to clear identification of peak geologic times for gold deposits to form.
- DGO Gold is leveraging off this research using sediment hosted gold deposit analogues to target Australian sedimentary basins within these peak geologic times.
- Exploration areas targeted through this process will be applied for, acquired or secured via joint venture.
- Past exploration data for target areas will be researched and reviewed to identify drill ready targets.
- Exploration priorities will be determined by the identification of drill targets.
- **Australian gold exploration has not been focused on sediment hosted gold.**