

14.0m of Sulphide Mineralisation intersected at Jervois 3DIP Target

Highlights

- Mineralisation intersected over 14.0 metres at the Rockface prospect from 253.5m
- Mineralisation coincides with a strong, IP chargeability and conductivity anomaly
- Rockface IP anomaly is approx. 500m long

KGL Resources (KGL) recently completed a 3D - Induced Polarisation (3DIP) & Magnetotelluric (MT) survey in the Bellbird region to search for additional zones of mineralisation in a poorly tested and yet highly prospective zone along the 12km of mineralised strike length at Jervois (Northern Territory).

A 3,500m drilling program designed to test the 3DIP targets at the Jervois project continues to intersect further mineralisation. The fifth hole in the program, KJCD171 has intersected a 14m down hole length of strongly mineralised core when targeting a coincident IP chargeability /conductivity anomaly on the Rockface trend.

The hole was drilled to 252m using Reverse Circulation (RC) and then changed to diamond core drilling. The hole is deeper than any previous hole drilled at Rockface and well below the current Inferred resource.

The RC drilling intersected intervals of disseminated mineralisation from 205m to 252m which will be sent for assay on a metre by metre basis. Following the changeover to core drilling at 252m there is a narrow interval of chlorite garnet schist which grades into a massive, mineralised (chalcopyrite/pyrite) magnetite that extends from 253.5m to 267.5m (14.0 metres) – Figure 1. These garnet, magnetite schists are very typical of the host rocks for other mineralisation within the project area.



Figure 1 Mineralised core from 259.33-266.87 in KJCD171

The hole KJCD171 will now be extended through to the Killeen Copper trend that was targeted (Target F) and intersected in the previous hole KJC170 (see Figure 2). The 440m long RC hole (KJC170) intersected multiple zones of minor disseminated and stringer chalcopyrite. An upper zone between 95-108m relates to the eastern extension of the Rockface mineralisation. A second zone of disseminated chalcopyrite in garnet-magnetite altered sandstone centred on 366-383m is likely to be the Killeen Copper trend that is now being targeted in the extension of KJCD171.

Simon Milroy, the Managing Director of KGL Resources comments, "This intersection shows that the 3DIP survey method works well at the Jervois project. This is important because it now gives us confidence to use this geophysical survey method over other areas of the Exploration license to define new prospective areas."

"The Rockface trend does not currently feature in our PFS mine schedule though with mineralisation like this, in our first hole into an IP anomaly 500m long, it is likely that further drilling could result in the definition of additional prospective areas that may be amenable to mining, going forward."

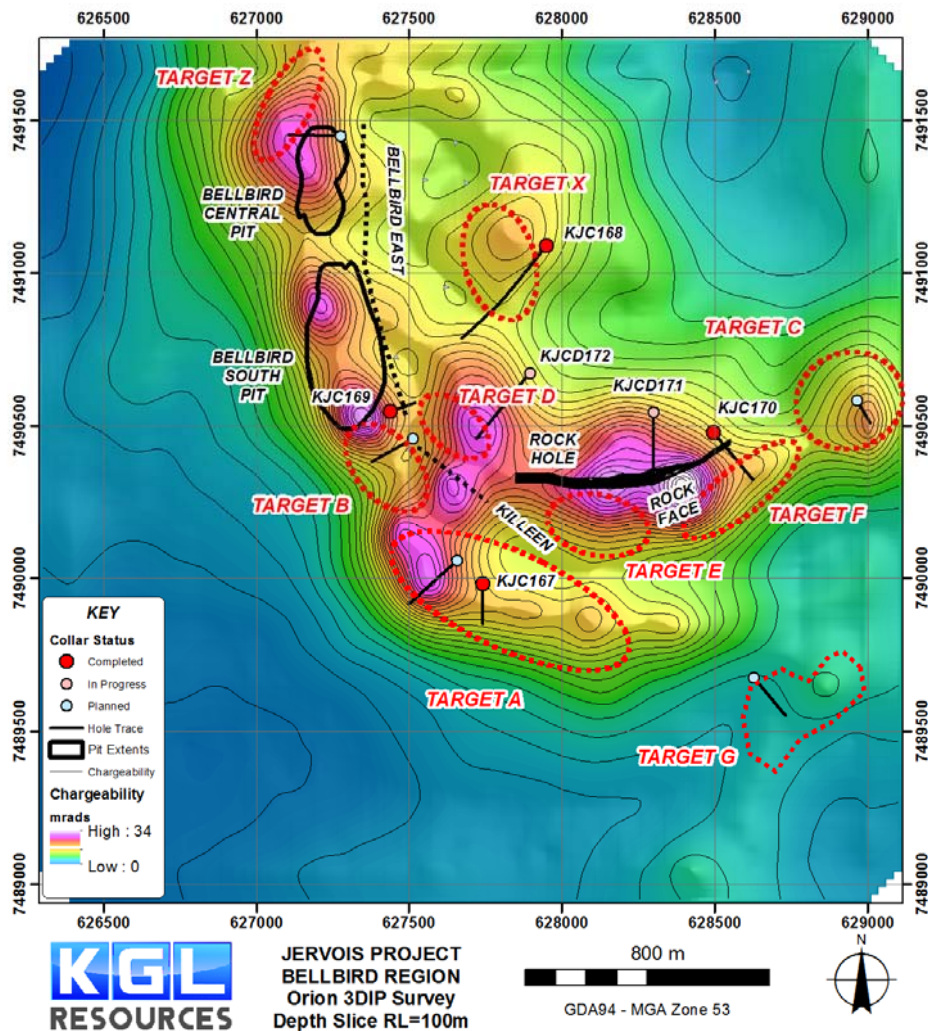
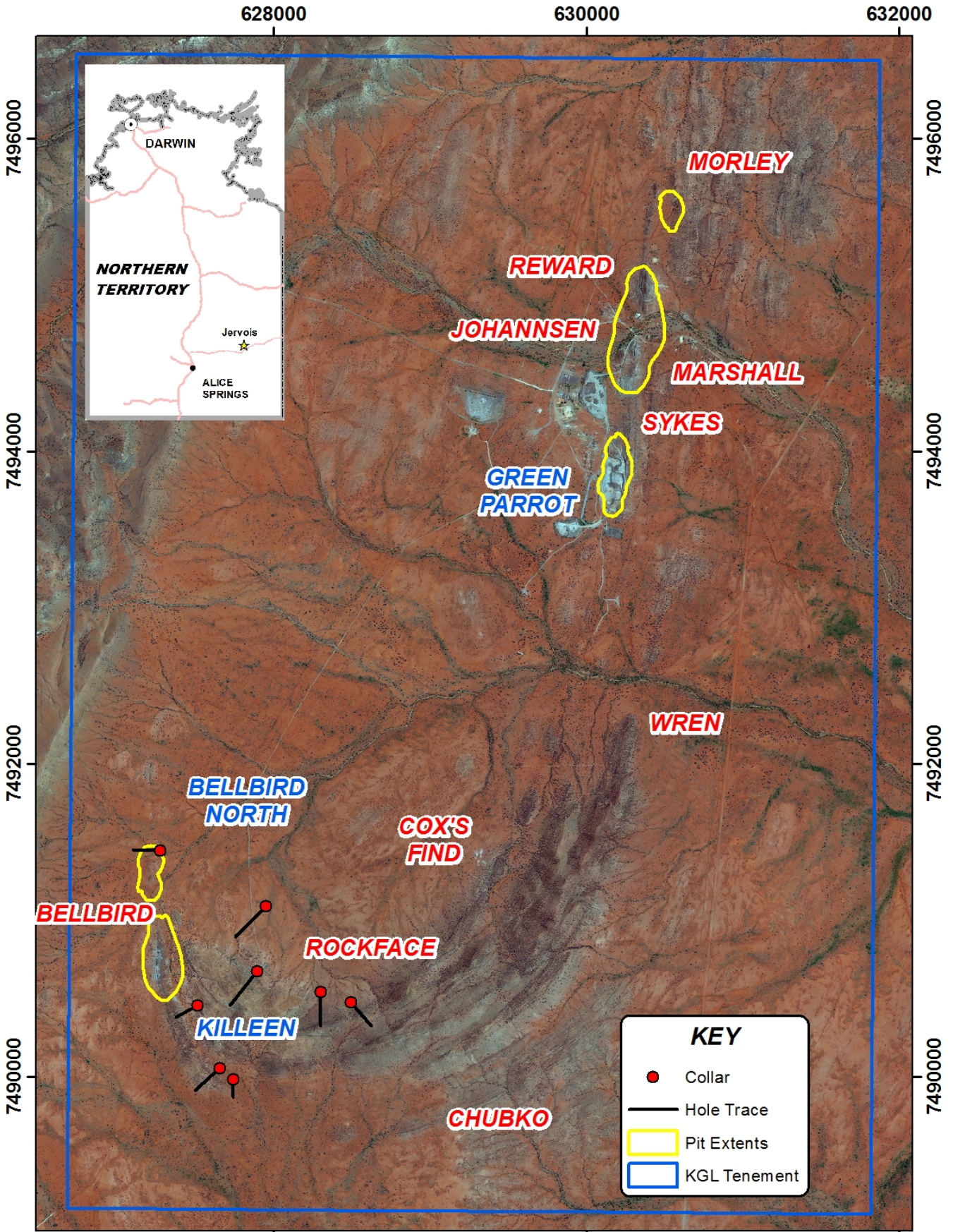


Figure 2 3DIP - Chargeability depth slice at RL 100m

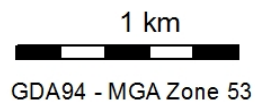


KEY

- Collar
- Hole Trace
- Pit Extents
- KGL Tenement



JERVOIS COPPER PROJECT
3DIP Target Drilling



For further information contact:

Mr Simon Milroy
Managing Director
Phone: (07) 3071 9003

About KGL Resources

KGL Resources Limited is an Australian mineral exploration company focussed on increasing the high grade Resource at the Jervois Copper-Silver-Gold Project in the Northern Territory and developing it into a multi-metal mine.

Competent Person Statement

The Jervois Exploration data in this report is based on information compiled by Martin Bennett, who is a member of the Australian Institute of Geoscientists and a full time employee of KGL Resources Limited.

Mr. Bennett has sufficient experience which is relevant to the style of the mineralisation and the type of deposit under consideration and to the activity to which he is undertaking, to qualify as a Competent Person as defined in the 2012 Edition of the Australasian Code for Reporting of Exploration Results, Mineral Resources and Ore Reserves. Mr. Bennett has consented to the inclusion of this information in the form and context in which it appears in this report.