



## **Monthly Operational Data**

**For the month ended 30 September 2015**



# Highlights for September 2015

- **Average Otahuhu wholesale price for September 2015: \$58/MWh (p3)**
- **Hydro storage as at 30 September: South Island 94% of mean, North Island 127% of mean (p4)**
- **Otahuhu futures settlement wholesale price for 4<sup>th</sup> quarter 2015 (ASX) (p4):**
  - As at 12 October: \$56/MWh
  - As at 30 September: \$55/MWh
  - As at 31 August : \$58/MWh

# Wholesale electricity prices

3

September 2015

- The average price at Otahuhu (North Island) for September 2015 was \$58/MWh while the average price at Benmore (South Island) was \$56/MWh.



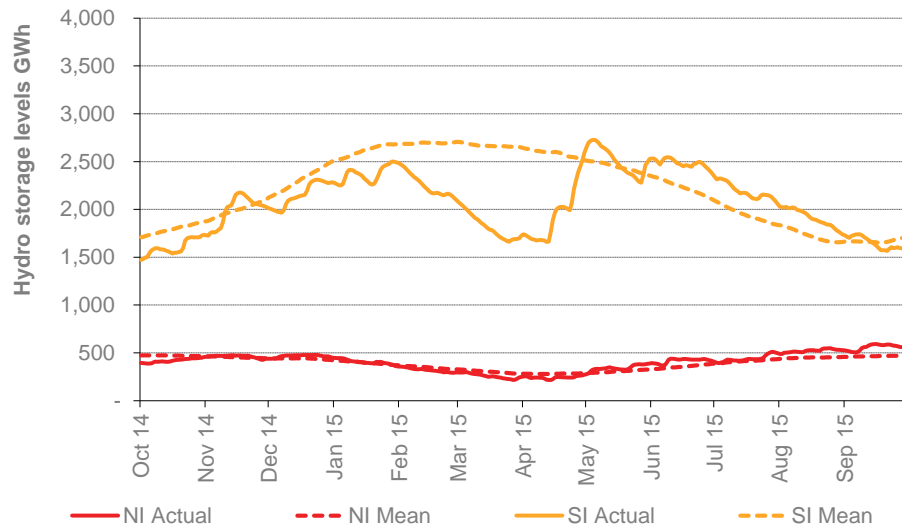
# Storage levels and wholesale electricity prices

4

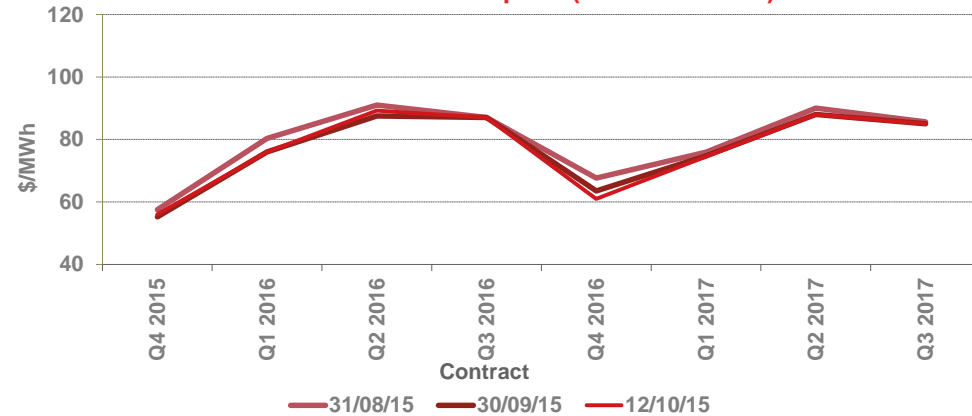
September 2015

- At 30 September, South Island storage was 94% of mean (31 August: 104%) and North Island storage was 127% of mean (31 August: 121%)
- As at 13 October 2015, storage was:
  - South Island: 93% of mean
  - North Island: 116% of mean

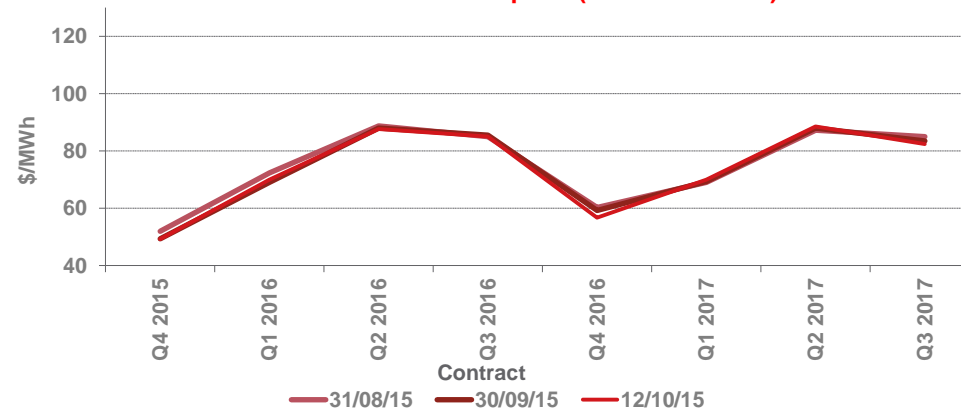
Hydro storage



Otago futures settlement price (ASX settlement)



Benmore futures settlement price (ASX settlement)

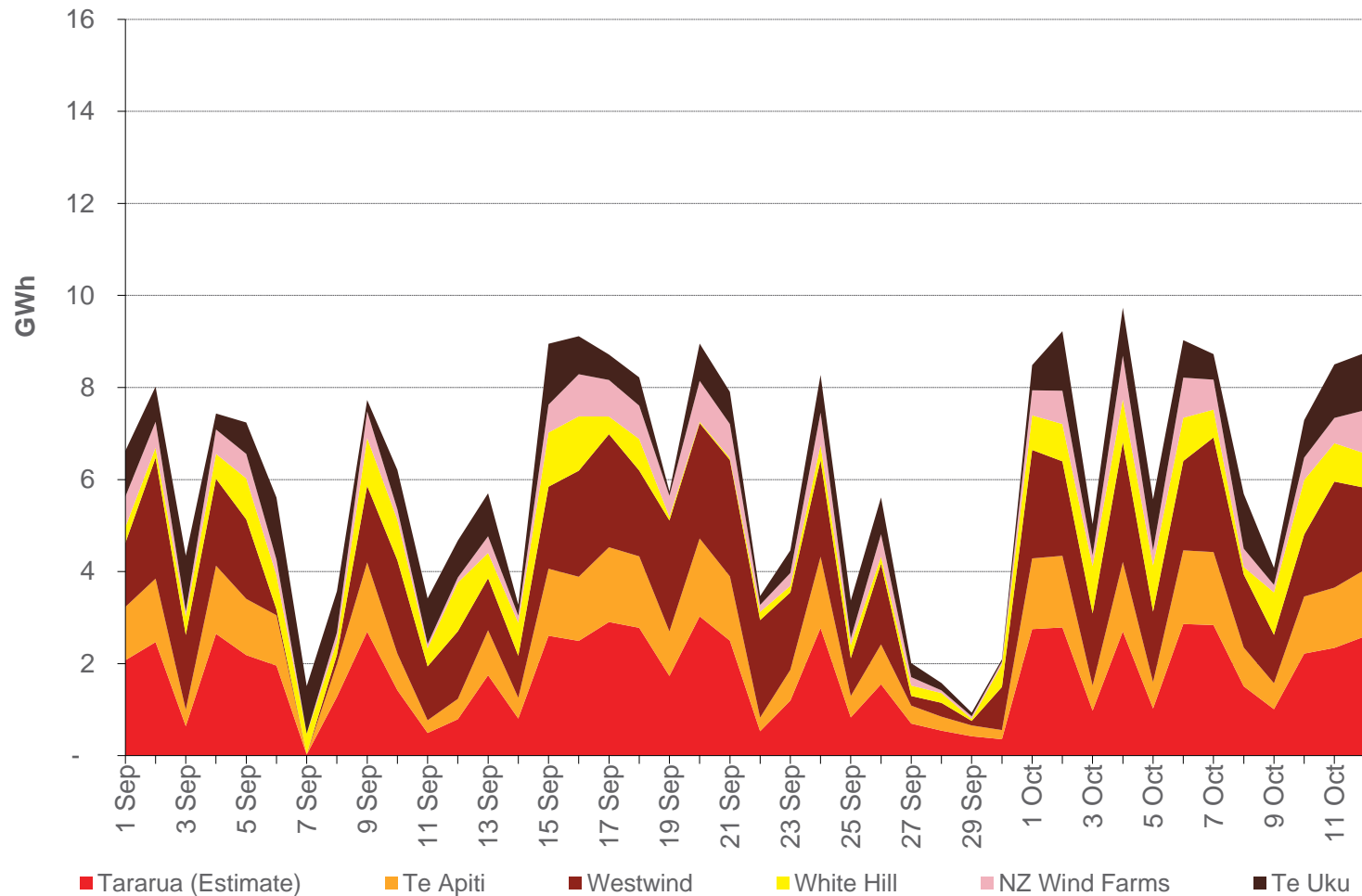


# Wind generation

5

September 2015

Daily wind generation (SCADA)



# Monthly demand comparison

6

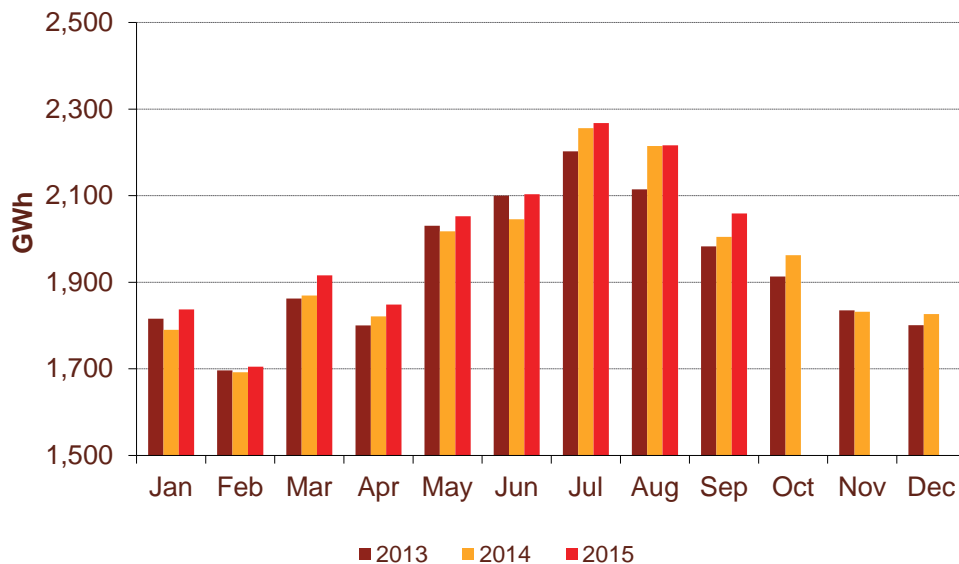
September 2015

## • NIWA's national climate summary for September 2015 reports:

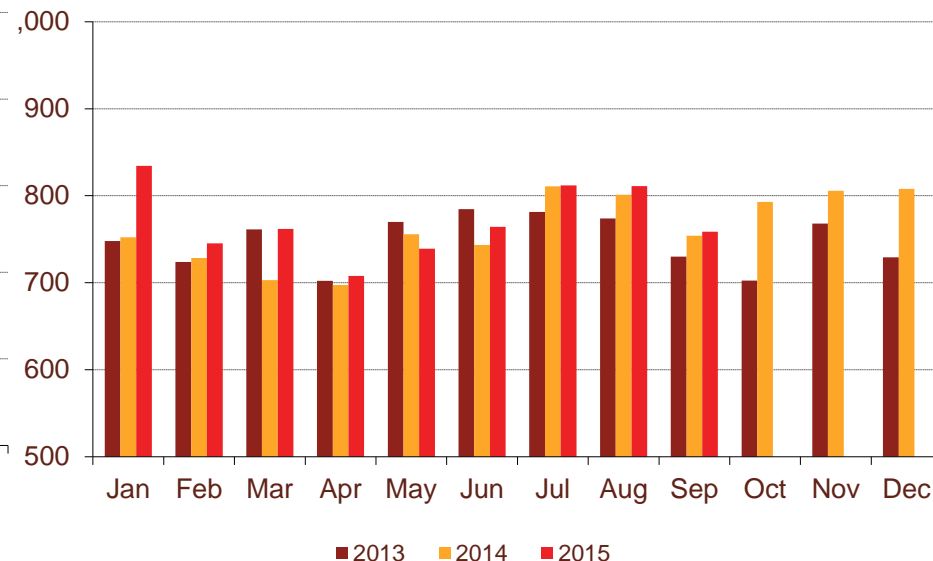
- The New Zealand national average temperature in September was 9.8°C (0.9°C below the 1981-2010 average)

Demand	September demand GWh			Growth rate % p.a.		12 months to date GWh			Growth rate % p.a.	
	2015	2014	2013	1 year	2 year	2015	2014	2013	1 year	2 year
North Island	2,059	2,005	1,983	2.7%	1.9%	23,627	23,260	23,323	1.6%	0.6%
South Island excluding Tiwai	759	754	730	0.6%	1.9%	9,340	8,946	8,950	4.4%	2.2%
<b>Total</b>	<b>2,818</b>	<b>2,759</b>	<b>2,713</b>	<b>2.1%</b>	<b>1.9%</b>	<b>32,967</b>	<b>32,206</b>	<b>32,273</b>	<b>2.4%</b>	<b>1.1%</b>

North Island



South Island excluding Tiwai



# Contact Netback, Cost of Energy and LPG Data

7

September 2015

Data		Measure	The month ended September 2015	The month ended September 2014	The month ended August 2015	Three months ended September 2015	Three months ended September 2014
Netback	Mass market electricity sales	GWh	359	351	404	1,181	1,182
	Commercial & industrial electricity sales	GWh	314	374	322	953	1,100
	Retail gas sales	GWh	69	65	84	241	230
	Steam sales	GWh	67	69	70	175	170
	Total retail sales	GWh	810	859	880	2,550	2,681
	Average electricity sales price	\$/MWh	185.62	177.28	193.67	191.84	188.99
	Electricity direct pass through costs	\$/MWh	(78.72)	(80.95)	(77.69)	(78.92)	(77.38)
	Electricity and gas cost to serve	\$/MWh	(14.84)	(13.07)	(13.98)	(13.89)	(11.77)
	Netback	\$/MWh	82.15	75.16	90.28	88.09	89.30
	Electricity line losses	%	4%	5%	5%	6%	6%
	Retail gas sales	PJ	0.2	0.2	0.3	0.8	0.8
	Electricity customer numbers <sup>1</sup>	#	424,500	436,000	427,000		
	Gas customer numbers <sup>1</sup>	#	61,000	62,500	61,500		
Cost of energy	Thermal generation	GWh	254	273	236	722	541
	Geothermal generation	GWh	264	216	293	832	782
	Hydro generation	GWh	250	243	339	973	1,116
	Spot market generation	GWh	768	733	868	2,526	2,439
	Spot electricity purchases	GWh	692	751	751	2,239	2,399
	CfD sales	GWh	26	(20)	18	67	(12)
	GWAP	\$/MWh	57.02	56.53	52.91	53.62	60.52
	LWAP	\$/MWh	(60.34)	(57.17)	(55.53)	(57.03)	(66.26)
	LWAP/GWAP	%	106%	101%	105%	106%	109%
	Gas used in internal generation	PJ	2.2	2.3	2.0	6.3	5.0
	Wholesale gas sales	PJ	0.0	0.3	0.0	0.0	0.4
	Gas storage net movement	PJ	(0.4)	(0.1)	(0.4)	(1.2)	0.8
	Unit generation cost	\$/MWh	(43.45)	(49.00)	(36.94)	(38.31)	(36.50)
	Cost of energy	\$/MWh	(40.47)	(44.06)	(34.40)	(36.85)	(36.96)
	LPG	LPG sales	tonnes	6,502	6,064	7,158	21,336
LPG customer numbers (includes franchises) <sup>1</sup>		#	71,500	67,500	71,000		

<sup>1</sup> Data has been rounded to the nearest 500 and reflects numbers as at month end.