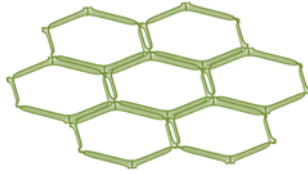


OAKDALE RESOURCES LIMITED

ACN 009 118 861

8 Maud Street, Newstead
Qld 4006
PO Box 3199 Newstead
Qld 4006



Phone: (07) 3624 8188
Fax: (07) 3624 8133
Email: info@oakdaleresources.com.au
Web: oakdaleresources.com.au

17 November 2015

ASX ANNOUNCEMENT

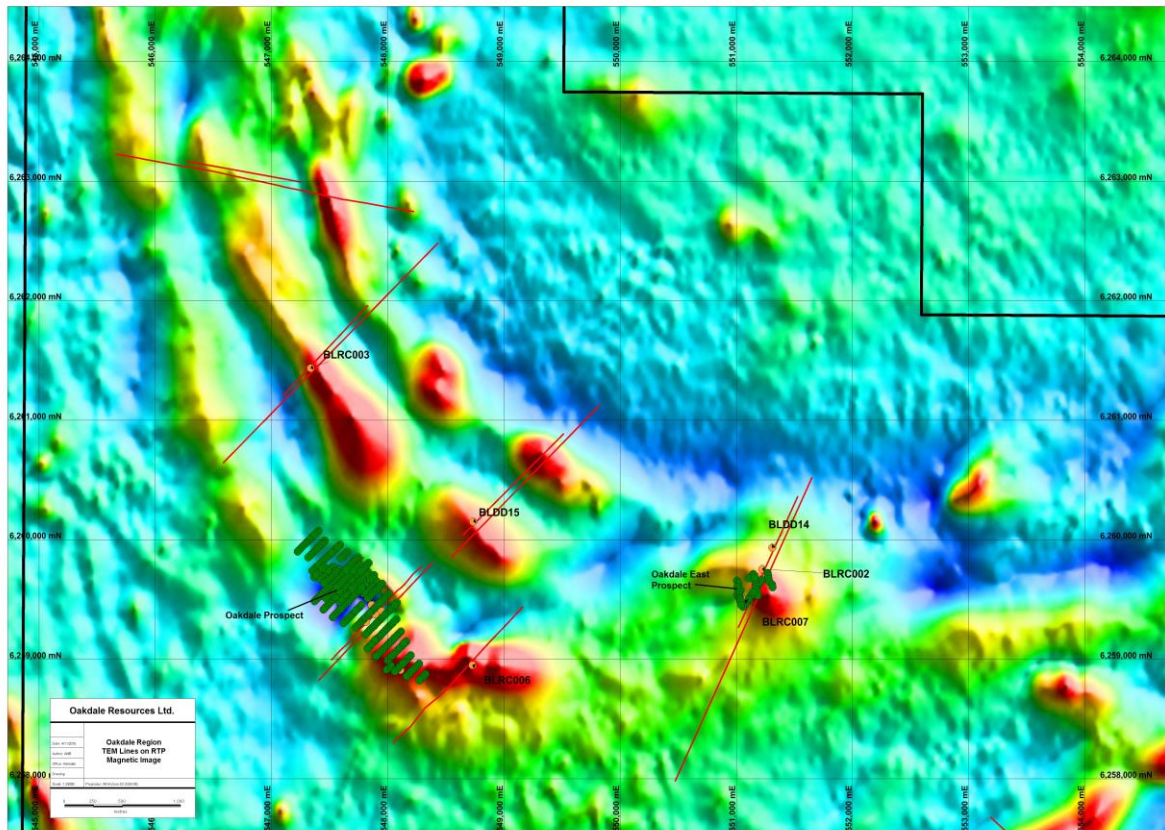
ADDITIONAL GRAPHITE POTENTIAL AT OAKDALE NORTH

Highlights

- Diamond Drill Hole BLDD15 assayed for Total Graphitic Content
- Assays demonstrate that the graphite occurs over 39% of the drill hole (ie. over 50 metres at an interval of 129 metres)
- Assays received average 6.6% Total Graphitic Content

Diamond drill hole BLDD15, approximately one kilometre north of the primary Oakdale project area, previously drilled in 2007 has been assayed for Total Graphitic Carbon (“**TGC**”). These assays demonstrate that the graphite occurs over 39% of the drill hole, that is over 50 metres in an overall interval of 129 metres and assays received are as follows and average 6.6% TGC

From	To	Interval	TGC%
124.12	126.60	2.48	8.99
129.90	136.45	6.55	11.73
142.40	143.74	1.34	12.20
146.90	156.30	9.40	8.42
161.40	162.60	1.20	4.95
168.05	169.60	1.55	8.65
172.30	186.00	13.70	4.76
204.10	207.05	2.95	5.27
239.80	241.80	2.00	7.80
244.64	253.30	8.66	2.14



BLDD15 in relation to Oakdale North

For further information please contact John Lynch on (07) 3624 8188

Yours faithfully

John E Lynch
B.Sc (Sydney) M.Sc. (James Cook) FAICD and FAIMM
Managing Director

Competent Person's Statement

The information in this ASX Announcement for Oakdale Resources Limited was compiled by Mr John Lynch who is a member of the Australian Institute of Geoscientists and Fellow of the Australasian Institute of Mining and Metallurgy. John Lynch has sufficient experience, which is relevant to the styles of mineralisation and types of deposits under consideration and to the activity to which he is undertaking to qualify as a "Competent Person" as defined in the 2012 Edition of the "Australasian Code for Reporting of Exploration Results, Mineral Resources and Ore Reserves".