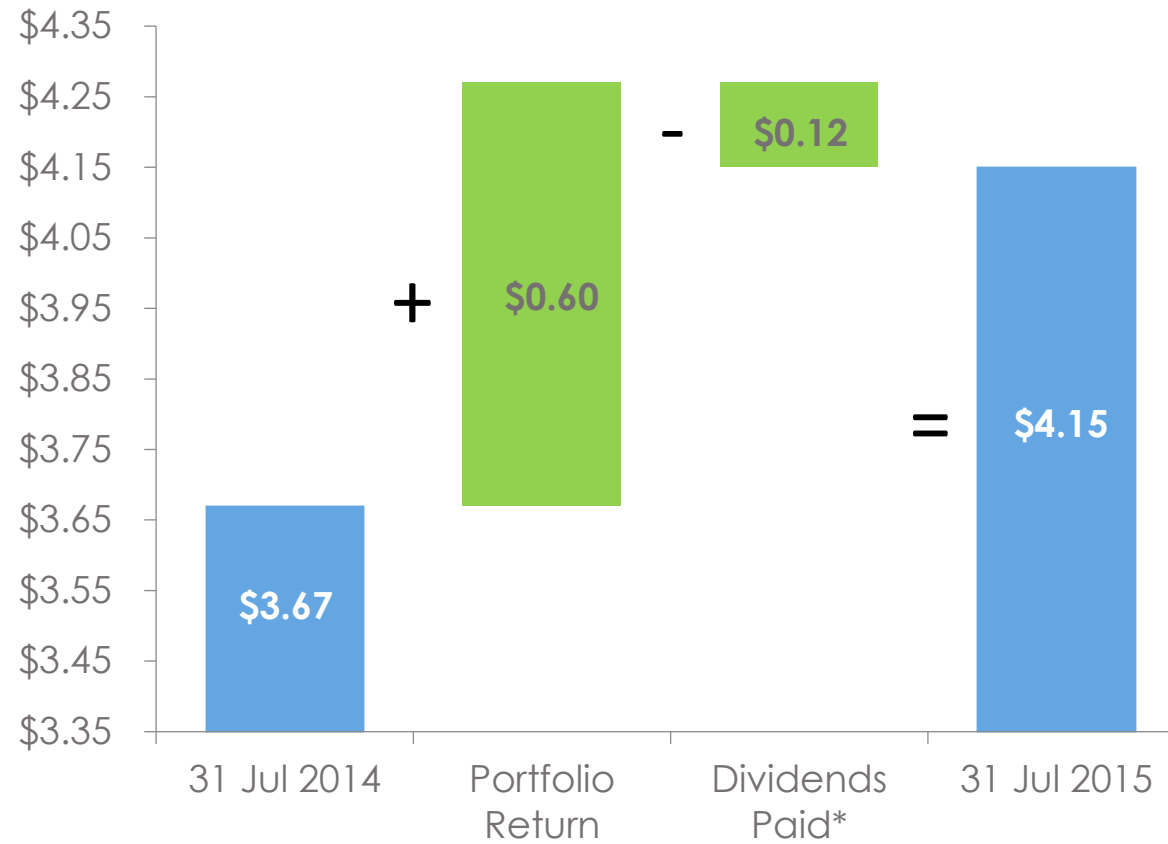




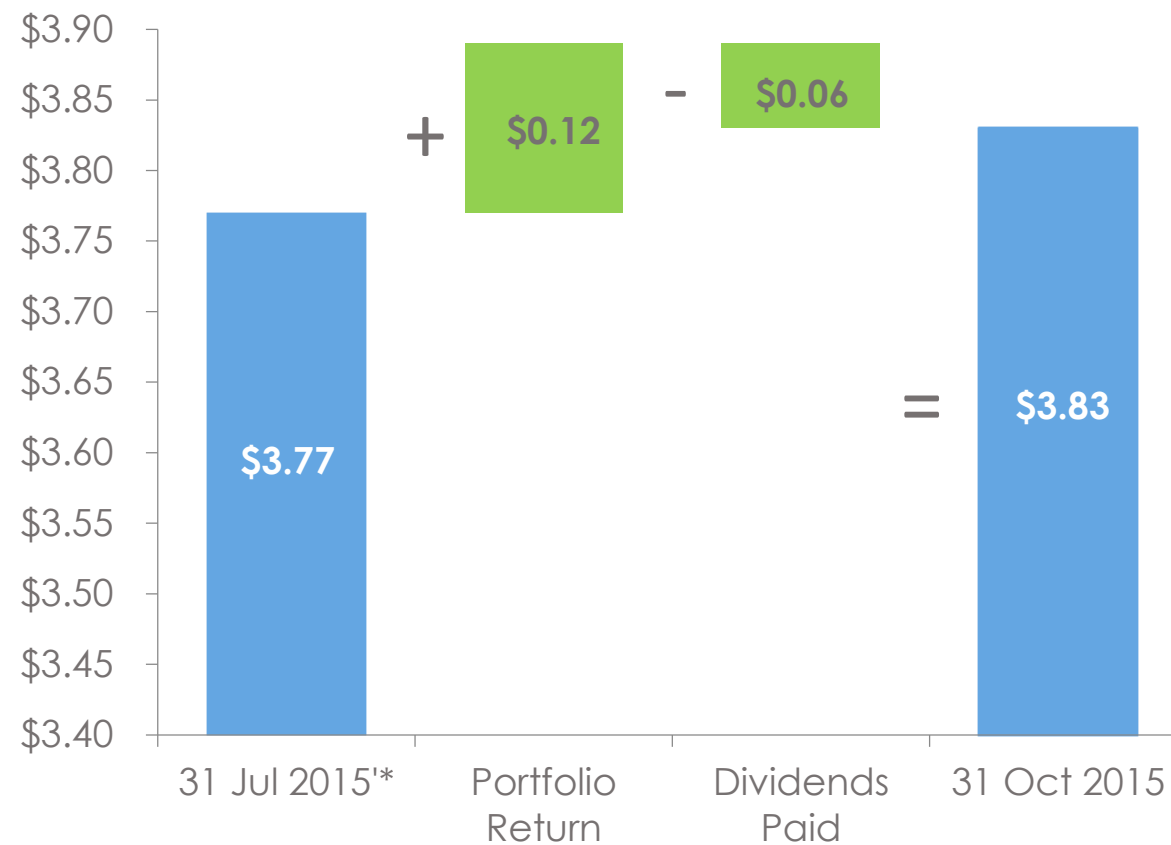
# 147<sup>th</sup> Annual General Meeting

19 November 2015

## 2015 AGM | 16.3% Total Shareholder Return during FY 2015

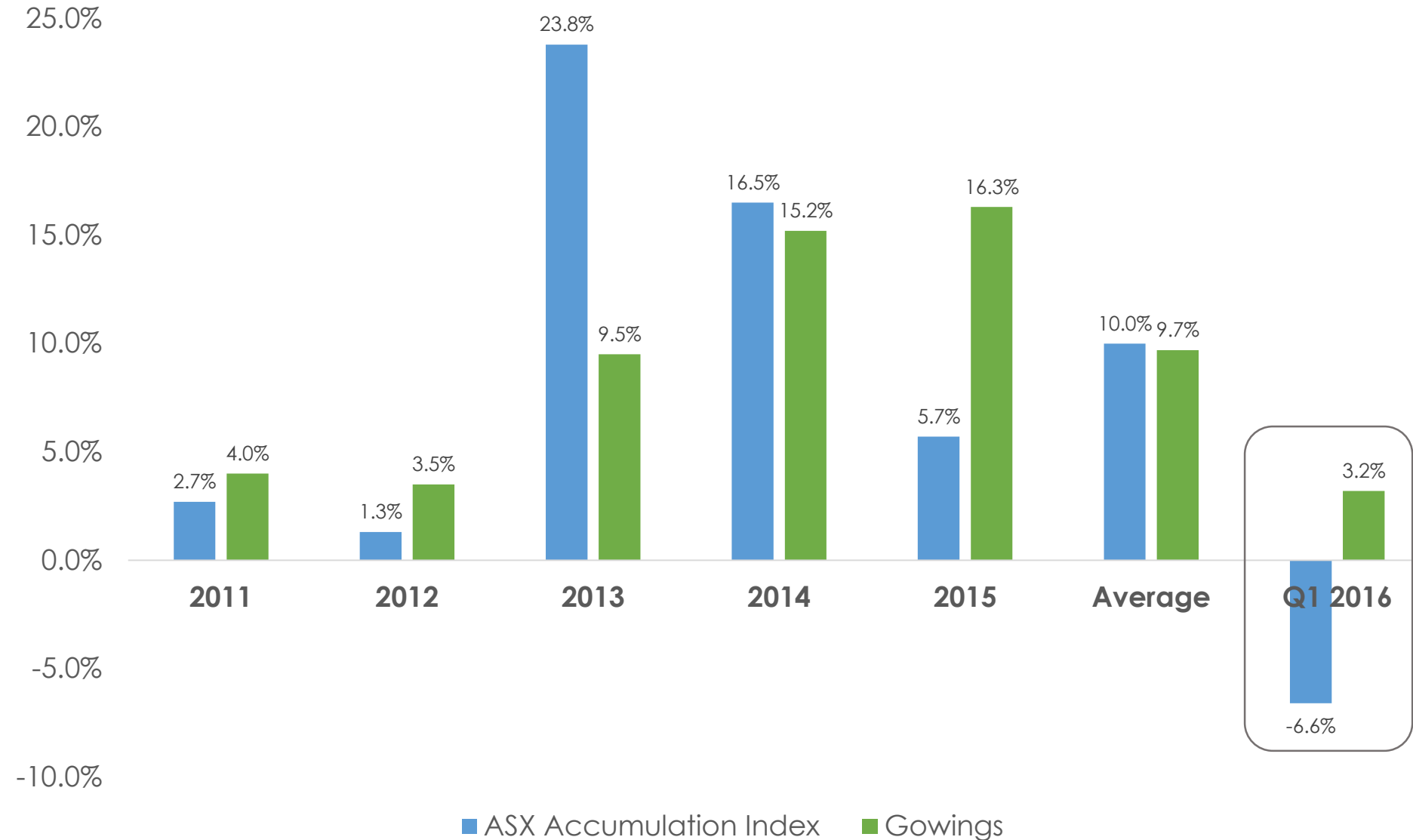


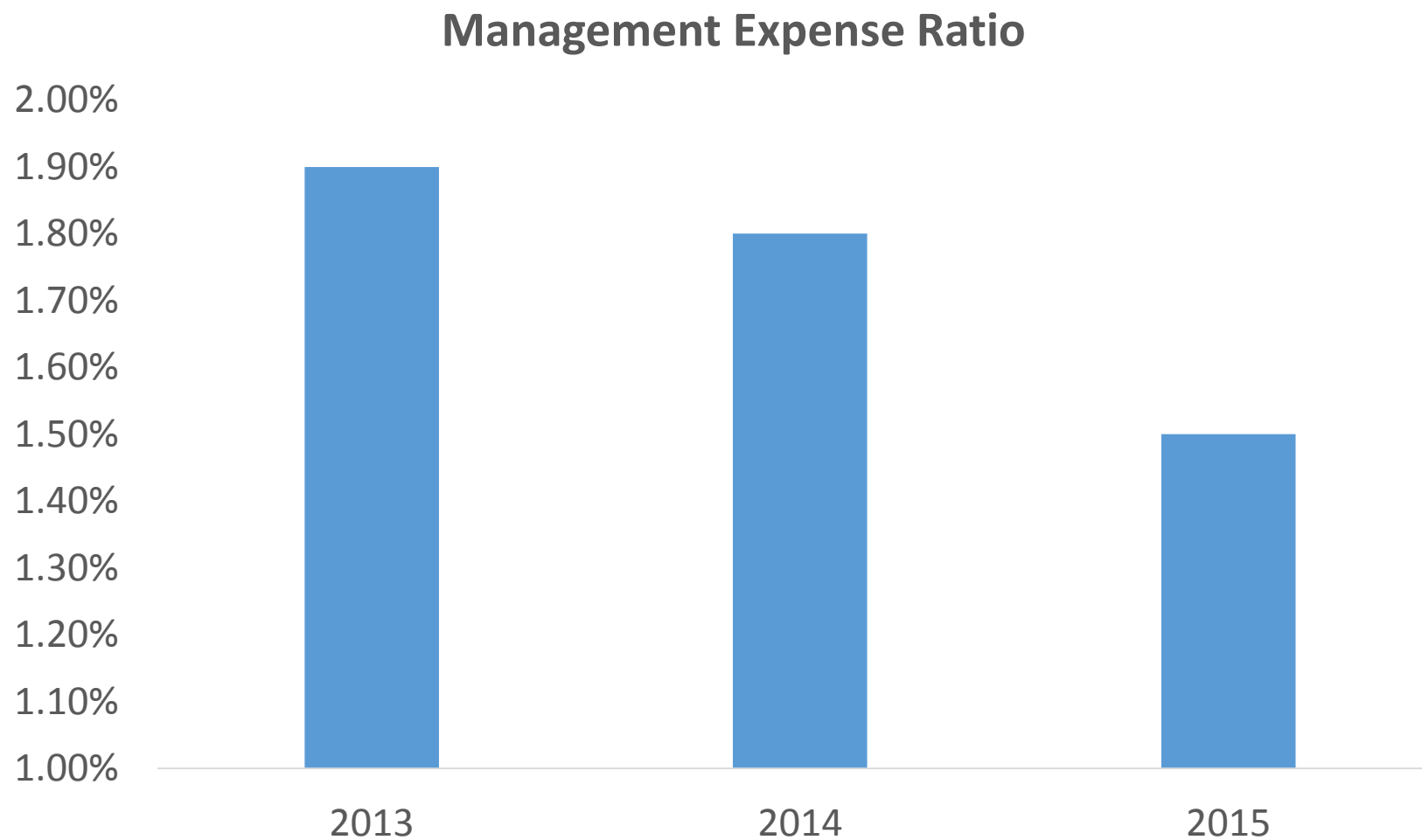
## 2015 AGM | 3.2% Total Shareholder Return during Q1 2016 *(unaudited)*



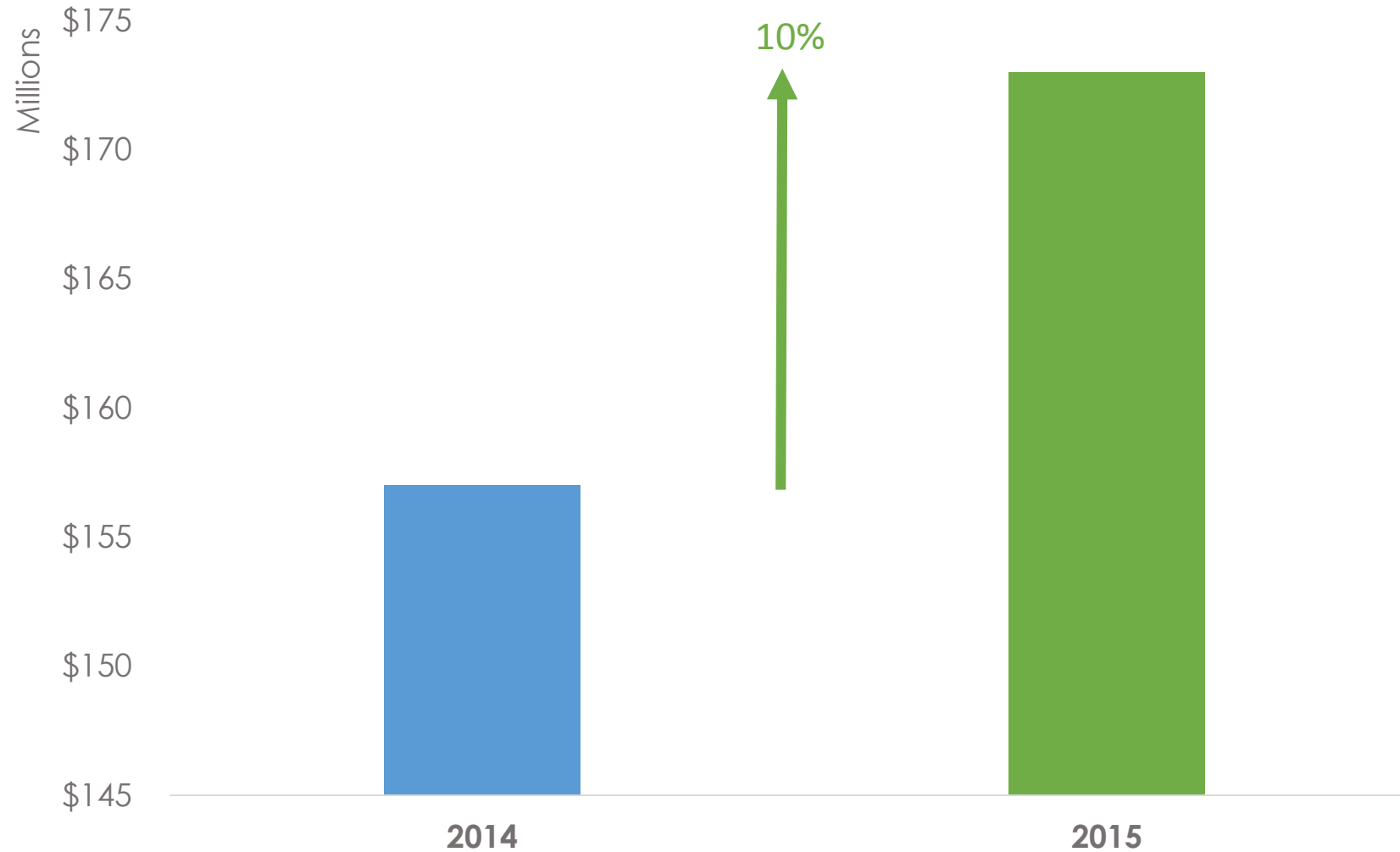
\* 31 July 2015 adjusted for 1:10 bonus share issue

## 2015 AGM | 5 Year Performance and First Quarter Return





## 2015 AGM | Pacific Coast Shopping Centre Portfolio



## 2015 AGM | Pacific Coast Shopping Centres



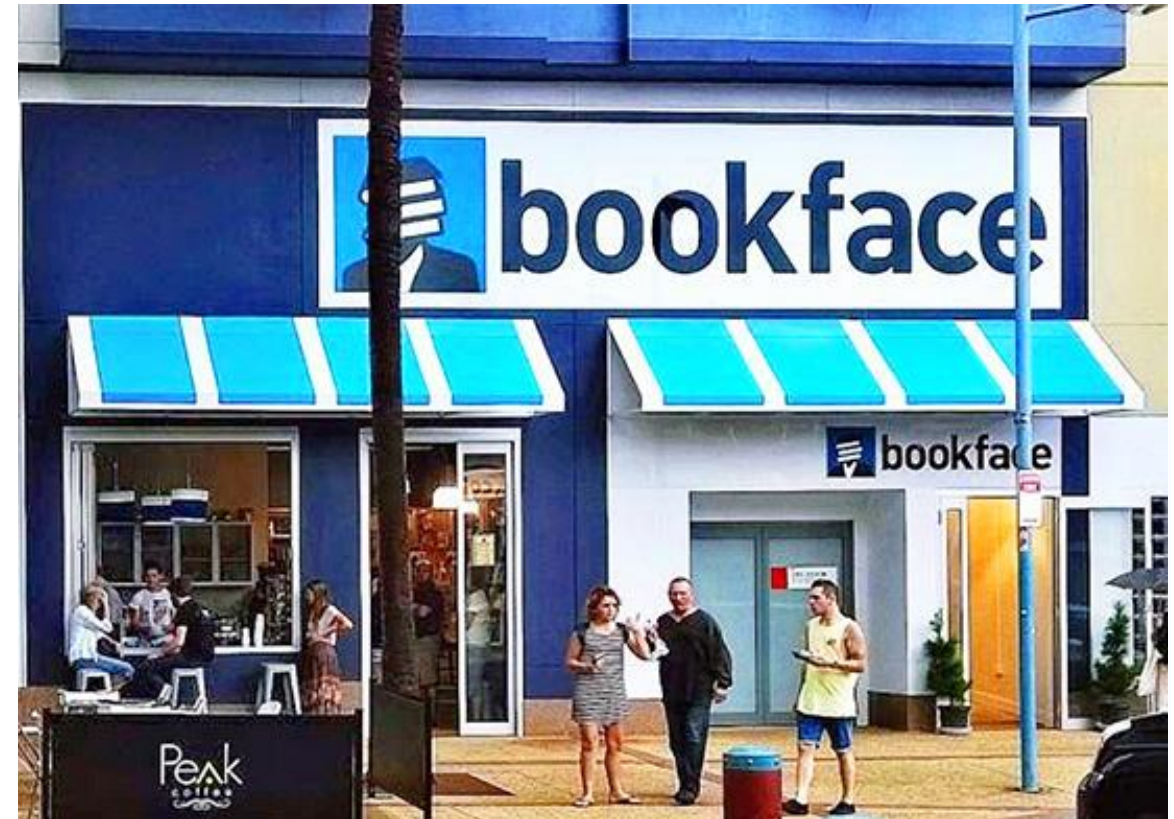
### PORT CENTRAL

Strong growth in foot traffic and retail sales

Vacancies reduced to 3 (2014: 4)

New retailers include Bookface

Various development options under review



## 2015 AGM | Pacific Coast Shopping Centres



### COFFS CENTRAL

Stable specialty sales despite weaker foot traffic

\$3 million upgrade of the carpark completed

Development approval to extend shopping centre

Development approval to reconfigure level 1

Council approved Town Square upgrade for 2016





## 2015 AGM | Pacific Coast Shopping Centres





## 2015 AGM | Pacific Coast Shopping Centres





## 2015 AGM | Pacific Coast Shopping Centres







### KEMPSEY CENTRAL

Strong growth in sales of the centre

Council upgrade of high street

Council has applied for a grant to establish a cinema



## 2015 AGM | Pacific Coast Shopping Centres



### MOONEE MARKETPLACE

Sales impacted by opening of competitor in Woolgoolga

New retailers include Coffs Coast Health Club, Poolwerx

Significant leasing campaign initiated

Capital works program to upgrade the centre

Ongoing negotiations to establish a fuel pad

Significant growth of surrounding residential estates





# 2015 AGM | Questions

