



## SOVEREIGN GOLD COMPANY LIMITED

Sovereign Gold Company Limited  
ACN 145 184 667

Level 2, 131 Macquarie Street  
Sydney NSW 2000  
Tel: +61 2 9251 7177  
Fax: +61 2 9251 7500

email: [corporate@sovereigngold.com.au](mailto:corporate@sovereigngold.com.au)

### Latest News

[www.sovereigngold.com.au](http://www.sovereigngold.com.au)

### Directors / Officers

Simon Bird  
Managing Director

Patrick Glovac  
Non-Executive Director

Charles Thomas  
Non-Executive Director

Rocco Tassone  
Non-Executive Director

ASX Symbol: SOC

### Qualifying Statements

The information in this Report that relates to Exploration Information is based on information compiled by Michael Leu who is a member of The Australasian Institute of Mining and Metallurgy and the Australian Institute of Geoscientists.

Mr Leu is a qualified geologist and is a director of Sovereign Gold Company Limited.

Mr Leu has sufficient experience, which is relevant to the style of mineralisation and type of deposit under consideration and to the activity, which he is undertaking to qualify as a Competent Person as defined in the 2012 Edition of the Australasian Code for Reporting of Exploration Results, Mineral Resources and Ore Resources. Mr Leu consents to the inclusion in this announcement of the Exploration Information in the form and context in which it appears.

ASX Release  
11 February 2016

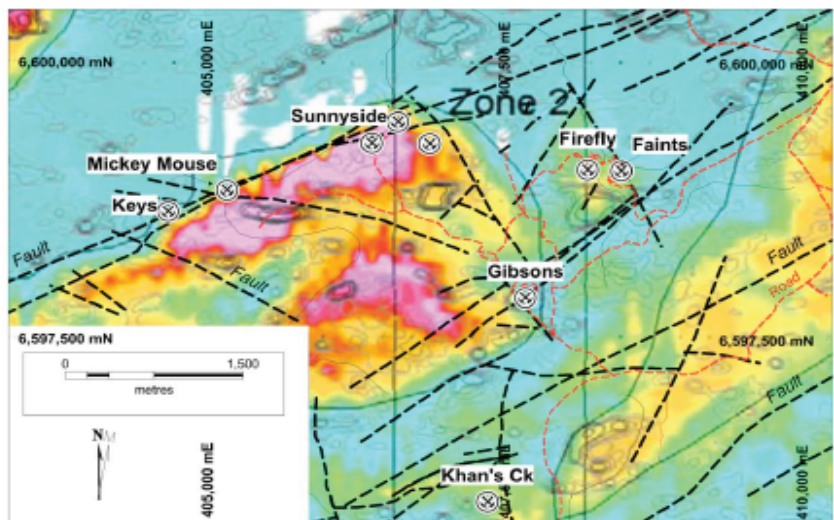
### Halls Peak Cooperative Drilling Update

- NSW Government extended the New Frontiers Cooperative Drilling programme to April 2016, pending finalisation of land access
- All land access agreements have now been finalised
- An initial 1,200 metres of diamond drilling is planned for Halls Peak
- Testing to target deep conductor discovered with Heliborne VTEM survey\*
- Discussions with a number of interested parties continue regarding a potential transaction intended to deliver upside for shareholders

Land access arrangements have now been finalised to enable the New Frontiers Cooperative Drilling to proceed. An extension to April 2016 was granted to permit land access arrangements to be finalised.

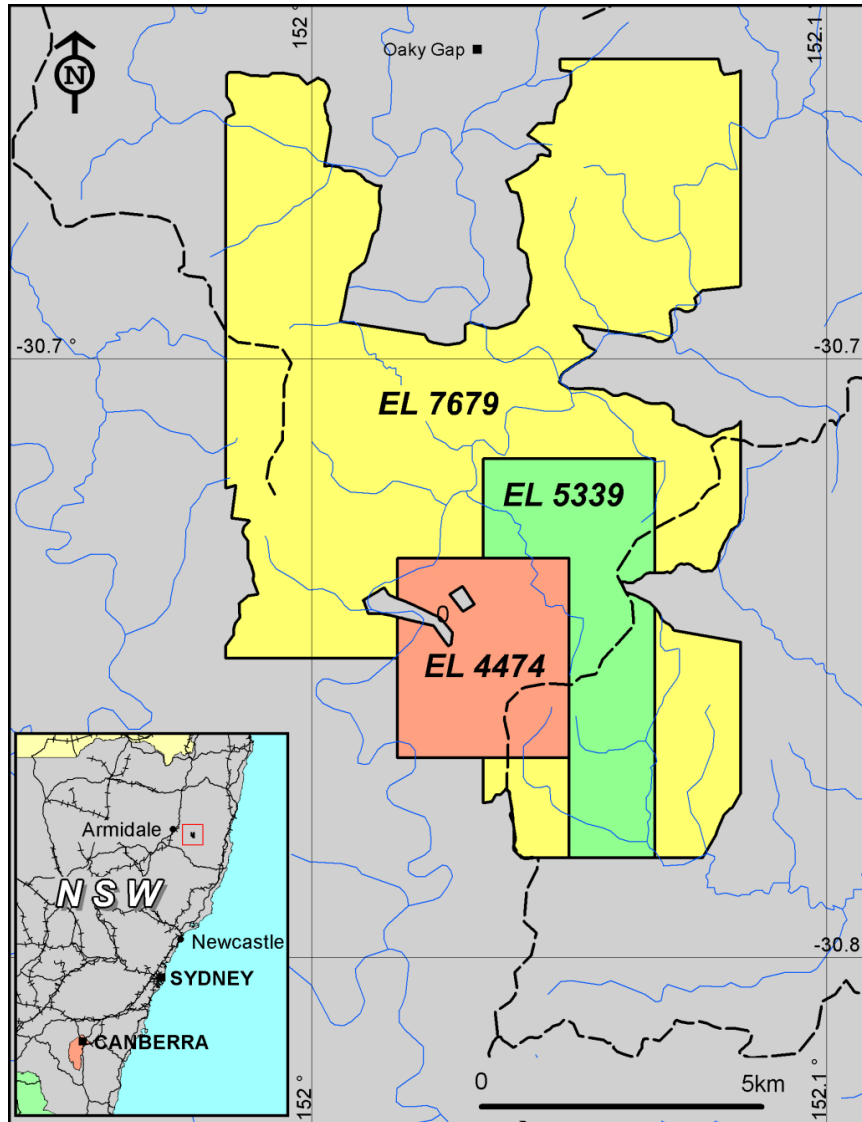
Previously flown Heliborne VTEM (Versatile Time Domain Electromagnetic) survey detected deep conductive zones that have potential to contain continuous flat lying zinc-lead-copper-silver bearing beds.

The deep conductor to be tested is depicted in red on figure below.



- Long term Zinc outlook positive, declining production levels and the lack of genuine development opportunities
- Right geological setting, Halls Peak base metal province located in an area (4 x 5km) of historic high grade massive sulphide mines
- Several shallow, small high grade massive sulphide bodies already discovered
- Halls Peak has potential to host a large base metal deposit
- Flat lying VTEM conductor around the old Sunnyside Mine fits a typical SEDEX deposit model. Consultant Geophysicists interpret this conductor to host sulphides
- Confidence exists that the VTEM survey has potentially located sulphide deposition but economic grades and tonnage yet to be proven

\* ASX: PMR 10/9/2012



The Halls Peak Tenements are located 80km SE of Armidale N.S.W.

**For further information please contact:**

Rocco Tassone, Director  
Sovereign Gold Company Limited,  
Telephone: +61 2 9251 7177