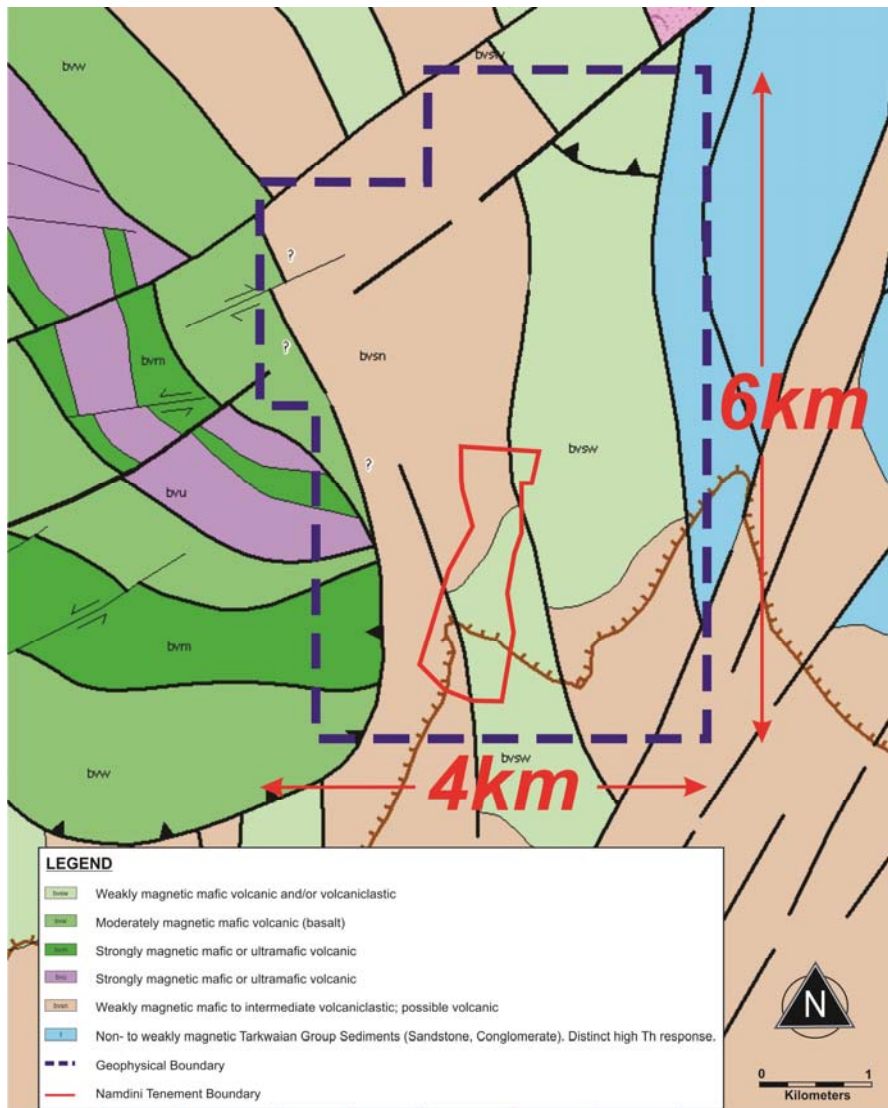


13 April 2016

## STRIKE EXTENSION GROUND GEOPHYSICS BEGINS AT NAMDINI

### HIGHLIGHTS

- **Namdini Surveys** designed to gain direct targeting information to locate further gold mineralisation along strike
  - 24 sq km survey area around Namdini discovery site (Figure 1)
- **Kungongo Surveys** designed to generate drill targets over prospective Bole-Bolgatanga Shear Zone
  - 14 sq km survey area over NE-SW regional shear zone (Figure 2)
- **Southern Geoscience Consultants (SGC)**, of Perth Western Australia, contracted to oversee ground geophysical surveys over Namdini and Kungongo



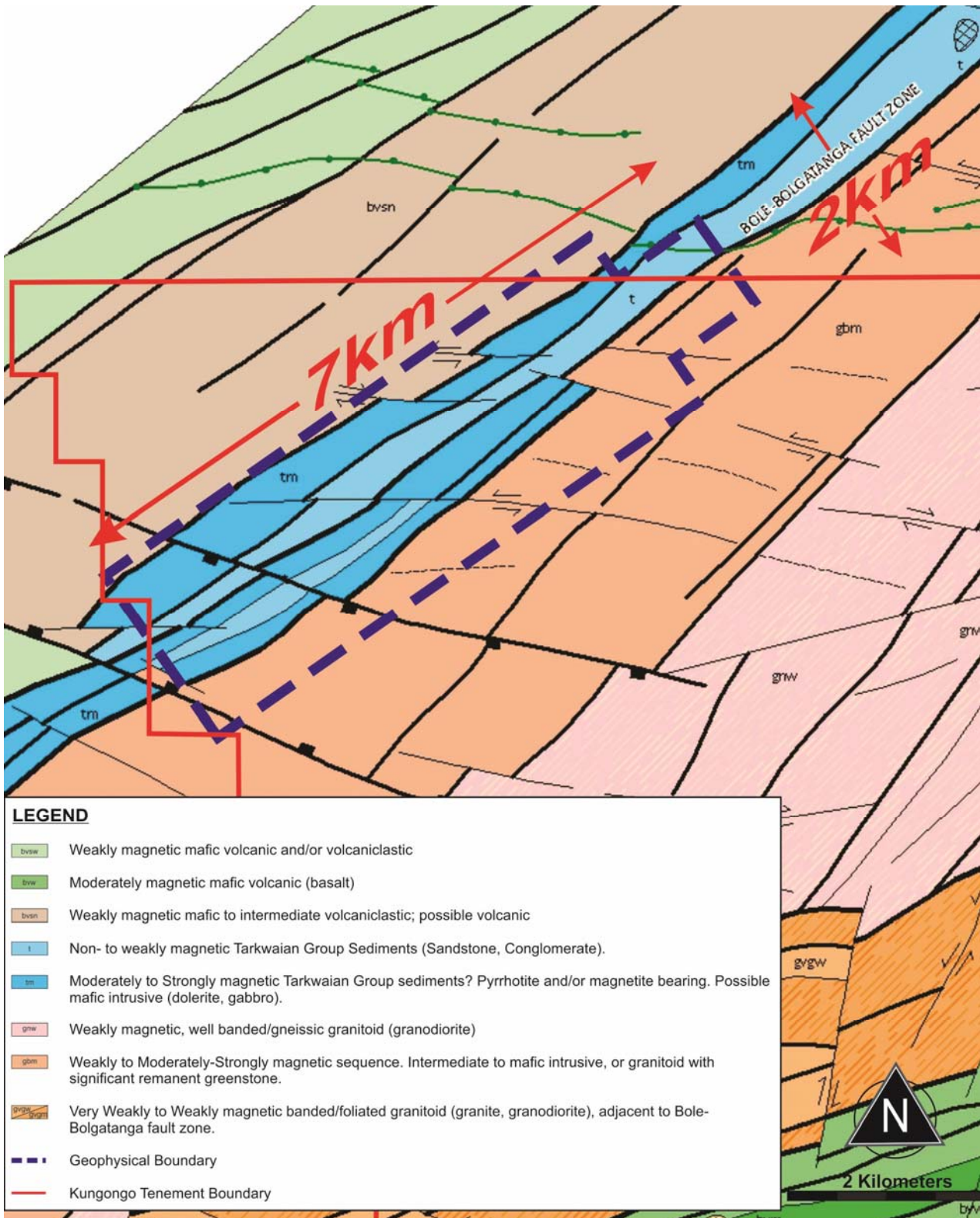
**Figure 1: Namdini Project - Planned ground geophysical survey area**

**Cardinal Resources Limited ABN 56 147 325 620**

[www.cardinalresources.com.au](http://www.cardinalresources.com.au)

**Ghana:** Durugu Residential Area, Kumbosco, Bolgatanga, Ghana P: +233 (0) 261905220 SKYPE: cardinal.archie

**Australia:** Level 1, 115 Cambridge Street, West Leederville, Perth, 6007 P: +61 (8) 9322 6600 F: +61 (8) 9322 6610



**Figure 2: Kungongo Tenement - Planned ground geophysical survey area**

**Cardinal Resources Limited** (ASX: CDV) (“**Cardinal**” or “**the Company**”) announces that Southern Geoscience Consultants (SGC) Perth were contracted to design and carry out ground geophysical surveys over the Namdini Project and the Kungongo Tenement within the Bolgatanga area.

#### **Southern Geoscience Consultants**

- SGC designed Gradient Array Induced Polarisation (GAIP) and Ground Magnetic (GMAG) surveys over both the Namdini Project and Kungongo Tenement areas
- SGC will do Quality Control, processing and interpretation of all GAIP and GMAG data
- SGC awarded ground geophysical contract to Terratec Geophysical Services (TGS), of Heitersheim, Germany
- TGS have mobilised and started GAIP surveys over Namdini

#### **Ground Geophysical Surveys**

GAIP surveys will provide indications of conductive graphitic horizons (often shear zones), chargeable disseminated sulphide accumulations (as seen at Namdini), and conductive or resistive alteration zones.

GMAG surveys will provide structural and lithological information to help define new targets as well as to advance the understanding of the geology for existing mineralisation.

#### **Namdini Project**

The ground geophysical surveys will cover an enlarged area of approximately 24 sq kms around the gold mineralised Namdini discovery site to provide geological and structural information which should generate more drill targets to extend the gold potential of the Namdini Project (Figure 1).

#### **Kungongo Tenement**

The ground geophysical surveys will cover an area of approximately 14 sq kms over the portion of the NE-SW regional Bole-Bolgatanga Fault (Shear) Zone located within the NW part of this tenement. These surveys are intended to provide geological and structural information to generate drill targets over this prospective shear zone (Figure 2).

For further information contact:

Archie Koimtsidis  
Managing Director  
**Cardinal Resources Limited**  
P: +233 (0)26 190 5220  
Skype: cardinal.archie

**Cardinal Resources Limited ABN 56 147 325 620**

[www.cardinalresources.com.au](http://www.cardinalresources.com.au)

**Ghana:** Durugu Residential Area, Kumbosco, Bolgatanga, Ghana P: +233 (0) 261905220 SKYPE: cardinal.archie

**Australia:** Level 1, 115 Cambridge Street, West Leederville, Perth, 6007 P: +61 (8) 9322 6600 F: +61 (8) 9322 6610