

3	28	79
Li	Ni	Au
6.941	58.69	196.967



Targeting Key Global Demand-driven Commodities




The Mining 2016 Resources Convention
Brisbane August 2016

David Crook
Managing Director



Disclaimer and Competent Person's Statement



- This presentation is provided to you for the sole purpose of providing preliminary background technical, financial and other information to enable you to review the business activities of Pioneer Resources Limited ("Pioneer" or "the Company").
- The material provided to you does not constitute an invitation, solicitation, recommendation or an offer to purchase or subscribe for securities.
- This presentation may contain "forward looking statements" which are made in good faith and are believed to have reasonable basis. However, such forward looking statements are subject to risks, uncertainties and other factors which could cause the actual results to differ materially from the future results expressed, projected or implied by forward looking statements.
- The information within this report was compiled by Mr. David Crook who is a full time employee of Pioneer Resources Limited, a member of The Australasian Institute of Mining and Metallurgy (member 105893) and is a Competent Person as defined by the 2012 JORC Code, having five years experience which is relevant to the type of activities described in the Report. This person consents to the inclusion of this information in the form and context in which it appears in this report.

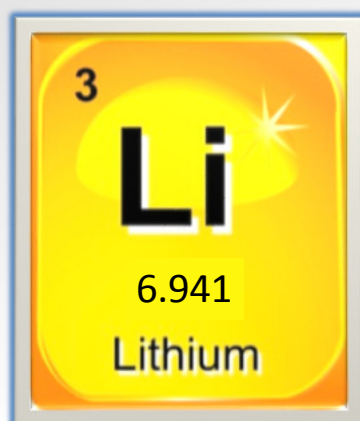
For further information

- (Acra) refer to the Company's announcements dated 16 April 2014, 22 October 2014, 26 June 2015, 6 October 2015, 18 December 2015, 15 February 2016.
- (Mavis/ Raleigh) refer to the Company's announcements dated 15 March, 20 April, 13 July 2016
- (Phillips River) refer to the Company's announcements dated 6 April 2016
- (Donnelly River) refer to the Company's announcements dated 26 April 2016
- (Pioneer Dome) refer to the Company's announcements dated 29 April, 18 May, 27 July 2016
- Also refer to the Company's quarterly Activities Reports.
- The Company is not aware of any new information or data that materially affects the information included in this Presentation

What has changed between 2015 and 2016

Pioneer
RESOURCES LIMITED

3	28	79
Li	Ni	Au
6.941	58.69	196.967



Today's Presentation

Pioneer
RESOURCES LIMITED

3	28	79
Li	Ni	Au
6.941	58.69	196.967

- **Key global demand driven commodities**
- **A bit about Pioneer**
- **Our Lithium Projects**
- **Other Projects**



Lithium Strategy

Pioneer
RESOURCES LIMITED

3	28	79
Li	Ni	Au
6.941	58.69	196.967

*Everyone's talking about Lithium...
and they should be*
"It's the next gasoline."
Brian Colwell

**Total to Buy Battery Maker
Saft in Push to Expand Clean
Energy**

The Lithium Market Today

Pioneer
RESOURCES LIMITED

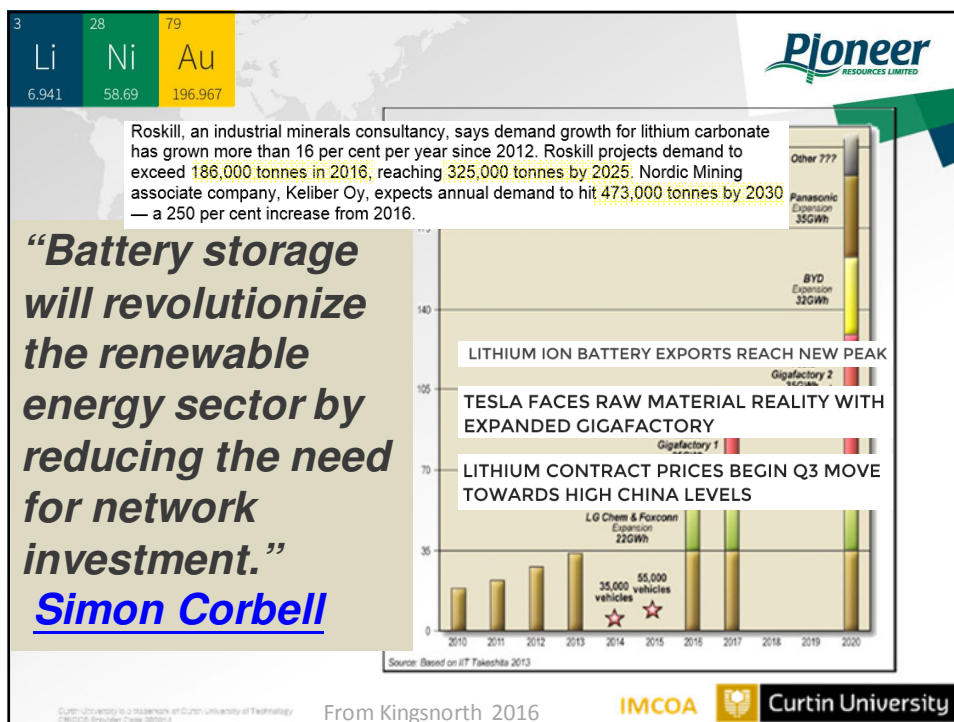
3	28	79
Li	Ni	Au
6.941	58.69	196.967

- Estimated demand 2015 : ~160,00ktpa LCE (2014: ~150 ktpa)
- Lithium Market 'Value': ~US\$900 million.
- Market could grow to 4-500ktpa in next decade.
- Brine sources are dominant supply at present.
- Time to construct and high capex of future brine production are creating opportunities for hard-rock projects.
- Australia is well-placed to play a significant role in future *downstream/value-add* production

Curtin University is a trademark of Curtin University of Technology
CRICOS Provider Code 00301J

From Kingsnorth 2016

IMCOA  Curtin University



Lithium Strategy

New Acquisitions

3 28 79
Li Ni Au
6.941 58.69 196.967

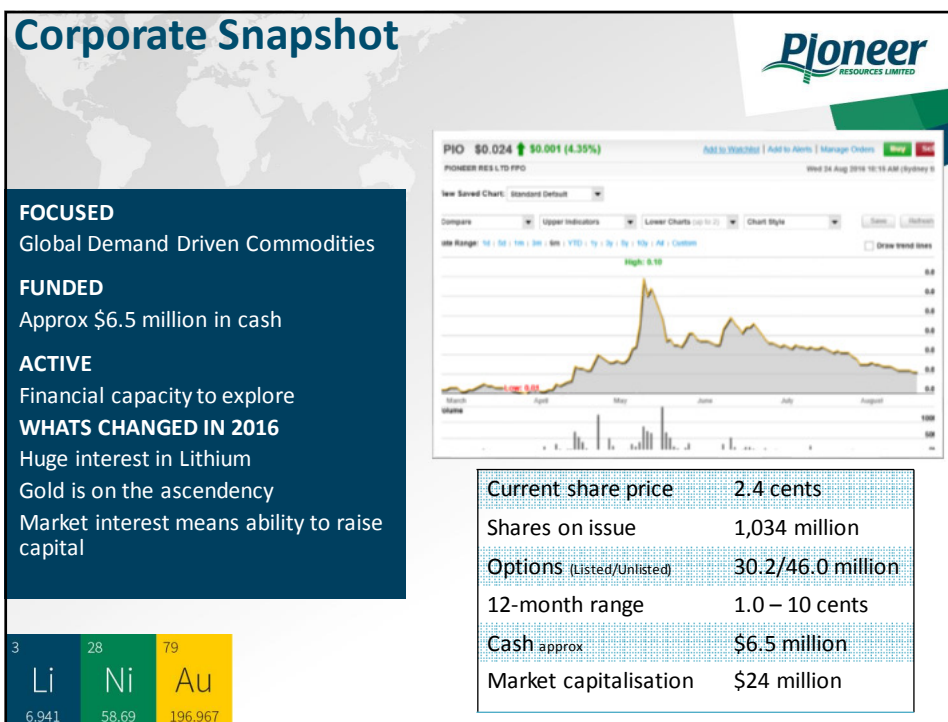
Pioneer
RESOURCES LIMITED

Mavis, Raleigh: Ontario Canada
Pegmatite Field – Spodumene in drilling

Pioneer Dome: Eastern Goldfields
Mt Marion – Pegmatite Li

Phillip River: Ravensthorpe
Mt Cattlin – Pegmatite Li

Donnelly River: Greenbushes
Greenbushes – worlds Largest Pegmatite Li



Four Types of Lithium Deposits

- Two main types of hard rock deposits-
(but there are others)

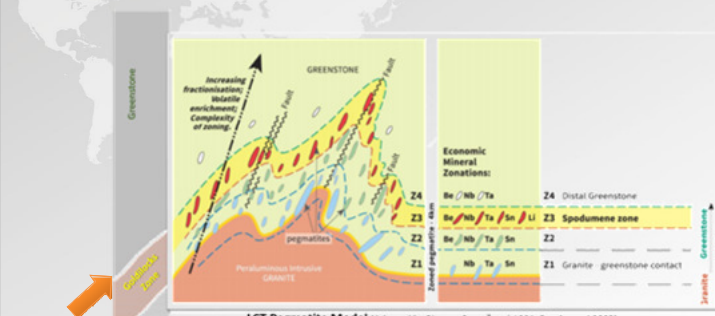




Spodumene

3	28	79
Li	Ni	Au
6.941	58.69	196.967

Lepidolite

LCT Pegmatites have a Structured Internal Zonation

Economic Mineral Zonations:

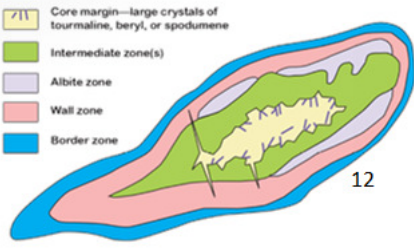
Zone	Minerals
Z4	Be / Nb / Ta
Z3	Be / Nb / Ta / Li
Z2	Be / Nb / Ta / Sn
Z1	Nb / Ta / Sn

Spodumene zone (Z3)

Granite-greenstone contact (Z1)

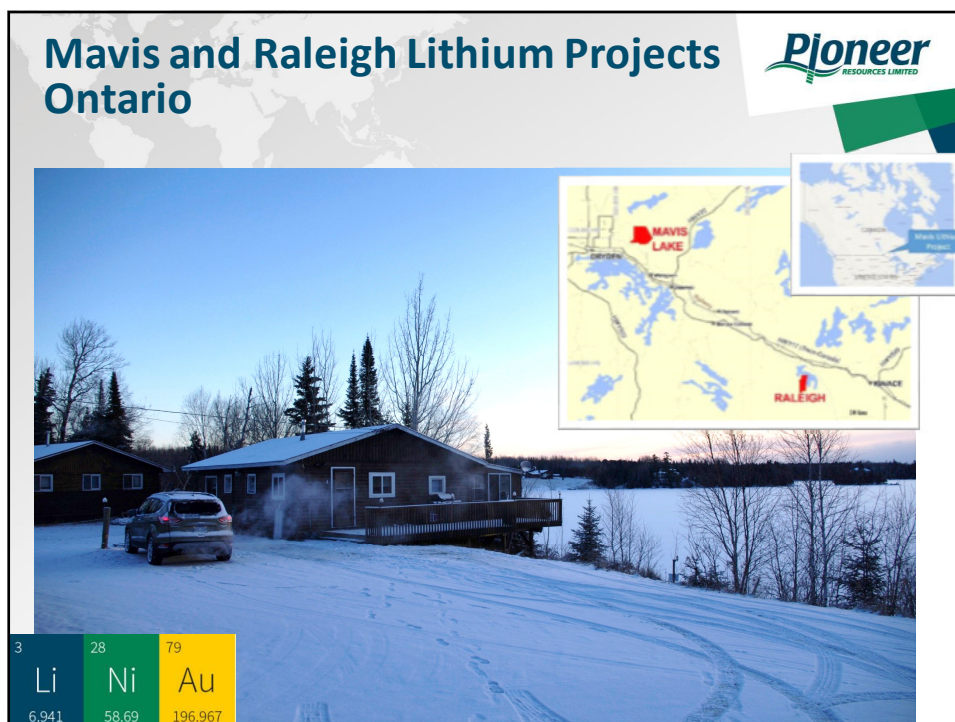
Deposit-scale zoning patterns in an idealised pegmatite:

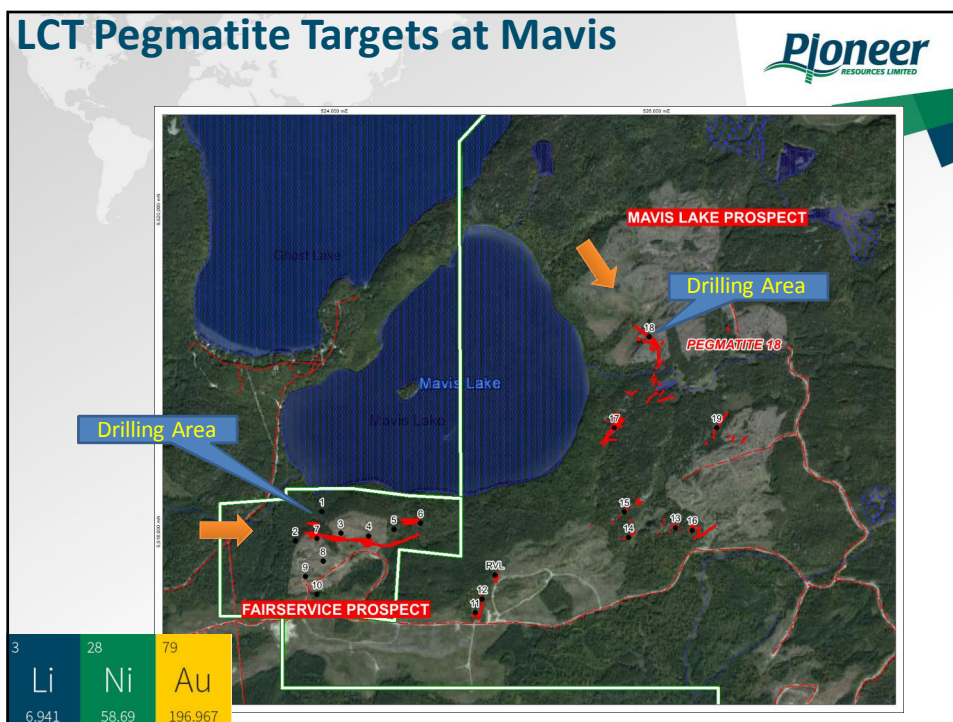
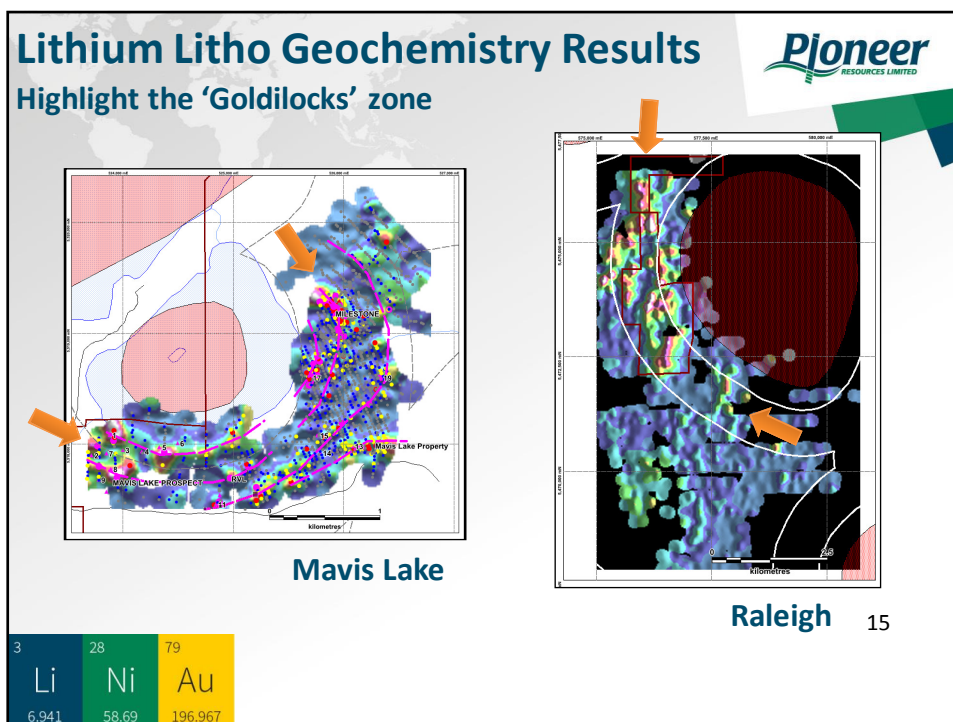
- Core zone
- Core margin—large crystals of tourmaline, beryl, or spodumene
- Intermediate zone(s)
- Albite zone
- Wall zone
- Border zone



12

Deposit-scale zoning patterns in an idealised pegmatite, (after Cameron (1949), Černý (1991), Fetherston (2004))





Spodumene in LCT Pegmatites



Spodumene chevrons at Pegmatite 18

Mavis Lake Project

- MF-11-08: 7m at 1.83% Li_2O from 4m
- MF-11-09: 7.8m at 1.86% Li_2O from 18.85m
- MF-11-12: 16m at 1.53% Li_2O from 125m
- MF-11-12: 26.25m at 1.55% Li_2O from 152m
- MF-11-13: 5m at 1.44% Li_2O from 19m
- MF-11-14: 3m at 2.15% Li_2O from 24m
- MF-11-15: 5.35m at 1.51% Li_2O from 78.4m
- MF-12-24: 16.4m at 1.86% Li_2O from 161.9m
- MF-12-25: 5.15m at 1.75% Li_2O from 130.7m
- MF-12-28: 6m at 2.53% Li_2O from 6m
- MF-12-30: 6.95m at 1.45% Li_2O from 32.25m
- MF-12-33: 3m at 2.26% Li_2O from 22m
- MF-12-34: 5m at 1.5% Li_2O from 24m
- MF-12-36: 6m at 1.48% Li_2O from 31m

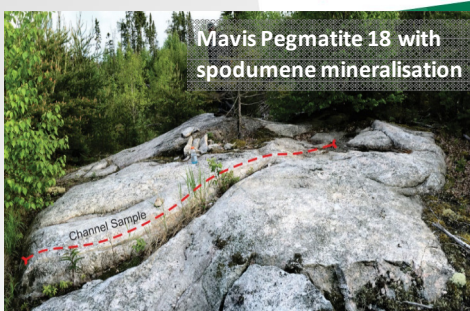
* All widths reported are drill core widths and have not been converted into true width. Appropriate rounding of Li_2O values applied.

3	28	79
Li	Ni	Au
6.941	58.69	196.967

New Discoveries - Open to expansion



Fairservice Pegmatite
John Harrop, Fred Breaks, Mike Sieb,
Adam Paterson (First Nations)



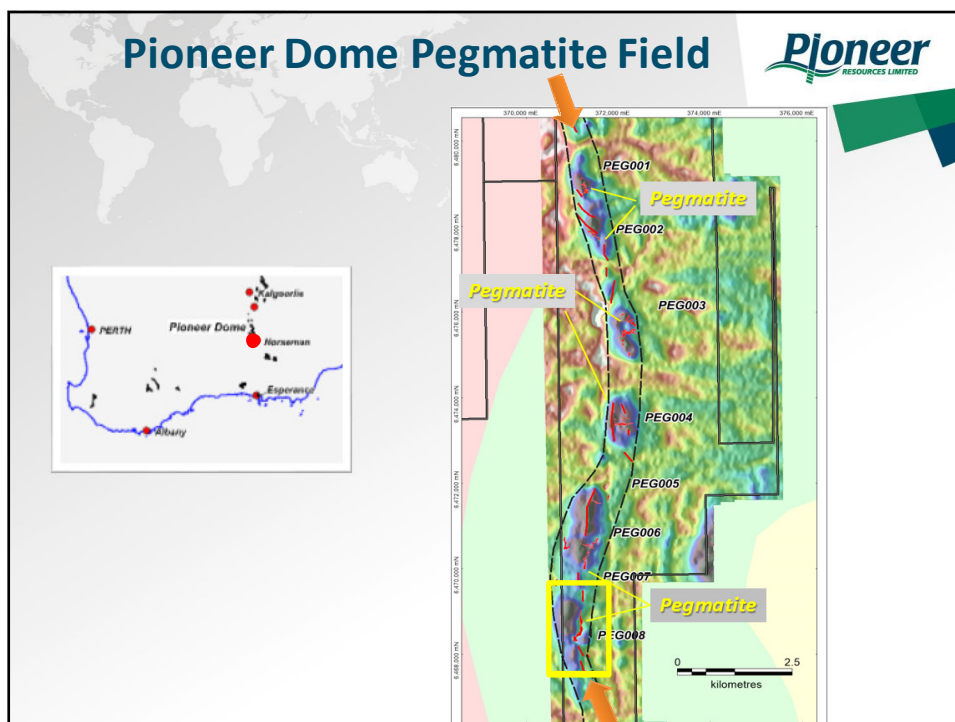
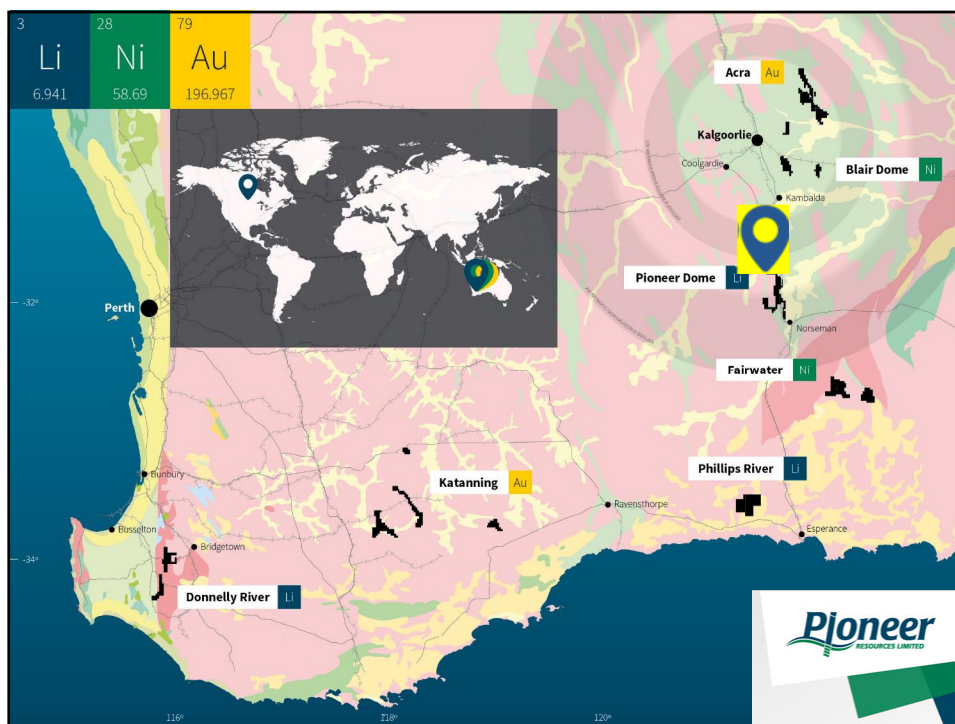
Mavis Pegmatite 18 with
spodumene mineralisation

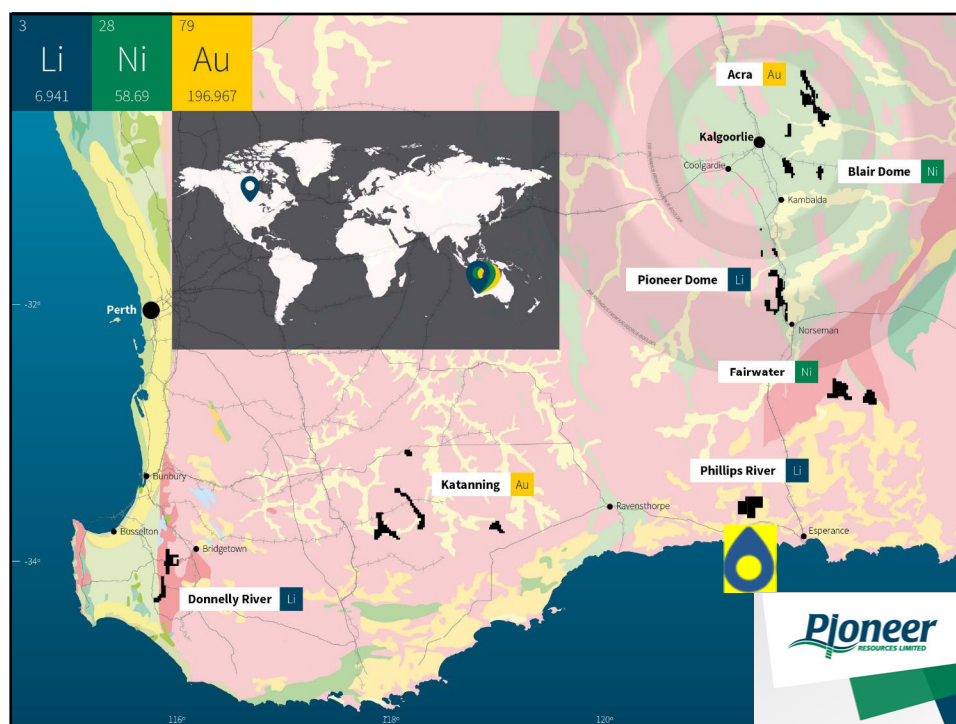


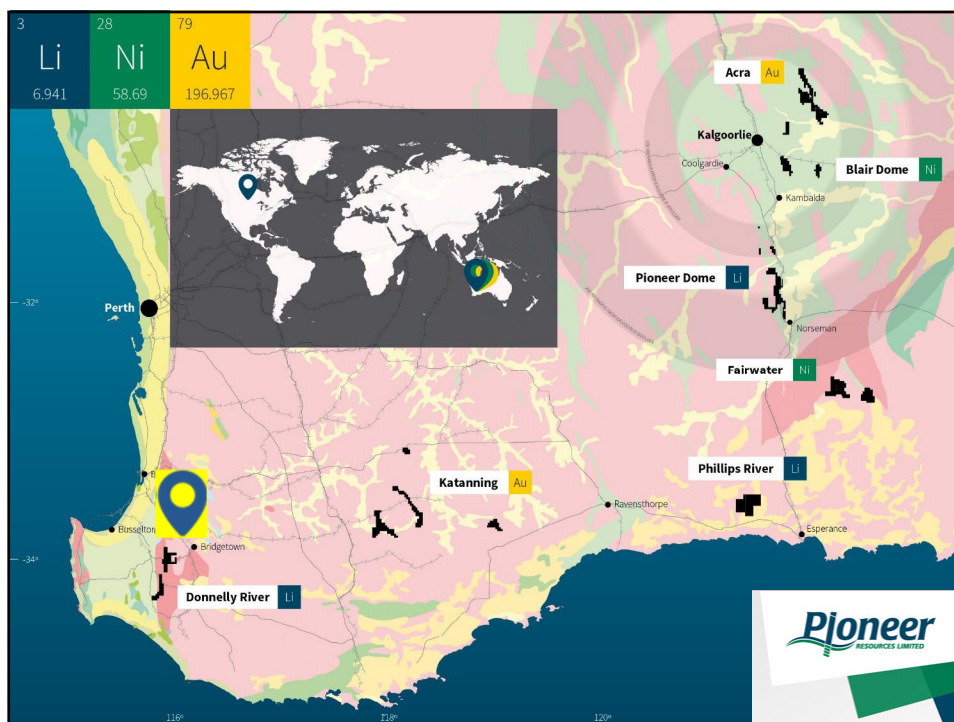
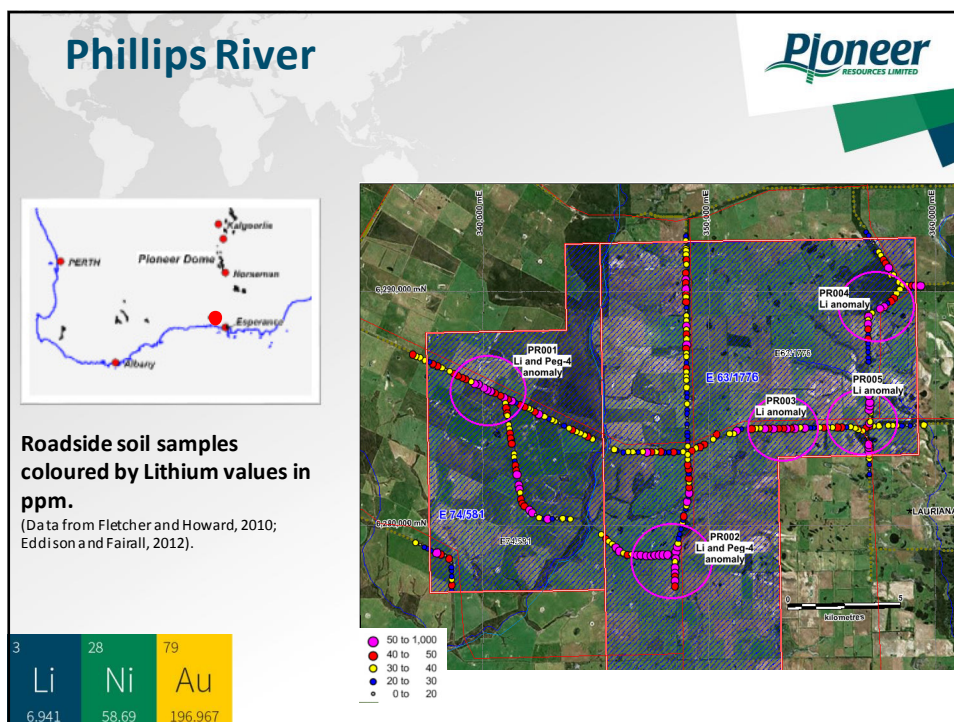
Raleigh drill core with
spodumene mineralisation

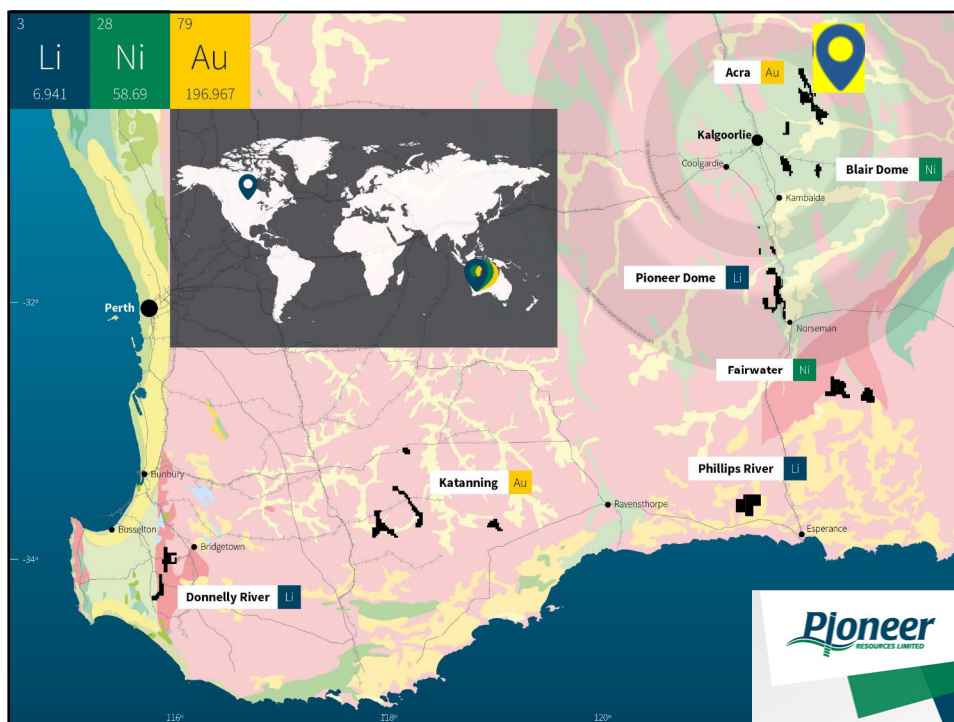
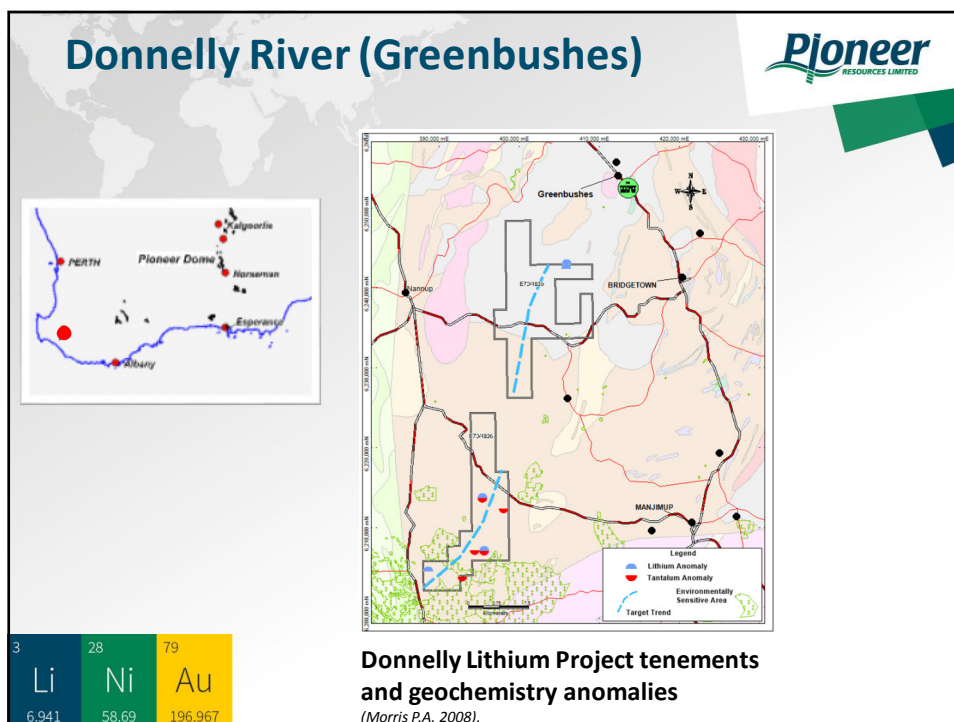


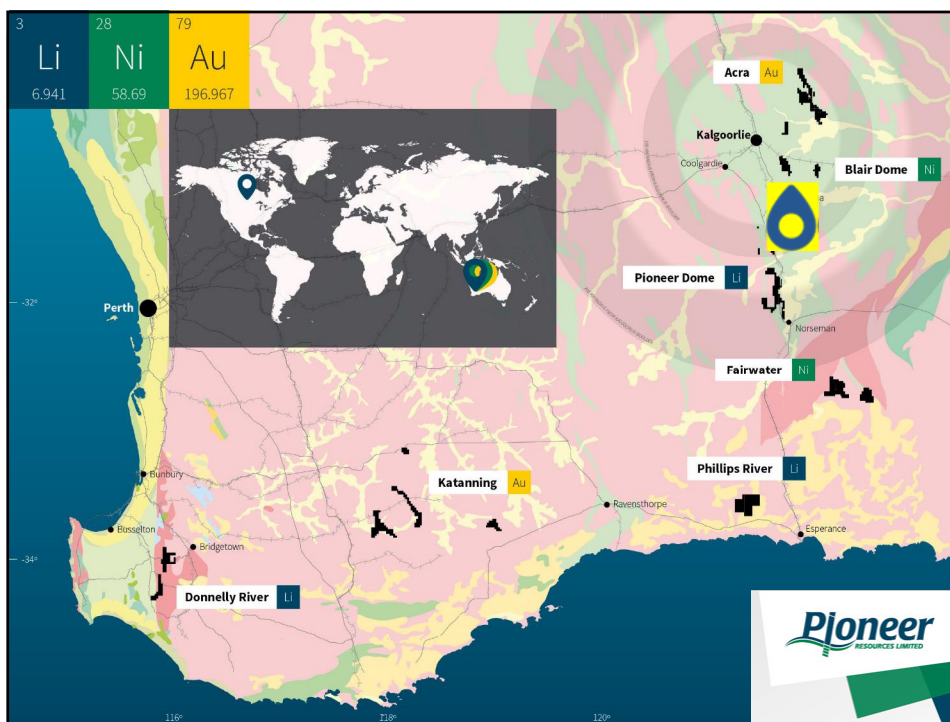
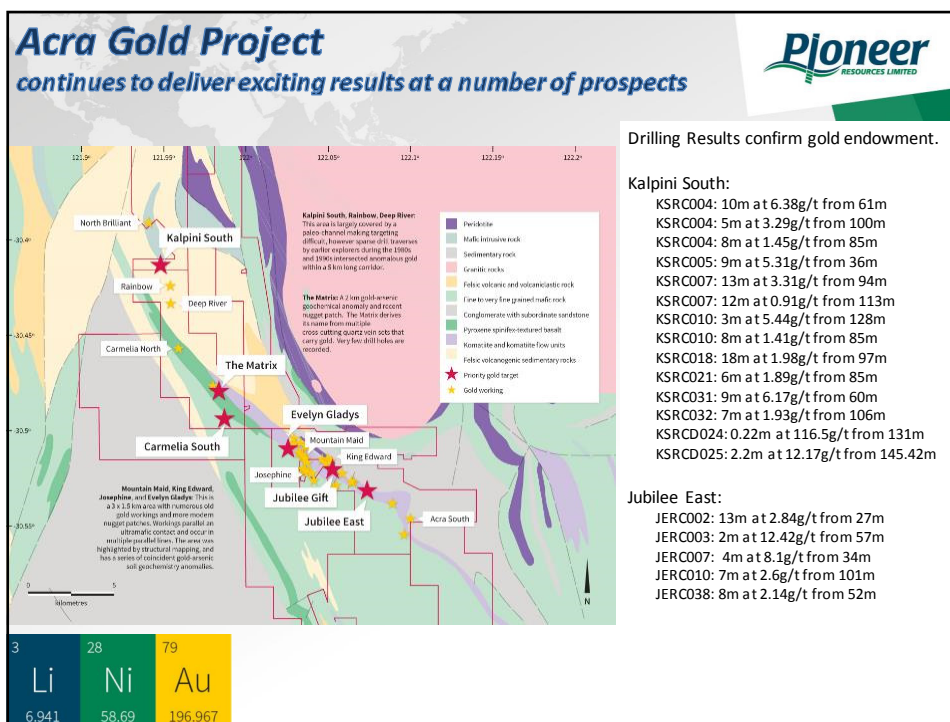
Fairservice Pegmatite with
spodumene mineralisation



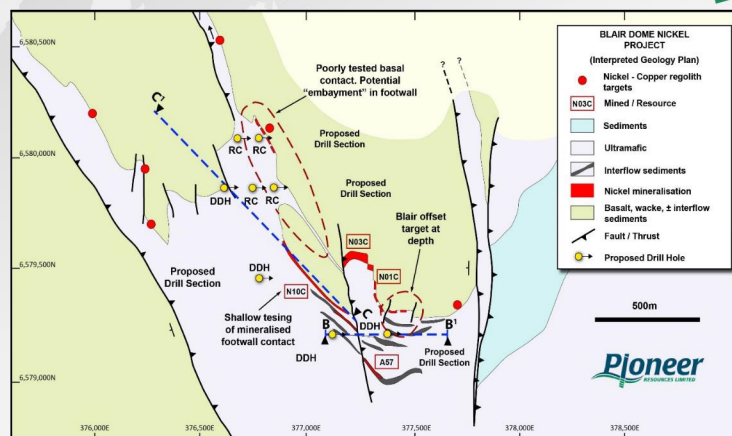








\$85,000 EIS grant for drilling



3	28	79
Li	Ni	Au
6.941	58.69	196.967

Forthcoming Work Programs Second half of 2016

Lithium Projects: Rare-metal geochemistry coupled with geological, structural and detailed geophysical data will be the key to new-target generation.

PIONEER DOME Lithium (Significant funding available)

- 5,000m RC drilling At PEG001,PEG002 and PEG008: Drill start date 30 September.
- Soil geochemistry progressing – 50% complete. Priority Area PEG003-007

MAVIS / RALEIGH Lithium (\$1,000,000 budget for 12 months)

- Magnetic/Radiometric surveys:
 - Mavis ground work completed
 - Raleigh drone coverage in September:
- Rock geochemistry: These work programs are progressing
- Drilling: Scheduled for the September-December quarter

ACRA Gold

- Next step: Air Core Drilling, RC Drilling

BLAIR DOME Nickel

- Diamond Drilling December quarter

3	28	79
Li	Ni	Au
6.941	58.69	196.967



Contact us

 +61 8 9322 6974

 pioneer@pioresources.com.au

 21 Ord Street, West Perth WA 6005

 PO Box 1787, West Perth WA 6872

www.pioresources.com.au