

## CEARA LITHIUM PROJECT UPDATE: INITIAL APPLICATIONS FORMALLY GRANTED

### HIGHLIGHTS:

- All 30 initial applications covering an area of 51,593ha have been formally granted by the Brazilian Mines Department (DNPM).
- Granting allows staged exploration works to commence on tenements at the historical lithium mining centre of Solonopole.

### Solonopole

- one of only two regions in Brazil mined for lithium;
- lithium mined in the area is currently used in the domestic ceramic and lubrication industries;
- DNPM mapping in 2012 identified over 200 pegmatities in the region;
- DNPM sampling in 2012 returned grades between 0.5% and 9.41% Li<sub>2</sub>O (from 11 of 60 grab samples collected);
- lithium minerals of spodumene, amblygonite and lepidolite identified plus tin, niobium, tantalum and gemstones; and
- no modern exploration previously undertaken except for small surface sampling program performed by the DNPM in 2012.



Image: Pegmatite Mineralisation at the Solonopole Historical Lithium Mining Centre

Cougar Metals NL (ASX Code: CGM) (“**Cougar**” or “**Company**”) is pleased to announce that the initial 30 applications comprising the Ceara Lithium Project have now been formally granted by Brazil’s National Department of Mineral Production (**DNPM**) (see Figure 1 below for location of granted tenements).

The Ceara Lithium Project is located in Ceara State, north-eastern Brazil, and comprises two separate areas, being: (i) Cristais (1.5 hours’ drive from State Capital, Fortaleza) and (ii) Solonopole (3.5 hours’ drive from Fortaleza). Both areas have excellent infrastructure with paved roads and power passing through the project areas.

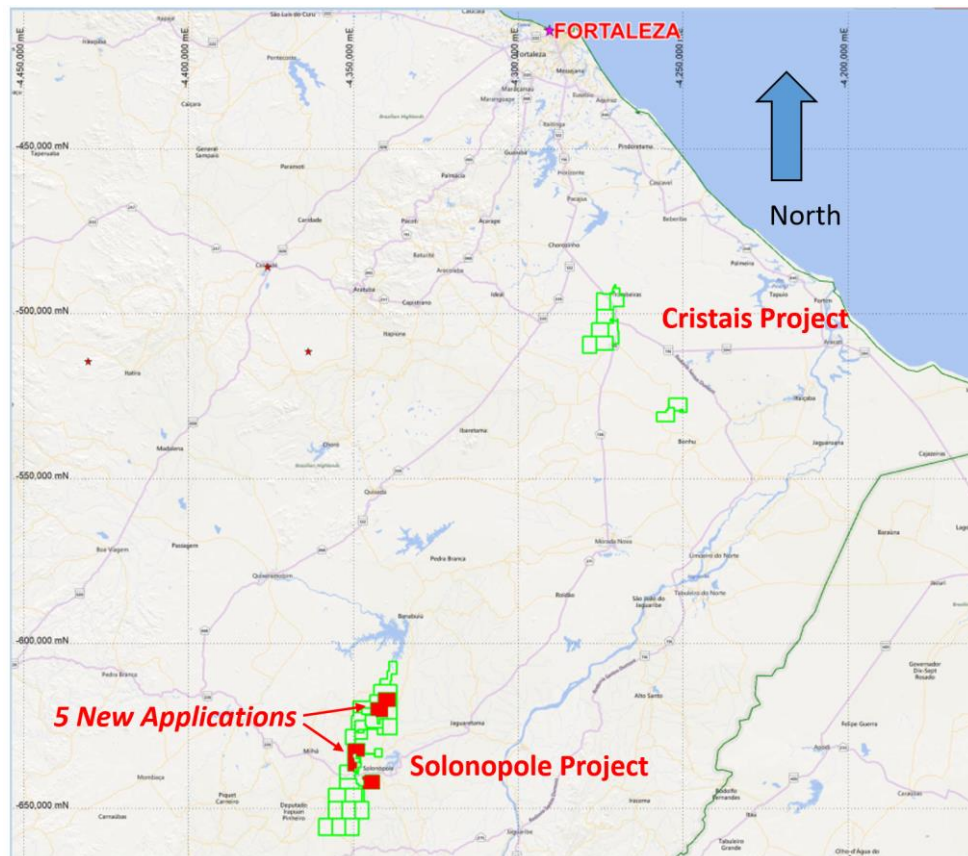


Figure 1: Project Map: granted tenements in green, recent applications awaiting grant in red

### **Initial Exploration**

Initial exploration will target the area in and around the historical mining centre of Solonopole and will initially consist of soil sampling and mapping of the area.

Follow up work will consist of:

- airborne geophysics and remote sensing targeting;
- soil geochemistry;
- trenching; and
- drilling.

A further update will be provided following the commencement of planned activities.

For further information please contact the undersigned via email at [r.swick@cgm.com.au](mailto:r.swick@cgm.com.au) or alternatively contact Michael Fry (Director, CFO & Company Secretary) on +61 8 9226 5002.

Yours sincerely  
**COUGAR METALS NL**



**RANDAL SWICK**  
*Executive Chairman*

#### ***Forward Looking Statements***

*Statements contained in this release, particularly those regarding possible or assumed future performance, costs, dividends, production levels or rates, prices, resources, reserves or potential growth of Cougar Metals NL, industry growth or other trend projections are, or may be, forward looking statements. Such statements relate to future events and expectations and, as such, involve known and unknown risks and uncertainties. Actual results and developments may differ materially from those expressed or implied by these forward looking statements depending on a variety of factors.*

#### ***Competent Persons Statement***

*Information in this report relates to exploration results that are based on information compiled by Mr Beau Nicholls (Member of the Australasian Institute of Geoscientists). Mr Nicholls is a fulltime employee of Sahara Mining Services and has sufficient experience which is relevant to the style of mineralisation and type of deposits under consideration and to the activities undertaken to qualify as a Competent Person as defined in the 2012 edition of the 'Australasian Code for Reporting of Exploration Results, Mineral Resources and Ore Reserves'. Mr Nicholls consents to the inclusion in the release of the statements based on his information in the form and context in which they appear.*