



JUMBUCK GOLD PROJECT



Drilling for Gold in South Australia's
Gawler Craton

April | 2016

COMPETENT PERSON STATEMENT & DISCLAIMER



• *The information that relates to exploration targets, exploration results and drilling data is based on information compiled by Ian D. Finch who is a member of the Australian Institute of Resources and Metallurgy and who has more than five years experience in the field of activity being reported on.*

• *Ian Finch is an employee of the Company and has sufficient experience which is relevant to the style of mineralisation and type of deposits under consideration and to the activity which he is undertaking to qualify as a competent person as defined in the 2012 Edition of the 'Australasian Code for Reporting of Exploration Results, Minerals Resources and Ore Reserves'.*

• *Mr. Finch consents to the inclusion in the presentation of the matters based on his information in the form and content in which it appears.*

• *This presentation does not purport to provide all of the information an interested party may require in order to investigate the affairs of Tyranna Resources Limited, nor shall it be construed as a solicitation to buy or sell Tyranna securities, or to engage in or refrain from engaging in any financial transaction. In preparing this presentation Tyranna did not take into account the investment objectives, financial situation and particular needs of the individual investors.*

• *Before making an investment decision on the basis of this presentation, the investor needs to consider, with or without the assistance of a financial advisor, whether the investment is appropriate in light of their particular investment needs, objectives and financial circumstances.*

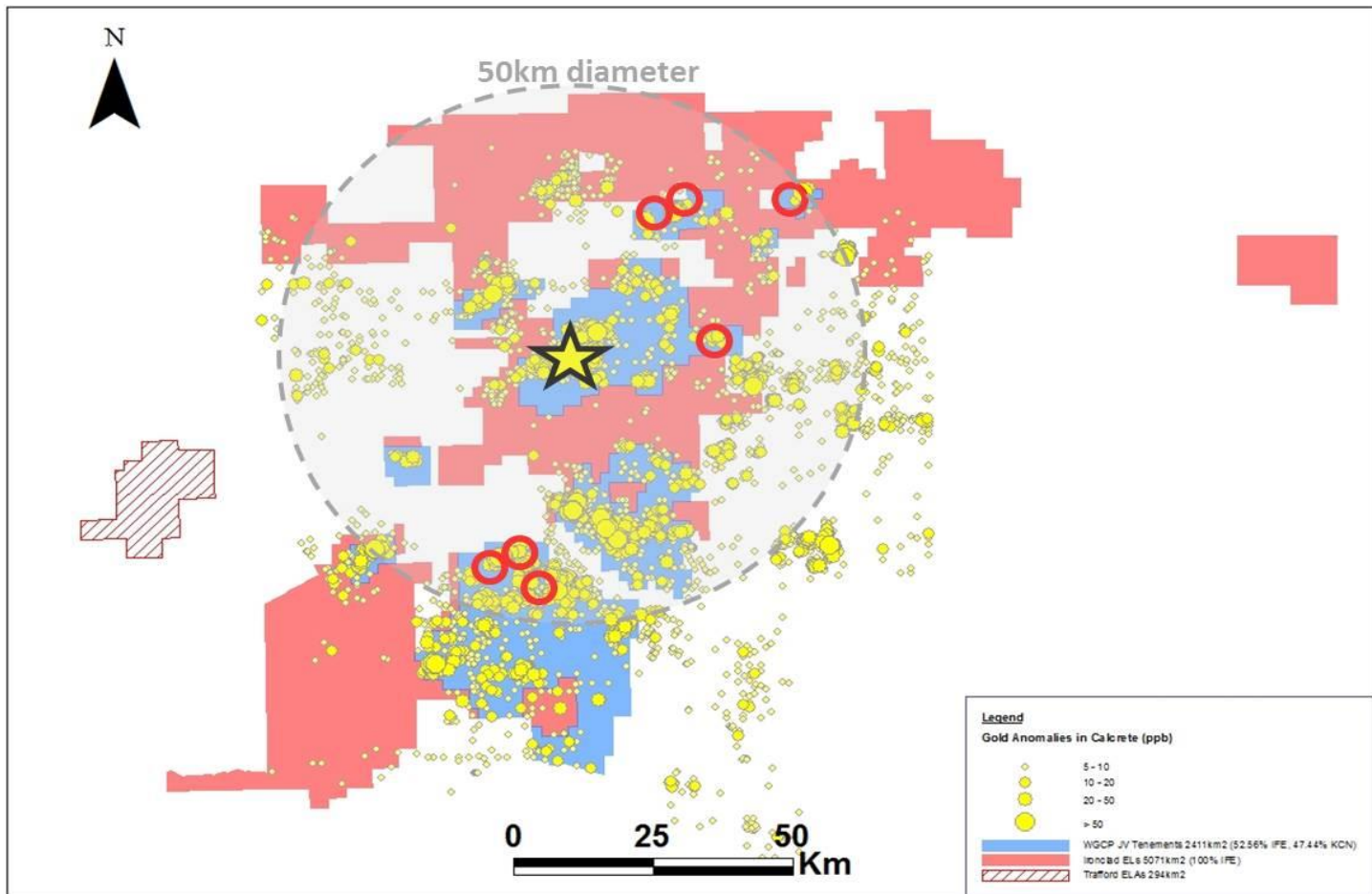
• *This presentation is based on information acquired from associated companies, internal company reports and technical information believed to be reliable but Tyranna does not make any representation or warranty to its accuracy, completeness or currency. Tyranna accepts no obligation to correct or update the information or opinions expressed in it. Opinions expressed are subject to change without notice and accurately reflect the views of Tyranna at the time of presenting. Photographs, unless captioned, are not from the project area.*

• *This presentation has originated from Tyranna Resources Limited.*

• *Exploration Target (Target) Statement:*

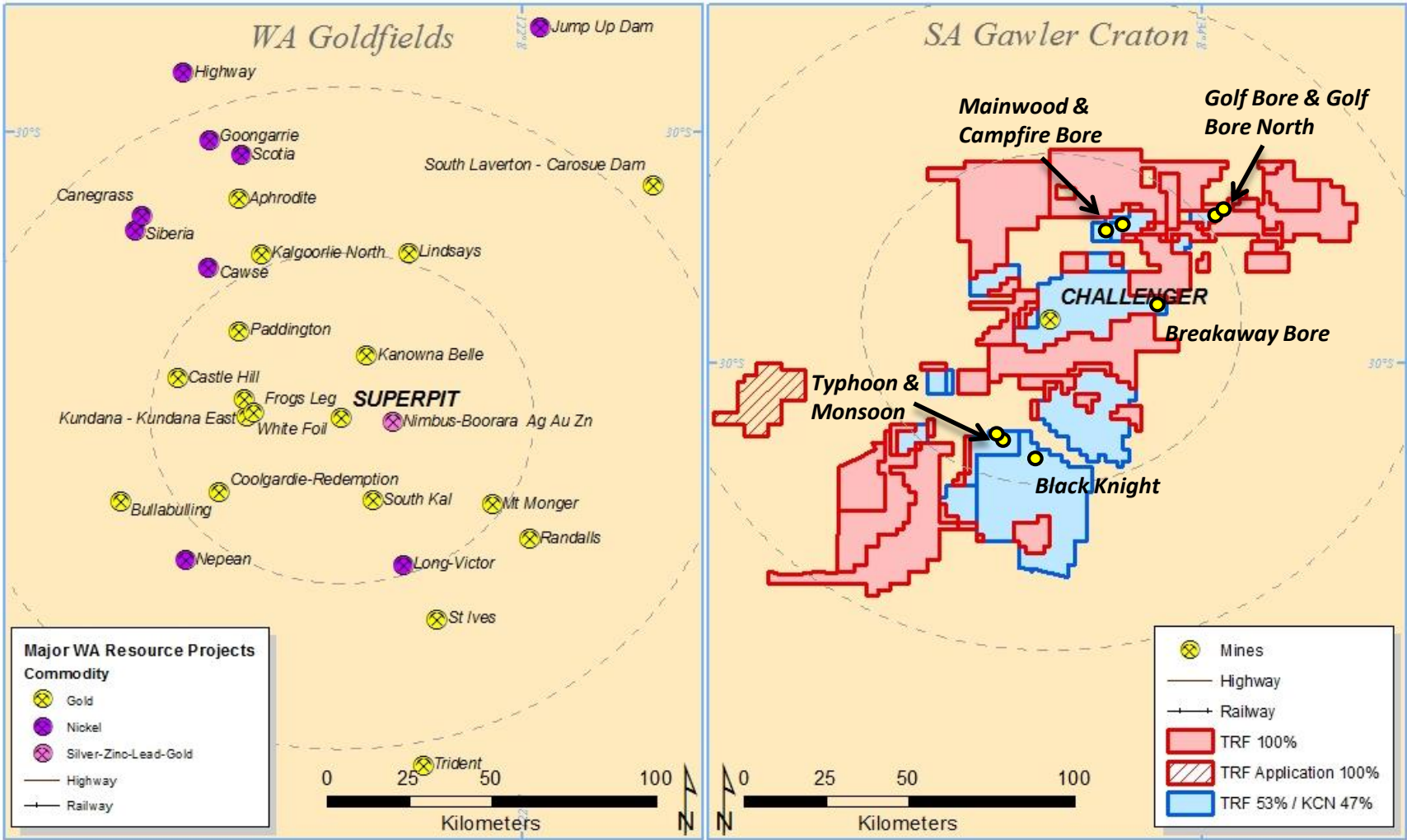
An Exploration Target (Target) does not constitute the definition of any resource, which is compliant with the JORC Code. Target tonnages and grades contained herein are conceptual in nature and may or may not be realised through completion of further exploration and other studies on the targets described. As such, it is uncertain if further exploration will result in the determination of tonnages and grades that conform to mineral resources or ore reserves under the JORC code

A NEW GOLD PROVINCE...

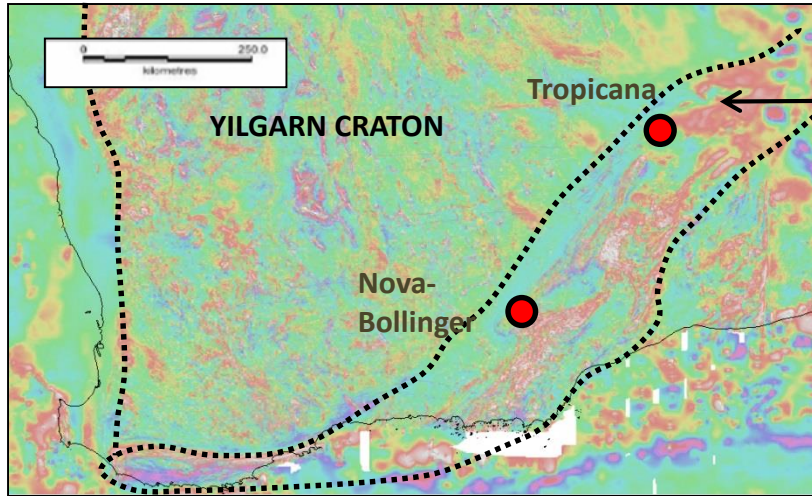


“...POLLUTED WITH GOLD”

SIZE POTENTIAL – WA GOLDFIELDS

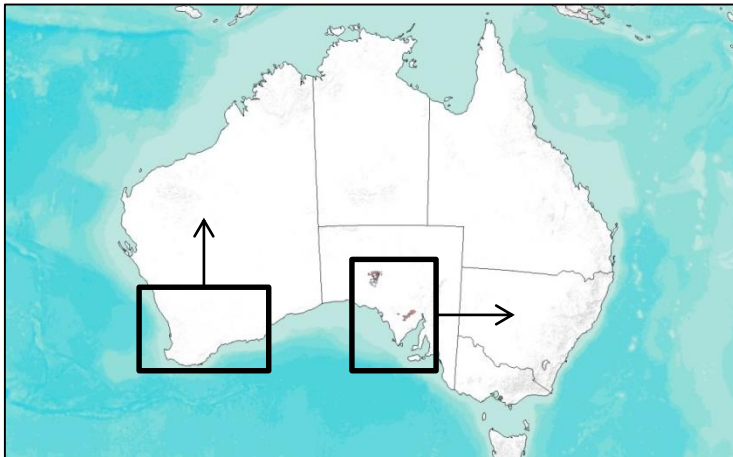
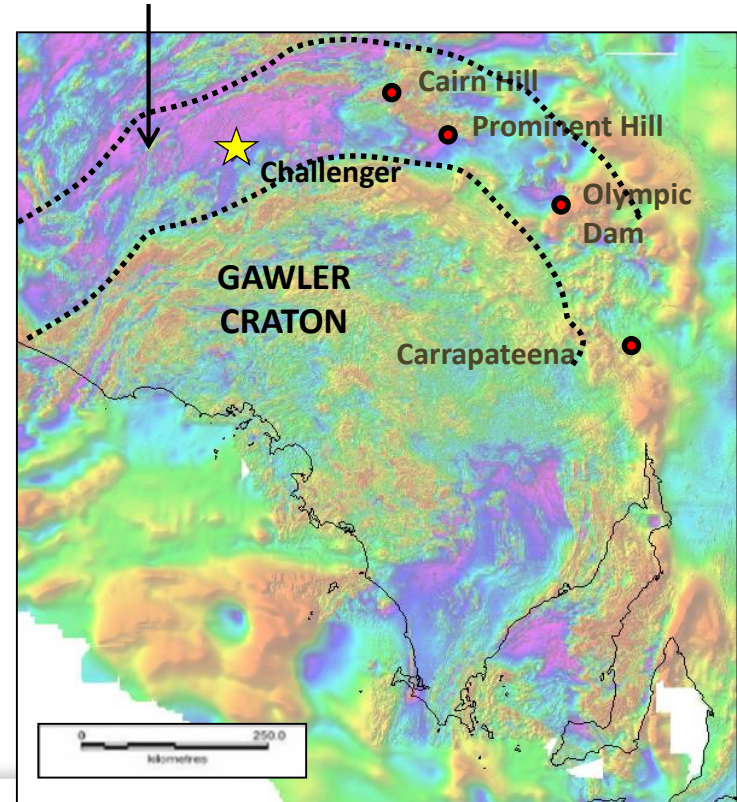


THE NEXT FRASER RANGES?



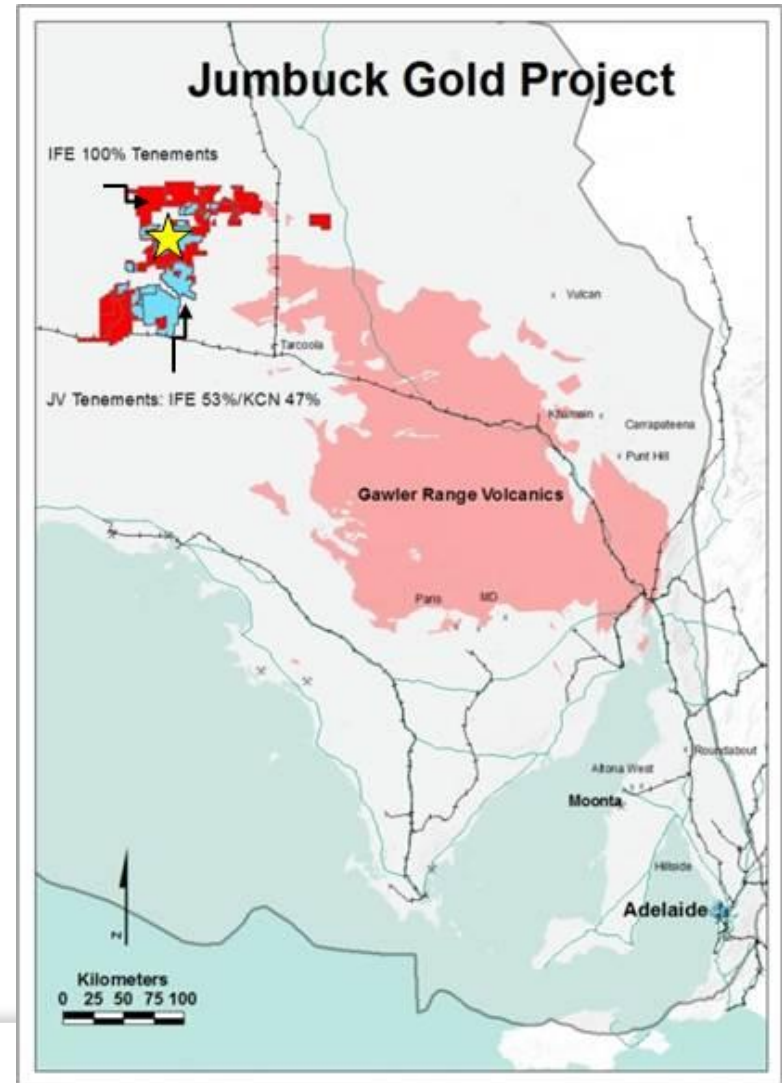
ALBANY-FRASER MOBILE BELT

CHRISTIE-MULGATHING MOBILE BELT



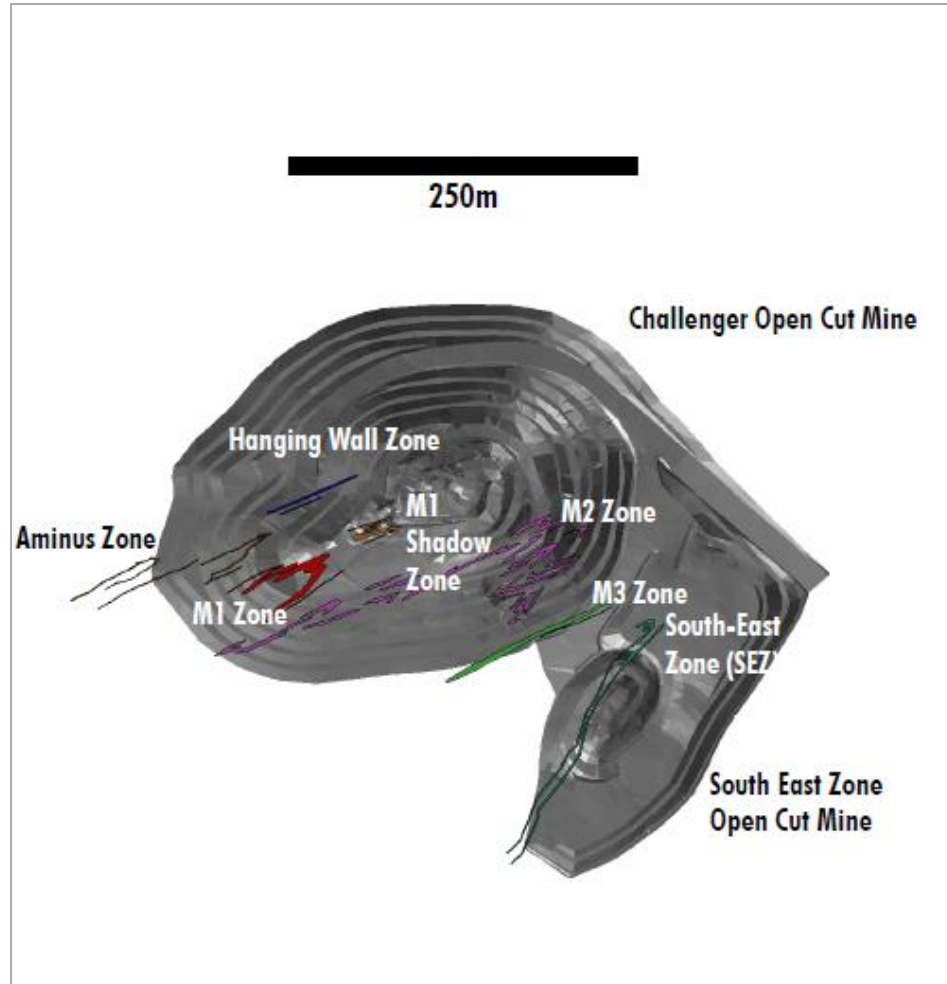
DOMINANT LAND POSITION

- Tyranna has largest and most prospective land holding.
- Controls **+8,000km²** around Challenger Gold Mine
- **+\$20M** spent on exploration
- Resurgent activity in Western Gawler Craton



CHALLENGER GOLD MINE

- High grade gold - surface to 1km
- **>1Mill oz @ 6g/t Au** since 2002
- **108,000Oz @ 9.52g/t Au** at its peak (2005-06)
- New zones discovered during mining
- ***Regional exploration since discovery has been sparse***



Source: Kingsgate 2015

Corporate Objectives 2016

- Upgrade and extend known prospects in order to increase resource ounces of project (target 500,000 ounces)
- Make new high grade discovery
- Earn in max JV % and develop potential of 100% ground
- Develop potential mining feasibility of one or more prospects with centrally located plant

Reserve at “Golf Bore”

Target 150,000 Oz
@ >2 g/t Gold



Drill Golf Bore-like

Targets

Target 500,000 Oz
@ >2 g/t Gold Resource



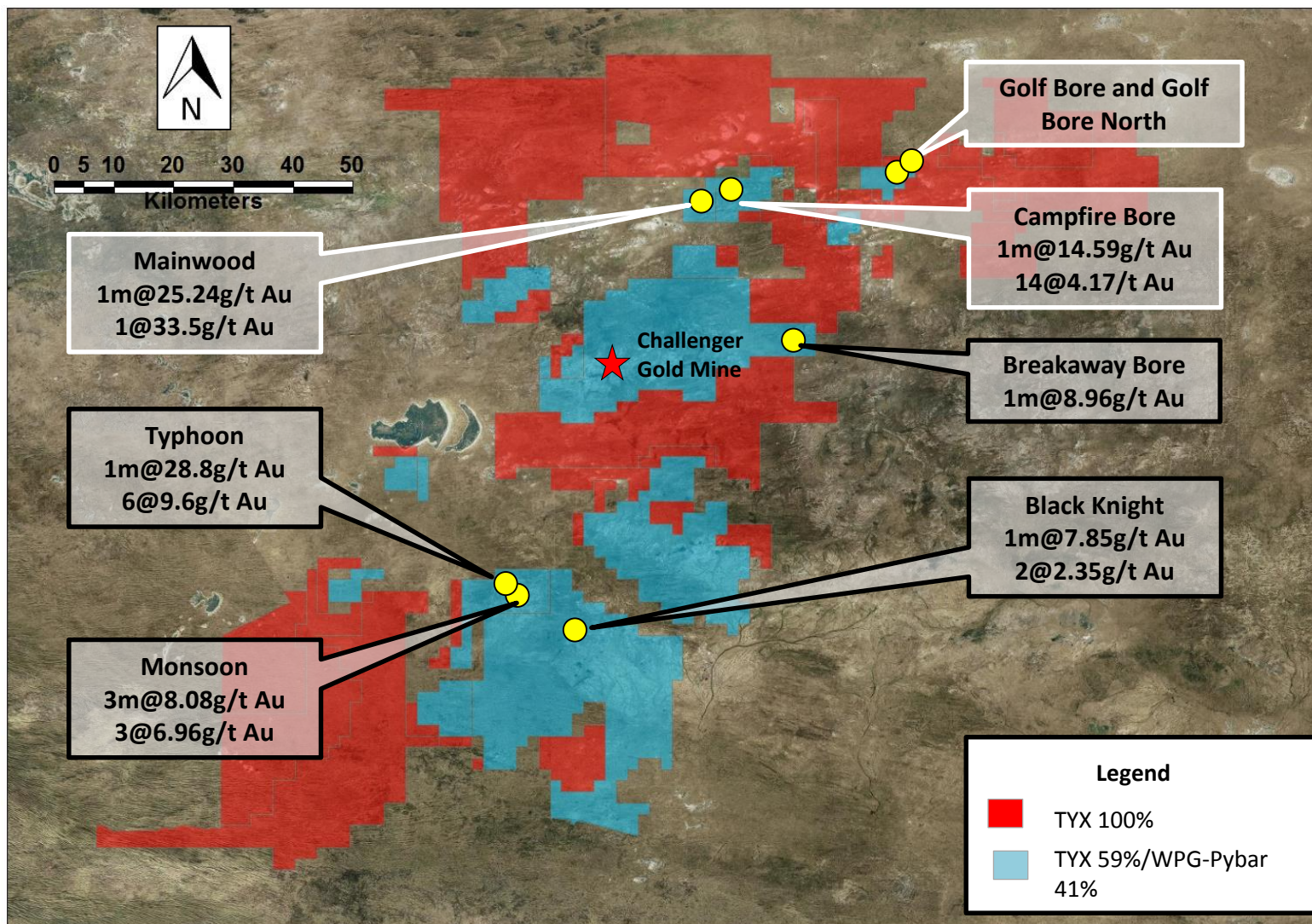
+/- 200,000 Oz Reserve



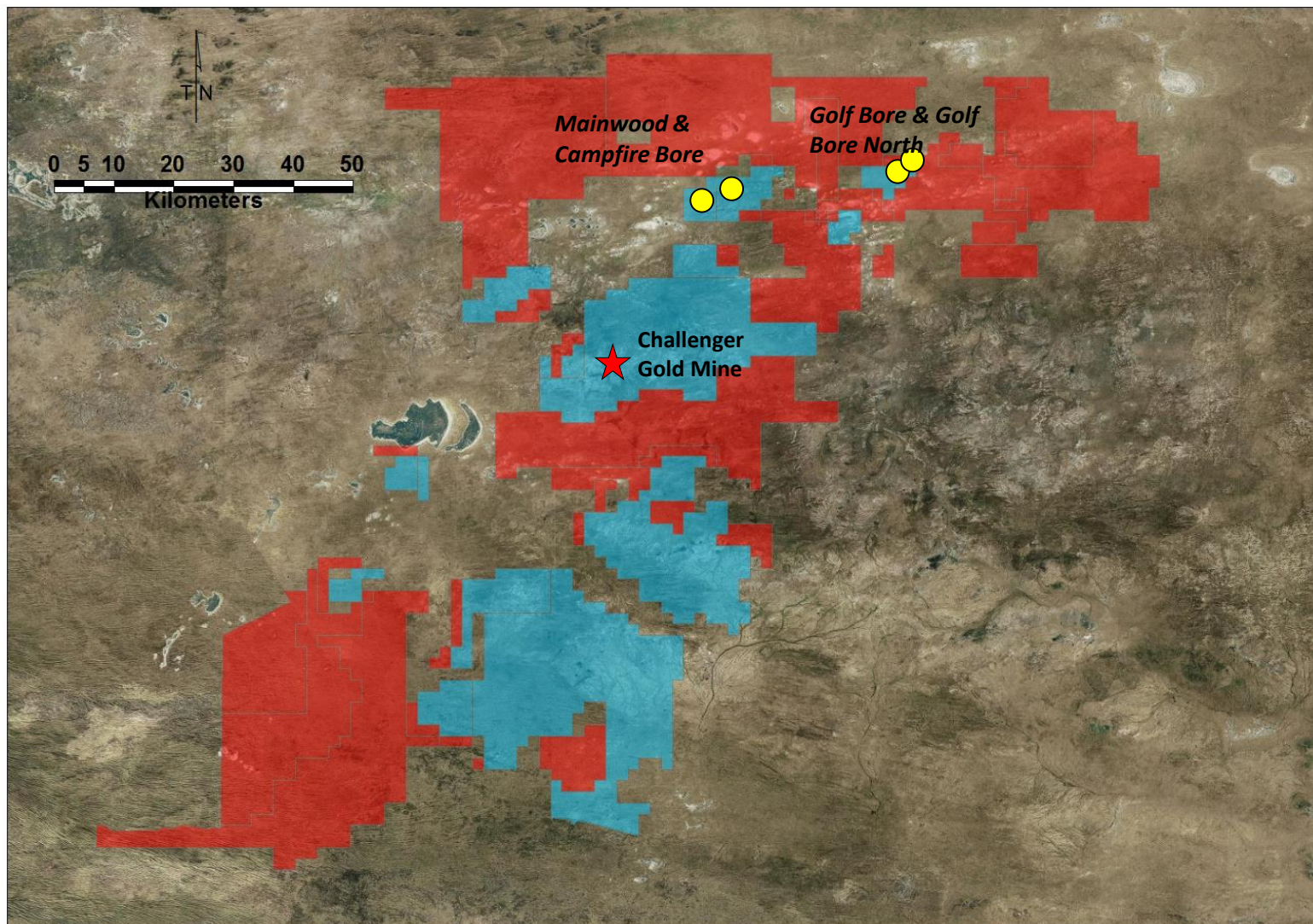
Mine – Centrally Located Plant



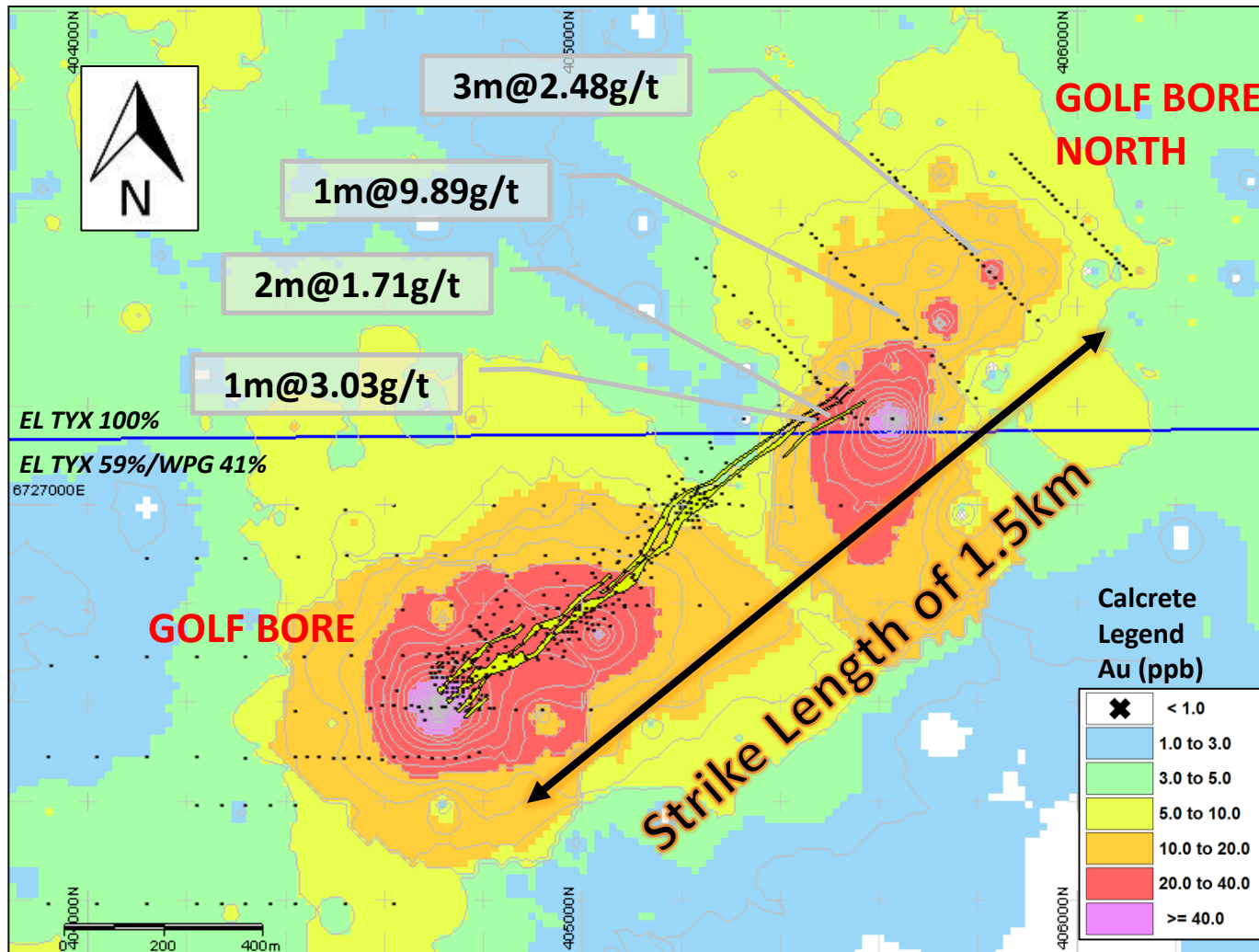
PRIORITY PROSPECTS



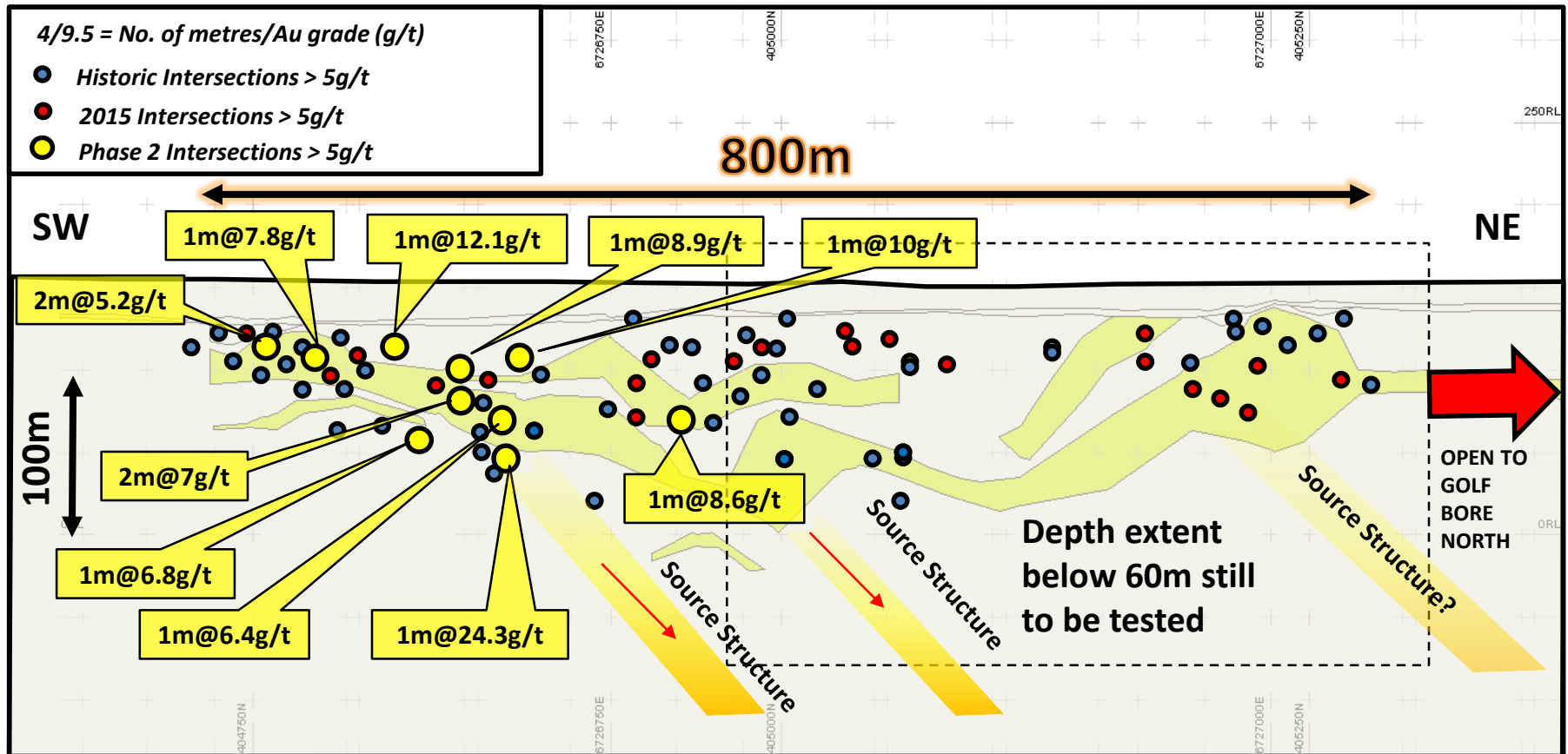
Current Drill Targets



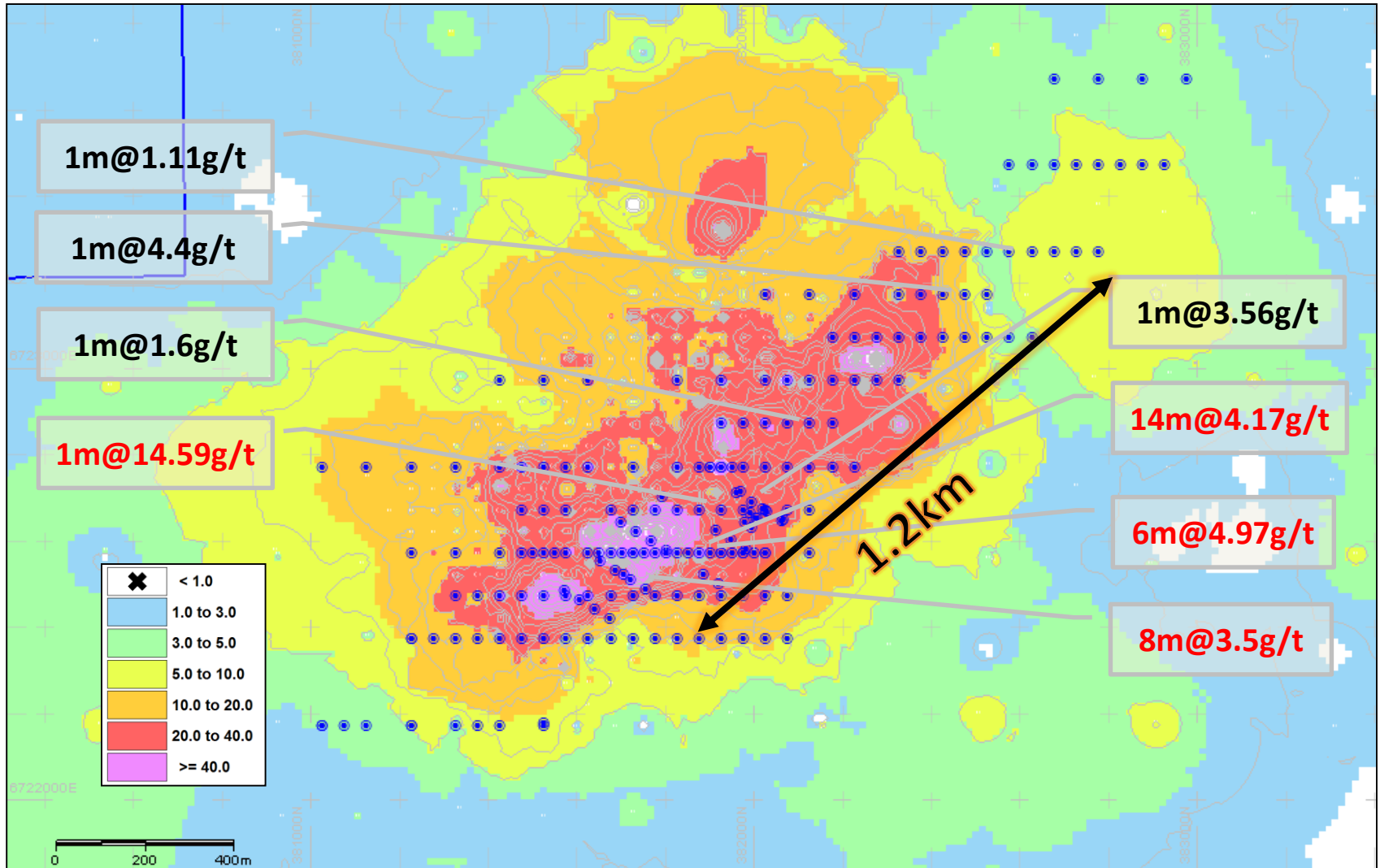
Golf Bore & Golf Bore North



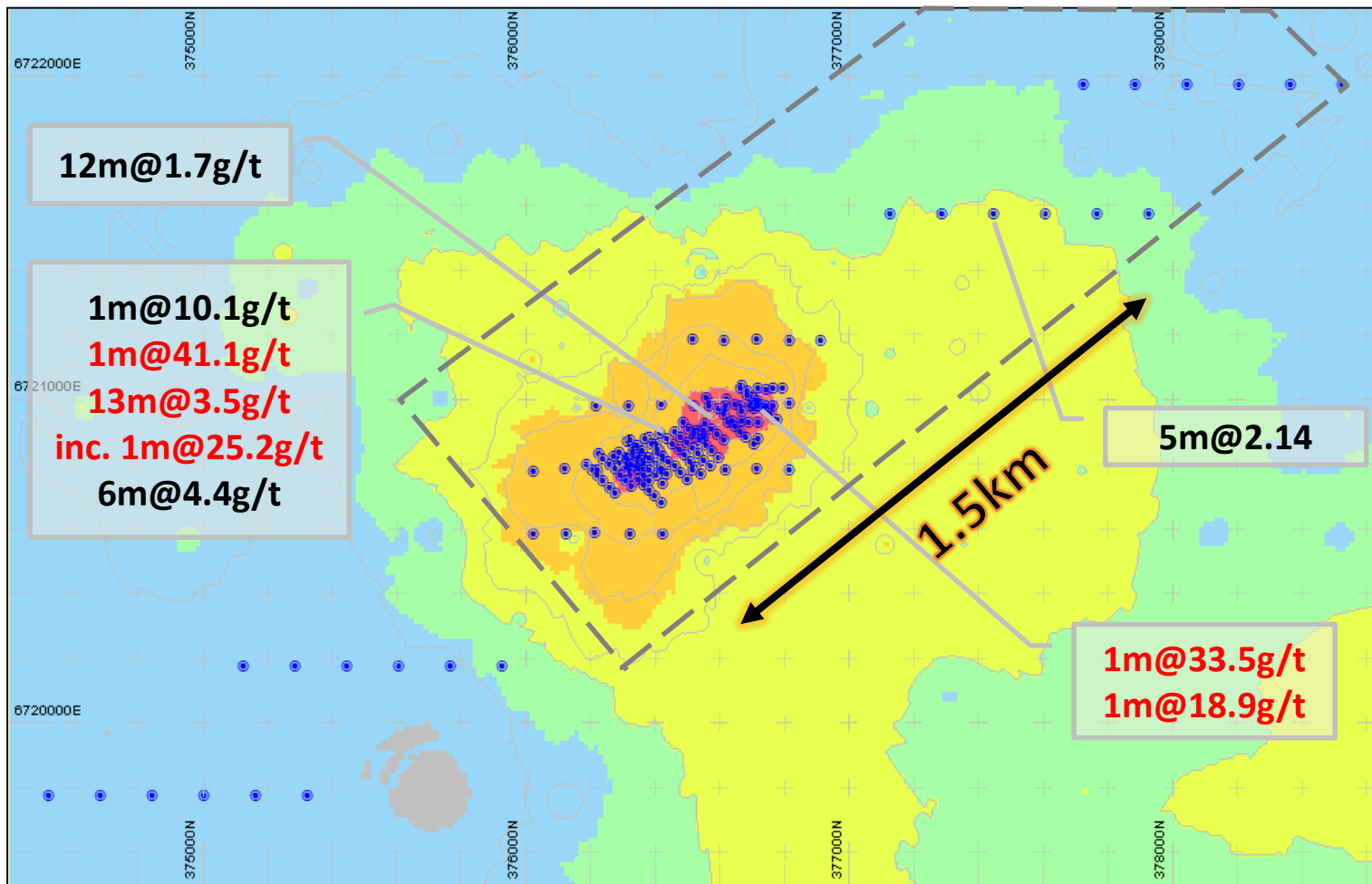
GOLF BORE



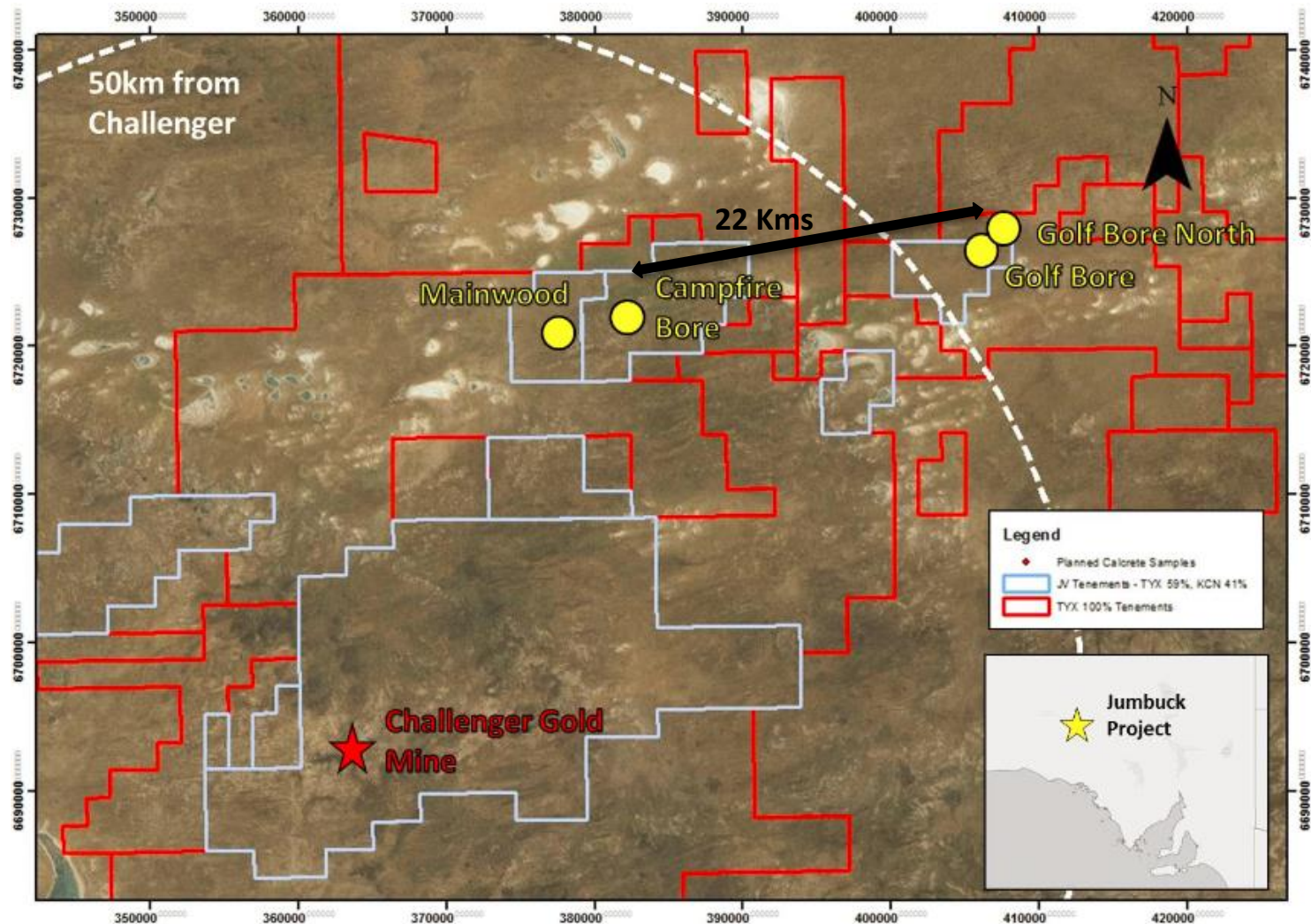
Campfire Bore



Mainwood



Gold Projects close to Challenger Mill



Timeline

- **Drilling 20th March – May**
 - **Campfire Bore Orientation 200m (Completed)**
 - **Golf Bore Down-dip 700m (Completed)**
 - **Golf Bore North 1500m (in progress)**
 - **Mainwood 2000m**
 - **Campfire Bore 1800m**

- **Drilling Completed - May**

- **Results May - June**

Why Invest?

- **Drilling for +1M Oz Challenger “look-a-likes”**
- **Extensive New Gold Province**
- **First Mover Advantage**
- **Extensive 6,200m Drilling Currently Underway**
- **Building Gold Resources**
- **Emerging Australian Gold Explorer/Developer**

CORPORATE PROFILE

ASX: TYX

- **Shares on Issue..... 283 M**
- **Options on Issue (listed)..... 55.3 M**
- **Options on Issue (unlisted).....20 M**
- **Share Price..... 3.5c**
- **Market Capitalisation..... \$8.5 M**
- **Cash, Receivables & Investments.\$6.5 M**



JUMBUCK GOLD PROJECT



THANK YOU
