



LATIN RESOURCES LIMITED  
ACN: 131 405 144

Unit 3, 32 Harrogate Street  
West Leederville, Western Australia,  
6007.

P 08 6181 9798

F 08 9380 9666

E [info@latinresources.com.au](mailto:info@latinresources.com.au)

20 October 2016

## **CONCESSIONS GRANTED AT CATAMARCA PROJECT, ARGENTINA.**

### **HIGHLIGHTS**

- **On 31 May 2016 the Company announced it had made claim applications over 70,000 hectares in seven exploration tenements in the Catamarca Province, prospective for Lithium Pegmatites.**
- **The seven exploration tenements have been granted for exploration rights by the Mining Authority of the Catamarca province.**
- **The granting of the tenements now allow for exploration work including drilling to commence on the approval of an Environmental Impact Report (EIR)**
- **On the 14<sup>th</sup> June following the extinction of a series of abandoned claims by the Mining Authority of Catamarca, Latin applied for additional exploration tenements over 7,051.6 hectares these are expected to be granted in the coming weeks .**
- **An exploration program has been approved by the Board with drilling expected to commence in November, through December and January.**
- **The company is well funded to commence exploration and drilling**

Latin Resources Limited (ASX: LRS) (“Latin” or “the Company”) is pleased to announce that the seven mining tenements totalling over 70,000 hectares have been granted for exploration rights by the Mining Authority of Catamarca in Argentina .

Two claim applications cover the Vilisman and Ancasti Pegmatite Groups referred to in the Company’s announcement of 31 May and 14 June 2016 are expected to be granted in the coming weeks. The tenements host a number of well documented Lithium bearing pegmatites near the townships of Ancasti and Vilisman (Figure 2), each located on the eastern slopes of the Ancasti Ranges some 40 km from the Provincial Capital, San Fernando del Valle de Catamarca (Figure 1).

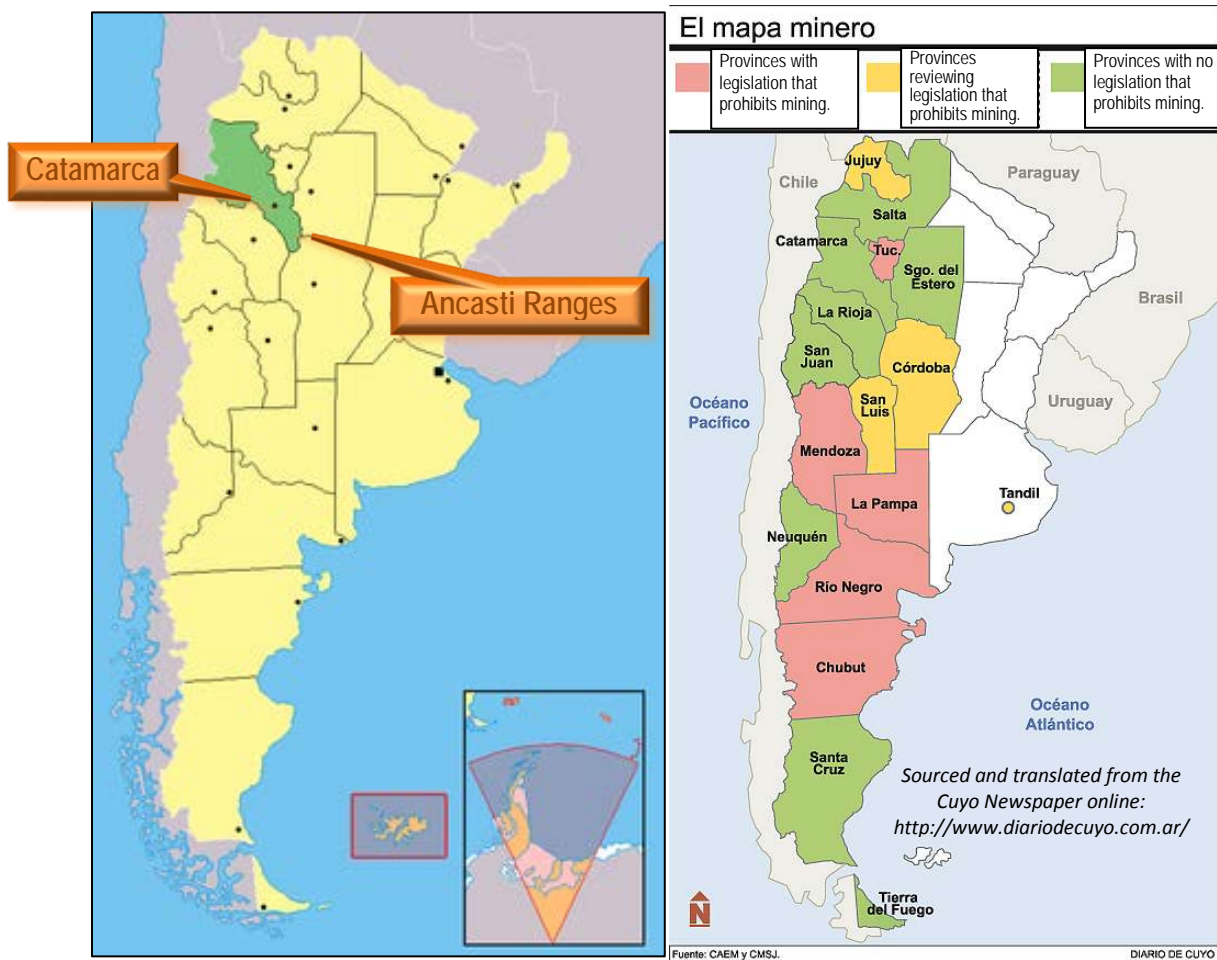


Figure 1: Location of the mining friendly Catamarca Province, its capital, and the Ancasti Ranges in NW Argentina.

**Pegmatites of the Ancasti Ranges:**

Various studies of pegmatites in the Ancasti Ranges have been reviewed: Herrera (1964), Rossi (1965), Fernández Lima et al. (1970), Marconi (1972), Balmaceda (1982), Balmaceda and Kaniefsky (1982), Lottner (1983), Acosta et al. (1988) and Galliski (1992a, 1994a, 1994b).

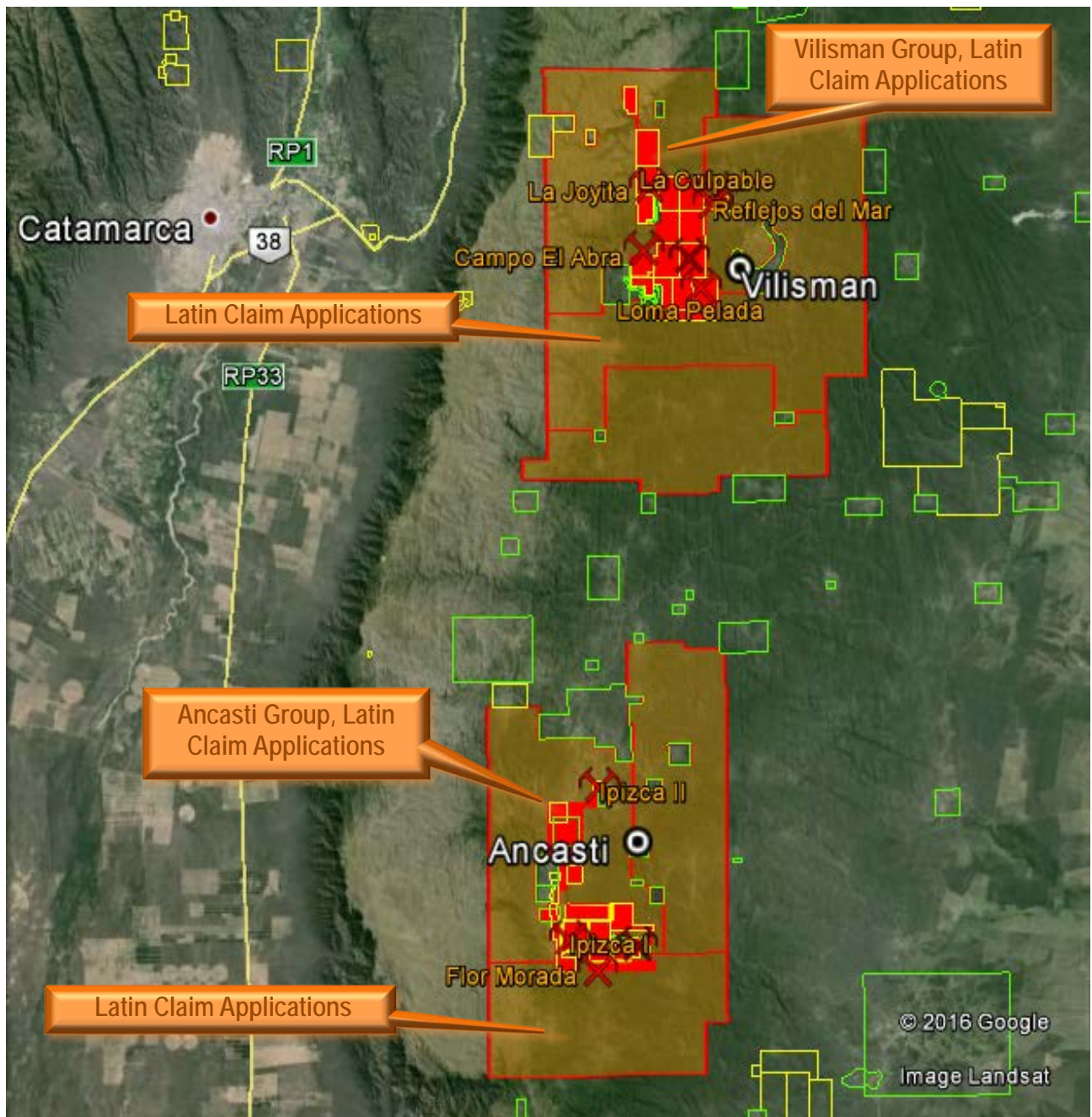
Acosta *et al* (1988) grouped a series of lithium-bearing pegmatites occurrences in the Ancasti Ranges into two groups, geographically located within several kilometres of each of the Vilisman and Ancasti townships.

**The Vilisman group:**

- La Culpable
- Reflejos del Mar
- La Herrumbra
- Loma Pelada
- Campo el Abra
- Juan Carlos
- Joyita
- Pampa El Coco

**The Ancasti group:**

- Ipizca I
- Ipizca II
- Santa Gertrudis
- Flor Morada



**Figure 2: Location of the Vilisman and Ancasti Lithium Pegmatite Groups, (Solid red areas), with old mines marked. Latin's claim applications now cover the orange shaded areas extending outwards from, and also including the known Lithium deposits.**

The Vilisman Group hosts at least 8 pegmatite deposits that have evidence of past mining activity. Six of these are individual dykes emplaced along structures in banded mica schists, while two are formed as multiple dykes. Most of the dykes outcrop over at least 100 m of strike length with thicknesses of between 1 m and 5 m (Announced 14 June 2016). Acosta *et al* (1988) mentions 11 other deposits in the Vilisman Group that were visited as part of this work, but cites insufficient data preventing their inclusion in the tabulated list, despite having observed good mineralisation and workings.

### ***Exploration Program – Catamarca***

The Company now has access to fully explore and drill a number of mineralised positions at Catamarca, the exploration team has commenced mapping and sampling of the concessions. The objective is to employ trenching and sampling techniques with appropriate chemical analysis to define immediate drill targets.

The drilling will commence once the environmental study along with the drill permits are approved by the Catamarca mining authorities but is expected to have the approvals over the coming weeks. The drilling is expected to commence in November/early December. The resource will be defined according to the JORC code mineral resource estimates should the data produced allow such estimates to be prepared.

The company has recently raised \$3,400,000 to fund the exploration program and drilling .This will occur as permits allows, but it is considered to expect significant advance towards these objectives during the remainder of 2016.

Managing Director Chris Gale commented, “We are now very excited that finally we can commence our exploration program including drilling our lithium targets in Catamarca with the aim of proving up a lithium resource in the very near future.”

He went on to say, “We are funded for the drilling campaign, we have an excellent exploration team together with compelling drill targets in a Lithium pegmatite district of Argentina. Exciting times ahead for Latin Resources ! .”



***Figure 3: Pegmatite outcrop at the Ancasti ranges, Catamarca, Argentina.***

## **References:**

- Acosta, G.R., Jurado Marrón, H., Fuentes, S.E., Watkins, S.G., Ovejero de Filippin, A.I. 1988,** *Estudio Geoeconomico de Pegmatitas*, Gobierno de la Provincia de Catamarca, Convenio Dirección de Minas – Consejo Federal de Inversiones, Catamarca.
- Angelelli, V., and Rinaldi, C. A., 1963,** *Yacimientos de minerales de litio de las provincias de San Luis y Cordoba*, Comision Nacional de Energía Atómica de la Rca. Argentina, Inf. No. 91, Buenos Aires, p. 1-99.
- Balmaceda, A.N., Kaniefsky, J., 1982,** *Caracterización de dos Pegmatitas de Espodumeno Situadas en Las Provincias de Catamarca y San Luis, Argentina.*, Quinto Congreso Latinoamericano de Geología, Argentina, 1982, Actas, II: 213-223.
- Balmaceda, A.N., 1982,** *Estudio Geológico de Las Pegmatitas Santa Gertrudis e Ipizca II, Sierra de Ancasti – Provincia de Catamarca, Argentina.* Quinto Congreso Latinoamericano de Geología, Argentina, 1982, Actas, II: 751-761.
- Fernandez Lima, J.C., Rinaldi, C.A., Turazzini, G.E., 1970,** *Pegmatita Litifera “Reflejos del Mar” Ancasti – Provincia de Catamarca.* Actas 4º Jornadas Geológicas Argentinas, 3:43-60. Buenos Aires.
- Černý, P., Ercit, T.S., 2005.** *Classification of granitic pegmatites.* Canadian Mineralogist, 43: 2005-2026.
- Galliski, M.A., 1983.** *Distrito Minero El Quemado, Deptos. La Poma y Cachi, Provincia De Salta, II. Geología de sus Pegmatitas.* Revista Asociación Geológica Argentina, v.381 (3-4): 340-380, 1983.
- Galliski, M.A., 1994a.** *La Provincia Pegmatítica Pampeana: I Tipología y Distribución de sus Distritos Económicos.* Asociación Geológica Argentina, Revista Asociación Geológica Argentina, v. 49: 99-112.
- Galliski, M.A. 1994b.** *La Provincia Pegmatítica Pampeana: II Metalogénesis de sus Distritos Económicos.* Asociación Geológica Argentina, Revista Asociación Geológica Argentina, v. 49: 113-122.
- Galliski, M.A. 1996** *The Mineralizes Pegmatites from the Pampean Ranges.* Instituto Argentino de Nivología, Glaciología y Ciencias Ambientales (IANIGLA), 30 Years of Basic and Applied Research on Environmental Sciences, pp 243-247.
- Galliski, M.A., Perino, E., Gasquez, J., Marquéz Zavala, M.F., Olsina, R., 1997.** *Geoquímica de Feldespatos Potásicos y Muscovita como Guía de Exploración de Pegmatitas Graníticas de Algunos Distritos de la Provincia Pegmatítica Pampeana.* Revista Asociación Geológica Argentina, v. 52 (1): 24-32.
- Galliski, M.A., Marquéz Zavala, M.F., Saavedra, J., 1999.** *Mineralogía y Geoquímica de las Micas en las Pegmatitas Santa Elena y El Peñón, Provincia Pegmatítica Pampeana, Argentina.* Revista Geologica de Chile, Vol. 2, No.1. Servicio Nacional de Geología y Minería, Santiago, Chile.
- Galliski, M.A. 2009.** *The Pampean Pegmatite Province, Argentina: A Review.* Universidade Federal de Pernambuco, Centro de Tecnologia e Geociências, Departamento de Geologia, Estudos Geológicos v. 19 (2).
- Herrera, A. O., 1961,** *Estructura interna de las pegmatitas micacíferas de Alta Gracia (Prov. de Cordoba):* Rev. Asoc. Geol. Arg., tomo XVI, p. 15-34.
- Herrera, A. O., 1963,** *Las pegmatitas de las Sierras de San Luis. Estructura interna, mineralogía y génesis:* Rev. Asoc. Geol. Arg., tomo XVIII, p. 44-71.
- Herrera, A. O., 1964,** *Las pegmatitas de la provincia de Catamarca. Estructura interna, mineralogía y génesis:* Rev. Asoc. Geol. Arg., tomo XIX, p. 36-56.
- Herrera, A. O., 1968,** *Geochemical Evolution of Zoned Pegmatites of Argentina,* The Economic Geology publishing Company, Economic Geology, v.63: 13-29.
- Lottner, U., 1983.** *Las pegmatitas de la Siena de Ancasti.* En: Aceñolaza, F. G., Miller, H. y Toselli, A. J. (Ed.): Geología de la Sierra de Ancasti, pp. 137-151. Münstersche Forschungen zur Geologie und Paltiontologie, 59.
- Marconi, C.R., 1972.** *Cubicación de Tres Yacimientos Litíferos del Dpto. El Alto, Prov. de Catamarca.* Servicio Nacional Minero Geológico, Carpeta 759, 29 pp., Buenos Aires. (Inédito).
- Rossi, N., 1965.** *Manifestaciones Litíferas del Dpto. El Alto ,Prov. De Catamarca.* Instituto Nacional Geologia Minería, Carpeta 608 38 pp., Buenos Aires (Inédito).

**For further information please contact:**

Chris Gale  
Managing Director  
Latin Resources Limited  
+61 8 6181 9798

Brooke Picken  
Pac Partners  
Melbourne  
+61 3 8633 9866

**About Latin Resources**

*Latin Resources Limited is a mineral exploration company focused on creating shareholder wealth through the identification and definition of mineral resources in Latin America. The Company has secured over 70,000 hectares of exploration concessions in the lithium pegmatite district of Catamarca in Argentina.*

*The company also has a portfolio of projects in Peru and is actively progressing its Iron Oxide-Copper-Gold and Copper Porphyry projects in the Ilo region with its joint venture partners.*

[info@latinresources.com.au](mailto:info@latinresources.com.au)

[www.latinresources.com.au](http://www.latinresources.com.au)

