



ASX Code: SEG

18 October 2016

Market Announcements Platform
ASX Limited
Exchange Centre,
20 Bridge Street
Sydney NSW 2000

EXPLORATION UPDATE – GASCOYNE LITHIUM AND BARLEE GOLD PROJECTS

Segue Resources Limited (**Segue** or the **Company**) is pleased to provide the following update on its exploration activities at the Gascoyne Lithium and Barlee Gold Projects in Western Australia.

Gascoyne Lithium Project

Segue has completed its second phase of exploration at the Gascoyne Lithium Project, 250km east of Carnarvon in Western Australia. The project area has a well-developed drainage network suitable to first pass surface geochemical exploration. The exploration programme consisted of over 1,400 stream sediment samples covering approximately 1,000km² of exploration licences prospective for lithium-caesium-tantalum pegmatites (**Figure 1**).

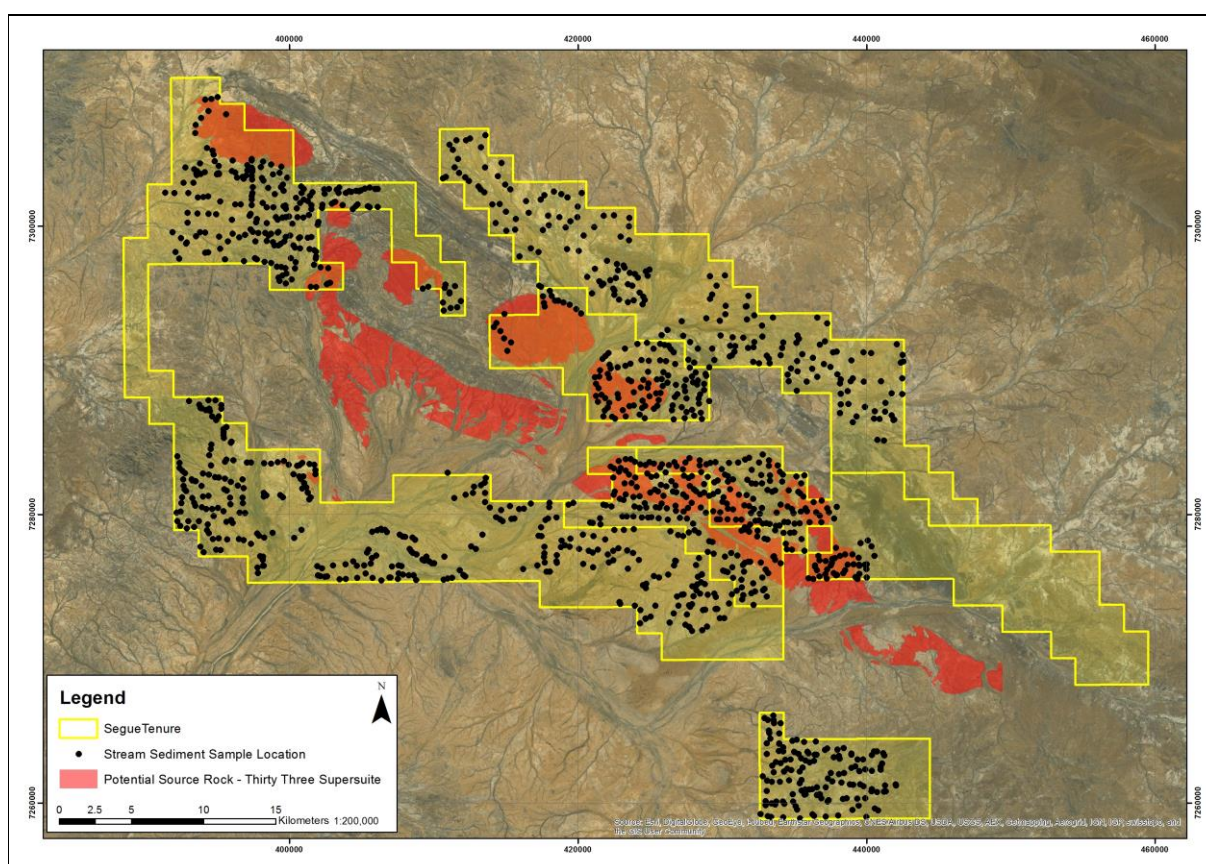


Figure 1: Gascoyne Lithium Project – stream sediment sampling showing Thirty Three Supersuite granitic intrusions

Previous exploration work by Segue has identified the Thirty Three Supersuite (c995-954 Ma) as being the potential source granitic intrusion for LCT pegmatites. The current exploration programme encountered pegmatite swarms throughout the project area with previously unidentified pegmatites discovered to the south of the target host intrusions. The pegmatites are consistent with known lithium mineralisation in the area (April pegmatite).



Figure 2: Contact between Thirty Three Supersuite and Gascoyne Province metasediments

The stream sediment samples have been sent for assaying with the results expected to be received within four weeks (mid-November). The assay results will be used to identify areas of lithium and associated element enrichment (Li-Ce-Ta-Nb \pm Rb-Be).



Figure 3: Stream sediment samples

Barlee Gold Project

As previously announced, Segue has applied for two exploration licences at the Barlee Project covering 300km² of highly prospective greenstone belts, 180km north of Southern Cross in the Eastern Goldfields of Western Australia. The Barlee Project covers 40 strike kilometres of the Evanston, South Elvire, Mount Elvire and Yerligee Greenstone Belts which straddle the Evanston and Yuinmery Shear Zones.

Segue has commenced an initial rock chip and multi-element geochemical orientation survey designed to test the outcropping greenstone belts (**Figure 4**). The exploration programme will be completed by the end of October, with assay results expected to be received by the end of November.

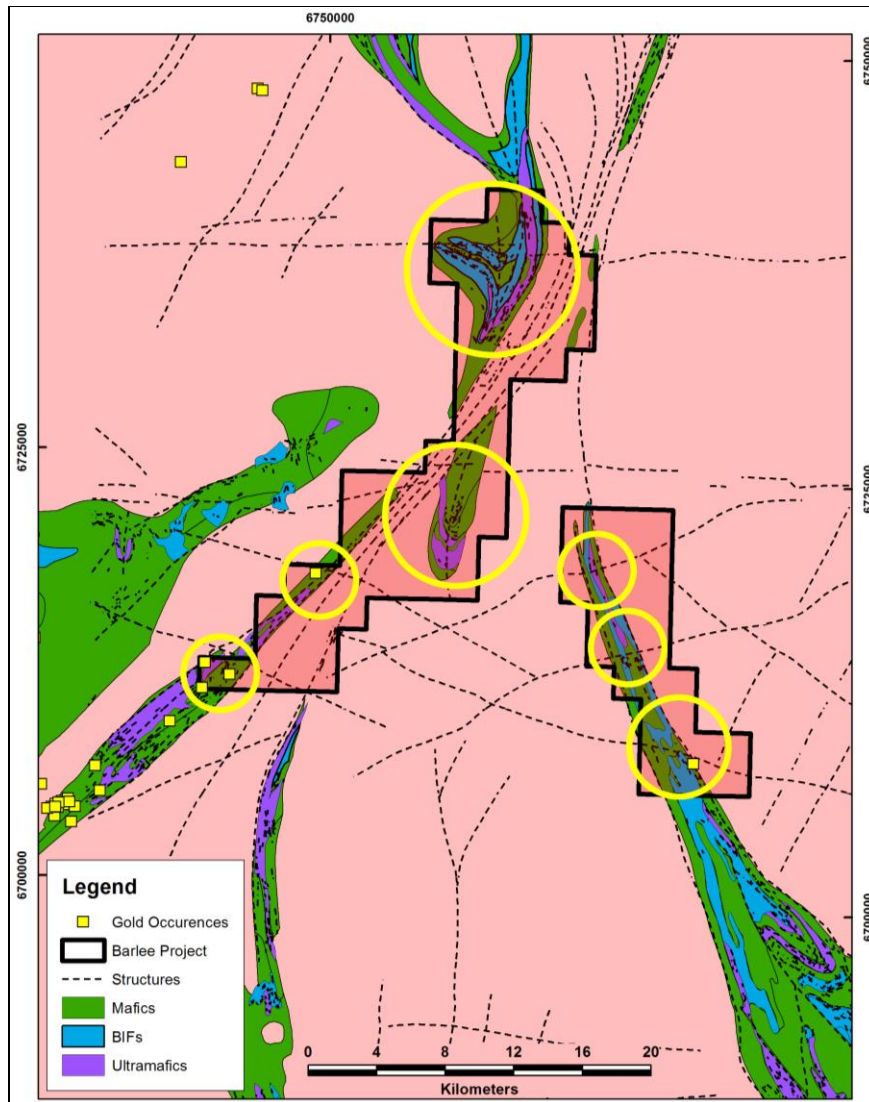


Figure 4: Barlee Project detailed map showing initial target areas (yellow circles)

For further information visit www.segueresources.com or contact:

Segue Resources Limited

Mr Steven Michael

Managing Director

E: info@segueresources.com