



ASX ANNOUNCEMENT

5 September 2016

Aurora Tank – Gold Drilling Starts

Marmota Energy Limited (ASX: MEU) (“Marmota”)

KEY POINTS

- Aurora Tank (EL 5589) is situated about 50km NE of the Challenger gold mine [see [Fig. 2](#)]
- Drilling at Aurora Tank **has started** on 4 September 2016

- 98 angled aircore drill holes at 50 metre depths (approximate)
- Total drilling (approximately): 4,900m
- Drill grid is shown in [Fig. 1](#).

- Drilling will test the Goshawk Prospect at Aurora Tank with the intention of fully defining geochemical dispersion from gold mineralisation
- Drilling is anticipated to take approximately 3 weeks

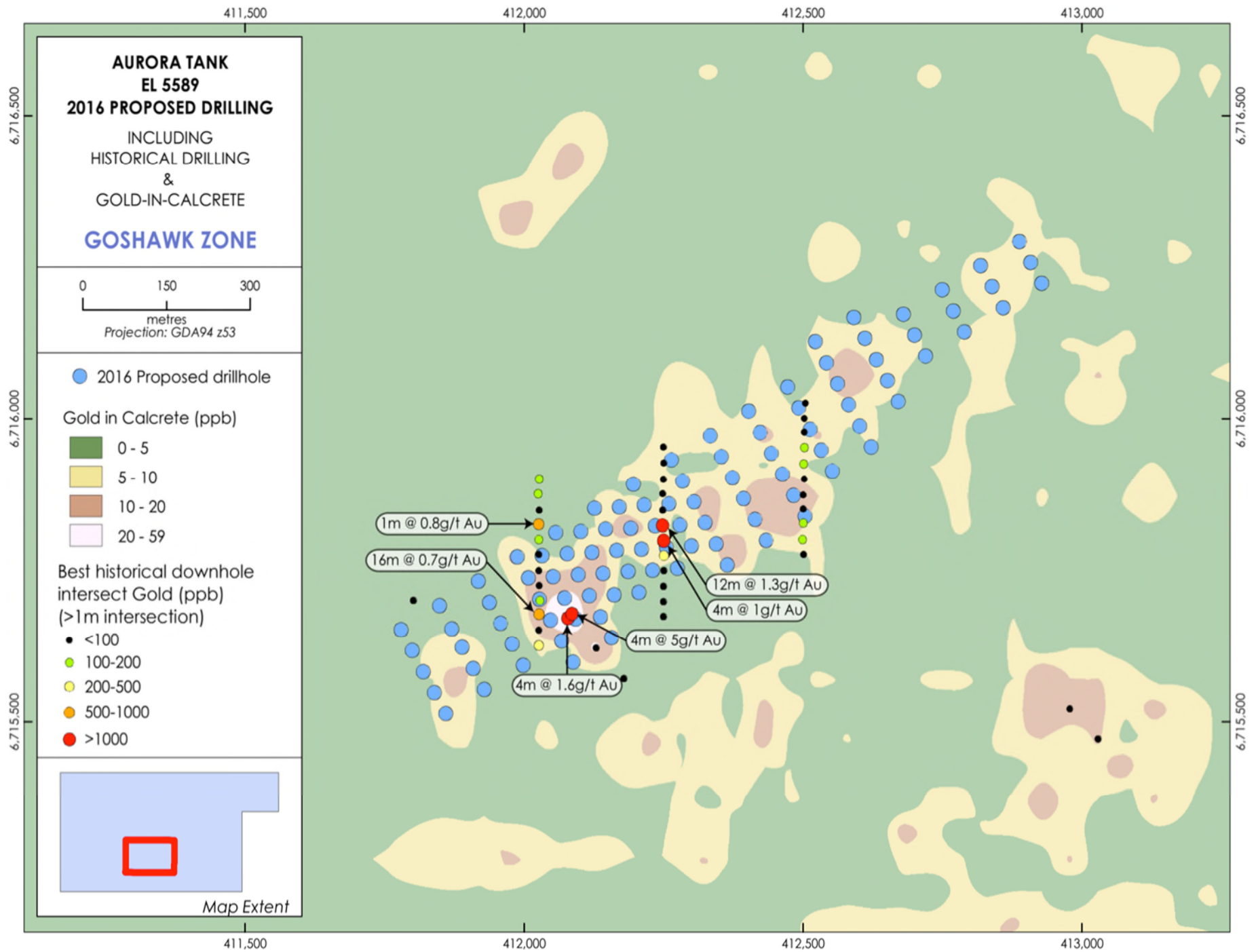


Figure 1: September 2016 drill grid ● (with previous drilling locations / results)

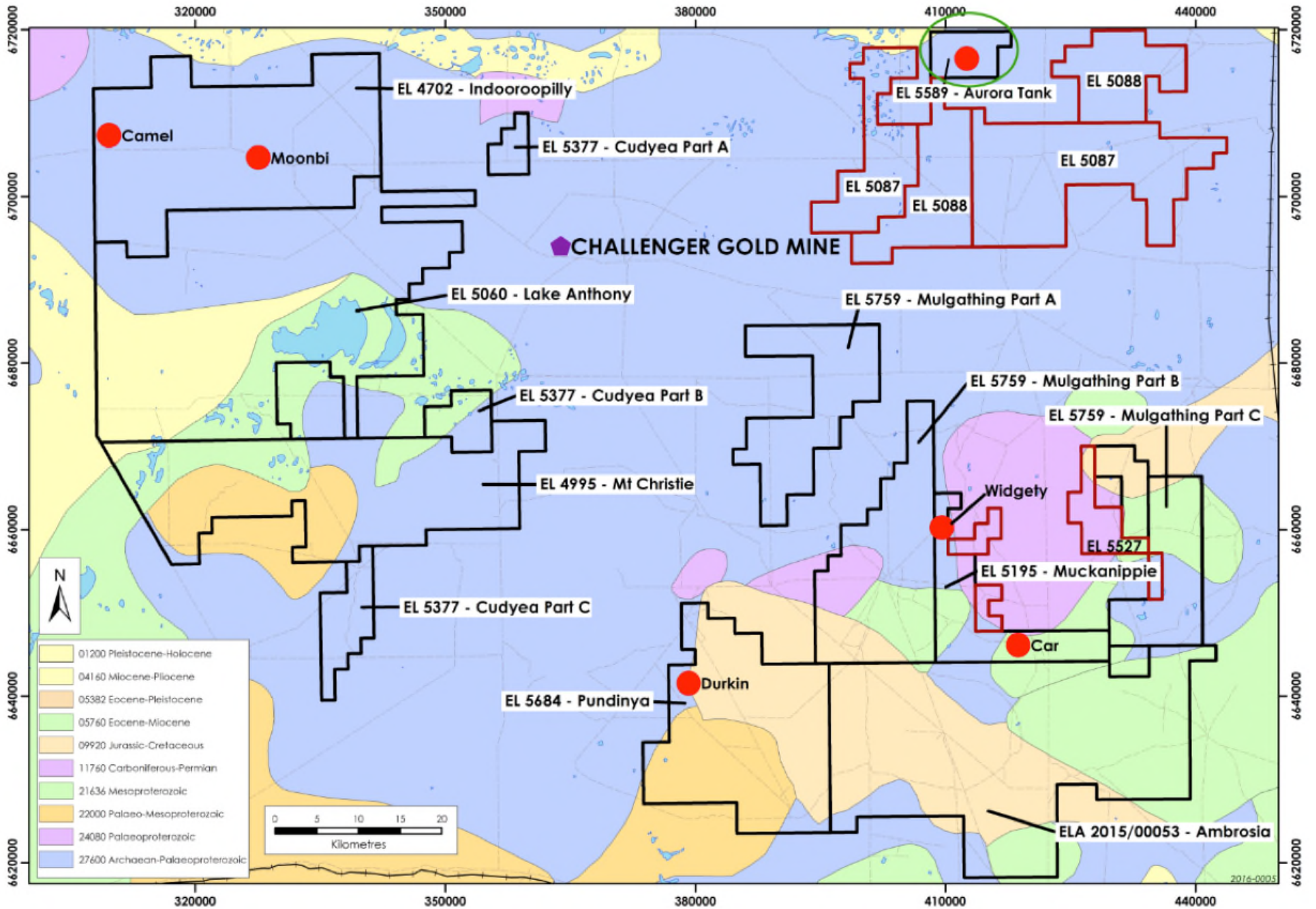


Figure 2: Marmota's Aurora Tank tenement and tenements around the Challenger Gold Mine

- Mineralised zone is interpreted to extend for at least 500m along strike and open in all directions
- Early stage drilled intersections include [see AON ASX Releases: [21 October 2014](#) and [9 June 2015](#)]::
 - 4m at 5 g/t gold from 16m
 - 16m at 1 g/t gold from 20m, including 12m at 1.3 g/t Au from 20m
 - 16m at 0.7 g/t gold from 19m, including 4m at 0.9 g/t Au from 31m

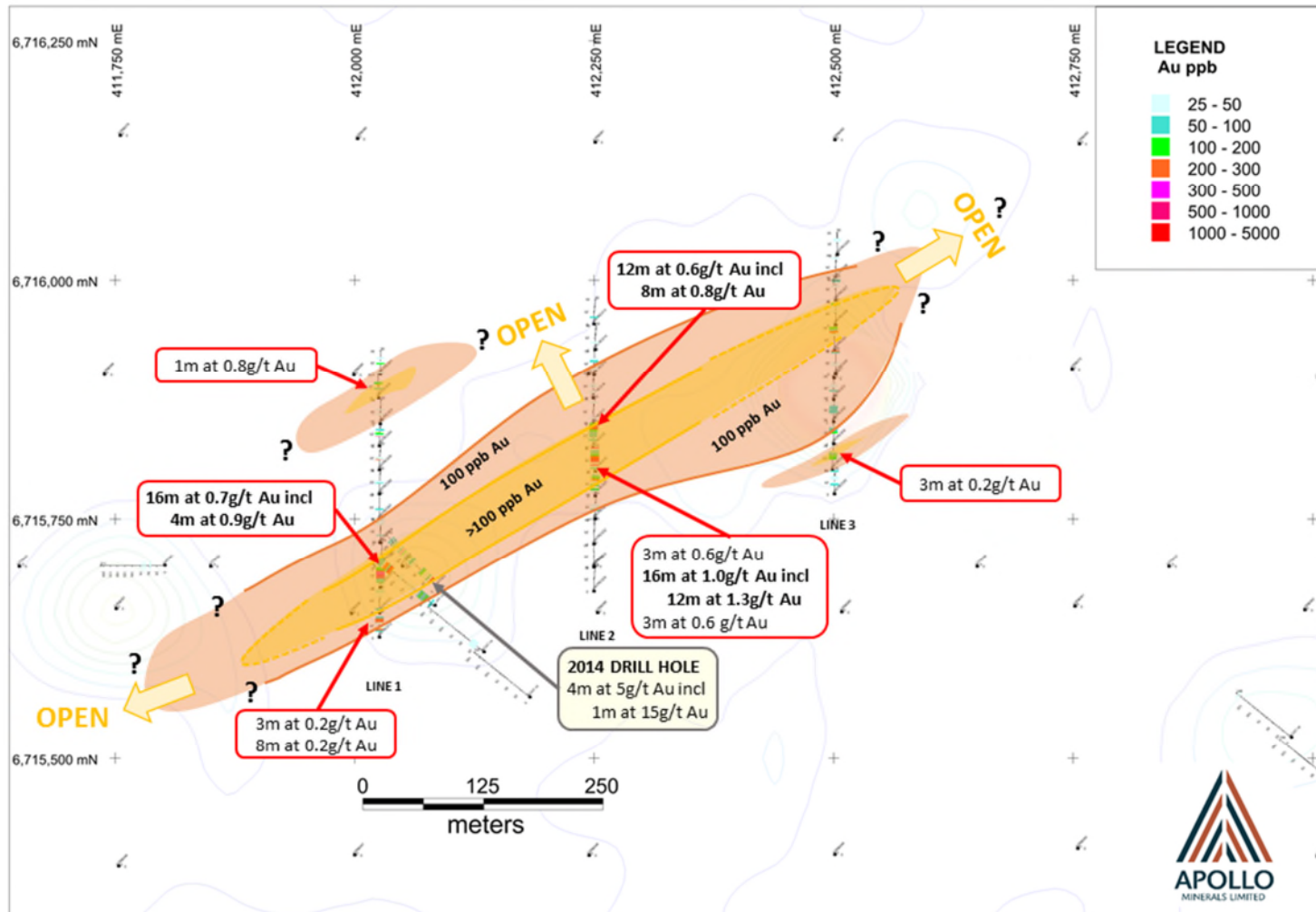


Figure 3: Aurora Tank (Goshawk Zone) – interpreted zone of interest with previous drilling results

For further information, please contact:

Marmota Energy Limited

David Williams Managing Director

Email: info@marmotaenergy.com.au

Unit 6

79-81 Brighton Road

Glenelg SA 5045

ABN: 38 119 270 816

T: (08) 8294 0899

F: (08) 8376 8633

www.marmotaenergy.com.au

About Marmota Energy Limited

Marmota Energy Limited (ASX: MEU) is a South Australian mining exploration company, focused on gold, copper and uranium. Gold exploration is centred on the Company's dominant tenement holding in the highly prospective and significantly underexplored Gawler Craton, near the Challenger gold mine, in the Woomera Prohibited Defence Area. The Company's cornerstone copper project is based at the Melton project on the Yorke Peninsula. The Company's largest uranium project is at Junction Dam adjacent to the Honeymoon mine. For more information, please visit: www.marmotaenergy.com.au