



ACN 009 253 187

**AUSTRALIAN SECURITIES EXCHANGE ANNOUNCEMENT**

**16 May 2016**

**EDEN ENERGY LTD – EDENCRETE™ US UPDATE**

Please see attached ASX Announcement by Eden Energy Ltd (ASX: EDE) for further details.

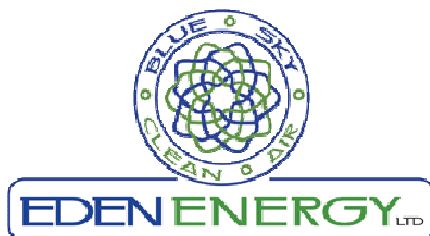
**Background**

Tasman through its wholly owned subsidiary, Noble Energy Pty Ltd, holds 493,198,298 fully paid shares in Eden (representing 44.33% of the total issued capital of Eden) and 101,356,779 EDEO options representing 44.54% of the issued EDEO options. This equates to 1.31 EDE shares and 0.27 EDEO options held for every Tasman share issued.

Based on the last traded prices on the ASX of EDE (\$0.305) and EDEO (\$0.27) on 13/5/16, this investment had a market value of \$177 million, which is equivalent to 47.1 cents for every currently issued TAS share.

A handwritten signature in black ink, appearing to read 'Aaron Gates', with a long horizontal stroke extending to the right.

Aaron Gates  
Company Secretary



ACN 109 200 900

## AUSTRALIAN SECURITIES EXCHANGE ANNOUNCEMENT

16 May 2016

### EDENCRETE™ - US UPDATE

#### MARTA Mobility Facility Project Completed in Georgia

Eden Energy (“Eden”) (ASX: EDE) is pleased to announce that it has successfully completed its first commercial government infrastructure project that was undertaken at the Metropolitan Atlanta Rapid Transit Authority (MARTA) Brady Mobility Facility in Atlanta.

A section of a new concrete hardstand area was installed using EdenCrete™ enriched concrete at a new state-of-the-art bus garage that is being constructed at the new MARTA Brady Mobility facility on the site of the existing bus garage (see Figure 1).



Figure 1. Brady Mobility Facility with EdenCrete™ slab site being prepared (shown in upper left)

The final area that was selected for the project was larger than originally planned and in consequence, using all the available EdenCrete™ admixture that had been supplied by Eden, 17 truck loads of concrete, with EdenCrete™ added at a dosage rate equal to 3 gallons per cubic yards of concrete, were used to construct the section of the Brady facility (see Figure 2).



**Figure 2. EdenCrete™ enriched slab being installed**

At this dosage rate, which was lower than had originally been planned due to the increased volume of concrete that was required, the EdenCrete™ is still anticipated to at least double the service life of the concrete by enhancing the concrete's resistance to abrasive wear, increasing its flexural strength and also its durability due to reduced permeability.

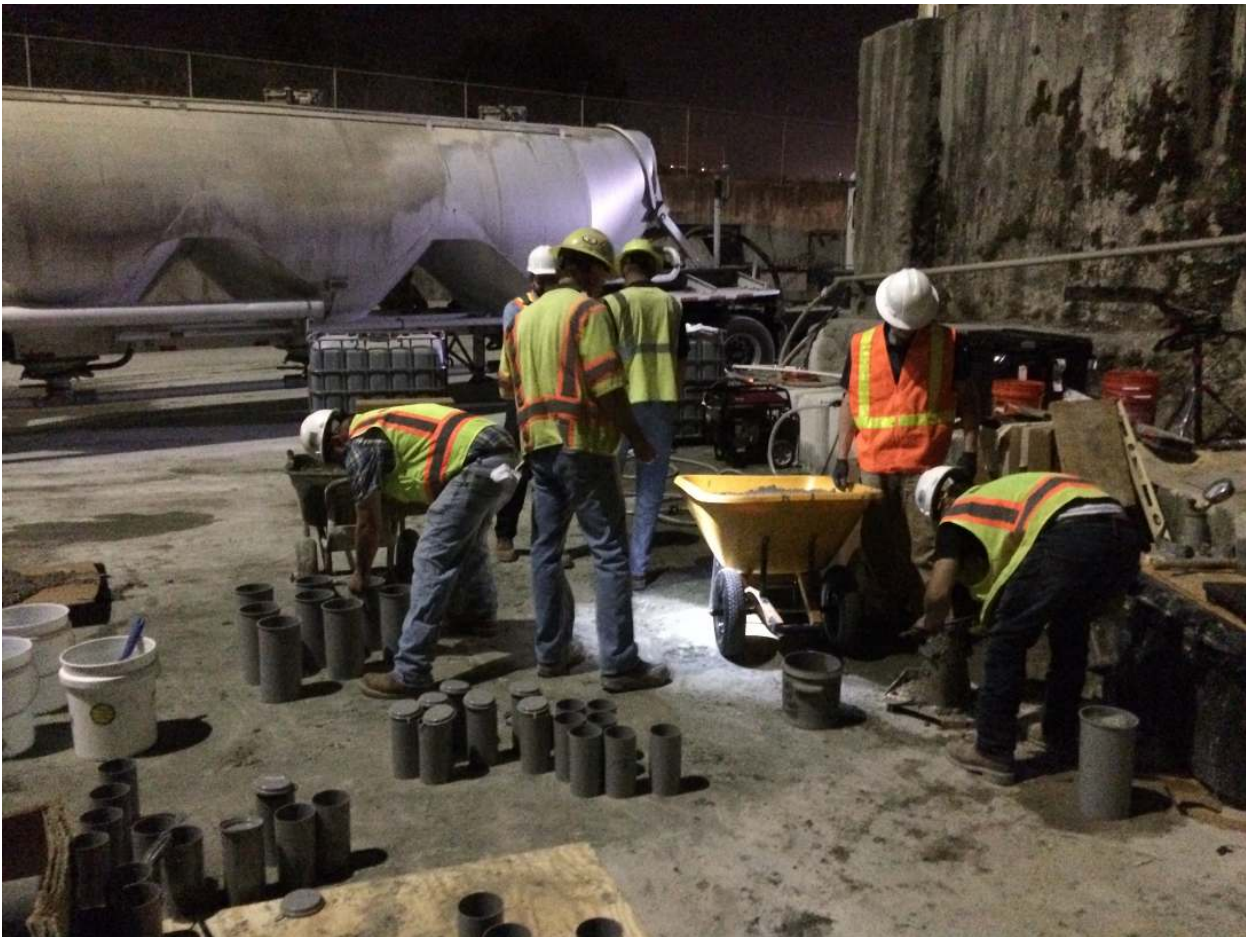
The state of the art facility\* will house the administrative functions, operations, and maintenance facilities for a fleet of up to 200 Mobility vehicles (specialized vans and cutaway buses). The EdenCrete™ section will be subjected to extreme rolling frictional forces due to the constant wear and abuse of large vehicle tyres when turning on the slab from day to day, and will be evaluated over time relative to the rest of the concrete not containing EdenCrete™.

The targeted extension of concrete service life is intended to ultimately reduce the in-service cost for the project by significantly deferring disruptive and costly repair projects due to excessive cracking and/or abrasion over time.

The EdenCrete™ concrete that was used in the trial will also be comprehensively tested against the same concrete mix but containing no EdenCrete™, in an approved, independent laboratory in Atlanta. The testing at various times will cover compressive strength, split tensile, abrasion resistance, permeability, shrinkage and freeze/thaw. The numerous test cylinders that will be required for this purpose were made up on the site at the start of the pour early in the morning (see Figure 3).

\* <http://maintenancedesigngroup.com/projects/marta-brady-mobility-facility/>





**Figure 3. Preparation of Numerous Cylinders of Concrete for Testing**

MARTA, which has served the Atlanta metropolitan area for more than 35 years, operates a number of sustainability programs that are applied to many areas within the organization including its fleet of compressed natural gas (CNG) buses. For instance, MARTA's Laredo Bus Garage has the largest solar canopy installation in the state of Georgia, and the second largest structure of its kind at a U.S. transit system.

Whilst this first infrastructure contract is only for a small demonstration project, if the laboratory testing and the performance of the EdenCrete™ section of the concrete slab reproduce similar positive results to those achieved in earlier field and laboratory tests focusing on similar performance characteristics, it will be a further significant milestone for Eden in its ongoing efforts for EdenCrete™ to penetrate and become accepted for use in the huge U.S. infrastructure market.

### **BACKGROUND**

*EdenCrete™ is Eden's 100% owned, proprietary carbon-strengthened concrete additive, one of the primary target markets for which is improving the performance of concrete used in the construction and maintenance of concrete roads, bridges and other infrastructure. Additionally, it has potential for use in a range of other applications including high-rise building construction, marine and coastal applications, highly abrasive and hardwearing applications, water storage and pipelines, and pre-fabricated concrete structures and products.*

**Gregory H. Solomon**  
Executive Chairman