

2015 ANNUAL REPORT

A.B.N. 63 111 306 533

CORPORATE DETAILS

Directors

He, Zuyuan (Non-executive Chairman)
 Xing, Jianhua
 (Non-executive Director, alternate director of He, Zuyuan)
 Xiang, Weidong (Managing Director)
 Lindsay George Dudfield (Non-executive Director)
 Geoffrey Michael Jones (Non-executive Director)
 Zhong, Yu (Non-executive Director)
 Zhang, Zimin (Non-executive Director)

Company Secretary

Li, Xuekun

Registered Office

Level 2
 28 Kings Park Road
 WEST PERTH WA 6005
 Telephone: 61 8 9322 6904
 Facsimile: 61 8 9321 5240
 Email: enquiry@energymetals.net
 Web: www.energymetals.net

Auditor

Deloitte Touche Tohmatsu
 Brookfield Place Tower 2
 123 St Georges Terrace
 Perth WA 6000

Share Registry

Security Transfer Registrars Pty Ltd
 770 Canning Highway
 APPLECROSS WA 6153
 Telephone: 61 8 9315 2333
 Facsimile: 61 8 9315 2233

Stock Exchange Listing

The Company's shares are listed by the Australian Securities Exchange Limited ("ASX") - Code EME.
 The home exchange is Perth.

Bankers

National Australia Bank Limited
 100 St Georges Terrace
 PERTH WA 6000

Solicitors

Minter Ellison
 Allendale Square
 77 St Georges Terrace
 PERTH WA 6000

CONTENTS

Chairman's Statement	1
Review of Activities	2
Directors' Report	20
Remuneration Report	26
Consolidated Financial Statements	33
Directors' Declaration	63
Auditor's Independence Declaration	64
Auditor's Report	65
Additional Information	67

CHAIRMAN'S STATEMENT

Dear Shareholders

The Year 2015 was another challenging year for the uranium industry, which saw soft investment sentiment and difficult market conditions continued.

Despite the depressed environment, there were positive signs for the recovery of the commodity during the year. Japan restarted its Sendai Reactor No 1 in August 2015 after a four-year hiatus following the Fukushima accident. Subsequently in October 2015 and February 2016, the Sendai Reactor No. 2 and the Takahama Reactor No. 3 were restarted. It is expected that between 6 and 12 more plants will resume normal operation by March 2017. Meanwhile, China has continued to show a firm determination to use clean energy. The second largest world economy currently has 32 nuclear power reactors in operation, 22 under construction, and more about to start construction. In India, a flourishing and largely indigenous nuclear power programme has been established, with an expectation to have 14.6 GWe nuclear capacity on line by 2024 and 63 GWe by 2032.

All these encouraging signs support Energy Metals' belief in the uranium price cycle is in a slow but steady state of recovery. Driven by population growth and climate change policies, there is little doubt that the demand of uranium will grow around the world, particularly in Asia and developing countries and the medium to long-term outlook of the commodity remains promising.

During the year Energy Metals continued to closely monitor its exploration spending while protecting shareholders' value and seeking opportunities to grow its assets. After studying and reprocessing historical exploration data, the Company was able to estimate maiden JORC U₃O₈ resources of 7,037 tonnes, 419 tonnes and 691 tonnes for its Walbiri Deposit, Walbiri Satellite Deposit and Karins Deposit, respectively. Whilst the Company incurred minimum expenditure, its tenement assets were maintained in good standing over the period.

Energy Metals' prudent capital management and continuing cost reduction programs enabled the Company to finish the year with cash and bank deposits of more than \$21.7 million. This strong balance sheet enables the Company to continue to make good progress during difficult times and to be well positioned to take advantage of opportunities when they occur.

In closing, I wish to thank the shareholders for their patience and their faith in Energy Metals. I would also like to, on behalf of the Board, extend my appreciation to the management and all employees for their hard work and achievements over the past year.

Chairman

REVIEW OF ACTIVITIES

Energy Metals Ltd (EME) is a dedicated uranium company with eight projects located in the Northern Territory (NT) and Western Australia covering tenement areas around 4,000 km² in size (Figure 1). Most of the projects contain uranium mineralisation discovered by major companies in the 1970s, including the advanced Bigrlyi Project (NT), which is characterised by relatively high uranium grades (with vanadium credits) and excellent metallurgical recoveries.



Figure 1: Energy Metals Project Location Map

Australia has significant uranium endowment with the continent containing approximately 29% of the world's low cost uranium resources. With the improving political and public sentiment to uranium mining in Australia and nuclear power playing an increasing role in reducing global carbon emissions Energy Metals is well placed to take advantage of the favourable outlook for the metal.

Furthermore Energy Metals' largest shareholder (with 66.45% of issued capital) is China Uranium Development Co., Limited, a wholly owned subsidiary of major Chinese utility China General Nuclear Power Group (CGN) (formerly known as China Guangdong Nuclear Power Holding Company). As of 31 March 2016, the installed capacity of CGN's operating nuclear generating plants was 17,090 MWe from 16 nuclear power units with 12 other power units of 14,650 MWe capacity under construction in various locations across China. CGN is one of only two companies authorised by the Chinese Government to import and export uranium. This unique relationship with CGN

gives Energy Metals direct exposure to the uranium market as well as access to significant capital and places the Company in a very strong position going forward.

NORTHERN TERRITORY

Bigrlyi Joint Venture (EME 53.3%)

The Bigrlyi Deposit is a tabular, sandstone-hosted uranium-vanadium deposit located on the northern margin of the Ngalia Basin, 350 km northwest of Alice Springs. It is comprised of three main sub-deposits over 11 km of strike length: Anomalies 2, 4 and 15 (Figure 2). The Bigrlyi Joint Venture (BJV) comprises 10 granted exploration licences in retention (ELRs), that cover the Bigrlyi Deposit, as well as three granted exploration licences (ELs) over various historical prospects, and several historical applications covering the Karins Deposit (Figures 3). During the year one licence (EL30689), located 25 km east of the Bigrlyi Deposit, was granted. The BJV is a joint venture with Valhalla Uranium, a subsidiary of Paladin Energy Ltd (41.7%) and Southern Cross Exploration (5.0%). Significant exploration activity occurred at the Bigrlyi Deposit in the period 1974 to 1982, including over 400 drill holes, resource estimations and metallurgical test work programs. The project was put on care and maintenance in 1983.

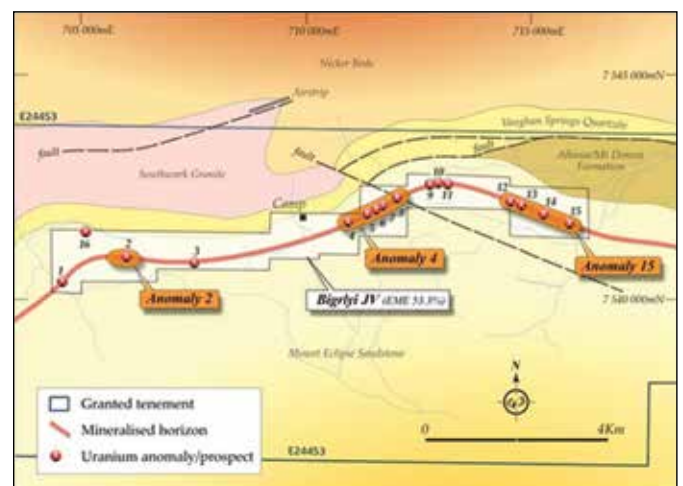


Figure 2: Plan of the Bigrlyi Deposit and JV tenements

REVIEW OF ACTIVITIES

Work Completed 2005 to 2014

Energy Metals, as manager of the Bigirlyi Joint Venture (BJV), recommenced field activities in November 2005 after a 23 year hiatus and following a detailed environmental assessment of the project and installation of appropriate radiation monitoring procedures. Initial work included re-establishment of the exploration camp, validation of historic drilling and assay data and Aboriginal heritage surveys over the Bigirlyi tenements.

Several drilling programs, concentrating mostly on the Anomaly 4 and Anomaly 15 deposits, were completed at Bigirlyi in the period from 2005 to 2011 with most holes intersecting significant uranium mineralisation. Uranium and vanadium resource estimates were successively modelled incorporating results from these drilling programs. The latest resource estimate (Table 1) was released in July 2011, with resources estimated by Hellman & Schofield Pty Ltd using the Multiple Indicator Kriging (MIK) method to estimate uranium resources and Ordinary Kriging (OK) to estimate vanadium resources.



Figure 3: EME's Ngalia Basin projects showing tenements, uranium deposits & prospects

Table 1: Bigirlyi Mineral Resource estimate at a 500 ppm U3O8 cut-off

Resource Category	Mt	U ₃ O ₈ ppm	V ₂ O ₅ ppm	U3O8 kt	U ₃ O ₈ Mlbs	% Contrib	V ₂ O ₅ kt	V ₂ O ₅ Mlbs
Indicated	4.65	1366	1303	6.36	14.01	62	6.06	13.36
Inferred	2.81	1144	1022	3.21	7.08	38	2.87	6.33
Total	7.46	1283	1197	9.57	21.09	100	8.93	19.69

Kilotonnes (kt) are metric (2.20462 Mlb); figures may not total due to rounding.

Detailed metallurgical testwork has confirmed that the major uranium bearing minerals are uraninite and coffinite, and the major vanadium bearing mineral is montroseite. This work has also confirmed the excellent acid extraction characteristics of the Bigirlyi ore with acid leach of up to 98% uranium and 59% vanadium recorded from base-case tests. Physical grinding (comminution) testing and 'front-end' processing testwork has also produced encouraging results.

A Pre-Feasibility Study (PFS) completed mid-2011 confirmed that mining the Anomaly 4, Anomaly 15 and Anomaly 2 deposits using a combination of open pit and underground mining and processing ore through a relatively simple acid leach circuit would produce around 10Mlb U₃O₈ and positive cash flow of around \$120M over a mine life of approximately 8 years. However, one key finding was that a substantial increase in the resource base that underpins the project would have a positive impact on the economics of the project, especially if those resources are amenable to open pit mining. To this end, in the period 2012 to 2014 Energy Metals exploration activities focussed on the discovery and definition of additional resources in satellite deposits located on 100% Energy Metals ground in proximity to the main Bigirlyi resource. These programs have been aided by the application of geophysical techniques, in particular gradient-array induced polarisation (IP) surveys in order to locate sandstone units favourable for hosting uranium mineralisation under sand cover.

REVIEW OF ACTIVITIES

Work Completed in the Twelve Months to 31 December 2015

Due to the depressed uranium market and consequent budget constraints, only limited exploration activities were undertaken at Bigirlyi and the other joint venture tenements. In addition to camp and site maintenance, rehabilitation works were undertaken at Anomaly 15 to remediate a number of hillside drill pads. The works were completed to the satisfaction of the NT Department of Mines and Energy (see Figure 4) resulting in the return of over \$200K in environmental bonds. On other BJV tenements, historical exploration data were compiled and verified during the year allowing maiden JORC mineral resources to be estimated for the Karins and Sundberg Deposits.



Figure 4: Rehabilitated drill pad A7 at Bigirlyi Anomaly-15, August 2015.

Karins Deposit Maiden Resource

The historical Karins deposit is located approximately 260km northwest of Alice Springs in the Ngalia Basin (Figure 3). The deposit lies on tenement applications MLN1952 and MCS318-328 which are part of the Bigirlyi Joint Venture. The Karins area was recognised as prospective for sandstone-hosted uranium by Central Pacific Minerals (CPM) in 1973 following discovery of carnotite in drill cuttings from a seismic shot hole. Subsequent exploration work, including the drilling of 110 exploration holes, was carried out by CPM in the period 1974 to 1981. EME acquired CPM's interest in the project in 2005, including all the historical exploration records.

Karins is a tabular uranium-vanadium-style deposit similar to the Bigirlyi deposit, although with an oxidised zone (carnotite zone) of variable thickness that extends from near surface to as much as 60m depth. Drilling by CPM showed the presence of widespread uranium mineralisation, which occurs as a series of discontinuous sheets or pods, over a strike length of approximately 5.8 km. Mineralised zones, which typically vary in thickness from 0.2 to 6 metres, were intercepted from surface to approximately 100 m depth within shallowly dipping (15 to 22 degrees) sandstone beds of the Mt Eclipse Formation (see Figure 5). Significant drill intercepts include:

- 1.3m at 4,092 ppm eU_3O_8 from 7.7m in RPH95
- 1.9m at 1,200 ppm eU_3O_8 from 87.0m in RPH83
- 6.1m at 830 ppm eU_3O_8 from 10.9m in RPH64

All relevant drilling data, gamma logging data and geological data including lithological logs have been converted to digital format, verified and loaded into EME's database. Following a data review, EME's resource consultants confirmed that the data were of sufficient quality to proceed with JORC-compliant resource estimation.

REVIEW OF ACTIVITIES

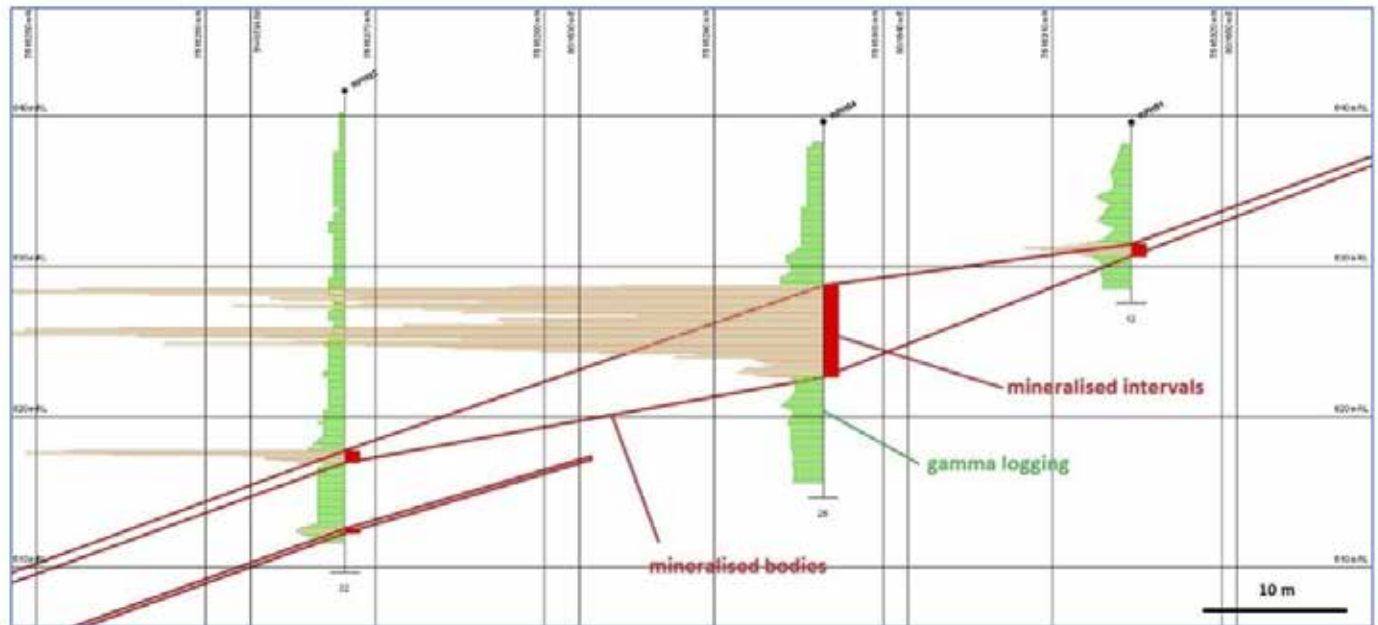


Figure 5: Example of the Interpretation of Mineralised Bodies along the RPH92, RPH64, RPH91 section.

The following maiden Mineral Resource Estimate (JORC, 2012) for the historical Karins Deposit was announced to ASX on 1 July 2015:

Table 2: Estimate of Mineral Resources for the Karins Deposit (200ppm U_3O_8 cut-off)*

Category	Type	Volume, '000 m ³	Tonnes, '000 t	Grade		Mineral Resources	
				U_3O_8 , ppm	U, %	U_3O_8 , tonnes	U_3O_8 , M lb
Inferred	Oxidised	290	719	526	0.045	379	0.83
Inferred	Primary	211	524	597	0.051	312	0.69
Inferred	Total	501	1,243	556	0.047	691	1.52

* Energy Metals' interest in the total resource is 53.3%

The Mineral Resources have been classified and reported in accordance with JORC (2012) requirements. The resource classification is based on the assessed level of confidence in sample methods used, geological interpretation, drill spacing and geostatistical measures.

EME believes the mineral resources defined here make a valuable contribution to total regional uranium resources in the Ngalia Basin, and being located at open pittable depths will enhance the economics of any potential regional mining development.

REVIEW OF ACTIVITIES

Sundberg Deposit Maiden Resource

In October 2015, a maiden JORC resource estimate was announced for the historic Sundberg deposit (Figure 3), a satellite deposit to the larger Walbiri Deposit. Sundberg is partly located on Bigrlyi JV tenement EL30145 (see below for further information).

Future Activities

Exploration activities at Bigrlyi during the 2016 field season are dependent on approval of exploration and/or development budgets by the Joint Venture operating committee. Because of current market conditions, the Joint Venture is currently operating on a minimum budget.

Walbiri Joint Venture (EME 41.9%)

The Walbiri JV project located on ELR45 is a joint venture with Paladin Energy Ltd (58.1%), with EME as the operator. ELR45, granted in August 2014, covers part of the historical Walbiri

Deposit and part of the Hill One satellite deposit (Figure 3). In October 2015, an inferred resource of 7,037 tonnes U_3O_8 at 641ppm (200ppm cut-off) was announced for the Walbiri Deposit, confirming Walbiri as the third largest sandstone-hosted uranium deposit in central Australia after Angela and Bigrlyi (refer to ASX announcement of 27th October 2015 and Table 1 below in the Ngalia Regional section for further details).

Malawiri Joint Venture (EME 52.1%)

The Malawiri JV project located on ELR41 is a joint venture with Paladin Energy Ltd (47.9%) with EME as the operator. ELR41, granted in August 2014, covers the historical Malawiri prospect along strike to the west of Paladin's Minerva Deposit. A program of digitisation and reprocessing of historical gamma logs, core re-logging (Figure 6), historical data compilation and verification, and geological model development (see below) was completed in 2015 in preparation for future exploration and resource estimation programs. Further work in 2016 is subject to joint venture funding.



Figure 6: Basal conglomerate in hole GCRD10, Mt Eclipse Sandstone, Malawiri prospect.

REVIEW OF ACTIVITIES

Ngalia Regional Project (EME 100%)

The Ngalia Regional project comprises thirteen 100% owned exploration licences (total area approximately 3,470 km²) located in the Ngalia Basin, between 180 and 350 km northwest of Alice Springs (Figure 3). Twelve of these tenements are contiguous and enclose the Bigrlyi JV project as well as containing a number of historic uranium deposits including part of the historic Walbiri Deposit, located 55km SE of Bigrlyi. The remaining tenement is located southwest of Bigrlyi.

Nine of the 13 Ngalia Regional Exploration Licences have been granted by the Northern Territory Department of Mines and Energy (DME). A new tenement application in the prospective eastern Ngalia Basin (ELA 31098) was lodged in late 2015. The remaining three applications (ELs 24450, 24462, & 27169) are located on Aboriginal freehold (ALRA) land and the consent of the Traditional Owners is required before the tenements can be granted. Energy Metals is in negotiations with the Traditional Owners through the Central Land Council (CLC).

The Ngalia Regional uranium prospects are of a similar style to the Bigrlyi Deposit and are hosted in the Carboniferous age Mt Eclipse Sandstone. In early 2014 initial resource estimates were undertaken by consultants CSA Global for three satellite deposits located in proximity to the Bigrlyi Deposit: Anomaly 15 East, Bigwest and Camel Flat. The combined resource is 626 tonnes U₃O₈ at 100ppm cut-off grade. Further details are provided in the ASX Announcement of 13 February 2014. Energy Metals believes these resources will make a valuable contribution to the overall uranium resources at the Bigrlyi project.

Walbiri Deposit JORC Resource Estimate

The highlight for 2015 was the announcement of JORC mineral resources at the historical Walbiri deposit (just over half of which lies on 100% EME ground) and the adjacent Sundberg and Hill One satellite deposits (part of each located on 100% EME ground).

The Walbiri Range area was recognised as prospective for sandstone-hosted uranium following the discovery of outcropping carnotite mineralisation by Central Pacific Minerals (CPM) in late 1971. Subsequent exploration work, including the drilling of 57 exploration holes, was carried out by CPM in the period 1972 to 1976. EME acquired CPM's interest in the project in 2005, including all the historical exploration records. Australian Mineral Development Laboratories (AMDEL) obtained a resource estimate (non-JORC) for the Walbiri Deposit in 1976. AMDEL estimated 4,789 tonnes U₃O₈ for an average grade of 1,140 ppm U₃O₈ (cut-off not specified), indicating Walbiri was not an insubstantial deposit.

Walbiri and its satellite deposits are tabular, sandstone-hosted, uranium-vanadium style deposits similar to the nearby Bigrlyi Deposit. Mineralisation is hosted in the Mt Eclipse Sandstone which is comprised dominantly of arkose, sub-arkosic sandstone and shale deposited in an ancient fluvial channel and alluvial fan system. Mineralisation is stratiform in nature and occurs within a number of semi-continuous lenses confined by shale bands, with the dominant lens occurring immediately above a shale marker band termed the 'C-shale' (Figure 7). The dimensions of the main Walbiri mineralised domain are approximately 3.6 km along strike with an average plan width of 300 m and maximum modelled plan width of 1,100 m. The total combined strike length of the Walbiri Deposit and its two satellite deposits (Sundberg and Hill One) is 8.7 km. Stratigraphy and mineralisation dip between 10° and 18° to the SW and the width of the mineralised interval varies from 0.2m to 7.5m, averaging 1.3m thickness. Mineralisation extends from surface and plunges toward the SE with the deepest drill intercept being 230m below surface.

Data preparation during 2015 included digitisation and reprocessing of historical gamma logs, re-logging of historical core, and legacy data compilation and verification in conjunction with regional Ngalia Basin studies. Energy Metals' resource consultants assessed the data as being appropriate for JORC-compliant resource estimation purposes and Energy Metals proceeded with resource estimation work.

REVIEW OF ACTIVITIES

Significant drill hole intercepts included:

- 7.5m at 1,098 ppm eU₃O₈ from 187.1m in WPH07
- 3.0m at 1,740 ppm eU₃O₈ from 139.9m in NGDD18
- 6.8m at 646 ppm eU₃O₈ from 139.5m in NGRH37A
- 1.0m at 5,340 ppm eU₃O₈ from 171.7m in WPD15

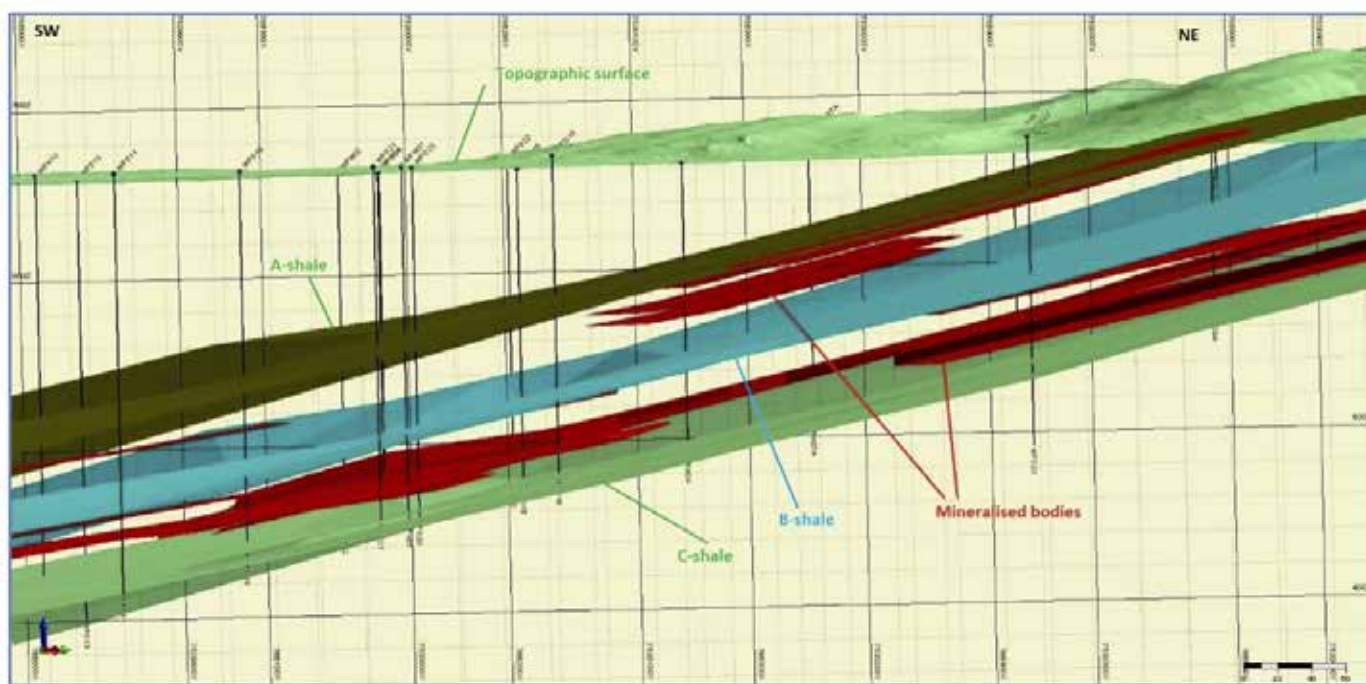


Figure 7: A SW-NE cross-section through the Walbiri Deposit showing wireframe models of lithological domains (brown: A-shale; blue: B-shale and green: C-shale) and mineralised bodies (red).

On 27 October 2015, Energy Metals announced inferred JORC (2012) resources of 7,037 tonnes U₃O₈ at 641ppm for the Walbiri Deposit, 260 tonnes U₃O₈ at 259ppm for the Sundberg Deposit, and 159 tonnes U₃O₈ at 321ppm for the Hill One Deposit (all at 200ppm cut-off); Table 3 shows a summary of results.

Table 3: Estimate of JORC Mineral Resources for Walbiri and Satellite Deposits*

Category	Deposit	Volume '000 m ³	Tonnes '000 t	Grade		Mineral Resources	
				U ₃ O ₈ ppm	U %	U ₃ O ₈ Mib	U ₃ O ₈ tonnes
Inferred	Hill One	192	494	321	0.027	0.350	159
Inferred	Walbiri	4,274	10,983	641	0.054	15.514	7,037
Inferred	Sundberg	391	1,005	259	0.022	0.574	260
Inferred	Total	4,857	12,482	597	0.051	16.438	7,456

* Energy Metals' interest in the total resource is 74.4%

REVIEW OF ACTIVITIES

Table 4: Mineral Resources of the three largest sandstone-hosted uranium deposits in the Alice Springs region

Deposit	Basin	Energy Metals' Interest (%)	No. Resource Drill Holes	Cut-Off U ₃ O ₈ Grade (ppm)	Average U ₃ O ₈ Grade (ppm)	U ₃ O ₈ tonnes
Angela ¹	Amadeus	0	794	300	1,310	13,980
Bigirlyi	Ngalia	53.3	1,057	250	818	12,230
Walbiri	Ngalia	73.4	47	200	641	7,037

¹ Paladin Energy Ltd (100%)

With the mineral resources defined here, the Walbiri deposit is confirmed as the third largest sandstone-hosted uranium deposit in the southern Northern Territory after Angela and Bigirlyi, and is the second largest deposit in the Ngalia Basin (Table 4). These results affirm the standing of the Ngalia Basin as one of Australia's significant uranium provinces.

Because the resource is based on a relatively small number of drill holes (Table 4), Energy Metals believes there is considerable scope for expansion of the resource by both in-fill and along strike extensional drilling. In particular, mineralisation is open to the SE and is likely to be repeated in folded strata of the Mt Eclipse syncline and anticline to the south of the current resource area. In fact, an Induced Polarisation geophysical survey completed in 2013 has delineated a chargeable unit (i.e. prospective reduced sandstone) in the predicted stratigraphic position for Walbiri mineralisation folded around the southern limb of the Mt Eclipse syncline some 2 km south of the resource area; this represents a prime target for future drill testing.

Due to the proximity of the Walbiri and Bigirlyi deposits (Figure 3), Energy Metals considers that a combined future mining development would have a positive impact on project economics through both shared capital costs and increased project mine life. Although mineralisation at Walbiri is known to have certain favourable metallurgical characteristics such as low carbonate content, little work has been done on Walbiri since 1976; modern investigations of deposit metallurgy, hydrology, rock properties and uranium series equilibrium, in addition to drill test work, will be required to advance the project in the medium term.



REVIEW OF ACTIVITIES

Geological Model Development – Ngalia Basin

Following analysis of last year's geophysical survey results, new geological models were developed for the Walbiri South (EL24463) and Malawiri (EL24451) target areas. An important outcome of this work has been the recognition that prospective Mt Eclipse strata is typically intensely folded throughout the Ngalia Basin and therefore structural repetition of mineralisation is highly likely.

A modelled geological cross-section through the Malawiri area (Figure 8) shows that the Mount Eclipse Sandstone is repeated in a series of tight synclinal structures separated by faulted anticlinal axial domains; numerous new target zones in which Malawiri style mineralisation is likely to be repeated have been identified (Figure 8). Exploration targeting work continues throughout Energy Metals' tenure in the Ngalia Basin.

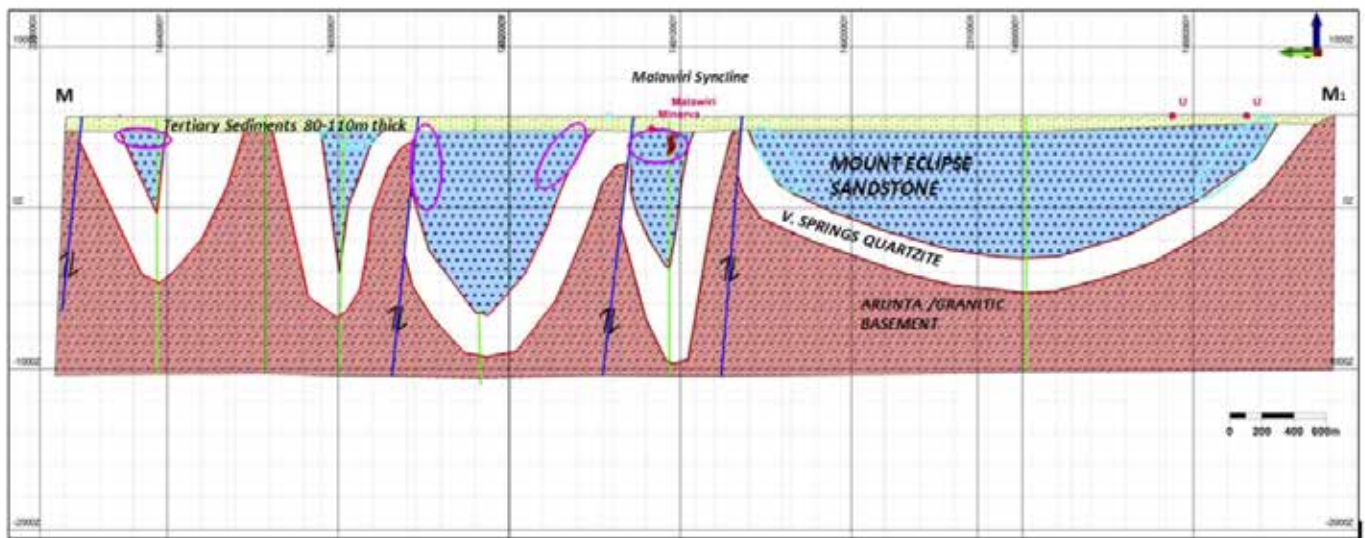


Figure 8: *Interpreted geological cross-section through the Malawiri area showing synclinal structures in which structurally repeated uranium mineralisation is likely to occur (pink and light blue oval areas)*

Tenement Matters

A review designed to ensure Energy Metals' exploration efforts were focussed on the most prospective ground was completed in late 2015. As a result, a relinquishment plan involving partial surrender of low prospectivity areas of ELs 24533, 24453, 24463, 24807 & 24451 and full surrender of EL24805 was approved by the Energy Metals board and implemented in late 2015. An additional tenement, EL31098, located on pastoral lease land adjacent to EL24451 (eastern Ngalia Basin) was applied for in December 2015.

During the year, two ALRA (Aboriginal Land Rights Act) tenements (EL24450 and EL24462), located on Aboriginal freehold land in the Ngalia Basin (Figure 3), were released from their five-year moratorium period enabling Energy Metals to make a case to the Traditional Owners for exploration access to the ground. In accordance with ALRA, section 41 applications were lodged with the Central Land Council and NT Government with follow-up section 42 meetings planned for 2016.

REVIEW OF ACTIVITIES



Figure 9: EME staff attend a meeting with the CLC and Traditional Owners at Yuendumu, September 2015

In September, Energy Metals staff attended a meeting with Aboriginal traditional owners at Yuendumu (Figure 9). The meeting was part of access negotiations with the Central Land Council (CLC) over ALRA tenement ELA27169 is located south of Yuendumu (Figure 3). Energy Metals received a positive response and is hopeful of gaining exploration access in the near future.

Macallan Project (EME 100%)

The Macallan project comprises a single exploration licence application (ELA27333), located 460 km NW of Alice Springs and 140 km from Biglryi. The tenement (area 225 km²) was applied for to cover a strong 3km-wide bullseye radiometric anomaly, identified through the interpretation of regional airborne geophysical data. The anomaly, which lies within the Tanami Desert, occurs in an area dominated by extensive sand plain, dune and sheet wash cover. A recent interpretation of palaeovalley systems within central Australia by Geoscience Australia indicates that the Macallan anomaly lies within the Wildcat Palaeovalley, an ancient valley system that drains into Lake Mackay to the southwest. Energy Metals considers that the Macallan anomaly most likely represents a surficial accumulation of uranium minerals associated with the Wildcat palaeodrainage system though other explanations are possible.

ELA27333 lies on land under Aboriginal Freehold title and Energy Metals is currently in negotiations with the Central Land Council and Traditional Owners to gain access to the ground for exploration. A section 42 meeting under the Aboriginal Land Rights Act is planned in 2016.

REVIEW OF ACTIVITIES

WESTERN AUSTRALIA

Manyingee (EME 100%)

The Manyingee exploration licence (E08/1480) is located 85 km south of the port of Onslow. The tenement (total area 86 km²) surrounds the mining leases containing Paladin Energy's Manyingee resource, a stacked series of paleochannel-hosted, roll-front uranium deposits of Cretaceous age.

Encouraging results were obtained from a small rotary mud drill program (18 holes for 1,790m) completed in late 2014 which affirmed the uranium potential of Energy Metals' Manyingee East prospect, located up-channel of Paladin's Manyingee Deposit (ASX release 27th October 2014).

During the year, a small geophysical survey program using the new passive seismic survey (PSS) technique was trialled at Manyingee with two 2.5 km traverses completed across the

buried Manyingee palaeochannel to record ambient seismic noise. The PSS trial was successful with interpretation of the seismic profiles allowing the depth to the channel base to be defined (Figure 10). In particular, the southern boundary of the Manyingee palaeochannel, unclear in previous EM conductivity imagery, has been located and a number of deep (>80 m depth) palaeochannel branches have been identified, so expanding the area prospective for mineralisation.

In view of the success of the trial passive seismic survey, it is considered desirable to extend the survey further to the south and east up-palaeoflow direction as well as to target potential buried palaeochannels in the southern part of the tenement which lack a strong EM signature. Energy Metals believes there is considerable scope for further discoveries and expansion of known mineralisation in the Manyingee palaeochannel.

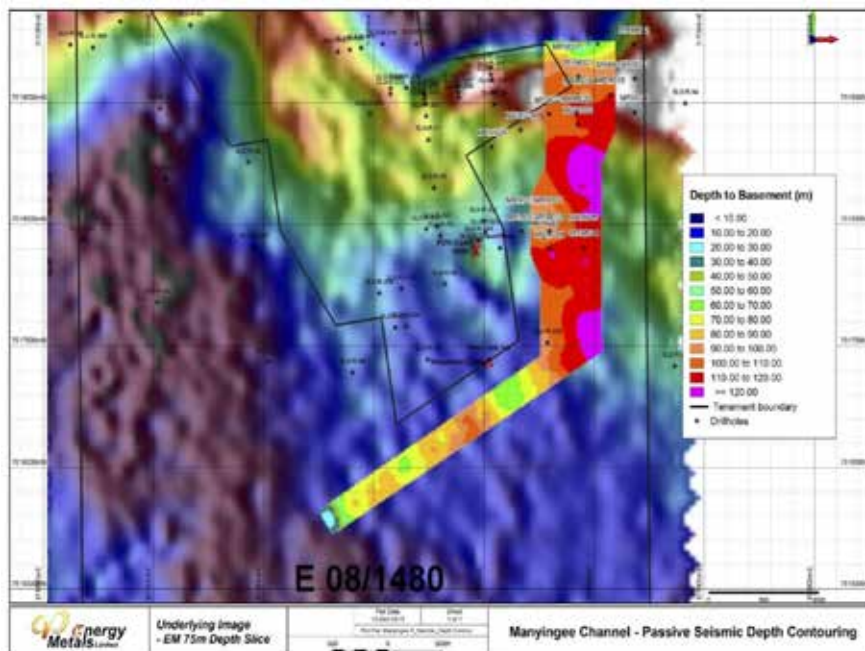


Figure 10: Manyingee passive seismic survey (PSS) depth contour image over EM conductivity 75m depth slice. The main N-S traverse identifies a series of deep channel branches whereas the NE-SW traverse displays a more undulating basement surface with at least two basement highs indicated by green and yellow colours. The PSS results provide superior definition of the palaeochannel architecture compared with EM conductivity imagery.

R E V I E W O F A C T I V I T I E S

Anketell (EME 100%)

The Anketell project, located 50 km west of Sandstone, comprises one retention licence R58/2. The project consists of shallow calcrete-style uranium mineralisation discovered by Western Mining (WMC) in 1972. Aircore drilling by Energy Metals in the period 2007 to 2009 confirmed the presence of uranium mineralisation in calcrete, opalised calcrete and calcareous clays with most traverses recording anomalous intercepts at shallow depths (typically within 10m of surface). In 2009, Energy Metals announced an initial JORC (2004) Inferred Mineral Resource of 2,720 tonnes (6Mlb) U₃O₈ at a grade of 167ppm (100ppm cut-off); refer to the ASX Announcement of 21 July 2009 for further details.

The Anketell project is not an economically viable mining proposition at the current uranium price. In 2014 Energy Metals elected to convert the original Anketell exploration licences into a retention licence to allow the Company to maintain tenure over the project area with minimal expenditure until such time as the economic viability of the project improves. Retention licence R58/2, which covers project resource areas, was granted in April 2015.

Lake Mason (EME 100%)

The Lake Mason project, located 25km NNE of Sandstone, comprises one retention licence R57/2. Previous exploration by BP Minerals in the 1970's discovered shallow carnotite mineralisation in calcretised sediments associated with the Lake Mason drainage system. In 2010, Energy Metals announced a JORC (2004) resource at Lake Mason of 9.1Mt @ 185ppm U₃O₈ (at 100ppm cut-off grade) for 1,689 tonnes (3.7Mlb) of uranium, with 62% of the resource reporting to the Indicated Category (refer to the ASX announcement of 17 December 2010 for further details).

The Lake Mason project is not currently an economically viable mining proposition. In 2014 Energy Metals elected to convert the original Lake Mason exploration licence into a retention licence to allow the Company to maintain tenure over the project area with minimal expenditure until such time as the economic viability of the project improves. Retention licence R57/2, which covers project resource areas, was granted in April 2015.

Lakeside (EME 100%)

The Lakeside project, located 20 km west of Cue, comprises one retention licence R21/1. Previous exploration resulted in discovery of shallow-level carnotite mineralisation mainly hosted at depths of 1-5 metres within a palaeo-drainage system on the northwest margin of Lake Austin. Various drilling campaigns were undertaken by Energy Metals in the period 2007-2012 and mineralisation in three separate palaeochannels was identified. In 2014, Energy Metals announced a JORC (2012) Inferred resource at Lakeside of 960 tonnes U₃O₈ at 200ppm cut-off grade. Further details are provided in the ASX Announcement of 3 June 2014.

The Lakeside project is not an economically viable mining proposition under current conditions. In 2014 Energy Metals elected to convert the original Lakeside exploration licence into a retention licence to allow the Company to maintain tenure over the project area with minimal expenditure until such time as the economic viability of the project improves. Retention licence R21/1, which covers project resource areas, was granted in December 2015.

REVIEW OF ACTIVITIES

Mopoke Well (EME 100%)

The Mopoke Well project, located 55km west of Leonora, comprises one retention licence R29/1. The tenement contains two historic uranium prospects (Peninsula and Stakeyard Well), with the uranium hosted by calcretised sediments associated with the Lake Raeside drainage system. In 2013 a maiden JORC (2004) resource estimate was undertaken for Peninsula using the results from drilling undertaken by Energy Metals. The inferred JORC resource estimate totalled 9.75Mt at 165ppm eU_3O_8 for 1,613 tonnes or 3.56Mlb U_3O_8 at a cut-off grade of 100ppm U_3O_8 (refer to the ASX announcement of 12 March 2013 for further details).

The Mopoke Well project is not currently an economically viable mining proposition. In 2014 Energy Metals elected to convert the original Mopoke Well exploration licence into a retention licence to allow the Company to maintain tenure over the project area with minimal expenditure until such time as the economic viability of the project improves. Retention licence R29/1, which covers project resource areas, was granted in May 2015.

CORPORATE

On 26 May 2015 Ms Xuekun Li, Energy Metals' Company Secretary, was appointed the Chief Financial Officer following the resignation of Mr Xiaochua Song.

At 31 December 2015 Energy Metals held approximately \$21.8 million in cash and bank deposits, providing a solid resource for ongoing exploration and project development in the coming period.

About CGN

Established in September 1994, China General Nuclear Power Group (CGN) (formerly known as China Guangdong Nuclear Power Holding Co., Ltd) is a large clean energy corporation with current total assets of approximately RMB430.7 billion and net assets of RMB 129.6 billion. By the end of March 2016 CGN had 16 operating nuclear power stations with existing generation capacity of 17,090 MWe, and a further 12 nuclear projects currently under construction across various locations around China will add approximately 14,650 MWe of capacity. CGN is one of only two Chinese companies that has been granted the right to import and export uranium.

CGN has also invested in a portfolio of wind, solar energy and hydro power units. At present, CGN owns an installed capacity of 8,360 MWe from in-service wind power, a total capacity of 1,290 MWe from solar photovoltaic power, and an attributable capacity of 4,610 MWe and controlled capacity of 1,580 MWe from hydro power. Moreover, CGN has made great strides in distributed energy, nuclear technology application and energy conservation technical services. CGN aims to become the world's leading clean energy producer.



REVIEW OF ACTIVITIES

MINERAL RESOURCES GOVERNANCE STATEMENT

Energy Metals Ltd ensures that the Mineral Resource estimates for its Western Australia and Northern Territory projects are subject to appropriate levels of governance and internal controls. The mineral resource estimation procedures are well established and are subject to annual internal review by the Company and external review by the Company's professional resource estimation consultants. This review process has not identified any material issues or risks associated with the existing Mineral Resource estimates. The Company periodically reviews the governance framework in line with the expansion and development of its business.

Energy Metals Ltd reports its Mineral Resources on an annual basis in accordance with the Australasian Code for Reporting of Exploration Results, Mineral Resources and Ore Reserves (the JORC code) 2012 Edition.

The Competent Persons named by the Company are Members or Fellows of the Australia Institute of Mining and Metallurgy and/or the Australian Institute of Geoscientists and qualify and competent persons as defined in the JORC Code.

In accordance with listing rules 5.21.2 and 5.21.4, the tables below set out the Company's Mineral Resources for 2015.

MINERAL RESOURCE STATEMENT***Bigirlyi Deposit - Mineral Resource Estimate (JORC 2004) – as at 31 December 2015**

Deposit	Resource Category	Cut-off Grade	Tonnes (millions)	Grade U_3O_8 (ppm)	Grade V_2O_5 (ppm)	Contained U_3O_8 (tonnes)	Contained V_2O_5 (tonnes)	Contained U_3O_8 (Mlb)	Contained V_2O_5 (Mlb)
Bigirlyi	Indicated	500	4.65	1,366	1,303	6,360	6,060	14.0	13.4
Bigirlyi	Inferred	500	2.81	1,144	1,022	3,210	2,870	7.1	6.3
Bigirlyi	Total	500	7.46	1,283	1,197	9,570	8,930	21.1	19.7

There have been no changes in the mineral resources at the Bigirlyi Deposit from the previous financial year. Note that contained metal was originally reported in units of kilotonnes (thousands of tonnes) rounded to one significant figure. For consistency, contained metal is listed here in tonnes at the same level of accuracy as originally reported.

Bigirlyi Satellite Deposits - Mineral Resource Estimate (JORC 2012) – as at 31 December 2015

Deposit	Resource Category	Cut-off Grade	Tonnes (millions)	Grade eU_3O_8 (ppm)	Contained U_3O_8 (tonnes)	Contained U_3O_8 (Mlb)
Anomaly15 East	Inferred	100	0.14	1,320	187	0.41
Bigwest	Inferred	100	0.41	362	147	0.32

There have been no changes in the mineral resources at the Bigirlyi Satellite Deposits from the previous financial year.

REVIEW OF ACTIVITIES

Walbiri Deposit - Mineral Resource Estimate (JORC 2012) – as at 31 December 2015

Deposit	Resource Category	Cut-off Grade	Tonnes	Grade U ₃ O ₈	Contained U ₃ O ₈	Contained U ₃ O ₈
			(millions)	(ppm)	(tonnes)	(Mlb)
Walbiri	Inferred	200	10.98	641	7,037	15.5

The mineral resources at the Walbiri Deposit is a maiden resource announced in October 2015.

Walbiri Satellite Deposits - Mineral Resource Estimate (JORC 2012) – as at 31 December 2015

Deposit	Resource Category	Cut-off Grade	Tonnes	Grade eU ₃ O ₈	Contained U ₃ O ₈	Contained U ₃ O ₈
			(millions)	(ppm)	(tonnes)	(Mlb)
Hill One	Inferred	200	0.49	321	159	0.35
Sundberg	Inferred	200	1.01	259	260	0.57

The mineral resources at the Walbiri Satellite Deposits are maiden resources announced in October 2015.

Camel Flat Deposit - Mineral Resource Estimate (JORC 2012) – as at 31 December 2015

Deposit	Resource Category	Cut-off Grade	Tonnes	Grade U ₃ O ₈	Contained U ₃ O ₈	Contained U ₃ O ₈
			(millions)	(ppm)	(tonnes)	(Mlb)
Camel Flat	Inferred	100	0.21	1,384	292	0.64

There have been no changes in the mineral resources at the Camel Flat Deposit from the previous financial year.

Cappers Deposit - Mineral Resource Estimate (JORC 2004) – as at 31 December 2015

Deposit	Resource Category	Cut-off Grade	Tonnes	Grade U ₃ O ₈	Contained U ₃ O ₈	Contained U ₃ O ₈
			(millions)	(ppm)	(tonnes)	(Mlb)
Cappers	Inferred	100	22.0	145	3,200	7.0

There have been no changes in the mineral resources at the Cappers Deposit from the previous financial year.

Karins Deposit - Mineral Resource Estimate (JORC 2012) – as at 31 December 2015

Deposit	Resource Category	Cut-off Grade	Tonnes	Grade U ₃ O ₈	Contained U ₃ O ₈	Contained U ₃ O ₈
			(millions)	(ppm)	(tonnes)	(Mlb)
Karins	Inferred	200	1.24	556	691	1.52

The mineral resources at the Karins Deposit is a maiden resource announced in July 2015.

REVIEW OF ACTIVITIES

Lakeside Deposit - Mineral Resource Estimate (JORC 2012) – as at 31 December 2015

Deposit	Resource Category	Cut-off Grade	Tonnes	Grade U ₃ O ₈	Contained U ₃ O ₈	Contained U ₃ O ₈
			(millions)	(ppm)	(tonnes)	(Mlb)
Lakeside	Inferred	200	2.74	350	960	2.12

There have been no changes in the mineral resources at the Peninsula Deposit from the previous financial year.

Peninsula Deposit - Mineral Resource Estimate (JORC 2004) – as at 31 December 2015

Deposit	Resource Category	Cut-off Grade	Tonnes	Grade eU ₃ O ₈	Contained U ₃ O ₈	Contained U ₃ O ₈
			(millions)	(ppm)	(tonnes)	(Mlb)
Peninsula	Inferred	100	9.75	165	1,613	3.56

There have been no changes in the mineral resources at the Peninsula Deposit from the previous financial year.

Anketell Deposit - Mineral Resource Estimate (JORC 2004) – as at 31 December 2015

Deposit	Resource Category	Cut-off Grade	Tonnes	Grade eU ₃ O ₈	Contained U ₃ O ₈	Contained U ₃ O ₈
			(millions)	(ppm)	(tonnes)	(Mlb)
Anketell	Inferred	100	16.3	167	2,720	6.0

There have been no changes in the mineral resources at the Anketell Deposit from the previous financial year.

Lake Mason Deposit - Mineral Resource Estimate (JORC 2004) – as at 31 December 2015

Deposit	Resource Category	Cut-off Grade	Tonnes	Grade U ₃ O ₈	Contained U ₃ O ₈	Contained U ₃ O ₈
			(millions)	(ppm)	(tonnes)	(Mlb)
Lake Mason	Indicated	100	5.1	204	1,049	2.3
Lake Mason	Inferred	100	4.0	160	640	1.4
Lake Mason	Total	100	9.1	185	1,689	3.7

There have been no changes in the mineral resources at the Lake Mason Deposit from the previous financial year.

*Totals may not sum exactly or may not convert exactly between alternative units due to rounding.

REVIEW OF ACTIVITIES

Note:

The information in this report relating to mineral resource estimates at Bigryi and Anketell is based on information compiled by Arnold van der Heyden BSc, who is a Member of The Australasian Institute of Mining and Metallurgy (MAusIMM). Mr van der Heyden has more than five years relevant experience in estimation of mineral resources and the mineral commodity uranium. Mr van der Heyden is a full time employee of Helman & Schofield and takes responsibility for the resource estimation. Mr van der Heyden has sufficient experience relevant to the assessment of this style of mineralisation to qualify as a Competent Person as defined in the "Australasian Code for Reporting of Exploration Results, Mineral Resources and Ore Reserves –The JORC Code (2004)". Mr van der Heyden consents to the inclusion in the report of the matters based on his information in the form and context in which it appears.

The information in this report that relates mineral resource estimation for Lake Mason is based on work completed by Mr Jonathon Abbott who is a full time employee of Hellman and Schofield Pty Ltd and a member of the Australasian Institute of Mining and Metallurgy. Mr Abbott has sufficient experience which is relevant to the style of mineralisation and type of deposit under consideration and to the activity which he is undertaking to qualify as a Competent Person as defined in the 2004 Edition of the 'Australasian Code for Reporting of Exploration Results, Mineral Resources and Ore Reserves'. Mr Abbott consents to the inclusion in the report of the matters based on his information in the form and context in which it appears.

The information in this report that relates mineral resource estimation for the Peninsula (Mopoke Well) Lakeside, Camel Flat, Anomaly 15 East and Bigwest Deposits is based on work completed by Mr Dmitry Pertel who is a full time employee of CSA Global Ltd and a member of the Australasian Institute of Mining and Metallurgy. Mr Pertel has sufficient experience which is relevant to the style of mineralisation and type of deposit under consideration and to the activity which he is undertaking to qualify as a Competent Person as defined in the 2004 and 2012 Editions of the 'Australasian Code for Reporting of Exploration Results, Mineral Resources and Ore Reserves'. Mr Pertel consents to the inclusion in the report of the matters based on his information in the form and context in which it appears.

The information in this report that relates mineral resource estimation for the Karins, Walbiri, Sundberg and Hill One Deposits is based on work completed by Mr Dmitry Pertel and Dr Maxim Seredkin who are full time employees of CSA Global Ltd and are a member and fellow, respectively, of the Australasian Institute of Mining and Metallurgy. Mr Pertel and Dr Seredkin have sufficient experience which is relevant to the style of mineralisation and type of deposit under consideration and to the activity which he is undertaking to qualify as a Competent Person as defined in the 2012 Edition of the 'Australasian Code for Reporting of Exploration Results, Mineral Resources and Ore Reserves'. Mr Pertel and Dr Seredkin consent to the inclusion in the report of the matters based on his information in the form and context in which it appears.

Information in this report relating to exploration results, data and cut-off grades is based on information compiled by Dr Wayne Taylor, MAIG. Dr Taylor is a full time employee of Energy Metals. Dr Taylor has sufficient experience which is relevant to the style of mineralisation and type of deposit under consideration and to the activity being undertaken to qualify as a Competent Person as defined in the "Australasian Code for Reporting of Exploration Results, Mineral Resources and Ore Reserves –The JORC Code (2012)". Dr Taylor consents to the inclusion of the information in the report in the form and context in which it appears.

REVIEW OF ACTIVITIES

Each of the above named consents to the inclusion of the information in the report in the form and context in which it appears. The Mineral Resource estimates for Anketell, Lake Mason and Peninsula Deposits were originally compiled and announced utilising parameters from the 2004 JORC Australian Code for Reporting of Exploration Results, Mineral Resources and Ore Reserves. This information was prepared and first disclosed under the JORC Code 2004. It has not been updated since to comply with the JORC Code 2012 on the basis that the information has not materially changed since it was last reported.

Uranium mineralisation grades throughout this report may be annotated with a sub-prefix 'e' because they have been reported as uranium equivalent grades derived from down-hole gamma ray logging results and should be regarded as approximations only. Gamma logging or "total count gamma logging" (the method used by Energy Metals) is a common method used to estimate uranium grade where the radiation contribution from thorium and potassium is very small as in most sandstone and calcrete hosted deposits. Gamma logging does not account for the signal derived from thorium and potassium, nor does it account for possible parent-daughter disequilibrium in the uranium-series decay chain, thus the result is expressed as an equivalent value or eU_3O_8 .

Energy Metals uses downhole gamma probes which were initially calibrated at PIRSA (now DEWNR), South Australia test pits and then subjected to annual recalibration to ensure the integrity of measurements.



DIRECTORS' REPORT

The Directors present their report on the consolidated entity (referred to hereafter as the Group) consisting of Energy Metals Limited and the entity it controlled at the end or during the year ended 31 December 2015.

DIRECTORS

The following persons were directors of Energy Metals Limited during the whole of the financial year (or as disclosed) and up to the date of this report:

He, Zuyuan (Non-executive Chairman)
 Xing, Jianhua (Non-executive Director, alternate director of He, Zuyuan)
 Xiang, Weidong (Managing Director)
 Lindsay George Dudfield (Non-executive Director)
 Geoffrey Michael Jones (Non-executive Director)
 Zhong, Yu (Non-executive Director)
 Zhang, Zimin (Non-executive Director)

PRINCIPAL ACTIVITIES

During the year the principal continuing activity of the Group was uranium exploration.

DIVIDENDS

No dividends have been paid or declared and no dividends have been recommended by the Directors.

REVIEW OF OPERATIONS

Exploration

Northern Territory

The Company continued various exploration targeting work on its tenements in the Ngalia Basin, with four key target areas identified. A work program of reprocessing and compilation of historical data was performed on uranium deposits and prospects located in the Ngalia Basin.

Walbiri Deposit – Located 50km east of Bigirlyi, Walbiri was discovered in 1972 by Central Pacific Minerals (CPM) Ltd and explored until 1976. A review of historical exploration data allowed a maiden JORC resource of 7,037t U₃O₈ at 641ppm (200ppm cut-off grade) to be estimated (refer October 2015 ASX release).

Walbiri Satellite Deposits – The Sundberg and Hill One deposits are located immediately west and east of Walbiri, respectively. A review of historical exploration data allowed estimation of maiden JORC resources of 260t U₃O₈ at 259ppm for Sundberg and 159t U₃O₈ at 321ppm for Hill One, both at 200ppm cut-off grade (refer October 2015 ASX release).

Bigirlyi Joint Venture

On 1 July 2015, after reprocessing and compiling the historical data, the Company announced a maiden JORC (2012) mineral resource estimate of 691 tonnes eU₃O₈ (200 ppm cut-off) for the historical Karins uranium deposit.

DIRECTORS' REPORT

A trial lead isotope study was commissioned to detect shallowly buried uranium with soil radiogenic lead on the Bigrlyi Project. The Company completed site rehabilitation works at Anomaly-15 and received a significant environmental bond refund.

Western Australia

The Company successfully completed a passive seismic survey to detect the base of the Manyingee palaeochannel.

Uranium Trading

During the year, the Company did not conduct any uranium trading activities.

Full details of the Company's operations during the year are included within the Review of Activities section of the Annual Report.

OPERATING RESULTS FOR THE YEAR

The consolidated loss of the Group for the year ended 31 December 2015 was \$1,025,258 (31 December 2014: loss of \$552,074).

REVIEW OF FINANCIAL CONDITIONS

The net assets of the Group were \$54,576,147 at 31 December 2015 (2014: \$55,601,405).

Use of cash and assets by the Company for the year ended 31 December 2015 was consistent with the Company's business objectives since listing on the Australian Securities Exchange on 9 September 2005.

CHANGES IN STATE OF AFFAIRS

There was no significant change in the state of affairs of the consolidated entity during the financial year.

MATTERS SUBSEQUENT TO THE END OF THE FINANCIAL YEAR

There has been no matter or circumstance which has arisen since 31 December 2015 that has significantly affected, or may significantly affect:

- (a) the Group's operations in future financial years, or
- (b) the results of those operations in future financial years, or
- (c) the Group's state of affairs in future financial years.

LIKELY DEVELOPMENTS AND EXPECTED RESULTS OF OPERATIONS

While the Company reduced its spending on the BJV project and some tenements, exploration activities continued to be carried out in the Ngalia region and tenements in Western Australia. The Company will increase its exploration expenditure on the tenements when considered to be appropriate.

The Directors are not aware of any developments that might have a significant effect on the operations of the Group in subsequent financial years that are not already disclosed in this report.

DIRECTORS' REPORT

ENVIRONMENTAL REGULATION

The Company is subject to significant environmental regulation in respect of its exploration activities. Tenements in the Northern Territory and Western Australia are granted subject to adherence to environmental conditions with strict controls on clearing, including a prohibition on the use of mechanized equipment or development without the approval of the relevant government agencies and with rehabilitation required on completion of exploration activities.

Energy Metals Limited conducts its exploration activities in an environmentally sensitive manner and the Company is not aware of any breach of statutory environmental conditions or obligations.

The Directors have considered compliance with the National Greenhouse and Energy Reporting Act 2007 which requires entities to report annual greenhouse gas emissions and energy use. For the measurement year 1 January 2015 to 31 December 2015 the Directors have assessed that there is no current reporting required, but there may be a requirement in the future.

DIRECTORS' REPORT

INFORMATION ON DIRECTORS

Name	Director's Experience	Special Responsibilities
Mr He, Zuyuan	<p>Mr He holds a Bachelor degree in Geology and an MBA from Tsinghua University in China and has over 25 years' experience in uranium exploration and financial management. Mr He was previously the Chief Financial Officer and Vice President of Nanjing Zhong Da Group for a period of 3 years.</p> <p>He is currently a director of the following affiliate Companies: Beijing Sino-Kaz Uranium Investment Company Limited and Semizbay-U LLP. Mr He was an Executive Director of Extract Resources Ltd (currently known as Extract Resources Pty Limited) from March 2012 to January 2013.</p>	Non-Executive Chairman
Dr Xiang, Weidong	<p>Dr Xiang is a qualified geologist and has 20 years' experience in geology and uranium exploration. Dr Xiang holds a Doctor degree of Exploration and Prospecting for Mineral Resources. He worked for CNNC Beijing Research Institution of Uranium Geology for approximately twelve years before he joined CGNPC-Uranium Resources Co. Ltd, a subsidiary of China General Nuclear Power Corporation (formerly known as China Guangdong Nuclear Power Holding Co. Ltd.), as a senior executive. Dr Xiang is a member of Nuclear Geology and Mineral Committee, China Mining Association. Dr Xiang is a member of the AusIMM. Dr Xiang does not currently hold directorships of other Australian public companies.</p>	Managing Director
Mr Lindsay Dudfield BSc	<p>Mr Dudfield is a qualified geologist with over 30 years' experience exploring for gold and base metals in Australia and overseas, including close involvement with a number of greenfields discoveries. Member of the AusIMM, SEG, AIG and GSA. He is currently the Managing Director of Jindalee Resources Ltd.</p> <p>Other public company directorships held by Mr Dudfield over the last three years are: Jindalee Resources Limited – current; Alchemy Resources Limited, from November 2011 to current, Extract Resources Ltd (currently known as Extract Resources Pty Ltd), from March 2012 to June 2012.</p>	Non-executive Director

DIRECTORS' REPORT

Name	Director's Experience	Special Responsibilities
Mr Geoff Jones BEng FIEAust CPEng	<p>Mr Jones is a Fellow of the Institution of Engineers, Australia, with a Bachelor of Engineering (Civil) degree. He has over 25 years' experience covering the areas of construction, engineering, mineral processing and project development. Mr Jones has been responsible for the preparation of feasibility studies for gold and base metals projects and has completed numerous project evaluations and due diligence reviews and has managed the successful development of projects both domestically and overseas.</p> <p>Mr Jones has operated his own project management and engineering consultancy, JMG Projects Pty Ltd, servicing the mining industry. In this capacity Mr Jones has completed works on gold and base metal projects for Australian and overseas based mining groups. Mr Jones is currently the Managing Director of GR Engineering Services Limited.</p> <p>Other public company directorships held by Mr Jones over the last three years are: GR Engineering Services Limited - (June 2013 to current); Marindi Metals Limited (formerly known as Brumby Resources Ltd) – (February 2006 to current); and Azumah Resources Limited – (October 2009 to current).</p>	Non-Executive Director
Mr Zhong, Yu	Mr Zhong has over 30 years' experience in engineering and specialises in research and development of new engineering technology. Mr Zhong has a Master degree of Management and does not currently hold directorships of other public Australian companies.	Non-executive Director
Mr Xing, Jianhua	Mr Xing is a qualified accountant with over 20 years' experience in accounting and finance, especially in the industry of exploration and mining. He holds a Master degree from Wuhan University of Technology and has worked as a senior manager for China General Nuclear Power Group since 2006. He is currently the Chief Finance Officer of CGNPC-Uranium Resources Co. Ltd.	Non-executive Director (alternate director of Mr He, Zuyuan)
Mr Zhang, Zimin	Mr Zhang is a senior engineer with over 25 years' experience in the uranium industry. He holds a Master degree from Beijing Research Institute of Uranium Geology and has worked as a senior manager for China General Nuclear Power Group since 2008. He is currently the Chief Engineer of the Department of Overseas Business Development of CGNPC-Uranium Resources Co. Ltd.	Non-executive Director

DIRECTORS' REPORT

DIRECTORS' INTERESTS IN THE SHARES AND OPTIONS OF THE COMPANY

The particulars of Directors' interest in shares and options are as at the date of this report.

	Ordinary Shares	Options
He, Zuyuan	-	-
Xiang, Weidong	-	-
Lindsay G Dudfield	3,255,165	-
Geoff M Jones	-	-
Zhong, Yu*	26,553,722	-
Xing, Jianhua	-	-
Zhang, Zimin	-	-

*: shares indirectly held through KangDe Investment Group. Mr Zhong controls KangDe Investment Group by holding more than 50% holding.

MEETINGS OF DIRECTORS

The following table sets out the number of meetings of the Company's Directors held during the year ended 31 December 2015 and the numbers of meetings attended by each Director.

	Number Held Whilst in Office	Number Attended
He, Zuyuan	2	1
Xiang, Weidong	2	2
Lindsay G Dudfield	2	2
Geoff M Jones	2	1
Zhong, Yu	2	1
Xing, Jianhua	2	2
Zhang, Zimi	2	2

As at the date of this report, the Group did not have an Audit Committee. The Board considers that due to the Group's size, an audit committee's functions and responsibilities can be adequately and efficiently discharged by the Board as a whole, operating in accordance with the Group's mechanisms designed to ensure independent judgement in decision making.

DIRECTORS' SHAREHOLDING

	Fully Paid Ordinary Shares	Options
He, Zuyuan	-	-
Xiang, Weidong	-	-
Lindsay G Dudfield*	3,255,165	-
Geoff M Jones	-	-
Zhong, Yu**	26,553,722	-
Xing, Jianhua	-	-
Zhang, Zimin	-	-

*: Including shares held by the director directly and indirectly.

** : Shares indirectly held through KangDe Investment Group.

DIRECTORS' REPORT

Retirement, election and continuation in office of directors

Mr He, Zuyuan and Mr Lindsay Dudfield are the directors retiring by rotation who, being eligible, may offer themselves for re-election at Annual General Meeting.

COMPANY SECRETARY INFORMATION

Ms Li, Xuekun, ACCA, ACIS, was appointed the Company Secretary on 15 June 2010. Ms Li has completed a Bachelor of Management. She has nearly 20 years' experience in finance and corporate governance.

REMUNERATION REPORT (AUDITED)

This remuneration report, which forms part of the directors' report, sets out information about the remuneration of the Company's key management personnel for the financial year ended 31 December 2015. The term 'key management personnel' refers to those persons having authority and responsibility for planning, directing and controlling the activities of the consolidated entity, directly or indirectly, including any director (whether executive or otherwise) of the consolidated entity. The prescribed details for each person covered by this report are detailed below under the following headings:

- remuneration policy
- key management personnel emoluments
- service agreements
- options granted as part of remuneration
- share-based compensation
- securities policy
- Key Management Personnel ("KMP")

H. Zuyuan	Non-Executive Chairman
L. Dudfield	Non-Executive Director
G. Jones	Non-Executive Director
Z. Yu	Non-Executive Director
X. Jianhua	Non-Executive Director
Z. Zimin	Non-Executive Director
X. Weidong	Managing Director
L. Xuekun	Company Secretary and CFO
S. Xiaohua	CFO (resigned on 25 May 2015)

DIRECTORS' REPORT

Remuneration Policy

The remuneration policy of the Group has been designed to align directors' objectives with shareholders and business objectives. The Board of Energy Metals Limited believes the remuneration policy to be appropriate and effective in its ability to attract and retain the best executives and directors to run and manage the Group, as well as create goal congruence between directors, executives and shareholders. The Board's policy for determining the nature and amount of remuneration for Board members of the Company is as follows:

All executives receive either consulting fees or a salary, part of which may be taken as superannuation, and from time to time, options. Options issued to directors are subject to approval by Shareholders. The Board reviews executive packages annually by reference to the executive's performance and comparable information from industry sectors and other listed companies in similar industries. An Employee Share Option Plan was adopted by the Group following approval by shareholders at the Group's Annual General Meeting held on 24th November 2006.

Board members are allocated superannuation guarantee contributions as required by law, and do not receive any other retirement benefits. From time to time, some individuals may choose to sacrifice their salary or consulting fees to increase payments towards superannuation. All remuneration paid to directors and specified executives is valued at the cost to the Company and expensed. Options are valued using the Black-Scholes methodology.

The Board's policy is to remunerate non-executive directors at commercial market rates for comparable companies for their time, commitment and responsibilities. Independent external advice is sought when required. The maximum aggregate amount of fees that can be paid to non-executive directors is subject to approval by shareholders at the Annual General Meeting and is currently set at \$200,000 per annum. Fees for non-executive directors are not linked to the performance of the Group. Non-executive directors' remuneration may also include an incentive portion consisting of options, subject to approval by Shareholders.

The policy, setting the terms and conditions for the executive directors and specified executives, was developed and approved by the Board and is considered appropriate for the current exploration phase of the Group's development. Emoluments of Directors are set by reference to payments made by other companies of similar size and industry, and by reference to the skills and experience of Directors. Fees paid to directors are not linked to the performance of the Group. This policy may change once the exploration phase is complete. At present the existing remuneration policy is not impacted by the Group's performance including earnings and changes in shareholder wealth (dividends, changes in share price or returns of capital to shareholders).

The following table shows the share price and the market capitalisation of the Company at the end of each period in the past four financial years. No dividends have been paid during the year.

	At 31 December 2011	At 31 December 2012	At 31 December 2013	At 31 December 2014	At 31 December 2015
Share Price	\$0.31	\$0.25	\$0.24	\$0.13	\$0.065
Market Capitalisation	\$46.7M	\$37.7M	\$36.9M	\$27.3M	\$13.6M
Dividend	-	-	-	-	-

DIRECTORS' REPORT

Directors and Executives (Key Management Personnel) Emoluments

The Group's policy for determining the nature and amount of emoluments of key management personnel is that Directors are to be paid by salaries or consulting fees at commercial rates for professional services performed.

Details of the nature and amount of each element of the emoluments of each director of Energy Metals Limited are set out in the following tables.

		Short-term benefits		Post-employment	Share-based payment		% remuneration consisting
		Directors Fees	Cash Salary, Consulting Fees	Super-annuation	Options	Total	of options
Non-Executive Directors		\$	\$	\$	\$	\$	%
H. Zuyuan	2015	-	-	-	-	-	-
	2014	-	-	-	-	-	-
L. Dudfield	2015	-	24,000	-	-	24,000	-
	2014	-	26,450	-	-	26,450	-
G. Jones	2015	22,831	-	2,169	-	25,000	-
	2014	22,857	-	2,143	-	25,000	-
Zhong. Yu	2015	25,000	-	-	-	25,000	-
	2014	25,000	-	-	-	25,000	-
Xing. Jianhua	2015	-	-	-	-	-	-
	2014	-	-	-	-	-	-
Zhang. Zimin	2015	-	-	-	-	-	-
	2014	-	-	-	-	-	-
Executive Directors							
Xiang. Weidong	2015	200,000	-	-	-	200,000	-
	2014	200,000	-	-	-	200,000	-
Key Management							
Song. Xiaohua	2015	70,047	-	-	-	70,047	-
	2014	155,000	-	-	-	155,000	-
Li. Xuekun	2015	-	65,310	-	-	65,310	-
	2014	-	34,676	-	-	34,676	-
Total	2015	317,878	89,310	2,169	-	409,357	-
	2014	402,857	61,126	2,143	-	466,126	-

Service Agreements

On appointment to the Board, all non-executive directors enter into a service agreement with the Company in the form of a letter of appointment. The letter summarises the Board policies and terms of appointment, including compensation relevant to the office of director. Remuneration and other terms of employment for the Executive Director and other senior management are also formalised in service agreements as summarised below.

D I R E C T O R S ' R E P O R T

He, Zuyuan

On 23 December 2009 the Company entered into an agreement (via a letter of appointment), appointing Mr He, Zuyuan as a Non-Executive Chairman. Mr He is entitled to a director's fees of \$25,000 (2014: \$25,000) per annum. According to a consent letter dated on 22 November 2013, Mr He, Zuyuan agreed to forgive his remuneration from 1 April 2013 to 31 December 2014 as his service as a director had been considered and compensated by other related corporate bodies. The agreement was extended to 31 December 2015.

Xiang Weidong

Dr Xiang was appointed a director on 8 December 2010 pursuant to the terms and conditions of his employment contract with the Company. Dr Xiang has been the Managing Director since 1 January 2011. His salary is \$200,000 per annum (2014: \$200,000 per annum). The agreement may be terminated by either party on 1 month's written notice.

Lindsay Dudfield

Mr Dudfield, as a Non-executive Director, is contracted via a Consultancy Agreement between the Company and Jopan Management Pty Ltd trading as Western Geological Services. The Company pays Western Geological Services at a rate of \$750/day (2014: \$750/day) in return for Mr Dudfield's services. The agreement may be terminated by either party on 1 month's written notice.

Zhong, Yu

On 8 December 2010, the Company entered into an agreement (via a letter of appointment), appointing Mr Zhong, Yu as a Non-Executive Director. Mr Zhong is entitled to a director's fees of \$25,000 (2014: \$25,000) per annum.

Geoff Jones

On 29 August 2008, the Company entered into an agreement (via a letter of appointment), appointing Mr Geoff Jones as a Non-Executive Director. Mr Jones is entitled to a director's fees of \$25,000 (2014: \$25,000) per annum.

Xing, Jianhua

Mr Xing was appointed a Non-executive director on 30 June 2014. According to a letter of appointment, Mr Xing, Jianhua is entitled to a director's fee of \$25,000 per annum. Mr Xing consented to forgive his remuneration from 1 July 2014 to 31 December 2014 as his service had been considered and compensated by other related corporate bodies. The agreement was extended to 31 December 2015.

Zhang, Zimin

Mr Zhang was appointed a Non-Executive director on 30 June 2014. According to a letter of appointment, Mr Zhang, Zimin is entitled to a director's fee of \$25,000 per annum. Mr Zhang consented to forgive his remuneration from 1 July 2014 to 31 December 2014 as his service had been considered and compensated by other related corporate bodies. The agreement was extended to 31 December 2015.

Li, Xuekun

Ms Li is the Company Secretary of Energy Metals Limited and has been the Chief Finance Officer since Mr Song, Xiaohua resigned. She provides her service via L.X.K. Consulting. On 25 May 2015, the Company entered into a Professional Service Agreement with Ms. Li and pays a rate of \$105/hour in return for her professional services. The agreement expires at 31 December 2016 and may be terminated by a party if the other party commits a breach of the agreement and the breach is not corrected within 30 days.

DIRECTORS' REPORT

Options granted as part of remuneration

Options over shares in Energy Metals Limited are granted under the Energy Metals Employee Share Option Plan. Participation in the plan and any vesting criteria, are at the Board's discretion and no individual has a contractual right to participate in the plan or to receive any guaranteed benefits. Any options issued to directors of the Company are subject to shareholder approval and are not linked to Company financial performance. There were no options issued during the year to any of the KMP.

Share-based compensation

No shares in the Company were provided as remuneration to directors of Energy Metals Limited and senior managers of the Company during the year (2014: Nil). No options were vested during the year (2014: Nil).

Securities Policy

The Company has implemented a policy on trading in the Company's securities designed to ensure that all directors, senior management and employees of the Company act ethically and do not use confidential inside information for personal gain. The policy states acceptable and unacceptable times for trading in Company securities and outlines the responsibility of directors, senior management and employees to ensure that trading complies with the Corporations Act 2001, the Australian Securities Exchange (ASX) Listing Rules and Company Policy.

Any transaction conducted by Directors with regards to shares of the Company requires notification to the ASX. Each Director has entered into an agreement to provide any such information with regards to Company dealings directly to the Company Secretary promptly to allow the Company to notify the ASX within the required reporting timeframes.

Shares provided on exercise of options

No ordinary shares in the Company were provided as a result of the exercise of remuneration options to directors of Energy Metals Limited and senior managers of the Company during the year (2014: Nil).

End of Remuneration Report (Audited).

SHARES UNDER OPTION

At 31 December 2015, there were no shares under option (2014: Nil).

SHARES ISSUED ON EXERCISE OF OPTIONS

There were no shares issued on exercise of options during the financial year and up to the date of this report.

DIRECTORS AND OFFICERS INSURANCE

The Company has paid a premium to insure the directors and officers of the Company for the period 30/06/2015 to 30/06/2016 against those liabilities for which insurance is permitted under section 199B of the Corporations Act 2001. Details of the nature of the liabilities insured for and the amount of the premium are subject to a confidentiality clause under the contract of insurance.

DIRECTORS' REPORT

PROCEEDINGS ON BEHALF OF THE COMPANY

No person has applied to the Court under section 237 of the Corporations Act 2001 for leave to bring proceedings on behalf of the Company, or to intervene in any proceedings to which the Company is a party, for the purpose of taking responsibility on behalf of the Company for all or part of those proceedings.

No proceedings have been brought or intervened in on behalf of the Company with leave of the Court under section 237 of the Corporations Act 2001.

AUDITOR'S INDEPENDENCE DECLARATION

A copy of the auditor's independence declaration as required by section 307C of the Corporations Act 2001 is included on page 64 of this report.

NON-AUDIT SERVICES

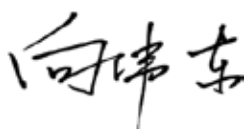
Details of amounts paid or payable to the auditor for non-audit services provided during the year by the auditor are outlined in note 22 to the financial statements.

The directors are satisfied that the provision of non-audit services, during the year, by the auditor (or by another person or firm on the auditor's behalf) is compatible with the general standard of independence for auditors imposed by the Corporations Act 2001.

The directors are of the opinion that the services as disclosed in note 22 to the financial statements do not compromise the external auditor's independence, based on advice received from the Board of Directors, for the following reasons:

- all non-audit services have been reviewed and approved to ensure that they do not impact the integrity and objectivity of the auditor; and
- none of the services undermine the general principles relating to auditor independence as set out in APES 110 'Code of Ethics for Professional Accountants' issued by the Accounting Professional & Ethical Standards Board, including reviewing or auditing the auditor's own work, acting in a management or decision-making capacity for the company, acting as advocate for the company or jointly sharing economic risks and rewards.

11 March 2016, at Perth, Western Australia



XIANG, WEIDONG
Managing Director

C O N T E N T S

	Page
Financial Statements	
Consolidated Statement of Profit or Loss and Other Comprehensive Income	33
Consolidated Statement of Financial Position	34
Consolidated Statement of Changes in Equity	35
Consolidated Statement of Cash flows	36
Notes to the Consolidated Financial Statements	37
Directors' Declaration	63
Auditors' Independence Declaration	64
Independent Auditors' Report to the Members	65

These financial statements cover the consolidated financial statements for the controlled entity consisting of Energy Metals Limited and its subsidiary and its joint venture. The financial statements are presented in the Australian currency.

Energy Metals Limited is a company limited by shares, incorporated and domiciled in Australia. Its registered office and principal place of business is:

Energy Metals Limited
Level 2, 28 Kings Park Road
West Perth WA 6005

A description of the nature of the consolidated entity's operations and its principal activities is included in the review of operations and activities in the directors' report on pages 2 to 19 are not part of these financial statements.

The financial statements were authorised for issue by the directors on 11 March 2016. The directors have the power to amend and reissue the financial statements.

Through the use of the internet, we have ensured that our corporate reporting is timely and complete. All press releases, financial reports and other information are available at our Investor Information on our website: www.energymetals.net

CONSOLIDATED STATEMENT OF PROFIT OR LOSS AND OTHER COMPREHENSIVE INCOME FOR THE YEAR ENDED 31 DECEMBER 2015

	Notes	Year ended 31 December 2015 \$	Year ended 31 December 2014 \$
Other revenue	3a	707,123	929,844
Depreciation expense	3b	(87,855)	(108,054)
Exploration expense		(512,018)	-
Receivable written off		-	(43,625)
Employee benefits expense	3c	(549,994)	(590,265)
Corporate and regulatory expenses		(38,844)	(39,052)
Office rental		(216,977)	(207,201)
Legal advisory expense		(536)	(14,973)
Other administrative expense		(326,157)	(478,748)
Loss before income tax		(1,025,258)	(552,074)
Income tax expense	4	-	-
Loss for the year		(1,025,258)	(552,074)
Total comprehensive expense for the year		(1,025,258)	(552,074)
Loss attributable to owners of Energy Metals Limited		(1,025,258)	(552,074)
Total comprehensive expense attributable to owners of Energy Metals Limited		(1,025,258)	(552,074)
Loss per share attributable to the ordinary equity holders of the Company:			
Basic loss per share (cents per share)	6	(0.49)	(0.27)
Diluted earnings per share (cents per share)	6	NA	NA

The above Consolidated Statement of Profit or Loss and Other Comprehensive Income should be read in conjunction with the accompanying notes.

CONSOLIDATED STATEMENT OF FINANCIAL POSITION AS AT 31 DECEMBER 2015

	Notes	31 December 2015 \$	31 December 2014 \$
CURRENT ASSETS			
Cash and cash equivalents	8	190,491	11,609,364
Term deposits	8	21,571,236	11,307,540
Trade and other receivables	9	264,241	232,579
Total Current Assets		22,025,968	23,149,483
NON-CURRENT ASSETS			
Receivables	9	-	143,910
Plant and equipment	10	319,542	405,783
Exploration and evaluation expenditure	11	32,656,336	32,127,774
Total Non-Current Assets		32,975,878	32,677,467
TOTAL ASSETS		55,001,846	55,826,950
CURRENT LIABILITIES			
Trade and other payables	12	343,547	132,234
Provisions	13	82,152	93,311
Total Current Liabilities		425,699	225,545
TOTAL LIABILITIES		425,699	225,545
NET ASSETS		54,576,147	55,601,405
EQUITY			
Contributed equity	14	59,051,644	59,051,644
Accumulated losses		(4,475,497)	(3,450,239)
Capital and reserves attributable to owners of Energy Metals Limited		54,576,147	55,601,405
TOTAL EQUITY		54,576,147	55,601,405

The above Consolidated Statement of Financial Position should be read in conjunction with the accompanying notes.

CONSOLIDATED STATEMENT OF CHANGES IN EQUITY FOR THE YEAR ENDED 31 DECEMBER 2015

	Attributable to owners of Energy Metals Limited		
	Contributed equity \$	Accumulated losses \$	Total \$
Balance at 1 January 2014	49,677,832	(2,898,165)	46,779,667
Total comprehensive expense for the year	-	(552,074)	(552,074)
Issue of capital	9,373,812	-	9,373,812
Balance at 31 December 2014	59,051,644	(3,450,239)	55,601,405
Total comprehensive expense for the year	-	(1,025,258)	(1,025,258)
Balance at 31 December 2015	59,051,644	(4,475,497)	54,576,147

The above Consolidated Statement of Changes in Equity should be read in conjunction with the accompany notes.

CONSOLIDATED STATEMENT OF CASHFLOWS FOR THE YEAR ENDED 31 DECEMBER 2015

	Notes	Year ended 31 December 2015 \$ Inflows (Outflows)	Year ended 31 December 2014 \$ Inflows (Outflows)
Cash flows from operating activities			
Payments to suppliers and employees		(1,317,271)	(1,209,807)
Payments for exploration operation		(137,017)	-
Income received from Joint Venture		14,289	17,128
Interest received		809,189	831,637
Grant and rebate received		1,921	30,029
Net cash used in operating activities	5	(628,889)	(331,013)
Cash flows from investing activities			
Payments for exploration, evaluation and development expenditure		(1,106,710)	(2,347,262)
Payments for property, plant and equipment		(1,615)	(40,670)
Acquisition of term deposits		(20,989,199)	(14,828,162)
Withdrawal of term deposits		11,088,477	15,169,748
Receipt of environmental guarantee bond		219,063	41,823
Net cash used in investing activities		(10,789,984)	(2,004,523)
Cash flows from financing activity			
Return of share application fund		-	(24,011)
Net cash used in financing activity		-	(24,011)
Net decrease in cash and cash equivalents		(11,418,873)	(2,359,547)
Cash and cash equivalents at the beginning of the year		11,609,364	13,968,911
Cash and cash equivalents at the end of the year	5	190,491	11,609,364

The above Consolidated Statement of Cash flows should be read in conjunction with the accompanying notes.

NOTES TO THE CONSOLIDATED FINANCIAL STATEMENTS FOR THE YEAR ENDED 31 DECEMBER 2015

1. SUMMARY OF SIGNIFICANT ACCOUNTING POLICIES

The principal accounting policies adopted in the preparation of these consolidated financial statements are set out below. These policies have been consistently applied to all the years presented.

(a) Statement of Compliance

These financial statements are general purpose financial statements which have been prepared in accordance with the Corporations Act 2001, Accounting Standards and Interpretations, and comply with other requirements of the law.

The financial statements comprise the consolidated financial statements of the Group. For the purposes of preparing the consolidated financial statements, the Company is a for-profit entity. Accounting Standards include Australian Accounting Standards. Compliance with Australian Accounting Standards ensures that the financial statements and notes of the company and the Group comply with International Financial Reporting Standards ("IFRS"). The financial statements were authorised for issue by the directors on 11 March 2016.

Basis of Preparation

These financial statements have been prepared under the historical cost convention.

Critical Accounting Estimates

The preparation of financial statements requires the use of certain critical accounting estimates. It also requires management to exercise its judgement in the process of applying the Group's accounting policies. The areas involving a higher degree of judgement or complexity, or areas where assumptions and estimates are significant to the financial statements, are disclosed in note 1(s).

Removal of Parent

Separate financial statements for Energy Metals Limited, as an individual entity, are no longer presented as a consequence of a change to the *Corporations Act 2001*. Financial information for Energy Metals Limited as an individual entity is included in note 24.

(b) Principles of Consolidation

(i) Subsidiaries

The consolidated financial statements incorporate the financial statements of the Company and entities (including structured entities) controlled by the Company and its subsidiaries. Control is achieved when the Company:

- has power over the investee;
- is exposed, or has rights, to variable returns from its involvement with the investee; and
- has the ability to use its power to affect its returns.

The Company reassesses whether or not it controls an investee if facts and circumstances indicate that there are changes to one or more of the three elements of control listed above.

NOTES TO THE CONSOLIDATED FINANCIAL STATEMENTS FOR THE YEAR ENDED 31 DECEMBER 2015

1. SUMMARY OF SIGNIFICANT ACCOUNTING POLICIES (CONTINUED)

When the Company has less than a majority of the voting rights of an investee, it has power over the investee when the voting rights are sufficient to give it the practical ability to direct the relevant activities of the investee unilaterally. The Company considers all relevant facts and circumstances in assessing whether or not the Company's voting rights in an investee are sufficient to give it power, including:

- the size of the Company's holding of voting rights relative to the size and dispersion of holdings of the other vote holders;
- potential voting rights held by the Company, other vote holders or other parties;
- rights arising from other contractual arrangements; and
- any additional facts and circumstances that indicate that the Company has, or does not have, the current ability to direct the relevant activities at the time that decisions need to be made, including voting patterns at previous shareholders' meeting.

(ii) Joint Operation

The Company has an interest in a joint arrangement that is a jointly controlled operation. A joint arrangement is a contractual arrangement whereby two or more parties undertake an economic activity that is subject to joint control. The Company recognises its interest in the joint operation by recognising the assets that it controls and the liabilities that it incurs. The Company also recognises the expenses that it incurs and its share of the income that it earns from the sale of goods or services by the joint operation. Details of the joint operation are set out in note 23.

(c) Segment Reporting

Operating segments are reported in a manner consistent with the internal reporting provided to the Board. The Board is responsible for allocating resources and assessing performance of the operating segments.

(d) Revenue Recognition

Revenue is measured at the fair value of the consideration received or receivable.

The Group recognises revenue when the amount of revenue can be reliably measured, it is probable that future economic benefits will flow to the entity and specific criteria have been met for each of the Group's activities as described below.

Revenue is recognised for the major business activities as follows:

NOTES TO THE CONSOLIDATED FINANCIAL STATEMENTS FOR THE YEAR ENDED 31 DECEMBER 2015

1. SUMMARY OF SIGNIFICANT ACCOUNTING POLICIES (CONTINUED)

(i) *Management Fee*

Management fee from joint venture activities is measured at fair value of the consideration received or receivable. Amounts disclosed as revenue are net of returns, allowances, rebates and amounts collected on behalf of third parties.

(ii) *Interest Income*

Interest revenue is recognised on a proportional basis taking into account the interest rates applicable to the financial assets.

(e) *Income Tax*

The income tax expense or revenue for the period is the tax payable on the current period's taxable income based on the applicable income tax rate for each jurisdiction adjusted by changes in deferred tax assets and liabilities attributable to temporary differences and to unused tax losses.

The current income tax charge is calculated on the basis of the tax laws enacted or substantively enacted at the end of the reporting period in the countries where the Company's subsidiary operates and generates taxable income. Management periodically evaluates positions taken in tax returns with respect to situations in which applicable tax regulation is subject to interpretation. It establishes provisions where appropriate on the basis of amounts expected to be paid to the tax authorities.

Deferred income tax is provided in full, using the liability method, on temporary differences arising between the tax bases of assets and liabilities and their carrying amounts in the consolidated financial statements. However, the deferred income tax is not accounted for if it arises from initial recognition of an asset or liability in a transaction other than a business combination that at the time of the transaction affects neither accounting nor taxable profit nor loss. Deferred income tax is determined using tax rates (and laws) that have been enacted or substantially enacted by the end of the reporting period and are expected to apply when the related deferred income tax asset is realised or the deferred income tax liability is settled.

Deferred tax assets are recognised for deductible temporary differences and unused tax losses only if it is probable that future taxable amounts will be available to utilise those temporary differences and losses.

Deferred tax liabilities and assets are not recognised for temporary differences between the carrying amount and tax bases of investments in controlled entities where the parent entity is able to control the timing of the reversal of the temporary differences and it is probable that the differences will not reverse in the foreseeable future.

Deferred tax assets and liabilities are offset when there is a legally enforceable right to offset current tax assets and liabilities and when the deferred tax balances relate to the same taxation authority. Current tax assets and tax liabilities are offset where the entity has a legally enforceable right to offset and intends either to settle on a net basis, or to realise the asset and settle the liability simultaneously.

NOTES TO THE CONSOLIDATED FINANCIAL STATEMENTS FOR THE YEAR ENDED 31 DECEMBER 2015

1. SUMMARY OF SIGNIFICANT ACCOUNTING POLICIES (CONTINUED)

Current and deferred tax is recognised in profit or loss, except to the extent that it relates to items recognised in other comprehensive income or directly in equity. In this case, the tax is also recognised in other comprehensive income or directly in equity, respectively.

(f) Leases

Leases in which a significant portion of the risks and rewards of ownership are not transferred to the Group as lessee are classified as operating leases. Payments made under operating leases (net of any incentives received from the lessor) are charged to profit or loss on a straight-line basis over the period of the lease.

(g) Impairment of Assets

Assets are tested for impairment whenever events or changes in circumstances indicate that the carrying amount may not be recoverable. An impairment loss is recognised for the amount by which the asset's carrying amount exceeds its recoverable amount. The recoverable amount is the higher of an asset's fair value less costs to sell and value in use. For the purposes of assessing impairment, assets are grouped at the lowest levels of which there are separately identifiable cash inflows which are largely independent of the cash inflows from other assets or groups of assets (cash-generating units). Non-financial assets that suffered an impairment are reviewed for possible reversal of the impairment at the end of each reporting period.

(h) Cash and Cash Equivalents

For the purposes of the consolidated statement of cash flows, cash and cash equivalents include cash on hand, and deposits held at call with financial institutions, other short-term, highly liquid investments with original maturities of three months or less that are readily convertible to known amounts of cash and which are subject to an insignificant risk of changes in value.

(i) Trade and Other Receivables

Receivables are recognised initially at fair value and subsequently measured at amortised cost using the effective interest method, less provision for impairment. Receivables are generally due for settlement within 30 days.

Collectability of receivables is reviewed on an ongoing basis. Debts which are known to be uncollectible are written off by reducing the carrying amount directly. An allowance account (provision for impairment of receivables) is used when there is objective evidence that the Group will not be able to collect all amounts due according to the original terms of the receivables. Significant financial difficulties of the debtor, probability that the debtor will enter bankruptcy or financial reorganisation, and default or delinquency in payments (more than 30 days overdue) are considered indicators that the receivable is impaired. The amount of the impairment allowance is the difference between the asset's carrying amount and the present value of estimated future cash flows, discounted at the original effective interest rate. Cash flows relating to short-term receivables are not discounted if the effect of discounting is immaterial.

NOTES TO THE CONSOLIDATED FINANCIAL STATEMENTS FOR THE YEAR ENDED 31 DECEMBER 2015

1. SUMMARY OF SIGNIFICANT ACCOUNTING POLICIES (CONTINUED)

The amount of the impairment loss is recognised in the consolidated profit or loss and other comprehensive income. When a receivable for which an impairment allowance had been recognised becomes uncollectible in a subsequent period, it is written off against the allowance account. Subsequent recoveries of amounts previously written off are credited against other expenses in the profit or loss.

(j) Investments and Other Financial Assets

Classification

The Group classifies its financial assets in the following categories: loans and receivables and held-to-maturity investments. The classification depends on the purpose for which the investments were acquired. Management determines the classification of its investments at initial recognition and, in the case of assets classified as held-to-maturity, re-evaluates this designation at the end of each reporting period.

(i) Loans and Receivables

Loans and receivables are non-derivative financial assets with fixed or determinable payments that are not quoted in an active market. They are included in current assets, except for those with maturities greater than 12 months after the reporting period which are classified as non-current assets. Loans and receivables are included in trade and other receivables (note 9) and in the consolidated statement of financial position.

(ii) Held-to maturity Investments

Held-to-maturity investments are non-derivative financial assets with fixed or determinable payments and fixed maturities that the Group's management has the positive intention and ability to hold to maturity. If the Group were to sell other than an insignificant amount of held-to-maturity financial assets are included in non-current assets, except for those with maturities less than 12 months from the end of the reporting period, which are classified as current assets.

Recognition and Derecognition

Regular purchases and sales of financial assets are recognised on trade-date – the date on which the Group commits to purchase or sell the asset. Investments are initially recognised at fair value plus transaction costs for all financial assets not carried at fair value through profit or loss. Financial assets carried at fair value through profit or loss are initially recognised at fair value and transaction costs are expensed in profit or loss. Financial assets are derecognised when the rights to receive cash flows from the financial assets have expired or have been transferred and the Group has transferred substantially all the risks and rewards of ownership.

Subsequent Measurement

Loans and receivables and held-to-maturity investments are carried at amortised cost using the effective interest method.

NOTES TO THE CONSOLIDATED FINANCIAL STATEMENTS FOR THE YEAR ENDED 31 DECEMBER 2015

1. SUMMARY OF SIGNIFICANT ACCOUNTING POLICIES (CONTINUED)

Impairment

The Group assesses at the end of each reporting period whether there is objective evidence that a financial asset or Group of financial assets is impaired. If there is evidence of impairment for any of the Group's financial assets carried at amortised cost, the loss is measured as the difference between the asset's carrying amount and the present value of estimated future cash flows, excluding future credit losses that have not been incurred. The cash flows are discounted at the financial asset's original effective interest rate. The loss is recognised in profit or loss.

(k) Plant and Equipment

Plant and equipment is stated at historical cost less depreciation. Historical cost includes expenditure that is directly attributable to the acquisition of the items.

Subsequent costs are included in the asset's carrying amount or recognised as a separate asset, as appropriate, only when it is probable that future economic benefits associated with the item will flow to the Group and the cost of the item can be measured reliably. The carrying amount of any component accounted for as a separate asset is derecognised when replaced. All other repairs and maintenance are charged to profit or loss during the reporting period in which they are incurred.

Depreciation is calculated using the diminishing value and prime cost methods and is brought to account over the estimated economic lives of all property, plant and equipment. The rates used are based on the useful life of the assets and range from 10% to 40%.

The assets' residual values and useful lives are reviewed, and adjusted if appropriate, at the end of each reporting period.

An asset's carrying amount is written down immediately to its recoverable amount if the asset's carrying amount is greater than its estimated recoverable amount.

Gains and losses on disposals are determined by comparing proceeds with carrying amount. These are included in profit or loss.

(l) Exploration and Evaluation Expenditure

The Group's policy with respect to exploration and evaluation expenditure is to use the area of interest method. Under this method exploration and evaluation expenditure is carried forward on the following basis:

- i) Each area of interest is considered separately when deciding whether, and to what extent, to carry forward or write off exploration and evaluation costs.
- ii) Exploration and evaluation expenditure related to an area of interest is carried forward provided that rights to tenure of the area of interest are current and that one of the following conditions is met:
 - such evaluation costs are expected to be recouped through successful development and exploitation of the area of interest or alternatively, by its sale; or

NOTES TO THE CONSOLIDATED FINANCIAL STATEMENTS FOR THE YEAR ENDED 31 DECEMBER 2015

1. SUMMARY OF SIGNIFICANT ACCOUNTING POLICIES (CONTINUED)

- exploration and/or evaluation activities in the area of interest have not yet reached a stage which permits a reasonable assessment of the existence or otherwise of economically recoverable reserves and active and significant operations in relation to the area are continuing.

Exploration and evaluation costs accumulated in respect of each particular area of interest include only net direct expenditure.

The application of the Group's policy in regards to the recognition and measurement of capitalised exploration and evaluation expenditure requires management to make certain assumptions as to future events and circumstances. Any such estimates and assumptions may change as new information becomes available. The Group reviews the carrying value of exploration and evaluation expenditure at each reporting date. This requires judgement as to the status of the individual projects and their future economic value. The factors impacting on economic value include the size of the total available resource, the grade of the resource, expected costs of developing the project, technical feasibility of the project, expected costs of mining production and future commodity prices.

If, after having capitalised exploration and evaluation expenditure, the area of interest is disposed or surrendered or management concludes that the capitalised expenditure is unlikely to be recovered by future sale or successful development and exploitation of the area, then the relevant capitalised amount will be written off through the Consolidated Profit or Loss and Other Comprehensive Income. Expenditure that is not deemed fit for capitalisation is costed directly through the Consolidated Profit or Loss and Other Comprehensive Income.

(m) Trade and Other Payables

These amounts represent liabilities for goods and services provided to the Group prior to the end of financial year which are unpaid. The amounts are unsecured and are usually paid within 30 days of recognition.

(n) Employee Benefits

(i) Short-term and Long-term Employee Benefits

A liability is recognised for benefits accruing to employees in respect of wages and salaries, annual leave and sick leave in the period the related service is rendered.

Liabilities recognised in respect of short-term employee benefits, are measured at their nominal values using the remuneration rate expected to apply at the time of settlement.

Liabilities recognised in respect of long term employee benefits are measured as the present value of the estimated future cash outflows to be made by the Group in respect of services provided by employees up to reporting date.

NOTES TO THE CONSOLIDATED FINANCIAL STATEMENTS FOR THE YEAR ENDED 31 DECEMBER 2015

1. SUMMARY OF SIGNIFICANT ACCOUNTING POLICIES (CONTINUED)

(ii) *Share-based Payments*

Share-based compensation benefits are provided to employees via the Energy Metals Limited Employee Option Plan.

The fair value of options granted under the Energy Metals Limited Employee Option Plan is recognised as an employee benefits expense with a corresponding increase in equity. The total amount to be expensed is determined by reference to the fair value of the options granted, which includes any market performance conditions but excludes the impact of any service and non-market performance vesting conditions and the impact of any non-vesting conditions.

Non-market vesting conditions are included in assumptions about the number of options that are expected to vest. The total expense is recognised over the vesting period, which is the period over which all of the specified vesting conditions are to be satisfied. At the end of each period, the entity revises its estimates of the number of options that are expected to vest based on the non-marketing vesting conditions. It recognises the impact of the revision to original estimates, if any, in profit or loss, with a corresponding adjustment to equity.

(o) *Contributed Equity*

Ordinary shares are classified as equity.

Incremental costs directly attributable to the issue of new shares or options are shown in equity as a deduction, net of tax, from the proceeds.

(p) *Earnings Per Share*

(i) *Basic Earnings Per Share*

Basic earnings per share is determined by dividing:

- the profit attributable to owners of the Company, excluding any costs of servicing equity other than ordinary shares
- By the weighted average number of ordinary shares outstanding during the financial year.

(ii) *Diluted Earnings Per Share*

Diluted earnings per share adjusts the figures used in the determination of basic earnings per share to take into account:

- the after income tax effect of interest and other financing costs associated with dilutive potential ordinary shares, and
- the weighted average number of additional ordinary shares that would have been outstanding assuming the conversion of all dilutive potential ordinary shares.

NOTES TO THE CONSOLIDATED FINANCIAL STATEMENTS FOR THE YEAR ENDED 31 DECEMBER 2015

1. SUMMARY OF SIGNIFICANT ACCOUNTING POLICIES (CONTINUED)

(q) Goods and Services Tax (GST)

Revenues, expenses and assets are recognised net of the amount of associated GST, unless the GST incurred is not recoverable from the taxation authority. In this case it is recognised as part of the cost of acquisition of the asset or as part of the expense.

Receivables and payables are stated inclusive of the amount of GST receivable or payable. The net amount of GST recoverable from, or payable to, the taxation authority is included with other receivables or payables in the statement of financial position.

Cash flows are presented on a gross basis. The GST components of cash flows arising from investing or financing activities which are recoverable from, or payable to the taxation authority, are presented as operating cash flows.

(r) New Accounting Standards and Interpretations

There were no new accounting standards and interpretations issued, that were effective for the financial year beginning 1 January 2015.

Standards and Interpretations in issue not yet adopted

At the date of authorisation of the consolidated financial statements, the Standards and Interpretations listed below were in issue but not yet effective. The potential effect of the revised Standards/Interpretations on the Group's financial statements has not yet been determined.

AASB 9 "Financial Instruments" and the relevant amending standards, effective for annual reporting periods beginning on or after 1 January 2018;

AASB 1056 'Superannuation Entities', effective for annual reporting periods beginning on or after 1 January 2018;

AASB 2014-3 "Amendments to Australian Accounting Standards – Accounting for Acquisitions of Interests in Joint Operation", effective for annual reporting periods beginning on or after 1 January 2016;

AASB 2014-4 "Amendments to Australian Accounting Standards – Clarification of Acceptable Methods of Depreciation and Amortisation", effective for annual reporting periods beginning on or after 1 January 2016;

AASB 15 'Revenue from Contracts with Customers', AASB 2014-5 'Amendments to Australian Accounting Standards arising from

AASB 15' and AASB 2015-8 'Amendments to Australian Accounting Standards – Effective Date of AASB 15', effective for annual reporting periods beginning on or after 1 January 2016;

AASB 2014-6 'Amendments to Australian Accounting Standards – Agriculture: Bearer Plants', effective for annual reporting periods beginning on or after 1 January 2016;

NOTES TO THE CONSOLIDATED FINANCIAL STATEMENTS FOR THE YEAR ENDED 31 DECEMBER 2015

1. SUMMARY OF SIGNIFICANT ACCOUNTING POLICIES (CONTINUED)

AASB 2014-9 'Amendments to Australian Accounting Standards – Equity Method in Separate Financial Statements', effective for annual reporting period beginning on or after 1 January 2016';

AASB 2014-10 "Amendments to Australian Accounting Standards – Sale or Contribution of Assets between an Investor and its Associate or Joint Venture ", effective for annual reporting periods beginning on or after 1 January 2016;

AASB 2015-1 "Amendments to Australian Accounting Standards – Annual Improvements to Australian Accounting Standards 2012–2014 Cycle", effective for annual reporting periods beginning on or after 1 January 2016.

(s) Critical Accounting Estimates and Judgements

Estimates and judgments are continually evaluated and are based on historical experience and other factors, including expectations of future events that may have a financial impact on the entity and that are believed to be reasonable under the circumstances.

Accounting for capitalised exploration and evaluation expenditure

The Group has capitalised significant exploration and evaluation expenditure on the basis either that it is expected to be recouped through future successful development or alternatively sale of the Areas of Interest. If ultimately the area of interest is abandoned or is not successfully commercialised, the carrying value of the capitalised exploration and evaluation expenditure would be written down to its recoverable amount.

Factors that could impact the future recoverability include the level of reserves and resources, future technological changes, cost of drilling and production, production rates and changes to commodity prices. As at 31 December 2015 the carrying value of capitalised exploration and evaluation expenditure is \$32,656,336 (2014: \$32,127,774).

NOTES TO THE CONSOLIDATED FINANCIAL STATEMENTS FOR THE YEAR ENDED 31 DECEMBER 2015

2. SEGMENT INFORMATION

(a) DESCRIPTION OF SEGMENTS

Information reported to the chief operating decision maker for the purposes of resource allocation and assessment of segment performance focuses on three reportable segments of its business, being exploration, trading and corporate segments.

(b) SEGMENT REVENUE AND RESULTS

	Consolidated			
	SEGMENT REVENUE		SEGMENT RESULT	
	2015	2014	2015	2014
CONTINUING OPERATIONS	\$	\$	\$	\$
Uranium exploration	14,289	46,855	(552,003)	(51,030)
Uranium trading	-	-	-	(43,625)
Corporate	692,834	882,989		
	707,123	929,844	(1,025,258)	(552,074)

Segment revenue of uranium exploration represents revenue generated from service provided to Bigrlyi Joint Operation while segment revenue of uranium trading generated from services provided to China Uranium Development Company Limited or its affiliates. There were no inter-segment sales in the current year (2014: nil).

The accounting policies of the reportable segments are the same as the Group's accounting policies described in note 1. Segment result represents the profit/(loss) before tax earned by each segment. This is the measure reported to the chief operating decision maker for the purposes of resource allocation and assessment of segment performance.

(c) SEGMENT ASSETS AND LIABILITIES

SEGMENT ASSETS	Consolidated	
	31 December 2015	31 December 2014
	\$	\$
Uranium exploration	32,967,053	32,704,338
Uranium trading	-	366
Corporate	22,034,793	23,122,246
TOTAL ASSETS	55,001,846	55,826,950
TOTAL ASSETS INCLUDES ADDITIONS TO NON-CURRENT ASSETS	442,298	2,064,853
SEGMENT LIABILITIES		
Uranium exploration	(131,394)	(31,078)
Uranium trading	-	(12,000)
Corporate	(294,305)	(182,467)
TOTAL LIABILITIES	(425,699)	(225,545)

NOTES TO THE CONSOLIDATED FINANCIAL STATEMENTS FOR THE YEAR ENDED 31 DECEMBER 2015

2. SEGMENT INFORMATION (CONT'D)

(d) INFORMATION ABOUT MAJOR CUSTOMERS

The Group does not have any external revenue at this stage. The Group is not reliant on any of its major customers.

(e) URANIUM TRADING

The Group did not have any uranium trading during the year as no business opportunities had been identified..

3. REVENUES AND EXPENSES

	Consolidated	
	2015	2014
	\$	\$
(a) Other Revenue includes the following revenue items:		
Interest income	692,834	882,988
Management fee from Joint Operation	12,368	16,827
Fuel rebate	1,921	30,029
	<u>707,123</u>	<u>929,844</u>
(b) Loss includes the following specific expenses:		
Depreciation	<u>87,855</u>	<u>108,054</u>
(c) Employee benefit expenses:		
Wages & superannuation	484,205	513,888
- Including: Executive Director's fee	200,000	200,000
Non-executive Directors fees*	48,373	47,857
Others	17,416	28,520
	<u>549,994</u>	<u>590,265</u>

*The payment in exchange for Mr. Lindsay Dudfield's service was included in the Corporate and Regulatory Expense in the profit or loss accounts.

NOTES TO THE CONSOLIDATED FINANCIAL STATEMENTS FOR THE YEAR ENDED 31 DECEMBER 2015

4. TAXATION

The reconciliation between tax expense and the product of accounting loss before income tax multiplied by the Company's applicable income tax rate is as follows:

Loss before income tax	(1,025,258)	(552,074)
Income tax expense (benefit) @ 30%	(307,577)	(165,622)
Tax effect of amounts which are not deductible in calculating taxable income:		
Non-deductible expenses	128	1,394
Timing differences not recognised	(157,506)	(604,787)
Deferred tax assets relating to tax losses not recognised	519,987	966,191
Prior year true up	(55,032)	(197,179)
Income tax expenses/benefit reported in the income statement	-	-

The franking account balance at period end was \$nil (2014: \$nil).

Deferred tax assets and liabilities not recognised relate to the following:

Deferred tax assets

Tax losses	10,689,762	10,321,040
Non-refundable R&D tax offsets	1,386,721	1,248,545
Other temporary differences	29,057	27,993

Deferred tax liabilities

Exploration assets	(9,796,901)	(9,638,332)
Other temporary differences	(52,715)	(52,715)
Net deferred tax assets not recognised	2,255,925	1,906,531

Net deferred tax assets have not been brought to account as it is not probable within the immediate future that tax profits will be available against which deductible temporary differences and tax losses can be utilised.

The use of losses is dependent on the Company satisfying the required criteria within the Income Tax Assessment Act 1936 & 1997 at the time the losses are incurred and used. The provisions of the Acts may change or the business may alter (past the change of ownership) and as a result the Company's losses may be lost in the future.

Tax Consolidation

Energy Metals Limited and its 100% owned Australian resident subsidiary, NT Energy Pty Ltd have implemented the tax consolidation legislation.

NOTES TO THE CONSOLIDATED FINANCIAL STATEMENTS FOR THE YEAR ENDED 31 DECEMBER 2015

5. RECONCILIATION OF LOSS AFTER INCOME TAX TO NET CASH INFLOW FROM OPERATING ACTIVITIES

	Consolidated	
	2015 \$	2014 \$
Loss after income tax	(1,025,258)	(552,074)
Depreciation	87,855	108,054
Non-cash exploration expense	375,001	-
Receivable written off	-	43,625
Annual leave provision	(11,159)	11,724
Change in operating assets and liabilities during the financial period:		
(Increase)/Decrease in trade and other receivables	(31,662)	25,740
Increase in trade and other payables	113,351	31,918
Net cash outflow from operating activities	(491,872)	(331,013)
Reconciliation of cash balance comprises:		
Cash and cash equivalents*	190,491	11,609,364

*: Cash at bank earns interest at 2.50% - 3% (2014: 3.5 %). Cash on term deposit are denominated in A\$ with an average maturity of 90 - 180 days (2014: 80 days) and effective interest rates between 2. 5% and 3.1%.

There were no significant non-cash transactions during the year.

6. LOSS PER SHARE

The loss or earnings and weighted average number of ordinary shares used in the calculation of basic (loss)/earnings per share are as follows.

Reconciliation of loss used in calculation of loss per share:

Loss attributable to owners of the Company	(1,025,258)	(552,074)
	206,313,060	206,313,060

	2015 Number	2014 Number
Weighted average number of ordinary shares used as the denominator in calculating basic earnings per share.	206,313,060	206,313,060

NOTES TO THE CONSOLIDATED FINANCIAL STATEMENTS FOR THE YEAR ENDED 31 DECEMBER 2015

7. DIVIDENDS

There were no dividends paid or declared by the Company during the year.

8. CASH AND CASH EQUIVALENTS

	Consolidated	
	31 December 2015	31 December 2014
	\$	\$
Cash and cash equivalents	128,174	11,559,174
Share of Joint Operation cash	62,317	50,190
	190,491	11,609,364
Term deposits classified separate to cash on face of statement of Financial Position	21,571,236	11,307,540

As at 31 December 2015, the Company had approximately total \$21.6 million term deposits (2014: \$11.3 million) with maturities from 4 months to 6 months in various financial situations earning interest income at an average rate of 3.03% (2014: 3.5%).

The Company's exposure to interest rate risk is disclosed in Note 16.

9. TRADE AND OTHER RECEIVABLES

	Consolidated	
	31 December 2015	31 December 2014
	\$	\$
CURRENT		
GST receivable	17,791	54,394
Trade receivables	20,119	-
Other receivables	226,331	178,185
	264,241	232,579
NON- CURRENT		
Other receivables	-	143,910

Trade receivables are denominated in Australian dollars and are interest free. The settlement terms varies depending on business transactions. Other receivables are mainly interest receivables and receivables due from joint operations. Due to the short-term nature of receivables their carrying value is assumed to be their fair value. Non-current receivables as at 31 December 2014 mainly included environment security bond of \$143,910. No trade and other receivables, including current and non-current, are impaired.

Trade receivables disclosed above included amounts that are past due at the end of the reporting period for which the Group has not recognised an allowance for doubtful debts because there has not been a significant change in credit quality and the amounts were still considered recoverable.

NOTES TO THE CONSOLIDATED FINANCIAL STATEMENTS FOR THE YEAR ENDED 31 DECEMBER 2015

9. TRADE AND OTHER RECEIVABLES (CONT'D)

In determining the recoverability of a trade receivable, the Group considers any change in the credit quality of the trade receivable from the date credit was initially granted up to the end of the reporting period. The concentration of credit risk is moderate due to the fact that the trading transactions are limited and the balance of the trade receivable is mainly due from joint operations. Of the trade receivables balance at the end of the year, there is one (1) customer who represents more than 5% of the total balance of trade receivables.

10. NON-CURRENT ASSETS - PLANT AND EQUIPMENT

	Consolidated	
	31 December 2015 \$	31 December 2014 \$
Plant and equipment - at cost	893,269	891,655
Less accumulated depreciation	(638,071)	(568,538)
	<u>255,198</u>	<u>323,117</u>
Motor vehicle – at cost	200,806	200,806
Less accumulated depreciation	(136,462)	(118,140)
	<u>64,344</u>	<u>82,666</u>
Total	<u>319,542</u>	<u>405,783</u>

Reconciliation of the carrying amount of fixed assets:	Plant & equipment \$	Motor vehicle \$	Total \$
Carrying amounts at 1 January 2014	366,798	106,369	473,167
Additions	40,670	-	40,670
Depreciation expenses	(84,351)	(23,703)	(108,054)
Carrying amount at 31 December 2014	<u>323,117</u>	<u>82,666</u>	<u>405,783</u>
Carrying amount at 1 January 2015	323,117	82,666	405,783
Additions	1,615	-	1,615
Depreciation expenses	(69,534)	(18,322)	(87,856)
Carrying amount at 31 December 2015	<u>255,198</u>	<u>64,344</u>	<u>319,542</u>

NOTES TO THE CONSOLIDATED FINANCIAL STATEMENTS FOR THE YEAR ENDED 31 DECEMBER 2015

11. NON-CURRENT ASSETS – EXPLORATION AND EVALUATION EXPENDITURE

	Consolidated	
	31 December 2015 \$	31 December 2014 \$
Balance at beginning of the year	32,127,774	30,103,590
Additions of capitalised exploration expenditure	903,563	2,024,184
Written-off exploration expenditure	(375,001)	-
Balance at the end of the year	32,656,336	32,127,774

The balance carried forward represents projects in the exploration and evaluation phase. Ultimate recoupment of exploration expenditure carried forward is dependent on successful development and commercial exploitation, or alternatively, sale of respective areas.

The written-off exploration expenditure related to the tenements that the Group surrendered during the year.

Employee benefits expense capitalised during the year were:

Wages and superannuation	675,027	675,027
--------------------------	---------	---------

NOTES TO THE CONSOLIDATED FINANCIAL STATEMENTS FOR THE YEAR ENDED 31 DECEMBER 2015

12. CURRENT LIABILITIES - TRADE AND OTHER PAYABLES

	Consolidated	
	31 December 2015	31 December 2014
	\$	\$
Trade payables	230,405	117,348
Other payables	113,142	14,886
	343,547	132,234

Trade payables are unsecured and are usually paid within 30 – 60 days of recognition. The carrying amounts of trade and other payables are assumed to be the same as their fair values, due to their short-term nature.

13. PROVISIONS

	Consolidated	
	31 December 2015	31 December 2014
	\$	\$
Employee benefits	82,152	93,311

The provision relates to the Group's liability for employee's annual leave entitlements. Based on past experience, the Group expects all employees to take the full amount of accrued leave or require payment within the next 12 months. The carrying amounts of provisions are assumed to be the same as their fair values.

14. CONTRIBUTED EQUITY

The Company had 209,683,312 ordinary shares, fully paid at 31 December 2015 (31 December 2014: 209,683,312). No movement in contributed equity during the year.

	Consolidated	
	31 December 2015	31 December 2014
	\$	\$
Contributed equity	59,051,644	59,051,644
	Number of shares	\$
Balance at 1 January 2014	153,767,762	49,677,832
Issue of shares in 2014	55,915,550	9,373,812
Balance at 31 December 2014 and 31 December 2015	209,683,312	59,051,644

NOTES TO THE CONSOLIDATED FINANCIAL STATEMENTS
FOR THE YEAR ENDED 31 DECEMBER 2015

14. CONTRIBUTED EQUITY (CONT'D)

Ordinary Shares

Ordinary shares entitled the holder to participate in dividends and the proceeds on winding up of the Company in proportion to the number of and amounts paid on the shares held.

On a show of hands every holder of ordinary shares present at a meeting in person or by proxy, is entitled to one vote, and upon a poll each share is entitled to one vote.

Ordinary shares have no par value and the Company does not have a limited amount of authorised capital.

Options

Information relating to the Energy Metals Limited Employee Option Plan, including details of options issued, exercised and lapsed during the financial year and options outstanding at the end of the financial year, is set out in note 15.

Capital Risk Management

The Group's objectives when managing capital are to safeguard their ability to continue as a going concern, so that they can continue to provide returns for shareholders and benefits for other stakeholders and to maintain an optimal capital structure to reduce the cost of capital. In order to achieve this objective, the Group seeks to maintain a gearing ratio that balances risks and returns at an acceptable level and also to maintain a sufficient funding base to enable the Group to meet its working capital and strategic investment needs. In making decisions to adjust its capital structure to achieve these aims, either through new share issues, or the reduction of debt, the Group considers not only its short-term position but also its long-term operational and strategic objectives.

There have been no other significant changes to the Group's capital management objectives, policies and processes in the year nor has there been any change in what the Group considers to be its capital.

NOTES TO THE CONSOLIDATED FINANCIAL STATEMENTS FOR THE YEAR ENDED 31 DECEMBER 2015

15. SHARE BASED PAYMENT TRANSACTIONS

Share based payments transactions are recognised at fair value in accordance with AASB 2. The expense in the year was nil (2014: Nil).

Employee Option Plan

The establishment of the Energy Metals Employee Share Option Plan was approved by shareholders at the 2006 annual general meeting. The Employee Share Option Plan is designed to provide eligible employees, executive officers and directors of the Company an opportunity, in the form of Options to subscribe for Shares in the Company. An “eligible employee” is a person who is at the time of an offer under the plan, a full or part time employee or director of the Company or an associated body corporate of the Company. Any offer of options to Directors will be subject to shareholder approval.

Under the plan, the Board may offer to eligible persons the opportunity to subscribe for such number of Options in the Company as the Board may decide and on the terms set out in the rules of the plan. Options granted under the plan will be offered to participants in the plan on the basis of the Board’s view of the contribution of the eligible person to the Company. When exercisable, each option is convertible into one ordinary share. Options granted under the plan carry no dividend or voting rights.

No options were granted or exercised during the year ended 31 December 2015. (2014: nil)

There are no options on issue as at 31 December 2015 under the Employee Share Option Plan.

16. FINANCIAL RISK MANAGEMENT

The Group’s activities expose it to a variety of financial risks: market risk (including currency risk and interest rate risk), credit risk and liquidity risk. The Group’s overall risk management program focuses on the unpredictability of financial markets and seeks to minimise potential adverse effects on the financial performance of the Group. The Group does not use any derivative financial instruments to hedge risk exposures. The Group uses different methods to measure different types of risk to which it is exposed. These methods include sensitivity analysis in the case of interest rate and other price risks, and aging analysis for credit risk.

Risk management is carried out by the Board as a whole.

NOTES TO THE CONSOLIDATED FINANCIAL STATEMENTS FOR THE YEAR ENDED 31 DECEMBER 2015

16. FINANCIAL RISK MANAGEMENT (CONT'D)

The Group holds the following financial instruments:

	Consolidated	
	31 December 2015	31 December 2014
	\$	\$
Financial Assets - Current		
Cash and cash equivalents	190,491	11,609,364
Term deposits	21,571,236	11,307,540
Trade and other receivables	264,241	232,579
	<u>22,025,968</u>	<u>23,149,483</u>
Financial Liabilities - Current		
Trade and other payables	<u>343,547</u>	<u>143,910</u>

(a) Market Risk

(I) Foreign Exchange Risk

The Group does not have significant foreign currency holding. No financial instruments have been entered into to manage this risk.

(II) Price Risk

The Group is in the stage of a junior explorer and the price of commodity does not constitute a significant risk to the business. The Group may adjust its strategy on the progress of its projects to adapt to the change of the market environment.

(III) Cash flow and fair value interest rate risk

The Group's exposure to interest rate risk arises from assets and liabilities bearing variable interest rates. The weighted average interest rate on cash holdings and term deposits was 3.03% at 31 December 2015 (31 December 2014: 3.5%). All other financial assets and liabilities are non interest bearing.

(IV) Group Sensitivity

At 31 December 2015, if interest rates had increased by 70 or decreased by 100 basis points from the period end rates with all other variables held constant, post-tax profit for the period would have been \$156,000 higher/\$223,000 lower (31 December 2014 –: \$160,000 higher/\$229,000 lower), mainly as a result of higher/lower interest income from cash and time deposits.

(b) Credit Risk

Credit risk arises from cash and deposits with banks and financial institutions, as well as outstanding receivables. The Group invests its surplus funds mainly with Australian banking financial institutions, namely National Australia Bank, Westpac Banking Corporation and Bank of China Limited Australia. All these banks have an A rating or above with Standard & Poors. The maximum credit risk of the Company was the exposure of its term deposits and trade and other receivables.

NOTES TO THE CONSOLIDATED FINANCIAL STATEMENTS FOR THE YEAR ENDED 31 DECEMBER 2015

16. FINANCIAL RISK MANAGEMENT (CONT'D)

(c) Liquidity Risk

Prudent liquidity risk management implies maintaining sufficient cash and marketable securities and the availability of funding through the equity market to meet obligations when due. At the end of the reporting period the Group held deposits of \$21.6 million (2014: \$22.9 million) with maturities from 1 month to 5 months that are expected to readily generate cash inflows for managing liquidity risk and also fulfill the commitments disclosed in Note 18.

(d) Fair Value Measurements

The net fair value of the Group's financial assets and liabilities approximates their carrying value.

17. CONTINGENCIES

Contingent Liabilities

Claims of Native Title

To date the Company has been notified by the Native Title Tribunal of native title claims which cover some of the Company's licence holdings. Until further information arises in relation to the claims and its likelihood of success, the Company is unable to assess the likely effect, if any, of the claims.

18. COMMITMENTS

The Company is required to maintain current rights of tenure to tenements, which require outlays of expenditure in 2016. Under certain circumstances these commitments are subject to the possibility of adjustment to the amount and/or timing of such obligations, however, they are expected to be fulfilled in the normal course of operations. Estimated expenditure on mining, exploration and prospecting leases for 2016.

	Consolidated	
	31 December 2015 \$	31 December 2014 \$
Tenement Expenditure Commitments:	1,070,746	1,879,357

NOTES TO THE CONSOLIDATED FINANCIAL STATEMENTS FOR THE YEAR ENDED 31 DECEMBER 2015

18. COMMITMENTS (CONT'D)

Capital Commitments

There are no capital expenditure commitments for the Group as at 31 December 2015.

Lease Commitments: Group as lessee

Commitments for minimum lease payments in relation to non-cancellable operating leases are payable as follows:

	Consolidated	
	31 December 2015	31 December 2014
	\$	\$
Within one year	35,345	121,180
Later than one year but not later than five years	-	35,345
	<u>35,345</u>	<u>156,525</u>

19. KEY MANAGEMENT PERSONNEL

Key Management Personnel are persons having authority and responsibility for planning, directing and controlling the activities of the Company. The aggregate compensation made to directors of the Company and the Group is set out below:

	Consolidated	
	31 December 2015	31 December 2014
	\$	\$
Short-term benefits	407,188	463,983
Post-employment benefits	2,169	2,143
	<u>409,357</u>	<u>466,126</u>

Detailed remuneration disclosures are provided in the remuneration report on pages 26 to 30.

NOTES TO THE CONSOLIDATED FINANCIAL STATEMENTS FOR THE YEAR ENDED 31 DECEMBER 2015

20. CONTROLLED ENTITIES

Controlled Entities	% held		Class	State of Incorporation	Date of Incorporation	Investment at Cost	
	31December 2015	31December 2014				31December 2015	31December 2014
NT Energy Pty Ltd	100%	100%	Ord	VIC	15/11/2006	100	100

The date of acquisition of the controlled entities was on the date of incorporation. The fair value of net assets acquired at the date of acquisition was nil. The principal activity of NT Energy Pty Ltd is uranium trading. The Group continued to develop the trading business during the year.

21. RELATED PARTY TRANSACTIONS

(a) Parent entities

The parent entity within the Group is Energy Metals Limited. The ultimate parent entity is China General Nuclear Power Corporation (formerly known as China Guangdong Nuclear Power Holding Co. Ltd.) (incorporated in the P.R. China) ("CGN") which at 31 December 2015 owned 66.45% (31 December 2014: 66.45%) of the issued ordinary shares of Energy Metals Limited.

(b) Subsidiaries

Interests in subsidiaries are set out in Note 20.

(c) Key Management Personnel

Disclosures relating to key management personnel are set out in Note 19.

(d) Transactions with related parties

The Company earned \$12,368 (2014: \$16,287) in management and facility administration fees from the Biglyi Joint Operation during the year.

(f) Loans to/from related parties

At 31 December 2015, the Company had other receivable of \$78,139 (2014: \$69,183) from NT Energy Pty Limited. The other receivable was unsecured, interest free and repayable on demand. The receivable was eliminated in the consolidated financial statements.

(g) Guarantees

There were no guarantees provided to the related parties during the year.

NOTES TO THE CONSOLIDATED FINANCIAL STATEMENTS FOR THE YEAR ENDED 31 DECEMBER 2015

22. REMUNERATION OF AUDITORS

	Consolidated	
	31 December 2015	31 December 2014
	\$	\$
Audit and review of the financial reports	52,750	65,000
Other services	-	-
	52,750	65,000

23. INTEREST IN JOINT OPERATIONS

The Company has the following interest in unincorporated joint operations:

Joint Operation	Principal Activity	% Interest	
		31 December 2015	31 December 2014
Bigirlyi Joint Operations	Uranium Exploration	53.29	53.29

The joint operation is a contractual arrangement between participants for the sharing of costs and outputs and did not generate revenue and profit. The joint Operation does not hold any assets and the Group's share of exploration and evaluation expenditure is accounted for in accordance with the policy set out in Note 1.

The Group's share of assets employed in the joint operation is:

	Consolidated	
	31 December 2015	31 December 2014
	\$	\$
CURRENT ASSETS		
Cash and cash equivalents	62,317	50,190
Term deposit	91,765	-
TOTAL CURRENT ASSETS	154,082	50,190
NON CURRENT ASSETS		
Receivable	-	88,566
Exploration and evaluation expenditure	14,046,382	13,984,598
TOTAL NON CURRENT ASSETS	14,046,382	14,073,164
TOTAL ASSETS	14,200,464	14,123,354

a) Commitments

There are no capital expenditure commitments for the Joint Operation as at 31 December 2015.

NOTES TO THE CONSOLIDATED FINANCIAL STATEMENTS FOR THE YEAR ENDED 31 DECEMBER 2015

23. INTEREST IN JOINT OPERATIONS (CONT'D)

The Group's share of estimated Year 2016 minimum expenditure commitments for the Joint Operation tenements is \$103,248 which is included in the commitment disclosed in Note 18.

b) Contingent liabilities

Claims of Native Title

There are no claims of Native Title that affect the Joint Operation licence holdings.

24. PARENT ENTITY INFORMATION

The following details information related to the parent entity, Energy Metals Limited, at 31 December 2015. The information presented here has been prepared using consistent accounting policies as presented in note 1.

	31 December 2015 \$	31 December 2014 \$
Current assets	22,103,641	23,010,371
Non-current assets	32,975,878	32,901,044
Total assets	55,079,519	55,911,415
Current liabilities	425,699	207,334
Total liabilities	425,699	207,334
Contributed equity	59,051,644	59,051,644
Accumulated losses	(4,397,824)	(3,347,563)
Total equity	54,653,820	55,704,081
Income for the year	707,123	927,430
Total comprehensive expense for the year	(1,050,261)	(500,667)

The principal activity of Energy Metals Limited subsidiary NT Energy Pty Ltd is uranium trading. The Group continued to develop the trading business of NT Energy Pty Ltd during the year and expect to recover its investment within NT Energy Pty Ltd.

25. EVENTS OCCURRING AFTER REPORTING DATE

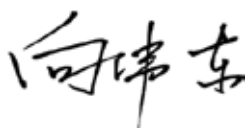
There has not arisen in the interval between the end of the financial year and the date of this report any item, transaction or event of a material and unusual nature likely, in the opinion of the Directors, to affect significantly the operations, the results of those operations, or the state of affairs of the Company in future financial years.

DECLARATION BY DIRECTORS

The directors of the Company declare that:

1. The financial statements, comprising the Consolidated Statement of Profit or Loss and Other Comprehensive Income, Consolidated Statement of Financial Position, Consolidated Statement of Cash flows, Consolidated Statement of Changes in Equity and accompanying notes are in accordance with the *Corporations Act 2001*, including:
 - (a) complying with Accounting Standards, the Corporations Regulations 2001 and other mandatory professional reporting requirements; and
 - (b) giving a true and fair view of the financial position as at 31 December 2015 and of the performance for the year ended on that date of the consolidated entity.
2. In the directors' opinion, there are reasonable grounds to believe that the Company will be able to pay its debts as and when they become due and payable.
3. The directors have been given the declarations by the Chief Executive Officer and Chief Financial Officer as required by section 295A of the *Corporations Act 2001*.
4. The consolidated entity has included in the notes to the financial statements an unreserved and explicit statement of compliance with International Financial Reporting Standards.

This declaration is made in accordance with a resolution of the Board of Directors and is signed for and on behalf of the directors by:



WEIDONG XIANG

Managing Director

Perth, Western Australia

11 March 2016



Deloitte Touche Tohmatsu
ABN 74 490 121 060

Tower 2, Brookfield Place
123 St Georges Terrace
Perth WA 6000

GPO Box A46
Perth WA 6837 Australia

Tel: +61 (0) 8 9365 7000
Fax: +61 (0) 8 9365 7001
www.deloitte.com.au

The Board of Directors
Energy Metals Limited
Level 2, 8 Colin Street
West Perth WA 60051

11 March 2016

Dear Board Members

Energy Metals Limited

In accordance with section 307C of the Corporations Act 2001, I am pleased to provide the following declaration of independence to the directors of Energy Metals Limited.

As lead audit partner for the audit of the financial statements of Energy Metals Limited for the year ended 31 December 2015, I declare that to the best of my knowledge and belief, there have been no contraventions of:

- (i) the auditor independence requirements of the Corporations Act 2001 in relation to the audit ; and
- (ii) any applicable code of professional conduct in relation to the audit.

Yours sincerely

Deloitte Touche Tohmatsu
DELOITTE TOUCHE TOHMATSU

Leanne Karamfiles
Partner
Chartered Accountants

Liability limited by a scheme approved under Professional Standards Legislation.

Member of Deloitte Touche Tohmatsu Limited



Deloitte Touche Tohmatsu
A.B.N. 74 490 121 060

Tower 2, Brookfield Place
123 St Georges Terrace
Perth WA 6000

GPO Box A46
Perth WA 6837 Australia

Tel: +61 (0) 2 9365 7000
Fax: +61 (0) 2 9365 7001
www.deloitte.com.au

Independent Auditor's Report to the members of Energy Metals Limited

Report on the Financial Report

We have audited the accompanying financial report of Energy Metals Limited, which comprises the consolidated statement of financial position as at 31 December 2015, the consolidated statement of profit or loss and other comprehensive income, the consolidated statement of cash flows and the consolidated statement of changes in equity for the year ended on that date, notes comprising a summary of significant accounting policies and other explanatory information, and the directors' declaration of the consolidated entity, comprising the company and the entities it controlled at the year's end or from time to time during the financial year as set out on pages 13 to 38.

Directors' Responsibility for the Financial Report

The directors of the company are responsible for the preparation of the financial report that gives a true and fair view in accordance with Australian Accounting Standards and the *Corporations Act 2001* and for such internal control as the directors determine is necessary to enable the preparation of the financial report that gives a true and fair view and is free from material misstatement, whether due to fraud or error. In Note 1, the directors also state, in accordance with Accounting Standard AASB 101 Presentation of Financial Statements, that the consolidated financial statements comply with International Financial Reporting Standards.

Auditor's Responsibility

Our responsibility is to express an opinion on the financial report based on our audit. We conducted our audit in accordance with Australian Auditing Standards. Those standards require that we comply with relevant ethical requirements relating to audit engagements and plan and perform the audit to obtain reasonable assurance whether the financial report is free from material misstatement.

An audit involves performing procedures to obtain audit evidence about the amounts and disclosures in the financial report. The procedures selected depend on the auditor's judgement, including the assessment of the risks of material misstatement of the financial report, whether due to fraud or error. In making those risk assessments, the auditor considers internal control, relevant to the entity's preparation of the financial report that gives a true and fair view, in order to design audit procedures that are appropriate in the circumstances, but not for the purpose of expressing an opinion on the effectiveness of the entity's internal control. An audit also includes evaluating the appropriateness of accounting policies used and the reasonableness of accounting estimates made by the directors, as well as evaluating the overall presentation of the financial report.

We believe that the audit evidence we have obtained is sufficient and appropriate to provide a basis for our audit opinion.

Liability limited by a scheme approved under Professional Standards Legislation.

Member of Deloitte Touche Tohmatsu Limited



Auditor's Independence Declaration

In conducting our audit, we have complied with the independence requirements of the *Corporations Act 2001*. We confirm that the independence declaration required by the *Corporations Act 2001*, which has been given to the directors of Energy Metals Limited, would be in the same terms if given to the directors as at the time of this auditor's report.

Opinion

In our opinion,

- (a) the financial report of Energy Metals Limited is in accordance with the *Corporations Act 2001*, including:
 - (i) giving a true and fair view of the consolidated entity's financial position as at 31 December 2015 and of its performance for the year ended on that date; and
 - (ii) complying with Australian Accounting Standards and the *Corporations Regulations 2001*; and
- (b) the consolidated financial statements also comply with International Financial Reporting Standards as disclosed in Note 1.

Report on the Remuneration Report

We have audited the Remuneration Report included in pages 7 to 11 of the directors' report for the year ended 31 December 2015. The directors of the company are responsible for the preparation and presentation of the Remuneration Report in accordance with Section 300A of the *Corporations Act 2001*. Our responsibility is to express an opinion on the Remuneration Report, based on our audit conducted in accordance with Australian Auditing Standards.

Opinion

In our opinion the Remuneration Report of Energy Metals Limited for the year ended 31 December 2015, complies with Section 300A of the *Corporations Act 2001*.

Deloitte Touche Tohmatsu
DELOITTE TOUCHE TOHMATSU

Leanne Karamfiles
Partner
Chartered Accountants
Perth, 11 March 2016

ADDITIONAL INFORMATION

The following additional information not shown elsewhere in this report is required by the Australian Stock Exchange Ltd in respect of listed public companies only. This information is current as at 12 April 2016.

SUBSTANTIAL SHAREHOLDERS

There were three substantial shareholders as at 12 April 2016:

- i. China Uranium Development Company Ltd holds 139,339,978 ordinary shares, or 66.45% of the voting rights in the Company;
- ii. KangDe Investment Group holds 26,553,722 ordinary shares, or 12.66% of the voting rights in the Company;
- iii. Jindalee Resources Limited holds 14,038,282 ordinary shares, or 6.69% of the voting rights in the Company.

ISSUED SECURITIES**Quoted Securities**

ASX Code	Number of Holders	Security Description	Total Securities
EME	683	Ordinary Fully Paid	209,683,312

VOTING RIGHTS

The voting rights of each class of share are as follows:

Ordinary Fully Paid Shares – one vote per share held.

DISTRIBUTION SCHEDULE

Spread of Holdings			Ordinary Shares (EME)	units	%
1	-	1,000	153	72,421	0.03
1,001	-	5,000	219	595,586	0.28
5,001	-	10,000	102	794,412	0.38
10,001	-	100,000	181	5,608,209	2.67
100,001	-	and over	28	202,612,684	96.63
TOTAL HOLDERS			683	209,683,312	100%

UNMARKETABLE PARCELS

As at 12 April 2016 there were 396 shareholders holding less than a marketable parcel of shares.

BUY-BACK

There is no current on-market buy-back.

ADDITIONAL INFORMATION

20 LARGEST SHAREHOLDERS

The names of the twenty largest shareholders (ASX Code: EME) are listed below:

Name	% of Issued Securities	Number of Ordinary Shares
1. China Uranium Development Company Ltd	66.45	139,339,978
2. KangDe Investment Group	12.66	26,553,722
3. Jindalee Resources Limited	6.69	14,038,282
4. Mr. Cui Bin	3.58	7,506,084
5. Kale Capital Corporation Ltd	2.79	5,851,745
6. Lindsay George Dudfield	1.22	2,556,540
7. Central Pacific Minerals NL	0.57	1,200,000
8. Pershing Australia Nominees Pty Ltd	0.52	1,092,500
9. Lindsay George Dudfield and Yvonne Sheila Doling	0.33	698,625
10. Yandal Investments Pty Ltd	0.24	511,718
11. Redross Consultants Pty Ltd	0.22	468,900
12. Teck Australia Pty Ltd	0.21	438,141
13. M & K Korkidas Pty Ltd	0.19	403,167
14. Mr. Philip William Saunders	0.14	300,000
15. Mr. Kelvin Mark Johnson	0.14	300,000
16. Mr. Zhongqing Zhang	0.13	267,255
17. Mr Dezong Yuan	0.10	200,657
18. Canie Pty Ltd	0.10	200,000
19. JP Morgan Nominees Australia	0.08	172,594
20. Mr. Desmond Chung Seng Chiong	0.07	150,000

ADDITIONAL INFORMATION

INTERESTS IN MINING TENEMENTS as at 12 April 2016.**Western Australia**

E08/1480	Manyingee	Granted
R21/1	Lakeside	Granted
R29/1	Mopoke Well	Granted
R57/2	Lake Mason	Granted
R58/2	Anketell	Granted

Northern Territory

ELR46* ¹	Bigirlyi Project	Granted	MCSA318* ¹	Ngalia Regional	Application
ELR47* ¹	Bigirlyi Project	Granted	MCSA319* ¹	Ngalia Regional	Application
ELR48* ¹	Bigirlyi Project	Granted	MCSA320* ¹	Ngalia Regional	Application
ELR49* ¹	Bigirlyi Project	Granted	MCSA321* ¹	Ngalia Regional	Application
ELR50* ¹	Bigirlyi Project	Granted	MCSA322* ¹	Ngalia Regional	Application
ELR51* ¹	Bigirlyi Project	Granted	MCSA323* ¹	Ngalia Regional	Application
ELR52* ¹	Bigirlyi Project	Granted	MCSA324* ¹	Ngalia Regional	Application
ELR53* ¹	Bigirlyi Project	Granted	MCSA325* ¹	Ngalia Regional	Application
ELR54* ¹	Bigirlyi Project	Granted	MCSA326* ¹	Ngalia Regional	Application
ELR55* ¹	Bigirlyi Project	Granted	MCSA327* ¹	Ngalia Regional	Application
EL30689* ¹	Bigirlyi Project	Granted	MCSA328* ¹	Ngalia Regional	Application
EL24451	Ngalia Regional	Granted	MLNA1952* ¹	Ngalia Regional	Application
EL24453	Ngalia Regional	Granted	ELA31098	Ngalia Regional	Application
EL24463	Ngalia Regional	Granted			
EL24533	Ngalia Regional	Granted			
ELR41* ²	Ngalia Regional	Granted			
ELR45* ³	Ngalia Regional	Granted			
EL24804	Ngalia Regional	Granted			
EL30002	Ngalia Regional	Granted			
EL30004	Ngalia Regional	Granted			
EL30006	Ngalia Regional	Granted			
EL30144* ¹	Ngalia Regional	Granted			
EL30145* ¹	Ngalia Regional	Granted			
ELA24462	Ngalia Regional	Application			
ELA24450	Ngalia Regional	Application			
EL24807	Ngalia Regional	Granted			
ELA27169	Ngalia Regional	Application			
ELA27333	Macallan	Application			

All of the above tenements are beneficially owned by Energy Metals Limited and percentage interest is 100% unless otherwise stated.

ADDITIONAL INFORMATION

ABBREVIATIONS

*1	=	53.3% interest	E	=	Exploration Licence (WA)
*2	=	52.1% interest	R	=	Retention License (WA)
*3	=	41.9% interest	EL	=	Exploration Licence (NT)
			ELA	=	Exploration Licence Application (NT)
			ELR	=	Exploration Licence in Retention (NT)
			ELRA	=	Exploration License in Retention Application(NT)
			MCSA	=	Mineral Claim (Southern) Application (NT)
			MLNA	=	Mineral Lease (Northern) Application (NT)

This page is blank intentionally



 **Energy**
Metals Limited

Level 2, 28 Kings Park Road
WEST PERTH WA 6005