

Company Update

31 October 2016

Incorporating New Drilling Results
and Exploration Updates



Disclaimer

2

The following disclaimer applies to this presentation and any information provided regarding the information contained in this presentation. You are advised to read this disclaimer carefully before reading or making any other use of this presentation or any information contained in this presentation. In accepting this presentation, you agree to be bound by the following terms and conditions, including any modifications to them. This presentation has been prepared by Zinc of Ireland NL ("ZMI"). The information contained in this presentation is a professional opinion only and is given in good faith. Certain information in this document has been derived from third parties and though ZMI has no reason to believe that it is not accurate, reliable or complete, it has not been independently audited or verified by ZMI. The information contained in this presentation is for information only and does not constitute an offer to sell, issue or arrange to sell securities or other financial products. Any forward-looking statements included in this document involve subjective judgement and analysis and are subject to uncertainties, risks and contingencies, many of which are outside the control of, and maybe unknown to ZMI. In particular, they speak only as of the date of this document, they assume the success of ZMI's strategies, and they are subject to significant regulatory, business, competitive and economic uncertainties and risks. Actual future events may vary materially from the forward looking statements and the assumptions on which the forward-looking statements are based. Recipients of this document ("Recipients") are cautioned to not place undue reliance on such forward-looking statements. Past performance is not guarantee of future performance. ZMI makes no representation or warranty, expense or implication as to the accuracy, reliability or completeness of information or the likelihood of achievement or reasonability of forecasts, prospects or returns capital in this document and does not take responsibility for updating any information or correcting any error or omission which may become apparent after this document has been issued. To the extent permitted by law, ZMI and its related bodies corporate and any of their respective officers, employees and agents and any other person ("Agents") disclaim all liability, direct, indirect or consequential (and whether or not arising out of the negligence, default or lack of care of ZMI and/or any of its Agents) for any loss or damage suffered by a Recipient or other persons arising out of, or in connection with, any use or reliance on this presentation or information. This presentation has been prepared without taking into account the investment objectives, financial situation or particular needs of any particular person. You are totally responsible for forming your own opinions and conclusions on such matters in the market and for making your own independent assessment of the information. You are solely responsible for seeking independent profession advice in relation to the information and any action taken on the basis of the information. All currency amounts are in A\$ unless stated otherwise. The release, publication or distribution of this presentation in jurisdictions outside of Australia may be a violation of applicable laws.

Competent Person Statements

The information in this presentation that relates to exploration results is based on information compiled by Mr Benjamin Sharp BSc MAIG, a Competent Person who is a Member of the Australian Institute of Geoscientists (Membership No.4289). Mr Sharp is a director and shareholder of Zinc of Ireland NL. Mr Sharp has sufficient experience, which is relevant to the style of mineralisation and types of deposits under consideration and to the activity which has been undertaken to qualify as a Competent Person as defined in the 2012 edition of the Australasian Code for Reporting of Exploration Results, Mineral Resources and Ore Reserves (JORC Code). Mr Sharp consents to the inclusion in the presentation of the matters based on his information in the form and context in which it appears.

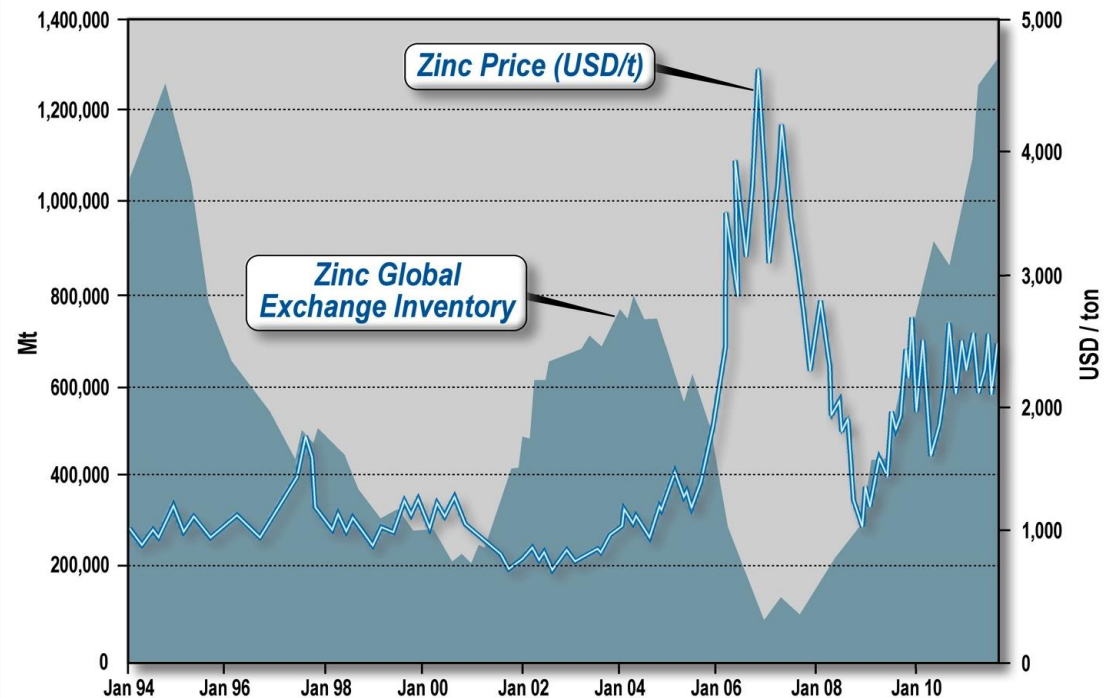
Company Highlights

- ✦ Capitalising on **very positive zinc outlook**.
- ✦ **Mining friendly jurisdiction**, extensive infrastructure.
- ✦ **Strong cash position** of ~ \$2.6 million to enable aggressive exploration and development.
- ✦ Control of **the Kildare MVT district**: valuable historical exploration, significant growth potential.
- ✦ Maiden drilling program returned **wide, high grade intercepts** including:
 - ✦ **15.65m@11.17% Zn & Pb (10.36% Zn)**
- ✦ **6 other zinc projects** in Ireland, **gold potential** at Monaghan.

WHY ZINC? Strong Fundamentals

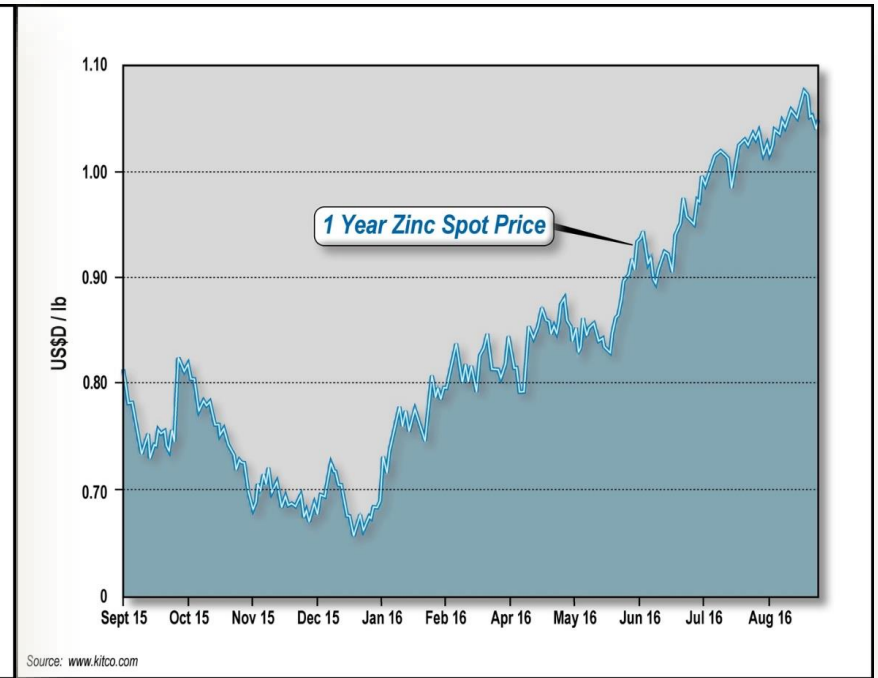
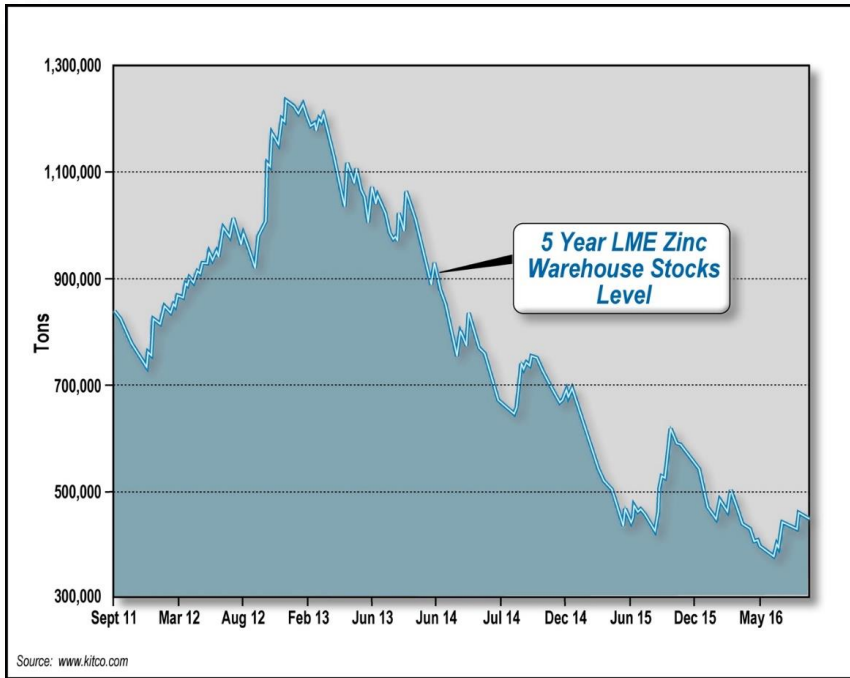
4

- ✦ Zinc is the LME's best performer in 2016.
- ✦ LME zinc stockpiles are at 12 year lows, declining for the past four years.
- ✦ Forecast to be a large deficit for the next two years and beyond.
- ✦ Additional 3.0 - 3.5Mt of zinc needed for the next 5 years to meet forecast demand and balance current deficit.



- ✦ ZINC MARKET FUNDAMENTALS REMAIN STRONG AND CONTINUE TO IMPROVE

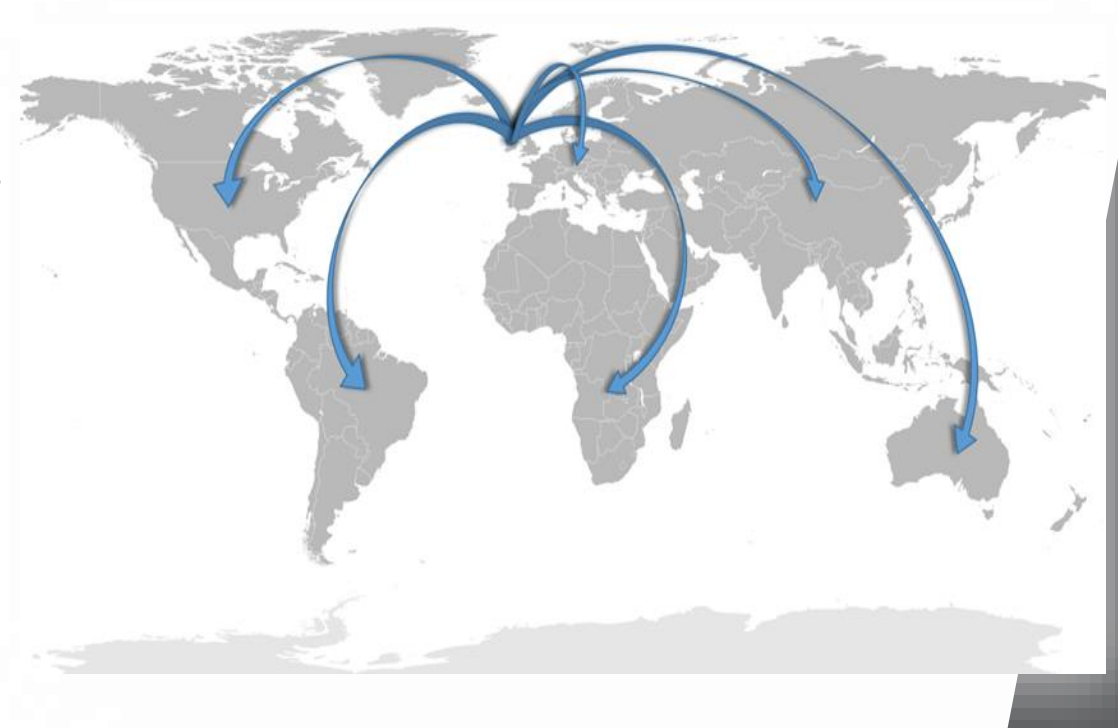
Shrinking Stockpiles = Increased Price



Why Ireland?

6

- ✦ Ireland is the World's 10th largest Zinc producer and Europe's largest.
- ✦ Stable Government and mining friendly.
- ✦ Access to European and Global markets.
- ✦ Extensive infrastructure and access to several ports.
- ✦ Many of the world's largest zinc producers hold established positions (e.g. Teck, Boliden, and Vedanta).



ZMI in Ireland

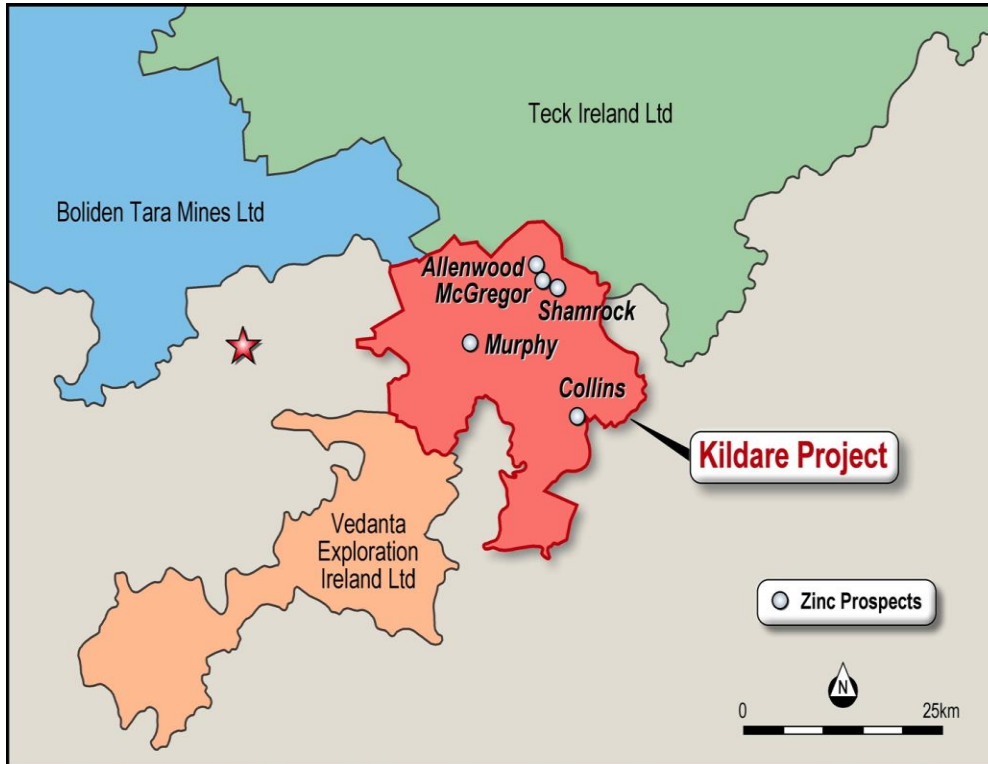
7

- ♦ ~1,000km² landholding at 7 projects recognized for zinc mineralisation.
- ♦ Kildare (Zn, Pb)
- ♦ Navan (Zn, Pb)
- ♦ Ballinasloe (Zn, Pb)
- ♦ Sligo (Zn, Pb)
- ♦ Monaghan (Au, Zn, Pb)
- ♦ Galway (Zn, Pb)
- ♦ Cork (Zn, Pb)
- ♦ Proximal to **existing major operations.**
- ♦ **Infrastructure** to support exploration and development.
- ♦ Experienced in-country technical team assembled.



KILDARE: Set Amidst the Majors

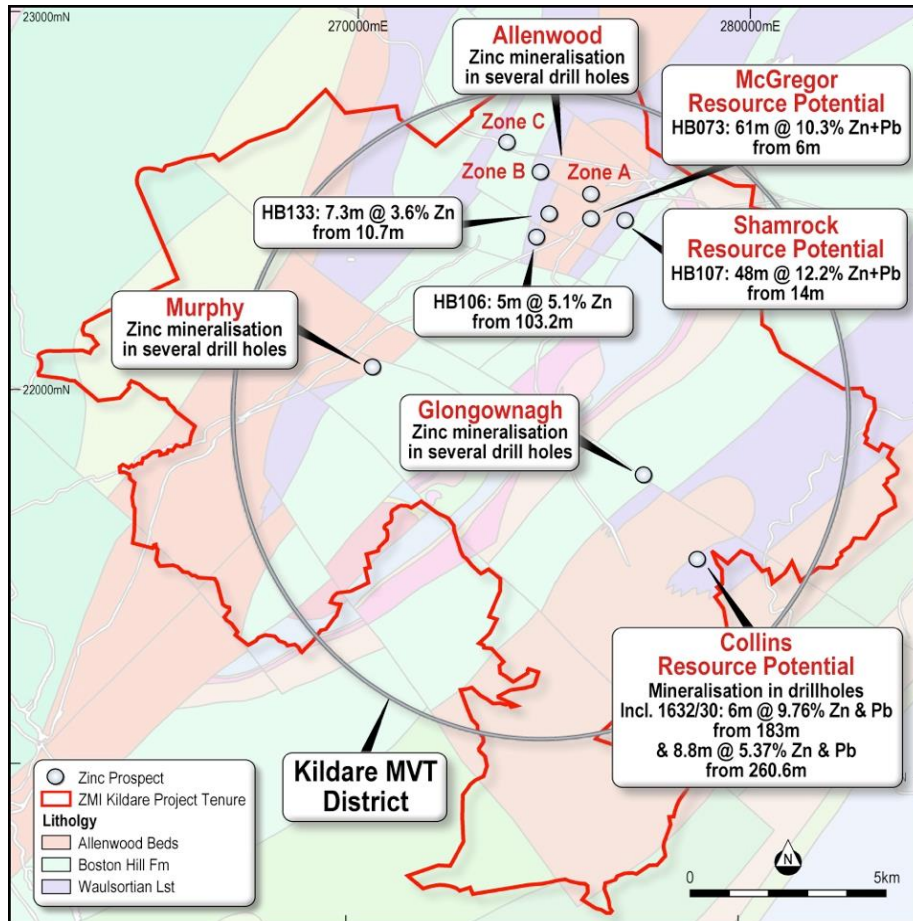
8



- ♦ ~250km² land position adjacent to major mining companies.
- ♦ Teck (Canada's largest diversified resources company).
- ♦ Boliden (Navan Mine).
- ♦ Vedanta (Lisheen Mine).
- ♦ Significant historical mineralization;
48m@12.2% Zn+Pb from 14m and
61m@10.3% Zn+Pb from 6m.

The Kildare MVT District

9

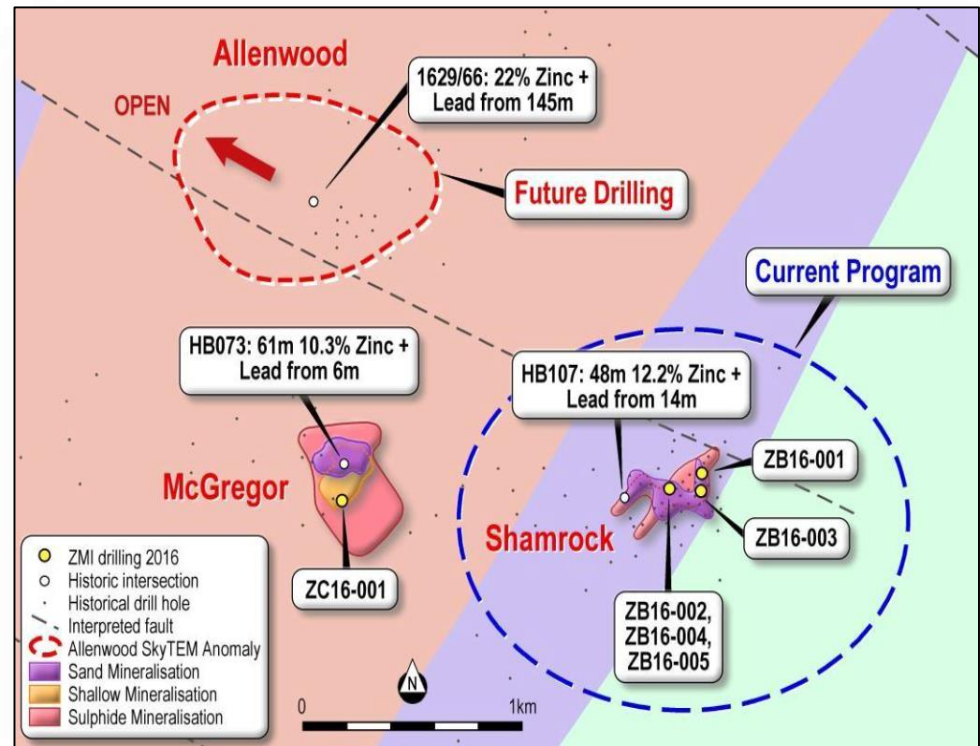


- ♦ The Kildare District is host to numerous Mississippi Valley type (MVT) Zinc-rich breccias.
- ♦ Several may have been drilled densely enough to warrant resource evaluation.
- ♦ Others have been intercepted by a few drill holes with encouraging results.
- ♦ Favourable host rock 'Waulsortian Limestone' forms a bed across the district.

Maiden Drilling Program

10

- ✦ 6 holes drilled for a total 2,252m at Shamrock and McGregor Prospects.
- ✦ Testing top of reef, base of reef and sub-reef horizons.
- ✦ Designed to confirm historical data and test for extensions.
- ✦ Considerable technical information acquired; drilling conditions, optimum angles, penetration rates, costs, QC, sampling and assay methods.



- ✦ ZB16-001 to -004 Assays received
- ✦ ZB16-005 and ZC16-001 assays pending

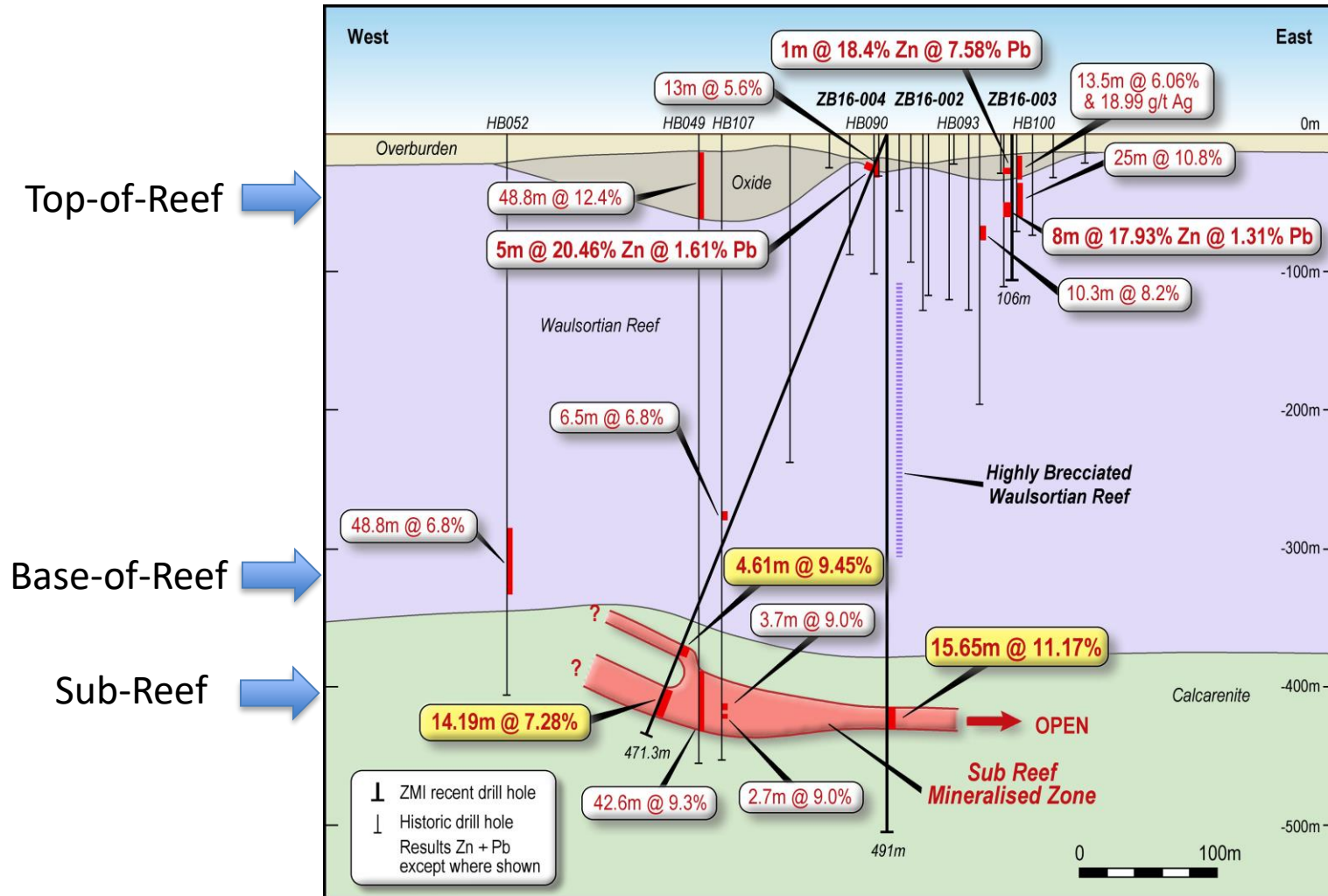
Highly Encouraging Results

11

- ✦ All four Shamrock holes assayed so far are strongly mineralised.
- ZB16-001: **4.45m @ 4.87% Zn + Pb (4.74% Zn) from 57.95m and**
 - **11.3m @ 6.5% Zn + Pb (5.75% Zn) from 67.5m including**
 - **3.0m @ 12.75% Zn + Pb (11% Zn) from 72.7m**
- ZB16-002: **1.8m @ 8.14% Zn + Pb (5.9% Zn) from 371.05m and**
 - **24.35m @ 8.9% Zn + Pb (8.19% Zn) from 413.45m including**
 - **15.65m @ 11.17% Zn + Pb (10.36% Zn) from 417.15m**
- ZB16-003: **13.5m @ 6.06% Zn + Pb & 18.99g/t Ag from 19m**
- ZB16-004: **4.61m @ 9.45% Zn + Pb (8.48% Zn) from 400.9m and**
 - **14.19m @ 7.28% Zn + Pb (6.67% Zn) from 435.9m incl.**
 - **2.53m @ 18.52% Zn + Pb (16.65% Zn) from 435.9m**

Note: ZB16-004 intersections refer to a calculated true vertical width due to inclined drill hole

Shamrock Section; ZB16-002, 3, 4 12



Kildare Mineralised Breccias

13

- ✦ Several mineralised *breccias* were intercepted by recent drilling at Kildare; representative of MVT style.
- ✦ Signify post depositional mineralization and structural controls.
- ✦ Commonly at Top-of-Reef and Base-of-Reef, with sphalerite (ZnS) forming matrix between the breccia fragments.



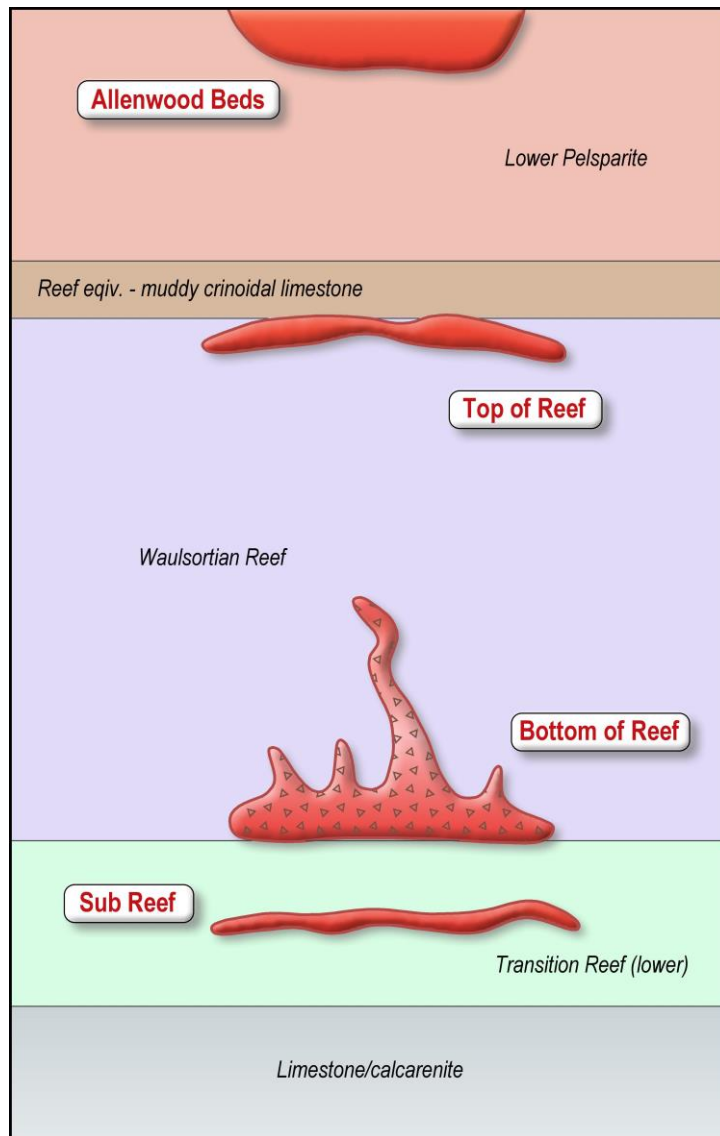
Up to
2% Zn

Coliform
Textures
5-10% Zn

Coliform
massive
sulphide
<30% Zn

Kildare Mineralised Horizons

14

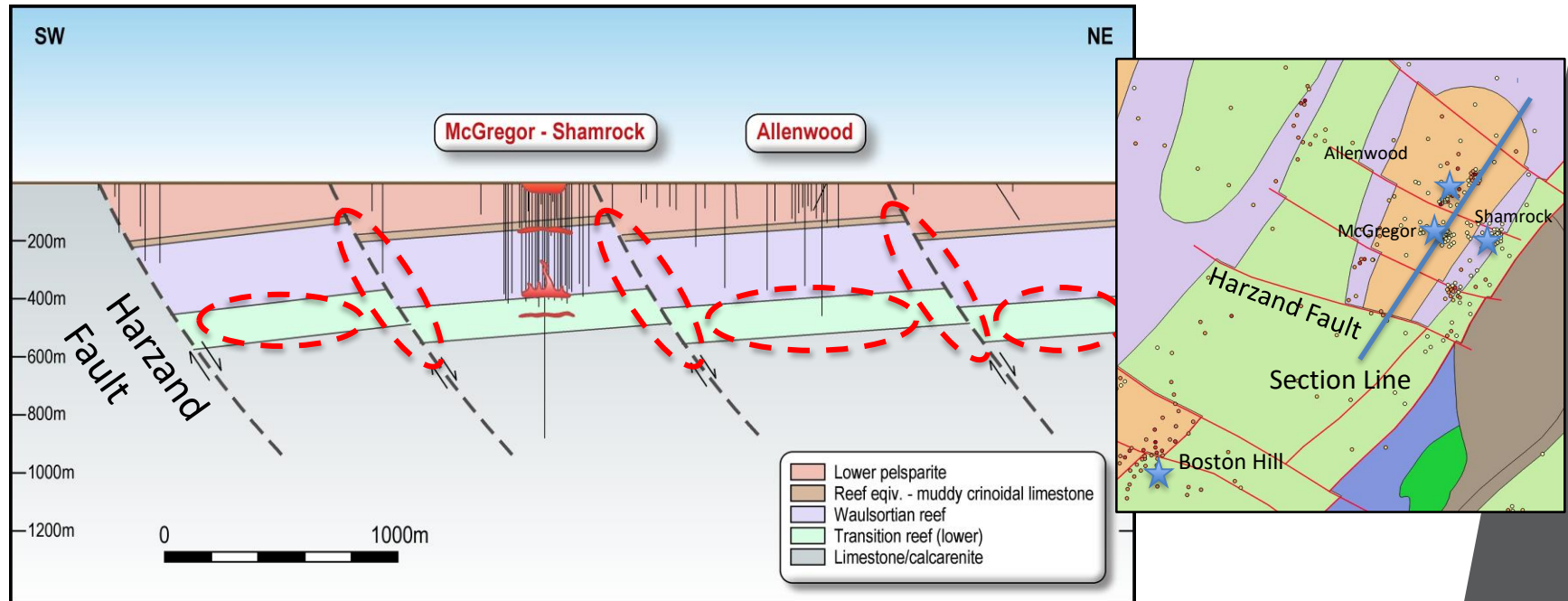


- ✦ 4 distinct mineralised horizons are known within the Kildare MVT District stratigraphy.
- ✦ The lower three occur at Shamrock; indications of all four at McGregor.
- ✦ The erosion level is a critical in dictating which are present and whether one will outcrop. (i.e. Allenwood Beds at McGregor and Top of Reef at Shamrock).

Schematic section showing mineralised horizons; not to scale

Kildare Exploration Upside

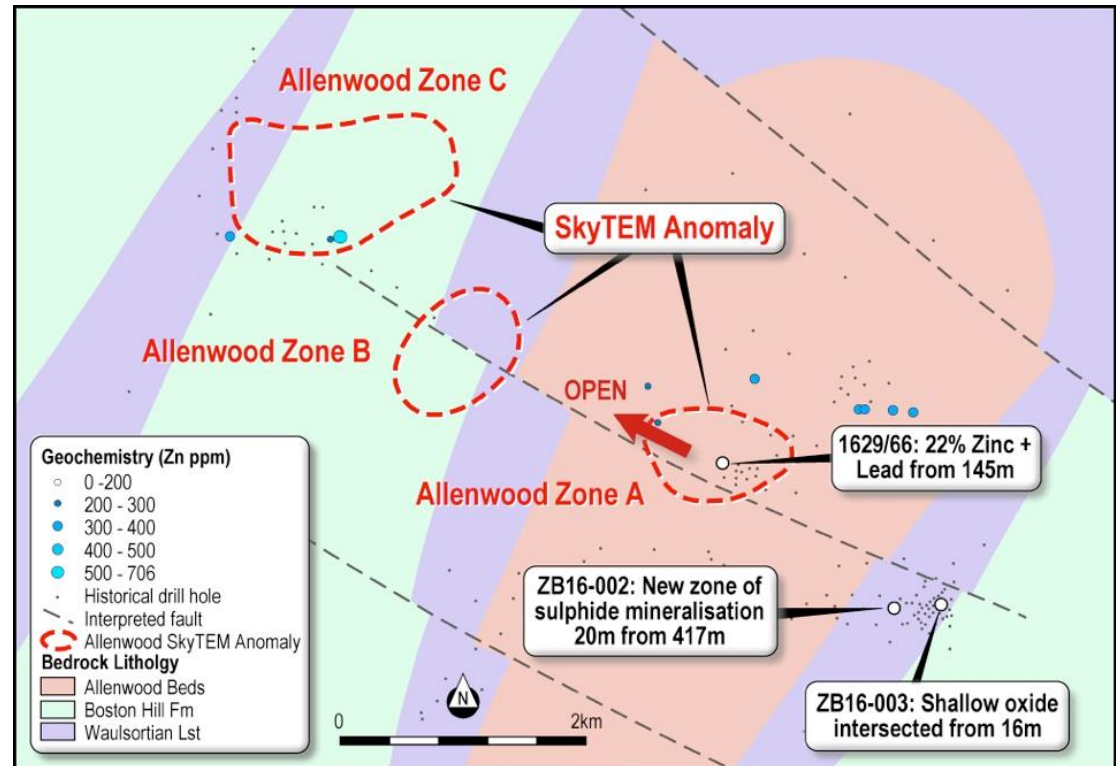
15



- ✦ Series of faulted blocks along more than 5km strike.
- ✦ Little or no testing of Base-of-Reef or Sub-Reef beyond Shamrock and McGregor Prospects.
- ✦ Little or no testing of faults.

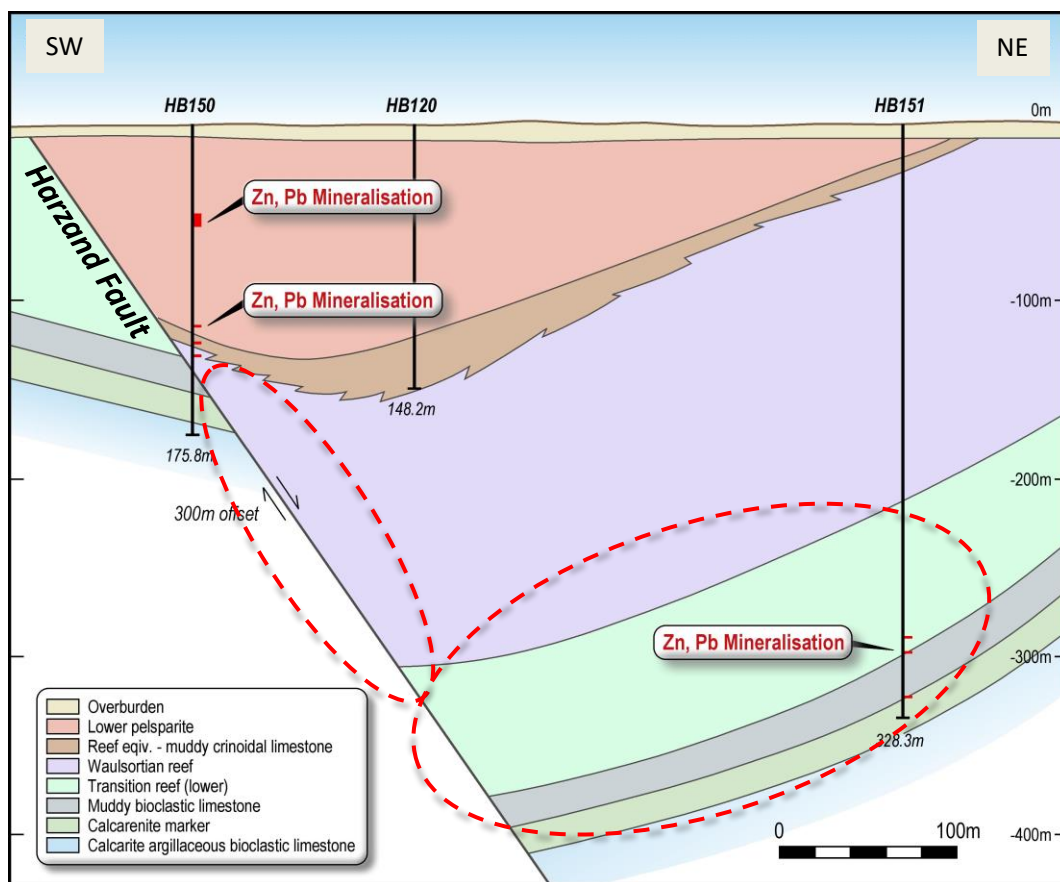
Allenwood Prospect; Top Priority 16

- ◆ **3 SkyTEM anomalies** along 5km fault at Allenwood.
- ◆ Coincident with historical drill intersections and **soil geochemical anomalies**.
- ◆ Historical results include 5.2m @ 8.17% Zn and 0.3m @ 20.1% Zn in 1629/66.



Harzand Fault: High Priority

17



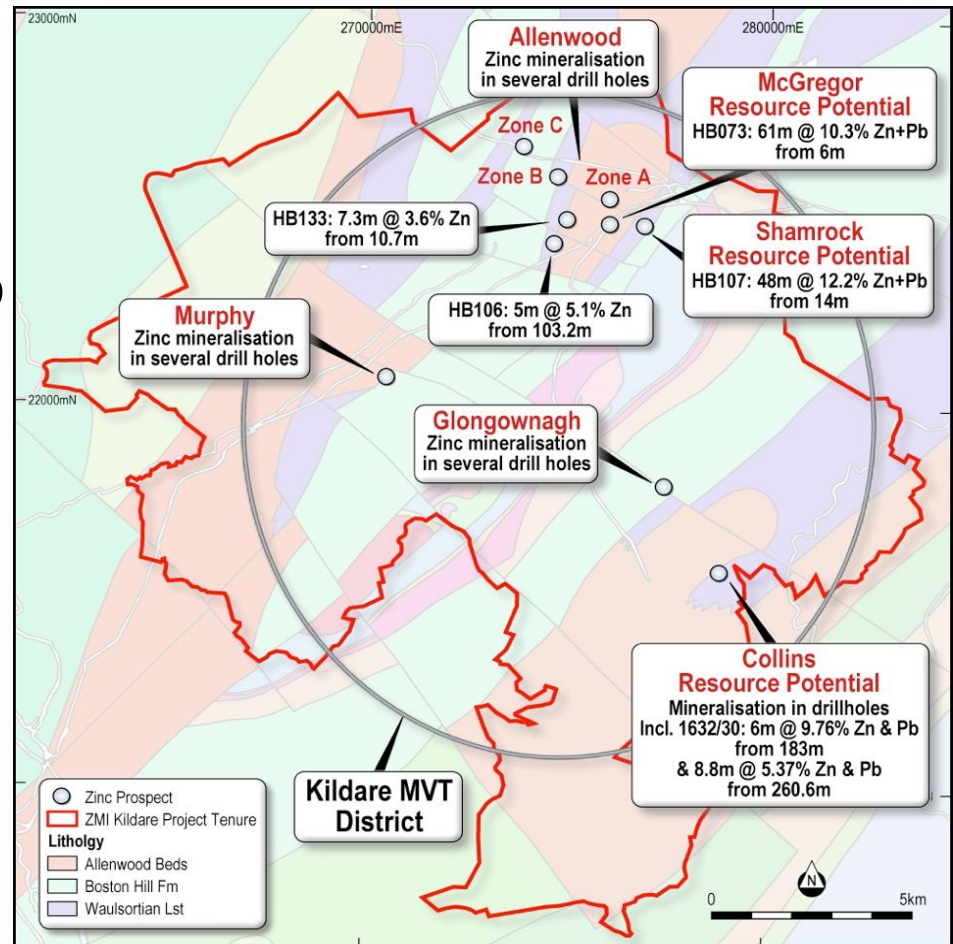
- ◆ ~300m 'normal' displacement along the Harzand Fault.
- ◆ Little or no testing of target horizons within 300m of the fault.
- ◆ This would seem to be a high-priority target.

- ◆ Controls on mineralization becoming understood.
- ◆ Plans to test Base of Reef and Sub Reef targets.

Kildare Regional Exploration

18

- ✦ Historical intersections in sporadic, shallow drilling, e.g. HB133, HB106.
- ✦ Several prospects followed up by previous owners, e.g. Boston Hill and Collins.
- ✦ ZMI to continue correlating historical data which includes soil surveys, top of bedrock drilling, geophysical surveys including TEM and gravity, and wide spaced drilling amounting to many millions of dollars in value.



Other Irish Projects

19

NAVAN

15km SE of the Navan Tara mine (69.9Mt @ 10.1% Zn & 2.6% Pb).

Coincident geochemical and geophysical anomalies.

BALLINASLOE

Widespread regional mineralisation associated with Waulsortian Limestone (incl. 0.6m @ 35% Zn from 6m).

SLIGO

5m x 1m outcrop of galena & sphalerite associated with fault.

MONAGHAN

Historic zinc/lead mining with structurally controlled elevated base metal anomalies.

Gold Potential.

GALWAY

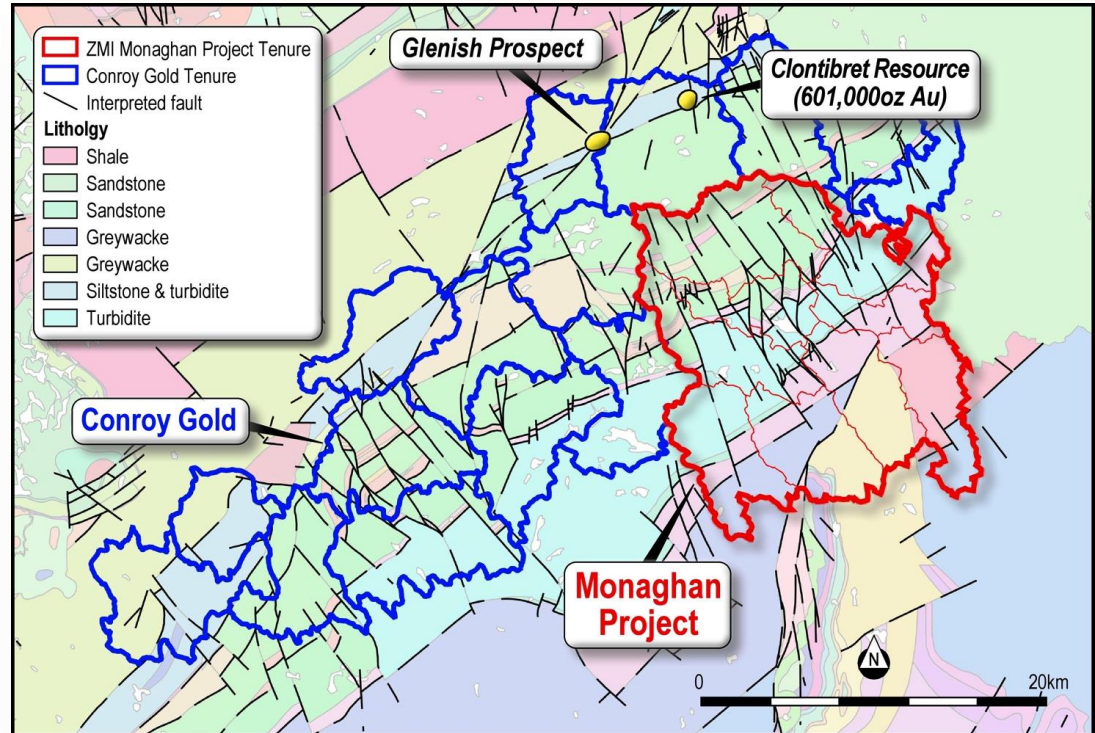
Historic zinc/lead mining with base metal and gold prospectivity.

CORK

Hosts the Rag Bridge anomaly including 3.79% Pb + Zn over 1.63m (from 17m) and 3.84% Pb+Zn over 1.6m (from 120.75m).

Monaghan; A Golden 'Smokey' 20

- ♦ Strategic land position close to known gold mineralisation (Conroy Gold).
- ♦ Favourable gold 'host rocks' derived from turbidite sequences.
- ♦ Favourable regional faulting and cross faulting for gold.
- ♦ Favourable deformation for gold.

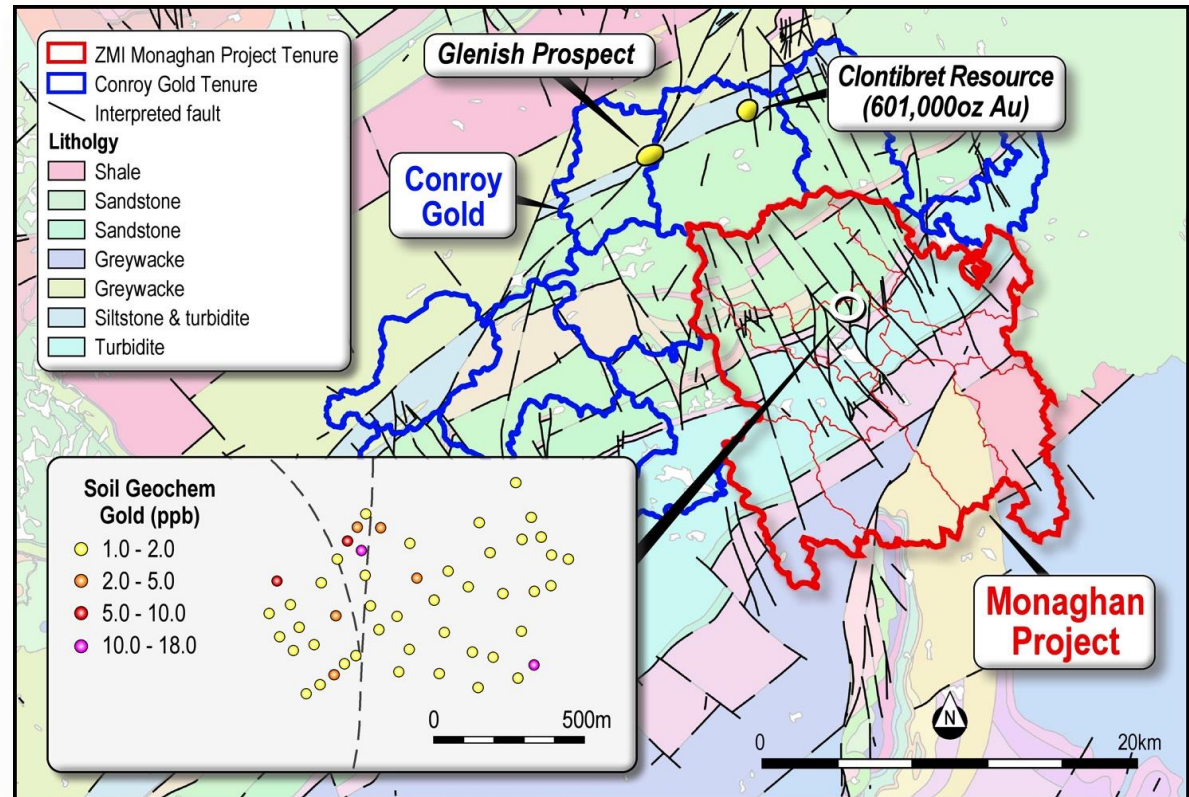


- ♦ TURBIDITE SEQUENCES HOST SOME OF THE WORLDS LARGEST GOLD DEPOSITS, E.G. MURUNTOU (>150MOZ) AND TELFER (>50MOZ).

.....with Upside

21

- ✦ Soil geochemistry highlights gold anomaly
- ✦ Coincident with faulting, block offsets and rotations
- ✦ Tellus Border data highlights elevated gold pathfinder elements and multi-element geochem.
- ✦ Favourable rock types; Favourable faulting; Favourable deformation; Gold-in-soils anomaly; Multi-element anomaly; Proximity to known gold mineralisation.....= GOLD TARGET.



Corporate Information

22

CAPITAL STRUCTURE	
Share price (as at 28 October 2016)	\$0.016
Shares on issue	914,132,532
Quoted Options (Ex \$0.02, 21 July 2017)	325,833,333
Unquoted Options (various issue prices and expiry dates)	453,324,949
Cash	~ \$2,600,000
Market capitalization	~\$14,626,120

DIRECTORS

Mr Patrick Corr - Non Executive Chairman

Mr Peter van der Borgh - Managing Director

Mr Benjamin Sharp - Technical Director

Mr Thomas Corr - Non Executive Director

Suite 1, 56 Kings Park Road
West Perth
Western Australia, 6005
Facsimile: INT + (61 8) 9481 0655

info@zincofireland.com

www.zincofireland.com

