

29 July 2016

Quarterly Activities Report – Quarter Ended 30 June 2016

Acquisition of Nevada Lithium Projects

During the quarter ended 30 June 2016, the Company advised that it had entered into restriction agreements with the vendors of Nevada Metals Pty Ltd in relation to the issue of 600,000,000 fully paid ordinary shares as consideration payable. The restriction agreement provides for a period of six months escrow, being 29 December 2016.

On 23 May 2016, the Company announced that following a very successful site visit to Nevada, the Company had satisfactorily completed its due diligence in relation to the acquisition of the Lida Valley and Muddy Mountain Projects.

The shareholders of the Company approved the acquisition of Nevada Metals Pty Ltd and a 100% interest in the Lida Valley and Muddy Mountain Projects at the general meeting held on 28 June 2016.

Exploration

On 26 April 2016, the Company advised that a detailed ground gravity program on the Lida Valley Lithium Brine Project would commence in May as part of the Company's due diligence process.

Ground Gravity Program:

A detailed ground gravity survey of the Lida claim block in Esmeralda County, Nevada at a nominal 250m x 250m grid spacing, totalling up to 500 stations (**Figure 1**) was planned. Relative gravity measurements would be made using a Scintrex CG-5 High Temperature gravimeter, and station location would be determined using a Topcon Real-Time Kinematic (RTK) GNSS system. Hand-auger sampling would also be requested to evaluate immediate subsurface lithium concentrations.

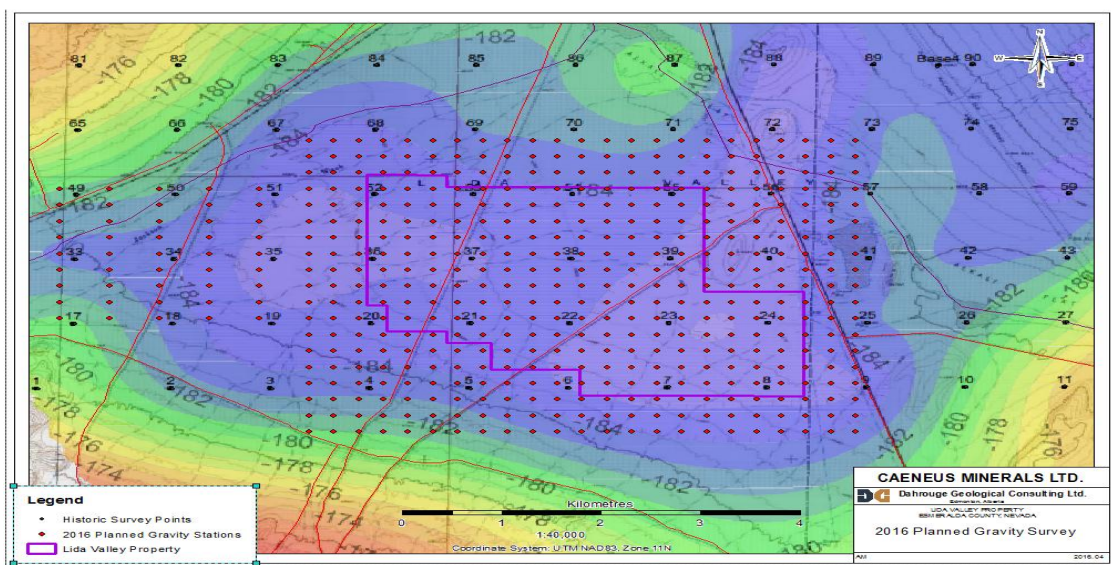


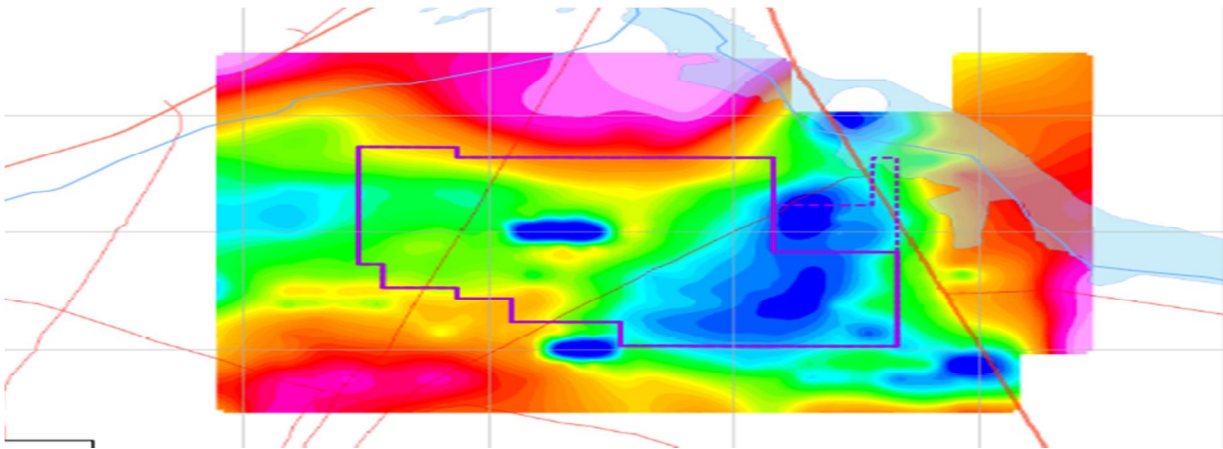
Figure 1: Lida Valley Ground Gravity Grid

On 14 June 2016, the Company announced the results from the detailed ground gravity survey at the Lida Valley Project situated 220 kilometers northwest of Las Vegas and 50 kilometres southeast of the Clayton Valley lithium operation in Nevada.

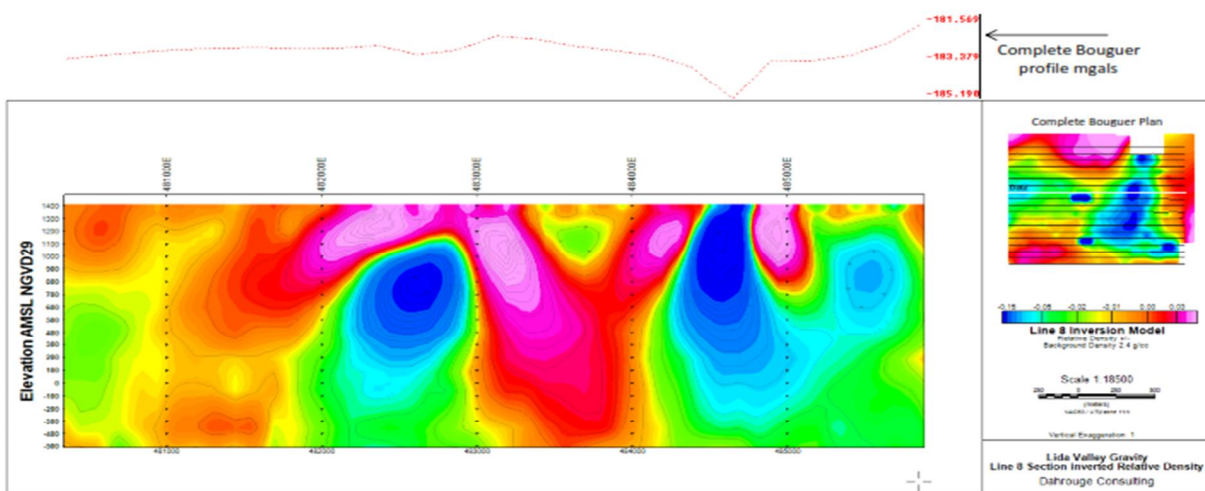
Lida Valley occupies a valley similar to the Clayton Valley with preliminary airborne aeromagnetic data showing a gravity low in the Lida Valley lease area. Gravity lows in this region typically indicate the presence of a sedimentary basin often containing evaporite sediments and lithium-bearing brines.

The detailed ground-borne gravity survey has confirmed the presence of a significant gravity low in the east of the Company’s claims. This gravity low is about 1.5 to 2 kilometers wide in an east-west direction and 3 kilometers long in a north-south direction. The Company is confident that the gravity low indicates the presence of a sedimentary basin similar to that described above. Significantly, the gravity low is situated to the south of the Lida Valley proper and the drainages associated with it. The smaller sharp elliptical lows may be bedrock highs, possibly felsic volcanic plugs sticking up into the sediments.

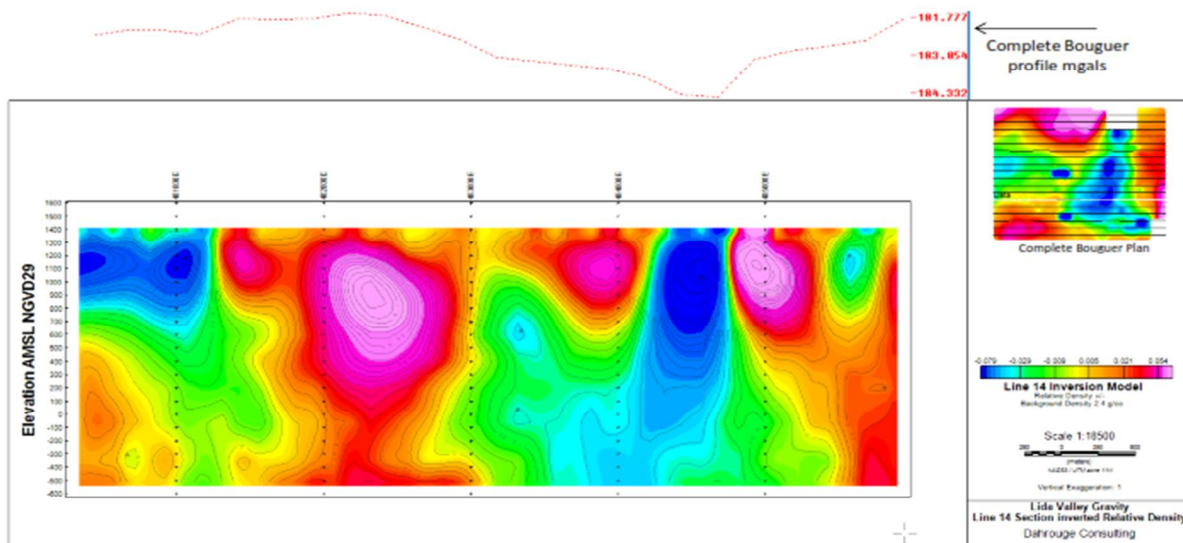
The basin as defined by gravity extends beyond the northeast boundary of the current leases. The Company has rectified this situation by staking new claims over the currently unclaimed portion of the basin (dashed outline below).



Preliminary evaluation indicates that the deepest part of the basin on the east side of the claim block exceeds 300 meters in depth. This gives the basin a total volume in excess of 700 million cubic meters, much of which may contain lithium-rich brines. Low density continues to a depth of about 1,700m (see section 8 and 14 below) suggesting the basin may be substantially deeper.



Section 8 Gravity Profile



Section 14 Gravity Profile

The information in this announcement that relates to Exploration Results, Mineral Resources or Ore Reserves is based on information compiled by Mr Steven Elliott who is a Member of the Australian Institute of Mining and Metallurgy. Mr Elliott is a director to the Company. Mr Elliott has sufficient experience which is relevant to the style and type of deposit under consideration and to the activity which he is undertaking to qualify as a Competent Person as defined in the 2012 edition of the Joint Ore Reserves Committee (JORC) Australasian Code for Reporting of Exploration Results, Minerals Resources and Ore Reserves. Mr Elliott consents to the inclusion in the announcement of the matters based on his information in the form and context in which it appears.

For and on behalf of the Board

Steven Elliott
Managing Director

Appendix 5B

Mining exploration entity and oil and gas exploration entity quarterly report

Introduced 01/07/96 Origin Appendix 8 Amended 01/07/97, 01/07/98, 30/09/01, 01/06/10, 17/12/10, 01/05/2013

Name of entity

CAENEUS MINERALS LTD

ABN

42 082 593 235

Quarter ended ("current quarter")

30 June 2016

Consolidated statement of cash flows

| Cash flows related to operating activities | Current quarter \$A'000 | Year to date (12 months) \$A'000 |
|---|----------------------------|--|
| 1.1 Receipts from product sales and related debtors | - | - |
| 1.2 Payments for (a) exploration & evaluation | (121) | (250) |
| (b) development | - | - |
| (c) production | - | - |
| (d) administration | (193) | (831) |
| 1.3 Dividends received | - | - |
| 1.4 Interest and other items of a similar nature received | - | 1 |
| 1.5 Interest and other costs of finance paid | - | - |
| 1.6 Income taxes paid | - | - |
| 1.7 Other income (GST) | 19 | 19 |
| Net Operating Cash Flows | (295) | (1,061) |
| Cash flows related to investing activities | | |
| 1.8 Payment for purchases of: | | |
| (a) prospects | (74) | (74) |
| (b) equity investments | - | - |
| (c) other fixed assets | - | - |
| 1.9 Proceeds from sale of: | | |
| (a) prospects | - | - |
| (b) equity investments | - | - |
| (c) other fixed assets | - | - |
| 1.10 Loans to related entities | - | (25) |
| 1.11 Loans repaid by other entities | - | - |
| 1.12 Other (provide details if material) | - | - |
| Net investing cash flows | (74) | (99) |
| 1.13 Total operating and investing cash flows (carried forward) | (369) | (1,160) |

+ See chapter 19 for defined terms.

Appendix 5B
Mining exploration entity and oil and gas exploration entity quarterly report

| | | | |
|---|--|-------|---------|
| 1.13 | Total operating and investing cash flows (brought forward) | (369) | (1,160) |
| Cash flows related to financing activities | | | |
| 1.14 | Proceeds from issues of shares, options, etc. | 2 | 1,186 |
| 1.15 | Proceeds from sale of forfeited shares | | |
| 1.16 | Proceeds from borrowings | | |
| 1.17 | Repayment of borrowings | | |
| 1.18 | Dividends paid | | |
| 1.19 | Other | | |
| | - Funds received from shares yet to be issued | 60 | 60 |
| | - Issue of convertible notes | - | 150 |
| | - Share issue costs | - | (34) |
| | Net financing cash flows | 62 | 1,362 |
| | Net increase (decrease) in cash held | (307) | 202 |
| 1.20 | Cash at beginning of quarter/year to date | 514 | 5 |
| 1.21 | Exchange rate adjustments to item 1.20 | | |
| 1.22 | Cash at end of quarter¹ | 207 | 207 |

¹ Subsequent to the end of the quarter, the Company raised \$1,230,702 (before costs) via a placement to sophisticated and institutional investors. The Company also received \$120,793 following the exercise of 40,264,309 unlisted 31/12/2020 options.

Payments to directors of the entity, associates of the directors, related entities of the entity and associates of the related entities

| | | Current quarter \$A'000 |
|------|--|----------------------------|
| 1.23 | Aggregate amount of payments to the parties included in item 1.2 | 28 |
| 1.24 | Aggregate amount of loans to the parties included in item 1.10 | - |

1.25 Explanation necessary for an understanding of the transactions

Directors' fees payments are on normal commercial terms.

Non-cash financing and investing activities

2.1 Details of financing and investing transactions which have had a material effect on consolidated assets and liabilities but did not involve cash flows

During the quarter, the Company issued 600,000,000 fully paid ordinary shares at a deemed issue price of \$0.001 each and 300,000,000 unlisted options exercisable at \$0.003 each expiring 31 December 2020 to acquire 100% of the issued capital of private company Nevada Metals Pty Ltd.

The Company also issued 225,000,000 fully paid ordinary shares to DG Resource Management at a deemed issue price of \$0.001 each as part of the consideration payable under the Mining Claims Acquisition.

The Company also issued 30,000,000 fully paid ordinary shares at a deemed issue price of \$0.001 each and 15,000,000 unlisted options exercisable at \$0.003 each expiring 31 December 2020 to a creditor of the Company for services rendered.

All of the above were approved by shareholders at the Company's General Meeting held on 28 June 2016.

+ See chapter 19 for defined terms.

Appendix 5B

Mining exploration entity and oil and gas exploration entity quarterly report

- 2.2 Details of outlays made by other entities to establish or increase their share in projects in which the reporting entity has an interest

| |
|-----|
| N/A |
|-----|

Financing facilities available

Add notes as necessary for an understanding of the position.

| | Amount available \$A'000 | Amount used \$A'000 |
|---------------------------------|-----------------------------|------------------------|
| 3.1 Loan facilities | - | - |
| 3.2 Credit standby arrangements | - | - |

Estimated cash outflows for next quarter

| | \$A'000 |
|--------------------------------|------------|
| 4.1 Exploration and evaluation | 400 |
| 4.2 Development | - |
| 4.3 Production | - |
| 4.4 Administration | 100 |
| Total | 500 |

Reconciliation of cash

| Reconciliation of cash at the end of the quarter (as shown in the consolidated statement of cash flows) to the related items in the accounts is as follows. | Current quarter \$A'000 | Previous quarter \$A'000 |
|---|----------------------------|-----------------------------|
| 5.1 Cash on hand and at bank | 207 | 514 |
| 5.2 Deposits at call | - | - |
| 5.3 Bank overdraft | - | - |
| 5.4 Other (provide details) | - | - |
| Total: cash at end of quarter (item 1.22) | 207 | 514 |

+ See chapter 19 for defined terms.

Appendix 5B

Mining exploration entity and oil and gas exploration entity quarterly report

Changes in interests in mining tenements and petroleum tenements

| | Tenement reference and location | Nature of interest (note (2)) | Interest at beginning of quarter | Interest at end of quarter |
|-----|---|--|----------------------------------|----------------------------|
| 6.1 | Interests in mining tenements and petroleum tenements relinquished, reduced or lapsed | N/A | | |
| 6.2 | Interests in mining tenements and petroleum tenements acquired or increased | Refer to Annexure A Held by subsidiary Nevada Metals Pty Ltd | - | 100% |

6.3 Interests in mining tenements at end of the quarter

REFER TO ANNEXURE B

Appendix 5B

Mining exploration entity and oil and gas exploration entity quarterly report

Issued and quoted securities at end of current quarter

Description includes rate of interest and any redemption or conversion rights together with prices and dates.

| | Total number | Number quoted | Issue price per security (see note 3) (cents) | Amount paid up per security (see note 3) (cents) |
|--|--|---------------|--|---|
| 7.1 Preference + securities <i>(description)</i> | | | | |
| 7.2 Changes during quarter (a) Increases through issues (b) Decreases through returns of capital, buy-backs, redemptions | | | | |
| 7.3 +Ordinary securities | 3,268,226,117 | 3,268,226,117 | | |
| 7.4 Changes during quarter (a) Increases through issues (b) Decreases through returns of capital, buy-backs | 855,000,000 | 855,000,000 | | |
| 7.5 +Convertible debt securities <i>(description)</i> | - | - | | |
| 7.6 Changes during quarter (a) Increases through issues (b) Decreases through securities matured, converted | | | | |
| 7.7 Options <i>(description and conversion factor)</i> | 19,500,000 306,150,001 1,306,779,921 | - - - | <i>Exercise price</i> \$0.005 \$0.030 \$0.003 | <i>Expiry date</i> 31 Dec 2016 27 Feb 2017 31 Dec 2020 |
| 7.8 Issued during quarter | 756,322,612 | - | \$0.003 | 31 Dec 2020 |
| 7.9 Exercised during quarter | | | | |
| 7.10 Expired during quarter | | | | |
| 7.11 Debentures <i>(totals only)</i> | | | | |
| 7.12 Unsecured notes <i>(totals only)</i> | | | | |

+ See chapter 19 for defined terms.

Appendix 5B Mining exploration entity and oil and gas exploration entity quarterly report

Compliance statement

- 1 This statement has been prepared under accounting policies which comply with accounting standards as defined in the Corporations Act or other standards acceptable to ASX (see note 5).
- 2 This statement does give a true and fair view of the matters disclosed.

Sign here:



(Director/Company secretary)

Date: 29 July 2016

Print name: Keith Bowker

Notes

- 1 The quarterly report provides a basis for informing the market how the entity's activities have been financed for the past quarter and the effect on its cash position. An entity wanting to disclose additional information is encouraged to do so, in a note or notes attached to this report.
- 2 The "Nature of interest" (items 6.1 and 6.2) includes options in respect of interests in mining tenements and petroleum tenements acquired, exercised or lapsed during the reporting period. If the entity is involved in a joint venture agreement and there are conditions precedent which will change its percentage interest in a mining tenement or petroleum tenement, it should disclose the change of percentage interest and conditions precedent in the list required for items 6.1 and 6.2.
- 3 **Issued and quoted securities** The issue price and amount paid up is not required in items 7.1 and 7.3 for fully paid securities.
- 4 The definitions in, and provisions of, *AASB 6: Exploration for and Evaluation of Mineral Resources* and *AASB 107: Statement of Cash Flows* apply to this report.
- 5 **Accounting Standards** ASX will accept, for example, the use of International Financial Reporting Standards for foreign entities. If the standards used do not address a topic, the Australian standard on that topic (if any) must be complied with.

== == == == ==

+ See chapter 19 for defined terms.

ANNEXURE A

Item 6.2 – Interests in mining tenements and petroleum tenements acquired or increased

All tenements below are in the State of Nevada in USA.

Project Name: Lida Valley

| Claim Name/Number | Serial No | Claimant | MER | TWN | RANGE | SEC | SUBDIV | CTY | LOC DATE |
|-------------------|------------|-------------------------|-----|----------|-------|-----|--------|-------|------------|
| LV 1 | NMC1117903 | ARIZONA LITHIUM COMPANY | | 21 0060S | 0420E | | 1 NE | NV009 | 12/21/2015 |
| LV 2 | NMC1117904 | ARIZONA LITHIUM COMPANY | | 21 0060S | 0420E | | 1 NE | NV009 | 12/21/2015 |
| LV 3 | NMC1117905 | ARIZONA LITHIUM COMPANY | | 21 0060S | 0420E | | 1 NE | NV009 | 12/21/2015 |
| LV 4 | NMC1117906 | ARIZONA LITHIUM COMPANY | | 21 0060S | 0420E | | 1 NE | NV009 | 12/21/2015 |
| LV 5 | NMC1117907 | ARIZONA LITHIUM COMPANY | | 21 0060S | 0420E | | 1 NE | NV009 | 12/21/2015 |
| LV 6 | NMC1117908 | ARIZONA LITHIUM COMPANY | | 21 0060S | 0420E | | 1 NE | NV009 | 12/21/2015 |
| LV 7 | NMC1117909 | ARIZONA LITHIUM COMPANY | | 21 0060S | 0420E | | 1 NE | NV009 | 12/21/2015 |
| LV 8 | NMC1117910 | ARIZONA LITHIUM COMPANY | | 21 0060S | 0420E | | 1 NE | NV009 | 12/21/2015 |
| LV 9 | NMC1117911 | ARIZONA LITHIUM COMPANY | | 21 0060S | 0420E | | 1 SE | NV009 | 12/21/2015 |
| LV 10 | NMC1117912 | ARIZONA LITHIUM COMPANY | | 21 0060S | 0420E | | 1 SE | NV009 | 12/21/2015 |
| LV 11 | NMC1117913 | ARIZONA LITHIUM COMPANY | | 21 0060S | 0420E | | 1 SE | NV009 | 12/21/2015 |
| LV 12 | NMC1117914 | ARIZONA LITHIUM COMPANY | | 21 0060S | 0420E | | 1 SE | NV009 | 12/21/2015 |
| LV 13 | NMC1117915 | ARIZONA LITHIUM COMPANY | | 21 0060S | 0420E | | 1 SE | NV009 | 12/21/2015 |
| LV 14 | NMC1117916 | ARIZONA LITHIUM COMPANY | | 21 0060S | 0420E | | 1 SE | NV009 | 12/21/2015 |
| LV 15 | NMC1117917 | ARIZONA LITHIUM COMPANY | | 21 0060S | 0420E | | 1 SE | NV009 | 12/21/2015 |
| LV 16 | NMC1117918 | ARIZONA LITHIUM COMPANY | | 21 0060S | 0420E | | 1 SE | NV009 | 12/21/2015 |
| LV 17 | NMC1117919 | ARIZONA LITHIUM COMPANY | | 21 0060S | 0420E | | 12 NE | NV009 | 12/21/2015 |
| LV 18 | NMC1117920 | ARIZONA LITHIUM COMPANY | | 21 0060S | 0420E | | 12 NE | NV009 | 12/21/2015 |
| LV 19 | NMC1117921 | ARIZONA LITHIUM COMPANY | | 21 0060S | 0420E | | 12 NE | NV009 | 12/21/2015 |
| LV 20 | NMC1117922 | ARIZONA LITHIUM COMPANY | | 21 0060S | 0420E | | 12 NE | NV009 | 12/21/2015 |
| LV 21 | NMC1117923 | ARIZONA LITHIUM COMPANY | | 21 0060S | 0420E | | 12 NE | NV009 | 12/21/2015 |
| LV 22 | NMC1117924 | ARIZONA LITHIUM COMPANY | | 21 0060S | 0420E | | 12 NE | NV009 | 12/21/2015 |
| LV 23 | NMC1117925 | ARIZONA LITHIUM COMPANY | | 21 0060S | 0420E | | 12 NE | NV009 | 12/21/2015 |
| LV 24 | NMC1117926 | ARIZONA LITHIUM COMPANY | | 21 0060S | 0430E | | 6 NW | NV009 | 12/21/2015 |
| LV 25 | NMC1117927 | ARIZONA LITHIUM COMPANY | | 21 0060S | 0430E | | 6 NW | NV009 | 12/21/2015 |
| LV 26 | NMC1117928 | ARIZONA LITHIUM COMPANY | | 21 0060S | 0430E | | 6 NW | NV009 | 12/21/2015 |
| LV 27 | NMC1117929 | ARIZONA LITHIUM COMPANY | | 21 0060S | 0430E | | 6 NW | NV009 | 12/21/2015 |
| LV 28 | NMC1117930 | ARIZONA LITHIUM COMPANY | | 21 0060S | 0430E | | 6 NE | NV009 | 12/21/2015 |
| LV 29 | NMC1117931 | ARIZONA LITHIUM COMPANY | | 21 0060S | 0430E | | 6 NE | NV009 | 12/21/2015 |
| LV 30 | NMC1117932 | ARIZONA LITHIUM COMPANY | | 21 0060S | 0430E | | 6 NE | NV009 | 12/21/2015 |
| LV 31 | NMC1117933 | ARIZONA LITHIUM COMPANY | | 21 0060S | 0430E | | 6 NE | NV009 | 12/21/2015 |

| | | | | | | | |
|--------|------------|-------------------------|----------|-------|------|-------|------------|
| LV 70 | NMC1117972 | ARIZONA LITHIUM COMPANY | 21 0060S | 0430E | 5 SW | NV009 | 12/22/2015 |
| LV 71 | NMC1117973 | ARIZONA LITHIUM COMPANY | 21 0060S | 0430E | 5 SW | NV009 | 12/22/2015 |
| LV 72 | NMC1117974 | ARIZONA LITHIUM COMPANY | 21 0060S | 0430E | 7 NW | NV009 | 12/22/2015 |
| LV 73 | NMC1117975 | ARIZONA LITHIUM COMPANY | 21 0060S | 0430E | 7 NW | NV009 | 12/22/2015 |
| LV 74 | NMC1117976 | ARIZONA LITHIUM COMPANY | 21 0060S | 0430E | 7 NW | NV009 | 12/22/2015 |
| LV 75 | NMC1117977 | ARIZONA LITHIUM COMPANY | 21 0060S | 0430E | 7 NW | NV009 | 12/22/2015 |
| LV 76 | NMC1117978 | ARIZONA LITHIUM COMPANY | 21 0060S | 0430E | 7 NE | NV009 | 12/22/2015 |
| LV 77 | NMC1117979 | ARIZONA LITHIUM COMPANY | 21 0060S | 0430E | 7 NE | NV009 | 12/22/2015 |
| LV 78 | NMC1117980 | ARIZONA LITHIUM COMPANY | 21 0060S | 0430E | 7 NE | NV009 | 12/22/2015 |
| LV 79 | NMC1117981 | ARIZONA LITHIUM COMPANY | 21 0060S | 0430E | 7 NE | NV009 | 12/22/2015 |
| LV 80 | NMC1117982 | ARIZONA LITHIUM COMPANY | 21 0060S | 0430E | 8 NW | NV009 | 12/22/2015 |
| LV 81 | NMC1117983 | ARIZONA LITHIUM COMPANY | 21 0060S | 0430E | 8 NW | NV009 | 12/22/2015 |
| LV 82 | NMC1117984 | ARIZONA LITHIUM COMPANY | 21 0060S | 0430E | 8 NW | NV009 | 12/22/2015 |
| LV 83 | NMC1117985 | ARIZONA LITHIUM COMPANY | 21 0060S | 0430E | 8 NW | NV009 | 12/22/2015 |
| LV 84 | NMC1117986 | ARIZONA LITHIUM COMPANY | 21 0060S | 0430E | 8 NE | NV009 | 12/22/2015 |
| LV 85 | NMC1117987 | ARIZONA LITHIUM COMPANY | 21 0060S | 0430E | 8 NE | NV009 | 12/22/2015 |
| LV 86 | NMC1117988 | ARIZONA LITHIUM COMPANY | 21 0060S | 0430E | 8 NE | NV009 | 12/22/2015 |
| LV 87 | NMC1117989 | ARIZONA LITHIUM COMPANY | 21 0060S | 0430E | 8 NE | NV009 | 12/22/2015 |
| LV 88 | NMC1117990 | ARIZONA LITHIUM COMPANY | 21 0060S | 0430E | 9 NW | NV009 | 12/22/2015 |
| LV 89 | NMC1117991 | ARIZONA LITHIUM COMPANY | 21 0060S | 0430E | 7 NW | NV009 | 12/22/2015 |
| LV 90 | NMC1117992 | ARIZONA LITHIUM COMPANY | 21 0060S | 0430E | 7 NW | NV009 | 12/22/2015 |
| LV 91 | NMC1117993 | ARIZONA LITHIUM COMPANY | 21 0060S | 0430E | 7 NW | NV009 | 12/22/2015 |
| LV 92 | NMC1117994 | ARIZONA LITHIUM COMPANY | 21 0060S | 0430E | 7 NW | NV009 | 12/22/2015 |
| LV 93 | NMC1117995 | ARIZONA LITHIUM COMPANY | 21 0060S | 0430E | 7 NE | NV009 | 12/22/2015 |
| LV 94 | NMC1117996 | ARIZONA LITHIUM COMPANY | 21 0060S | 0430E | 7 NE | NV009 | 12/22/2015 |
| LV 95 | NMC1117997 | ARIZONA LITHIUM COMPANY | 21 0060S | 0430E | 7 NE | NV009 | 12/22/2015 |
| LV 96 | NMC1117998 | ARIZONA LITHIUM COMPANY | 21 0060S | 0430E | 7 NE | NV009 | 12/22/2015 |
| LV 97 | NMC1117999 | ARIZONA LITHIUM COMPANY | 21 0060S | 0430E | 8 NW | NV009 | 12/22/2015 |
| LV 98 | NMC1118000 | ARIZONA LITHIUM COMPANY | 21 0060S | 0430E | 8 NW | NV009 | 12/22/2015 |
| LV 99 | NMC1118001 | ARIZONA LITHIUM COMPANY | 21 0060S | 0430E | 8 NW | NV009 | 12/22/2015 |
| LV 100 | NMC1118002 | ARIZONA LITHIUM COMPANY | 21 0060S | 0430E | 8 NW | NV009 | 12/22/2015 |
| LV 101 | NMC1118003 | ARIZONA LITHIUM COMPANY | 21 0060S | 0430E | 8 NE | NV009 | 12/22/2015 |
| LV 102 | NMC1118004 | ARIZONA LITHIUM COMPANY | 21 0060S | 0430E | 8 NE | NV009 | 12/22/2015 |
| LV 103 | NMC1118005 | ARIZONA LITHIUM COMPANY | 21 0060S | 0430E | 8 NE | NV009 | 12/22/2015 |
| LV 104 | NMC1118006 | ARIZONA LITHIUM COMPANY | 21 0060S | 0430E | 8 NE | NV009 | 12/22/2015 |
| LV 105 | NMC1118007 | ARIZONA LITHIUM COMPANY | 21 0060S | 0430E | 9 NW | NV009 | 12/22/2015 |
| LV 106 | NMC1118008 | ARIZONA LITHIUM COMPANY | 21 0060S | 0430E | 7 SW | NV009 | 12/22/2015 |
| LV 107 | NMC1118009 | ARIZONA LITHIUM COMPANY | 21 0060S | 0430E | 7 SW | NV009 | 12/22/2015 |

| | | | | | | | |
|--------|------------|-------------------------|----------|-------|------|-------|------------|
| LV 108 | NMC1118010 | ARIZONA LITHIUM COMPANY | 21 0060S | 0430E | 7 SE | NV009 | 12/22/2015 |
| LV 109 | NMC1118011 | ARIZONA LITHIUM COMPANY | 21 0060S | 0430E | 7 SE | NV009 | 12/22/2015 |
| LV 110 | NMC1118012 | ARIZONA LITHIUM COMPANY | 21 0060S | 0430E | 7 SE | NV009 | 12/22/2015 |
| LV 111 | NMC1118013 | ARIZONA LITHIUM COMPANY | 21 0060S | 0430E | 7 SE | NV009 | 12/22/2015 |
| LV 112 | NMC1118014 | ARIZONA LITHIUM COMPANY | 21 0060S | 0430E | 8 SW | NV009 | 12/22/2015 |
| LV 113 | NMC1118015 | ARIZONA LITHIUM COMPANY | 21 0060S | 0430E | 8 SW | NV009 | 12/22/2015 |
| LV 114 | NMC1118016 | ARIZONA LITHIUM COMPANY | 21 0060S | 0430E | 8 SW | NV009 | 12/22/2015 |
| LV 115 | NMC1118017 | ARIZONA LITHIUM COMPANY | 21 0060S | 0430E | 8 SW | NV009 | 12/22/2015 |
| LV 116 | NMC1118018 | ARIZONA LITHIUM COMPANY | 21 0060S | 0430E | 8 SE | NV009 | 12/22/2015 |
| LV 117 | NMC1118019 | ARIZONA LITHIUM COMPANY | 21 0060S | 0430E | 8 SE | NV009 | 12/22/2015 |
| LV 118 | NMC1118020 | ARIZONA LITHIUM COMPANY | 21 0060S | 0430E | 8 SE | NV009 | 12/22/2015 |
| LV 119 | NMC1118021 | ARIZONA LITHIUM COMPANY | 21 0060S | 0430E | 8 SE | NV009 | 12/22/2015 |
| LV 120 | NMC1118022 | ARIZONA LITHIUM COMPANY | 21 0060S | 0430E | 9 SW | NV009 | 12/22/2015 |
| LV 121 | NMC1118023 | ARIZONA LITHIUM COMPANY | 21 0060S | 0430E | 7 SE | NV009 | 12/22/2015 |
| LV 122 | NMC1118024 | ARIZONA LITHIUM COMPANY | 21 0060S | 0430E | 7 SE | NV009 | 12/22/2015 |
| LV 123 | NMC1118025 | ARIZONA LITHIUM COMPANY | 21 0060S | 0430E | 8 SW | NV009 | 12/22/2015 |
| LV 124 | NMC1118026 | ARIZONA LITHIUM COMPANY | 21 0060S | 0430E | 8 SW | NV009 | 12/22/2015 |
| LV 125 | NMC1118027 | ARIZONA LITHIUM COMPANY | 21 0060S | 0430E | 8 SW | NV009 | 12/22/2015 |
| LV 126 | NMC1118028 | ARIZONA LITHIUM COMPANY | 21 0060S | 0430E | 8 SW | NV009 | 12/22/2015 |
| LV 127 | NMC1118029 | ARIZONA LITHIUM COMPANY | 21 0060S | 0430E | 8 SE | NV009 | 12/22/2015 |
| LV 128 | NMC1118030 | ARIZONA LITHIUM COMPANY | 21 0060S | 0430E | 8 SE | NV009 | 12/22/2015 |
| LV 129 | NMC1118031 | ARIZONA LITHIUM COMPANY | 21 0060S | 0430E | 8 SE | NV009 | 12/22/2015 |
| LV 130 | NMC1118032 | ARIZONA LITHIUM COMPANY | 21 0060S | 0430E | 8 SE | NV009 | 12/22/2015 |
| LV 131 | NMC1118033 | ARIZONA LITHIUM COMPANY | 21 0060S | 0430E | 9 SW | NV009 | 12/22/2015 |

Project Name: Muddy Mountain

| | | | | | | |
|------------|------|-------|-------------------------|------------|------------|---------|
| NMC1118539 | LODE | MM 1 | ARIZONA LITHIUM COMPANY | NMC1118539 | 12/24/2015 | 2 0 1 6 |
| NMC1118540 | LODE | MM 2 | ARIZONA LITHIUM COMPANY | NMC1118539 | 12/24/2015 | 2 0 1 6 |
| NMC1118541 | LODE | MM 3 | ARIZONA LITHIUM COMPANY | NMC1118539 | 12/24/2015 | 2 0 1 6 |
| NMC1118542 | LODE | MM 4 | ARIZONA LITHIUM COMPANY | NMC1118539 | 12/24/2015 | 2 0 1 6 |
| NMC1118543 | LODE | MM 5 | ARIZONA LITHIUM COMPANY | NMC1118539 | 12/24/2015 | 2 0 1 6 |
| NMC1118544 | LODE | MM 6 | ARIZONA LITHIUM COMPANY | NMC1118539 | 12/24/2015 | 2 0 1 6 |
| NMC1118545 | LODE | MM 7 | ARIZONA LITHIUM COMPANY | NMC1118539 | 12/24/2015 | 2 0 1 6 |
| NMC1118546 | LODE | MM 8 | ARIZONA LITHIUM COMPANY | NMC1118539 | 12/24/2015 | 2 0 1 6 |
| NMC1118547 | LODE | MM 9 | ARIZONA LITHIUM COMPANY | NMC1118539 | 12/24/2015 | 2 0 1 6 |
| NMC1118548 | LODE | MM 10 | ARIZONA LITHIUM COMPANY | NMC1118539 | 12/24/2015 | 2 0 1 6 |
| NMC1118549 | LODE | MM 11 | ARIZONA LITHIUM COMPANY | NMC1118539 | 12/24/2015 | 2 0 1 6 |
| NMC1118550 | LODE | MM 12 | ARIZONA LITHIUM COMPANY | NMC1118539 | 12/24/2015 | 2 0 1 6 |

| | | | | | | |
|------------|------|--------|-------------------------|------------|------------|---------|
| NMC1118627 | LODE | MM 89 | ARIZONA LITHIUM COMPANY | NMC1118539 | 12/30/2015 | 2 0 1 6 |
| NMC1118628 | LODE | MM 90 | ARIZONA LITHIUM COMPANY | NMC1118539 | 12/30/2015 | 2 0 1 6 |
| NMC1118629 | LODE | MM 91 | ARIZONA LITHIUM COMPANY | NMC1118539 | 12/30/2015 | 2 0 1 6 |
| NMC1118630 | LODE | MM 92 | ARIZONA LITHIUM COMPANY | NMC1118539 | 12/30/2015 | 2 0 1 6 |
| NMC1118631 | LODE | MM 93 | ARIZONA LITHIUM COMPANY | NMC1118539 | 12/30/2015 | 2 0 1 6 |
| NMC1118632 | LODE | MM 94 | ARIZONA LITHIUM COMPANY | NMC1118539 | 12/30/2015 | 2 0 1 6 |
| NMC1118633 | LODE | MM 95 | ARIZONA LITHIUM COMPANY | NMC1118539 | 12/30/2015 | 2 0 1 6 |
| NMC1118634 | LODE | MM 96 | ARIZONA LITHIUM COMPANY | NMC1118539 | 12/30/2015 | 2 0 1 6 |
| NMC1118635 | LODE | MM 97 | ARIZONA LITHIUM COMPANY | NMC1118539 | 12/30/2015 | 2 0 1 6 |
| NMC1118636 | LODE | MM 98 | ARIZONA LITHIUM COMPANY | NMC1118539 | 12/30/2015 | 2 0 1 6 |
| NMC1118637 | LODE | MM 99 | ARIZONA LITHIUM COMPANY | NMC1118539 | 12/30/2015 | 2 0 1 6 |
| NMC1118638 | LODE | MM 100 | ARIZONA LITHIUM COMPANY | NMC1118539 | 12/30/2015 | 2 0 1 6 |
| NMC1118639 | LODE | MM 101 | ARIZONA LITHIUM COMPANY | NMC1118539 | 12/30/2015 | 2 0 1 6 |
| NMC1118640 | LODE | MM 102 | ARIZONA LITHIUM COMPANY | NMC1118539 | 12/30/2015 | 2 0 1 6 |
| NMC1118641 | LODE | MM 103 | ARIZONA LITHIUM COMPANY | NMC1118539 | 12/30/2015 | 2 0 1 6 |
| NMC1118642 | LODE | MM 104 | ARIZONA LITHIUM COMPANY | NMC1118539 | 12/30/2015 | 2 0 1 6 |
| NMC1118643 | LODE | MM 105 | ARIZONA LITHIUM COMPANY | NMC1118539 | 12/29/2015 | 2 0 1 6 |
| NMC1118644 | LODE | MM 106 | ARIZONA LITHIUM COMPANY | NMC1118539 | 12/29/2015 | 2 0 1 6 |
| NMC1118645 | LODE | MM 107 | ARIZONA LITHIUM COMPANY | NMC1118539 | 12/29/2015 | 2 0 1 6 |
| NMC1118646 | LODE | MM 108 | ARIZONA LITHIUM COMPANY | NMC1118539 | 12/29/2015 | 2 0 1 6 |
| NMC1118647 | LODE | MM 109 | ARIZONA LITHIUM COMPANY | NMC1118539 | 12/29/2015 | 2 0 1 6 |
| NMC1118648 | LODE | MM 110 | ARIZONA LITHIUM COMPANY | NMC1118539 | 12/29/2015 | 2 0 1 6 |
| NMC1118649 | LODE | MM 111 | ARIZONA LITHIUM COMPANY | NMC1118539 | 12/29/2015 | 2 0 1 6 |
| NMC1118650 | LODE | MM 112 | ARIZONA LITHIUM COMPANY | NMC1118539 | 12/29/2015 | 2 0 1 6 |
| NMC1118651 | LODE | MM 113 | ARIZONA LITHIUM COMPANY | NMC1118539 | 12/27/2015 | 2 0 1 6 |
| NMC1118652 | LODE | MM 114 | ARIZONA LITHIUM COMPANY | NMC1118539 | 12/27/2015 | 2 0 1 6 |
| NMC1118653 | LODE | MM 115 | ARIZONA LITHIUM COMPANY | NMC1118539 | 12/27/2015 | 2 0 1 6 |
| NMC1118654 | LODE | MM 116 | ARIZONA LITHIUM COMPANY | NMC1118539 | 12/27/2015 | 2 0 1 6 |
| NMC1118655 | LODE | MM 117 | ARIZONA LITHIUM COMPANY | NMC1118539 | 12/29/2015 | 2 0 1 6 |
| NMC1118656 | LODE | MM 118 | ARIZONA LITHIUM COMPANY | NMC1118539 | 12/29/2015 | 2 0 1 6 |
| NMC1118657 | LODE | MM 119 | ARIZONA LITHIUM COMPANY | NMC1118539 | 12/27/2015 | 2 0 1 6 |
| NMC1118658 | LODE | MM 120 | ARIZONA LITHIUM COMPANY | NMC1118539 | 12/27/2015 | 2 0 1 6 |
| NMC1118659 | LODE | MM 121 | ARIZONA LITHIUM COMPANY | NMC1118539 | 12/27/2015 | 2 0 1 6 |
| NMC1118660 | LODE | MM 122 | ARIZONA LITHIUM COMPANY | NMC1118539 | 12/27/2015 | 2 0 1 6 |
| NMC1118661 | LODE | MM 123 | ARIZONA LITHIUM COMPANY | NMC1118539 | 12/27/2015 | 2 0 1 6 |
| NMC1118662 | LODE | MM 140 | ARIZONA LITHIUM COMPANY | NMC1118539 | 12/26/2015 | 2 0 1 6 |

ANNEXURE B

Item 6.3 – Interests in mining tenements at the end of the quarter

| Location | Project Name | Tenement # | Ownership | Titleholder |
|-------------------|---------------------|--------------------------------|------------------------------|--------------------------------------|
| Western Australia | Super Nova | E69/3066 | 100% | Caeneus Resources Pty Ltd |
| Western Australia | Pardoo | E45/1866 | <i>Refer to Note 1 below</i> | Segue (Pardoo) Limited |
| Western Australia | Pardoo | E45/4279 | <i>Refer to Note 1 below</i> | Segue (Pardoo) Limited |
| Western Australia | Pardoo | E45/4585 - application | 100% | Applicant – Port Exploration Pty Ltd |
| Western Australia | Pardoo | E45/4490 - application | <i>Refer to Note 1 below</i> | Applicant – Omni Projects Pty Ltd |
| Western Australia | Pardoo | E45/4516 - application | <i>Refer to Note 1 below</i> | Applicant – Omni Projects Pty Ltd |
| Western Australia | Pardoo | E45/4554 - application | <i>Refer to Note 1 below</i> | Applicant – Omni Projects Pty Ltd |
| Western Australia | Pardoo | E45/4671 – application | <i>Refer to Note 1 below</i> | Applicant – Plumridge East Pty Ltd |
| Western Australia | Pardoo | P45/3011 - application | <i>Refer to Note 1 below</i> | Applicant – Plumridge East Pty Ltd |
| Western Australia | Pardoo | P45/3012 - application | <i>Refer to Note 1 below</i> | Applicant – Plumridge East Pty Ltd |
| Western Australia | Mt Dockrell | E80/4994 - application | 100% | Caeneus Resources Pty Ltd |
| Nevada, USA | Lida Valley | <i>As per Annexure A above</i> | 100% | Nevada Metals Pty Ltd |
| Nevada USA | Muddy Mountain | <i>As per Annexure A above</i> | 100% | Nevada Metals Pty Ltd |

Note 1: *Port Exploration entitlement to earn up to 80% via Farm-In Joint Venture Agreement*