



EXCEPTIONAL GOLD GRADES AT GARDEN GULLY

Thundelarra is pleased to announce that assays from hole TGGRC018, which yielded drill chips containing visible gold, confirm high grade gold mineralisation.

Highlight:

- **High grade gold intercept: 7m at 24.5 gpt Au from 11m downhole**
 - including: 1m at 59.7 gpt from 11m
 - and 1m at 101.4 gpt from 13m
- **Repeat assay on the pulp of the 13m-14m sample reported 146.5 gpt Au**

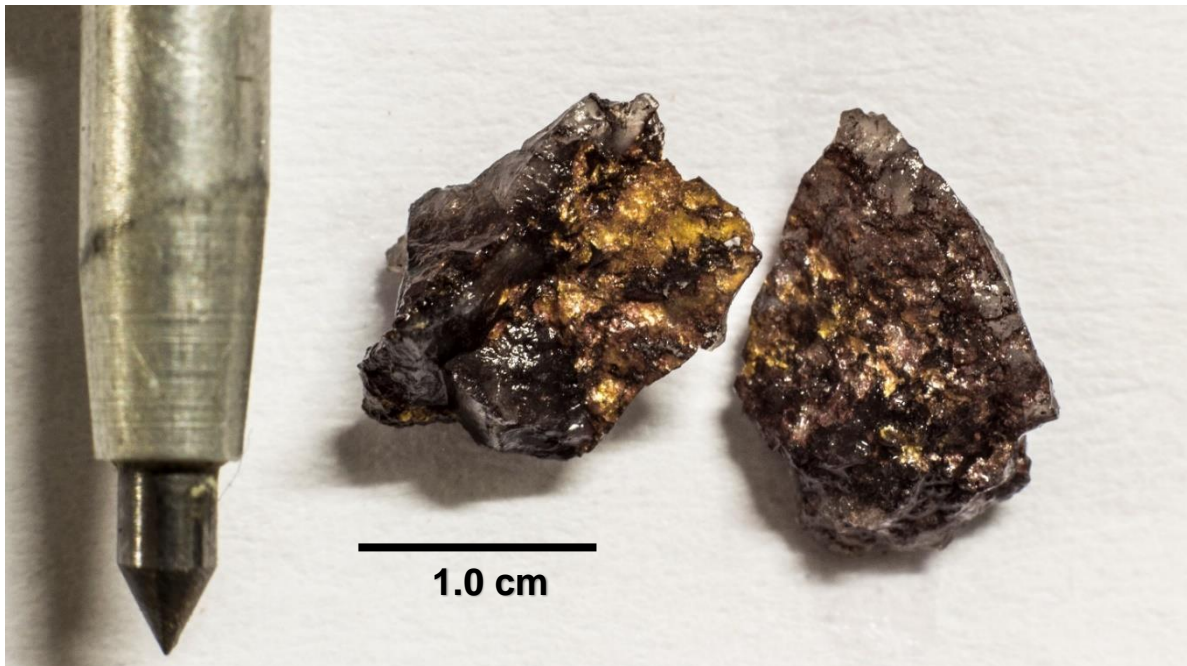


Figure 1. Visible gold in drill chips from Garden Gully project.

Given the high grade and nuggety nature of this mineralisation, Thundelarra personnel have re-sampled the relevant 1m intervals and submitted them for assay as well. The results will hopefully confirm the tenor of the mineralisation and thereby add confidence to the programme,

Assays currently pending include analysis of a suite of multi-elements that will assist in the interpretation of the nature of this mineralisation, which historically has been viewed as standard shear-hosted mineralisation in Archaean greenstone belts.

Upon completion of the programme and receipt of all relevant assay data, targets will be identified for deeper follow-up RC drilling. Exact drill collar locations and assay results from the holes drilled in the initial programme will be reported when all the relevant data has been received.

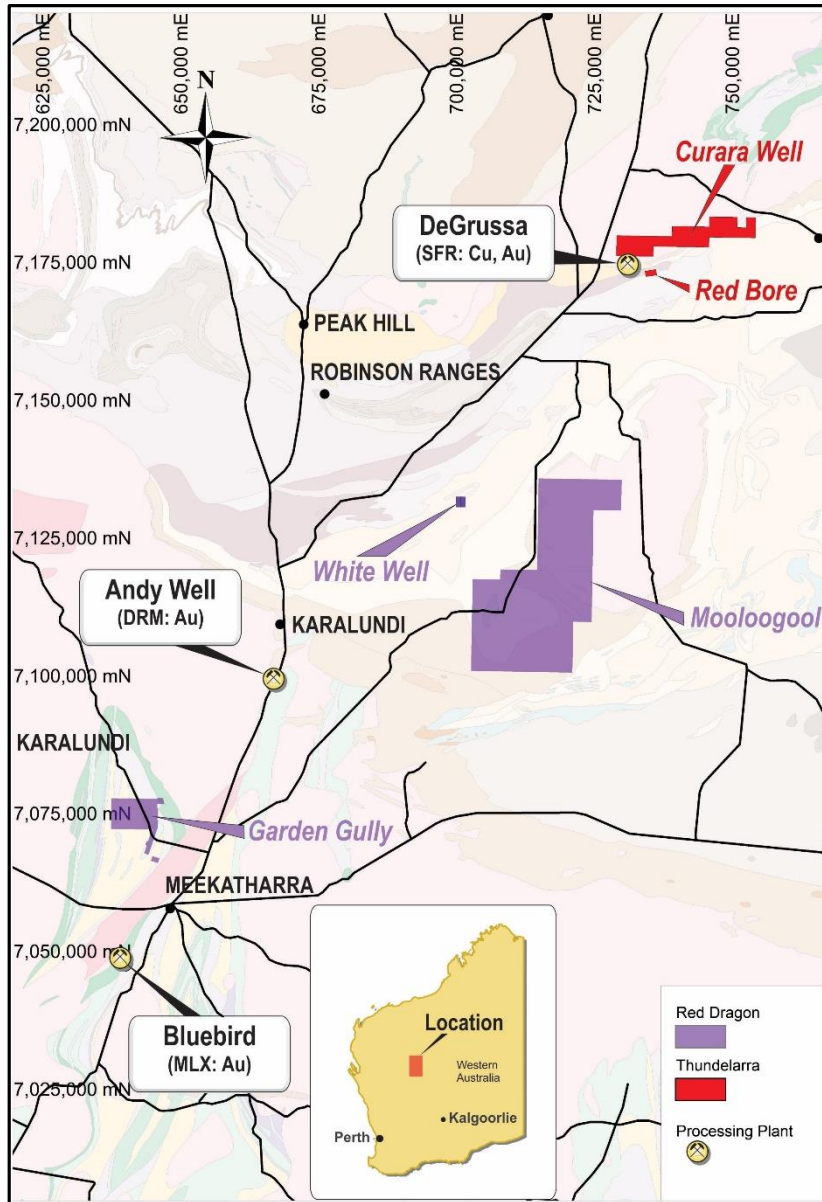


Figure 2. Location map of Garden Gully Project showing proximity to local plants and infrastructure. Scale: grid spacing is 25 km.

Hole TGGRC018 was collared at 644341E, 7070924N and was drilled at -60° dip, 100° azimuth.

For Further Information Contact:
Mr Tony Lofthouse - Chief Executive Officer
+61 8 9389 6927

THUNDELARRA LIMITED
Issued Shares: 423.5M
ASX Code: THX

Competent Person Statement

The details contained in this report that pertain to Exploration Results, Mineral Resources or Ore Reserves, are based upon, and fairly represent, information and supporting documentation compiled by Mr Costica Vieru, a Member of the Australian Institute of Geoscientists and a full-time employee of the Company. Mr Vieru has sufficient experience which is relevant to the style(s) of mineralisation and type(s) of deposit under consideration and to the activity which he is undertaking to qualify as a Competent Person as defined in the 2012 edition of the “Australasian Code for Reporting of Exploration Results, Mineral Resources and Ore Reserves” (JORC Code). Mr Vieru consents to the inclusion in this report of the matters based upon the information in the form and context in which it appears.

Appendix 1: Laboratory assay results: Fire Assay 50g charge after Aqua Regia digest with ICP analysis.

From	To	Width	Au(ppm)
0	5	5	0.23
5	8	3	0.19
8	12	4	0.09
11	12	1	59.69
12	13	1	0.72
13	14	1	101.42
14	15	1	7.57
15	16	1	1.37
16	17	1	0.14
17	18	1	0.52
18	19	1	0.02
19	20	1	0.05
20	21	1	0.06
21	22	1	0.01
22	26	4	0.06
26	30	4	0.17
30	33	3	0.13
33	34	1	0.08
34	38	4	0.00
38	42	4	0.01
42	46	4	0.02
46	50	4	0.02
50	54	4	0.01
54	55	1	0.09
55	59	4	0.03
59	63	4	0.04
63	67	4	0.04
67	68	1	0.02
68	69	1	0.01
69	70	1	0.03
70	71	1	0.03
71	72	1	0.02
72	73	1	0.02
73	74	1	0.03
74	75	1	0.03
75	76	1	0.01
76	77	1	0.02
77	78	1	0.01
78	80	2	0.01
80	81	1	0.01
81	85	4	0.00
85	89	4	0.00
89	93	4	0.00
93	96	3	0.01

Appendix 2: JORC Table 1 Checklist of Assessment and Reporting Criteria

Section 1 Sampling Techniques and Data

(Criteria in this section apply to all succeeding sections.)

Criteria	JORC Code Explanation	Commentary
Sampling techniques	<ul style="list-style-type: none"> Nature and quality of sampling (eg cut channels, random chips, or specific specialised industry standard measurement tools appropriate to the minerals under investigation, such as down-hole gamma sondes, or handheld XRF instruments, etc). These examples should not be taken as limiting the broad meaning of sampling. Include reference to measures taken to ensure sample representivity and the appropriate calibration of any measurement tools or systems used. Aspects of the determination of mineralisation that are material to the Public Report. In cases where 'industry standard' work has been done this would be relatively simple (eg 'reverse circulation drilling was used to obtain 1m samples from which 3 kg was pulverised to produce a 30g charge for fire assay'). In other cases more explanation may be required, such as where there is coarse gold that has inherent sampling problems. Unusual commodities or mineralisation types (eg submarine nodules) may warrant disclosure of detailed information. 	<ul style="list-style-type: none"> RC sample was collected and split in even metre intervals where sample was dry. Wet sample was speared or on occasion scoop-sampled. RC drill chips from each metre were examined visually and logged by the geologist. Evidence of alteration or the presence of mineralisation was noted on the drill logs. Intervals selected by the site geologist were tested by hand-held XRF and those reporting relevant metal content were bagged and numbered for laboratory analysis. Duplicate samples are submitted at a rate of approximately 10% of total samples taken (ie one duplicate submitted for every 10 samples). The Delta XRF Analyser is calibrated before each session and is serviced according to the manufacturer's (Olympus) recommended schedule. The presence or absence of mineralisation is initially determined visually by the site geologist, based on experience and expertise in evaluating the styles of mineralisation being sought.
Drilling techniques	Drill type (eg core, reverse circulation, open-hole hammer, rotary air blast, auger, Bangka, sonic, etc) and details (eg core diameter, triple or standard tube, depth of diamond tails, face-sampling bit or other type, whether core is oriented and if so, by what method, etc).	Narrow diameter reverse circulation drilling using a Gemco H-13 multi-purpose scout drill rig. Mounted on an Isuzu 4x4. 600 cpm plus auxiliary booster.
Drill sample recovery	<ul style="list-style-type: none"> Method of recording and assessing core and chip sample recoveries and results assessed. Measures taken to maximise sample recovery and ensure representative nature of the samples. Whether a relationship exists between sample recovery and grade and whether sample bias may have occurred due to preferential loss/gain of fine/coarse material. 	<ul style="list-style-type: none"> Volume of material collected from each metre interval of drilling completed is monitored visually by the site geologist and field assistants. Dry sample recoveries were estimated at ~95%. Wet sample recovery was lower, estimated to average ~40%. Samples were collected and dry sample split using a riffle splitter. Based on the relatively small number of assays received to date, there is no evidence of either a recovery/grade relationship or of sample bias.
Logging	<ul style="list-style-type: none"> Whether core and chip samples have been geologically and geotechnically logged to a level of detail to support appropriate Mineral Resource estimation, mining studies and metallurgical studies. Whether logging is qualitative or quantitative in nature. Core (or costean, channel, etc) photography. The total length and percentage of the relevant intersections logged. 	<ul style="list-style-type: none"> RC chips are logged visually by qualified geologists. Lithology, and where possible structures, textures, colours, alteration types and minerals estimates, are recorded. Representative chips are retained in chip trays for each metre interval drilled. The entire length of each drillhole is logged and evaluated.
Sub-sampling techniques and sample preparation	<ul style="list-style-type: none"> If core, whether cut or sawn and whether quarter, half or all core taken. If non-core, whether riffled, tube sampled, rotary split, etc and whether sampled wet or dry. For all sample types, the nature, quality and appropriateness of the sample preparation technique. Quality control procedures adopted for all sub-sampling stages to maximise representivity of samples. Measures taken to ensure that the sampling is representative of the in situ material collected, including for instance results for field duplicate/second-half sampling. Whether sample sizes are appropriate to the grain size of the material being sampled. 	<ul style="list-style-type: none"> RC samples were collected and dry sample split using a riffle splitter. Material too moist for effective riffle splitting was sampled using a 4cm diameter spear. Sample submitted to the laboratory comprised three spear samples in different directions into the material for each metre interval. The samples were sent to Nagrom in Perth for Au analysis by FA50 (Fire Assay on 50g charge). Sample preparation techniques are well-established standard industry best practice techniques. Drill chips and core are dried, crushed and pulverised (whole sample) to 95% of the sample passing -75µm grind size. Field QC procedures include using certified reference materials as assay standards. One duplicate sample is submitted for every 15 samples, approximately.

		<ul style="list-style-type: none"> • Evaluation of the standards, blanks and duplicate samples assays appears to be falling within acceptable limits of variability. More certainty can be derived when all assays have been received. • Sample representivity and possible relationship between grain size and grade are being checked by re-sampling the relevant intervals and resubmitting new samples for assay. • Sample size follows industry standard best practice and is considered appropriate for these style(s) of mineralisation.
Quality of assay data and laboratory tests	<ul style="list-style-type: none"> • The nature, quality and appropriateness of the assaying and laboratory procedures used and whether the technique is considered partial or total. • For geophysical tools, spectrometers, handheld XRF instruments, etc, the parameters used in determining the analysis including instrument make and model, reading times, calibrations factors applied and their derivation, etc. • Nature of quality control procedures adopted (eg standards, blanks, duplicates, external laboratory checks) and whether acceptable levels of accuracy (ie lack of bias) and precision have been established. 	<ul style="list-style-type: none"> • The assay techniques used for these assays are international standard and can be considered total. Samples were dried, crushed and pulverised to 95% passing -75µm and assayed for gold by 50g Fire Assay following an aqua regia digest, with digest solution analysed by ICP. • The handheld XRF equipment used is an Olympus Delta XRF Analyser and Thundelarra follows the manufacturer's recommended calibration protocols and usage practices but does not consider XRF readings sufficiently robust for public reporting. Thundelarra uses the handheld XRF data as an indicator to support the selection of intervals for submission to laboratories for formal assay. • The laboratory that carried out the assays is an AQIS registered site and is ISO certified. It conducts its own internal QA/QC processes in addition to the QA/QC implemented by Thundelarra in the course of its sample submission procedures. Evaluation of the relevant data indicates satisfactory performance of the field sampling protocols in place and of the assay laboratory. The laboratory uses check samples and assay standards to complement the duplicate sampling procedures practiced by Thundelarra.
Verification of sampling and assaying	<ul style="list-style-type: none"> • The verification of significant intersections by either independent or alternative company personnel. • The use of twinned holes. • Documentation of primary data, data entry procedures, data verification, data storage (physical and electronic) protocols. • Discuss any adjustment to assay data. 	<ul style="list-style-type: none"> • All significant intersections are calculated and verified on screen and are reviewed by the CEO prior to reporting. • The programme included no twin holes. • Data is collected and recorded initially on hand-written logs with summary data subsequently transcribed in the field to electronic files that are then copied to head office. • No adjustment to assay data has been needed.
Location of data points	<ul style="list-style-type: none"> • Accuracy and quality of surveys used to locate drill holes (collar and down-hole surveys), trenches, mine workings and other locations used in Mineral Resource estimation. • Specification of the grid system used. • Quality and adequacy of topographic control. 	<ul style="list-style-type: none"> • Collar locations were located and recorded using hand-held GPS (Garmin 62S model) with a typical accuracy of ±5m. Due to the short hole length and scout drilling nature of the programme, the only down-hole survey carried out is the dip at the end of the hole. No down-hole azimuth measured. • The map projection applicable to the area is Australian Geodetic GDA94, Zone 50. • Topographic control is based on standard industry practice of using the GPS readings. Local topography is relatively flat. Detailed altimetry is not warranted.
Data spacing and distribution	<ul style="list-style-type: none"> • Data spacing for reporting of Exploration Results. • Whether the data spacing and distribution is sufficient to establish the degree of geological and grade continuity appropriate for the Mineral Resource and Ore Reserve estimation procedure(s) and classifications applied. • Whether sample compositing has been applied. 	<p>Not applicable: this announcement reports the assays from a single hole. Assays from the other holes in the programme are not yet received.</p> <p>Four metre composite sampling was applied to the hole. Zones where geological logging and/or XRF analyses indicated the presence of mineralised intervals were sample on one metre intervals.</p>
Orientation of data in relation to geological structure	<ul style="list-style-type: none"> • Whether the orientation of sampling achieves unbiased sampling of possible structures and the extent to which this is known, considering the deposit type. • If the relationship between the drilling orientation and the orientation of key mineralised structures is considered 	<p>Not applicable: this announcement reports the assays from a single hole. Insufficient geological data exists yet to be able to establish true widths, orientation of lithologies, relationships between lithologies, or the nature of any structural controls.</p>

	to have introduced a sampling bias, this should be assessed and reported if material.	
Sample security	<ul style="list-style-type: none"> The measures taken to ensure sample security. 	<ul style="list-style-type: none"> When all relevant intervals have been sampled, the samples are collected and transported by Company personnel to secure locked storage in Perth before delivery by Company personnel to the laboratory for assay.
Audits or reviews	<ul style="list-style-type: none"> The results of any audits or reviews of sampling techniques and data. 	Not applicable. Assays not yet received.

Section 2 Reporting of Exploration Results

(Criteria listed in the preceding section also apply to this section.)

Criteria	JORC Code Explanation	Commentary
Mineral tenement and land tenure status	<ul style="list-style-type: none"> Type, reference name/number, location and ownership including agreements or material issues with third parties such as joint ventures, partnerships, overriding royalties, native title interests, historical sites, wilderness or national park and environmental settings. The security of the tenure held at the time of reporting along with any known impediments to obtaining a licence to operate in the area. 	<ul style="list-style-type: none"> The Garden Gully project comprises fourteen granted prospecting licences P51/2909, P51/2910, P51/2911, P51/2912, P51/2913, P51/2914, P51/2760, P51/2761, P51/2762, P51/2763, P51/2764, P51/2765, P51/2941, P51/2948 and one granted exploration licence E51/1661, totalising approximately 65.5 square kilometres in area. THX holds a 100% interest in each lease. The project is partially located in the Yoothapina pastoral lease, 15km north of Meekatharra, in the Murchison of WA. The licences are in good standing and there are no known impediments to obtaining a licence to operate.
Exploration done by other parties	<ul style="list-style-type: none"> Acknowledgment and appraisal of exploration by other parties. 	<ul style="list-style-type: none"> First workings in the Garden Gully area: 1895 - 1901 with the Crown gold mine. 264 tonnes gold at 1.99 oz/t average (~ 56 g/t Au). Maximum depth~24m. Kyarra gold mine (1909 – 1917): 18,790 oz gold from quartz veins in “strongly sheared, decomposed, sericite rich country rock”. Seltrust explored for Copper and Zinc from 1977, reporting stratigraphically controlled “gossanous” rock from chip sampling and drilling. In 1988, Dominion gold exploration at Crown defined a >100ppb gold soil anomaly. RAB to 32m: “no significant mineralisation”: drilling was “sub-parallel to the dip of mineralisation”. Best intersection: 15m at 2.38g/t from 5m. 1989 at Lydia: Julia Mines RAB drilled 30 m intervals 100m apart across the shear zone targeting the arsenic anomaly. 12m at 5.16 g/t Au from 18m; 6m at 3.04 g/t Au from 18m. No samples deeper than 24m due to poor recovery, so open at depth in the prospective shear zone. Julia also drilled shallow aircore at Crown mine, returned best intersection of 2m at 0.4g/t Au from 34m in quartz veins in felsic volcanics. In 1989, Matlock Mining explored North Granite Well and Nineteenth Hole. Best result 8m at 2.1 g/t Au. Supergene zone: grades to 3.17 g/t Au and still open. 1993 – 2003: St Barbara Mines: RAB, RC on E51/1661. Gold associated with black shale (best: 1m at 0.64 g/t). 1996, Australian Gold Resources RAB and RC drilling found Cu, Zn and Ag anomalies (up to 1800ppm Cu, 1650ppm Zn and 3.8 g/t Ag) associated with saprolitic clay and black shales at 60-80m deep on current E51/1661. 2001-2002, Gamen (Bellissimo & Red Bluff Noms) trenched, sampled, mapped and RC drilled at Crown. Results (up to 0.19 g/t Au) suggests the presence of gold mineralisation further to the east of Crown gold mine. 2008 – 2009: Accent defined targets N and S of Nineteenth Hole from satellite imagery and airborne magnetics.
Geology	<ul style="list-style-type: none"> Deposit type, geological setting and style of mineralisation. 	<ul style="list-style-type: none"> The Garden Gully project lies on the south-eastern limb of the Abbots Greenstone Belt; comprised of Archaean rocks of the Greensleeves Formation (Formerly Gabanintha); a bimodal succession of komatiitic volcanic mafics and

		<p>ultramafics overlain by felsic volcanics and volcanoclastic sediments, black shales and siltstones and interlayered with mafic to ultramafic sills. Regional synclinal succession trending N-NE with a northern fold closure postdating E-W synform, further transected by NE trending shear zones, linearity with the NE trend of the Abernathy Shear, which is a proven regional influence on structurally controlled gold emplacement in Abbots and Meekatharra Greenstone Belts and in the Meekatharra Granite and associated dykes.</p> <p>- The Project is blanketed by broad alluvial flats, occasional lateritic duricrust and drainage channels braiding into the Garden Gully Drainage System. Bedrock exposures are limited to areas of dolerite, typically massive and unaltered. Small basalt and metasediment outcrops exist, with some exposures of gossanous outcrops and quartz vein scree. Gold bearing quartz reefs, veins and lodes occur almost exclusively as siliceous impregnations into zones within the Kyarra Schist Series, schistose derivatives of dolerites, gabbros and tuffs, typically occurring close to axial planes of folds and within anastomosing ductile shear zones.</p>
Drill hole Information	<ul style="list-style-type: none"> A summary of all information material to the understanding of the exploration results including a tabulation of the following information for all material drill holes: <ul style="list-style-type: none"> easting and northing of the drill hole collar elevation or RL (Reduced Level – elevation above sea level in metres) of the drill hole collar dip and azimuth of the hole down hole length and interception depth hole length. If the exclusion of this information is justified on the basis that the information is not material and this exclusion does not detract from the understanding of the report, the Competent Person should clearly explain why this is the case. 	This announcement relates to one drillhole only, details of which are recorded in the body of the report.
Data aggregation methods	<ul style="list-style-type: none"> In reporting Exploration Results, weighting averaging techniques, maximum and/or minimum grade truncations (eg cutting of high grades) and cut-off grades are usually material and should be stated. Where aggregate intercepts incorporate short lengths of high grade results and longer lengths of low grade results, the procedure used for such aggregation should be stated and some typical examples of such aggregations should be shown in detail. The assumptions used for any reporting of metal equivalent values should be clearly stated. 	<ul style="list-style-type: none"> All summary information is presented in Table 1. Full assay data are available in Appendix 1. Arithmetic weighted averages are used. For example, 11m to 18m in TGGRC118 is reported as 7m at 24.5gpt Au. This comprised 7 samples, each of 1m, calculated as follows: $[(1*59.7)+(1*0.7)+(1*101.4)+(1*7.6)+(1*1.4)+(1*0.1)+(1*0.5)] = [171.4/7] = 24.9\text{gpt Au}$. No metal equivalent values are used.
Relationship between mineralisation widths and intercept lengths	<ul style="list-style-type: none"> These relationships are particularly important in the reporting of Exploration Results. If the geometry of the mineralisation with respect to the drill hole angle is known, its nature should be reported. If it is not known and only the down hole lengths are reported, there should be a clear statement to this effect (eg 'down hole length, true width not known'). 	Not applicable. These results refer to a single hole. True widths are unknown and insufficient information is available yet to permit interpretation of geometry.
Diagrams	<ul style="list-style-type: none"> Appropriate maps and sections (with scales) and tabulations of intercepts should be included for any significant discovery being reported. These should include, but not be limited to, a plan view of drill hole collar locations and appropriate sectional views. 	<ul style="list-style-type: none"> Relevant location maps and figures are included in the body of this announcement.
Balanced reporting	<ul style="list-style-type: none"> Where comprehensive reporting of all Exploration Results is not practicable, representative reporting of both low and high grades and/or widths should be practiced to avoid misleading reporting of Exploration Results. 	<ul style="list-style-type: none"> This announcement includes the results of all Au assays for this one hole. The reporting is comprehensive and thus by definition balanced. It represents initial results of a larger programme to investigate the possible mineralisation at Garden Gully.
Other substantive	<ul style="list-style-type: none"> Other exploration data, if meaningful and material, should be reported including, but not limited to: geological 	Not applicable. This announcement relates only to a single drillhole.

<p>exploration data</p>	<p>observations; geophysical survey results; geochemical survey results; bulk samples – size and method of treatment; metallurgical test results; bulk density; groundwater, geotechnical and rock characteristics; potential deleterious or contaminating substances.</p>	
<p>Further work</p>	<ul style="list-style-type: none"> • The nature and scale of planned further work (eg tests for lateral extensions or depth extensions or large-scale step-out drilling). • Diagrams clearly highlighting the areas of possible extensions, including the main geological interpretations and future drilling areas, provided this information is not commercially sensitive. 	<ul style="list-style-type: none"> • Completion of the current drilling programme and receipt of assay result will dictate the exact nature of any follow-up programmes. It is anticipated that it will include deeper RC drill testing to evaluate the anomalies and new targets identified from the current drilling programme.

---0000---