

*Sourcing the
raw materials
of the future*

ASX: SYA

SAYONA
MINING LIMITED
OCTOBER 2016

Investor Presentation
**Charging Ahead At The
Authier Lithium Project**

SYA Value Proposition



Advanced, de-risked project - simple mining and well-tested metallurgy, and access to infrastructure



Executing a plan to get into **production and generate cash flow**



Low enterprise value compared to industry peers



Board and management team have **track record of delivering projects**

Catalysts for Share Price Re-rating



Authier drilling

- Potential to expand JORC Resources
- Upgrading resource categories
- Exploration potential



Authier JORC Resource upgrade



Authier pre-feasibility study

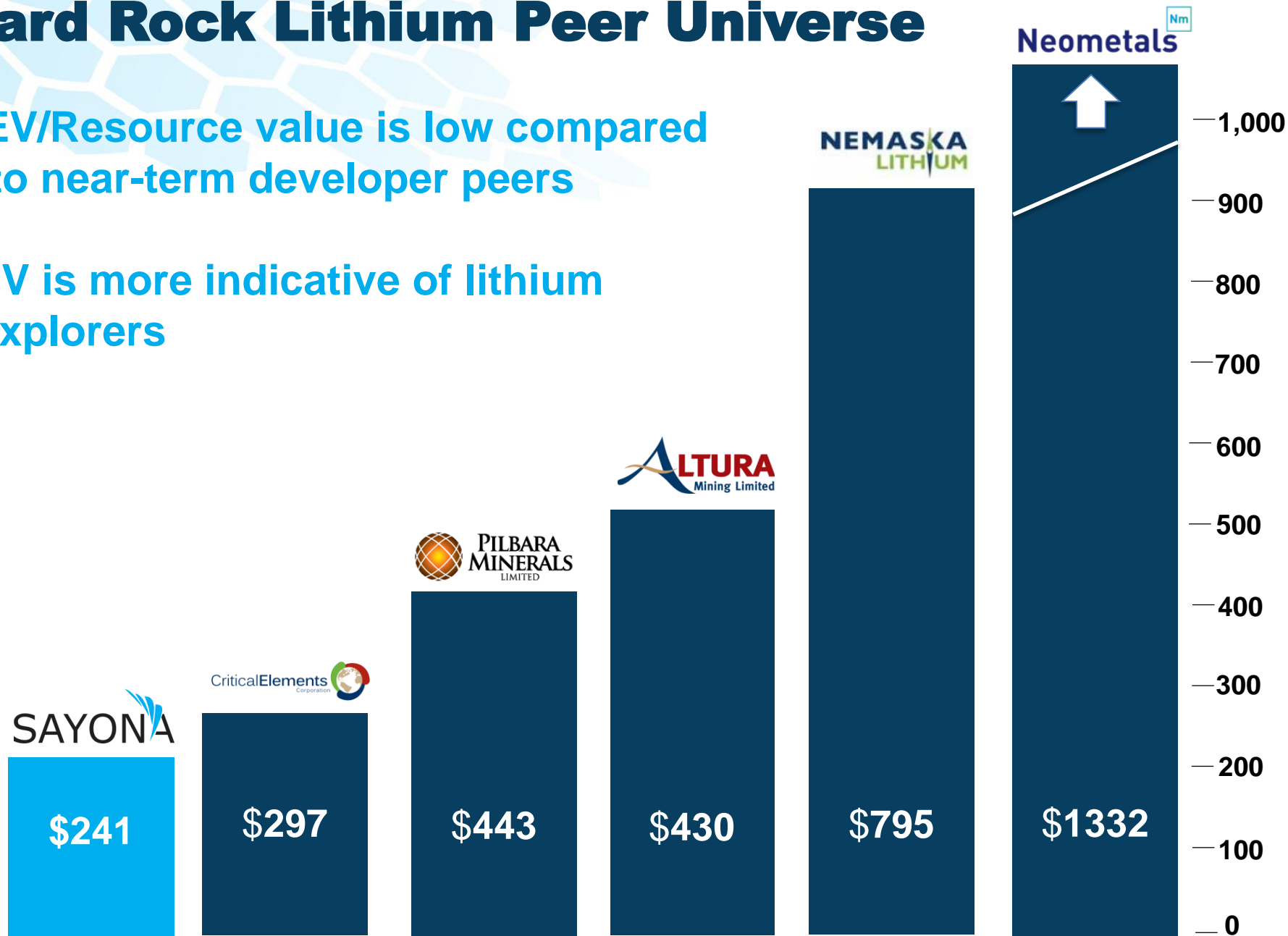
- Project economics
- Timeline to production
- Pathway to offtake and construction finance



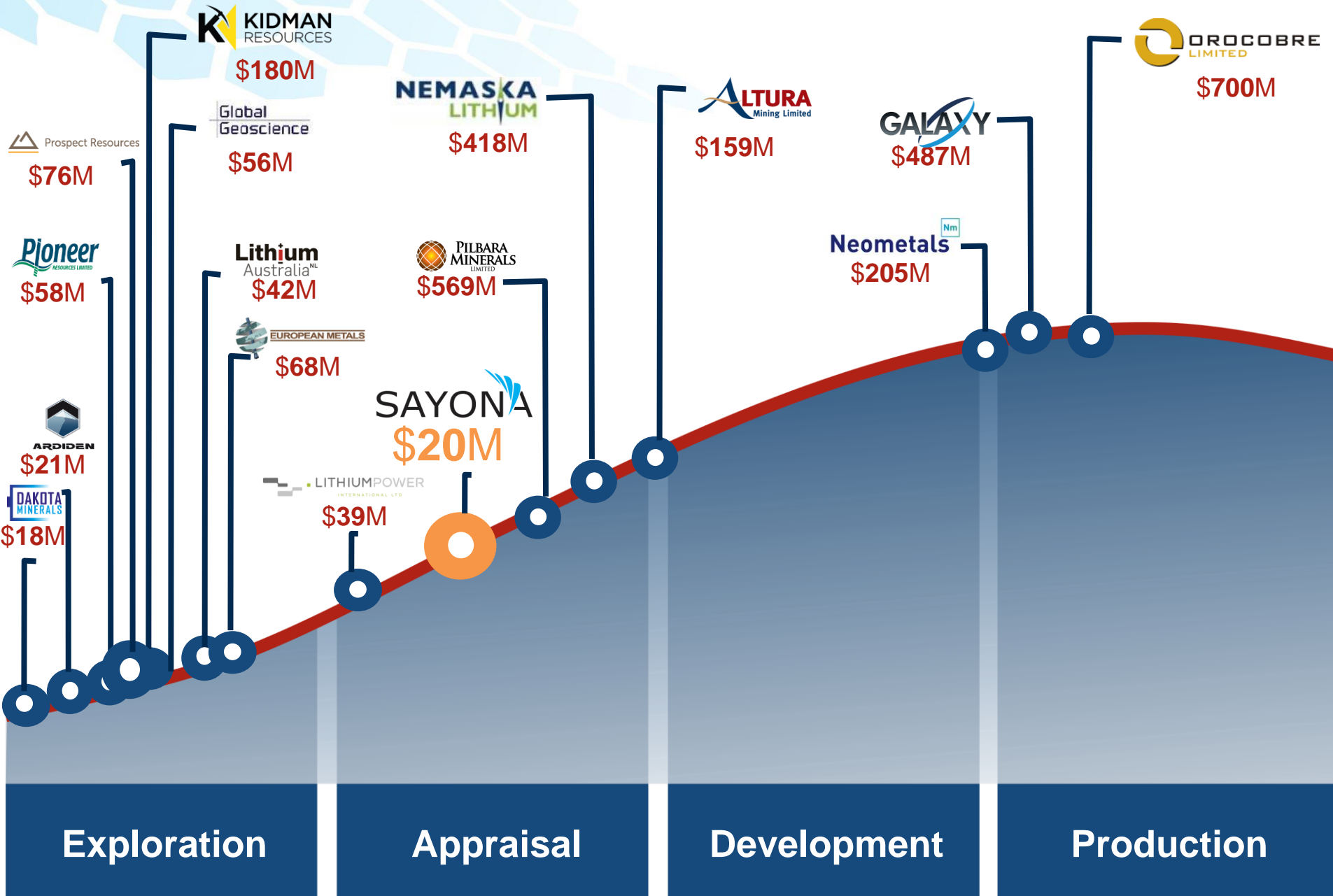
Western Australian lithium and graphite exploration

Hard Rock Lithium Peer Universe

- EV/Resource value is low compared to near-term developer peers
- EV is more indicative of lithium explorers



Authier Value Up-lift Potential



Exploration

Appraisal

Development

Production



PROJET AUTHIER LITHIUM

WWW.GLENEAGLERESOURCES.COM

Nous ne sommes pas responsables des accidents.

PROJET GÉRÉ PAR:



WWW.SERVICESGFE.CA

1 877 727 4080

Sayona's Corporate Strategy

Key drivers of the **Green Energy Revolution**



Environmental

Reducing reliance on fossil fuels



Economics

Traditional power generation networks costly and inefficient



Self Sufficiency

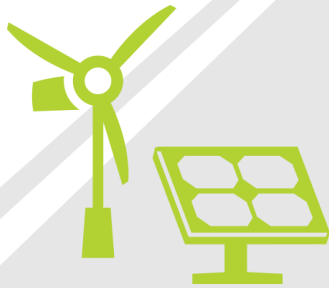
Improved economics of Li-ion batteries

The way we **Generate, Use, Distribute and Store** energy changing



Creating demand for **Lithium and Graphite** for use in batteries

The Company's strategy is to **change the world and power the future** by sourcing and developing the raw materials essential for lithium-ion battery production

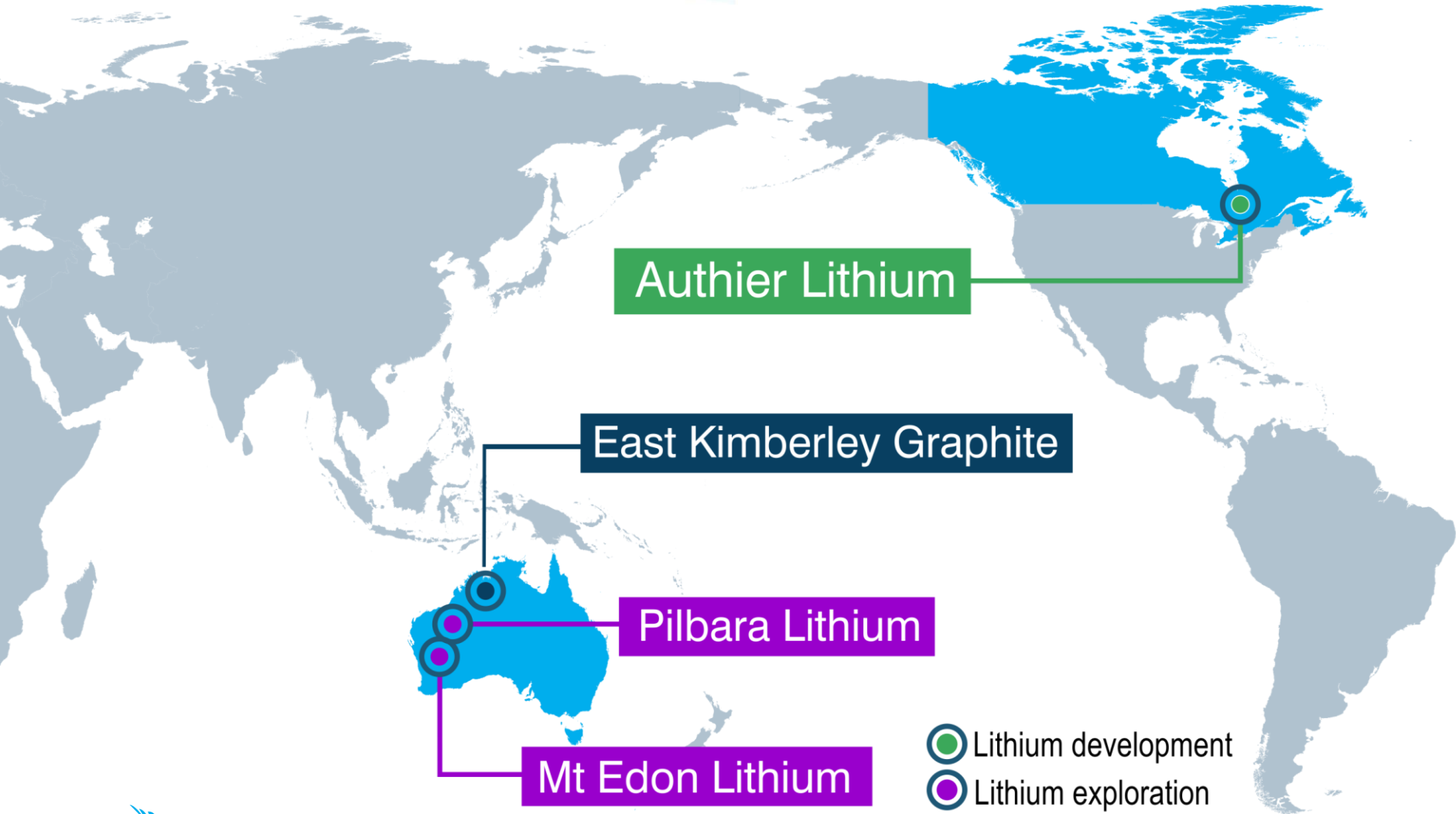


Project Portfolio

Lithium



Graphite



Authier Lithium

East Kimberley Graphite

Pilbara Lithium

Mt Edon Lithium

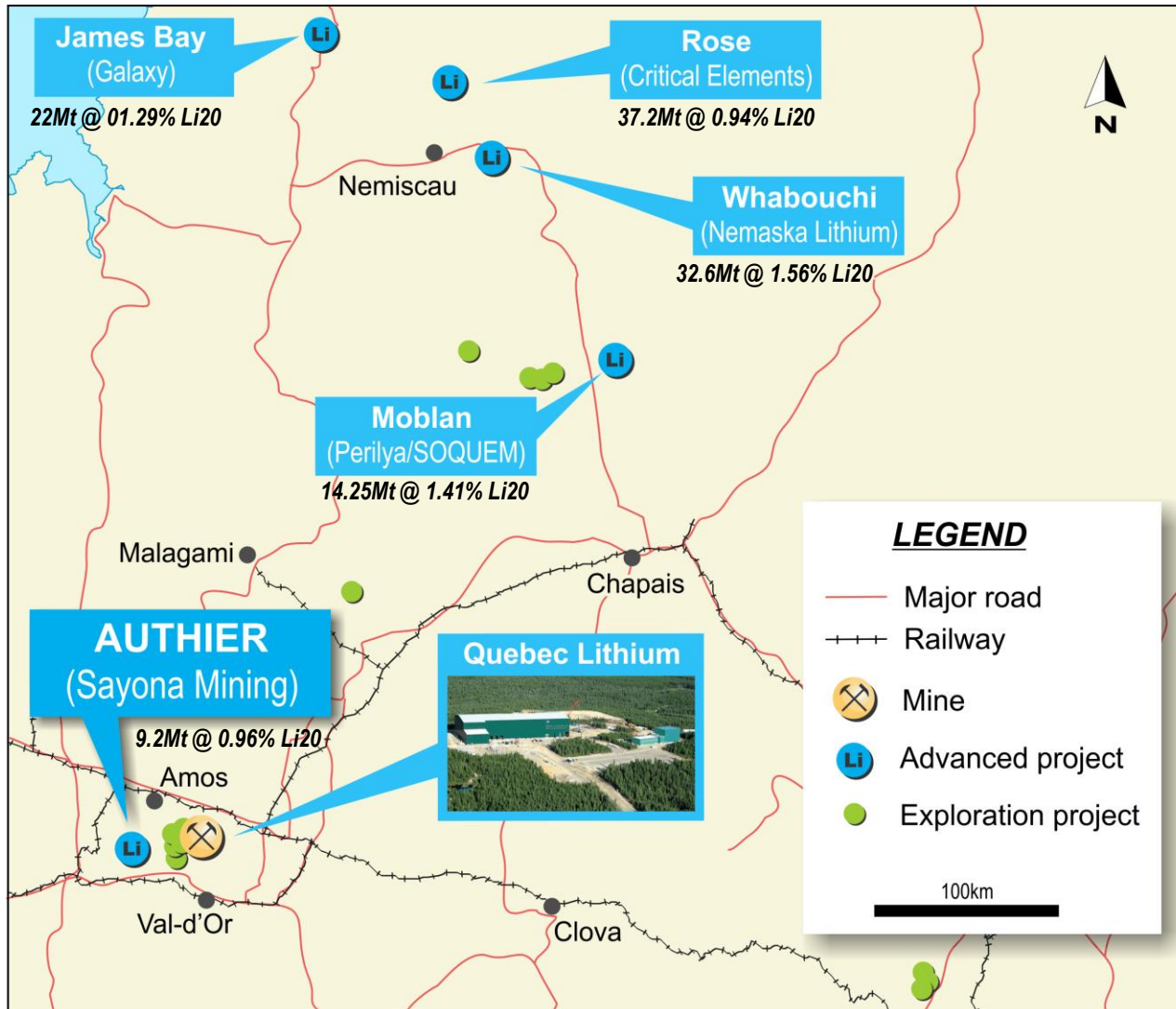
- Lithium development
- Lithium exploration
- Graphite exploration



Authier Lithium Project Overview

Quebec, Canada

A globally significant region for lithium deposits but development infrastructure a major constraint



Quebec has a well developed & Government supported mining industry

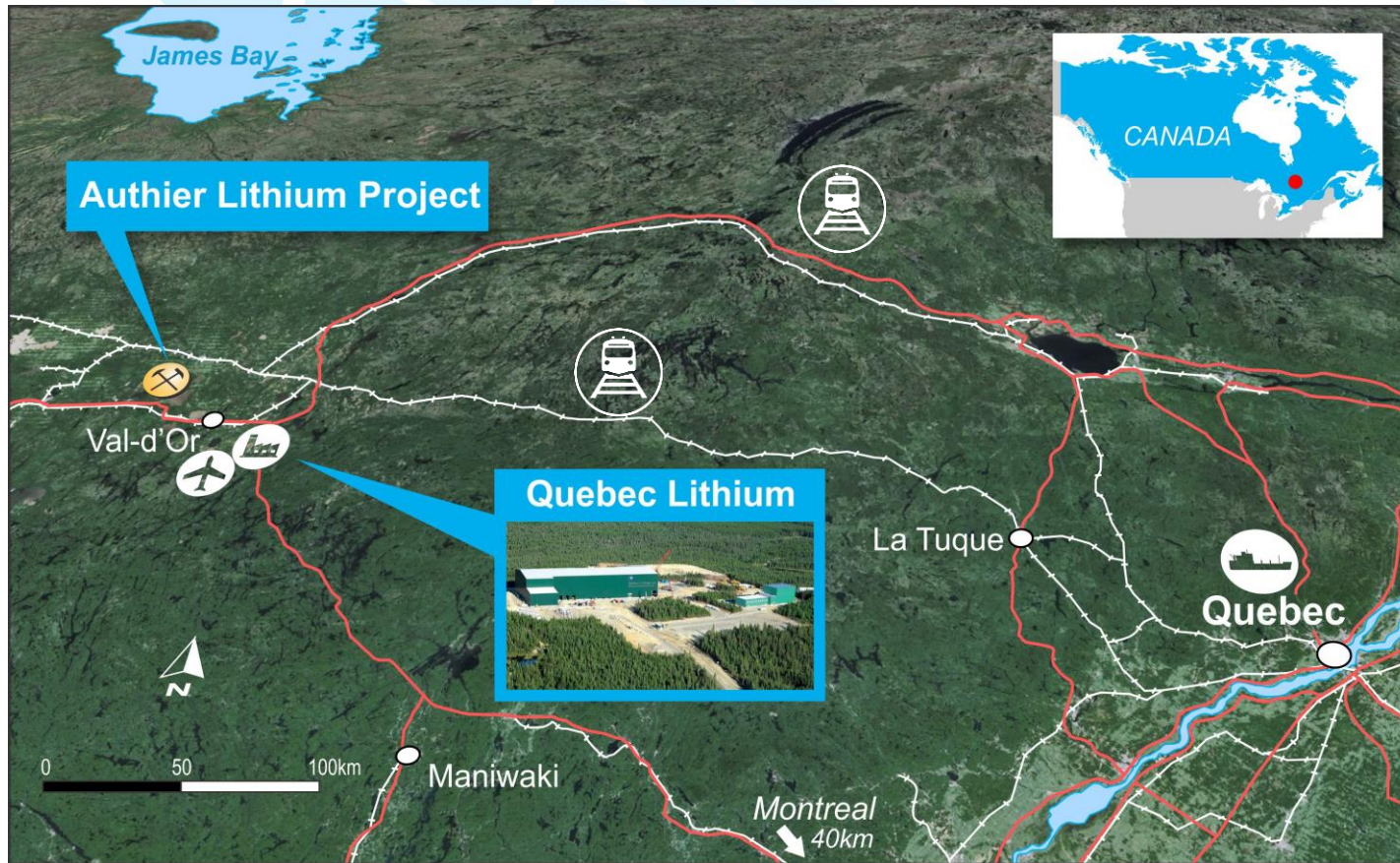
TOP rated mining jurisdiction by Fraser Institute (no. 6 in world)

Host to a number of large high-grade Lithium deposits

Most projects infrastructure and transport logistics constrained – require capital intensive lithium carbonate plants

Authier Infrastructure

Well established development infrastructure



Excellent Infrastructure

Low cost **hydro power**
Road and rail access
Experienced **local mining workforce**

653 ha
tenement package

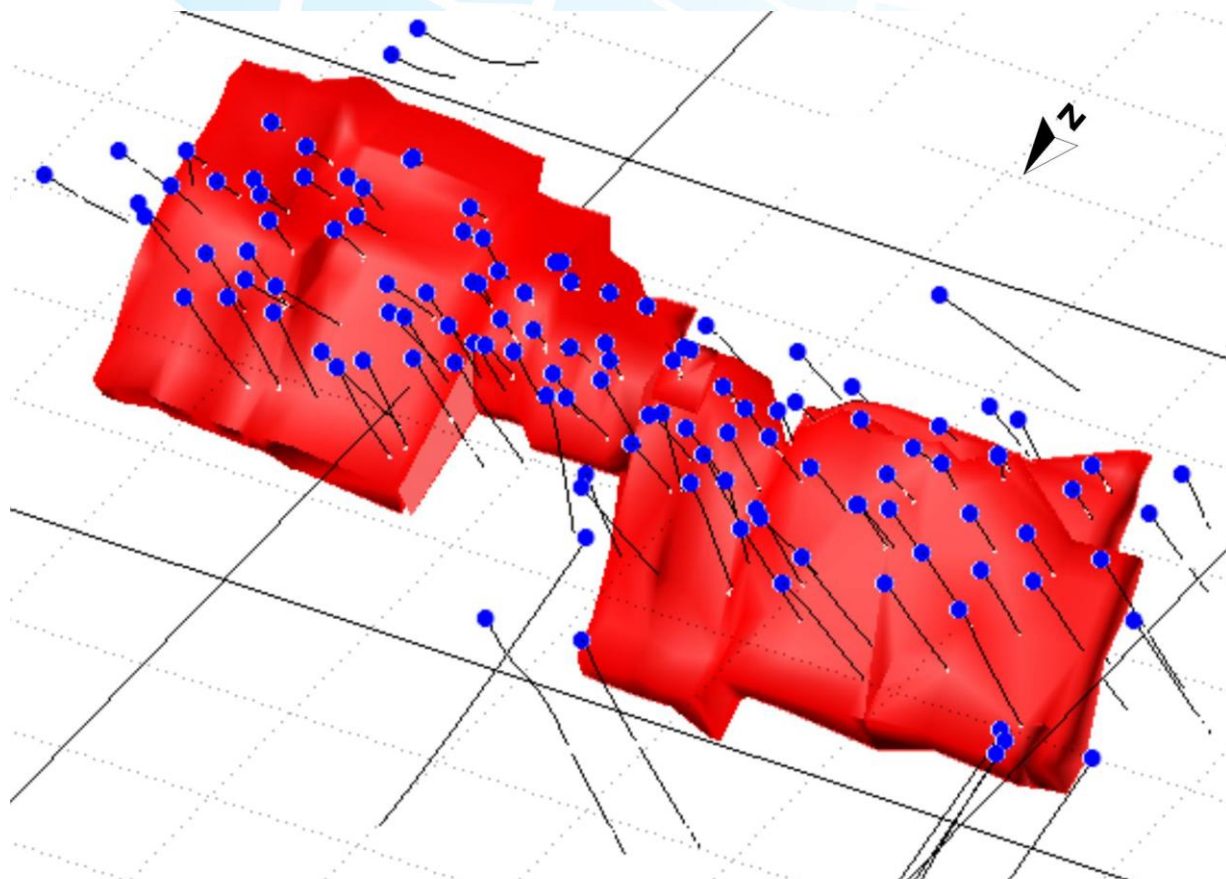
Located in a major mining district

50km by road to the Quebec Lithium Plant



Authier Lithium Deposit

Extensively drilled



15,000m
drilled

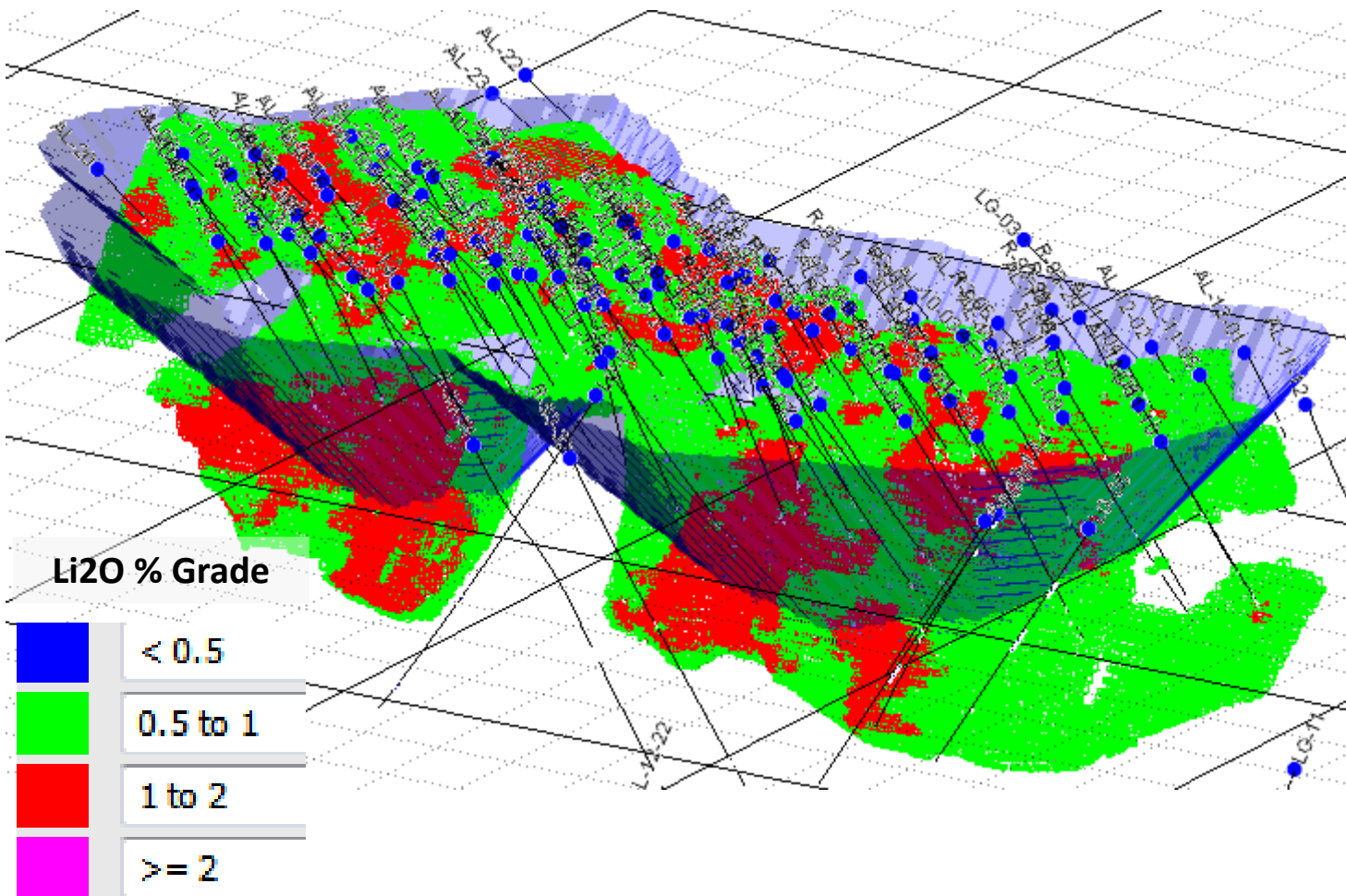
123
holes

2,143
lithium assays



Authier Lithium Deposit Pit Contour

Simple deposit geometry



Authier Deposit

825m long
25m average width

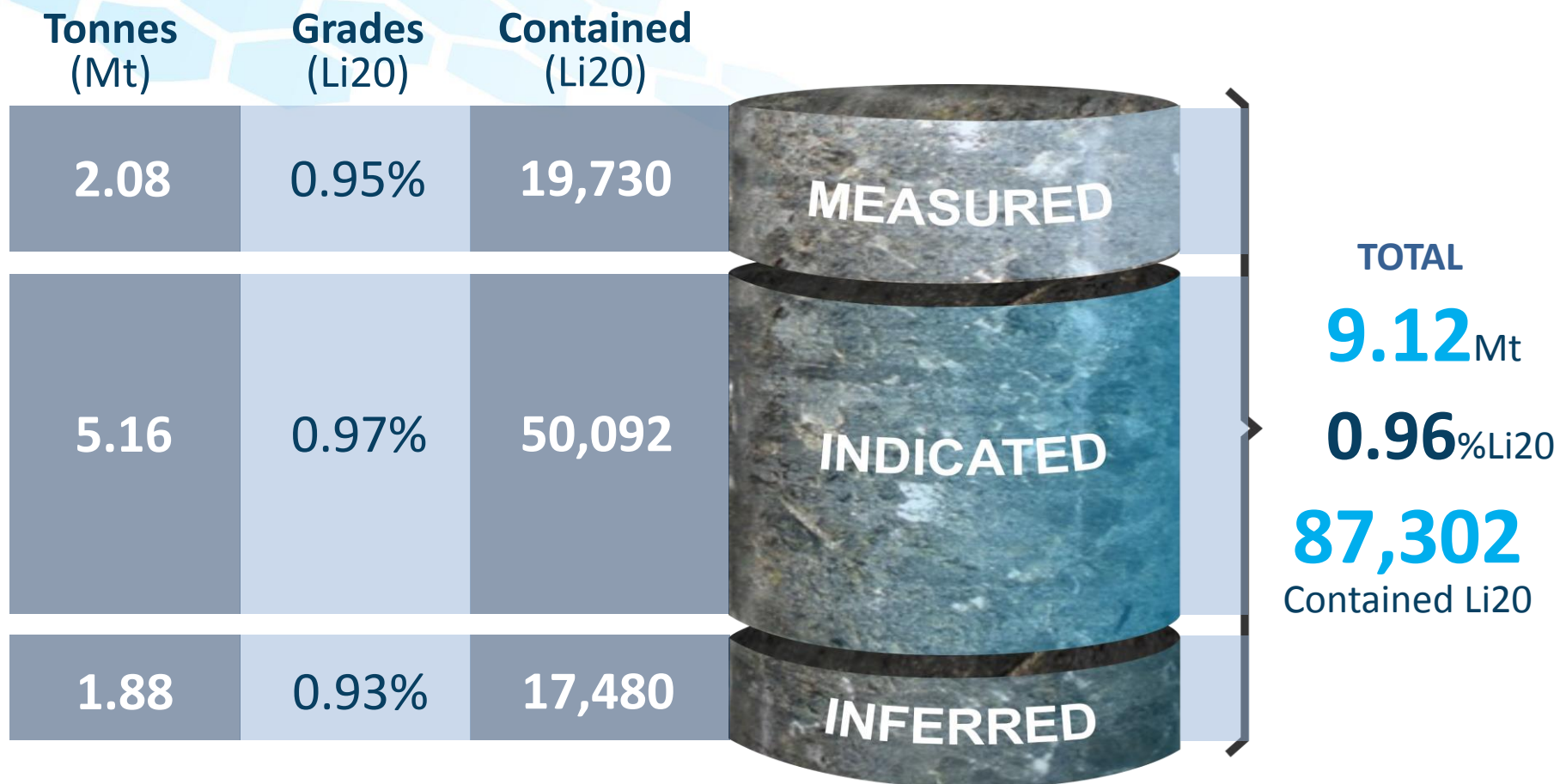
200m deep and
still open

Well studied

NI43-101
completed in 2013

Commercial and
technical viability
confirmed

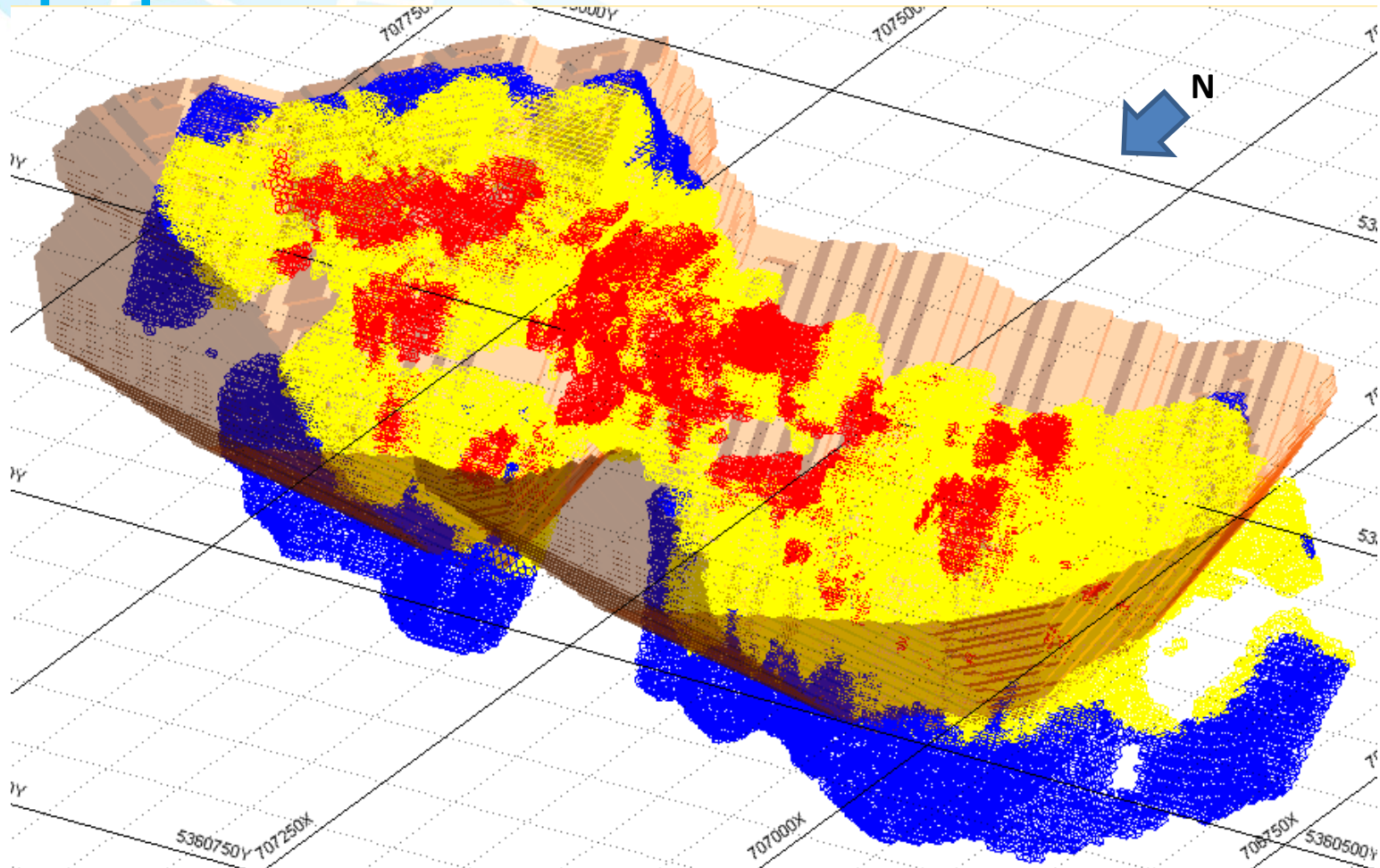
Authier JORC Mineral Resource



- 0.5% Li₂O cut-off grade*
- Cautionary Note - Mineral Resources are not Mineral Reserves and do not have demonstrated economic viability. There is no certainty that all or any part of the Mineral Resources estimated will be converted into Mineral Reserves estimate
- The resource has been estimated and reported in accordance with the guidelines of the Australasian Code for the Reporting of Exploration Results, Mineral Resources and Ore Reserves (JORC Code 2012).

Authier Deposit Resource Distribution

High proportion of measured and indicated resources



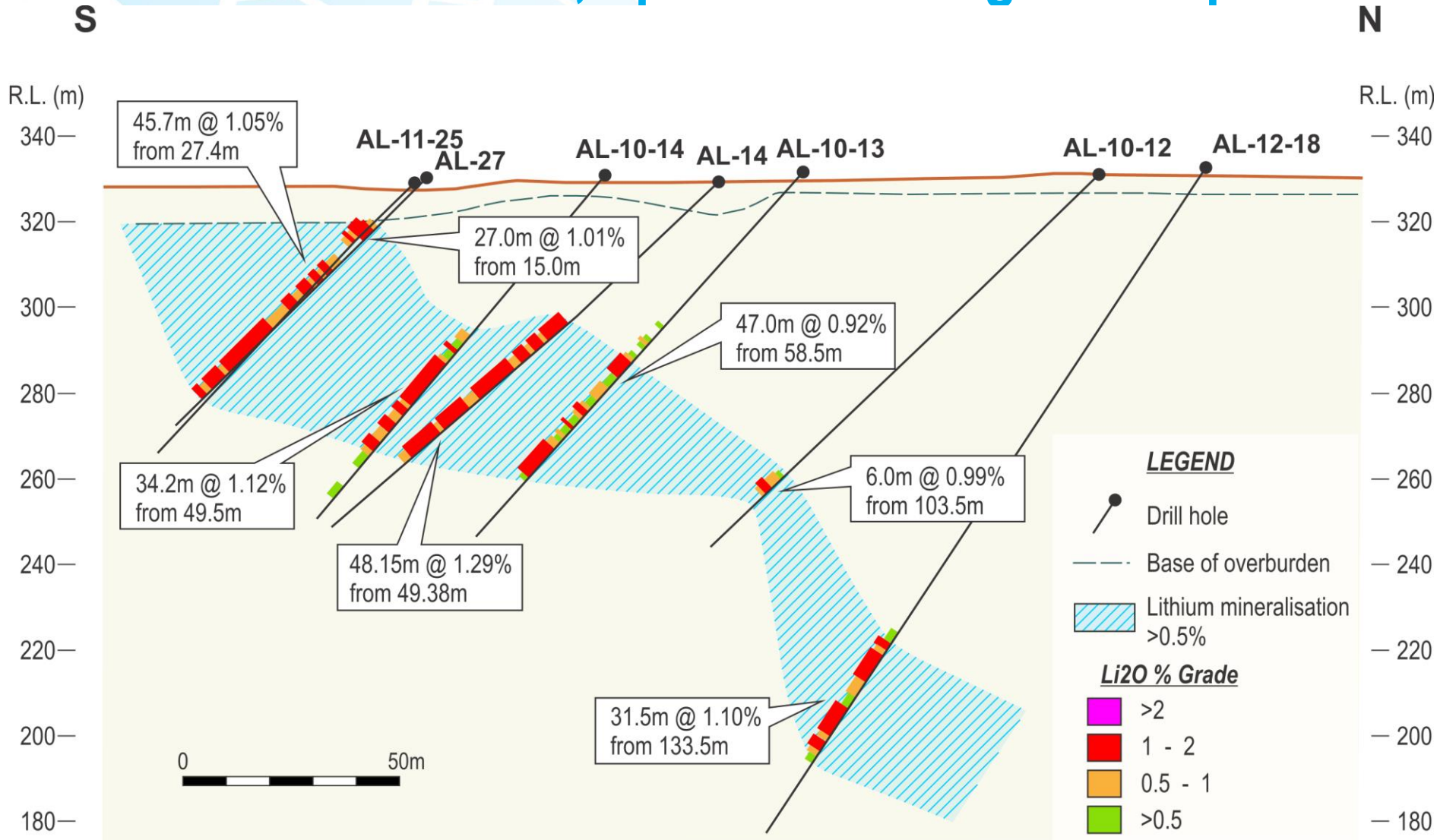
MEASURED
23%

INDICATED
57%

INFERRED
20%

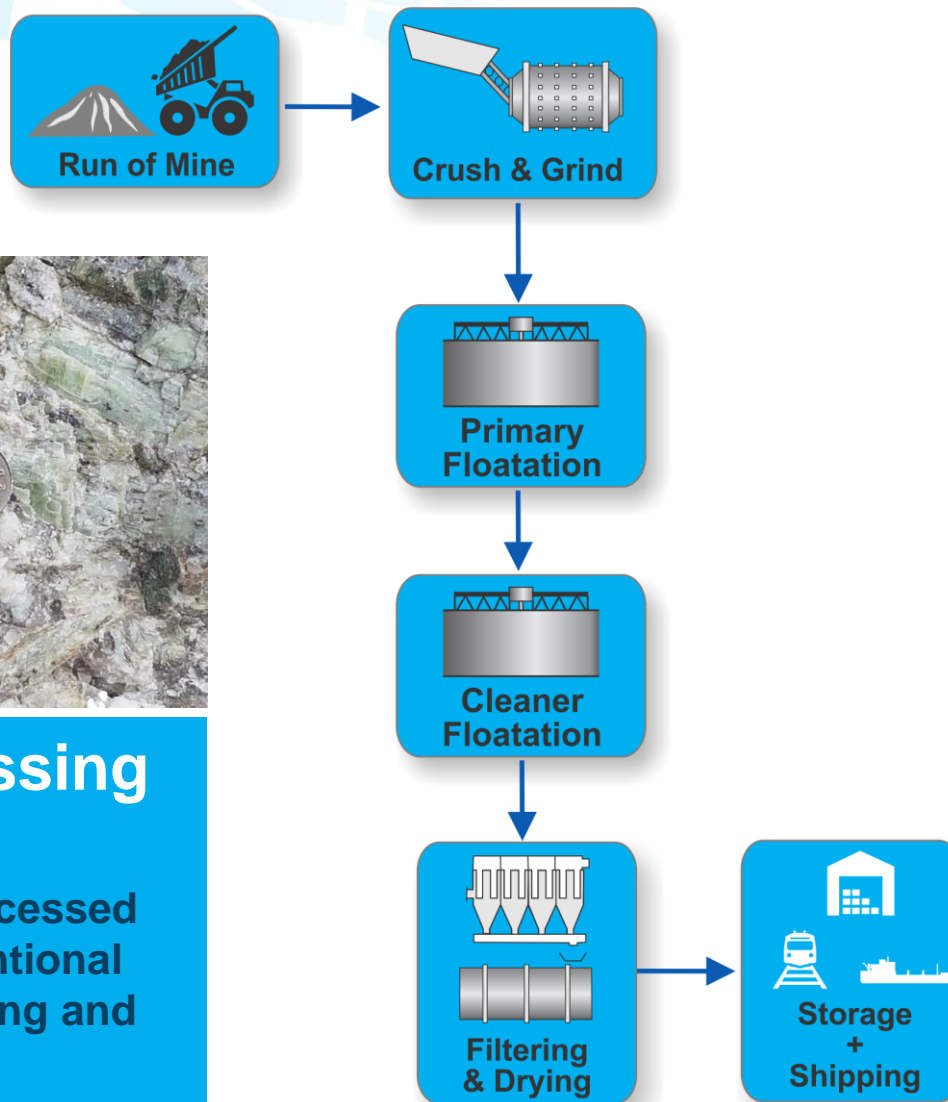
Authier Lithium Deposit Cross Section

Amenable to low-cost, open-cut mining techniques



Authier Metallurgy

Conventional processing route



Low processing risk

spodumene processed through conventional crushing, grinding and flotation

Flowsheet Design

85% recovery

5-6% Li₂O concentrate

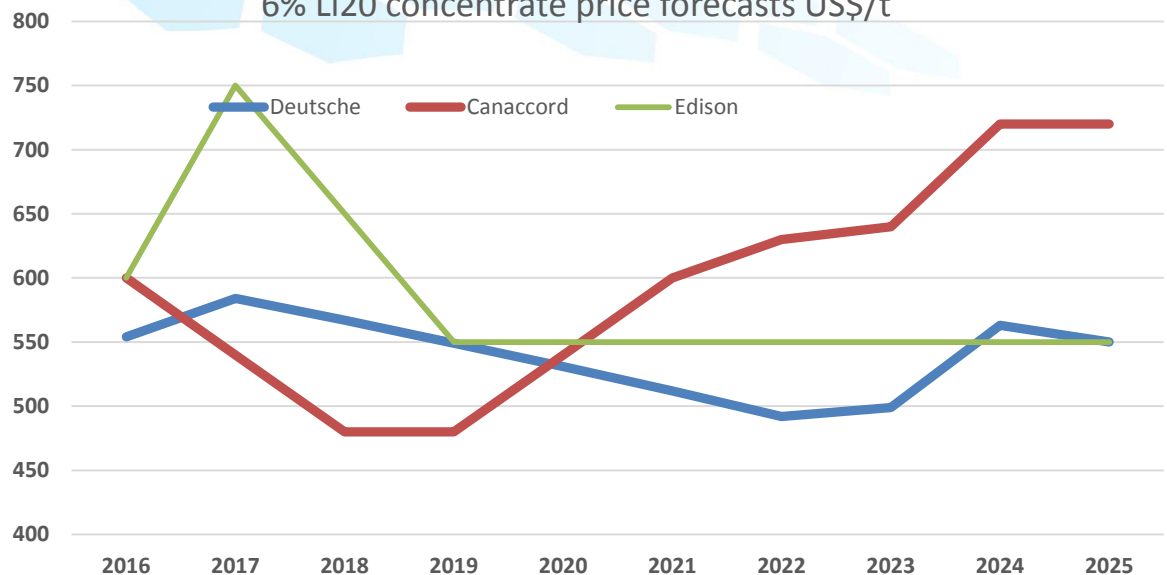
Optimisation Options

Mica flotation

Downstream processing into intermediate products

Authier Pre-Feasibility Study in Progress

6% Li2O concentrate price forecasts US\$/t



Galaxy currently selling concentrates at US\$600/t

Significantly higher prices than modelled in Authier 2013 NI-43101 PEA price of CAD\$525/t

Long term independent price forecasts reflect strong demand outlook for concentrates

Authier deposit advantages



Low Cost



Extensively Drilled



Well Studied



Open Pit



Simple Process



Good Infrastructure

Authier Next Steps



- ✓ Metallurgy program
- ✓ Pre-Feasibility Study
- ✓ Resource definition drilling
- ✓ Resource upgrade
- ✓ Definitive Feasibility Study
- ✓ Off-take and financing
- ✓ Construction and operation

A man with short grey hair, wearing a dark quilted vest over a red and blue plaid shirt and brown pants, is focused on examining a long, cylindrical drill core sample. He is standing in a cluttered workshop or laboratory. The drill core is resting on a wooden workbench. In the background, there are blue metal shelving units, a fan, and various tools and equipment. The lighting is bright, coming from overhead fixtures.

Gustavo Delendatti – Authier
Competent Person logging
drill core

Authier 2016 Drilling Program

Authier Drilling Program



DIAMOND DRILLING PROGRAM

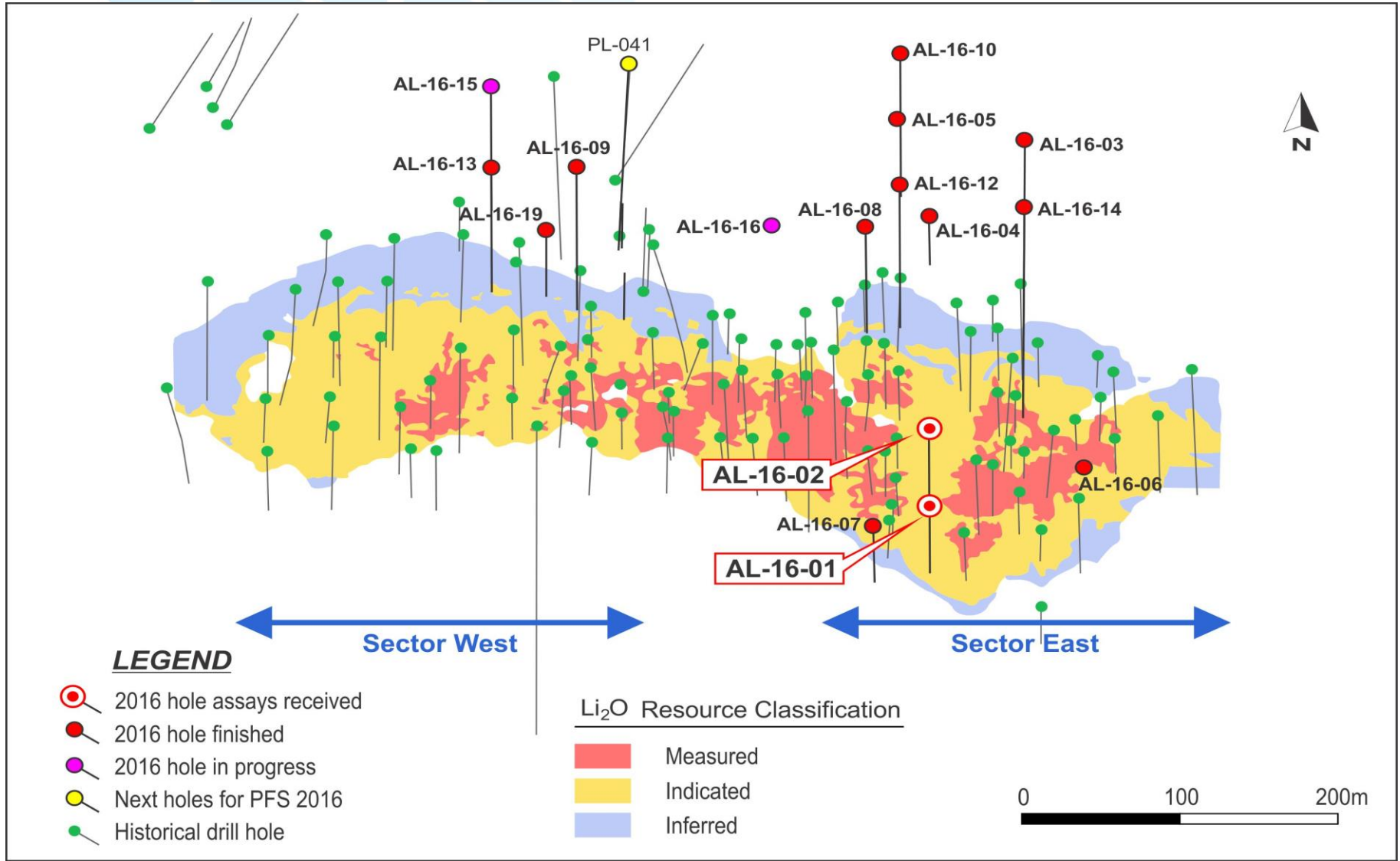
6,000 metres in 2 phases

Drilling Program Objectives

- ✓ Converting inferred mineral resources to measured and indicated
- ✓ Convert mineral resources to reserves
- ✓ Exploring for extensions to the mineralisation
- ✓ Collecting geotechnical data for Feasibility Studies

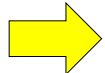
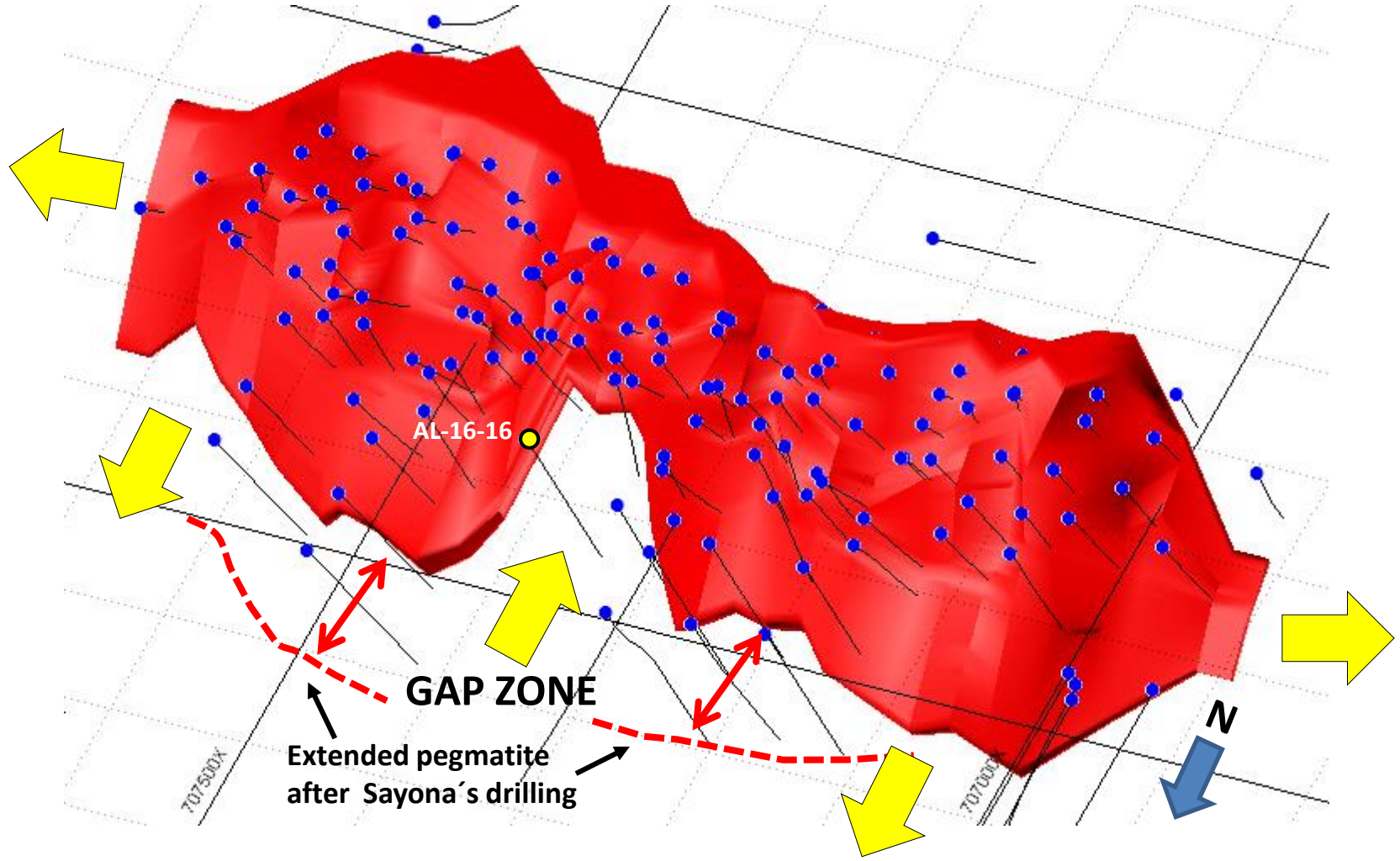
Authier Drilling Program

First phase 4,000m drilling program in progress



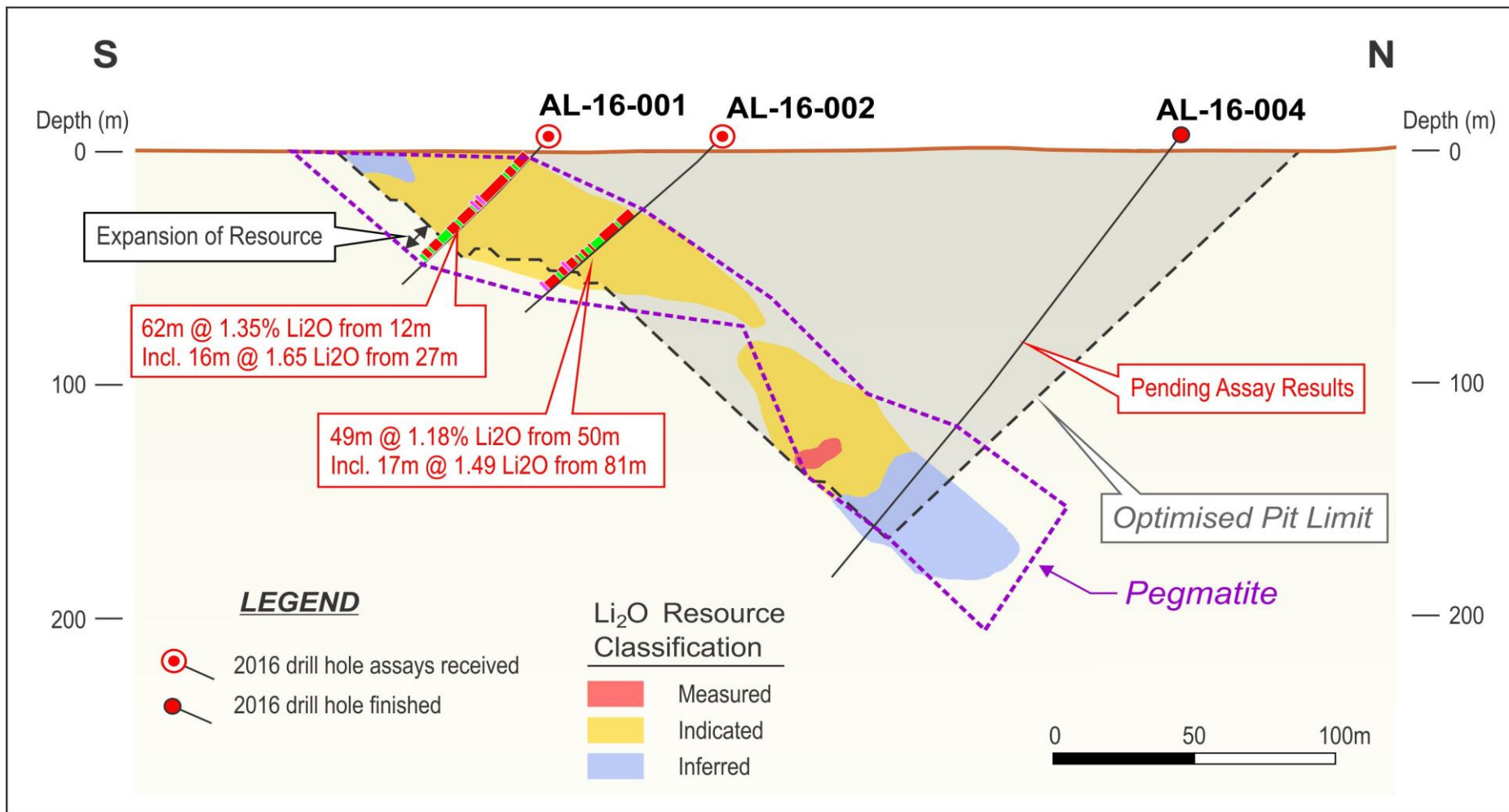
Authier Lithium Deposit Expansion Potential

Drill hole 16 intercepts 40 metres of mineralisation within the gap zone



Authier Drilling Program

First drill records longest intercept recorded at Authier
– 62m @ 1.35% Li₂O including, 16m @ 1.65% Li₂O



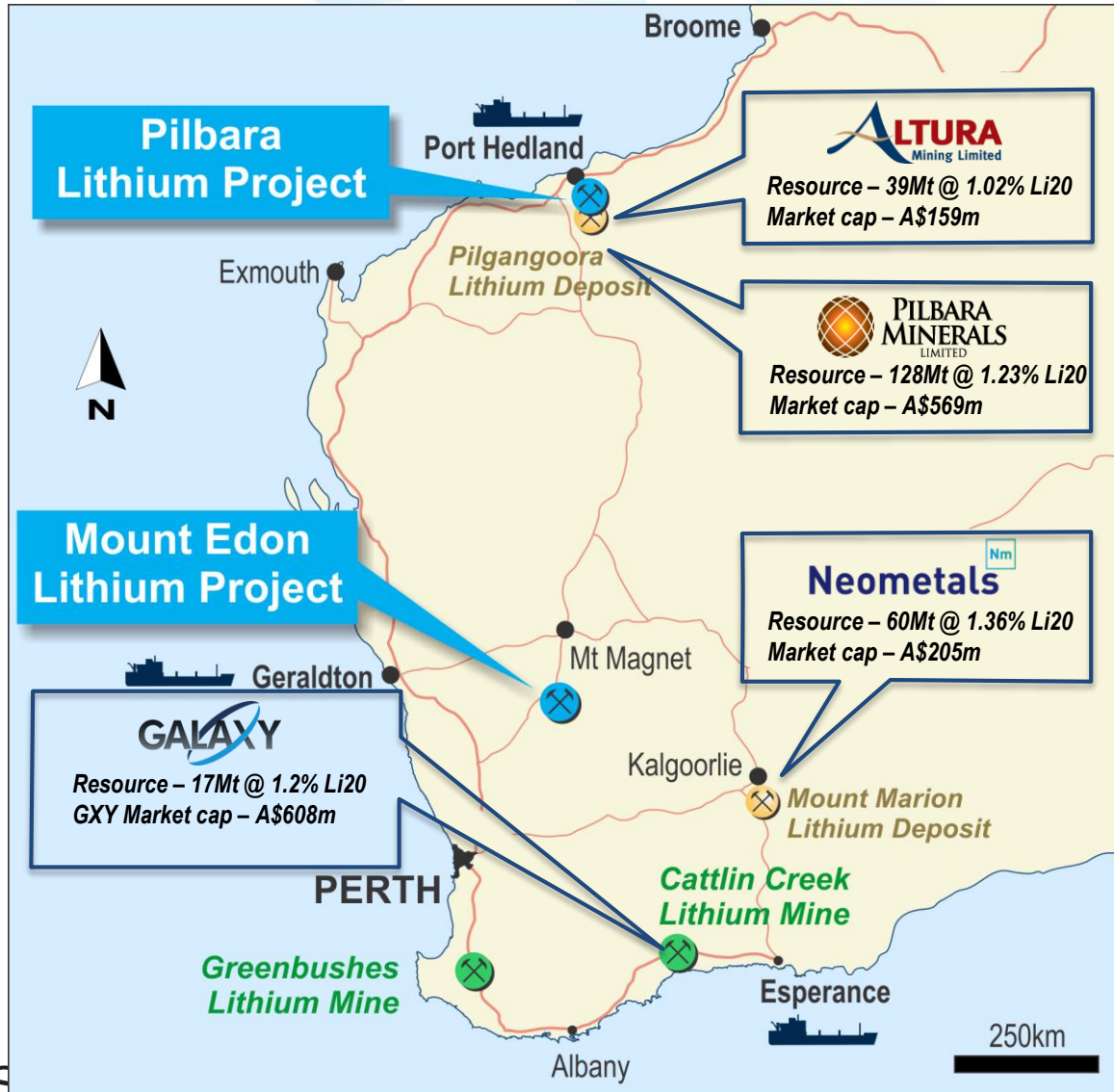
A man wearing a hat, a light-colored shirt, and dark pants is standing in a field of tall grass. He has a green bag slung over his shoulder and is holding a long stick. The background shows a vast landscape with rolling hills and a clear blue sky. A bird is flying in the sky on the right side.

Simon Attwell – Exploration Manager
with 29-years experience including
exploring for lithium and tantalum

Sayona's Other Projects

Western Australia Lithium Portfolio

A globally significant region for production of Lithium



Low-cost entry with

1,116 km²

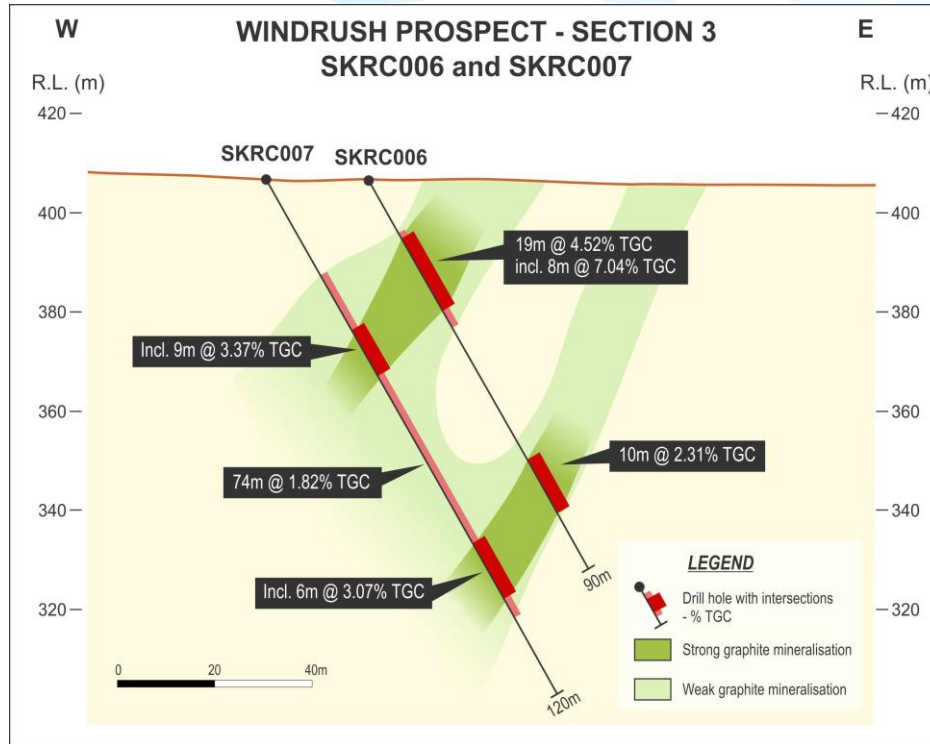
tenement holding,
including granted tenure

Western Australia

a dominant global
producer of Lithium from
high-grade, hard-rock
PEGMATITES

East Kimberley Graphite Project

Diamond drilling planned to test grades and quality



3,000 m
drilling completed in
Dec 2015

6 km of 20 km
target zone drilled

Best assay
12%TGC

278km²
**tenement
package**

Proven graphite
province

Best Intercepts:
16m @ 5%TGC
22m @ 3.4%TGC

Open at depth and
along strike

Coarse graphite
observed

World-class
Infrastructure

for access to
**world
markets**





Corporate Overview

Corporate Summary

TRADING EXCHANGE

ASX: SYA/SYAO

SHARES/OPTIONS

800 Million shares*

235 Million options*
3c exercise, Dec 2016 expiry

SHAREHOLDERS

30% DIRECTORS

62% TOP 20

CAPITALISATION

Price **2.5¢**
As at 24 Oct 2016

Market cap **\$19M**

Cash **\$1.2M**
As at 24 Oct 2016



Strong Team With Track Record of Success

- ✓ Expertise and experience in exploration, development and mining
- ✓ Strong skill set in Lithium exploration and development

Executive Team

Corey Nolan Chief Executive Officer

Simon Atwell Exploration Manager

Directors

Dan O'Neill

Paul Crawford

Allan Buckler

James Brown

Consultants

The logo for SGS, consisting of the letters 'SGS' in a bold, sans-serif font, with a vertical line to the right and horizontal lines above and below.

Lithium Industry Overview



Lithium ...

Critical in the Energy Revolution

Goldman
Sachs

“What if
I Told You.....
Lithium is the
New Gasoline”

Dec 2015

Lithium is now considered a key, strategic energy metal in the clean technology economy that is being fuelled by advances in electric vehicles, energy storage and electronics



citi

Energy Storage –

The economic value of energy storage over a 10-year period in the US could reach **\$228 billion, 21%** of the \$1 trillion global economic benefit

Disruptive Innovations II,
2014

The
Economist

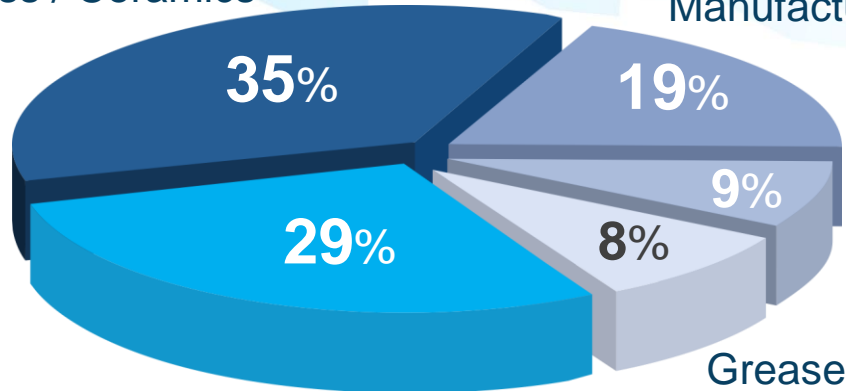
“An
Increasingly
Precious
Metal”

Jan 2016

Lithium Consumption – The Future is Electric

Glass / Ceramics

Manufacturing/ Plastics



Batteries

Other



Lithium-ion is the battery of choice



Super energy density



Lighter, more compact and portable

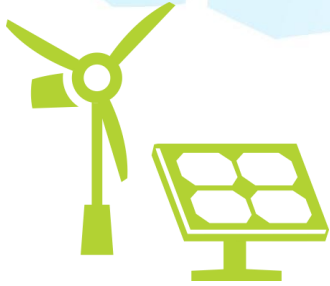


Longer life-cycle and more efficient



More environmentally friendly

Key Demand drivers through to 2025



Renewable grid storage

>30%
CAGR



Transportation –
electric and
hybrid vehicles

20-30%
CAGR



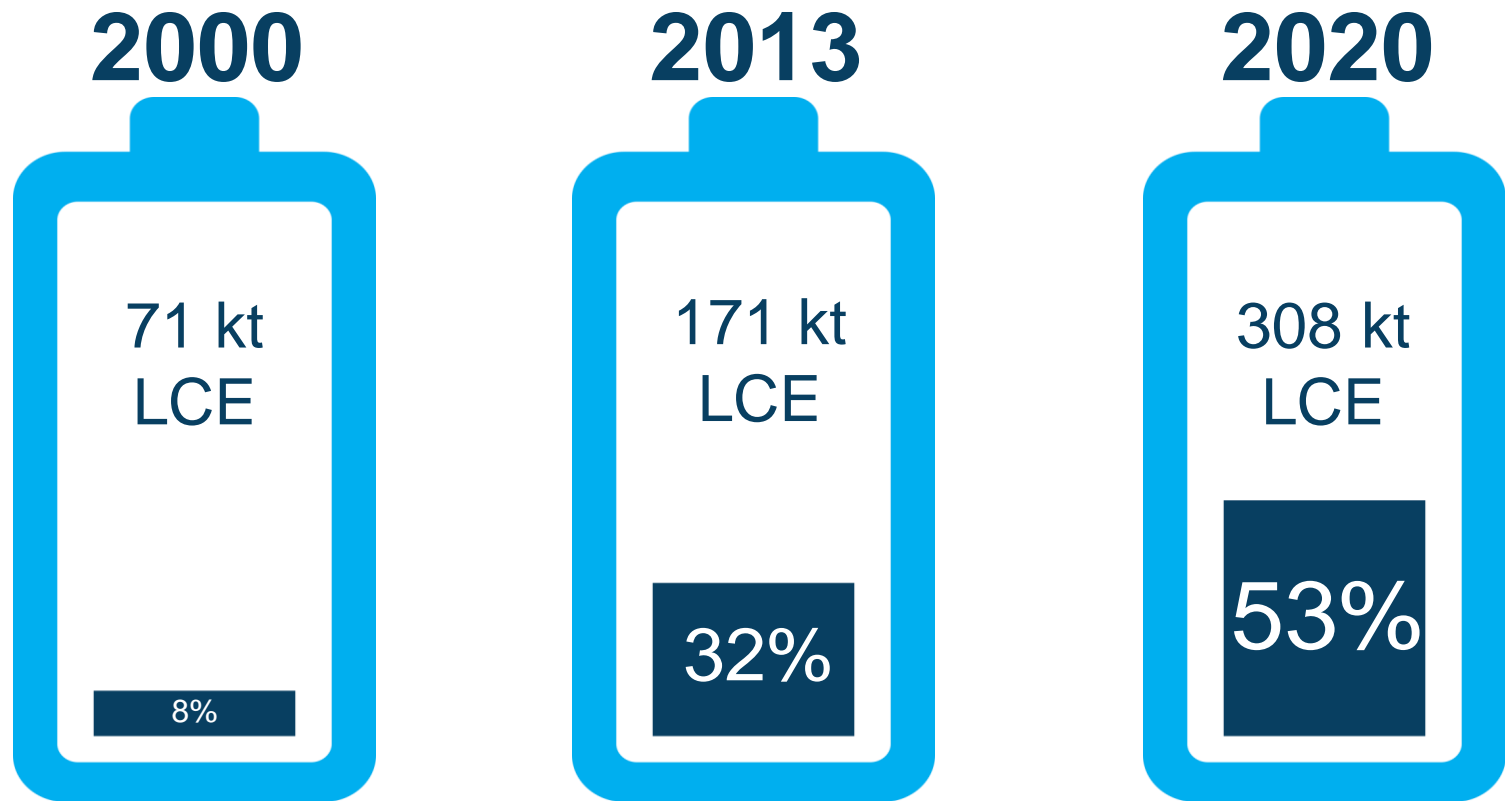
Consumer
electronics

8-10%
CAGR

Batteries are the fastest growing segment

“ *The problem with existing lead-acid batteries is that they suck* ”

Elon Musk



■ Battery consumption as a % of total consumption

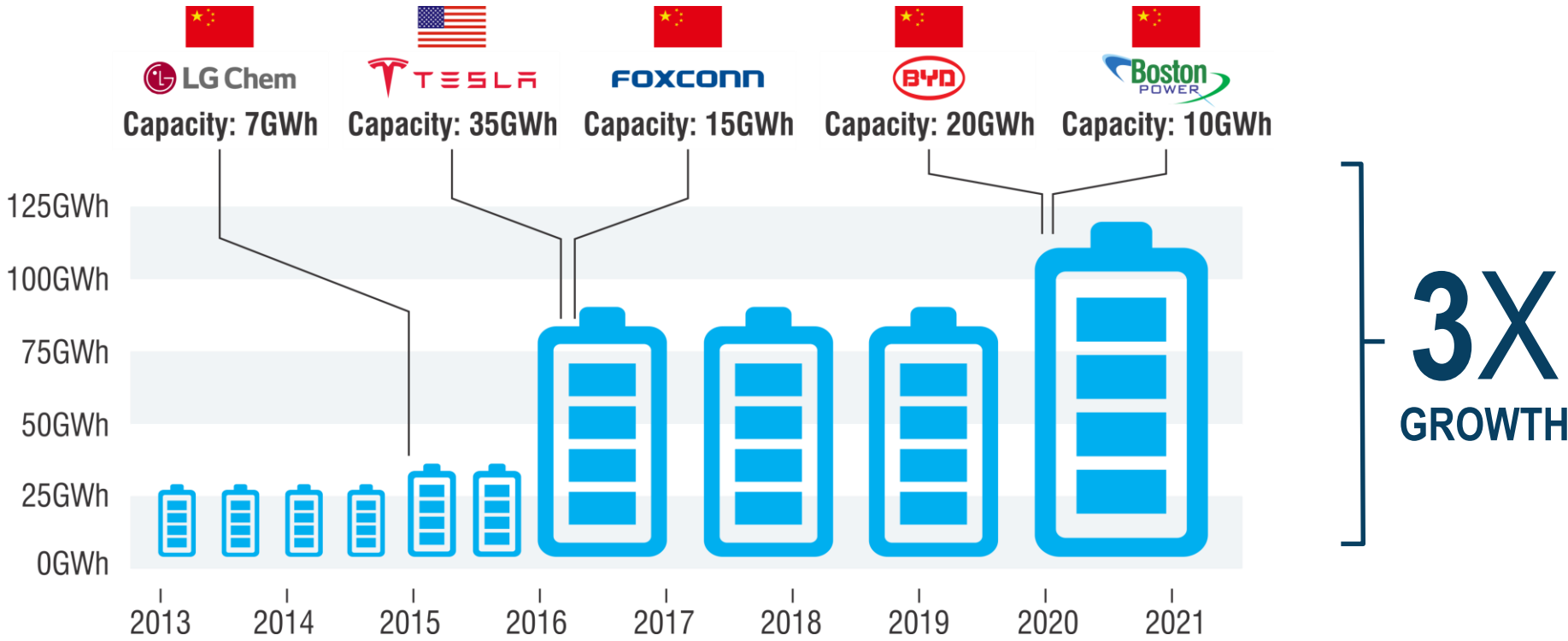
The Megafactories are Coming

“ Solar power *[with] batteries* will be the primary means of sustainable energy production ”

Elon Musk



Tesla's Nevada site



3X
GROWTH

Dawn of a New Auto Era

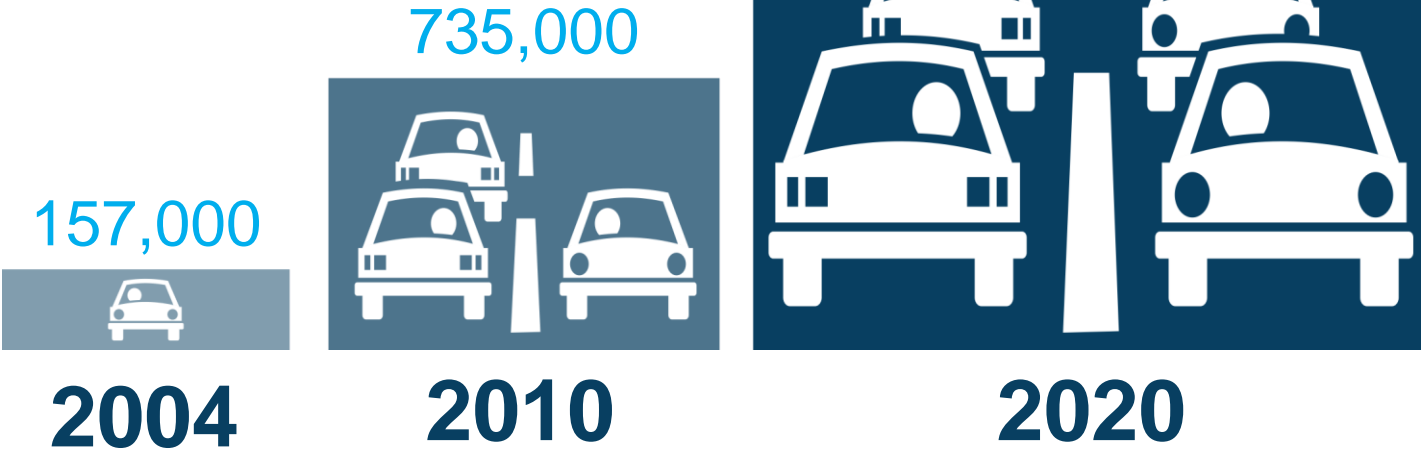
“ Car design will **change more in the next 15 years** than it has in the past 100 — **electrification** will kick start the **biggest change in automotive design in history** ”

Ian Callum, head of design for Jaguar, April 2016



Electric & Hybrid Vehicles

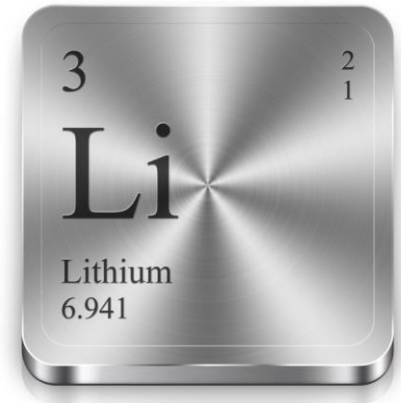
20 MILLION EV & HYBRID CARS BY 2020



Lithium Sources

LITHIUM IS A SOFT SILVER-GREY METAL:

- ✓ Low density and atomic mass
- ✓ High electrochemical potential
- ✓ High specific heat capacity



2 MAJOR SOURCES OF LITHIUM

Salt Lake (brine)



Hard rock pegmatite



SIMPLE
PROCESSING



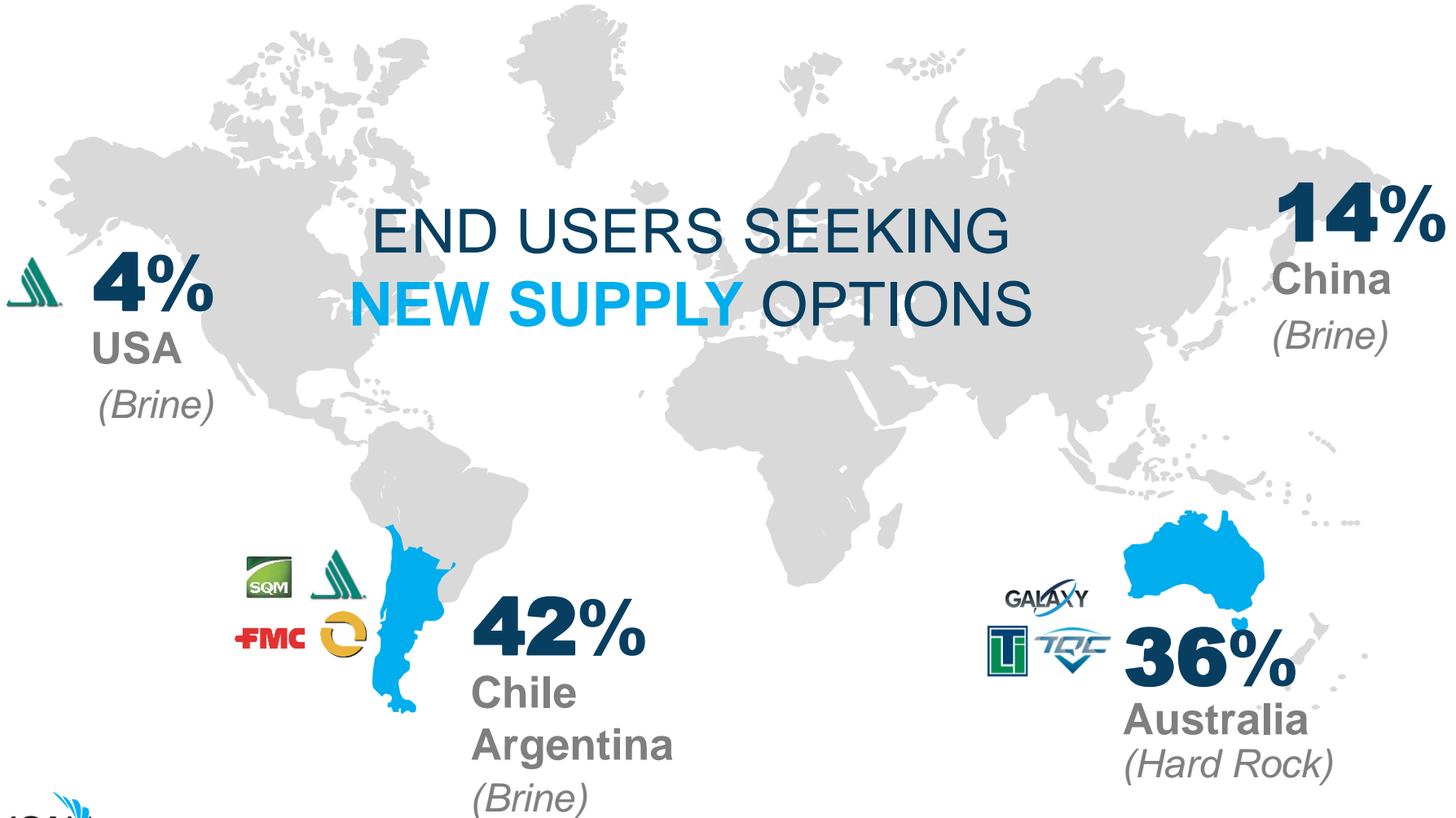
CONVERTS TO
LITHIUM-HYDROXIDE
FOR USE IN
LITHIUM-ION
BATTERIES



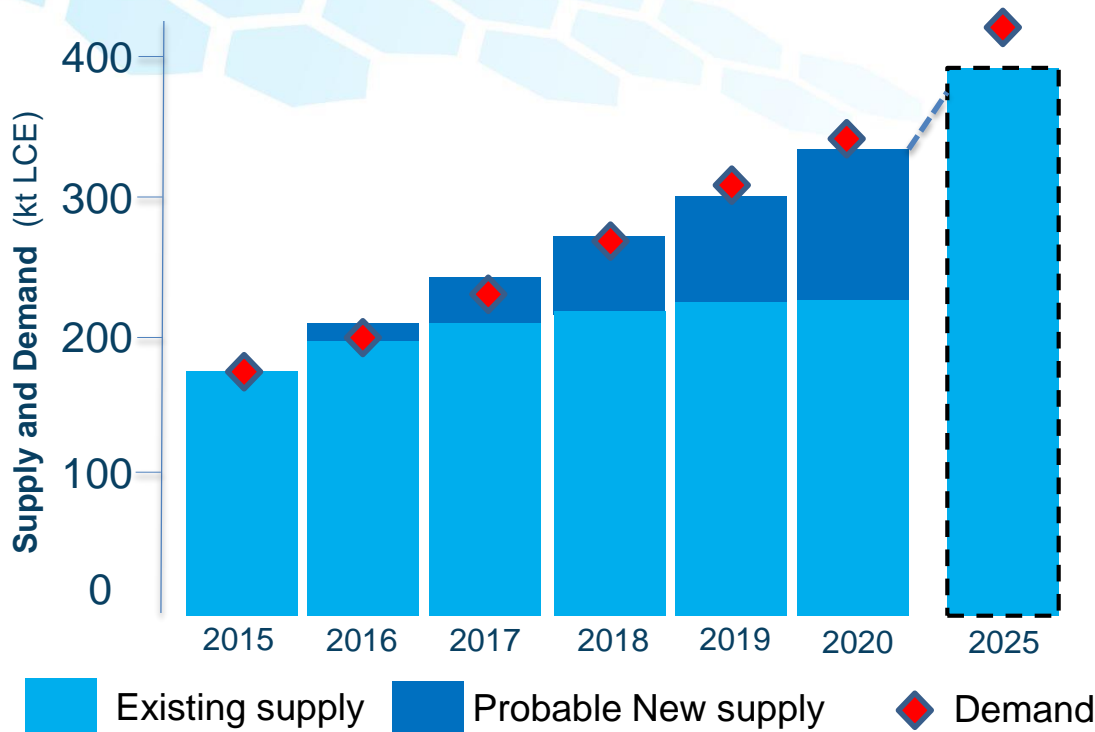
Spodumene extracted
from pegmatites:

Few New Lithium SUPPLY Options Available

5 COMPANIES PRODUCE **90%** OF WORLD SUPPLY

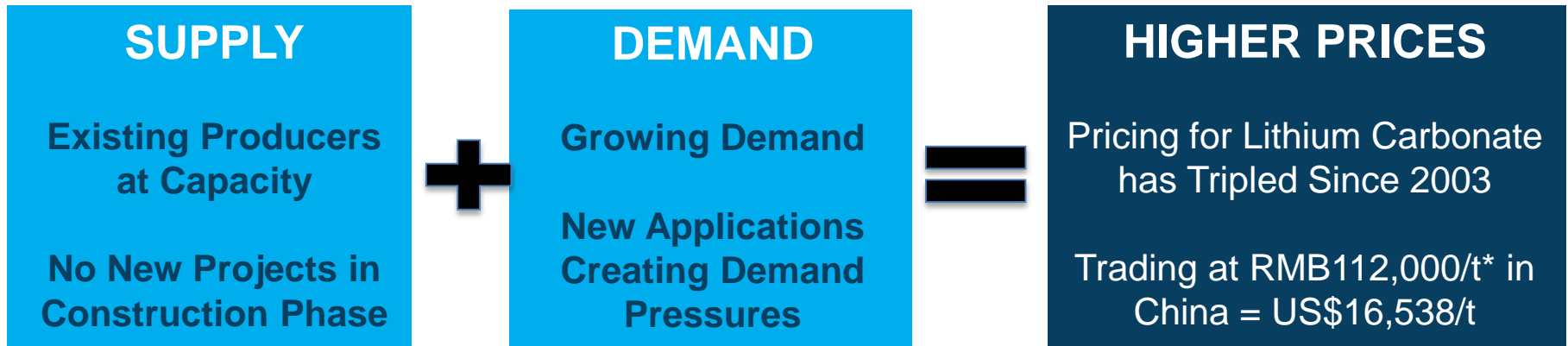


Supply & Demand – A Perfect Storm



BEYOND 2020

**GAP BETWEEN
SUPPLY & DEMAND
EMERGES**

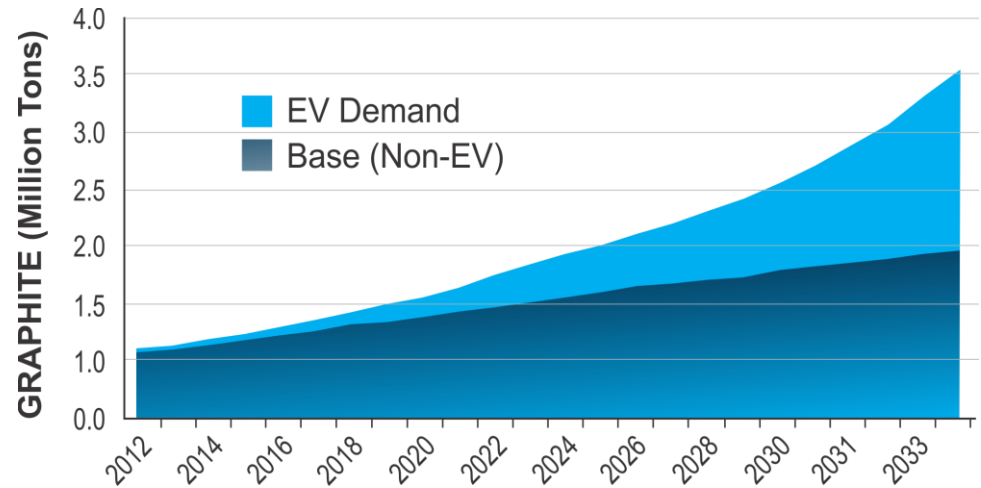


Why the Graphite Exposure?

\$12 BILLION GROWING MARKET

FORECAST DEMAND FOR GRAPHITE IN ELECTRIC VEHICLES TO INCREASE OVER 10 YEARS

80%



Disclaimer

COMPETENT PERSON STATEMENTS

Gustavo Delendatti for Authier - The information in this report that relates to Exploration Results is based on information compiled by Dr Gustavo Delendatti, a member of the Australian Institute of Geoscientists. Dr Delendatti is an independent consultant, and has sufficient experience which is relevant to the style of mineralisation and type of deposit under consideration and to the activity which it is undertaking to qualify as a Competent Person as defined in the JORC Code (2012 Edition) of the "Australasian Code for Reporting of Exploration Results, Mineral Resources and Ore Reserves." Dr Delendatti was responsible for the design and conduct of this exploration drilling campaign, supervised the preparation of the technical information in this release and has relevant experience and competence of the subject matter. Dr Delendatti, as competent person for this announcement, has consented to the inclusion of the information in the form and context in which it appears herein.

FORWARD LOOKING STATEMENTS

This presentation may contain certain forward looking statements. Such statements are only predictions, based on certain assumptions and involve known and unknown risks, uncertainties and other factors, many of which are beyond Sayona Limited's control. Actual events or results may differ materially from the events or results expected or implied in any forward looking statement. The inclusion of such statements should not be regarded as a representation, warranty or prediction with respect to the accuracy of the underlying assumptions or that any forward looking statements will be or are likely to be fulfilled. Sayona Limited undertakes no obligation to update any forward-looking statement to reflect events or circumstances after the date of this presentation (subject to securities exchange disclosure requirements). The information in this presentation does not take into account the objectives, financial situation or particular needs of any person. Nothing contained in this presentation constitutes investment, legal, tax or other advice.

Reference to Previous ASX Releases

This presentation refers to the following previous ASX releases:

- Authier JORC Resource, 7 July 2016
- Corkwood Drilling – Broad Zones of Mineralisation, 17 February 2016
- High grade lithium intersected over wide widths at Authier, 24 Oct, 2016
- Drilling intersects thick zone of mineralisation in the gap zone, 25 Oct 2016

The Company confirms that it is not aware of any new information or data that materially affects the information included in the original market announcement and all material assumptions and technical parameters continue to apply and have not materially changed. The Company confirms that the form and context in which the Competent Person's findings are presented have not been materially modified from the original market announcements.

ACN 091 951 978
Suite 68, 283 Given Terrace
Paddington, Queensland, 4064
Brisbane, Australia
Ph: +61 7 3369 7058
info@sayonamining.com.au

www.sayonamining.com.au

The logo for SAYONA MINING LIMITED features the word "SAYONA" in a large, white, sans-serif font. To the right of the letters "A" and "N" is a stylized blue graphic consisting of three curved, overlapping shapes that resemble a flame or a mineral vein. Below "SAYONA" is the text "MINING LIMITED" in a smaller, white, all-caps, sans-serif font. The entire logo is set against a dark teal background with a white hexagonal grid pattern.

SAYONA
MINING LIMITED

