



Press Release
17th October 2016

West African hits 16m at 69.1g/t Au including 2m at 315.3g/t Au from 209m at M1 South

Gold developer West African Resources Limited (ASX, TSXV: WAF) is pleased to report further high-grade RC results from the M1 prospect, at its 100%-owned Tanlouka Gold Project, Burkina Faso.

Highlights

- **More high grade results from M1 South with 16m at 69.1g/t Au including 2m at 315.3g/t Au from 209m**
- **Deepest results to date, outside current resource area, down dip of previous drilling**
- **New results to be included in resource update in Q4 2016**
- **Feasibility study in progress on track for completion in Q4 2016**
- **\$19.5m cash at bank and no debt**

Managing Director Richard Hyde commented:

“Extensional drilling at M1 South has intercepted mineralisation beneath of the current resource area, returning **16m at 69.1g/t Au including 2m at 315.3g/t Au from 209m.**

A further gold zone up hole returned **9m at 11.17 g/t Au including 2m 32.8g/t Au from 197m.**

“These are the deepest results to date and will extend the resource beyond 200m vertical metres. Drilling is currently focussed on extending mineralisation to 300m below surface beneath the current M1 South resource. A further resource update is expected in Q4, in parallel with completion of feasibility studies for the project.”

M1 South Drilling at Depth

Diamond drilling is in progress at M1 South with the aim of extending mineralisation beneath the current resource. Drilling is being completed using two multipurpose contract rigs operating double shift, in parallel with WAF’s two diamond rigs operating on a single shift basis. Drilling is being completed on 25m by 50m grid along 350m strike. Significant results from the on-going drilling program include:

- TAN16-DD053: 4m at 1.74 g/t Au from 126m
- TAN16-DD054: 6m at 1.3 g/t Au from 174m, and
 - 7m at 1.95 g/t Au from 183m, and
 - 3m at 8.91 g/t Au from 218m including 1m at 23.8g/t Au
- TAN16-DD055: **9m at 11.17 g/t Au, from 197m including 2m 32.8g/t Au,** and
 - **16m at 69.11 g/t Au from 209m, including 2m at 315.3g/t Au**
- TAN16-DD056 2m at 4.06 g/t Au from 221m

Tanlouka Gold Project

M1 South Diamond Drilling - Visible gold in TAN16-DD055 211 – 214m down hole

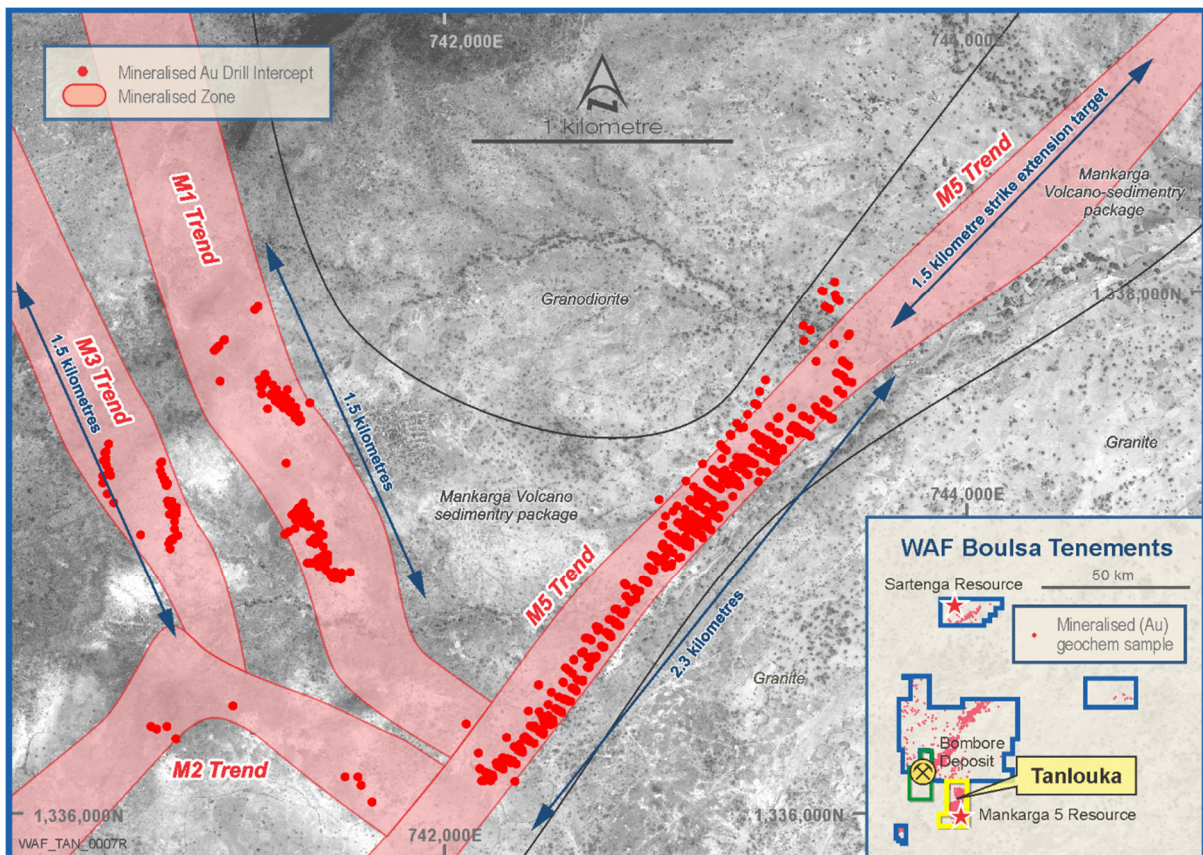


**Table 1: Tanlouka Gold Project
M1 South Diamond Drilling
TAN16-DD055 One Metre Results**

Hole ID	From (m)	To (m)	Sample Id	Au g/t	Hole ID	From (m)	To (m)	Sample Id	Au g/t
TAN16-DD055	190	191	217119	0.03	TAN16-DD055	210	211	217144	2.84
TAN16-DD055	191	192	217122	0.04	TAN16-DD055	211	212	217145	39.38
TAN16-DD055	192	193	217123	0.01	TAN16-DD055	212	213	217146	68.04
TAN16-DD055	193	194	217124	0.03	TAN16-DD055	213	214	217147	332.10
TAN16-DD055	194	195	217125	0.03	TAN16-DD055	214	215	217148	298.57
TAN16-DD055	195	196	217126	0.04	TAN16-DD055	215	216	217149	83.10
TAN16-DD055	196	197	217127	0.03	TAN16-DD055	216	217	217150	70.19
TAN16-DD055	197	198	217128	7.46	TAN16-DD055	217	218	217151	18.48
TAN16-DD055	198	199	217129	0.10	TAN16-DD055	218	219	217153	10.24
TAN16-DD055	199	200	217131	38.87	TAN16-DD055	219	220	217154	137.50
TAN16-DD055	200	201	217132	26.78	TAN16-DD055	220	221	217155	11.14
TAN16-DD055	201	202	217133	20.63	TAN16-DD055	221	222	217156	3.98
TAN16-DD055	202	203	217134	1.20	TAN16-DD055	222	223	217157	0.91
TAN16-DD055	203	204	217135	4.52	TAN16-DD055	223	224	217158	13.63
TAN16-DD055	204	205	217136	0.26	TAN16-DD055	224	225	217159	0.85
TAN16-DD055	205	206	217137	0.70	TAN16-DD055	225	226	217162	0.05
TAN16-DD055	206	207	217138	0.07	TAN16-DD055	226	227	217163	0.03
TAN16-DD055	207	208	217139	0.15	TAN16-DD055	227	228	217164	0.01
TAN16-DD055	208	209	217142	0.13	TAN16-DD055	228	229	217165	0.04
TAN16-DD055	209	210	217143	14.80	TAN16-DD055	229	230	217166	0.04

Step-out drilling to the northwest and closing the gap between M1 and M5, is expected to start in late October or early November when the wet season has abated and ground conditions and access have improved. Resource definition RC drilling at M5 has been paused to allow focus to be directed to M1 South, and to reduce rig movement during the current wet season.

Figure 1: Tanlouka Gold Project – Mineralised Trends and Prospect Locations



A summary plan and sections for M1 South are presented below. Full results are presented in Table 1.

Figure 2: M1 South Summary Plan

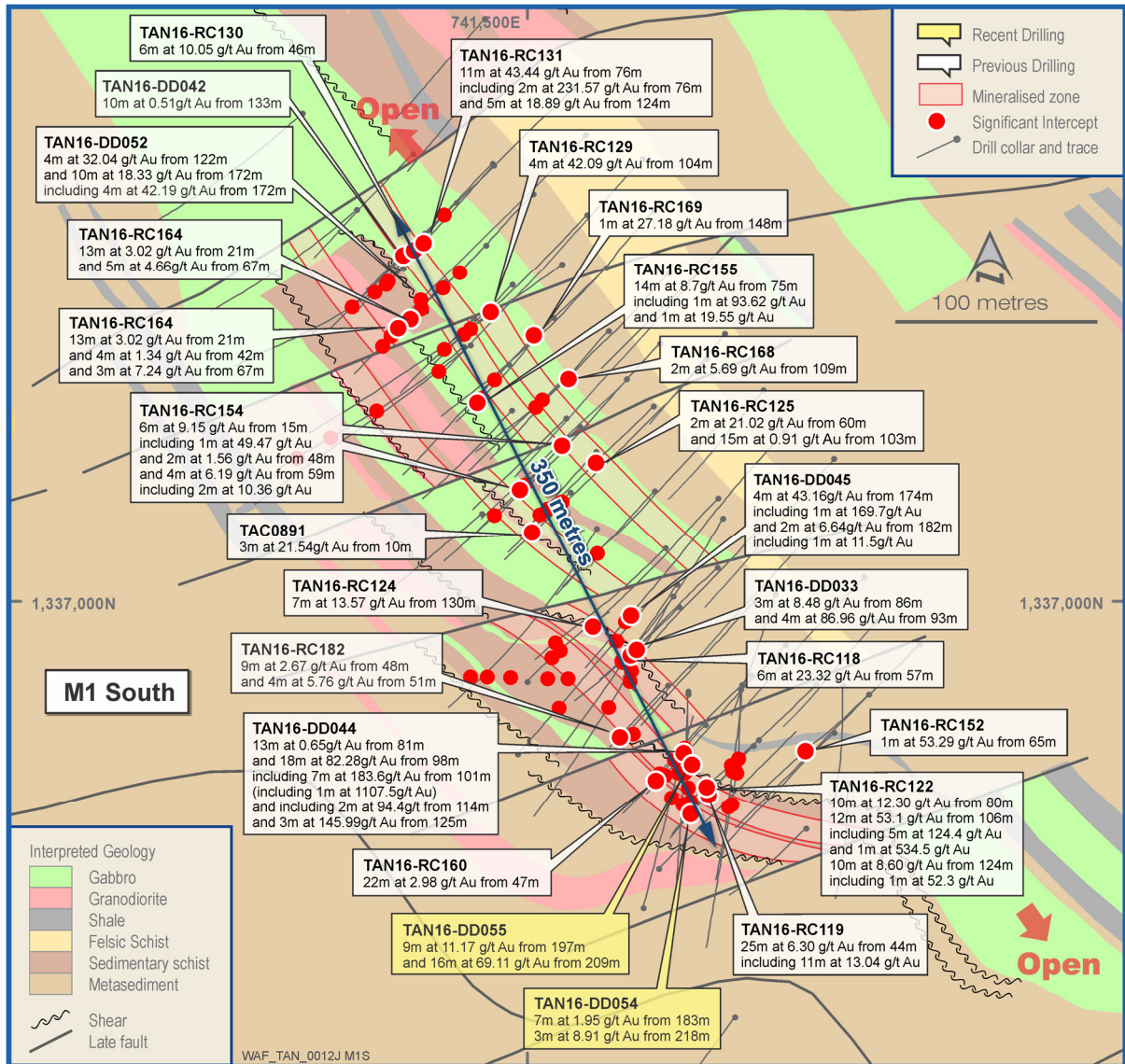


Figure 3: M1 South Section SE0425

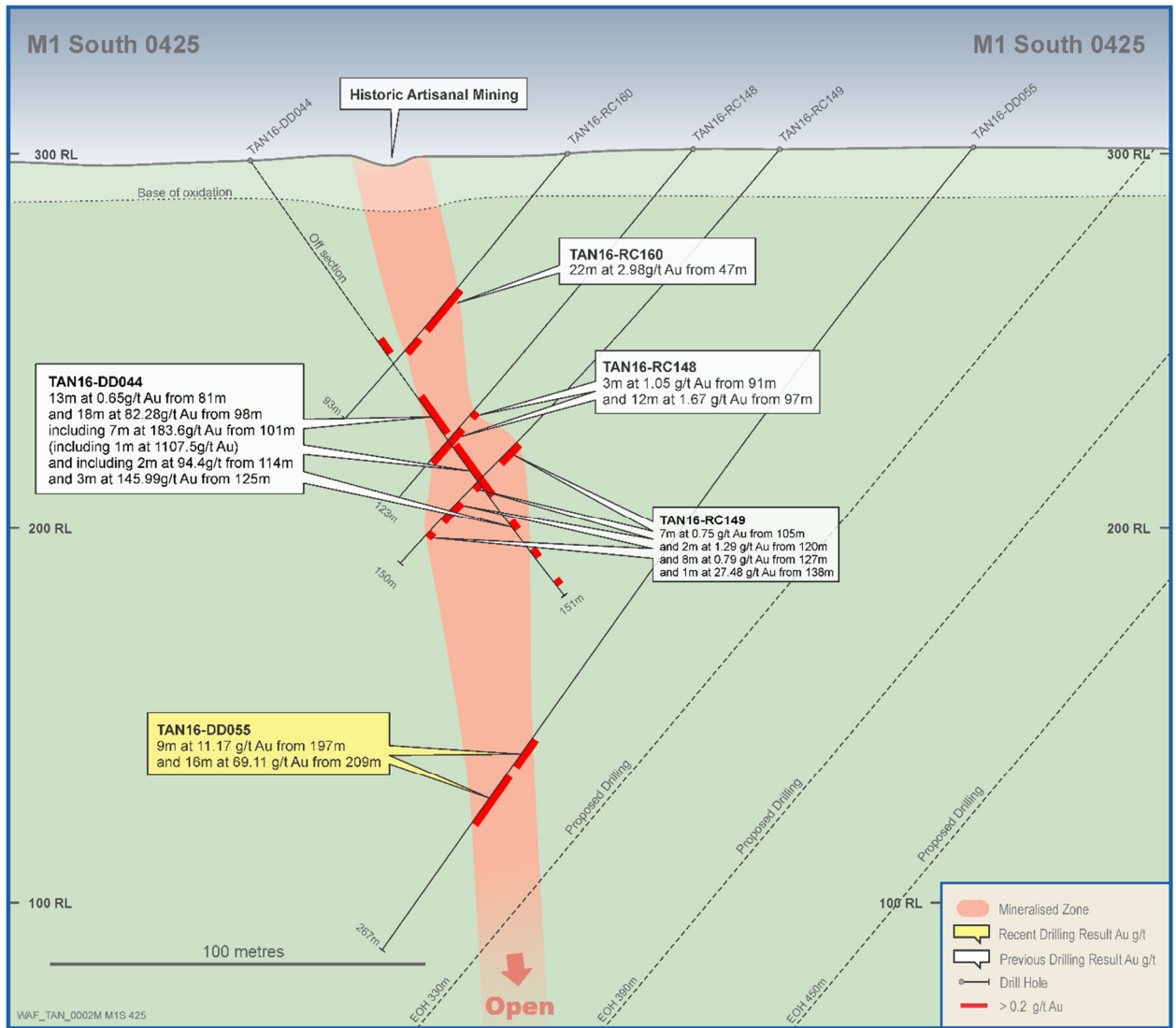
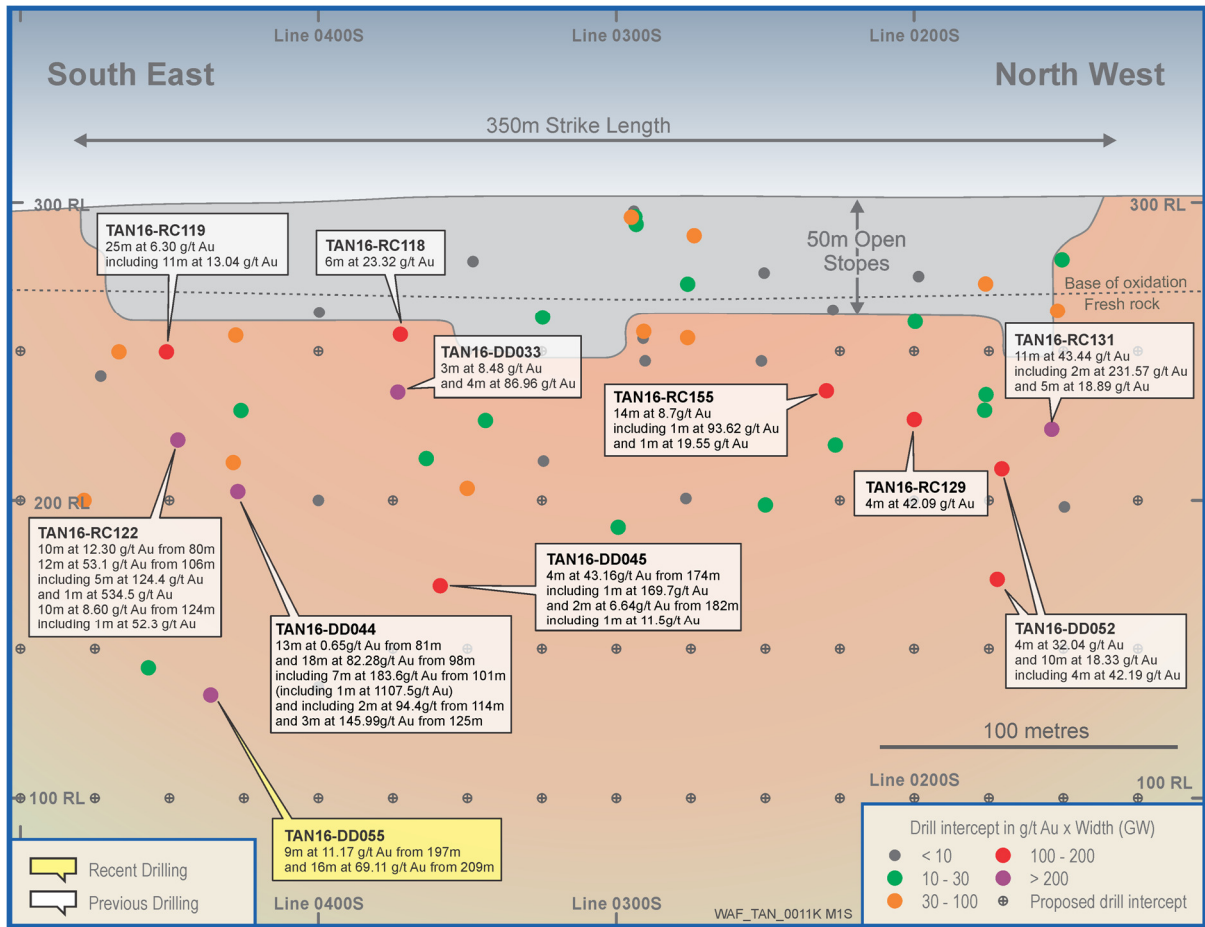


Figure 4: M1 South Long- Section



Hole ID	From	To	Interval	Au g/t	Dip	Azi	EOH	Easting	Northing	RL	Section
TAN16-DD046	114	116	2	14.53	-50	225	200	741694	1336978	301	SE0475
TAN16-DD046	150	153	3	13.18	-50	225	200	741694	1336978	301	SE0475
TAN16-DD048	147	165	18	1.11	-50	225	197	741589	1337120	303	SE0300
TAN16-DD052	122	126	4	32.04	-50	225	201	741529	1337232	303	SE0175
TAN16-DD052	172	182	10	18.32	-50	225	201	741529	1337232	303	SE0175
TAN16-DD053	126	130	4	1.74	-50	225	180	741612	1337000	302	SE0400
TAN16-DD054	174	180	6	1.3	-50	225	255	741673	1336990	301	SE0450
TAN16-DD054	183	190	7	1.95	-50	225	255	741673	1336990	301	SE0450
TAN16-DD054	218	221	3	8.91	-50	225	255	741673	1336990	301	SE0450
TAN16-DD055	197	206	9	11.17	-50	225	267	741667	1337012	302	SE0425
TAN16-DD055	209	225	16	69.11	-50	225	267	741667	1337012	302	SE0425
TAN16-DD056	221	223	2	4.06	-50	225	250	741652	1337071	302	SE0375

- * denotes ending in mineralisation
- All holes are RC and diamond holes.
- All reported intersections from the current 2016 program are assayed at 1m intervals.
- Sample preparation and Fire Assay conducted by BIGS Ouagadougou. Assayed by 50g fire assay with AAS finish.
- Mineralised intervals reported with a maximum of 2 metre of internal dilution of less than 0.50g/t gold. No top cut applied.
- Sample preparation and Fire Assay conducted by BIGS Ouagadougou. Assayed by 50g fire assay with AAS finish.
- QA/QC protocol: For RC samples we insert one blank, one standard and one duplicate for every 17 samples (3 QA/QC within every 20 samples).

Competent Persons and Qualified Persons Statement

Information in this announcement that relates to exploration results, exploration targets or mineral resources is based on information compiled by Mr Richard Hyde, a Director, who is a Member of The Australian Institute of Mining and Metallurgy and Australian Institute of Geoscientists. Mr Hyde has sufficient experience which is relevant to the style of mineralisation and type of deposit under consideration and to the activity which he is undertaking to qualify as a Competent Person as defined in the 2012 Edition of the Australasian Code for Reporting of Exploration Results, Mineral Resources and Ore Reserves (the JORC Code) and a Qualified Person under National Instrument 43-101. Mr Hyde consents to the inclusion in this announcement of the statements based on his information in the form and context in which they appear.

Forward Looking Information

This news release contains “forward-looking information” within the meaning of applicable Canadian and Australian securities legislation, including information relating to West African's future financial or operating performance may be deemed “forward looking”. All statements in this news release, other than statements of historical fact, that address events or developments that West African expects to occur, are “forward-looking statements”. Forward-looking statements are statements that are not historical facts and are generally, but not always, identified by the words “expects”, “does not expect”, “plans”, “anticipates”, “does not anticipate”, “believes”, “intends”, “estimates”, “projects”, “potential”, “scheduled”, “forecast”, “budget” and similar expressions, or that events or conditions “will”, “would”, “may”, “could”, “should” or “might” occur. All such forward-looking statements are based on the opinions and estimates of the relevant management as of the date such statements are made and are subject to important risk factors and uncertainties, many of which are beyond West African’s ability to control or predict. Forward-looking statements are necessarily based on estimates and assumptions that are inherently subject to known and unknown risks, uncertainties and other factors that may cause actual results, level of activity, performance or achievements to be materially different from those expressed or implied by such forward-looking statements. In the case of West African, these facts include their anticipated operations in future periods, planned exploration and development of its properties, and plans related to its business and other matters that may occur in the future. This information relates to analyses and other information that is based on expectations of future performance and planned work programs. Statements concerning mineral resource estimates may also be deemed to constitute forward-looking information to the extent that they involve estimates of the mineralization that will be encountered if a mineral property is developed.

Forward-looking information is subject to a variety of known and unknown risks, uncertainties and other factors which could cause actual events or results to differ from those expressed or implied by the forward-looking information, including, without

limitation: exploration hazards and risks; risks related to exploration and development of natural resource properties; uncertainty in West African’s ability to obtain funding; gold price fluctuations; recent market events and conditions; risks related to the uncertainty of mineral resource calculations and the inclusion of inferred mineral resources in economic estimation; risks related to governmental regulations; risks related to obtaining necessary licenses and permits; risks related to their business being subject to environmental laws and regulations; risks related to their mineral properties being subject to prior unregistered agreements, transfers, or claims and other defects in title; risks relating to competition from larger companies with greater financial and technical resources; risks relating to the inability to meet financial obligations under agreements to which they are a party; ability to recruit and retain qualified personnel; and risks related to their directors and officers becoming associated with other natural resource companies which may give rise to conflicts of interests. This list is not exhaustive of the factors that may affect West African’s forward-looking information. Should one or more of these risks and uncertainties materialize, or should underlying assumptions prove incorrect, actual results may vary materially from those described in the forward-looking information.

West African’s forward-looking information is based on the reasonable beliefs, expectations and opinions of their respective management on the date the statements are made and West African does not assume any obligation to update forward looking information if circumstances or management’s beliefs, expectations or opinions change, except as required by law. For the reasons set forth above, investors should not place undue reliance on forward-looking information. For a complete discussion with respect to West African, please refer to West African’s financial statements and related MD&A, all of which are filed on SEDAR at www.sedar.com.

Neither TSX Venture Exchange nor its Regulation Services Provider (as that term is defined in the policies of the TSX Venture Exchange) accepts responsibility for the adequacy or accuracy of this release.

Section 1: Sampling Techniques and Data		
Criteria	JORC Code Explanation	Commentary
Sampling Technique	<p>Nature and quality of sampling (e.g. cut channels, random chips, or specific specialised industry standard measurement tools appropriate to the minerals under investigation, such as downhole gamma sondes, or handheld XRF instruments, etc.). These examples should not be taken as limiting the broad meaning of sampling</p> <p>Include reference to measures taken to ensure sample representivity and the appropriate calibration of any measurement tools or systems used. Aspects of the determination of mineralisation that are Material to the Public Report.</p> <p>In cases where 'industry standard' work has been done this would be relatively simple (e.g. 'reverse circulation drilling was used to obtain 1 m samples from which 3 kg was pulverised to produce a 30 g charge for fire assay'). In other cases more explanation may be required, such as where there is coarse gold that has inherent sampling problems. Unusual commodities or mineralisation types (e.g. submarine nodules) may warrant disclosure of detailed information.</p>	<p>The Mankarga area is being drilled using Diamond Core Drilling (DD) and Reverse Circulation (RC) drilling. The drill spacing is being in-filled to a nominal 25m x 20m grid spacing. A total program of 8000m is proposed. Holes are angled towards 045° or 225° magnetic at M1 and M3 and 120° where possible at M5 at declinations of -50°, to optimally intersect mineralised zones. All RC samples were weighed to determine recoveries. All potentially mineralised zones were then split and sampled at 1m intervals using three-tier riffle splitters. QA/QC procedures were completed as per industry best practice standards (certified blanks and standards and duplicate sampling).</p> <p>Samples were despatched to BIGS in Ouagadougou for sample preparation, where they were crushed, dried and pulverised to produce a sub sample for analysis. BIGS has a fire assay facility in Ouagadougou where 50g fire assays, AAS finishes and screen fire assays have been conducted. Historic sampling preparation and assaying was completed at Abilabs and SGS laboratories located in Ouagadougou. Historic samples we analysed by Fire Assay method with AAS finish.</p>
Drilling	<p>Drill type (e.g. core, reverse circulation, open- hole hammer, rotary air blast, auger, Bangka, sonic, etc.) and details (e.g. core diameter, triple or standard tube, depth of diamond tails, face- sampling bit or other type, whether core is oriented and if so, by what method, etc.).</p>	<p>Reverse Circulation "RC" drilling within the resource area comprises 4.5 inch diameter face sampling hammer and aircore blade drilling and hole depths range from 13m to 60m. Diamond drilling in progress comprises both NQ and HQ diameter core, at holes between 75m and 350m depth.</p>
Drill Sample Recovery	<p>Method of recording and assessing core and chip sample recoveries and results assessed.</p> <p>Measures taken to maximise sample recovery and ensure representative nature of the samples.</p> <p>Whether a relationship exists between sample recovery and grade and whether sample bias may have occurred due to preferential loss/gain of fine/coarse material.</p>	<p>RC recoveries are logged and recorded in the database. Overall recoveries are >75% for the RC; there are no significant sample recovery problems. A technician is always present at the rig to monitor and record recovery.</p> <p>RC samples were visually checked for recovery, moisture and contamination.</p> <p>The bulk of the Resource is defined by DD and RC drilling, which have high sample recoveries. The style of mineralisation, with common higher-grades, require large diameter core and good recoveries to evaluate the deposit adequately. The consistency of the mineralised intervals and density of drilling is considered to prevent any sample bias issues due to material loss or gain.</p>
Logging	<p>Whether core and chip samples have been geologically and geotechnical logged to a level of detail to support appropriate Mineral Resource estimation, mining studies and metallurgical studies.</p> <p>Whether logging is qualitative or quantitative in nature. Core (or costean/Trench, channel, etc.) photography.</p> <p>The total length and percentage of the relevant intersections logged.</p>	<p>Geotechnical logging was carried out on all diamond drill holes for recovery, RQD and number of defects (per interval). Information on structure type, dip, dip direction, alpha angle, beta angle, texture, shape, roughness and fill material is stored in the structure/Geotech table of the database.</p> <p>Logging of diamond core and RC samples recorded lithology, mineralogy, mineralisation, structural (DDH only), weathering, alteration, colour and other features of the samples. Core was photographed in both dry and wet form.</p> <p>All drilling has been logged to standard that is appropriate for the category of Resource which is being reported.</p>
Sub-Sampling Technique and Sample Preparation	<p>If core, whether cut or sawn and whether quarter, half or all core taken. If non-core, whether riffled, tube sampled, rotary split, etc. and whether sampled wet or dry.</p> <p>For all sample types, the nature, quality and appropriateness of the sample preparation technique.</p> <p>Quality control procedures adopted for all sub-sampling stages to maximise representivity of samples.</p> <p>Measures taken to ensure that the sampling is representative of the in situ material collected, including for instance results for field duplicate/second-half sampling.</p> <p>Whether sample sizes are appropriate to the grain size of the material being sampled.</p>	<p>RC samples were collected on the rig using a three tier riffle splitter. All samples were dry.</p> <p>The sample preparation for all samples follows industry best practice. BIGS in Ouagadougou for sample preparation, where they were crushed, dried and pulverised to produce a sub sample for analysis. Sample preparation involving oven drying, coarse crushing, followed by total pulverisation LM2 grinding mills to a grind size of 90% passing 75 microns.</p> <p>Field QC procedures involve the use of certified reference material as assay standards, blanks, and duplicates for the RC samples only. The insertion rate of these averaged 3:20 for RC.</p> <p>Field duplicates were taken on for both 1m RC splits using a riffle splitter. The sample sizes are considered to be appropriate to correctly represent the style of mineralisation, the thickness and consistency of the intersections.</p>

<p>Quality of Assay Data and Laboratory Tests</p>	<p>The nature, quality and appropriateness of the assaying and laboratory procedures used and whether the technique is considered partial or total. For geophysical tools, spectrometers, handheld XRF instruments, etc., the parameters used in determining the analysis including instrument make and model, reading times, calibrations factors applied and their derivation, etc. Nature of quality control procedures adopted (e.g. standards, blanks, duplicates, external laboratory checks) and whether acceptable levels of accuracy (i.e. lack of bias) and precision have been established.</p>	<p>The laboratory used an aqua regia digest followed by fire assay for with an AAS finish for gold analysis. No geophysical tools were used to determine any element concentrations used in this Resource Estimate. Sample preparation checks for fineness were carried out by the laboratory as part of their internal procedures to ensure the grind size of 90% passing 75 micron was being attained. Laboratory QA/QC involves the use of internal lab standards using certified reference material, blanks, splits and duplicates as part of the in house procedures. Certified reference materials, having a good range of values, were inserted blindly and randomly. Results highlight that sample assay values are accurate and that contamination has been contained. Repeat or duplicate analysis for samples shows that the precision of samples is within acceptable limits. Sample preparation conducted and fire assay performed by BIGS SARL -Assayed by 50g fire assay with AAS finish. QA/QC protocol: For diamond core one blank and one standard inserted for every 18 core samples (2 QA/QC samples within every 20 samples despatched, or 1 QA/QC sample per 10 samples despatched) and no duplicates. QA/QC protocol: For RC samples we insert one blank, one standard and one duplicate for every 17 samples (3 QA/QC within every 20 samples or 1 every 8.5 samples).</p>
<p>Verification of Sampling and Assaying</p>	<p>The verification of significant intersections by either independent or alternative company personnel. The use of twinned holes The verification of significant intersections by either independent or alternative company personnel. Discuss any adjustment to assay data</p>	<p>WAF's QP R. Hyde has verified significant intersections in diamond core and RC drilling. Primary data was collected using a set of company standard Excel™ templates on Toughbook™ laptop computers using lookup codes. The information was validated on-site by the Company's database technicians and then merged and validated into a final Access™ database by the company's database manager.</p>
<p>Location of Data points</p>	<p>Accuracy and quality of surveys used to locate drill holes (collar and down-hole surveys), trenches, mine workings and other locations used in Mineral Resource estimation. Specification of the grid system used Quality and adequacy of topographic control</p>	<p>All drill holes have been located by DGPS in UTM grid WGS84 Z30N. Down-hole surveys were completed at the end of every hole where possible using a Reflex down-hole survey tool, taking measurements every. DGPS was used for topographic control.</p>
<p>Data Spacing and Distribution</p>	<p>Data spacing for reporting of Exploration Results Whether the data spacing and distribution is sufficient to establish the degree of geological and grade continuity appropriate for the Mineral Resource and Ore Reserve estimation procedure(s) and classifications applied. Whether sample compositing has been applied</p>	<p>The nominal drill hole spacing is 20m (northwest) by 100m (northeast). The mineralised domains have demonstrated sufficient continuity in both geological and grade to support the definition of Mineral Resource and Reserves, and the classifications applied under the 2012 JORC Code. Historic samples have been composited to three metre lengths, and adjusted where necessary to ensure that no residual sample lengths have been excluded (best fit). WAF intends to update the Mankarga 5 Resource following the current work programs, in the first quarter of 2014.</p>
<p>Orientation of Data in Relation to Geological Structure</p>	<p>Whether the orientation of sampling achieves unbiased sampling of possible structures and the extent to which this is known, considering the deposit type. If the relationship between the drilling orientation and the orientation of key mineralised structures is considered to have introduced a sampling bias, this should be assessed and reported if material.</p>	<p>The majority of the data is drilled to either magnetic 120° or 300° orientations, which is orthogonal/perpendicular to the orientation of the mineralised trend. The bulk of the drilling is almost perpendicular to the mineralised domains. Structural logging based on oriented core indicates that the main mineralisation controls are largely perpendicular to drill direction. No orientation based sampling bias has been identified in the data at this point.</p>
<p>Sample Security</p>	<p>The measures taken to ensure sample security</p>	<p>Chain of custody is managed by WAF. Samples are stored on site and delivered by WAF personnel to BIGS Ouagadougou for sample preparation. Whilst in storage, they are kept under guard in a locked yard. Tracking sheets are used track the progress of batches of samples</p>
<p>Audits or reviews</p>	<p>The results of any audits or reviews of sampling techniques and data.</p>	<p>WAF personnel and consultants have completed numerous site visits and data reviews since acquiring the project in 2014. No material issues were noted. A technical report is located on WAF's website.</p>

Section 2 Reporting of Exploration Results		
Criteria	JORC Code Explanation	Commentary
Mineral Tenement and Land Tenure Status	Type, reference name/number, location and ownership including agreements or material issues with third parties such as joint ventures, partnerships, overriding royalties, native title interests, historical sites, wilderness or national park and environmental settings. The security of the tenure held at the time of reporting along with any known impediments to obtaining a licence to operate in the area.	The Boulsa Project tenements covers over 1,600km ² , granting the holders the right to explore for gold. The tenements have been acquired by either direct grant to WAF or its subsidiaries or by contractual agreements with tenement holders. All agreements provide WAF with the right to obtain an ultimate interest of 100%. All licences, permits and claims are granted for gold. All fees have been paid, and the permits are valid and up to date with the Burkinabe authorities. The payment of gross production royalties are provided for by the Mining Code and the amount of royalty to be paid for ranges from 3% (<US\$1000), 4% (\$1000-1300) and 5% (>\$1300).
Exploration Done by Other Parties	Acknowledgment and appraisal of exploration by other parties.	Very little exploration has been carried out over greater project the tenement prior to WAF's involvement which commenced in 2008, with the exception of the Tanlouka Permit. The area comprising the Tanlouka Permit has been held by Channel Resources Ltd since the early 1990's. Work recommenced in earnest on the Tanlouka Permit in 2010. WAF acquired Channel Resources Ltd on January 17th 2014. Available historic records and data were reviewed by both WAF during Due Diligence prior to the acquisition.
Geology	Deposit type, geological setting and style of mineralisation.	The Boulsa Project straddles some 70km strike length of the Manga-Sebba greenstone belt, which bifurcates and trends northeast and east-northeast respectively from southern-central Burkina Faso into Niger over some 450km. The south-eastern portion of the project area covers the southern extension of the Fada N'Gourma Belt. Lithologies comprise volcano-plutonic bodies including amphibolised basalts with amphiboloscists, andesites and basalts, rhyolites and rhyodacites, brecciated tuffs, and gabbroic bodies including pyroxenite and serpentinite. Gold mineralisation in the project area is mesothermal orogenic in origin and structurally controlled. The project also contains shear hosted porphyry related copper-gold-molybdenum mineralisation on the Sartenga Permit which is believed to be unique in West Africa."
Drill hole Information	A summary of all information material to the understanding of the exploration results including a tabulation of the following information for all Material drill holes: <ul style="list-style-type: none"> o easting and northing of the drill hole collar o elevation or RL (Reduced Level – elevation above sea level in metres) of the drill hole collar o dip and azimuth of the hole o down hole length and interception depth o hole length. <p>If the exclusion of this information is justified on the basis that the information is not Material and this exclusion does not detract from the understanding of the report, the Competent Person should clearly explain why this is the case.</p>	Intercepts that form the basis of this announcement are tabulated in Table 1 in the body of the announcement and incorporate Hole ID, Easting, Northing, Dip, Azimuth, Depth and Assay data for mineralised intervals. Appropriate maps and plans also accompany this announcement.
Data aggregation methods	In reporting Exploration Results, weighting averaging techniques, maximum and/or minimum grade truncations (e.g. cutting of high grades) and cut-off grades are usually Material and should be stated. Where aggregate intercepts incorporate short lengths of high grade results and longer lengths of low grade results, the procedure used for such aggregation should be stated and some typical examples of such aggregations should be shown in detail. The assumptions used for any reporting of metal equivalent values should be clearly stated.	All intersections are assayed on one meter intervals No top cuts have been applied to exploration results. Mineralised intervals are reported with a maximum of 2m of internal dilution of less than 0.2g/t Au. Higher grade zones are reported with a maximum of internal dilution of less than 2g/t Au of internal dilution. Mineralised intervals are reported on a weighted average basis.

Relationship between mineralisation widths and intercept lengths	<p>These relationships are particularly important in the reporting of Exploration Results.</p> <p>If the geometry of the mineralisation with respect to the drill hole angle is known, its nature should be reported.</p> <p>If it is not known and only the down hole lengths are reported, there should be a clear statement to this effect (e.g. 'down hole length, true width not known').</p>	<p>The orientation of the mineralised zone has been established and the majority of the drilling was planned in such a way as to intersect mineralisation in a perpendicular manner.</p> <p>However, due to topographic limitations some holes were drilled from less than ideal orientations.</p>
Diagrams	<p>Appropriate maps and sections (with scales) and tabulations of intercepts should be included for any significant discovery being reported. These should include, but not be limited to a plan view of drill hole collar locations and appropriate sectional views.</p>	<p>The appropriate plans and sections have been included in the body of this document.</p>
Balanced reporting	<p>Where comprehensive reporting of all Exploration Results is not practicable, representative reporting of both low and high grades and/or widths should be practiced to avoid misleading reporting of Exploration Results.</p>	<p>All grades, high and low, are reported accurately with "from" and "to" depths and "hole identification" shown.</p>
Other substantive exploration data	<p>Other exploration data, if meaningful and material, should be reported including (but not limited to): geological observations; geophysical survey results; geochemical survey results; bulk samples – size and method of treatment; metallurgical test results; bulk density, groundwater, geotechnical and rock characteristics; potential deleterious or contaminating substances.</p>	<p>Preliminary metallurgical test work has been completed, with excellent results. Gold recoveries exceed 95% from oxide bottle roll tests, exceed 92% for sulphide bottle roll tests and a significant proportion of the gold is recoverable by gravity concentration. Additional metallurgical test work is planned.</p>
Further work	<p>The nature and scale of planned further work (e.g. tests for lateral extensions or depth extensions or large-scale step-out drilling).</p> <p>Diagrams clearly highlighting the areas of possible extensions, including the main geological interpretations and future drilling areas, provided this information is not commercially sensitive.</p>	<p>Further infill drilling is planned and is ongoing, aimed at increasing the amount of resource categorized as Indicated, as well as upgrading some of the Indicated Resource to Measured status. Drilling aimed at increasing the Resource below the current depth extent is also planned. A figure showing proposed work programs is included in the body of this report.</p>