

# Corporate Presentation

Sydney 14 June 2016

Bruce Kay

*Technical  
Director*



**catalyst**  
**METALS LTD**

# Competent Persons Statement



## Competent Person's Statement

The information in this report that relates to exploration results is based on information compiled by Mr Bruce Kay, a Competent Person, who is a Fellow of the Australasian Institute of Mining and Metallurgy. Mr Kay is a non-executive director of the Company and has sufficient experience that is relevant to the style of mineralisation and type of deposit under consideration and to the activity being undertaken to qualify as a Competent Person as defined in the 2012 Edition of the Australasian Code for Reporting of Exploration Results, Mineral Resources and Ore Reserves (the JORC Code). Mr Kay consents to the inclusion in the report of the matters based on his information in the form and context in which it appears.

Much of the historical information relating to the Four Eagles project was prepared and first disclosed under the JORC Code 2004. This information has not been updated since to comply with the JORC Code 2012 on the basis that the information has not materially changed since it was reported.

Information relating to the Tandarra, Sebastian and Raydarra projects was first disclosed by previous tenement holders under the JORC Code 2004. This information has been subsequently reported by the Company in accordance with the JORC Code 2012, refer to announcement dated 1 September 2014 and the Quarterly Activities Report dated 31 July 2014.

# Company Objectives



- ▲ Develop assets with strong upside potential
- ▲ Enhance value via professional exploration
- ▲ Make a major gold discovery
- ▲ Become dominant in a world class gold province

*“Dominate the Region”*

# Catalyst Capital Structure



## Capital Structure (ASX: CYL, CYLO)

- ▲ **54,729,004 fully paid ordinary shares**
  - 350,000 unlisted Performance Rights
- ▲ **2,623,184 listed options @ 50c (30 June 2018)**
- ▲ **Top 20 control approximately 70% of issued capital**

## Cash in hand

- ▲ **A\$1.0 million (at 31 March 2016)**
- ▲ **Capital raising of \$770,000 by Paradigm Securities on 7 April 2016**

## Market Capitalisation

- ▲ **A\$32 million (at 60 cents per share)**

## Non-Executive Directors

### ▲ Bruce Kay

- Former Head of Worldwide Exploration for Normandy Mining and Newmont

### ▲ Stephen Boston

- Former Stockbroker and current Principal of Perth based private investment group

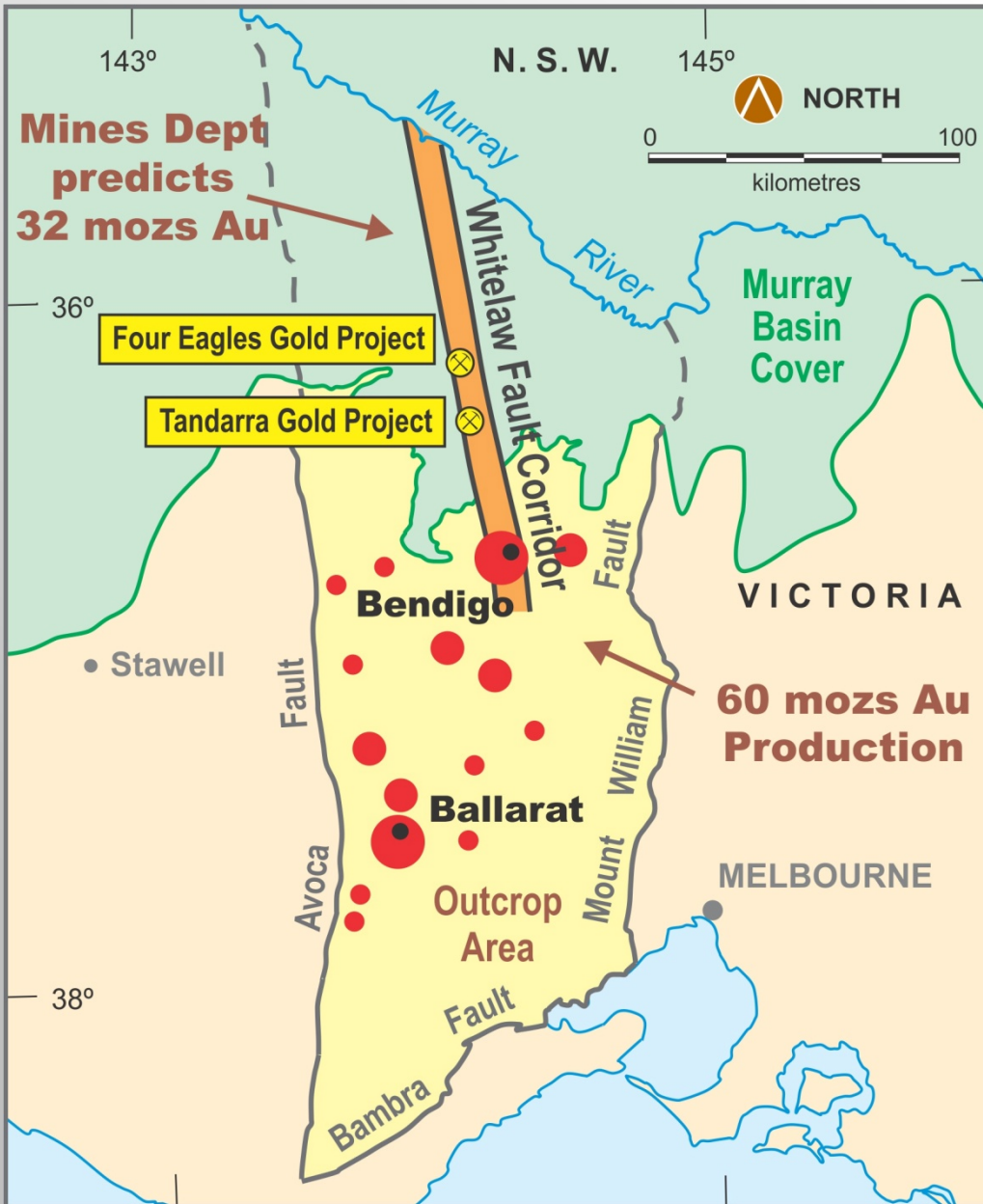
### ▲ Robin Scrimgeour

- Former banker in London, Tokyo, Hong Kong and Singapore

### ▲ Gary Schwab

- Certified Practising accountant, former Executive Director of private Australian based commodity Company

# Victorian Gold

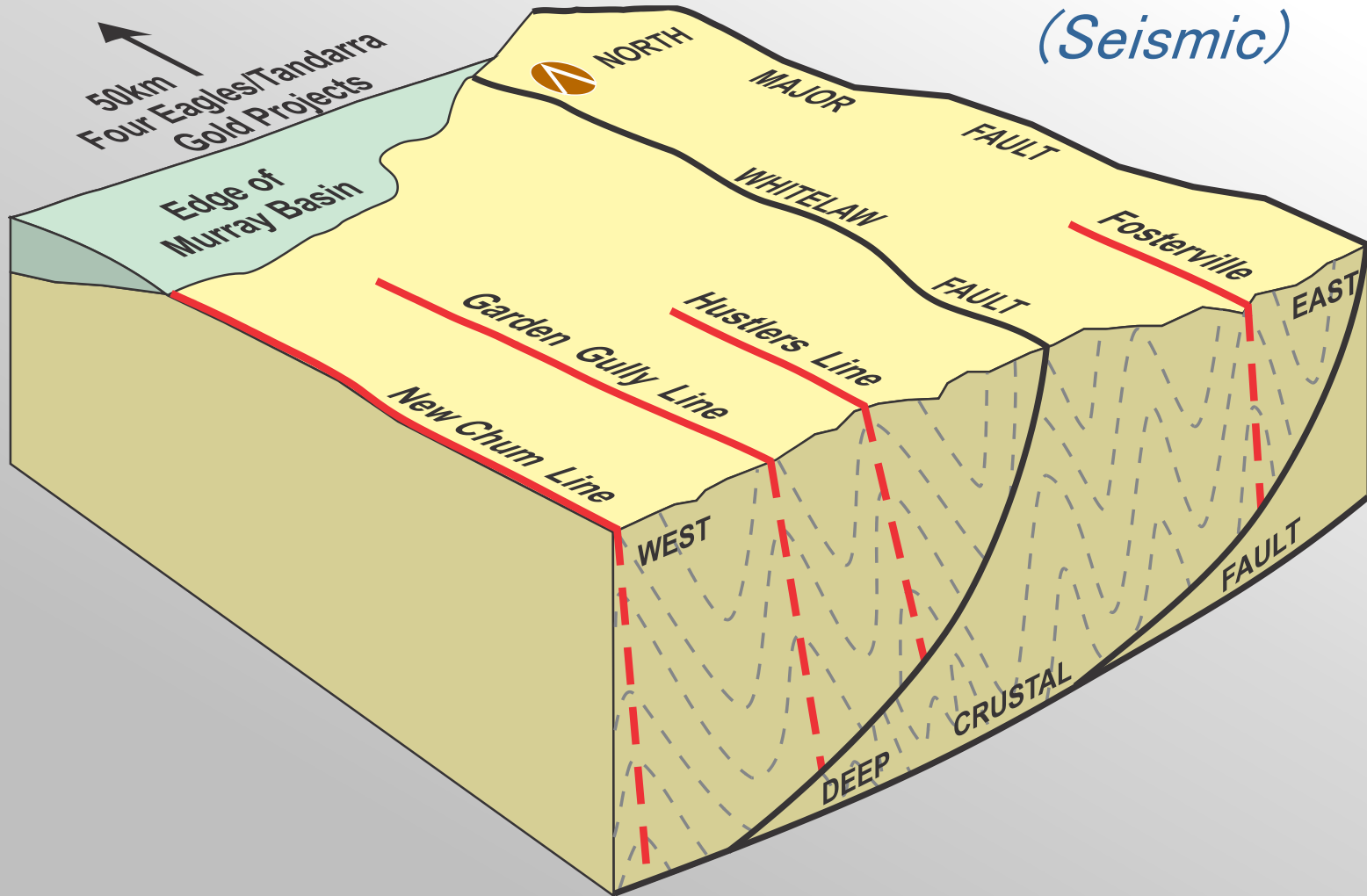


- ▲ Bendigo Australia's 2nd largest goldfield (22 mozs)
- ▲ Whitelaw Fault controls gold mineralisation
- ▲ Mines Dept predicts 32 mozs covered by Murray Basin Sediments

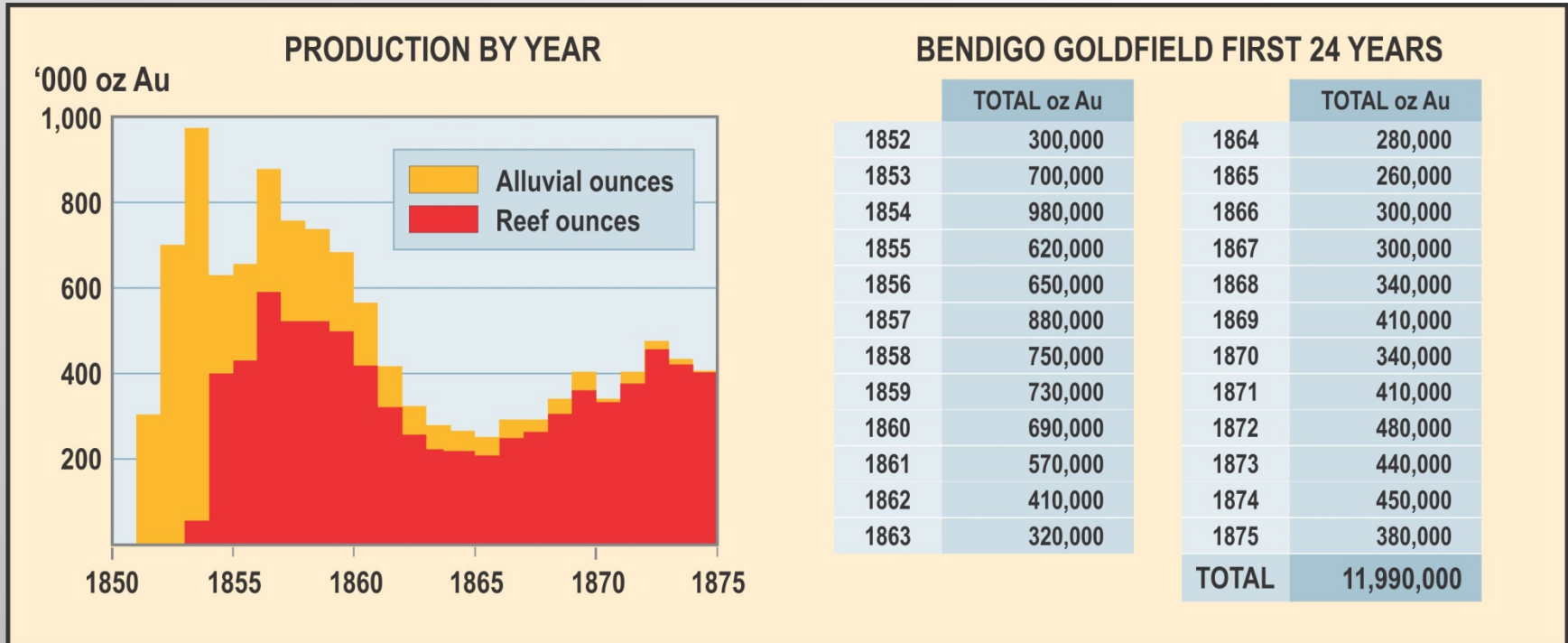
## Total Gold Production

- > 10 million ounces (2)
- > 1 million ounces (5)
- > 300,000 ounces

# Whitelaw Fault Interpretation



# Bendigo: Historic Gold Production

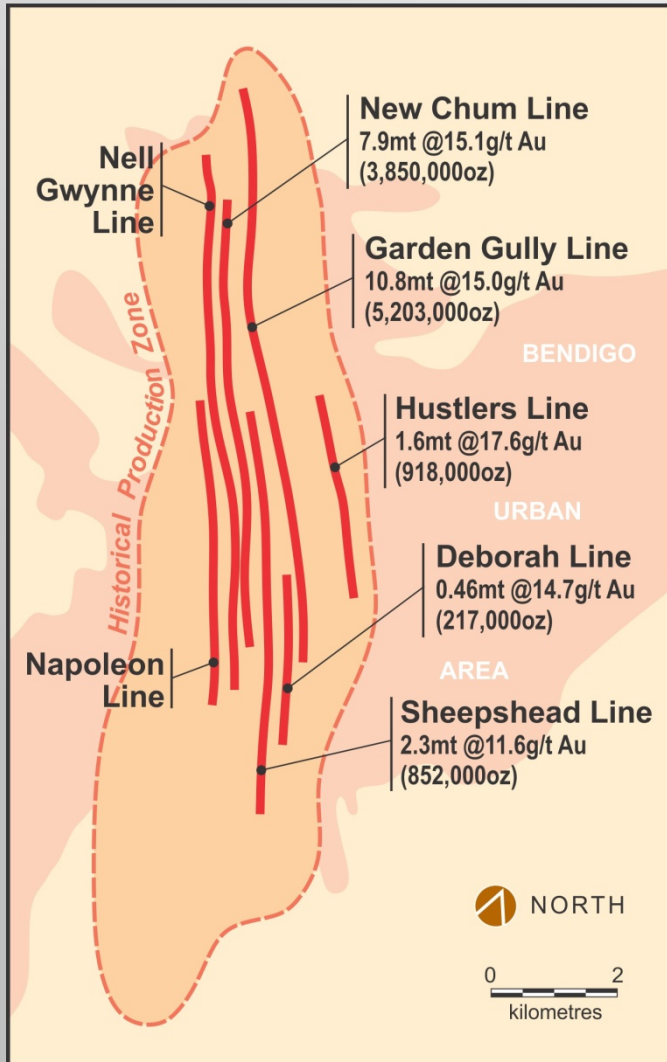


**Historical gold production 22 million ounces:**

- ▲ Estimated 30,000 to 50,000 ounces per vertical metre
- ▲ Every 100 metres contained 3-5 million ounces
- ▲ Largest gold producer in world from 1850 to 1890
- ▲ Approximately 12 million ounces in first 24 years



# Bendigo: A World Class Gold Field



## Bendigo Goldfield Historical Gold Production from Lines of Lodes

- ▲ 18 moz of reef gold
- ▲ 4 moz of alluvial gold
- ▲ Est 7 mozs gold in top 200m
- ▲ Gold mineralisation footprint dwarfs the Kalgoorlie Super Pit



# Finding the Next Bendigo

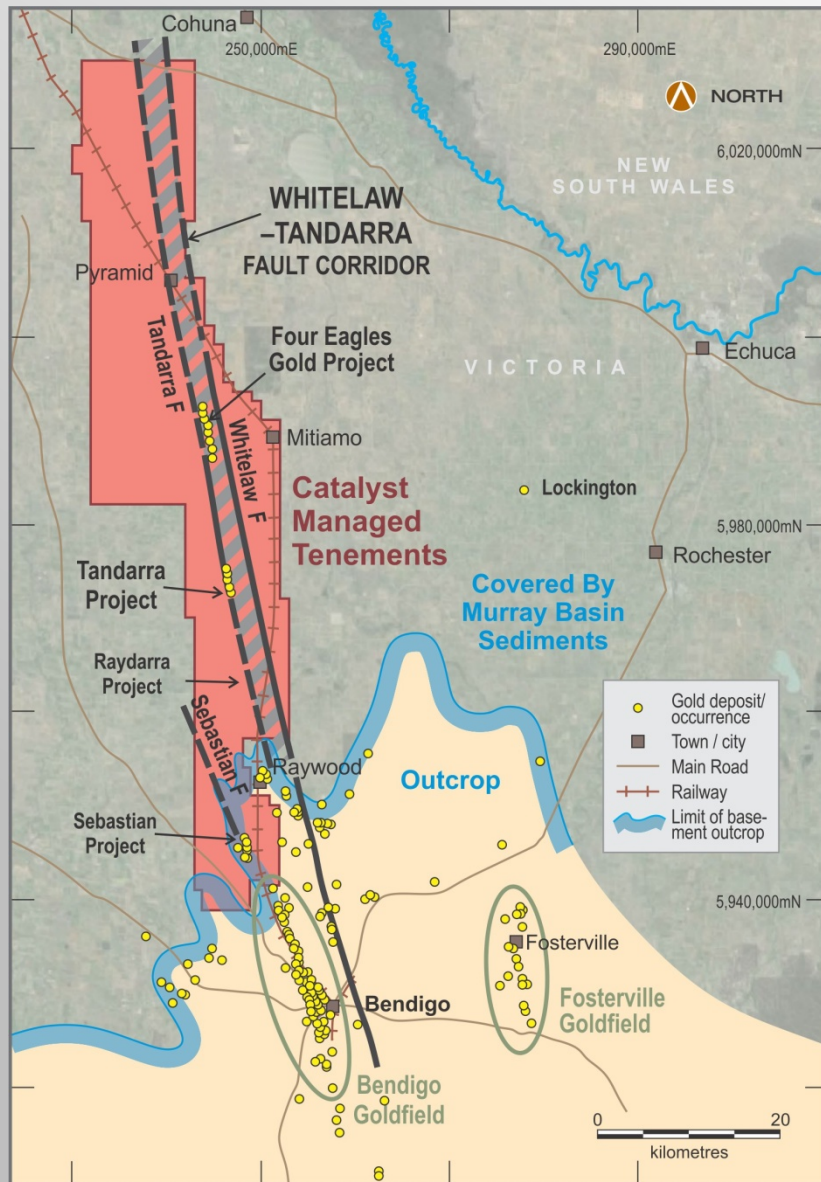


- ▲ **Recognising this major geological opportunity**
- ▲ **Manage the entire Whitelaw Gold Corridor**
- ▲ **Using world-class exploration techniques**
- ▲ **Strong JV partner GEV (sub of Hancock Prospecting PL)**
- ▲ **High grade gold at Four Eagles and Tandarra**
- ▲ **Excellent infrastructure and gold plants in district**

# Control of Entire Whitelaw Gold Corridor



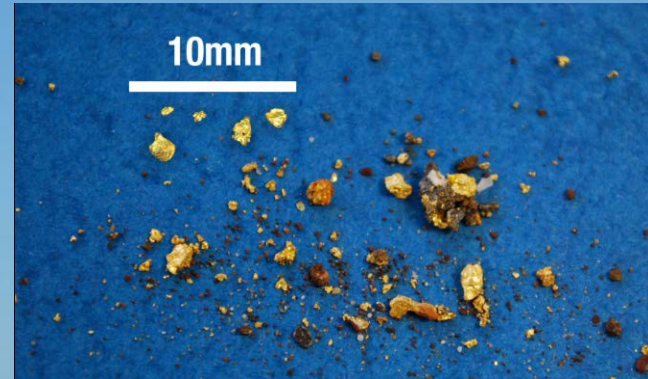
**catalyst**  
METALS LTD



- ▲ Bendigo produced 22 million ounces of gold at 15g/t Au
- ▲ Gold corridor continues north of Bendigo
- ▲ Totally concealed by younger sediments
- ▲ Whitelaw Fault controls gold

*If there is a gold deposit north of Bendigo, Catalyst will be major recipient!*

# Gold beneath the wheat fields



10.0m @ 17.9g/t Au (ACT015)  
6.0m @ 82.7g/t Au (FE328)  
3.0m @ 154g/t Au (FE732)  
3.0m @ 36.6g/t Au (FE415)  
3.0m @ 59.2g/t Au (FE633)  
3.0m @ 20.5g/t Au (FE592)  
6.0m @ 16.3g/t Au (FE696)

# ‘Lifting the Cover’ 2011–2016



- ▲ Control of entire Whitelaw Gold Corridor
- ▲ Gravity and Seismic reveal basement structures
- ▲ Pathfinder geochemistry defines gold trends
- ▲ Air Core drilling at Four Eagles and Tandarra
- ▲ GEV clout enables major drilling programme

*“Potential for both shallow open pit and large primary lode gold discoveries”*

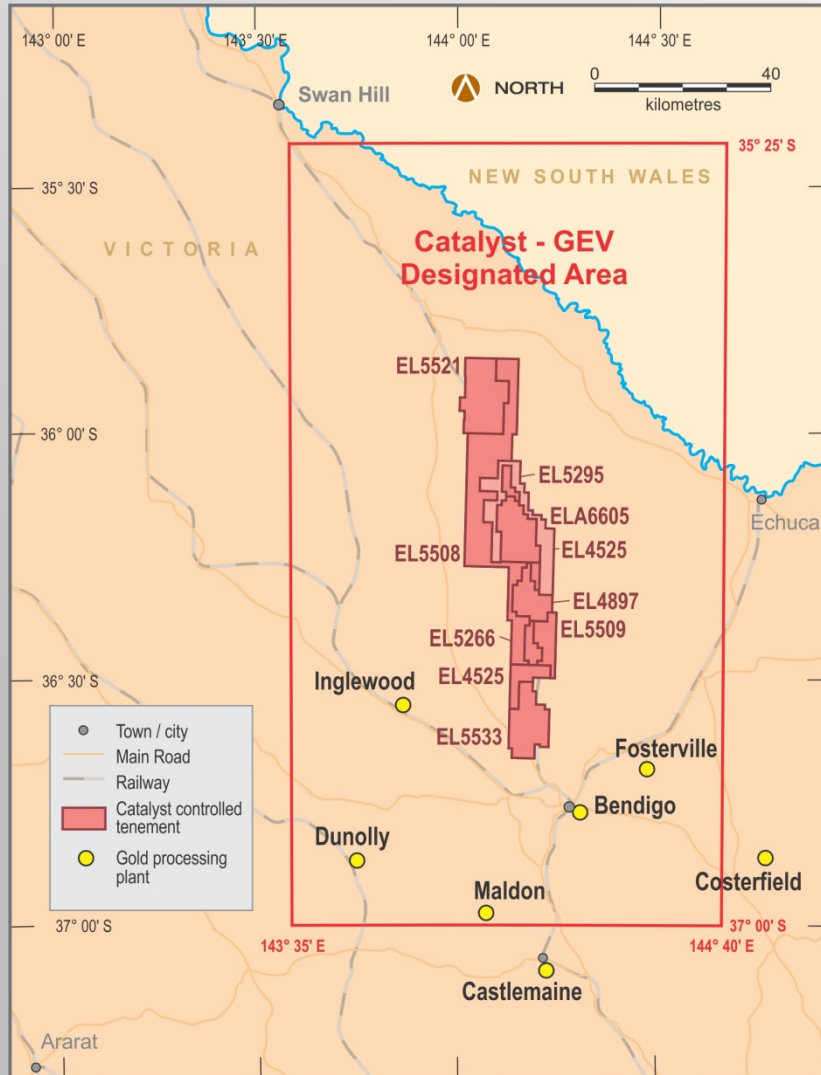
# ‘Lifting the Cover’ 2011–2016



- ▲ Ownership and farm-ins over 1,066km<sup>2</sup>
- ▲ Catalyst 100% tenements 340km<sup>2</sup>
- ▲ Tandarra (CYL earning 51%) 59km<sup>2</sup>
- ▲ Four Eagles JV – CYL 50% carried 641km<sup>2</sup>
- ▲ Four Eagles Gold Project well developed
- ▲ Tandarra advanced project

*“Geophysics and drilling results  
so far very encouraging”*

# Catalyst GEV Designated Cooperation Area



## Catalyst GEV Earn-in

- ▲ Large designated area with GEV established
- ▲ Catalyst manages programme and maintains 50% equity
- ▲ GEV spends \$4.2 million to earn 50% from Providence
- ▲ Excellent infrastructure: Six gold plants in district

# Four Eagles Gold Project JV 2011



## Initial Catalyst Providence JV

- ▲ Signed January 2011
- ▲ \$2.1 m to earn 50%
- ▲ Totally concealed by Cover
- ▲ 3 gold intersections > 1g/t Au

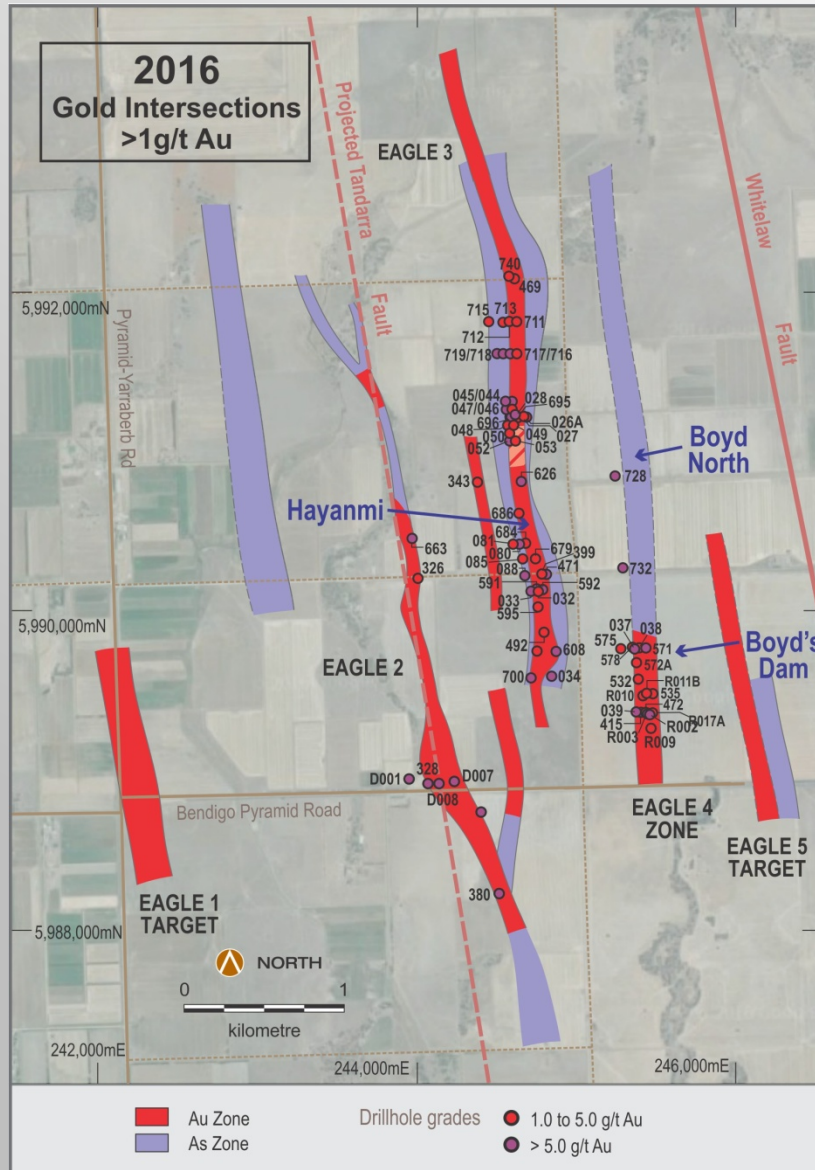


# Four Eagles Gold Project JV 2016



**catalyst**  
METALS LTD

## Catalyst GEV Providence JV



- ▲ Four Gold trends defined
- ▲ Advanced projects defined
- ▲ Hayanmi now 2.9 kms long
- ▲ 67 gold intersections > 1g/t Au

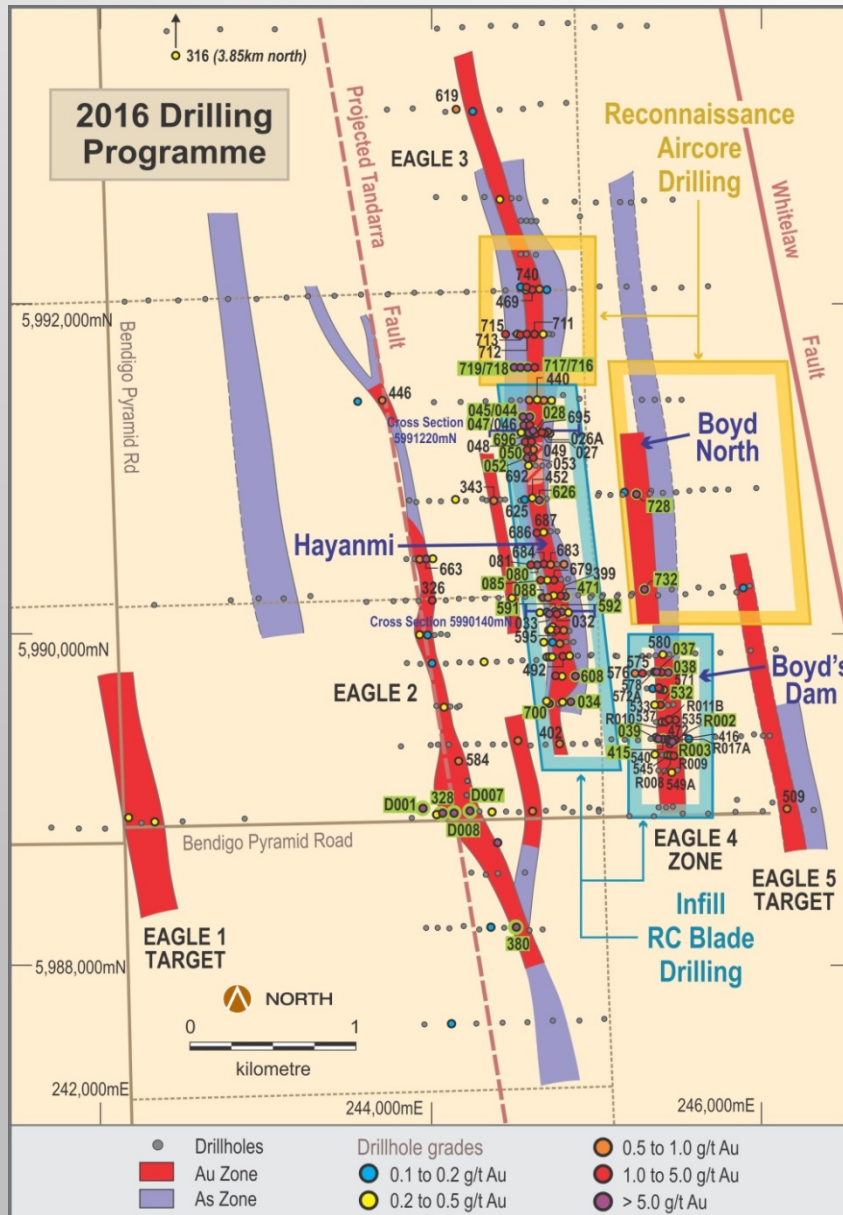
# Four Eagles Gold Project: Summary



## *Large areas of gold potential in shallow basement*

- ▲ **Three prospects defined with high grades**
  - Hayanmi – high grade gold over 2kms
  - Boyd's Dam – gold over 0.8 km
  - Boyd North – gold over 0.7 km
- ▲ **Discovery Trend still untested**
- ▲ **40 kilometres of Whitelaw trend still unexplored**

# 2016 Drilling Programme



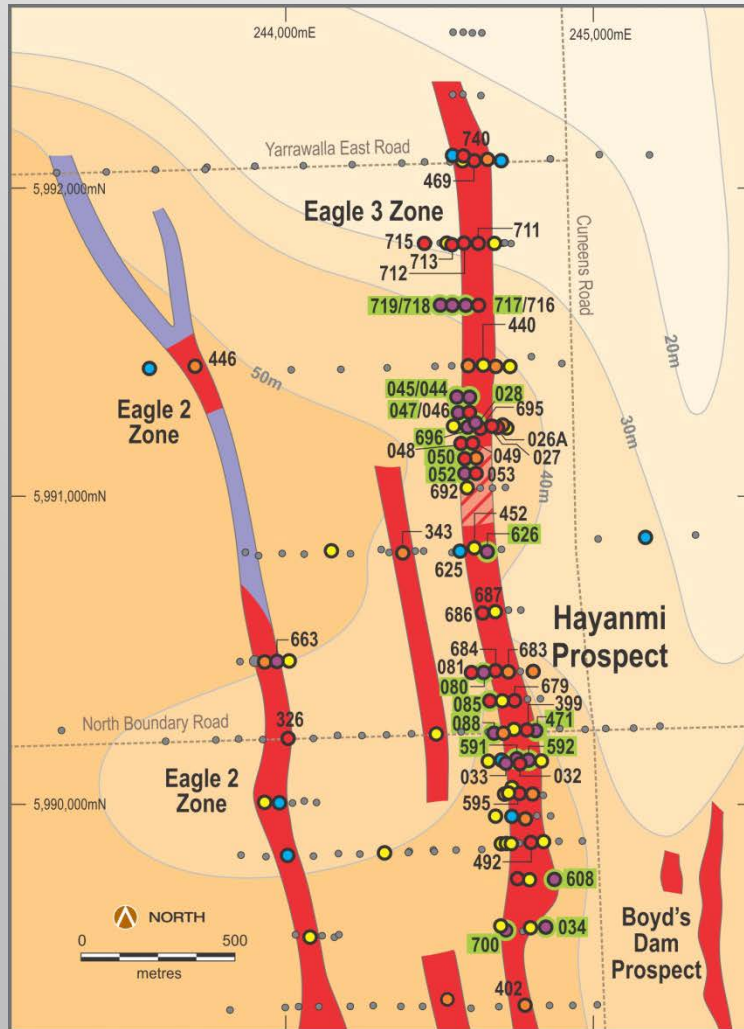
## Drillhole Intersections (>0.8g/t Au)

FEDD001	3.7m @ 4.7g/t Au from 170m	FE679	3.0m @ 2.86g/t Au from 75m
FEDD007	incl. 0.8m @ 17.5g/t Au from 173m	FE681	6.0m @ 0.91g/t Au from 72m
FEDD008	0.4m @ 8.4g/t Au from 168m	FE684	3.0m @ 2.57g/t Au from 84m
FERC002	and 0.75m @ 15.3g/t Au from 170m	FE686	3.0m @ 1.23g/t Au from 120m
FEDD008	0.4m @ 152g/t Au from 150m	FE695	2.0m @ 1.45g/t Au from 91m
FERC002	2m @ 1.8g/t Au from 67m	FE696	41m @ 3.87g/t Au from 76m
FERC003	and 1m @ 18.3g/t Au from 127m		incl. 6.0m @ 16.3g/t Au from 76m
FERC009	2m @ 6.2g/t Au from 49m		and 28m @ 2.03g/t Au from 90m
FERC009	3.0m @ 1.02g/t Au from 87m	FE700	13m @ 2.60g/t Au from 135m
	and 1.0m @ 1.41g/t Au from 92m		incl. 5.0m @ 5.7g/t Au from 135m
	and 1.0m @ 3.56g/t Au from 96m		
FERC010	6.0m @ 3.77g/t Au from 44m		
FERC011B	and 6.0m @ 1.11g/t Au from 79m		
	1.0m @ 1.45g/t Au from 66m		
FERC017A	and 2.0m @ 3.58g/t Au from 87m	FE711	1.0m @ 1.23g/t Au from 116m
	1.0m @ 3.29g/t Au from 79m	FE712	9.0m @ 1.24g/t Au from 72m
	and 3.0m @ 1.57g/t Au from 106m	FE713	8.0m @ 1.23g/t Au from 70m
	and 1.0m @ 1.39g/t Au from 113m	FE715	1.0m @ 2.92g/t Au from 71m
FE326	1.5m @ 1.81g/t Au from 114m	FE716	3.0m @ 1.04g/t Au from 99m
FE328	6m @ 82.7g/t Au from 123m	FE717	9.0m @ 5.71g/t Au from 108m
FE343	3m @ 3.34g/t Au from 111m	FE718	3.0m @ 13.4g/t Au from 99m
FE380	3m @ 9.71g/t Au from 120m	FE719	18.0m @ 1.16g/t Au from 60m
FE399	3.0m @ 1.42g/t Au from 66m		and 3.0m @ 9.2g/t Au from 147m
FE415	6.0m @ 2.6g/t Au from 45m	FE728	1.0m @ 6.24g/t Au from 85m
	and 3.0m @ 36.6g/t Au from 57m	FE732	3.0m @ 154g/t Au from 96m
FE469	3.0m @ 1.23g/t Au from 36m	FE740	3.0m @ 1.55g/t Au from 54m
FE471	3.0m @ 5.96g/t Au from 75m	FERC026A	1.0m @ 4.88g/t Au from 97m
	and 3.0m @ 1.33g/t Au from 81m		and 4.0m @ 2.53g/t Au from 127m
FE472	3.0m @ 1.2g/t Au from 45m	FERC027	5.0m @ 2.71g/t Au from 100m
	and 3.0m @ 2.32g/t Au from 63m	FERC028	1.0m @ 5.95g/t Au from 76m
FE492	3.0m @ 1.2g/t Au from 75m	FERC032	3.0m @ 2.22g/t Au from 129m
FE532	3.0m @ 2.1g/t Au from 96m	FERC033	4.0m @ 2.92g/t Au from 102m
FE535	3.0m @ 1.37g/t Au from 63m	FERC034	3.0m @ 11.2g/t Au from 127m
FE572A	3.0m @ 1.74g/t Au from 51m	FERC037	1.0m @ 10.55g/t Au from 66m
FE575	3.0m @ 4.9g/t Au from 66m		and 2.0m @ 1.3g/t Au from 83m
FE578	3.0m @ 1.14g/t Au from 60m	FERC038	16.0m @ 2.0g/t Au from 80m
FE579	9.0m @ 2.33g/t Au from 48m	FERC039	8.0m @ 3.65g/t Au from 66m
FE579	and 3.0m @ 1.23g/t Au from 78m		inc 1.0m @ 12.35g/t from 66m
FE584	3.0m @ 0.88g/t Au from 117m		inc 1.0m @ 10.05g/t Au from 71m
FE591	3.0m @ 14.7g/t Au from 87m	FERC044	2.0m @ 25.7g/t Au from 93m
FE592	9.0m @ 7.9g/t Au from 87m		and 1.0m @ 37g/t Au from 109m
	incl. 3.0m @ 1.26g/t Au from 87m	FERC045	2.0m @ 10.6g/t Au from 81m
	incl. 3.0m @ 20.5g/t Au from 90m	FERC046	4.0m @ 1.33g/t Au from 70m
	and 3.0m @ 1.94g/t Au from 93m	FERC047	2.0m @ 7.7g/t Au from 127m
FE595	3.0m @ 2.33g/t Au from 126m	FERC048	1.0m @ 1.1g/t Au from 107m
FE606	3.0m @ 1.39g/t Au from 102m	FERC049	1.0m @ 1.94g/t Au from 122m
FE608	3.0m @ 9.1g/t Au from 108m	FERC050	6.0m @ 4.4g/t Au from 97m
FE619	3.0m @ 0.8g/t Au from 45m	FERC052	8.0m @ 6.72g/t Au from 83m
FE623	3.0m @ 0.83g/t Au from 33m	FERC053	2.0m @ 1.42g/t Au from 114m
FE626	1.5m @ 12.9g/t Au from 52.5m	FERC080	1.0m @ 7.13g/t Au from 147m
FE648	1.5m @ 1.0g/t Au from 82.5m	FERC081	1.0m @ 1.22g/t Au from 142m
FE649	4.5m @ 1.0g/t Au from 97.5m	FERC085	16.0m @ 1.26g/t Au from 94m
FE663	3.0m @ 59g/t Au from 102m		inc. 1.0m @ 9.54g/t Au from 109m
	and 3.0m @ 7.0g/t Au from 102m	FERC088	1.0m @ 103.0g/t Au from 149m

# Hayanmi Trend



**catalyst**  
METALS LTD



## LEGEND

- Drillholes
- Au Zone
- As Zone

## Drillhole grades

- 0.1 to 0.2 g/t Au
- 0.2 to 0.5 g/t Au
- 0.5 to 1.0 g/t Au
- 1.0 to 5.0 g/t Au
- > 5.0 g/t Au

## Depth to Basement

- < 20 metres
- 20 - 30 metres
- 30 - 40 metres
- 40 - 50 metres
- > 50 metres

## Hayanmi Trend

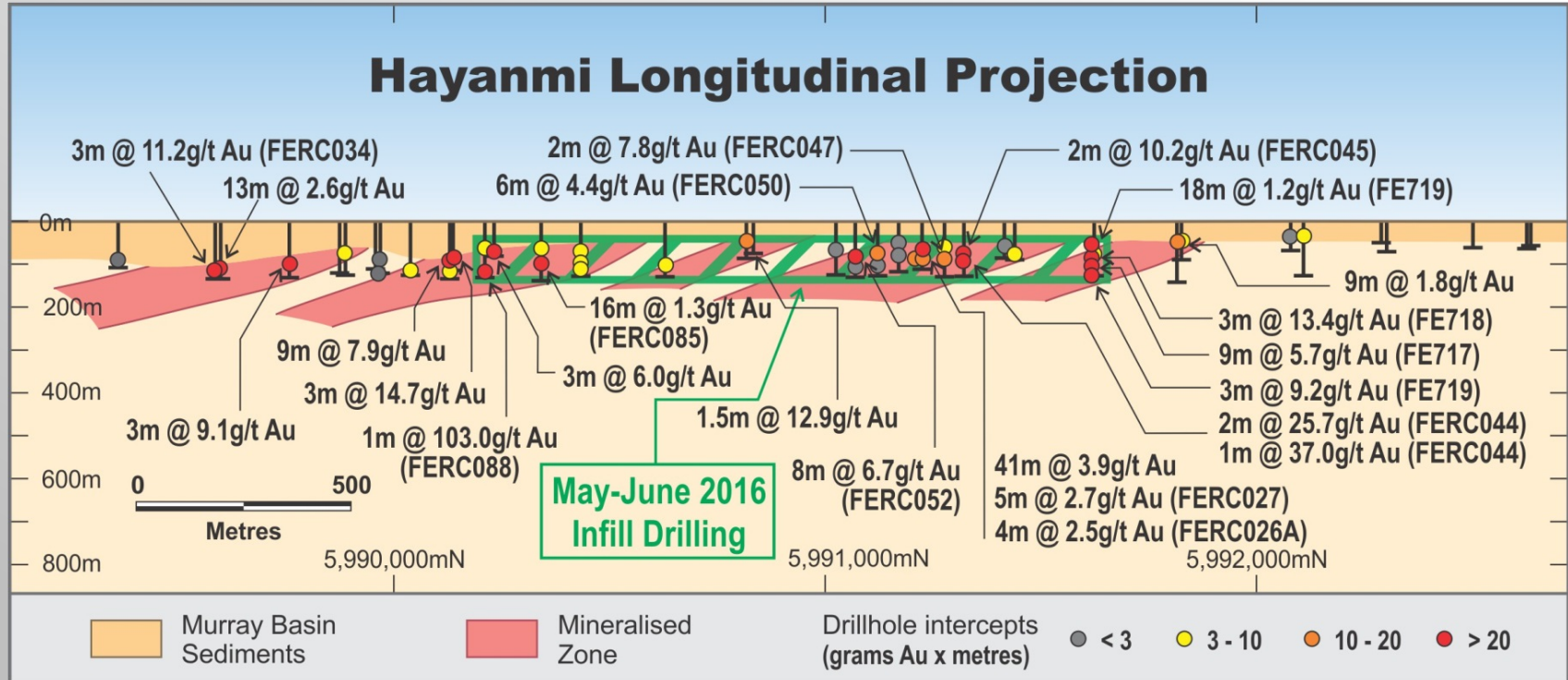
### Significant Drillhole Intersections (>1.0g/t Au)

FE343	3.0m @ 3.43g/t Au from 111m
FE399	3.0m @ 1.42g/t Au from 66m
FE469	3.0m @ 1.23g/t Au from 36m
FE471	3.0m @ 5.96g/t Au from 75m
and	3.0m @ 1.33g/t Au from 81m
FE492	3.0m @ 1.2g/t Au from 75m
FE591	3.0m @ 14.7g/t Au from 87m
FE592	9.0m @ 7.9g/t Au from 87m
incl.	3.0m @ 20.5g/t Au from 90m
FE595	3.0m @ 2.33g/t Au from 126m
FE608	3.0m @ 9.1g/t Au from 108m
FE626	1.5m @ 12.9g/t Au from 52.5m
FE679	3.0m @ 2.86g/t Au from 75m
FE684	3.0m @ 2.57g/t Au from 84m
FE686	3.0m @ 1.23g/t Au from 120m
FE695	2.0m @ 1.45g/t Au from 91m
FE696	41m @ 3.87g/t Au from 76m
incl.	6.0m @ 16.3g/t Au from 76m
and	28m @ 2.03g/t Au from 90m
FE700	13m @ 2.60g/t Au from 135m
incl.	5.0m @ 5.76g/t Au from 135m

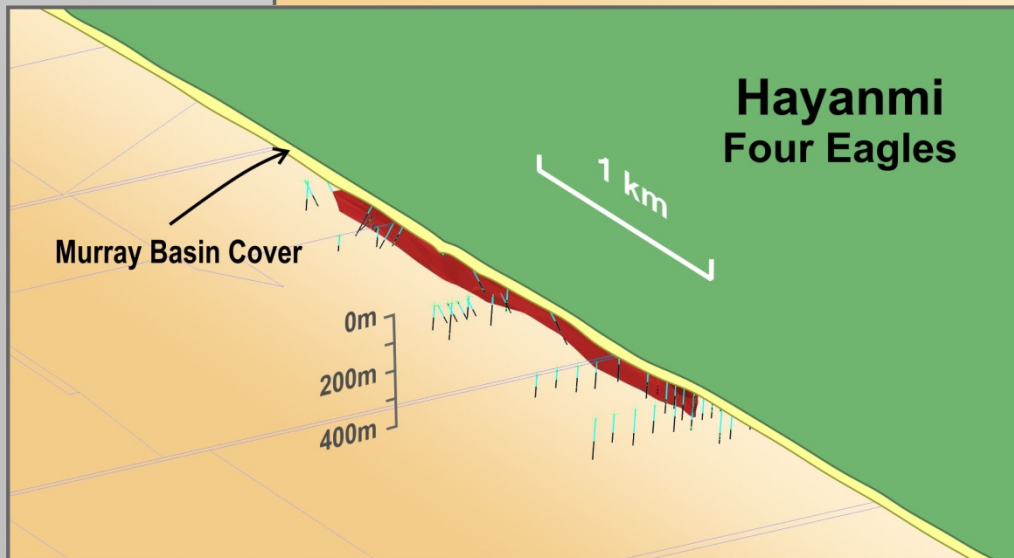
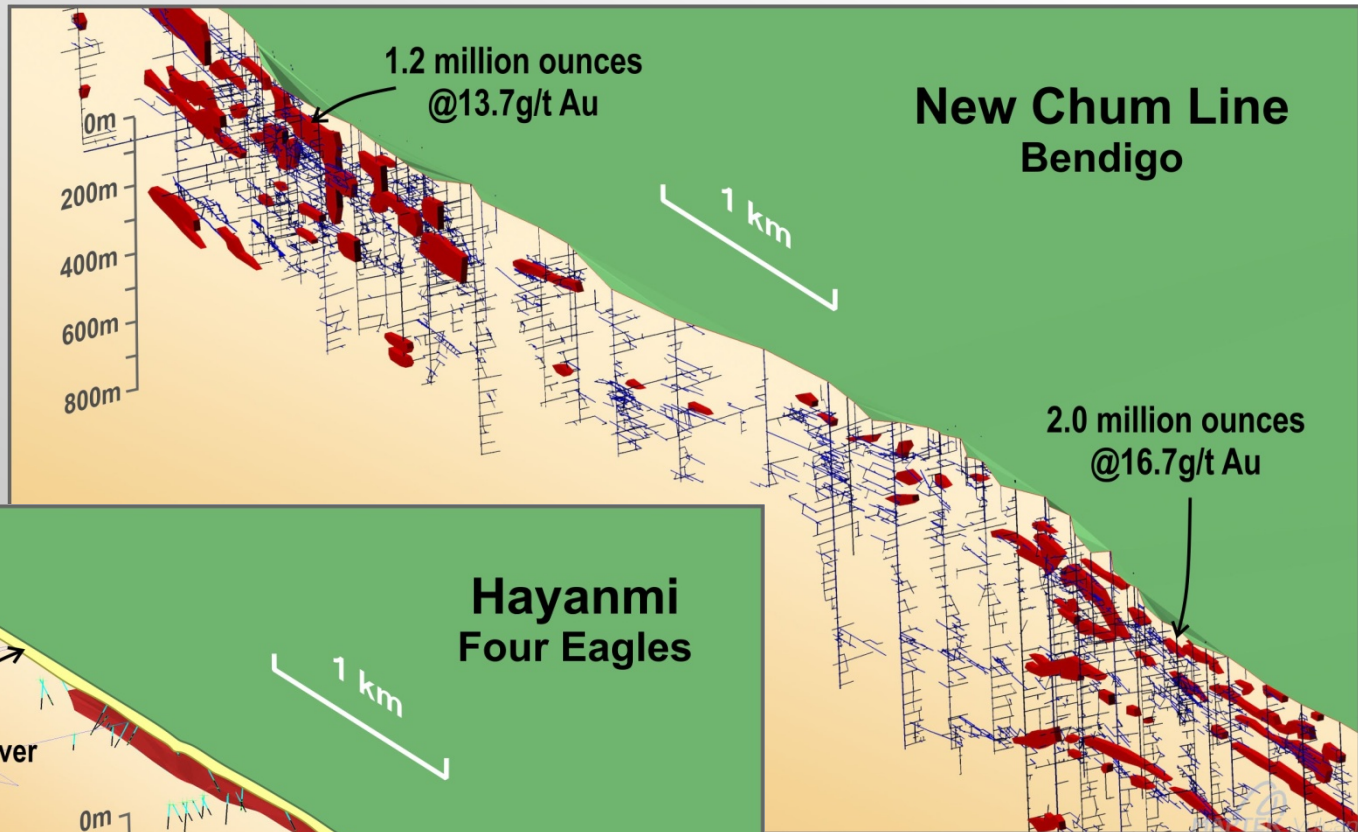
### Recent Intersections

FE711	1.0m @ 1.23g/t Au from 116m
FE712	9.0m @ 1.24g/t Au from 72m
FE713	8.0m @ 1.23g/t Au from 70m
FE715	1.0m @ 2.92g/t Au from 71m
FE716	3.0m @ 1.04g/t Au from 99m
FE717	9.0m @ 5.71g/t Au from 108m
FE718	3.0m @ 13.4g/t Au from 99m
FE719	18.0m @ 1.16g/t Au from 60m
and	3.0m @ 9.2g/t Au from 147m
FE740	3.0m @ 1.55g/t Au from 54m
FERC026A	1.0m @ 4.88g/t Au from 97m
and	4.0m @ 2.53g/t Au from 127m
FERC027	5.0m @ 2.71g/t Au from 100m
FERC028	1.0m @ 5.95g/t Au from 76m
FERC032	3.0m @ 2.22g/t Au from 129m
FERC033	4.0m @ 2.92g/t Au from 102m
FERC034	3.0m @ 11.2g/t Au from 127m
FERC044	2.0m @ 25.7g/t Au from 93m
and	1.0m @ 37g/t Au from 109m
FERC045	2.0m @ 10.6g/t Au from 81m
FERC046	4.0m @ 1.33g/t Au from 70m
FERC047	2.0m @ 7.76g/t Au from 127m
FERC048	1.0m @ 1.1g/t Au from 107m
FERC049	1.0m @ 1.94g/t Au from 122m
FERC050	6.0m @ 4.4g/t Au from 97m
FERC052	8.0m @ 6.72g/t Au from 83m
FERC053	2.0m @ 1.42g/t Au from 114m
FERC080	1.0m @ 7.13g/t Au from 147m
FERC081	1.0m @ 1.22g/t Au from 142m
FERC085	16.0m @ 1.26g/t Au from 94m
inc.	1.0m @ 9.54g/t Au from 109m
FERC088	1.0m @ 103.0g/t Au from 149m

# Hayanmi Longitudinal Projection



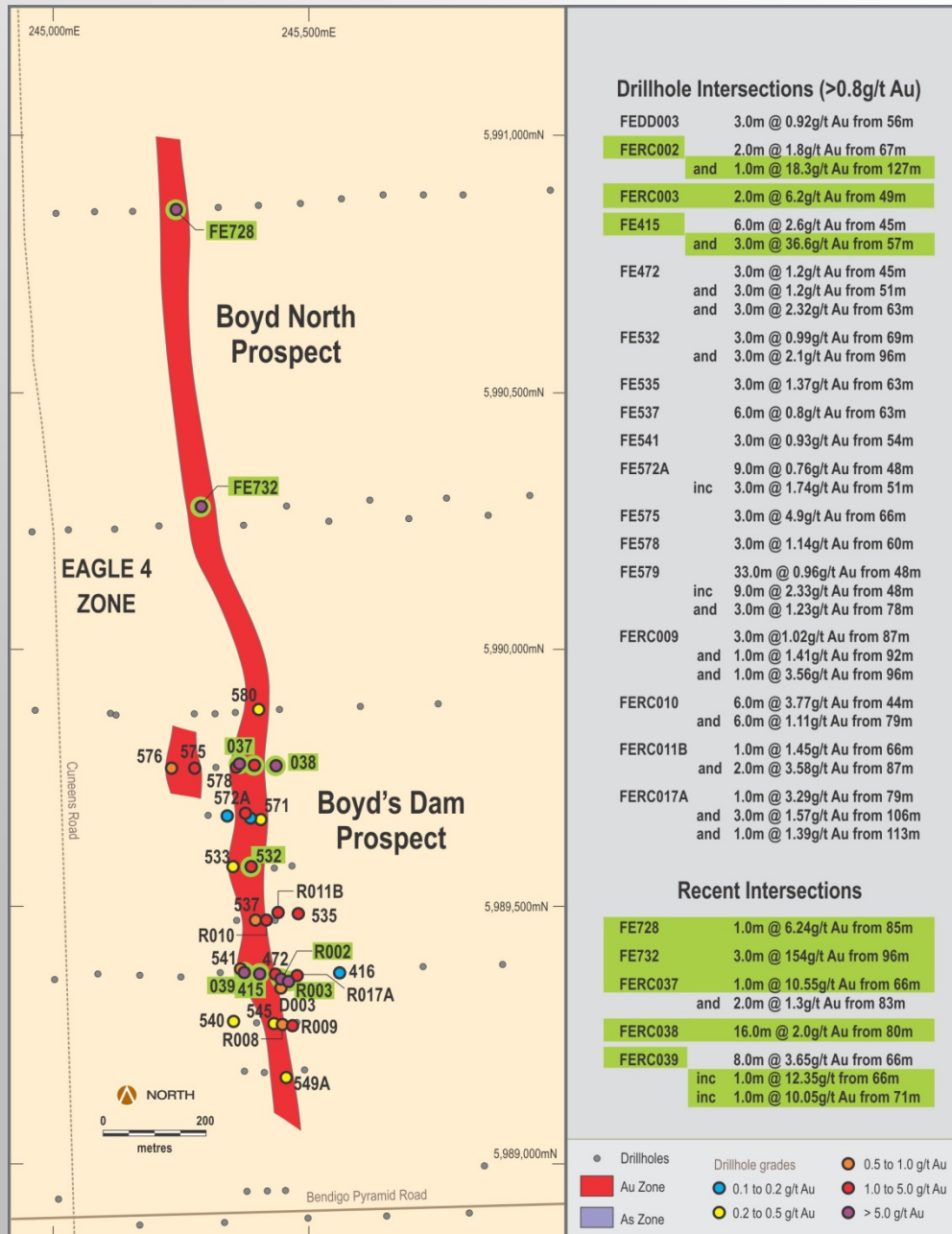
# Hayanmi vs New Chum Bendigo



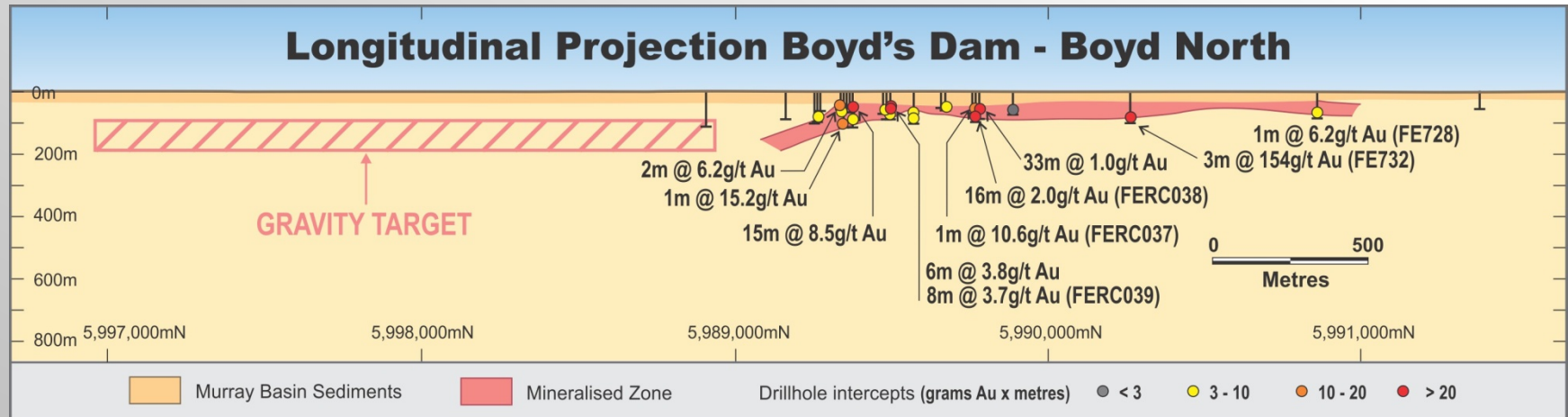
# Boyd's Trend

▲ New Zone at Boyd North; basement 20-40m

▲ Potential extension to south based on gravity interpretation



# Boyd's Trend Long Projection





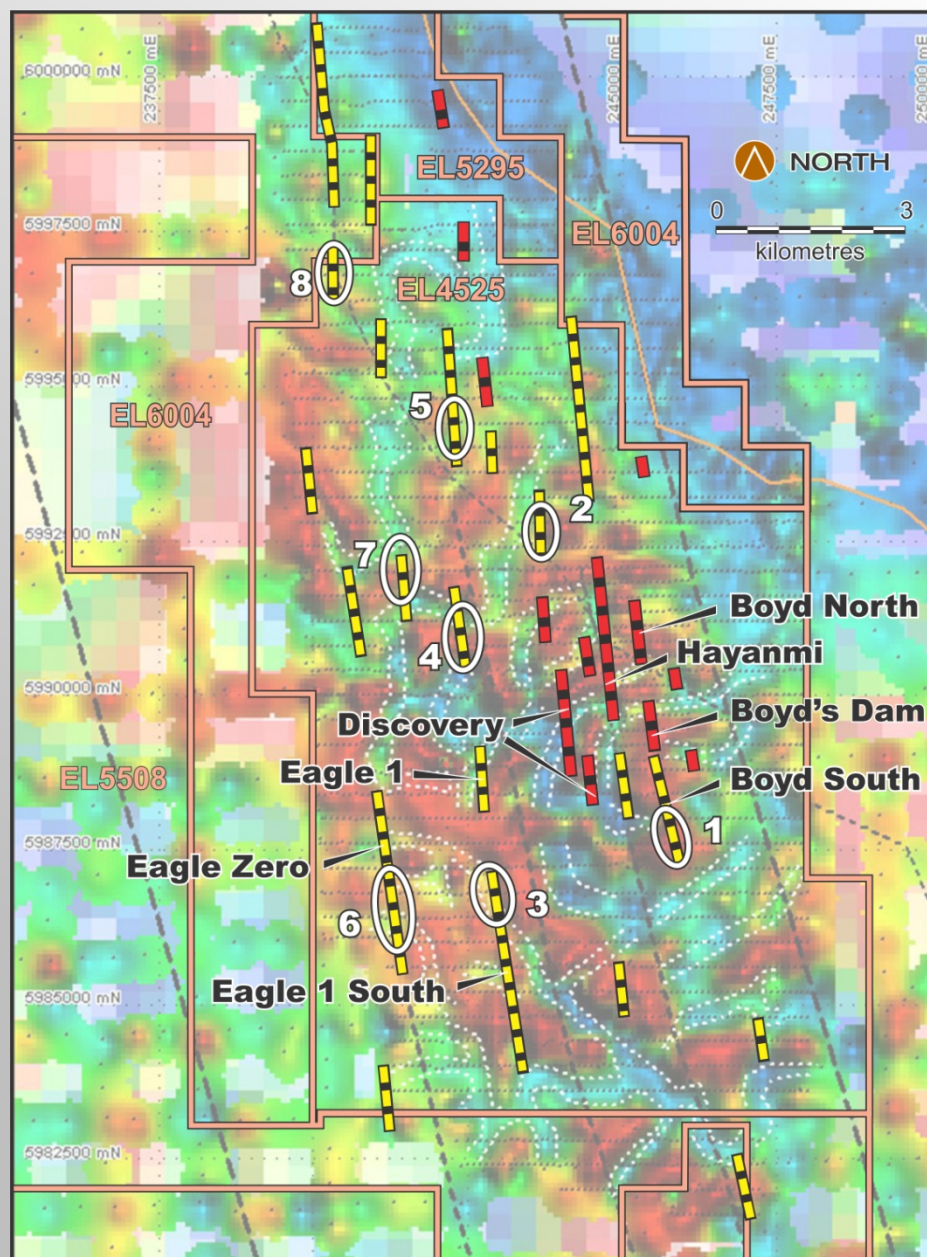


**catalyst**  
METALS LTD

# Lifting the Cover

## Gravity Survey

- ▲ First Vertical derivative shows known gold channels
- ▲ Other potential gold zones targeted (yellow lines)
- ▲ Eight (8) Targets defined for drilling
- ▲ Basement depth estimates of 40 to 80 metres

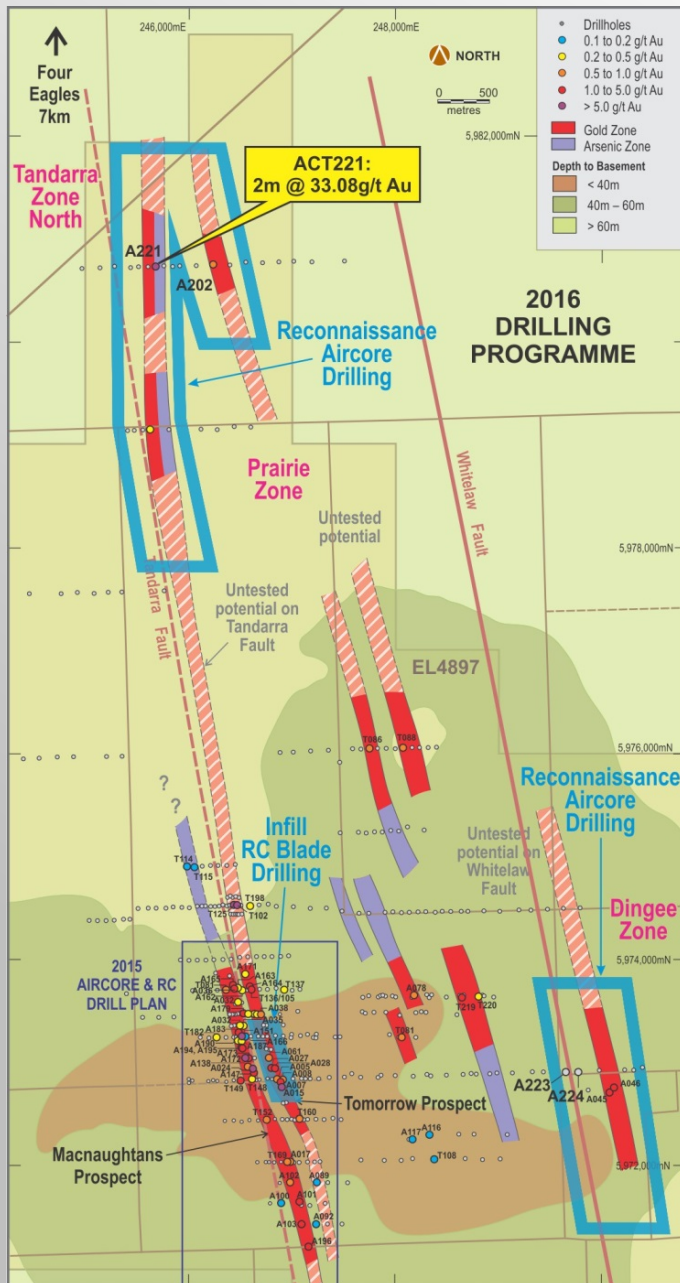


# 2<sup>nd</sup> Project Tandarra – Summary



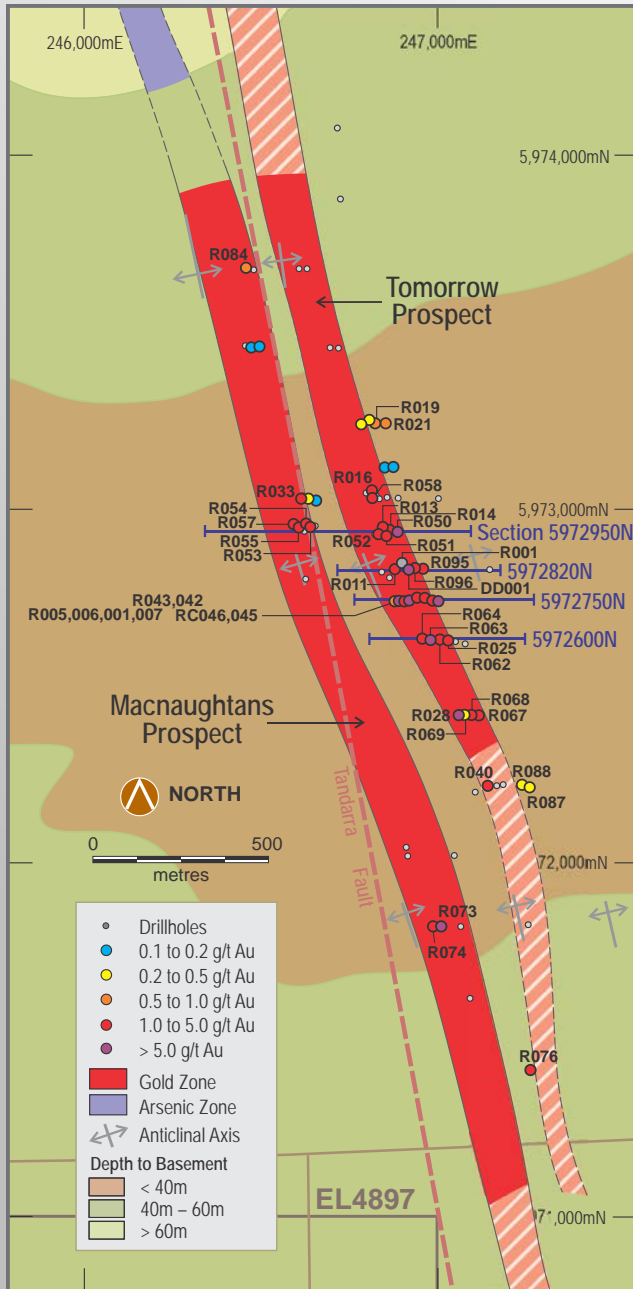
- ▲ Large areas of potential in basement (< 60m)
- ▲ High grade gold at less than 20m depth
- ▲ 10 to 20km strike length of untested structure
- ▲ Open pit potential at Tomorrow Prospect
- ▲ Angled RC and/or Diamond Drilling required

# 2016 Tandarra Drilling Plan



- ▲ Follow-up Aircore reconnaissance drilling:
  - Tandarra North
  - Dingee
- ▲ Infill RC Blade drilling:
  - Tomorrow zone
- ▲ Large areas of strike length still untested

# Tomorrow Zone Aircore RC/DD



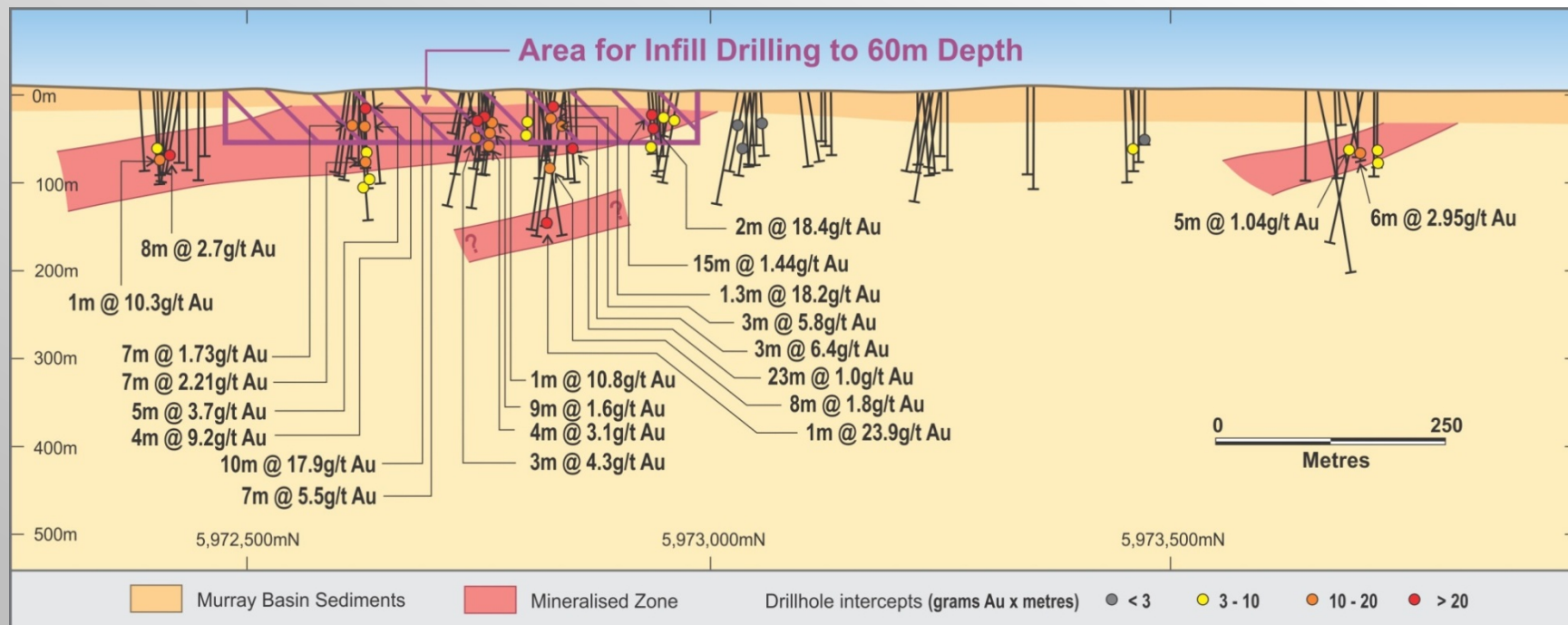
## Significant Aircore Intersections

TAC136	6.0m @ 2.95g/t Au from 75m	ACT151	1.5m @ 59.2g/t Au from 69m
TAC146	1.0m @ 9.96g/t Au from 42m		and 2.0m @ 5.12g/t Au from 70.5m
ACT015	10m @ 17.88g/t Au from 37m	ACT172	3.0m @ 8.83g/t Au from 46.5m
ACT024	1.0m @ 2.91g/t Au from 107m		and 1.5m @ 2.62g/t Au from 58.5m
	and 1.0m @ 15.2g/t Au from 118m		and 1.5m @ 6.93g/t Au from 79.5m

## Significant RC/DD Intersections

DDT001	1.3m @ 18.2g/t Au from 20m	RCT045	1.0m @ 10.8g/t Au from 43m
	and 1.7m @ 5.7g/t Au from 36m		and 4.0m @ 2.67g/t Au from 55m
	and 1.3m @ 5.9g/t Au from 39.4m	RCT050	2.0m @ 18.4g/t Au from 44m
RCT006	1.0m @ 6.05g/t Au from 45m	RCT062	5.0m @ 3.7g/t Au from 41m
	and 7.0m @ 5.5g/t Au from 50m		and 7.0m @ 2.21g/t Au from 81m
RCT007	1.0m @ 8.6g/t Au from 12m	RCT063	4.0m @ 9.2g/t Au from 18m
RCT028	8.0m @ 2.7g/t Au from 76m		and 4.0m @ 2.39g/t Au from 103m
	inc 2.0m @ 8.9g/t Au from 82m	RCT073	1.0m @ 7.29g/t Au from 41m
		RCT097	3.0m @ 6.4g/t Au from 54m

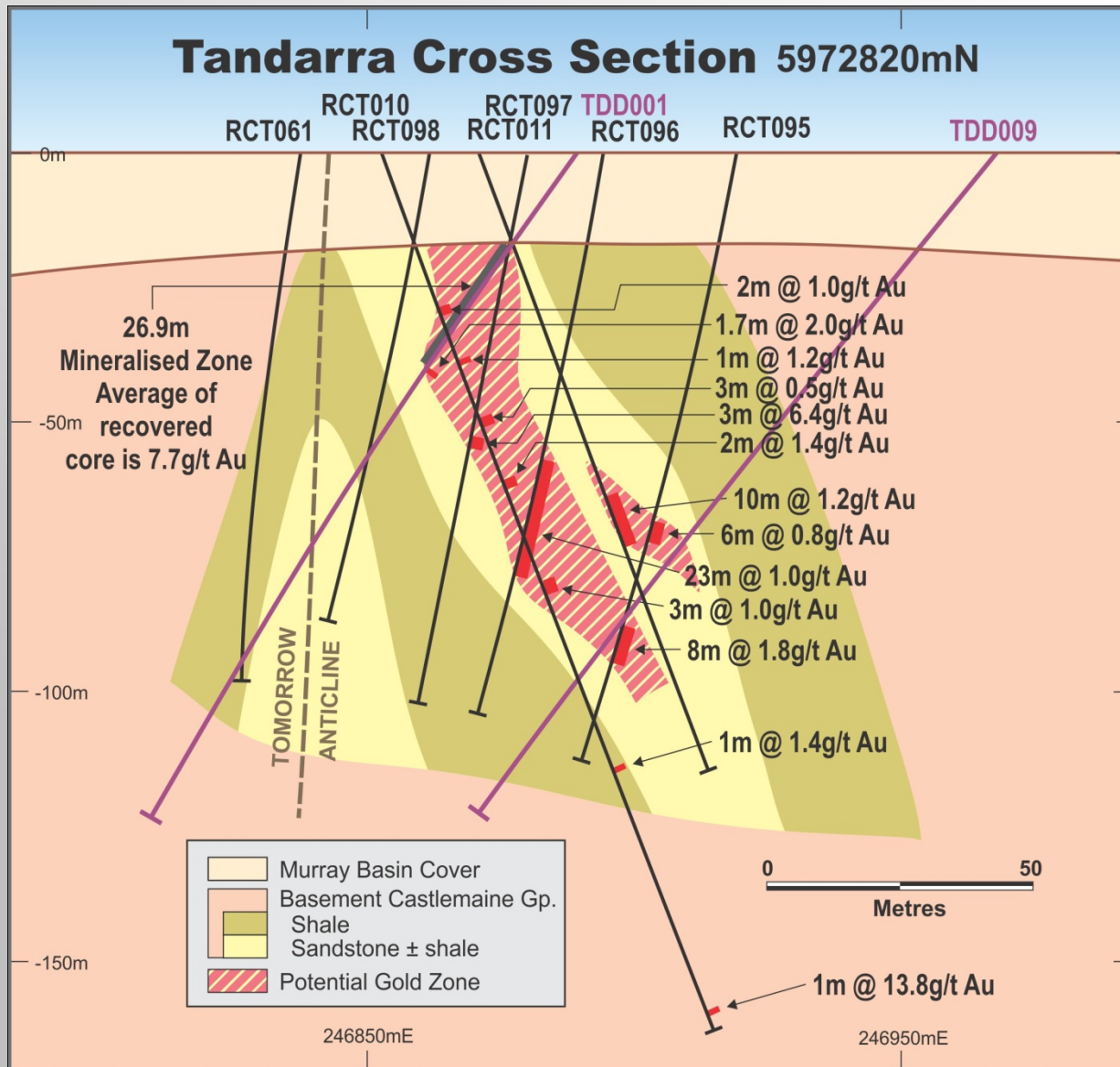
# Tandarra (Tomorrow) Long Projection



# Tandarra Cross Section 26.9m gold zone



**catalyst**  
METALS LTD



# Four Eagles Fine and Coarse Gold



- ▲ **Process from Discovery (FE328), Hayanmi (FE471) and Boyd's Dam (FE415)**





# News Flow June – July 2016



- ▲ **Tandarra Tomorrow RC Drilling**
  - 3,447 assays in progress (50% complete)
  - 240 bulk leaches in progress
- ▲ **Four Eagles Hayanmi RC drilling**
  - Approximately 2,200 samples to be assayed
  - 107 bulk leaches in progress
- ▲ **Reconnaissance Tandarra and Raydarra East (160 samples for assay)**
- ▲ **Interpretation of Tomorrow and Hayanmi gold zones**

# Disclaimer & Forward Looking Statements



- This presentation has been prepared by Catalyst Metals Limited (“Catalyst”). This document contains background information about Catalyst current at the date of this presentation. The presentation is in summary form and does not purport to be all inclusive or complete. Recipients should conduct their own investigations and perform their own analysis in order to satisfy themselves as to the accuracy and completeness of the information, statements and opinions contained in this presentation.
- This presentation is for information purposes only. Neither this presentation nor the information in it constitutes an offer, invitation, solicitation or recommendation in relation to the purchase or sale of shares in any jurisdiction.
- This presentation may not be distributed in any jurisdiction except in accordance with the legal requirements applicable in such jurisdictions. Recipients should inform themselves of the restrictions that apply in their own jurisdiction. A failure to do so may result in a violation of securities laws in such a jurisdiction.
- This presentation does not constitute investment advice and has been prepared without taking into account the recipient’s investment objectives, financial circumstances or particular needs and the opinions and recommendations in this presentation are not intended to represent recommendations of particular investments to particular persons. Recipients should seek professional advice when deciding if an investment is appropriate. All securities transactions involve risks, which include (among others) the risk of adverse or unanticipated market, financial or political developments.
- To the fullest extent permitted by law, Catalyst and its officers, employees, agents and advisers do not make any representation or warranty, express or implied, as to the currency, accuracy, reliability or completeness of any information, statements, opinions, estimates, forecasts or other representations contained in this presentation. No responsibility for any errors or omissions from this presentation arising out of negligence or otherwise is accepted.
- This presentation may include forward looking statements. Forward looking statements are only predictions and are subject to risks, uncertainties and assumptions which are outside the control of Catalyst. Actual values, results or events may be materially different to those expressed or implied in this presentation. Given these uncertainties, recipients are cautioned not to place reliance on forward looking statements. Any forward looking statements in this presentation speak only at the date of issue of this presentation. Subject to any continuing obligations under any applicable law and the ASX Listing Rules, Catalyst does not undertake any obligation to update or revise any information or any of the forward looking statements in this presentation of any changes in events, conditions or circumstances on which any such forward looking statement is based.

# Corporate Presentation

Sydney 14 June 2016

Bruce Kay

*Technical  
Director*



**catalyst**  
**METALS LTD**