

Dear Shareholder,

**Capital Raising – Acquisition of Zelda Therapeutics Pty Ltd**

On 25 July 2016, shareholders of Gleneagle Gold Limited (“Gleneagle” or “the Company”) approved the acquisition of Zelda Therapeutics Pty Ltd (“Zelda”) a biotechnology company focussed on medical cannabis therapies.

An Investor Factsheet on Zelda is enclosed.

As part of the acquisition of Zelda, the Company is seeking to raise up to \$4,000,000 by the issue of 160,000,000 shares at an issue price of \$0.025 per share.

A Prospectus has been lodged with the Australian Securities & Investment Commission for the purpose of the capital raising.

We invite your participation in the capital raising. The Board believes that the acquisition of Zelda provides existing and new shareholders with the ability to gain exposure to one of the world’s fastest growing industries providing potential for future value creation.

A copy of the Prospectus can be downloaded from the website of the Company at [www.gleneaglegold.net.au](http://www.gleneaglegold.net.au). You should read the Prospectus carefully before deciding whether or not to invest.

CPS Capital Group Pty Ltd is acting as Lead Manager of the capital raising.

For all queries regarding the offer or to apply for shares, please contact Jason Peterson or Kelly Smith at CPS Capital Group:

**Jason Peterson**

E: [Jason.Peterson@cpscapital.com.au](mailto:Jason.Peterson@cpscapital.com.au)

P: 08 9223 2222

**Kelly Smith**

E: [Kelly.Smith@cpscapital.com.au](mailto:Kelly.Smith@cpscapital.com.au)

P: 08 9223 2222

Yours sincerely,



Wayne Loxton  
Chairman

## Company Overview

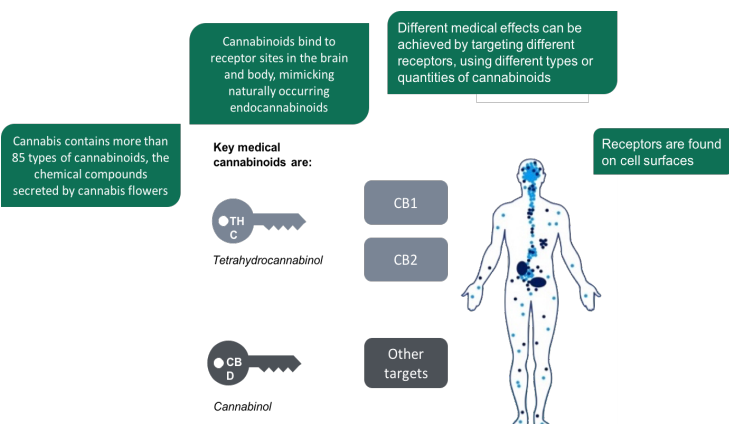
*Zelda Therapeutics is a biotechnology company with exclusive, global access to an extensive USA set of human data related to medicinal cannabis-based formulations*

- Zelda will use this information to design a series of Phase 2 human clinical trials
- Zelda aims to focus initial Phase 2 clinical trials around sleep disorders and dermatology indications. These include insomnia and acne respectively
- The Company has identified these markets as having substantial commercial potential

## Compelling Investment Proposition

- Advancing direct to phase 2 trials due to exclusive agreement with Aunt Zelda's
- Shifting attitudes to medical cannabis opening up a diverse worldwide opportunity
- Lead products in dermatology, sleep disorders and cancer
- Focus on relatively low cost, short duration trials in high value niche indications for max value
- Clear strategy to reach market via licensing and partnering
- Highly experienced and industry recognised Board & management team
- High activity news flow pipeline

## How does medical cannabis work?



## Listing Capital Raise

Zelda Therapeutics Pty Ltd has agreed to be 100% acquired by Gleneagle Gold Limited.

- The new listed company Zelda Therapeutics Ltd is seeking to raise up to \$4m dollars to fund initial Phase 2 clinical trials

| Zelda Therapeutic                       |                              |
|---|------------------------------|
| Securities on offer:                    | 160,000,000                  |
| Issue price:                            | \$0.025 (post consolidation) |
| Target Fundraise:                       | \$3,000,000 - \$4,000,000    |
| Post-Consolidation securities on issue: | 669,127,672                  |

## Industry Leading Board and Management Team

**Harry Karelis** - Founder & Executive Chairman

Harry is the founder of Titan Capital Partners and has in excess of 24 years diversified experience in the financial services sector including specialist med-tech private equity investing.



**Mara Gordon** - Founder & Director

Mara is the co-founder of Aunt Zelda's and Zelda Therapeutics. She specialises in the development of cannabis extract treatment protocols for seriously ill patients in California.



**Jason Peterson** - Founder & Director

Jason is a Director, major shareholder and Head of Corporate at boutique stock broking and corporate advisory firm, CPS Capital. He has more than 19 years of experience in the financial advisory sector.



**Dr Stewart Washer** - Founder & Director

Stewart has 20 years of CEO and Board experience in medical technology, biotech and agrifood companies. He is currently Chairman of ASX-listed Orthocell Ltd, Cynata Therapeutics Ltd and Chairman of privately-held Minomic International Ltd.

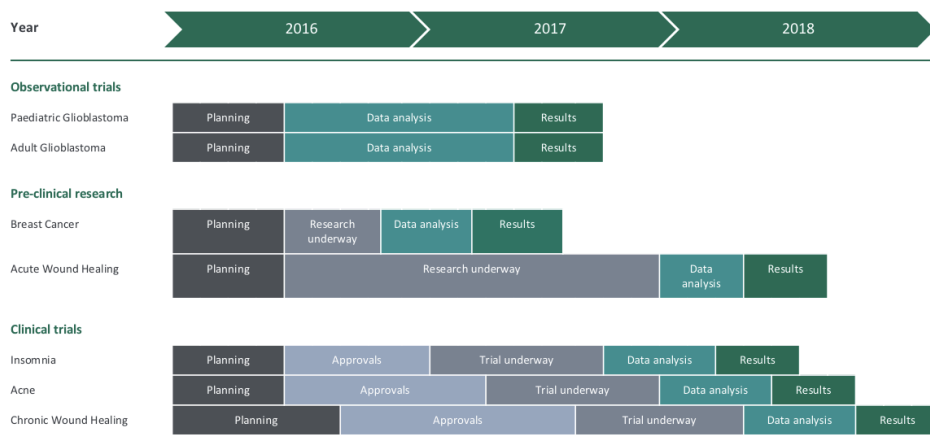


**Scott Walters** - Advisor to the Board

Scott has more than 20 years experience in the capital markets and has most recently focused on the Canadian medical cannabis industry as an advisor and entrepreneur. He is a founding shareholder of several specialist medical cannabis referral clinics in Canada and the USA.



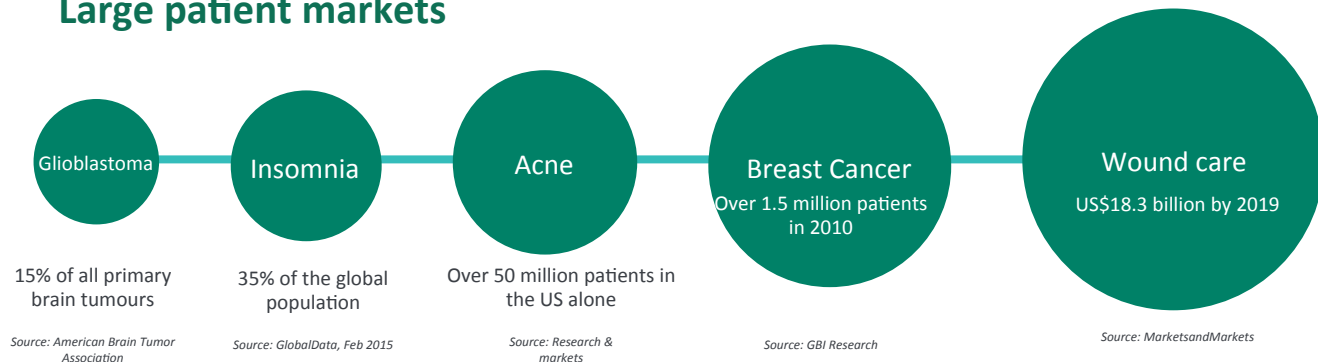
## Strong therapeutic pipeline



Strong partnerships with leading industry organisations



## Large patient markets



## Structural drivers of the Medical Cannabis Industry

