

Press Release

16th June 2016



West African hits visible gold at 175m confirms depth potential at M1 South

Gold developer West African Resources Limited (ASX, TSXV: WAF) is pleased to report further high-grade RC results from the M1 prospect, at its 100%-owned Tanlouka Gold Project, Burkina Faso.

Highlights

- **Visible gold intercepted in TAN16-DD043 and TAN16-DD045 at M1 South**
- **Strong results in shallow RC drilling including 22m at 2.98g/t Au from 47m at M1 South**
- **Feasibility study commenced – funded by \$12.5m oversubscribed institutional capital raising**

Managing Director Richard Hyde commented:

“Extensive visible gold has been intercepted in diamond core drilling at 175m in TAN16-DD045, which is the deepest hole to date at M1 South.

“Strong results have also been returned in shallow resource drilling with TAN16-RC160 returning 22m at 2.98g/t Au from 47m.

“Drilling is currently focussing on open-pitabile mineralisation at M1 South and North ahead of a maiden resource at M1 in Q3 2016.”

Confirmation of high grade gold at M1 South

Diamond drilling at M1 South has successfully intercepted visible gold mineralisation in holes TAN16-DD043 and TAN16-DD045 (results pending). Intercepts are on consecutive sections SE375 and SE400, and indicate high-grade shoots have a steep northwest plunge. Mineralisation exhibits strong shearing and silica-sericite-albite alteration. Much of the gold at M1 south is in free form, but also associated with pyrite and pyrrhotite sulphides.

The intercept in TAN16-DD043 is 20m down dip of TAN16-DD033 which returned 4m at 86.96g/t Au, while the intercept in TAN16-DD045 is 40m down dip of TAN16-RC124 which returned 7m at 13.57g/t Au. Results for TAN16-DD043 and TAN16-DD045, which finished at 151m and 224m respectively, are expected in the next two weeks as holes are currently being logged in detail by WAF geologists, ahead of sampling and assaying. Examples of this mineralisation is shown in Photos 1, 2 and 3.



Photo 1: TAN16-DD045 visible gold at 175m depth.

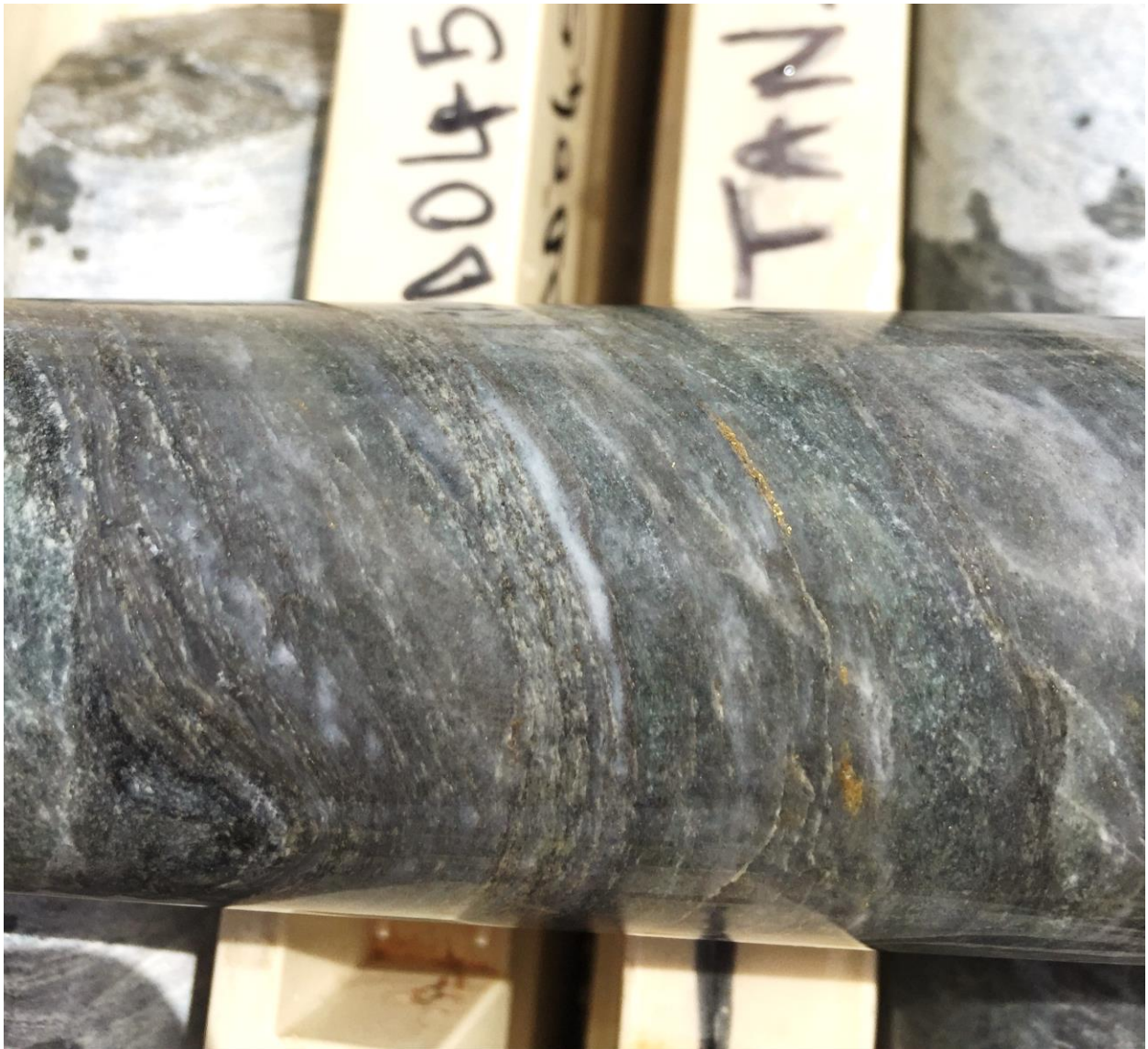


Photo 2: TAN16-DD045 visible gold at 175m depth.



Photo 3: TAN16-DD043 visible gold at 113m depth.

Shallow infill RC drilling at the M1 South prospect has also been in progress and continues to show good continuity with strong results from TAN16-RC160 returning 22m at 2.98g/t Au from 47m, including 1m at 27.41g/t Au. Shallow holes continue to hit open stopes and backfill material from historic artisanal mining. Latest results presented below include:

- TAN16-RC160: 22m at 2.98g/t Au from 47m, including 1m at 27.41g/t Au
- TAN16-RC162: 3m at 1.4g/t Au from 13m
 - and 2m at 1.13g/t Au from 21m (backfill and open stope 20-22m)
 - and 3m at 4.0g/t Au from 49m
 - and 3m at 0.8g/t Au from 65m
- TAN16-RC163: 3m at 0.56g/t Au from 48m (open stope 48-49m)

- TAN16-RC164: 4m at 1.2g/t Au from 13m
 - and 13m at 3.02g/t Au from 21m, including 1m at 33.15g/t Au
 - and 4m at 1.34g/t Au from 42m (open stope 40-43m)
 - and 5m at 4.66g/t Au from 67m
- TAN16-RC168: 2m at 5.69g/t Au from 109m
 - and 3m at 1.34g/t Au from 114m
- TAN16-RC169: 1m at 27.18g/t Au from 148m

All drilling results reported are composited using a trigger of 0.2g/t Au and do not include more than two metres of internal waste (0.2g/t Au). Higher grade intervals reported are composited using a 5g/t Au trigger again with no more than two metres of internal waste (5g/t Au). Further details for interested readers are presented in the footnotes following Table 1 and Section 1 at the back of this announcement.

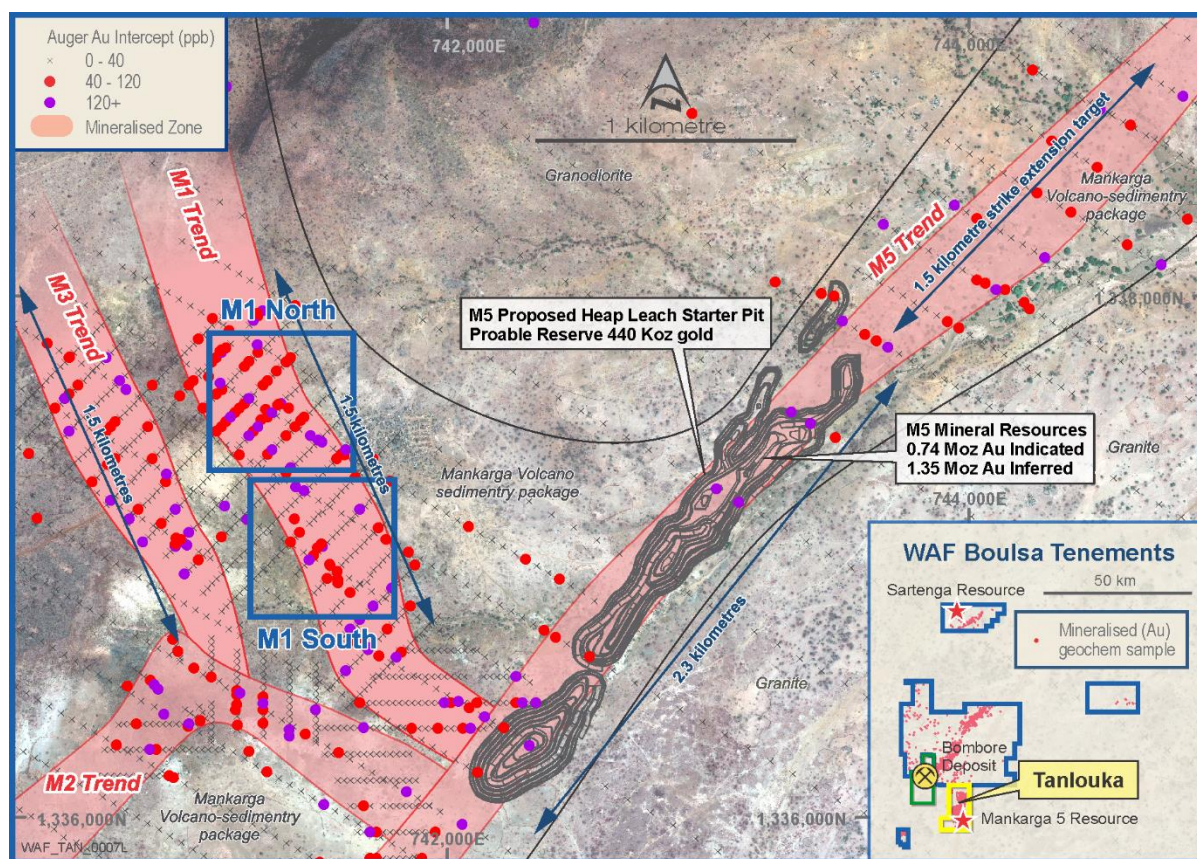


Figure 1: Tanlouka Gold Project – Mineralised Trends and Prospect Locations

Recent diamond and RC drilling at M1 South has delivered extremely high grade gold mineralisation over 350m at the southern end of the M1 trend. Recent high grade results from M1 North have reinforced the potential of the broader project. On April 15th 2016, the Company announced a heavily oversubscribed \$12.5m capital raising to fund drilling programs and a CIL feasibility study for the Tanlouka Gold Project which will investigate the combination of high grade gold mineralisation from M1 with the predominantly oxide mineralisation from M5. This study will leverage off the work completed during 2014-15 for the heap leach project. A long-section through the M1 South mineralised zone and summary plan are presented below as Figures 2 and 3. Full results are presented in Table 1.

Figure 2: M1 South Long-section

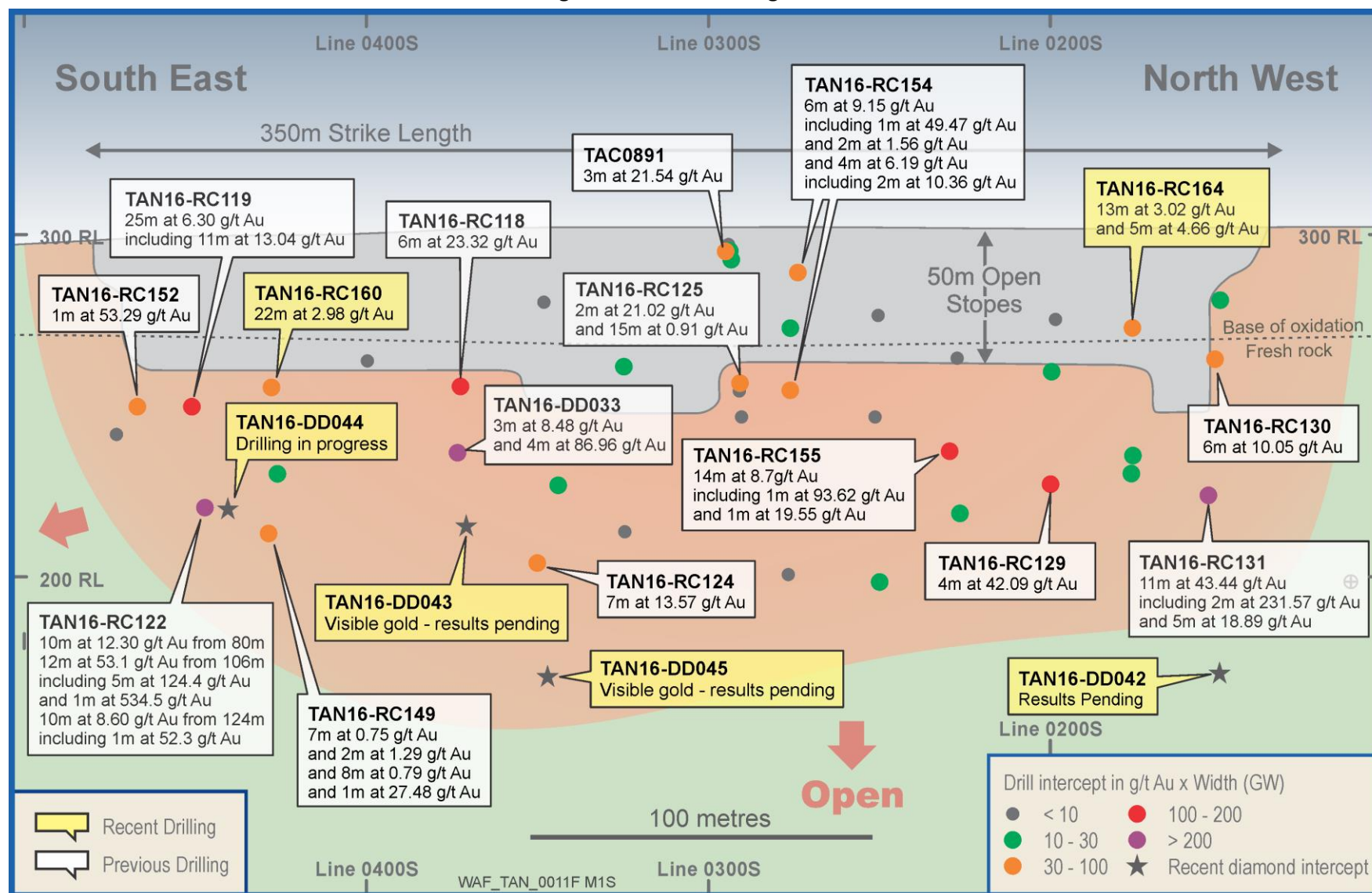


Figure 3: M1 Cross-section 425 Southwest

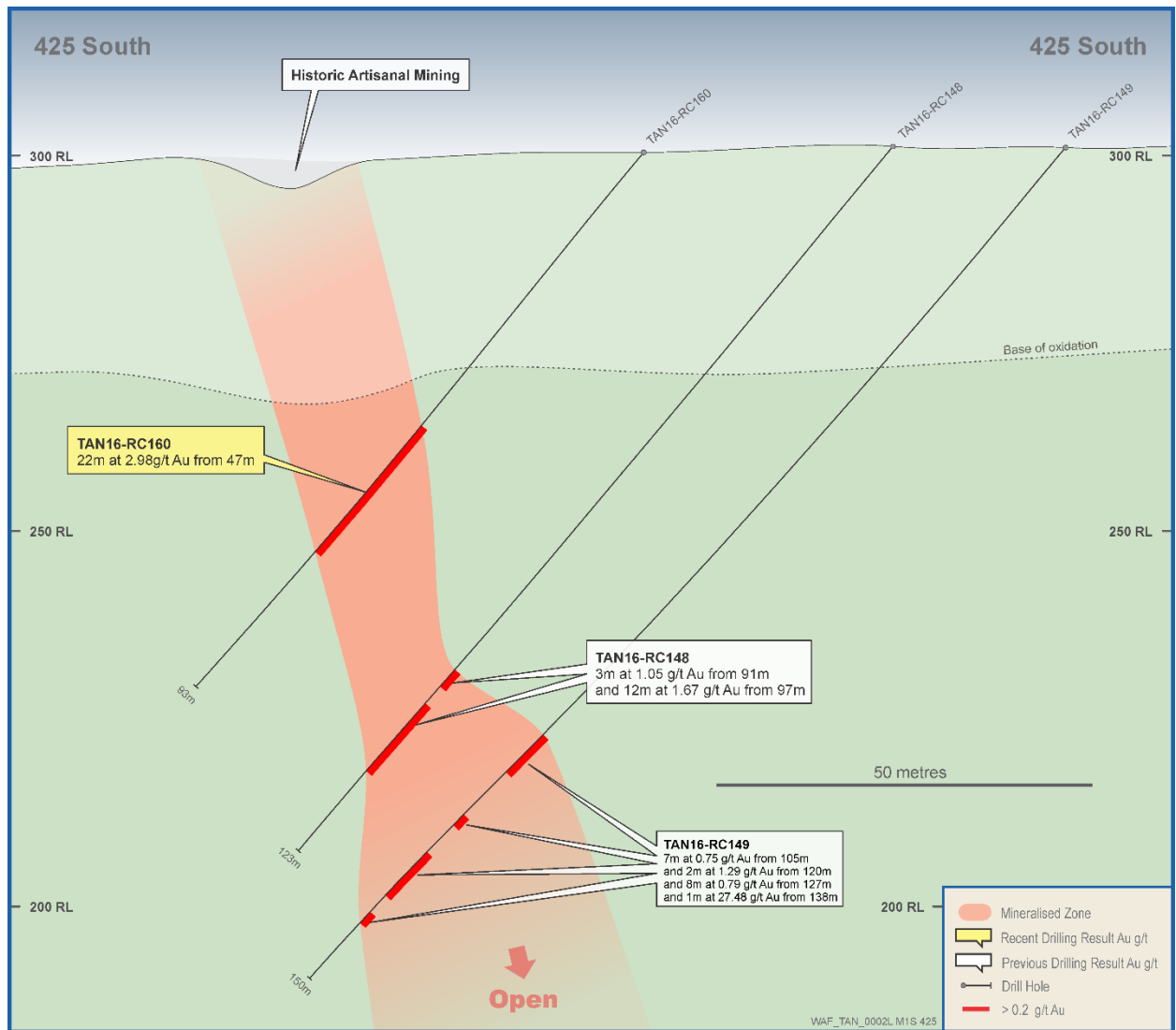


Figure 4: M1 Summary Plan (Inset)

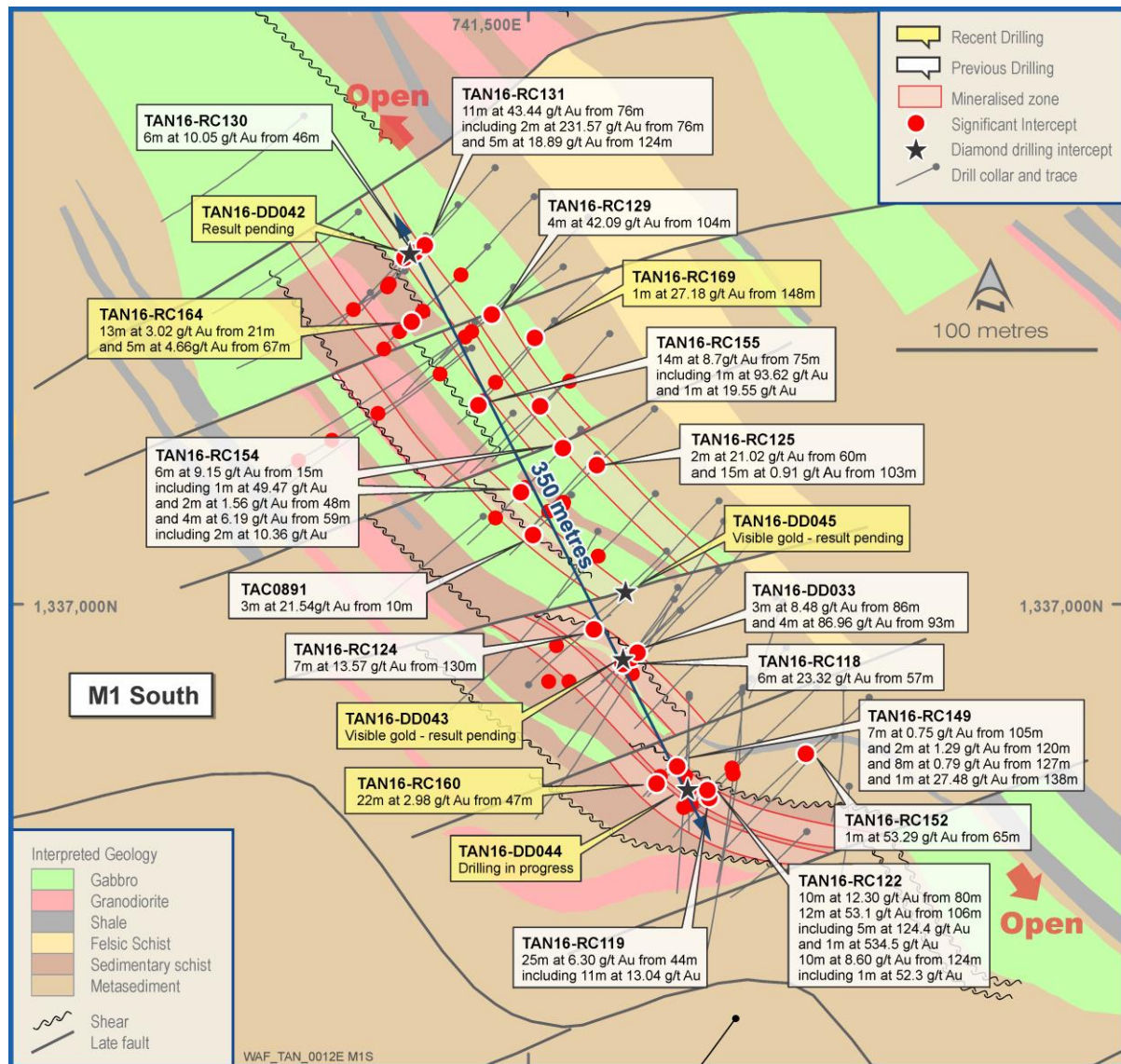


Table 1
M1 Significant Intercepts 0.2 g/t Cut Off

Hole ID	From	To	Interval	Au g/t	Dip	Azi	EOH	Easting	Northing	RL	Section
TAN16-DD033	86	89	3	8.48	-50	225	100	741594	1337016	302	SE0380
TAN16-DD033	93	97	4	86.96							
TAN16-RC113	21	25	4	5.56	-50	225	82	741449	1337183	303	SE0150
TAN16-RC114	28	38	10	0.51	-50	225	80	741473	1337140	303	SE0200
TAN16-RC116	4	15	11	1.16	-50	225	66	741521	1337054	303	SE0300
TAN16-RC117	96	100	4	2.11	-50	225	123	741568	1337026	302	SE0350
TAN16-RC117	104	108	4	6.54							
TAN16-RC118	57	63	6	23.32	-50	225	81	741575	1336997	301	SE0380
TAN16-RC119	24	31	7	1.12	-50	225	96	741614	1336931	300	SE0450
TAN16-RC119	44	69	25	6.32							
TAN16-RC121	25	28	3	2.05	-50	45	81	741500	1336960	300	SE0350
TAN16-RC121	32	37	5	1.06							
TAN16-RC122	80	83	3	2.75	-50	225	135	741643	1336958	301	SE0450
TAN16-RC122	86	91	5	31.23							
TAN16-RC122	106	118	12	53.11							
TAN16-RC122	123	134	11	7.87							
TAN16-RC124	130	137	7	13.57	-50	225	141	741594	1337051	302	SE0350
TAN16-RC125	60	62	2	21.02	-50	225	129	741562	1337097	303	SE0300
TAN16-RC125	103	118	15	0.91							
TAN16-RC126	26	38	12	0.78	-50	225	102	741519	1337111	303	SE0250
TAN16-RC127	72	74	2	1.64	-50	225	135	741540	1337134	303	SE0250
TAN16-RC127	132	134	2	0.52							
TAN16-RC128	50	58	8	3.39	-50	225	85	741492	1337157	303	SE0200
TAN16-RC128	61	63	2	1.03							
TAN16-RC129	88	90	2	1.03	-50	225	159	741529	1337192	302	SE0200
TAN16-RC129	104	108	4	42.09							
TAN16-RC130	46	52	6	10.05	-50	225	111	741465	1337198	303	SE0150
TAN16-RC130	93	95	2	3.80							
TAN16-RC131	76	87	11	43.44	-50	225	141	741483	1337217	303	SE0150
TAN16-RC131	124	129	5	18.89							
TAN16-RC132	60	65	5	6.20	-50	225	90	741421	1337596	304	NW0150
TAN16-RC132	69	71	2	0.63							
TAN16-RC133	50	52	2	0.58	-50	225	129	741355	1337663	304	NW0250
TAN16-RC133	61	69	8	0.50							
TAN16-RC133	100	102	2	1.97							
TAN16-RC134	93	110	17	4.28	-50	225	125	741415	1337653	303	NW0200
TAN16-RC135	40	42	2	3.34	-50	225	117	741499	1337595	304	NW0100
TAN16-RC135	114	117	3	0.49							
TAN16-RC136	68	88	20	5.78	-50	225	108	741384	1337654	304	NW0225
TAN16-RC137	64	68	4	0.78	-50	225	135	741406	1337678	303	NW0225
TAN16-RC137	96	98	2	0.43							
TAN16-RC137	104	116	12	5.02							
TAN16-RC138	76	91	15	1.25	-50	225	105	741417	1337623	304	NW0175
TAN16-RC139	101	108	7	1.91	-50	225	135	741438	1337644	303	NW0175
TAN16-RC140	69	73	4	1.33	-50	225	125	741347	1337690	304	NW0275
TAN16-RC140	76	80	4	1.61							
TAN16-RC140	99	106	7	1.63							
TAN16-RC141	82	92	10	0.72	-50	225	141	741358	1337702	304	NW0275
TAN16-RC141	97	101	4	0.74							
TAN16-RC141	112	121	9	9.66							
TAN16-RC142	73	84	11	1.48	-50	225	111	741453	1337590	304	NW0125

Table 1
M1 Significant Intercepts 0.2 g/t Cut Off

Hole ID	From	To	Interval	Au g/t	Dip	Azi	EOH	Easting	Northing	RL	Section
TAN16-RC143	102	107	5	0.52	-50	225	135	741478	1337614	303	NW0125
TAN16-RC143	111	117	6	3.35							
TAN16-RC144	75	77	2	0.57	-50	225	100	741489	1337552	304	NW075
TAN16-RC145	105	107	2	0.70	-50	225	114	741515	1337578	304	NW075
TAN16-RC148	91	94	3	1.05	-50	225	123	741611	1336963	301	SW0425
TAN16-RC148	97	109	12	1.67							
TAN16-RC149	105	112	7	0.75	-50	225	150	741628	1336978	301	SW0425
TAN16-RC149	120	122	2	1.29							
TAN16-RC149	127	135	8	0.79							
TAN16-RC149	138	140	2	14.13							
TAN16-RC152	65	66	1	53.29	-50	225	123	741669	1336953	301	SE0475
TAN16-RC153	62	67	5	2.48	-50	225	107	741563	1337055	303	SE0325
TAN16-RC154	15	21	6	9.15	-50	225	120	741526	1337087	303	SE0275
TAN16-RC154	48	50	2	1.56							
TAN16-RC154	59	63	4	6.19							
TAN16-RC155	0	4	4	0.20	-50	225	108	741513	1337141	303	SE0225
TAN16-RC155	75	89	14	8.70							
TAN16-RC156	111	113	2	1.03	-50	225	140	741539	1337166	303	SE0225
TAN16-RC156	118	120	2	12.54							
TAN16-RC157	42	51	9	0.86	-50	225	111	741479	1337177	303	SE0175
TAN16-RC157	58	60	2	0.23							
TAN16-RC157	91	94	3	4.83							
TAN16-RC157	98	102	4	1.94							
TAN16-RC158	82	84	2	11.88	-50	225	141	741503	1337202	303	SE0175
TAN16-RC158	92	94	2	0.45							
TAN16-RC158	133	136	3	1.63							
TAN16-RC160	47	69	22	2.98	-50	225	93	741588	1336939	300	SE0425
TAN16-RC162	13	16	3	1.40	-50	225	102	741506	1337065	303	SE0275
TAN16-RC162	21	23	2	1.13							
TAN16-RC162	49	52	3	4.00							
TAN16-RC162	65	68	3	0.80							
TAN16-RC163	48	51	3	0.56	-50	225	120	741490	1337118	303	SE0225
TAN16-RC164	13	17	4	1.20	-50	225	99	741459	1337159	303	SE0175
TAN16-RC164	21	34	13	3.02							
TAN16-RC164	42	46	4	1.34							
TAN16-RC164	67	72	5	4.66							
TAN16-RC165	84	88	4	0.44	-50	225	111	741443	1337222	303	SE0125
TAN16-RC166	97	99	2	0.25	-50	225	162	741595	1337088	303	SE0375
TAN16-RC166	102	109	7	0.51							
TAN16-RC166	124	128	4	0.23							
TAN16-RC166	153	156	3	0.37							
TAN16-RC167	132	135	3	0.45	-50	225	174	741566	1337128	303	SE0275
TAN16-RC167	145	147	2	0.96							
TAN16-RC168	109	111	2	5.69	-50	225	195	741570	1337163	303	SE0250
TAN16-RC168	114	117	3	1.34							
TAN16-RC168	151	154	3	0.80							
TAN16-RC168	168	177	9	0.38							
TAN16-RC169	148	149	1	27.18	-50	225	204	741563	1337194	302	SE0225
TAN16-RC169	175	185	10	0.39							

- * denotes ending in mineralisation
- All holes are RC and diamond holes.
- All reported intersections from the current 2016 program are assayed at 1m intervals.
- Sample preparation and Fire Assay conducted by BIGS Ouagadougou. Assayed by 50g fire assay with AAS finish.
- Mineralised intervals reported with a maximum of 2 metre of internal dilution of less than 0.20g/t gold. No top cut applied.
- Sample preparation and Fire Assay conducted by BIGS Ouagadougou. Assayed by 50g fire assay with AAS finish.
- QA/QC protocol: For RC samples we insert one blank, one standard and one duplicate for every 17 samples (3 QA/QC within every 20 samples).

Competent Person's Statement

Information in this announcement that relates to exploration results, exploration targets or mineral resources is based on information compiled by Mr Richard Hyde, a Director, who is a Member of The Australian Institute of Mining and Metallurgy and Australian Institute of Geoscientists. Mr Hyde has sufficient experience which is relevant to the style of mineralisation and type of deposit under consideration and to the activity which he is undertaking to qualify as a Competent Person as defined in the 2012 Edition of the Australasian Code for Reporting of Exploration Results, Mineral Resources and Ore Reserves (the JORC Code) and a Qualified Person under National Instrument 43-101. Mr Hyde consents to the inclusion in this announcement of the statements based on his information in the form and context in which they appear.

Forward Looking Information

This news release contains "forward-looking information" within the meaning of applicable Canadian and Australian securities legislation, including information relating to West African's future financial or operating performance may be deemed "forward looking". All statements in this news release, other than statements of historical fact, that address events or developments that West African expects to occur, are "forward-looking statements". Forward-looking statements are statements that are not historical facts and are generally, but not always, identified by the words "expects", "does not expect", "plans", "anticipates", "does not anticipate", "believes", "intends", "estimates", "projects", "potential", "scheduled", "forecast", "budget" and similar expressions, or that events or conditions "will", "would", "may", "could", "should" or "might" occur. All such forward-looking statements are based on the opinions and estimates of the relevant management as of the date such statements are made and are subject to important risk factors and uncertainties, many of which are beyond West African's ability to control or predict. Forward-looking statements are necessarily based on estimates and assumptions that are inherently subject to known and unknown risks, uncertainties and other factors that may cause actual results, level of activity, performance or achievements to be materially different from those expressed or implied by such forward-looking statements. In the case of West African, these facts include their anticipated operations in future periods, planned exploration and development of its properties, and plans related to its business and other matters that may occur in the future. This information relates to analyses and other information that is based on expectations of future performance and planned work programs. Statements concerning mineral resource estimates may also be deemed to constitute forward-looking information to the extent that they involve estimates of the mineralization that will be encountered if a mineral property is developed.

Forward-looking information is subject to a variety of known and unknown risks, uncertainties and other factors which could cause actual events or results to differ from those expressed or implied by the forward-looking information, including, without

limitation: exploration hazards and risks; risks related to exploration and development of natural resource properties; uncertainty in West African's ability to obtain funding; gold price fluctuations; recent market events and conditions; risks related to the uncertainty of mineral resource calculations and the inclusion of inferred mineral resources in economic estimation; risks related to governmental regulations; risks related to obtaining necessary licenses and permits; risks related to their business being subject to environmental laws and regulations; risks related to their mineral properties being subject to prior unregistered agreements, transfers, or claims and other defects in title; risks relating to competition from larger companies with greater financial and technical resources; risks relating to the inability to meet financial obligations under agreements to which they are a party; ability to recruit and retain qualified personnel; and risks related to their directors and officers becoming associated with other natural resource companies which may give rise to conflicts of interests. This list is not exhaustive of the factors that may affect West African's forward-looking information. Should one or more of these risks and uncertainties materialize, or should underlying assumptions prove incorrect, actual results may vary materially from those described in the forward-looking information.

West African's forward-looking information is based on the reasonable beliefs, expectations and opinions of their respective management on the date the statements are made and West African does not assume any obligation to update forward looking information if circumstances or management's beliefs, expectations or opinions change, except as required by law. For the reasons set forth above, investors should not place undue reliance on forward-looking information. For a complete discussion with respect to West African, please refer to West African's financial statements and related MD&A, all of which are filed on SEDAR at www.sedar.com.

Neither TSX Venture Exchange nor its Regulation Services Provider (as that term is defined in the policies of the TSX Venture Exchange) accepts responsibility for the adequacy or accuracy of this release.

Section 1: Sampling Techniques and Data		
Criteria	JORC Code Explanation	Commentary
Sampling Technique	<p>Nature and quality of sampling (e.g. cut channels, random chips, or specific specialised industry standard measurement tools appropriate to the minerals under investigation, such as downhole gamma sondes, or handheld XRF instruments, etc.). These examples should not be taken as limiting the broad meaning of sampling</p> <p>Include reference to measures taken to ensure sample representivity and the appropriate calibration of any measurement tools or systems used. Aspects of the determination of mineralisation that are Material to the Public Report.</p> <p>In cases where 'industry standard' work has been done this would be relatively simple (e.g. 'reverse circulation drilling was used to obtain 1 m samples from which 3 kg was pulverised to produce a 30 g charge for fire assay'). In other cases more explanation may be required, such as where there is coarse gold that has inherent sampling problems. Unusual commodities or mineralisation types (e.g. submarine nodules) may warrant disclosure of detailed information.</p>	<p>The Mankarga area is being drilled using Diamond Core Drilling (DD) and Reverse Circulation (RC) drilling. The drill spacing is being in-filled to a nominal 25m x 20m grid spacing. A total program of 8000m is proposed. Holes are angled towards 045° or 225° magnetic at M1 and M3 and 120° where possible at M5 at declinations of -50°, to optimally intersect mineralised zones. All RC samples were weighed to determine recoveries. All potentially mineralised zones were then split and sampled at 1m intervals using three-tier riffle splitters. QA/QC procedures were completed as per industry best practice standards (certified blanks and standards and duplicate sampling).</p> <p>Samples were despatched to BIGS in Ouagadougou for sample preparation, where they were crushed, dried and pulverised to produce a sub sample for analysis. BIGS has a fire assay facility in Ouagadougou where 50g fire assays, AAS finishes and screen fire assays have been conducted. Historic sampling preparation and assaying was completed at Abilabs and SGS laboratories located in Ouagadougou. Historic samples we analysed by Fire Assay method with AAS finish.</p>
Drilling	<p>Drill type (e.g. core, reverse circulation, open- hole hammer, rotary air blast, auger, Bangka, sonic, etc.) and details (e.g. core diameter, triple or standard tube, depth of diamond tails, face- sampling bit or other type, whether core is oriented and if so, by what method, etc.).</p>	<p>Reverse Circulation "RC" drilling within the resource area comprises 4.5 inch diameter face sampling hammer and aircore blade drilling and hole depths range from 13m to 60m. Diamond drilling in progress comprises both NQ and HQ diameter core, at holes between 75m and 350m depth.</p>
Drill Sample Recovery	<p>Method of recording and assessing core and chip sample recoveries and results assessed.</p> <p>Measures taken to maximise sample recovery and ensure representative nature of the samples.</p> <p>Whether a relationship exists between sample recovery and grade and whether sample bias may have occurred due to preferential loss/gain of fine/coarse material.</p>	<p>RC recoveries are logged and recorded in the database. Overall recoveries are >75% for the RC; there are no significant sample recovery problems. A technician is always present at the rig to monitor and record recovery.</p> <p>RC samples were visually checked for recovery, moisture and contamination.</p> <p>The bulk of the Resource is defined by DD and RC drilling, which have high sample recoveries. The style of mineralisation, with common higher-grades, require large diameter core and good recoveries to evaluate the deposit adequately. The consistency of the mineralised intervals and density of drilling is considered to prevent any sample bias issues due to material loss or gain.</p>
Logging	<p>Whether core and chip samples have been geologically and geotechnical logged to a level of detail to support appropriate Mineral Resource estimation, mining studies and metallurgical studies.</p> <p>Whether logging is qualitative or quantitative in nature. Core (or costean/Trench, channel, etc.) photography.</p> <p>The total length and percentage of the relevant intersections logged.</p>	<p>Geotechnical logging was carried out on all diamond drill holes for recovery, RQD and number of defects (per interval). Information on structure type, dip, dip direction, alpha angle, beta angle, texture, shape, roughness and fill material is stored in the structure/Geotech table of the database.</p> <p>Logging of diamond core and RC samples recorded lithology, mineralogy, mineralisation, structural (DDH only), weathering, alteration, colour and other features of the samples. Core was photographed in both dry and wet form. All drilling has been logged to standard that is appropriate for the category of Resource which is being reported.</p>

Sub-Sampling Technique and Sample Preparation	<p>If core, whether cut or sawn and whether quarter, half or all core taken. If non-core, whether riffled, tube sampled, rotary split, etc. and whether sampled wet or dry.</p> <p>For all sample types, the nature, quality and appropriateness of the sample preparation technique. Quality control procedures adopted for all sub-sampling stages to maximise representivity of samples. Measures taken to ensure that the sampling is representative of the in situ material collected, including for instance results for field duplicate/second-half sampling.</p> <p>Whether sample sizes are appropriate to the grain size of the material being sampled.</p>	<p>RC samples were collected on the rig using a three tier riffle splitter. All samples were dry.</p> <p>The sample preparation for all samples follows industry best practice. BIGS in Ouagadougou for sample preparation, where they were crushed, dried and pulverised to produce a sub sample for analysis. Sample preparation involving oven drying, coarse crushing, followed by total pulverisation LM2 grinding mills to a grind size of 90% passing 75 microns. Field QC procedures involve the use of certified reference material as assay standards, blanks, and duplicates for the RC samples only. The insertion rate of these averaged 3:20 for RC.</p> <p>Field duplicates were taken on for both 1m RC splits using a riffle splitter. The sample sizes are considered to be appropriate to correctly represent the style of mineralisation, the thickness and consistency of the intersections.</p>
Quality of Assay Data and Laboratory Tests	<p>The nature, quality and appropriateness of the assaying and laboratory procedures used and whether the technique is considered partial or total.</p> <p>For geophysical tools, spectrometers, handheld XRF instruments, etc., the parameters used in determining the analysis including instrument make and model, reading times, calibrations factors applied and their derivation, etc.</p> <p>Nature of quality control procedures adopted (e.g. standards, blanks, duplicates, external laboratory checks) and whether acceptable levels of accuracy (i.e. lack of bias) and precision have been established.</p>	<p>The laboratory used an aqua regia digest followed by fire assay for with an AAS finish for gold analysis.</p> <p>No geophysical tools were used to determine any element concentrations used in this Resource Estimate.</p> <p>Sample preparation checks for fineness were carried out by the laboratory as part of their internal procedures to ensure the grind size of 90% passing 75 micron was being attained. Laboratory QA/QC involves the use of internal lab standards using certified reference material, blanks, splits and duplicates as part of the in house procedures.</p> <p>Certified reference materials, having a good range of values, were inserted blindly and randomly. Results highlight that sample assay values are accurate and that contamination has been contained.</p> <p>Repeat or duplicate analysis for samples shows that the precision of samples is within acceptable limits.</p> <p>Sample preparation conducted and fire assay performed by BIGS SARL -Assayed by 50g fire assay with AAS finish.</p> <p>QA/QC protocol: For diamond core one blank and one standard inserted for every 18 core samples (2 QA/QC samples within every 20 samples dispatched, or 1 QA/QC sample per 10 samples despatched) and no duplicates.</p> <p>QA/QC protocol: For RC samples we insert one blank, one standard and one duplicate for every 17 samples (3 QA/QC within every 20 samples or 1 every 8.5 samples).</p>
Verification of Sampling and Assaying	<p>The verification of significant intersections by either independent or alternative company personnel.</p> <p>The use of twinned holes The verification of significant intersections by either independent or alternative company personnel.</p> <p>Discuss any adjustment to assay data</p>	<p>WAF's QP R. Hyde has verified significant intersections in diamond core and RC drilling.</p> <p>Primary data was collected using a set of company standard Excel™ templates on Toughbook™ laptop computers using lookup codes. The information was validated on-site by the Company's database technicians and then merged and validated into a final Access™ database by the company's database manager.</p>
Location of Data points	<p>Accuracy and quality of surveys used to locate drill holes (collar and down-hole surveys), trenches, mine workings and other locations used in Mineral Resource estimation.</p> <p>Specification of the grid system used Quality and adequacy of topographic control</p>	<p>All drill holes have been located by DGPS in UTM grid WGS84 Z30N.</p> <p>Down-hole surveys were completed at the end of every hole where possible using a Reflex down-hole survey tool, taking measurements every.</p> <p>DGPS was used for topographic control.</p>
Data Spacing and Distribution	<p>Data spacing for reporting of Exploration Results</p> <p>Whether the data spacing and distribution is sufficient to establish the degree of geological and grade continuity appropriate for the Mineral Resource and Ore Reserve estimation procedure(s) and classifications applied.</p> <p>Whether sample compositing has been applied</p>	<p>The nominal drill hole spacing is 20m (northwest) by 100m (northeast).</p> <p>The mineralised domains have demonstrated sufficient continuity in both geological and grade to support the definition of Mineral Resource and Reserves, and the classifications applied under the 2012 JORC Code.</p> <p>Historic samples have been composited to three metre lengths, and adjusted where necessary to ensure that no residual sample lengths have been excluded (best fit). WAF intends to update the Mankarga 5 Resource following the current work programs, in the first quarter of 2014.</p>

Orientation of Data in Relation to Geological Structure	Whether the orientation of sampling achieves unbiased sampling of possible structures and the extent to which this is known, considering the deposit type. If the relationship between the drilling orientation and the orientation of key mineralised structures is considered to have introduced a sampling bias, this should be assessed and reported if material.	The majority of the data is drilled to either magnetic 120° or 300° orientations, which is orthogonal/perpendicular to the orientation of the mineralised trend. The bulk of the drilling is almost perpendicular to the mineralised domains. Structural logging based on oriented core indicates that the main mineralisation controls are largely perpendicular to drill direction. No orientation based sampling bias has been identified in the data at this point.
Sample Security	The measures taken to ensure sample security	Chain of custody is managed by WAF. Samples are stored on site and delivered by WAF personnel to BIGS Ouagadougou for sample preparation. Whilst in storage, they are kept under guard in a locked yard. Tracking sheets are used track the progress of batches of samples
Audits or reviews	The results of any audits or reviews of sampling techniques and data.	WAF personnel and consultants have completed numerous site visits and data reviews since acquiring the project in 2014. No material issues were noted. A technical report is located on WAF's website.

Section 2 Reporting of Exploration Results		
Criteria	JORC Code Explanation	Commentary
Mineral Tenement and Land Tenure Status	Type, reference name/number, location and ownership including agreements or material issues with third parties such as joint ventures, partnerships, overriding royalties, native title interests, historical sites, wilderness or national park and environmental settings. The security of the tenure held at the time of reporting along with any known impediments to obtaining a licence to operate in the area.	The Boulsa Project tenements covers over 1,600km ² , granting the holders the right to explore for gold. The tenements have been acquired by either direct grant to WAF or its subsidiaries or by contractual agreements with tenement holders. All agreements provide WAF with the right to obtain an ultimate interest of 100%. All licences, permits and claims are granted for gold. All fees have been paid, and the permits are valid and up to date with the Burkinabe authorities. The payment of gross production royalties are provided for by the Mining Code and the amount of royalty to be paid for ranges from 3% (<US\$1000), 4% (\$1000-1300) and 5% (>\$1300).
Exploration Done by Other Parties	Acknowledgment and appraisal of exploration by other parties.	Very little exploration has been carried out over greater project the tenement prior to WAF's involvement which commenced in 2008, with the exception of the Tanlouka Permit. The area comprising the Tanlouka Permit has been held by Channel Resources Ltd since the early 1990's. Work recommenced in earnest on the Tanlouka Permit in 2010. WAF acquired Channel Resources Ltd on January 17th 2014. Available historic records and data were reviewed by both WAF during Due Diligence prior to the acquisition.
Geology	Deposit type, geological setting and style of mineralisation.	The Boulsa Project straddles some 70km strike length of the Manga-Sebba greenstone belt, which bifurcates and trends northeast and east-northeast respectively from southern-central Burkina Faso into Niger over some 450km. The south-eastern portion of the project area covers the southern extension of the Fada N'Gourma Belt. Lithologies comprise volcano-plutonic bodies including amphibolised basalts with amphibolischists, andesites and basalts, rhyolites and rhyodacites, brecciated tuffs, and gabbroic bodies including pyroxenite and serpentinite. Gold mineralisation in the project area is mesothermal orogenic in origin and structurally controlled. The project also contains shear hosted porphyry related copper-gold-molybdenum mineralisation on the Sartenga Permit which is believed to be unique in West Africa."

Drill hole Information	<p>A summary of all information material to the understanding of the exploration results including a tabulation of the following information for all Material drill holes:</p> <ul style="list-style-type: none"> ○ easting and northing of the drill hole collar ○ elevation or RL (Reduced Level – elevation above sea level in metres) of the drill hole collar ○ dip and azimuth of the hole ○ down hole length and interception depth ○ hole length. <p>If the exclusion of this information is justified on the basis that the information is not Material and this exclusion does not detract from the understanding of the report, the Competent Person should clearly explain why this is the case.</p>	Intercepts that form the basis of this announcement are tabulated in Table 1 in the body of the announcement and incorporate Hole ID, Easting, Northing, Dip, Azimuth, Depth and Assay data for mineralised intervals. Appropriate maps and plans also accompany this announcement.
Data aggregation methods	<p>In reporting Exploration Results, weighting averaging techniques, maximum and/or minimum grade truncations (e.g. cutting of high grades) and cut-off grades are usually Material and should be stated. Where aggregate intercepts incorporate short lengths of high grade results and longer lengths of low grade results, the procedure used for such aggregation should be stated and some typical examples of such aggregations should be shown in detail. The assumptions used for any reporting of metal equivalent values should be clearly stated.</p>	All intersections are assayed on one meter intervals No top cuts have been applied to exploration results. Mineralised intervals are reported with a maximum of 2m of internal dilution of less than 0.2g/t Au. Higher grade zones are reported with a maximum of internal dilution of less than 2g/t Au of internal dilution. Mineralised intervals are reported on a weighted average basis.
Relationship between mineralisation widths and intercept lengths	<p>These relationships are particularly important in the reporting of Exploration Results. If the geometry of the mineralisation with respect to the drill hole angle is known, its nature should be reported. If it is not known and only the down hole lengths are reported, there should be a clear statement to this effect (e.g. ‘down hole length, true width not known’).</p>	The orientation of the mineralised zone has been established and the majority of the drilling was planned in such a way as to intersect mineralisation in a perpendicular manner. However, due to topographic limitations some holes were drilled from less than ideal orientations.
Diagrams	<p>Appropriate maps and sections (with scales) and tabulations of intercepts should be included for any significant discovery being reported These should include, but not be limited to a plan view of drill hole collar locations and appropriate sectional views.</p>	The appropriate plans and sections have been included in the body of this document.
Balanced reporting	<p>Where comprehensive reporting of all Exploration Results is not practicable, representative reporting of both low and high grades and/or widths should be practiced to avoid misleading reporting of Exploration Results.</p>	All grades, high and low, are reported accurately with “from” and “to” depths and “hole identification” shown.
Other substantive exploration data	<p>Other exploration data, if meaningful and material, should be reported including (but not limited to): geological observations; geophysical survey results; geochemical survey results; bulk samples – size and method of treatment; metallurgical test results; bulk density, groundwater, geotechnical and rock characteristics; potential deleterious or contaminating substances.</p>	Preliminary metallurgical test work has been completed, with excellent results. Gold recoveries exceed 95% from oxide bottle roll tests, exceed 92% for sulphide bottle roll tests and a significant proportion of the gold is recoverable by gravity concentration. Additional metallurgical test work is planned.
Further work	<p>The nature and scale of planned further work (e.g. tests for lateral extensions or depth extensions or large-scale step-out drilling). Diagrams clearly highlighting the areas of possible extensions, including the main geological interpretations and future drilling areas, provided this information is not commercially sensitive.</p>	Further infill drilling is planned and is ongoing, aimed at increasing the amount of resource categorized as Indicated, as well as upgrading some of the Indicated Resource to Measured status. Drilling aimed at increasing the Resource below the current depth extent is also planned. A figure showing proposed work programs is included in the body of this report.