

BRAZILIAN LITHIUM PROJECT UPDATE: FURTHER APPLICATIONS SECURED AT SOLONOPOLE

HIGHLIGHTS:

- additional 5 applications covering an area of 8,276Ha secured adjacent to existing applications at Solonopole.
- Cougar’s Brazilian Lithium Project now comprises 35 applications covering ~60,000ha.
- project incorporates two separate areas lying ~100kms apart, being (i) an area covering the historical lithium mining centre at Solonopole, and (ii) an area encompassing the Cristal pegmatite swarm.

Cougar Metals NL (ASX Code: CGM) (“**Cougar**” or “**Company**”) is pleased to announce that it has further consolidated its land-holding at its Solonopole Project by securing a further 5 applications adjacent to existing applications at Solonopole (see *Figure 1 below*).

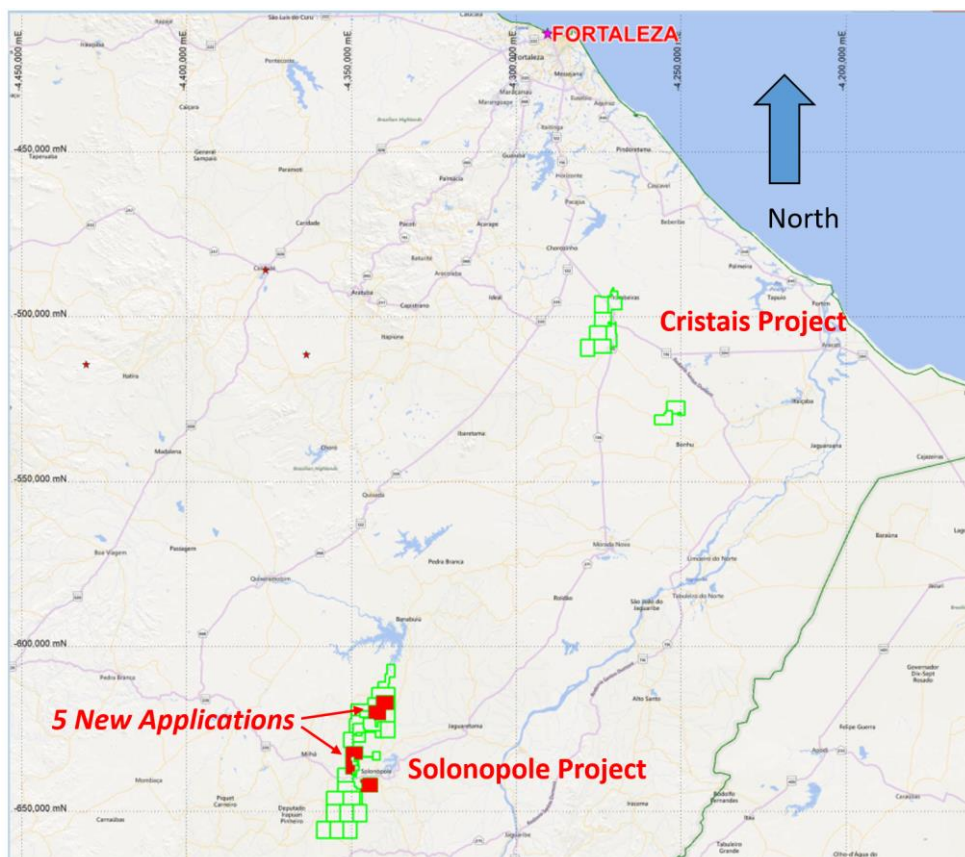


Figure 1: Map of tenement applications held; new applications in red

Cougar has prepared a staged exploration program to commence following the granting of applications.

Exploration will initially target the area in and around the historical mining centre of Solonopole.

For further information please contact the undersigned via email at r.swick@cgm.com.au or alternatively contact Michael Fry (Director, CFO & Company Secretary) on +61 8 9226 5002.

Yours sincerely

COUGAR METALS NL



RANDAL SWICK

Executive Chairman

Forward Looking Statements

Statements contained in this release, particularly those regarding possible or assumed future performance, costs, dividends, production levels or rates, prices, resources, reserves or potential growth of Cougar Metals NL, industry growth or other trend projections are, or may be, forward looking statements. Such statements relate to future events and expectations and, as such, involve known and unknown risks and uncertainties. Actual results and developments may differ materially from those expressed or implied by these forward looking statements depending on a variety of factors.

Competent Persons Statement

Information in this report relates to exploration results that are based on information compiled by Mr Beau Nicholls (Member of the Australasian Institute of Geoscientists). Mr Nicholls is a fulltime employee of Sahara Mining Services and has sufficient experience which is relevant to the style of mineralisation and type of deposits under consideration and to the activities undertaken to qualify as a Competent Person as defined in the 2012 edition of the 'Australasian Code for Reporting of Exploration Results, Mineral Resources and Ore Reserves'. Mr Nicholls consents to the inclusion in the release of the statements based on his information in the form and context in which they appear.