



*Acquisition of the Mt Gilmore Project
New South Wales, Australia*



Company Presentation

ASX : CZN

21 June 2016

FORWARD LOOKING STATEMENTS

- This presentation has been prepared by Corazon Mining Limited (“Corazon”). It contains forecasts and forward looking statements which are not a guarantee of future performance and which involve certain risks. Actual results and future outcomes will in all likelihood differ from those outlined herein. The presentation should not be construed as an offer or invitation to subscribe for or purchase securities in Corazon. Nor is it an inducement to make an offer or an invitation with respect to said securities.
- Forward-looking statements are statements that are not historical facts. Words such as “expect(s)”, “feel(s)”, “believe(s)”, “will”, “may”, “anticipate(s)” and similar expressions are intended to identify forward-looking statements. These statements include, but are not limited to statements regarding future production, resources or reserves and exploration results. All such statements are subject to certain risks and uncertainties, many of which are difficult to predict and generally beyond the control of the Company, that could cause actual results to differ materially from those expressed in, or implied or projected by, the forward-looking information and statements. These risks and uncertainties include, but are not limited to: (i) those relating to the interpretation of drill results, the geology, grade and continuity of mineral deposits and conclusions of economic evaluations, (ii) risks relating to possible variations in reserves, grade, planned mining dilution and ore loss, or recovery rates and changes in project parameters as plans continue to be refined, (iii) the potential for delays in exploration or development activities or the completion of feasibility studies, (iv) risks related to commodity price and foreign exchange rate fluctuations, (v) risks related to failure to obtain adequate financing on a timely basis and on acceptable terms or delays in obtaining governmental approvals or in the completion of development or construction activities, and (vi) other risks and uncertainties related to the Company’s prospects, properties and business strategy. Our audience is cautioned not to place undue reliance on these forward-looking statements that speak only as of the date hereof, and we do not undertake any obligation to revise and disseminate forward-looking statements to reflect events or circumstances after the date hereof, or to reflect the occurrence of or non-occurrence of any events.

NEW HIGH GRADE COBALT-COPPER-GOLD PROJECT



Announcement

16 June 2016

CZN to Acquire High Grade Cobalt-Copper-Gold Project

- Corazon executes agreement for exclusive right to earn up to 80% of the Mt Gilmore Cobalt-Copper-Gold Project in N.S.W., Australia.
- Project includes the Cobalt Ridge Prospect - an advanced high-grade cobalt project boasting:
 - Multiple drill results of +1% cobalt with copper and gold credits
 - Maximum individual 1m drill results are 3.38% cobalt, 3.18% copper and 4.92 g/t gold
 - Minimal drilling required to define resource
 - Mineralisation remains open in all directions:
 - 300m strike drilled, width 50m to 120m
 - Multiple zones
 - Numerous undrilled geochemical anomalies
- Project package also includes an emerging copper-gold district:
 - Five existing large scale copper-gold targets (four undrilled)
 - Multiple historic workings
 - Extensive outcropping sulphide mineralisation
- The Mt Gilmore Cobalt-Copper-Gold Project complements Corazon's Lynn Lake Nickel-Copper-Cobalt Project in Canada.
- \$1 million placement completed primarily to fund the acquisition and exploration of the Mt Gilmore Project.

PURCHASE AGREEMENT

Exclusive right to earn up to an 80% interest in the Mt Gilmore Project

- **Corazon can earn an initial 51% interest by:**
 - Issuing Providence 25 million Corazon Mining Limited shares
 - Paying cash reimbursements of costs totalling \$100,000, and
 - Spending \$200,000 on exploration within the first 12 months.
- **Corazon can earn a further 29% interest (totalling 80%) by:**
 - Completing \$2M in exploration within 3 years from commencement of the Agreement,
 - Paying \$150,000 in cash or shares upon the earlier of the commencement of the third year and Corazon spending a minimum of \$500,000 on exploration, and
 - Paying \$250,000 in cash or shares upon earning 80% equity in the Project.
- Corazon has the opportunity to extend this earn-in period by one year by paying \$50,000 in cash or shares.
- Upon the Company earning 80% equity in the Project, Providence will be free carried until a decision to mine is made.
- Once a decision to mine is made, Providence will then have the opportunity to contribute to expenditure requirements according to its working interest, or dilute to a net smelter royalty of 2.0%. Corazon has the right to purchase 1% of the royalty for \$3M at any stage.

CORPORATE OVERVIEW

Current Capital Structure

Market Cap. @ 0.7 cps	A\$	4.7M
Shares on Issue	#	527M
Options on Issue	#	7.5M
Cash (approximate)	A\$	0.5M
52 week share trading range	A\$	\$0.003 – 0.010

Post Acquisition & Raising Capital Structure

Market Cap. @ 0.9 cps	A\$	5.8M
Shares on Issue	#	648.4M ⁽¹⁾
Options on Issue	#	27.5M ⁽¹⁾
Cash (approximate)	A\$	1.5M
52 week share trading range	A\$	\$0.003 – 0.010

Board & Management

Clive Jones	Non Executive Chairman
Brett Smith	Managing Director
Jonathan Downes	Non-Executive Director
Adrian Byass	Non-Executive Director
Rob Orr	Company Secretary

Company Focus

ASX listed exploration company

New project acquisition – NSW Australia

- Cobalt-copper-gold
- Advanced high-grade cobalt deposit

Placement – for project acquisition & exploration

- Raising up to ~A\$1 million⁽¹⁾
- ~181.8 million new shares⁽¹⁾
- Issue price at 0.55 cents per share

Canadian brown-fields exploration project

- Nickel-copper-cobalt
- Development opportunity
- Good exploration upside potential

(1) Tranche 2 and Options subject to Shareholder approval

COBALT MARKET AND OUTLOOK

Future Cobalt Requirements

- The rechargeable battery market remains the industry's growth driver, with demand from this sector up 11.7% in 2015.
- Automotive related battery demand rapidly gaining momentum; Chinese sales of "New Energy Vehicles" up 343% in 2015.
- Cobalt is the preferred cathode element in lithium ion batteries which currently offer the best commercially accepted energy storage capacity.
- Refiners are shifting resources and capacity from "lithium cobalt oxide" material production to "lithium nickel manganese cobalt oxide" - market to increase 4-fold by 2020.

Supply / Demand Balance

- Demand growth outpaced supply growth in 2015 – despite suppressed traditional cobalt usage.
- Market balance expected to move into deficit territory from 2016 onwards.
- China imports 93% of its cobalt from the DRC – possible supply chain issues.
- No new cobalt bearing mining projects expected before 2018-2019.
- Pressure to reduce supply of nickel; 65% of producers under-water at current metal prices.
 - Cobalt as a by-product of nickel production also to be affected.

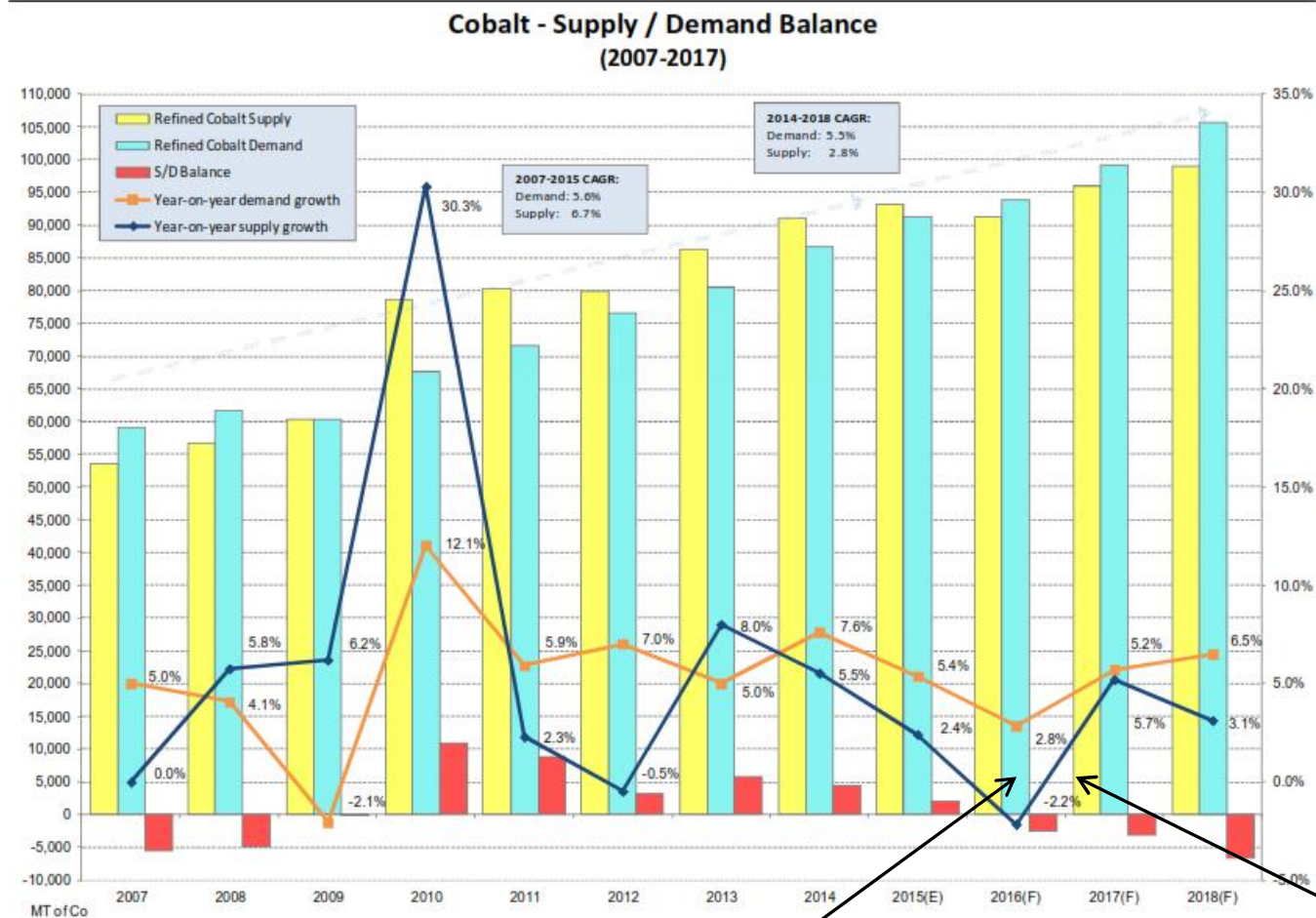
References:

Darton Commodities Limited – Cobalt Market Review 2015-2016

J Petersen Investor Intel.com April, 2016

Macquarie Wealth Management – Commodities Comment – 12 May 2016

COBALT MARKET AND OUTLOOK



Source: Darton Commodities Ltd. estimates

2016: Pessimistic projection for demand growth – continued slow-down

2017: Includes the recommencement of operations previously closed

Good possibility for healthier demand fundamentals from growth in the battery sector

MT GILMORE PROJECT

Location

- North-eastern NSW
- 35km NW from Grafton

Tenure

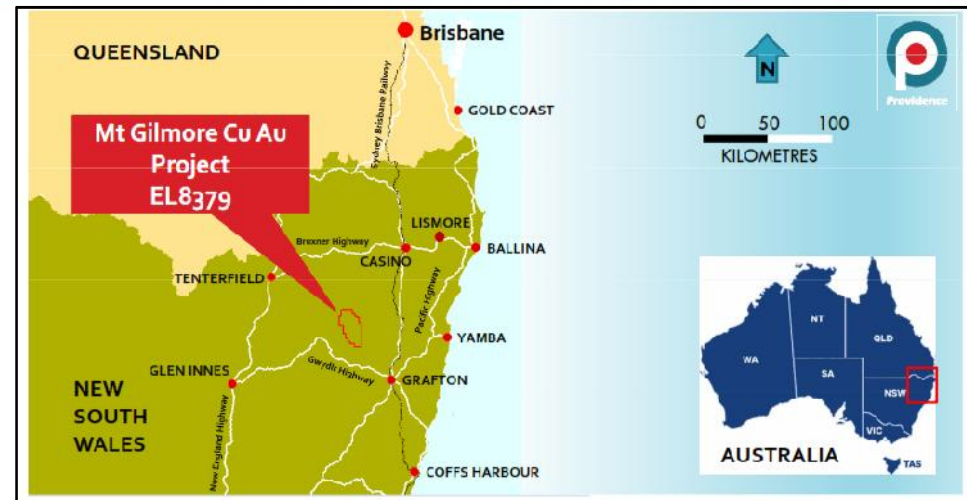
- Granted Exploration Licence
- 100% Providence Gold and Minerals Pty Ltd

Access

- Daily flights from Sydney
- Sealed road access to Project
- Logging tracks, farm roads and mine roads provide excellent access

Landform

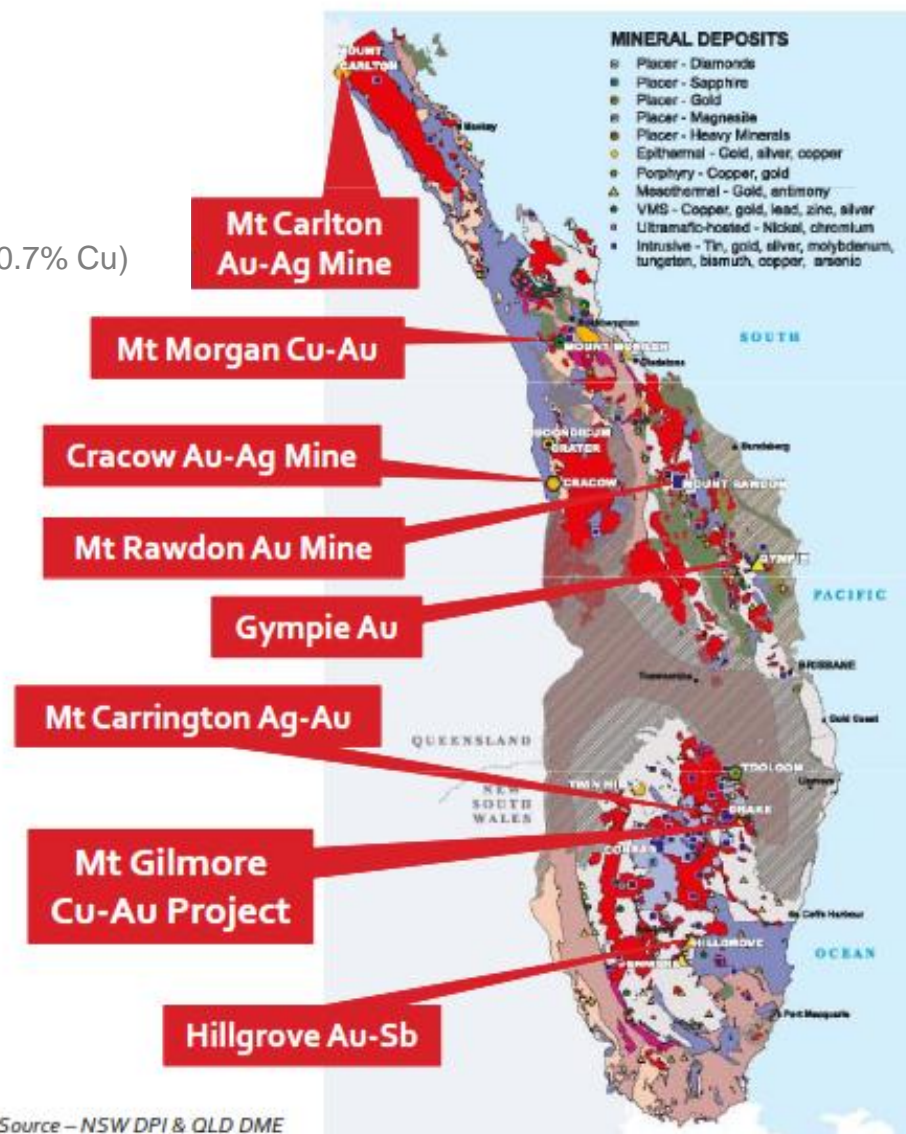
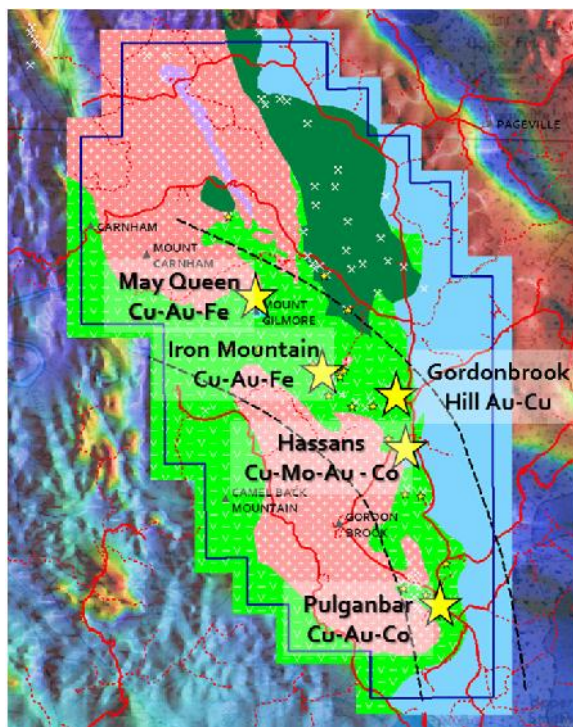
- Open rolling pasture paddocks, stock grazing, steeper wooded bush land, some steep dense areas of thicker native vegetation.



MT GILMORE – PROSPECTIVITY & SETTING

Located in the New England Orogen

- Significant eastern Australia mineral province
- Gold endowment +35M ounces
- Potential to host large copper-gold systems
 - Mt Morgan Cu-Au Mine (+50Mt @ 5.9 g/t Au and 0.7% Cu)
 - Mt Rawdon Au Mine (50Mt @ 0.71 g/t Au)



Source – NSW DPI & QLD DME

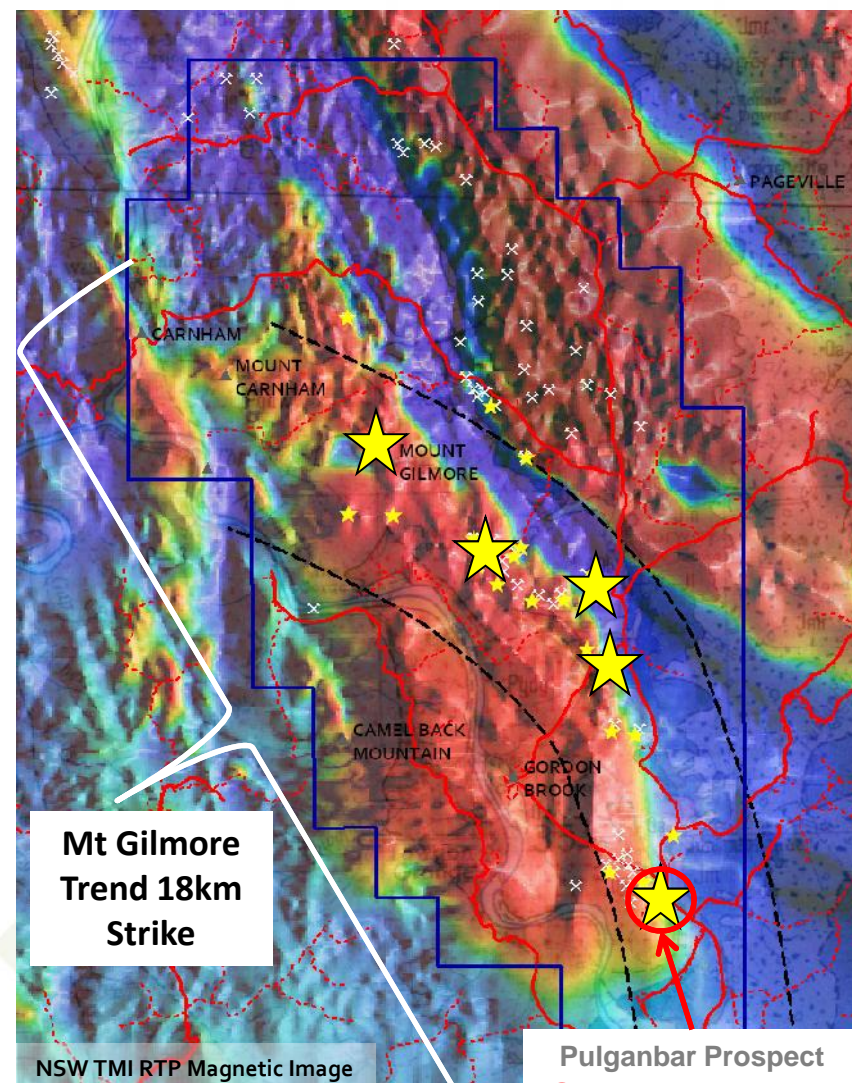
MT GILMORE – PROSPECTIVITY & SETTING

Located in the New England Orogen

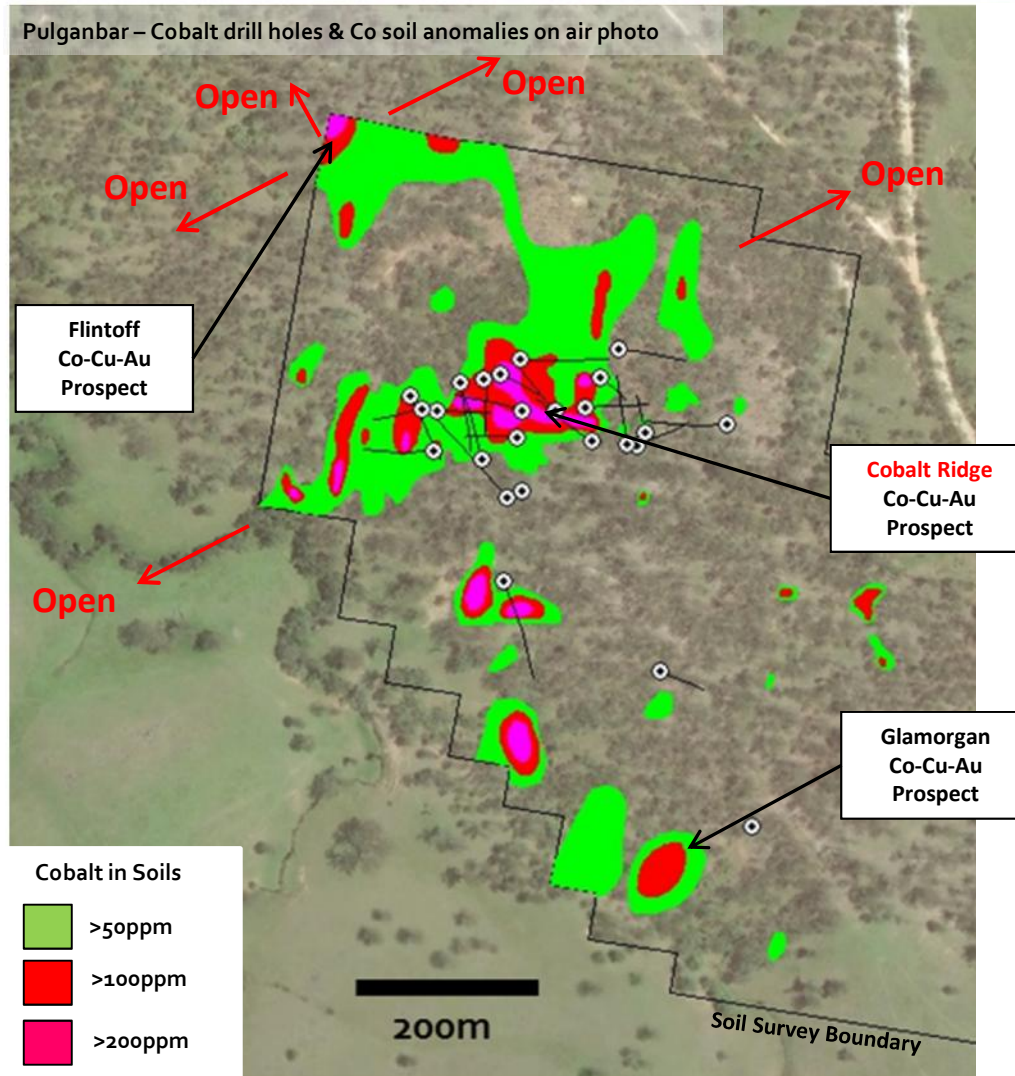
- Significant eastern Australia mineral province
- Gold endowment +35M ounces
- Potential to host large copper-gold systems
 - Mt Morgan Cu-Au Mine (+50Mt @ 5.9 g/t Au and 0.7% Cu)
 - Mt Rawdon Au Mine (50Mt @ 0.71 g/t Au)

Mt Gilmore - a district scale opportunity

- Emerging Cu-Au province
- Mineralised “Mt Gilmore Trend” 18km strike
- Poorly explored and largely undrilled
- +25 historic Cu-Au-Co-Fe workings and small mines
- Five large Cu-Au targets identified to date
- Target models include tourmaline breccia hosted Cu-Au deposits, Cu-Au-Fe skarns and quartz-sulphide vein system (such as porphyry Cu-Au deposits)
- Corazon’s initial focus is a small high-grade Co-Cu-Au deposit – Cobalt Ridge



PULGANBAR – COBALT RIDGE PROSPECT



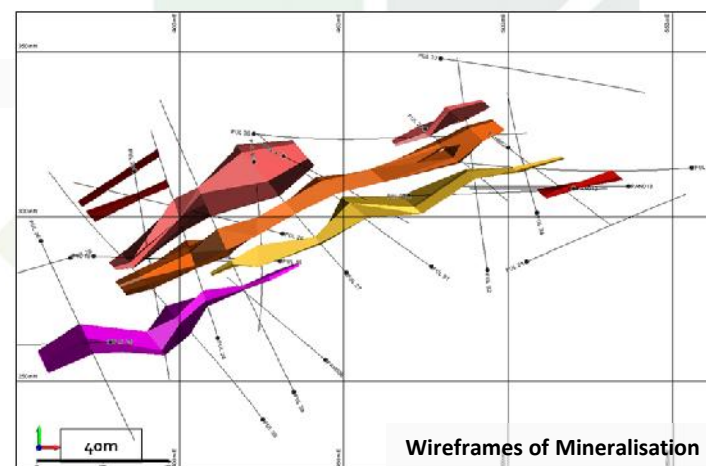
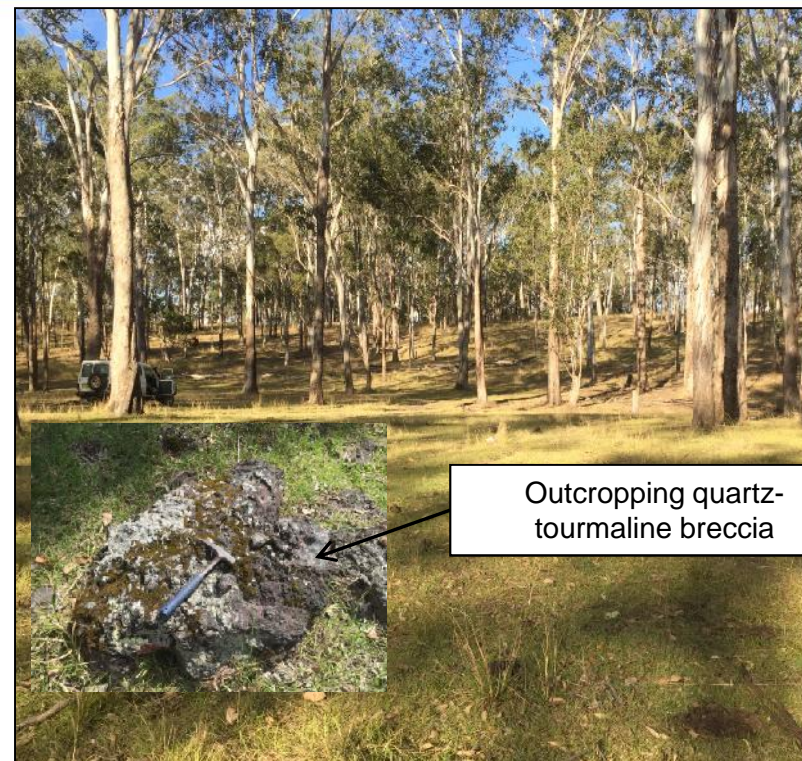
Advanced High-Grade Cobalt Project

- Multiple zones of sulphide mineralisation.
- Drilled over 300m strike and open -
 - Extensions indicated by geophysics.
- Width 50 to 120m -
 - Main Zone approximately 20m wide.
- Potential to “bulk out” deposit or focus on narrow higher grade material.
 - Multiple drill results of +1% Co,
 - Maximum individual 1m drill results of 3.38% Co, 3.18% Cu & 4.92 g/t Au,
 - Historical mining records report grades up to 14.7% Co and 1.7 oz/ton Au.
- Numerous nearby surface cobalt anomalies provide upside potential.

PULGANBAR – COBALT RIDGE PROSPECT

Hole ID	Interval (m)		Width (m)	Co %	Cu %	Au g/t
	From	To				
PUL 18	37	53	16	0.30	0.21	0.10
Incl.	39	41	2	0.67	0.42	0.26
Incl.	51	52	1	1.46	1.14	0.57
	58	73	15	0.15	0.10	0.05
	96	107	11	0.32	0.18	0.11
PUL 19	24	30	6	0.37	0.55	0.19
Incl.	25	27	2	0.53	0.75	0.22
Incl.	29	30	1	0.87	1.38	0.59
	35	41	6	0.23	0.31	0.08
	59	76	17	0.37	0.13	0.17
Incl.	67	70	3	1.52	0.24	0.65
PUL 24	71	79	8	0.43	0.10	0.06
Incl.	77	79	2	0.66	0.13	0.07
PUL 27	62	65	3	0.38	1.64	0.63
	70	85	15	0.24	0.90	0.42
Incl.	73	76	3	0.55	2.30	0.90
PUL 29	79	98	19	0.32	0.24	0.12
Incl.	96	98	2	1.91	1.63	0.87
PUL 38	71.13	79.22	8.09	0.27	0.91	0.30
Incl.	75.43	76.5	1.07	1.40	3.18	1.30
	132.8	135.43	2.63	0.51	0.90	0.17
Incl.	133.65	134.64	0.99	1.07	0.80	0.19
	162	167.23	5.23	0.60	0.14	0.09
Incl.	162	163.34	1.34	1.67	0.43	0.30
	172.1	175.02	2.92	0.50	0.32	0.18
Incl.	174.42	175.02	0.6	2.12	1.05	0.86
PUL 40	54	63	9	0.18	0.40	0.13
	73	75	2	0.50	0.41	0.14
PUL 41	25	39	14	0.10	0.13	0.06
Incl.	33	34	1	0.48	0.07	0.12

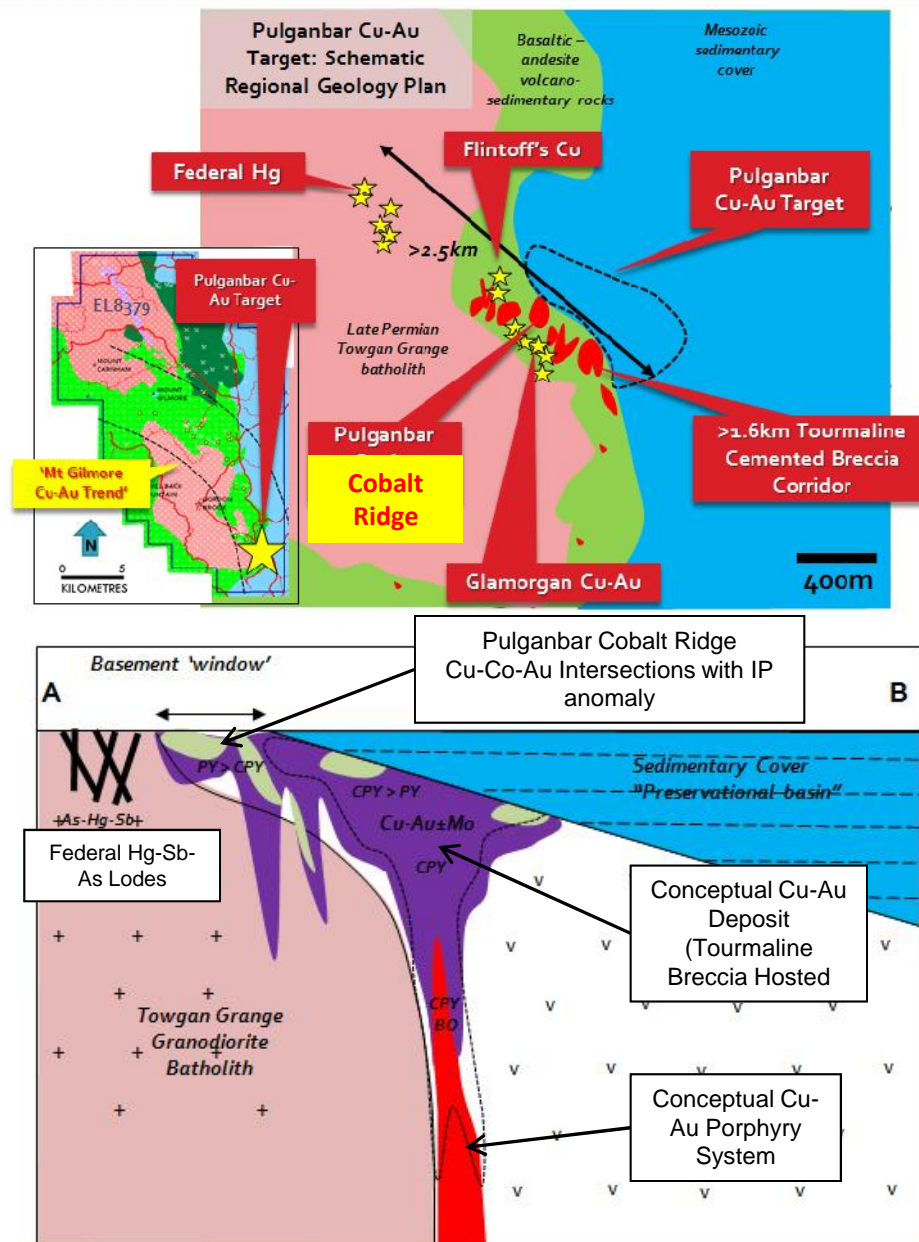
Table 1: Significant **drilling intercepts** as reported by Central West Gold NL between 2006 and 2008. Results >0.10% Co, utilizing a >500ppm cut-off and <3m internal dilution. Drill hole collar details presented in Table 2 attached.



PULGANBAR COBALT-COPPER-GOLD DISTRICT

Cobalt Ridge is part of a much larger system – the Pulganbar Prospect

- Large (>2.5km x >1km) zoned, Cu-Au-Co rich hydrothermal alteration zone.
- Numerous historic Cu-Co-Au workings with significant shafts, drives and adits.
- Mineralisation defined by mining, drilling and trenching may be marginal to a much larger and higher grade Cu-Au centre.
- Gold in historic trench sampling confirm the tourmaline breccia system is a fertile gold rich system.
 - 5m @ 2.28 g/t Au, Incl 1m @ 7.1g/t Au
 - 6m @ 5.6g/t Au
 - 4m @ 3.26g/t Au
 - 6m @ 4.27g/t Au & 0.3% Cu, Incl. 1m @ 9.2g/t Au
- Large, high tenor, semi-coincident Au-Cu-As-Co-Te soil anomalies increase in intensity and remain open up to the base of sedimentary cover.
- Drilled Cu-Au intersections and a coincident IP chargeability anomaly remain open up to the base of cover.



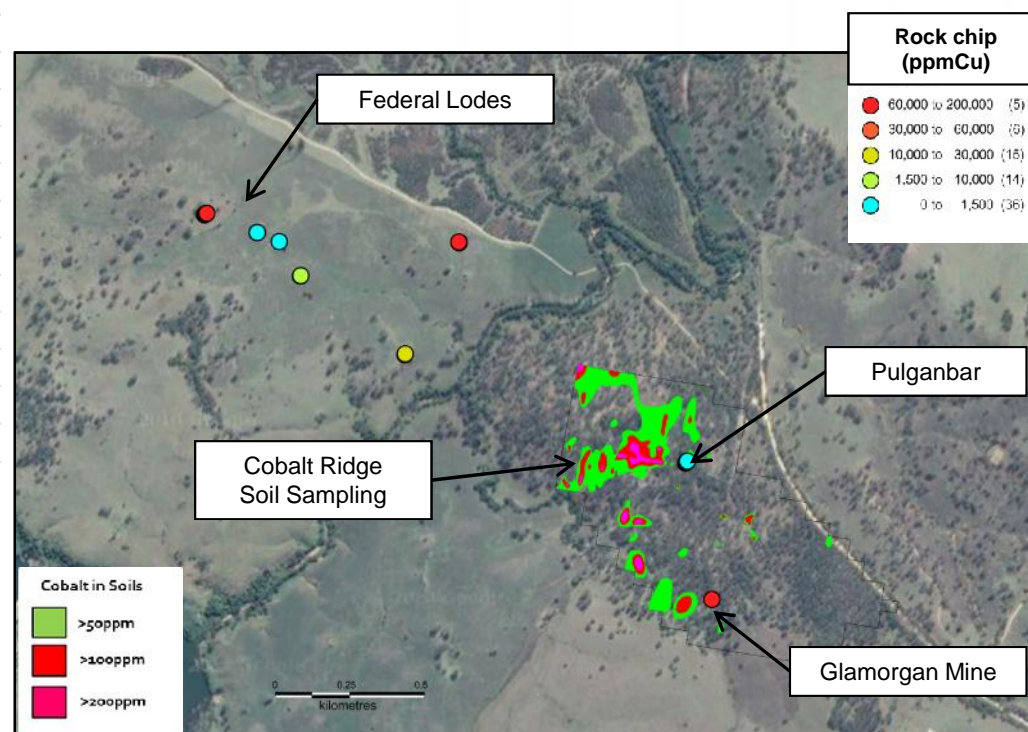
PULGANBAR ROCK CHIP SAMPLING - 2016

Sample ID	Prospect	Cu %	Au ppm	Ag ppm	Fe %	Mo ppm	Sb ppm
Pulganbar							
MG0045	Federal Cu Lodes	8.50	0.1	30.9	28.3	474	3.08
MG0076	Federal Cu Lodes	6.37	0.041	32.6	20.7	46.2	>10000
MG0052	Federal Cu Lodes	4.79	0.142	44.7	15.1	158	>10000
MG0054	Federal Cu Lodes	3.13	0.056	30.6	10.55	225	>10000
MG0044	Federal Cu Lodes	2.16	0.168	22.1	17.35	241	2.19
MG0047	Federal Cu Lodes	1.65	0.011	13.05	4.56	2.59	353
MG0056	Federal Cu Lodes	1.61	0.121	43.9	10.75	42.2	>10000
MG0050	Federal Cu Lodes	1.58	0.008	6.71	27.6	58.5	7140
MG0051	Federal Cu Lodes	1.17	0.018	5.93	10.85	88.4	4800
MG0049	Federal Cu Lodes	1.13	0.024	9.78	22.1	211	6790
MG0057	Federal Cu Lodes	1.02	0.068	24.8	6.64	57.1	3330
MG0055	Federal Cu Lodes	0.40	0.038	4.93	30.3	847	574
MG0048	Federal Cu Lodes	0.08	0.027	1.07	3.11	5.99	238
MG0046	Federal Cu Lodes	0.04	0.191	1.07	3.54	23.8	>10000
MG0053	Federal Cu Lodes	0.02	0.004	0.21	4.92	2.49	74.8
MG0058	Glamorgan Cu Mine	13.55	0.003	66	4.82	9.69	61
MG0067	Pulganbar	0.07	0.266	0.41	8.85	1.12	44.4
MG0070	Pulganbar	0.05	0.183	0.68	7.24	0.36	6.16
MG0069	Pulganbar	0.04	0.41	0.59	7.44	2.06	21.8
MG0068	Pulganbar	0.03	0.131	0.39	7.88	3.06	23.4



High grade copper and cobalt mineralisation is part of a large hydrothermal system

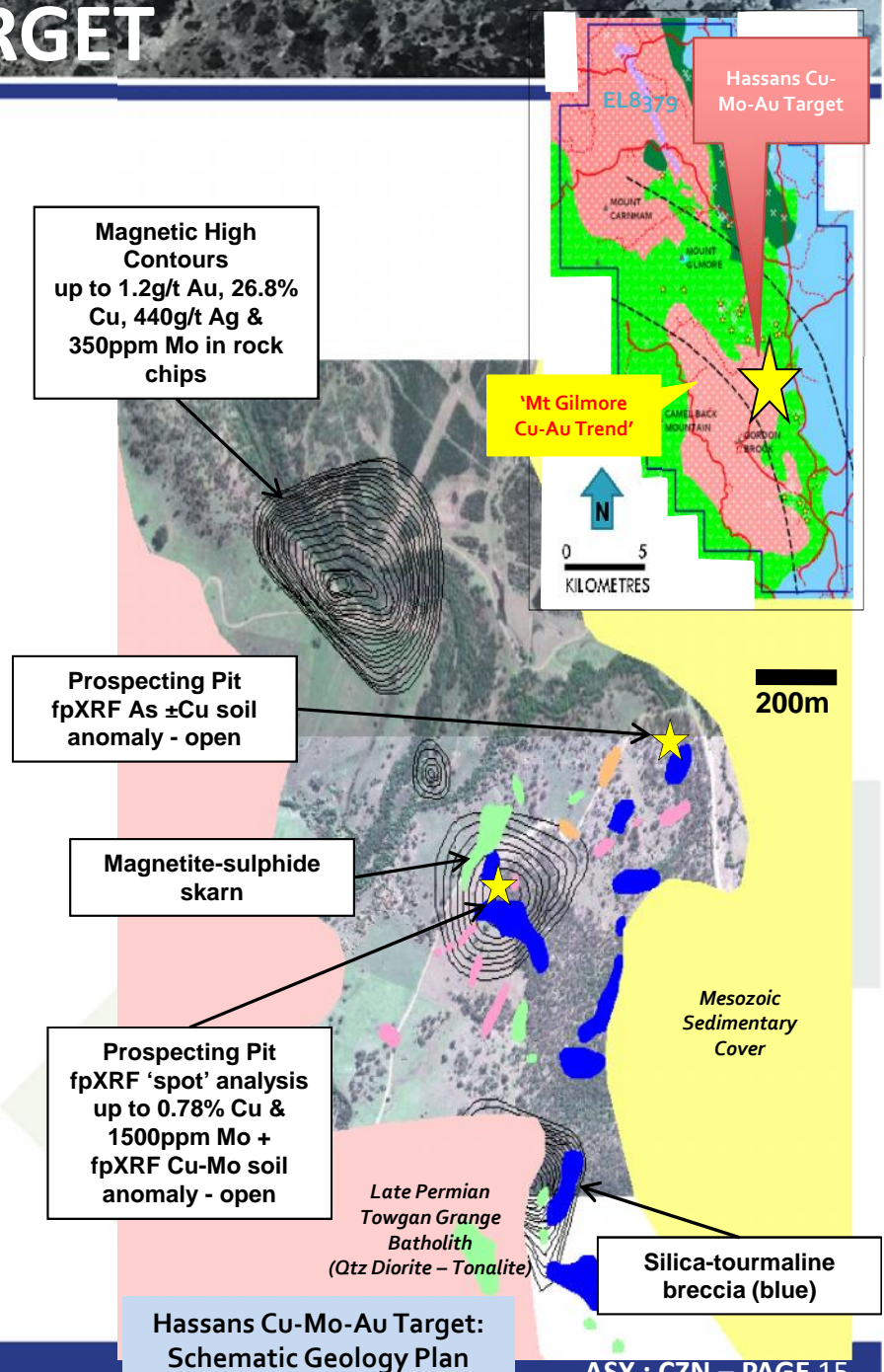
- Recent rock-chip sampling has supported historical production grades and surface sampling results.
- A 2km zone with multiple high-grade Cu lodes identified between Glamorgan and Federal prospects.



HASSANS CU-MO-AU-CO TARGET

A 'window' through to basement rocks identifies exceptional prospectivity

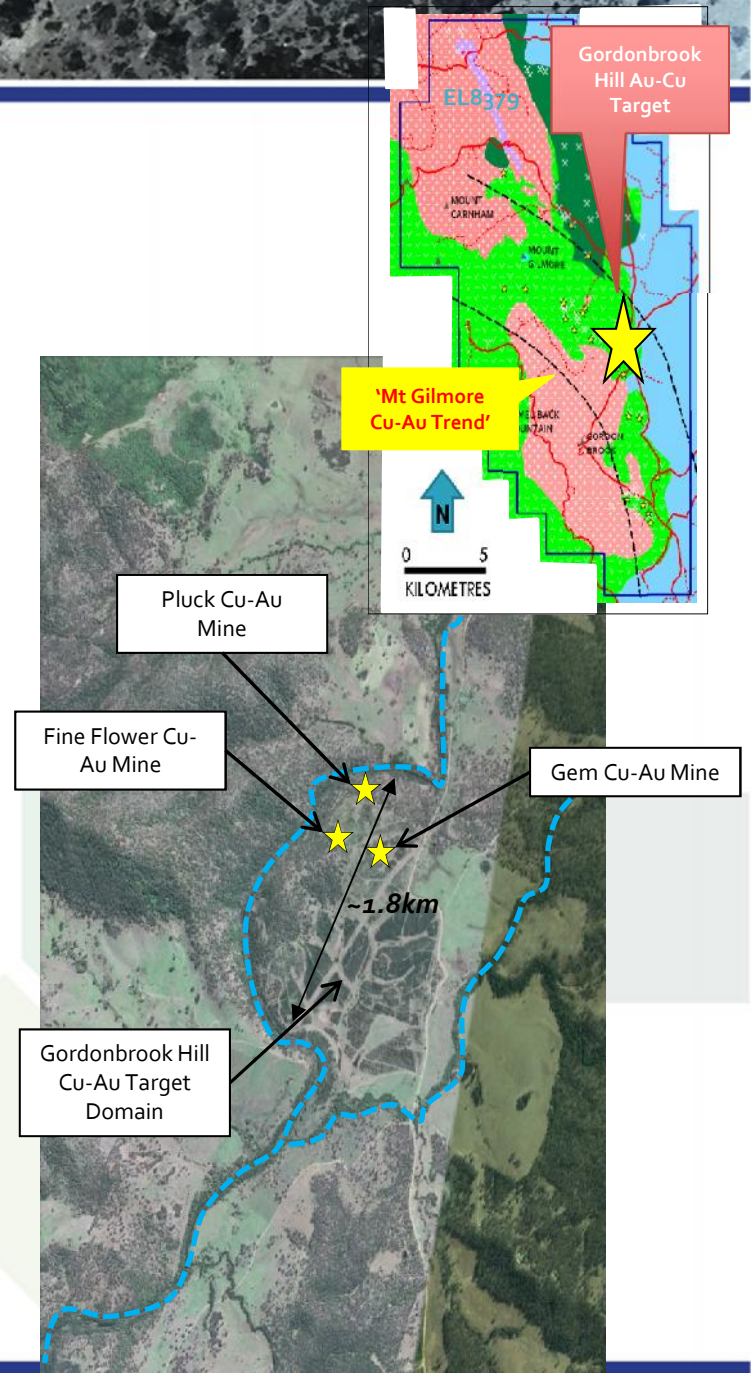
- Large (>1.5km x >1.5km), zoned silica-tourmaline-limonite (after sulphide) breccia / hydrothermal alteration zone
- Possibly part of an intrusive related Cu-Au mineralised system.
- Numerous small scale prospecting pits associated with gossanous, silica-tourmaline-limonite cemented breccia & skarn style hydrothermal alteration, including massive magnetite and limonite (after sulphide) skarn float.
- Historic rock chips samples up to **1.2g/t Au, 26.8% Cu, 440g/t Ag & 350ppm Mo**, with recent fpXRF 'spot' analysis returning up to ~1500ppm Mo & 0.78% Cu.
- Orientation fpXRF soil geochemical survey returned open Cu (>400m long, up to 333ppm Cu), Mo (>300m long, up to 15ppm Mo), As (>200m x >240m) up to 231ppm As, and 792ppm Co soil geochemical anomalies.



GORDONBROOK HILL TARGET

Significant Cu-Au mineralisation associated with silica-tourmaline-chalcopyrite-pyrite cemented breccias

- Large intrusive related, hydrothermal alteration zone associated with a topographic high (>1.8km x >1.0km)
- Historic Fine Flower, Gem & Pluck Cu-Au mines with multiple shafts, drives, adits & smelter site.
- Mineralisation at Gem, Pluck & Fine Flower are considered to represent 'leakage structures' related to a much larger Cu-Au system \Rightarrow the Gordonbrook Hill Cu-Au Target
- Considered prospective for silica-tourmaline-chalcopyrite breccia hosted Cu-Au deposits & transitional epithermal to porphyry type, quartz-carbonate-sulphide vein hosted Cu-Au deposits, including porphyry Cu-Au deposits.
- Very limited previous exploration & undrilled.



GORDONBROOK HILL TARGET

Pluck Cu-Au Mine

- Cu-Au mine with two shafts, two adits and two drives 15m & 24m below surface. ~200m strike.
- Opened 1883, smelter constructed in 1907. Grade of 13% Cu is reported between 1903-1907.
- 18 historic rock chips from waste dumps averaged 0.36g/t Au & 2.31% Cu with up to 1.68g/t Au & 9.1% Cu.

*No previous drill testing reported
Walk up drill target*

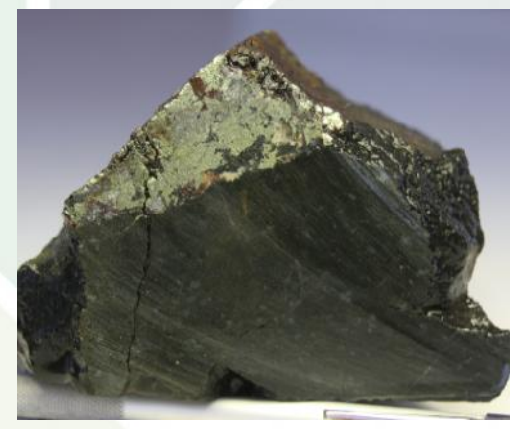


Gem Cu-Au Mine

- Cu-Au mine with two sizeable shafts and adits (backfilled) - production unknown.
- Significant copper (malachite – azurite – chalcopyrite) observed at surface.

Fine Feather Cu-Au Mine

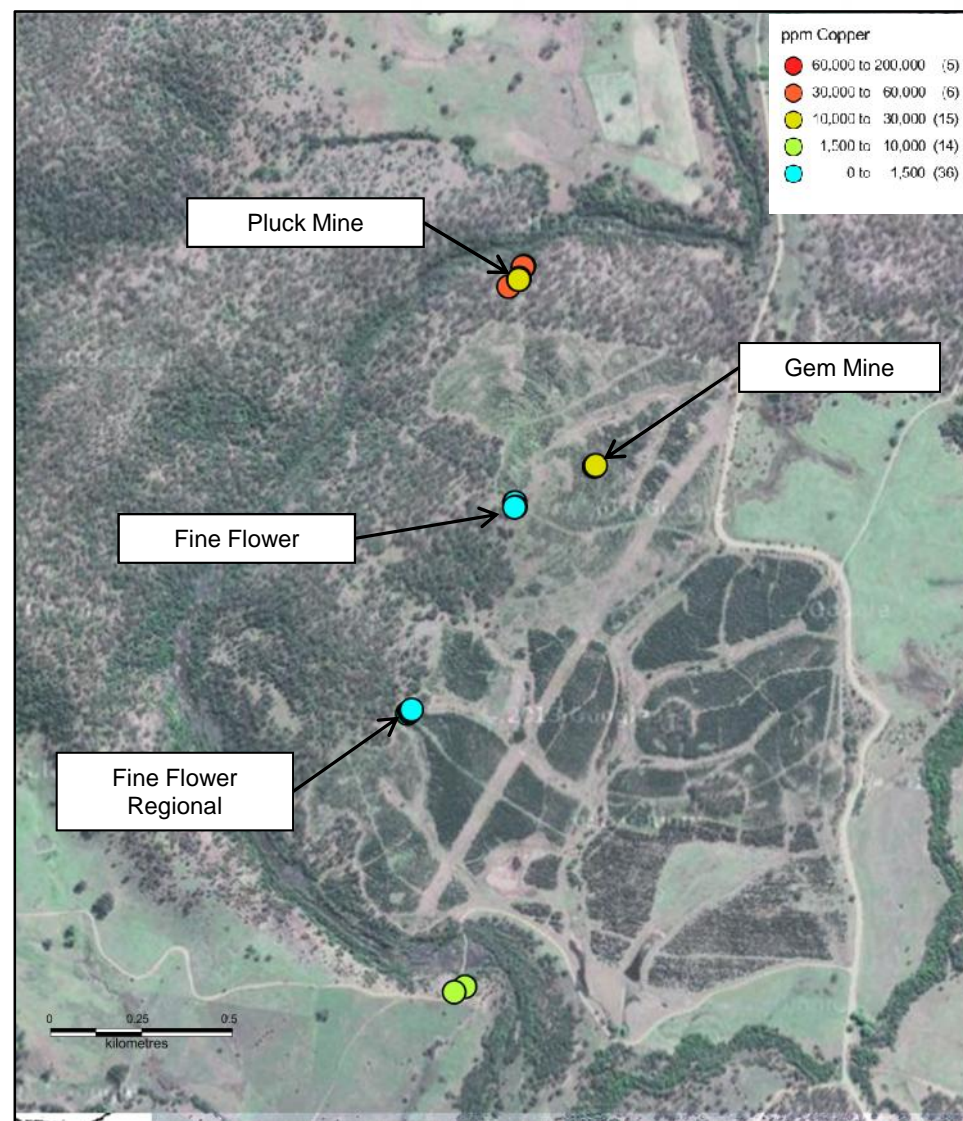
- Cu-Au mine discovered in 1905 with reverberatory furnace constructed in 1909.
- Three shafts with at least 100 tons of ore produced before smelter closed. 7 tons graded 23% Cu, 0.84 g/t Au & 11g/t Ag.
- Four historic rock chips returned up to 0.60% Cu & 0.13g/t Au



GORDONBROOK ROCK CHIP SAMPLING - 2016

Mineralisation at Gem, Pluck & Fine Flower possible 'leakage structures' from large Cu-Au system

Sample ID	Prospect	Cu	Au	Ag	Fe	Mo	Sb
		%	ppm	ppm	%	ppm	ppm
MG0039	Pluck Cu-Au Mine	7.35	1.29	87.5	8.92	1.36	20.5
MG0036	Pluck Cu-Au Mine	4.98	0.901	76.9	11.95	1.44	7.76
MG0016	Pluck Cu-Au Mine	3.95	0.028	25.4	7.58	6.68	41.9
MG0017	Pluck Cu-Au Mine	2.00	0.121	17.9	14	3.59	1.95
MG0042	Pluck Cu-Au Mine	1.67	0.442	53.4	7.84	2.61	18.5
MG0019	Pluck Cu-Au Mine	1.56	0.178	20.4	4.37	0.86	14.6
MG0018	Pluck Cu-Au Mine	1.29	0.332	17.05	4.79	1.05	24.6
MG0040	Pluck Cu-Au Mine	0.95	0.063	8.23	7.54	1.98	2.79
MG0037	Pluck Cu-Au Mine	0.83	0.014	9.52	7.1	0.93	25.9
MG0038	Pluck Cu-Au Mine	0.60	0.006	7.39	4.33	0.71	13.75
MG0023	Pluck Cu-Au Mine	0.57	0.013	9.09	9.03	6.54	6.3
MG0041	Pluck Cu-Au Mine	0.46	0.05	4.16	6.36	2.23	11.05
MG0008	Fine Flower Cu Mine	0.02	0.068	0.83	10.2	6.29	13.55
MG0009	Fine Flower Cu Mine	0.01	0.065	0.39	7.32	7.86	7.95
MG0034	Regional - Fine Flower Cu	0.06	0.005	0.12	19.8	0.79	1.44
MG0007	Regional - Fine Flower Cu	0.03	0.009	0.14	25.2	0.95	4.22
MG0010	Regional - Fine Flower Cu	0.02	0.002	0.27	10.2	5.54	1.08
MG0033	Regional - Fine Flower Cu	0.02	0.006	0.14	15.25	1.08	2.82
MG0035	Regional - Fine Flower Cu	0.01	0.008	0.11	4.82	3.08	1.43
MG0006	Regional - Fine Flower Cu	<0.01	0.002	0.06	14.7	1.41	0.99
MG0012	Gem Cu-Au Mine	16.30	0.079	238	14.8	4.62	14.5
MG0014	Gem Cu-Au Mine	5.43	0.042	107	12.45	3.5	41.1
MG0011	Gem Cu-Au Mine	1.69	0.043	16.05	8.13	1.71	27.6
MG0015	Gem Cu-Au Mine	1.37	0.033	34.8	9.8	2.8	27.4
MG0013	Gem Cu-Au Mine	1.19	0.037	31.7	10.95	2.7	19.15



IRON MOUNTAIN CU-AU TARGET

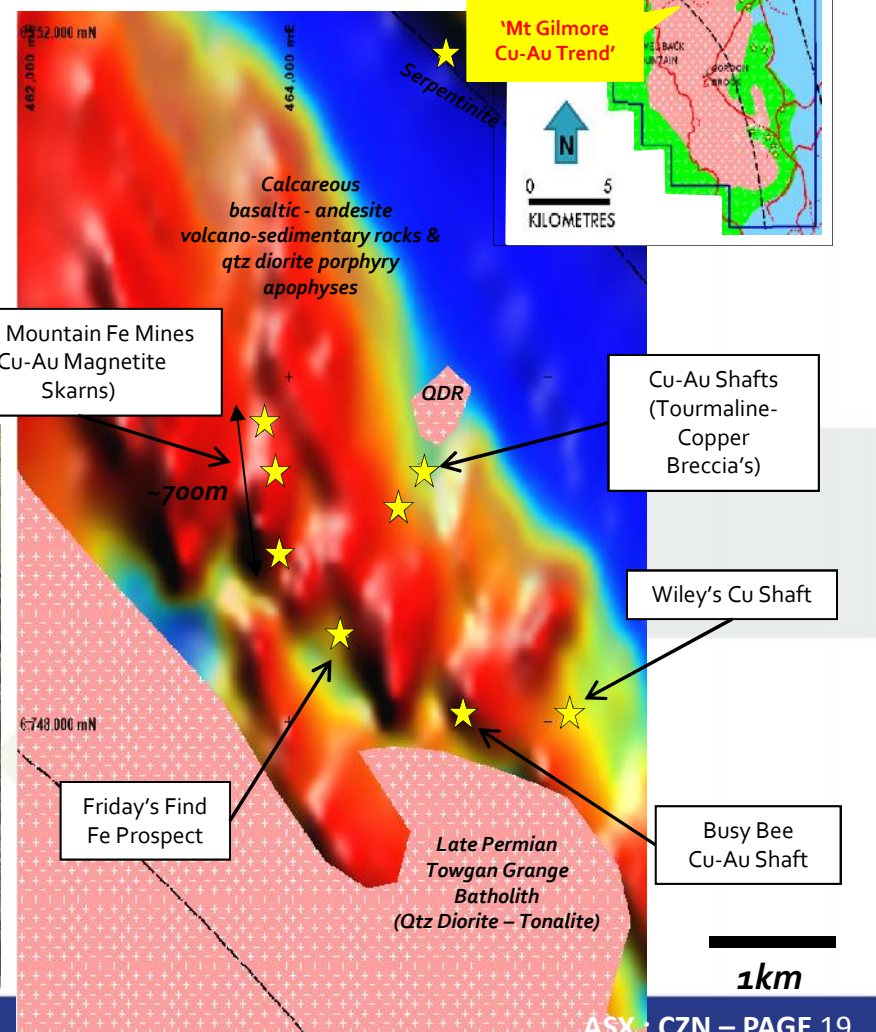
Large coincident geophysical and geochemical anomaly

- Historic iron ore (magnetite) mine, with >700m strike.
- Exposed pyrite & chalcopyrite is associated with the magnetite skarn in the southern quarry on a face 11m high by 25m long:
 - 11 grab samples averaged 0.64 g/t Au & 0.64% Cu, including up to 3.8 g/t Au & 2.08% Cu.
 - Channel sampling quarry face returned:
 - 8m @ 0.57% Cu & 0.12 g/t Au
Incl. 2m @ 1.52% Cu & 0.26 g/t Au.
- Target undrilled.

1986 Sampling
8m @ 0.57% Cu & 0.12g/t Au, Incl.
2m @ 1.52% Cu & 0.26g/t Au
Reference – Minsaco Resources
(DIGS GS1986_249)



Iron Mountain Cu-Au Target: Schematic Geology Plan

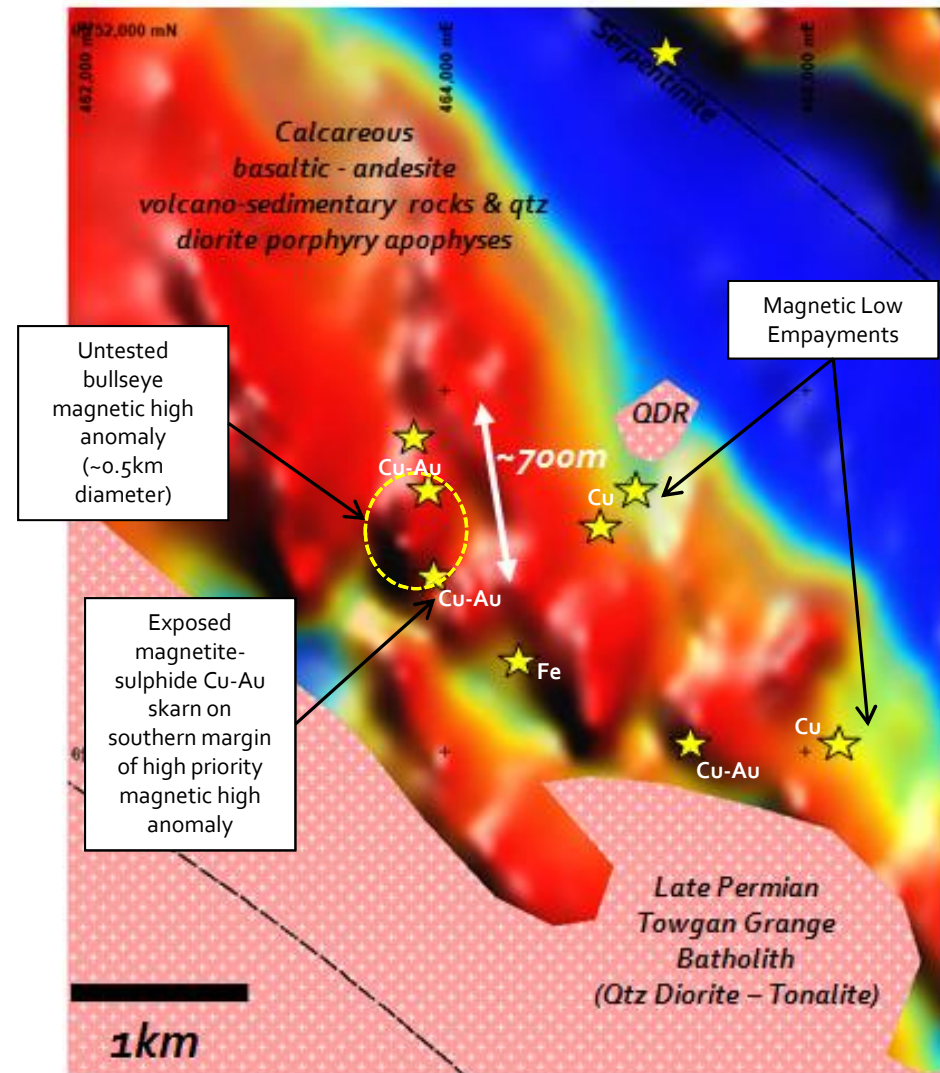


IRON MOUNTAIN CU-AU TARGET

Large coincident geophysical and geochemical anomaly

- High amplitude 'bullseye' and linear magnetic high anomalies occur across the target domain.
- Semi-coincident with magnetite-sulphide Cu-Au skarns and historic Cu-Au workings.
- These represent high priority reconnaissance targets given the magnetite association with Cu sulphides.
- Several magnetic low embayments are semi-coincident with Cu-Au workings with silica-tourmaline-malachite-chalcopyrite breccia on mullock dumps.
- A regional gravity high anomaly is also coincident with the Cu-Au skarns and magnetic high anomalies.

Tenterfield TMI Aeromagnetic Image



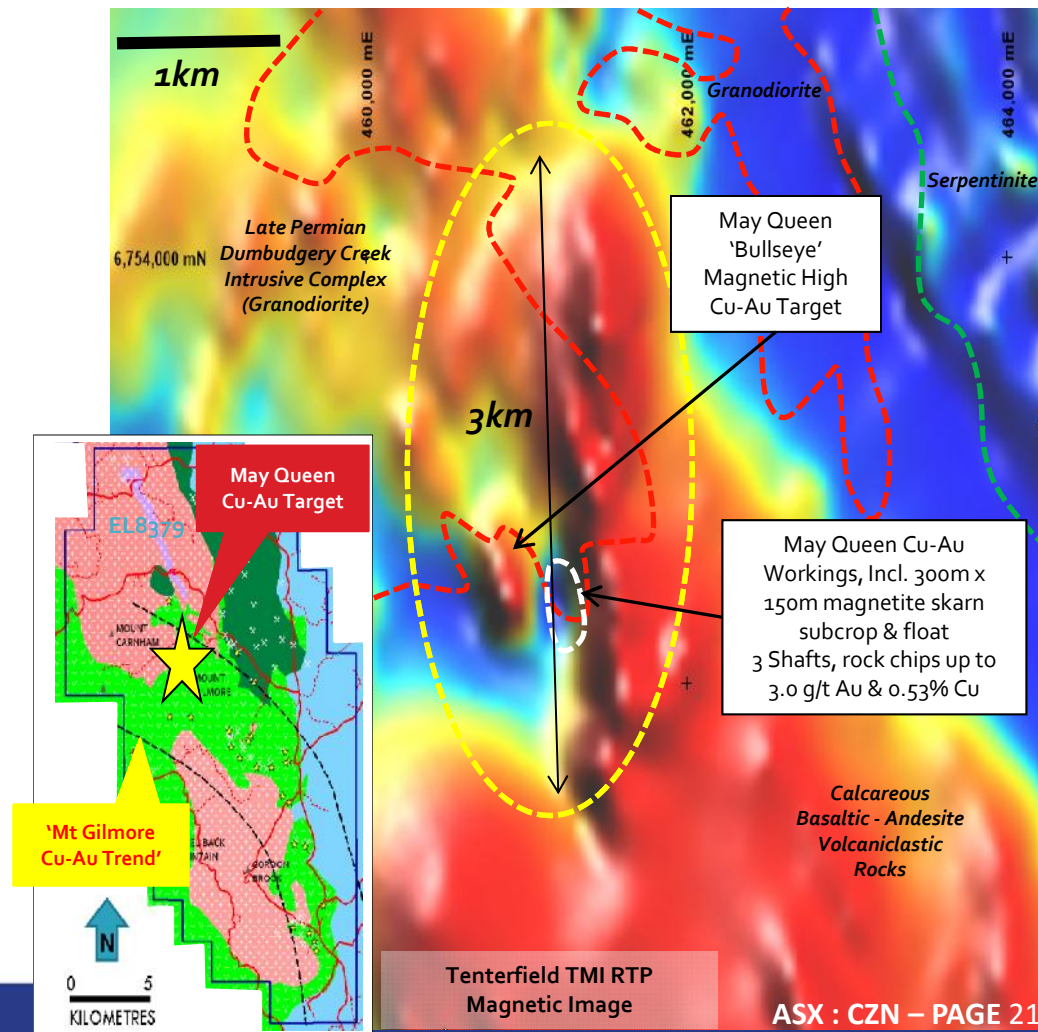
MAY QUEEN CU-AU TARGET

Large coincident geophysical and geochemical anomaly

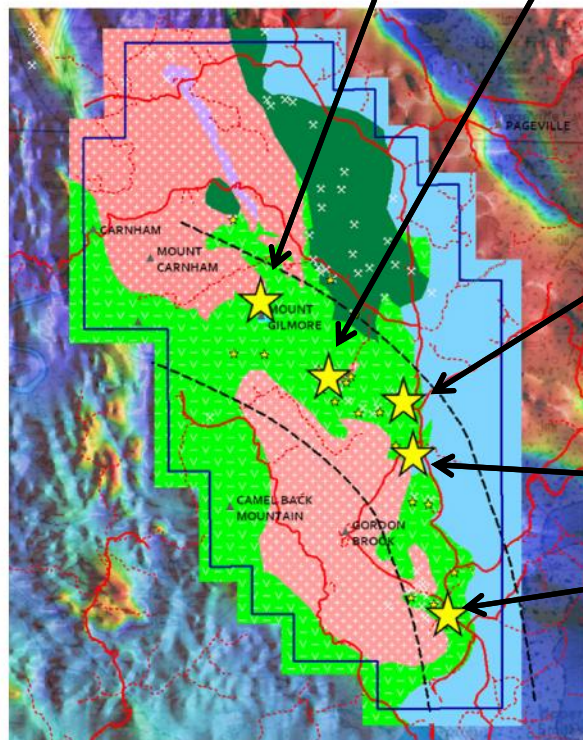
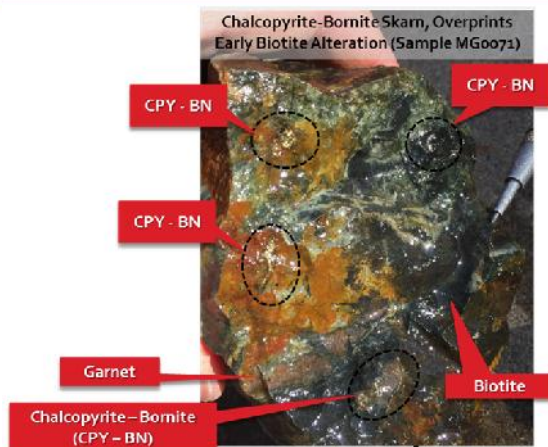
- Highly prospective for Cu-Au-Fe skarn and porphyry style Cu-Au deposits.
- Very limited previous exploration and undrilled.
- Historic Cu-Au-Fe workings including three shafts and an adit within a 300m x 150m 'topographic window' exposed in a valley.
- Rock chips up to **3.0g/t Au & 0.53% Cu**, associated with chalcopyrite - bornite - magnetite in extensive skarn style hydrothermal alteration assemblages (garnet-actinolite-epidote-carbonate-chlorite-magnetite-hematite-sericite-chalcopyrite-bornite).
- Cu-Au associated with high amplitude >3km long, linear and 0.6km x 0.4m bullseye magnetic high anomalies, rimmed by a regionally significant magnetic low anomaly – classic porphyry Cu-Au magnetic signature.



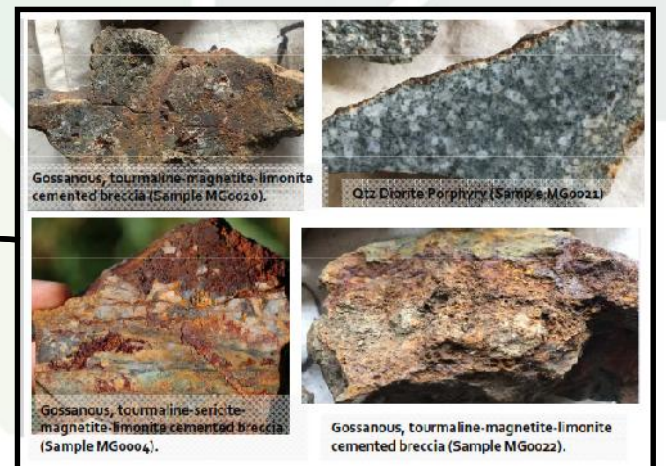
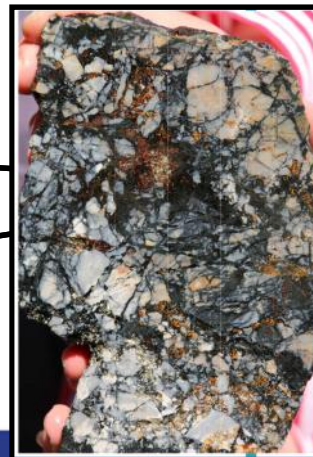
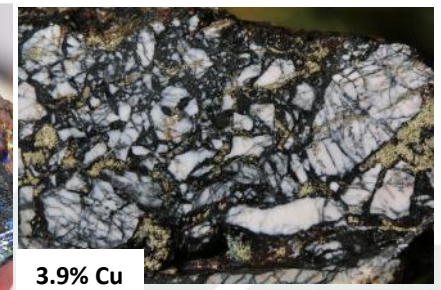
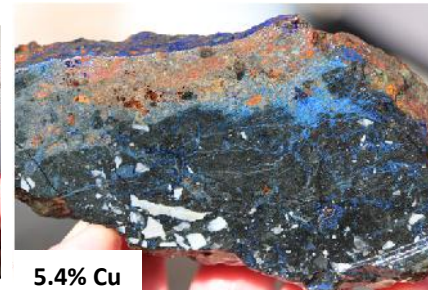
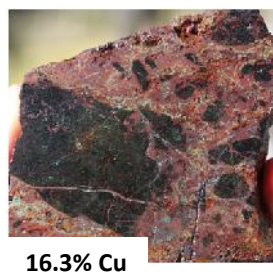
May Queen Cu-Au Target – Typical Landscape



EXTENSIVE ALTERATION + MINERALISATION



CORAZON
MINING LIMITED



PROJECT STRATEGY

Current Placement

- Tranche 2 expected to be completed by the end of July, 2016 (subject to Shareholder approval)

Due Diligence Process

- Completed by end of June, 2016

Proposed Exploration Activities – Cobalt Ridge

- Database generation
- Determination of required drilling & associated work for resource estimation
- Drill program approval process
- Resource definition drilling
- Extension of soil geochemical surveys
- Metallurgical studies

***Focussed on
determining size &
value of the Cobalt
Ridge deposit***

Proposed Exploration Activities – Regional Target Generation

- Compilation of exploration datasets
- Analysis of existing targets
- Identification of additional targets
- Determine exploration required to advance and rank targets

DISCLAIMER & IMPORTANT INFORMATION

Competent Person

The information in this report that relates to Exploration Results and Targets is based on information compiled by Mr Brett Smith, B.Sc Hons (Geol), Member AusIMM, Member AIG and an employee of Corazon Mining Limited. Mr Smith is an employee of Corazon Mining Limited and has sufficient experience that is relevant to the style of mineralisation, type of deposit under consideration and to the activity being undertaken, to qualify as a Competent Person as defined in the 2012 edition of the Australasian Code for Reporting of Exploration, Results, Mineral Resource and Ore Reserves (JORC Code 2012).

Contacts

Brett Smith

Managing Director
Corazon Mining Limited
P: +61 (8) 6142 6366

James Moses

Media and Investor Relations
P: +61 (0) 420 991 574
E: james@mandatecorporate.com.au

Corazon Mining Limited

T: +61 (8) 6142 6366
A: Level 1, 329 Hay Street, Subiaco WA 6008 | P: PO Box 8187, Subiaco WA 6008
E: info@corazon.com.au | W: www.corazon.com.au