



# SOVEREIGN GOLD COMPANY LIMITED

Sovereign Gold Company Limited  
ACN 145 184 667

Suite 7,  
234 Churchill Avenue,  
Subiaco, WA, 6008, Australia

Phone: +61 8 6500 6872

## Contact

Rocco Tassone, Managing Director  
Phone: +61 8 6500 6872

e: [corporate@sovereigngold.com.au](mailto:corporate@sovereigngold.com.au)

## Contact

Rocco Tassone, Managing Director

[www.sovereigngold.com.au](http://www.sovereigngold.com.au)  
e: [corporate@sovereigngold.com.au](mailto:corporate@sovereigngold.com.au)

## Directors / Officers

Charles Thomas (Chairman)  
[www.sovereigngold.com.au](http://www.sovereigngold.com.au)  
Rocco Tassone (MD)  
Patrick Glovac

## Directors / Officers

Charles Thomas (Chairman)  
Rocco Tassone (MD)  
Patrick Glovac

## ASX: SOC

### Qualifying Statements

The information in this Report that relates

### Qualifying Statements

The information in this Report that relates to Exploration Information is based on information compiled by Paul Degeling who is a fellow of The Australasian Institute of Mining and Metallurgy.

Mr Degeling is a qualified geologist and is a contractor to Sovereign Gold Company Limited.

Mr Degeling has sufficient experience, which is relevant to the style of mineralisation and type of deposit under consideration and to the activity, which he is undertaking to qualify as a Competent Person as defined in the 2012 Edition of the Australasian Code for Reporting of Exploration Results, Mineral Resources and Ore Reserves. Mr Degeling consents to the

## Halls Peak Drilling to target High Grade DSO Zinc and Silver

- NSW Government Division of Resources and Energy (DRE) has accepted approval request to conduct drilling activities on Halls Peak – Gibson Project (EL4474)
- Over 1,000m Diamond drilling has been finalised and will target potential Direct Shipping Ore (DSO) High Grade Zinc and Silver
- Negotiations with drilling contractors are expected to be finalised shortly and diamond drill rig should be mobilised in the coming weeks
- Previous results including 1 metre from 37.3 metres @ 32.8% zinc, 6.7% lead, 2.5% copper and 48.2 g/t silver and 1.3 metres from 41.2 metres @ 34.5% zinc, 11.3% lead, 2% copper and 69.4 g/t silver (DDH HP 026)

Sovereign Gold Company Limited (ASX: SOC) (**Sovereign** or the **Company**) advises the NSW Government Division of Resources and Energy (DRE) has sought approval for the Company to commence drilling at Halls Peak – Gibson Project. The DRE has accepted the request and approval should be received within 10 business days.

Weather permitting, drilling should be mobilised in the coming few weeks.

Sovereign Gold's initial drill program is planned for more than 1,000 metres of diamond core and if results are positive the program will be expanded.

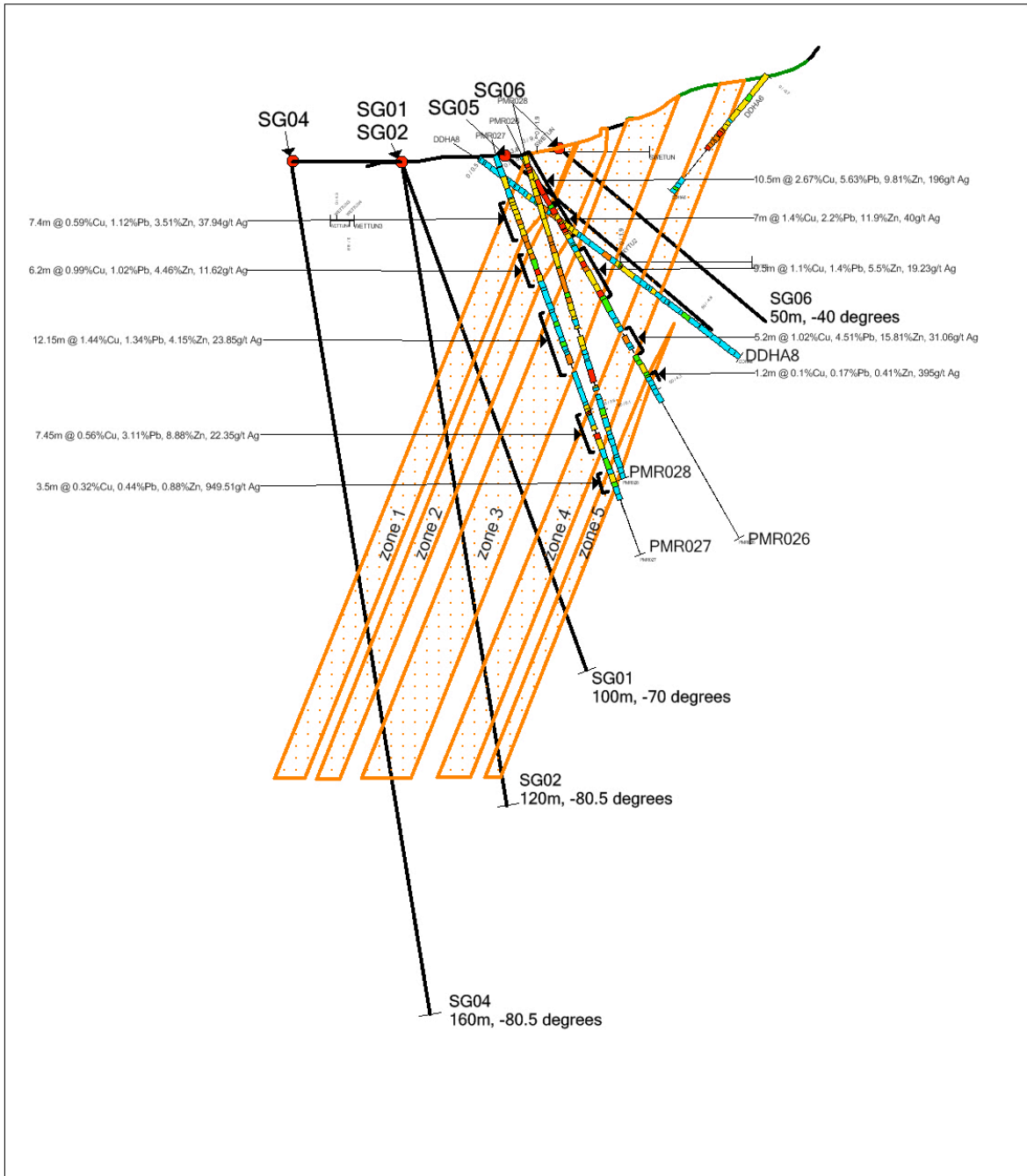
Previous drilling has delivered significant results (see p2).

### About Halls Peak

- Right geological setting, Halls Peak base metal province located in an area (4 x 5km) of historic high grade massive sulphide mines
- Several shallow, small high grade massive sulphide bodies already discovered
- Halls Peak has potential to host a large base metal deposit
- Flat lying VTEM conductor around the old Sunnyside Mine fits a typical SEDEX deposit model. Consultant Geophysicists interpret this conductor to host sulphides
- Confidence exists that the VTEM survey has potentially located sulphide deposition but economic grades and tonnage yet to be proven
- Long term Zinc outlook positive, declining production levels and the lack of genuine development opportunities

Halls Peak is the inferred volcanic centre for extensive small but high grade Volcanic Massive Sulphide (VMS) deposits rich in copper, lead, zinc and silver. Current exploration aims to locate the right depositional environment to host a large scale, high-grade base metal deposit. Several geochemical and geophysical anomalies are also present that identify further high grade, near-surface sulphides.

Additional to the VMS prospectivity, there are indications for the presence of orogenic gold from breccia floaters and small pods of Au-rich quartz.



ID	HoleID	Easting	Northing	RL	Azimuth	Dip
0	SG01	407,656.13	6,597,979.47	783.6	177	70
0	SG02	407,656.1	6,597,980.51	783.5	177	80.5
0	SG04	407,655	6,598,000	780.7	177	80.5
0	SG03	407,510	6,598,049	730	210	60
0	SG05	407,648	6,597,960	785	177	40
0	SG06	407,648	6,597,950	784	177	40
0	SG07	407,626	6,597,990	766	180	70

**Legends**  
**Assays Zn (%)**

- 0 - 0.5
- 0.5 - 1
- 1 - 5
- 5 - 10
- 10 - 20

*Sovereign Gold Company Limited*

Date: 14/10/2016	EL4474 HALLS PEAK Gibsons Mine Project
Author: Paul Deegan	
Office:	Proposed Drilling
Drawn:	
Scale: 1:100	Projection: New-Castellum

0 10 20 40  
metres



### Previous Diamond Drill Highlights

#### DDH HP 026

- 37.2 metres at an average grade of 8.7% zinc, 3.0% lead, 1.4% copper and 85 g/t (2.8 oz/t) silver, over 4 bands
  - Including 10.5 metres at an average grade of 9.81% zinc, 5.63% lead, 2.67% copper and 196 g/t (6.3 oz/t) silver
    - Including 1.48 metres (from 1.62 to 3.1m) at an average grade of 19.2% zinc, 10.7% lead, 5.66% copper and 509 g/t (6.3 oz/t) silver
  - Including 1 metre from 37.3 metres @ 32.8% zinc, 6.7% lead, 2.5% copper and 48.2 g/t silver
  - Including 1.3 metres from 41.2 metres @ 34.5% zinc, 11.3% lead, 2% copper and 69.4 g/t silver

#### DDH HP 027

- 3.5 metres (from 39.00 – 42.50m downhole) at 5.0% Zn, 2.2% Pb, 2.4% Cu, 73.4g/t Ag
- 7.45 metres (from 50.20 – 57.65m downhole) at 8.88% Zn, 3.11% Pb, 0.56% Cu, 22.35g/t Ag
  - Including 1.9 metres (from 53.80 – 55.70 downhole) at 27.1% Zn, 8.7% Pb, 1.5% Cu, 59.0g/t Ag

#### DDH HP 028

- 9.4 metres (from 0.00 – 9.40m downhole) at 5.0% Zn, 2.2% Pb, 2.4% Cu, 73.4g/t Ag
  - Including 1.8 metres (from 1.60 – 3.40m downhole) at 12.76% Zn, 7.06% Pb, 7.13% Cu, 224.3g/t Ag, 0.9 g/t Au
- 3.3 metres (from 15.7 – 19.0m downhole) at 7.6% Zn, 3.0% Pb, 0.8% Cu, 29.5g/t Ag
- 1.5 metres (from 33.9 – 35.4m downhole) at 28% Zn, 9.6% Pb, 2.6% Cu, 62.9g/t Ag
- 3.2 metres (from 42.0 – 45.2 m downhole) at 19.7% Zn, 6.7% Pb, 1.57% Cu, 40.4g/t Ag

#### DDH HP 029

- 1.8 metres (from 8.60 – 10.40m downhole) at 19.98% Zn, 10.69% Pb, 0.9% Cu, 41.4g/t Ag
- 0.4 metres (from 30.40 – 30.80m downhole) at 2.18% Cu
- 0.2 metres (from 31.90 – 32.10m downhole) at 3.33% Cu

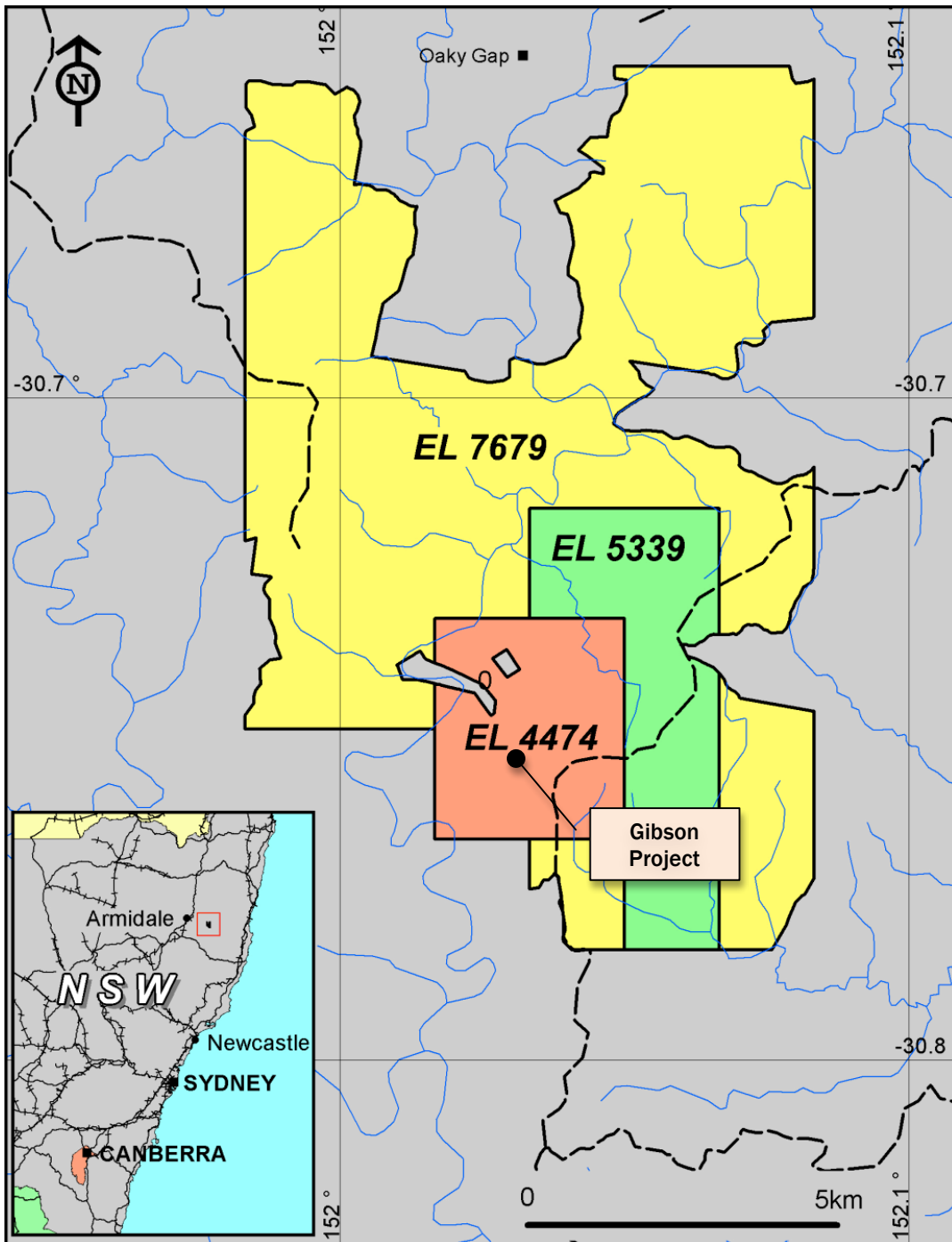
#### DDH HP 030

- 0.4 metres (from 40.60 – 40.80m downhole) at 6.47% Cu, 0.22% Zn, 30.3g/t Ag
- 0.25 metres (from 84.35 – 84.10m downhole) at 3.19% Cu, 0.25% Zn

**For further information please contact:**

**Rocco Tassone,  
Managing Director  
Sovereign Gold Company Limited**

**Telephone: +61 8 6500 6872**



The Halls Peak Tenements are located 80km SE of Armidale N.S.W.