



MACPHERSONS

DIGGERS AND DEALERS – AUGUST 2016

KALGOORLIE SILVER AND GOLD PROJECTS

The information contained in this presentation has been prepared by MacPhersons Resources Ltd (MRP). This presentation is not an offer, invitation, solicitation or other recommendation with respect to the subscription for, purchase or sale of any securities in MRP. This presentation has been made available for information purposes only and does not constitute a prospectus, short form prospectus, profile statement or offer information statement. This presentation is not subject to the disclosure requirements affecting disclosure documents under Chapter 6D of the Corporations Act.

While the information contained in this presentation has been prepared in good faith, neither MRP nor any of its directors, officers, employees, agents or advisors give any representation or warranty, express or implied, as to the fairness, accuracy, completeness or correctness of the information, opinions and conclusions contained in this presentation. Accordingly, to the maximum extent permitted by law, none of MRP, its directors, officers, employees, agents, advisers, nor any other person accepts any liability whether direct or indirect, express or limited, contractual, tortious, statutory or otherwise, in respect of the accuracy or completeness of the information or for any of the opinions contained in this presentation or for any errors, omissions or misstatements or for any loss, howsoever arising, from the use of this presentation.

Forward looking Statements

This presentation may contain statements that may be deemed 'forward looking statements'. Forward risks, uncertainties and other factors, many of which are outside the control of MRP, can cause actual results to differ materially from such statements. Such risks and uncertainties include, but are not limited to, commodity price volatility, increased production costs and variances in ore grade recovery rates from those assumed in mining plans, as well as political and operational risks and governmental regulation and judicial outcomes. MRP makes no undertaking to update or revise such statements, but has made every endeavour to ensure that they are fair and reasonable at the time of making the presentation.

Investors are cautioned that any forward looking statements are not guarantees of future performance and that actual results or developments may differ materially from those projected in any forward looking statements made.

Exploration targets are conceptual in nature and drilling may not convert these to resources.

BECOMING A GOLD PRODUCER



- ▶ Boorara Trial gold mine to start in next two months
- ▶ Nimbus silver deposit averaging 25 oz/t now in midst of metallurgical testing?
- ▶ The Nimbus silver and Boorara gold projects
- high grade at depth?



CORPORATE OVERVIEW



MACPHERSONS

ASX Code: MRP
ASX Listed: December 2010
Ordinary Shares: 317 million
Options: Nil
Market Cap: A\$35m (at 11 cents)
Cash: A\$3.475m (30 June 2016)
Debt: Nil

SUBSTANTIAL SHAREHOLDERS

- ▶ Directors/Management: 15%
- ▶ Orion Mine Finance: 19.9%
- ▶ Top 40 shareholders: 72.7%



BOARD OF DIRECTORS & MANAGEMENT

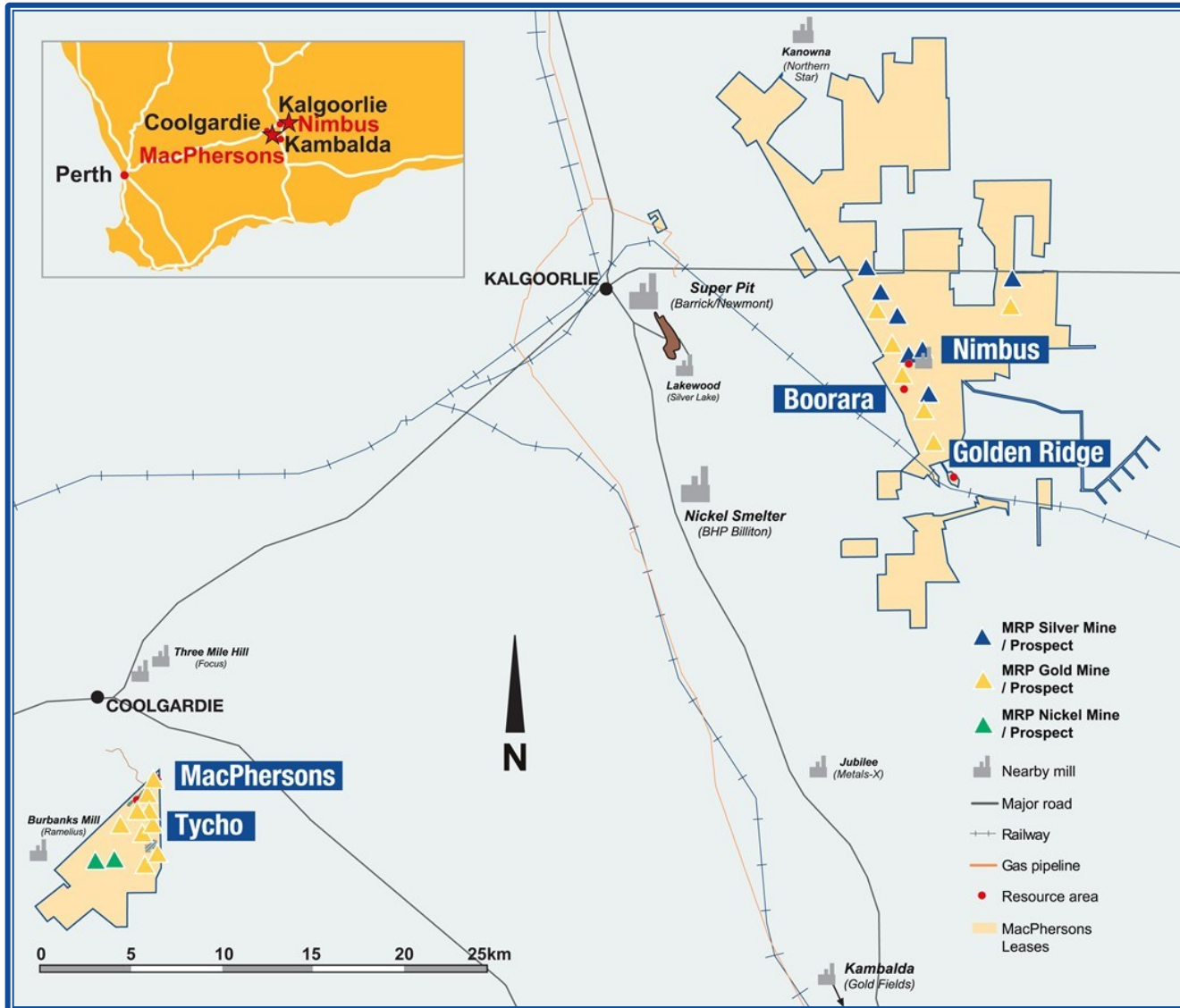
Ashok Parekh, Non Exec Chairman
Accounting & Mining Company Management

Jeff Williams, Managing Director
Engineering, Mine Planning, Development & Operation

Peter Rozenauers, Non Exec Director
Mining Engineering, Processing & Operational Management

Stephen Hewitt-Dutton, Company Secretary
Accounting, Mergers & Acquisitions, Compliance

PRIME LOCATION, EXTENSIVE INFRASTRUCTURE

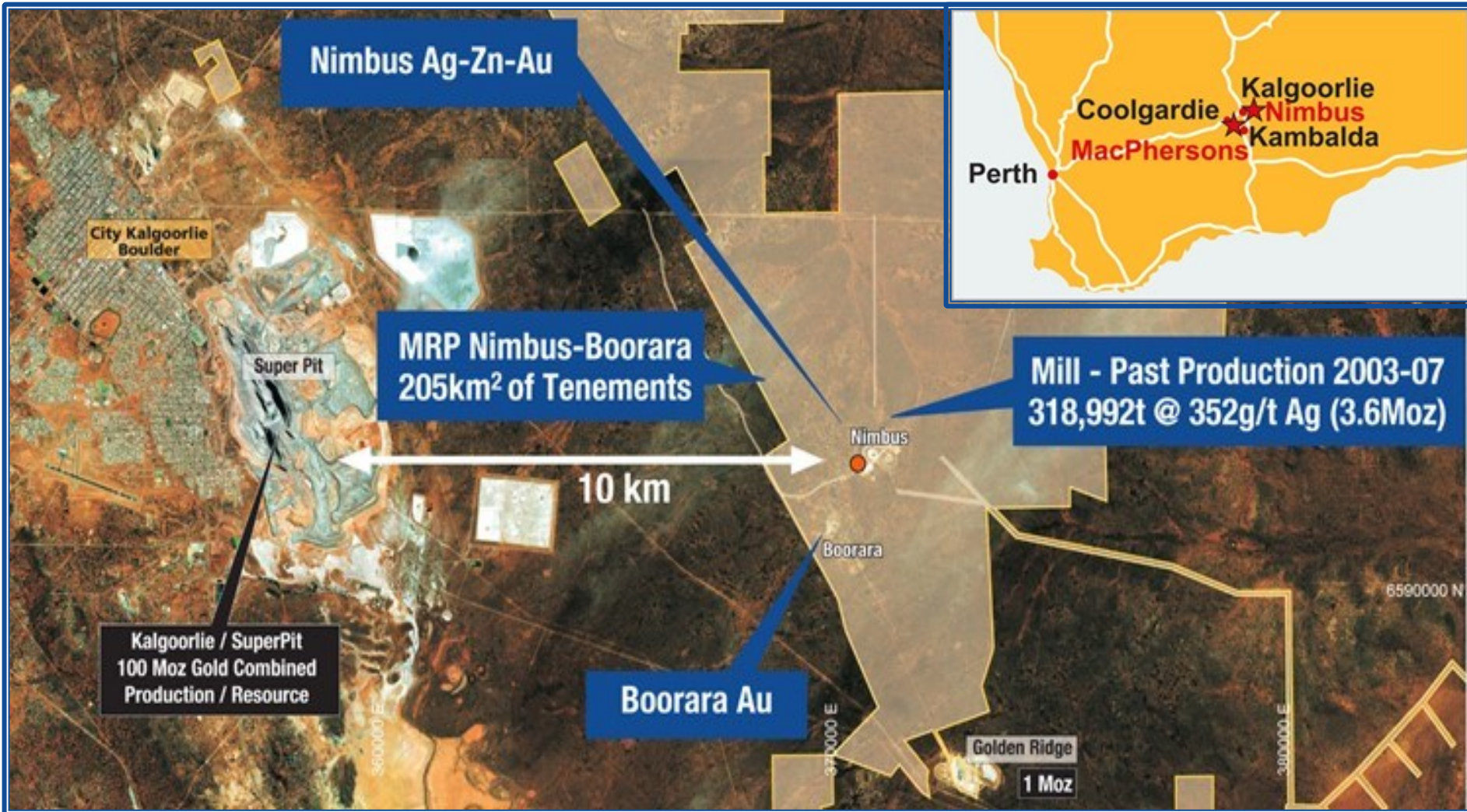


- ▶ Strategic
- ▶ Infrastructure: gas, power, rail, water
- ▶ Mining engineering services and workforce
- ▶ Kanowna – Boorara shear zone

PRIME LOCATION, RECOGNISED PRODUCTION AREA



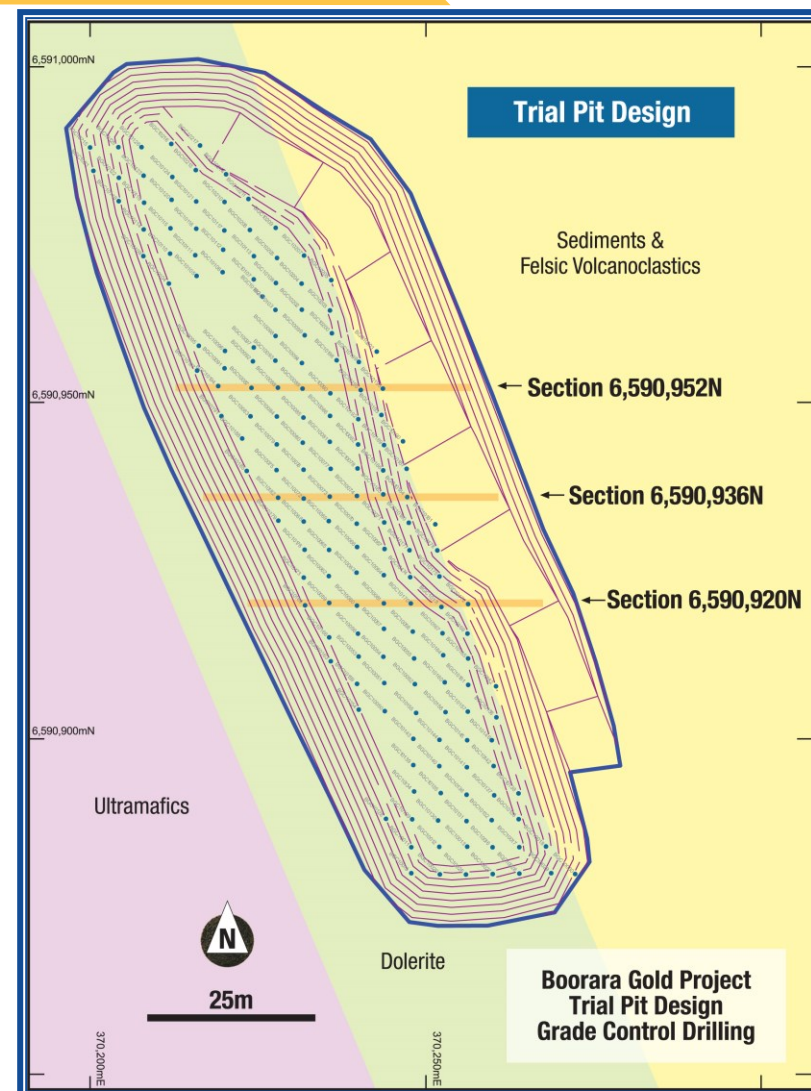
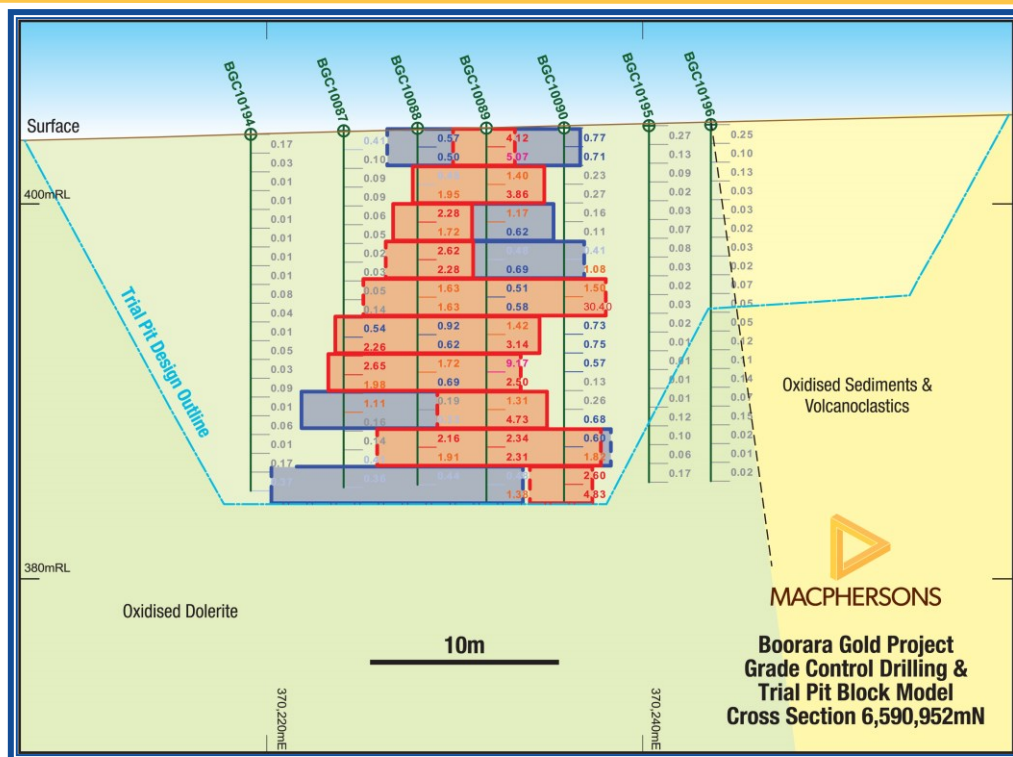
MACPHERSONS



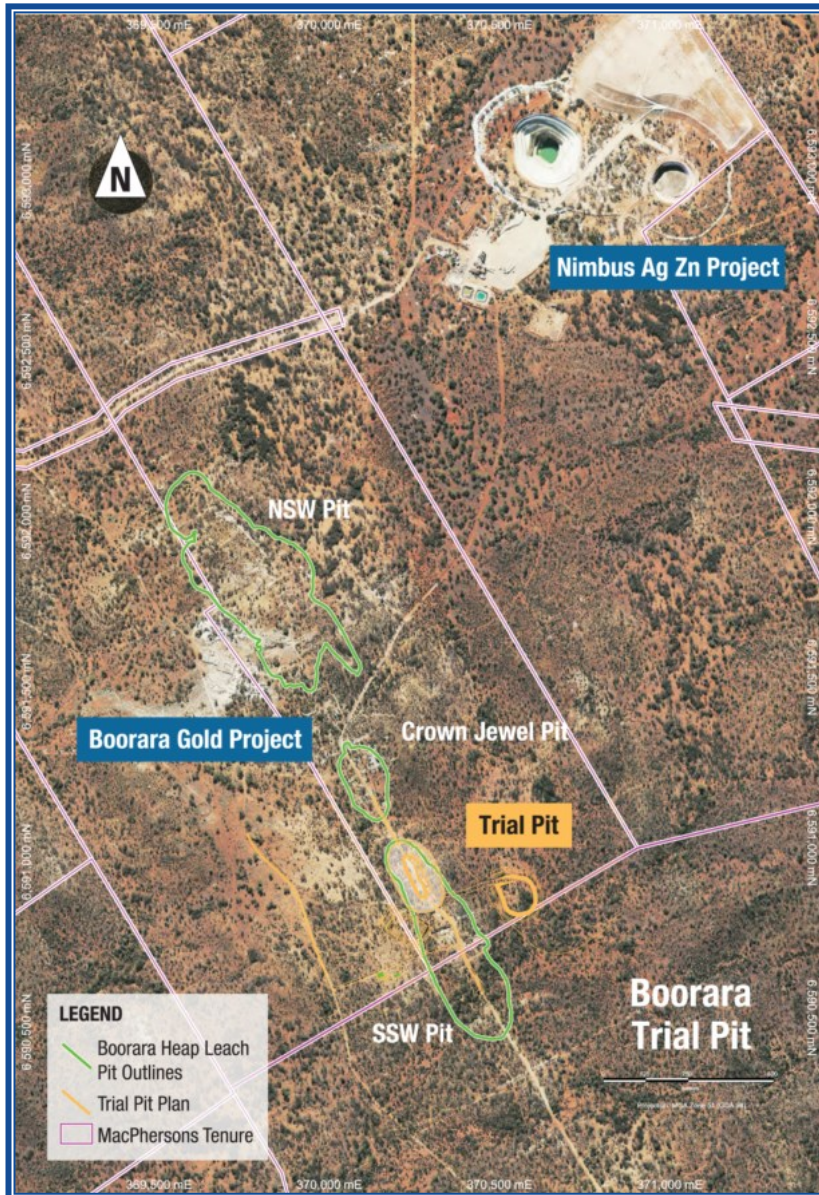
WHERE ARE WE NOW?



MACPHERSONS



- ▶ Trial gold open pit – plus 20,000 tonnes for 1,000 oz
- ▶ Feasibility Study for Boorara Stage One December Quarter
- ▶ Nimbus metallurgical testing – DFS on 25 oz/t Ag



Boorara Trial Pit Grade Control results:

- ▶ 16m @ 2.77g/t from 2m
- ▶ 17m @ 2.05 g/t from surface
- ▶ 20m @ 1.89 g/t from surface

RC GRADE CONTROL DRILLING- BOORARA SOUTHERN PIT



HEAP LEACH PIT DESIGN

Coloured Pit Designs – Mineral Resource
Design for Heap Leach Model
3.5Mt @ 1.01 g/t Au

Northern Stockwork
Pit Design

Crown Jewell
Pit Design

Trial Pit

Long Section View:



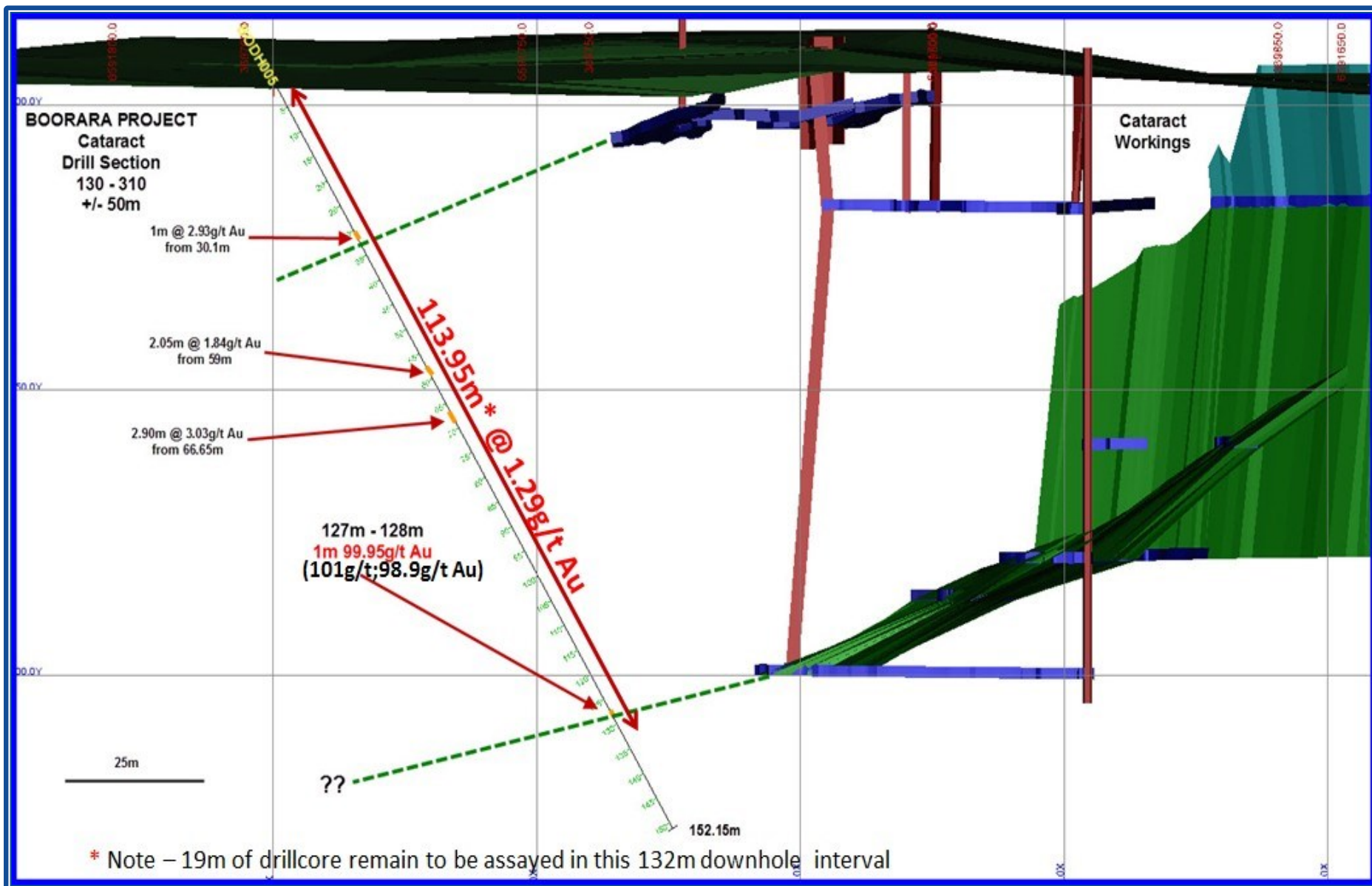
75m

Southern Stockwork
Pit Design

HIGH GRADE MINERALISATION AT BOORARA



MACPHERSONS



RENEWED FOCUS ON HIGH GRADE SILVER



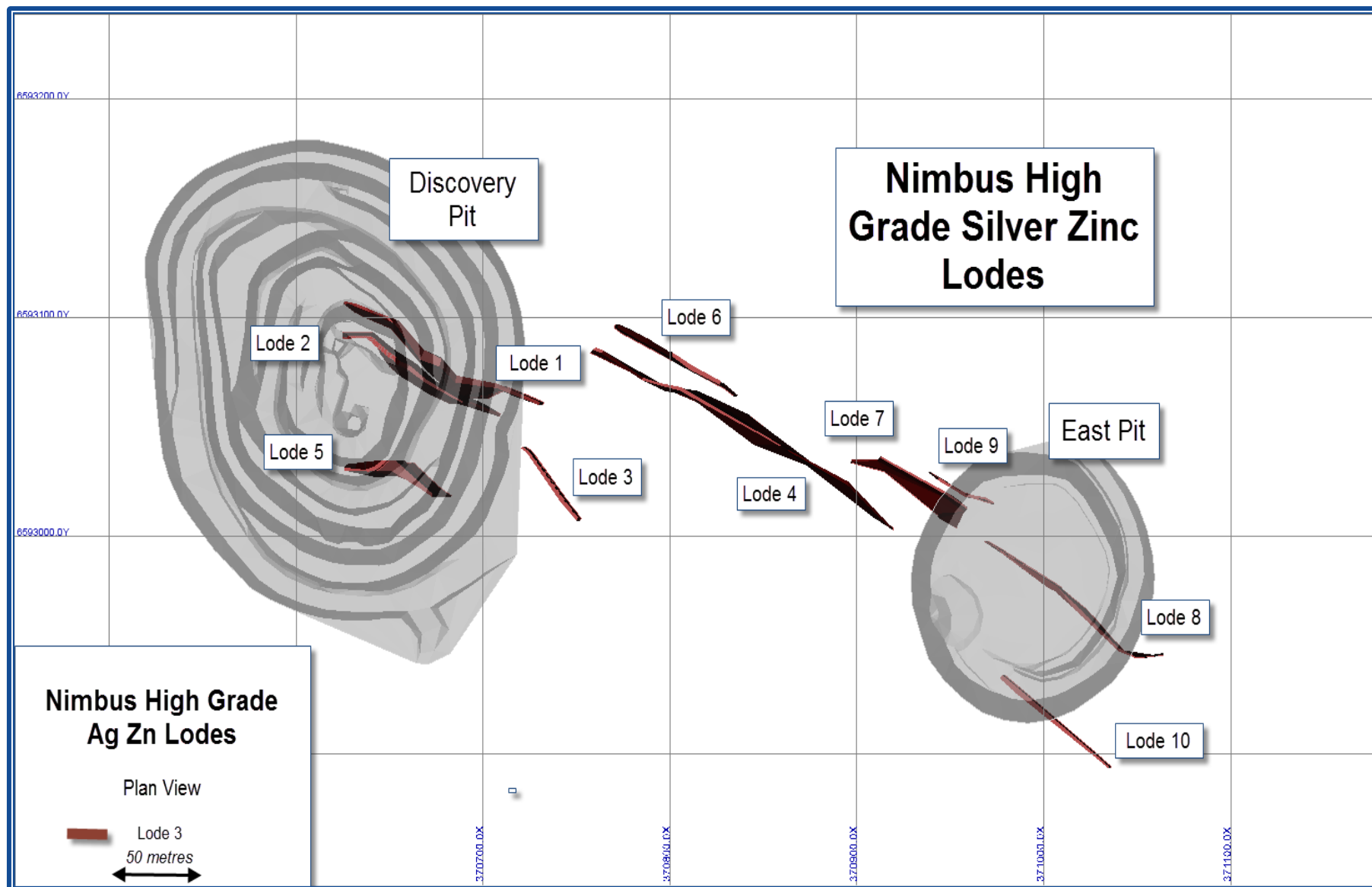
MACPHERSONS



IDENTIFIED HIGH GRADE LODS



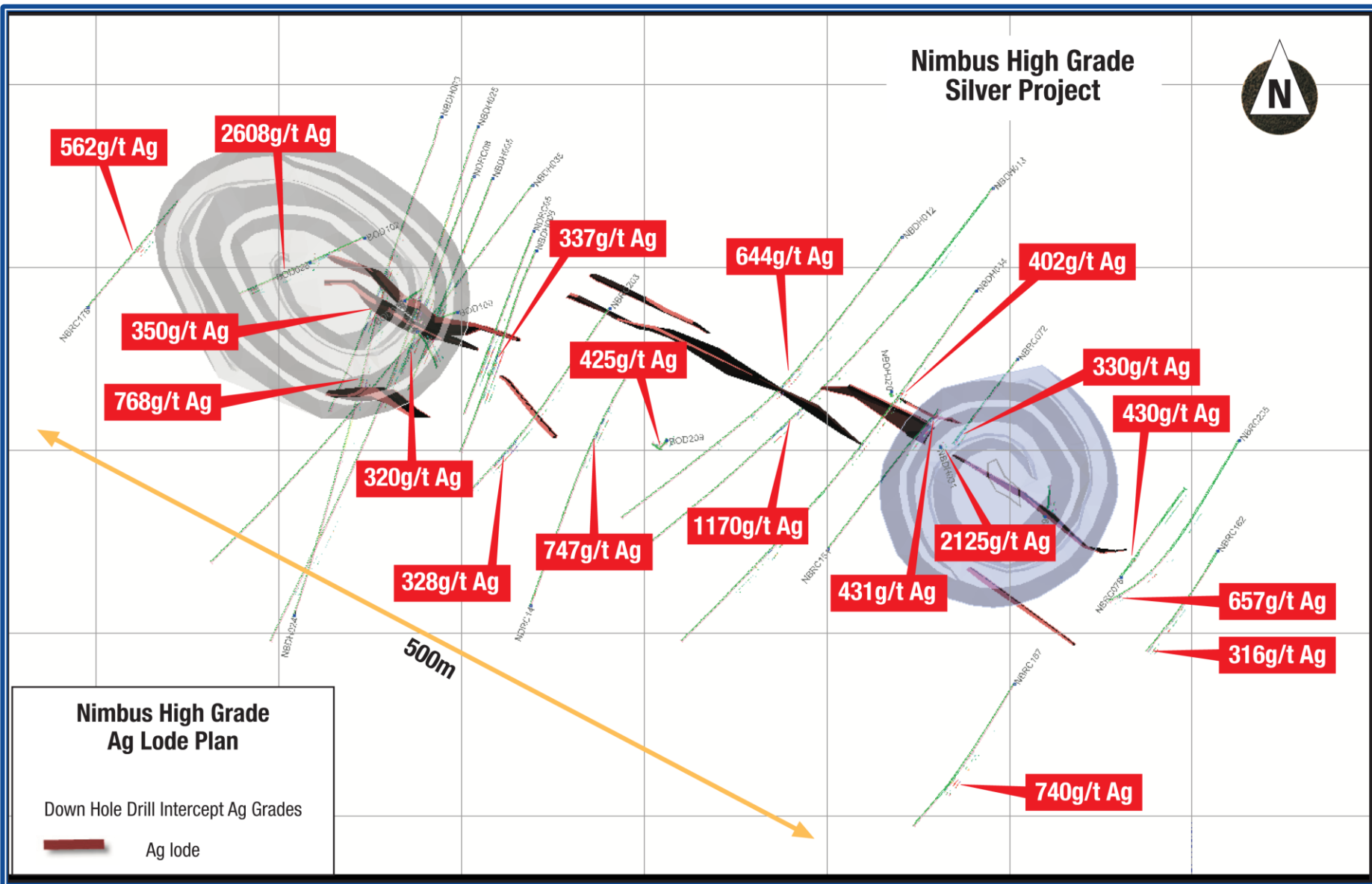
MACPHERSONS



UPSIDE – HIGH GRADE DRILLHOLES OUTSIDE LODES



MACPHERSONS



UPSIDE – HIGH SILVER GRADE HITS

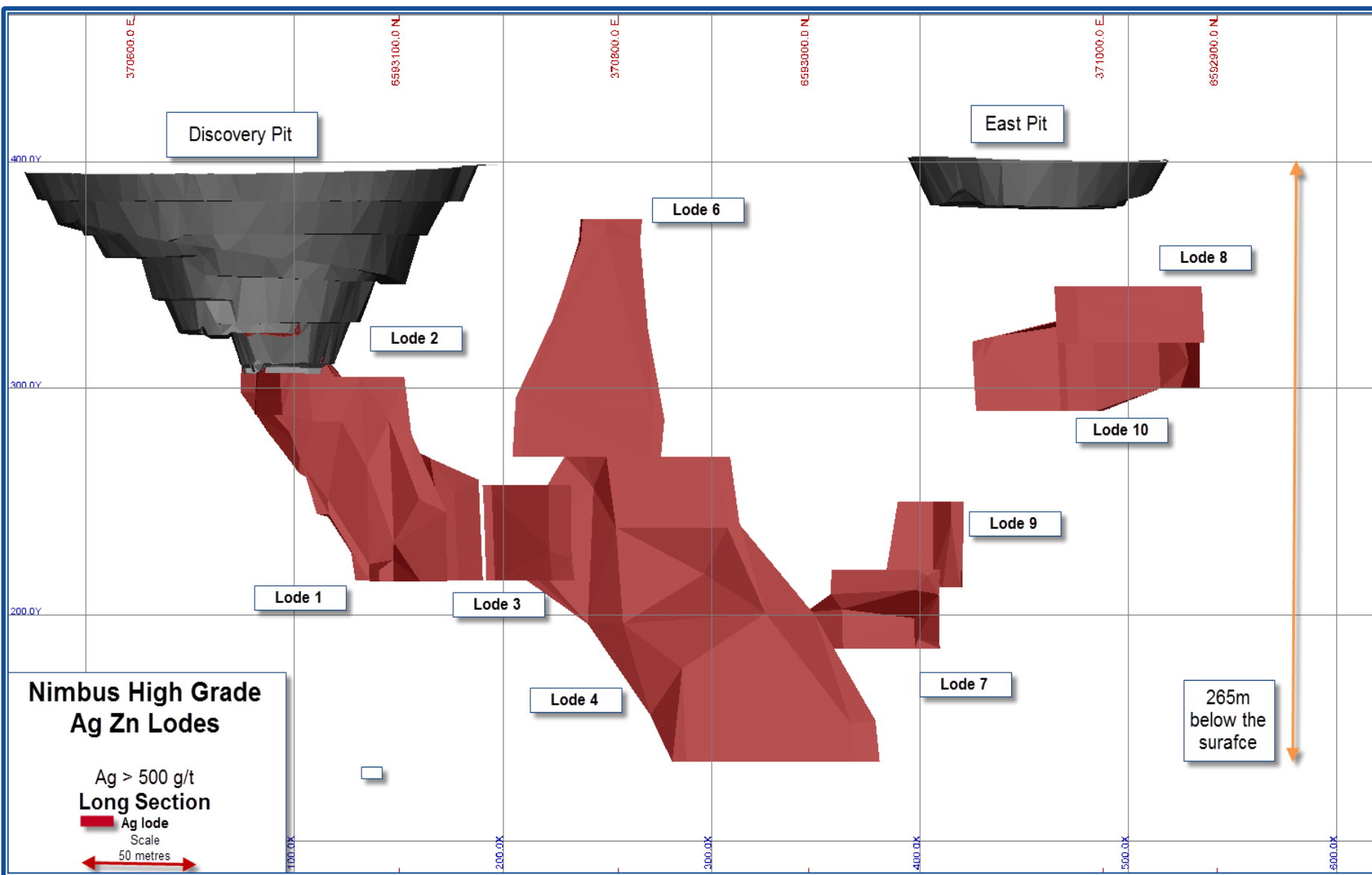


Down Hole Interval (m)	Ag g/t (gold equ.)
3	2609 (39)
1	1935 (29)
3	797 (12)
13	642 (9.5)
6	335 (5)
6	693 (10)
2	590 (9)
4	425 (6)

NIMBUS SILVER PROJECT – PLUS 500M DEEP



MACPHERSONS



VERTICAL LODES REDUCES MINING RISK



MACPHERSONS

Nimbus High Grade Silver Zinc Lodes

Discovery Pit

East Pit

Lode 2

Lode 10

Lode 6

Lode 8

Lode 5

Lode 1

Lode 9

Lode 3

Lode 7

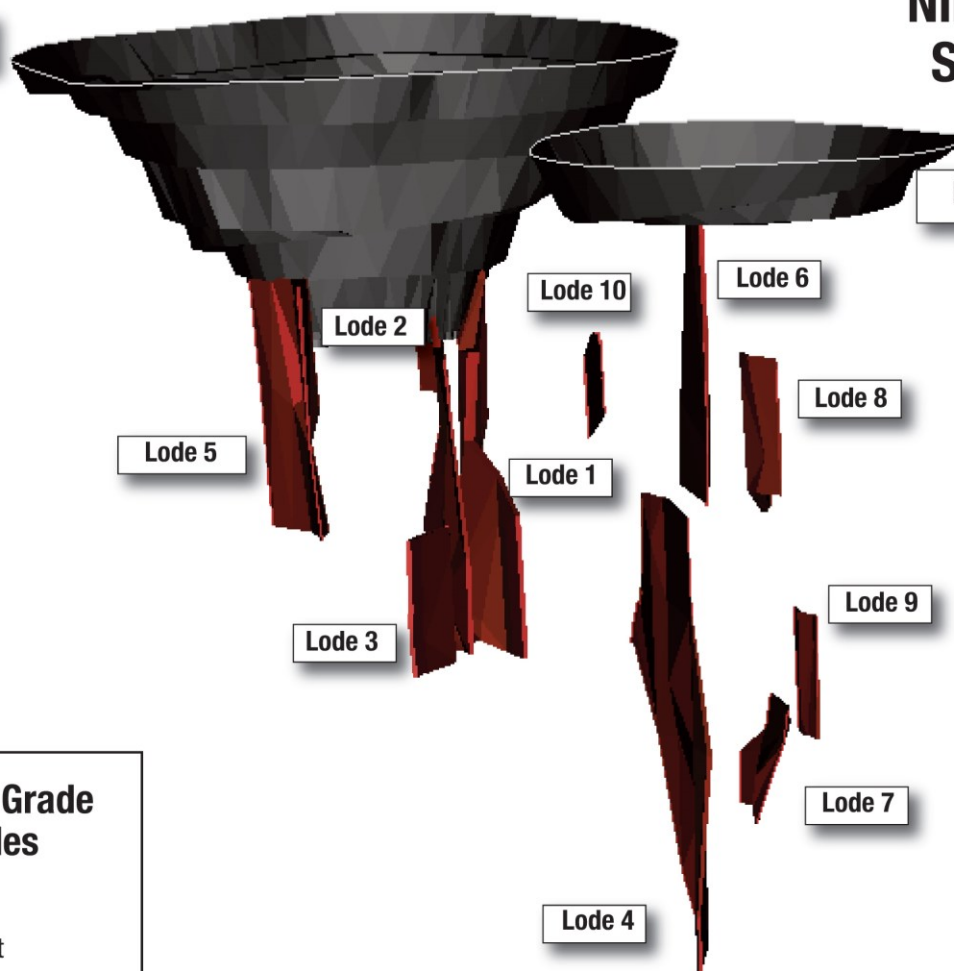
Lode 4

265m

Nimbus High Grade Ag Zn Lodes

3D View
Ag > 500g/t

Ag lode



TAKE ADVANTAGE OF HIGHER GOLD AND SILVER PRICE



- ▶ A new gold producer
- ▶ Nimbus-Averaging 773 g/t Ag (25 oz/t)
- ▶ Nimbus - Other high grade lodes identified
- ▶ ASX Code: MRP



SMALL COMPETENT TEAM



END OF PRESENTATION



THANK YOU

Jeff Williams
Managing Director
MacPhersons Resources

UPSIDE – HIGH SILVER GRADE HITS



Hole Id	From (m)	To (m)	Down Hole Interval (m)	Ag grade ppm	Mid Point GDA E (m)	Mid Point GDA N (m)	Mid Point RL (m)
BOD028	77	80	3	2609	370618.74	6593103.04	317.63
BOD028	83	84	1	1935	370618.87	6593103.03	312.90
BOD028	132	135	3	797	370619.50	6593103.01	262.78
BOD036	116	129	13	642	370675.15	6593085.55	274.64
BOD044	177	183	6	335	370685.19	6593050.79	218.36
BOD100	155	161	6	693	370688.52	6593071.81	239.79
BOD102	148	150	2	590	370585.87	6593088.55	263.28
BOD209	245	249	4	425	370806.84	6593002.68	153.53
NBDH003	187	189	2	350	370652.78	6593080.70	241.33
NBDH005	206.3	208.6	2.3	320	370680.42	6593055.31	214.74
NBDH006	176.6	178.6	2	338	370718.33	6593047.28	232.15
NBDH012	260.7	261.2	0.5	644	370860.38	6593020.11	169.49
NBDH013	334.3	334.6	0.3	1170	370883.92	6593020.00	106.14
NBDH020	180.6	181.3	1.4	970	370935.61	6593030.37	220.04
NBDH020	186.2	187.7	1.5	1553	370935.62	6593030.33	214.25
NBDH024	173	175	2	768	370645.33	6593036.85	286.40
NBDH025	241.4	243.4	2	344	370656.12	6593025.15	213.89
NBDH029	12	18	6	720	371019.30	6592963.62	363.86
NBDH031	181.6	183.5	1.9	2146	370962.82	6593002.01	198.37
NBDH034	136	139.8	3.8	394	370941.29	6593031.62	279.64
NBDH035	177.32	179	2.68	346	370684.93	6593074.31	241.93
NBRC072	115	117	2	330	370970.67	6593005.01	298.39
NBRC078	15	17	2	430	371065.95	6592937.20	386.73
NBRC151	214	216	2	431	370960.07	6593020.15	209.81
NBRC162	133	136	3	316	371077.30	6592892.34	282.56
NBRC167	130	132	2	491	370967.66	6592818.19	286.83
NBRC178	86	88	2	563	370524.00	6593111.35	320.99
NBRC203	177	186	9	328	370727.48	6593002.24	243.06
NBRC235	202	204	2	658	371060.70	6592920.60	227.46
NDRC08	176	183	7	713	370677.63	6593070.15	237.79
NDRC14	207	209	2	747	370773.91	6593008.41	218.58
NDRC05	182	186	4	323	370714.35	6593052.89	227.46

Competent Person Statement



The information in this presentation that relates to ore reserves, mineral resources and exploration results is based on information compiled by Mr Jeff Williams, who is a Fellow of the Australasian Institute of Mining and Metallurgy. Mr Williams is an employee of MacPhersons Resources Ltd and has sufficient experience which is relevant to the style of mineralisation and type of deposit under consideration, and to the activity which he is undertaking, to qualify as a Competent Person as defined in the 2012 edition of the “Australasian Code for Reporting of Exploration Results, Mineral Resources and Ore Reserves”. Mr Williams has given his consent to the inclusion in this presentation of the matters based on the information in the form and context in which it appears.