

# SILVER CITY MINERALS LIMITED

ABN 68 130 933 309

ASX Code: SCI

## Silver City Minerals

*Sydney Resources Round-up  
May 2016*

# Important Disclaimer

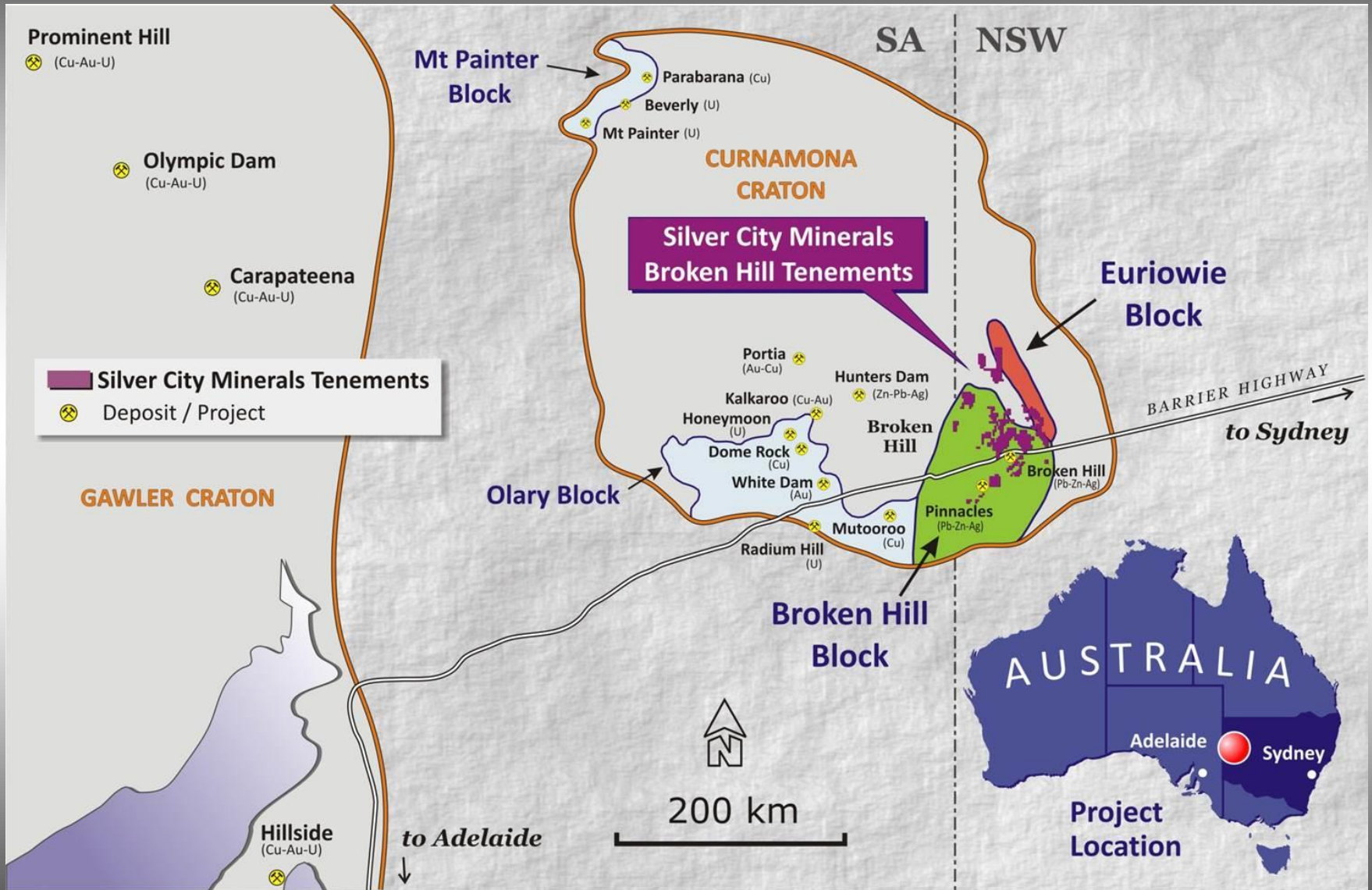
This material contains certain forecasts and forward-looking information, including information about possible or assumed future performance, exploration results, resources or potential growth of Silver City Minerals Limited (SCI), industry growth or other trend projections. Such forecasts and information are not a guarantee of future performance and involve unknown risks and uncertainties, as well as other factors, many of which are beyond the control of Silver City Minerals Limited. Actual results and developments may differ materially from those expressed or implied by these forward-looking statements, depending on a variety of factors. Nothing in this material should be construed as the solicitation of an offer to buy or sell SCI securities.

## Competent Person

Information in this document that relates to Exploration Results, Mineral Resources or Ore Reserves is based on information compiled by Christopher Torrey, who is the Managing Director and full-time employee and shareholder of Silver City Minerals Limited, and a Member of the Australian Institute of Geoscientists. Mr Torrey has sufficient experience which is relevant to the style of mineralisation and type of deposit under consideration and to the activity which he is undertaking to qualify as a Competent Person as defined in the 2012 Edition of the “Australasian Code for Reporting of Exploration Results, Mineral Resources and Ore Reserves”. Mr Torrey consents to the inclusion in the report of the matters based on his information in the form and context in which it appears.

Reports: Information in this presentation can be found in the following public reports to ASX. Company Prospectus 2011, Releases to ASX: 9 January 2012, 12 July 2012, 15 January 2013, 20 March 2015, 5 May 2016, 10 May 2016, 11 May 2016. Quarterly Report December 2012.

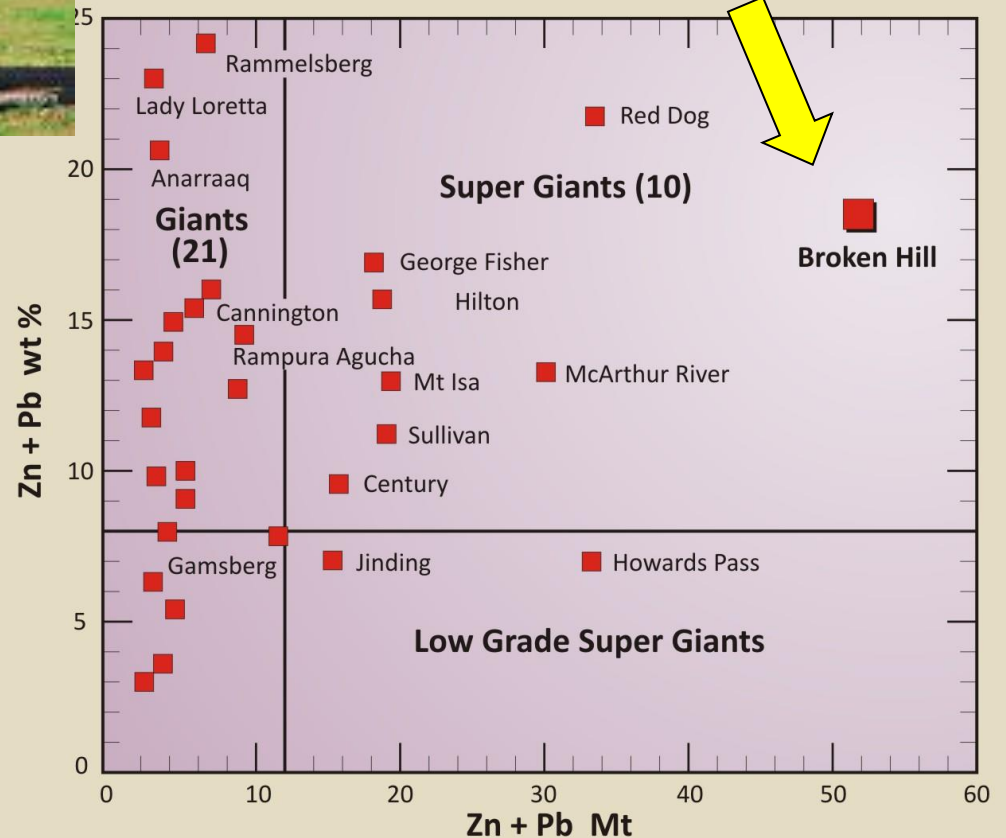
# SILVER CITY MINERALS PROJECTS



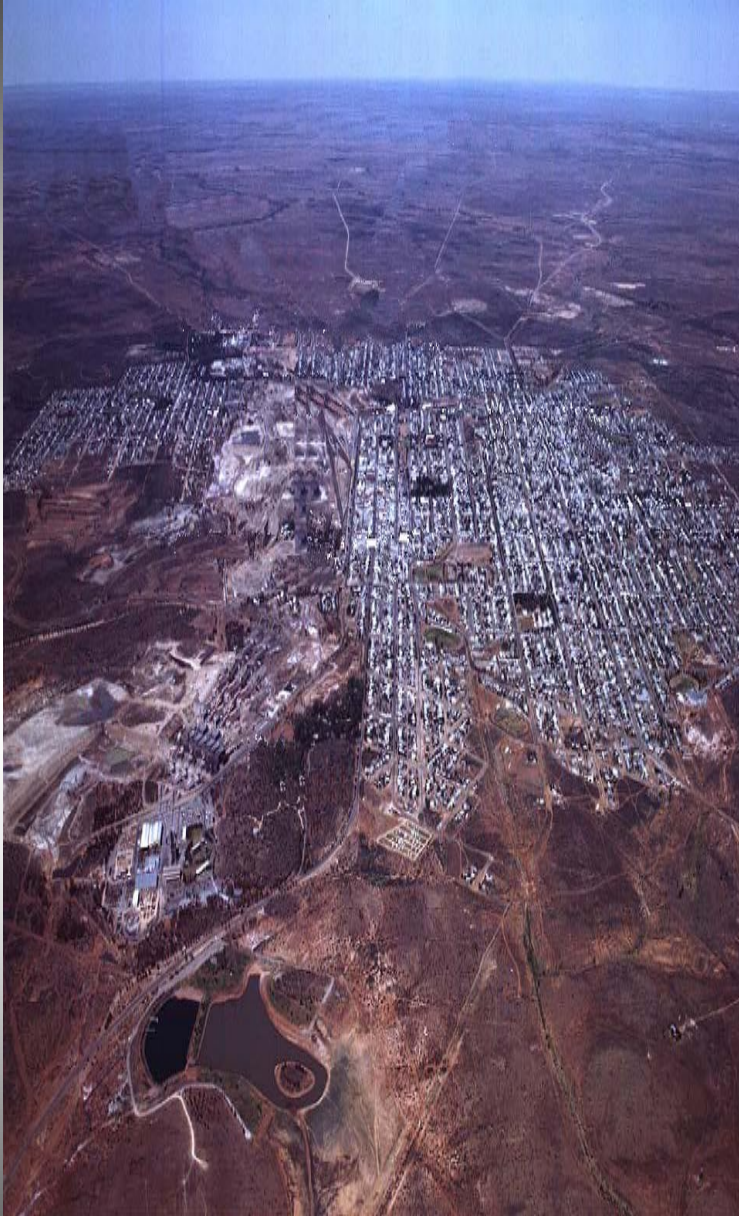


# Where does one look for + 1 Billion ounces Silver

.....elephants

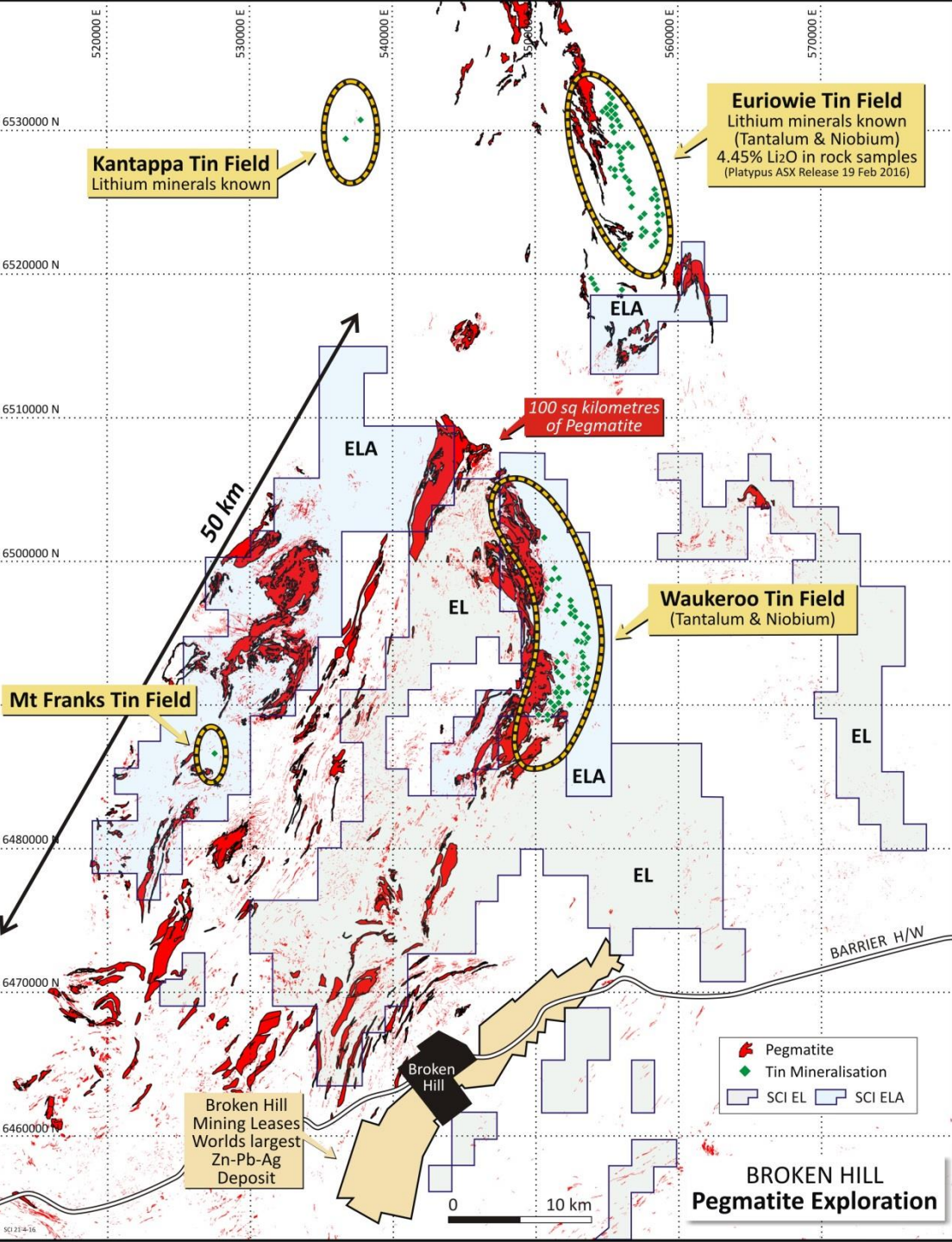






# Why Invest in Silver City Minerals?

- Significant discovery potential.
- Key projects immediately north and south of world's largest Zinc-Lead-Silver deposit at Broken Hill.
- Projected shortfall in Zinc supply.
- Zinc-lead sulphide targets and proximity to two sulphide treatment mills with +1mtpa excess capacity.
- Secure and under-explored tenure.
- New targets identified
- Excellent infrastructure



AND

## Lithium ?

- 100 square kilometres of outcropping pegmatite
- Lithium minerals known
- No lithium exploration undertaken
- Tin fields likely places to find lithium



# SILVER CITY MINERALS

ASX Code:	SCI
Issued Shares:	116.3 million
Unlisted Options:	10.5 million
Market Cap:	\$3.2 million
Cash: (end April 2016)	\$1.0 million

Major Shareholders:	
The Sentient Group:	17.74%
Variscan Group:	12.47%
Top 20 :	55.95%

Share Price:	High \$0.080
(12 months)	Low \$0.011



# Board of Directors



## **Bob Besley** Chairman

Geologist with over 40 years experience in mining and exploration. Founder and original Managing Director of CBH Resources Limited. Bob took that company from inception as a junior explorer to a large zinc, lead and silver producer with a peak market cap of \$600m. Currently Non-Exec Director KBL Mining Limited.



## **Chris Torrey** Managing Director

Geologist with over 35 years experience in international mineral exploration. Senior management and consulting roles with Cyprus-Amex, ASX-listed Golden Cross Resources, US-listed Golden Minerals and Apex Silver. Past Chairman of Golden Cross Resources.



## **Ian Plimer** Non-Executive Director

Ian Plimer was the inaugural Professor of Mining Geology (University of Adelaide) and Emeritus Professor of Earth Sciences at The University of Melbourne. Ian is considered to be the world expert on the geology of the Broken Hill orebody on which he has worked and published extensively for almost 50 years.



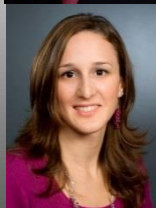
## **Greg Jones** Non-Executive Director

Greg is a geologist with 35 years exploration and mine operational experience. Senior management roles with Western Mining and Sino Gold. He currently holds directorships with ASX-listed companies; Moly Mines, Eastern Iron Limited and Thomson Resources. Greg is the Managing Director of Variscan Mines Limited.



## **Ian Hume** Non-Executive Director

Ian was a founding partner of The Sentient Group, a private equity fund specialising in global investment in the resources sector. Long career of investing in international mining and telecommunications, primarily in North and South America, Russia and the Pacific Rim.

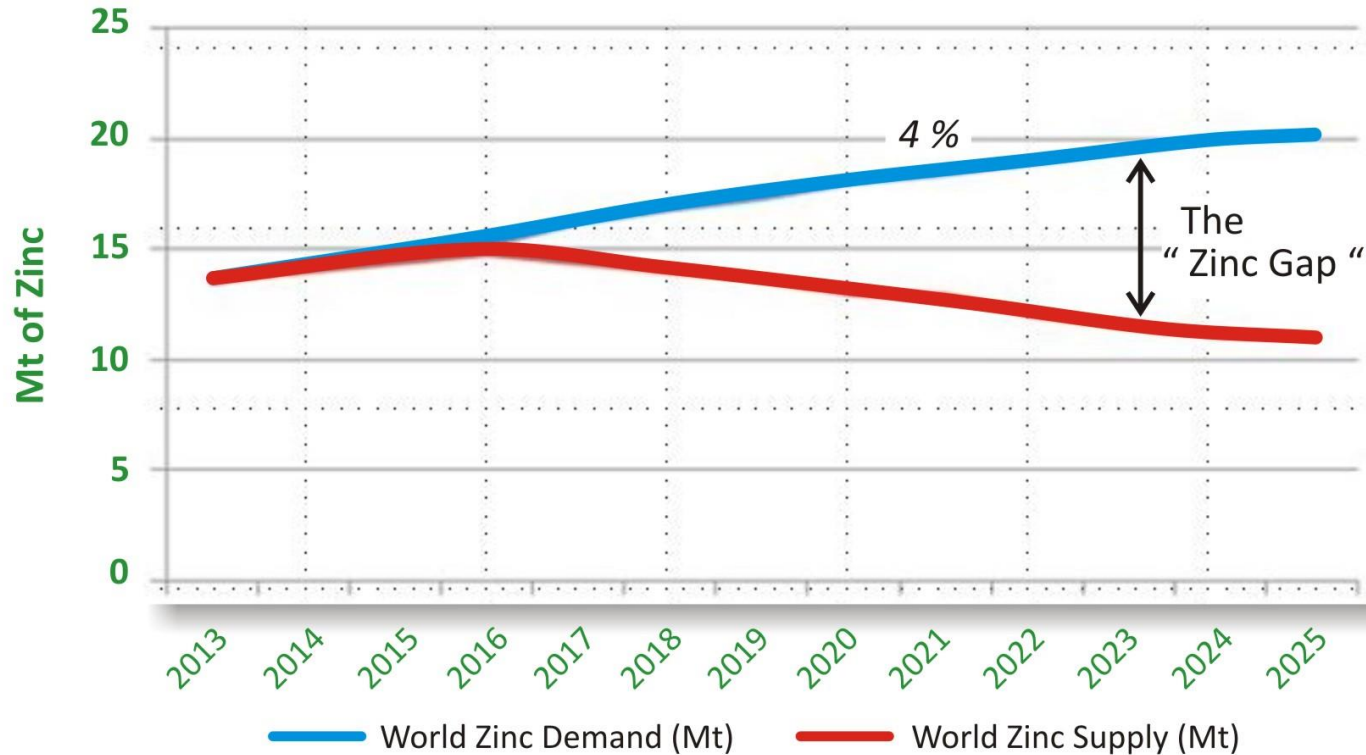


## **Yanina Barila** Alternate Non-Executive Director

Yanina is an investment manager with The Sentient Group. Yanina brings international experience in the review and evaluation of mining and energy projects and her areas of expertise include financial modelling and equity research. She is a non-executive director of TSX-list Tinka Resources Limited.



# Global Zinc Demand Supply Forecast (Mt)



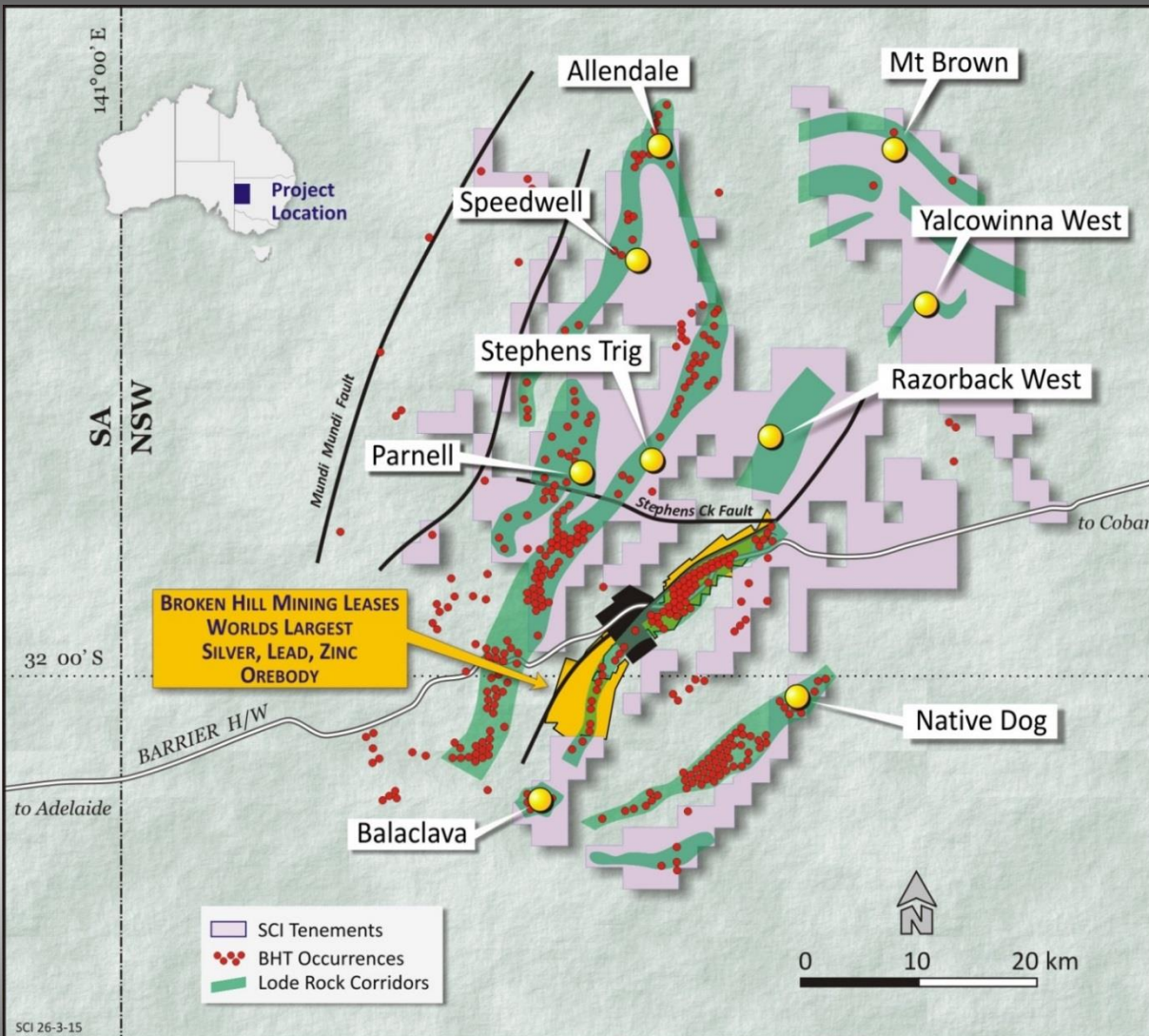
## Increasing Demand-Supply Gap forecast for Zinc

- Demand increasing
- Mines closing
- Limited new mine capacity to fill the gap

Source:  
HDR I Salva

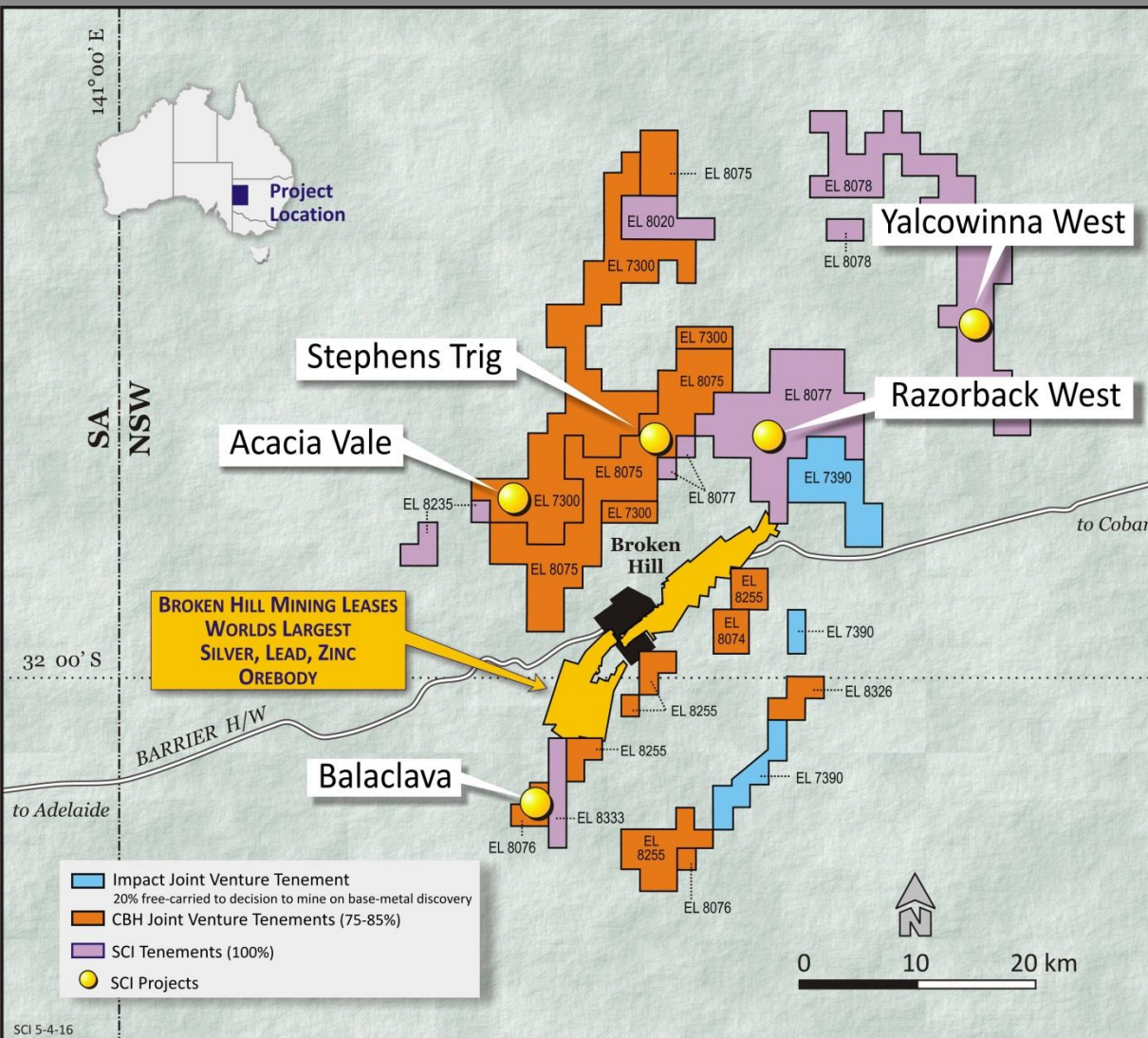
**A new zinc discovery of typical high grade Broken Hill ore (+15% Zn+Pb) will fill a significant part of the shortfall**

# SILVER CITY MINERALS BROKEN HILL



- Belt of prospective rocks throughout the tenure
- “Lode” rocks, mineral occurrences and old workings.
- 50% of tenure lies under shallow cover

# SILVER CITY MINERALS BROKEN HILL



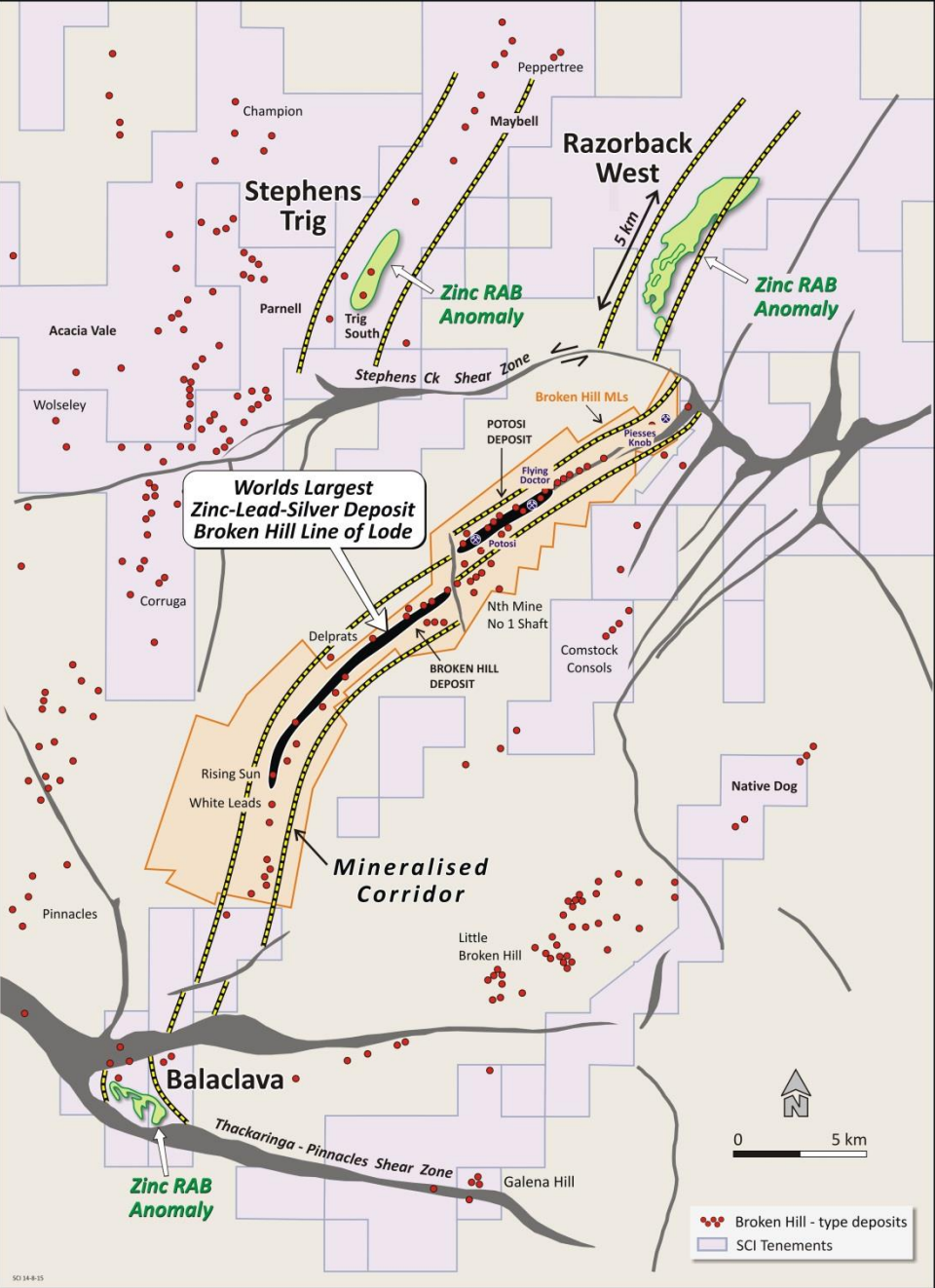
- Strong tenure position
- Partnerships with CBH Resources and Impact Minerals
- Prospective for base and precious metals, tin, tungsten, tantalum and lithium.



# SILVER CITY MINERALS BROKEN HILL

- Razorback West
- Stephens Trig
- Balaclava

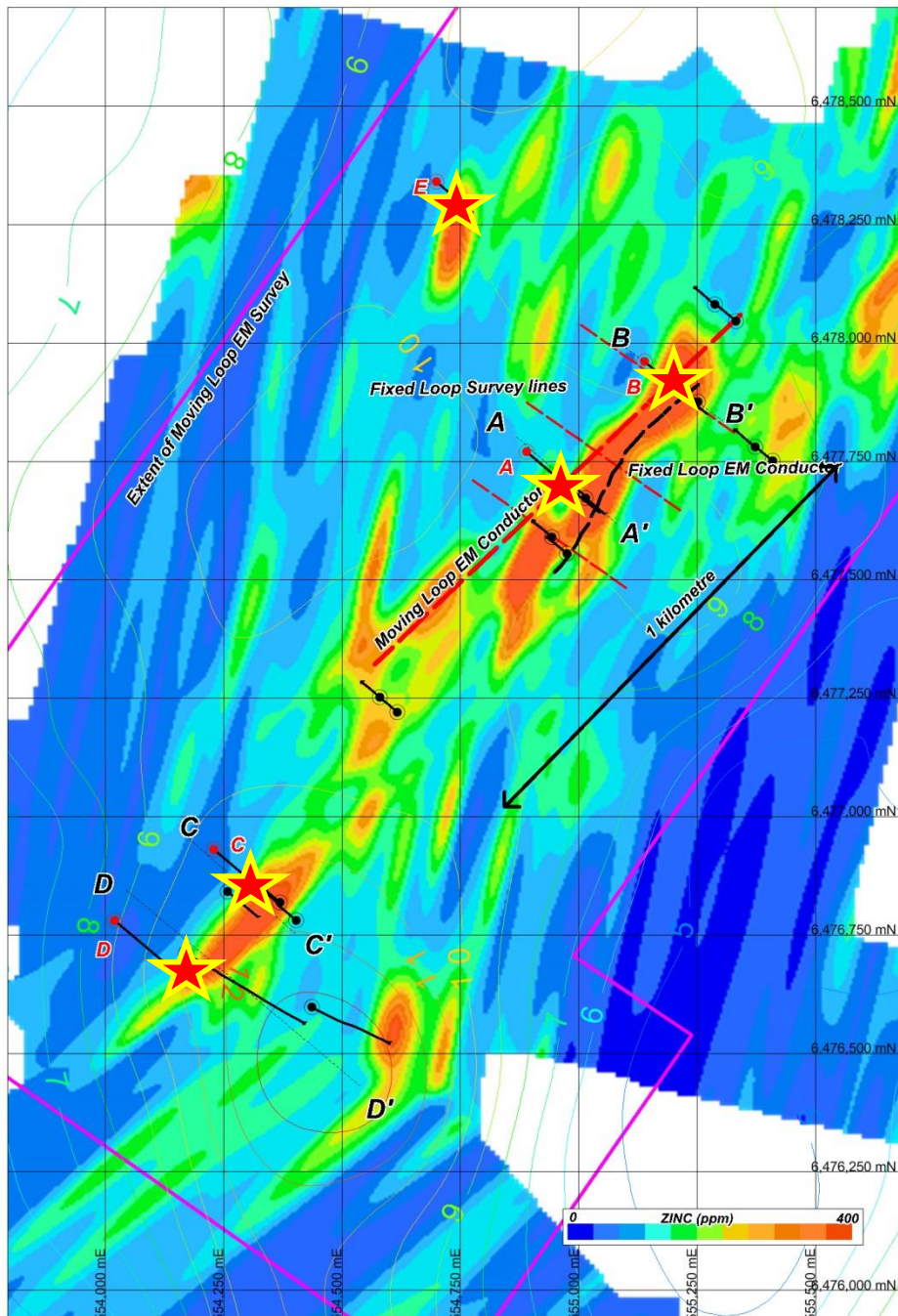
All large zinc + lead anomalies  
All under alluvial and soil cover





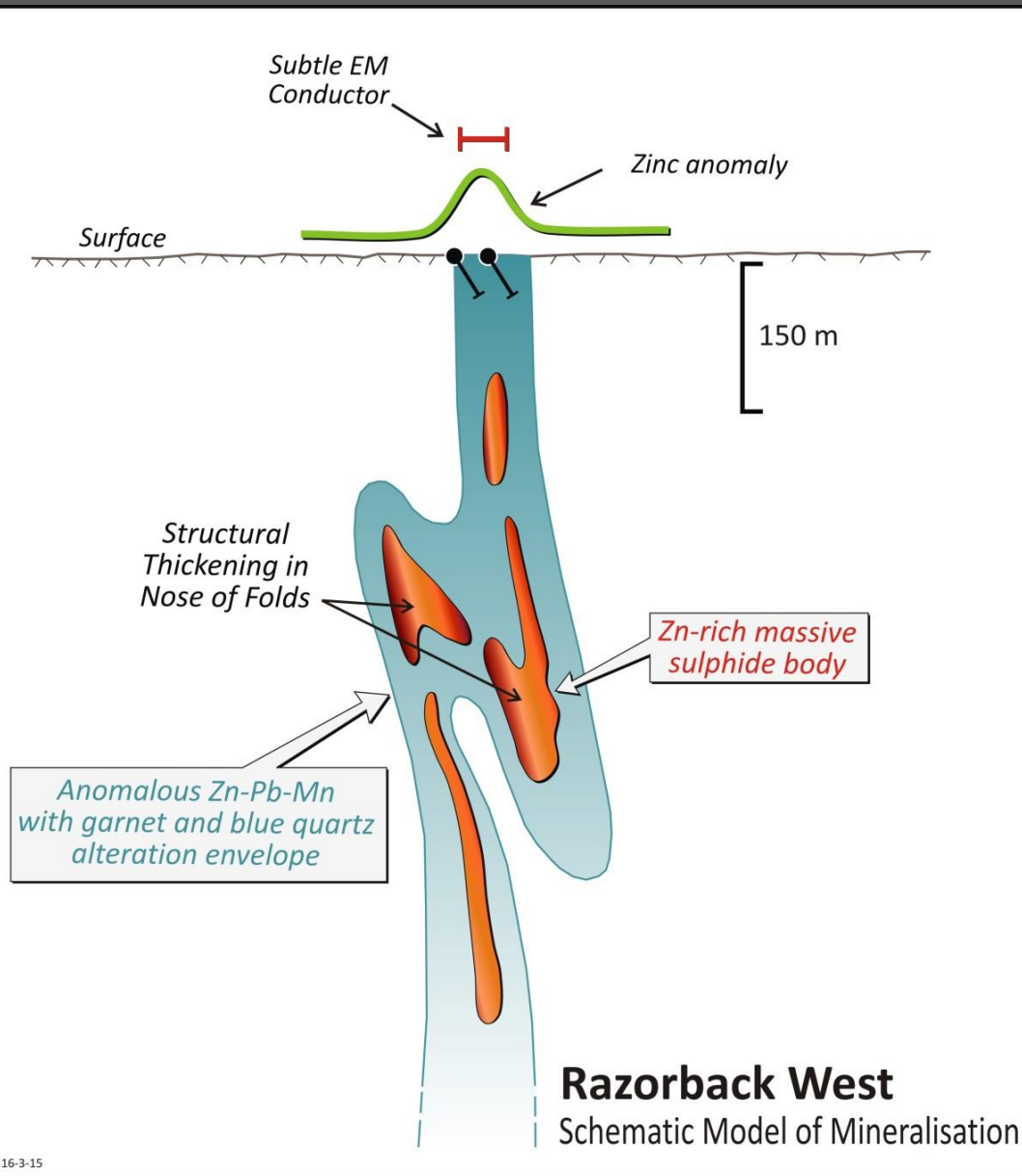
# Razorback West Drill Targets

- New drill targets based on geology, zinc geochemistry and electromagnetics
- Planned drilling July-August 2016 (application for funding under NSW New Frontiers scheme)





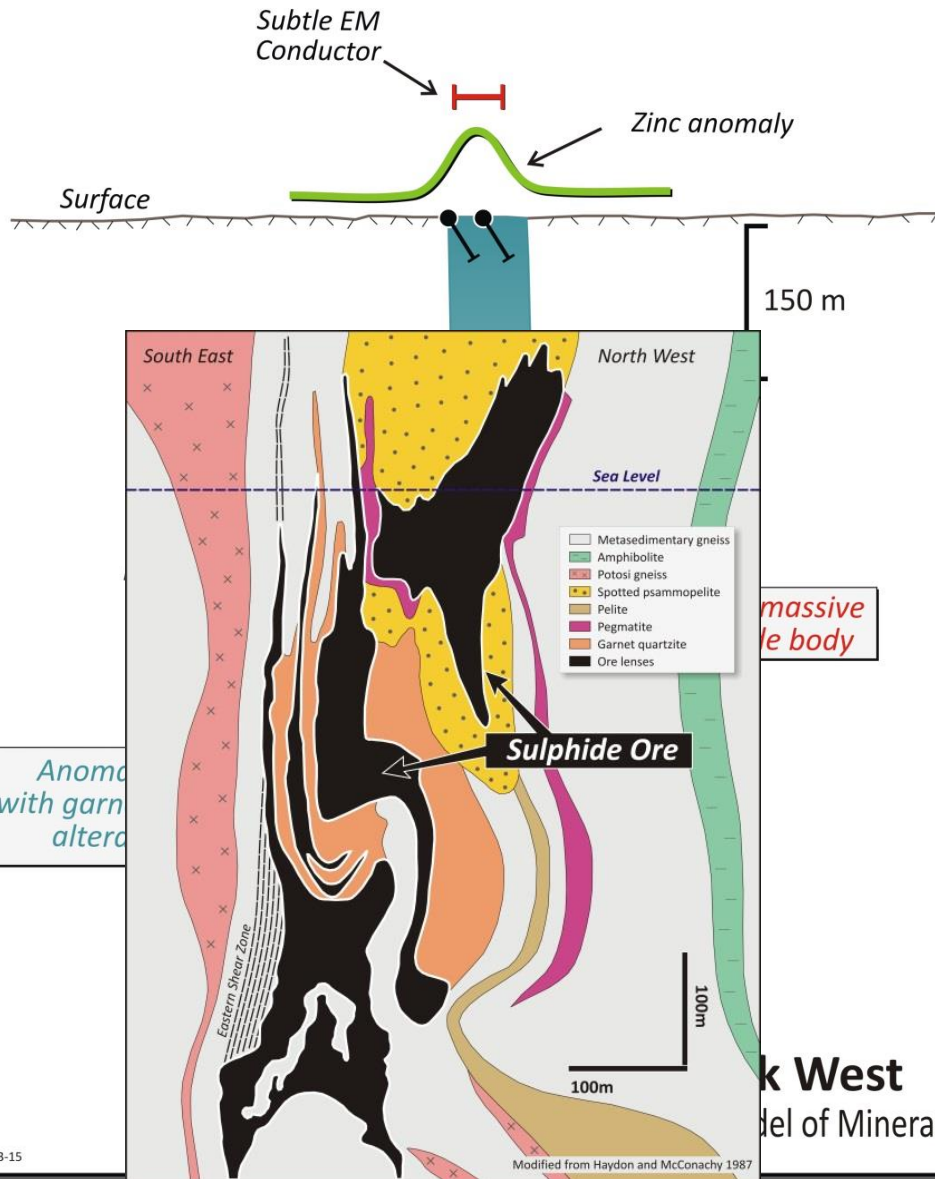
# Razorback West



- Surface zinc anomaly in shallow RAB drilling
- Zinc in shallow reverse circulation drill hole
- electromagnetic conductor
- A conceptual, zinc-rich massive sulphide body at 120 – 150 metres below the surface
- Deeper drilling required

SCI 16-3-15

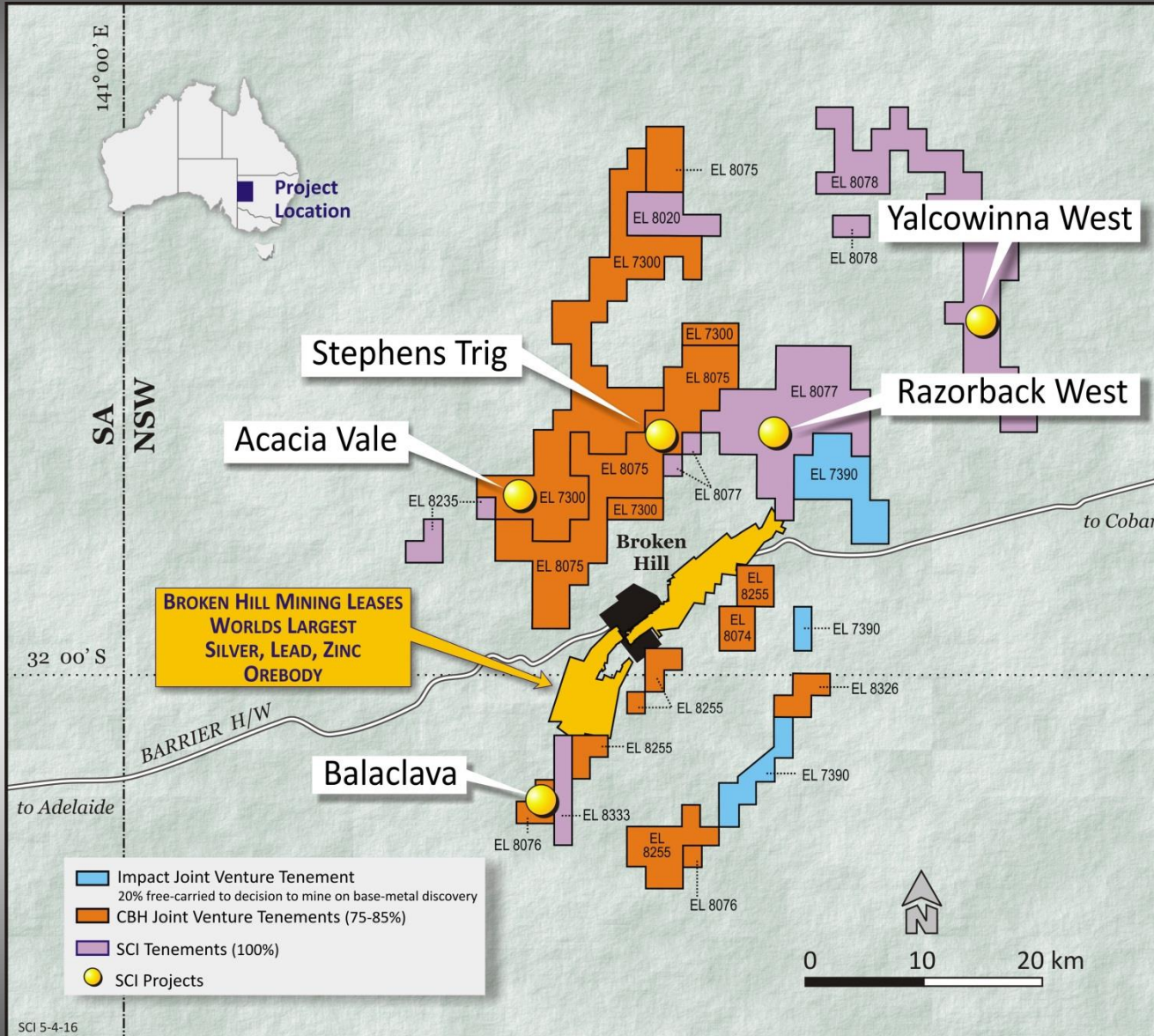
# Razorback West



The right scale

Broken Hill Deposit cross-section superimposed at same scale

# SILVER CITY MINERALS BROKEN HILL

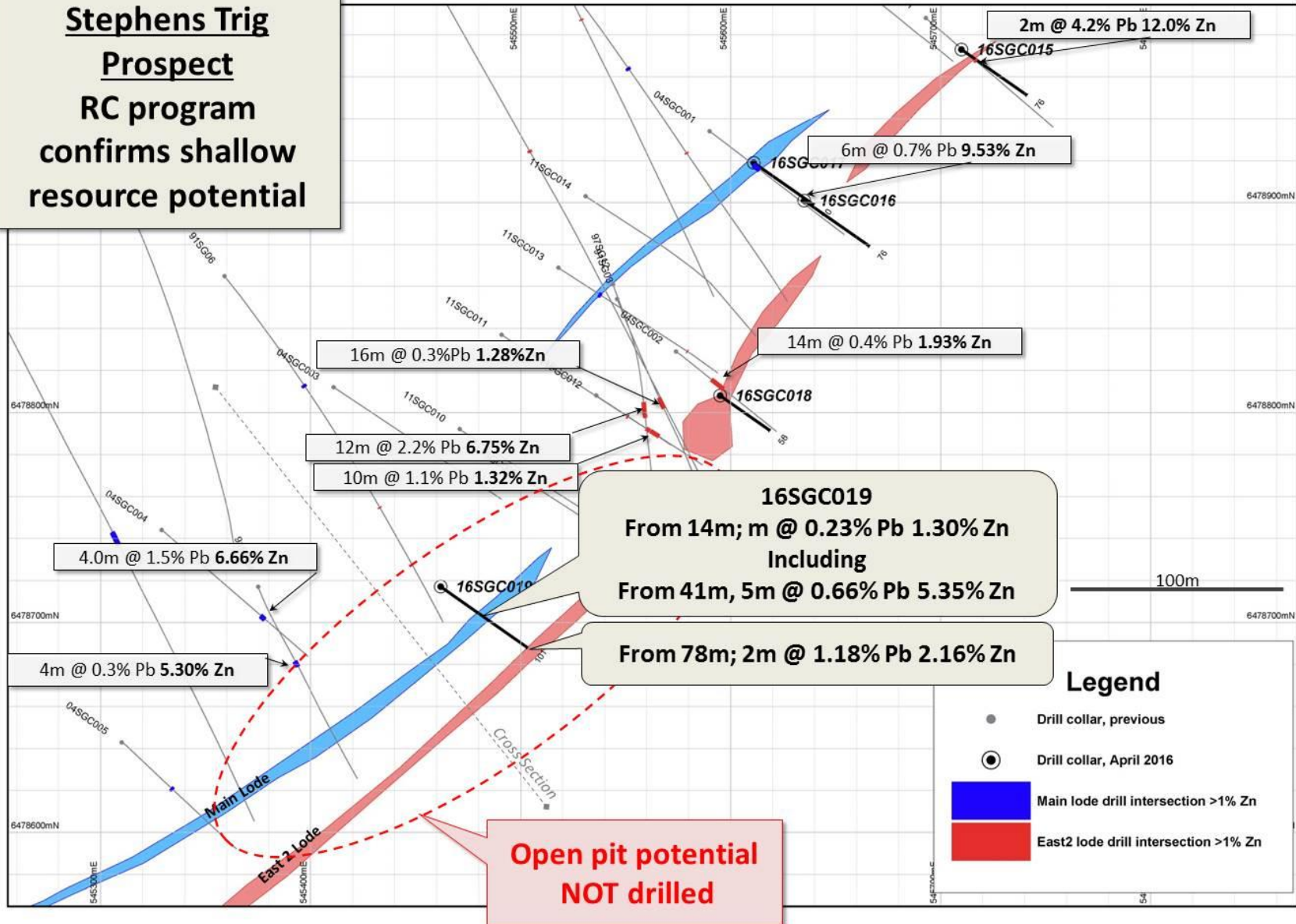


SCI 5-4-16



# Stephens Trig

**Stephens Trig  
Prospect  
RC program  
confirms shallow  
resource potential**



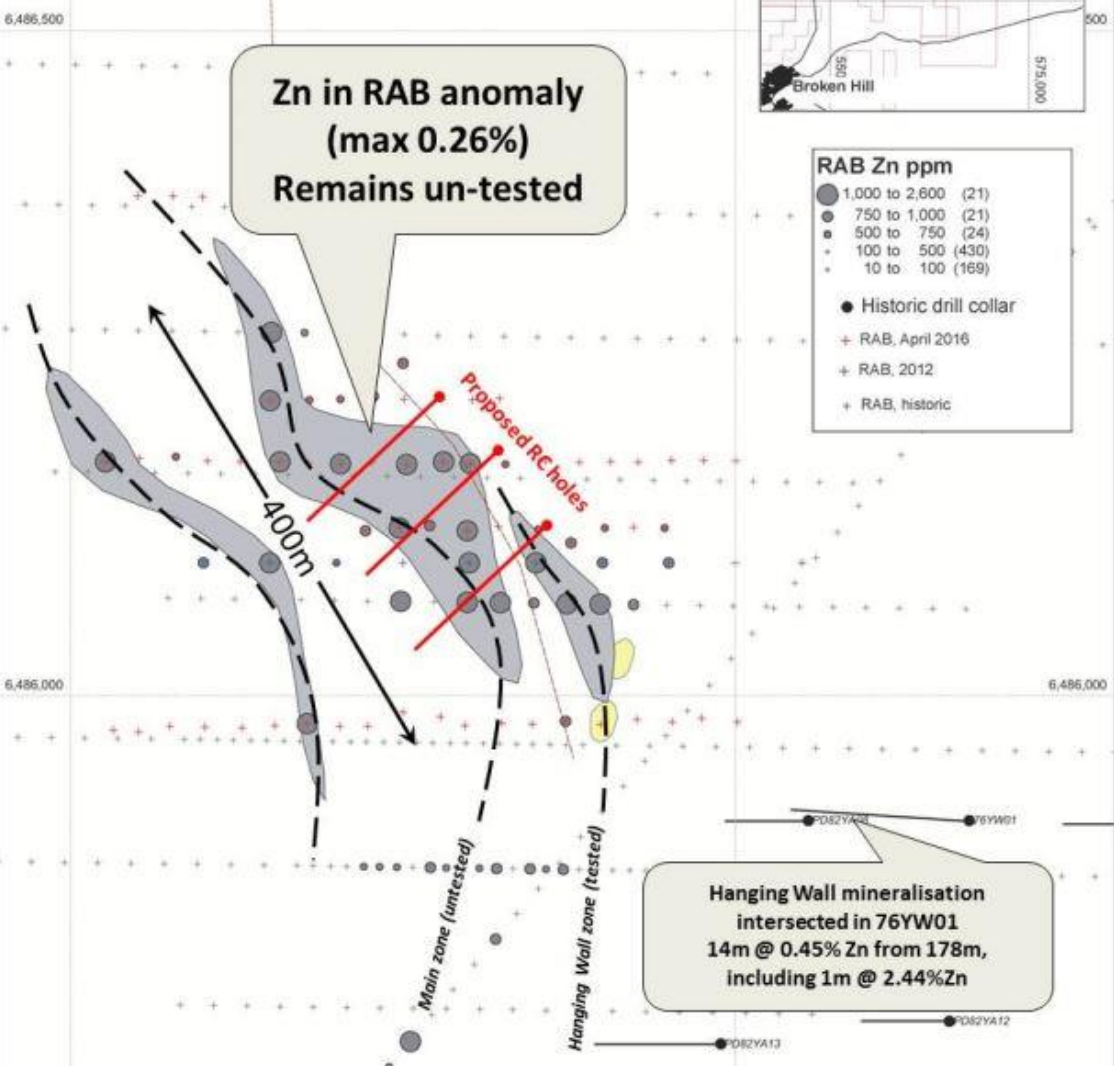
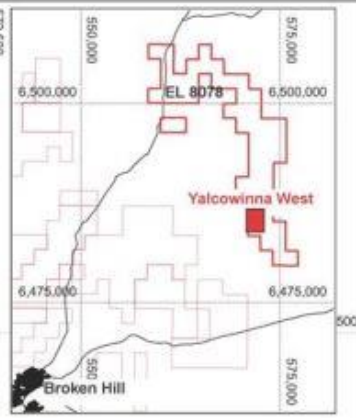
## Legend

- Drill collar, previous
- Drill collar, April 2016
- Main lode drill intersection >1% Zn
- East 2 lode drill intersection >1% Zn

# Yalcowinna West

## Yalcowinna West New Discovery of Large Zinc Anomaly in RAB

Zn in RAB anomaly  
(max 0.26%)  
Remains un-tested



Hanging Wall mineralisation  
intersected in 76YW01  
14m @ 0.45% Zn from 178m,  
including 1m @ 2.44%Zn

- New zinc zone defined by RAB
- Under alluvial and soil cover
- 400 metres long plus 100 metres wide
- Several zones.

# FUTURE PROGRAM SNAPSHOT

<b>Project</b>	<b>Program</b>	<b>Activity</b>
Razorback West	Testing geophysical and geology targets	Drilling July-August
Stephens Trig	Follow-up of open-pit potential	Drilling July-August
Yalcowinna West	Testing new zinc anomaly	Drilling July- August
Lithium	Geochemical and mineralogical sampling...is it there?	Commences May



# SILVER CITY MINERALS

## Why Invest?

### **BROKEN HILL, NSW**

- Large focused land tenure position
- Potential for high grade, giant basemetal and silver-rich orebodies
- Focus on Razorback , Stephens Trig and Yalcowinna West
- Lithium potential in pegmatites
- New round of drilling in planning stage (Razorback, Yalcowinna West and Stephens Trig)
- Geophysical surveys at Balaclava

# SILVER CITY MINERALS LIMITED

ABN 68 130 933 309



**ASX Code: SCI**

Level 1, 80 Chandos Street  
St Leonards  
NSW 2065  
Australia  
+61 2 94371737

[www.silvercityminerals.com.au](http://www.silvercityminerals.com.au)