

ASX Announcement

29 April 2016

Peninsula Mines Limited (ASX: PSM)

Exploration in South Korea
- Graphite and Lithium

- Molybdenum and Tungsten
- Gold, Silver and Base Metals

- Diversified Minerals Exploration
Western Australia

Substantial Shareholders

Aurora Minerals Limited	32%
Management	7%
Perth Select	7%
M&S Lynch	6%

Shares on Issue: 375.5m

Contact Details

Principal & Registered Office

Suite 2, Level 2
20, Kings Park Road
West Perth, WA 6005

Martin Pyle – Executive Director
Tel: +61 8 6143 1840

Karen Oswald – Media and
Investor Relations
Tel: +61 423 602 353

Ken Banks – Investor Relations
Tel: +61 402 079 999

Website

www.peninsulamines.com.au

QUARTERLY ACTIVITIES REPORT ENDING 31 MARCH 2016

HIGHLIGHTS

- During the quarter, the Company announced a private placement to raise \$1.58 million as working capital to fund ongoing lithium and graphite exploration in South Korea^{D1}.
- Following a review of available country wide lithium stream sediment data, Suyeon Mining Co. Ltd. (SMCL) the Company's wholly owned Korean subsidiary filed applications for a substantial 53 block tenement package to the northwest of the Boam lithium mine and to the south of the Sangdong tungsten mine for lithium and a range of other minerals^{D4} (Figure 1,2& 3).
- This area, referred to as the Daehyeon Project, has the highest concentration of lithium anomalism reported from the Korea Institute of Geoscience and Mineral Resources (KIGAM) country wide stream sediment geochemical survey (Figure 2).
- In addition to the anomalous stream sediment data, KIGAM has also mapped an extensive swarm of pegmatitic dykes within the applied tenement area (Figure 8)^{D4}. Pegmatites are a common host of spodumene and lepidolite lithium bearing mineralisation.
- To narrow the search area, a detailed stream sediment survey has been planned and field crews are being mobilised in early May to follow up on the KIGAM results to highlight specific stream drainage catchments for ground truthing, rock chip sampling and/or soil geochemical work.
- The Company also filed 2 tenement applications over blocks adjacent to the Boam lithium mine and a further 5 applications over tenement blocks in the Boam and Uljin lithium and tin mining district. Collectively, these are referred to as the Dongsugok Project (Figures 1-6)^{D3}.
- SMCL successfully filed 14 tenement applications over 5 historic graphite projects including Wolmyeong, Deokseung, Yongwon, Eunha and Daewon (Figure 1)^{D5,D6}.
- The Wolmyeong project was formerly the largest graphite mine in the country prior to its closure in 1987 due to declining graphite prices^{D6}. Unlike the other 4 flake graphite projects, the graphite at Wolmyeong is a product of intense contact metamorphism during the Mesozoic Era of Permo-Carboniferous coal measures of the Poun Coalfield. The metamorphism of the coal measures at Wolmyeong resulted in the production of microcrystalline "amorphous" graphite and locally coarser flake graphite (Figures 9&10)^{D6}.
- The results of historic Korea Mineral Promotion Corporation (KMPC), now the Korea Resources Corporation (KORES) sampling of Wolmyeong dumps and accessible underground workings returned graphite grades between 79-83% total graphitic carbon (TGC)^{D6} (Table 1).
- Field mapping and check sampling is underway and a bulk sample has been collected and dispatched to Australia for metallurgical analysis (Figure 10).

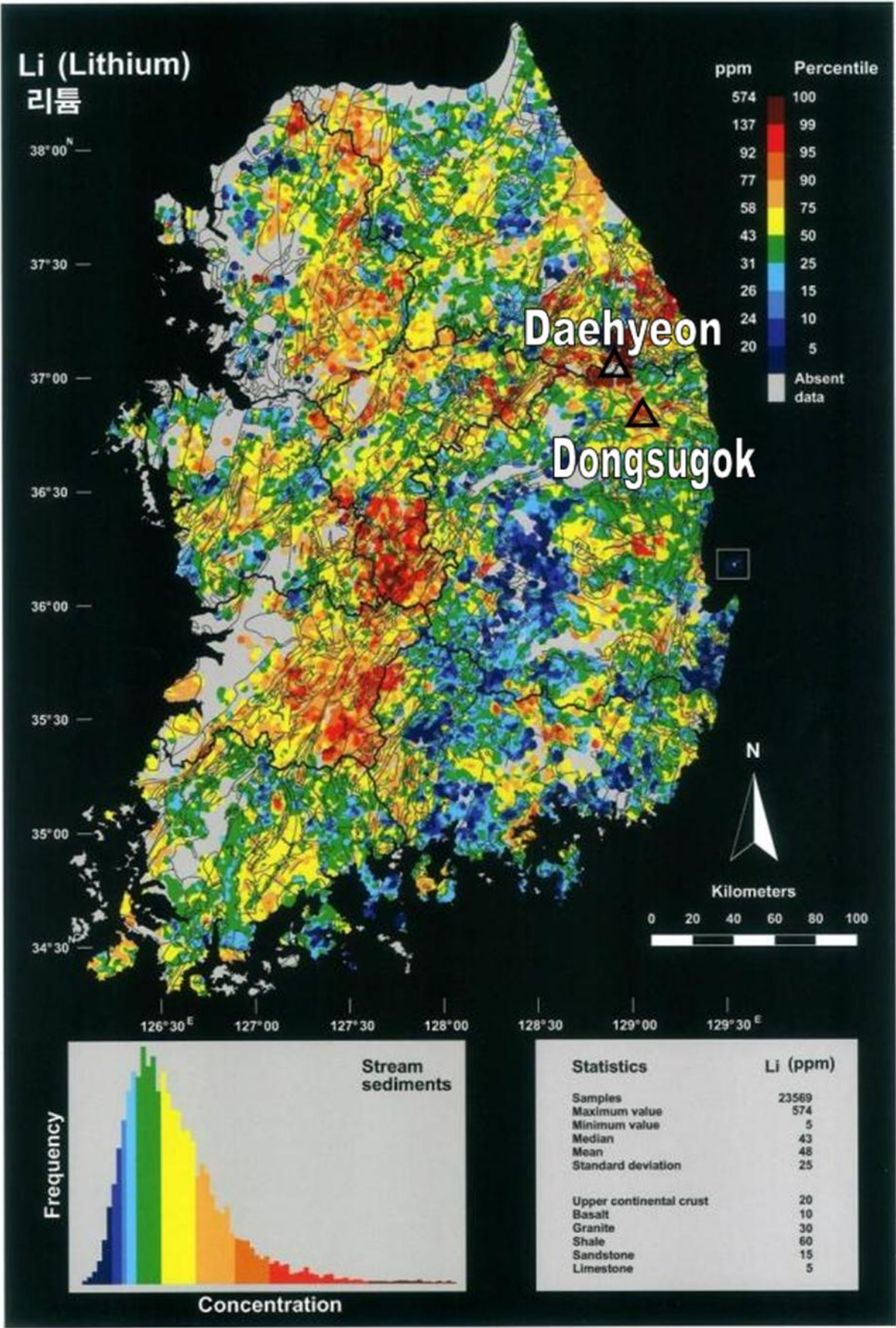
Figure 1: Location Plan of South Korean Projects



Lithium Projects

During the quarter, the Company pegged a total of 60 tenements in the central east of South Korea considered prospective for hard rock lithium mineralisation. The tenements are grouped into two main project areas collectively referred to as Daehyeon and Dongsugok (Figures 1, 2, 3, 4 & 6). The tenements cover areas with significant lithium stream sediment anomalism as reported from the KIGAM country wide stream sediment geochemical survey (Figure 2)

Figure 2: KIGAM Country wide stream sediment data for lithium^{D4}.



Daehyeon Project

The Daehyeon Project comprises a substantial 53 block tenement package to the northwest of the Boam mine and to the south of the Sangdong tungsten mine and was pegged for lithium and a range of other minerals^{D4} (Figure 1,3&4).

This area has the highest concentration of lithium anomalism reported from the KIGAM country wide stream sediment geochemical survey (Figure 2). The broad scale KIGAM stream sediment anomaly will be further refined through re-sampling of selected sample locations and by taking additional samples from many of the smaller tributaries. The new survey will aim to confirm the results of the earlier KIGAM work with the increased sample density providing additional data points to help further refine the search area and highlight specific stream catchments for follow-up ground truthing, rock chip sampling and/or soil geochemical work.

Field crews are being mobilised to commence this work in early May.

Daehyeon Prospect

The Daehyeon prospect includes ten tenement blocks that were selected due to the presence of pegmatitic dykes in an area where there is strong lithium anomalism in stream sediment values (Figures 3& 4)^{D4,8}.

Uguchi Prospect

Uguchi prospect area includes twenty nine tenement blocks over an area identified as having highly anomalous stream sediment lithium values. The elevated lithium values are interpreted to be a response to pegmatitic dykes within the prospect area (Figures 3&4)^{D4,8}.

Naedeok Prospect

Naedeok prospect includes two tenement blocks that have been targeted due to reports of tin bearing pegmatites in the area (Figures 3&4)^{D4,8}.

Deokgu Prospect

Deokgu prospect includes three tenement blocks that have been targeted due to their proximity to the mapped presence of pegmatites and the proximity to the Naedeok Prospect (Figures 3&4)^{D4,8}.

Goseon North Prospect

Goseon North prospect includes five tenement blocks that were selected due to the presence of a number of large pegmatitic outcrops (Figures 3& 4)^{D4,8}.

Goseon South Prospect

Goseon South prospect includes four tenement blocks that were identified due to the presence of pegmatitic dykes and coincident anomalous lithium stream sediment values (Figures 3 &4)^{D4,8}.

Figure 3: Prospect Areas on the KIGAM stream sediment inverse distance weighted lithium plot^{D4}. The deeper red-brown colours reflect areas of higher intensity lithium anomalism.

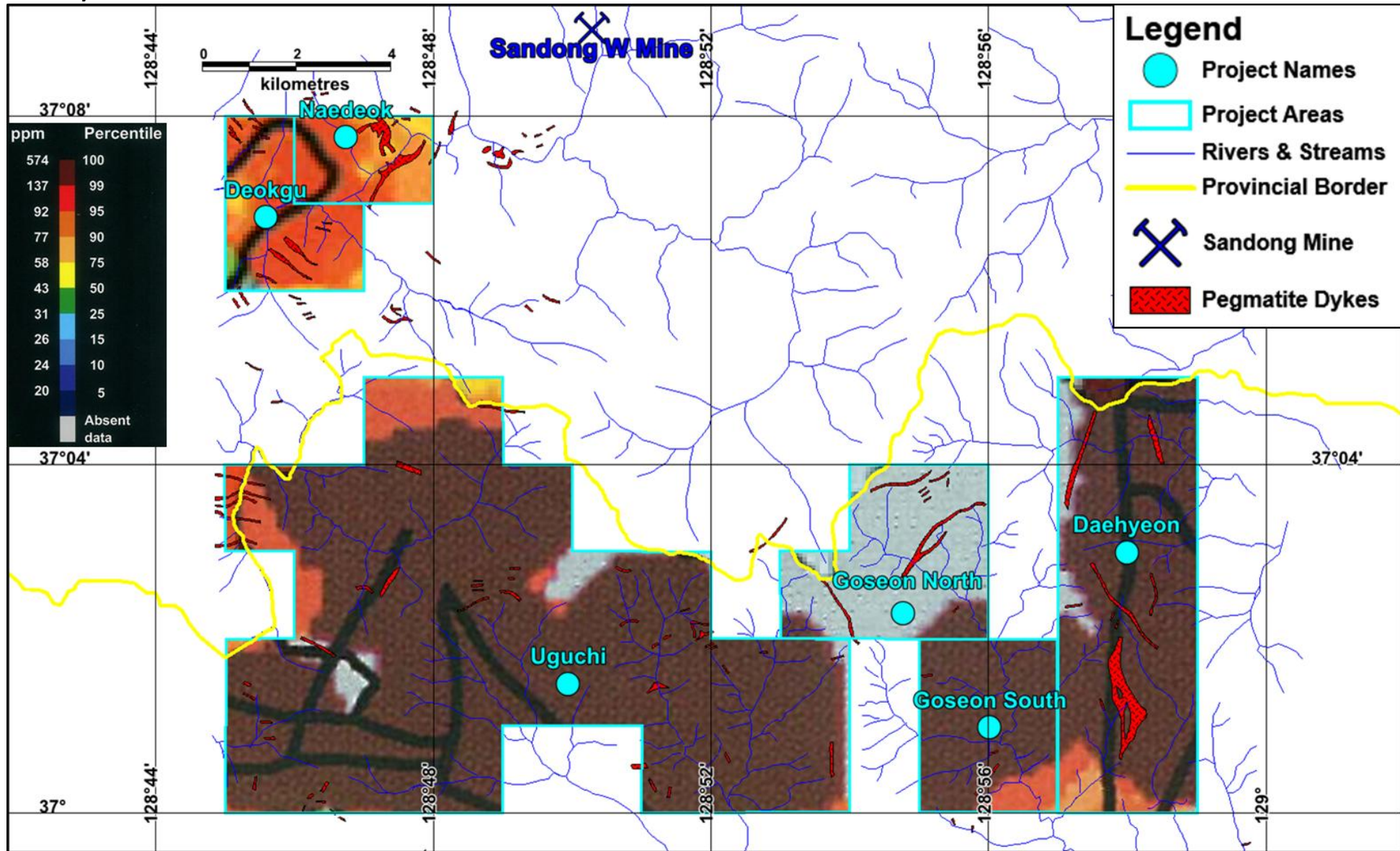
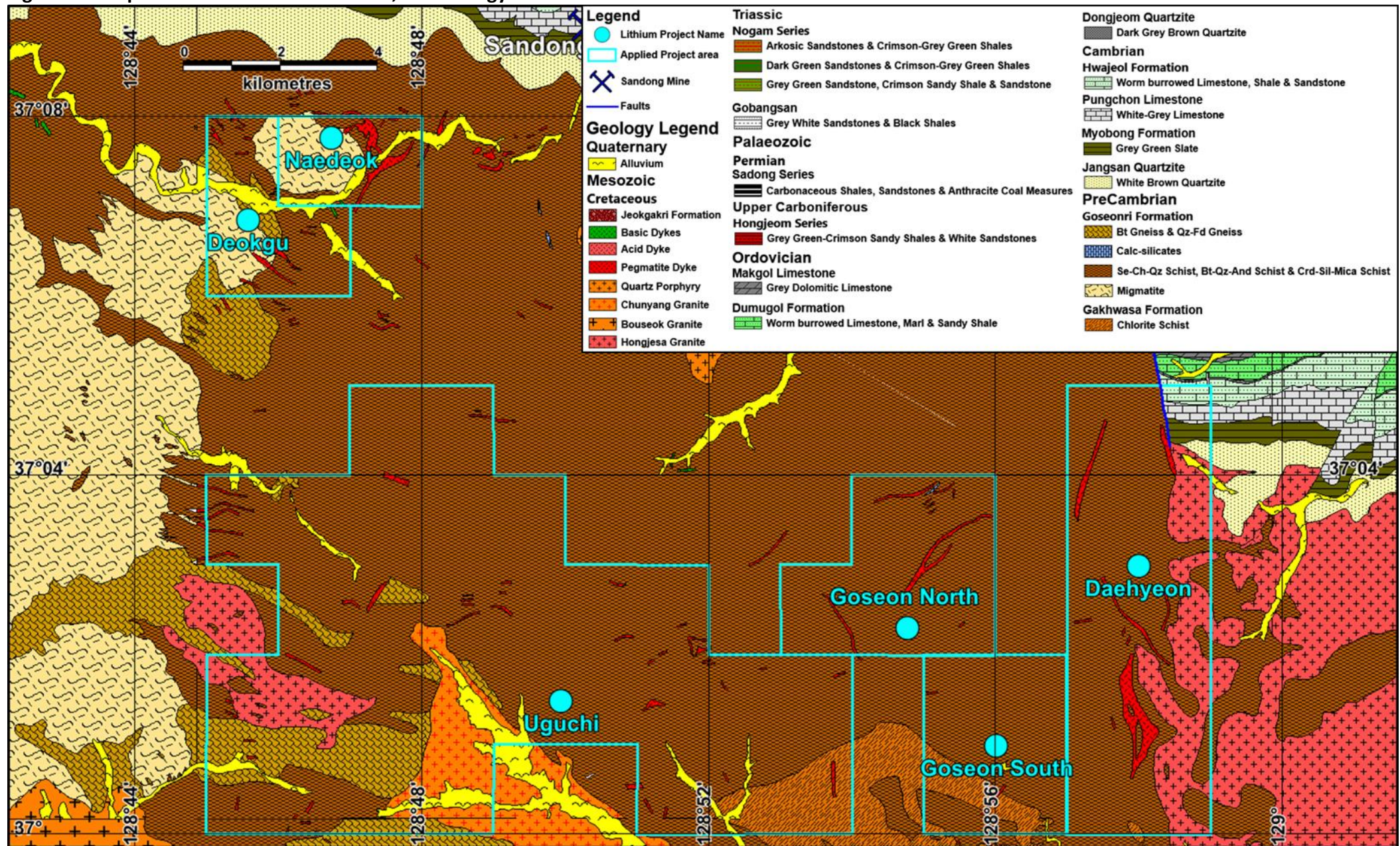


Figure 4: Prospect Areas on the KIGAM 1:50,000 Geology^{D4}.



Dongsugok Project

The Dongsugok Project is centred around and adjacent to the Boam Lithium Mine where breccia and vein style quartz lepidolite mica and spodumene bearing mineralised structures occur associated with pegmatite and aplite veins within the Janggun Limestone (Figures 5-8)^{D8}. The Boam mineralisation is interpreted to be related to a blind intrusive body (Figure 8)^{D8}. The KIGAM Socheon magnetic image shows the presence of a large magnetic high centred below the Company's Dongsugok tenement application (Figure 7)^{D8}. The magnetic high suggests the presence of an intrusive body, possibly the source of pegmatite and aplite dykes and breccias which bear the lithium mineralisation at Boam. An interpretive model for the lithium mineralisation at Boam is shown in (Figure 8).

Detailed soil sampling is being planned for this area to detect lithium anomalism previously reported from multiple sites within the Dongsugok Project catchment.

Tonggo Prospect

The Company filed 3 tenement applications over Tonggo Prospect where KIGAM had mapped pegmatitic dyke swarms^{D3}. Reconnaissance field mapping conducted during March revealed that much of the mapped pegmatite unit was biotitic gneiss (Figure 6).

Ubeong Prospect

The Company also filed 2 tenement applications over the Ubeong prospect where KIGAM has mapped pegmatitic dykes (Figures 6)^{D3}. Recent field mapping confirmed the presence of pegmatitic units at Ubeong but no visible lithium bearing mineralisation was observed in the outcrops examined to date.

**Figure 5: Lithium mineralised breccia sample, Boam Mine
(not an asset of the company)**



Figure 6: Lithium Tenement Applications on KIGAM Samgeunri 1:50,000 geology sheet^{D4}.

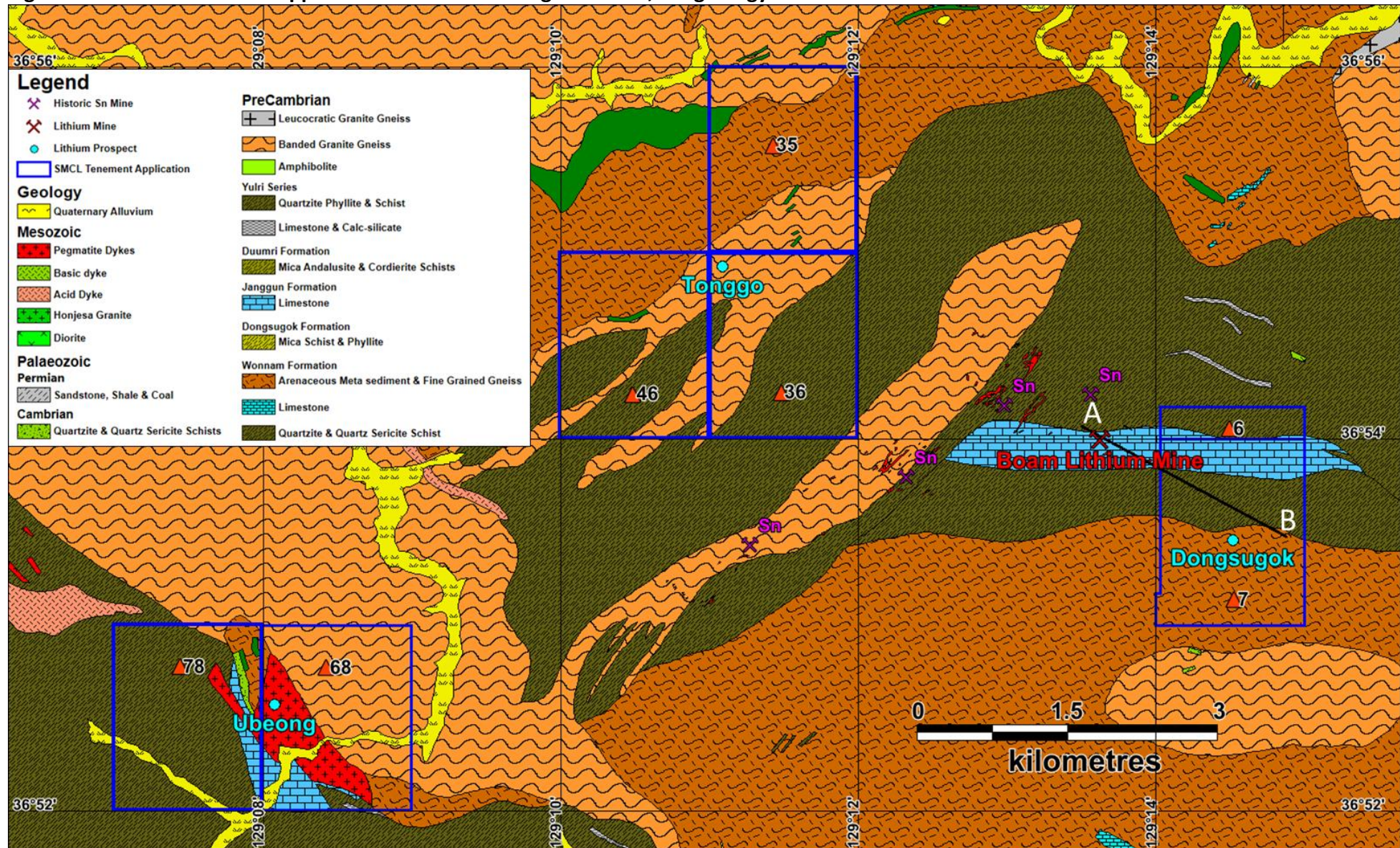


Figure 7: SMCL Lithium Projects on the KIGAM 1:100,000 Socheon magnetic image ^{D8}.

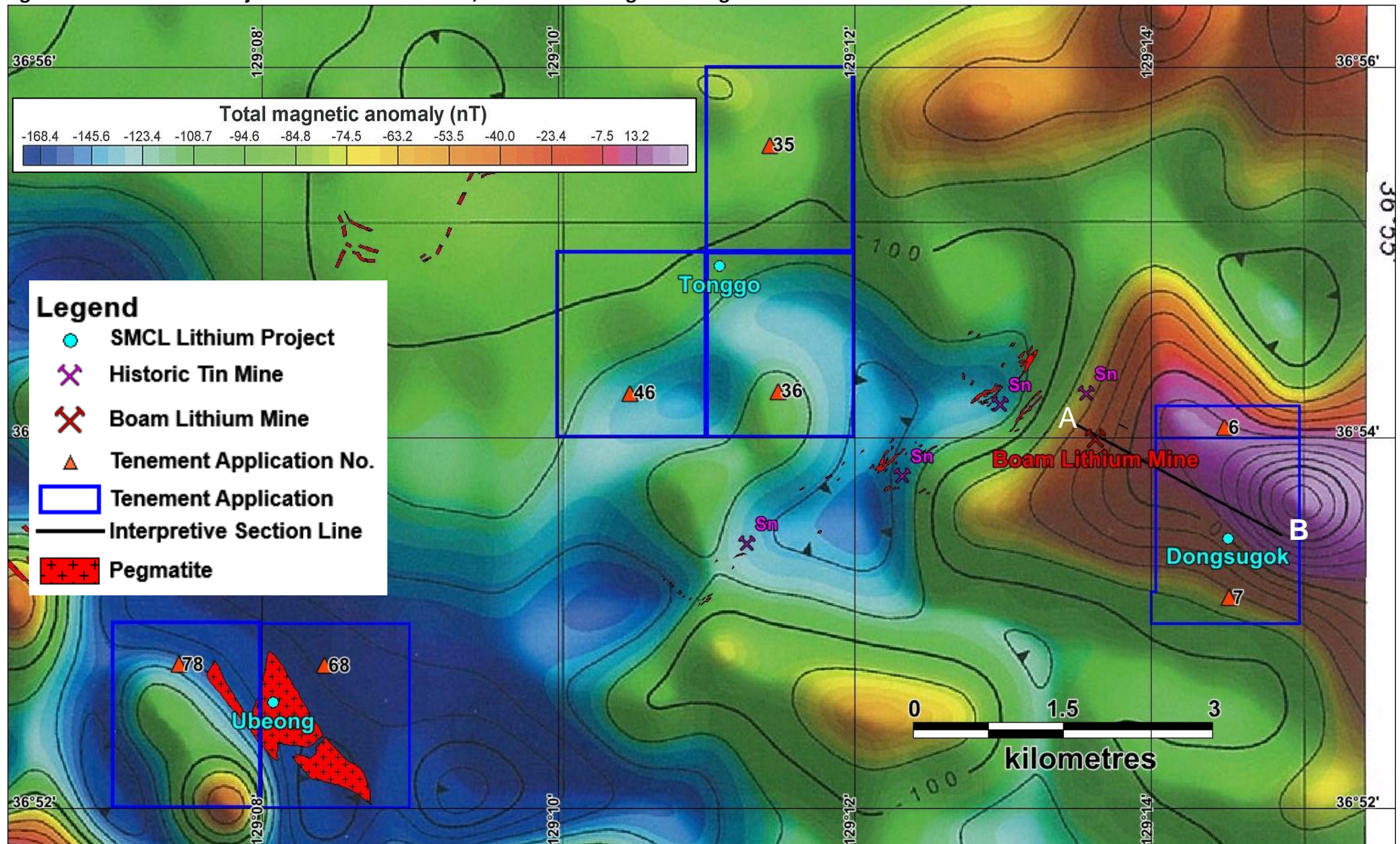
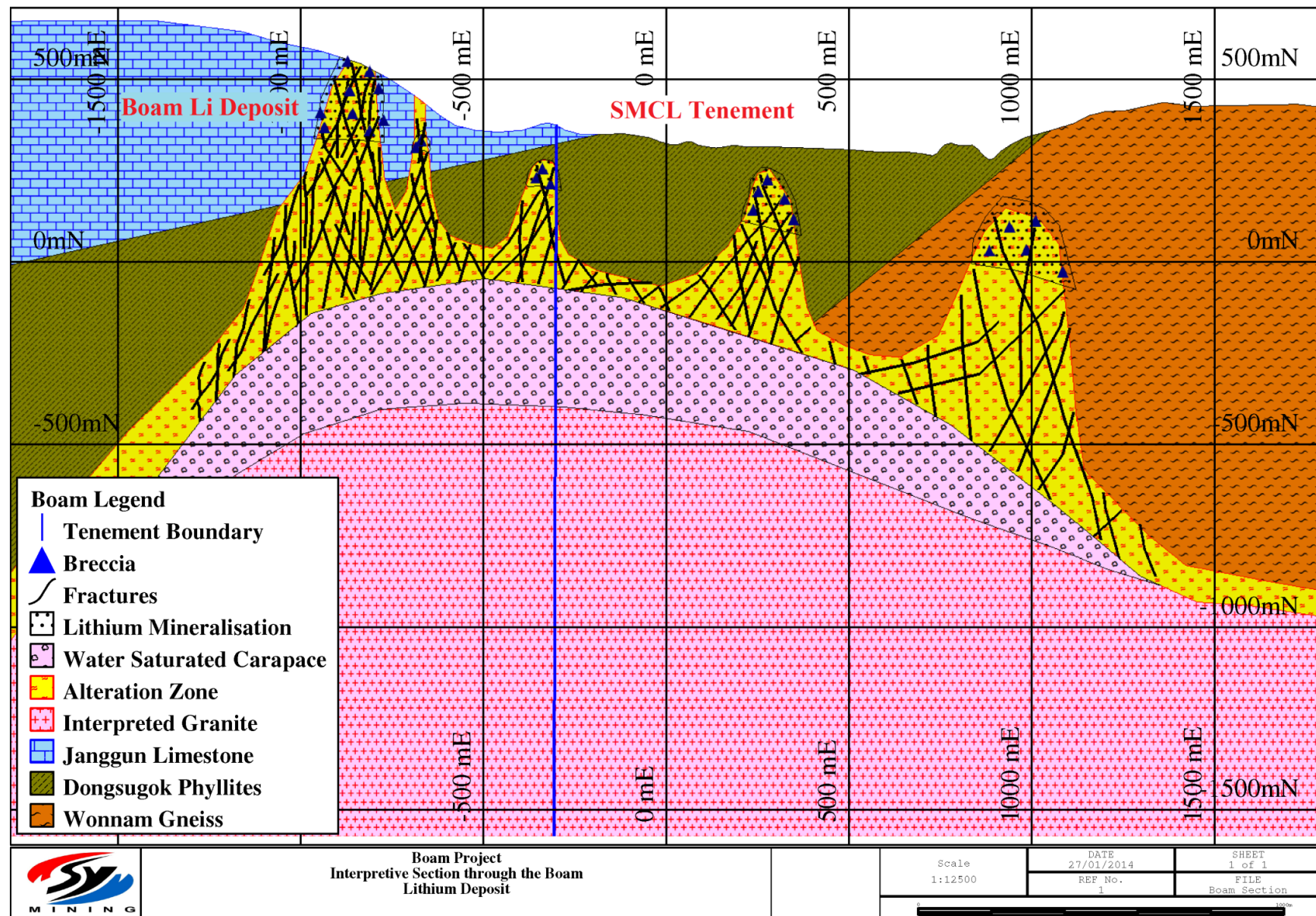


Figure 8: Interpretive model for the lithium mineralisation at Boam (modified after Burnham, 1997& Choi et al., 2014)^{D8}.



Graphite Projects

SMCL has filed 14 tenement applications over 5 projects where KMPC has previously identified graphite mineralisation^{D5,6}. Field reconnaissance and sampling over the graphite projects has commenced with the focus to date being primarily on the high grade Wolmyeong prospect.

The Company continues to assess other graphitic opportunities in South Korea as part of the ongoing business development strategy.

Wolmyeong Project

SMCL has filed 5 tenement applications over the Wolmyeong project (Figure 9)^{D6}. A sample has been collected from one of the accessible underground adits at Wolmyeong and has been sent to Perth for metallurgical assessment (Figure 10). Field mapping completed to date has confirmed the presence of numerous historical adits and dumps with evidence of graphite mining on 3 distinct horizons. Four samples have been collected and dispatched for analysis with the aim of confirming the tenor of the grades previously reported from Wolmyeong by KMPC (Table 1).

Wolmyeong was formerly the largest graphite mine in South Korea, where extremely high grades of graphite (79 to 83% TGC) were historically mined from 3 discrete metamorphosed coal seams^{D6}. Historical underground development was highly selective and of limited extent, therefore significant mineralisation potential remains both along strike and down dip^{D6}.

Table 1: Historical KMPC sampling results from the Wolmyeong Mine^{D6}.

Sample Location	Water (%)	Ash (%)	Volatile (%)	TGC (%)	Sulphide (%)
Middle horizon	0.30	12.64	3.25	83.81	0.21
Middle horizon	0.35	16.68	3.75	79.22	0.36
Rom pad	0.34	15.84	2.86	80.96	0.40
Rom pad	0.37	15.30	3.18	81.15	0.29
Lower horizon	0.33	26.86	3.27	79.54	0.35
Rom pad	0.38	15.24	3.47	80.91	0.35
Rom pad	0.32	15.08	3.58	81.02	0.25
Rom pad	0.34	15.00	4.16	80.56	0.38

Note: Minor rounding errors in the figures.

Daewon Prospect

The Daewon project consists of two tenement blocks where graphitic schists and limestone occur as part of a basement sequence dominated by Precambrian gneisses and intruded by Mesozoic granites and felsic porphyry. Previous rock chip sampling by KMPC in 1978 identified flake graphite grades ranging from 6.9 to 42.4% Total Graphitic Carbon (TGC)^{D7}. Limited reconnaissance mapping completed to date at the Daewon prospect has failed to locate the Daewon graphite bearing horizon and there appears to be a number of

spatial issues surrounding the historically mapped location of the various geological units at Daewon. Reconnaissance efforts will continue next month in a bid to locate the Daewon mineralised horizon.

Yongwon Prospect

The Yongwon and Yongwon West prospects are located on 5 adjoining tenement blocks^{D5}. The graphite bearing structures are hosted within Precambrian gneisses. The first field visit to Yongwon is planned for early next month.

Deokseung Prospect

The Deokseung prospect is a single tenement application over graphitic structures hosted within gneissic basement^{D5}. The first field visit to Deokseung is planned for early next month.

Eunha Prospect

Similarly, the Eunha prospect application covers a single tenement block where graphitic structures are hosted in granitic gneisses^{D5}. The first field visit to Eunha is planned for early next month.

Exploration on the graphite and lithium prospects has commenced with historical data review, mapping and sampling to be followed by geophysics and drilling on the prospects deemed most prospective. Each of the prospects will be reviewed on their merits and exploration efforts prioritised accordingly.

Figure 9: Plan showing the location of the Wolmyeong prospect and tenement applications on geology compiled using the KMPC mapping and the KIGAM 1:50,000 Cheongsan sheet^{D6}.

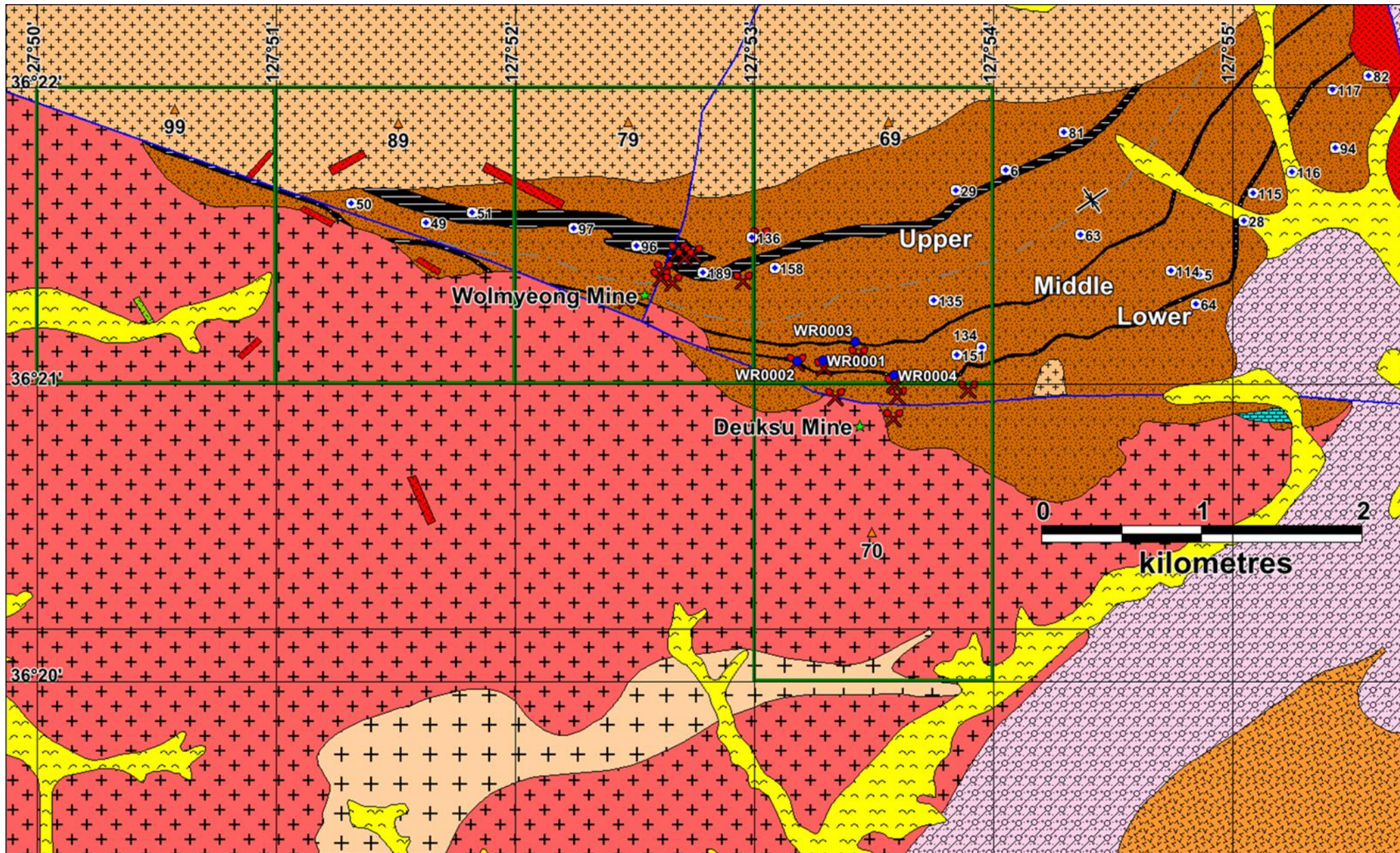


Figure 10: Wolmyeong graphite project today



Accessing historical adit for sampling



Inspecting Graphite in the "backs" of adit



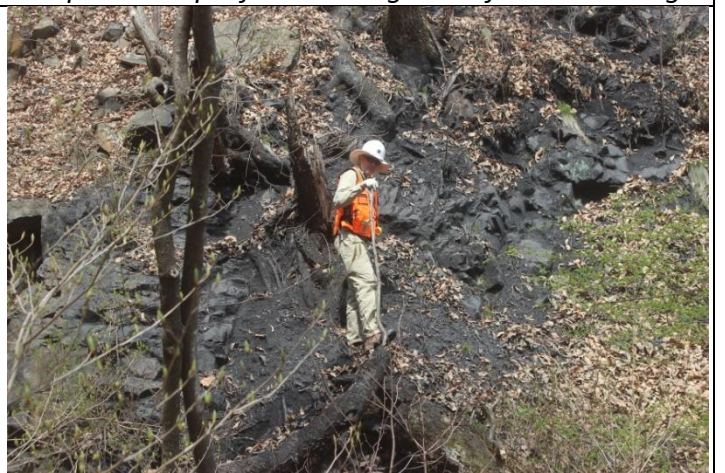
Graphite sample from surface dump



Graphite sample from underground for Met testing



Abandoned Miners cottages and offices



Graphite outcrop and surface spoil

Daehwa Project

During the quarter, preparations were made for completing the drill site rehabilitation works prior to the end of April. No other work was undertaken on the Daehwa project during the quarter.

Osu Project

A fresh application was filed over the adjoining block Osu 24. No field work was undertaken at the Osu project.

Camel Hills Joint Venture (CHJV) (Aurora 50.25% / Peninsula 49.75%)

No field activity was undertaken during the quarter.

CORPORATE

The Company's cash balance at 31 March 2016 was approximately \$1.3M. Included in this amount is part proceeds from a private placement to raise \$1.58 million as working capital to fund ongoing lithium and graphite exploration in South Korea^{D1}. The placement will result in the issue of up to 98,937,500 shares at 1.6c/share. The final tranche of 23,844,275 placement shares for \$381,508 before expenses included in the totals above was the subject of shareholder approval which was granted at a General Meeting held on 28 April 2016^{D2}. The proceeds of the final tranche add to the cash balance quoted above.

Pursuant a resolution approving the Aurora loan conversion which was also received at the General Meeting, Aurora will convert the outstanding balance of its loan to equity. This will result in the issue of 31,583,141 PSM shares to Aurora on the same terms as the shares issued in the placement.

On 22 February 2016, Daniel Noonan was appointed to the PSM board as an Executive Director^{D9}

Summary List of all previous ASX releases referenced in this announcement:

- D1. Placement to raise \$1.58M to progress South Korean Lithium and Graphite Projects, 10 Mar 2016
- D2. Peninsula Mines Limited Notice of General Meeting, 24 Mar 2016
- D3. Lithium Prospects - South Korea, 15 Jan 2016
- D4. Significant Expansion of Lithium Tenement Portfolio in South Korea, 29 Feb 2016
- D5. Graphite Prospects - South Korea, 13 Jan 2016
- D6. Applications over Historic High Grade Graphite Project, 11 Feb 2016
- D7. High Grade Graphite Samples - Daewon Prospect, 21 Jan 2016
- D8. Lithium Prospect Enhanced by Magnetic High, 1 Feb 2016
- D9. Appointment of Director to Drive Lithium and Graphite Strategy, 22 Feb 2016

Other than the information reported in this announcement, there has been no material change to the information contained in the above releases. Full versions of all the company's releases are available for download from the company's website www.peninsulamines.com.au

Martin Pyle
Executive Director
+61 429 999 552

The information in this announcement that relates to Exploration Results, Mineral Resources or Ore Reserves is based on information compiled by Mr Daniel Noonan, a Member of The Australian Institute of Mining and Metallurgy. Mr Noonan is Exploration Manager for the Company and is employed as a consultant.

Mr Noonan has sufficient experience which is relevant to the style of mineralisation and type of deposit under consideration and to the activity which he is undertaking to qualify as a Competent Person as defined in the 2012 Edition of the 'Australasian Code for Reporting of Exploration Results, Mineral Resources and Ore Reserves'. Mr Noonan consents to the inclusion in the announcement of the matters based on this information in the form and context in which it appears.

PENINSULA MINES LIMITED
Western Australian Minerals Tenement Information
(at 31 March 2016)

Project	Tenement	Peninsula Holding (Refer Note 1)	Title Holder or Applicant	Notes
Joint Venture with Aurora Minerals			Tenements held in the names of Peninsula Mines Ltd (49.75%) and Aurora Resources Pty Ltd (50.25%)	
Beancounter	E09/1323	49.75%	Refer above	Granted
Sub Licenced from Aurora Minerals				
Glenburgh	E52/1983	Note 1	Aurora Resources Pty Ltd	Granted

Note 1: The licences referred to above are subject of a Deed of Sub Licence with Aurora Minerals Limited, for Peninsula Mines Limited to acquire the rights to calcrete uranium on the tenements

Korean Tenement Holdings (at 31 March 2016)

Deposit	Mine Land Ledger No.	Mining Right No.	Title Coordinate		Grid System	PSM Holding %	Expiry Date	Notes
			Northing	Easting				
Donsan	Mokgye 125	77226	37.08333333	127.7862236	Bessel 1841 (1918 Datum)	100%	22-Aug-28	On 23 January 2014, PSM Korean subsidiary SMCL acquired 100% equity in the tenement
		77226	37.1	127.7862236				
		77226	37.1	127.8028903				
		77226	37.08333333	127.8028903				

Deposit	Mine Land Ledger No.	Minin g	Title Coordinate		Grid System	PSM Holding %	Expiry Date	Notes
Daehwa	Mokgye 126	77227	35.08333333	127.7862236	Bessel 1841 (1918 Datum)	100%	22-Aug-28	On 23 January 2014, PSM Korean subsidiary SMCL acquired 100% equity in the tenement. A report detailing the results of the drilling activities on the tenement was filed with the local Chungju Government office on 15 December 2015.
		77227	35.07916667	127.7862236				
		77227	35.07916667	127.7883069				
		77227	35.08125	127.7883069				
		77227	35.08125	127.7903903				
		77227	35.07916667	127.7903903				
		77227	35.07916667	127.7966403				
		77227	35.075	127.7966403				
		77227	35.075	127.7987236				
		77227	35.07083333	127.7987236				
		77227	35.07083333	127.8008069				
		77227	35.06875	127.8008069				
		77227	35.06875	127.8028903				
		77227	35.08333333	127.8028903				
Daehwa	Mokgye 126	76166	35.06666667	127.7862236	Bessel 1841 (1918 Datum)	100%	04-Jun-27	On 23 January 2014, PSM Korean subsidiary SMCL acquired 100% equity in the tenement
		76166	35.07916667	127.7862236				
		76166	35.07916667	127.7883069				
		76166	35.08125	127.7883069				
		76166	35.08125	127.7903903				
		76166	35.07916667	127.7903903				
		76166	35.07916667	127.7966403				
		76166	35.075	127.7966403				
		76166	35.075	127.7987236				
		76166	35.07083333	127.7987236				
		76166	35.07083333	127.8008069				
		76166	35.06875	127.8008069				
		76166	35.06875	127.8028903				
		76166	35.06666667	127.8028903				

Deposit	Mine Land Ledger No.	Minin g	Title Coordinate		Grid System	PSM Holding %	Expiry Date	Notes
Pal Gong & Baegun	Osu 23	200471	35.63333333	127.45	GRS080	100%	17-Dec-21	Exploring Right granted on 17 December 2014. An exploring Plan was lodged with the Ministry of Trade Industry and Economics on 15 December 2015. The Company now has an initial 3 year period in which to complete at least 50% of the proposed drilling work at the Osu project. At which point the Company can apply for either a 3 year extension to the exploration period or file a report detailing the results of the specified exploration activities.
			35.63333333	127.4666667				
			35.61666667	127.4666667				
			35.61666667	127.45				
Pal Gong	Osu 24		35.61666667	127.45	GRS080	100%	19-Jan-16	Tenement application filed on 6 January 2016. SMCL must lodge a Mineral Deposit Survey (MDS) prior to the 5 July 2016 expiry date to extend the tenement life for up to an additional 6 years.
			35.61666667	127.4666667				
			35.6	127.4666667				
			35.6	127.45				
Yongwon	Eumseong 11		37	127.7166	GRS080	100%	12-Jul-16	Tenement application filed on 13 January 2016. SMCL must lodge a Mineral Deposit Survey (MDS) prior to the 12 July 2016 expiry date to extend the tenement life for up to an additional 6 years.
			37	127.7333				
			36.9833	127.7333				
			36.9833	127.7166				
	Eumseong 12		36.9833	127.7166	GRS080	100%	05-Jul-16	Tenement application filed on 6 January 2016. SMCL must lodge a Mineral Deposit Survey (MDS) prior to the 5 July 2016 expiry date to extend the tenement life for up to an additional 6 years.
			36.9833	127.7333				
			36.9666	127.7333				
			36.9666	127.7166				
	Eumseong 21		37	127.7	GRS080	100%	12-Jul-16	Tenement application filed on 13 January 2016. SMCL must lodge a Mineral Deposit Survey (MDS) prior to the 12 July 2016 expiry date to extend the tenement life for up to an additional 6 years.
			37	127.7166				
			36.9833	127.7166				
			36.9833	127.7				
Yongwon	Eumseong 22		36.9833	127.7	GRS080	100%	12-Jul-16	Tenement application filed on 13 January 2016. SMCL must lodge a Mineral Deposit Survey (MDS) prior to the 12 July 2016 expiry date to extend the tenement life for up to an additional 6 years.
			36.9833	127.7166				
			36.9666	127.7166				
			36.9666	127.7				
	Eumseong 32		36.9833	127.6833	GRS080	100%	12-Jul-16	Tenement application filed on 13 January 2016. SMCL must lodge a Mineral Deposit Survey (MDS) prior to the 12 July 2016 expiry date to extend the tenement life for up to an additional 6 years.
			36.9833	127.7				
			36.9666	127.7				
			36.9666	127.6833				
Deokseung	Pocheon 96		37.91666	127.08333	GRS080	100%	05-Jul-16	Tenement application filed on 6 January 2016. SMCL must lodge a Mineral Deposit Survey (MDS) prior to the 5 July 2016 expiry date to extend the tenement life for up to an additional 6 years.
			37.91666	127.1				
			37.9	127.1				
			37.9	127.08333				
Eunha	Hongseong 107		36.56666	126.56666	GRS080	100%	05-Jul-16	Tenement application filed on 6 January 2016. SMCL must lodge a Mineral Deposit Survey (MDS) prior to the 5 July 2016 expiry date to extend the tenement life for up to
			36.56666	126.58333				
			36.55	126.58333				

Deposit	Mine Land Ledger No.	Minin g	Title Coordinate		Grid System	PSM Holding %	Expiry Date	Notes an additional 6 years.
			36.55	126.56666				
Daewon	Yangdeokwon 40		37.51666	127.93333	GRS080	100%	05-Jul-16	Tenement application filed on 6 January 2016. SMCL must lodge a Mineral Deposit Survey (MDS) prior to the 5 July 2016 expiry date to extend the tenement life for up to an additional 6 years.
			37.51666	127.95				
			37.5	127.95				
			37.5	127.93333				
Daewon	Yangdeokwon 50		37.51666	127.91666	GRS080	100%	05-Jul-16	Tenement application filed on 6 January 2016. SMCL must lodge a Mineral Deposit Survey (MDS) prior to the 5 July 2016 expiry date to extend the tenement life for up to an additional 6 years.
			37.51666	127.93333				
			37.5	127.93333				
			37.5	127.91666				
Yongun	Yuseong 30		36.35	127.45	GRS080	100%	05-Jul-16	Tenement application filed on 6 January 2016. SMCL must lodge a Mineral Deposit Survey (MDS) prior to the 5 July 2016 expiry date to extend the tenement life for up to an additional 6 years.
			36.35	127.4666				
			36.3333	127.4666				
			36.3333	127.45				
Wolmyeong	Cheongsan 69		36.36666	127.88333	GRS080	100%	03-Aug-16	Tenement application filed on 4 February 2016. SMCL must lodge a Mineral Deposit Survey (MDS) prior to the 3 August 2016 expiry date to extend the tenement life for up to an additional 6 years.
			36.36666	127.9				
			36.35	127.9				
			36.35	127.88333				
	Cheongsan 70		36.35	127.88333	GRS80	100%	03-Aug-16	Tenement application filed on 4 February 2016. SMCL must lodge a Mineral Deposit Survey (MDS) prior to the 3 August 2016 expiry date to extend the tenement life for up to an additional 6 years.
			36.35	127.9				
			36.3333	127.9				
			36.3333	127.88333				
	Cheongsan 78		36.38333	127.8666	GRS80	100%	03-Aug-16	Tenement application filed on 4 February 2016. SMCL must lodge a Mineral Deposit Survey (MDS) prior to the 3 August 2016 expiry date to extend the tenement life for up to an additional 6 years.
			36.38333	127.8833				
			36.36666	127.8333				
			36.36666	127.8666				
	Cheongsan 79		36.36666	127.8666	GRS80	100%	03-Aug-16	Tenement application filed on 4 February 2016. SMCL must lodge a Mineral Deposit Survey (MDS) prior to the 3 August 2016 expiry date to extend the tenement life for up to an additional 6 years.
			36.36666	127.8833				
			36.35	127.8333				
			36.35	127.8666				
Wolmyeong	Cheongsan 80		36.35	127.8666	GRS80	100%	03-Aug-16	Tenement application filed on 4 February 2016. SMCL must lodge a Mineral Deposit Survey (MDS) prior to the 3 August 2016 expiry date to extend the tenement life for up to an additional 6 years.
			36.35	127.8833				
			36.3333	127.8333				
			36.3333	127.8666				
	Cheongsan 89		36.36666	127.85	GRS80	100%	03-Aug-16	Tenement application filed on 4 February 2016. SMCL must lodge a Mineral Deposit Survey (MDS) prior to the 3 August 2016 expiry date to extend the tenement life for up to an additional 6 years.
			36.36666	127.8666				
			36.35	127.8666				
			36.35	127.85				
	Cheongsan 99		36.36666	127.83333	GRS80	100%	10-Aug-16	Tenement application filed on 11 February 2016. SMCL must lodge a Mineral Deposit Survey (MDS) prior to the 10 August 2016 expiry
			36.36666	127.85				

Deposit	Mine Land Ledger No.	Minin g	Title Coordinate		Grid System	PSM Holding %	Expiry Date	Notes date to extend the tenement life for up to an additional 6 years.
			36.35	127.85				
			36.35	127.83333				
Dongsugok	Hyeondong 6		36.90287	129.2339	GRS80	100%	10-Jul-16	Tenement application filed on 11 January 2016. SMCL must lodge a Mineral Deposit Survey (MDS) prior to the 10 July 2016 expiry date to extend the tenement life for up to an additional 6 years.
			36.90285	129.25				
			36.9	129.25				
			36.9	129.2339				
	Hyeondong 7		36.9	129.25	GRS80	100%	10-Jul-16	Tenement application filed on 11 January 2016. SMCL must lodge a Mineral Deposit Survey (MDS) prior to the 10 July 2016 expiry date to extend the tenement life for up to an additional 6 years.
			36.9	129.2339				
			36.88624	129.2339				
			36.88624	129.23333				
			36.833333	129.23333				
			36.833333	129.25				
Tonggo	Hyeondong 35		36.93333	129.183333	GRS80	100%	10-Jul-16	Tenement application filed on 11 January 2016. SMCL must lodge a Mineral Deposit Survey (MDS) prior to the 10 July 2016 expiry date to extend the tenement life for up to an additional 6 years.
			36.93333	129.2				
			36.916667	129.2				
			36.916667	129.183333				
Tonggo	Hyeondong 36		36.916667	129.2	GRS80	100%	10-Jul-16	Tenement application filed on 11 January 2016. SMCL must lodge a Mineral Deposit Survey (MDS) prior to the 10 July 2016 expiry date to extend the tenement life for up to an additional 6 years.
			36.916667	129.183333				
			36.9	129.183333				
			36.9	129.2				
	Hyeondong 46		36.916667	129.166667	GRS80	100%	10-Jul-16	Tenement application filed on 11 January 2016. SMCL must lodge a Mineral Deposit Survey (MDS) prior to the 10 July 2016 expiry date to extend the tenement life for up to an additional 6 years.
			36.916667	129.183333				
			36.9	129.183333				
			36.9	129.166667				
Ubeong	Hyeondong 68		36.883333	129.15	GRS80	100%	10-Jul-16	Tenement application filed on 11 January 2016. SMCL must lodge a Mineral Deposit Survey (MDS) prior to the 10 July 2016 expiry date to extend the tenement life for up to an additional 6 years.
			36.866666	129.15				
			36.866666	129.13333				
			36.883333	129.13333				
	Hyeondong 78		36.866666	129.116666	GRS80	100%	10-Jul-16	Tenement application filed on 11 January 2016. SMCL must lodge a Mineral Deposit Survey (MDS) prior to the 10 July 2016 expiry date to extend the tenement life for up to an additional 6 years.
			36.866666	129.133333				
			36.883333	129.133333				
			36.883333	129.116666				
Dahyeon	Seobyek16		37.083333	128.9833333	GRS80	100%	24-Aug-16	Tenement application filed on 25 February 2016. SMCL must lodge a Mineral Deposit Survey (MDS) prior to the 24 August 2016 expiry date to extend the tenement life for up to an additional 6 years.
			37.083333	128.966667				
			37.066667	128.966667				
			37.066667	128.9833333				
Dahyeon	Seobyek17		37.066667	128.9833333	GRS80	100%	24-Aug-16	Tenement application filed on 25 February 2016. SMCL must lodge a Mineral Deposit Survey (MDS) prior to the 24 August 2016 expiry
			37.066667	128.966667				

Deposit	Mine Land Ledger No.	Mining	Title Coordinate		Grid System	PSM Holding %	Expiry Date	Notes
			37.05	128.966667				date to extend the tenement life for up to an additional 6 years.
			37.05	128.9833333				
Dahyeon	Seobyek18		37.05	128.9833333	GRS80	100%	24-Aug-16	Tenement application filed on 25 February 2016. SMCL must lodge a Mineral Deposit Survey (MDS) prior to the 24 August 2016 expiry date to extend the tenement life for up to an additional 6 years.
			37.05	128.966667				
			37.03333	128.966667				
			37.03333	128.9833333				
Dahyeon	Seobyek19		37.03333	128.9833333	GRS80	100%	24-Aug-16	Tenement application filed on 25 February 2016. SMCL must lodge a Mineral Deposit Survey (MDS) prior to the 24 August 2016 expiry date to extend the tenement life for up to an additional 6 years.
			37.03333	128.966667				
			30.016667	128.966667				
			37.016667	128.9833333				
Dahyeon	Seobyek20		37.016667	128.9833333	GRS80	100%	24-Aug-16	Tenement application filed on 25 February 2016. SMCL must lodge a Mineral Deposit Survey (MDS) prior to the 24 August 2016 expiry date to extend the tenement life for up to an additional 6 years.
			37.016667	128.966667				
			37	128.966667				
			37	128.9833333				
Dahyeon	Seobyek26		37.083333	128.95	GRS80	100%	24-Aug-16	Tenement application filed on 25 February 2016. SMCL must lodge a Mineral Deposit Survey (MDS) prior to the 24 August 2016 expiry date to extend the tenement life for up to an additional 6 years.
			37.083333	128.96667				
			37.066667	128.96667				
			37.066667	128.95				
Dahyeon	Seobyek27		37.066667	128.95	GRS80	100%	24-Aug-16	Tenement application filed on 25 February 2016. SMCL must lodge a Mineral Deposit Survey (MDS) prior to the 24 August 2016 expiry date to extend the tenement life for up to an additional 6 years.
			37.066667	128.96667				
			37.05	128.96667				
			37.05	128.95				
Dahyeon	Seobyek28		37.05	128.95	GRS80	100%	24-Aug-16	Tenement application filed on 25 February 2016. SMCL must lodge a Mineral Deposit Survey (MDS) prior to the 24 August 2016 expiry date to extend the tenement life for up to an additional 6 years.
			37.05	128.96667				
			37.03333	128.96667				
			37.03333	128.95				
Dahyeon	Seobyek29		37.03333	128.95	GRS80	100%	24-Aug-16	Tenement application filed on 25 February 2016. SMCL must lodge a Mineral Deposit Survey (MDS) prior to the 24 August 2016 expiry date to extend the tenement life for up to an additional 6 years.
			37.03333	128.96667				
			30.016667	128.96667				
			37.016667	128.95				
Dahyeon	Seobyek30		37.016667	128.95	GRS80	100%	24-Aug-16	Tenement application filed on 25 February 2016. SMCL must lodge a Mineral Deposit Survey (MDS) prior to the 24 August 2016 expiry date to extend the tenement life for up to an additional 6 years.
			37.016667	128.96667				
			37	128.96667				

Deposit	Mine Land Ledger No.	Minin g	Title Coordinate		Grid System	PSM Holding %	Expiry Date	Notes
			37	128.95				
Goeseon North	Seobyek47		37.066667	128.91667	GRS80	100%	24-Aug-16	Tenement application filed on 25 February 2016. SMCL must lodge a Mineral Deposit Survey (MDS) prior to the 24 August 2016 expiry date to extend the tenement life for up to an additional 6 years.
			37.066667	128.9333				
			37.05	128.9333				
			37.05	128.91667				
			37.05	128.91667				
Goeseon North	Seobyek48		37.05	128.91667	GRS80	100%	24-Aug-16	Tenement application filed on 25 February 2016. SMCL must lodge a Mineral Deposit Survey (MDS) prior to the 24 August 2016 expiry date to extend the tenement life for up to an additional 6 years.
			37.05	128.9333				
			37.03333	128.9333				
			37.03333	128.91667				
			37.05	128.91667				
Goeseon North	Seobyek57		37.066667	128.9	GRS80	100%	24-Aug-16	Tenement application filed on 25 February 2016. SMCL must lodge a Mineral Deposit Survey (MDS) prior to the 24 August 2016 expiry date to extend the tenement life for up to an additional 6 years.
			37.066667	128.91667				
			37.05	128.91667				
			37.05	128.9				
			37.05	128.9				
Goeseon North	Seobyek58		37.05	128.9	GRS80	100%	24-Aug-16	Tenement application filed on 25 February 2016. SMCL must lodge a Mineral Deposit Survey (MDS) prior to the 24 August 2016 expiry date to extend the tenement life for up to an additional 6 years.
			37.05	128.91667				
			37.03333	128.91667				
			37.03333	128.9				
			37.03333	128.9				
Goeseon North	Seobyek68		37.05	128.8833	GRS80	100%	24-Aug-16	Tenement application filed on 25 February 2016. SMCL must lodge a Mineral Deposit Survey (MDS) prior to the 24 August 2016 expiry date to extend the tenement life for up to an additional 6 years.
			37.05	128.9				
			37.03333	128.9				
			37.03333	128.8833				
			37.03333	128.8833				
Goeseon South	Seobyek39		37.03333	128.9333	GRS80	100%	24-Aug-16	Tenement application filed on 25 February 2016. SMCL must lodge a Mineral Deposit Survey (MDS) prior to the 24 August 2016 expiry date to extend the tenement life for up to an additional 6 years.
			37.03333	128.95				
			30.016667	128.95				
			37.016667	128.9333				
			37.016667	128.9333				
Goeseon South	Seobyek40		37.016667	128.95	GRS80	100%	24-Aug-16	Tenement application filed on 25 February 2016. SMCL must lodge a Mineral Deposit Survey (MDS) prior to the 24 August 2016 expiry date to extend the tenement life for up to an additional 6 years.
			37	128.95				
			37	128.9333				
			37.03333	128.91667				
			37.03333	128.9333				
Goeseon South	Seobyek49		30.016667	128.9333	GRS80	100%	24-Aug-16	Tenement application filed on 25 February 2016. SMCL must lodge a Mineral Deposit Survey (MDS) prior to the 24 August 2016 expiry date to extend the tenement life for up to an additional 6 years.
			37.016667	128.91667				
			37.03333	128.9333				
			37.03333	128.9333				
			37.016667	128.91667				
Goeseon South	Seobyek50		37.016667	128.91667	GRS80	100%	24-Aug-16	Tenement application filed on 25 February 2016. SMCL must lodge a Mineral Deposit Survey (MDS)
			37.016667	128.9333				

Deposit	Mine Land Ledger No.	Minin g	Title Coordinate		Grid System	PSM Holding %	Expiry Date	Notes
			37	128.9333				prior to the 24 August 2016 expiry date to extend the tenement life for up to an additional 6 years.
			37	128.91667				
Deokgu	Seobyek134		37.11667	128.7667	GRS80	100%	24-Aug-16	Tenement application filed on 25 February 2016. SMCL must lodge a Mineral Deposit Survey (MDS) prior to the 24 August 2016 expiry date to extend the tenement life for up to an additional 6 years.
			37.11667	128.7833				
			37.1	128.7833				
			37.1	128.7667				
Deokgu	Seobyek143		37.1333	128.75	GRS80	100%	24-Aug-16	Tenement application filed on 25 February 2016. SMCL must lodge a Mineral Deposit Survey (MDS) prior to the 24 August 2016 expiry date to extend the tenement life for up to an additional 6 years.
			37.1333	128.7667				
			37.11667	128.7667				
			37.11667	128.75				
Deokgu	Seobyek144		37.11667	128.75	GRS80	100%	24-Aug-16	Tenement application filed on 25 February 2016. SMCL must lodge a Mineral Deposit Survey (MDS) prior to the 24 August 2016 expiry date to extend the tenement life for up to an additional 6 years.
			37.11667	128.7667				
			37.1	128.7667				
			37.1	128.75				
Naedeok	Seobyek123		37.1333	128.7833	GRS80	100%	24-Aug-16	Tenement application filed on 25 February 2016. SMCL must lodge a Mineral Deposit Survey (MDS) prior to the 24 August 2016 expiry date to extend the tenement life for up to an additional 6 years.
			37.1333	128.8				
			37.11667	128.8				
			37.11667	128.7833				
Naedeok	Seobyek133		37.1333	128.7667	GRS80	100%	24-Aug-16	Tenement application filed on 25 February 2016. SMCL must lodge a Mineral Deposit Survey (MDS) prior to the 24 August 2016 expiry date to extend the tenement life for up to an additional 6 years.
			37.1333	128.7833				
			37.11667	128.7833				
			37.11667	128.7667				
Uguchi	Seobyek69		37.03333	128.8833	GRS80	100%	24-Aug-16	Tenement application filed on 25 February 2016. SMCL must lodge a Mineral Deposit Survey (MDS) prior to the 24 August 2016 expiry date to extend the tenement life for up to an additional 6 years.
			37.03333	128.9				
			30.016667	128.9				
			37.016667	128.8833				
Uguchi	Seobyek70		37.016667	128.8833	GRS80	100%	24-Aug-16	Tenement application filed on 25 February 2016. SMCL must lodge a Mineral Deposit Survey (MDS) prior to the 24 August 2016 expiry date to extend the tenement life for up to an additional 6 years.
			37.016667	128.9				
			37	128.9				
			37	128.8833				
Uguchi	Seobyek79		37.03333	128.8667	GRS80	100%	24-Aug-16	Tenement application filed on 25 February 2016. SMCL must lodge a Mineral Deposit Survey (MDS) prior to the 24 August 2016 expiry date to extend the tenement life for up to an additional 6 years.
			37.03333	128.8833				
			30.016667	128.8833				
			37.016667	128.8667				
Uguchi	Seobyek80		37.016667	128.8667	GRS80	100%	24-Aug-16	Tenement application filed on 25 February 2016. SMCL must lodge a Mineral Deposit Survey (MDS) prior to the 24 August 2016 expiry date to extend the tenement life for up to an additional 6 years.
			37.016667	128.8833				
			37	128.8833				
			37	128.8667				
Uguchi	Seobyek88		37.05	128.85	GRS80	100%	24-Aug-16	Tenement application filed on 25 February 2016. SMCL must lodge a Mineral Deposit Survey (MDS)
			37.05	128.8667				

Deposit	Mine Land Ledger No.	Mining	Title Coordinate		Grid System	PSM Holding %	Expiry Date	Notes
			37.03333	128.8667				prior to the 24 August 2016 expiry date to extend the tenement life for up to an additional 6 years.
			37.03333	128.85				
Uguchi	Seobyek89		37.03333	128.85	GRS80	100%	24-Aug-16	Tenement application filed on 25 February 2016. SMCL must lodge a Mineral Deposit Survey (MDS) prior to the 24 August 2016 expiry date to extend the tenement life for up to an additional 6 years.
			37.03333	128.8667				
			30.016667	128.8667				
			37.016667	128.85				
Uguchi	Seobyek90		37.016667	128.85	GRS80	100%	24-Aug-16	Tenement application filed on 25 February 2016. SMCL must lodge a Mineral Deposit Survey (MDS) prior to the 24 August 2016 expiry date to extend the tenement life for up to an additional 6 years.
			37.016667	128.8667				
			37	128.8667				
			37	128.85				
Uguchi	Seobyek98		37.05	128.8333	GRS80	100%	24-Aug-16	Tenement application filed on 25 February 2016. SMCL must lodge a Mineral Deposit Survey (MDS) prior to the 24 August 2016 expiry date to extend the tenement life for up to an additional 6 years.
			37.05	128.85				
			37.03333	128.85				
			37.03333	128.8333				
Uguchi	Seobyek99		37.03333	128.8333	GRS80	100%	24-Aug-16	Tenement application filed on 25 February 2016. SMCL must lodge a Mineral Deposit Survey (MDS) prior to the 24 August 2016 expiry date to extend the tenement life for up to an additional 6 years.
			37.03333	128.85				
			30.016667	128.85				
			37.016667	128.8333				
Uguchi	Seobyek107		37.066667	128.81667	GRS80	100%	24-Aug-16	Tenement application filed on 25 February 2016. SMCL must lodge a Mineral Deposit Survey (MDS) prior to the 24 August 2016 expiry date to extend the tenement life for up to an additional 6 years.
			37.066667	128.8333				
			37.05	128.8333				
			37.05	128.81667				
Uguchi	Seobyek108		37.05	128.81667	GRS80	100%	24-Aug-16	Tenement application filed on 25 February 2016. SMCL must lodge a Mineral Deposit Survey (MDS) prior to the 24 August 2016 expiry date to extend the tenement life for up to an additional 6 years.
			37.05	128.8333				
			37.03333	128.8333				
			37.03333	128.81667				
Uguchi	Seobyek109		37.03333	128.81667	GRS80	100%	24-Aug-16	Tenement application filed on 25 February 2016. SMCL must lodge a Mineral Deposit Survey (MDS) prior to the 24 August 2016 expiry date to extend the tenement life for up to an additional 6 years.
			37.03333	128.8333				
			30.016667	128.8333				
			37.016667	128.81667				
Uguchi	Seobyek116		37.083333	128.8	GRS80	100%	24-Aug-16	Tenement application filed on 25 February 2016. SMCL must lodge a Mineral Deposit Survey (MDS) prior to the 24 August 2016 expiry date to extend the tenement life for up to an additional 6 years.
			37.083333	128.81667				
			37.066667	128.81667				
			37.066667	128.8				
Uguchi	Seobyek117		37.066667	128.8	GRS80	100%	24-Aug-16	Tenement application filed on 25 February 2016. SMCL must lodge a Mineral Deposit Survey (MDS) prior to the 24 August 2016 expiry date to extend the tenement life for up to an additional 6 years.
			37.066667	128.81667				
			37.05	128.81667				
			37.05	128.8				
Uguchi	Seobyek118		37.05	128.8	GRS80	100%	24-Aug-16	Tenement application filed on 25 February 2016. SMCL must lodge a Mineral Deposit Survey (MDS)
			37.05	128.81667				

Deposit	Mine Land Ledger No.	Minin g	Title Coordinate		Grid System	PSM Holding %	Expiry Date	Notes
			37.03333	128.81667				prior to the 24 August 2016 expiry date to extend the tenement life for up to an additional 6 years.
			37.03333	128.8				
Uguchi	Seobyek119		37.03333	128.8	GRS80	100%	24-Aug-16	Tenement application filed on 25 February 2016. SMCL must lodge a Mineral Deposit Survey (MDS) prior to the 24 August 2016 expiry date to extend the tenement life for up to an additional 6 years.
			37.03333	128.81667				
			30.016667	128.81667				
			37.016667	128.8				
Uguchi	Seobyek120		37.016667	128.8	GRS80	100%	24-Aug-16	Tenement application filed on 25 February 2016. SMCL must lodge a Mineral Deposit Survey (MDS) prior to the 24 August 2016 expiry date to extend the tenement life for up to an additional 6 years.
			37.016667	128.81667				
			37	128.81667				
			37	128.8				
Uguchi	Seobyek126		37.083333	128.7833	GRS80	100%	24-Aug-16	Tenement application filed on 25 February 2016. SMCL must lodge a Mineral Deposit Survey (MDS) prior to the 24 August 2016 expiry date to extend the tenement life for up to an additional 6 years.
			37.083333	128.8				
			37.066667	128.8				
			37.066667	128.7833				
Uguchi	Seobyek127		37.066667	128.7833	GRS80	100%	24-Aug-16	Tenement application filed on 25 February 2016. SMCL must lodge a Mineral Deposit Survey (MDS) prior to the 24 August 2016 expiry date to extend the tenement life for up to an additional 6 years.
			37.066667	128.8				
			37.05	128.8				
			37.05	128.7833				
Uguchi	Seobyek128		37.05	128.7833	GRS80	100%	24-Aug-16	Tenement application filed on 25 February 2016. SMCL must lodge a Mineral Deposit Survey (MDS) prior to the 24 August 2016 expiry date to extend the tenement life for up to an additional 6 years.
			37.05	128.8				
			37.03333	128.8				
			37.03333	128.7833				
Uguchi	Seobyek129		37.03333	128.7833	GRS80	100%	24-Aug-16	Tenement application filed on 25 February 2016. SMCL must lodge a Mineral Deposit Survey (MDS) prior to the 24 August 2016 expiry date to extend the tenement life for up to an additional 6 years.
			37.03333	128.8				
			30.016667	128.8				
			37.016667	128.7833				
Uguchi	Seobyek130		37.016667	128.7833	GRS80	100%	24-Aug-16	Tenement application filed on 25 February 2016. SMCL must lodge a Mineral Deposit Survey (MDS) prior to the 24 August 2016 expiry date to extend the tenement life for up to an additional 6 years.
			37.016667	128.8				
			37	128.8				
			37	128.7833				
Uguchi	Seobyek137		37.066667	128.7667	GRS80	100%	24-Aug-16	Tenement application filed on 25 February 2016. SMCL must lodge a Mineral Deposit Survey (MDS) prior to the 24 August 2016 expiry date to extend the tenement life for up to an additional 6 years.
			37.066667	128.7833				
			37.05	128.7833				
			37.05	128.7667				
Uguchi	Seobyek138		37.05	128.7667	GRS80	100%	24-Aug-16	Tenement application filed on 25 February 2016. SMCL must lodge a Mineral Deposit Survey (MDS) prior to the 24 August 2016 expiry date to extend the tenement life for up to an additional 6 years.
			37.05	128.7833				
			37.03333	128.7833				
			37.03333	128.7667				
Uguchi	Seobyek139		37.03333	128.7667	GRS80	100%	24-Aug-16	Tenement application filed on 25 February 2016. SMCL must lodge a Mineral Deposit Survey (MDS)
			37.03333	128.7833				

Deposit	Mine Land Ledger No.	Minin g	Title Coordinate		Grid System	PSM Holding %	Expiry Date	Notes
			30.016667	128.7833				prior to the 24 August 2016 expiry date to extend the tenement life for up to an additional 6 years.
			37.016667	128.7667				
			37.016667	128.7667				
Uguchi	Seobyeok140		37.016667	128.7833	GRS80	100%	24-Aug-16	Tenement application filed on 25 February 2016. SMCL must lodge a Mineral Deposit Survey (MDS) prior to the 24 August 2016 expiry date to extend the tenement life for up to an additional 6 years.
			37	128.7833				
			37	128.7667				
Uguchi	Seobyeok147		37.066667	128.75	GRS80	100%	24-Aug-16	Tenement application filed on 25 February 2016. SMCL must lodge a Mineral Deposit Survey (MDS) prior to the 24 August 2016 expiry date to extend the tenement life for up to an additional 6 years.
			37.066667	128.7667				
			37.05	128.7667				
			37.05	128.75				
Uguchi	Seobyeok149		37.03333	128.75	GRS80	100%	24-Aug-16	Tenement application filed on 25 February 2016. SMCL must lodge a Mineral Deposit Survey (MDS) prior to the 24 August 2016 expiry date to extend the tenement life for up to an additional 6 years.
			37.03333	128.7667				
			30.016667	128.7667				
			37.016667	128.75				
Uguchi	Seobyeok150		37.016667	128.75	GRS80	100%	24-Aug-16	Tenement application filed on 25 February 2016. SMCL must lodge a Mineral Deposit Survey (MDS) prior to the 24 August 2016 expiry date to extend the tenement life for up to an additional 6 years.
			37.016667	128.7667				
			37	128.7667				
			37	128.75				

Rule 5.5

Appendix 5B

Mining exploration entity and oil and gas exploration entity quarterly report

Introduced 01/07/96 Origin Appendix 8 Amended 01/07/97, 01/07/98, 30/09/01, 01/06/10, 17/12/10, 01/05/2013

Name of entity

Peninsula Mines Limited

ABN

56 123 102 974

Quarter ended ("current quarter")

31 March 2016

Consolidated statement of cash flows

		Current quarter \$A'ooo	Year to date (9 months) \$A'ooo
Cash flows related to operating activities			
1.1	Receipts from product sales and related debtors		
1.2	Payments for (a) exploration & evaluation (b) development (c) production (d) administration	(70) (48)	(269) (198)
1.3	Dividends received		
1.4	Interest and other items of a similar nature received	1	2
1.5	Interest and other costs of finance paid		
1.6	Income taxes paid		
1.7	Other (provide details if material)	(40)	33
Net Operating Cash Flows		(157)	(432)
Cash flows related to investing activities			
1.8	Payment for purchases of: (a) prospects (b) equity investments (c) other fixed assets	- -	- -
1.9	Proceeds from sale of: (a) prospects (b) equity investments (c) other fixed assets	- -	- -
1.10	Loans to other entities		
1.11	Loans repaid by other entities		
1.12	Other (provide details if material)		
Net investing cash flows		-	-
1.13	Total operating and investing cash flows (carried forward)	(157)	(432)

+ See chapter 19 for defined terms.

Appendix 5B

Mining exploration entity and oil and gas exploration entity quarterly report

1.13	Total operating and investing cash flows (brought forward)	(157)	(432)
	Cash flows related to financing activities		
1.14	Proceeds from issues of shares, options, etc.	1,201	1,507
1.15	Proceeds from sale of forfeited shares		
1.16	Proceeds from borrowings	-	150
1.17	Repayment of borrowings		
1.18	Dividends paid		
1.19	Other (provide details if material)	(78)	(81)
	Net financing cash flows	1,123	1,576
	Net increase (decrease) in cash held	966	1,144
1.20	Cash at beginning of quarter/year to date	347	169
1.21	Exchange rate adjustments to item 1.20	-	-
1.22	Cash at end of quarter	1,313	1,313

Payments to directors of the entity, associates of the directors, related entities of the entity and associates of the related entities

		Current quarter \$A'000
1.23	Aggregate amount of payments to the parties included in item 1.2	8
1.24	Aggregate amount of loans to the parties included in item 1.10	-

1.25 Explanation necessary for an understanding of the transactions

Item 1.7: Includes \$72k funding of drilling costs by KORES (Korea Resources Corporation, a South Korean Government authority). \$39k was subsequently returned when drilling plans were altered.

Item 3.1: Major shareholder Aurora Minerals Ltd provided a working capital facility of \$50,000 per month, to the end of September 2015.

Item 1.14: Represents part proceeds of capital raising announced during the quarter. Balance of \$381,508 was the subject of shareholder approval which was granted at a General Meeting held on 28 April 2016.

Item 1.23: All directors agreed to forego remuneration, including termination fees, from 1 July 2015 to conserve cash within Peninsula. Payment of fees will resume from 1 April 2016, following the completion of the recent capital raising. Mr D Noonan was appointed director on 22 February 2016, and his fees are included in 1.23 from that date.

Non-cash financing and investing activities

2.1 Details of financing and investing transactions which have had a material effect on consolidated assets and liabilities but did not involve cash flows

--

+ See chapter 19 for defined terms.

- 2.2 Details of outlays made by other entities to establish or increase their share in projects in which the reporting entity has an interest

--

Financing facilities available

Add notes as necessary for an understanding of the position.

	Amount available \$A'000	Amount used \$A'000
3.1 Loan facilities	-	-
3.2 Credit standby arrangements		

Estimated cash outflows for next quarter

	\$A'000
4.1 Exploration and evaluation	205
4.2 Development	
4.3 Production	
4.4 Administration	80
Total	285

Reconciliation of cash

Reconciliation of cash at the end of the quarter (as shown in the consolidated statement of cash flows) to the related items in the accounts is as follows.	Current quarter \$A'000	Previous quarter \$A'000
5.1 Cash on hand and at bank	86	103
5.2 Deposits at call	1,227	244
5.3 Bank overdraft		
5.4 Other (provide details)		
Total: cash at end of quarter (item 1.22)	1,313	347

+ See chapter 19 for defined terms.

Changes in interests in mining tenements and petroleum tenements

	Tenement reference and location	Nature of interest (note (2))	Interest at beginning of quarter	Interest at end of quarter
6.1	Interests in mining tenements and petroleum tenements relinquished, reduced or lapsed			
6.2	Interests in mining tenements and petroleum tenements acquired or increased			

Issued and quoted securities at end of current quarter

Description includes rate of interest and any redemption or conversion rights together with prices and dates.

	Total number	Number quoted	Issue price per security (see note 3) (cents)	Amount paid up per security (see note 3) (cents)
7.1	Preference securities (description)			
7.2	Changes during quarter (a) Increases through issues (b) Decreases through returns of capital, buy-backs, redemptions			
7.3	+Ordinary securities	375,466,140	375,466,140	Fully Paid
7.4	Changes during quarter (a) Increases through issues (b) Decreases through returns of capital, buy-backs	75,093,225	75,093,225	1.6 cents Fully Paid
7.5	+Convertible debt securities (description)			

+ See chapter 19 for defined terms.

Appendix 5B

Mining exploration entity and oil and gas exploration entity quarterly report

7.6	Changes during quarter (a) Increases through issues (b) Decreases through securities matured, converted				
7.7	Options (description and conversion factor)	8,000,000 10,000,000 8,100,000 44,720,000 15,276,000 1,000,000	- - - - - -	<i>Exercise price</i> 40.0 cents 40.0 cents 4.57 cents 0.5 cents 0.5 cents 0.5 cents	<i>Expiry date</i> 17/05/2017 22/06/2017 22/08/2016 20/09/2017 30/11/2017 30/11/2018
7.8	Issued during quarter				
7.9	Exercised during quarter				
7.10	Expired during quarter				
7.11	Debentures (totals only)				
7.12	Unsecured notes (totals only)				

Compliance statement

- 1 This statement has been prepared under accounting policies which comply with accounting standards as defined in the Corporations Act or other standards acceptable to ASX (see note 5).
- 2 This statement does ~~does not~~* (delete one) give a true and fair view of the matters disclosed.



Sign here:
(Company secretary)

Date: 29 April 2016

Print name: Eric Moore

Notes

+ See chapter 19 for defined terms.

Appendix 5B

Mining exploration entity and oil and gas exploration entity quarterly report

- 1 The quarterly report provides a basis for informing the market how the entity's activities have been financed for the past quarter and the effect on its cash position. An entity wanting to disclose additional information is encouraged to do so, in a note or notes attached to this report.
- 2 The "Nature of interest" (items 6.1 and 6.2) includes options in respect of interests in mining tenements and petroleum tenements acquired, exercised or lapsed during the reporting period. If the entity is involved in a joint venture agreement and there are conditions precedent which will change its percentage interest in a mining tenement or petroleum tenement, it should disclose the change of percentage interest and conditions precedent in the list required for items 6.1 and 6.2.
- 3 **Issued and quoted securities** The issue price and amount paid up is not required in items 7.1 and 7.3 for fully paid securities.
- 4 The definitions in, and provisions of, *AASB 6: Exploration for and Evaluation of Mineral Resources* and *AASB 107: Statement of Cash Flows* apply to this report.
- 5 **Accounting Standards** ASX will accept, for example, the use of International Financial Reporting Standards for foreign entities. If the standards used do not address a topic, the Australian standard on that topic (if any) must be complied with.

== == == == ==

+ See chapter 19 for defined terms.