

*and Queensland's*

Unlocking Victoria's Copper-Gold  
Potential:  
multiple drill-ready discovery  
opportunities and significant  
Government funding!

Noosa Mining Conference  
21 July 2016



## Disclaimer

This presentation contains only an overview of Stavely Minerals Limited ("Stavely" or the "Company") and its activities and operations. The contents of this presentation, including matters relating to the geology and exploration potential of the Company's projects, may rely on various assumptions and subjective interpretations which it is not possible to detail in this presentation and which have not been subject to any independent verification.

This presentation contains a number of forward-looking statements. Known and unknown risks and uncertainties, and factors outside of the Company's control, may cause the actual results, performance and achievements of the Company to differ materially from those expressed or implied in this presentation.

To the maximum extent permitted by law, Stavely does not warrant the accuracy, currency or completeness of the information in this presentation, nor the future performance of the Company, and will not be responsible for any loss or damage arising from the use of the information.

The information contained in this presentation is not a substitute for detailed investigation or analysis of any particular issue. Current and potential investors should seek independent advice before making any investment decision in regard to the Company or its activities.

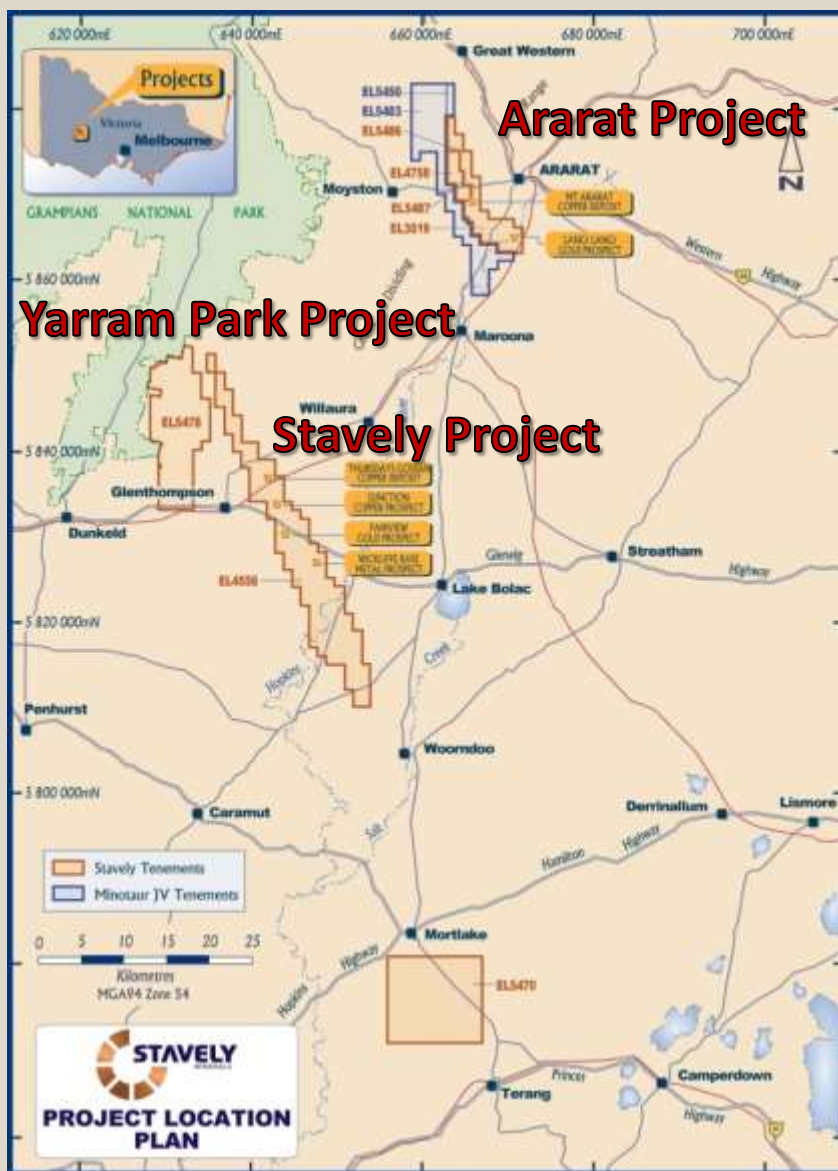




# PROJECTS



# VICTORIAN PROJECT LOCATIONS



## Victorian Projects

**The Ararat Project** is prospective for VMS base metals-gold and 'Stawell-style' gold mineralisation.

**The Stavelly Project** is prospective for ancient porphyry copper-gold, VMS base metals-gold and intrusive related gold mineralisation.

**The Yarram Park Project** is prospective for ancient porphyry copper-gold and intrusive related gold mineralisation.



# QUEENSLAND PROJECT LOCATION



## Queensland Project

The Ravenswood Project is prospective for porphyry copper-moly-gold, quartz-sulphide vein-hosted gold and breccia-hosted gold mineralisation.



At the **Ararat Project**, hosted in a Besshi-style VMS:

- Inferred Mineral Resources of 1.3Mt at 2.0% copper, 0.5 g/t gold, 0.4% zinc and 6 g/t silver for 30kt of contained copper

At the **Stavely Project** hosted in a secondary chalcocite-enriched blanket:

- Inferred Mineral Resources of 28Mt at 0.4% copper for 110kt of contained copper

<sup>1</sup> reported in compliance with JORC 2012, see ASX announcement 8 September 2015 and available from [www.stavely.com.au](http://www.stavely.com.au)



# THURSDAY'S GOSSAN CHALCOCITE 'BLANKET'



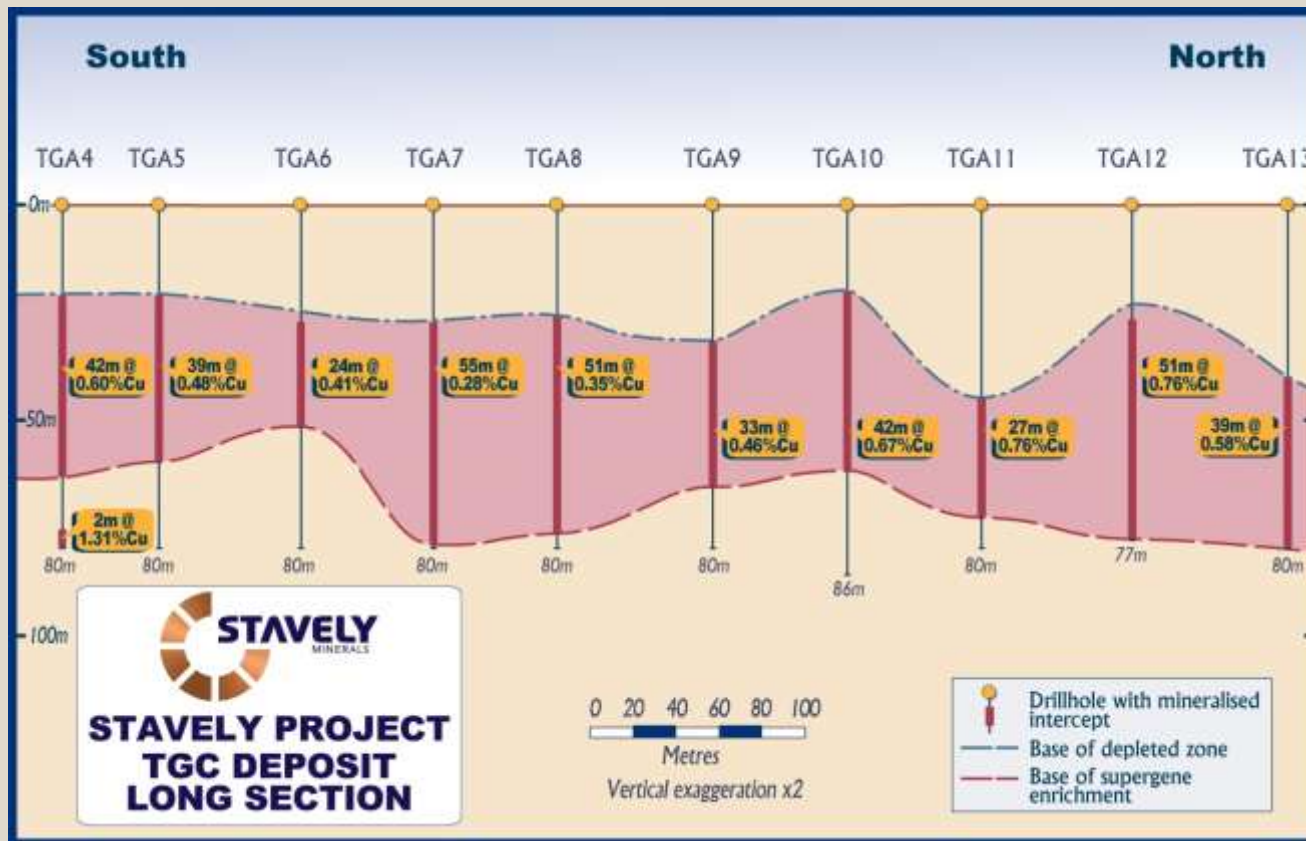
# ARARAT PROJECT



Inferred Mineral Resources of **28Mt** at **0.4% copper** for 110kt of contained copper



# ARARAT PROJECT



Conceptual Study provided sufficiently positive economic outcomes to progress to a Scoping Study<sup>1</sup>

<sup>1</sup> see ASX announcement 19 July 2016 and available from [www.stavely.com.au](http://www.stavely.com.au)



# ARARAT PROJECT



Conceptual Study provided sufficiently positive economic outcomes to progress to a Scoping Study<sup>1</sup>

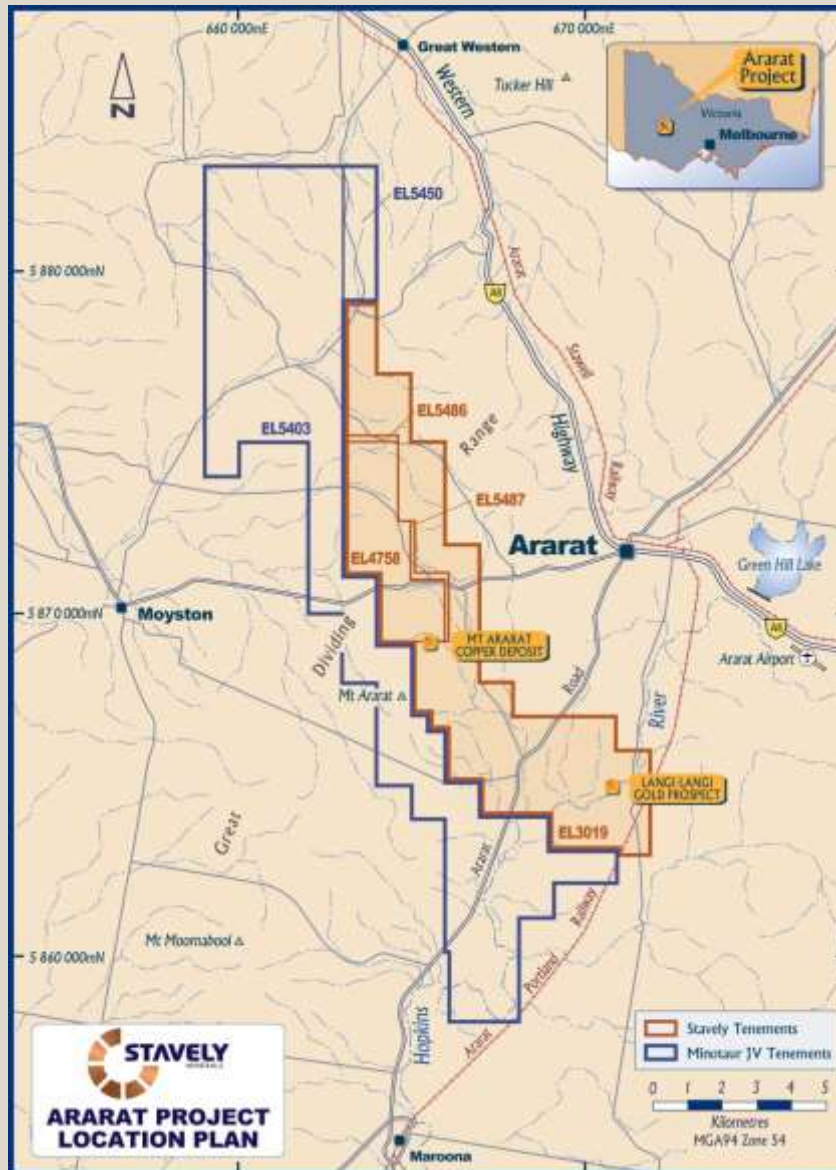
<sup>1</sup> see ASX announcement 19 July 2016 and available from [www.stavely.com.au](http://www.stavely.com.au)



# ARARAT PROJECT



# ARARAT PROJECT



## The Ararat Project

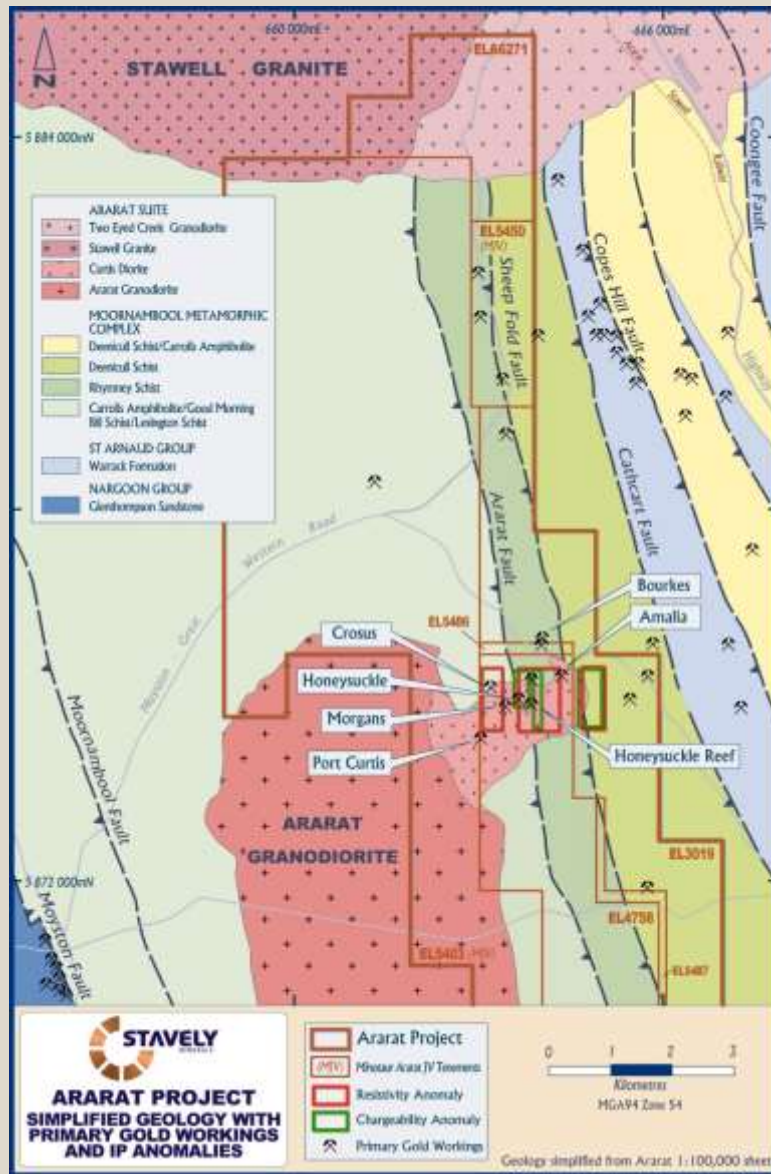
Hosts the:

Mt Ararat Besshi-style  
copper-gold VMS

and 'Stawell-style' gold  
targets



# ARARAT PROJECT

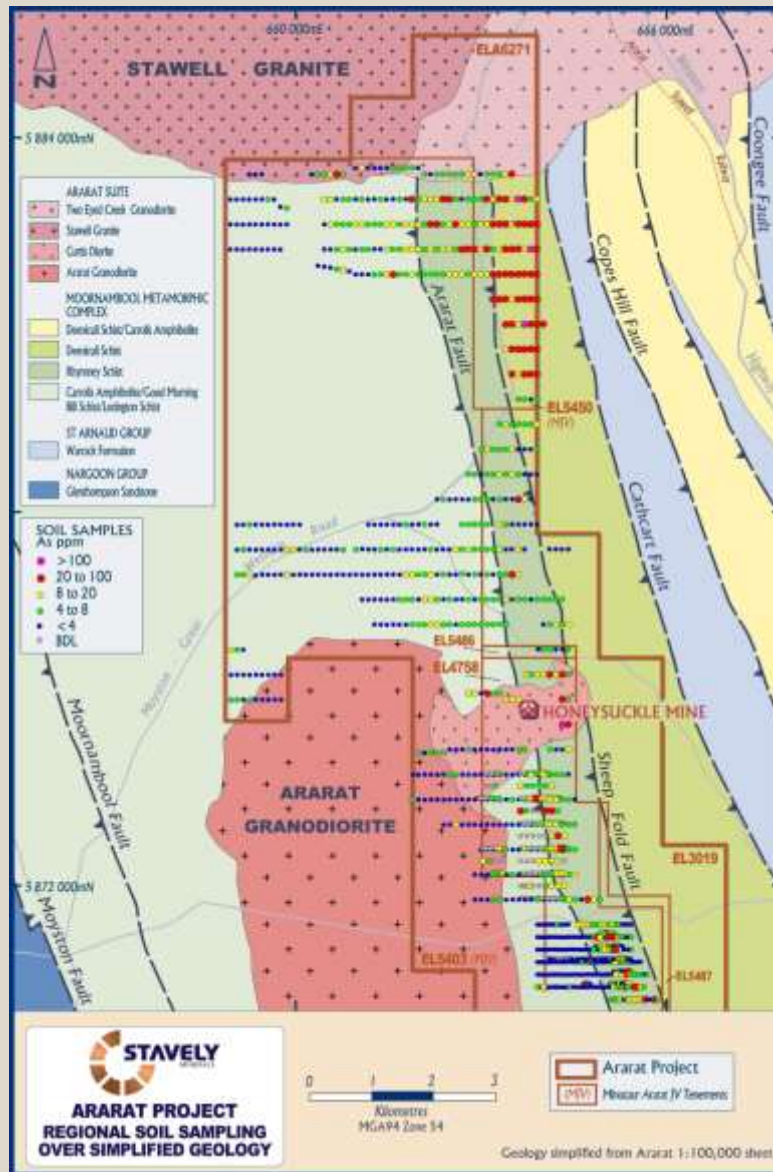


## Port Curtis Goldfield

- ✓ Historic gold mines hosted in late-stage granite
- ✓ Recent IP geophysics has identified a number of chargeability / resistivity anomalies
- ✓ Surface rock chips to 5.33 g/t gold



# ARARAT PROJECT



## Stawell Granite South

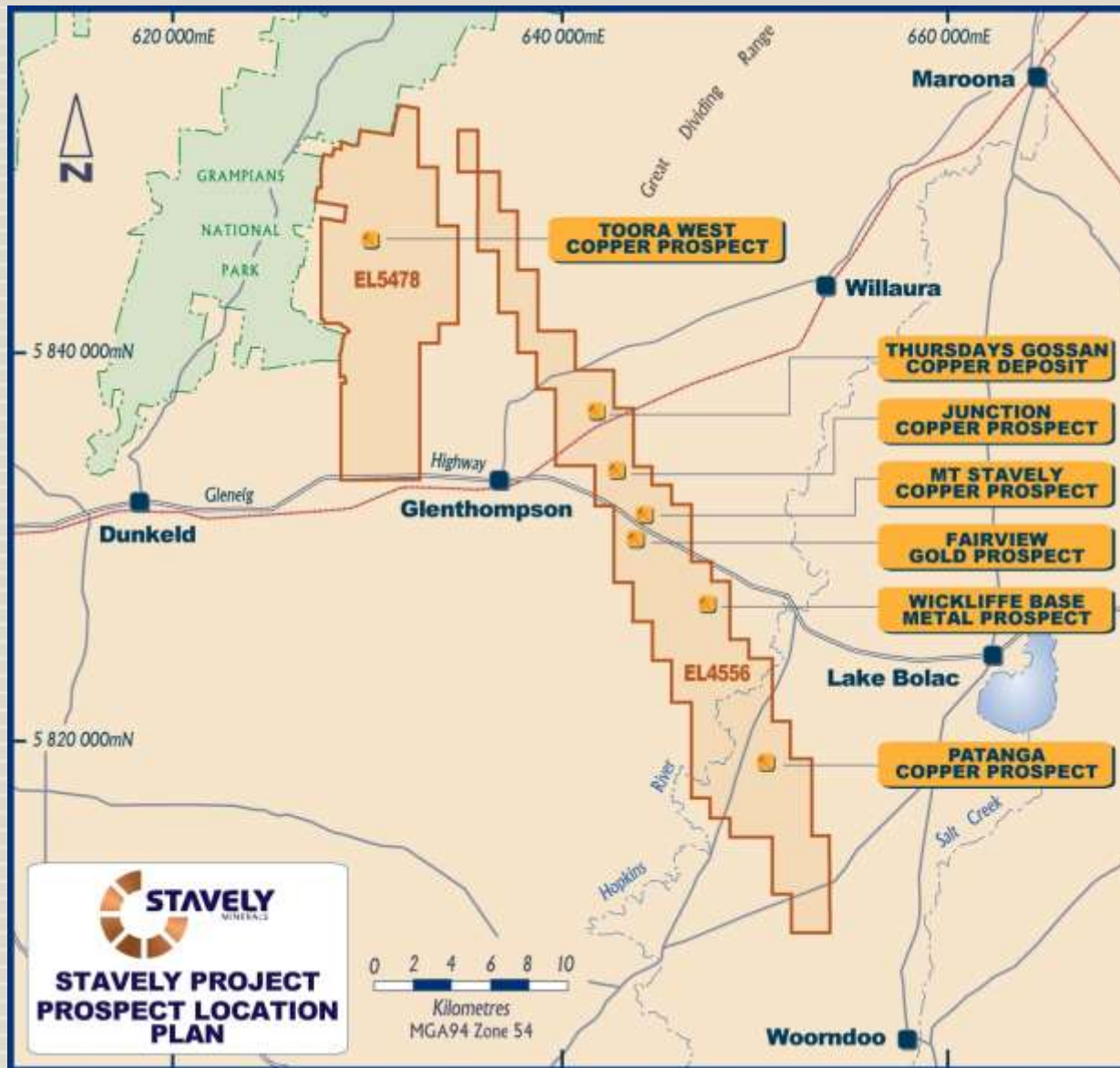
- ✓ Recent soil geochemistry has identified a 2.8km long arsenic anomaly with gold anomalism to 0.24g/t gold
- ✓ Historic gold mines Plantagenet, New Hope and Goldburra Mines.
- ✓ Mirror image of the Stawell Gold Mine on the north side of the Stawell Granite



# STAVELY AND YARRAM PARK PROJECTS



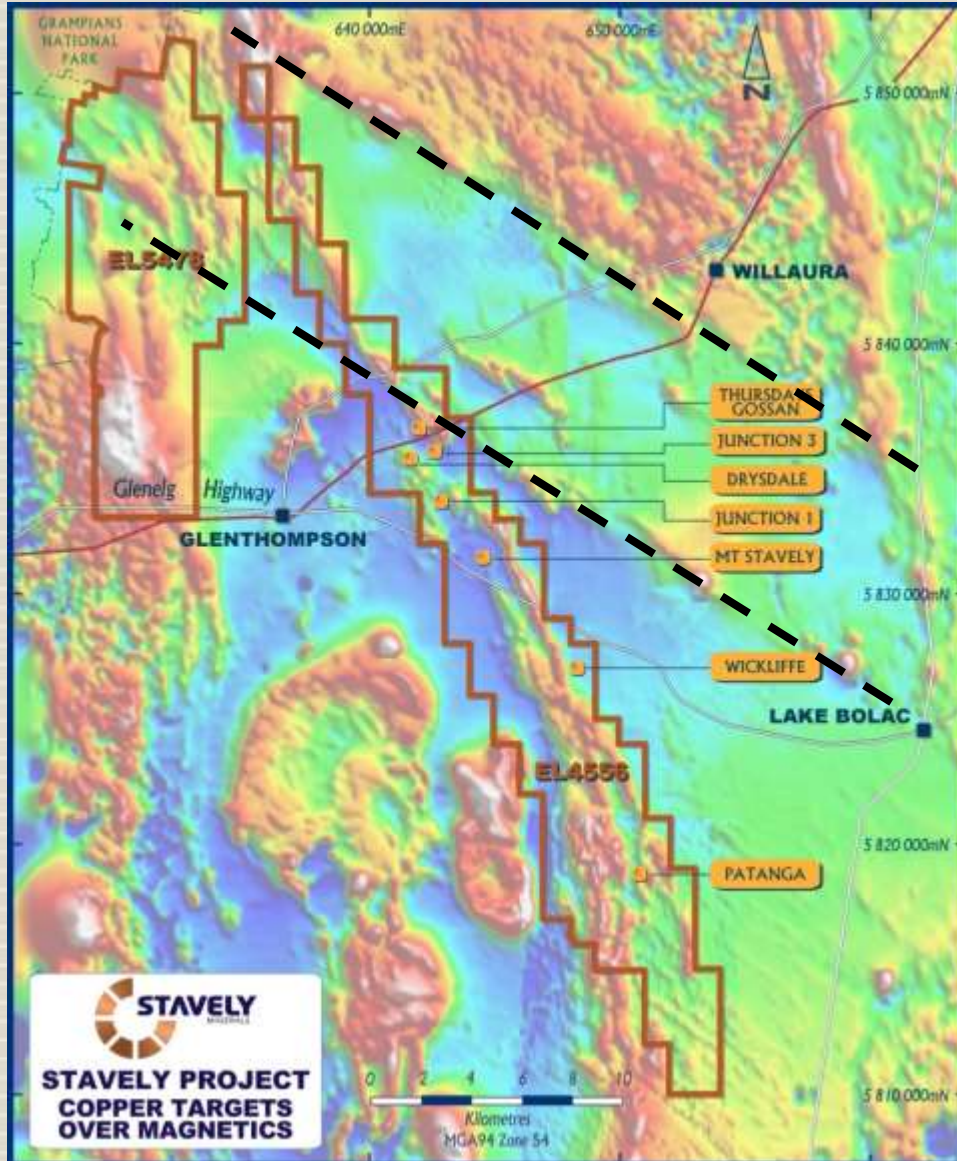
# STAVELY AND YARRAM PARK PROJECTS



- Thursday's Gossan chalcocite enriched blanket – Inferred Mineral Resource of **28Mt at 0.4% copper** containing 110kt copper
- Thursday's Gossan porphyry
- Junction porphyry
- Mount Stavely porphyry
- Fairview Gold prospect
- Wickliffe VMS prospect
- Patanga copper prospect
- Toora West porphyry prospect



# STAVELY AND YARRAM PARK PROJECTS



## Stavely Volcanic Arc

Similar structural setting to Cadia Valley

- ~N-S trending volcanic belt
- Major NW trending structures



# STAVELY PROJECT

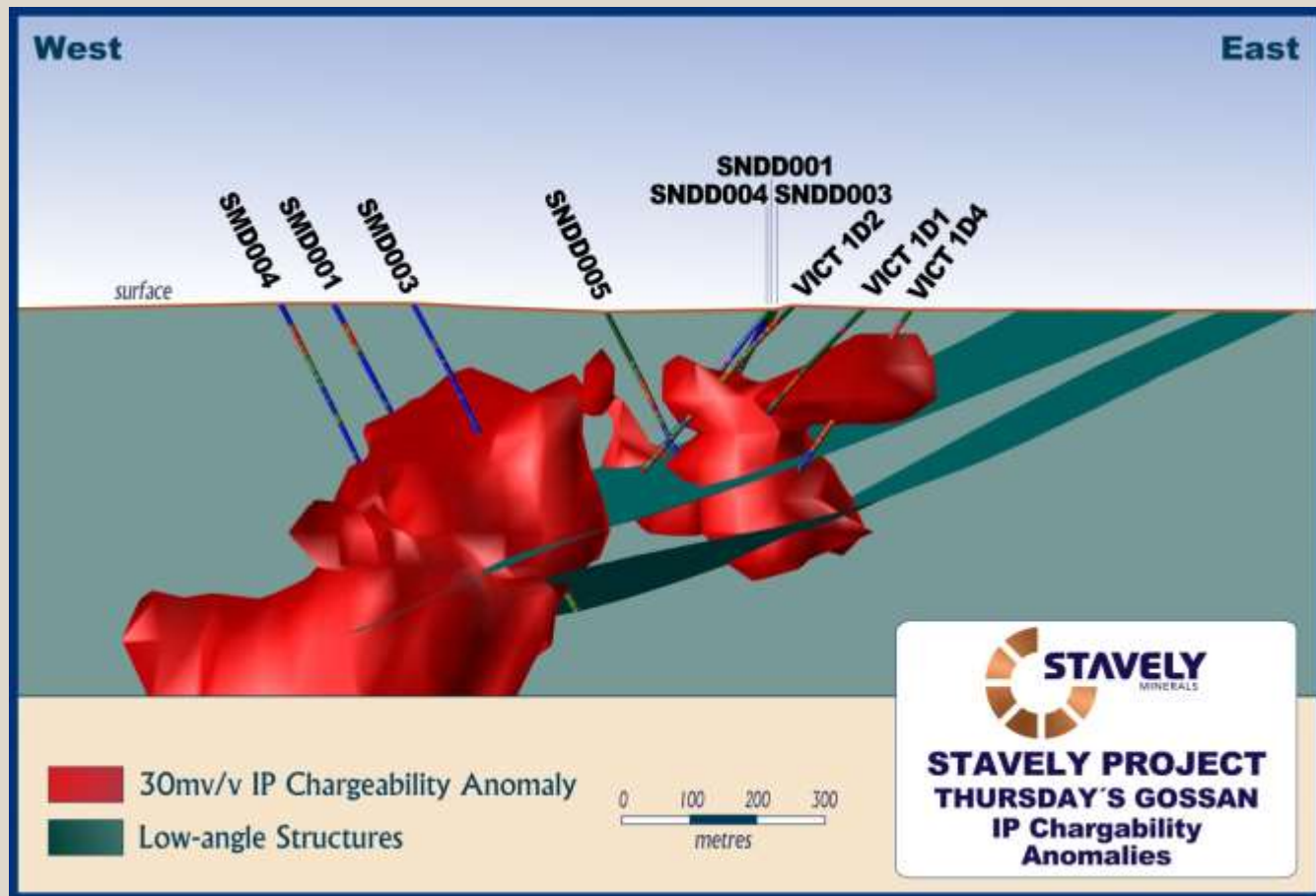


## Thursday's Gossan Porphyry

Stavely Minerals drilled 3 deep diamond drill holes (between 532m to 640m deep) into an induced polarisation (IP) chargeability anomaly



# STAVELY PROJECT



## Thursday's Gossan Porphyry

Drilling intercepted well-developed phyllic alteration (sericite-pyrite) which corresponded well with the IP chargeability anomaly

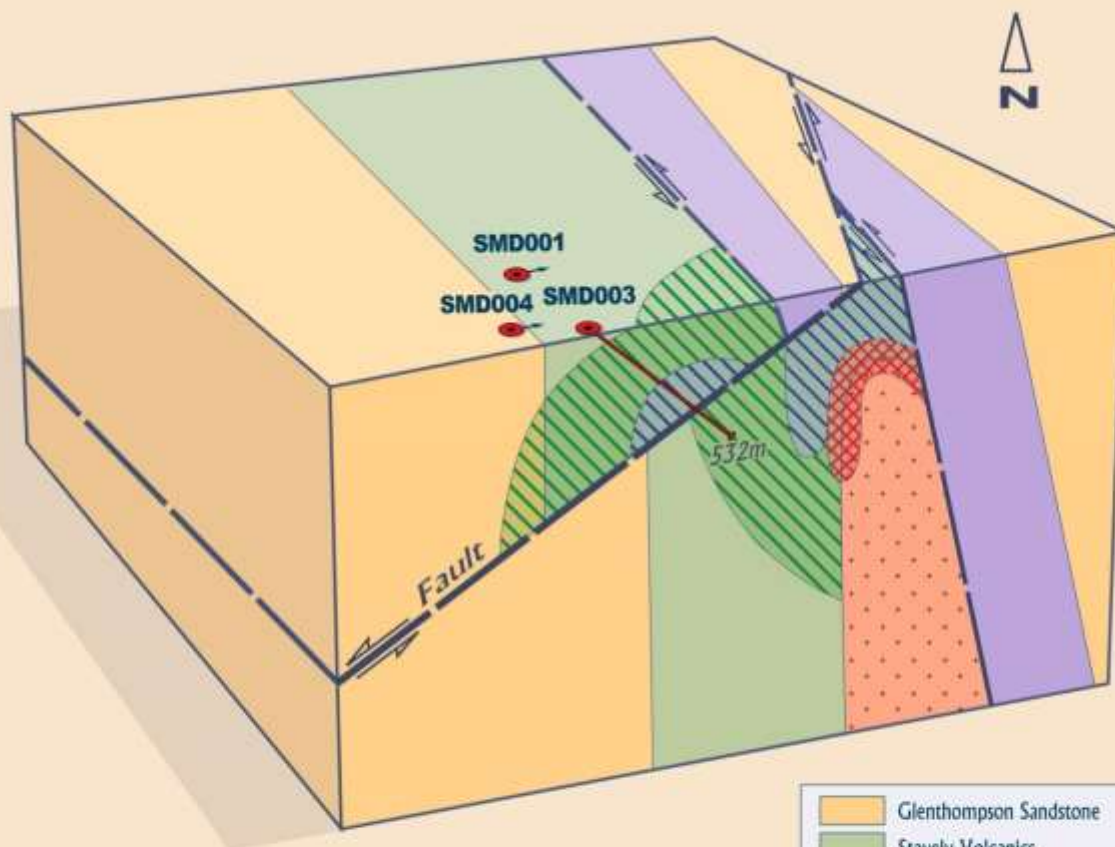


# STAVELY PROJECT

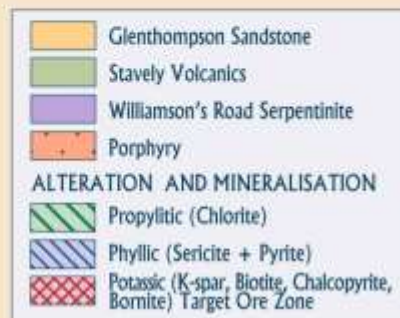


## Thursday's Gossan Porphyry

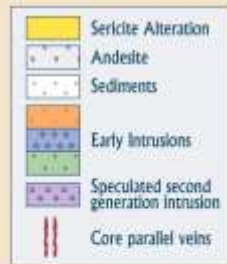
The three deep diamond drill holes identified a low-angle structural offset to the porphyry system



not to scale



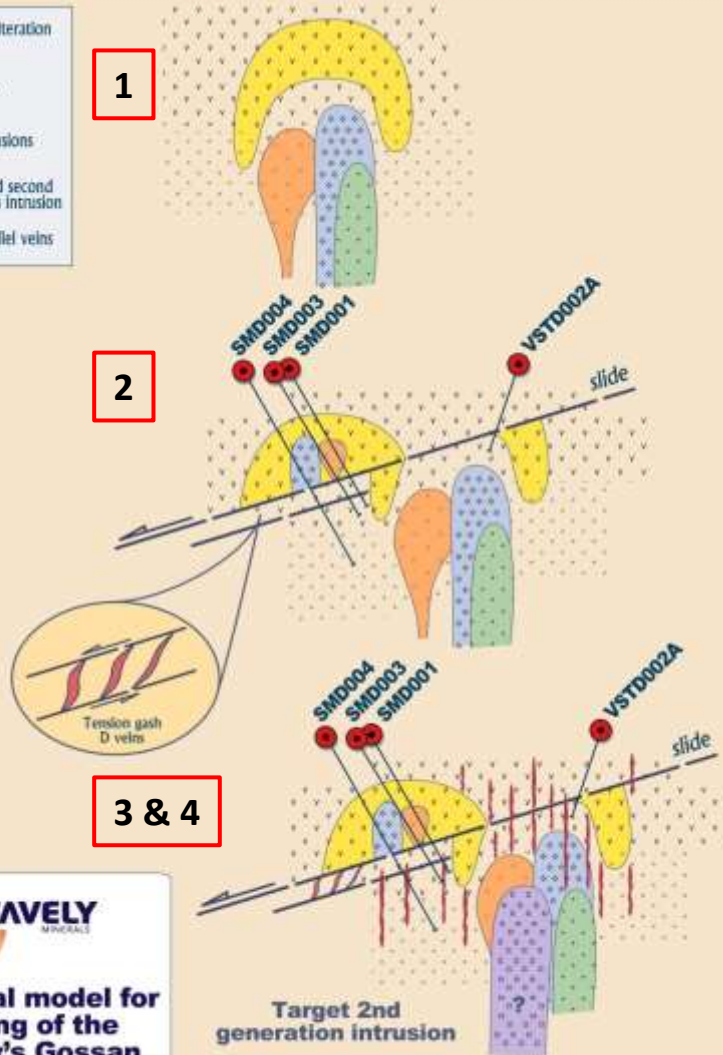




1

2

3 & 4



not to scale

(after Corbett, 2014)

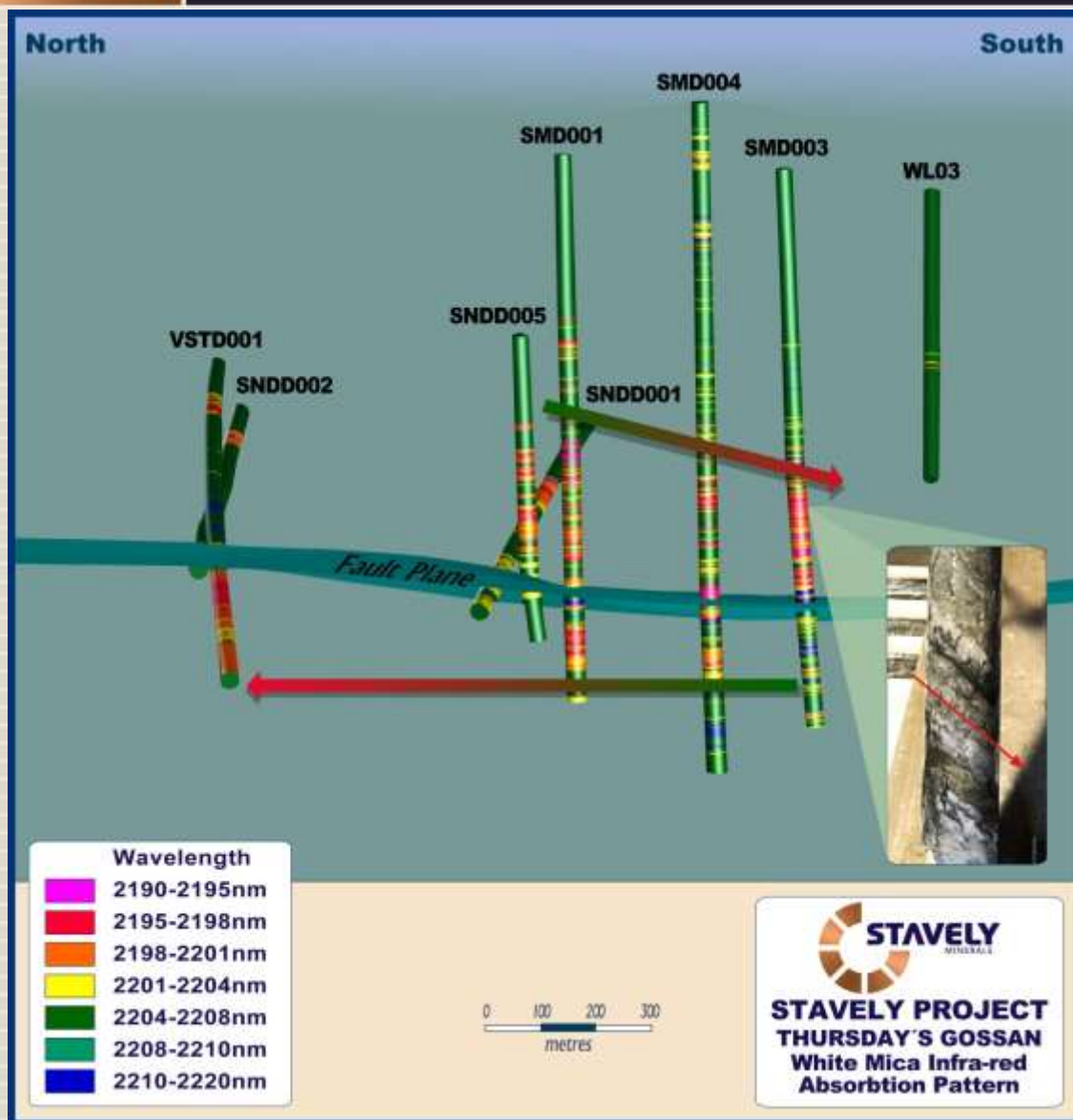
## Thursday's Gossan Porphyry

Interpreted evolution of the porphyry system:

1. Emplacement of early porphyry phases and incipient copper mineralisation
2. Low angle structural unroofing
3. Resurgent second-phase intrusion
4. High-grade copper-gold mineralisation



# STAVELY PROJECT



## Thursday's Gossan Porphyry The Science

Structural analysis, kinematic indicators, white mica shortwave infra-red absorption features and sulphur isotope results all concur the porphyry 'core' has been transposed north and east beneath the structural zone.

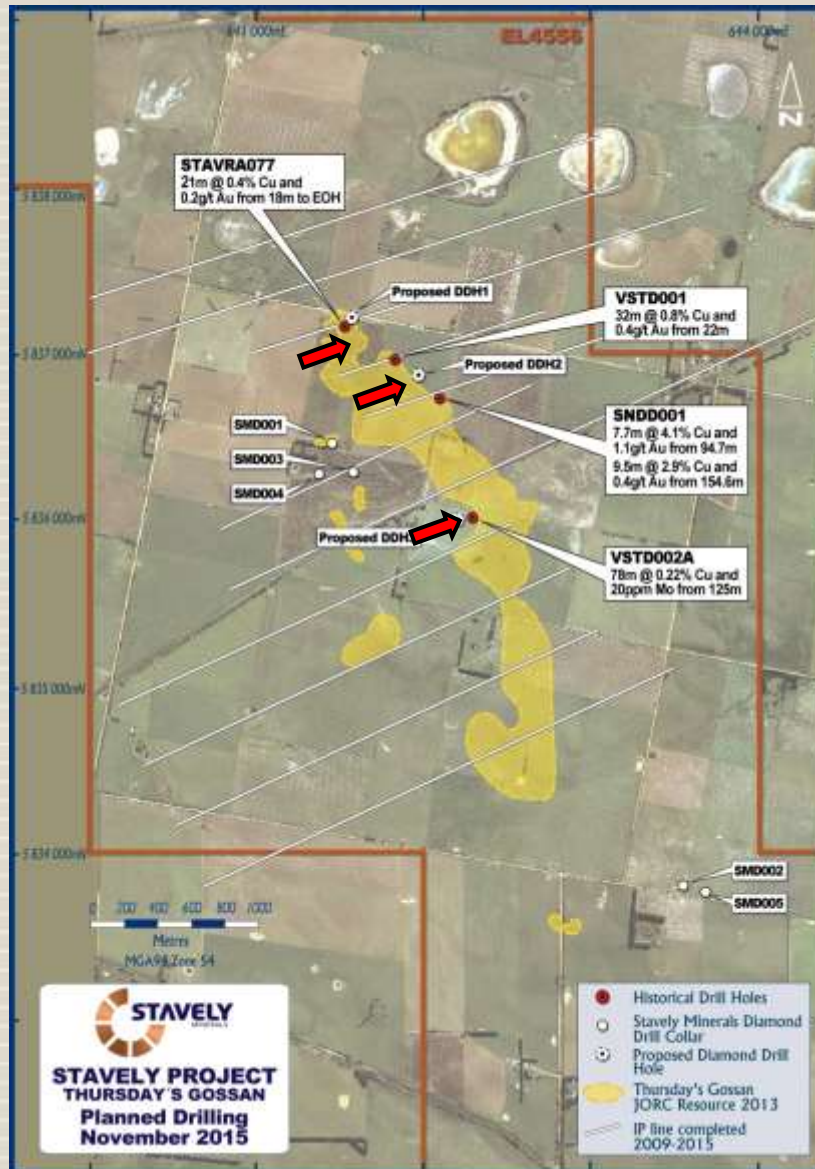
## What do investors need to take from this?

The target porphyry 'core' is yet to be discovered and we believe we have strong evidence indicating where it has gone.

<sup>1</sup> see ASX announcement dated 12 May 2014 and available from [www.stavely.com.au](http://www.stavely.com.au)



# STAVELY PROJECT



## Thursday's Gossan Porphyry

- ✓ Recently announced Victorian Government co-funding
  - 2 lines x IP geophysics
  - 3 x diamond drill holes
- ✓ 2 x drill holes targeting beneath the structure best gold-copper intercepts:
  - 21m at 0.4% copper and 0.2g/t gold
  - 32m at 0.8% copper and 0.4g/t gold
  - 7.7m at 4.1% copper and 1.1g/t gold
  - 9.5m at 2.9% copper and 0.4g/t gold
- ✓ 3<sup>rd</sup> drill hole targeting strong copper-moly anomaly

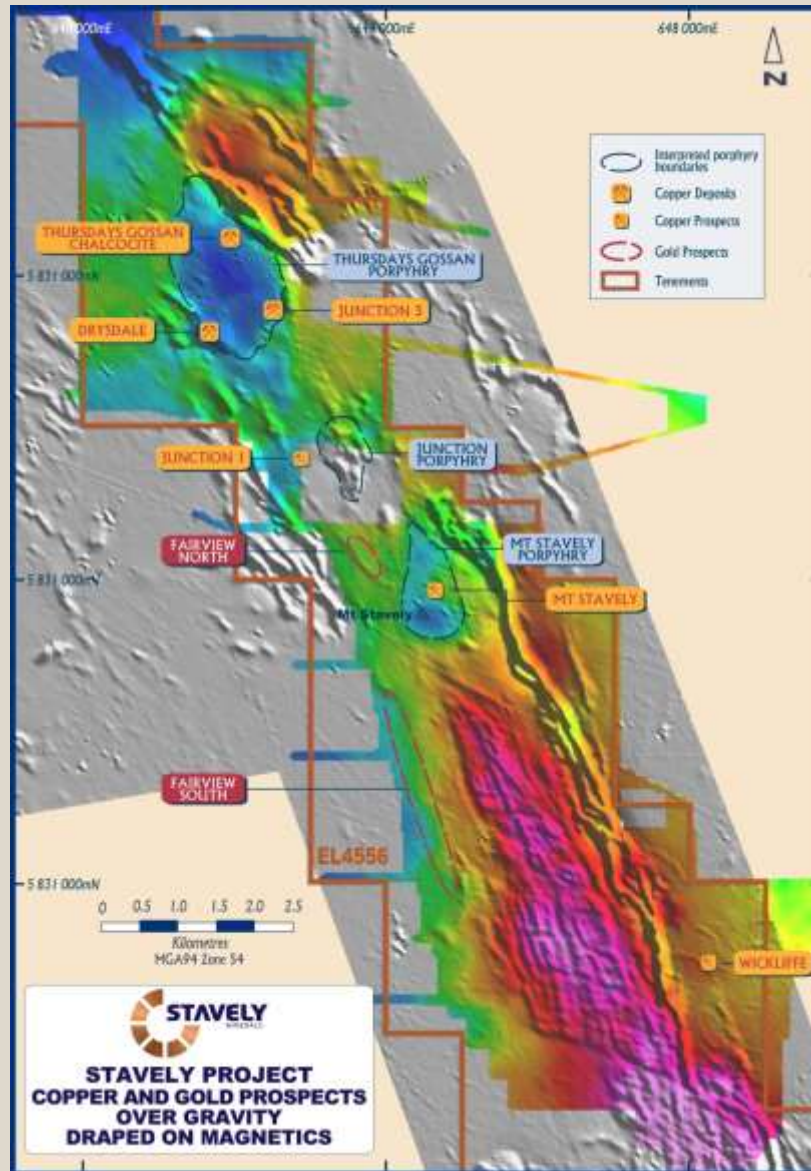




# MOUNT STAVELY AND FAIRVIEW



# STAVELY PROJECT

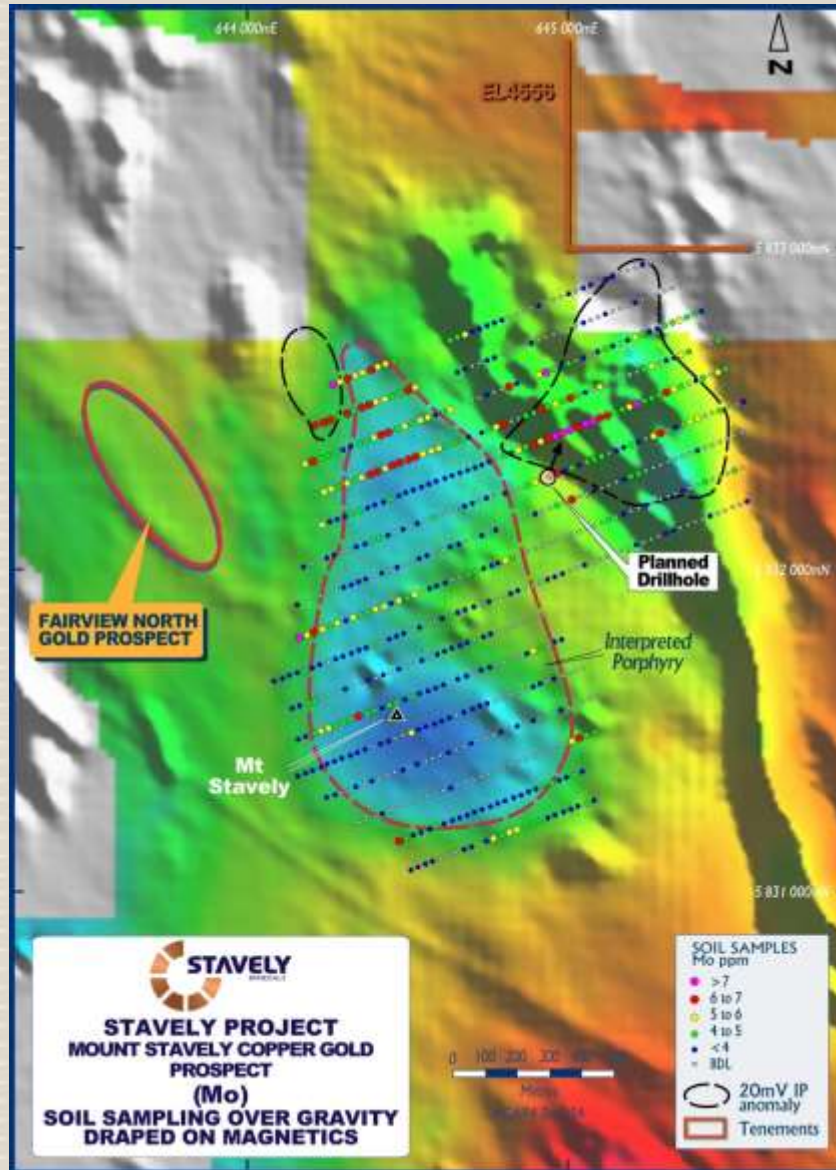


## Mount Stavelly Porphyry and Fairview Gold

- ✓ Interpreted buried porphyry reflected in pronounced gravity low
- ✓ 5km of peripheral mesothermal to epithermal gold associated with quartz-sulphide veins (adularia noted)



# STAVELY PROJECT

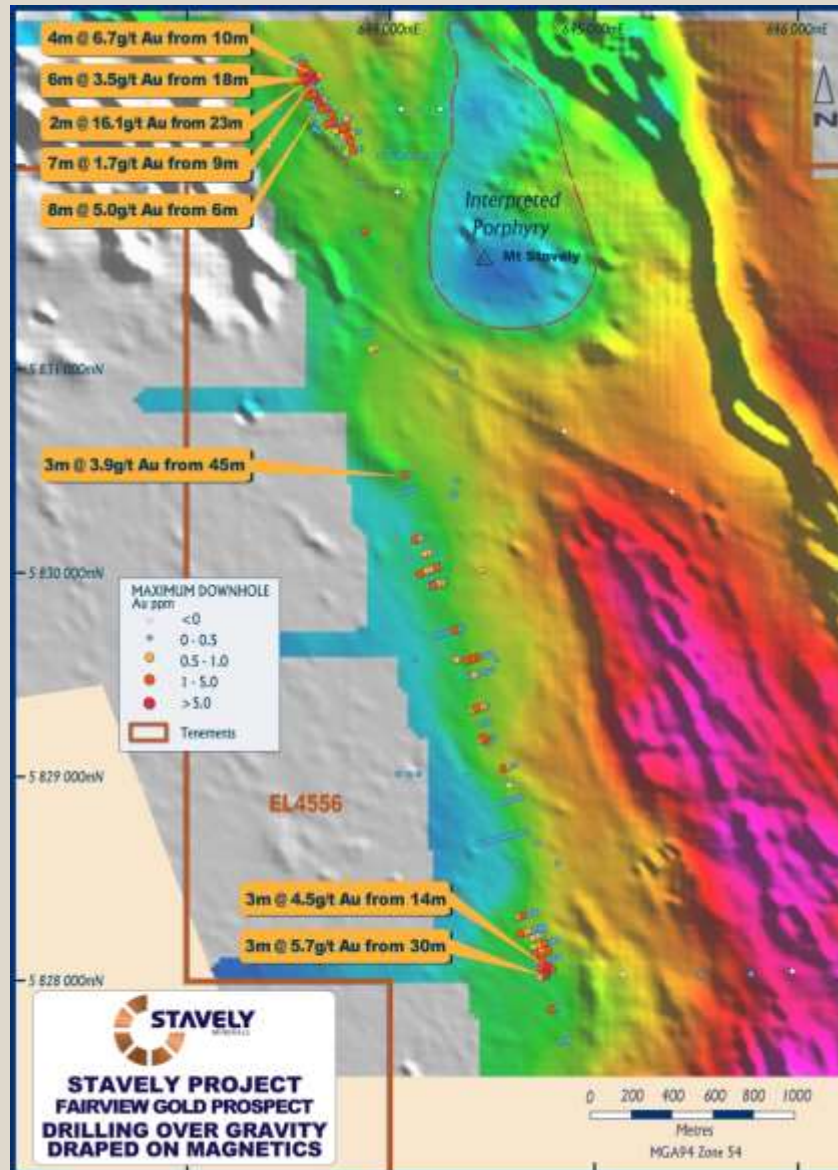


## Mount Stavely Porphyry

- ✓ Inferred buried porphyry reflected in pronounced gravity low
- ✓ IP chargeability anomaly on NE margin
- ✓ Coincident molybdenum soil geochemistry anomaly (should indicate the centre of porphyry-style mineralisation)
- ✓ Also highest gold result at 49ppb
- ✓ **Victorian Government co-funding for one diamond drill hole to test, previously undrilled**



# STAVELY PROJECT

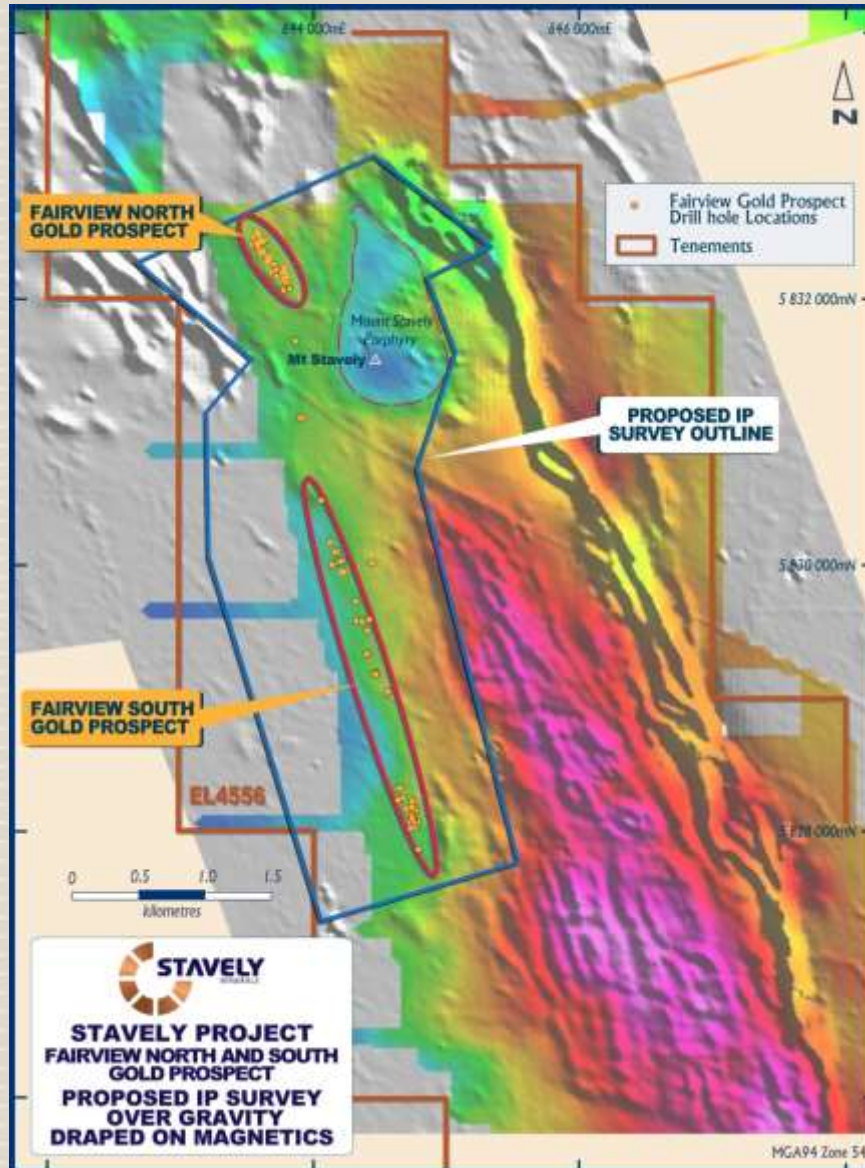


## Fairview Gold Prospect

- ✓ 5km strike of mesothermal to epithermal quartz-sulphide vein related gold mineralisation
- ✓ Previous drilling intercepts including:
  - **2.5m at 17.4 g/t gold** from 28m drill depth
  - **2m at 16.1 g/t gold** from 23m drill depth
  - **4m at 6.7 g/t gold** from 10m drill depth
  - **8m at 5.0 g/t gold** from 6m drill depth



# STAVELY PROJECT



## Fairview Gold Prospect

- ✓ Interpreted that the Fairview gold mineralisation is related to buried porphyry at Mount Stavelly
- ✓ Similar setting to Lake Cowal
- ✓ **Victorian Government co-funding for 17 x 2km IP geophysical lines**

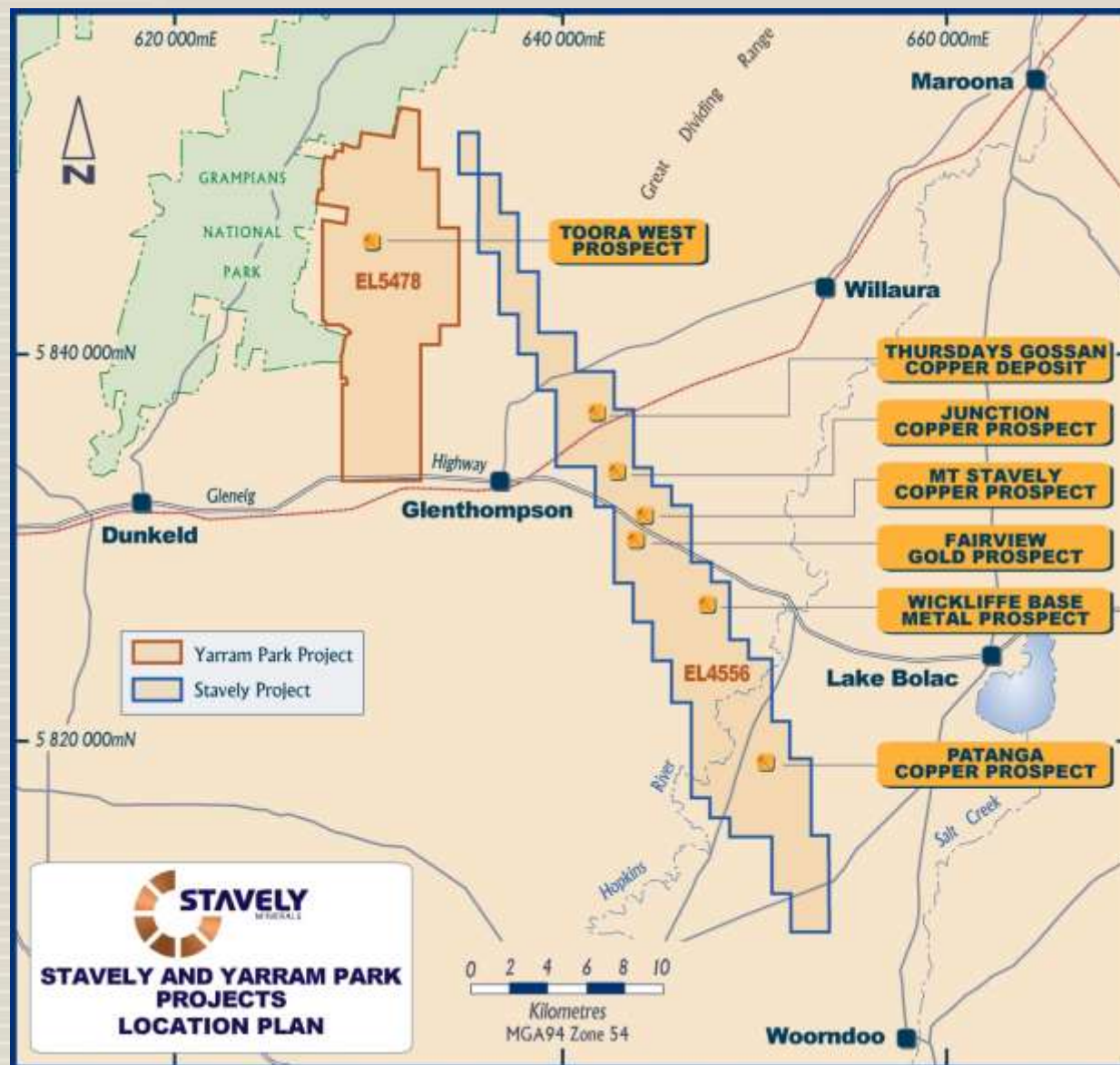




# YARRAM PARK



# YARRAM PARK PROJECT

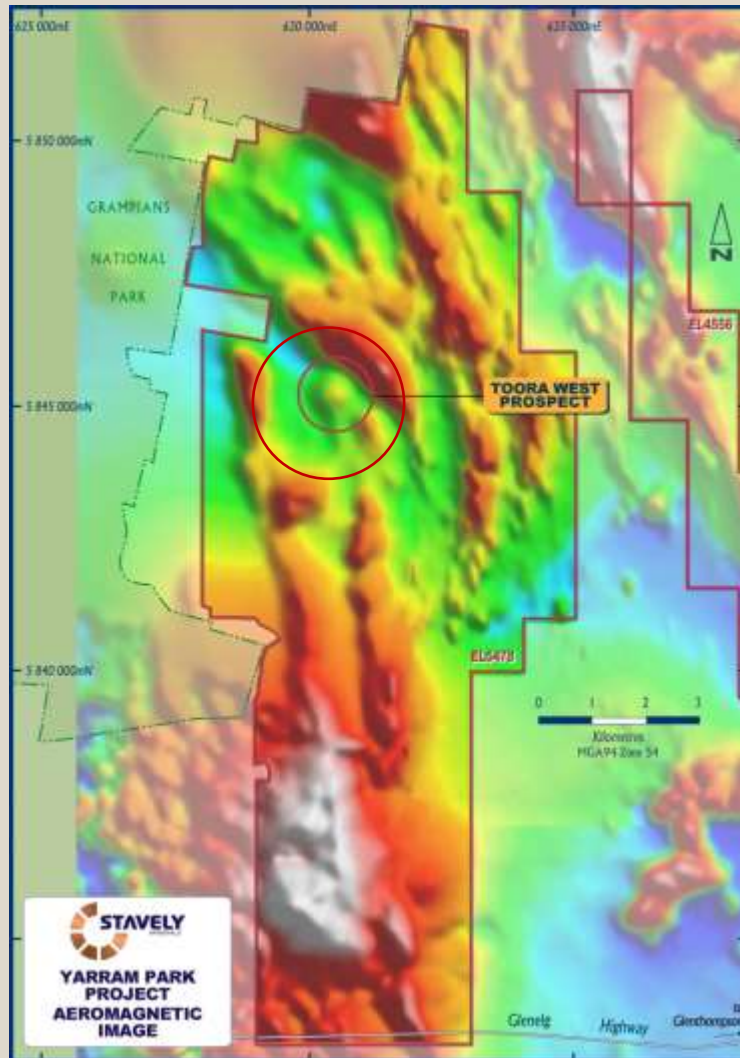


## Yarram Park Project

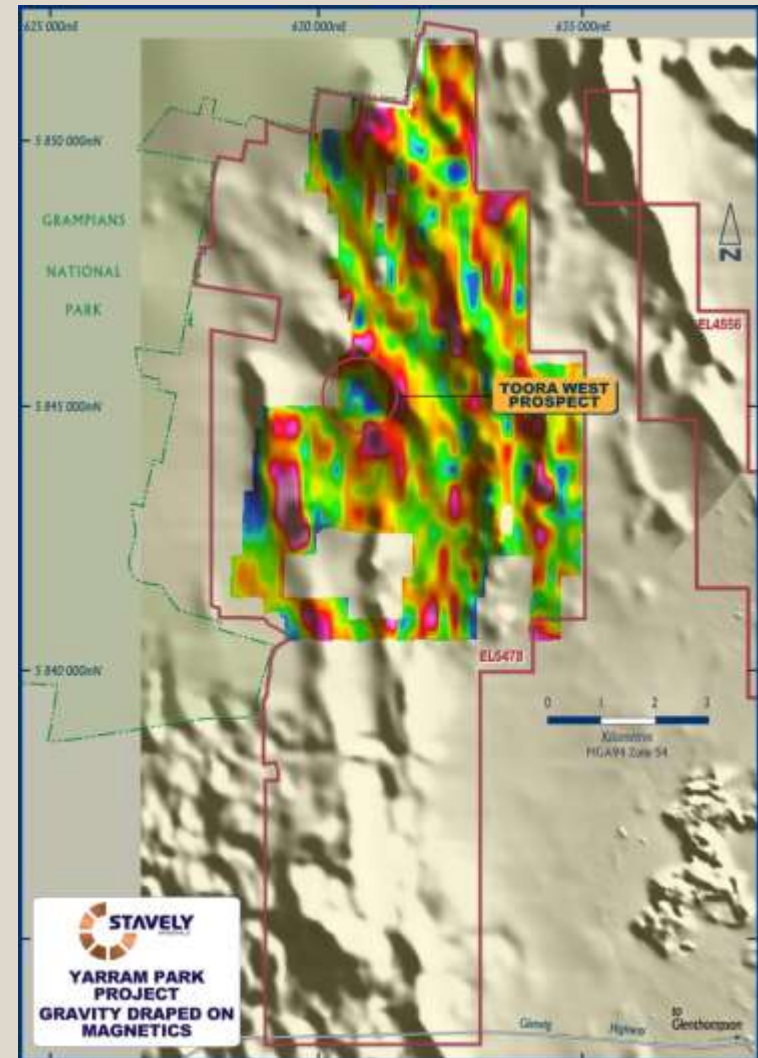
- ✓ Located on a structurally offset segment of the Stavely Volcanic Arc
- ✓ Hosts the Toora West prospect



# YARRAM PARK PROJECT



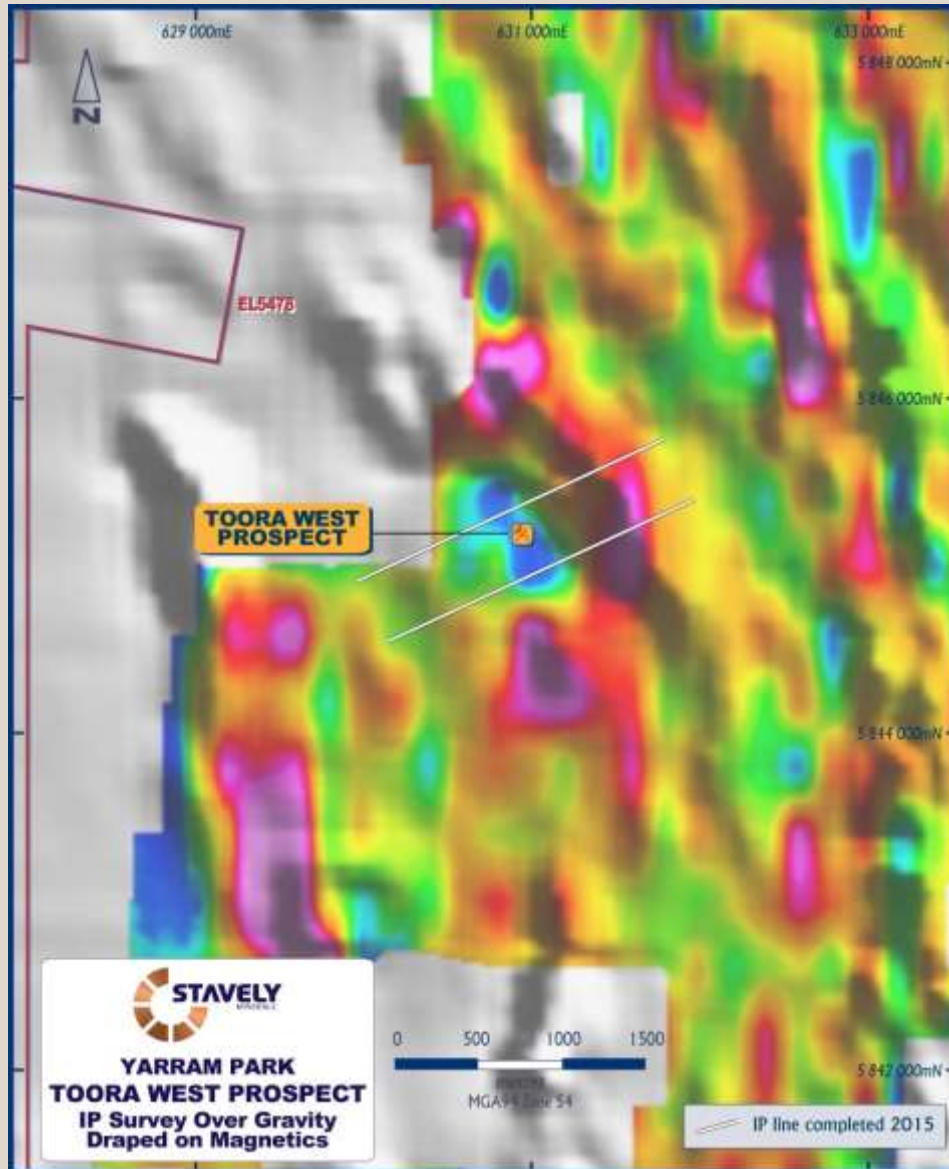
Mag high annulus and central high



Gravity low



# YARRAM PARK PROJECT



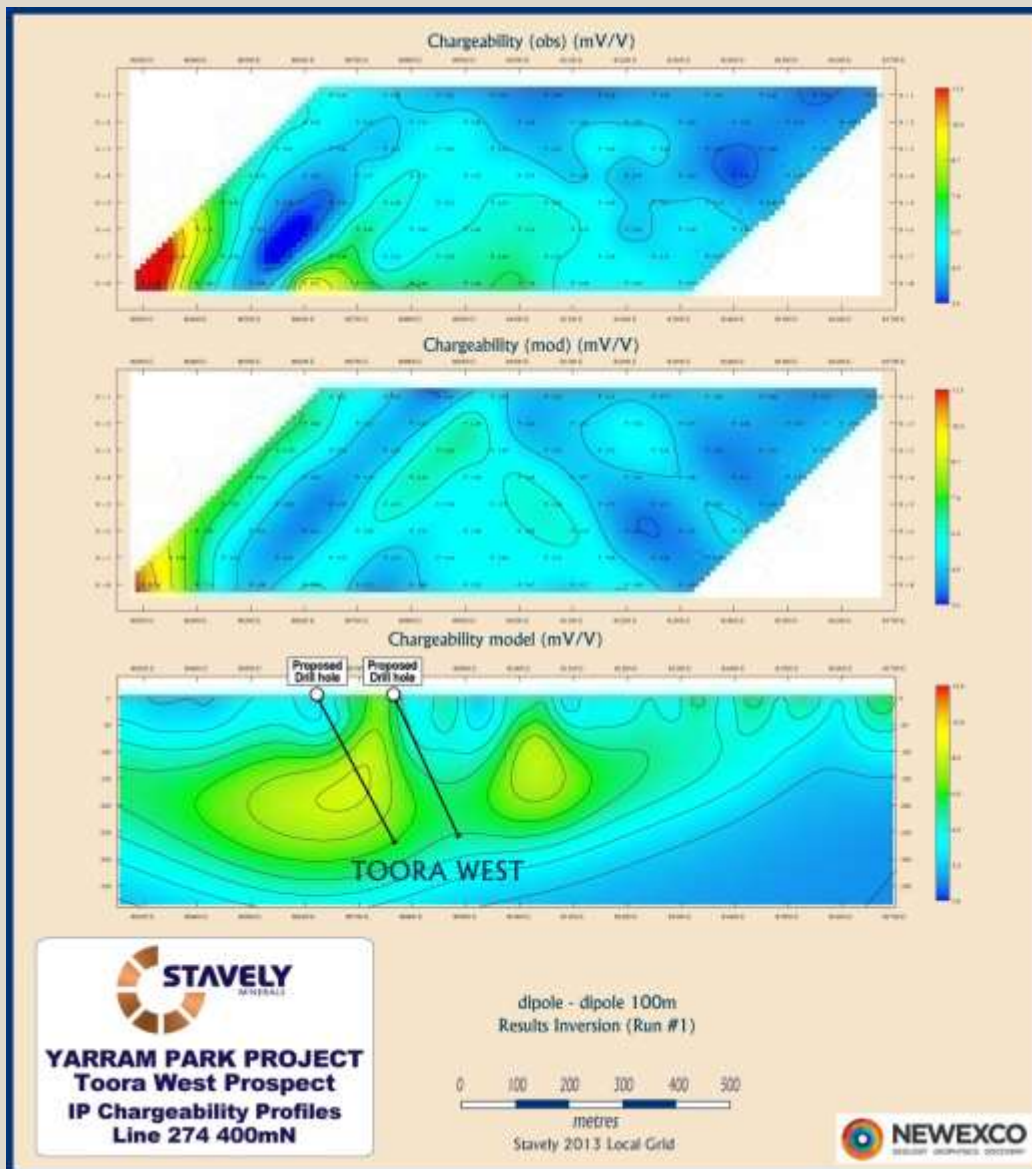
## Toora West prospect

- ✓ Mag high annulus and central high
- ✓ Gravity low

Two lines of IP completed



# YARRAM PARK PROJECT

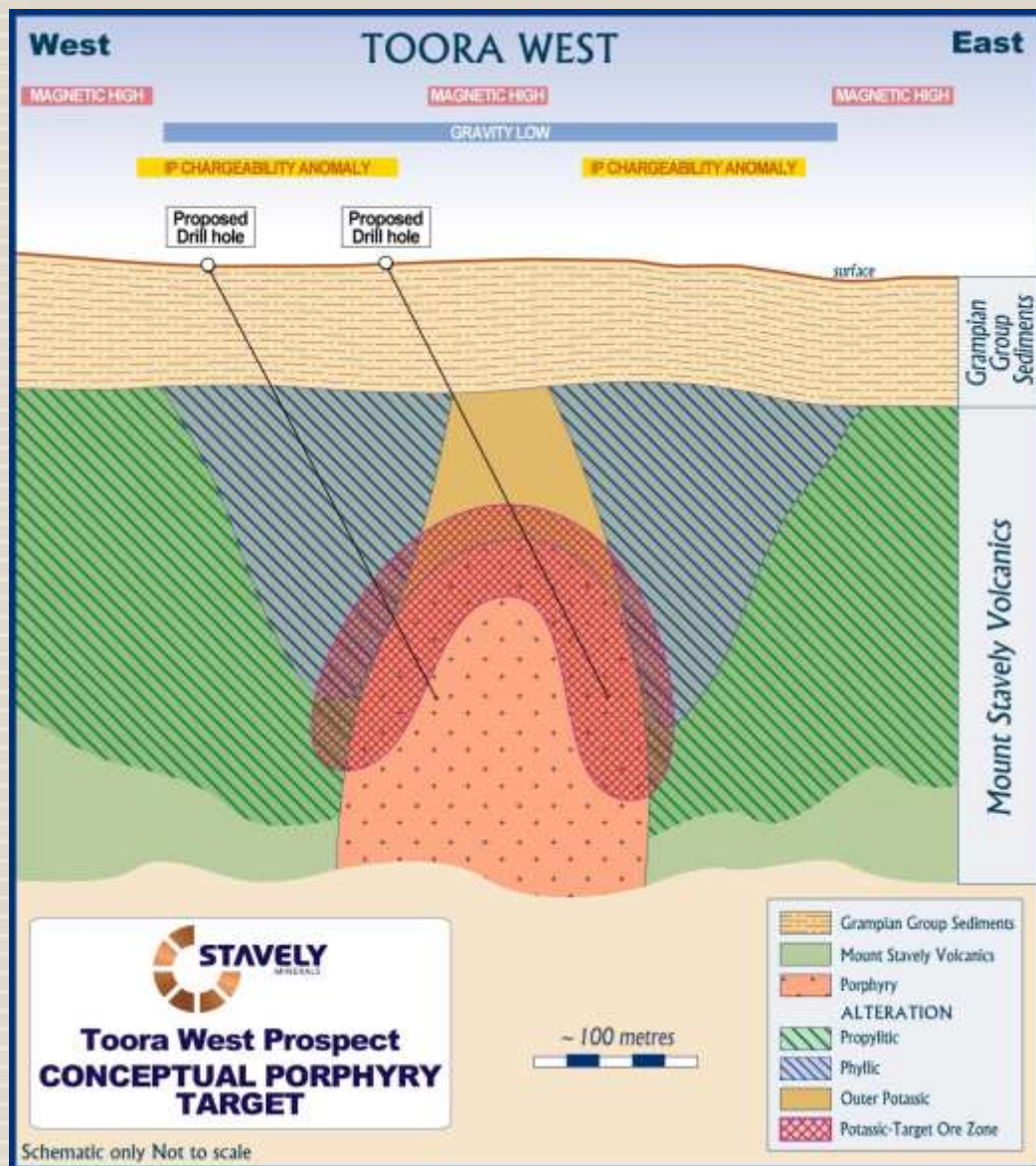


## Toora West prospect

- ✓ Mag high annulus and central high
- ✓ Gravity low
- ✓ Both IP lines have chargeability anomalies either side of the central magnetic high



# YARRAM PARK PROJECT



## Toora West prospect

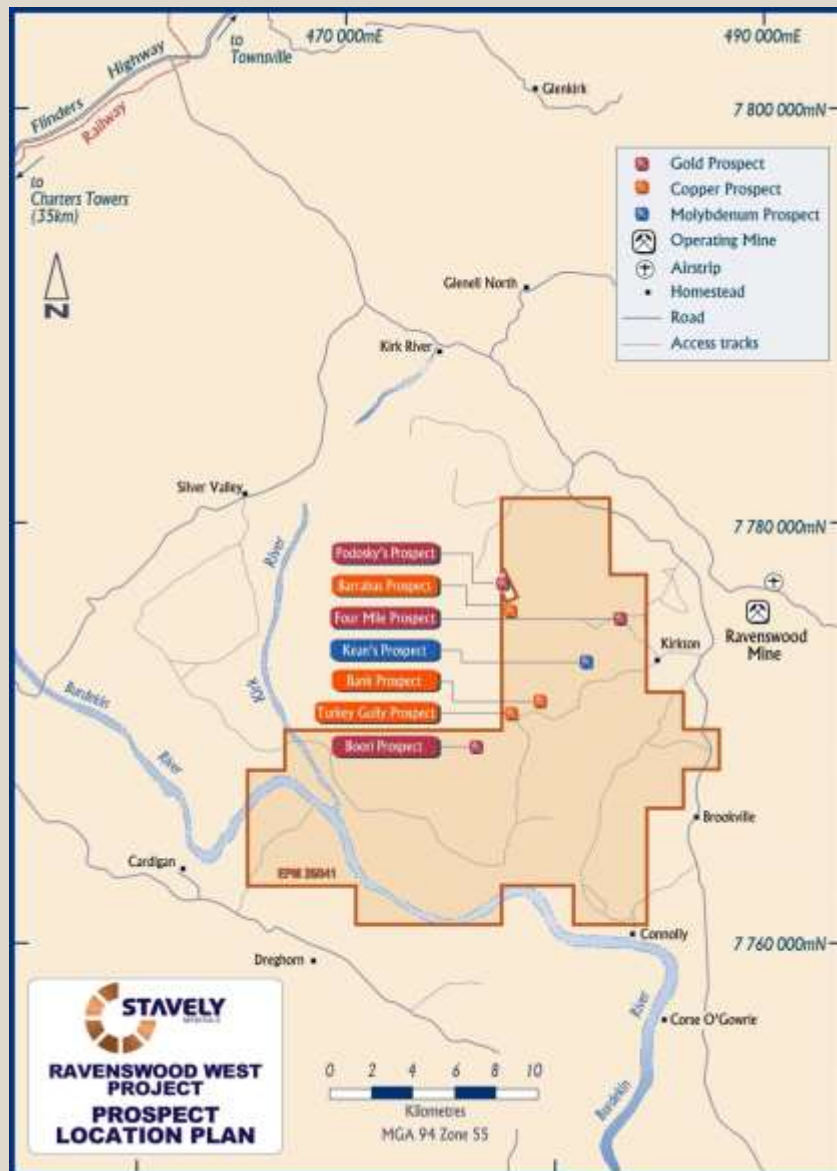
- ✓ Mag high annulus and central high
- ✓ Gravity low
- ✓ Both IP lines have chargeability anomalies either side of the central magnetic high
- ✓ **Victorian Government co-funding for an additional 3 lines of IP and 2 x diamond drill holes**
- ✓ **No previous drilling**



# RAVENSWOOD WEST PROJECT



# RAVENSWOOD WEST PROJECT



## Ravenswood West Project

- ✓ Adjacent to the Ravenswood mining centre - ~4Moz produced
- ✓ 4 x porphyry copper / moly prospects
- ✓ 3 x mesothermal vein hosted gold prospects
- ✓ 'The Bank' breccia pipe
  - Similar geochemistry to Mt Wright (1Moz) and Welcome (210koz) breccia pipes
  - **undrilled**



# RAVENSWOOD WEST PROJECT



## Ravenswood West Project – ‘The Bank’ breccia

Brecciated rhyolite, granodiorite, vein fragments in a milled matrix with boxworks after sulphides



Brecciated chalcedony veins with granodiorite clasts = high level in the system







# WORK PROGRAMMES



# WORK PROGRAMMES



## **Work programme for the Thursday's Gossan Chacocite 'Blanket'**

- Commence a Scoping Study on low-cost copper production

## **Work programme for the Ararat Project**

- Additional surface geochemistry and IP geophysics to identify additional base metal–gold mineralised horizons in advance of drilling

## **Work programme for the Stavely Project**

- At Thursday's Gossan - 2 x IP lines and 3 x 300m diamond drill holes
- At Mount Stavely – 1 x 300m diamond drill hole
- At Fairview Gold – 17 x 2km IP lines

## **Work programme for the Yarram Park Project**

- At Toora West - 3 x IP lines and 2 x 300m diamond drill holes

## **Work programme for the Ravenswood Project**

- Regional soil geochemistry
- At 'The Bank' Breccia – additional soil geochemistry in advance of drilling – current plan 2 x 300m diamond drill holes

**Scoping Study on copper production and multiple significant discovery opportunities**



# WORK PROGRAMMES



## Work programme for the Thursday's Gossan Chacocite 'Blanket'

- Commence a Scoping Study on low-cost copper production

## Work programme for the Ararat Project

- Additional surface geochemistry and **IP geophysics** to identify additional base metal–gold mineralised horizons in advance of drilling

## Work programme for the Stavely Project

- At Thursday's Gossan - **2 x IP lines** and **3 x 300m diamond drill holes**
- At Mount Stavely – **1 x 300m diamond drill hole**
- At Fairview Gold – **17 x 2km IP lines**

## Work programme for the Yarram Park Project

- At Toora West - **3 x IP lines** and **2 x 300m diamond drill holes**

## Work programme for the Ravenswood Project

- Regional soil geochemistry
- At 'The Bank' Breccia – additional soil geochemistry in advance of drilling – current plan **2 x 300m diamond drill holes**

**Bold = Victorian Government co-funding on offer**



# STAVELY MINERALS



ASX Code – SVY

Share Price - \$0.13

Cash (30/06/16) - \$1.52M\*

*\*Excludes Titeline Drilling agreement*

## Directors

Bill Plyley

*Non-executive Chairman*

Chris Cairns

*Managing Director*

Jennifer Murphy

*Technical Director*

Peter Ironside

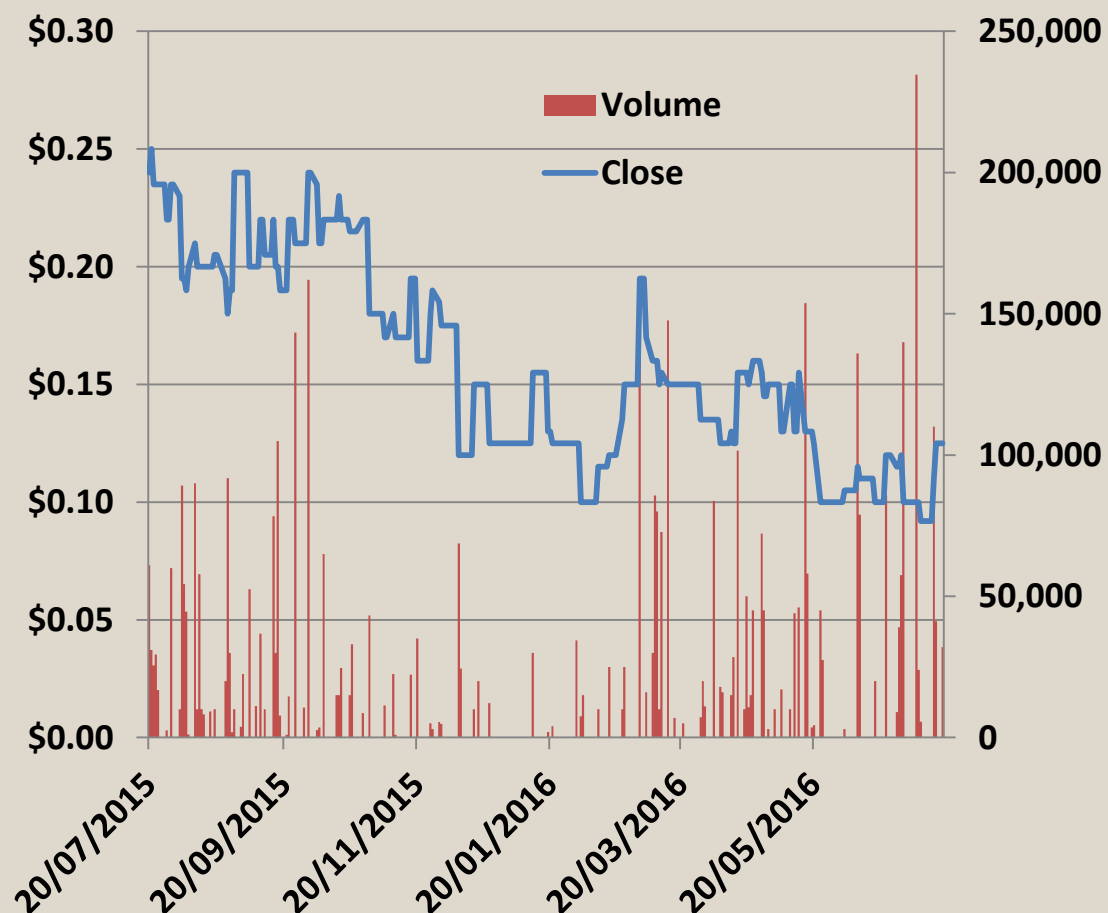
*Non-executive Director*

Amanda Sparks

*Company Secretary*

Shares on Issue – 95.5M

Market Cap - \$12.4M



*\*\$2m share subscription agreement with Titeline Drilling Pty Ltd announced to the ASX on 7 October 2014*



## Thank You

Contact Us:

Stavely Minerals Limited

Level 1, 168 Stirling Highway

Nedlands WA 6009

[www.stavely.com.au](http://www.stavely.com.au)

[info@stavely.com.au](mailto:info@stavely.com.au)

Ph: 08 9287 7630

*The information in this presentation is extracted from information available to view on [www.stavely.com.au](http://www.stavely.com.au). The company confirms that it is not aware of any new information or data that materially affects the information included in the original market announcement and, in the case of estimates of Mineral Resources or Ore Reserves, that all material assumptions and technical parameters underpinning the estimates in the relevant market announcement continue to apply and have not materially changed. The company confirms that the form and context in which the Competent Person's findings are presented have not been materially modified from the original market announcement.*