



# DEFINING A WORLD-CLASS PROJECT

DIGGERS & DEALERS, AUGUST 2016





# IMPORTANT NOTICE



## Cautionary Notes

Mineral Resources that are not mineral reserves do not have demonstrated economic viability. Mineral resource estimates do not account for mineability, selectivity, mining loss and dilution. These mineral resource estimates include inferred mineral resources that are normally considered too speculative geologically to have economic considerations applied to them that would enable them to be categorized as mineral reserves. There is also no certainty that these inferred mineral resources will be converted to measured and indicated categories through further drilling, or into mineral reserves, once economic considerations are applied.

Production targets for the proposed heap leach starter project referred to in this announcement were first released to the ASX and TSXV on 23 February 2015. They are preliminary and there is no certainty that the production targets, or the forecast financial information derived from the production targets, will be realised. All material assumptions underpinning production targets or forecast financial information derived from production targets continue to apply and have not materially changed.

## Competent Person's Statements

The information that relates to Exploration Results, Mineral Resources and Production Targets was extracted from WAF's NI43-101 reports and ASX Announcements dated 23 February 2015, 16th & 30th April 2015, 15th May 2015, 16th & 18th June 14th July 2015, August 17th & 25th August 2015 & 8th September 2015, 1st, 15th, 22nd and 30th March 2016 and are located on the Company's website [www.westafricanresources.com](http://www.westafricanresources.com).

Information in this announcement that relates to exploration results is based on information compiled by Mr Richard Hyde, a Director, who is a Member of The Australian Institute of Mining and Metallurgy and Australian Institute of Geoscientists. Mr Hyde has sufficient experience which is relevant to the style of mineralisation and type of deposit under consideration and to the activity which he is undertaking to qualify as a Competent Person as defined in the 2012 Edition of the Australasian Code for Reporting of Exploration Results, Mineral Resources and Ore Reserves (the JORC Code) and a Qualified Person under National Instrument 43-101. Mr Hyde consents to the inclusion in this announcement of the statements based on his information in the form and context in which they appear.

Information in this announcement that relates to mineral resources is based on, and fairly represents, information and supporting documentation prepared by Mr Brian Wolfe, an independent consultant specialising in mineral resource estimation, evaluation and exploration. Mr Wolfe is a Member of the Australian Institute of Geoscientists. Mr Wolfe has sufficient experience which is relevant to the style of mineralisation and type of deposit under consideration and to the activity which he is undertaking to qualify as a Competent Person (or "CP") as defined in the 2012 Edition of the Australasian Code for Reporting of Exploration Results, Mineral Resources and Ore Reserves (the JORC Code) and a Qualified Person under Canadian National Instrument 43-101. Mr Wolfe has reviewed the contents of this news release and consents to the inclusion in this announcement of all technical statements based on his information in the form and context in which they appear.

Information in this announcement that relates to ore reserves is based on, and fairly represents, information and supporting documentation prepared by Mr Nigel Spicer, an independent consultant specialising in mining engineering. Mr Spicer is a Member of the Australian Institute of Mining and Metallurgy and the Institute of Materials, Minerals & Mining. Mr Spicer has sufficient experience which is relevant to the style of mineralisation and type of deposit under consideration and to the activity which he is undertaking to qualify as a Competent Person (or "CP") as defined in the 2012 Edition of the Australasian Code for Reporting of Exploration Results, Mineral Resources and Ore Reserves (the JORC Code) and a Qualified Person under Canadian National Instrument 43-101. Mr Spicer has reviewed the contents of this news release and consents to the inclusion in this announcement of all technical statements based on his information in the form and context in which they appear.

## Forward Looking Information

This presentation contains "forward-looking information" within the meaning of applicable Canadian and Australian securities legislation, including information relating to West African's future financial or operating performance may be deemed "forward looking". All statements in this news release, other than statements of historical fact, that address events or developments that West African expects to occur, are "forward-looking statements". Forward-looking statements are statements that are not historical facts and are generally, but not always, identified by the words "expects", "does not expect", "plans", "anticipates", "does not anticipate", "believes", "intends", "estimates", "projects", "potential", "scheduled", "forecast", "budget" and similar expressions, or that events or conditions "will", "would", "may", "could", "should" or "might" occur. All such forward-looking statements are based on the opinions and estimates of the relevant management as of the date such statements are made and are subject to important risk factors and uncertainties, many of which are beyond West African's ability to control or predict. Forward-looking statements are necessarily based on estimates and assumptions that are inherently subject to known and unknown risks, uncertainties and other factors that may cause actual results, level of activity, performance or achievements to be materially different from those expressed or implied by such forward-looking statements. In the case of West African, these facts include their anticipated operations in future periods, planned exploration and development of its properties, and plans related to its business and other matters that may occur in the future. This information relates to analyses and other information that is based on expectations of future performance and planned work programs. Statements concerning mineral resource estimates may also be deemed to constitute forward-looking information to the extent that they involve estimates of the mineralization that will be encountered if a mineral property is developed.

Forward-looking information is subject to a variety of known and unknown risks, uncertainties and other factors which could cause actual events or results to differ from those expressed or implied by the forward-looking information, including, without limitation: exploration hazards and risks; risks related to exploration and development of natural resource properties; uncertainty in West African's ability to obtain funding; gold price fluctuations; recent market events and conditions; risks related to the uncertainty of mineral resource calculations and the inclusion of inferred mineral resources in economic estimation; risks related to governmental regulations; risks related to obtaining necessary licenses and permits; risks related to their business being subject to environmental laws and regulations; risks related to their mineral properties being subject to prior unregistered agreements, transfers, or claims and other defects in title; risks relating to competition from larger companies with greater financial and technical resources; risks relating to the inability to meet financial obligations under agreements to which they are a party; ability to recruit and retain qualified personnel; and risks related to their directors and officers becoming associated with other natural resource companies which may give rise to conflicts of interests. This list is not exhaustive of the factors that may affect West African's forward-looking information. Should one or more of these risks and uncertainties materialize, or should underlying assumptions prove incorrect, actual results may vary materially from those described in the forward-looking information.

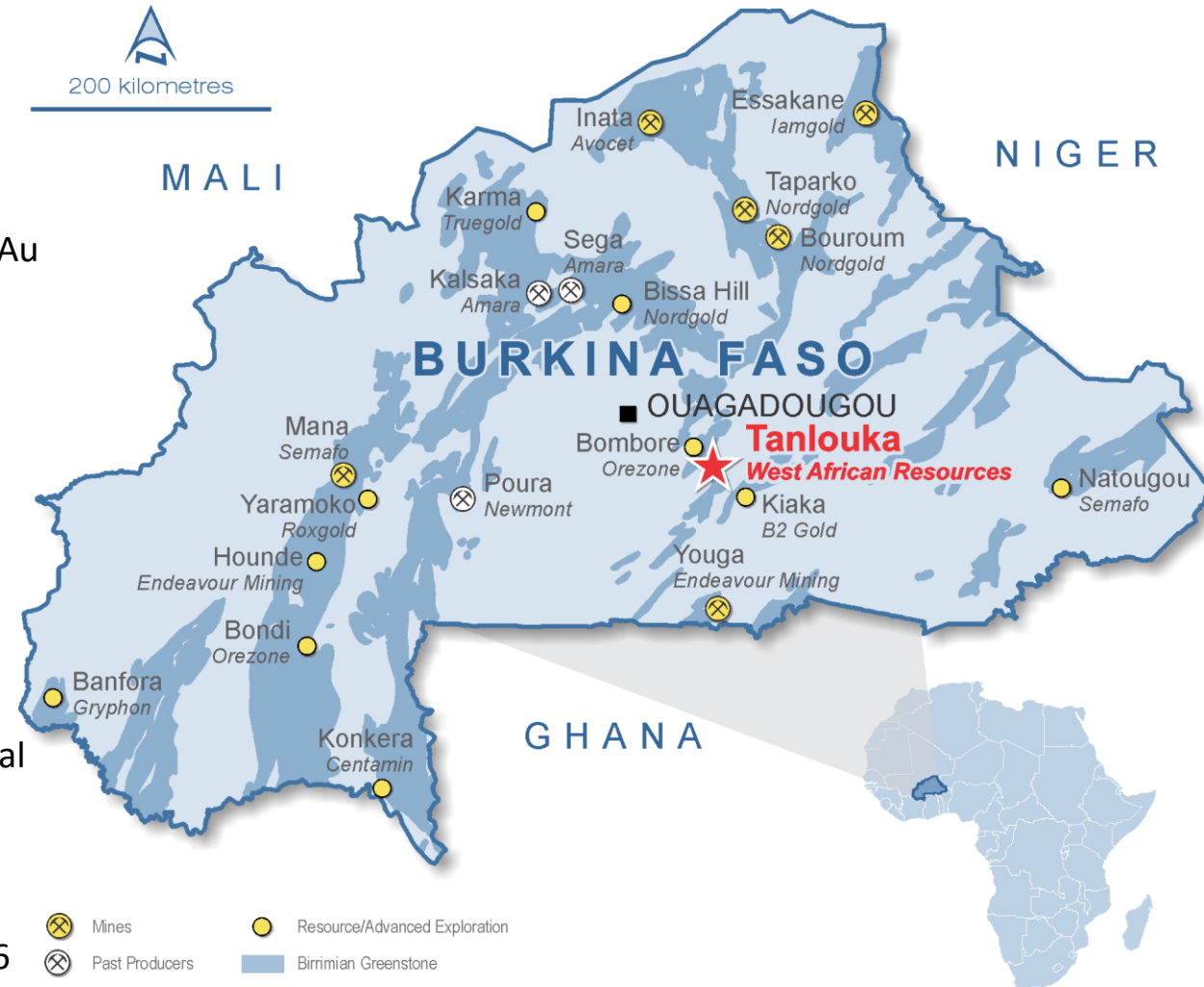
West African's forward-looking information is based on the reasonable beliefs, expectations and opinions of their respective management on the date the statements are made and West African does not assume any obligation to update forward looking information if circumstances or management's beliefs, expectations or opinions change, except as required by law. For the reasons set forth above, investors should not place undue reliance on forward-looking information. For a complete discussion with respect to West African, please refer to West African's financial statements and related MD&A, all of which are filed on SEDAR at [www.sedar.com](http://www.sedar.com).

Neither TSX Venture Exchange nor its Regulation Services Provider (as that term is defined in the policies of the TSX Venture Exchange) accepts responsibility for the adequacy or accuracy of this release.

# OVERVIEW OF TANLOUKA GOLD PROJECT

## Tanlouka: Defining a World-Class Project

- Recent transformational exploration success has underpinned a planned CIL development
  - TAN16-RC122: 12m at 53.11g/t Au, including 1m at 534.45g/t Au
  - TAN16-DD033: 4m at 86.96g/t Au from 93m including 1m at 343.59g/t Au
  - TAN16-RC131: 11m at 43.44g/t Au from 76m including 1m at 349.15g/t Au, 1m at 113.98g/t Au
  - TAN16-DD044: 18m at 82.3g/t Au from 98m including 1m at 1107g/t Au
- Aggressive drilling continues, with step-out and ongoing resource definition drilling anticipated to further increase the potential mineral inventory
- DFS due for completion in late Q4 2016
- Mining Licence applications lodged, approvals expected late Q3 2016
- Burkina Faso has more mines permitted in the last decade than any other jurisdiction, seven mines in operation



WAF\_REG\_0007B

## ASX & TSX-V: WAF

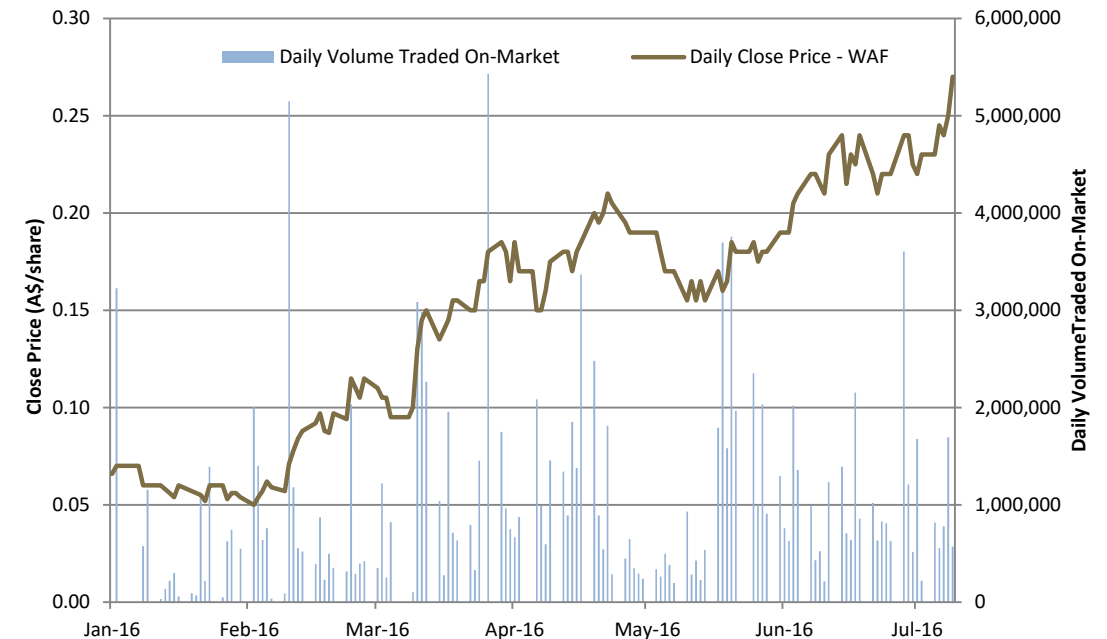
Total Ordinary Shares on Issue	408.9m
Options on issue	80.6m
Top 20 Shareholders	55%
Cash (as at 30 June 2016)	A\$11.3m
Senior Secured Convertible Loan	US\$5m
Market Capitalisation (at 27c/share)	A\$110m

**Note:** The senior secured convertible loan with Macquarie Bank Limited is repayable upon the earlier of 30 September 2016, or from the proceeds of a project financing or capital raising which fully or partially funds construction of the project

## Substantial Shareholders

Dynamic Funds (1832 Asset Management)	8.1%
Contango Asset Management	5.2%
Board and management	5.8%

## Share Price (ASX)



# EXPERIENCED BOARD & MANAGEMENT



## Board of Directors

<b>Richard Hyde</b> Managing Director and CEO	Geologist with 20 years of experience in the minerals industry and more than 15 years of experience in West Africa. Founding shareholder and Director of WAF.
<b>Mark Connelly</b> Non-Exec Chairman	Executive with more than 27 years experience in the mining industry, former MD and CEO of Papillon Resources Limited, a Mali-based gold developer which merged with B2Gold Corp in a US\$570 million deal.
<b>Simon Storm</b> Non-Exec Director	Chartered accountant with more than 25 years of Australian and international experience in the accounting profession and commerce.

## Management Team

<b>Lyndon Hopkins</b> Project Manager	More than 20 years of experience in gold exploration, development and production. Former COO of Equigold NL's Ivory Coast operations and Mine Manager for the construction of Regis Resources Ltd's Rosemont Gold Mine.
<b>Nick Harch</b> Advisor - Project Finance	More than 15 years with Macquarie Bank, experienced in initiating and leading equity, quasi-equity, project finance and structured hedging transactions for a broad range of resource projects, across many countries.
<b>Vincent Morel</b> Exploration Manager	Geologist with 25 years of experience in the mining, with over 20 years of experience in Africa. Involved with discovery of Randgold's +10Moz gold Morila gold mine in Mali.
<b>Pierre Tapsoba</b> National Director	Dr Tapsoba is a Burkinabe' national. PhD trained geologist with over 40 years or experience. Former government minister, with strong local relationships.

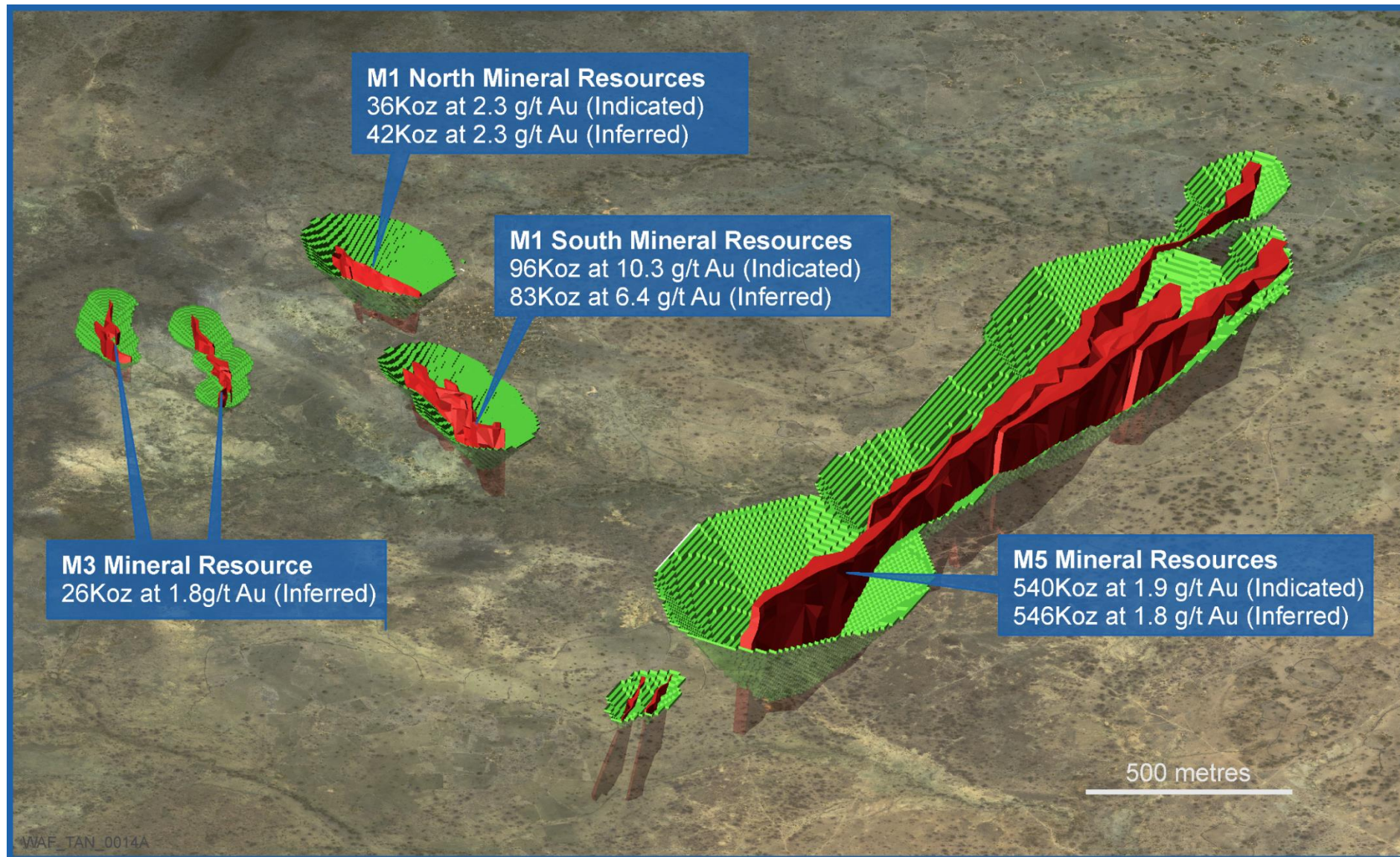
# TANLOUKA GOLD PROJECT

---



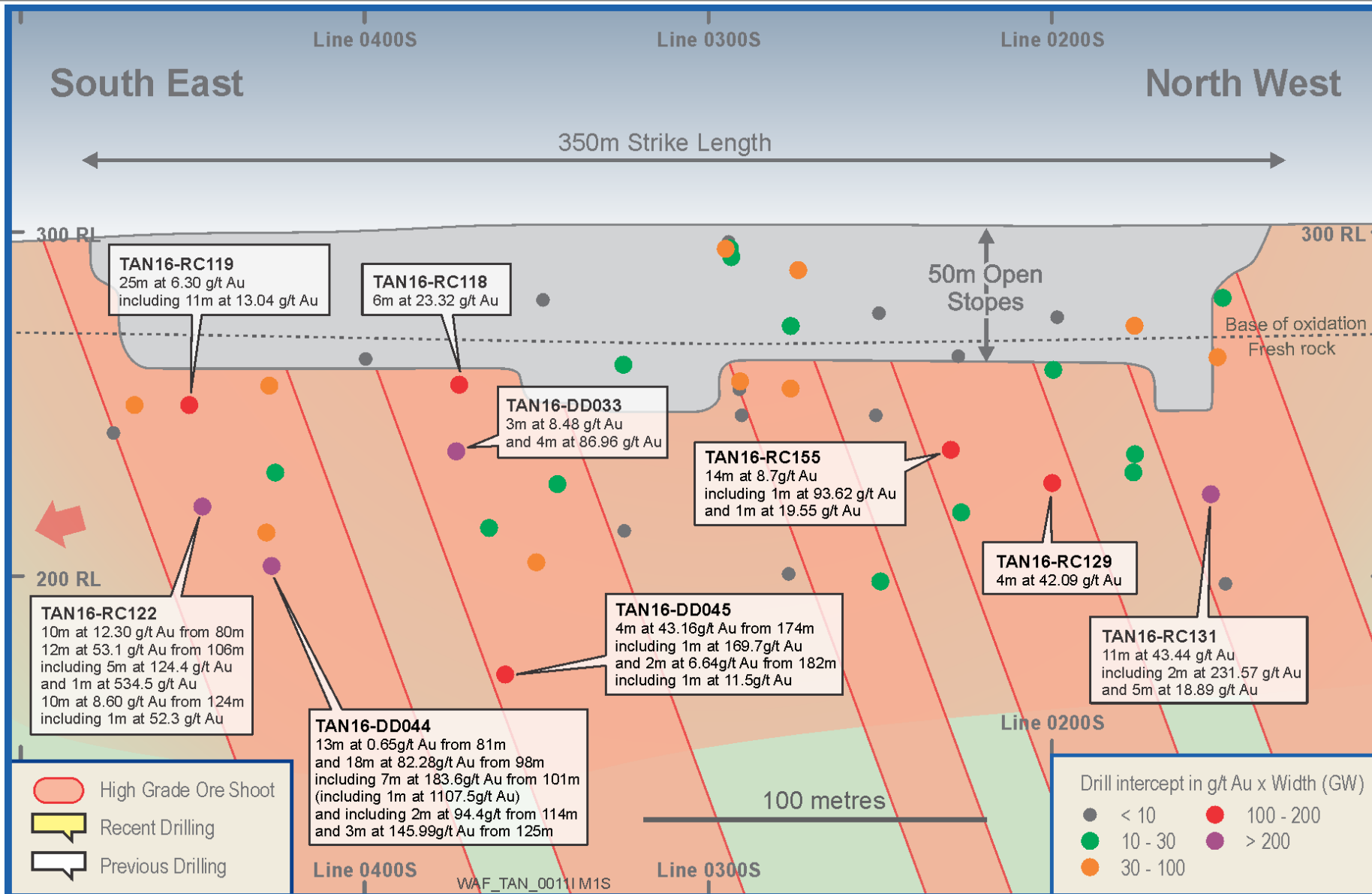


# OVERVIEW THE TANLOUKA GOLD PROJECT



- M1, M3 and M5 Deposits
- All located within 2-3km
- Potential for centralised plant and processing
- **Mineral Resource** 9.8Mt tonnes at 2.1 g/t Au (0.7Moz Indicated), 10.7Mt tonnes at 2.0 g/t Au (0.7Moz Inferred)
- 34% increase in Indicated mineral resources for Tanlouka Gold Project
- DFS in progressing quickly

# M1 SOUTH: FOCUS SHIFT



## Ultra high grade discovery hole at M1 South TAN16-RC122 1st March 2016

- 11,000m drilling, average depth 120m, 150m resource depth
- Maiden resource 0.3Mt at 10.3 g/t Au (96Koz Ind.), 0.4Mt at 6.4 g/t Au (83Koz Inf.)
- 1,600oz/m 30m -130m below surface
- Deepest intercept 4m at 43.16g/t from 175m downhole



# M1 SOUTH GOLD MINERALISATION

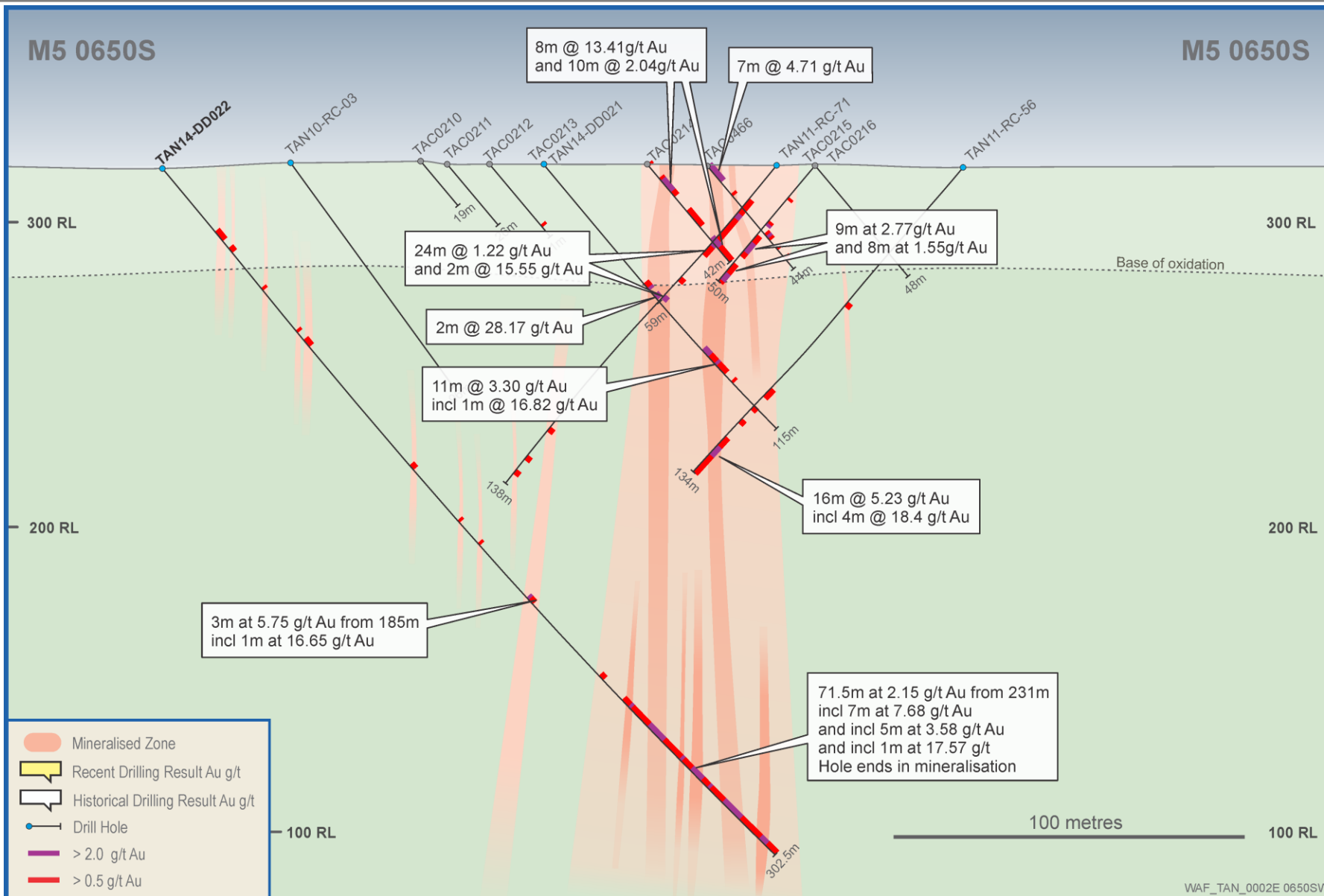


**TAN16-DD044: 18m at 82.28g/t Au  
including 1m at 1107.5g/t Au**

**TAN16-RC122: 12m at 53.11g/t Au including 1m at  
534.45g/t Au**



# M5 TONNES OF OPTIONS



- 9Mt at 1.9 for 0.5 Moz Au (Indicated) and 9.3Moz at 1.8g/t Au 0.6 Moz Au (Inferred)
- Over 50% oxide and transitional material
- Metallurgical test work recoveries up to 98% oxide, 92% fresh
- 56,000m RC and diamond drilling, average depth 140m
- Ore shoots open at depth plunge steeply to northeast
- Southwestern 1km of deposit higher grade at depth



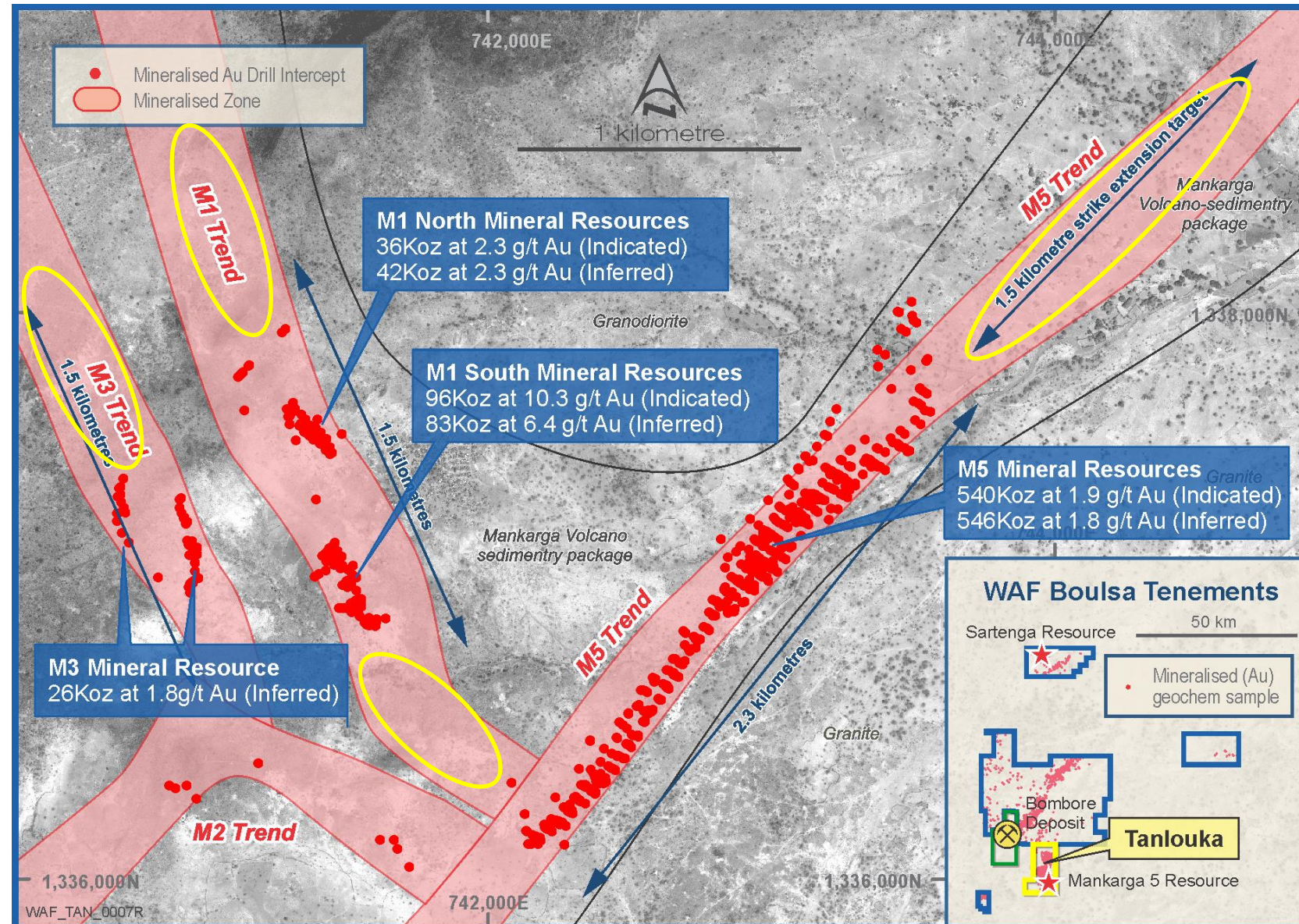
# WORK PROGRAM FOR 2016 – THE PERILS OF WET SEASON

- M1 South - two diamond rigs commenced 25m x 50m pattern drilling 150m to 300m below surface
- M5 - one multipurpose RC/diamond rig, upgrading in-pit inferred resources, pre-collaring deep diamond at south-western portion of deposit
- On-going monitoring of water, flora and fauna
- Final presentation to COTEVE for ESIA and RAP, ahead of approval of Environmental licence expected Q4





# FURTHER RESOURCE POTENTIAL



- 20,000m drilling campaign 2016 adding to the resource inventory and upgrading inferred resources
- M1 South 10,000m diamond drilling, 25m x 50m centres to test mineralisation to 300m vertical
- M5 7,000m RC and diamond drilling upgrading in-pit inferred mineralisation
- The Gap 1,000m RC testing m1 South to M5
- 2,000m RC M3, M1 North and M5 extensions

# FEASIBILITY STUDY IS ON SCHEDULE

## Feasibility Study is on schedule to be delivered in late Q4 2016

- This will represent only 9 months from discovery of high grade at M1 South
- The Feasibility Study work underway:
  - ✓ **Resources:** will incorporate additional resources defined before the end of the year
  - ✓ **Metallurgy:** All met holes completed, airfreighted and at ALS Ammtec in Perth.
  - ✓ **Approvals:** mining licence and environmental permits anticipated Q4
  - ✓ **Processing Scale:** throughput of 2-3Mtpa under consideration
  - ✓ **Open Pit Only:** Tanlouka's underground potential won't be incorporated yet – there is potential for significant further growth in mineral resources

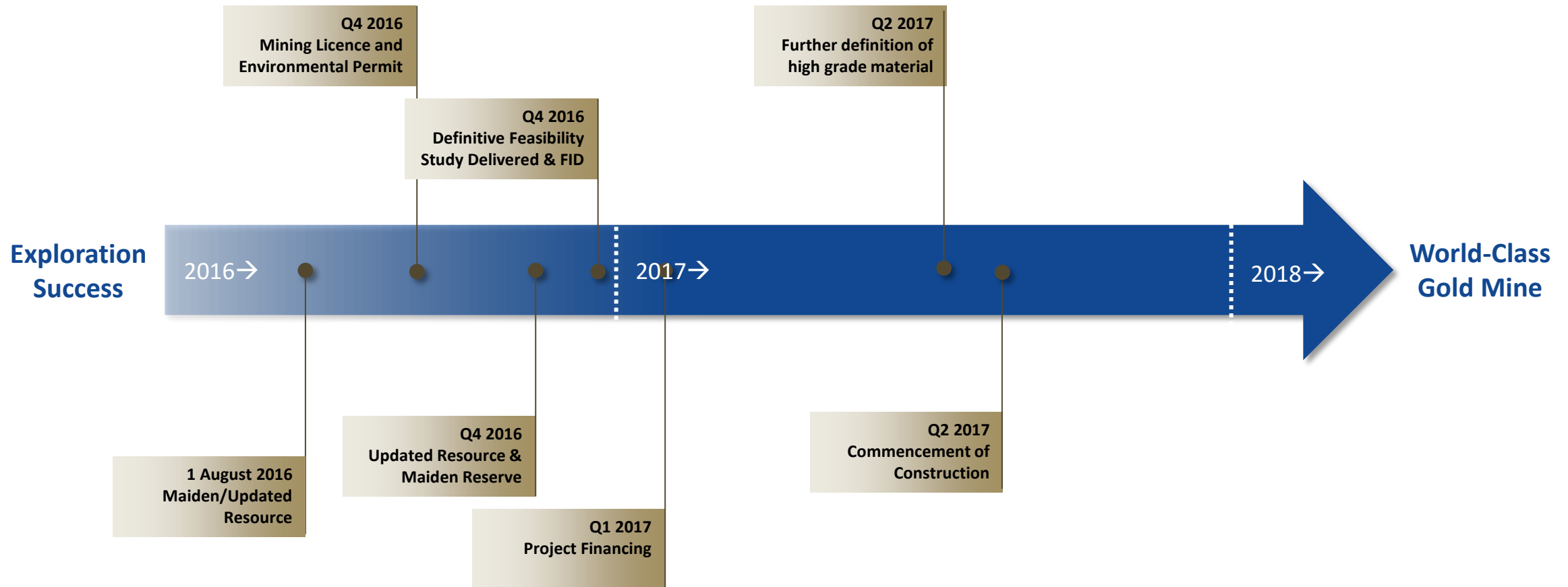
**WAF aims to have Tanlouka 'shovel-ready' by end of 2016**



- Process Plant Design - Mintrex
- Metallurgical Overview - Aurifex
- Metallurgical Testwork ALS - Ammtec
- Comminution Modelling - Orway Mineral Consultants
- Hydrogeology - Knight Piesold
- Environmental Permitting - INGRID supervised by Knight Piesold
- Flora Surveys - INGRID supervised by Knight Piesold
- Waste Rock Classification - INGRID supervised by Knight Piesold
- Geotechnical Assessment - Peter O'Bryan and Associates
- Tailings Storage Design - Knight Piesold
- Surface Surveys - Sahara Mining
- Resource Estimation - Independent Resource Solutions



## Upcoming catalysts Tanlouka to become a world-class gold mine



- ❖ Burkina Faso focussed gold developer; ASX and TSX-V listed (“WAF”)
- ❖ WAF owns 100%# of the Tanlouka Gold Project in Burkina Faso
- ❖ Recent ultra high grade discoveries have significantly upgraded the Tanlouka Gold Project
- ❖ A significant development scenario is now under consideration, assuming gravity and CIL processing
- ❖ Robust in-pit resources
- ❖ Step-out exploration drilling continuing throughout 2016 driving strong news flow
- ❖ DFS on track for delivery in Q4 2016
- ❖ Mining licence and environmental approvals on track for delivery in Q4 2016
- ❖ Board and management has strong experience developing and operating gold projects in West Africa

# The Burkina Faso Government has a right to a 10% free-carried interest in all mining projects



# CONTACTS



Richard Hyde  
Managing Director  
[richard@westafricanresources.com](mailto:richard@westafricanresources.com)  
+61 8 9481 7344



## APPENDIX: ADDITIONAL SLIDES

---



# MINERAL RESOURCES & ORE RESERVES

Tanlouka Gold Project August 2016 Resource							
	Cut-off (Au g/t)	Indicated Resource			Inferred Resource		
		Tonnes	Grade (Au g/t)	Au Oz	Tonnes	Grade (Au g/t)	Au Oz
M5	0.5	22,400,000	1.2	842,000	24,100,000	1.1	877,000
	1	9,000,000	1.9	540,000	9,300,000	1.8	546,000
M1 South	0.5	506,000	6.2	101,000	697,000	4.0	90,000
	1	289,000	10.3	96,000	405,000	6.4	83,000
M1 North	0.5	626,000	2.0	40,000	769,000	1.9	47,000
	1	500,000	2.3	36,000	568,000	2.3	42,000
M3	0.5	-	-	-	542,000	1.6	29,000
	1	-	-	-	442,000	1.8	26,000
Total	0.5	23,500,000	1.3	983,000	26,100,000	1.2	1,043,000
	1	9,800,000	2.1	672,000	10,700,000	2.0	697,000

ASX, TSXV: New release dated 1/8/16 \*Mineral resources are not mineral reserves and do not have demonstrated economic viability. All figures have been rounded to reflect the relative accuracy of the estimates. Mineral resources have been reported within optimized pit shells using a gold price of US\$1650/oz a cut-off grade of 0.3 g/t Au for oxide mineralization and 0.4 g/t Au for fresh rock derived by the following key input parameters. Metallurgical recovery for CIL processing: oxide and transitional - 95% & fresh - 90%. Mining cost: \$1.50/t oxide; \$1.90/t transitional; \$2.50/t fresh. Process costs: \$9.00/t for oxide; \$12.00/t for transitional and fresh. Pit slope angles of 45° for oxide and 50° for transitional and fresh at a conceptual annual production rate of 2.5 Mtpa.