



ASX Release

31 October 2016

LINDIAN RESOURCES
LIMITED

Level 11, London House
216 St Georges Terrace
Perth, WA 6000

Tel: +61 8 9481 0389
Fax: +61 8 9463 6103

Contact:

Eddie King
Chairman

E-mail:

info@lindianresources.com.au

For the latest news:

www.lindianresources.com.au

Directors

Eddie King
Kerry Griffin
Steve Formica

Company Secretary

Stephen Brockhurst

ASX Symbol:

LIN, LINO

Issued Capital:

1,428,120,659 shares

SEPTEMBER 2016 QUARTERLY ACTIVITIES REPORT

Lindian Resources Limited (the **Company**) provides the following update to shareholders in respect to the Company's activities for the September 2016 quarter.

SUMMARY

There were no significant activities during the quarter.

CORPORATE

The Company continued to assess new opportunities that add value for shareholders.

SUBSEQUENT TO QUARTER END

On 6 October 2016, the Company announced it had executed a binding share sale agreement to acquire the Uyowa and Kahama Gold Projects in Tanzania (Tanzanian Projects).

Tanzanian Projects

The Tanzanian Projects include two approved prospecting licences (PLs) and 7 primary mining licences (PMLs) that are still in application. In addition to these licences, there is also a 3-year option to acquire up to 10 additional primary mining licences within the current Uyowa Project area. The location of the Tanzanian Projects is shown in Figure 1 below.

Placement

The Company also undertook a placement of 200,000,000 fully paid ordinary shares (Placement) at an issue price of \$0.0015 per share to raise \$300,000 (before costs), with an attaching option having an exercise price of \$0.002 and expiring on 31 December 2020.

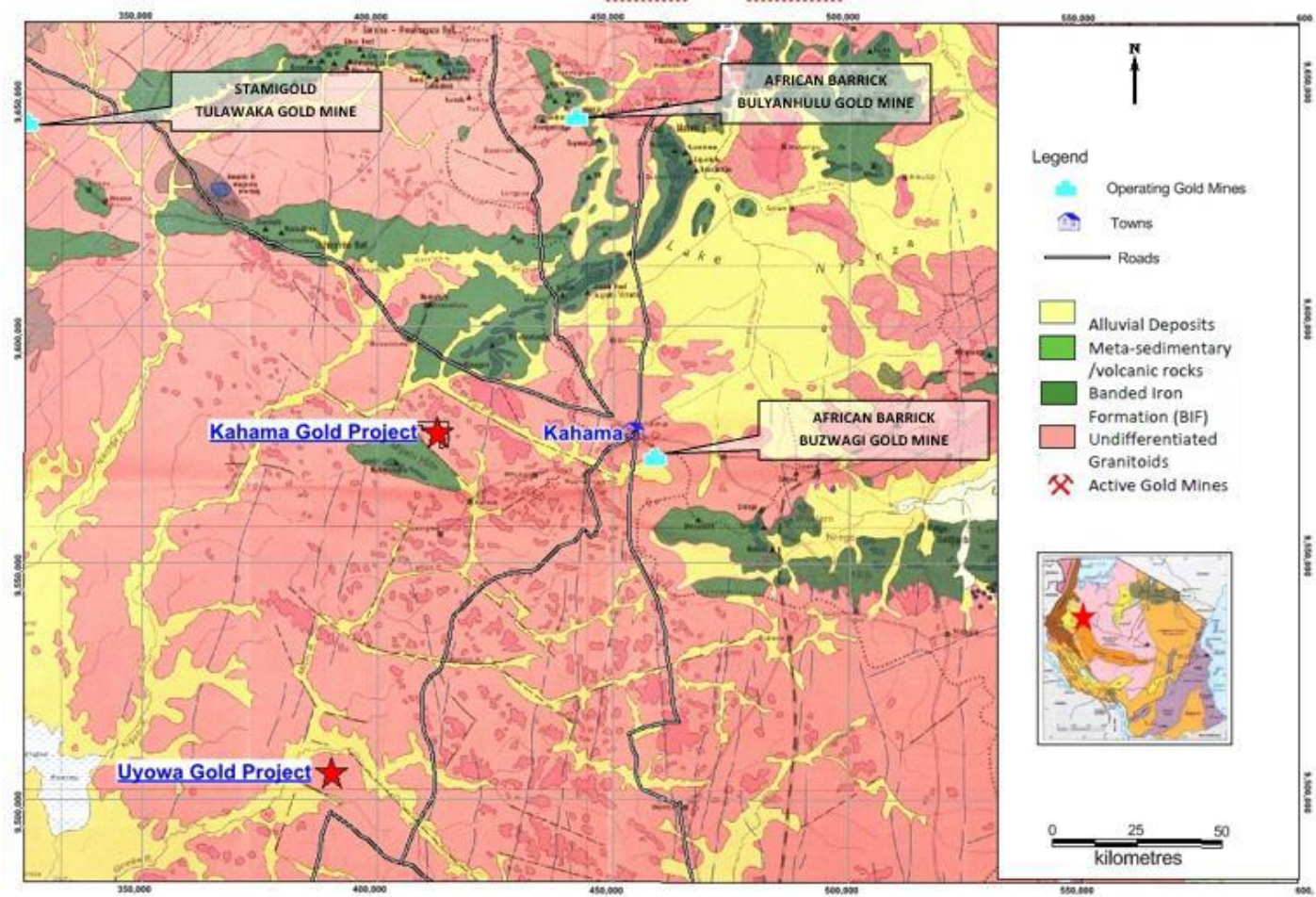
By the order of the Board

Eddie King
Chairman

ASX LISTING RULE 5.3.3–DETAILS OF TENEMENTS HELD AT END OF QUARTER.

| Tenement Reference | Tenement Location | Interest Acquired / Disposed | Interest Held |
|--------------------|------------------------|------------------------------|---------------|
| 004-91-XI | Masapelid, Philippines | 100% | 0% |
| EP V 2001-001 | Exciban, Philippines | - | 0% |
| EXPA 90-CAR | Abra, Philippines | - | 0% |

Figure 1 Location of the Kahama and Uyowa Gold Projects



Appendix 5B

Mining exploration entity and oil and gas exploration entity quarterly report

Introduced 01/07/96 Origin Appendix 8 Amended 01/07/97, 01/07/98, 30/09/01, 01/06/10, 17/12/10, 01/05/13, 01/09/16

Name of entity

LINDIAN RESOURCES LIMITED

ABN

53 090 772 222

Quarter ended ("current quarter")

30 September 2016

| Consolidated statement of cash flows | Current quarter \$A'000 | Year to date (3 months) \$A'000 |
|---|----------------------------|---------------------------------------|
| 1. Cash flows from operating activities | | |
| 1.1 Receipts from customers | - | - |
| 1.2 Payments for | | |
| (a) exploration & evaluation | - | - |
| (b) development | - | - |
| (c) production | - | - |
| (d) staff costs | - | - |
| (e) administration and corporate costs | (79) | (79) |
| 1.3 Dividends received (see note 3) | - | - |
| 1.4 Interest received | - | - |
| 1.5 Interest and other costs of finance paid | - | - |
| 1.6 Income taxes paid | - | - |
| 1.7 Research and development refunds | - | - |
| 1.8 Other (provide details if material) | - | - |
| 1.9 Net cash from / (used in) operating activities | (79) | (79) |

| | | |
|--|---|---|
| 2. Cash flows from investing activities | | |
| 2.1 Payments to acquire: | | |
| (a) property, plant and equipment | - | - |
| (b) tenements (see item 10) | - | - |
| (c) investments | - | - |
| (d) other non-current assets | - | - |

| Consolidated statement of cash flows | | Current quarter \$A'000 | Year to date (3 months) \$A'000 |
|---|---|------------------------------------|--|
| 2.2 | Proceeds from the disposal of: | | |
| | (a) property, plant and equipment | - | - |
| | (b) tenements (see item 10) | - | - |
| | (c) investments | - | - |
| | (d) other non-current assets | - | - |
| 2.3 | Cash flows from loans to other entities | - | - |
| 2.4 | Dividends received (see note 3) | - | - |
| 2.5 | Other (provide details if material) | - | - |
| 2.6 | Net cash from / (used in) investing activities | - | - |

| | | | |
|-------------|---|----------|----------|
| 3. | Cash flows from financing activities | | |
| 3.1 | Proceeds from issues of shares | - | - |
| 3.2 | Proceeds from issue of convertible notes | - | - |
| 3.3 | Proceeds from exercise of share options | - | - |
| 3.4 | Transaction costs related to issues of shares, convertible notes or options | - | - |
| 3.5 | Proceeds from borrowings | - | - |
| 3.6 | Repayment of borrowings | - | - |
| 3.7 | Transaction costs related to loans and borrowings | - | - |
| 3.8 | Dividends paid | - | - |
| 3.9 | Proceeds from intended issue of shares | - | - |
| 3.10 | Net cash from / (used in) financing activities | - | - |

| | | | |
|------------|--|------------|------------|
| 4. | Net increase / (decrease) in cash and cash equivalents for the period | | |
| 4.1 | Cash and cash equivalents at beginning of period | 288 | 288 |
| 4.2 | Net cash from / (used in) operating activities (item 1.9 above) | (79) | (79) |
| 4.3 | Net cash from / (used in) investing activities (item 2.6 above) | - | - |
| 4.4 | Net cash from / (used in) financing activities (item 3.10 above) | - | - |
| 4.5 | Effect of movement in exchange rates on cash held | - | - |
| 4.6 | Cash and cash equivalents at end of period | 209 | 209 |

| 5. Reconciliation of cash and cash equivalents at the end of the quarter (as shown in the consolidated statement of cash flows) to the related items in the accounts | Current quarter \$A'000 | Previous quarter \$A'000 |
|--|------------------------------------|-------------------------------------|
| 5.1 Bank balances | 209 | 288 |
| 5.2 Call deposits | - | - |
| 5.3 Bank overdrafts | - | - |
| 5.4 Other (provide details) | - | - |
| 5.5 Cash and cash equivalents at end of quarter (should equal item 4.6 above) | 209 | 288 |

6. Payments to directors of the entity and their associates

- 6.1 Aggregate amount of payments to these parties included in item 1.2
- 6.2 Aggregate amount of cash flow from loans to these parties included in item 2.3
- 6.3 Include below any explanation necessary to understand the transactions included in items 6.1 and 6.2

| Current quarter \$A'000 |
|------------------------------------|
| 17 |
| - |

6.1 includes directors' fees and directors' consulting fees.

7. Payments to related entities of the entity and their associates

- 7.1 Aggregate amount of payments to these parties included in item 1.2
- 7.2 Aggregate amount of cash flow from loans to these parties included in item 2.3
- 7.3 Include below any explanation necessary to understand the transactions included in items 7.1 and 7.2

| Current quarter \$A'000 |
|------------------------------------|
| - |
| - |

Mining exploration entity and oil and gas exploration entity quarterly report

| 8. | Financing facilities available <i>Add notes as necessary for an understanding of the position</i> | Total facility amount at quarter end \$A'000 | Amount drawn at quarter end \$A'000 |
|-----|--|---|--|
| | | | |
| 8.1 | Loan facilities | - | - |
| 8.2 | Credit standby arrangements | - | - |
| 8.3 | Other – Converting loans | - | - |
| 8.4 | Include below a description of each facility above, including the lender, interest rate and whether it is secured or unsecured. If any additional facilities have been entered into or are proposed to be entered into after quarter end, include details of those facilities as well. | | |

| |
|--|
| |
|--|

| 9. | Estimated cash outflows for next quarter | \$A'000 |
|-----|---|----------------|
| 9.1 | Exploration and evaluation | 50 |
| 9.2 | Development | - |
| 9.3 | Production | - |
| 9.4 | Staff costs | - |
| 9.5 | Administration and corporate costs | 100 |
| 9.6 | Other (provide details if material) | - |
| 9.7 | Total estimated cash outflows | 150 |

| 10. | Changes in tenements (items 2.1(b) and 2.2(b) above) | Tenement reference and location | Nature of interest | Interest at beginning of quarter | Interest at end of quarter |
|------|---|--|---------------------------|---|---|
| 10.1 | Interests in mining tenements and petroleum tenements lapsed, relinquished or reduced | Nil | | | |
| 10.2 | Interests in mining tenements and petroleum tenements acquired or increased | Nil | | | |

Compliance statement

- 1 This statement has been prepared in accordance with accounting standards and policies which comply with Listing Rule 19.11A.
- 2 This statement gives a true and fair view of the matters disclosed.



Sign here:
Company Secretary

Date: ...31 October 2016.....

Print name:Stephen Brockhurst.....

Notes

1. The quarterly report provides a basis for informing the market how the entity's activities have been financed for the past quarter and the effect on its cash position. An entity that wishes to disclose additional information is encouraged to do so, in a note or notes included in or attached to this report.
2. If this quarterly report has been prepared in accordance with Australian Accounting Standards, the definitions in, and provisions of, AASB 6: Exploration for and Evaluation of Mineral Resources and AASB 107: Statement of Cash Flows apply to this report. If this quarterly report has been prepared in accordance with other accounting standards agreed by ASX pursuant to Listing Rule 19.11A, the corresponding equivalent standards apply to this report.
3. Dividends received may be classified either as cash flows from operating activities or cash flows from investing activities, depending on the accounting policy of the entity.