

Works Finance (NZ) Limited	
<b>Results for announcement to the market</b>	
Reporting Period	6 months to December 2017
Previous Reporting Period	6 months to December 2016

	Amount (000s)	Percentage change
Revenue from ordinary activities	\$NZ6,363	(4%)
Profit (loss) from ordinary activities before tax attributable to security holder.	\$NZ6,317	(4%)
Net profit (loss) attributable to security holders.	\$NZ4,549	(4%)

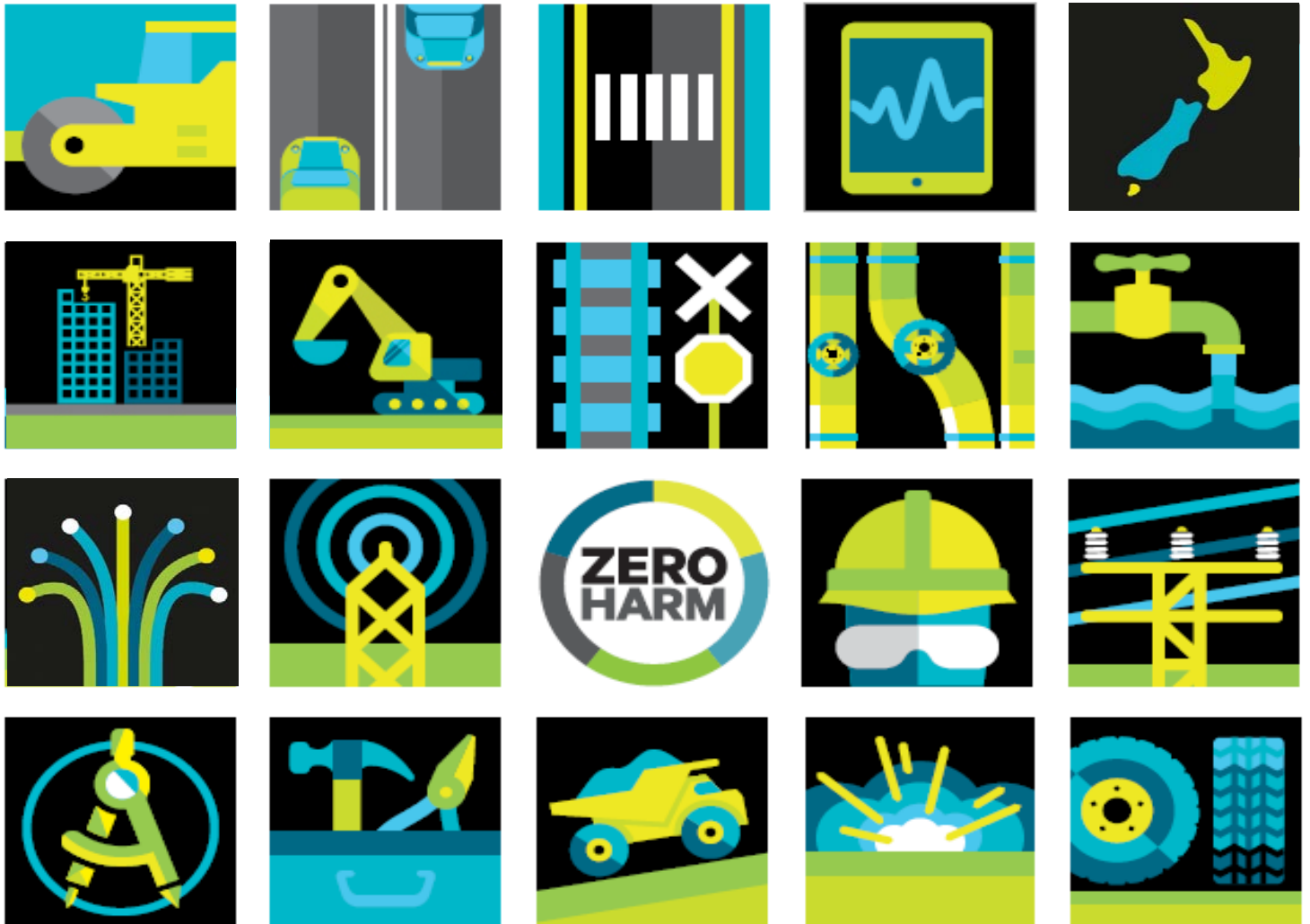
Interim/Final Dividend	Amount per security	Imputed amount per security
NZ\$0.010890	NZ\$0.010890	NZ\$0.004235

Record Date	6 March 2018
Dividend Payment Date	15 March 2018

Comments:	
-----------	--



# Condensed Half-year Financial Report 31 December 2017



## Relationships Creating Success

# Works Finance (NZ) Limited

# Contents

Directors' Report

**Page 3**

Auditors signed report

**Page 4** Independent Auditor's Review Report

Financial Statements






**Page 6** Condensed Statement of Comprehensive Income

**Page 7** Condensed Statement of Financial Position

**Page 8** Condensed Statement of Changes in Equity

**Page 9** Condensed Statement of Cash Flows

Notes to the Financial Statements

<u>A</u>	<u>B</u>	<u>C</u>	<u>D</u>	<u>E</u>
About this report	Business performance	Operating assets and liabilities	Capital structure	Other
Page 10	Page 10	Page 11	Page 12	Page 13
				
	<b>B1</b> Segment information	<b>C1</b> Advance - Downer New Zealand Limited	<b>D1</b> Issued capital	<b>E1</b> Financial instruments
	<b>B2</b> Taxation	<b>C2</b> Contingent Liabilities	<b>D2</b> Net tangible assets per security	<b>E2</b> Financial instruments risk management
	<b>B3</b> Subsequent Events		<b>D3</b> Lease commitments	

Other Information

**Page 14** Information for Investors

---

# Directors' Report

## for the half-year ended 31 December 2017

The Directors of Works Finance (NZ) Limited ("the Company") submit herewith the condensed financial report of the Company for the half-year ended 31 December 2017, including the financial statements on pages 6 to 13.

### Directors

The names of the Directors of the Company during or since the end of the financial half-year are:

Mr G A Fenn

Mr R W Jarrold (resigned 27 October 2017)

Ms J C Johnson (appointed 27 October 2017)

Mr S L Killeen (appointed 27 October 2017)

Mr P J Tompkins

### Principal activities

The Company is a subsidiary of Downer EDI Limited and was formed for the purpose of issuing Redeemable Optionally Adjustable Distributing Securities ("ROADS"). The proceeds have been advanced to Downer New Zealand Limited as disclosed in Note C1.

Downer EDI Limited elected to leave the ROADS securities on issue on the Step-up Date of 15 June 2012. The margin was stepped-up in accordance with the terms of the "Prospectus and Investment Statement" dated 7 March 2007. The dividend rate was reset on 15 June 2016 to 6.29% per annum and on 15 June 2017 to 6.05% per annum. The next reset date is 15 June 2018.

### Review of operations

The Company reported total comprehensive income of \$4,548,581 (2016: \$4,724,625).

### Subsequent events

There has not been any matter or circumstance other than that referred to in the financial statements or notes thereto, that has arisen since the end of the financial half-year, that has significantly affected, or may significantly affect, the operations of the entity, the results of those operations, or the state of affairs of the entity in subsequent financial years.

### Dividends

In respect of the half-year to 31 December 2017, dividends of \$4,356,000 were paid to the holders of ROADS (December 2016: \$4,528,801). Imputation credits were attached to the dividends. No dividends have been paid to the holders of ordinary shares during the half-year to 31 December 2017 (December 2016: nil).

### Interests register and other disclosures

S L Killeen holds 3,000 ROADS and J C Johnson holds 5,000 ROADS. There were no other entries in the Interests register. Related party transactions are disclosed in Note C1. No Director or former Director received any remuneration or other benefits from the Company. Works Finance (NZ) Limited has no employees and accordingly no remuneration was paid. No donations were made during the half-year ended 31 December 2017 (December 2016: nil). All audit fees were paid by

### Financial Statements

The Board of Directors have approved and authorised the condensed half-year financial statements on pages 6 to 13.

On behalf of the Directors 15 February 2018



S L Killeen  
Director



P J Tompkins  
Director

# Independent Review Report

To the shareholder of Works Finance (NZ) Limited

## Report on the interim financial statements

### Conclusion

Based on our review, nothing has come to our attention that causes us to believe that the interim financial statements on pages 6 to 13 do not:

- i. present, in all material respects the company's financial position as at 31 December 2017 and its financial performance and cash flows for the 6 month period ended on that date in compliance with NZ IAS 34 Interim Financial Reporting.

We have completed a review of the accompanying interim financial statements which comprise:

- the statement of financial position as at 31 December 2017;
- the statements of comprehensive income, changes in equity and cash flows for the 6 month period then ended; and
- notes, including a summary of significant accounting policies and other explanatory information.



### Basis for conclusion

A review of interim financial statements in accordance with NZ SRE 2410 *Review of Financial Statements Performed by the Independent Auditor of the Entity* ("NZ SRE 2410") is a limited assurance engagement. The auditor performs procedures, consisting of making enquiries, primarily of persons responsible for financial and accounting matters, and applying analytical and other review procedures.

As the auditor of Works Finance (NZ) Limited, NZ SRE 2410 requires that we comply with the ethical requirements relevant to the audit of the annual financial statements.

Other than in our capacity as auditor we have no relationship with, or interests in, the company.



### Use of this Independent Review Report

This report is made solely to the shareholder as a body. Our review work has been undertaken so that we might state to the shareholder those matters we are required to state to them in the Independent Review Report and for no other purpose. To the fullest extent permitted by law, we do not accept or assume responsibility to anyone other than the shareholder as a body for our review work, this report, or any of the opinions we have formed.



### Responsibilities of the Directors for the interim financial statements

The Directors, on behalf of the company, are responsible for:

- the preparation and fair presentation of the interim financial statements in accordance with NZ IAS 34 Interim Financial Reporting;





- implementing necessary internal control to enable the preparation of interim financial statements that are free from material misstatement, whether due to fraud or error; and
- assessing the ability to continue as a going concern. This includes disclosing, as applicable, matters related to going concern and using the going concern basis of accounting unless they either intend to liquidate or to cease operations, or have no realistic alternative but to do so.

---

## Auditor's Responsibilities for the review of the interim financial statements

Our responsibility is to express a conclusion on the interim financial statements based on our review. We conducted our review in accordance with NZ SRE 2410. NZ SRE 2410 requires us to conclude whether anything has come to our attention that causes us to believe that the interim financial statements are not prepared, in all material respects, in accordance with NZ IAS 34 Interim Financial Reporting.

The procedures performed in a review are substantially less than those performed in an audit conducted in accordance with International Standards on Auditing (New Zealand). Accordingly we do not express an audit opinion on these interim financial statements.

This description forms part of our Independent Review Report.

KPMG  
Auckland

15 February 2018

## Condensed Statement of Comprehensive Income for the half-year ended 31 December 2017

	Note	Unaudited 31-Dec 2017 \$	Unaudited 31-Dec 2016 \$
Interest received from Downer New Zealand Limited	C1	6,362,865	6,610,723
Operating expenses		(45,392)	(48,744)
<b>Profit before income tax expense</b>		<b>6,317,473</b>	<b>6,561,979</b>
Income tax expense	B2	(1,768,892)	(1,837,354)
<b>Profit after income tax expense and total comprehensive income attributable to members of the entity</b>		<b>4,548,581</b>	<b>4,724,625</b>

These condensed financial statements should be read in conjunction with the accompanying notes on pages 10 - 13.



## Condensed Statement of Financial Position as at 31 December 2017

		Unaudited 31-Dec 2017 \$	Audited 30-Jun 2017 \$
	Note		
<b>Current assets</b>			
Advance to related party - Downer New Zealand Limited	C1	6,607,225	7,390,289
<b>Total current assets</b>		<b>6,607,225</b>	<b>7,390,289</b>
<b>Non-current assets</b>			
Advance to related party - Downer New Zealand Limited	C1	200,000,000	200,000,000
<b>Total non-current assets</b>		<b>200,000,000</b>	<b>200,000,000</b>
<b>Total assets</b>		<b>206,607,225</b>	<b>207,390,289</b>
<b>Current liabilities</b>			
Cash and cash equivalents		111,435	112,177
Trade and other payables		17,150	25,200
Income tax payable		244,188	1,211,041
<b>Total current liabilities</b>		<b>372,773</b>	<b>1,348,418</b>
<b>Total liabilities</b>		<b>372,773</b>	<b>1,348,418</b>
<b>Net assets</b>		<b>206,234,452</b>	<b>206,041,871</b>
<b>Equity</b>			
Ordinary shares	D1	100	100
ROADS	D1	200,000,000	200,000,000
Retained earnings		6,234,352	6,041,771
<b>Total equity attributable to equity holders of the Company</b>		<b>206,234,452</b>	<b>206,041,871</b>

The Board of Directors have approved and authorised the condensed half-year financial statements on pages 6 to 13.

On behalf of the Directors



S L Killeen  
Director



P J Tompkins  
Director

Dated: 15 February 2018

These condensed financial statements should be read in conjunction with the accompanying notes on pages 10 - 13.

## Condensed Statement of Changes in Equity for the half-year ended 31 December 2017

	Share capital \$	ROADS \$	Retained earnings \$	Total \$
<b>Balance at 1 July 2016</b>	100	200,000,000	5,726,066	205,726,166
Profit for the half-year	-	-	4,724,625	4,724,625
<b>Total comprehensive income</b>	-	-	4,724,625	4,724,625
<b>Distributions to owners</b>				
Dividends paid - ROADS	-	-	(4,528,801)	(4,528,801)
<b>Balance at 31 December 2016 unaudited</b>	<b>100</b>	<b>200,000,000</b>	<b>5,921,890</b>	<b>205,921,990</b>
<b>Balance at 1 July 2017</b>	100	200,000,000	6,041,771	206,041,871
Profit for the half-year	-	-	4,548,581	4,548,581
<b>Total comprehensive income</b>	-	-	4,548,581	4,548,581
<b>Distributions to owners</b>				
Dividends paid - ROADS	-	-	(4,356,000)	(4,356,000)
<b>Balance at 31 December 2017 unaudited</b>	<b>100</b>	<b>200,000,000</b>	<b>6,234,352</b>	<b>206,234,452</b>

These condensed financial statements should be read in conjunction with the accompanying notes on pages 10 - 13.

## Condensed Statement of Cash Flows

for the half-year ended 31 December 2017

	Note	Unaudited 31-Dec 2017 \$	Unaudited 31-Dec 2016 \$
<b>Cash flows from operating activities</b>			
Interest received from Downer New Zealand Limited		6,362,865	6,610,723
Repayments from Downer New Zealand Limited		783,064	554,529
Income taxes paid and net tax credit transfers		(2,735,745)	(2,578,244)
Payments to suppliers		(53,442)	(40,274)
<b>Net cash generated by operating activities</b>		<b>4,356,742</b>	<b>4,546,734</b>
<b>Cash flows from financing activities</b>			
Dividends paid on ROADS		(4,356,000)	(4,528,801)
<b>Net cash used in financing activities</b>		<b>(4,356,000)</b>	<b>(4,528,801)</b>
<b>Net increase in cash and cash equivalents</b>		<b>742</b>	<b>17,933</b>
Cash and cash equivalents at the beginning of the period		(112,177)	(131,233)
<b>Cash and cash equivalents at the end of the period</b>		<b>(111,435)</b>	<b>(113,300)</b>

These condensed financial statements should be read in conjunction with the accompanying notes on pages 10 - 13.

# Notes to the Financial Statements

## for the half-year ended 31 December 2017



### A

#### About this report

##### Statement of compliance and basis of preparation

Works Finance (NZ) Limited (the Company) is a profit-oriented entity, domiciled in New Zealand, registered under the Companies Act 1993 and listed on the NZX Debt Market (NZDX). The Company is a FMC Reporting Entity under the Financial Markets Conduct Act 2013 and the Financial Reporting Act 2013.

The Company prepares its condensed half-year financial statements in accordance with Generally Accepted Accounting Practice in New Zealand (NZ GAAP).

These condensed half-year financial statements have not been audited. The condensed half-year financial statements comply with NZ IAS 34 *Interim Financial Reporting*. They also comply with IAS 34 *Interim Financial Reporting*.

The condensed half year financial statements have been prepared on the basis of historical cost. Cost is based on the fair value of the consideration given in exchange of assets. The functional and presentation currency is New Zealand dollars.

The condensed half-year financial statements do not include notes of the type normally included in an annual financial report and should be read in conjunction with the Annual Report for the year to 30 June 2017.

The same accounting policies, presentation and methods of computation are followed in the condensed half-year financial statements as applied in the Company's annual audited financial statements.

These condensed half-year financial statements were authorised by the Directors for issue on 15 February 2018.

##### Accounting estimates and judgements

The preparation of the condensed half-year financial statements requires management to make judgements, estimates and assumptions that affect the application of policies and reported amounts of assets, liabilities, income and expenses. Estimates and judgements made by management are consistent with those described in the 2017 Annual Report.



### B

#### Business performance

This section provides the information that is most relevant to understanding the financial performance of the Company during the half-year and, where relevant, the accounting policies applied and the critical judgements and estimates made.

##### B1. Segment information

##### B2. Taxation

##### B3. Subsequent Events

##### B1. Segment information

The Company operates in one reportable segment. The only business of the Company is the issue of ROADS to predominantly New Zealand residents and advances to Downer New Zealand Limited. There is no seasonality in the half-year result.

##### B2. Taxation

Interim period tax is accrued based on the estimated annual effective income tax rate of 28% (2016: 28%). Imputation credits available at 31 December 2017 were 2,020,294, (December 2016: 1,522,990).

##### B3. Subsequent Events

On 15 February 2018, the Directors approved the payment of a fully imputed dividend of \$3,025,000 comprising a cash dividend of \$2,178,000 (1.0890 cents per ROADS security) and imputation credits of \$847,000 (0.4235 cents per ROADS security) to be paid on 15 March 2018. There has not been any other matter or circumstance other than that referred to in the financial statements or notes thereto, that has arisen since the end of the financial period, that has significantly affected, or may significantly affect, the operations of the Company, the results of those operations, or the state of affairs of the Company in subsequent financial years.

# Notes to the Financial Statements

## for the half-year ended 31 December 2017



C

### Operating assets and liabilities

This section provides information relating to the operating assets and liabilities of the Company.

#### C1. Advance - Downer New Zealand Limited

#### C2. Contingent Liabilities

#### C1. Advance - Downer New Zealand Limited

	Unaudited 31-Dec 2017 \$	Audited 30-Jun 2017 \$
Downer New Zealand Limited - current account	6,607,225	7,390,289
Downer New Zealand Limited	200,000,000	200,000,000
	206,607,225	207,390,289

The Downer New Zealand Limited current account is unsecured and repayable on demand. Interest has been charged at an average of 1.7% (2016: 1.9%) per annum.

The Company has advanced \$200,000,000 to Downer New Zealand Limited under a loan agreement dated 21 April 2011. Under the terms of the loan agreement, the advance is repayable on demand, however it has been provided in line with the terms of ROADS.

ROADS were stepped up on 15 June 2012, keeping the existing ROADS instrument in place with revised pricing. Downer EDI Limited and the Company have provided confirmation to Downer New Zealand Limited that neither Downer EDI Limited, or its subsidiaries, will take any action to demand or effect repayment of the loan during the period to 15 February 2019.

The interest rate is to be agreed in writing between the parties from time to time. The initial rate of interest was set at 10% per annum. In April 2013 it was agreed to reset this to the ROADS gross dividend rate plus a margin of 0.20%. The interest rate from 15 June 2015 to 15 June 2016 was 7.41% per annum and from 15 June 2016 to 15 June 2017 6.49% per annum. On 15 June 2017 it was reset to 6.25% per annum. The next reset date is 15 June 2018.

Interest is paid monthly in arrears.

#### C2. Contingent Liabilities

The Company has no contingent liabilities. ( December 2016: nil)

# Notes to the Financial Statements

## for the half-year ended 31 December 2017



# D

## Capital Structure

This section provides information relating to the Company's capital structure. The capital structure of the Company consists of ROADS and ordinary shares.

### D1. Issued capital

### D2. Net tangible assets per security

### D3. Lease commitments

#### D1. Issued capital

	Unaudited 31-Dec 2017 \$	Audited 30-Jun 2017 \$
100 ordinary shares	100	100
200,000,000 ROADS	200,000,000	200,000,000
	200,000,100	200,000,100

The gross dividend rate from 15 June 2017 to the next reset date on 15 June 2018 is 6.05% per annum.

During the half-year to 31 December 2017, dividends paid, gross of imputation credits, totalled \$6.1 million (December 2016: \$6.3 million), being 3.025c per security (December 2016: 3.145c per security).

There were no changes to the number of ROADS on issue during the period.

#### D2. Net tangible assets per security

	Unaudited 31-Dec 2017 \$	Audited 30-Jun 2017 \$
ROADS	1	1
Ordinary shares	2,062,345	2,073,903

#### D3. Lease commitments

The Company has no capital or lease commitments. (December 2016: nil)

## Notes to the Financial Statements

### for the half-year ended 31 December 2017



# E

Other

This section provides details on other required disclosures relating to the Company to comply with the accounting standards and other pronouncements including the Company's capital and financial risk management disclosure.

#### E1. Financial instruments

#### E2. Financial instruments risk management

### E1. Financial instruments

Financial instruments carried in the statement of financial position include bank balances, advances, receivables, payables and accruals.

As at 31 December 2017, the carrying amounts and fair values of bank balances, advances, receivables, payables and accruals approximated fair value.

### E2. Financial instruments risk management

The Company was established by Downer EDI Limited for the purpose of issuing ROADS, and as such its exposure to liquidity risk and interest rate risk is managed by being passed back to other Group companies through issuing intra-group loan advances with similar terms to those issued by the Company.

#### Credit risk management

The most significant concentration of credit risk of the Company as at 31 December 2017 comprises the advance to Downer New Zealand Limited of \$200,000,000. This is expected to have a similar credit risk profile as Downer EDI Limited. Downer EDI Limited has a long-term issuer default rating of BBB (outlook stable) issued by Fitch Ratings. This rating was affirmed on 21 March 2017. Issues rated BBB- or above (or the equivalent by other rating agencies) are described as "Investment Grade".

The maximum exposure to credit risk is the carrying value of the Company's financial assets. The Company is not directly exposed to foreign currency risk. 99.8% of ROADS holders are domiciled in New Zealand.



---

## Information for Investors

### for the half-year ended 31 December 2017

#### Securities exchange listing

Works Finance (NZ) Limited is listed on the NZX Debt Market (NZDX) under code WKSHA.

#### Company information

The website of the Company's ultimate parent company Downer EDI Limited, [www.downergroup.com](http://www.downergroup.com), offers comprehensive information about Downer and its services. The site also contains news releases and announcements to the ASX and NZX, financial presentations, Annual Reports, Half Year Reports and company newsletters.

#### Auditor

KPMG  
18 Viaduct Harbour Ave  
Auckland 1010  
New Zealand

#### Waivers

The NZX has ruled that the ROADS are not Equity Securities as defined in, and for the purpose of, the NZDX Listing Rules. The NZX granted a waiver on 7 March 2007 relating to the minimum subscription amount for applications in respect of the offer of ROADS.

#### Corporate governance

Works Finance (NZ) Limited does not have any specific policies, practices or processes in respect of its corporate governance. However, where relevant, Works Finance (NZ) Limited, as a member of the Downer Group, is subject to the corporate governance policies of Downer EDI Limited.

The corporate governance policies of Downer EDI Limited are set out in its Annual Report, which is prepared in accordance with the requirements of ASX Listing Rules. The corporate governance policies and annual report are available on the Downer EDI Limited website at [www.downergroup.com](http://www.downergroup.com)

The corporate governance policies of Downer EDI Limited, as set out in its annual report dated 30 June 2017, do not materially differ from the Corporate Governance Best Practice Code.

#### Registered office

130 Kerrs Road, Wiri, Auckland, 2104

#### Share registry

ROADS holders seeking information about holdings or dividends should contact the Company's share registry, Computershare Investor Services Limited (Computershare):

Level 2, 159 Hurstmere Road  
Takapuna, Auckland 0622  
Email: [enquiry@computershare.co.nz](mailto:enquiry@computershare.co.nz)  
Tel: +64 9 488 8777

#### Updating your holder details

ROADS holders can update their details, including bank accounts, payment instructions and view their investment portfolio and transactions at: [www.investorcentre.com/nz](http://www.investorcentre.com/nz)