

# DYNASTY METALS AUSTRALIA LTD

AGM – 28<sup>th</sup> November 2008, Sydney

## Disclaimer:

Certain statements contained in this presentation, including information as to the future financial or operating performance of Dynasty Metals and its projects, are forward-looking statements. Such forward-looking statements:

- are necessarily based upon a number of estimates and assumptions that, while
- considered reasonable by Dynasty Metals, are inherently subject to significant
- technical, business, economic, competitive, political and social uncertainties and contingencies;
- involve known and unknown risks and uncertainties that could cause actual events or results to differ materially from estimated or anticipated events or results reflected in such forward-looking statements; and
- may include, among other things, statements regarding targets, estimates and
- assumptions in respect of metal production and prices, operating costs and results, capital expenditures, mineral reserves and mineral resources and anticipated grades and recovery rates, and are or may be based on assumptions and estimates related to future technical, economic, market, political, social and other conditions.

Dynasty Metals disclaims any intent or obligation to update publicly any forward-looking statements, whether as a result of new information, future events or results or otherwise.

1. Corporate Overview
2. Business Development Strategy
3. 2009/2010 Exploration Priorities

AGM - November 2008

# CORPORATE OVERVIEW

# CORPORATE OVERVIEW

- ASX Code: DMA
- Issued Shares: 55,631,312
- Total Number of Shareholders: 560+

## Options:

- 35c expires on 28/02/2010: 20,917,092 ( Underwriting )
- 20c expires on 30/11/2009: 5,150,000 ( Corp Consultants )
- 30c expires on 31/12/2009: 500,000 ( Employee option )
- Cash and Asset Position: +\$3.0m

November 2008

# DYNASTY'S PROJECTS

# EXPLORATION PROJECTS

1. Coal and Coal Seam Gas – Irwin River (WA) and Tiaro Coal JV (QLD)
2. Prairie Downs and Warramboos – Iron Ore evaluation
3. Bendoc (Vic) and Southern Cross/Hyden – Gold evaluation
4. Stanley, Nabberu – Base metals, gold and uranium evaluation
5. WA and NT Uranium – evaluation and joint venture

## Objective:

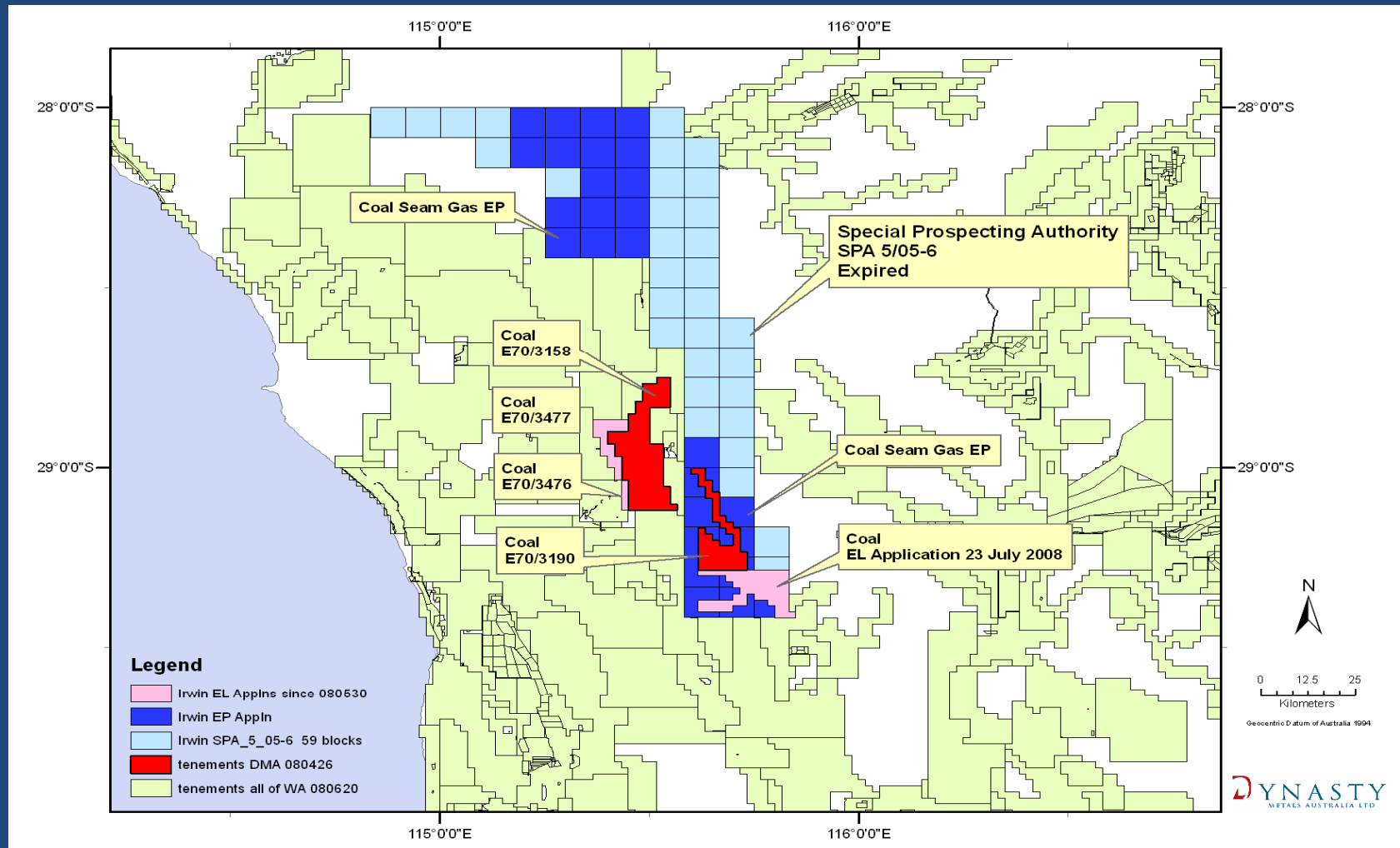
*Exploration designed to efficiently and cost effectively advance our geological understanding of projects towards targeted drilling and to JORC defined resource estimates where mineral occurrences support such calculations.*

# Project Locations



# Irwin Coal / Coal Seam Gas

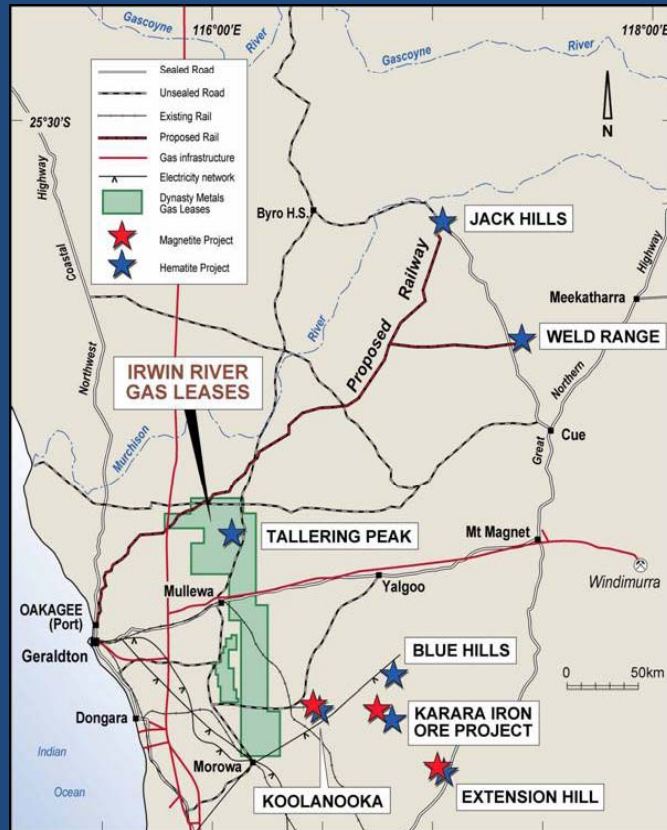
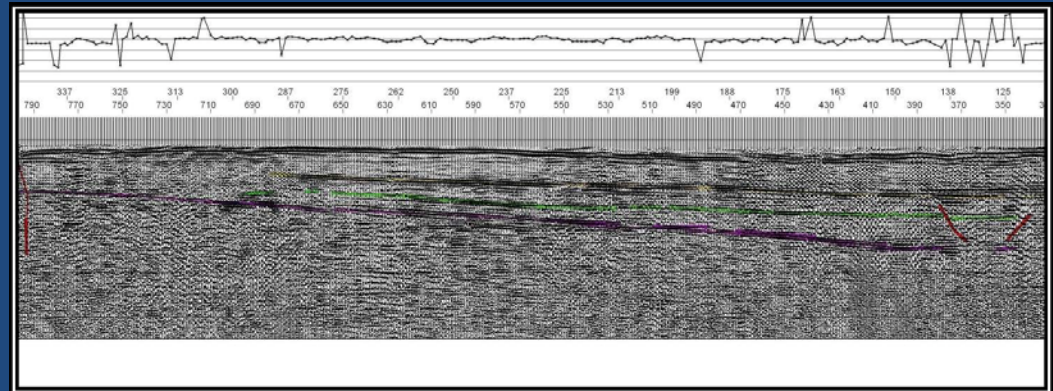
- Dynasty has applications for 5 coal EL's covering 762km<sup>2</sup> and 2 petroleum EL's in the northern Perth Basin, in the gas producing region east of Dongara
- These tenements were secured following evaluation of a special prospecting area





# Coal Seam Evidence from Seismic Data

DMA is exploring these areas for coal and coal seam methane. Natural Gas is exploited from the Dongara region.

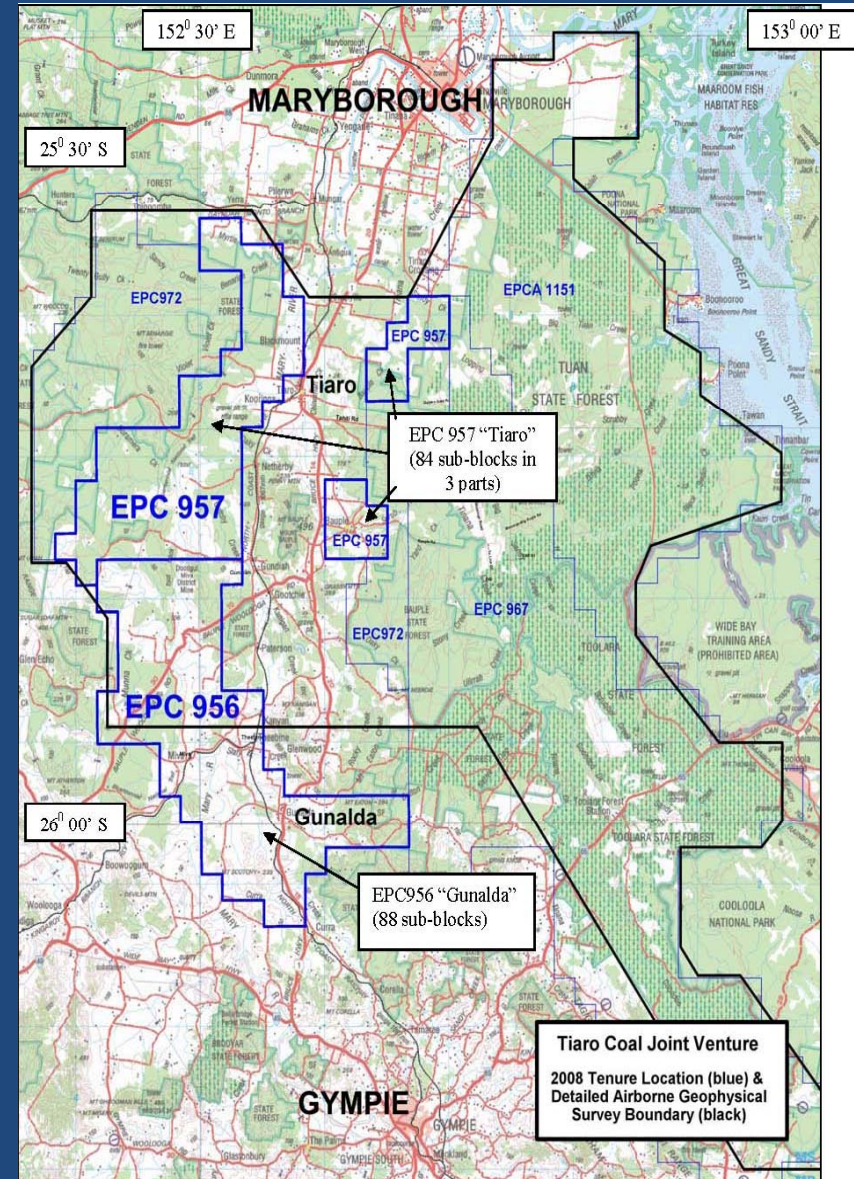


Exploration targeting coal seam methane has not been undertaken in the area although oil and gas explorers have reported gas flows when drilling the Irwin River Coal Measures.

The tenements are well located for development with respect to existing gas reticulation infrastructure, resource projects and regional ports and railways

# Tiaro Coal JV

- EPC 956 and EPC 957 are located over the Tiaro Coalfield within the Mesozoic Maryborough Basin of SE QLD, between Gympie and Maryborough, (total area 516 km<sup>2</sup>)
- The tenements form part of the Tiaro Coal JV. DMA is farming in to the areas and has the right to earn up to 51% in the JV.
- A drilling programme was completed in Nov08 and the results are being evaluated, coal measures of economic thickness were identified



# Prairie Downs

The Prairie Downs (granted) tenements cover an area of about 1390km<sup>2</sup> located at 30km west of the rail head at Mt Newman – prospective for channel iron deposits and Marramamba Formation iron deposits – base metals (copper) also discovered in the area.

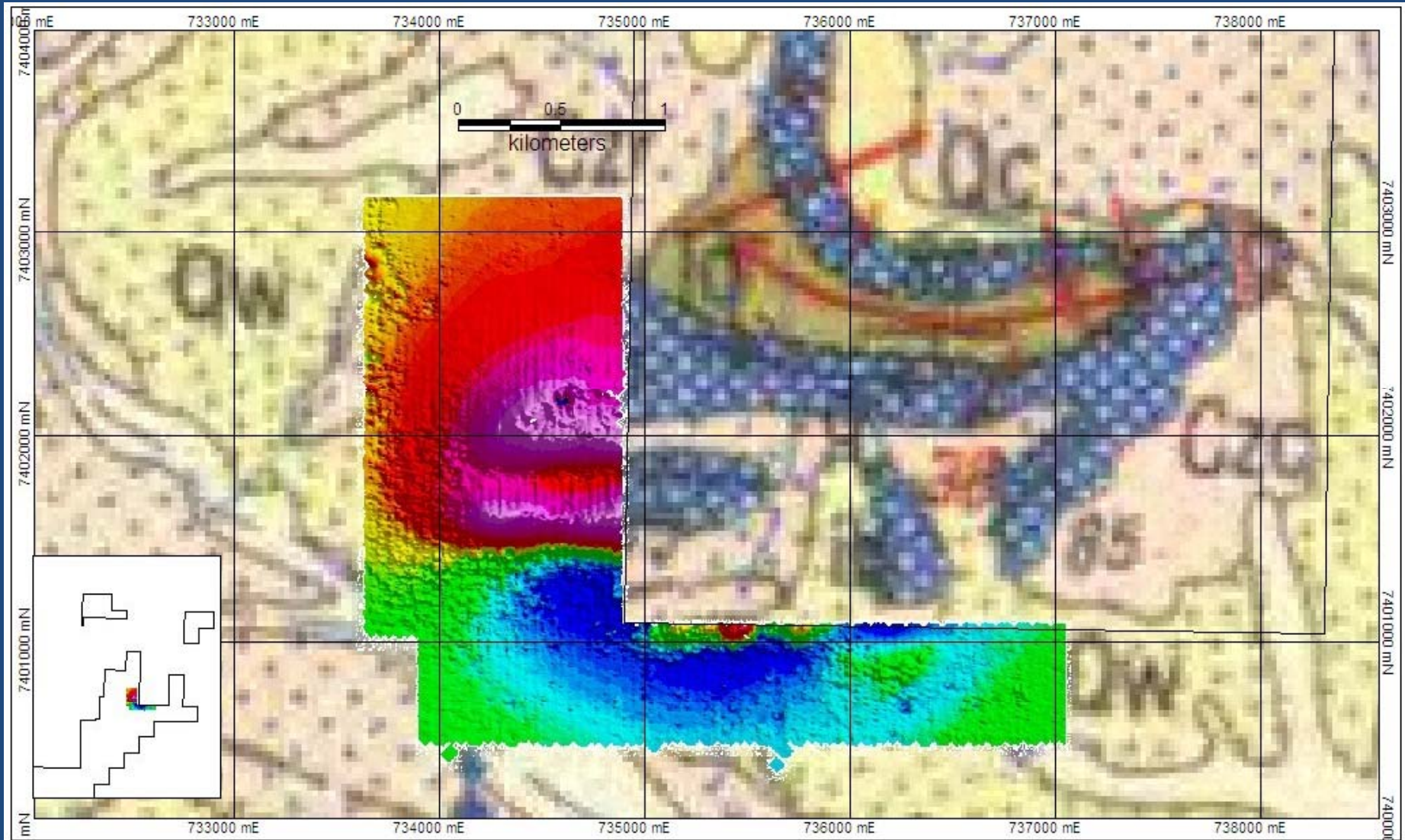




# Prairie Downs Iron Outcrop



# Prairie Downs Ground Magnetics = Magnetite Rich Banded Iron Formation



# Prairie Downs Iron / Copper Outcrop



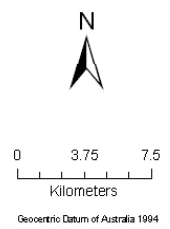
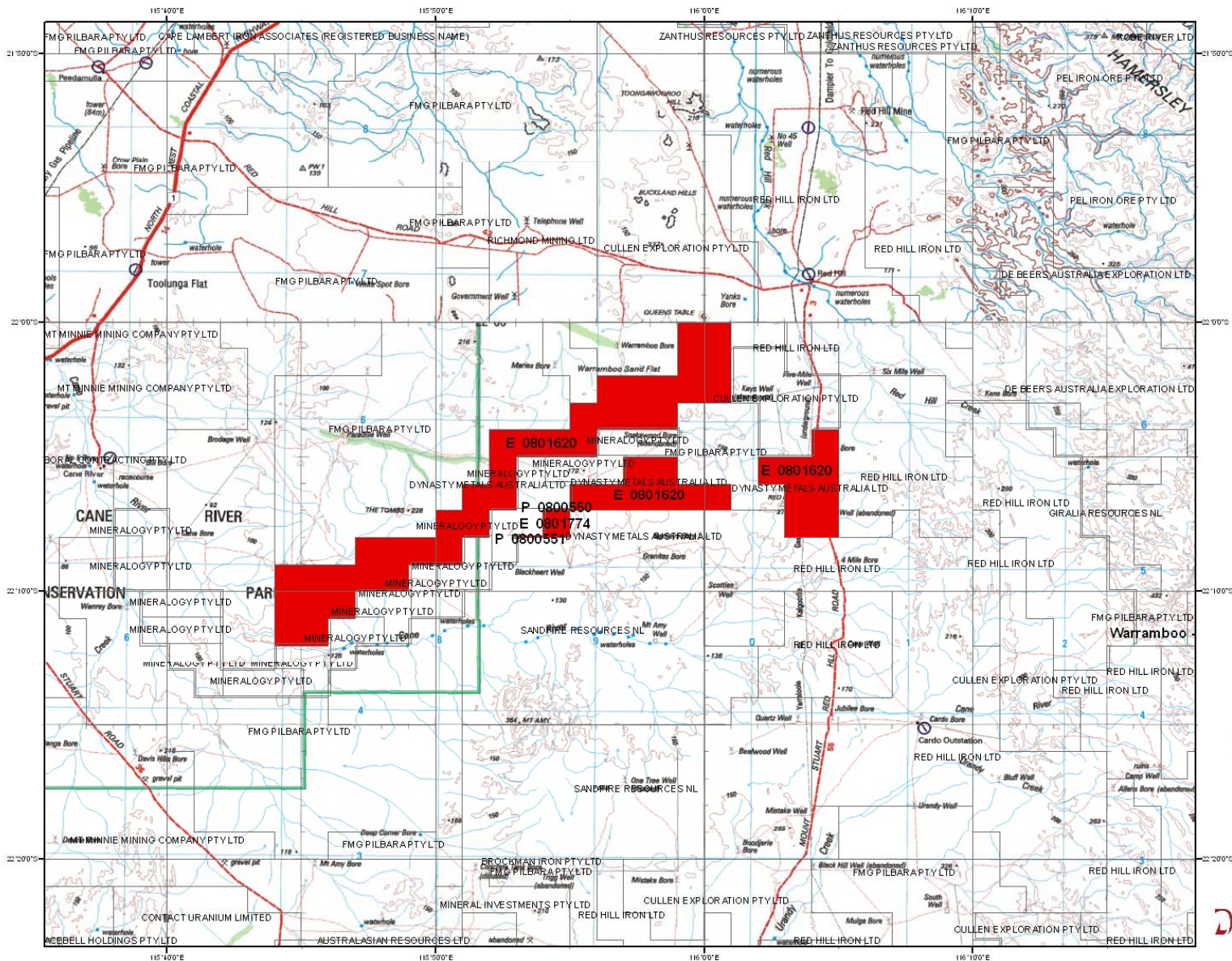
# Warrambo

The Warrambo tenements cover an area of 159.5km<sup>2</sup> and are located in the Pilbara ~100km east of the coastal township of Onslow and 50km south of the rail head at Robe River.





# Warrambooo Tenements

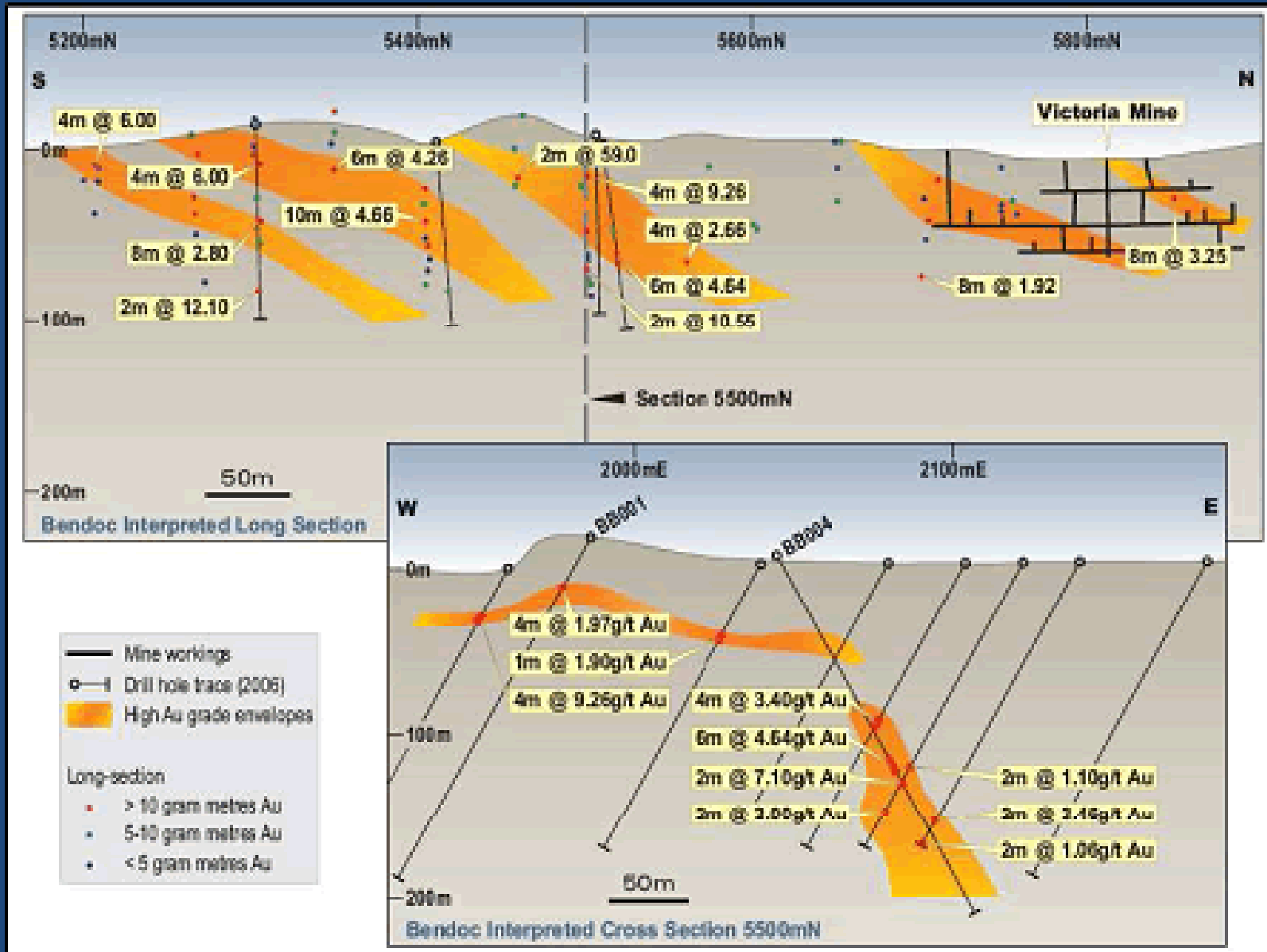


# Warrambo Iron Outcrop





# Economic Gold Grade Intersections



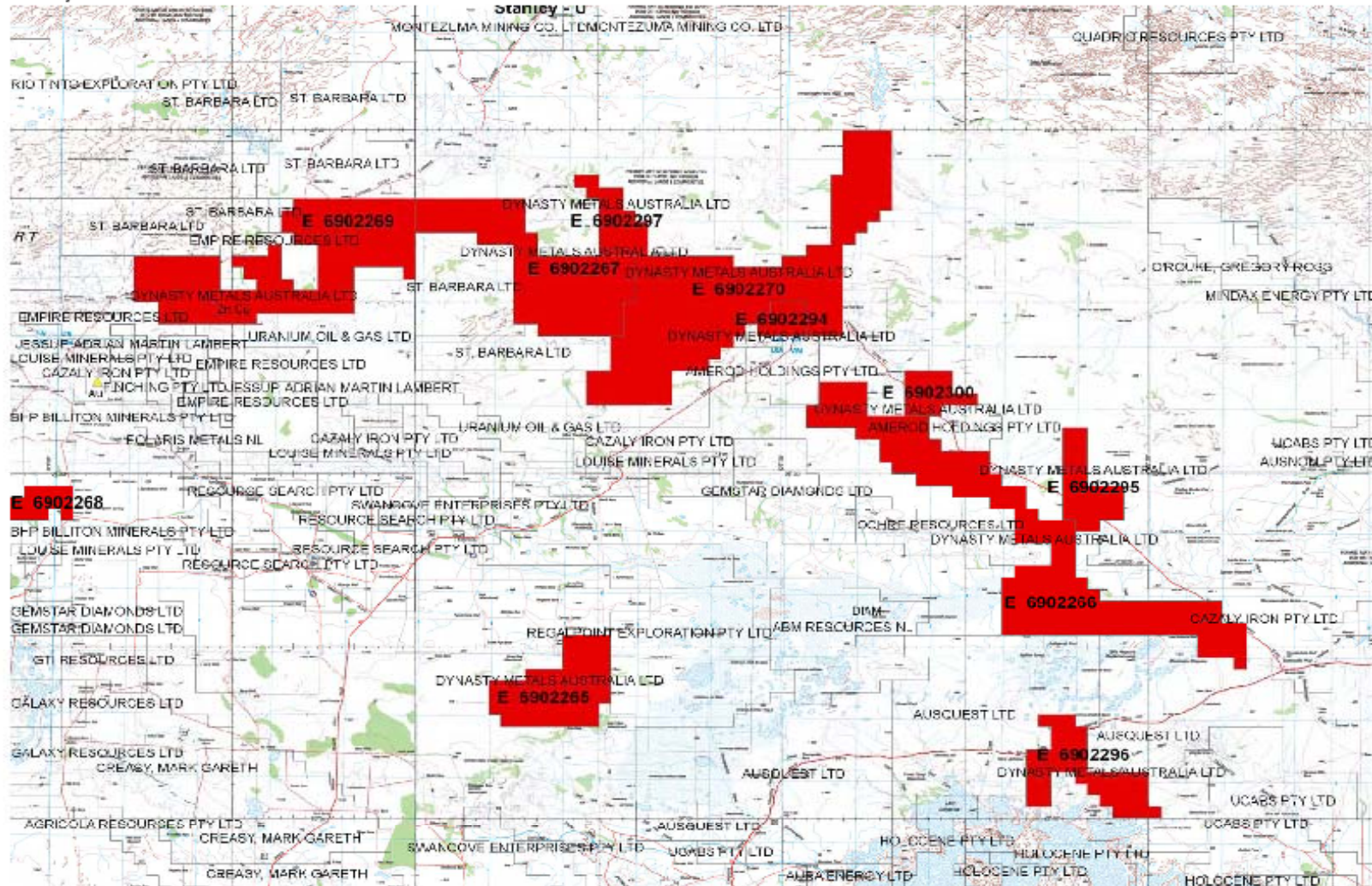


# Stanley-Nabberu

- The company has applied for 7 exploration licenses at Nabberu (1,923km<sup>2</sup>) and Stanley covering and (687km<sup>2</sup>)
- The Nabberu and Stanley Projects are considered prospective for valley and playa-type calcrete-hosted uranium mineralisation
- At Fyfe Well Uranium prospect several radiometric anomalies were identified and follow up sampling by Esso returned encouraging results ranging from 56 to 225ppm U
- Dynasty's Windich Spring Project is situated 8 km north west of the Fyfe Well prospect

# Stanley – tenements

## Stanley



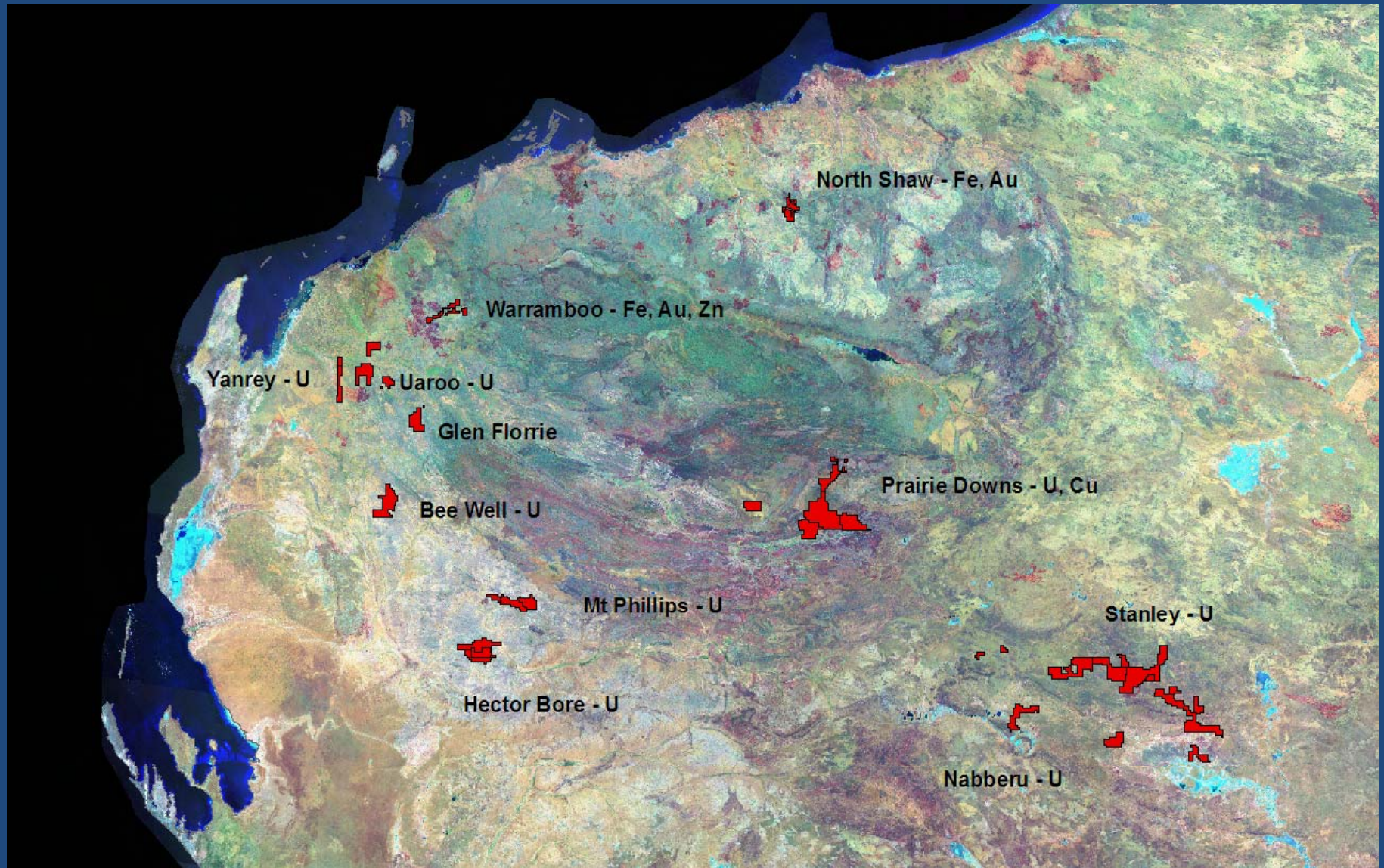




# Uranium Portfolio

- **WA** (total area 2172 km<sup>2</sup>)
  - Yanrey: 435 km<sup>2</sup>
  - Uaroo: 69 km<sup>2</sup>
  - Bee Well: 324 km<sup>2</sup>
  - Hector Bore: 495 km<sup>2</sup>
  - Mt Philips: 327 km<sup>2</sup>
  - Carnegie: 330 km<sup>2</sup>
  - Glen Florrie: 192 km<sup>2</sup>
- **NT** (total area 311 km<sup>2</sup>)
  - Hanson River: 120 km<sup>2</sup>
  - Possum Creek: 5 km<sup>2</sup>
  - Mt Weldon: 70 km<sup>2</sup>
  - Peak Hill: 116 km<sup>2</sup>
- **Botswana** (total area 5346 km<sup>2</sup>)

# Iron Ore, Base Metals and Uranium Tenements - WA



# EXPLORATION PRIORITIES

# BUSINESS DEVELOPMENT STRATEGY

1. Undertake essential exploration to enhance value of tenements and to keep all prospective tenements in good standing.
2. Carry out prudent and systematic exploration in phases so as to optimise geological understanding, progression towards resource definition.
3. Seek suitable joint venture partners who are prepared to participate in projects by way of farm-in expenditure.
4. Identify possible strategic relationships, and new opportunities compatible with or proximal to tenement holdings to add value to current portfolio.

# 1<sup>o</sup> Exploration Programme – 2009/10

## Irwin River Coal and Coal Seam Gas

### Phase 1 – Geological Evaluation, Target Generation:

Desktop:

Data acquisition and evaluation

Previous exploration compilation

Geophysics compilation and processing, identification of targets

### Phase 2 – Geophysics follow-up, Drill Target Generation:

Geophysical programmes and interpretation

Drill target definition

Phase 3 – Resource Drilling

RC and Diamond Drilling

# 1<sup>o</sup> Exploration Programme – 2009/10

## Tiaro Coal Joint Venture 15% earning to 51%

Review October 08 Drilling results

Carry out follow-up Phase 1 resource drilling programme

Detailed (Phase 2) resource drilling

# 1<sup>o</sup> Exploration Programme – 2009/10

## Bendoc Gold Project

Complete desktop review of historical results and determine drill sites

Carry out confirmation resource drilling programme

Complete resource estimates and in-fill drilling as required

Calculate resource estimates

Subject to resource results, calculate reserves and prepare preliminary mine plan, feasibility study

Subject to pre-feasibility results carry out final, bankable feasibility study

# 1<sup>o</sup> Exploration Programme – 2009/10

## Prairie Downs

### Phase 1 – Geological Evaluation, Target Generation:

#### Desktop:

ASTER data acquisition and evaluation

Previous exploration compilation

Geophysics compilation and processing, identification of targets for ground follow up or gaps in the data for airborne surveys

#### Geophysics:

Ground Magnetics in the Bulloo Copper Occurrences.

Ground Magnetics in the Prairie Downs areas to identify extensions to the Marra Mamba formation below recent alluvials.

Scintillometer study in the areas of radiometric anomalies.

Gravity Survey in the Northern part of the tenement to try and identify CID.



# 1<sup>o</sup> Exploration Programme – 2009/10

## Prairie Downs continued:

### Geological:

Detailed prospecting, mapping and sampling of the Bulloo Copper Occurrences.

Regional prospecting, mapping and sampling of the Southern tenements.

Soil sampling over the Bulloo Copper Occurrences.

Soil sampling over targets identified during regional mapping.

## Phase 2 – Resource Estimation:

### Native Title Clearances

Site preparation.

RAB/Reverse Circulation - drilling of potential CID, Northern Iron (BIF) and Central Iron (CID/Conglomerate ) Prospects 2000m drilling.

RAB/Aircore Drilling Bulloo Copper Occurrences 2000m drilling

RAB/Aircore Drilling Uranium targets and other targets generated in Phase 1 1000m.

# 2<sup>o</sup> Exploration Programme – 2009/10

## Stanley Nabberu

Phase 1 – Geological Exploration, Target Generation:  
Native Title negotiations.

Desktop

ASTER data acquisition and evaluation

Previous exploration compilation

Geophysics compilation and processing, identification of targets for ground follow up or gaps in the data for airborne surveys

Geophysics:

Airborne EM survey – EM can identify sulphidic bodies for base metal and N-Cu-PGE deposits as well as potential paleochannels.

Geological:

Regional prospecting, mapping and sampling.

Stream sampling or regional soils in areas where no previous work has been completed.

Soil sampling over targets identified during regional mapping.

# 2<sup>o</sup> Exploration Programme – 2009/10

## Stanley Nabberu – continued:

### Phase 2 – Resource Drilling:

#### Geophysics

Ground geophysics follow up of targets identified in regional work  
magnetics/Radiometrics/EM or IP

#### Geological

Detailed mapping and sampling of identified prospects for Base metals.  
Soil sampling.

#### Drilling.

Native Title Clearances

Site preparation.

RAB/Aircore Drilling of best paleochannel targets for Uranium. 3000m

# 2<sup>o</sup> Exploration Programme – 2009

## Warrambo

### Phase 1 – Geological Evaluation, Target Generation:

#### Desktop:

ASTER data acquisition and evaluation.

Previous exploration compilation

#### Ground Geophysics:

Gravity surveys to identify potential paleochannels with CID.

Scintillometer Surveys

#### Geological

Regional Mapping with soil and rockchip sampling.

### Phase 2 – Preliminary Exploration

Native Title Clearances

Site preparation.

RAB drilling of potential CID 2000m drilling.

# 3<sup>o</sup> Exploration Programme – 2009/10

## Uranium Projects WA and NT

### Phase 1 – Geological Evaluation, Target Generation:

#### Desktop:

ASTER data acquisition and evaluation.

Previous exploration compilation

#### Ground Geophysics:

Gravity surveys to identify potential paleochannels with CID.

Scintillometer Surveys

#### Geological

Regional Mapping with soil and rockchip sampling.

### Phase 2 – Preliminary Exploration

#### Native Title Clearances

Site preparation.

RAB drilling of potential CID 2000m drilling.

# Thank you

*Qualifying statement:*

*Malcolm Carson has compiled the information in this report from information supplied by Dynasty Metals Limited. Malcolm Carson has sufficient experience that is relevant to the style of mineralisation and type of deposit under consideration and to the activity that he is undertaking to qualify as a Competent Person as defined in the 2004 Edition of the Australasian Code for Reporting of Exploration Results. Mr Carson consents to the inclusion in the report of the matters based on his information in the form and context in which it appears.*