

6 August 2009

Companies Announcement Office
Australian Securities Exchange Limited
Level 6
20 Bridge Street
Sydney NSW 2000

Via E-lodgement

Exploration Program Update

Hammerhead Prospect - Okatumba Licence (EPL4129)

Avonlea Minerals Limited ("Avonlea") advises of the successful completion of the first pass reconnaissance program on the Hammerhead Prospect located within the Okatumba Exclusive Prospecting Licence ("EPL") 4129 in north western Namibia.

Mapping of Hammerhead is continuing and samples from this initial reconnaissance program over the area highlighted in Figure 1; have been dispatched and assay results are awaited. The results are anticipated to be available during the month of September.

The Hammerhead Prospect had previously been identified from Remote Sensing data delineating an anomalous magnetic signature and is believed to host large scale Fe mineralisation. The program confirmed the prospectivity of localised exploration target(s) and the Company has accelerated and expanded its sampling and reconnaissance program over a wider area. Exploration concepts are now being developed for application over this wider geographical setting and on ground activity is expected to commence on 15 August.

The program will be conducted by Avonlea's Exploration Manager, Chris Shaw and the company will continue with its commitment to develop local community involvement by continuing to utilise local labour to assist with logistics and sample collection.



Sampling of outcropping iron mineralisation at the 'Tack' prospect immediately south of Hammerhead.

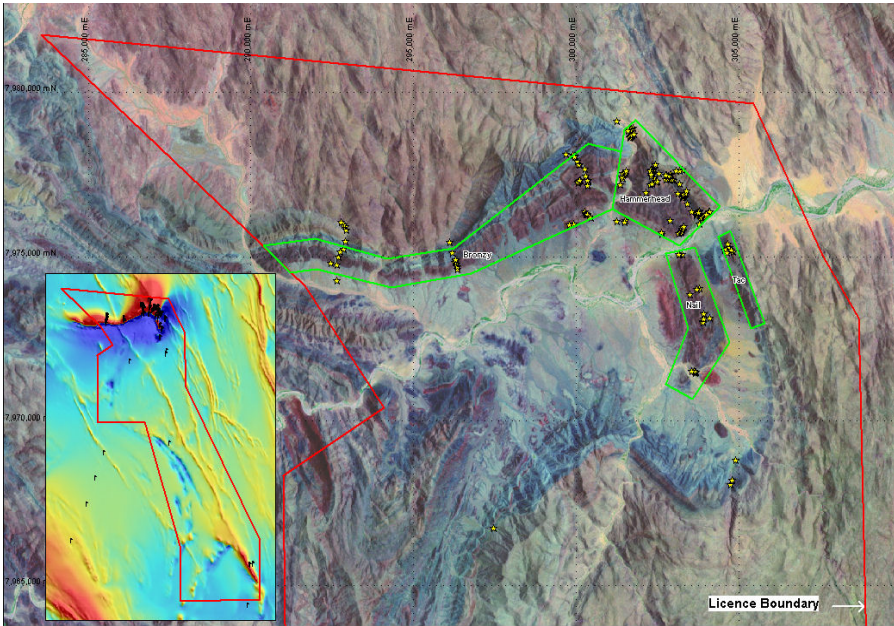


Figure 1: Sample and iron prospect locations within the northern section of the Okatumba licence area. LandSat image as background to main image has been enhanced to highlight likely iron mineralisation (red). Inset image shows licence area over TMI magnetic background.

Rhinelands Copper Project (EPL3840)

The Company's current copper project in northern Namibia has received better than expected assay results from the sample that was submitted to assess the potential for the heap leaching of outcropping copper oxide mineralisation. Results from the initial assay work indicate good recovery of the contained copper with over 90% of the contained copper being liberated with sulphuric acid leaching.

The grade of the material submitted for assay was 2.87% Cu as determined by a four acid digest, where the sulphuric acid leach returned a grade of 2.61% for the same material giving the 90.9% recovery by acid leaching.

Historical diamond drilling at the Block G prospect returned 19.3m @ 1.53% Cu and 35.7 g/t Ag from 25m, indicating continuity of mineralisation at depth.

The sample reported here was collected during a brief site visit, and consisted of several grab samples from the Block G and Block E prospects, covering a total strike length of approximately 400m.

Work is ongoing at this project and future programs include detailed surface mapping, and drilling.



Sampling outcropping copper mineralisation at the Block E Prospect.

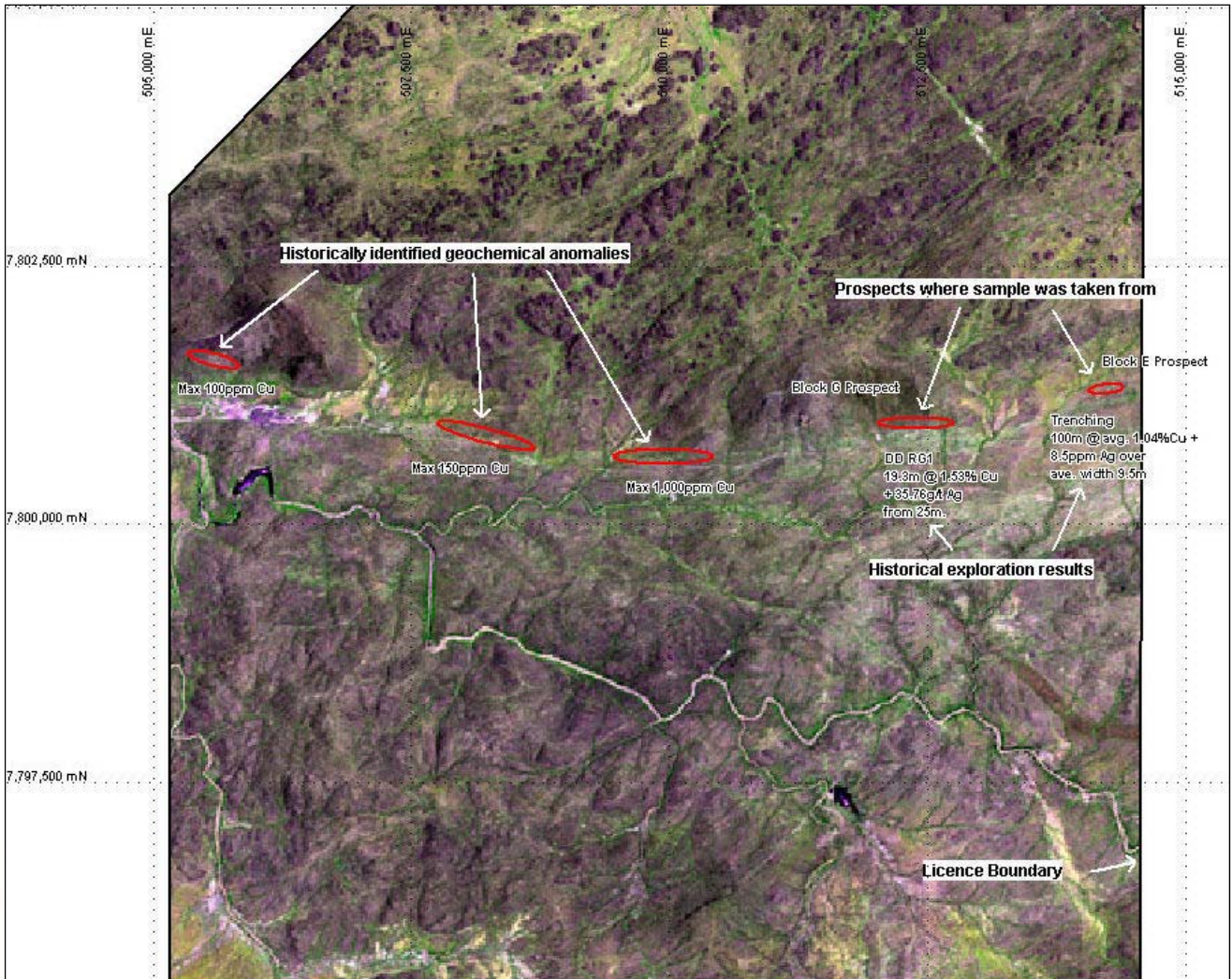


Figure 2: Rhinelands Project with historical copper geochemical anomalies and prospect locations. The sample referred to in this announcement was collected from the Block G and Block E prospects.

Yours Faithfully

David Riekie
Managing Director

The information in this report that relates to Exploration Results, Exploration Targets, Minerals Resources or Ore Reserves is based upon information compiled by Mr Chris Shaw who is a member of The Australian Institute of Mining and Metallurgy. Mr Chris Shaw is a consultant to the Company. Mr Chris Shaw has sufficient experience which is relevant to the style of mineralisation and type of deposit under consideration and to the activity which he is undertaking to qualify as a Competent Person as defined in the 2004 edition of the 'Australasian Code for the Reporting of Exploration Results, Mineral Resources and Ore Reserves'. Mr Shaw consents to the inclusion in the report of the matters based on his information in the form and context in which it appears.

About Avonlea

Avonlea Minerals Limited (ASX:AVZ) is an Australian publicly listed exploration company based in Perth, Western Australia. While Avonlea has gold and base metal interests in Central Queensland and iron ore rights to the Diemals Iron Ore Project in Western Australia, the Company's focus will be its issued Exclusive Prospecting Licences (EPLs) in Namibia.

Namibia is generally considered to be one of the more desirable places in Africa to explore for minerals based on the stable political environment and mining culture.

Avonlea acquired 95% of the issued capital in Eris Mining (Pty) Ltd ("Eris"), a Namibia incorporated Exploration Company. Eris has commenced exploration on its EPL's which are considered highly prospective for iron ore, copper, gold and rare earths/metals. Eris also holds a large Exclusive Reconnaissance Licence ("ERL"). Collectively, these licences provide scope to explore approximately 12,000km².

For further information please contact:

David Riekie, Managing Director +61 419 994 301

david.riekie@avonleaminerals.com.au

Joanna Kiernan, Company Secretary +61 412 241 292

Joanna.kiernan@avonleaminerals.com.au

www.avonleaminerals.com.au

