

## Drilling Confirms Strike Extension - Analytic One Target

---

### Highlights

- Significant step-out intercept received from the **Analytic One** target, including:
  - **3m @ 7.76 g/t Au from 225m**
- Intersection confirms the Analytic One mineralised structure 30 metres to the west of Emmerson's maiden drill hole ANRC001 which returned **24m @ 6.27g/t Au from 246m incl. 3m @ 48.3g/t Au** from 264m.

### Announcement

Emmerson Resources Limited (ASX: ERM – “Emmerson”) is pleased to report that it has received initial three-metre composite fire assay samples from their Reverse Circulation (RC) drilling program designed to establish strike and dip continuity from their **Analytic One** target, within the Tennant Creek Mineral Field (TCMF), Northern Territory (Fig 1).

RC drill hole ANRC003 was drilled to establish up-dip mineralisation extent while drill hole ANRC004 (Fig 2) was drilled to investigate westerly strike continuance of mineralisation identified in Emmerson's maiden drill hole ANRC001 which returned a result of **24m @ 6.27g/t Au from 246m**, including 3m @ 48.3g/t Au from 264m, drilled in November 2008 (Fig 3).

Analytic One is an undercover target that is manifested as a diffuse magnetic anomaly, broadly coincident with the highly mineralised “Chariot Line” but offset to the north along a major reactivated fold (Fig 2). The Analytic One target which lies approximately 6km west of the Tennant Creek township on Perpetual Pastoral Lease 1142, within EL 23284 forms one of the Company's Greenfields exploration targets that was initially tested in last year's exploration program.

ANRC003 (up-dip test) was drilled to 257m piercing above the magnetic model at the expected target position. No iron-oxide body (which hosts the gold mineralisation in ANRC001) was intersected. As a result, no anomalous gold or base metal assays were returned. This hole has been successful in constraining the top of the magnetic model, indicating deeper drilling may be required as mineralisation remains open at depth (Fig 3).



ANRC004 (westerly strike test) was drilled to 335m to intersect the interpreted magnetic model 30 metres to the west of the original intersection returned from ANRC001 (Fig 2).

The hole successfully pierced the required position and returned a three metre composite fire assay result of **3m @ 7.76 g/t Au from 225m** (Table 1). Individual samples from this interval have been dispatched to the Laboratory for fire assay with results anticipated early June 2009.

Gold mineralisation within ANRC004 occurs not within the massive haematite-chlorite-magnetite ironstone as seen in ANRC001 yet is contained within an iron-oxide alteration halo, dominated by chlorite and magnetite within the surrounding sediments. Down-hole magnetic data is currently under review and our belief is that the host ironstone (as drilled in ANRC001) may actually be deeper and that we have passed over the target body.

The gold mineralisation identified in ANRC004 is supported by several other anomalous elements including copper, lead and bismuth which are proven indicators (pathfinders) for Tennant Creek iron-oxide copper gold systems (Table 1).

Once the individual metre samples are returned and mineralisation confirmed, additional drilling will be required. A large proportion of the modelled magnetic body remains undrilled (open) to the east of ANRC001 with mineralisation also open down plunge of both ANRC001 and ANRC004 (Fig 3).

Further exploration will now be funded by Ivanhoe Australia Limited as part of their \$18.0 million, 3 year Farm-In to earn a 51% interest in the majority of Emmerson's Tennant Creek tenement package as announced to the ASX on 16th April 2009.

Yours sincerely

A handwritten signature in black ink that reads 'RTBills'.

**Mr. Rob Bills**  
**Managing Director and Chief Executive Officer**



**Media Enquiries:**  
**Nicholas Read**  
**Read Corporate**  
**Telephone: (+61-8) 9388 1474**

**Released by:**  
**Mr Rob Bills**  
**Managing Director & Chief Executive Officer**  
**Emmerson Resources Ltd**  
**Telephone: (+61-8) 9381 7838**  
[www.emmersonresources.com.au](http://www.emmersonresources.com.au)

### ***Competency Statement***

*The information in this report relating to Exploration Results and Mineral Resources is based on information compiled by Mr Steve Russell who is a Member of the Australian Institute of Geoscientists and has sufficient exploration experience which is relevant to the style of mineralisation under consideration to qualify as a Competent Person as defined in the 2004 Edition of the 'Australasian Code for Reporting of Exploration Results, Mineral Resources and Ore Reserves'. Mr Russell is a full time employee of Emmerson Resources Ltd and consents to the inclusion in the report of the matters based on his information in the form and context in which it appears. (attachments: Figures 1, 2, 3, Table 1).*



**Table 1. Significant RC drilling results from the Analytic One Prospect**

Hole Number	East (GDA)	North (GDA)	RL (GDA)	Dip (deg)	Azi (deg)	From (m)	To (m)	Width (m)	Gold (g/t)	Cu (%)	Bi (ppm)	Fe (%)	Pb (ppm)	Zn (ppm)
ANR004	40817967	7827100.15	344.00	-70	1500	225	228	3	7.76	0.16	203	16.9	2187	305

- Note: (1) All results reported are 3 metre, speared, RC drill samples.  
(2) Assay method is 40 gram fire assay with ASS determination.  
(3) Gold results are reported at a 0.1 g/t Au cut-off with no top cut applied.  
(4) Duplicates and standards were routinely inserted

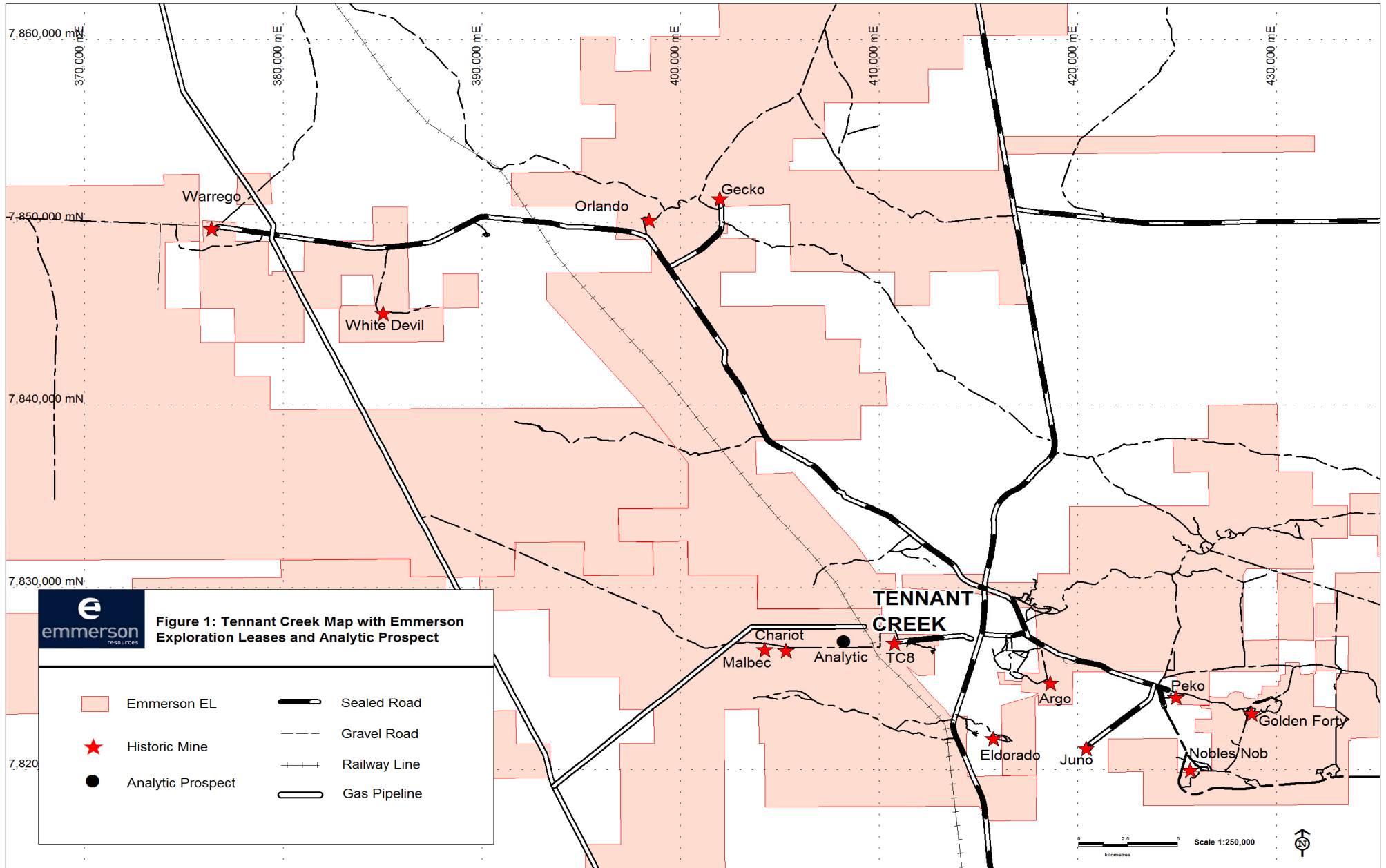


Figure 1: Tennant Creek Location Map with historic mines, Emmerson Exploration Leases and Analytic One prospect.

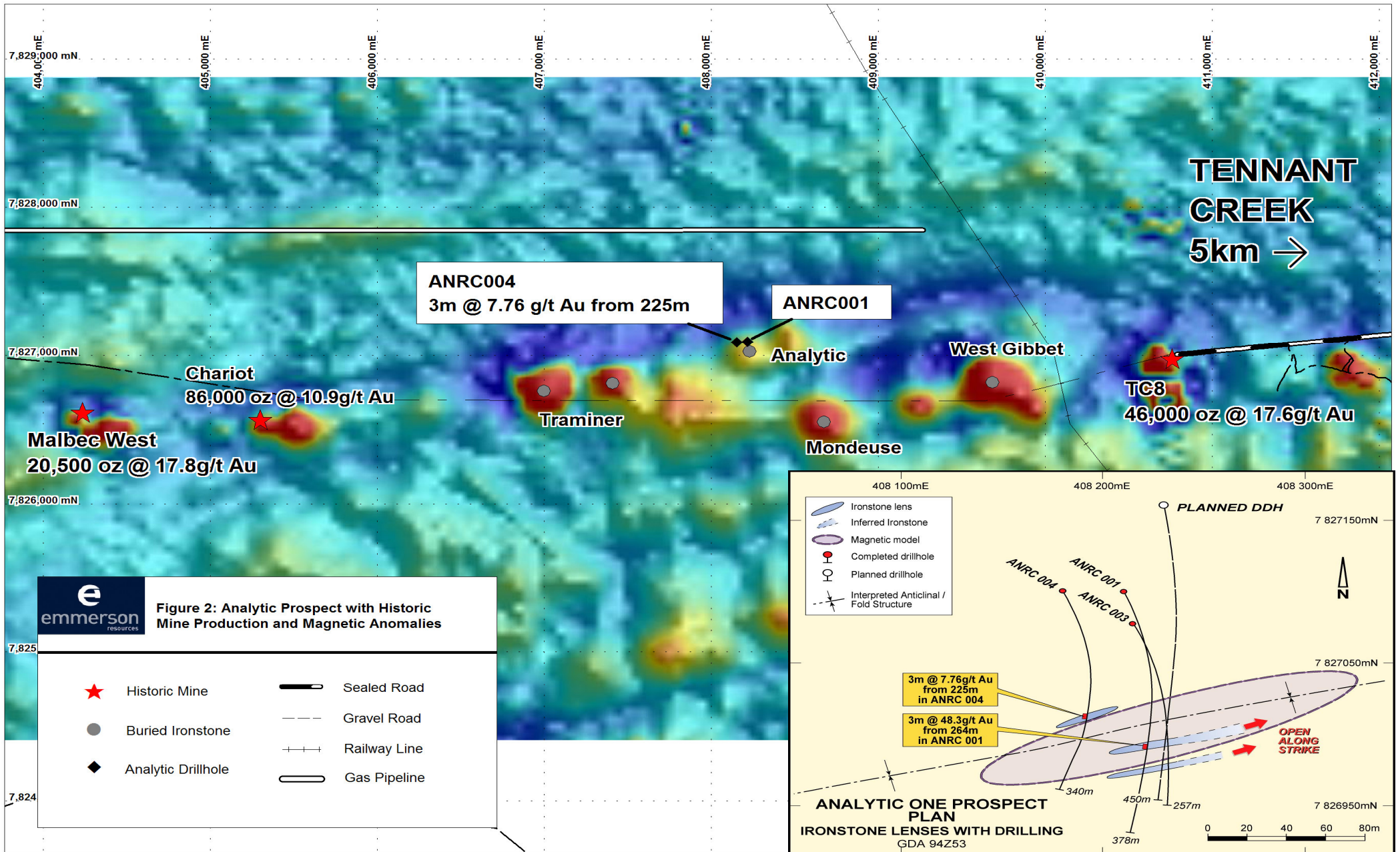


Figure 2: Analytic Prospect with Historic Mine Production and Magnetic Anomalies plus Analytic One prospect drill hole plan (insert)

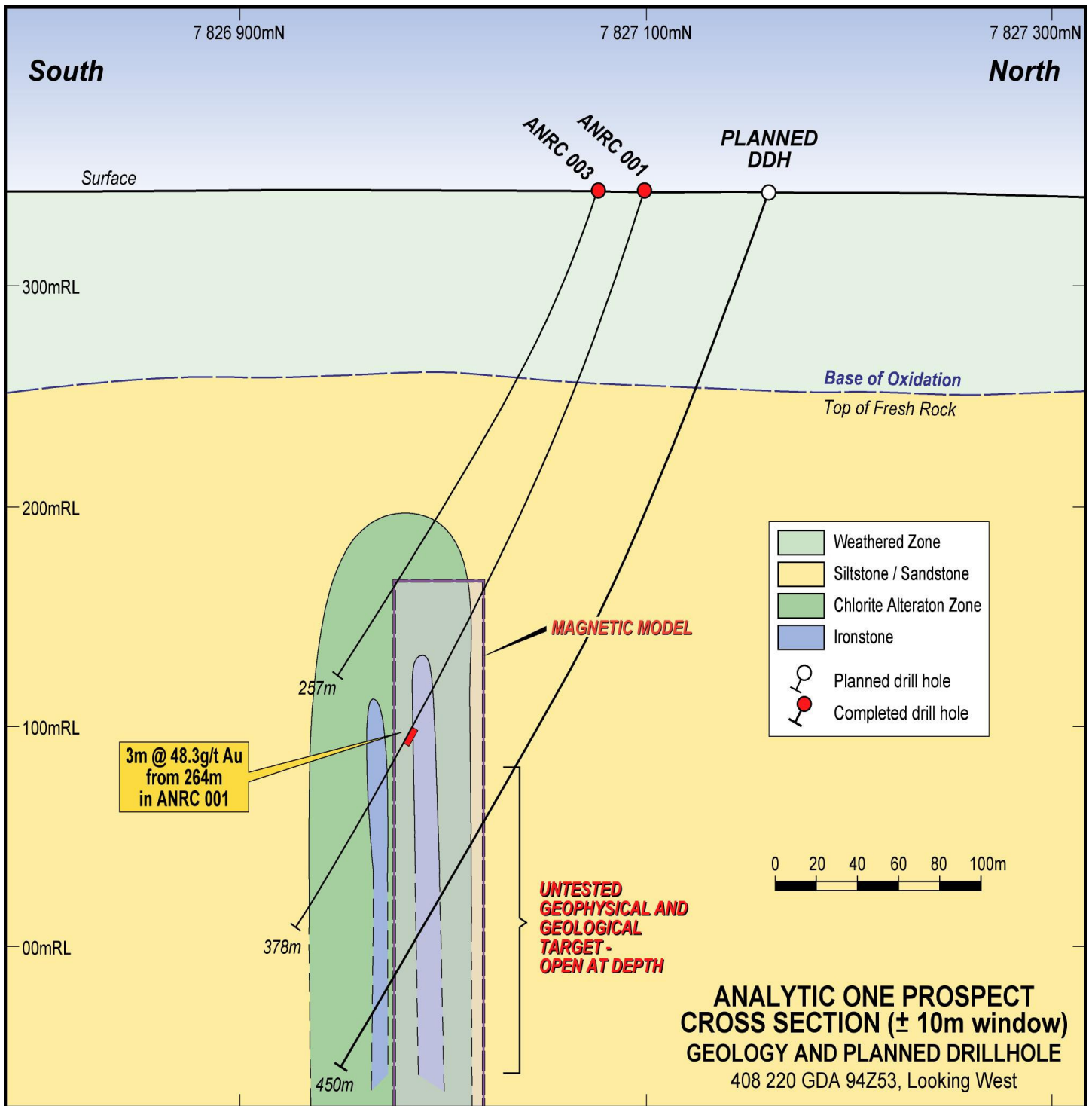


Figure 3: Cross section 408 220mE (looking west) - Analytic One prospect.